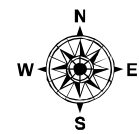




IAP Page Index Map

Rocky Incident
CA-LNU-006984
August 2, 2015
0700-0700
NAD 83

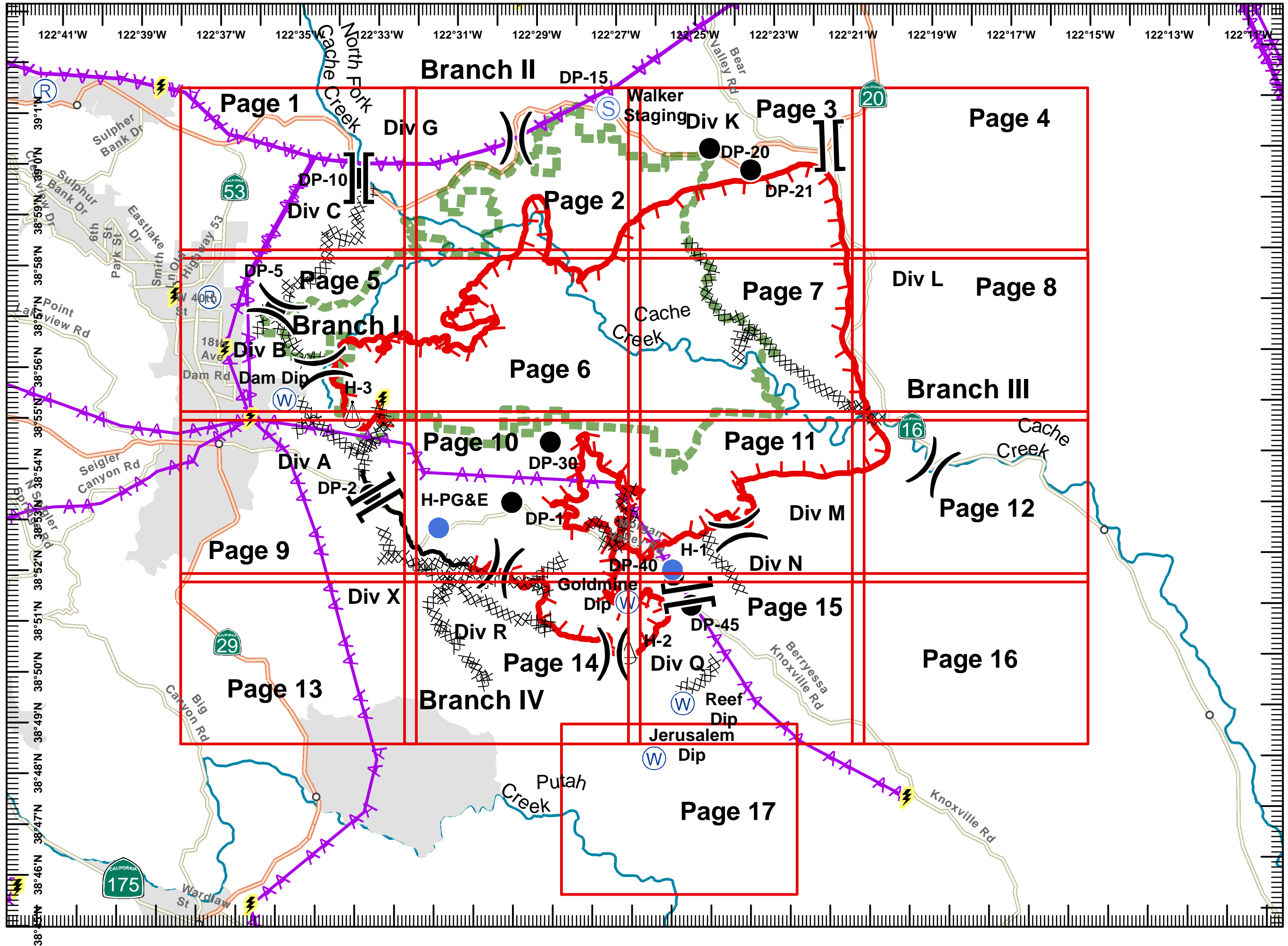
- Division
- Branch
- Drop Point
- Completed Line
- Uncontrolled Fire Edge
- Completed Dozer Line
- Transmission Lines
- Cash Creek Wilderness
- Substations
- Communication Tower
- Dip Sites
- Helispot
- Staging Area
- Sling Site



Miles
0 0.5 1 2

1:130,000

Postler
August 02, 2015
0231





IAP MAP

Rocky Incident
CA-LNU-006984

August 2, 2015

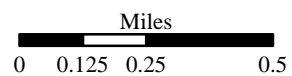
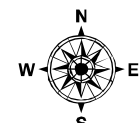
0700-0700

NAD 83

Page 1 of 17

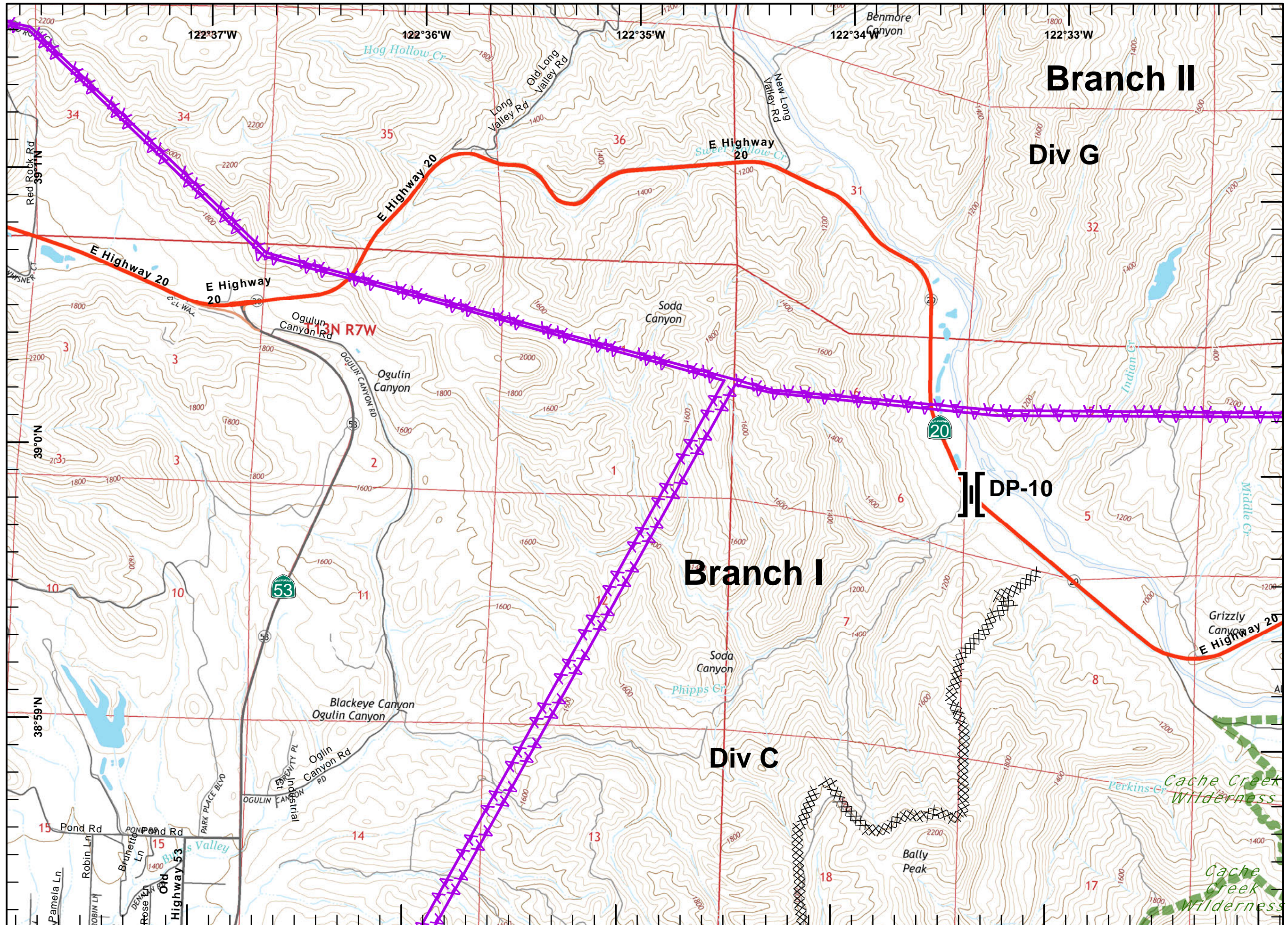
- Division
- Branch
- Drop Point
- Completed Line
- Uncontrolled Fire Edge
- Completed Dozer Line
- Transmission Lines
- Cash Creek Wilderness
- Substations
- Communication Tower
- Dip Sites
- Helispot
- Staging Area
- Sling Site

1	2	3	4
5	6	7	8
9	10	11	12
13	14	15	16
17			



1:24,000

Postler
August 02, 2015
0253

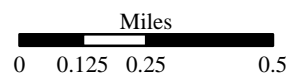
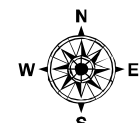




IAP MAP
 Rocky Incident
 CA-LNU-006984
 August 2, 2015
 0700-0700
 NAD 83
 Page 2 of 17

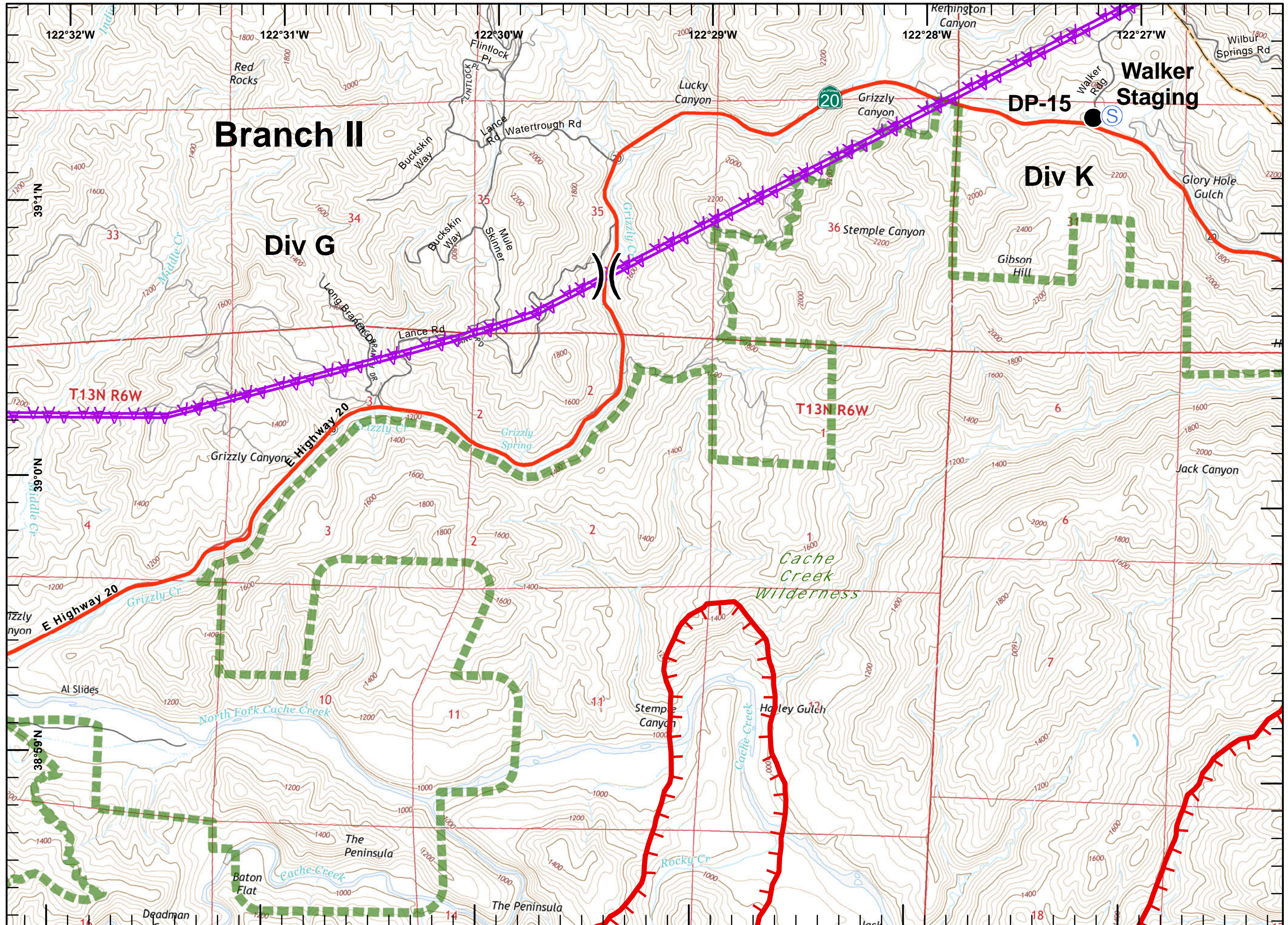
- Division
- Branch
- Drop Point
- Completed Line
- Uncontrolled Fire Edge
- Completed Dozer Line
- Transmission Lines
- Cash Creek Wilderness
- Substations
- Communication Tower
- Dip Sites
- Helispot
- Staging Area
- Sling Site

1	2	3	4
5	6	7	8
9	10	11	12
13	14	15	16
17			



1:24,000

Postler
 August 02, 2015
 0254

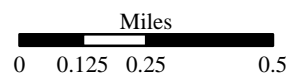
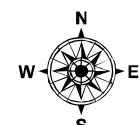




IAP MAP
 Rocky Incident
 CA-LNU-006984
 August 2, 2015
 0700-0700
 NAD 83
 Page 3 of 17

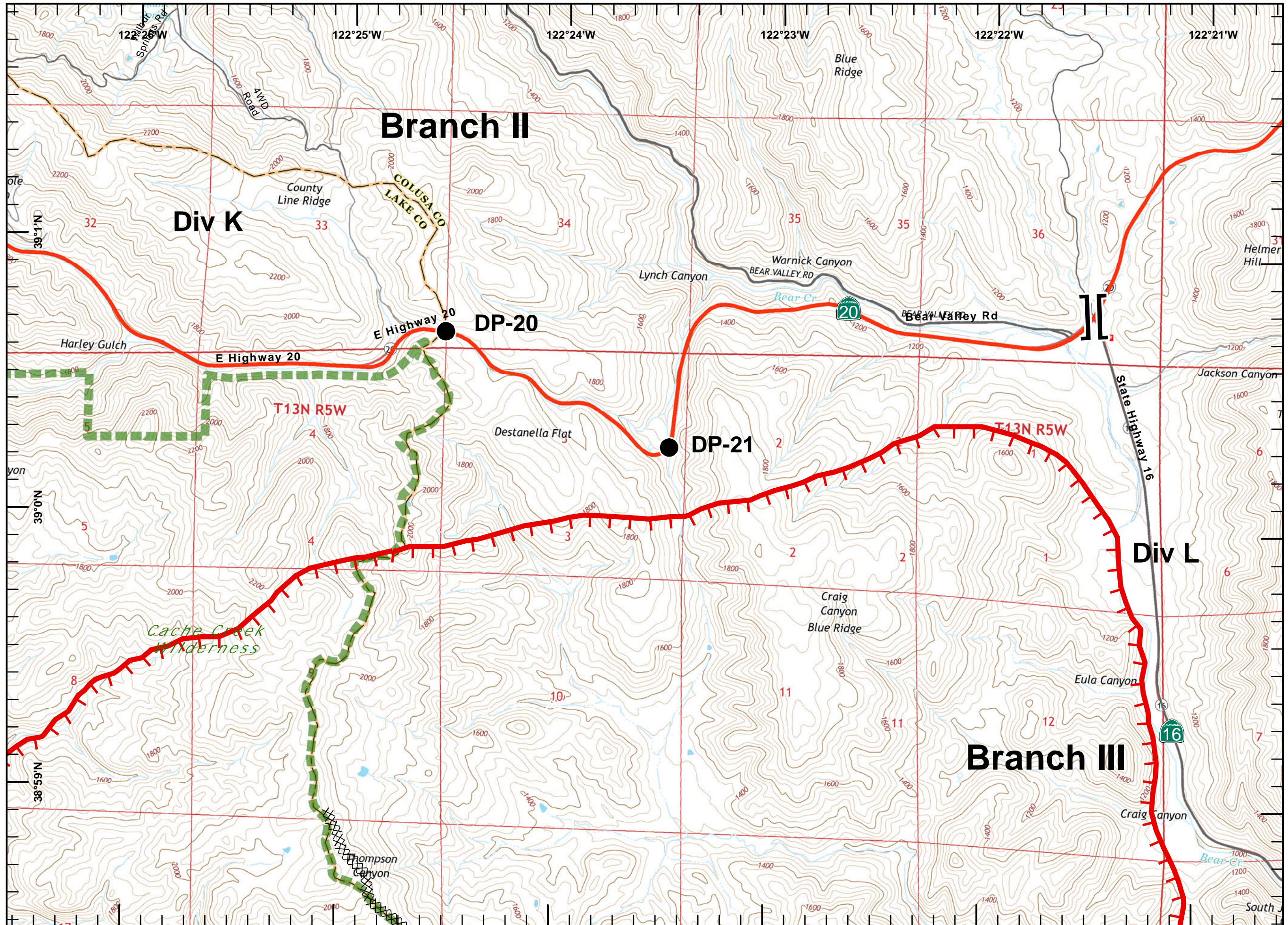
- Division
- Branch
- Drop Point
- Completed Line
- Uncontrolled Fire Edge
- Completed Dozer Line
- Transmission Lines
- Cash Creek Wilderness
- Substations
- Communication Tower
- Dip Sites
- Helispot
- Staging Area
- Sling Site

1	2	3	4
5	6	7	8
9	10	11	12
13	14	15	16
17			



1:24,000

Postler
 August 02, 2015
 0254



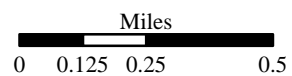
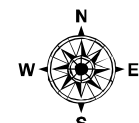


IAP MAP

Rocky Incident
CA-LNU-006984
August 2, 2015
0700-0700
NAD 83
Page 4 of 17

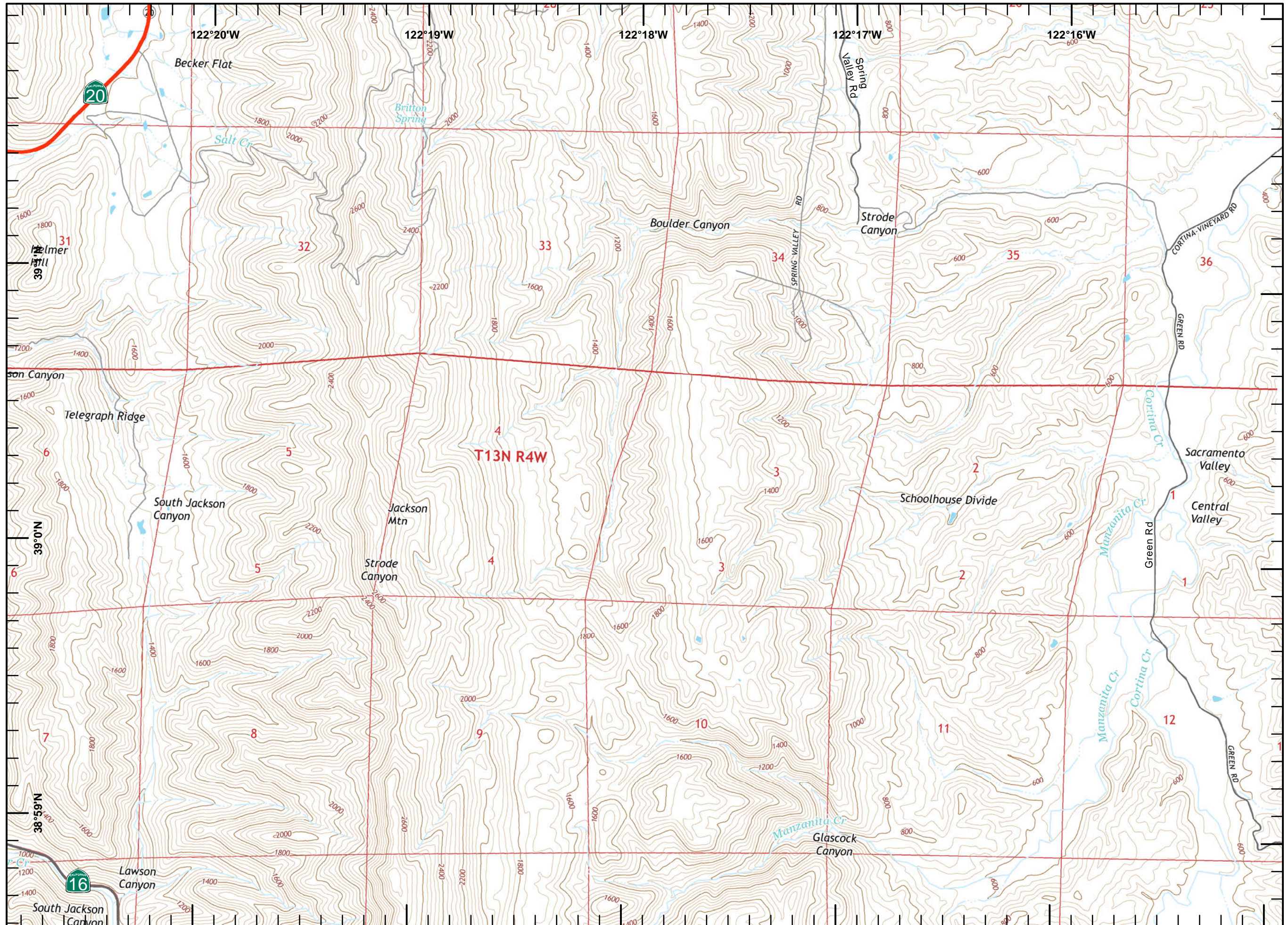
- Division
- Branch
- Drop Point
- Completed Line
- Uncontrolled Fire Edge
- Completed Dozer Line
- Transmission Lines
- Cash Creek Wilderness
- Substations
- Communication Tower
- Dip Sites
- Helispot
- Staging Area
- Sling Site

1	2	3	4
5	6	7	8
9	10	11	12
13	14	15	16
17			



1:24,000

Postler
August 02, 2015
0254





IAP MAP

Rocky Incident
CA-LNU-006984

August 2, 2015

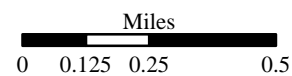
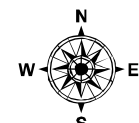
0700-0700

NAD 83

Page 5 of 17

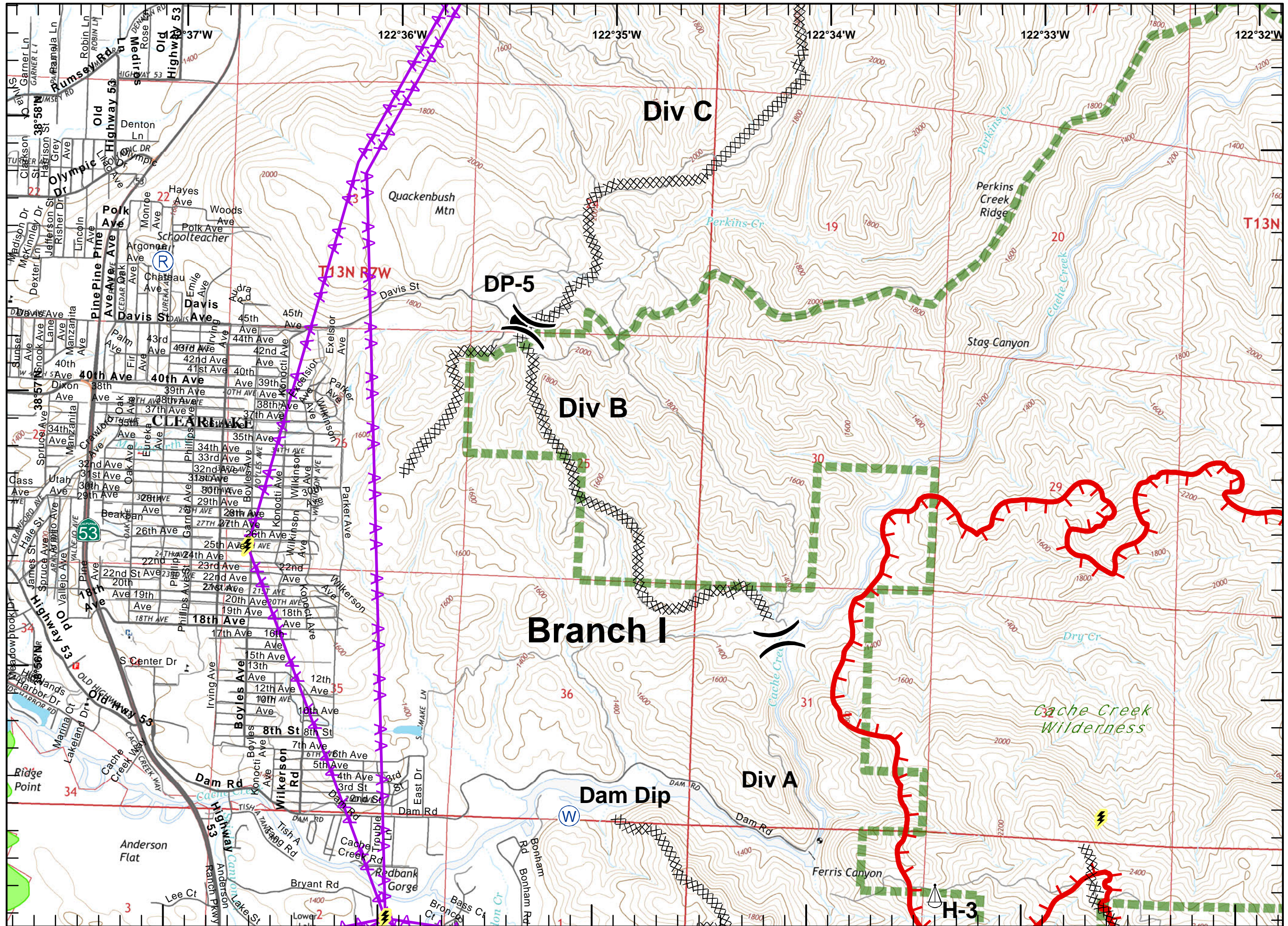
- Division
- Branch
- Drop Point
- Completed Line
- Uncontrolled Fire Edge
- Completed Dozer Line
- Transmission Lines
- Cash Creek Wilderness
- Substations
- Communication Tower
- Dip Sites
- Helispot
- Staging Area
- Sling Site

1	2	3	4
5	6	7	8
9	10	11	12
13	14	15	16
17			



1:24,000

Poster
August 02, 2015
0254

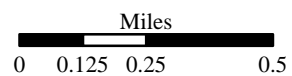
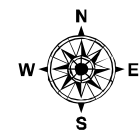




IAP MAP
 Rocky Incident
 CA-LNU-006984
 August 2, 2015
 0700-0700
 NAD 83
 Page 6 of 17

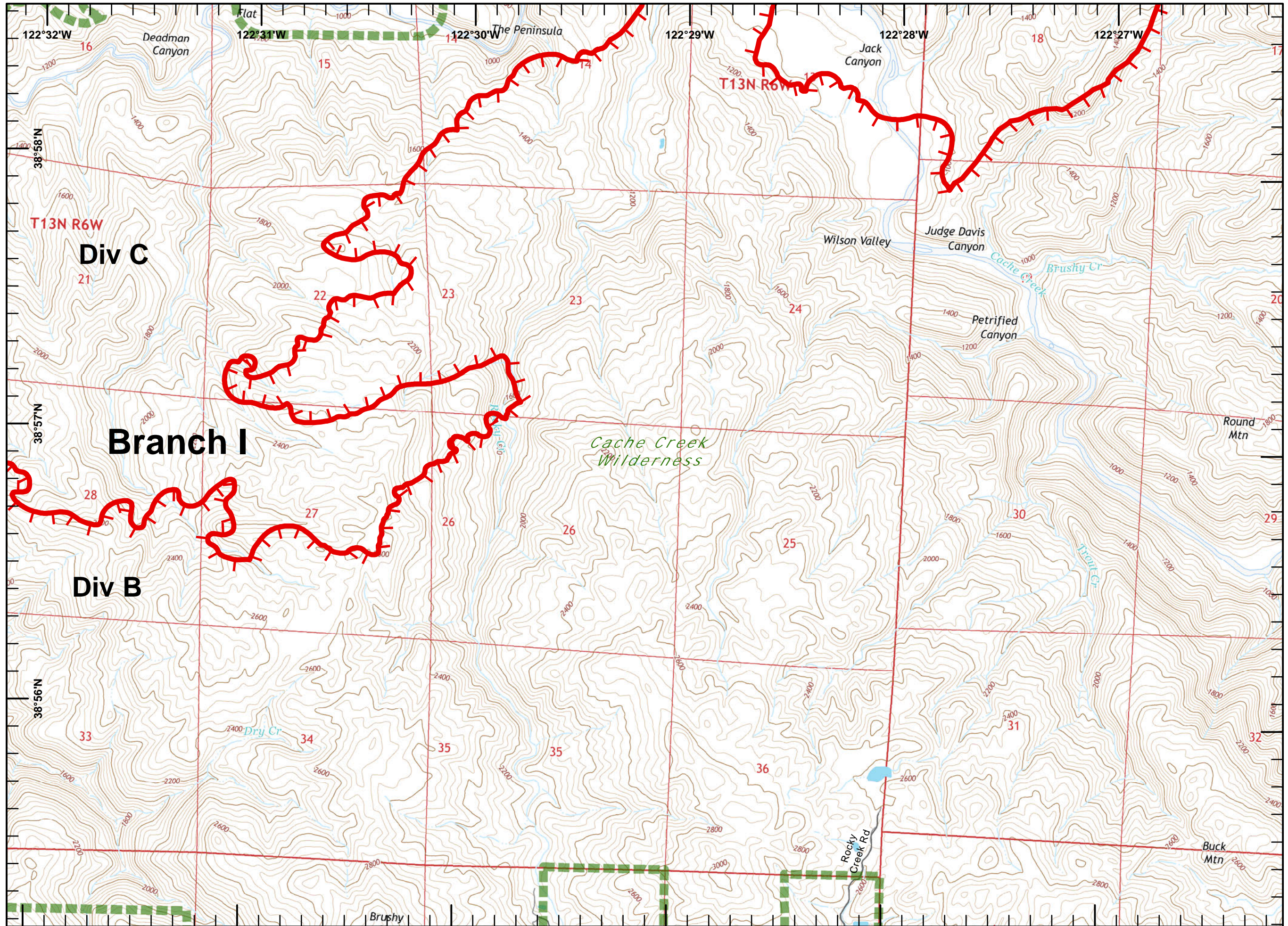
-) (Division
- [[Branch
- Drop Point
- Completed Line
- └─ Uncontrolled Fire Edge
- XXXXX Completed Dozer Line
- AA Transmission Lines
- █ Cash Creek Wilderness
- ⚡ Substations
- Ⓡ Communication Tower
- Ⓢ Dip Sites
- Ⓜ Helispot
- Ⓢ Staging Area
- Ⓢ Sling Site

1	2	3	4
5	6	7	8
9	10	11	12
13	14	15	16
17			



1:24,000

Postler
 August 02, 2015
 0254

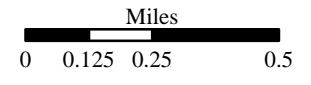
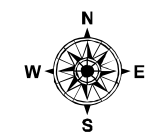




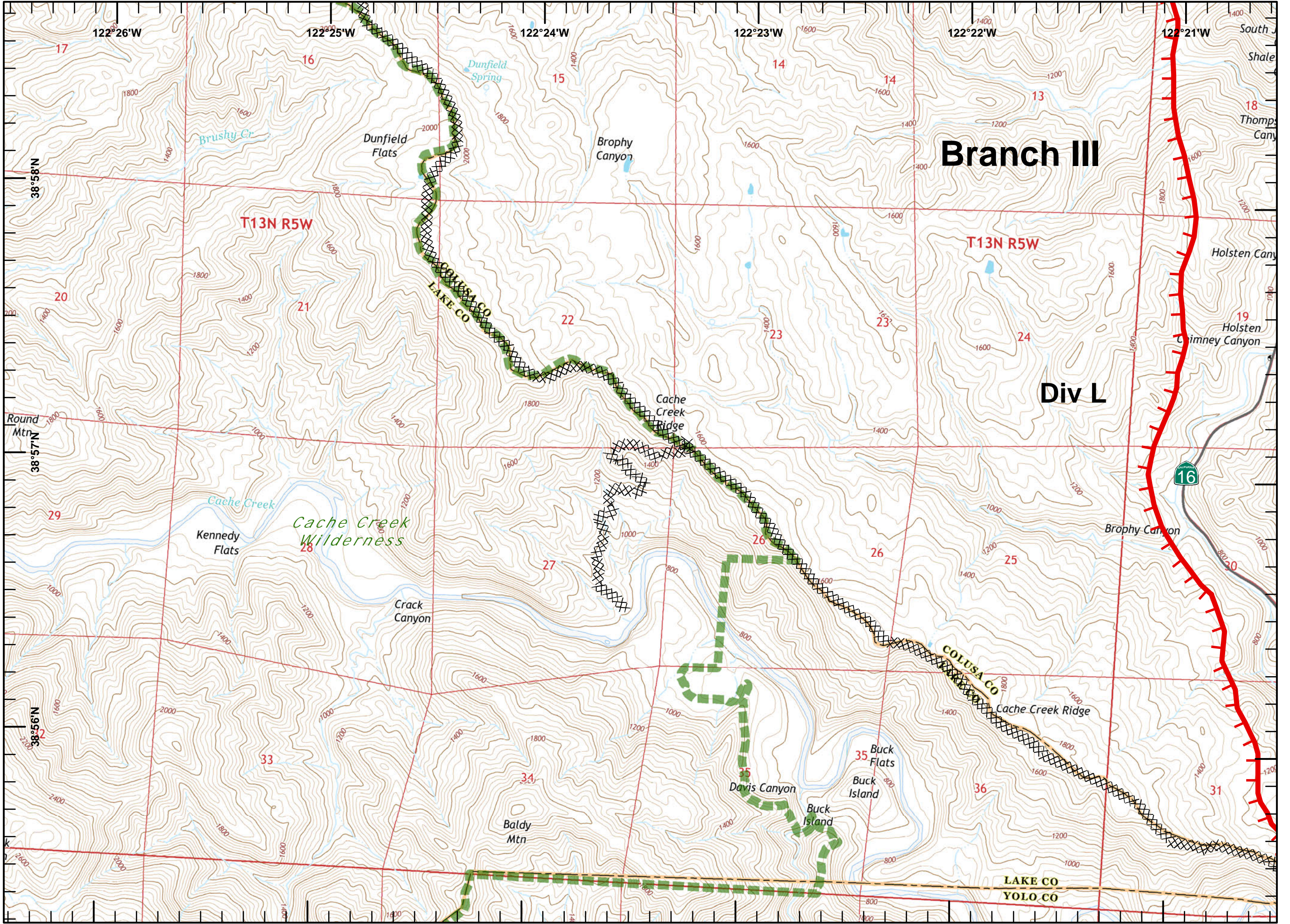
IAP MAP
 Rocky Incident
 CA-LNU-006984
 August 2, 2015
 0700-0700
 NAD 83
 Page 7 of 17

- Division
- Branch
- Drop Point
- Completed Line
- Uncontrolled Fire Edge
- Completed Dozer Line
- Transmission Lines
- Cash Creek Wilderness
- Substations
- Communication Tower
- Dip Sites
- Helispot
- Staging Area
- Sling Site

1	2	3	4
5	6	7	8
9	10	11	12
13	14	15	16
17			



1:24,000
 Postler
 August 02, 2015
 0255

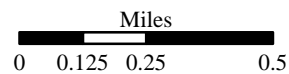
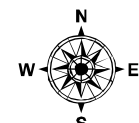




IAP MAP
 Rocky Incident
 CA-LNU-006984
 August 2, 2015
 0700-0700
 NAD 83
 Page 8 of 17

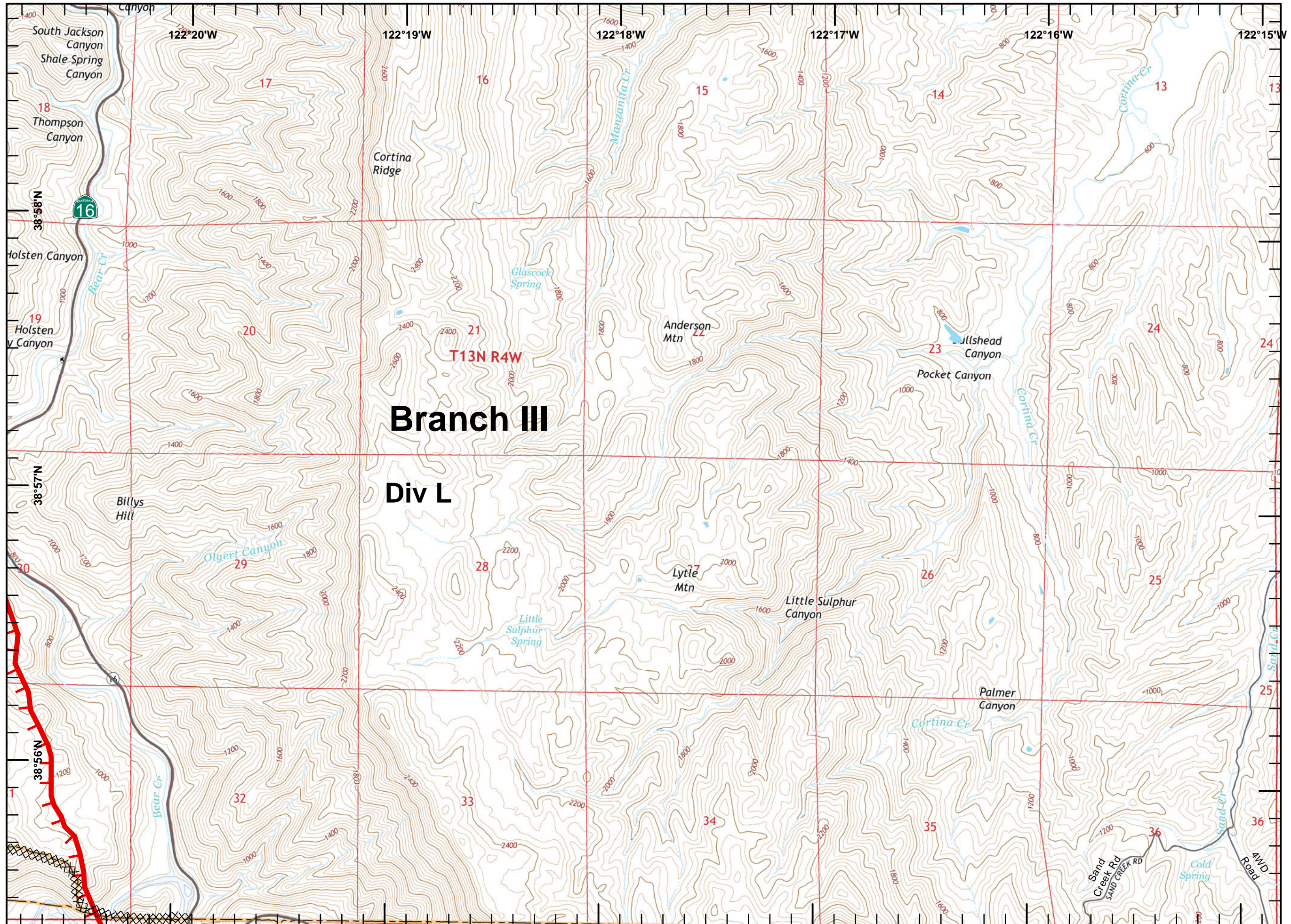
- Division
- Branch
- Drop Point
- Completed Line
- Uncontrolled Fire Edge
- Completed Dozer Line
- Transmission Lines
- Cash Creek Wilderness
- Substations
- Communication Tower
- Dip Sites
- Helispot
- Staging Area
- Sling Site

1	2	3	4
5	6	7	8
9	10	11	12
13	14	15	16
17			



1:24,000

Postler
 August 02, 2015
 0255





IAP MAP

Rocky Incident
CA-LNU-006984

August 2, 2015

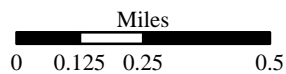
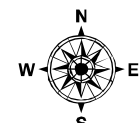
0700-0700

NAD 83

Page 9 of 17

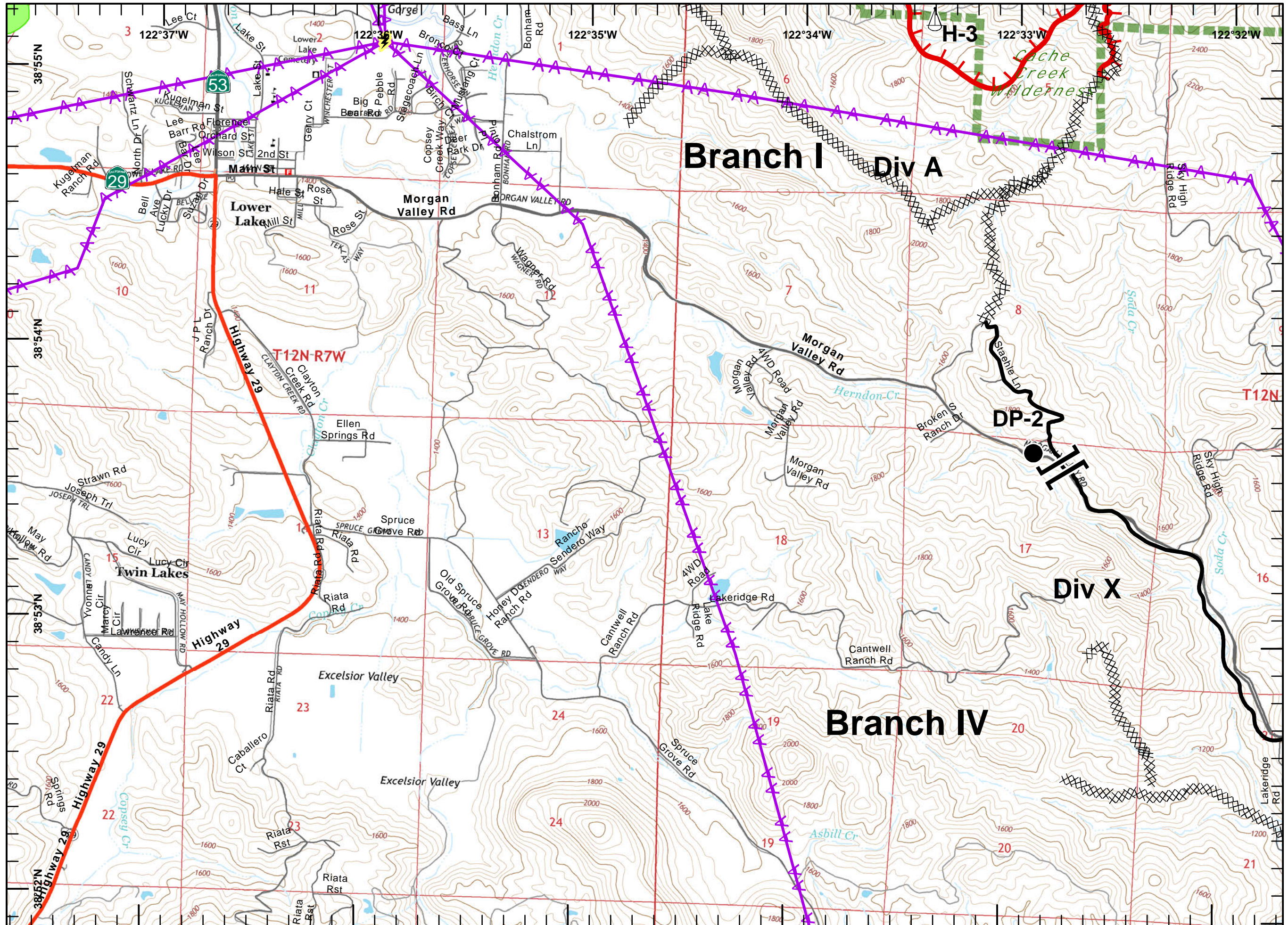
- Division
- Branch
- Drop Point
- Completed Line
- Uncontrolled Fire Edge
- Completed Dozer Line
- Transmission Lines
- Cash Creek Wilderness
- Substations
- Communication Tower
- Dip Sites
- Helispot
- Staging Area
- Sling Site

1	2	3	4
5	6	7	8
9	10	11	12
13	14	15	16
17			



1:24,000

Postler
August 02, 2015
0255





IAP MAP

Rocky Incident
CA-LNU-006984

August 2, 2015

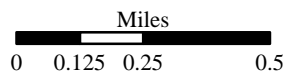
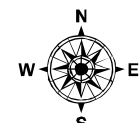
0700-0700

NAD 83

Page 10 of 17

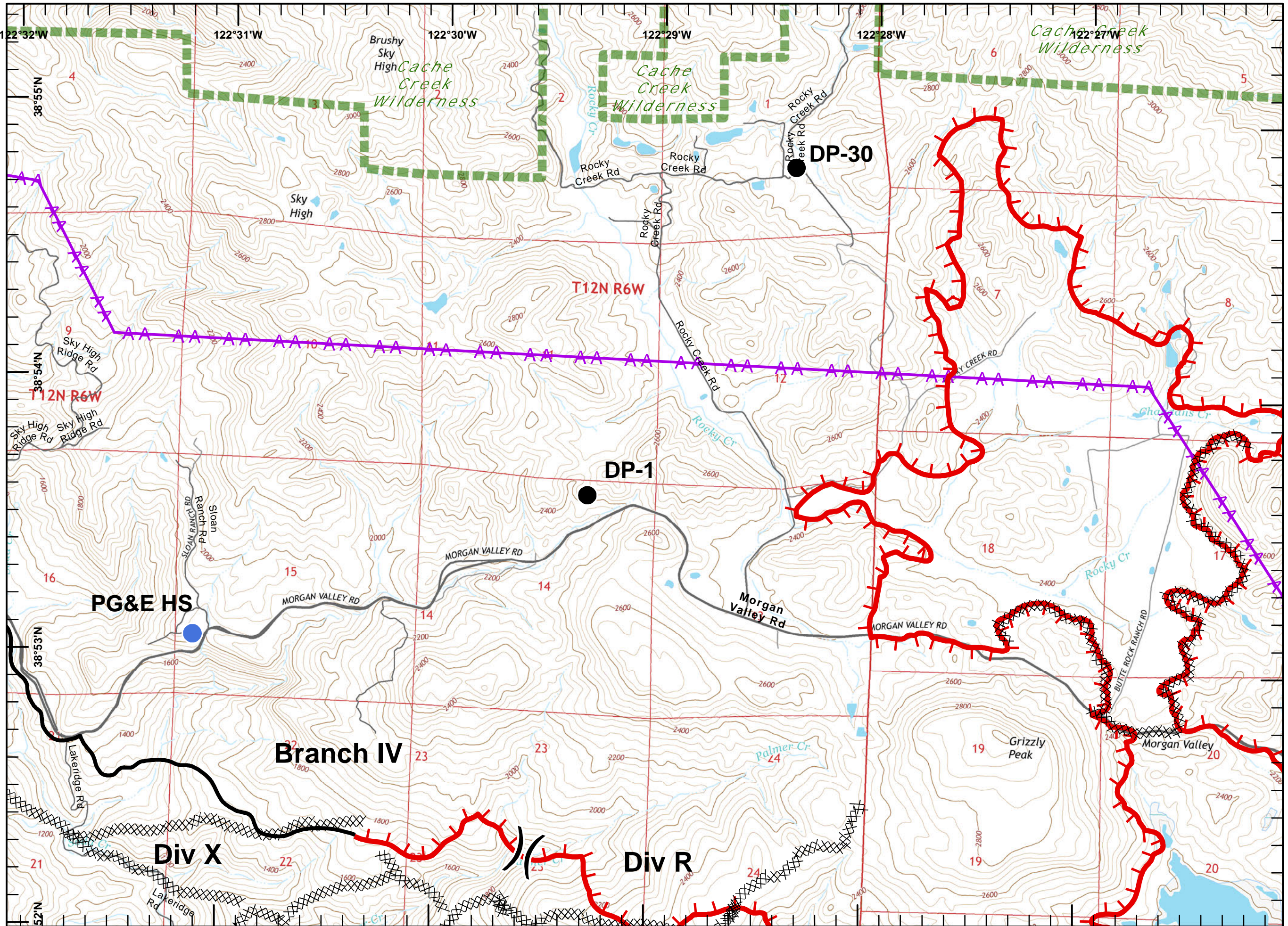
- Division
- Branch
- Drop Point
- Completed Line
- Uncontrolled Fire Edge
- Completed Dozer Line
- Transmission Lines
- Cash Creek Wilderness
- Substations
- Communication Tower
- Dip Sites
- Helispot
- Staging Area
- Sling Site

1	2	3	4
5	6	7	8
9	10	11	12
13	14	15	16
17			



1:24,000

Postler
August 02, 2015
0255





IAP MAP

Rocky Incident
CA-LNU-006984

August 2, 2015

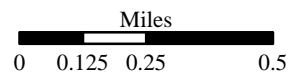
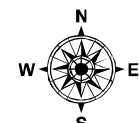
0700-0700

NAD 83

Page 11 of 17

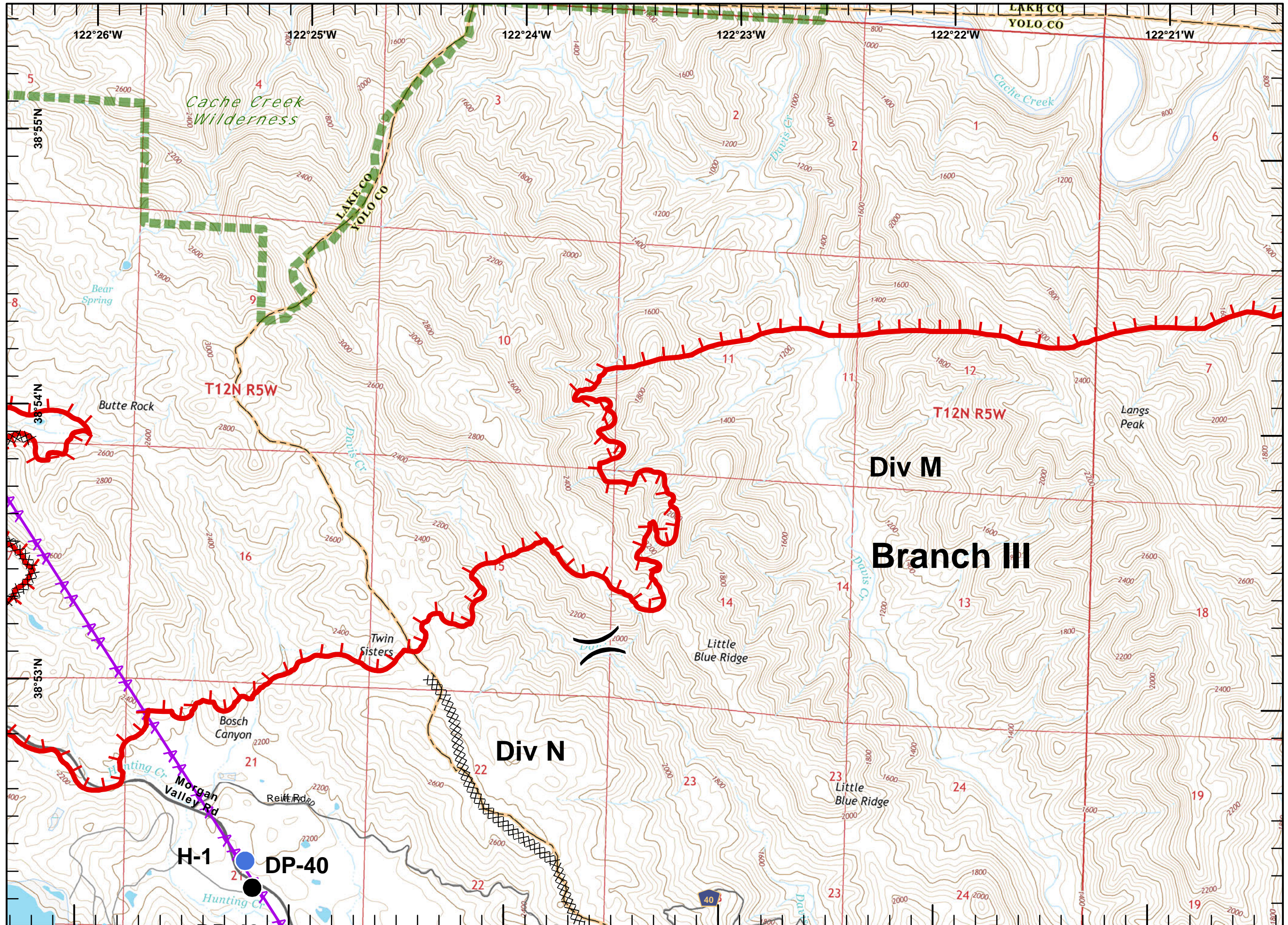
- Division
- Branch
- Drop Point
- Completed Line
- Uncontrolled Fire Edge
- Completed Dozer Line
- Transmission Lines
- Cash Creek Wilderness
- Substations
- Communication Tower
- Dip Sites
- Helispot
- Staging Area
- Sling Site

1	2	3	4
5	6	7	8
9	10	11	12
13	14	15	16
17			



1:24,000

Postler
August 02, 2015
0255





IAP MAP

Rocky Incident
CA-LNU-006984

August 2, 2015

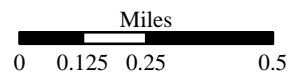
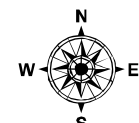
0700-0700

NAD 83

Page 12 of 17

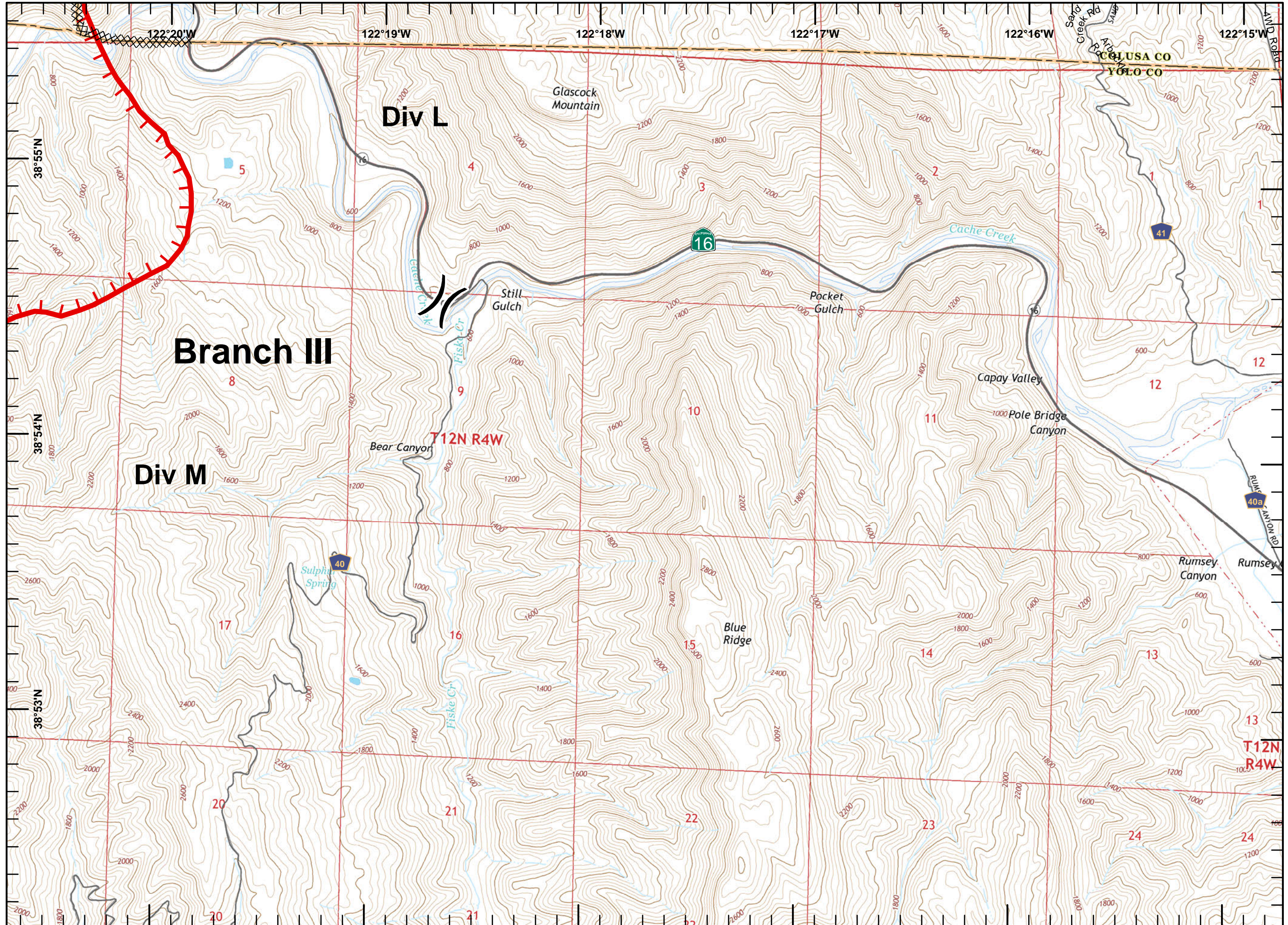
- Division
- Branch
- Drop Point
- Completed Line
- Uncontrolled Fire Edge
- Completed Dozer Line
- Transmission Lines
- Cash Creek Wilderness
- Substations
- Communication Tower
- Dip Sites
- Helispot
- Staging Area
- Sling Site

1	2	3	4
5	6	7	8
9	10	11	12
13	14	15	16
17			



1:24,000

Postler
August 02, 2015
0255

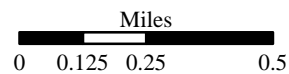
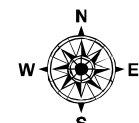




IAP MAP
 Rocky Incident
 CA-LNU-006984
 August 2, 2015
 0700-0700
 NAD 83
 Page 13 of 17

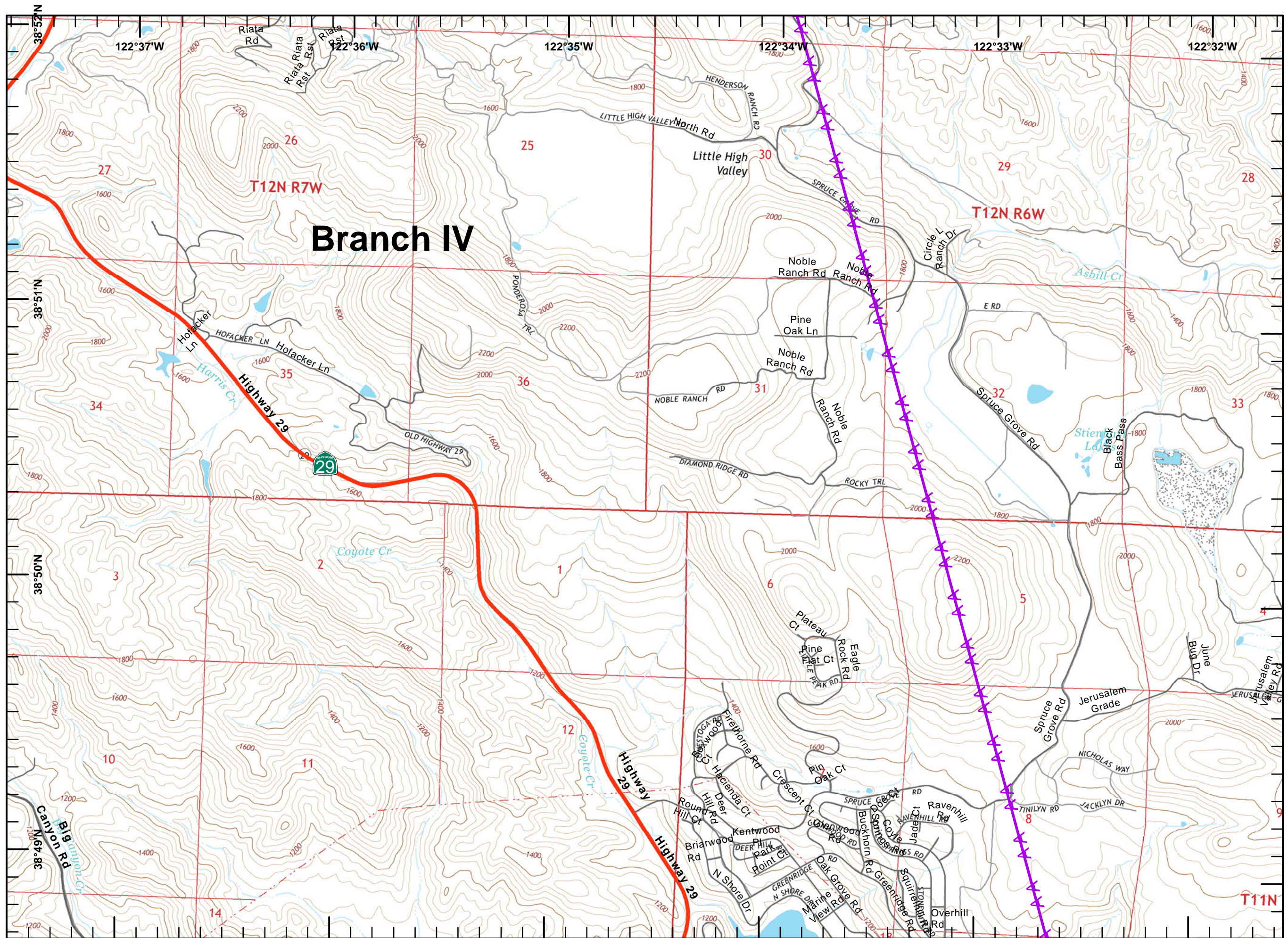
- Division
- Branch
- Drop Point
- Completed Line
- Uncontrolled Fire Edge
- Completed Dozer Line
- Transmission Lines
- Cash Creek Wilderness
- Substations
- Communication Tower
- Dip Sites
- Helispot
- Staging Area
- Sling Site

1	2	3	4
5	6	7	8
9	10	11	12
13	14	15	16
	17		



1:24,000

Postler
 August 02, 2015
 0256





IAP MAP

Rocky Incident
CA-LNU-006984

August 2, 2015

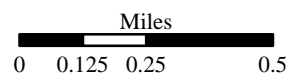
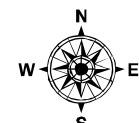
0700-0700

NAD 83

Page 14 of 17

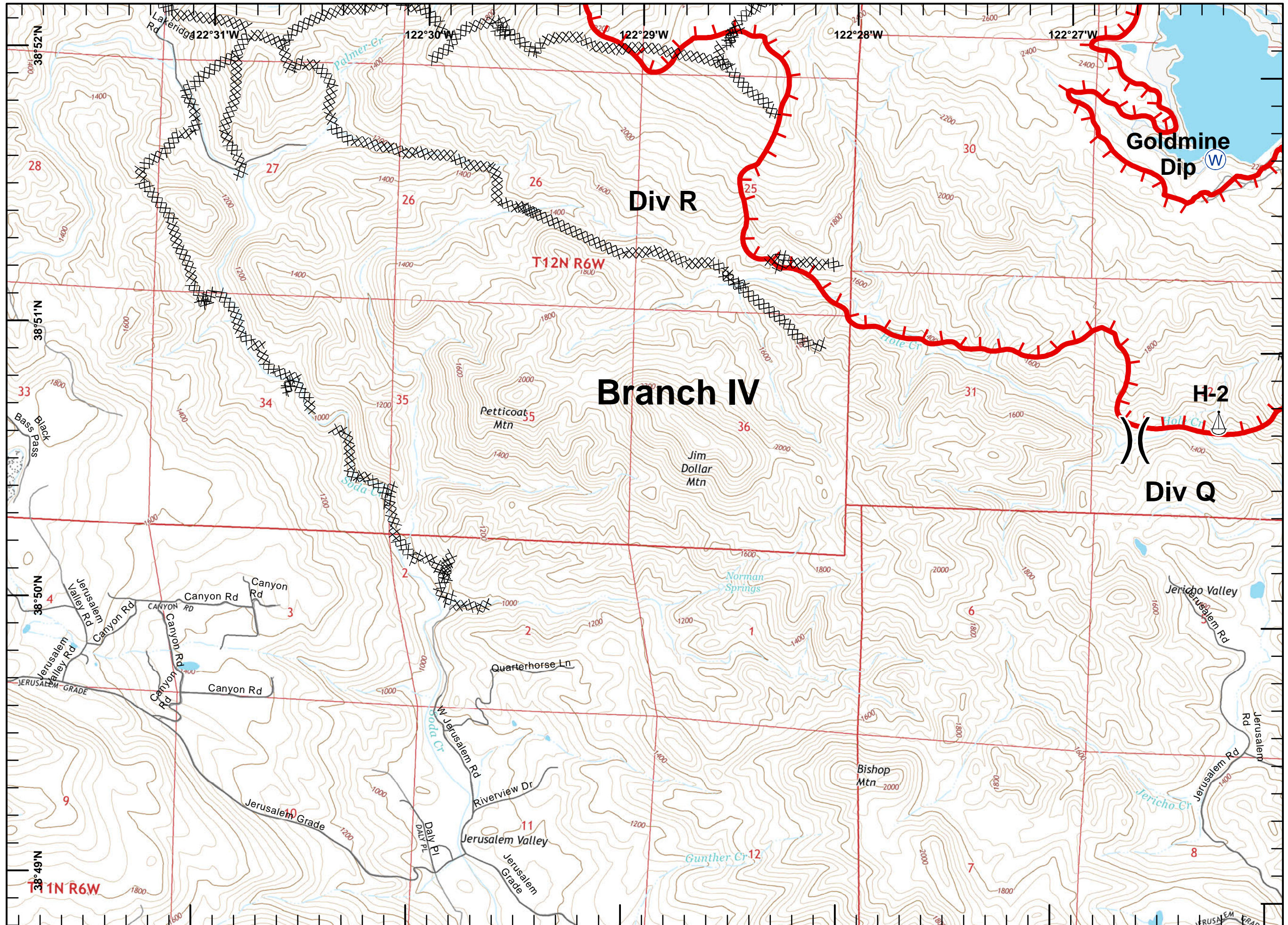
- Division
- Branch
- Drop Point
- Completed Line
- Uncontrolled Fire Edge
- Completed Dozer Line
- Transmission Lines
- Cash Creek Wilderness
- Substations
- Communication Tower
- Dip Sites
- Helispot
- Staging Area
- Sling Site

1	2	3	4
5	6	7	8
9	10	11	12
13	14	15	16
	17		



1:24,000

Postler
August 02, 2015
0256





IAP MAP

Rocky Incident
CA-LNU-006984

August 2, 2015

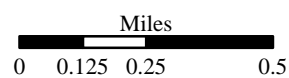
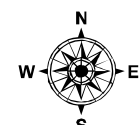
0700-0700

NAD 83

Page 15 of 17

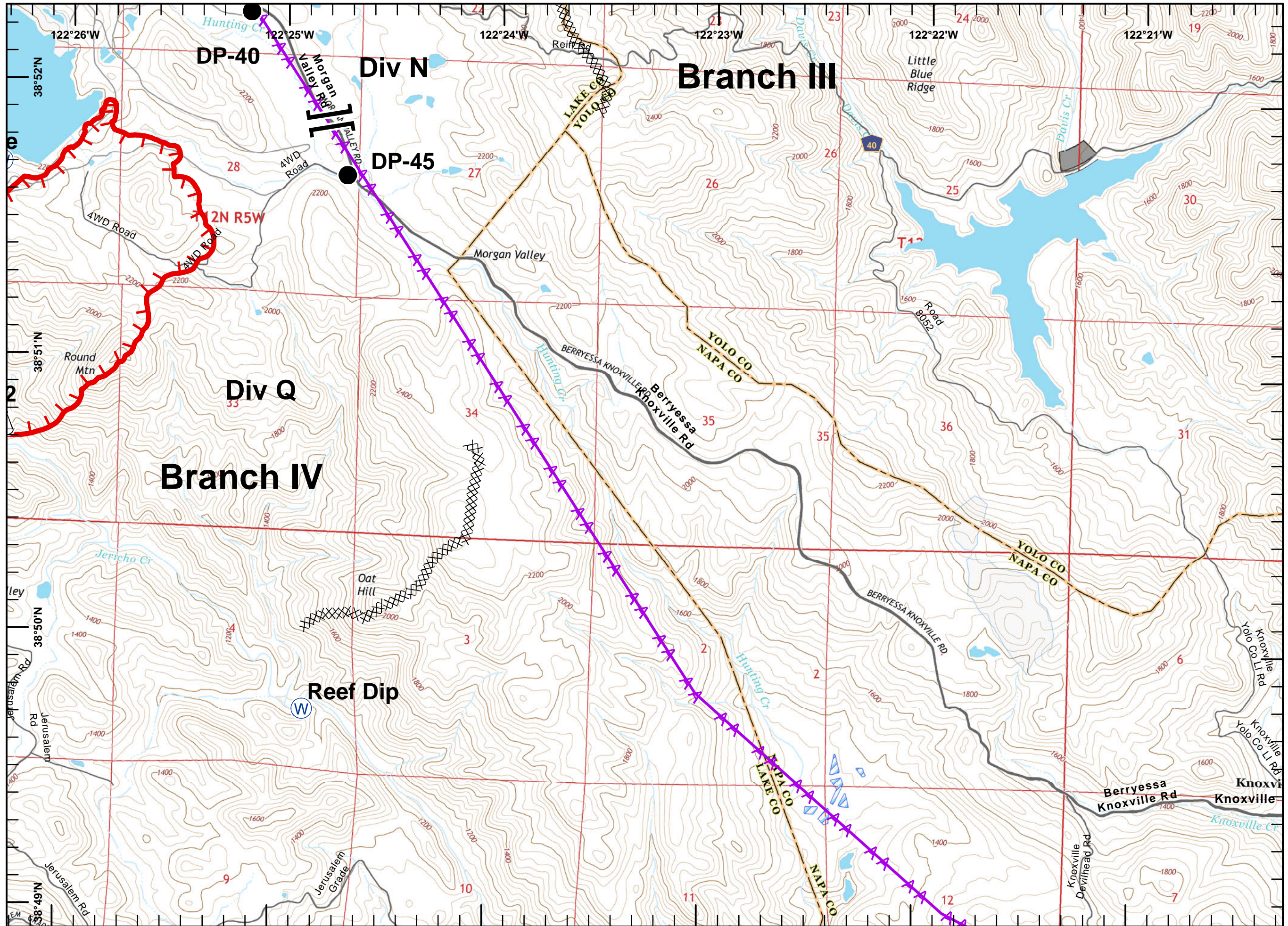
- Division
- Branch
- Drop Point
- Completed Line
- Uncontrolled Fire Edge
- Completed Dozer Line
- Transmission Lines
- Cash Creek Wilderness
- Substations
- Communication Tower
- Dip Sites
- Helispot
- Staging Area
- Sling Site

1	2	3	4
5	6	7	8
9	10	11	12
13	14	15	16
		17	



1:24,000

Postler
August 02, 2015
0256





IAP MAP

Rocky Incident
CA-LNU-006984

August 2, 2015

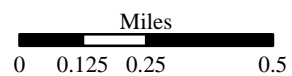
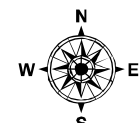
0700-0700

NAD 83

Page 16 of 17

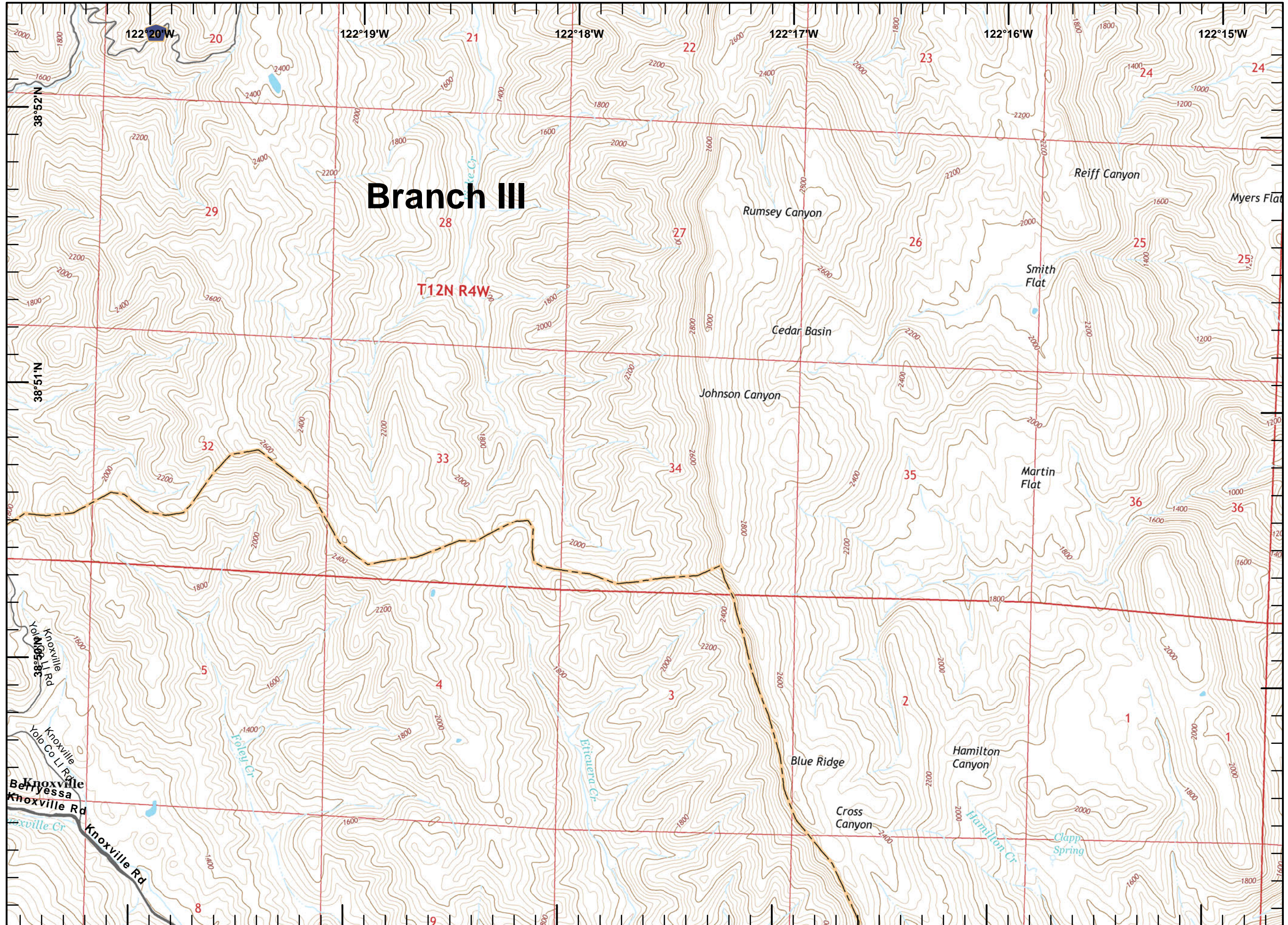
- Division
- Branch
- Drop Point
- Completed Line
- Uncontrolled Fire Edge
- Completed Dozer Line
- Transmission Lines
- Cash Creek Wilderness
- Substations
- Communication Tower
- Dip Sites
- Helispot
- Staging Area
- Sling Site

1	2	3	4
5	6	7	8
9	10	11	12
13	14	15	16
			17



1:24,000

Postler
August 02, 2015
0256





IAP MAP

Rocky Incident
CA-LNU-006984

August 2, 2015

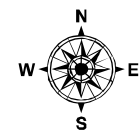
0700-0700

NAD 83

Page 17 of 17

- Division
- Branch
- Drop Point
- Completed Line
- Uncontrolled Fire Edge
- Completed Dozer Line
- Transmission Lines
- Cash Creek Wilderness
- Substations
- Communication Tower
- Dip Sites
- Helispot
- Staging Area
- Sling Site

1	2	3	4
5	6	7	8
9	10	11	12
13	14	15	16
		17	



Miles
0 0.125 0.25 0.5

1:24,000

Postler
August 02, 2015
0256

