



IAP Page Index Map

Rocky Incident
CA-LNU-006984
August 3, 2015
0700-0700
NAD 83

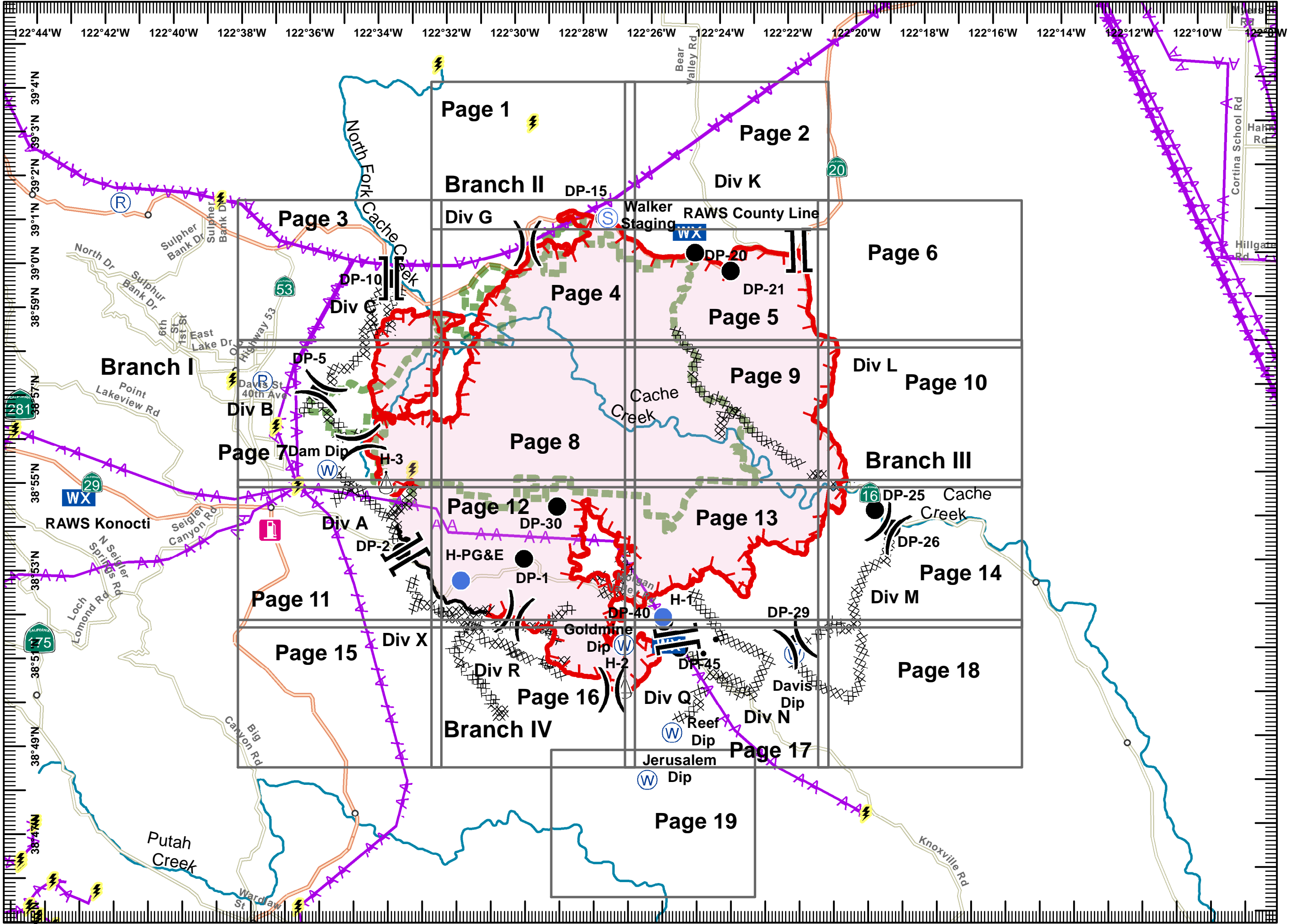
- Division
- Branch
- Drop Point
- Completed Line
- Uncontrolled Fire Edge
- Completed Dozer Line
- Proposed Dozer Line
- Transmission Lines
- Cash Creek Wilderness
- Substations
- Communication Tower
- Dip Sites
- Helispot
- Staging Area
- Sling Site
- Mobile Weather Unit
- Fuel Station



Miles
0 0.5 1 2

1:150,000

Postler
August 03, 2015
0259



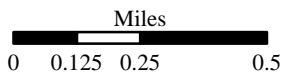
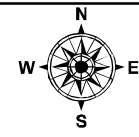


IAP MAP

Rocky Incident
CA-LNU-006984
August 3, 2015
0700-0700
NAD 83
Page 1 of 19

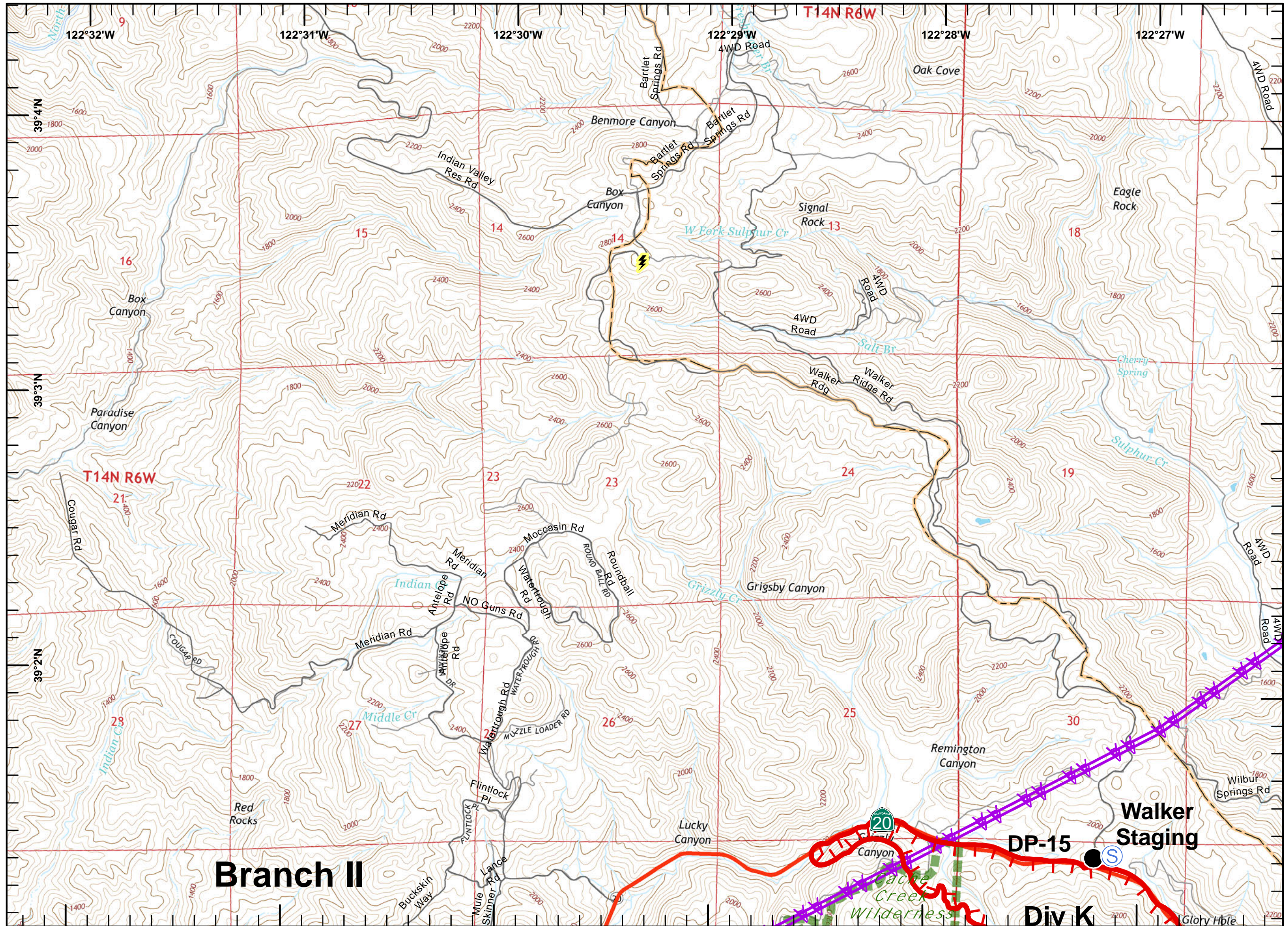
- Division
- Branch
- Drop Point
- Completed Line
- Uncontrolled Fire Edge
- Completed Dozer Line
- Proposed Dozer Line
- Transmission Lines
- Cash Creek Wilderness
- Substations
- Communication Tower
- Dip Sites
- Helispot
- Staging Area
- Sling Site
- Mobile Weather Unit
- Fuel Station

	1	2		
3	4	5	6	
7	8	9	10	
11	12	13	14	
15	16	17	18	
		19		



1:24,000

Postler
August 03, 2015
0254



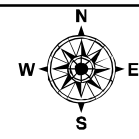


IAP MAP

Rocky Incident
CA-LNU-006984
August 3, 2015
0700-0700
NAD 83
Page 2 of 19

- Division
- Branch
- Drop Point
- Completed Line
- Uncontrolled Fire Edge
- Completed Dozer Line
- Proposed Dozer Line
- Transmission Lines
- Cash Creek Wilderness
- Substations
- Communication Tower
- Dip Sites
- Helispot
- Staging Area
- Sling Site
- Mobile Weather Unit
- Fuel Station

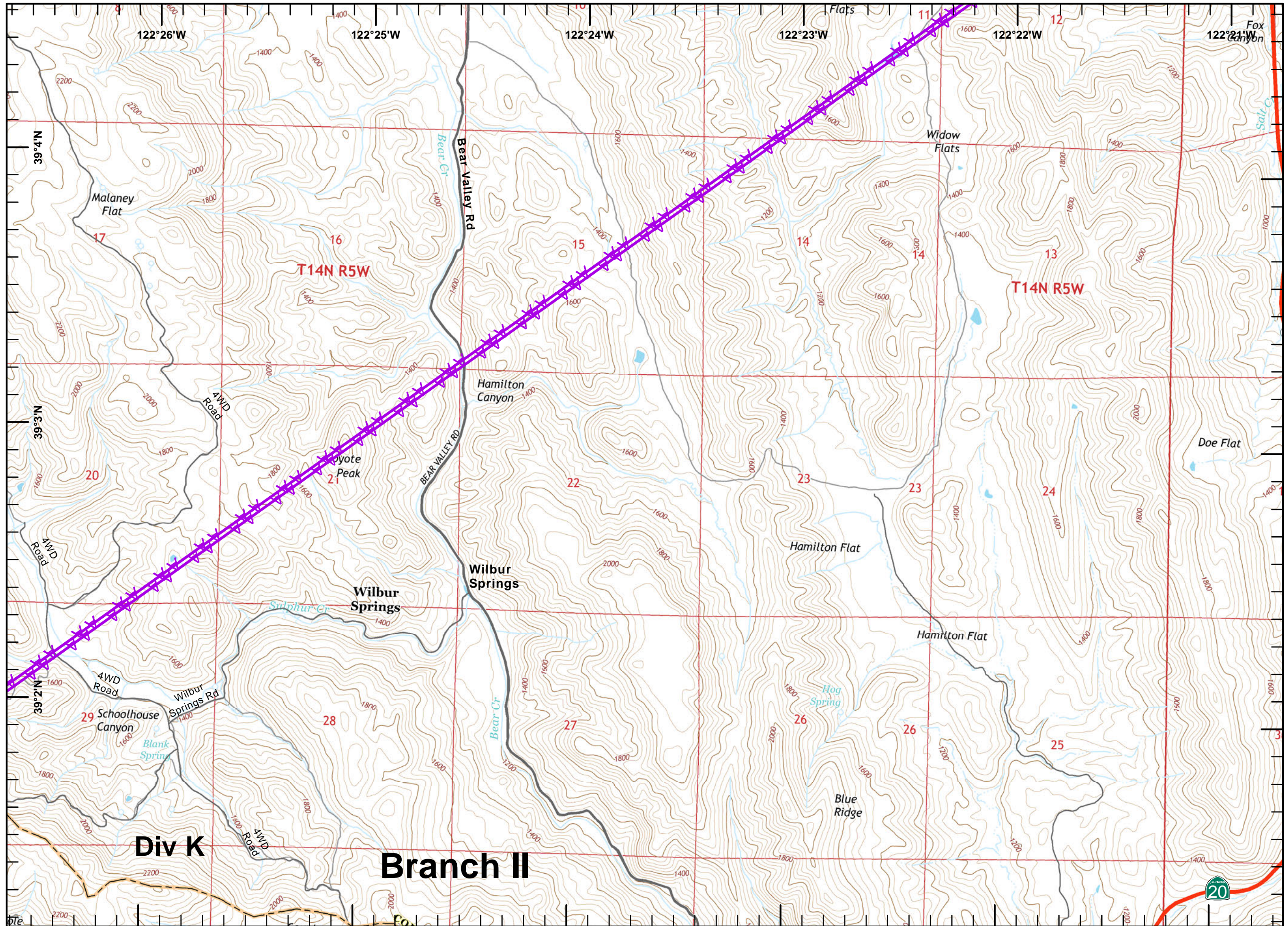
	1	2	
3	4	5	6
7	8	9	10
11	12	13	14
15	16	17	18
	19		



Miles
0 0.125 0.25 0.5

1:24,000

Postler
August 03, 2015
0254



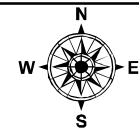


IAP MAP

Rocky Incident
CA-LNU-006984
August 3, 2015
0700-0700
NAD 83
Page 3 of 19

- Division
- Branch
- Drop Point
- Completed Line
- Uncontrolled Fire Edge
- Completed Dozer Line
- Proposed Dozer Line
- Transmission Lines
- Cash Creek Wilderness
- Substations
- Communication Tower
- Dip Sites
- Helispot
- Staging Area
- Sling Site
- Mobile Weather Unit
- Fuel Station

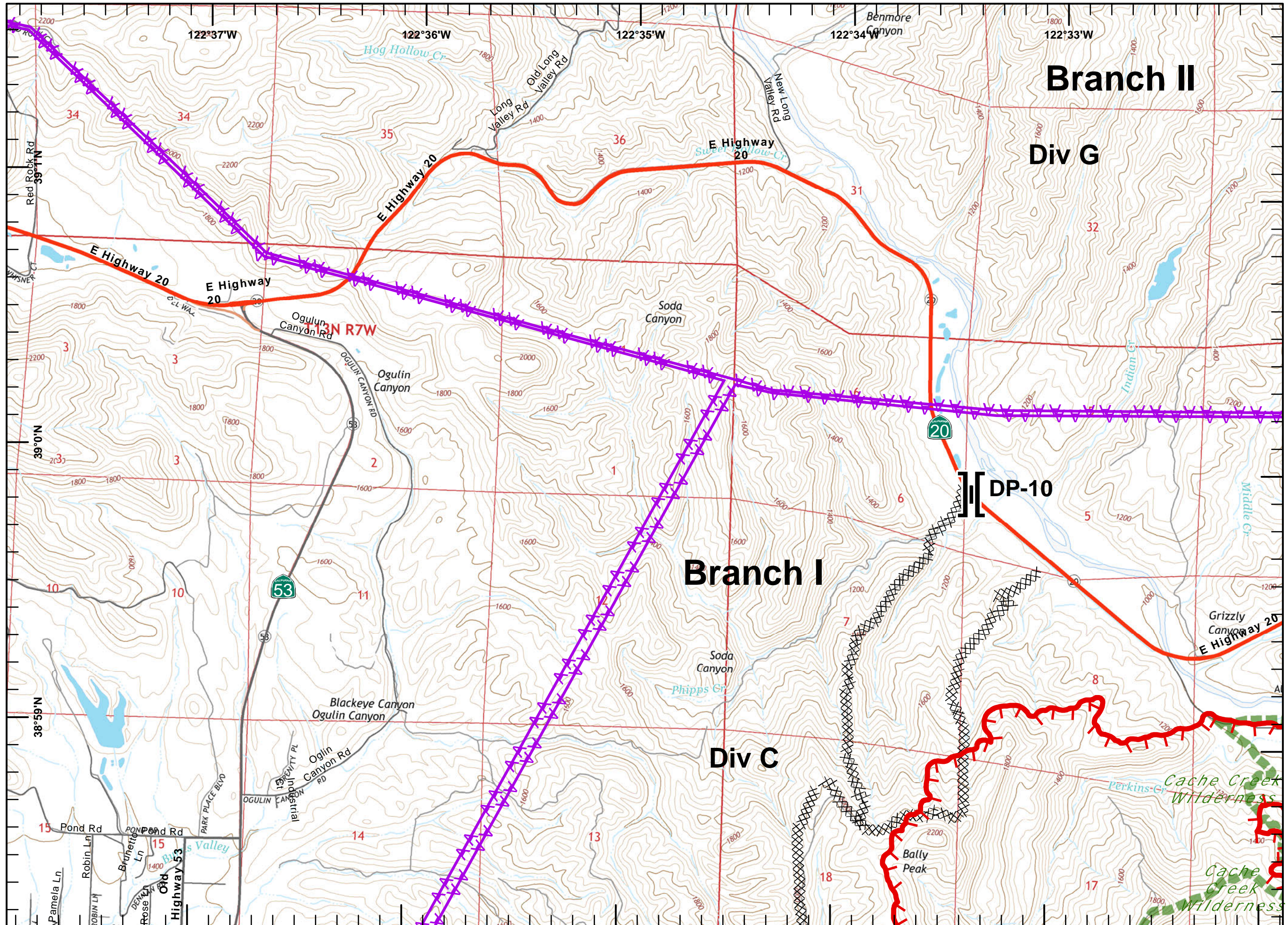
	1	2		
3	4	5	6	
7	8	9	10	
11	12	13	14	
15	16	17	18	
		19		



Miles
0 0.125 0.25 0.5

1:24,000

Postler
August 03, 2015
0254



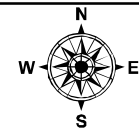


IAP MAP

Rocky Incident
 CA-LNU-006984
 August 3, 2015
 0700-0700
 NAD 83
 Page 4 of 19

- Division
- Branch
- Drop Point
- Completed Line
- Uncontrolled Fire Edge
- Completed Dozer Line
- Proposed Dozer Line
- Transmission Lines
- Cash Creek Wilderness
- Substations
- Communication Tower
- Dip Sites
- Helispot
- Staging Area
- Sling Site
- Mobile Weather Unit
- Fuel Station

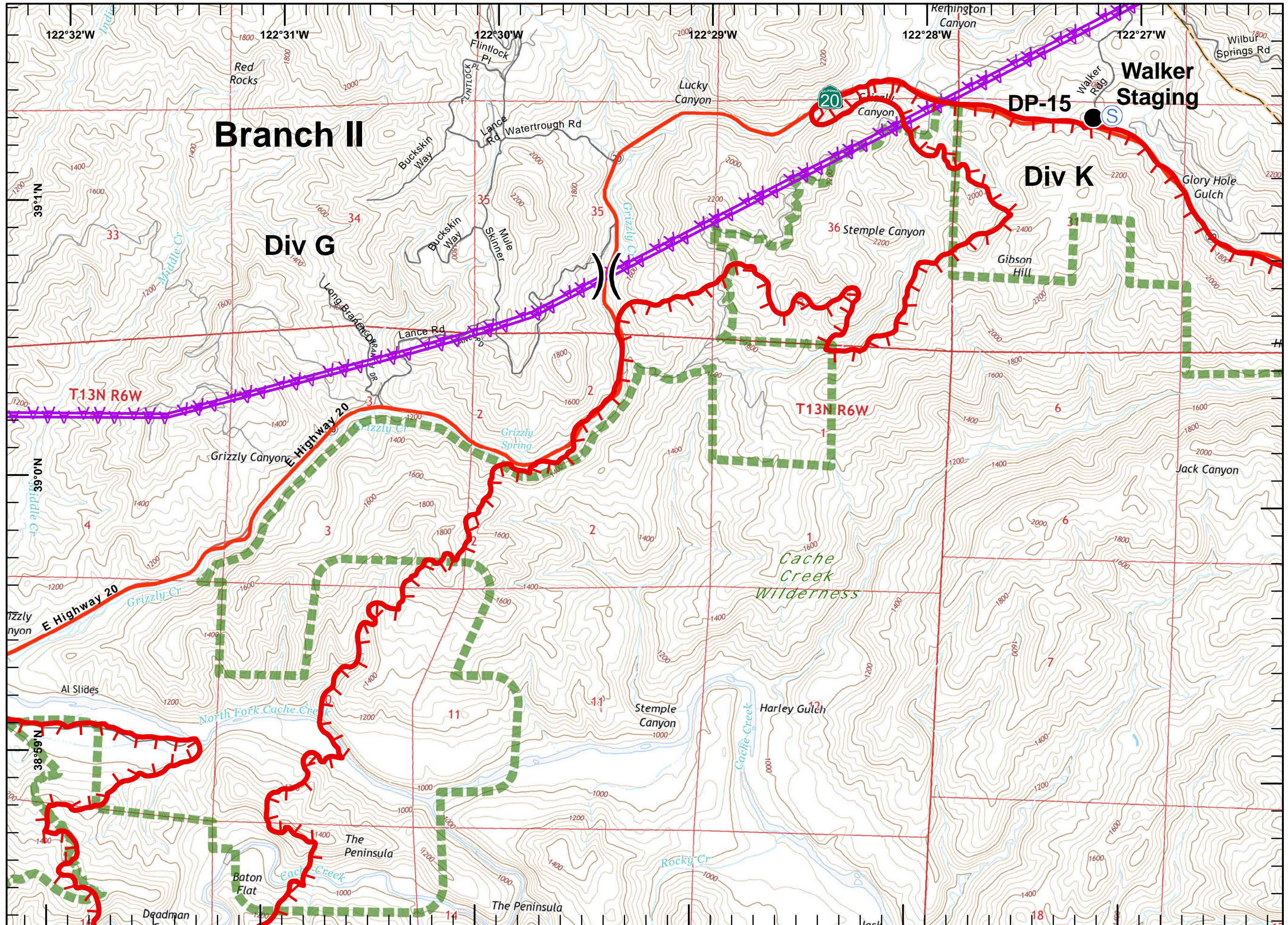
1	2
3	4
5	6
7	8
9	10
11	12
13	14
15	16
17	18
19	



Miles
 0 0.125 0.25 0.5

1:24,000

Postler
 August 03, 2015
 0255





IAP MAP
 Rocky Incident
 CA-LNU-006984
 August 3, 2015
 0700-0700
 NAD 83
 Page 5 of 19

- Division
- Branch
- Drop Point
- Completed Line
- Uncontrolled Fire Edge
- Completed Dozer Line
- Proposed Dozer Line
- Transmission Lines
- Cash Creek Wilderness
- Substations
- Communication Tower
- Dip Sites
- Helispot
- Staging Area
- Sling Site
- Mobile Weather Unit
- Fuel Station

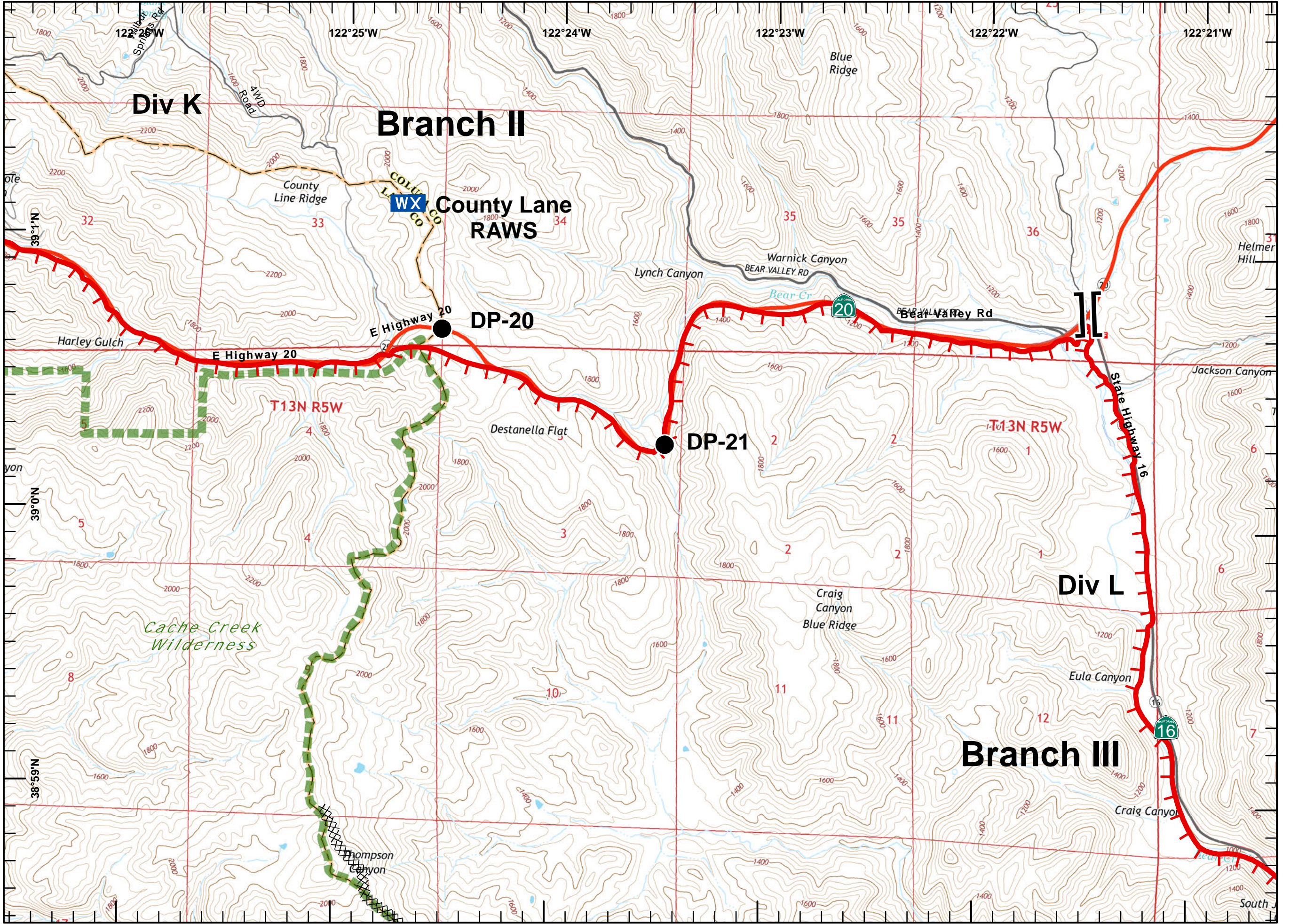
	1	2		
3	4	5	6	
7	8	9	10	
11	12	13	14	
15	16	17	18	
	19			

North arrow and scale bar.

Miles: 0, 0.125, 0.25, 0.5

1:24,000

Postler August 03, 2015 0255



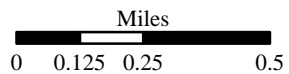
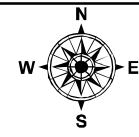


IAP MAP

Rocky Incident
CA-LNU-006984
August 3, 2015
0700-0700
NAD 83
Page 6 of 19

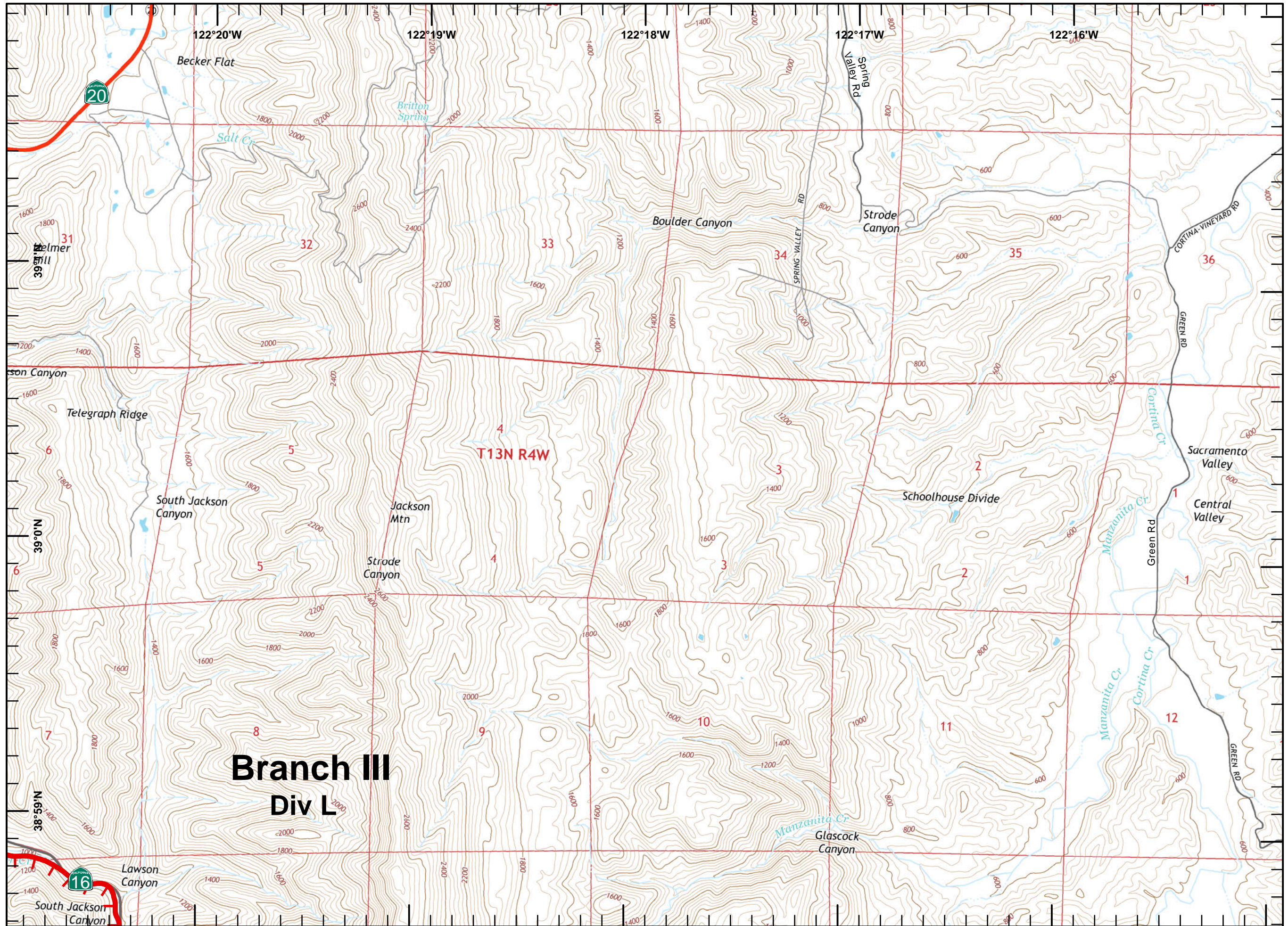
- Division
- Branch
- Drop Point
- Completed Line
- Uncontrolled Fire Edge
- Completed Dozer Line
- Proposed Dozer Line
- Transmission Lines
- Cash Creek Wilderness
- Substations
- Communication Tower
- Dip Sites
- Helispot
- Staging Area
- Sling Site
- Mobile Weather Unit
- Fuel Station

	1	2	
3	4	5	6
7	8	9	10
11	12	13	14
15	16	17	18
	19		



1:24,000

Postler
August 03, 2015
0255





IAP MAP

Rocky Incident
CA-LNU-006984

August 3, 2015

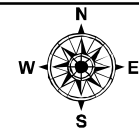
0700-0700

NAD 83

Page 7 of 19

- Division
- Branch
- Drop Point
- Completed Line
- Uncontrolled Fire Edge
- Completed Dozer Line
- Proposed Dozer Line
- Transmission Lines
- Cash Creek Wilderness
- Substations
- Communication Tower
- Dip Sites
- Helispot
- Staging Area
- Sling Site
- Mobile Weather Unit
- Fuel Station

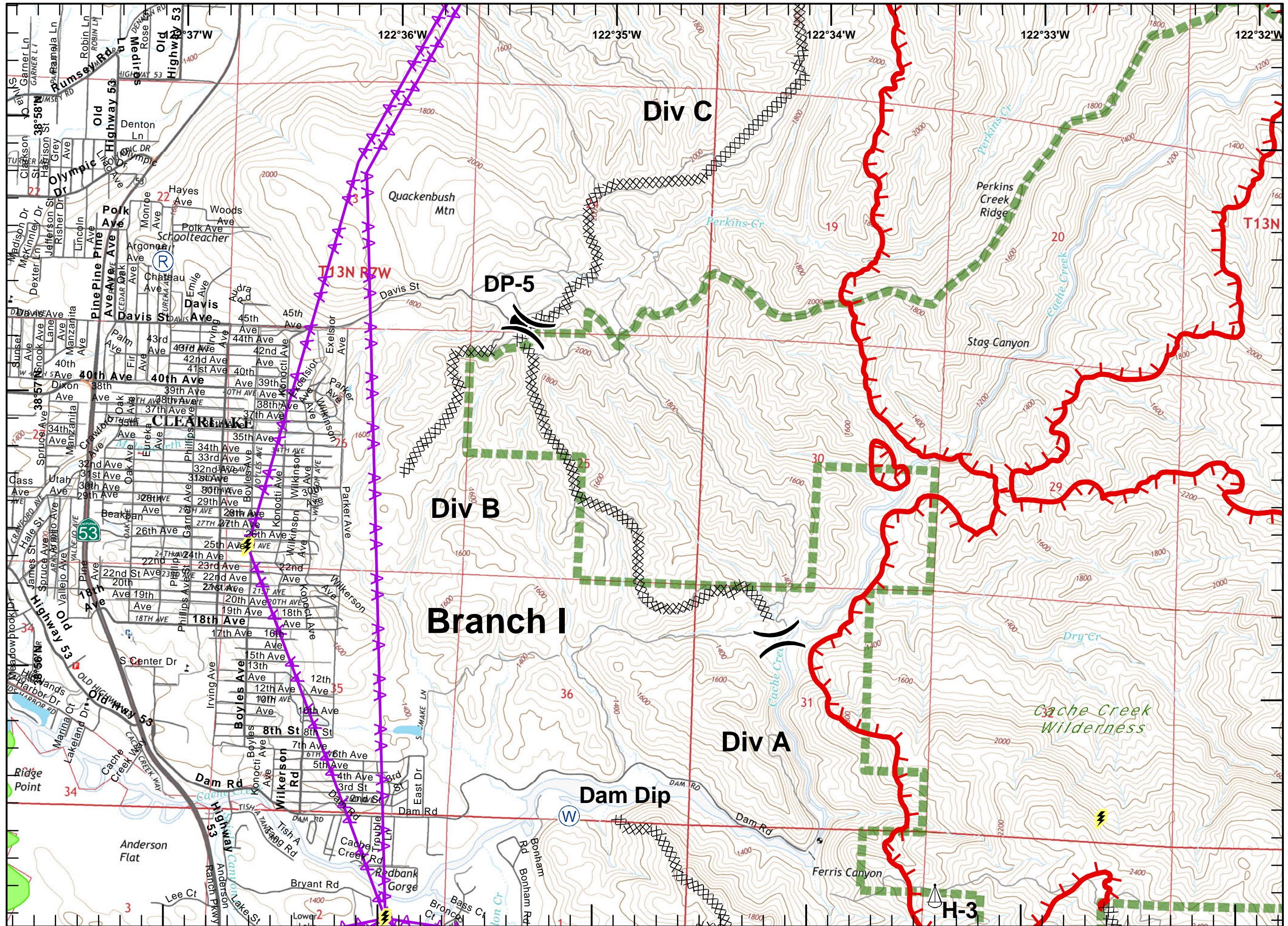
3	1	2	6
7	8	9	10
11	12	13	14
15	16	17	18
	19		



Miles
0 0.125 0.25 0.5

1:24,000

Poster
August 03, 2015
0255

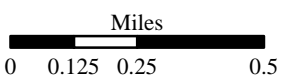
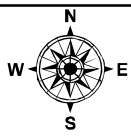




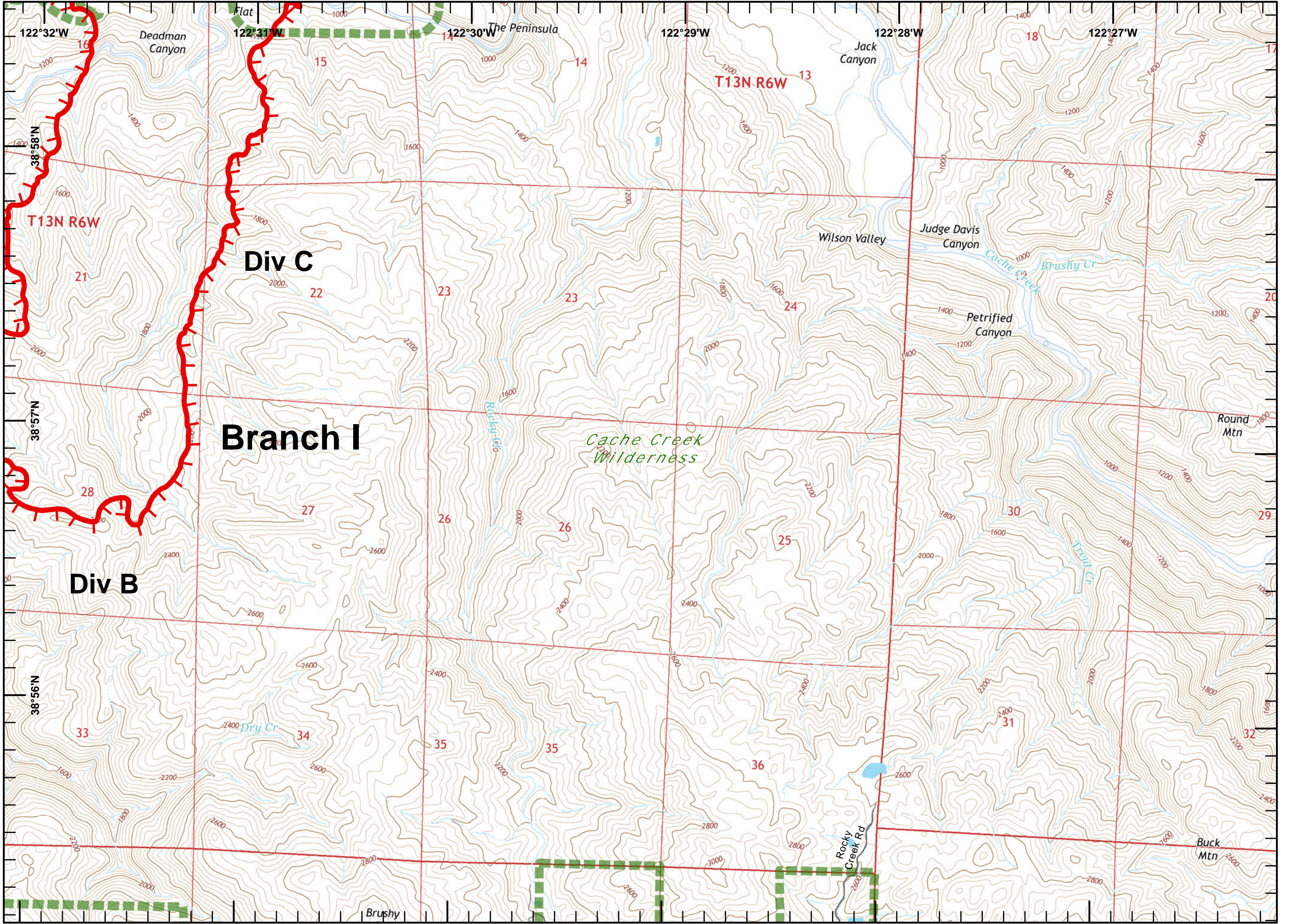
IAP MAP
 Rocky Incident
 CA-LNU-006984
 August 3, 2015
 0700-0700
 NAD 83
 Page 8 of 19

- Division
- Branch
- Drop Point
- Completed Line
- Uncontrolled Fire Edge
- Completed Dozer Line
- Proposed Dozer Line
- Transmission Lines
- Cash Creek Wilderness
- Substations
- Communication Tower
- Dip Sites
- Helispot
- Staging Area
- Sling Site
- Mobile Weather Unit
- Fuel Station

	1	2	
3	4	5	6
7	8	9	10
11	12	13	14
15	16	17	18
	19		



1:24,000
 Postler
 August 03, 2015
 0255



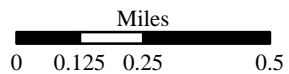
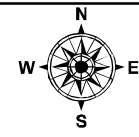


IAP MAP

Rocky Incident
 CA-LNU-006984
 August 3, 2015
 0700-0700
 NAD 83
 Page 9 of 19

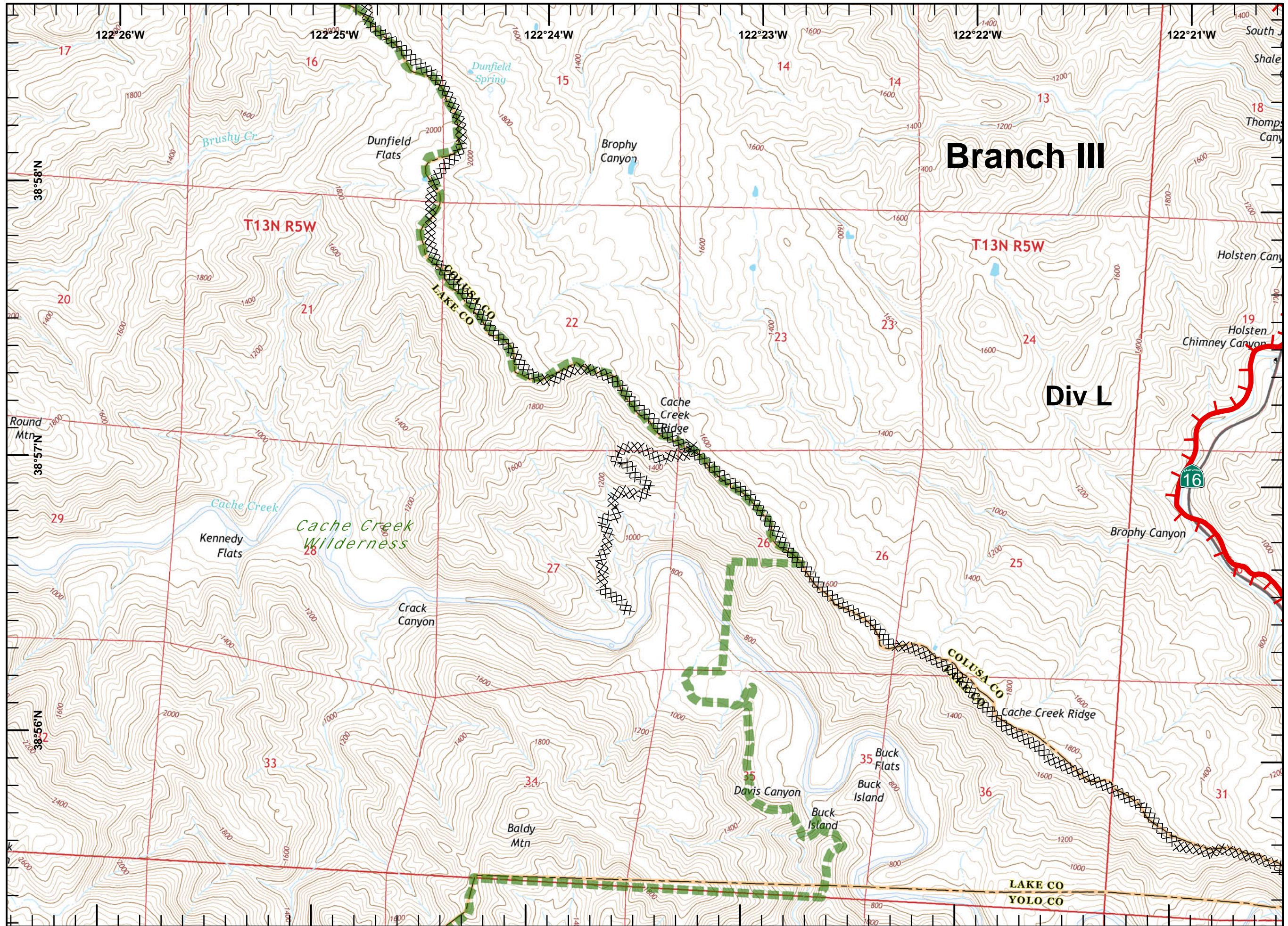
- Division
- Branch
- Drop Point
- Completed Line
- Uncontrolled Fire Edge
- Completed Dozer Line
- Proposed Dozer Line
- Transmission Lines
- Cash Creek Wilderness
- Substations
- Communication Tower
- Dip Sites
- Helispot
- Staging Area
- Sling Site
- Mobile Weather Unit
- Fuel Station

	1	2	
3	4	5	6
7	8	9	10
11	12	13	14
15	16	17	18
	19		



1:24,000

Postler
 August 03, 2015
 0255





IAP MAP

Rocky Incident
CA-LNU-006984

August 3, 2015

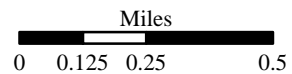
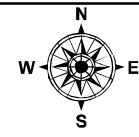
0700-0700

NAD 83

Page 10 of 19

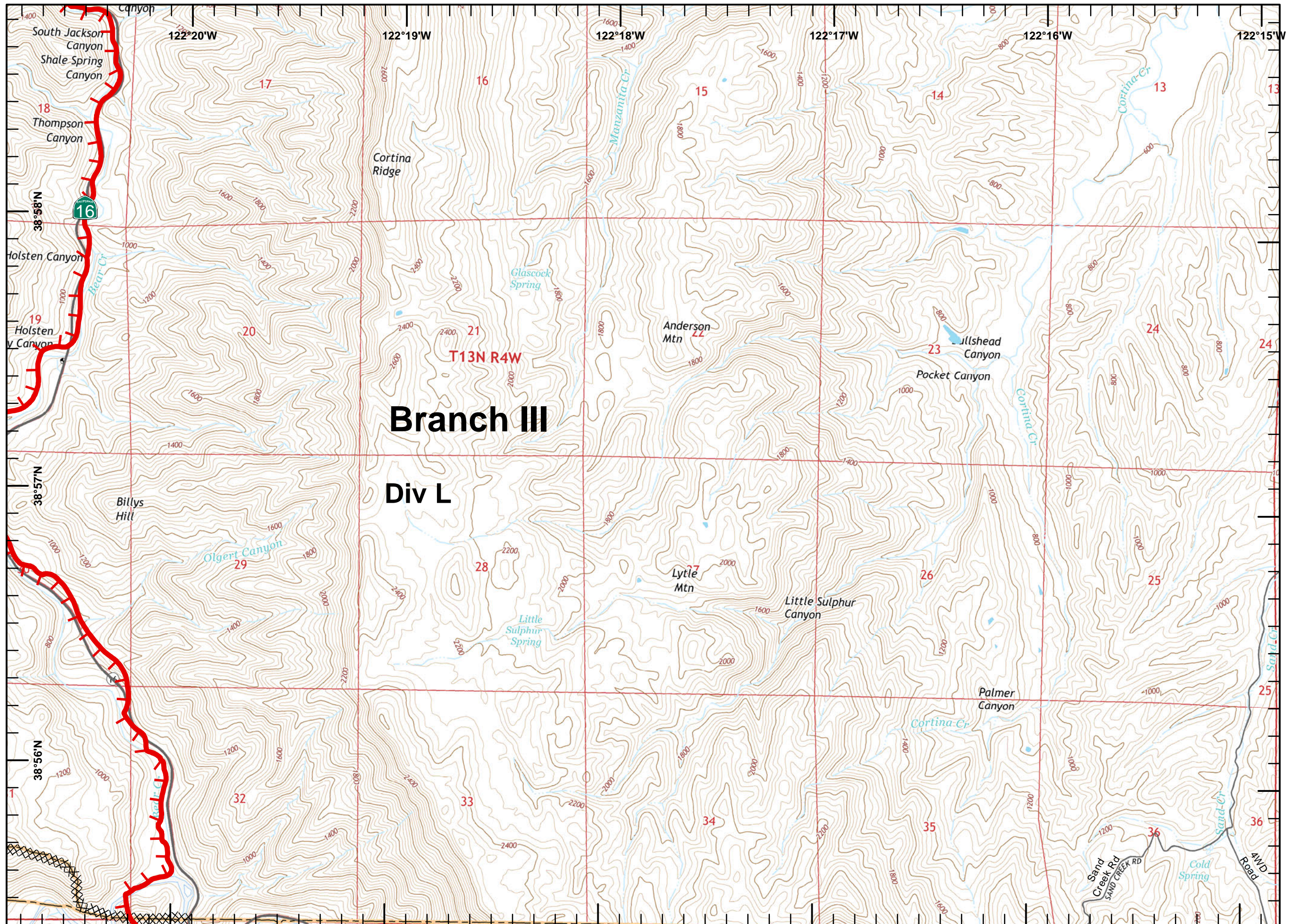
- Division
- Branch
- Drop Point
- Completed Line
- Uncontrolled Fire Edge
- Completed Dozer Line
- Proposed Dozer Line
- Transmission Lines
- Cash Creek Wilderness
- Substations
- Communication Tower
- Dip Sites
- Helispot
- Staging Area
- Sling Site
- Mobile Weather Unit
- Fuel Station

	1	2	
3	4	5	6
7	8	9	10
11	12	13	14
15	16	17	18
	19		



1:24,000

Postler
August 03, 2015
0256





IAP MAP
 Rocky Incident
 CA-LNU-006984
 August 3, 2015
 0700-0700
 NAD 83
 Page 11 of 19

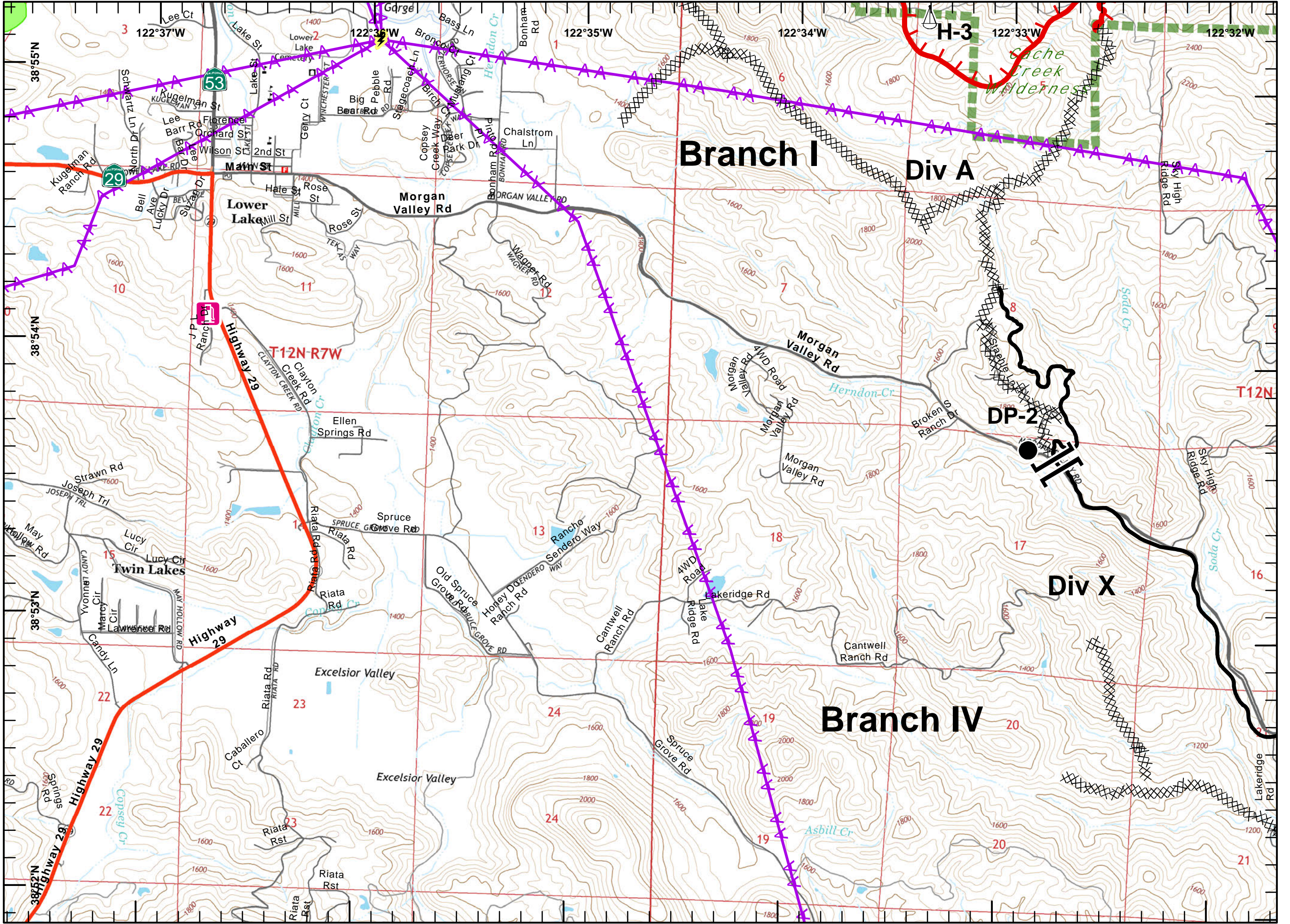
- Division
- Branch
- Drop Point
- Completed Line
- Uncontrolled Fire Edge
- Completed Dozer Line
- Proposed Dozer Line
- Transmission Lines
- Cash Creek Wilderness
- Substations
- Communication Tower
- Dip Sites
- Helispot
- Staging Area
- Sling Site
- Mobile Weather Unit
- Fuel Station

	1	2		
3	4	5	6	
7	8	9	10	
11	12	13	14	
15	16	17	18	
	19			

Miles
 0 0.125 0.25 0.5

1:24,000

Postler
 August 03, 2015
 0256





IAP MAP

Rocky Incident
 CA-LNU-006984
 August 3, 2015
 0700-0700

NAD 83
 Page 12 of 19

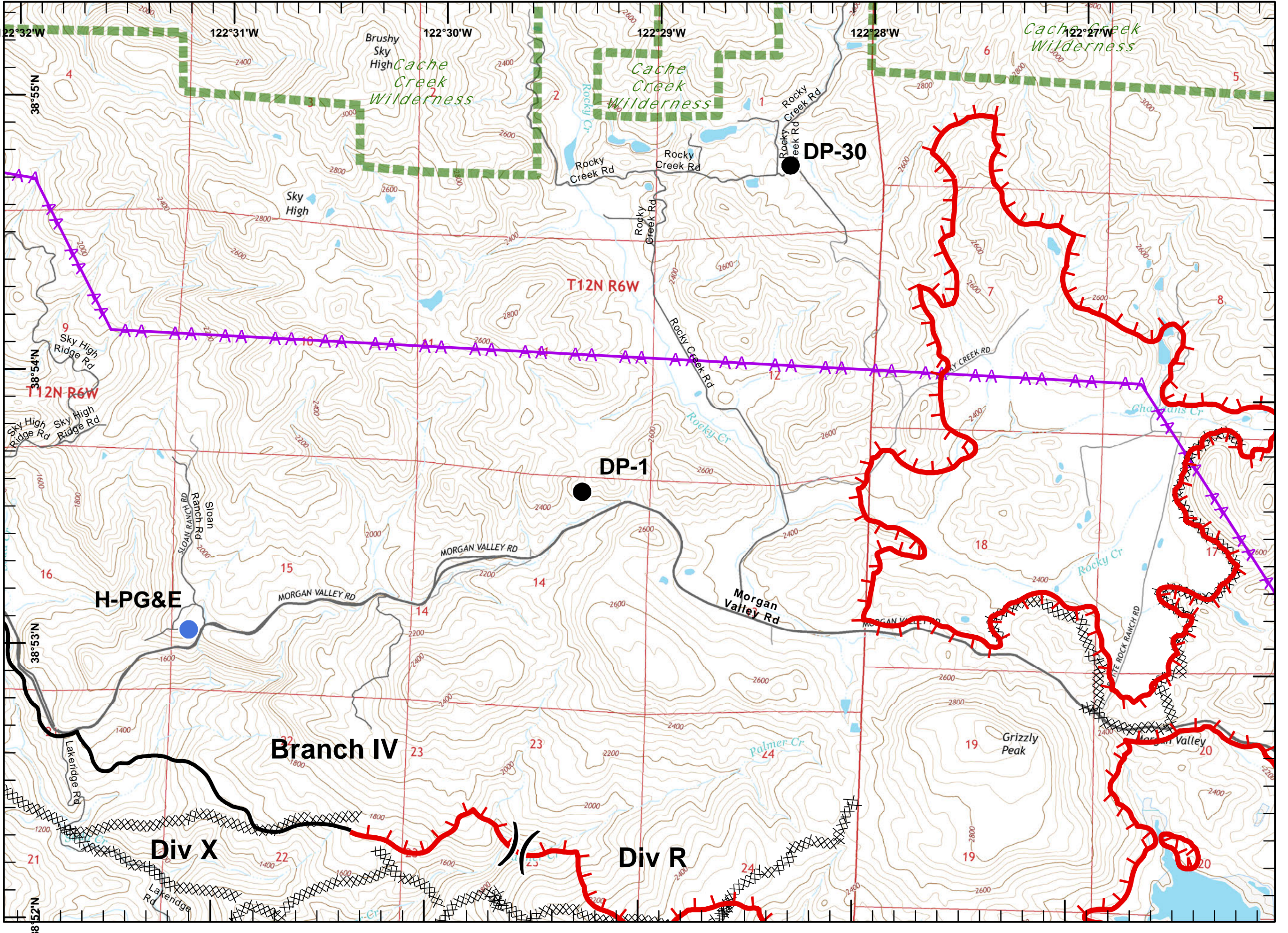
- Division
- Branch
- Drop Point
- Completed Line
- Uncontrolled Fire Edge
- Completed Dozer Line
- Proposed Dozer Line
- Transmission Lines
- Cash Creek Wilderness
- Substations
- Communication Tower
- Dip Sites
- Helispot
- Staging Area
- Sling Site
- Mobile Weather Unit
- Fuel Station

	1	2		
3	4	5	6	
7	8	9	10	
11	12	13	14	
15	16	17	18	
	19			

Miles
 0 0.125 0.25 0.5

1:24,000

Postler
 August 03, 2015
 0256



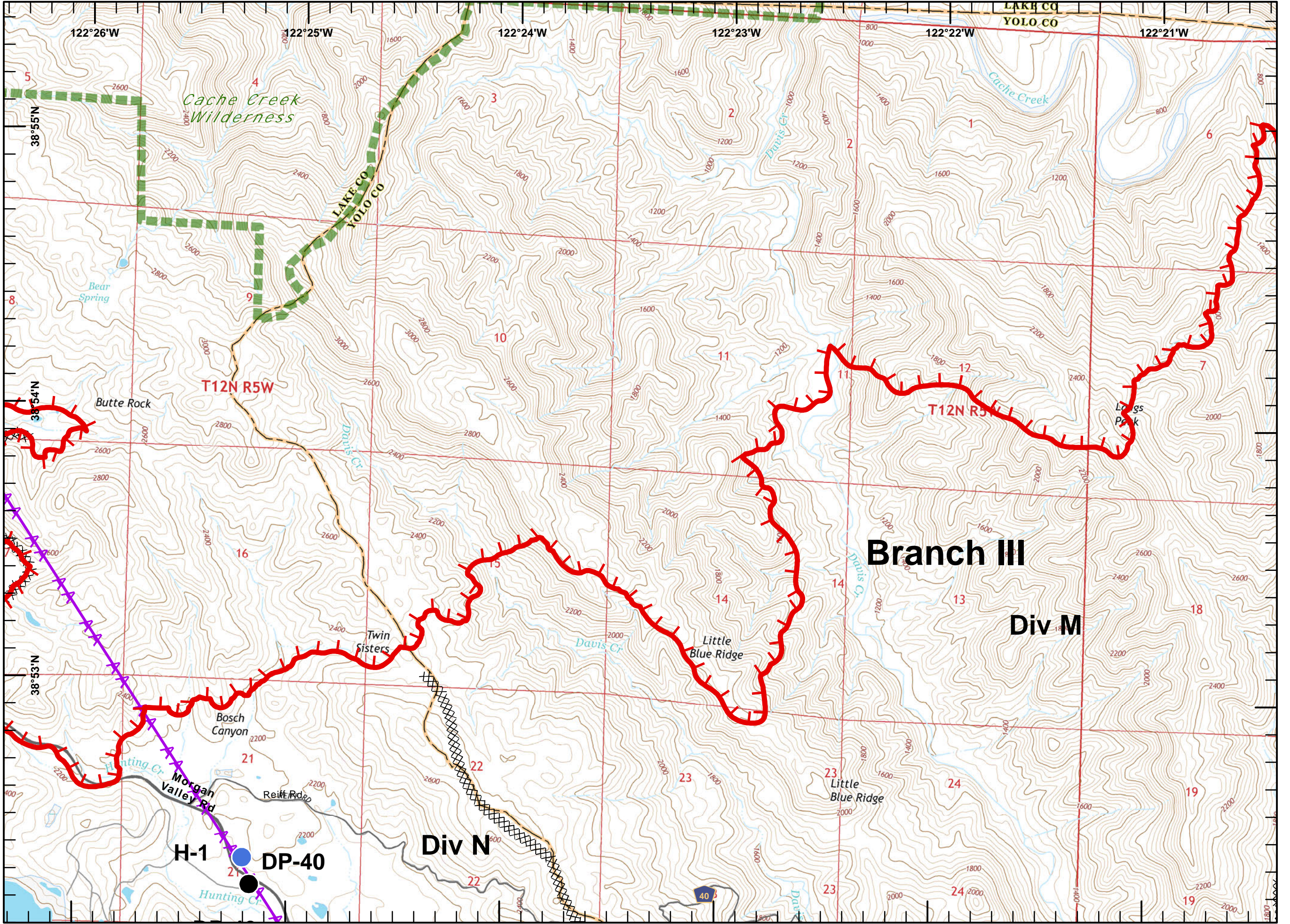


IAP MAP
 Rocky Incident
 CA-LNU-006984
 August 3, 2015
 0700-0700
 NAD 83
 Page 13 of 19

- Division
- Branch
- Drop Point
- Completed Line
- Uncontrolled Fire Edge
- Completed Dozer Line
- Proposed Dozer Line
- Transmission Lines
- Cash Creek Wilderness
- Substations
- Communication Tower
- Dip Sites
- Helispot
- Staging Area
- Sling Site
- Mobile Weather Unit
- Fuel Station

	1	2	
3	4	5	6
7	8	9	10
11	12	13	14
15	16	17	18
	19		

North arrow and scale bar (0 to 0.5 miles).
 Scale: 1:24,000
 Postler August 03, 2015 0256





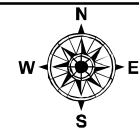
IAP MAP

Rocky Incident
CA-LNU-006984
August 3, 2015
0700-0700

NAD 83
Page 14 of 19

- Division
- Branch
- Drop Point
- Completed Line
- Uncontrolled Fire Edge
- Completed Dozer Line
- Proposed Dozer Line
- Transmission Lines
- Cash Creek Wilderness
- Substations
- Communication Tower
- Dip Sites
- Helispot
- Staging Area
- Sling Site
- Mobile Weather Unit
- Fuel Station

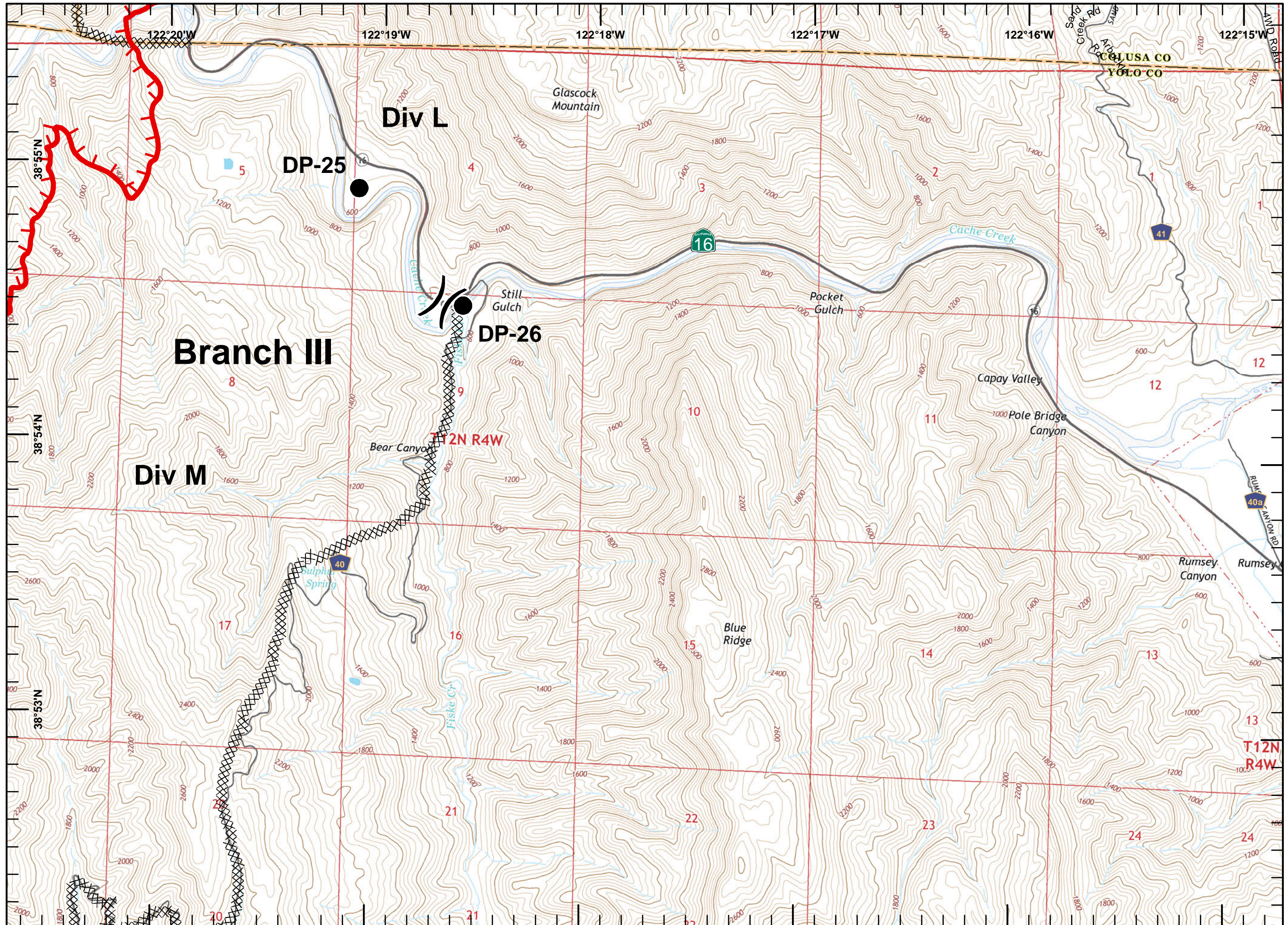
	1	2		
3	4	5	6	
7	8	9	10	
11	12	13	14	
15	16	17	18	
	19			



Miles
0 0.125 0.25 0.5

1:24,000

Postler
August 03, 2015
0256



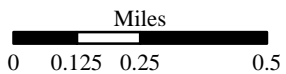
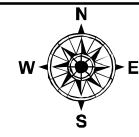


IAP MAP

Rocky Incident
 CA-LNU-006984
 August 3, 2015
 0700-0700
 NAD 83
 Page 16 of 19

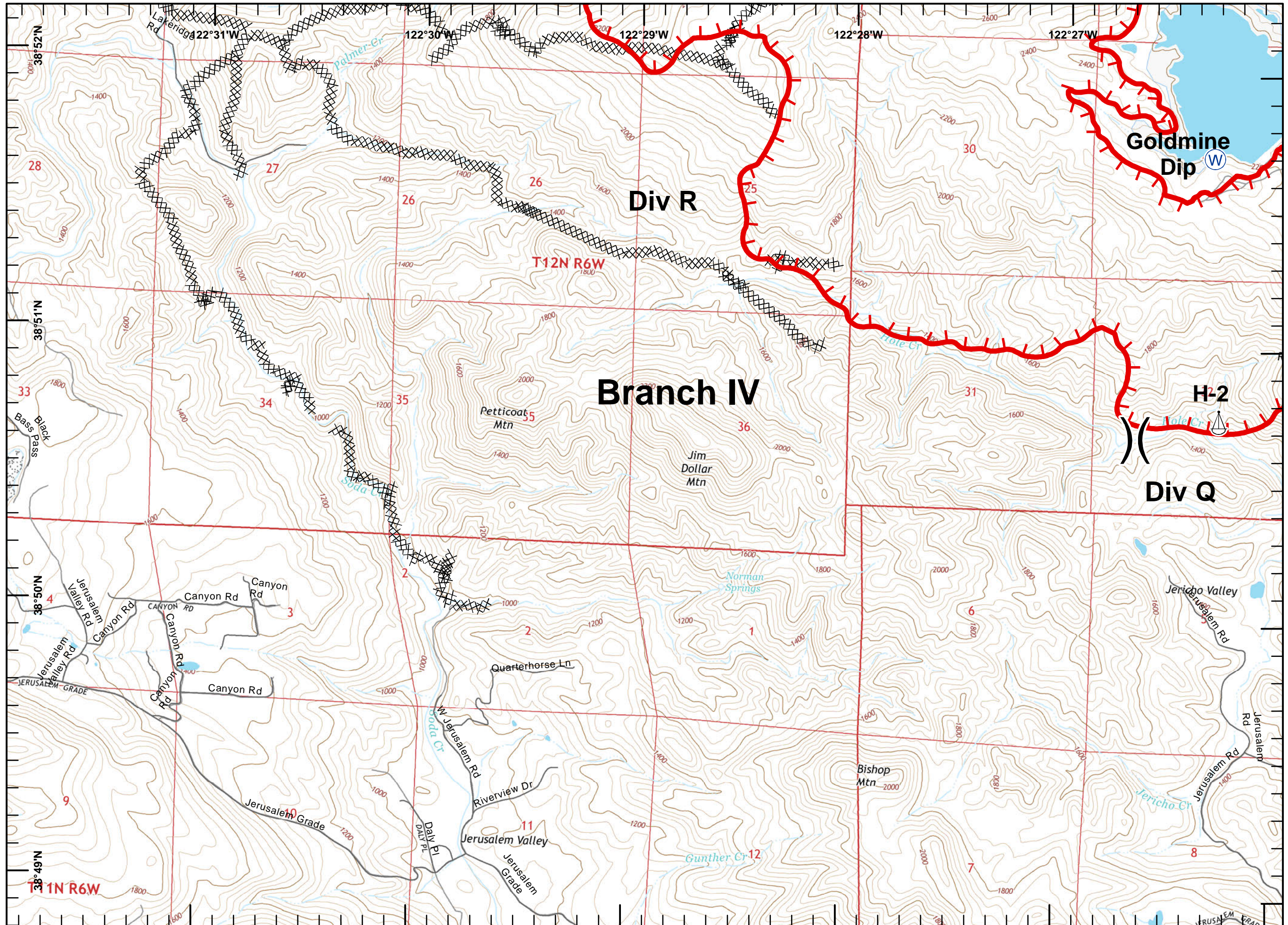
- Division
- Branch
- Drop Point
- Completed Line
- Uncontrolled Fire Edge
- Completed Dozer Line
- Proposed Dozer Line
- Transmission Lines
- Cash Creek Wilderness
- Substations
- Communication Tower
- Dip Sites
- Helispot
- Staging Area
- Sling Site
- Mobile Weather Unit
- Fuel Station

	1	2	
3	4	5	6
7	8	9	10
11	12	13	14
15	16	17	18
	19		



1:24,000

Postler
 August 03, 2015
 0257



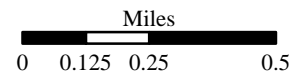
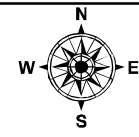


IAP MAP

Rocky Incident
 CA-LNU-006984
 August 3, 2015
 0700-0700
 NAD 83
 Page 17 of 19

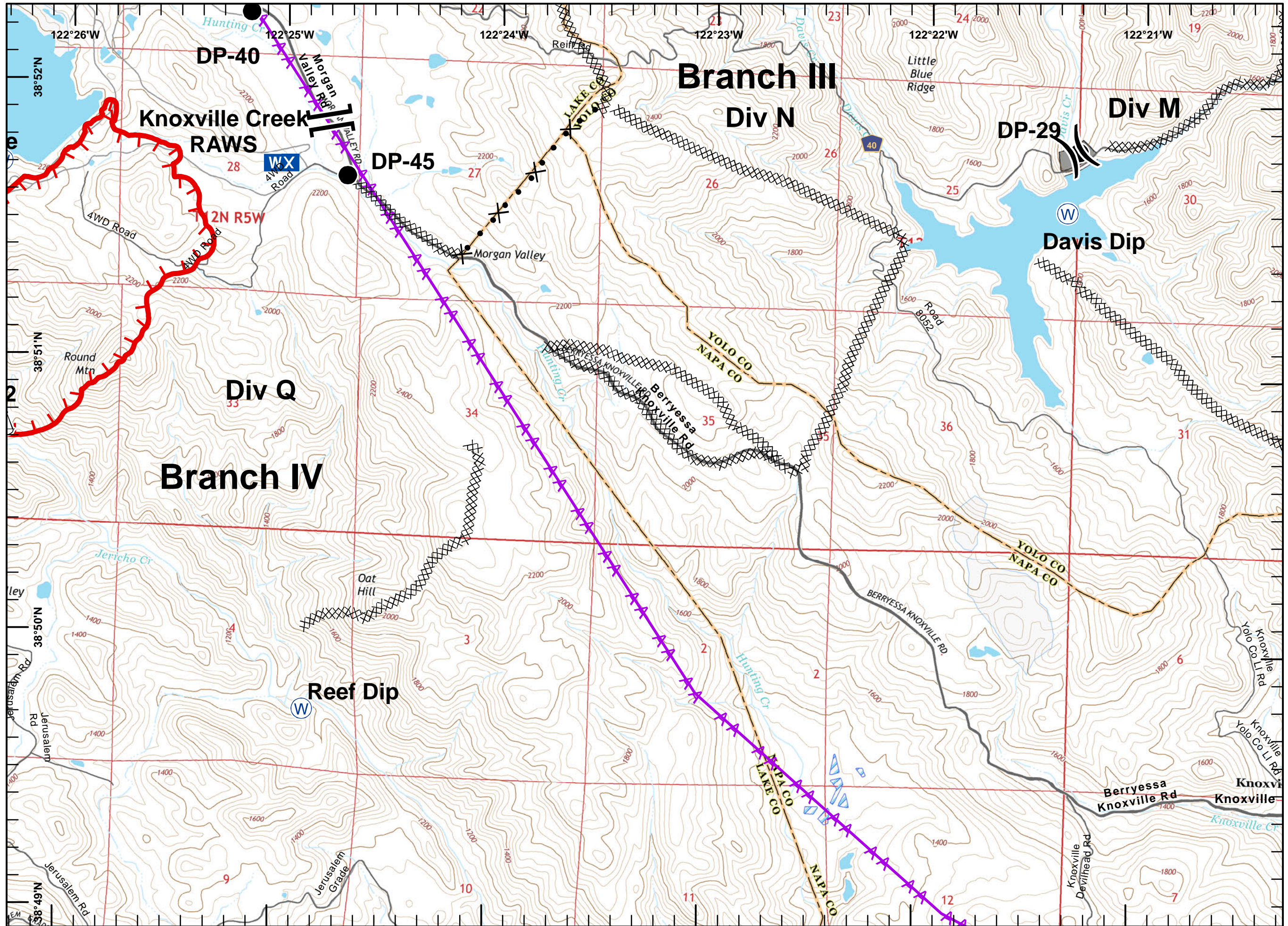
- Division
- Branch
- Drop Point
- Completed Line
- Uncontrolled Fire Edge
- Completed Dozer Line
- Proposed Dozer Line
- Transmission Lines
- Cash Creek Wilderness
- Substations
- Communication Tower
- Dip Sites
- Helispot
- Staging Area
- Sling Site
- Mobile Weather Unit
- Fuel Station

	1	2		
3	4	5	6	
7	8	9	10	
11	12	13	14	
15	16	17	18	
		19		



1:24,000

Postler
 August 03, 2015
 0257





IAP MAP

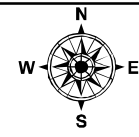
Rocky Incident
CA-LNU-006984
August 3, 2015
0700-0700

NAD 83

Page 18 of 19

- Division
- Branch
- Drop Point
- Completed Line
- Uncontrolled Fire Edge
- Completed Dozer Line
- Proposed Dozer Line
- Transmission Lines
- Cash Creek Wilderness
- Substations
- Communication Tower
- Dip Sites
- Helispot
- Staging Area
- Sling Site
- Mobile Weather Unit
- Fuel Station

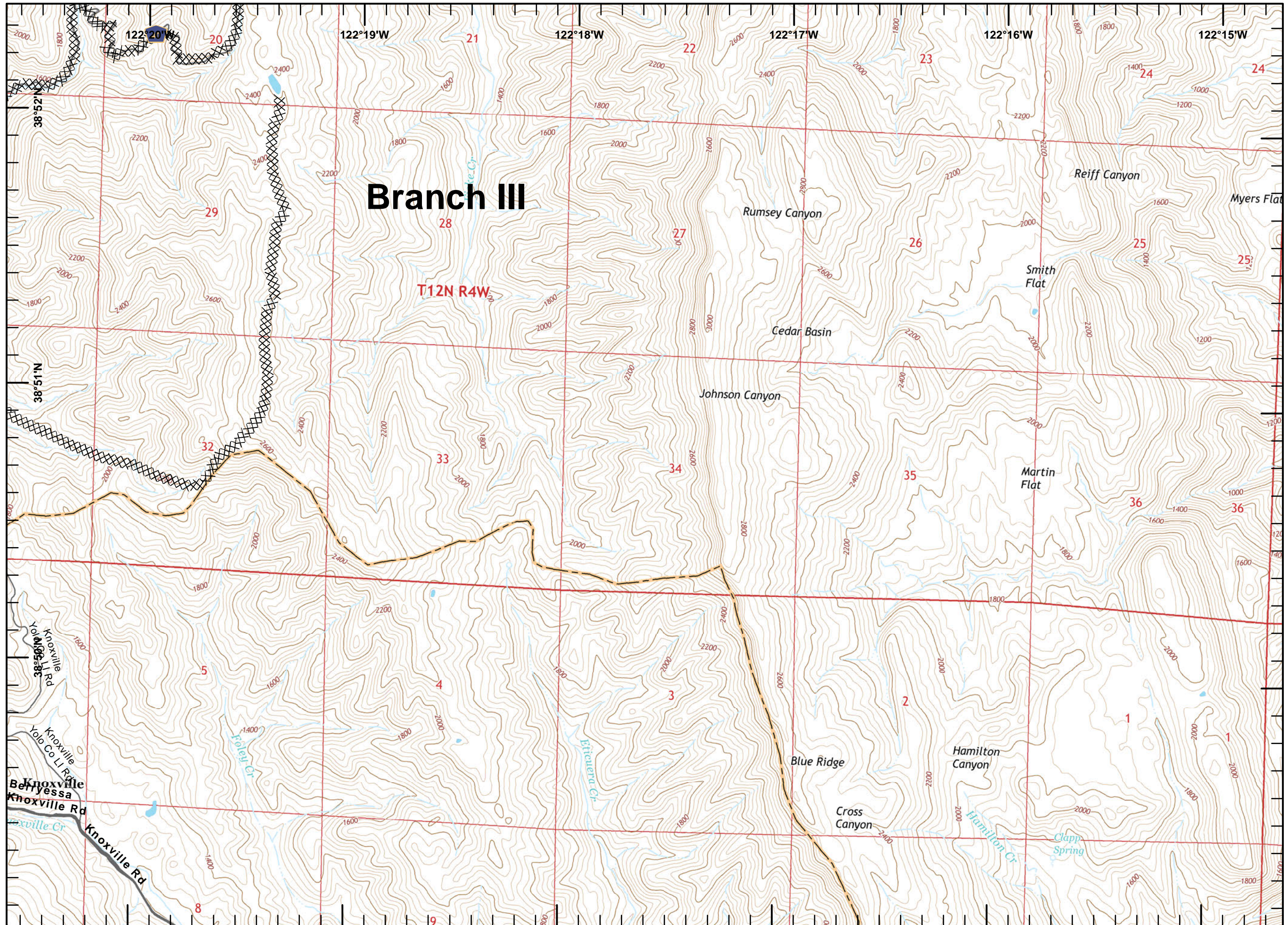
	1	2	
3	4	5	6
7	8	9	10
11	12	13	14
15	16	17	18
			19



Miles
0 0.125 0.25 0.5

1:24,000

Postler
August 03, 2015
0257





IAP MAP

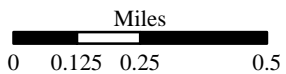
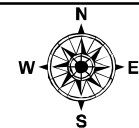
Rocky Incident
CA-LNU-006984
August 3, 2015
0700-0700

NAD 83

Page 19 of 19

- Division
- Branch
- Drop Point
- Completed Line
- Uncontrolled Fire Edge
- Completed Dozer Line
- Proposed Dozer Line
- Transmission Lines
- Cash Creek Wilderness
- Substations
- Communication Tower
- Dip Sites
- Helispot
- Staging Area
- Sling Site
- Mobile Weather Unit
- Fuel Station

	1	2		
3	4	5	6	
7	8	9	10	
11	12	13	14	
15	16	17	18	
		19		



1:24,000

Postler
August 03, 2015
0257

