

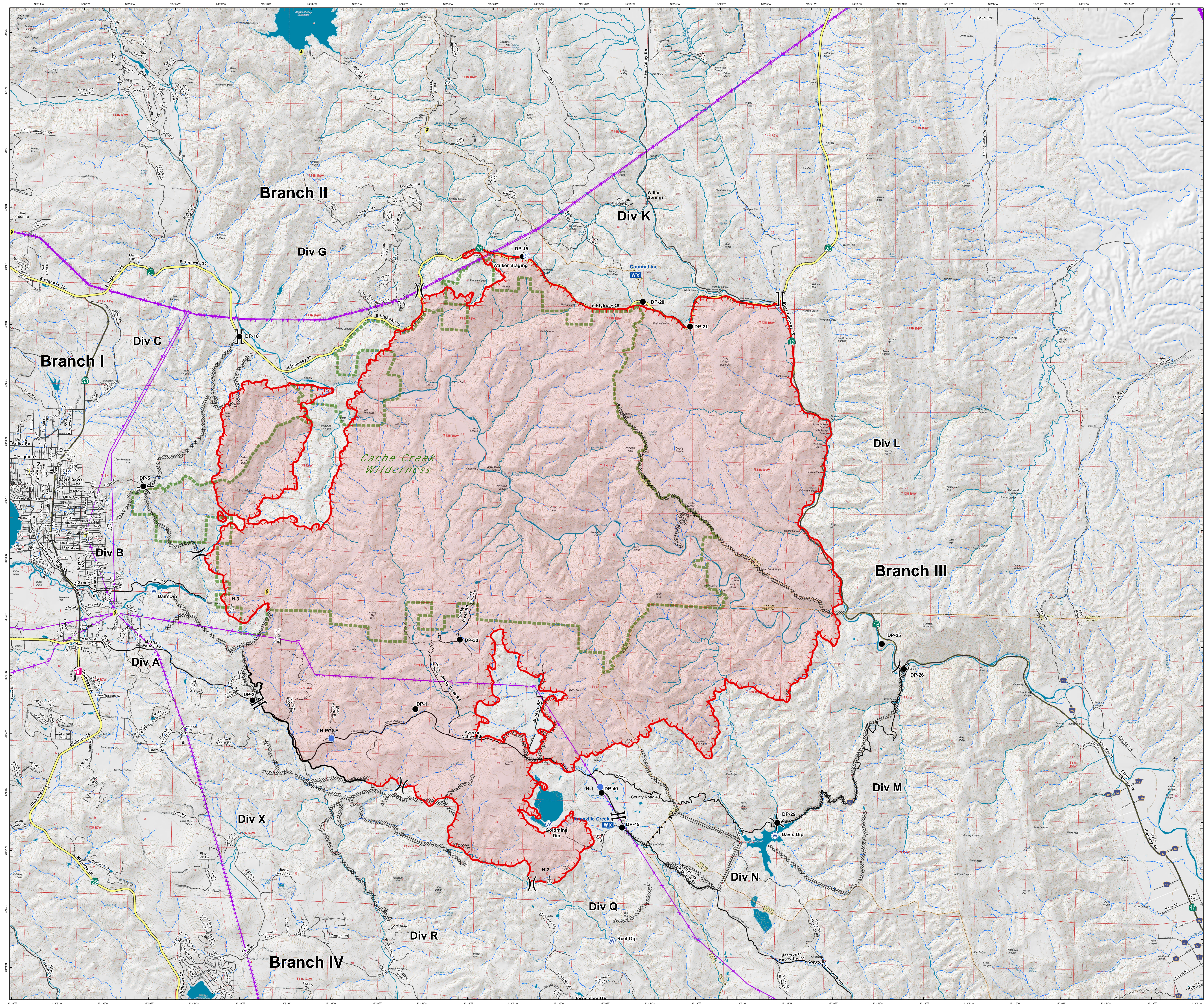


Rocky Incident CA-LNU-006984

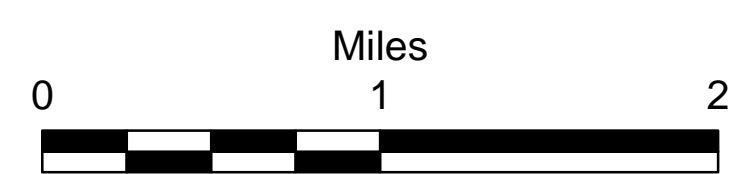
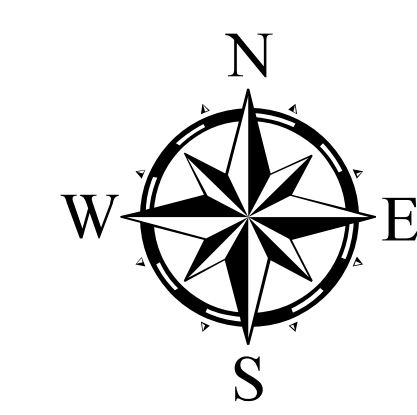
Operations Map

8/3/2015

Fire Perimeter as of
08/02/2015 1834hrs



- Branch
- Division
- Uncontrolled Fire Edge
- Completed Dozer Line
- Completed Line
- Proposed Dozer Line
- Drop Point
- Helispot
- Mobile Weather Unit
- Repeater
- Sling Site
- Staging Area
- Water Source
- Fuel
- Substations
- Transmission Lines
- Cache Creek Wilderness



Datum: NAD 83 1:36,000

DISCLAIMER: The displayed incident data is approximate and should only be used for informational purposes. The information contained in supporting base layers was generated from GIS data maintained by different sources and agencies and is not necessarily accurate to mapping, surveying, or engineering.

IMT 2
August 03 2015
0822 hrs