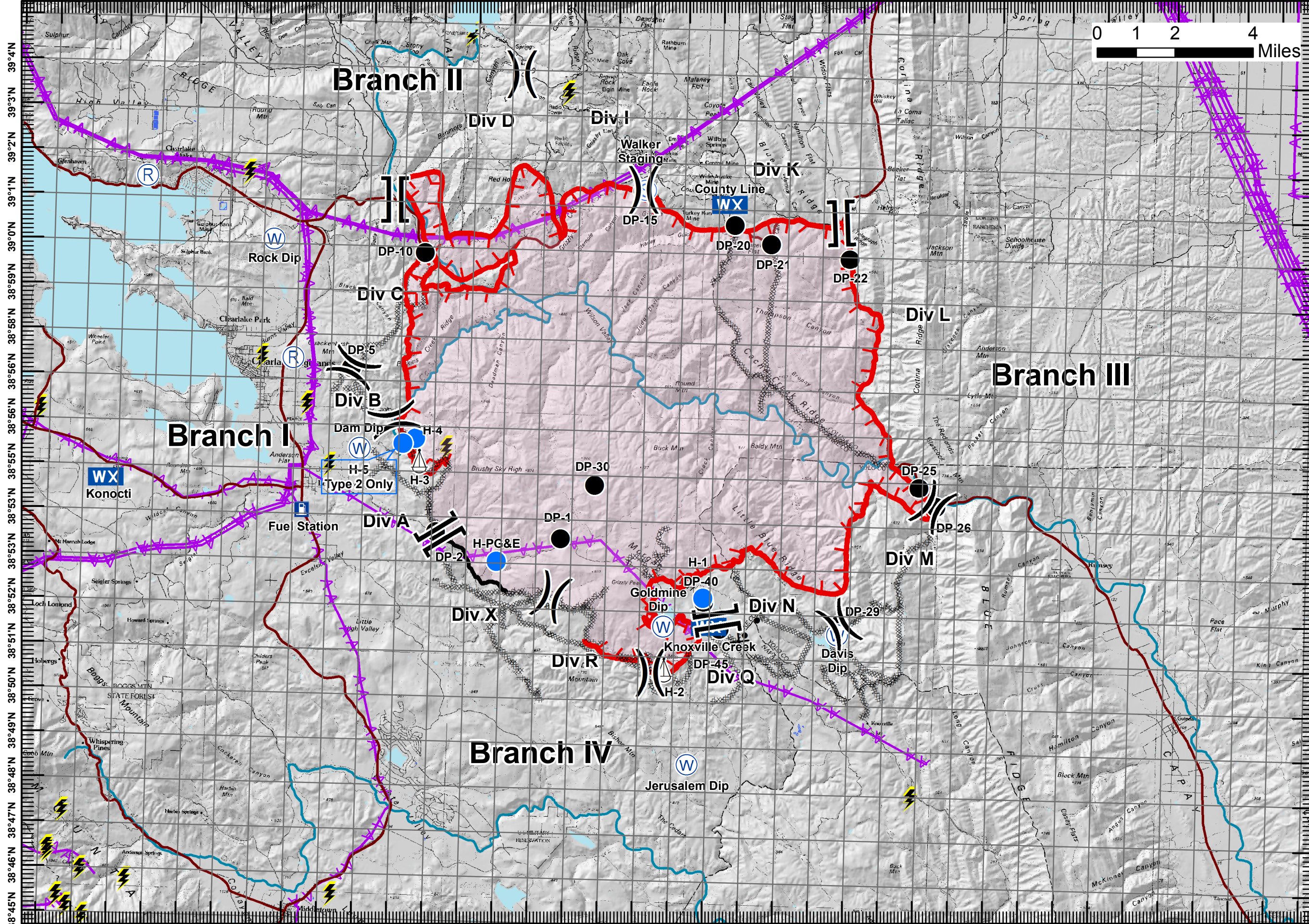


122°45'W 122°43'W 122°41'W 122°38'W 122°37'W 122°35'W 122°33'W 122°31'W 122°29'W 122°26'W 122°25'W 122°23'W 122°21'W 122°19'W 122°17'W 122°15'W 122°13'W 122°11'W 122°8'W



AIR OPERATIONS MAP

Rocky Incident

CA-LNU-006984

August 4, 2015

- Division
- Branch
- Drop Point
- Dip Site
- Repeater
- Staging Area
- Sling Site
- Heli-spot
- Substation
- Weather Station
- Fueling Station
- Completed Line
- Uncontrolled Fire Edge
- Completed Dozer Line
- Proposed Dozer Line
- Transmission Lines



1:150,000

Team 2 GIS RCC
August 04, 2015
0208