

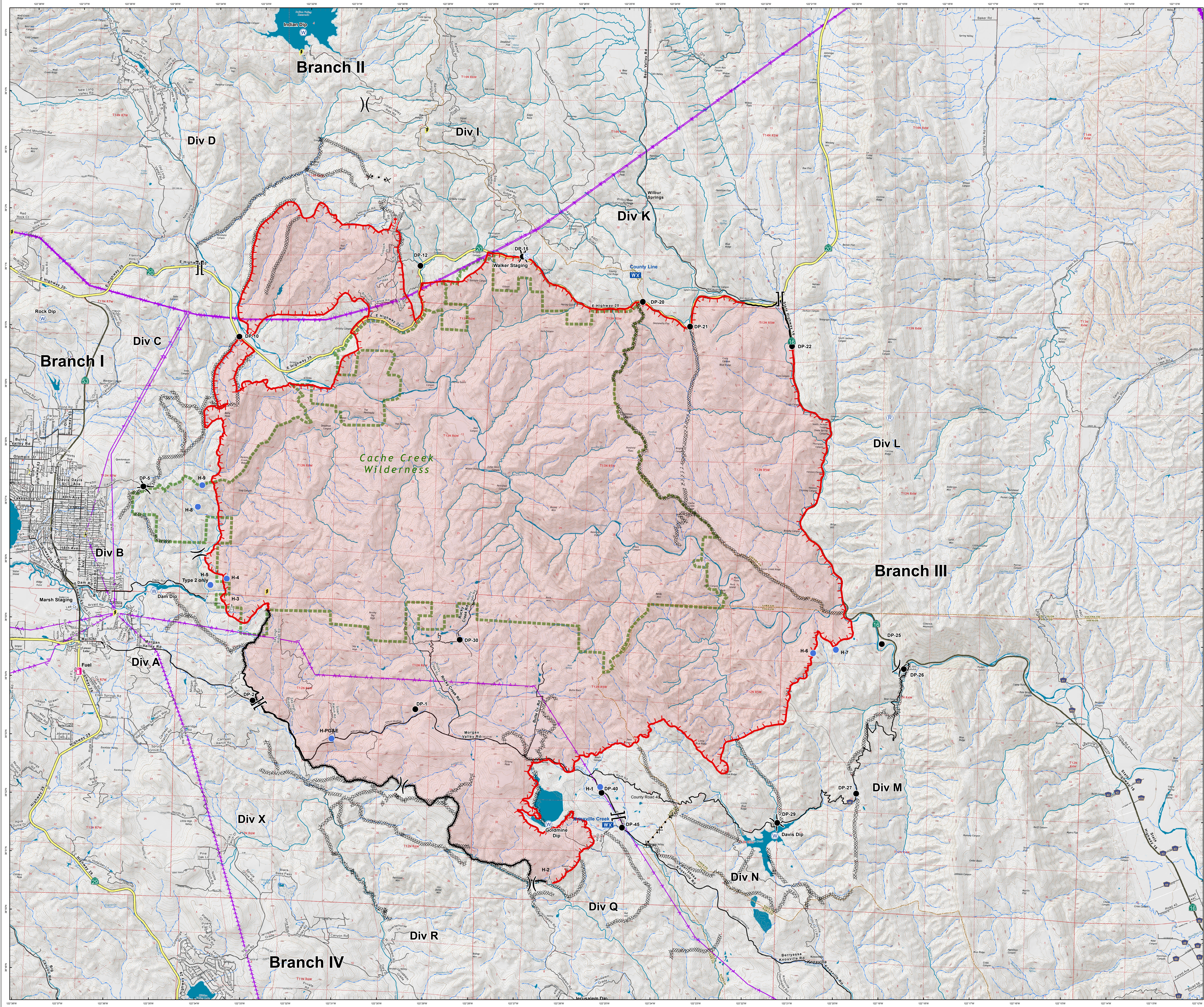


# Rocky Incident CA-LNU-006984

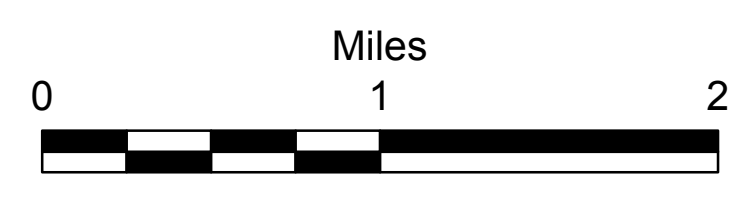
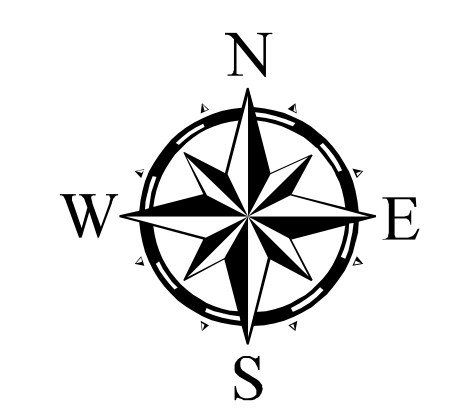
## Operations Map

8/5/2015

Fire Perimeter as of  
08/04/2015 21:30 hrs



- Drop Point
- Helispot
- WX Mobile Weather Unit
- Ⓡ Repeater
- Ⓢ Sling Site
- Ⓢ Staging Area
- Ⓢ Water Source
- Ⓢ Fuel
- ) Division
- || Branch
- Uncontrolled Fire Edge
- Completed Dozer Line
- Completed Line
- · · · Hand Line
- × · × Proposed Dozer Line
- ⚡ Substations
- Transmission Lines
- Cache Creek Wilderness



Datum: NAD 83 1:36,000

DISCLAIMER: The displayed incident data is approximate and should only be used for informational purposes. The information contained in supporting data layers was generated from GIS data maintained by different sources and agencies and is not necessarily accurate to mapping, surveying, or engineering.

IMT 2  
August 05 2015  
0938 hrs