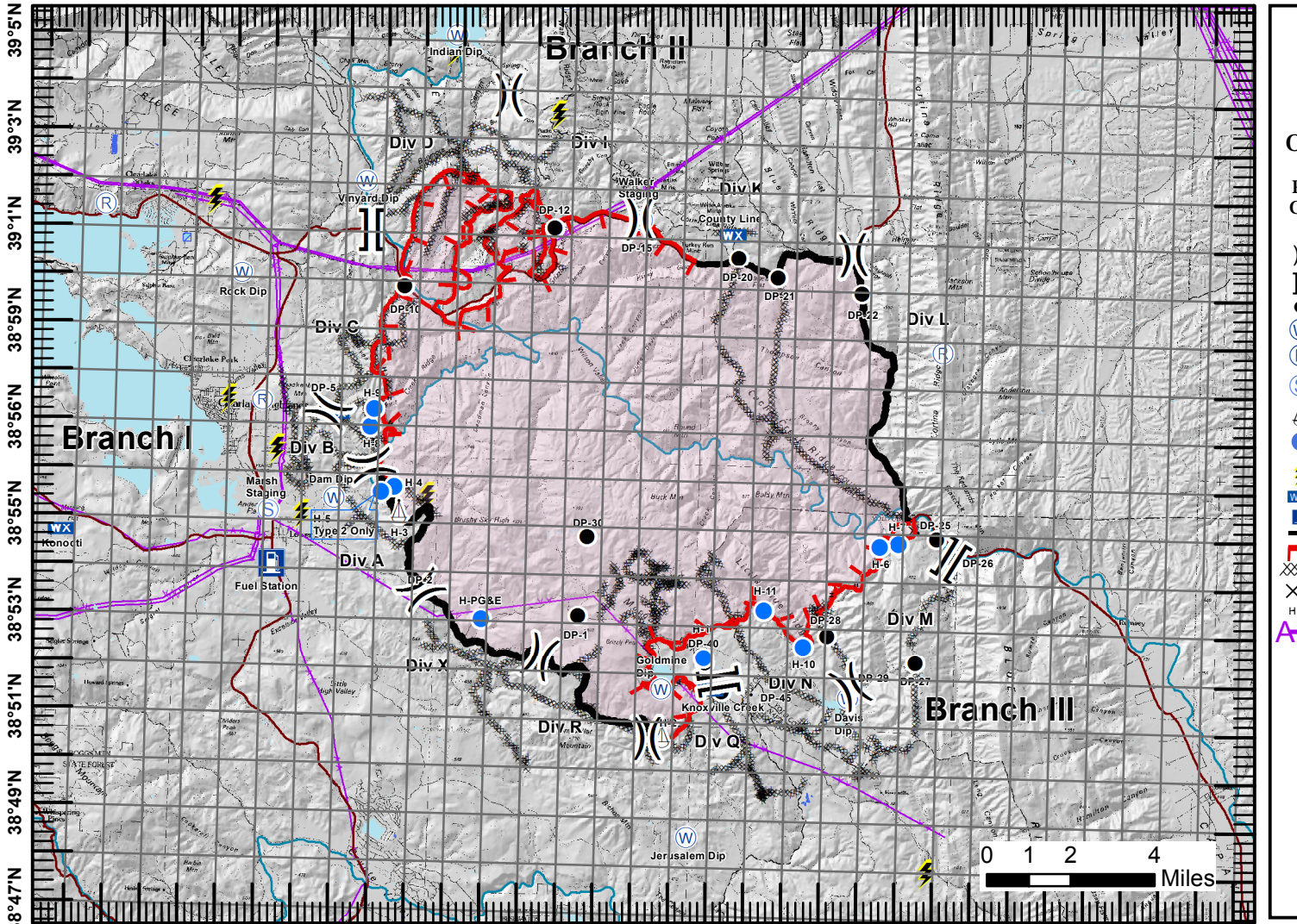


122°41'W 122°38'W 122°35'W 122°32'W 122°29'W 122°26'W 122°23'W 122°20'W 122°17'W 122°14'W 122°11'W

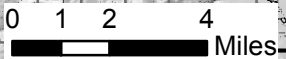


AIR OPERATIONS MAP

Rocky Incident

CA-LNU-006984
August 7, 2015

- () Division
- || Branch
- Drop Point
- (W) Dip Site
- (R) Repeater
- (S) Staging Area
- △ Sling Site
- Heli-spot
- ⚡ Substation
- (WX) Weather Station
- (Gas Pump) Fueling Station
- Completed Line
- Uncontrolled Fire Edge
- Completed Dozer Line
- ⊗ Proposed Dozer Line
- H-H Completed Handline
- AA Transmission Lines



1:250,000 Team 2 GIS RCC August 07, 2015 0258

122°41'W 122°38'W 122°35'W 122°32'W 122°29'W 122°26'W 122°23'W 122°20'W 122°17'W 122°14'W 122°11'W