

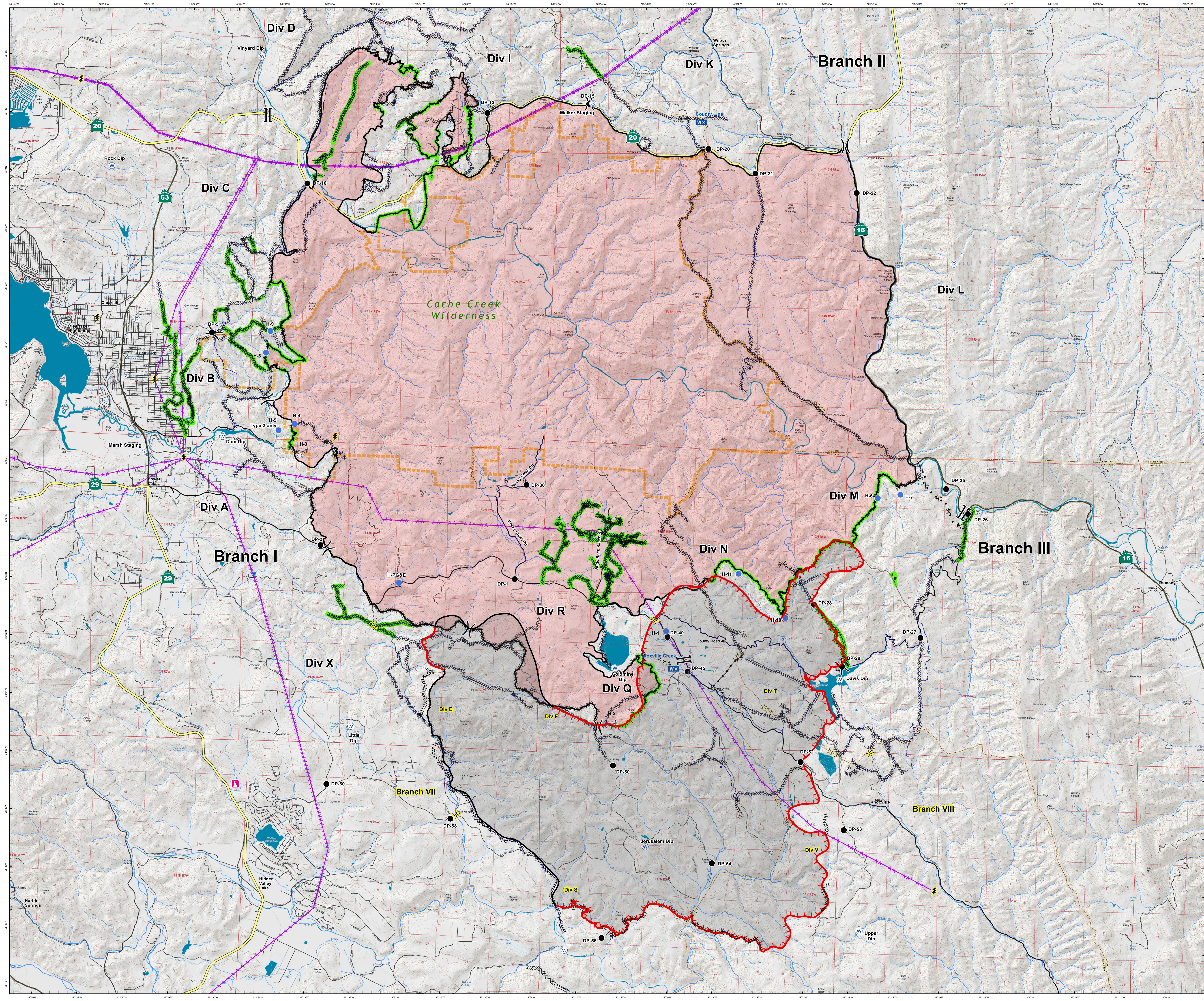


Rocky Incident CA-LNU-006984

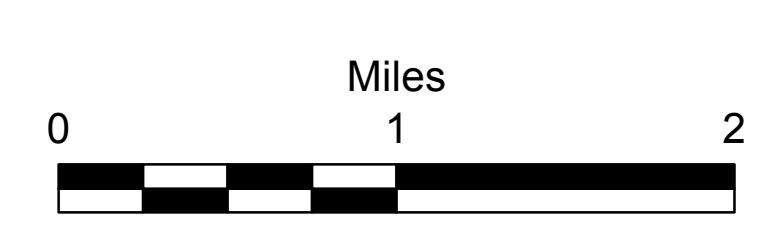
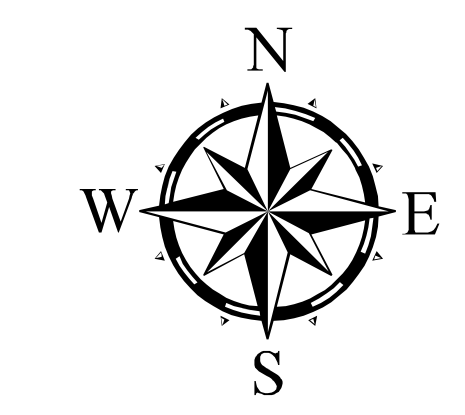
Operations Map

8/13/2015

Fire Perimeter as of
08/10/2015 21:32 hrs



- Rocky Branch
- Rocky Division
- Jerusalem Branch
- Jerusalem Division
- Uncontrolled Fire Edge
- Completed Line
- Completed Dozer Line
- Hand Line
- Fire Suppression Repair
- Complete or Not Required
- Proposed Dozer Line
- Drop Point
- Helispot
- Mobile Weather Unit
- Repeater
- Sling Site
- Staging Area
- Water Source
- Substations
- Transmission lines
- Cache Creek Wilderness



Datum: NAD 83 1:36,000

DISCLAIMER:
The displayed incident data is approximate and should only be used for informational purposes. The information contained in supporting base layers was generated from GIS data maintained by different sources and agencies and is not necessarily accurate to mapping, surveying, or engineering standards.

IMT 2
August 13, 2015
01:28 hours