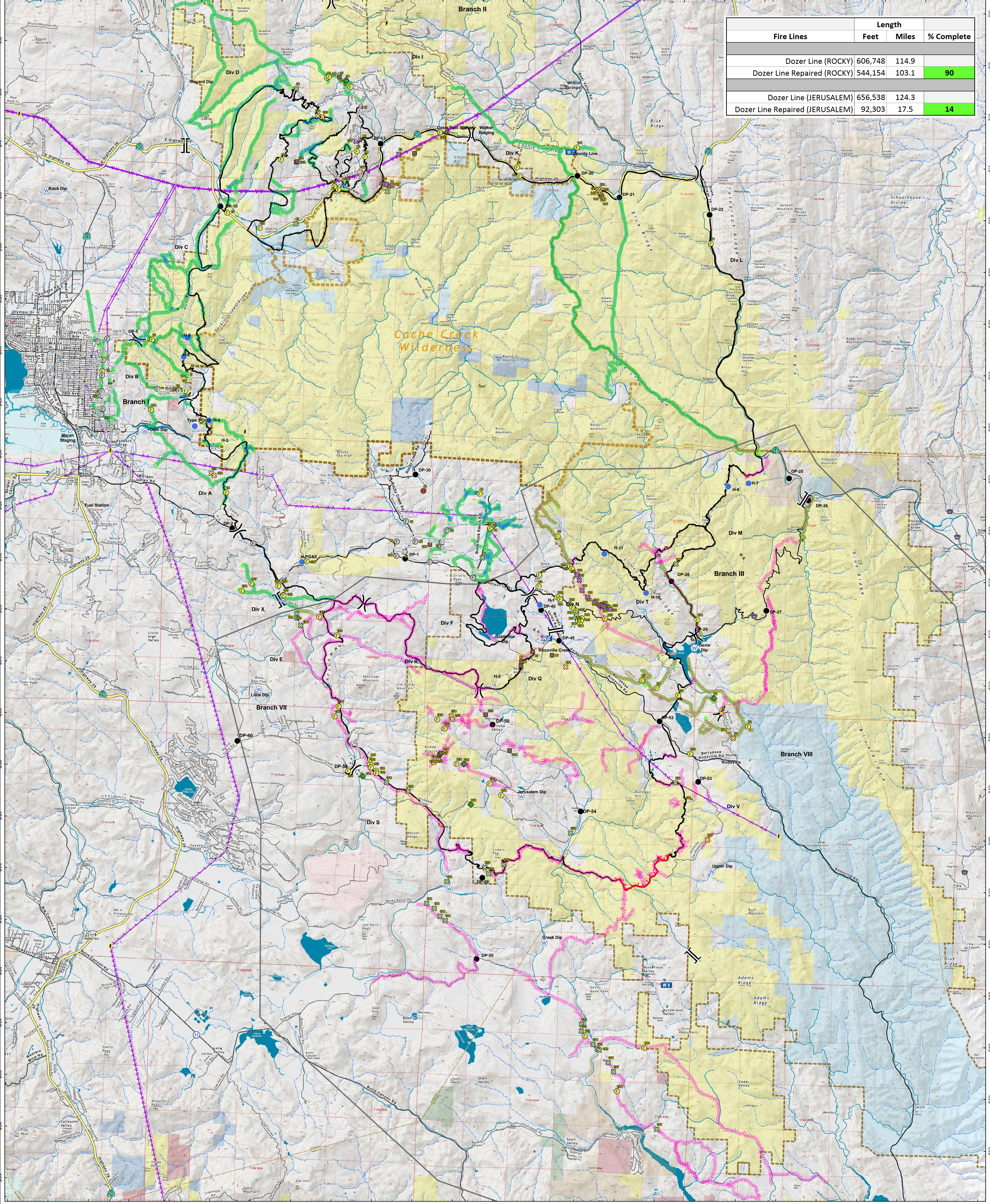


Fire Lines	Length		
	Feet	Miles	% Complete
Dozer Line (ROCKY)	606,748	114.9	
Dozer Line Repaired (ROCKY)	544,154	103.1	90
Dozer Line (JERUSALEM)	656,538	124.3	
Dozer Line Repaired (JERUSALEM)	92,303	17.5	14



CAL FIRE

Suppression Repair Map

August 18, 2015

IMT 2
August 17 2015
2044 hrs

DISCLAIMER: The displayed incident data is approximate and should only be used for informational purposes. The information contained in supporting base layers was generated from GIS data maintained by different sources and agencies and is not necessarily accurate to mapping, sampling, or engineering standards.

Rocky Incident - CA-LNU-006984

- Repair Completed
- Uncontrolled Fire Edge
- Jerusalem Dozer Line
- Rocky Dozer Line
- Completed Line
- H - H Hand Line
- Improved Road
- Major Roads
- Surface Streets
- Transmission Lines

0 1 2 3 4 5 Miles

1:40,000 Datum: NAD 83

Ownership

- CA Dept. of Fish and Wildlife
- Other State Lands
- USDA Forest Service
- Bureau of Land Management
- Bureau of Indian Affairs
- Berryessa/Snow Mtn Natl Monument

Repair Needs

- Cattleguard Damage
- Chipping Slash
- Culvert Damage
- Dozer Push
- Fence Damage
- Hazard Tree
- Lop and Scatter Trees
- Meadow Damage
- Other
- Road Needs Repair
- Water Course Crossing
- Water Drafting Location
- Waterbar Needed

Division

- Division
- Branch
- Drop Point
- Helispot
- Mobile Weather Unit
- Repeater
- Sling Site
- Staging Area
- Water Source
- Fuel
- Substations

Rocky Perimeter mapped as of 08/14/2015 20:39 hrs
Jerusalem Perimeter mapped as of 8/16/2015 22:11 hrs

Jerusalem Incident - CA-LNU-007410

Completed Repairs

- Chipping Slash
- Culvert Damage
- Dozer Push
- Fence Damage
- Hazard Tree
- Road Needs Repair
- Water Course Crossing
- Waterbar Needed
- Other

