

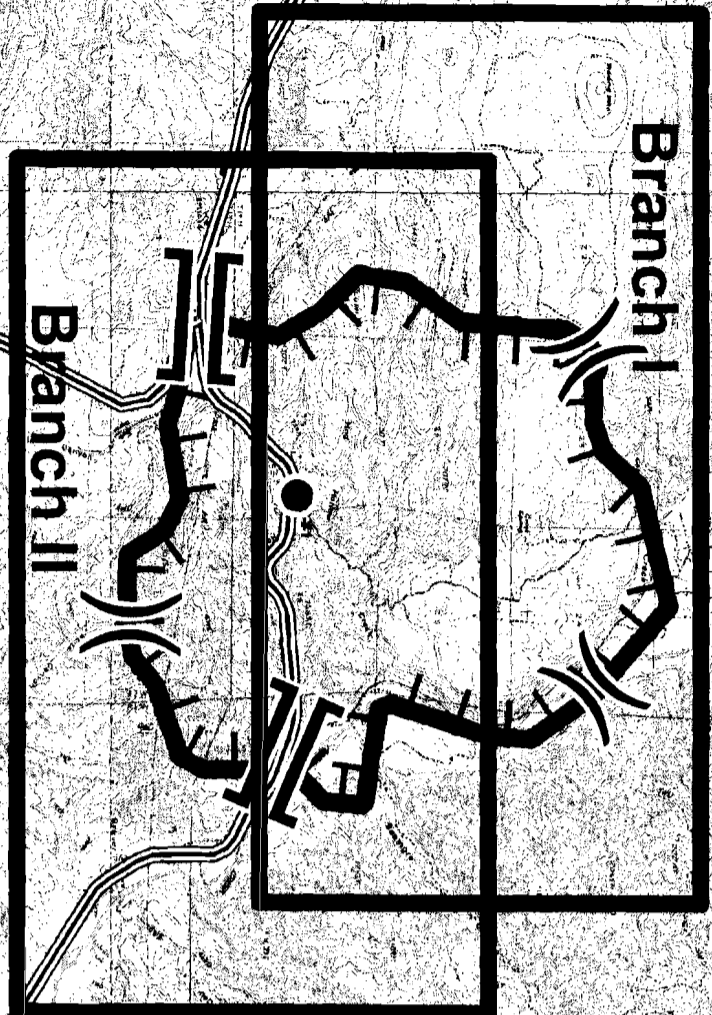
Legend

- () Division
- || Branch
- ≡ Uncontrolled Fire Edge
- ≡ Highways
- Drop Point

J. Harvey
 August 13, 2012
 2100 Hours

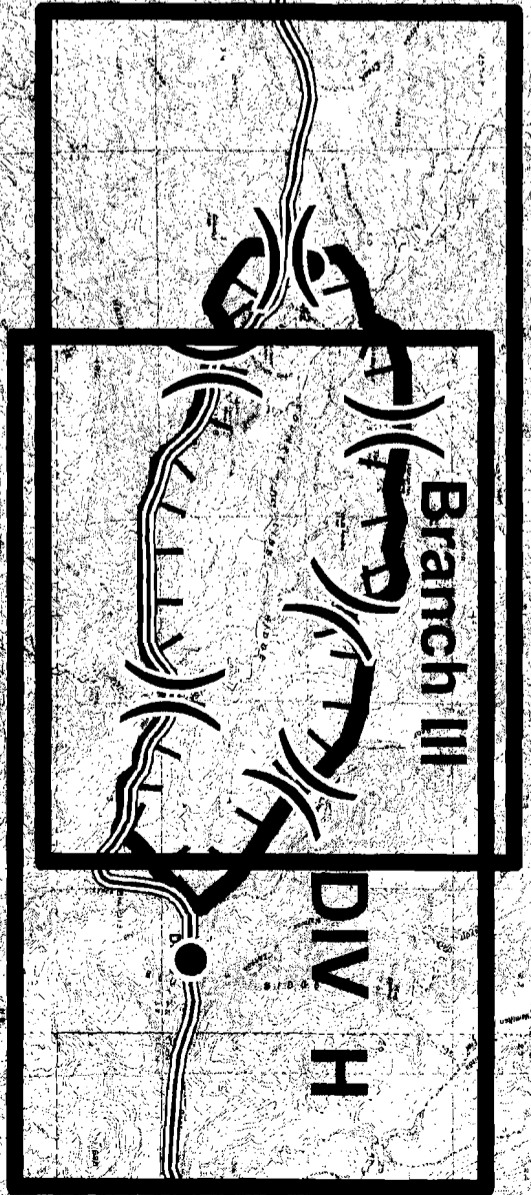
122°37'W 122°36'W 122°35'W 122°34'W 122°33'W 122°32'W 122°31'W 122°30'W 122°29'W 122°28'W 122°27'W 122°26'W 122°25'W 122°24'W 122°23'W 122°22'W 122°21'W

Map 1 of 4



Map 2 of 4

Map 3 of 4

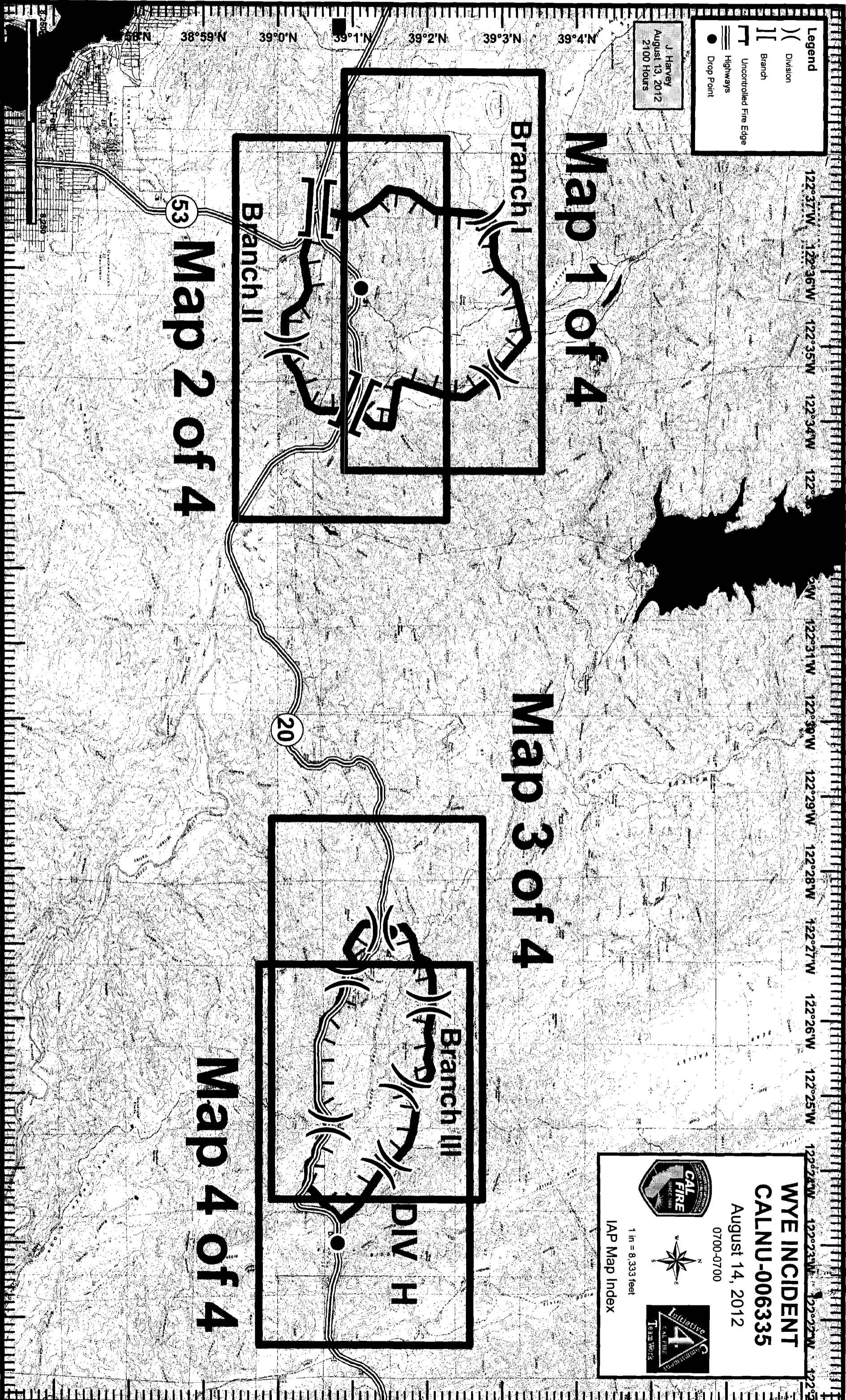


Map 4 of 4

WYE INCIDENT
CALNU-006335
 August 14, 2012
 0700-0700




1 in = 8,333 feet
 IAP Map Index



Legend

- () Division
- || Branch
- Uncontrolled Fire Edge
- == Highways
- Drop Point

J. Harvey
August 13, 2012
2100 Hours

Branch I

DIV B

DIV A

DIV H

DP #1

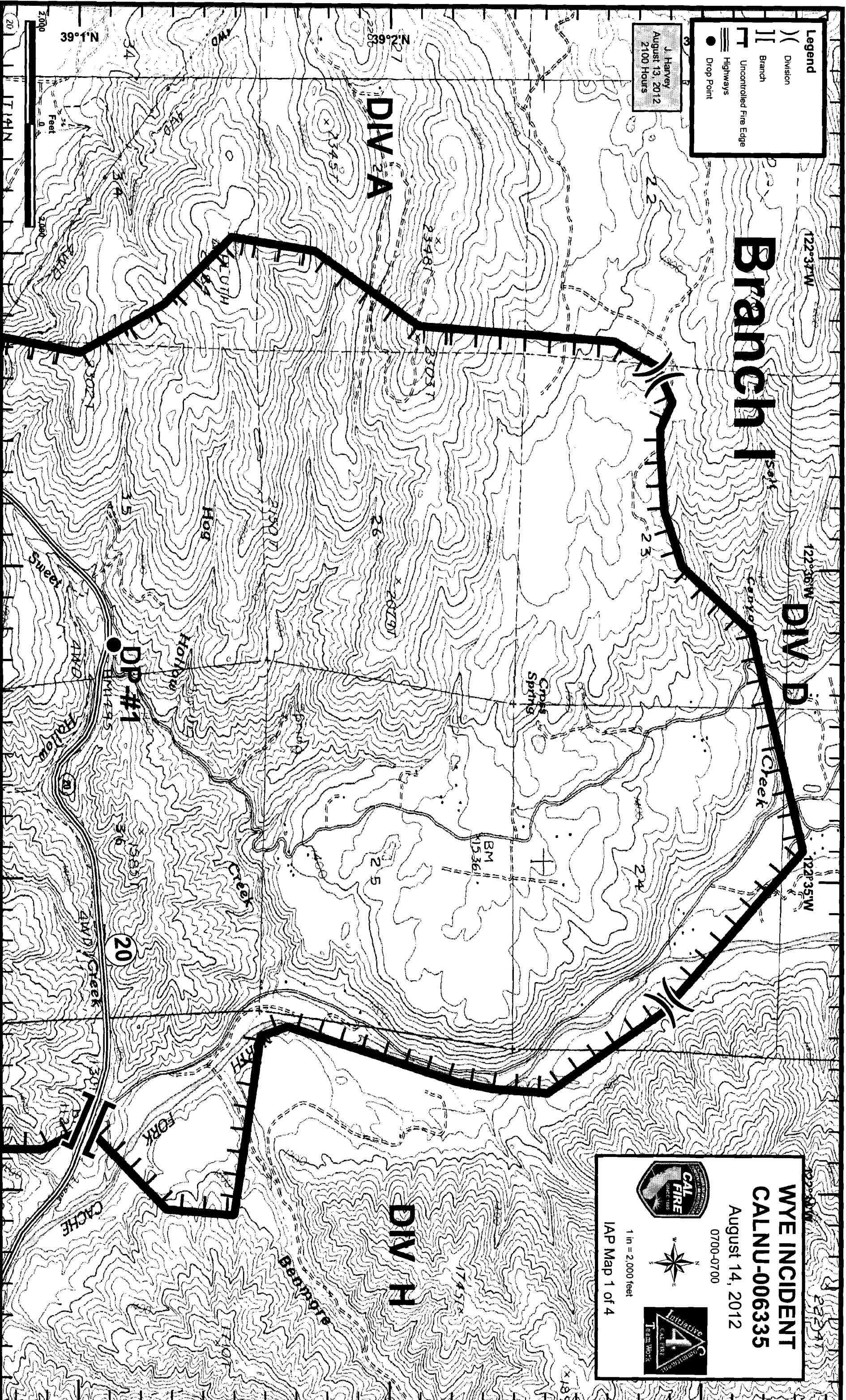
20

WYE INCIDENT
CALNU-006335
 August 14, 2012
 0700-0700





1 in = 2,000 feet
 IAP Map 1 of 4



Legend

- () Division
- || Branch
- Uncontrolled Fire Edge
- == Highways
- Drop Point

J. Harvey
August 13, 2012
2100 Hours



DIV M

Branch II

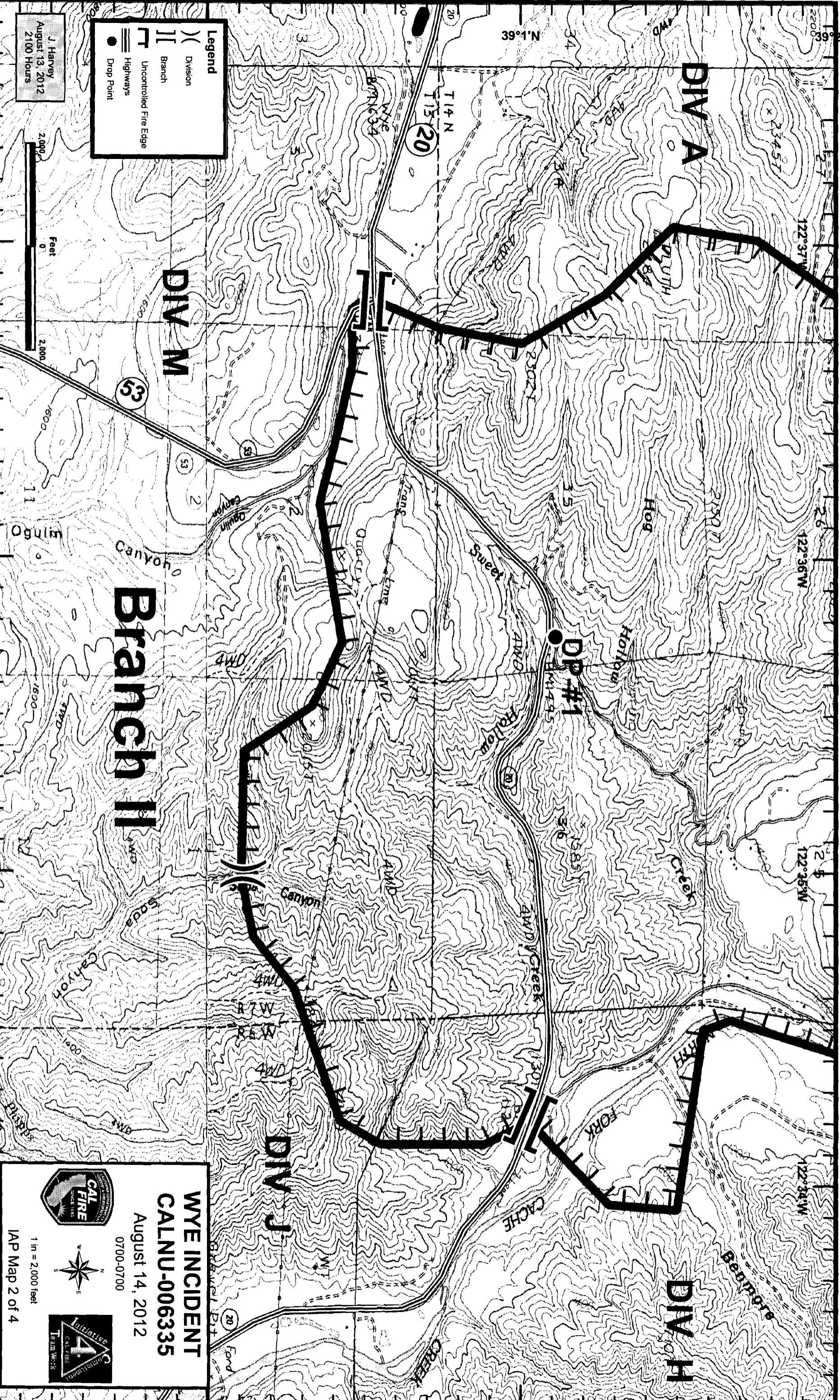
Branch III

DIV J

DIV A

DIV H

DP #1



WYE INCIDENT
CALNU-006335
August 14, 2012
0700-0700

1 in = 2,000 feet
IAP Map 2 of 4

WYE INCIDENT CALNU-006335

August 14, 2012

0700-0700



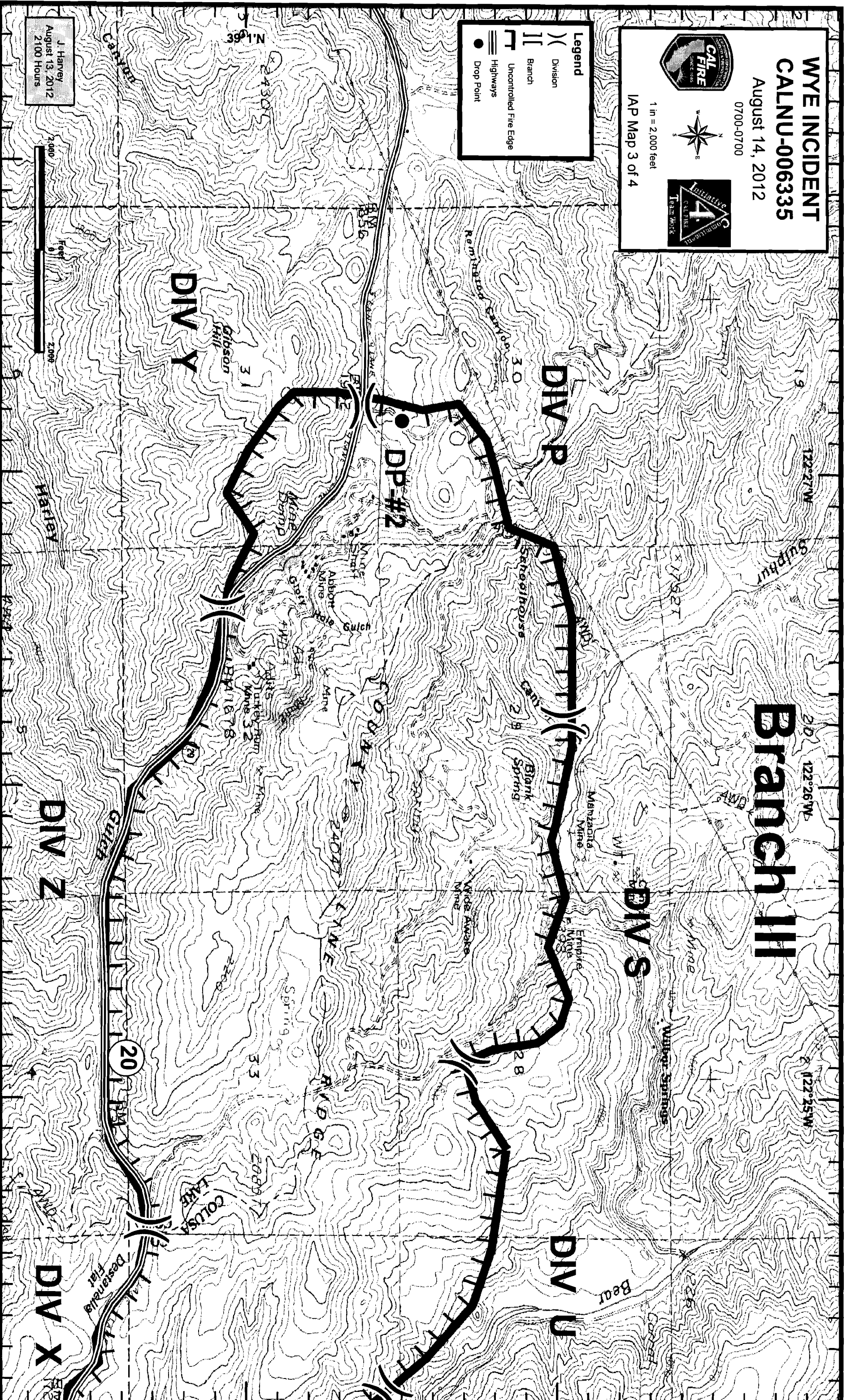
1 in = 2,000 feet

IAP Map 3 of 4

Legend

- Division
- Branch
- Uncontrolled Fire Edge
- Highways
- Drop Point

Branch III



J. Harvey
August 13, 2012
2100 Hours

DIV S

Wagon Springs

DIV U

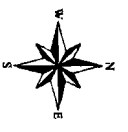
Branch III

DIV X

DIV Z



WYE INCIDENT
CALNU-006335
August 14, 2012
0700-0700



1 in = 2,000 feet



IAP Map 4 of 4

Legend

- Division
- Branch
- Uncontrolled Fire Edge
- Highways
- Drop Point



J. Harvey
August 13, 2012
2100 Hours

