



# SADDLE INCIDENT

CA-BTU-013655

OPERATIONAL PERIOD


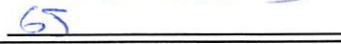
FRIDAY SEPTEMBER 9<sup>TH</sup> 0700

to


SATURDAY SEPTEMBER 10<sup>TH</sup> 0700



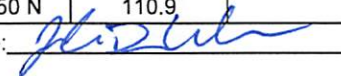
# INCIDENT OBJECTIVES (ICS 202)

<b>1. Incident Name:</b> Saddle CA-BTU-013655	<b>2. Operational Period</b> Date From: 9/9/2016 Date To: 9/10/2016 Time From: 0700 Time To: 0700																				
<b>3. Objective(s):</b> <u>Management Objectives</u> -Provide for and maintain public and emergency responder safety by utilizing the incident safety analysis process. -Provide for timely and accurate release of incident information to the public, media, first responders and cooperators. -Protect and defend structures and improvements in the fire area. -Protect natural and cultural reasources in the fire area. -Provide a process to manage emergency reasources efficiently. -Ensure costs are minimized appropriately for the values at risk. -Ensure coordination and communications with stakeholders and cooperating agencies.  <u>Control Objectives</u> -Keep the fire south of Wilderness Way. -Keep the fire east of Pentz Rd. -Keep the fire west of Highway 70. -Keep the fire north of Lime Saddle Road.																					
<b>General Situational Awareness:</b> - MAINTAIN L.C.E.S. AT ALL TIMES. Safety zones and escape routes are mandatory. - Ensure all personnel maintain situational awareness. - Rolling material and steep terrain. Rember to maintain good footing. - Keep your hydration up by drinking water and electrolyte beverages. Avoid energy drinks. - Maintain good communications with your supervisors, adjacent forces and crew members. - Guard against complacency.																					
<b>5. Site Safety Plan Required?</b> Yes ___ No <u>X</u> <b>Approved Site Safety Plan(s) Located at:</b>																					
<b>6. Incident Action Plan</b> <table style="width: 100%; border: none;"> <tr> <td>X ICS 203</td> <td>ICS 215A</td> <td>Phone List</td> <td>Fire Suppression Repair Plan</td> </tr> <tr> <td>X ICS 204</td> <td>X ICS 220</td> <td>X Training Message</td> <td>X Off Site Lodging Message</td> </tr> <tr> <td>X ICS 205</td> <td>X Travel Map</td> <td>X Base Map</td> <td>X Documentation Message</td> </tr> <tr> <td>X ICS 206</td> <td>X Weather Forecast</td> <td>X Demob Plan</td> <td>X ICS 214</td> </tr> <tr> <td>X Safety Message</td> <td>Fire Behavior</td> <td>Finance Message</td> <td>X CAL FIRE 101</td> </tr> </table>		X ICS 203	ICS 215A	Phone List	Fire Suppression Repair Plan	X ICS 204	X ICS 220	X Training Message	X Off Site Lodging Message	X ICS 205	X Travel Map	X Base Map	X Documentation Message	X ICS 206	X Weather Forecast	X Demob Plan	X ICS 214	X Safety Message	Fire Behavior	Finance Message	X CAL FIRE 101
X ICS 203	ICS 215A	Phone List	Fire Suppression Repair Plan																		
X ICS 204	X ICS 220	X Training Message	X Off Site Lodging Message																		
X ICS 205	X Travel Map	X Base Map	X Documentation Message																		
X ICS 206	X Weather Forecast	X Demob Plan	X ICS 214																		
X Safety Message	Fire Behavior	Finance Message	X CAL FIRE 101																		
<b>7. Prepared By:</b> Tim Person Position/Title: PSC Signature: 																					
<b>8. Approved by Incident Commander</b> Garrett Sjolund Signature: 																					
ICS 202 IAP Page ____	Date/Time: 9/8/2016 1900hrs																				

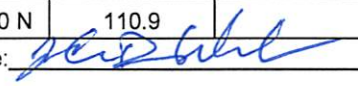
## ORGANIZATION ASSIGNMENT LIST (ICS 203)

<b>1. Incident Name:</b> Saddle CA-BTU-013655		<b>2. Operational Period: Date From:</b> 9/9/2016 Time From: 0700		<b>Date To:</b> 9/10/2016 <b>Time To:</b> 0700	
<b>3. Incident Commander(s) and Command Staff:</b>			<b>7. Operation Section:</b>		
IC/UC's	Garrett Sjolund	Chief	Bill Lopez		
Deputy		Deputy			
Safety Officer		Night Ops			
Information Officer	Mary Ann Aldrich	Staging Area			
Liaison Officer		<b>Branch</b>	<b>I</b>	<b>Director:</b>	
LE Liaison Officer		Division/Group	AX/Y	Ed Smith	
		Division/Group			
<b>4. Agency/Organization Representatives:</b>		Division/Group			
Paradise Police	Erick Reinbold	Division/Group			
CHP	Brian McGe	Division/Group			
Butte County Sheriff	Deric Bell	<b>Branch</b>	<b>II</b>	<b>Director:</b>	
PG&E	Rob Cone	Division/Group	H/M	Jason Finney	
CA State Parks		Division/Group			
NAVDAG		Division/Group			
CDCR	Tom Bainbridge	Division/Group			
Oroville CHP		Division/Group			
Town of Paradise		<b>Branch</b>		<b>Director:</b>	
Butte County EMS		Division/Group	Supp Repair	Dave Derby	
		Division/Group			
		Division/Group			
		Division/Group			
		Division/Group			
<b>5. Planning Section:</b>		<b>Branch</b>		<b>Director:</b>	
Chief	Tim Person	Division/Group			
Deputy		Division/Group			
Resource Unit	Jordan Weber				
Situation Unit		Staging Area			
Documentation Unit		Division/Group			
Demobilization Unit	Jordan Weber	<b>Branch</b>		<b>Director:</b>	
GISS		Division/Group			
FBAN		Division/Group			
IMET		Division/Group			
Training Specialist		<b>Air Operations Branch</b>		<b>Director:</b>	Shem Hawkins
Crew Tech	Timothy Williams	Air Attack Supervisor			
<b>6. Logistics Section</b>		Air Support Supervisor			
Chief	Jessie Morris	Helicopter Coordinator			
Deputy		Helibase Manager			
Supply Unit		<b>8. Finance/Administration Section:</b>			
Facilities Unit	Randy Ford	Chief	Vance Multan		
Ground Support Unit	Craig Sanderson	Deputy			
Hired Equipment Tech		Time Unit			
Communications Unit	Kyle Johnson	Procurement Unit			
Medical Unit		Comp/Claims Unit			
Food Unit		Cost Unit			
Hotel Tech Spech	Matt Aldrich				
<b>Prepared By: Name:</b>	Jordan Weber	RESL	Signature: 		
<b>ICS 203</b>	<b>IAP Page</b> _____	<b>Date/Time:</b>	9/8/2016 1900 hours		

## ASSIGNMENT LIST (ICS 204)

<b>1. Incident Name:</b> Saddle CA-BTU-013655		<b>2. Operational Period:</b> Date From: 09/09/16      Date To: 09/10/16 Time From: 0700              Time To: 0700				<b>3.</b> Branch: <b>I</b> Division/Group: <b>A/X/Y</b> Staging Area:		
<b>4. Operations Personnel:</b> Operations Section Chief: <b>Bill Lopez</b> Branch Director: Division/Group Supervisor: <b>Ed Smith</b>								
<b>5. Resources Assigned:</b>		Resource Identifier	Leader	Number of Personnel	Contact	Reporting Location, Special Equipment, Remarks, Notes, and Information		
STC TGU 9250C			Puckett, Erick	19		DP 10		
STC BTU 9211C *			Tapia, Joe	19		DP 10		
STC BTU 9212C*			Logan, Andrew	19		DP 10		
STG TGU 9253G				14		DP 10		
STG LNU 9143G*				33		DP 10		
CRW TGU SCK 1*				14		DP 10		
CRW TGU SCK 2*				14		DP 10		
W/T BUT 64 *				1		DP 10		
W/T PVT E-101*				1		DP 10		
<b>6. Work Assignments:</b> Hold existing control lines. Patrol and mop-up 500' interior. Back haul all unnecessary equipment and trash to drop points. Pull hose lays as appropriate and back haul to drop point.								
<b>7. Special Instructions:</b> * Indicates 12 hour resources								
<b>8. Communications</b> (radio and/or phone contact numbers needed for this assignment):								
Name	Ch	Function	Rx Freq	Rx Tone	Tx Freq	Tx Tone	Notes	
CDF C7 T2	1	Command	151.4600 N	103.5	159.3900 N	123.0		
VFIRE 24	3	TACTICAL	154.2725 N	156.7	154.2725 N	156.7		
CALCORD	15	EMS	156.0750	156.7	156.0750	156.7		
CDF A/G T18	14	Air to Ground	159.3450 N	192.8	159.3450 N	192.8		
Air Guard	16	EMERGENCY	168.6250 N		168.6250 N	110.9		
<b>9. Prepared by: Name:</b> Jordan Weber		Pos/Title: RESL		Signature: 				
<b>ICS 204</b>		Date/Time: 9/8/2016		1900 hours				

## ASSIGNMENT LIST (ICS 204)

<b>1. Incident Name:</b> Saddle CA-BTU-013655		<b>2. Operational Period:</b> Date From: 09/09/16      Date To: 09/10/16 Time From: 0700      Time To: 0700				<b>3.</b> Branch: <b>II</b> Division/Group: <b>H/M</b> Staging Area:	
<b>4. Operations Personnel:</b> Operations Section Chief: <b>Bill Lopez</b> Branch Director: Division/Group Supervisor: <b>Jason Finney</b>							
<b>5. Resources Assigned:</b>		Number of Personnel		Contact (phone radio freq, etc.)			
Resource Identifier		Leader					
STC NEU 9230C				16		DP 20	
STG HUU 9127G				33		DP 20	
STG NEU 9231G*				33		DP 20	
STG CZU 9174G*				33		DP 20	
PVT DOZ E-121 BUT 1*				1		DP 20	
W/T BUT E-25*				1		DP 20	
HEQB*		Hale, Jordan		1		DP 20	
<b>6. Work Assignments:</b> Hold existing control lines. Patrol and mop-up 500' interior. Back haul all unnecessary equipment and trash to drop points. Pull hose lays as appropriate and back haul to drop point.							
<b>7. Special Instructions:</b> * Indicates 12 hour resources							
<b>8. Communications</b> (radio and/or phone contact numbers needed for this assignment):							
Name	Ch	Function	Rx Freq	Rx Tone	Tx Freq	Tx Tone	Notes
CDF C7 T2	1	Command	151.4600 N	103.5	159.3900 N	123.0	
VFIRE 25	4	TACTICAL	154.2875 N	156.7	154.2875 N	156.7	
CALCORD	15	EMS	156.0750	156.7	156.0750	156.7	
CDF A/G T18	14	Air to Ground	159.3450 N	192.8	159.3450 N	192.8	
Air Guard	16	EMERGENCY	168.6250 N		168.6250 N	110.9	
<b>9. Prepared by: Name:</b>		Jordan Weber		<b>Pos/Title:</b> RESL		<b>Signature:</b> 	
<b>ICS 204</b>				<b>Date/Time:</b> 9/8/2016 1900 hours			

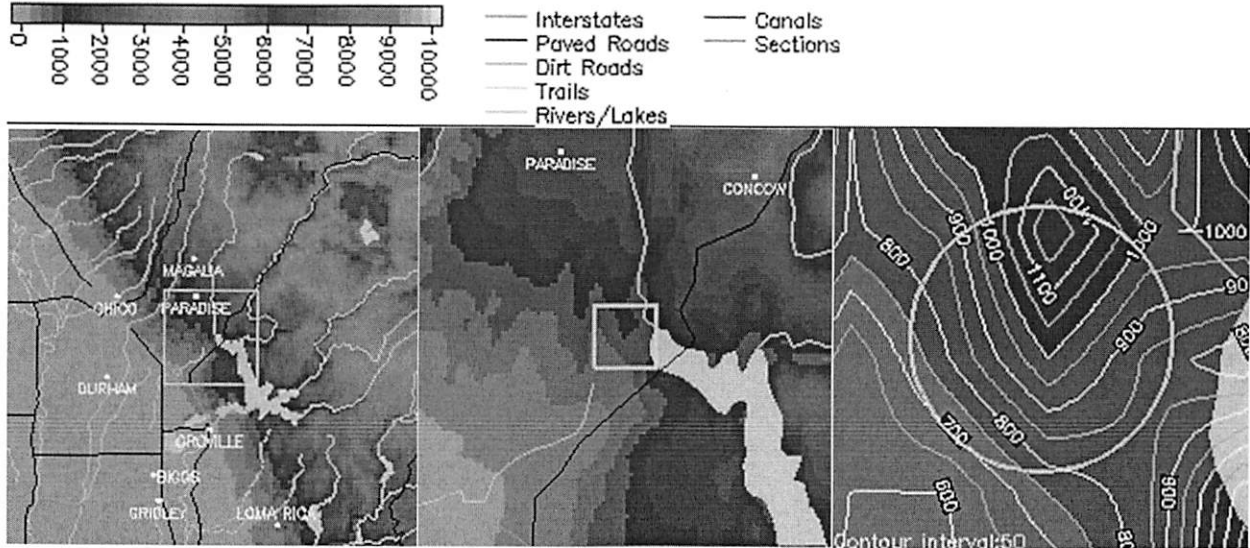
## ASSIGNMENT LIST (ICS 204)

<b>1. Incident Name:</b> Saddle CA-BTU-013655		<b>2. Operational Period:</b> Date From: 09/09/16    Date To: 09/10/16 Time From: 0700    Time To: 0700				<b>3.</b> Branch:  Division/Group: <b>Supp Repair</b>  Staging Area:	
<b>4. Operations Personnel:</b> Operations Section Chief: <b>Bill Lopez</b> Branch Director: Division/Group Supervisor: <b>Dave Derby</b>							
<b>5. Resources Assigned:</b>				Reporting Location, Special Equipment, Remarks, Notes, and Information			
Resource Identifier	Leader	Number of Personnel	Contact (phone, radio freq, etc.)				
DOZ PVT E-131		1		ICP			
DOZ PVT E-132		1		ICP			
W/T PVT E-44		1		ICP			
W/T PVT E-82		1		ICP			
CHIP PVT E-128		1		ICP			
EXC		1		ICP			
EXC		1		ICP			
RESP	Feller, Pete	1		ICP			
HEQB	Keelhorn, Eric	1		ICP			
<b>6. Work Assignments:</b> Preform supression repair as appropriate Back haul all unnecessary equipment and trash to drop points							
<b>7. Special Instructions:</b> All resources 12 hour resources							
<b>8. Communications</b> (radio and/or phone contact numbers needed for this assignment):							
Name	Ch	Function	Rx Freq	Rx Tone	Tx Freq	Tx Tone	Notes
CDF C7 T2	1	Command	151.4600 N	103.5	159.3900 N	123.0	
CDF T31	6	TACTICAL	159.3825 N	192.8	159.3825 N	192.8	
CALCORD	15	EMS	156.0750	156.7	156.0750	156.7	
CDF A/G T18	14	Air to Ground	159.3450 N	192.8	159.3450 N	192.8	
Air Guard	16	EMERGENCY	168.6250 N		168.6250 N	110.9	
<b>9. Prepared by: Name:</b> Jordan Weber		Pos/Title: RESL		Signature:			
<b>ICS 204</b>		Date/Time: 9/8/2016 1900 hours					

# SADDLE (WILDFIRE) (Requested: 1746 PDT 9/8/16)

Forecast complete at 1739 PDT 9/8/16

Requested by: CAL FIRE Phone:(530) 538-6840 FAX:(530) 538-7401 Contact:JOSHUA BAKER



**Location:** Legal: Lat/Lon:39 40 35/121 34 02 Quad:  
 Calculated:( 39.67639°N 121.56722°W)(CHEROKEE CA)

Elevation:947-1600 Drainage:WEST BRANCH OF FEATHER RIVER Aspect:SOUTH Size:700  
 Fuel Type:BRUSH (Fully Sheltered)

## Observations:

Place	Elev	Time	Wind	Temp	Wetbulb	RH	Dewpt	Remarks
Concow	1405	1630	3-6 W/NW	94	66	21		Clear
Calculated:								23 51

## Requested Parameters

## Remarks

XXX Sky / Weather	This is a new spot weather
XXX Temperature	forecast for the next operational
XXX Relative Humidity	period on the saddle fire. Would
XXX 20-ft Wind	like to include tonight's
XXX Ridge Top Wind	predicted winds and forecast for
... Chance of Wetting Rain	tomorrow. If we could have this by
... Lightning Activity Level	6:00 PM. Thank you..
... Smoke Dispersion	

## FORECAST:

IF CONDITIONS BECOME UNREPRESENTATIVE,  
 CONTACT THE NATIONAL WEATHER SERVICE.  
 SPOT FORECAST FOR SADDLE...CAL FIRE  
 NATIONAL WEATHER SERVICE SACRAMENTO CA

539 PM PDT THU SEP 8 2016

FORECAST IS BASED ON REQUEST TIME OF 1702 PDT ON SEPTEMBER 08.  
IF CONDITIONS BECOME UNREPRESENTATIVE...CONTACT THE NATIONAL WEATHER  
SERVICE.

.DISCUSSION...

LITTLE CHANGE IN WEATHER CONDITIONS THE NEXT COUPLE OF DAYS WITH  
GENERALLY LIGHT UPSLOPE WINDS DURING THE DAY AND DOWNSLOPE WINDS  
AT NIGHT. TEMPERATURES WILL REMAIN WARM DURING THE DAY WITH  
MODERATE HUMIDITY RECOVERY AT NIGHT. THE NEXT WEATHER CHANGE WILL  
BE INCREASED SOUTHWEST WINDS POSSIBLE SUNDAY.

.TONIGHT...

SKY/WEATHER.....CLEAR.  
MIN TEMPERATURE.....61-66.  
MAX HUMIDITY.....59-64 PERCENT.  
WIND (20 FT).....WEST 5 TO 10 BECOMING EAST 5 TO 10 MPH AFTER  
MIDNIGHT.  
RIDGETOP WIND.....EAST WINDS 5 TO 10 MPH.  
MIXING HEIGHT.....5400 FT AGL DECREASING TO 200-1100 FT AGL EARLY  
IN THE EVENING.  
TRANSPORT WINDS.....EAST 5 MPH.

.FRIDAY...

SKY/WEATHER.....SUNNY.  
MAX TEMPERATURE.....96-101.  
MIN HUMIDITY.....17-22 PERCENT.  
WIND (20 FT).....EAST WINDS 4 TO 7 MPH SHIFTING TO THE WEST  
5 TO 10 MPH IN THE AFTERNOON.  
RIDGETOP WIND.....WEST 5 TO 10 MPH.  
MIXING HEIGHT.....200 FT AGL INCREASING TO 4000-4500 FT AGL.  
TRANSPORT WINDS.....WEST 5 MPH.



Butte Unit

# Safety Message

## Saddle Fire

CA-BTU-013655 09/09/2016  
0700-0700



## HYDRATION

Sweating is the body's cooling mechanism. Maintaining body fluids is essential for sweating:

- Hydrate before work to prepare for the heat.
- Up to one quart of fluid per hour or more may be necessary..
- At least one third of the liquid consumed during a work shift should be a sports drink, such as Gatorade, for the purpose of replenishing fluids, electrolytes, and carbohydrates.
- "Energy drinks" like Red Bull, Monster, etc. are NOT sports drinks.
- Drink as much as you can during your mid-day meal break. Adequate water is your essential when working in the heat.
- Continue drinking fluids after work to replace your daily loss.
- Arrange your food intake around multiple smaller meals for higher energy and more optimal metabolism. Keep granola & energy bars handy in your fire line gear.
- Assess hydration by observing the volume, color and concentration of your urine. Low volumes of dark, concentrated urine, or painful urination indicate a SERIOUS need for rehydration.
- Other signs of dehydration include a rapid heart rate, weakness, excessive fatigue and dizziness.
- Monitor your crews for signs & symptoms of dehydration.
- If you are feeling overexerted – STOP! Hydrate and try to lower your heart rate. Feeling "thirsty" means that you are already dehydrated.

**Supervisors, safety brief your personnel before starting your shift & document on your 214!**

Prepared By: Lou Sciocchetti, Safety Officer *Lou Sciocchetti*

Approved by: Garrett Sjolund, Incident Commander *Garrett Sjolund*

Lookouts

Communications

Escape Routes

Safety Zones

**AIR OPERATIONS SUMMARY** OPERATIONAL PERIOD DATE: 09/9/16 START: 0830 END: 1856 SUNRISE: 0642 SUNSET: 1926

<b>1. INCIDENT NAME:</b> Saddle	<b>2. PREPARED BY:</b> SHEM HAWKINS	<b>PREPARED DATE/TIME:</b> 09/08/2016 2100	<b>3. # OF COPIES NEEDED:</b>
<b>4. REMARKS (Safety Notes, Hazards, Air Operations Special Equipment, etc.):</b> Ensure your load calcs reflect the increased temperatures. GPS settings: hddd°mm.mmm' with WGS 84 selected as the map datum.  6GH will be available from Butte Fire Center. Order through the ecc/communications to have it respond to the incident.			<b>5. TFR:</b> Center: None  Radius: None  Altitude: None

6. PERSONNEL		7. FREQUENCIES		8. FIXED WING	
	Phone		AM	FM	# Avail / Type/ Make-Model / FAA N# / Base(s)
<b>AOBD:</b>		<b>AIR/AIR FW:</b>		169.2000	<b>AIRTANKERS</b>
<b>ASGS: Shem Hawkins</b>	650-245-1715	<b>AIR/AIR RW:</b>	123.1750		<b>LEADPLANES</b>
		<b>AIR BRIEFING</b>			<b>AIR TACTICAL PLATFORMS</b>
		<b>AIR/GROUND COMMAND</b>	Tx 159.3900 T 103.5 Rx 151.4600		Available upon request
<b>ATGS: Matt Davis</b>	530-895-6505	<b>AIR/GROUND TACTICAL</b>	CDF T18 Tx/Rx 159.3450 T192.8		<b>TFR Freqs.</b>
<b>CWN MNGR 6GH: Pete York</b>	530-386-2147				123.1750
		<b>DECK:</b>	163.100		<b>PILOT MAP:</b>
		<b>TOLC:</b>	123.0250		
		<b>COMMAND:</b>	See IAP Communications Plan		
		<b>Air Guard</b>	168.625 Tone 1		
<b>Dispatch Aircraft Desk</b>					

**9. HELICOPTERS (Use Additional Sheets as Necessary)**

FAA N#	TY	MAKE/MODEL	BASE	AVAIL	START	REMARKS	FAA N#	TY	MAKE/MODEL	BASE	AVAIL	START	REMARKS
C902	2	UH1H	Chico	0815	0830	Hoist / Bucket							
6GH	2	205A1++	BFC	0815	0830	Bucket / Recon							

**10. TASK/MISSION/ASSIGNMENT (Use ICS-220a if additional space needed; Type/Function includes: Air Tactical, Retardant, Recon, Personnel Transport, Water Dropping, etc.)**

TYPE/FUNCTION	NAME OF PERSONNEL OR CARGO (if applicable) OR INSTRUCTIONS FOR TACTICAL AIRCRAFT	MISSION START	FLY FROM	FLY TO
Recon				
Water Drops/Retard.				
Personnel Transport				
Logistics				
Priorities				

INCIDENT RADIO COMMUNICATIONS PLAN			Incident Name <b>SADDLE</b>			Date/Time Prepared 9/8/2016 15:00:00 PM		Operational Period Date/Time 9/9/2016 0700-0700		
Ch #	Function	Channel Name/Trunked Radio System Talkgroup	Assignment	RX Freq N or W	RX Tone/NAC	TX Freq N or W	Tx Tone/NAC	Mode A, D or M	Remarks	
1	COMMAND	CDF C7 T2	ALL DIVISIONS	151.4600 N	103.5	159.3900 N	123.0	A	BK GROUP 16 CH 7 (T2)	
2										
3	TACTICAL	VFIRE 24	DIVISION A/X/Y	154.2725 N	156.7	154.2725 N	156.7	A	BK GROUP 24 CH 20	
4	TACTICAL	VFIRE 25	DIVISION H/M	154.2875 N	156.7	154.2875 N	156.7	A	BK GROUP 25 CH 01	
5										
6	TACTICAL	CDF T31	SUP/REPAIR	159.3825 N	192.8	159.3825 N	192.8	A	BK GROUP 20 CH 18	
7										
8										
9										
10										
11										
12										
13										
14	AIR TO GRD	CDF A/G T18	ALL DIVISIONS	159.3450 N	192.8	159.3450 N	192.8	A	BK GROUP 20 CH 05	
15	EMS	CALCORD	ALL DIVISIONS	156.0750 N	156.7	156.0750 N	156.7	A	BK GROUP 24 CH 11	
16	EMERGENCY	GUARD	EMERGENCY	168.6250 N		168.6250 N	110.9	A	EMERGENCY USE ONLY	
17										
18										
19										
20	EMERGENCY	GUARD	EMERGENCY	168.6250 N		168.6250 N	110.9	A	EMERGENCY USE ONLY	
Prepared By (Communications Unit) Kyle Johnson <i>Kyle R Johnson</i>					Incident Location OROVILLE County BUTTE State CA Latitude Longitude					

The convention calls for frequency lists to show four digits after the decimal place, followed by either an "N" or a "W", depending on whether the frequency is narrow or wide band. Mode refers to either "A" or "D" indicating analog or digital (e.g. Project 25) or "M" indicating mixed mode. All channels are shown as if programmed in a control station, mobile or portable radio. Repeater and base stations must be programmed with the Rx and Tx reversed.

## MEDICAL PLAN (ICS 206)

<b>1. Incident Name:</b> Saddle CA-BTU-013655	<b>2. Operational Period:</b> 0700-0700	Date From: 9/9/16 Time From: 0700	Date To: 9/10/16 Time To: 0700
--	--	--------------------------------------	-----------------------------------

3. Medical Aid Stations:			
Name	Location	Contact Number/Freq	Paramedics Yes / No
			Yes / No
			Yes / No

4. Transportation (indicate air or ground):			
Ambulance Service	Location	Contact Number	Level of Service
Butte EMS	Paradise	530-538-6460	X ALS / <input type="checkbox"/> BLS
Enloe Flight Care	Chico	530-538-6460	X ALS / <input type="checkbox"/> BLS
			<input type="checkbox"/> ALS / <input type="checkbox"/> BLS
			<input type="checkbox"/> ALS / <input type="checkbox"/> BLS

5. Hospitals:							
Hospital Name	Address, Lat & Long Helipad	Contact Number(s)/ Frequency	Travel Time		Trauma Center	Burn Center	Helipad
			Air	Ground			
Enloe Medical Center	1531 Esplanade, Chico	530-332-7300	5	30	Level: 2	<input type="checkbox"/> Yes x No	x Yes <input type="checkbox"/> No
Feather River Hospital	5974 Pentz Rd, Paradise	530-872-3378	5	30	Level: 3	<input type="checkbox"/> Yes x No	x Yes <input type="checkbox"/> No
UCD Med Center	2315 Stockton Blvd. Sacramento	916-734-2011	20	2	Level 1	x Yes <input type="checkbox"/> No	x Yes <input type="checkbox"/> No
					<input type="checkbox"/> Yes Level: ___	<input type="checkbox"/> Yes <input type="checkbox"/> No	<input type="checkbox"/> Yes <input type="checkbox"/> No
					<input type="checkbox"/> Yes Level: ___	<input type="checkbox"/> Yes <input type="checkbox"/> No	<input type="checkbox"/> Yes <input type="checkbox"/> No

### 6. Special Medical Emergency Procedures

<p><b>Line Emergency</b> Crew Supervisor will contact Division Supervisor with patient complaint/condition and location.</p> <p>- Division Group Supervisor Contacts:</p> <ol style="list-style-type: none"> <li>1. Closest EMS resource</li> <li>2. Communications Unit</li> </ol> <p>- Communications Unit Contacts:</p> <ol style="list-style-type: none"> <li>1. Ground or Air ambulance as requested.</li> <li>2. Operations</li> <li>3. Safety</li> <li>4. Medical Unit</li> </ol> <p>- Division Supervisor or designee will serve as point of contact and run medical emergency on assigned channel.</p> <ol style="list-style-type: none"> <li>1. A pre-assigned tactical frequency (i.e. CALCORD) should be used for IWL and only for duration of the emergency.</li> </ol> <p>- Communications Unit will clear the Command channel for emergency traffic as needed for duration of the need.</p> <p><b>Camp Emergency</b> Contact Medical Unit with patient complaint/condition and location. Medical staff will respond to stabilize the patient.</p> <p>- Medical Unit contacts</p> <ol style="list-style-type: none"> <li>1. Communications</li> <li>2. Safety</li> <li>3. Logistics</li> <li>4. Operations</li> <li>5. Crew Supervisor</li> <li>6. Comp/Claims</li> </ol>	<p><b>Injury Reporting Procedures</b></p> <p>Nature of Injury: _____</p> <p>Location of Patient: _____</p> <p>Point of Contact: _____</p> <p>Transportation Requested by: Air _____ Ground _____</p> <p>Point of Pick-Up: _____</p> <p>Lat: _____ Long: _____</p> <p>Patient Unit ID: _____</p> <p>Is an EMT with Patient: Yes _____ No _____</p> <p>Age: _____ Sex: Male _____ Female _____</p> <p><b>All Emergencies - Secure the area and identified witnesses for later investigation. Keep accurate log of events.</b></p>
---	---

Check box if aviation assets are utilized for rescue. If assets are used, coordinate with Air Operations.

7. Prepared by (Medical Unit Leader): Name: Jorden Weber	Signature:
--	------------

8. Approved by (Safety Officer): Name: Tim Person	Signature:
---	------------

ICS 206	IAP Page _____	Date/Time: 9/7/16	2100
---------	----------------	-------------------	------

# DEMOB

## SADDLE INCIDENT

CA – BTU – 013655

- Resources must Check-In prior to the Demob process.
- In order to be deemed excess, supervisors must submit an ICS #213 to the Resources Unit.
- Resources report to Demob at the times posted on the tentative Demob list, which is posted around the Incident Base.
- Prior to reporting to Demob, Please return all supplies and equipment.
- Resources will get signatures from the following units:
  - Motels
  - Supply
  - Ground Support
  - Documentation
  - Time
  - Demob

## EMERGENCY FIRE SUPPRESSION REPAIR PLAN - SADDLE INCIDENT

**Fire Suppression Repair** is the repair of damage caused directly from fire suppression activities. It is not the repair of infrastructure or rehabilitation of burned areas caused by the fire. We cannot upgrade facilities beyond their pre-fire condition. Fire suppression repair shall be applied to mitigate infrastructure damage and natural resource damage.

**Infrastructure Damage:** Culverts and other watercourse crossings, water sources, trails, road barriers removed for fire access, trash, debris and supplies left by fire suppression activities; miscellaneous.

**Natural Resource Damage:** Repair of existing problems caused by fire suppression activities (direct effect) to natural resources and to prevent likely future problems such as accelerated erosion caused by rains (indirect effect). The goal is to minimize soil erosion, adverse impacts to water quality, and adverse impacts to protected species of plants and animals

### REPAIR GUIDELINES

**General:** Restore berms and barriers removed for fire control access.

**Drop Points/Staging Areas/Safety Zones:** New construction - cross drain and abandon (if applicable). Existing - repair to original condition, remove debris resulting from use. Pick up all trash.

**Roads:** Reshape soil surfaced roads that were used during fire control operations. Roads should be out-sloped with rolling dips where degradation of the road prism has resulted from fire control operations. Clean out culvert inlets and outlets as needed. Report any damaged culverts to the Fire Suppression Repair Specialist for specific repair guidance. Breach berms, where appropriate, to facilitate drainage. Water and wheel-pack any roads that have had the running surface destabilized by fire suppression activities.

**Firelines:** Break apart dozer piles of pushed over trees, vegetation and soil, and spread along tractor roads, tractor fire breaks, or any other areas disturbed during fire suppression activities. Lop and scatter displaced vegetation to a height of less than 30 inches or chip within 100' of a gravel road or structure. Scatter the lopped material along the fire line. Pull back any excess soil material sidecast along roads or tractor disturbed areas that are located within 100 feet of any watercourse or spring. Install waterbreaks on all constructed or used dozer lines using the following criteria:

Fireline and road gradient (%):	0-30	31-50	>50
Fireline waterbreak spacing:	100'	75'	50'
Road waterbreak spacing:	150'	100'	75'

Waterbreaks and/or rolling dips shall be used to reduce the volume and velocity of water by directing it off of fire lines as soon as possible at controlled locations. The outfall end of all waterbreaks shall be opened up by hand if necessary. Waterbreaks should be located to discharge into natural vegetation. Waterbreaks should cross the fire line at an angle of approximately 45 degrees.

**Waterbreak installation on roads will be conducted in consultation with landowners. Lands administered by the Department of Parks and Recreation will not receive waterbreaks without specific approval from their representative.**

**Handlines:** All waterbreaks shall be installed diagonally with a minimum cut of 4" into existing grade, and minimum height of 8". Waterbreaks shall be constructed to allow for drainage at the discharge end into non-erodible material.

Fireline and road gradient (%):	0-30	31-50	>50
Handline waterbreak spacing:	75'	50'	25'

**Slash Piles:** Piles within 100' of permanent structures or public or un-gated private roads will be lopped and/or scattered within 30" of the soil surface or chipped. Scatter smaller debris where applicable.

**Watercourse Crossings:** All slash, soil, and debris deposited into watercourses resulting from fire suppression activities shall be removed and stabilized above the high water line. Where fire lines are constructed within 100' of flowing watercourses, slash mulching will be applied. All loose soil must be pulled away from the watercourse and stabilized.

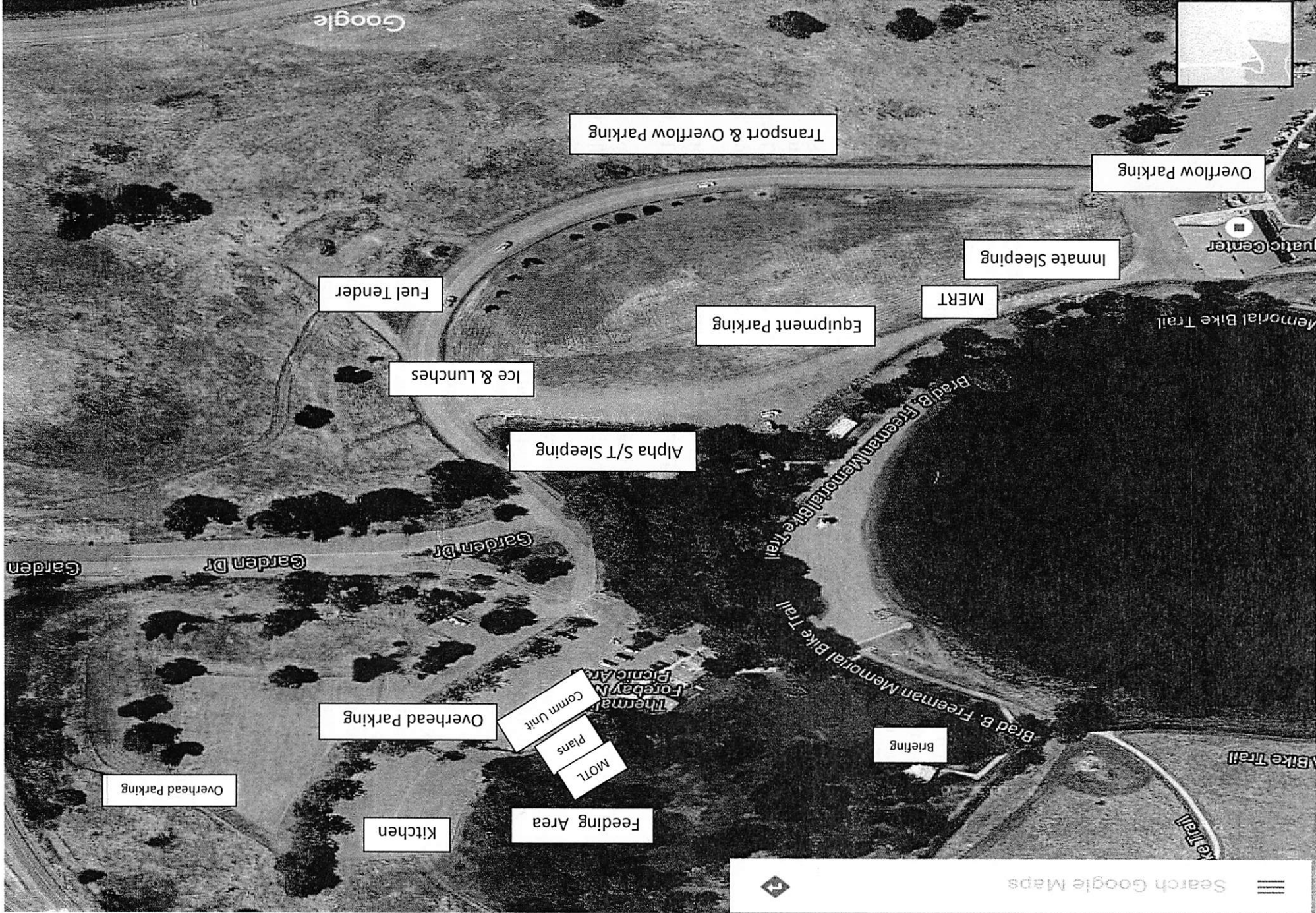
**Archaeological or Historic Sites:** All potential sites shall be avoided. Contact Rehabilitation Specialist.

**Other Repair Concerns:** Remove all trash from the fire lines and other affected areas.

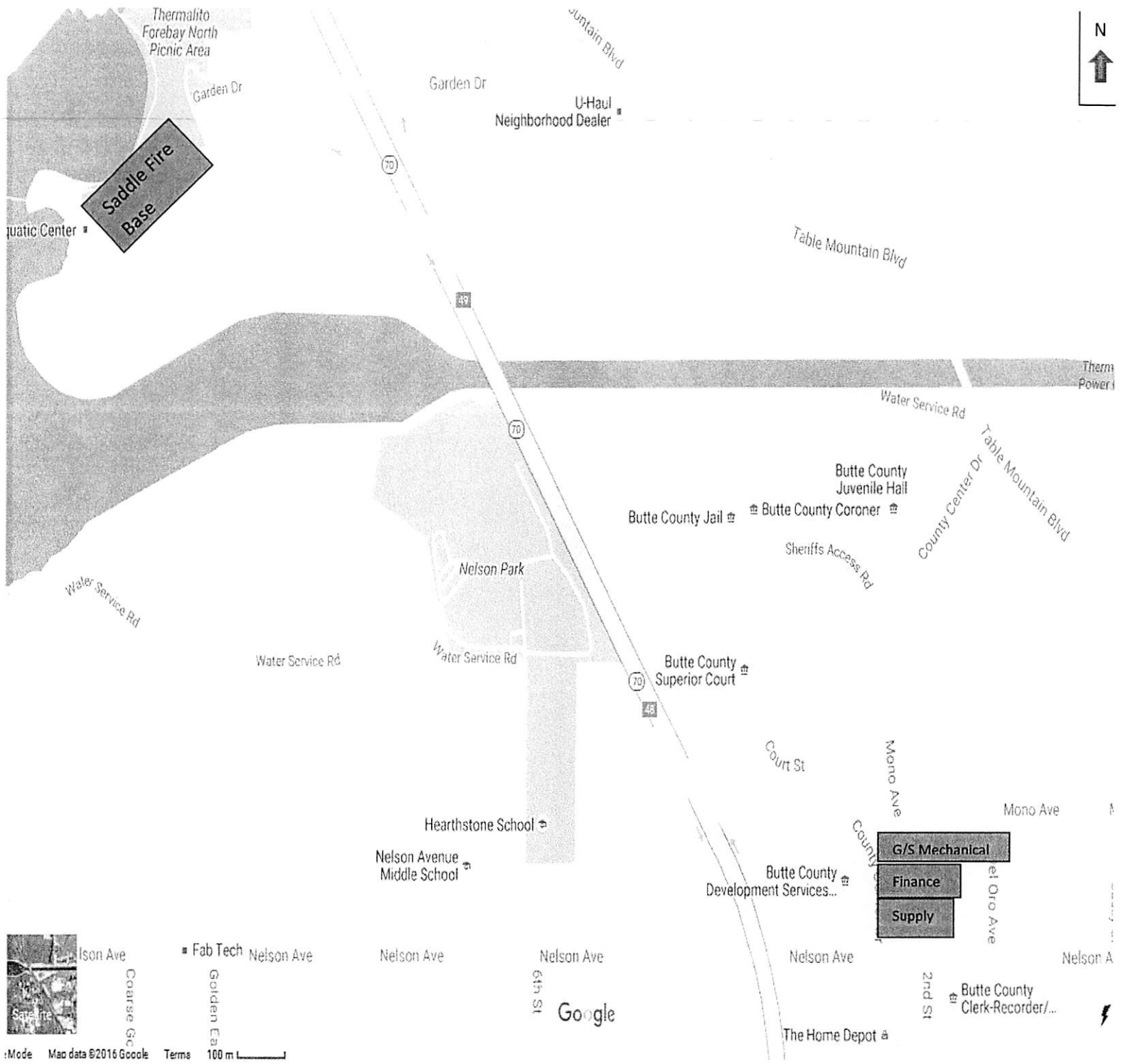
## **Archaeological and Historical Sites Fireline Guidance for the Saddle Incident**


**Do not compromise safety for the protection and preservation of archaeological and historical sites. When feasible and prudent:**

1. Be on the lookout for prehistoric and historic sites. Prehistoric archaeological sites include temporary camps containing scatters of obsidian and/or chert flakes that often look like broken glass. More permanent village sites containing circular depressions (house pits), artifact scatters, and dark brown-black soils (midden). These typically occur on flats near sources of water, along ridgetops and saddles, and other such places suitable for camping. Historic sites include old wooden buildings, structures and corrals, rock foundations, wells, and debris scatters. These kinds of resources can be found in the same kinds of environmental settings as prehistoric camp sites.
2. No archaeological or historical sites have yet been flagged. If you observe artifacts, features, or sites, attempt to avoid dozing or driving through and/or parking on these sites, if feasible, especially with heavy equipment.
3. If you can't avoid sites, minimize disturbance as much as feasible, only clearing the surface to as minimal a depth and width as necessary.
4. Leave all artifacts in place. Some artifacts may have been intentionally placed for religious or ceremonial reasons.
5. When a site is discovered, flag it for visibility and report its location to the Division Supervisor. If feasible, note locations of discovered resources on a map. Better yet, take a GPS reading. Leave information with the Plans Section so that the sites can be relocated and protected during both the suppression and fire suppression repair phases of the Incident.
6. If you encounter a burial or other human remains, cease work in that area immediately and contact the CAL FIRE Archaeologist. State law requires that CAL FIRE then contact the County Coroner, who will then determine if the remains are part of a crime scene. If the Coroner determines that the remains are Native American, State law requires the Coroner to contact the Native American Heritage Commission in Sacramento.








 Save fire  
 Ison Ave  
 Course Gc  
 Fab Tech Nelson Ave  
 Golden Ea  
 Google  
 64th St  
 Nelson Ave  
 Nelson Ave  
 Nelson Ave  
 Nelson Ave  
 The Home Depot  
 2nd St  
 Butte County Clerk-Recorder/...  
 100 m

**This page intentionally left blank.**



**This page intentionally left blank.**

# CAL FIRE

## INCIDENT MANAGEMENT TEAM

### WATER USAGE PLAN

#### *California Drought Emergency*

The following shall be considered and implemented by all fire resources as a means to provide maximum efficiencies when utilizing water resources, while minimizing the impacts to private and public water supplies. Accountability shall be maintained for all water supplies that are utilized and care should be applied to ensure proper replacement and/or reimbursement to the supplier/ owner.

#### **Fireline personnel-** (During mop up operations)

- Use of Pencil Hose and Garden Nozzles with Shut-Offs.
- Use of Back pumps.
- Dry Mop-up and consolidation of heavy fuels to areas where they can burn out safely
- Locate/ Relocate Firelines to lighter fuels or natural barriers when safe.
- Set up and use portable tanks in anticipation of longer transport times for Water Tenders.
- Use of foams, gels and other water enhancers.
- Evaluate need to mop up in excess of 200 feet from fireline

#### **Road Maintenance and Repair-**

- Monitor and water roads only when and where needed.
- Water when most effective (evening and nights).
- Use chemical treatments when available (Magchloride, Omni bind etc).
- Consider use of tertiary or treated water (sp)

#### **Aviation Operations-**

- Use of Gels, Foams and Retardants. Set up portable plants.
- Consider Blivits and Pencil hose for interior mop up operations as opposed to numerous bucket drops.
- Establish and use pre-use agreements for existing and known water sources.
- Use large watershed dip sites when able. Minimize use of small, static ponds and lakes.
- Maintain accountability of water used and locations of dip sites.
- Evaluate need for interior bucket drops

#### **Private Water Supplies-**

- Notify property owner as early as possible.
- Minimize usage and develop alternative water supplies when and where appropriate.
- Track usage (meter, 214 form) and develop a plan to replace water.
- Make arrangements for reimbursement and damage claims if needed.

#### **Public/ Municipal Water Supplies-**

- Notify Agency as soon as possible and request a representative to the incident.
- Identify fill areas and request metering devices. Place on incident map.
- Use alternative or reclaimed water sources when available. Place on incident map.
- Make arrangements for reimbursement and damage claims if needed.

#### **Management and Supervision-**

- Use leaders intent and consider establishing Water Conservation as a Management Objective.
- Consider complexity of water use on incidents. Consider establishing a Water Supply Group Supervisor to coordinate additional resources to support the incident needs.
- Complete the Water Usage Report daily and turn in to Finance
- Review this check list and brief daily.

# CAL FIRE

## INCIDENT MANAGEMENT TEAM

### WATER USAGE LOG

DATE: \_\_\_\_\_

Division / Group: \_\_\_\_\_

AGENCY ID / VENDOR: \_\_\_\_\_

I.e., Strike Team 1110C, Acme Water Tenders

REQUEST # \_\_\_\_\_

**TURN INTO FINANCE DAILY**

WATER SOURCE LOCATION	Hydrant	Open source i.e. pond	Tank	Gallons Used	Property Owner / Contact Number if known **

**\*\*Please note if you made contact with property owner and their contact. (Use reverse side if needed.)**  
 Information: \_\_\_\_\_

The intent of this document is intended to track, record and validated the amount of water used on a incident. It's not intended to review the performance of equipment using the water on an incident.



