


122°52'30"W 122°52'0"W 122°51'30"W 122°51'0"W 122°50'30"W 122°50'0"W 122°49'30"W 122°49'0"W 122°48'30"W

38°49'30"N
38°49'0"N
38°48'30"N
38°48'0"N

38°49'30"N
38°49'0"N
38°48'30"N
38°48'0"N

NATIONAL
INFRARED OPERATIONS


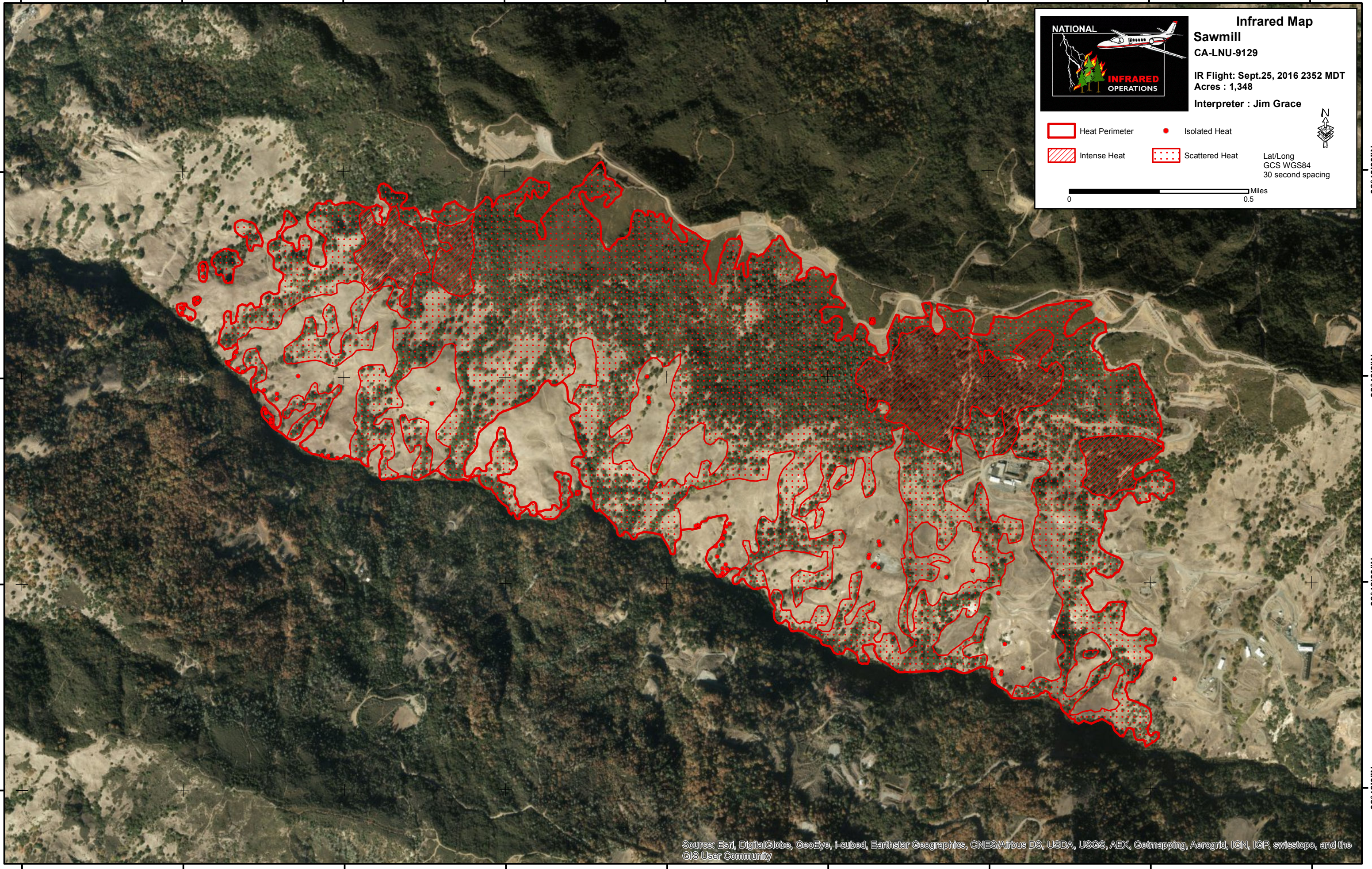


Infrared Map
Sawmill
CA-LNU-9129
IR Flight: Sept.25, 2016 2352 MDT
Acres : 1,348
Interpreter : Jim Grace

Heat Perimeter Isolated Heat
Intense Heat Scattered Heat

Lat/Long
GCS WGS84
30 second spacing

0 0.5 Miles

Source: Esri, DigitalGlobe, GeoEye, i-cubed, Earthstar Geographics, CNES/Airbus DS, USDA, USGS, AEX, Getmapping, Aerogrid, IGN, IGP, swisstopo, and the GIS User Community

122°52'30"W 122°52'0"W 122°51'30"W 122°51'0"W 122°50'30"W 122°50'0"W 122°49'30"W 122°49'0"W 122°48'30"W