

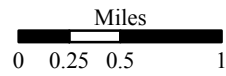
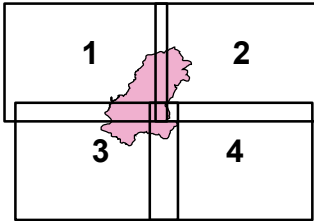


IAP Page Grid Index

Loma Incident CA-SCU-006912

September 28, 2016
0700-0700
NAD 83

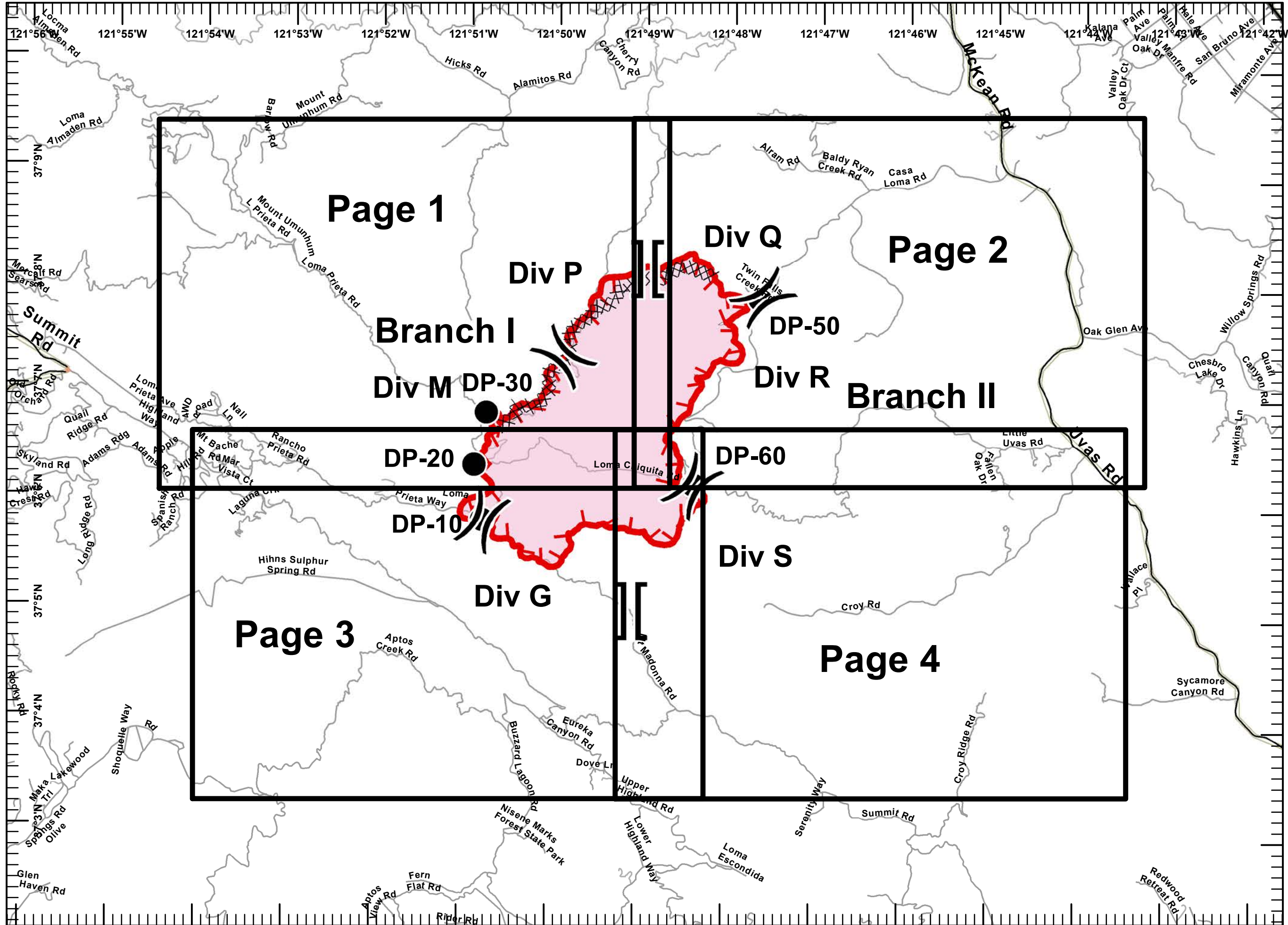
- Division
- Branch
- Drop Point
- Uncontrolled Fire Edge
- Completed Dozer Line



1:60,000



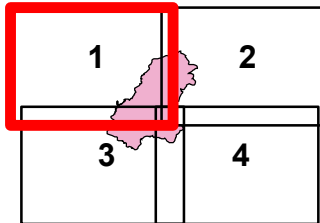
Postler IMT2
September 28, 2016
0207





IAP MAP
Loma Incident
CA-SCU-006912
 September 28, 2016
 0700-0700
 NAD 83
 Page 1 of 4

- Division
- Branch
- Drop Point
- Uncontrolled Fire Edge
- Completed Dozer Line



Miles
 0 0.125 0.25 0.5



1:24,000

Postler IMT2
 September 28, 2016
 0154





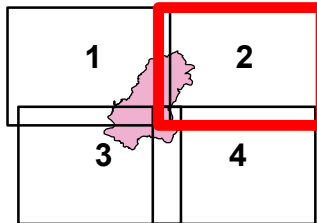
IAP MAP

Loma Incident

CA-SCU-006912

September 28, 2016
0700-0700
NAD 83
Page 2 of 4

- Division
- Branch
- Drop Point
- Uncontrolled Fire Edge
- Completed Dozer Line

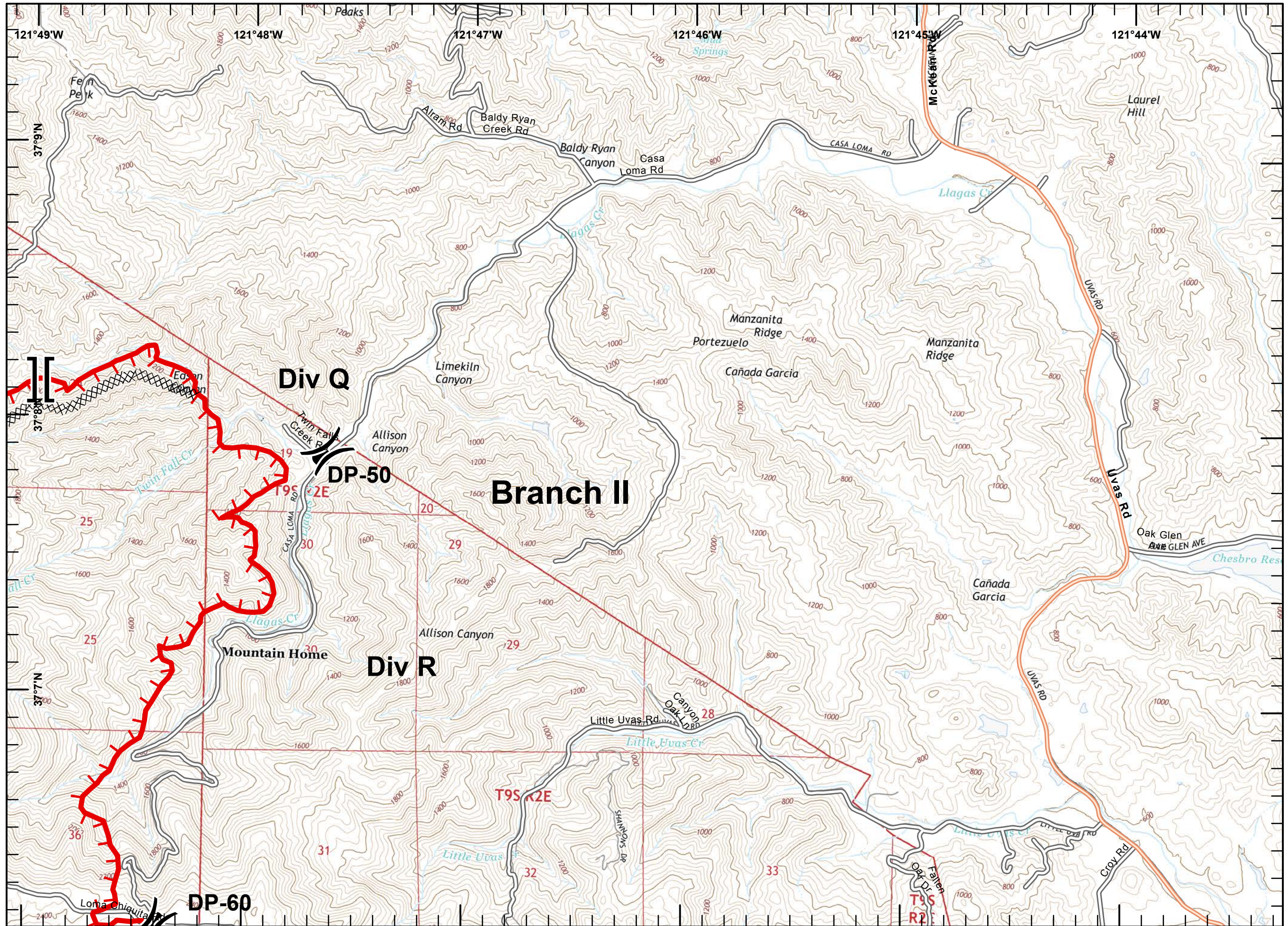


Miles
0 0.125 0.25 0.5



1:24,000

Poster IMT2
September 28, 2016
0154

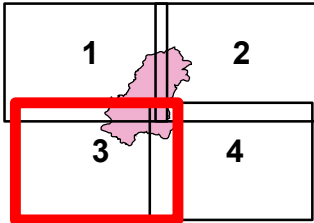




IAP MAP
Loma Incident
CA-SCU-006912

September 28, 2016
 0700-0700
 NAD 83
 Page 3 of 4

- Division
- Branch
- Drop Point
- Uncontrolled Fire Edge
- Completed Dozer Line

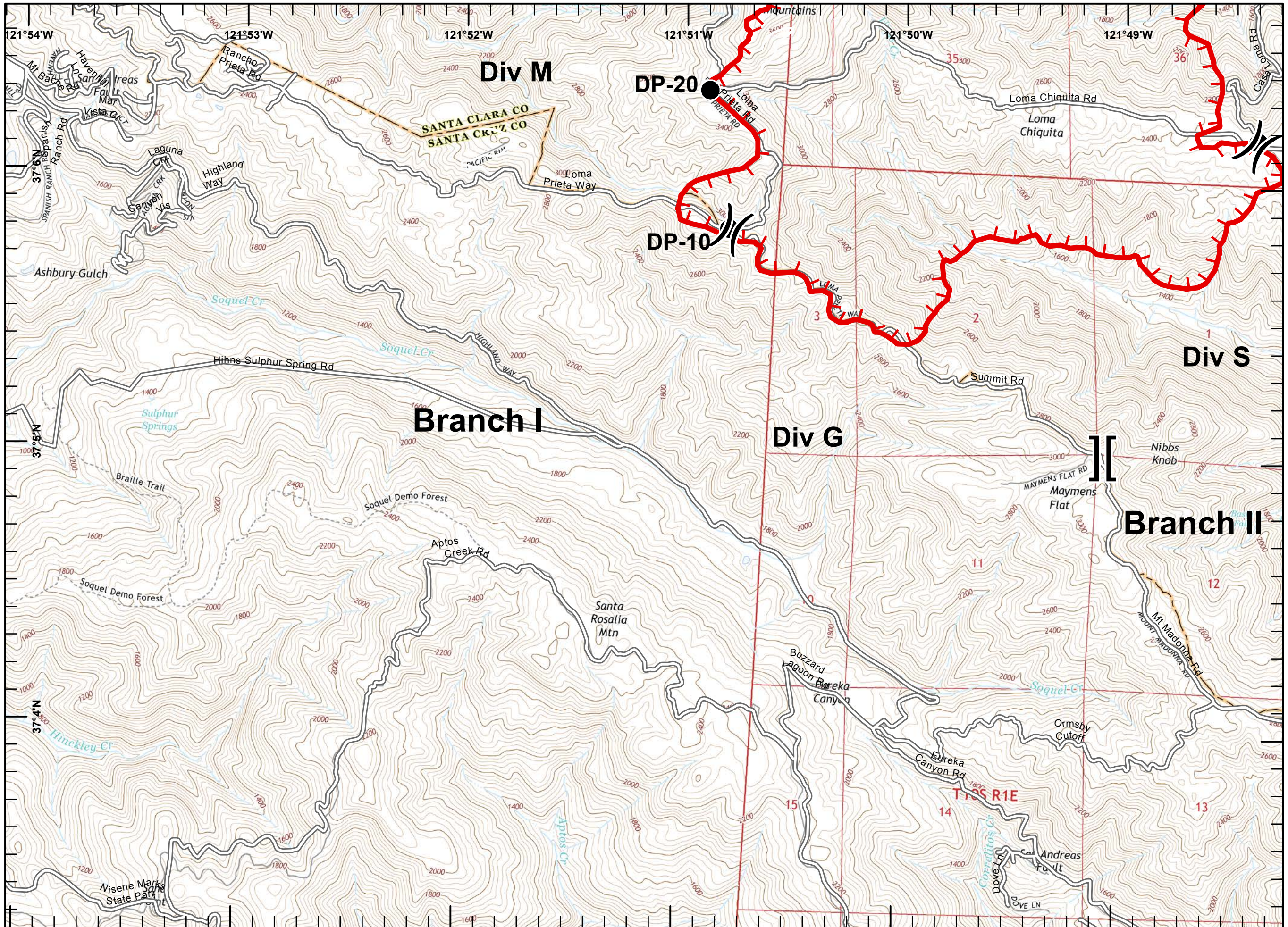


Miles
 0 0.125 0.25 0.5



1:24,000

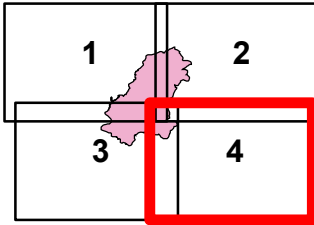
Postler IMT2
 September 28, 2016
 0154





IAP MAP
Loma Incident
CA-SCU-006912
 September 28, 2016
 0700-0700
 NAD 83
 Page 4 of 4

- Division
- Branch
- Drop Point
- Uncontrolled Fire Edge
- Completed Dozer Line



Miles
 0 0.125 0.25 0.5



1:24,000

Poster IMT2
 September 28, 2016
 0154

