

Datum: NAD 83



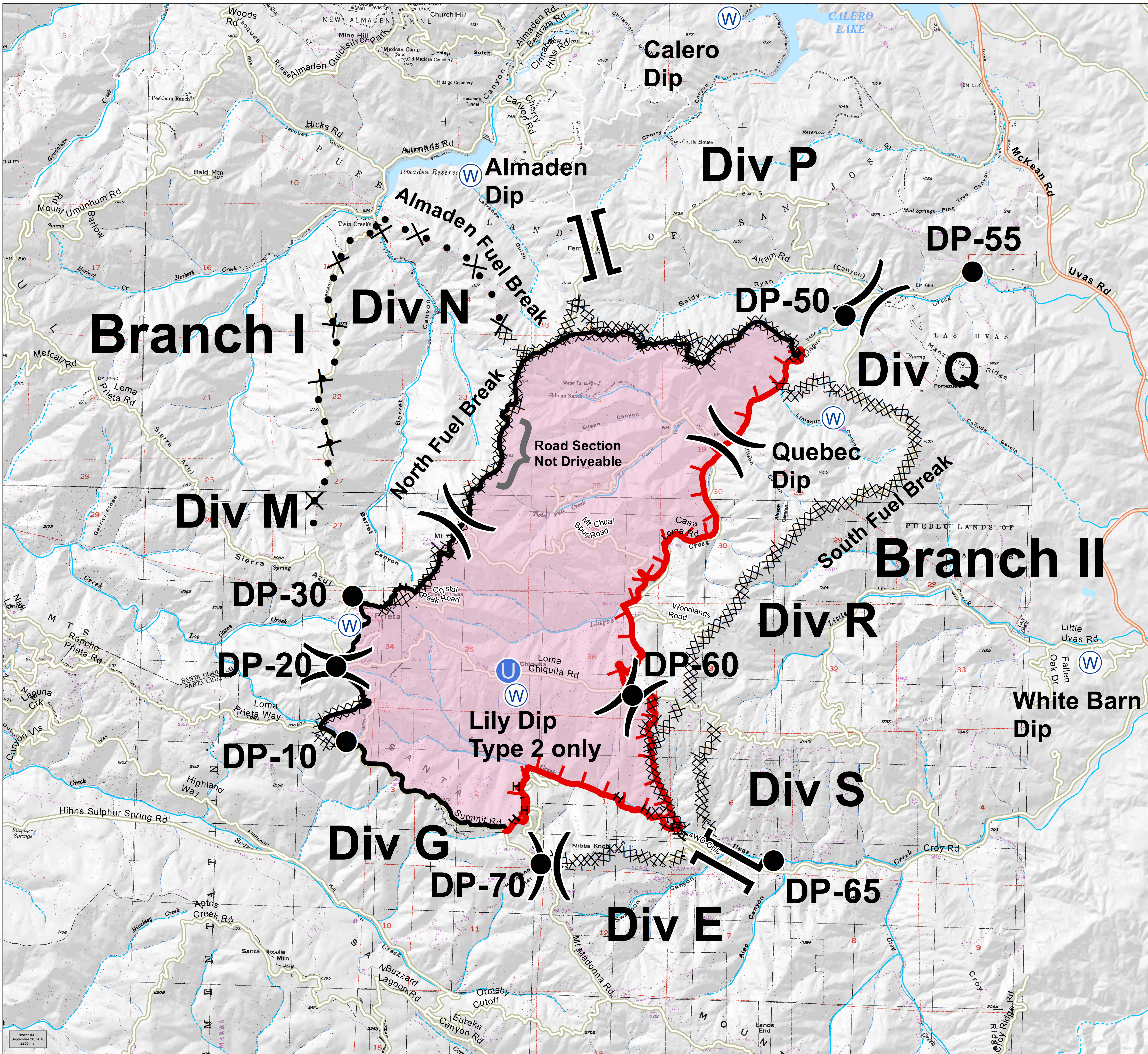
BRIEFING MAP

Loma Incident

CA-SCU-006912
October 1, 2016



- Division
- Branch
- Uncontrolled Fire Edge
- Completed Dozer Line
- Proposed Dozer Line
- Hand Line
- Drop Point
- Water Source
- Unimproved Landing Area



Poster: M12
September 30, 2016
2256 hrs