

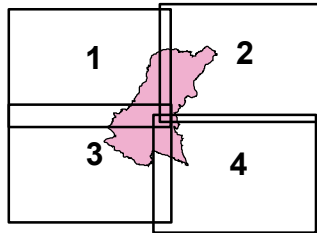


### IAP Page Grid Index

## Loma Incident CA-SCU-006912

October 1, 2016  
0700-0700  
NAD 83

- Division
- Branch
- Drop Point
- Water Source
- Unimproved Landing Area
- Completed Line
- Uncontrolled Fire Edge
- Completed Dozer Line
- Proposed Dozer Line
- Hand Line

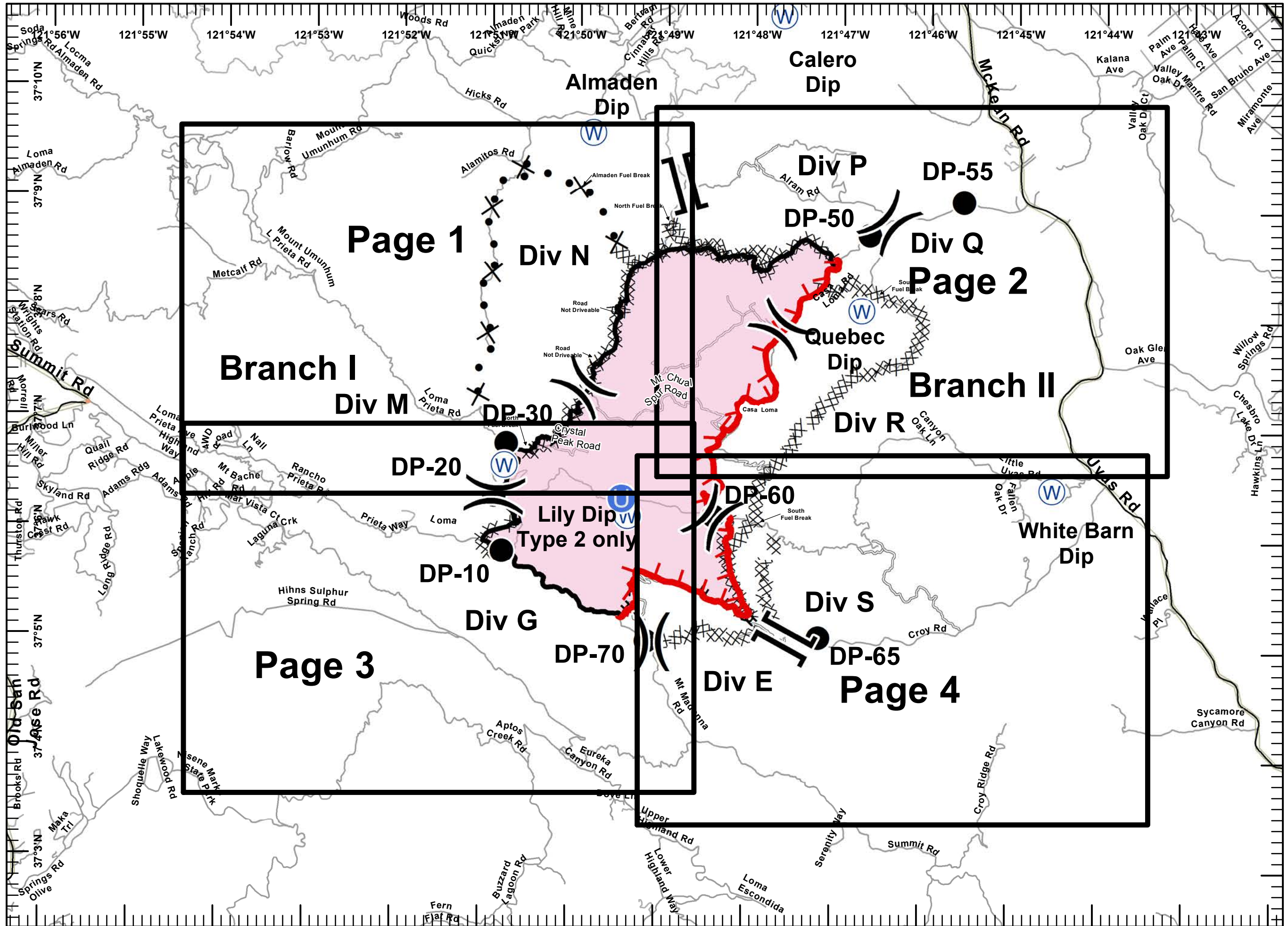


Miles  
0 0.25 0.5 1



1:60,000

Postler IMT2  
September 30, 2016  
2144

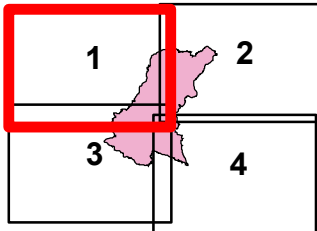




**IAP MAP**  
**Loma Incident**  
**CA-SCU-006912**

October 1, 2016  
 0700-0700  
 NAD 83  
 Page 1 of 4

- Division
- Branch
- Drop Point
- Water Source
- Unimproved Landing Area
- Completed Line
- Uncontrolled Fire Edge
- Completed Dozer Line
- Proposed Dozer Line
- Hand Line

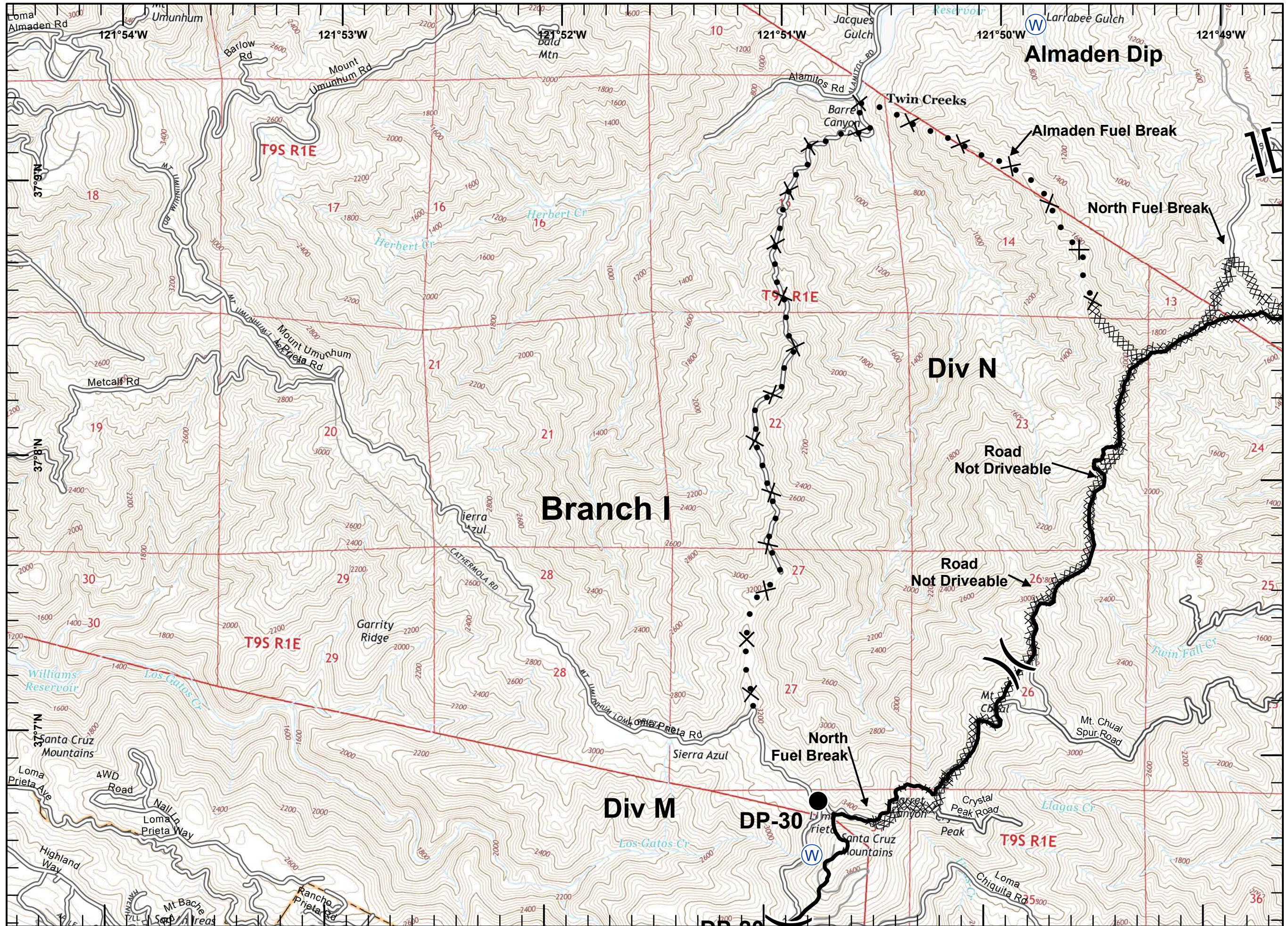


Miles  
 0 0.125 0.25 0.5



1:24,000

Postler IMT2  
 September 30, 2016  
 2210





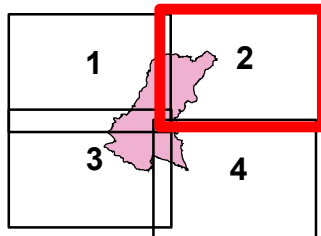
# IAP MAP

## Loma Incident

### CA-SCU-006912

October 1, 2016  
0700-0700  
NAD 83  
Page 2 of 4

- Division
- Branch
- Drop Point
- Water Source
- Unimproved Landing Area
- Completed Line
- Uncontrolled Fire Edge
- Completed Dozer Line
- Proposed Dozer Line
- Hand Line

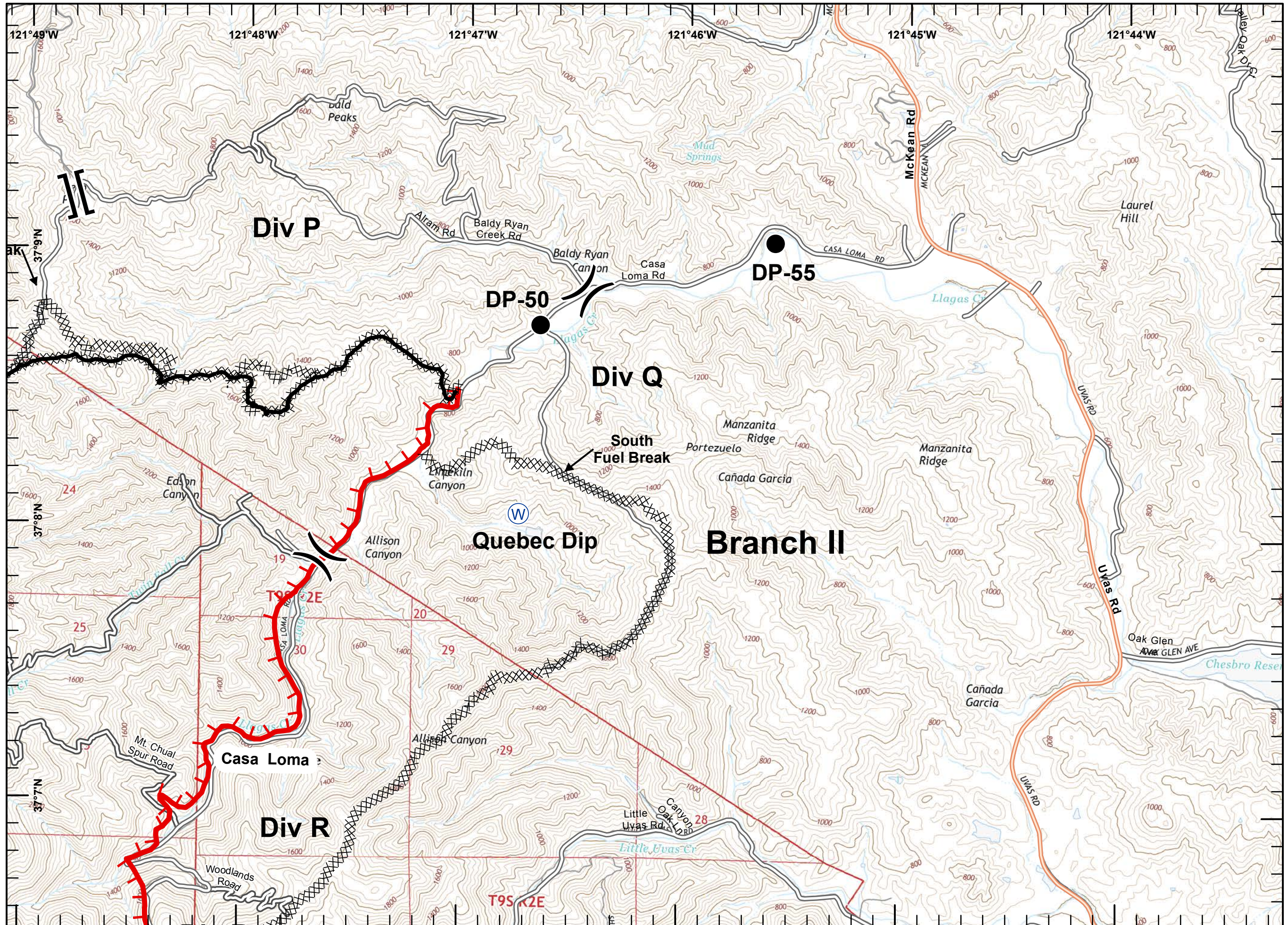


Miles  
0 0.125 0.25 0.5



1:24,000

Poster IMT2  
September 30, 2016  
2210

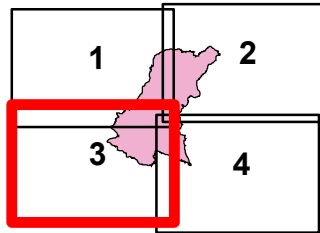




**IAP MAP**  
**Loma Incident**  
**CA-SCU-006912**

October 1, 2016  
 0700-0700  
 NAD 83  
 Page 3 of 4

- Division
- Branch
- Drop Point
- Water Source
- Unimproved Landing Area
- Completed Line
- Uncontrolled Fire Edge
- Completed Dozer Line
- Proposed Dozer Line
- Hand Line

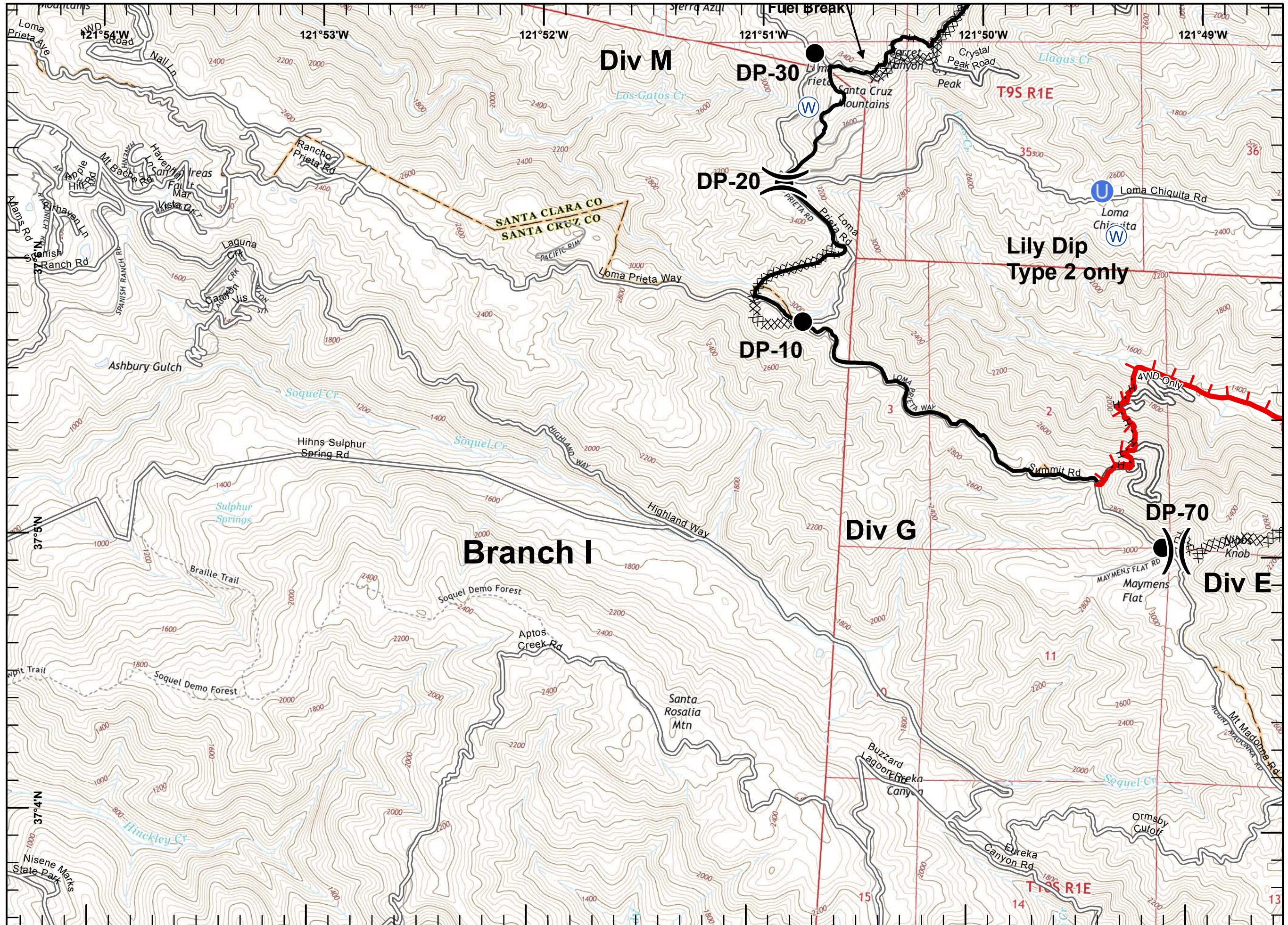


Miles  
 0 0.125 0.25 0.5



1:24,000

Poster IMT2  
 September 30, 2016  
 2211

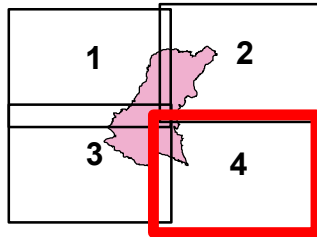




**IAP MAP**  
**Loma Incident**  
**CA-SCU-006912**

October 1, 2016  
 0700-0700  
 NAD 83  
 Page 4 of 4

- Division
- Branch
- Drop Point
- Water Source
- Unimproved Landing Area
- Completed Line
- Uncontrolled Fire Edge
- Completed Dozer Line
- Proposed Dozer Line
- Hand Line



Miles  
 0 0.125 0.25 0.5



1:24,000

Postler IMT2  
 September 30, 2016  
 2211

