

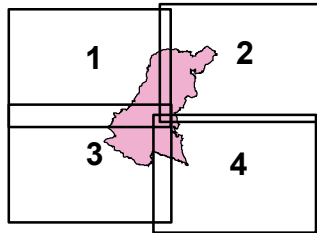


IAP Page Grid Index

Loma Incident CA-SCU-006912

October 4, 2016
0700-0700
NAD 83

- Division
- Branch
- Drop Point
- Water Source
- Unimproved Landing Area
- Completed Line
- Uncontrolled Fire Edge
- Completed Dozer Line
- Hand Line

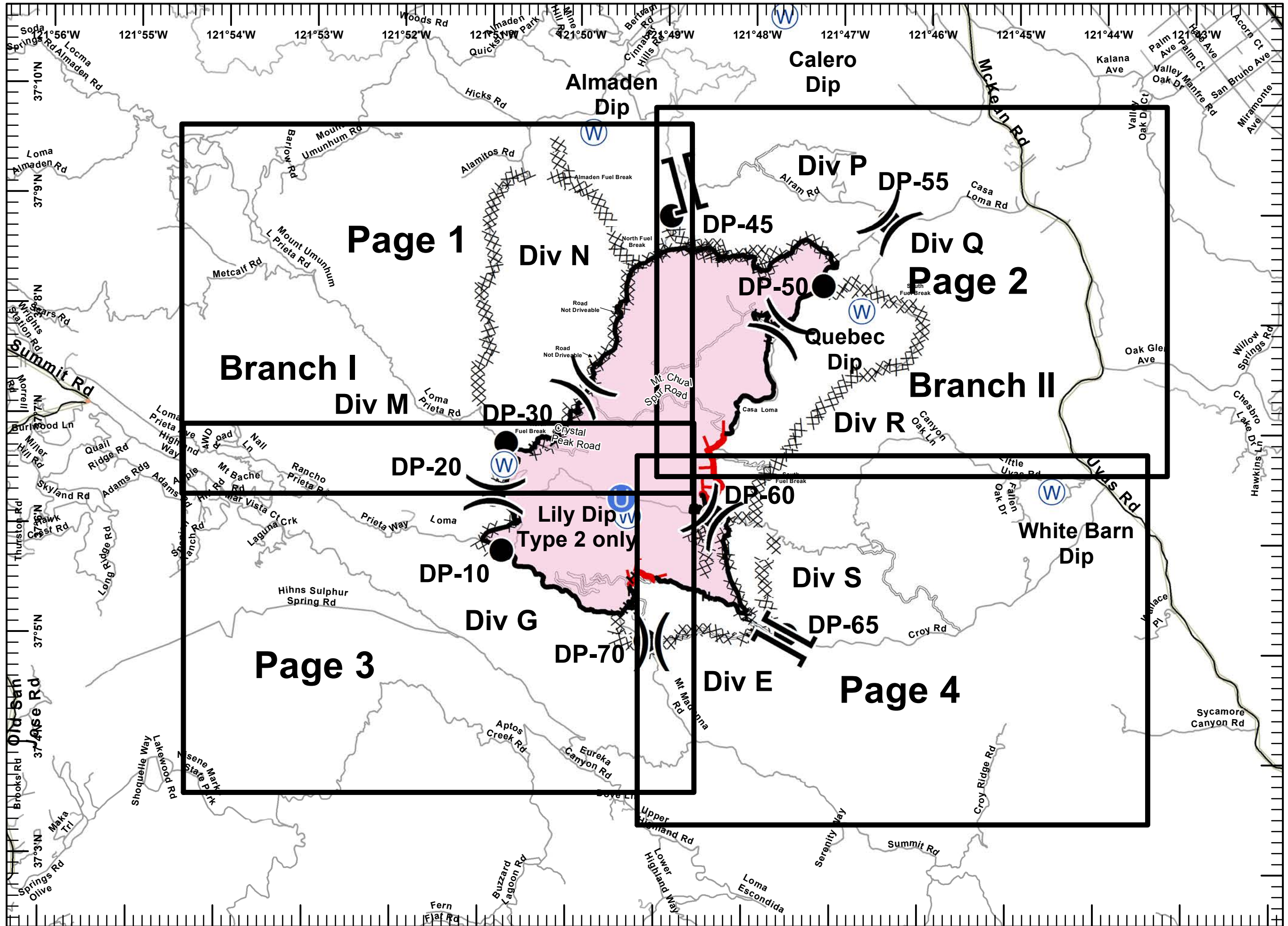


Miles
0 0.25 0.5 1



1:60,000

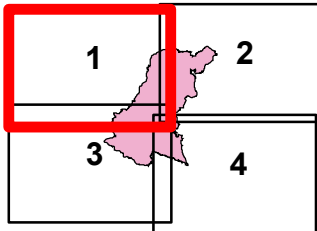
Postler IMT2
October 03, 2016
2010





IAP MAP
Loma Incident
CA-SCU-006912
 October 4, 2016
 0700-0700
 NAD 83
 Page 1 of 4

- Division
- Branch
- Drop Point
- Water Source
- Unimproved Landing Area
- Completed Line
- Uncontrolled Fire Edge
- Completed Dozer Line
- Hand Line

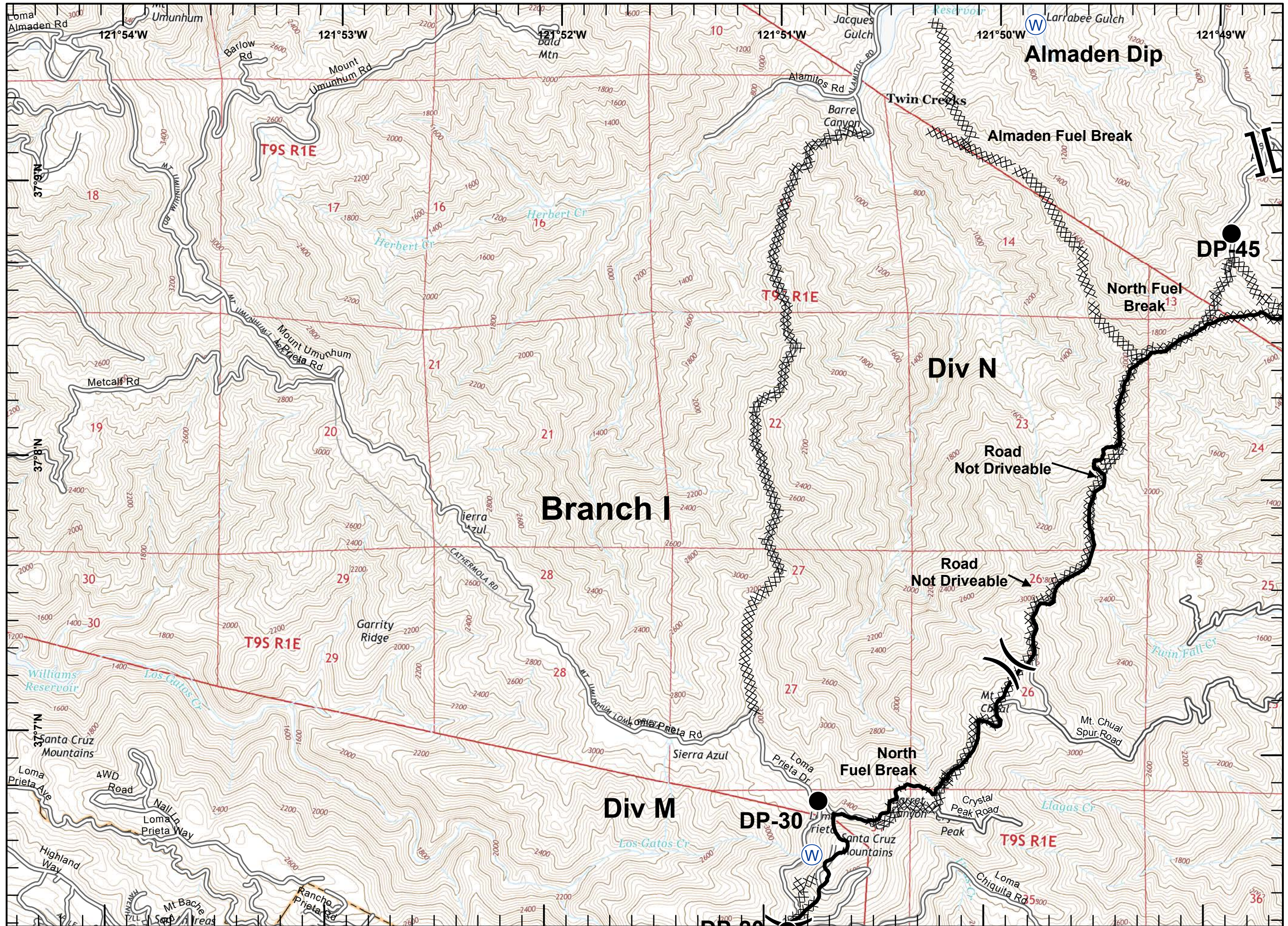


Miles
 0 0.125 0.25 0.5



1:24,000

Postler IMT2
 October 03, 2016
 2012





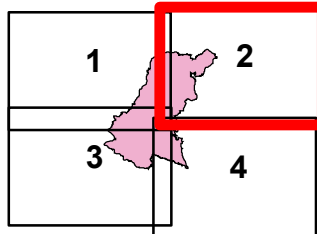
IAP MAP

Loma Incident

CA-SCU-006912

October 4, 2016
0700-0700
NAD 83
Page 2 of 4

- Division
- Branch
- Drop Point
- Water Source
- Unimproved Landing Area
- Completed Line
- Uncontrolled Fire Edge
- Completed Dozer Line
- Hand Line

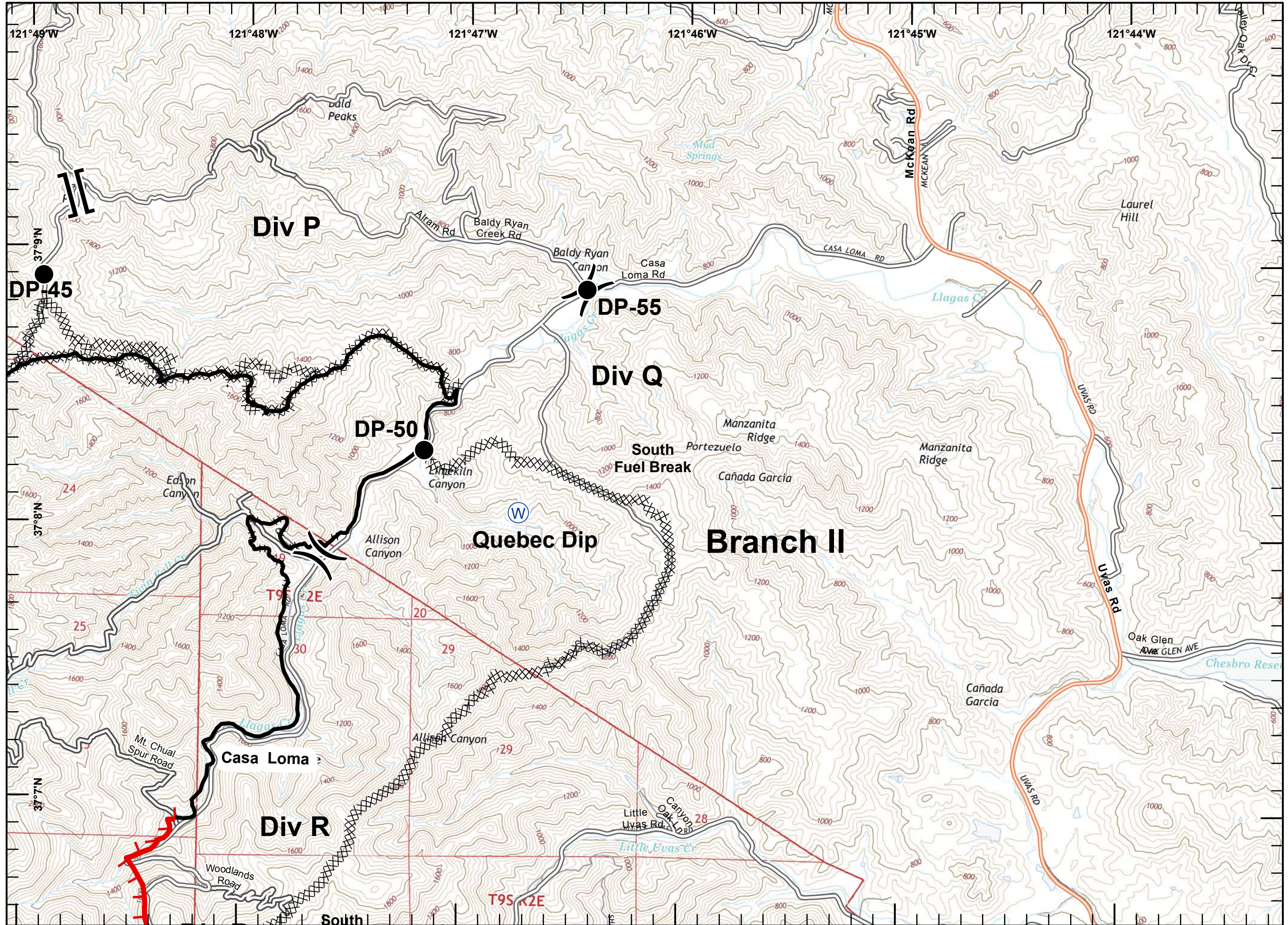


Miles
0 0.125 0.25 0.5



1:24,000

Poster IMT2
October 03, 2016
2012





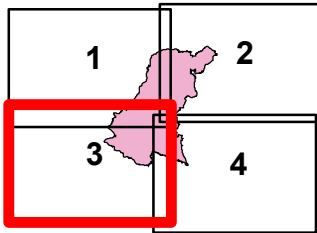
IAP MAP

Loma Incident

CA-SCU-006912

October 4, 2016
 0700-0700
 NAD 83
 Page 3 of 4

- Division
- Branch
- Drop Point
- Water Source
- Unimproved Landing Area
- Completed Line
- Uncontrolled Fire Edge
- Completed Dozer Line
- Hand Line

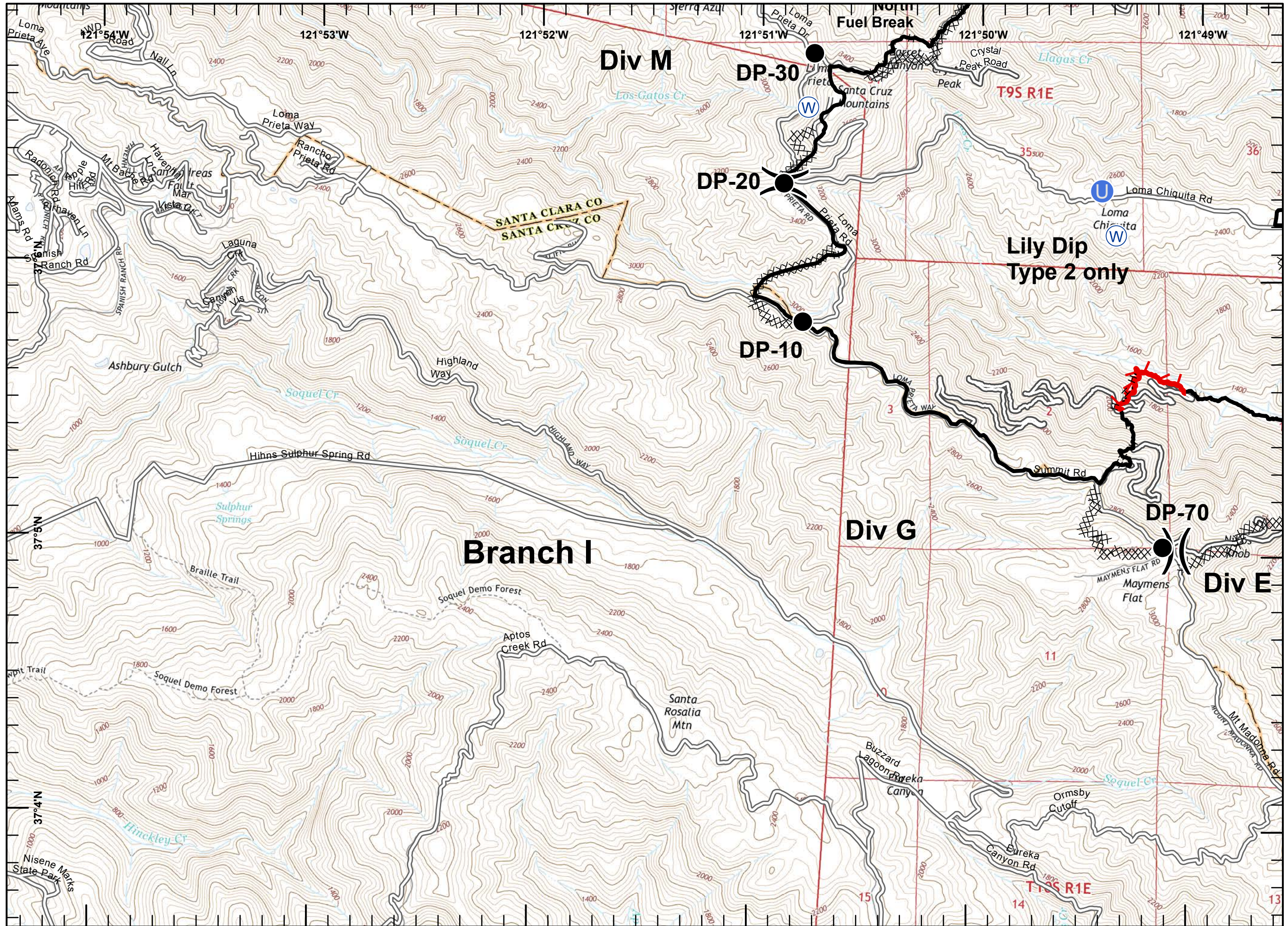


Miles
 0 0.125 0.25 0.5



1:24,000

Poster IMT2
 October 03, 2016
 2013

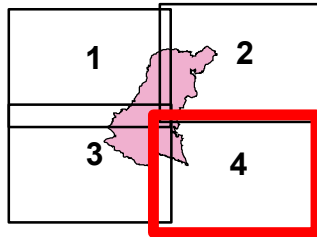




IAP MAP
Loma Incident
CA-SCU-006912

October 4, 2016
 0700-0700
 NAD 83
 Page 4 of 4

- Division
- Branch
- Drop Point
- Water Source
- Unimproved Landing Area
- Completed Line
- Uncontrolled Fire Edge
- Completed Dozer Line
- Hand Line



Miles
 0 0.125 0.25 0.5



1:24,000

Postler IMT2
 October 03, 2016
 2013

