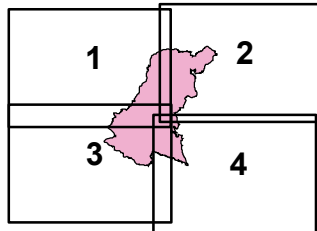




IAP Page Grid Index

Loma Incident
CA-SCU-006912
10/5/2016 0700
to 10/9/2016 0700
NAD 83

- Division
- Branch
- Drop Point
- Water Source
- Unimproved Landing Area
- Completed Line
- Uncontrolled Fire Edge
- Completed Dozer Line
- Hand Line

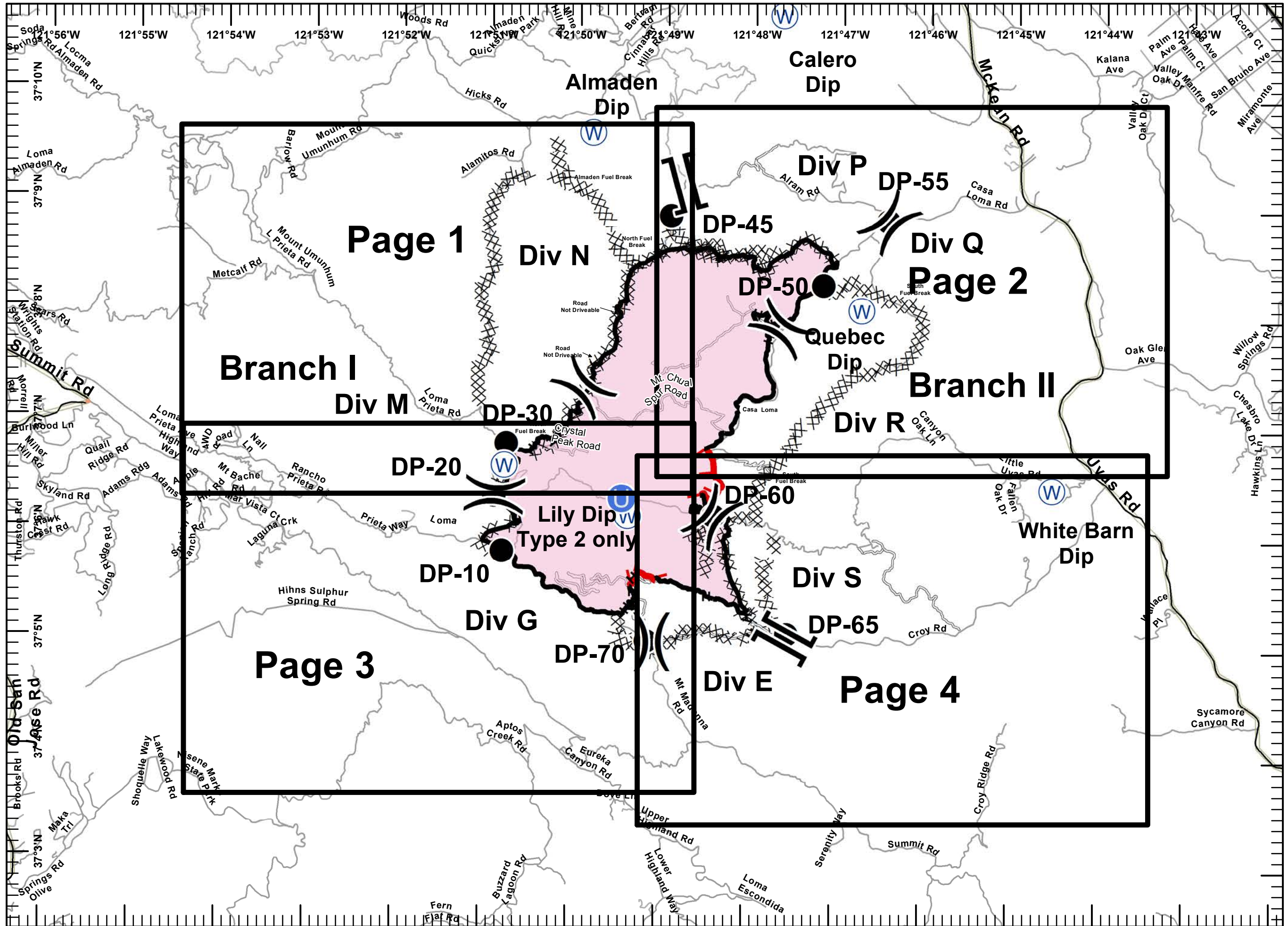


Miles
0 0.25 0.5 1



1:60,000

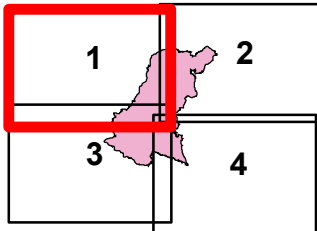
Postler IMT2
October 04, 2016
1944





IAP MAP
Loma Incident
CA-SCU-006912
 10/5/2016 0700
 to 10/9/2016 0700
 NAD 83
 Page 1 of 4

- Division
- Branch
- Drop Point
- Water Source
- Unimproved Landing Area
- Completed Line
- Uncontrolled Fire Edge
- Completed Dozer Line
- Hand Line

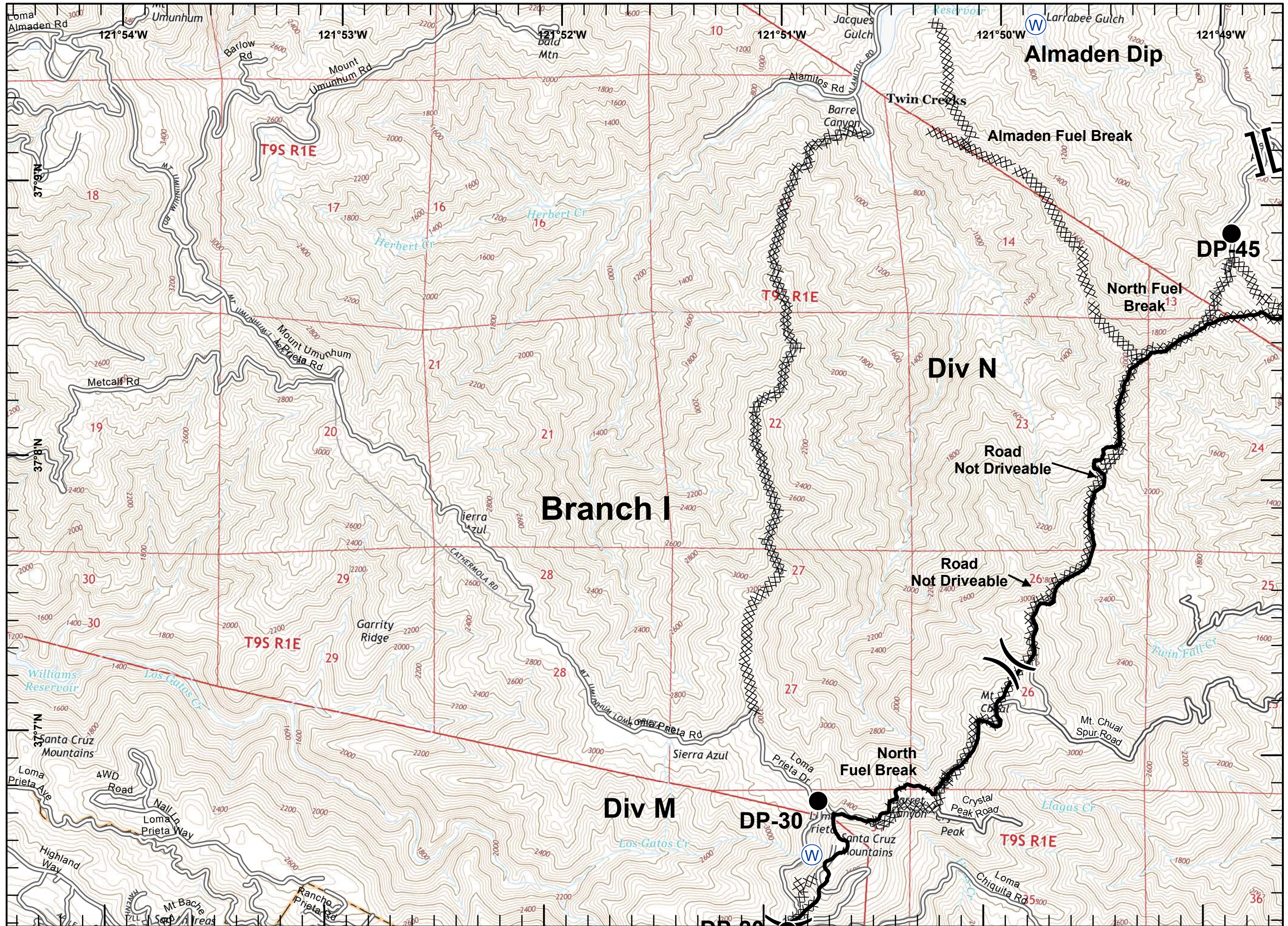


Miles
 0 0.125 0.25 0.5



1:24,000

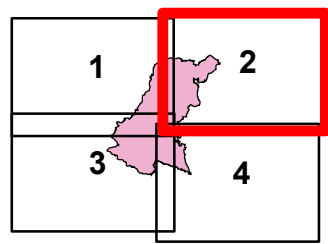
Postler IMT2
 October 04, 2016
 1936





IAP MAP
Loma Incident
CA-SCU-006912
10/5/2016 0700
to 10/9/2016 0700
NAD 83
Page 2 of 4

- Division
- Branch
- Drop Point
- Water Source
- Unimproved Landing Area
- Completed Line
- Uncontrolled Fire Edge
- Completed Dozer Line
- Hand Line

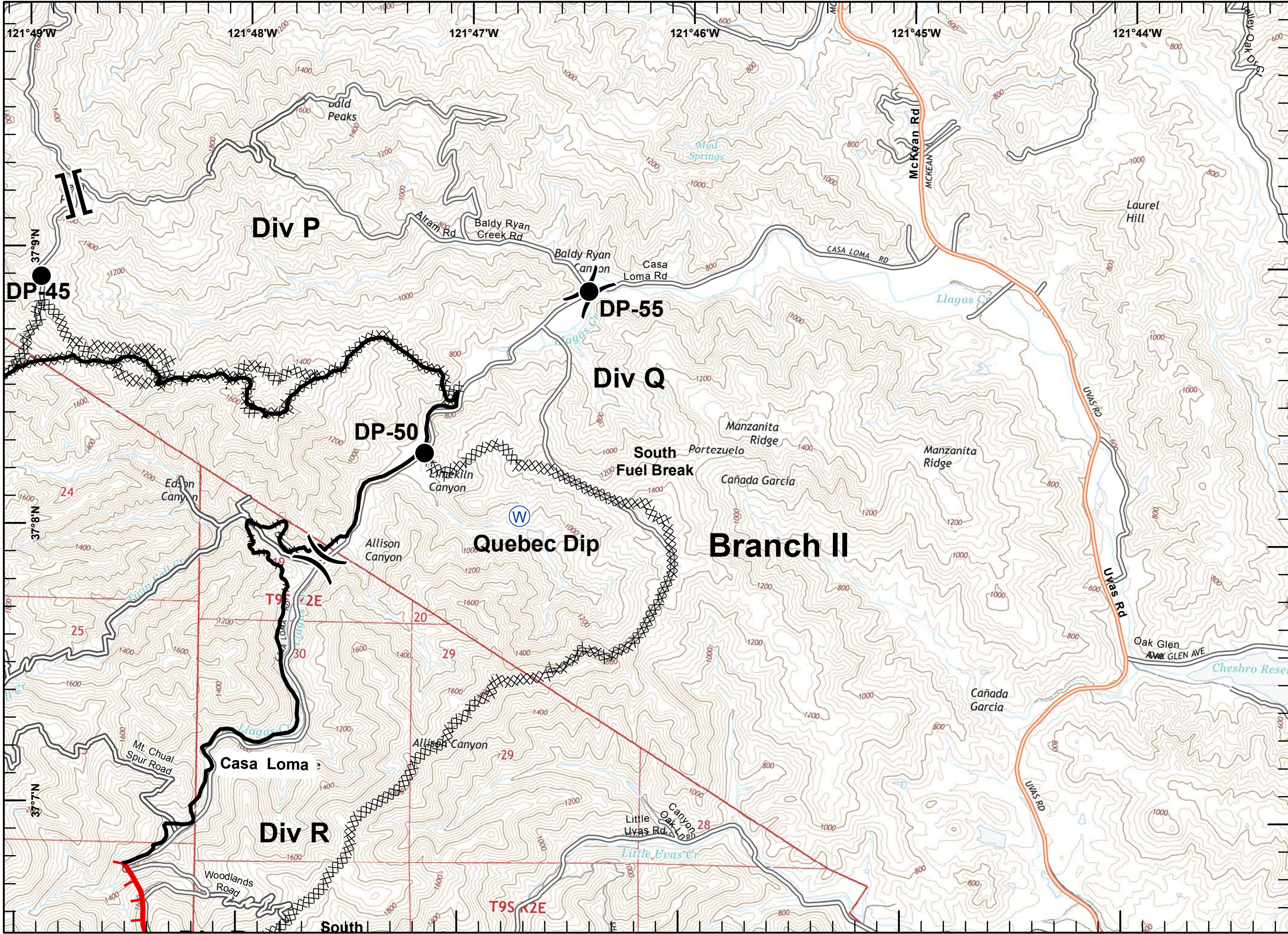


Miles
0 0.125 0.25 0.5



1:24,000

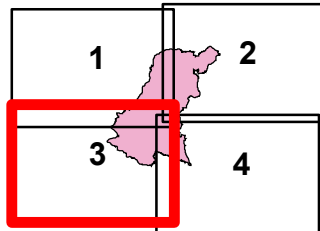
Postler IMT2
October 04, 2016
1936





IAP MAP
Loma Incident
CA-SCU-006912
 10/5/2016 0700
 to 10/9/2016 0700
 NAD 83
 Page 3 of 4

- Division
- Branch
- Drop Point
- Water Source
- Unimproved Landing Area
- Completed Line
- Uncontrolled Fire Edge
- Completed Dozer Line
- Hand Line

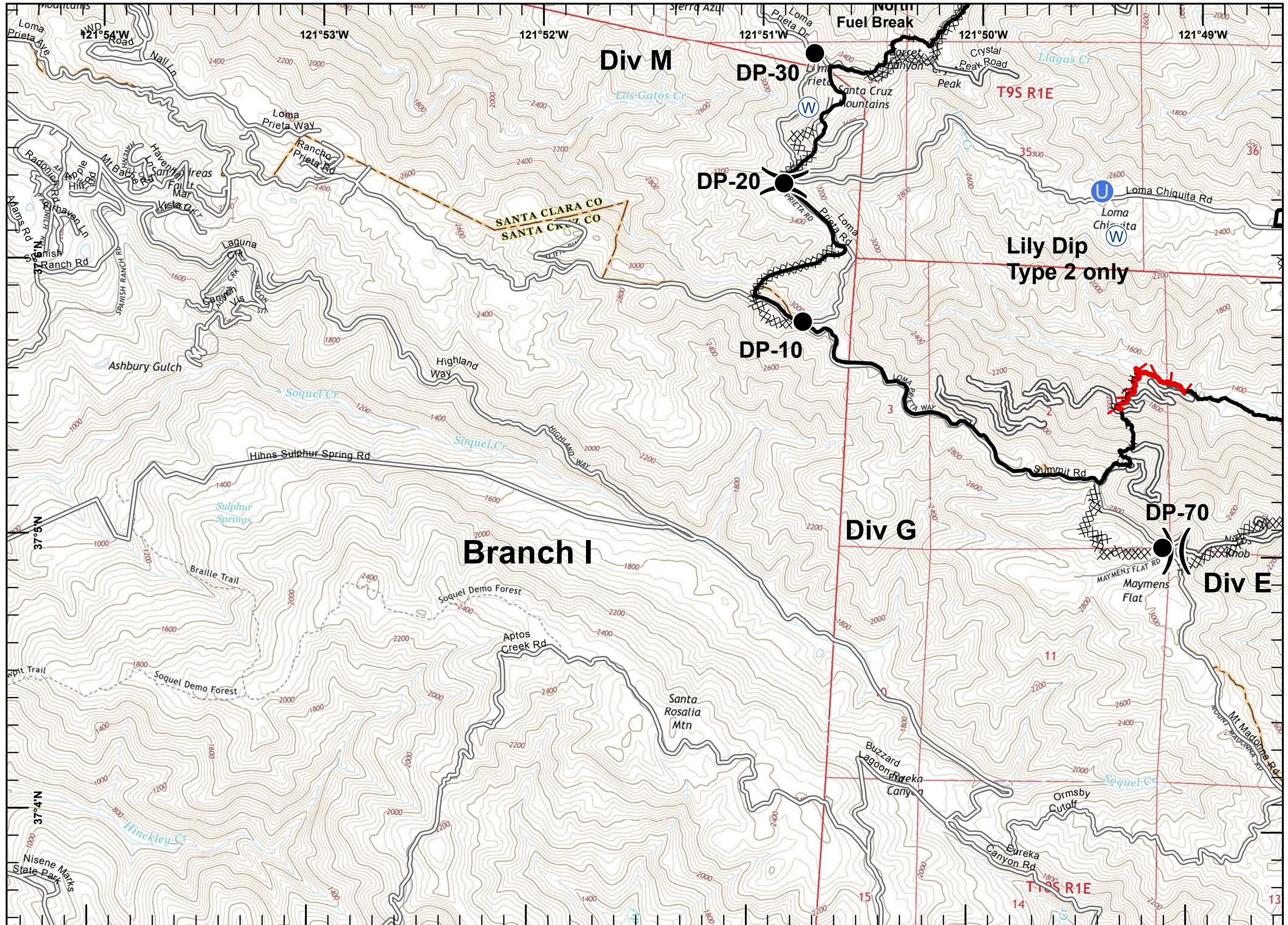


Miles
 0 0.125 0.25 0.5



1:24,000

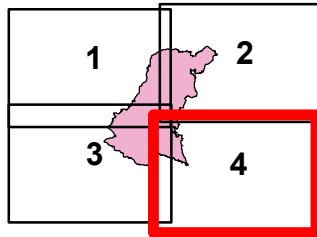
Postler IMT2
 October 04, 2016
 1936





IAP MAP
Loma Incident
CA-SCU-006912
10/5/2016 0700
to 10/9/2016 0700
NAD 83
Page 4 of 4

- Division
- Branch
- Drop Point
- Water Source
- Unimproved Landing Area
- Completed Line
- Uncontrolled Fire Edge
- Completed Dozer Line
- Hand Line



Miles
0 0.125 0.25 0.5



1:24,000

Postler IMT2
October 04, 2016
1936

