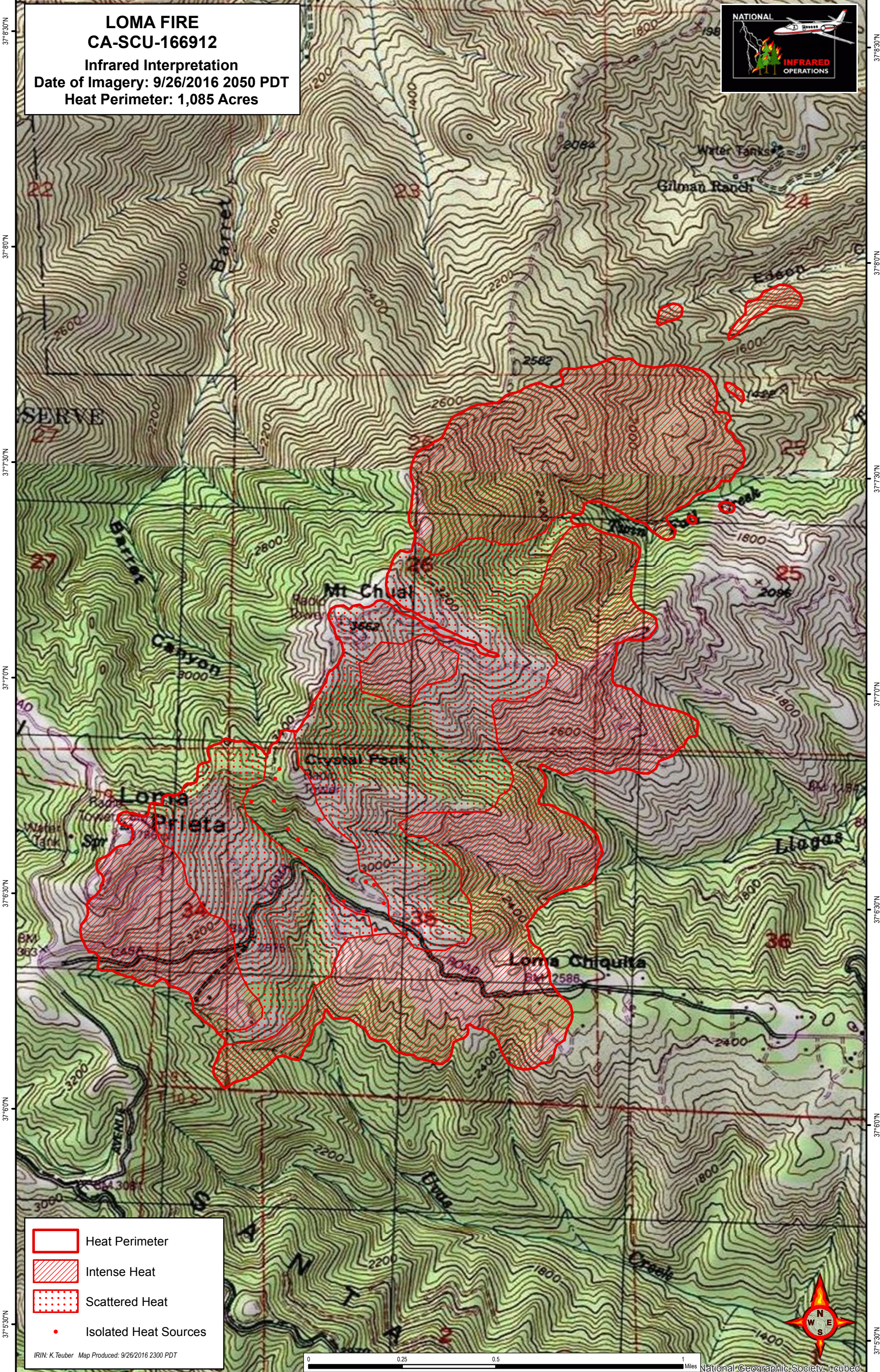






121°51'0"W 121°50'30"W 121°50'0"W 121°49'30"W 121°49'0"W

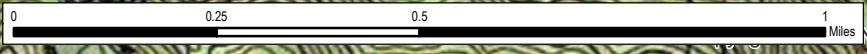


**LOMA FIRE**  
**CA-SCU-166912**  
Infrared Interpretation  
Date of Imagery: 9/26/2016 2050 PDT  
Heat Perimeter: 1,085 Acres



-  Heat Perimeter
-  Intense Heat
-  Scattered Heat
-  Isolated Heat Sources

IRIN: K.Teuber Map Produced: 9/26/2016 2300 PDT



National Geographic Society, i-cubed

121°50'30"W 121°50'0"W 121°49'30"W 121°49'0"W 121°48'30"W

37°53'0"N  
37°50'0"N  
37°47'0"N  
37°44'0"N  
37°41'0"N  
37°38'0"N  
37°35'0"N  
37°32'0"N  
37°29'0"N  
37°26'0"N  
37°23'0"N  
37°20'0"N  
37°17'0"N  
37°14'0"N  
37°11'0"N  
37°8'0"N  
37°5'0"N

37°53'0"N  
37°50'0"N  
37°47'0"N  
37°44'0"N  
37°41'0"N  
37°38'0"N  
37°35'0"N  
37°32'0"N  
37°29'0"N  
37°26'0"N  
37°23'0"N  
37°20'0"N  
37°17'0"N  
37°14'0"N  
37°11'0"N  
37°8'0"N  
37°5'0"N