



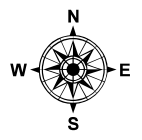
# IAP Index Map

## Wall Incident

CA-BTU-010975  
July 10, 2017  
0700-0700  
NAD 83

- Division
- Branch
- Drop Point
- Staging Area
- Uncontrolled Fire Edge
- Completed Line
- Completed Dozer Line

Page 1	Page 2	Page 3
Page 4	Page 5	Page 6
Page 7	Page 8	Page 9
Page 10	Page 11	

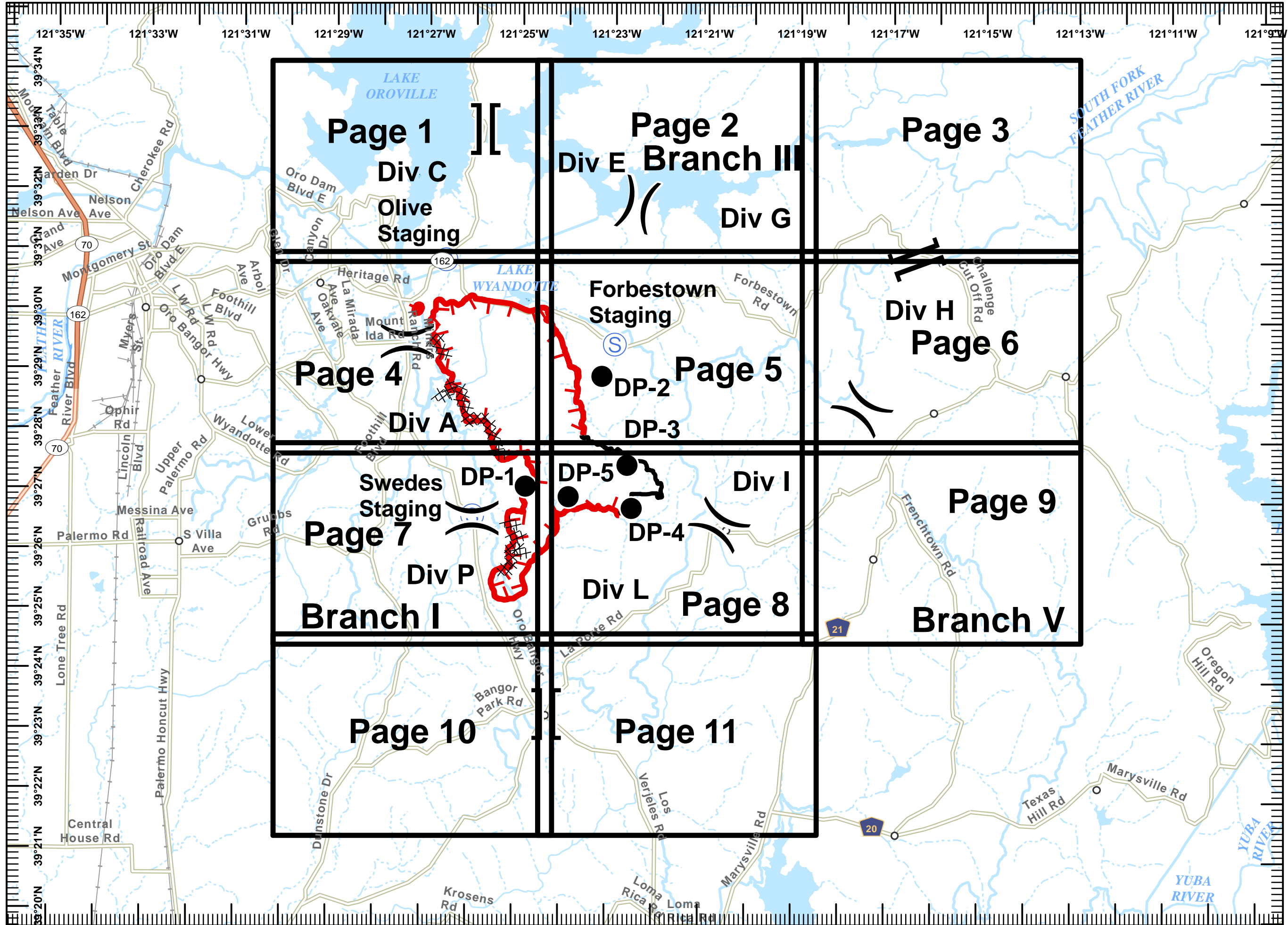


Miles  
0 0.5 1 2



1:110,000

IMT 6 GIS  
July 09, 2017  
2218



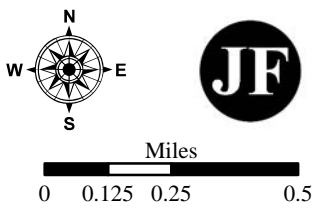


# IAP MAP

Wall Incident  
 CA-BTU-010975  
 July 10, 2017  
 0700-0700  
 NAD 83  
 Page 1 of 11

- Division
- Branch
- Drop Point
- Staging Area
- Uncontrolled Fire Edge
- Completed Line
- Completed Dozer Line

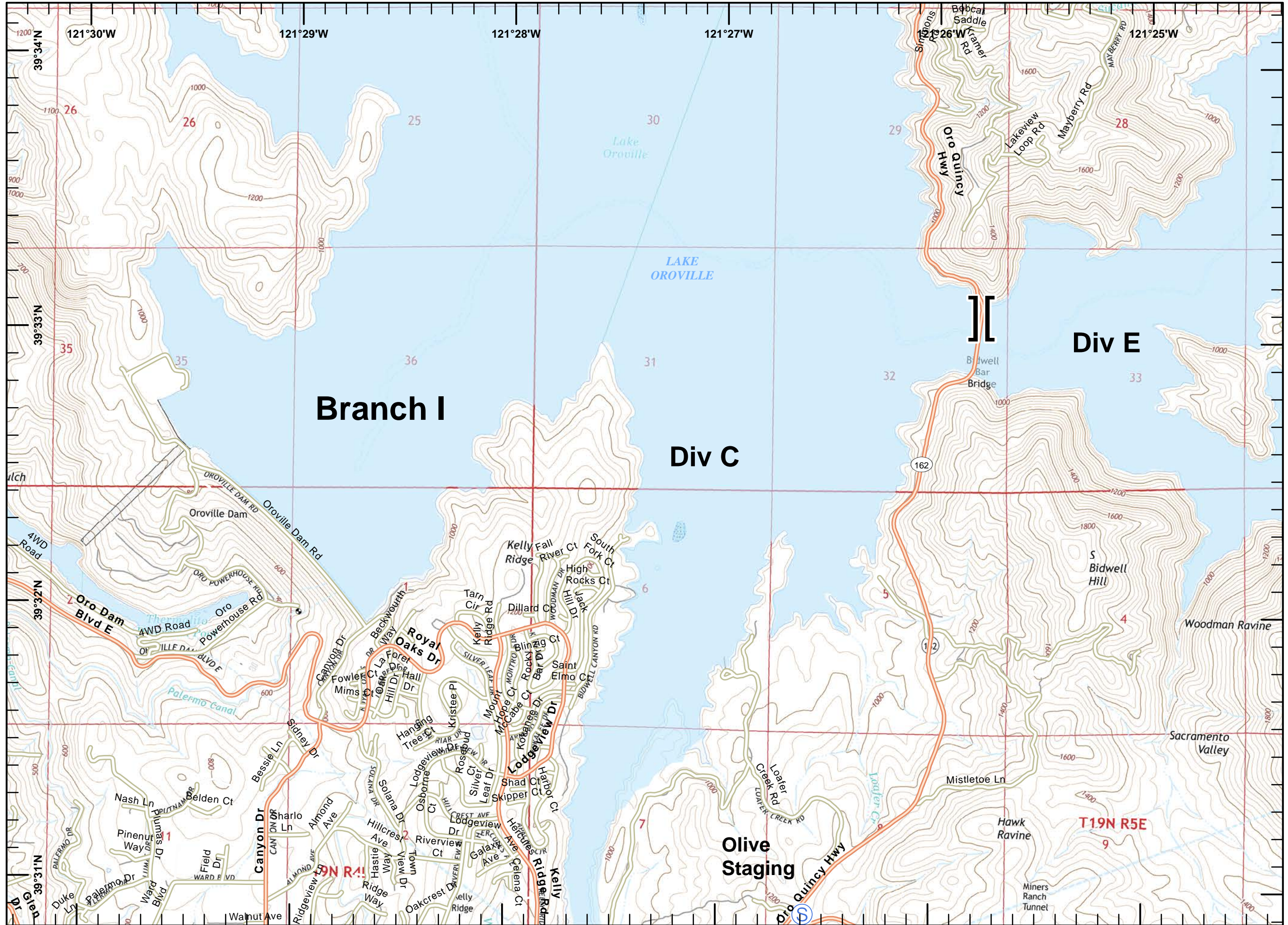
<b>Page 1</b>	Page 2	Page 3
Page 4	Page 5	Page 6
Page 7	Page 8	Page 9
Page 10	Page 11	



1:24,000



IMT 6 GIS  
 July 09, 2017  
 2253



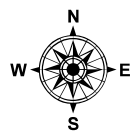


# IAP MAP

Wall Incident  
 CA-BTU-010975  
 July 10, 2017  
 0700-0700  
 NAD 83  
 Page 2 of 11

- Division
- Branch
- Drop Point
- Staging Area
- Uncontrolled Fire Edge
- Completed Line
- Completed Dozer Line

Page 1	Page 2	Page 3
Page 4	Page 5	Page 6
Page 7	Page 8	Page 9
Page 10	Page 11	

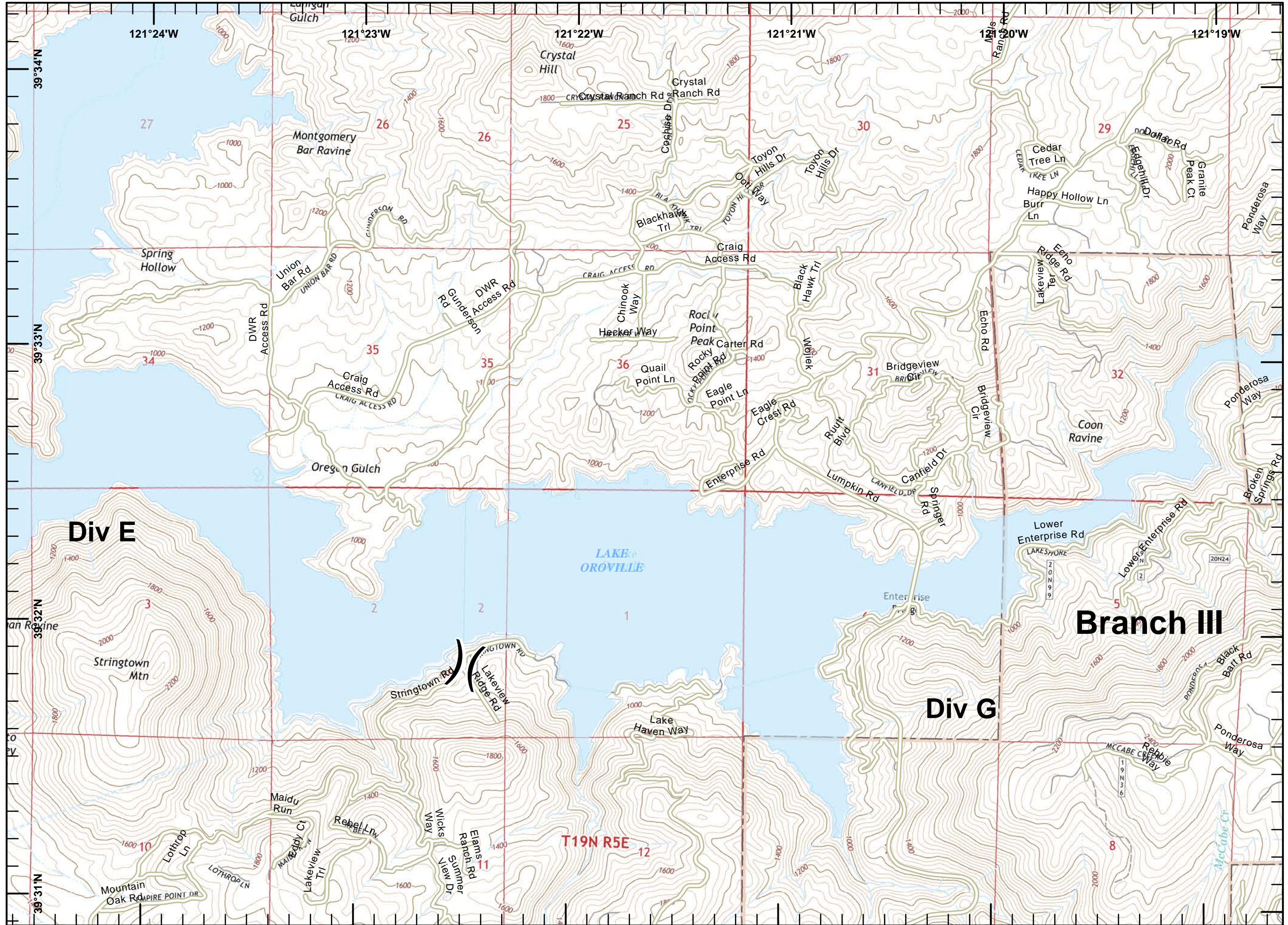


Miles  
 0 0.125 0.25 0.5



1:24,000

IMT 6 GIS  
 July 09, 2017  
 2253



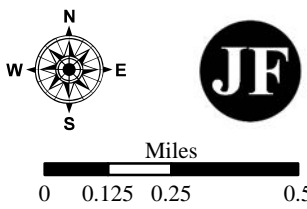


# IAP MAP

Wall Incident  
 CA-BTU-010975  
 July 10, 2017  
 0700-0700  
 NAD 83  
 Page 3 of 11

- Division
- Branch
- Drop Point
- Staging Area
- Uncontrolled Fire Edge
- Completed Line
- Completed Dozer Line

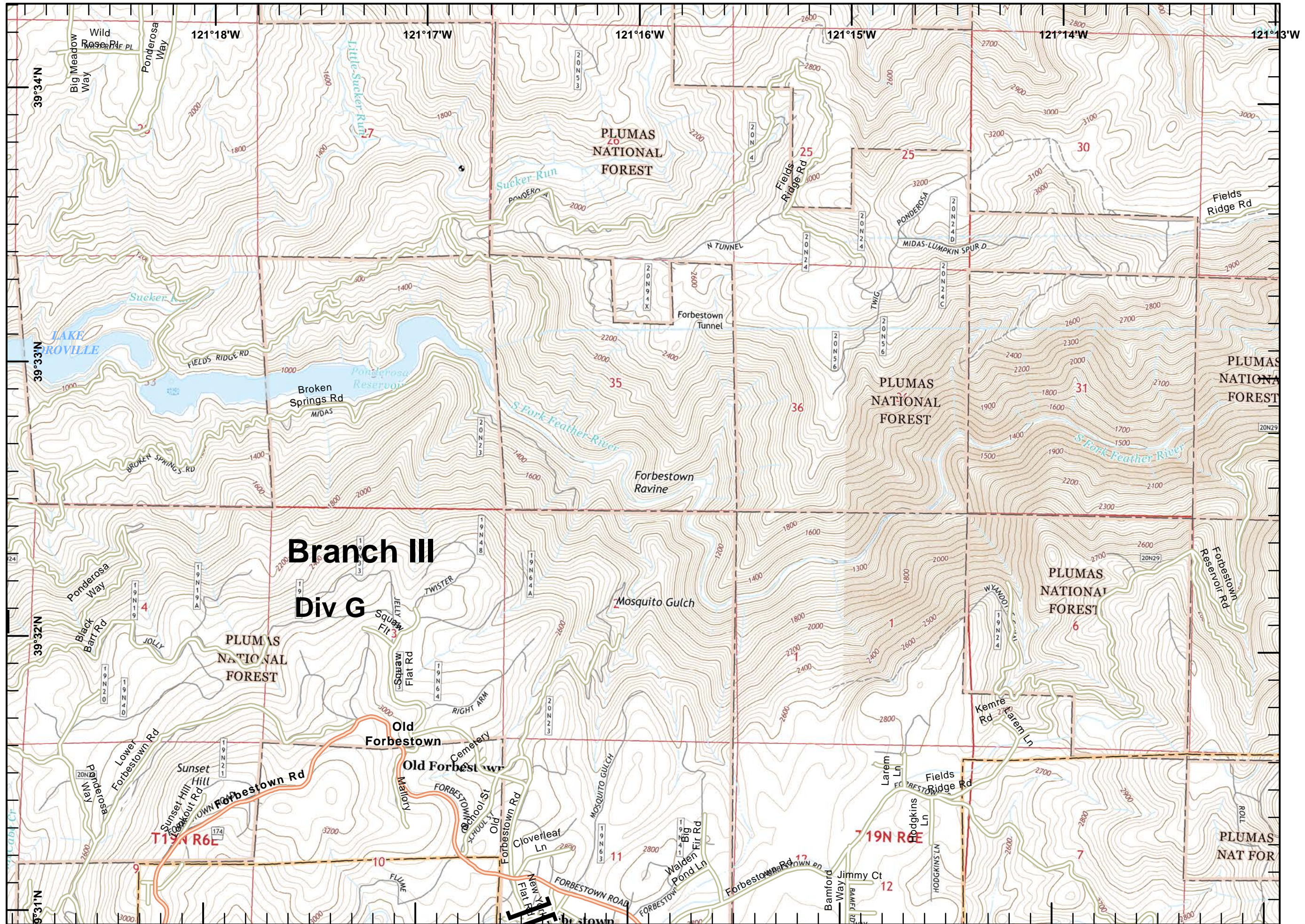
Page 1	Page 2	Page 3
Page 4	Page 5	Page 6
Page 7	Page 8	Page 9
Page 10	Page 11	



1:24,000



IMT 6 GIS  
 July 09, 2017  
 2253



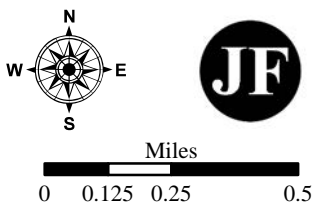


# IAP MAP

Wall Incident  
 CA-BTU-010975  
 July 10, 2017  
 0700-0700  
 NAD 83  
 Page 4 of 11

- Division
- Branch
- Drop Point
- Staging Area
- Uncontrolled Fire Edge
- Completed Line
- Completed Dozer Line

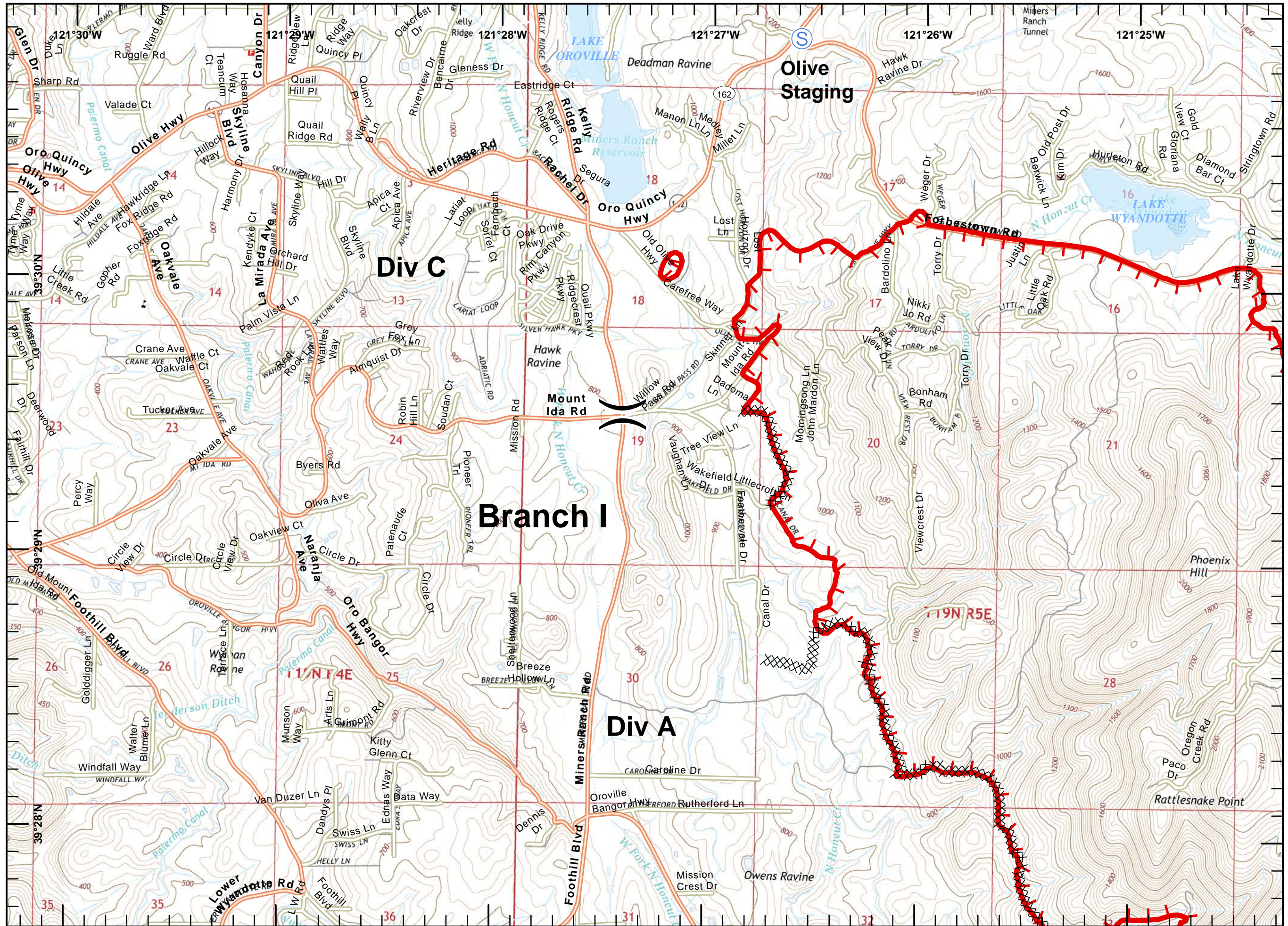
Page 1	Page 2	Page 3
<b>Page 4</b>	Page 5	Page 6
Page 7	Page 8	Page 9
Page 10	Page 11	



1:24,000



IMT 6 GIS  
 July 09, 2017  
 2253



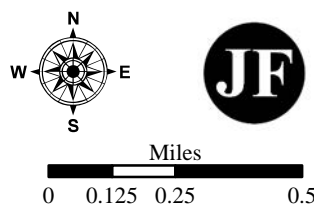


# IAP MAP

Wall Incident  
 CA-BTU-010975  
 July 10, 2017  
 0700-0700  
 NAD 83  
 Page 5 of 11

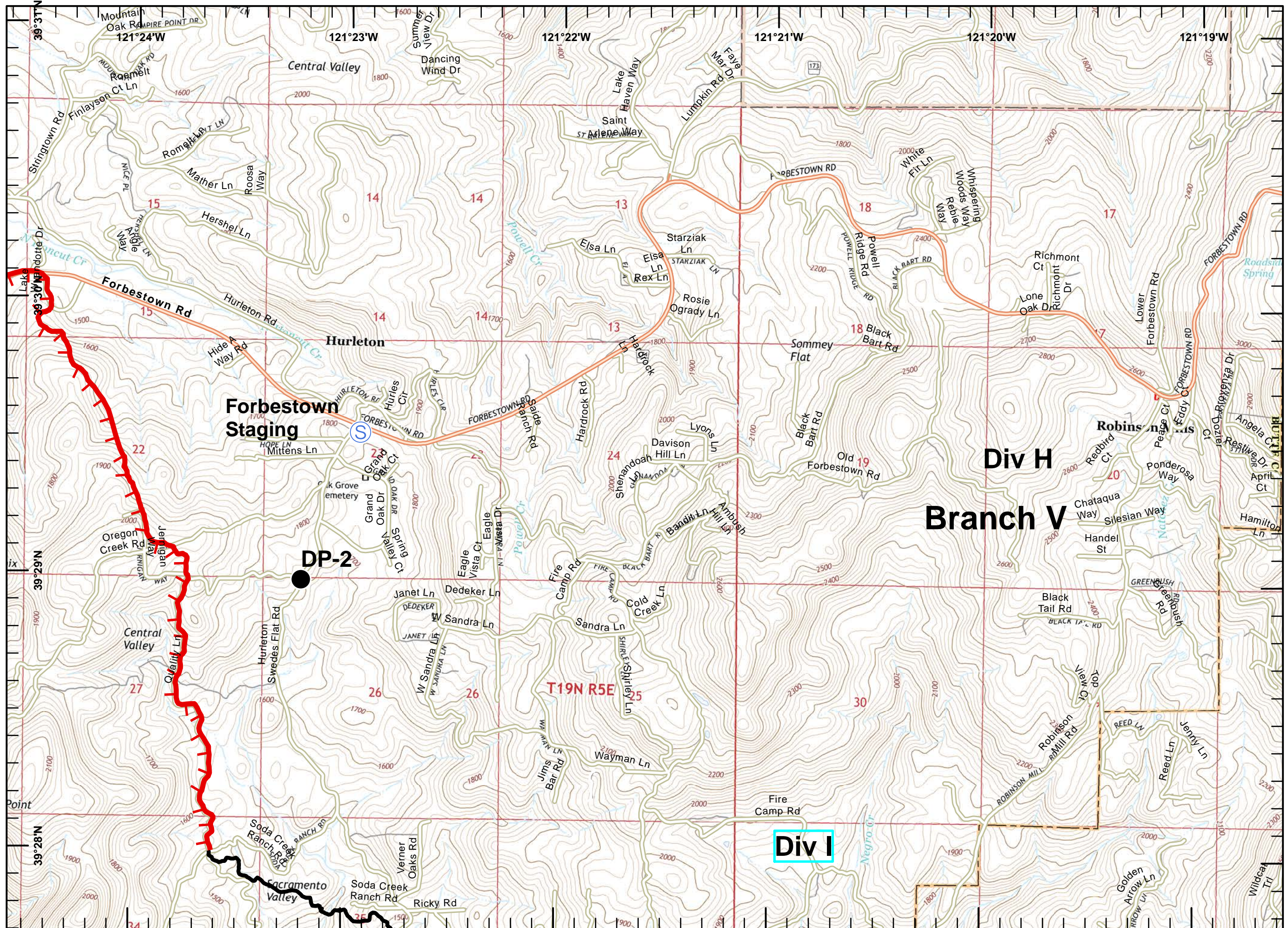
- Division
- Branch
- Drop Point
- Staging Area
- Uncontrolled Fire Edge
- Completed Line
- Completed Dozer Line

Page 1	Page 2	Page 3
Page 4	Page 5	Page 6
Page 7	Page 8	Page 9
Page 10	Page 11	



1:24,000

IMT 6 GIS  
 July 09, 2017  
 2253



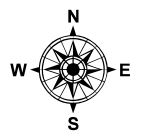


# IAP MAP

Wall Incident  
CA-BTU-010975  
July 10, 2017  
0700-0700  
NAD 83  
Page 6 of 11

- Division
- Branch
- Drop Point
- Staging Area
- Uncontrolled Fire Edge
- Completed Line
- Completed Dozer Line

Page 1	Page 2	Page 3
Page 4	Page 5	<b>Page 6</b>
Page 7	Page 8	Page 9
Page 10	Page 11	

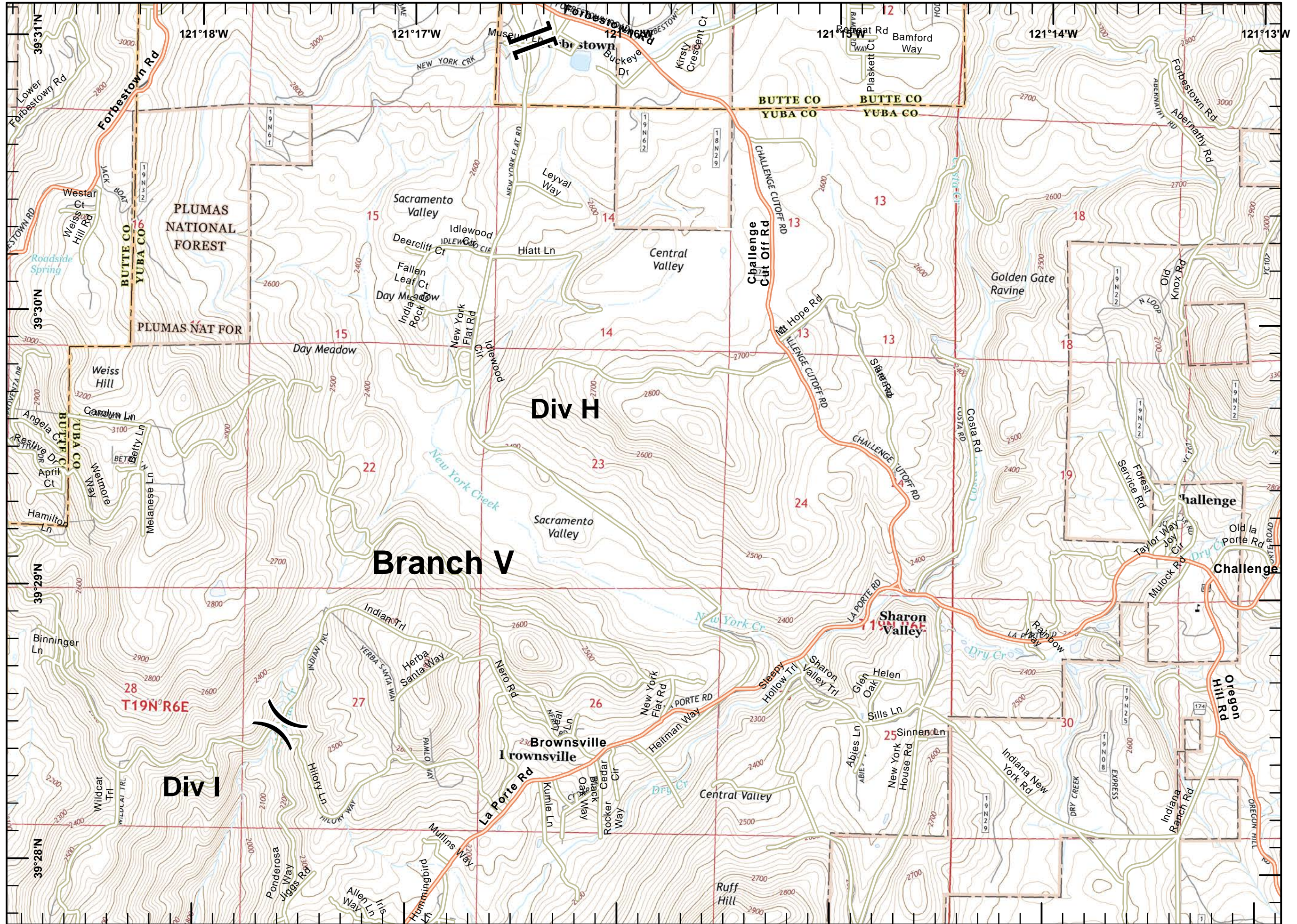


Miles  
0 0.125 0.25 0.5



1:24,000

IMT 6 GIS  
July 09, 2017  
2253



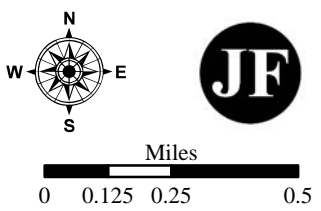


# IAP MAP

Wall Incident  
 CA-BTU-010975  
 July 10, 2017  
 0700-0700  
 NAD 83  
 Page 7 of 11

- Division
- Branch
- Drop Point
- Staging Area
- Uncontrolled Fire Edge
- Completed Line
- Completed Dozer Line

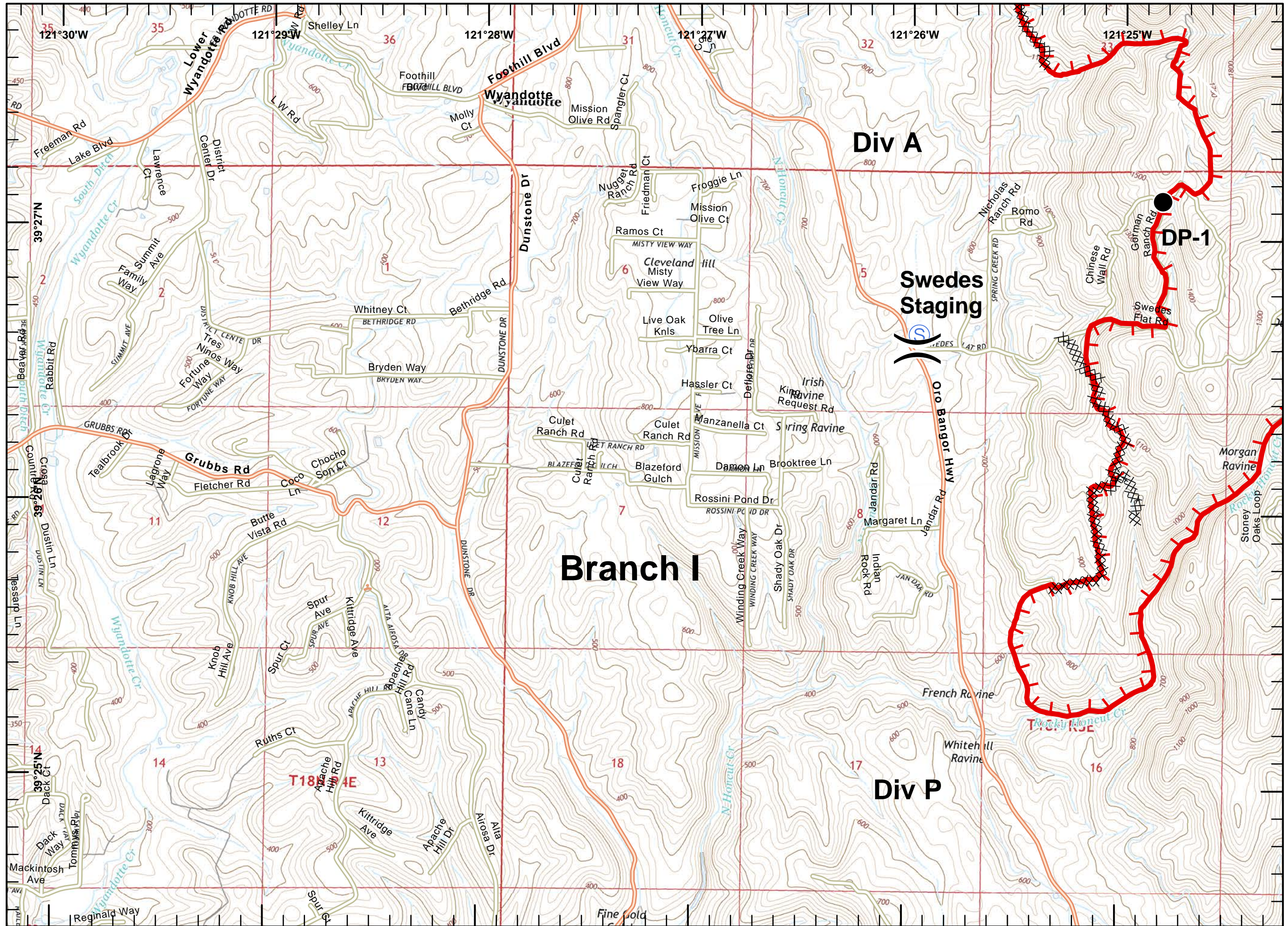
Page 1	Page 2	Page 3
Page 4	Page 5	Page 6
<b>Page 7</b>	Page 8	Page 9
Page 10	Page 11	



1:24,000



IMT 6 GIS  
 July 09, 2017  
 2254





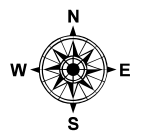


# IAP MAP

Wall Incident  
 CA-BTU-010975  
 July 10, 2017  
 0700-0700  
 NAD 83  
 Page 8 of 11

- Division
- Branch
- Drop Point
- Staging Area
- Uncontrolled Fire Edge
- Completed Line
- Completed Dozer Line

Page 1	Page 2	Page 3
Page 4	Page 5	Page 6
Page 7	Page 8	Page 9
Page 10	Page 11	

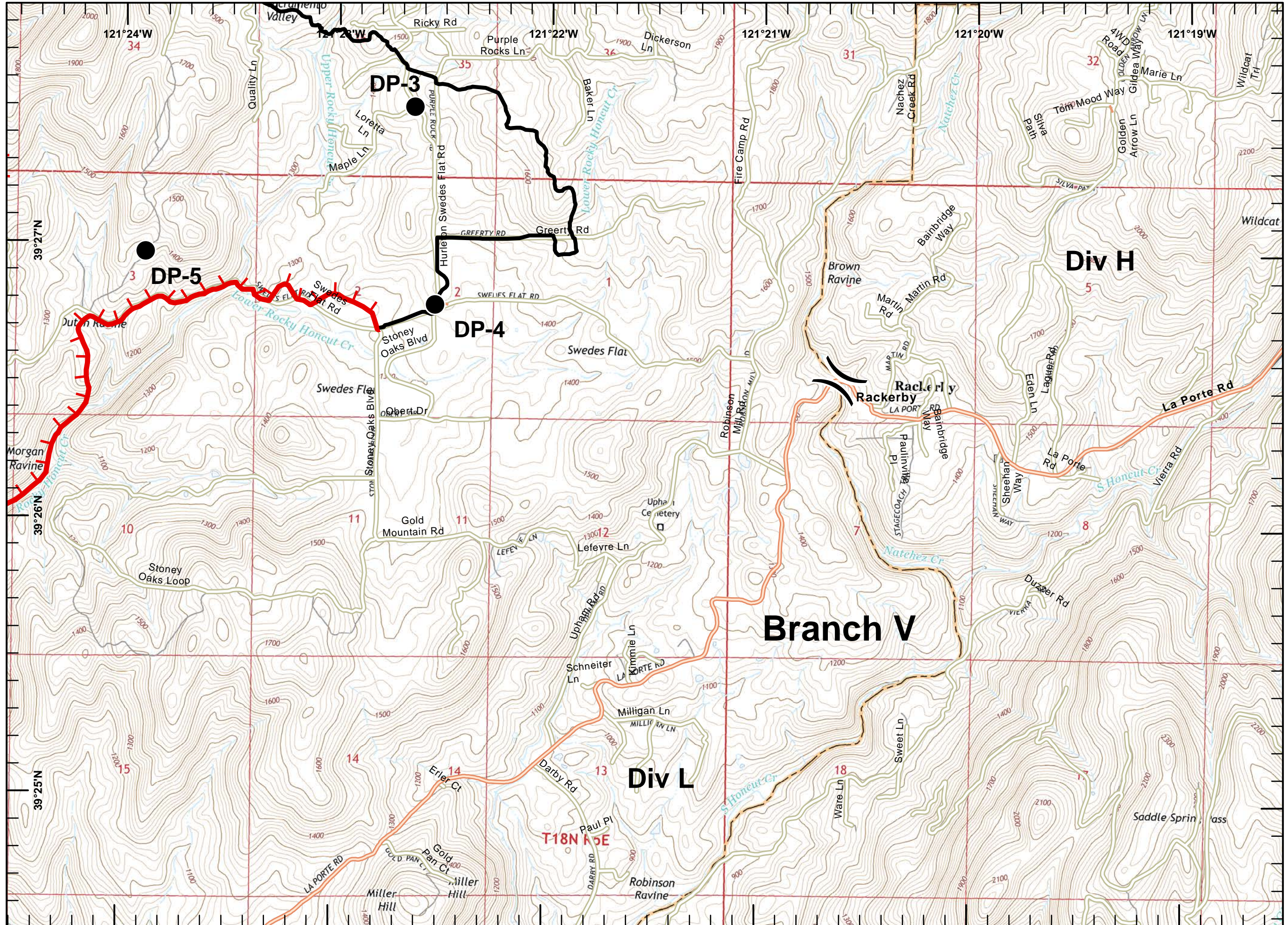


Miles  
 0 0.125 0.25 0.5



1:24,000

IMT 6 GIS  
 July 09, 2017  
 2254



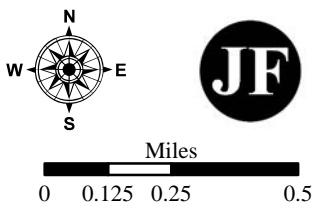


# IAP MAP

Wall Incident  
 CA-BTU-010975  
 July 10, 2017  
 0700-0700  
 NAD 83  
 Page 9 of 11

- Division
- Branch
- Drop Point
- Staging Area
- Uncontrolled Fire Edge
- Completed Line
- Completed Dozer Line

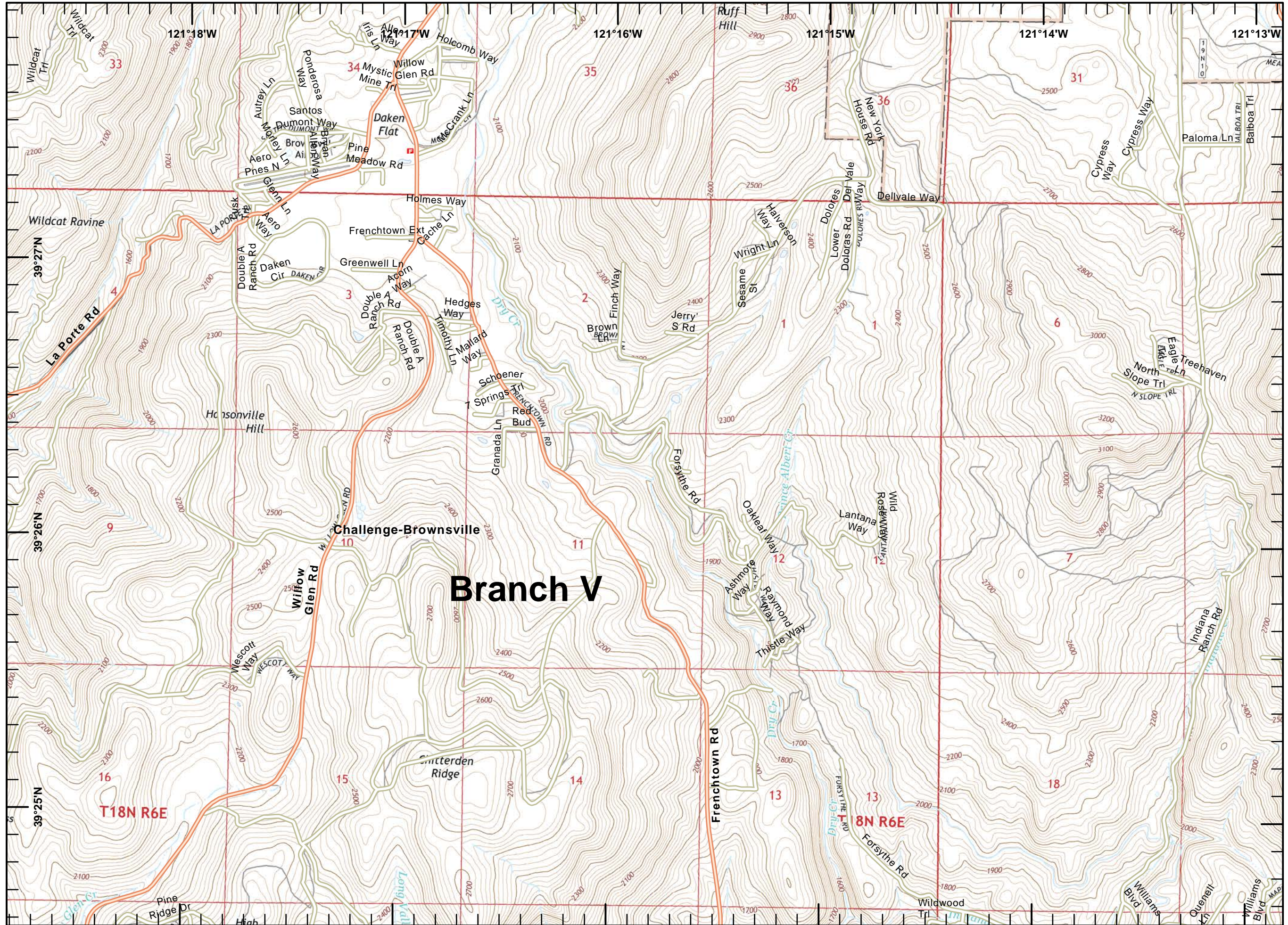
Page 1	Page 2	Page 3
Page 4	Page 5	Page 6
Page 7	Page 8	<b>Page 9</b>
Page 10	Page 11	



1:24,000



IMT 6 GIS  
 July 09, 2017  
 2254



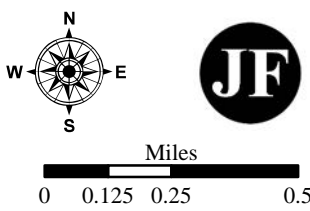


# IAP MAP

Wall Incident  
 CA-BTU-010975  
 July 10, 2017  
 0700-0700  
 NAD 83  
 Page 10 of 11

- Division
- Branch
- Drop Point
- Staging Area
- Uncontrolled Fire Edge
- Completed Line
- Completed Dozer Line

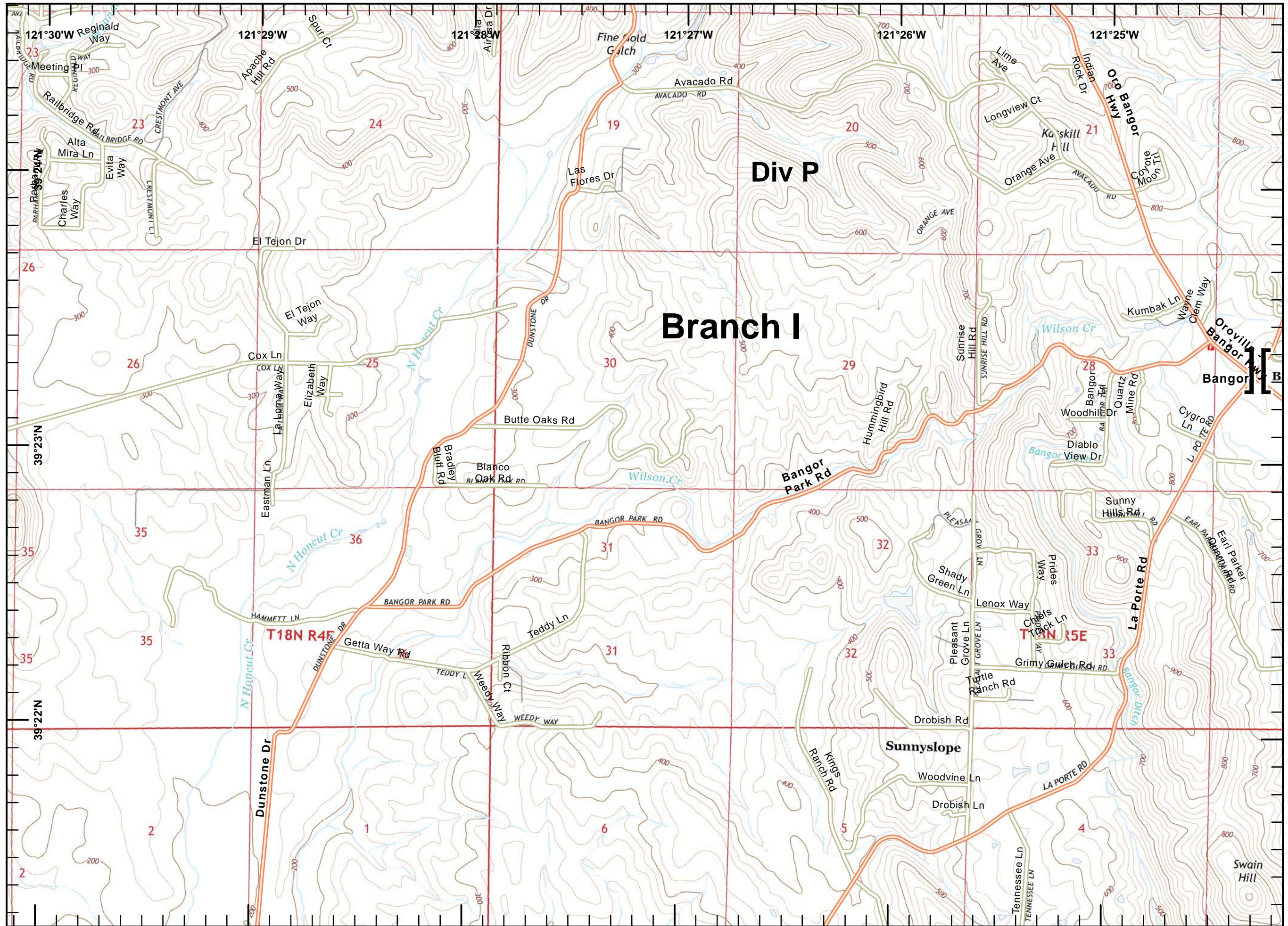
Page 1	Page 2	Page 3
Page 4	Page 5	Page 6
Page 7	Page 8	Page 9
<b>Page 10</b>	Page 11	



1:24,000



IMT 6 GIS  
 July 09, 2017  
 2254



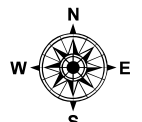


# IAP MAP

Wall Incident  
 CA-BTU-010975  
 July 10, 2017  
 0700-0700  
 NAD 83  
 Page 11 of 11

- )( Division
- [[ Branch
- Drop Point
- Ⓢ Staging Area
- Uncontrolled Fire Edge
- Completed Line
- XXXXX Completed Dozer Line

Page 1	Page 2	Page 3
Page 4	Page 5	Page 6
Page 7	Page 8	Page 9
Page 10	<b>Page 11</b>	

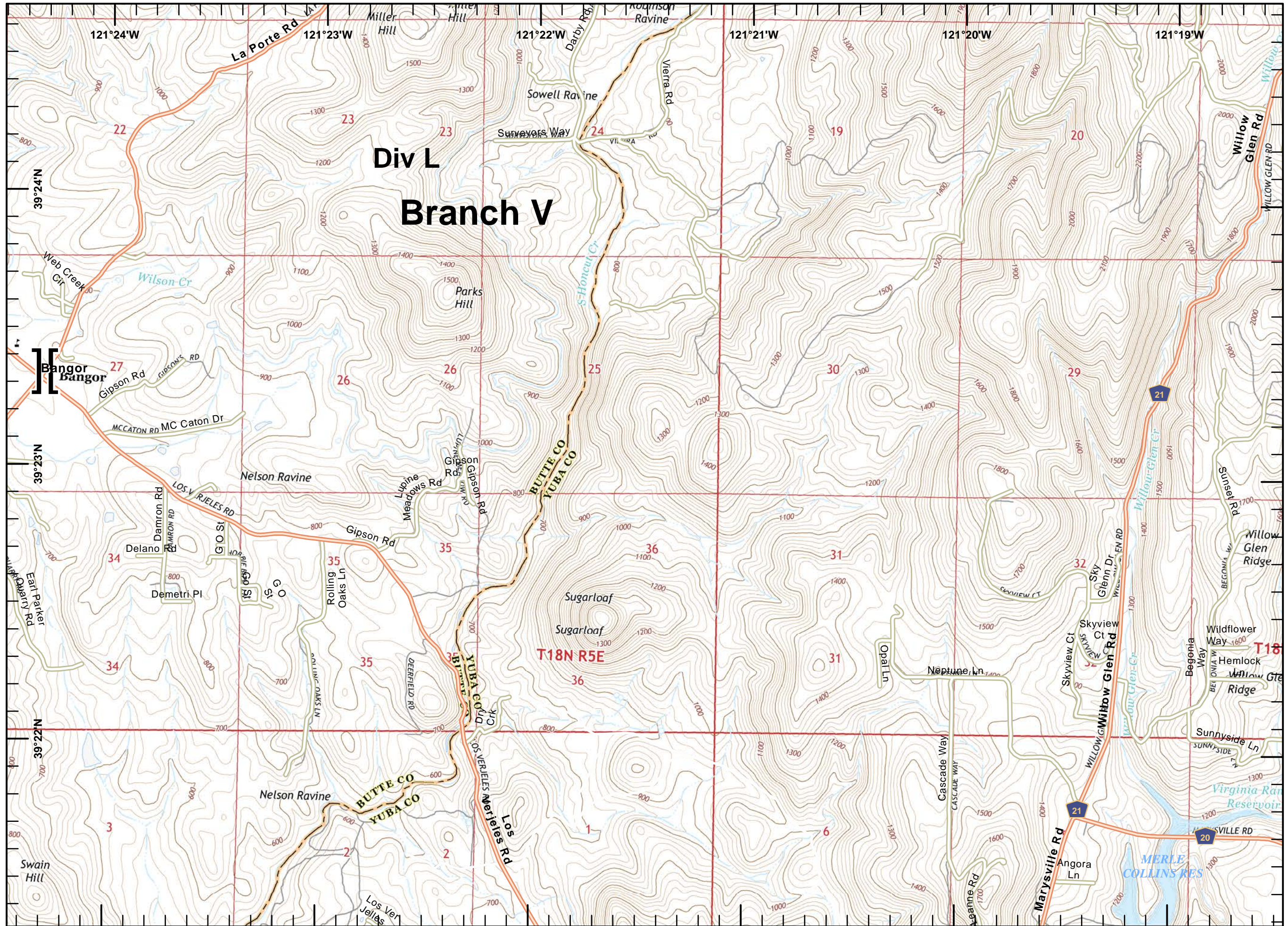


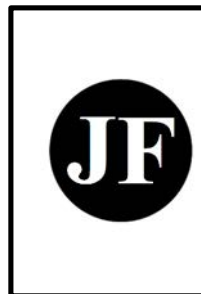
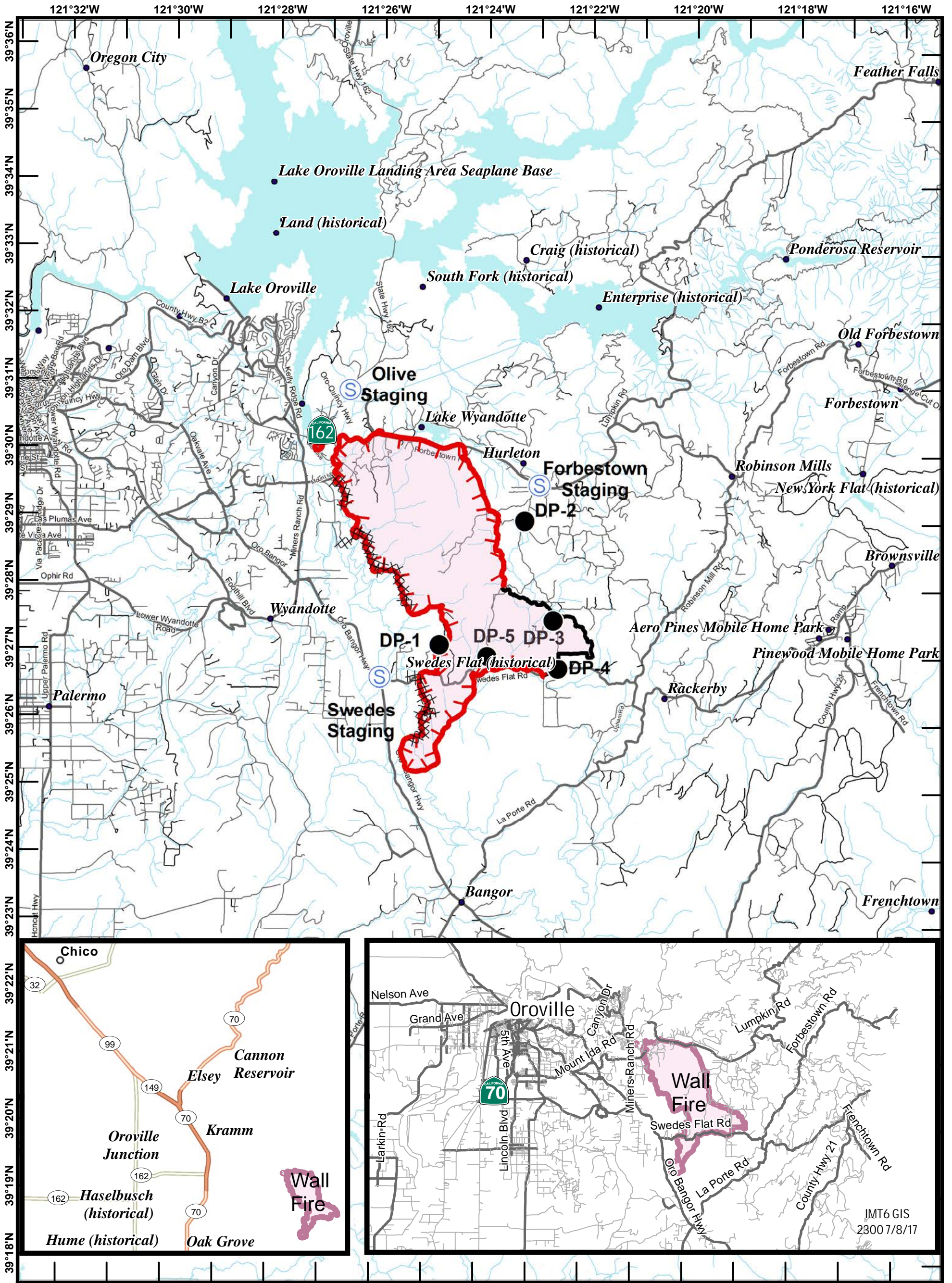
Miles  
 0 0.125 0.25 0.5



1:24,000

IMT 6 GIS  
 July 09, 2017  
 2254





Travel Map  
 Wall Incident  
 CA BTU 010975  
 July 10, 2017

