



IAP Index Map

Wall Incident

CA-BTU-010975

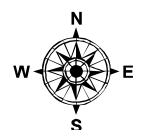
July 11, 2017

0700-0700

NAD 83

- Division
- Branch
- Drop Point
- Staging Area
- Spot Fire
- Repeater
- Uncontrolled Fire Edge
- Completed Line
- Completed Dozer Line
- Hand Line

Page 1	Page 2	Page 3
Page 4	Page 5	Page 6
Page 7	Page 8	Page 9
Page 10	Page 11	

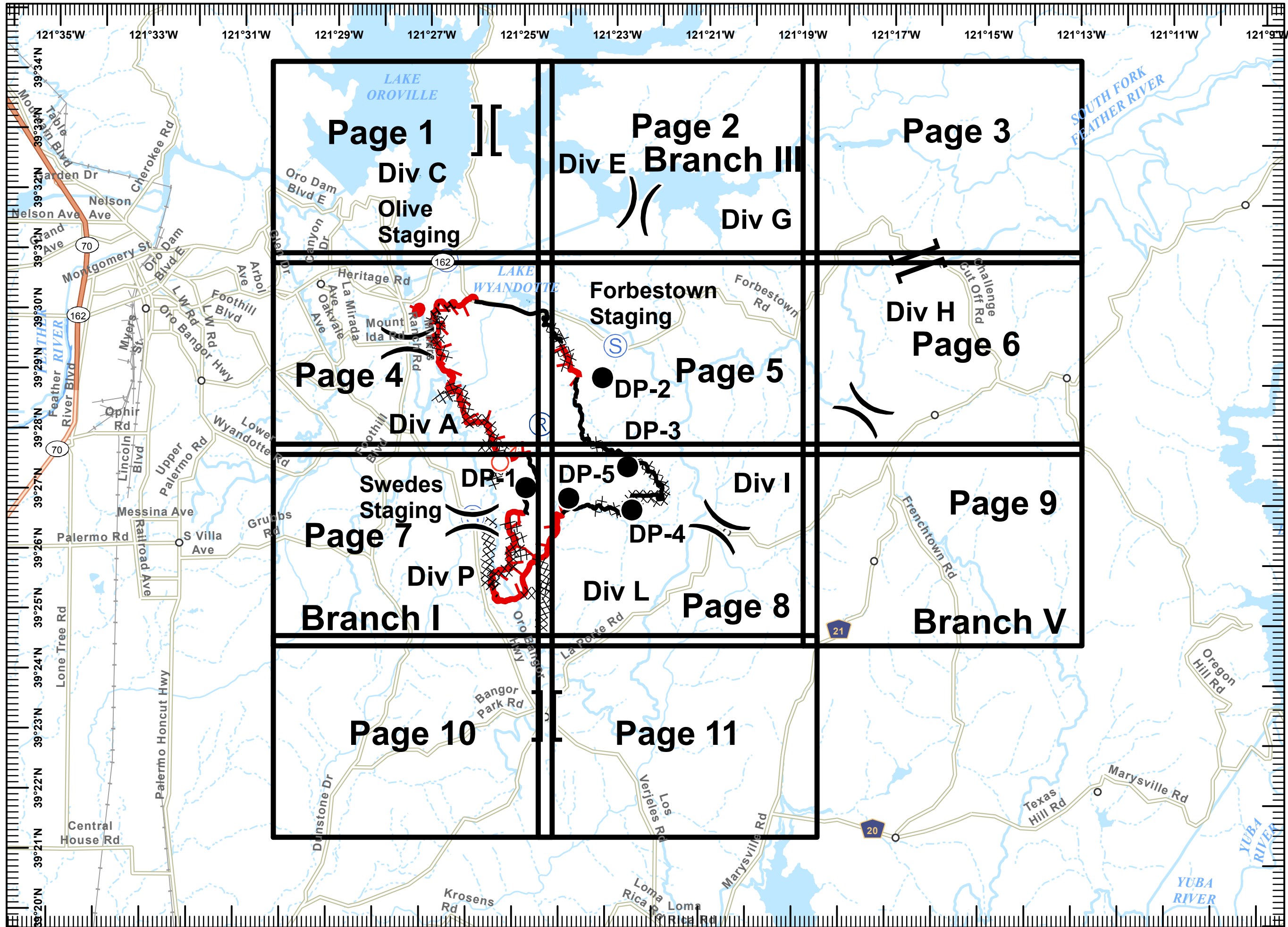


Miles
0 0.5 1 2



1:110,000

IMT 6 GIS
July 10, 2017
2247



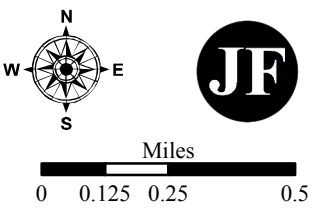


IAP MAP

Wall Incident
 CA-BTU-010975
 July 11, 2017
 0700-0700
 NAD 83
 Page 1 of 11

- Division
- Branch
- Drop Point
- Staging Area
- Spot Fire
- Repeater
- Uncontrolled Fire Edge
- Completed Line
- Completed Dozer Line
- Hand Line

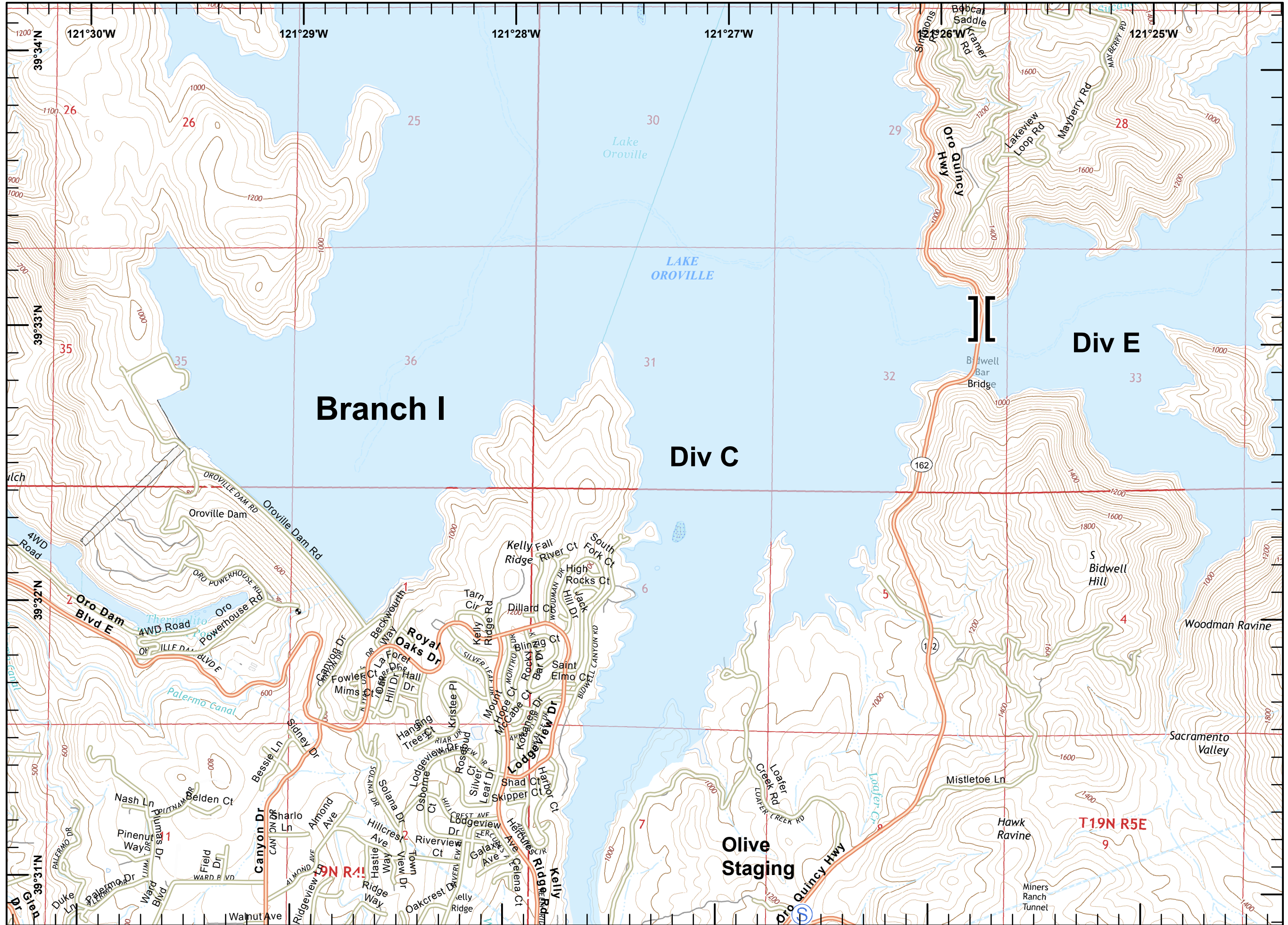
Page 1	Page 2	Page 3
Page 4	Page 5	Page 6
Page 7	Page 8	Page 9
Page 10	Page 11	



1:24,000



IMT 6 GIS
 July 10, 2017
 2239



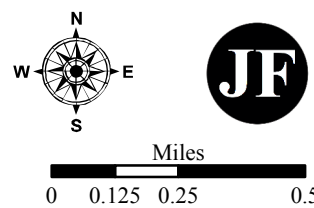


IAP MAP

Wall Incident
 CA-BTU-010975
 July 11, 2017
 0700-0700
 NAD 83
 Page 2 of 11

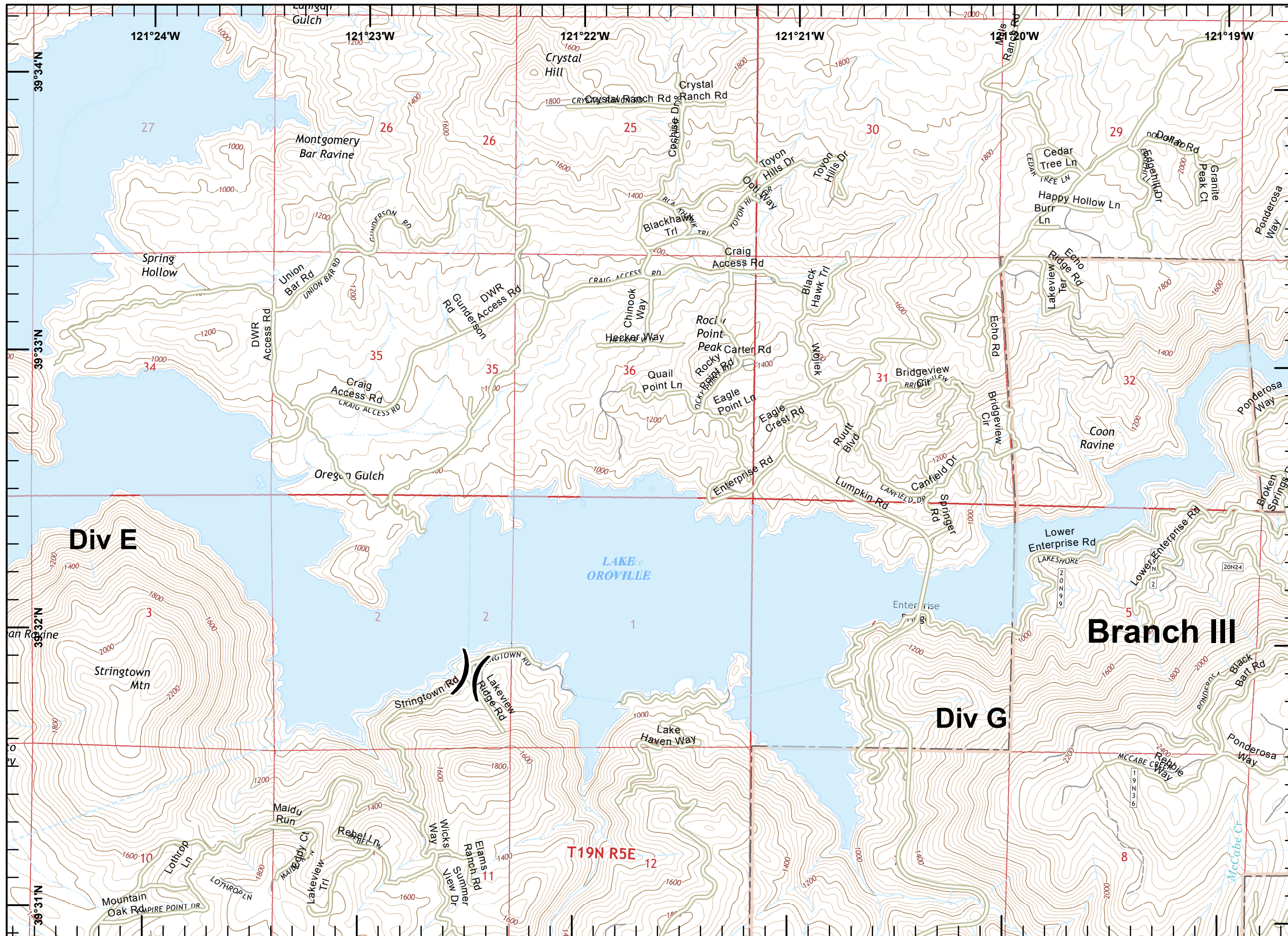
- Division
- Branch
- Drop Point
- Staging Area
- Spot Fire
- Repeater
- Uncontrolled Fire Edge
- Completed Line
- Completed Dozer Line
- Hand Line

Page 1	Page 2	Page 3
Page 4	Page 5	Page 6
Page 7	Page 8	Page 9
Page 10	Page 11	



1:24,000

IMT 6 GIS
 July 10, 2017
 2239



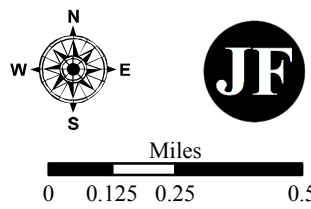


IAP MAP

Wall Incident
 CA-BTU-010975
 July 11, 2017
 0700-0700
 NAD 83
 Page 3 of 11

- Division
- Branch
- Drop Point
- Staging Area
- Spot Fire
- Repeater
- Uncontrolled Fire Edge
- Completed Line
- Completed Dozer Line
- Hand Line

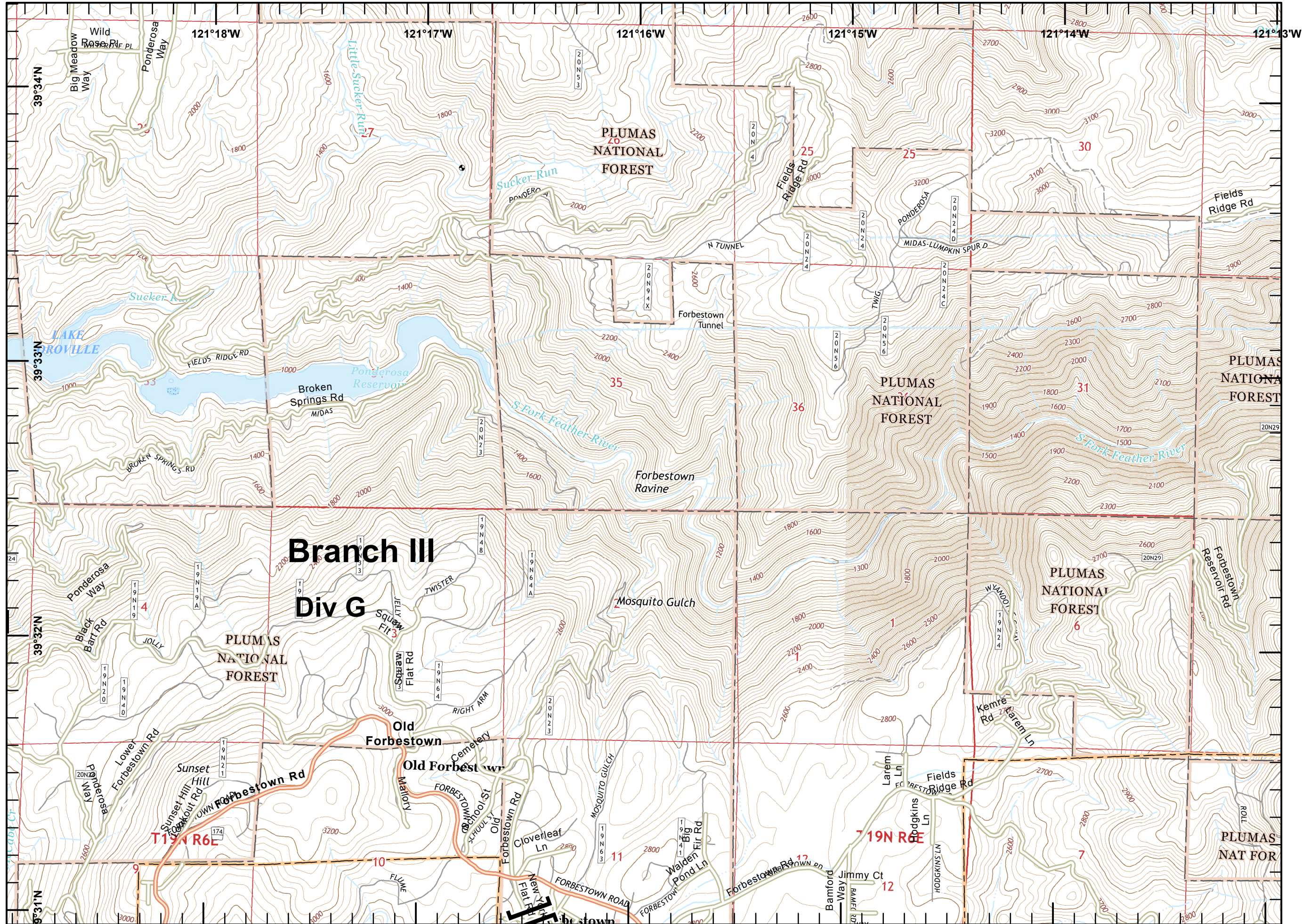
Page 1	Page 2	Page 3
Page 4	Page 5	Page 6
Page 7	Page 8	Page 9
Page 10	Page 11	



1:24,000



IMT 6 GIS
 July 10, 2017
 2239



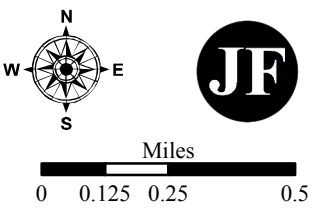


IAP MAP

Wall Incident
 CA-BTU-010975
 July 11, 2017
 0700-0700
 NAD 83
 Page 4 of 11

- Division
- Branch
- Drop Point
- Staging Area
- Spot Fire
- Repeater
- Uncontrolled Fire Edge
- Completed Line
- Completed Dozer Line
- Hand Line

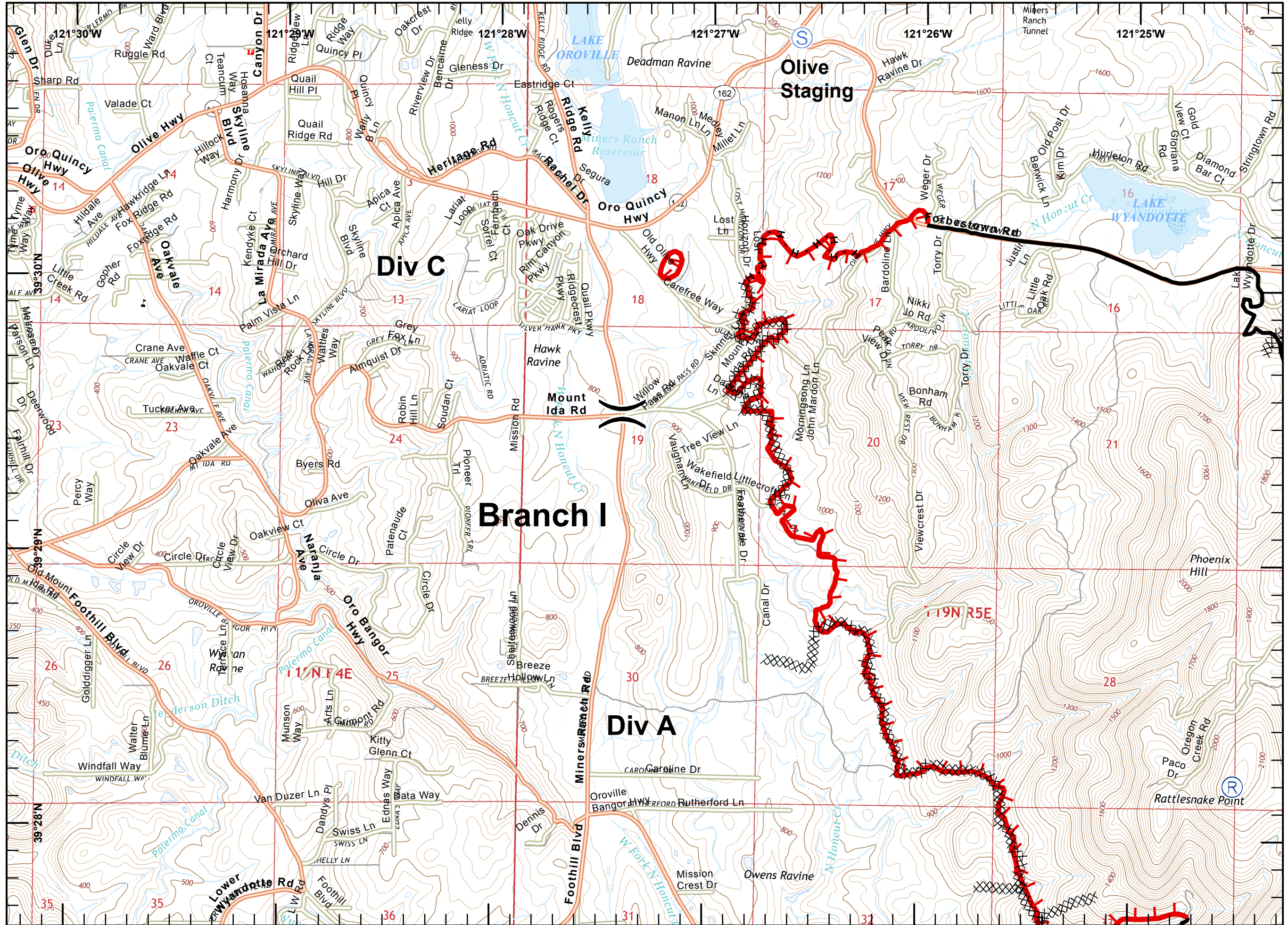
Page 1	Page 2	Page 3
Page 4	Page 5	Page 6
Page 7	Page 8	Page 9
Page 10	Page 11	



1:24,000



IMT 6 GIS
 July 10, 2017
 2239



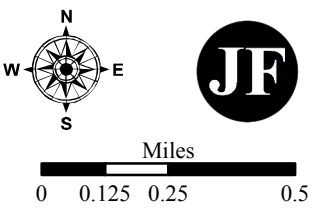


IAP MAP

Wall Incident
 CA-BTU-010975
 July 11, 2017
 0700-0700
 NAD 83
 Page 5 of 11

- Division
- Branch
- Drop Point
- Staging Area
- Spot Fire
- Repeater
- Uncontrolled Fire Edge
- Completed Line
- Completed Dozer Line
- Hand Line

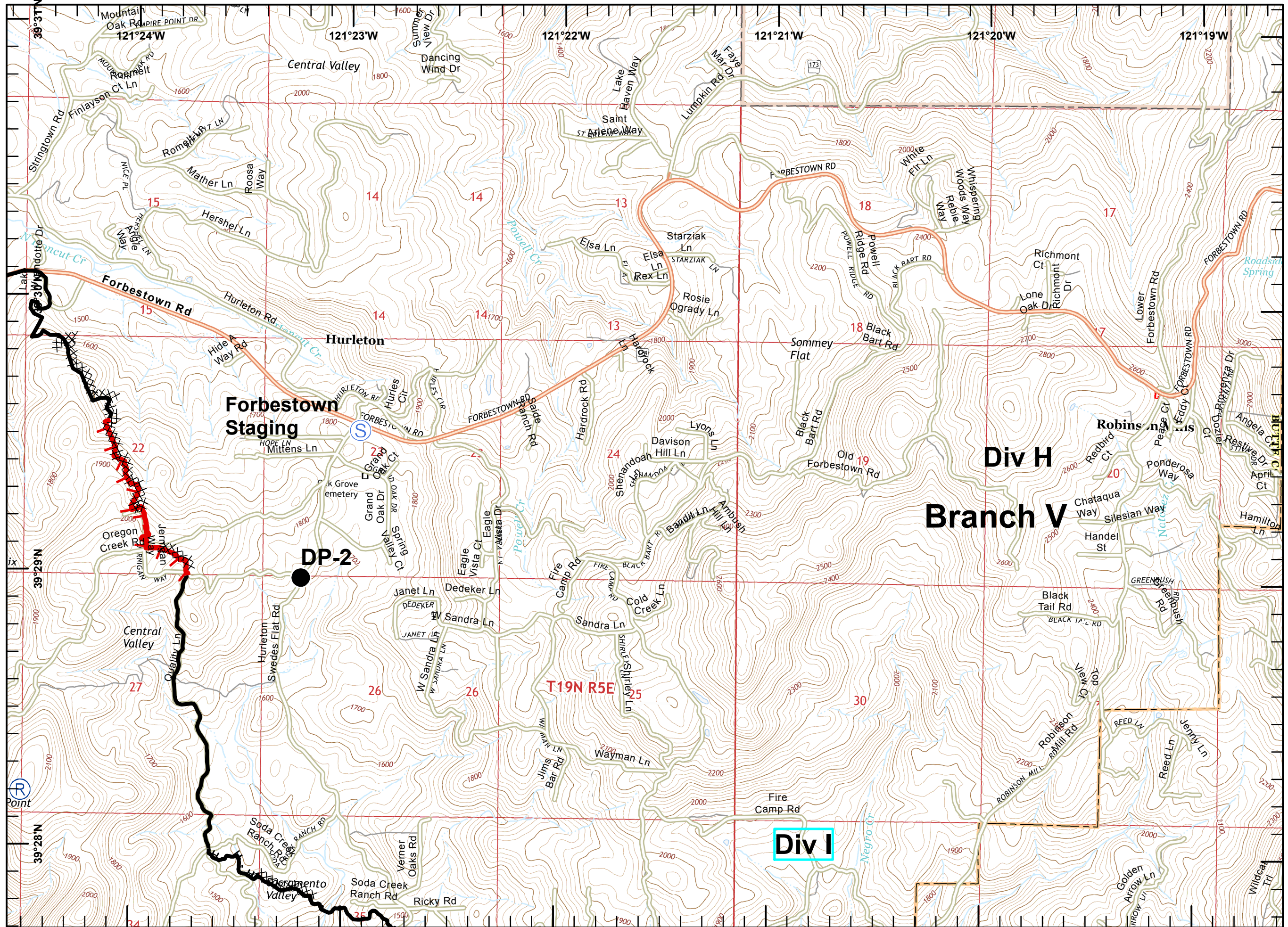
Page 1	Page 2	Page 3
Page 4	Page 5	Page 6
Page 7	Page 8	Page 9
Page 10	Page 11	



1:24,000



IMT 6 GIS
 July 10, 2017
 2239



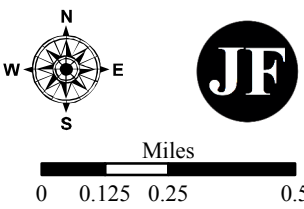


IAP MAP

Wall Incident
 CA-BTU-010975
 July 11, 2017
 0700-0700
 NAD 83
 Page 6 of 11

- Division
- Branch
- Drop Point
- Staging Area
- Spot Fire
- Repeater
- Uncontrolled Fire Edge
- Completed Line
- Completed Dozer Line
- Hand Line

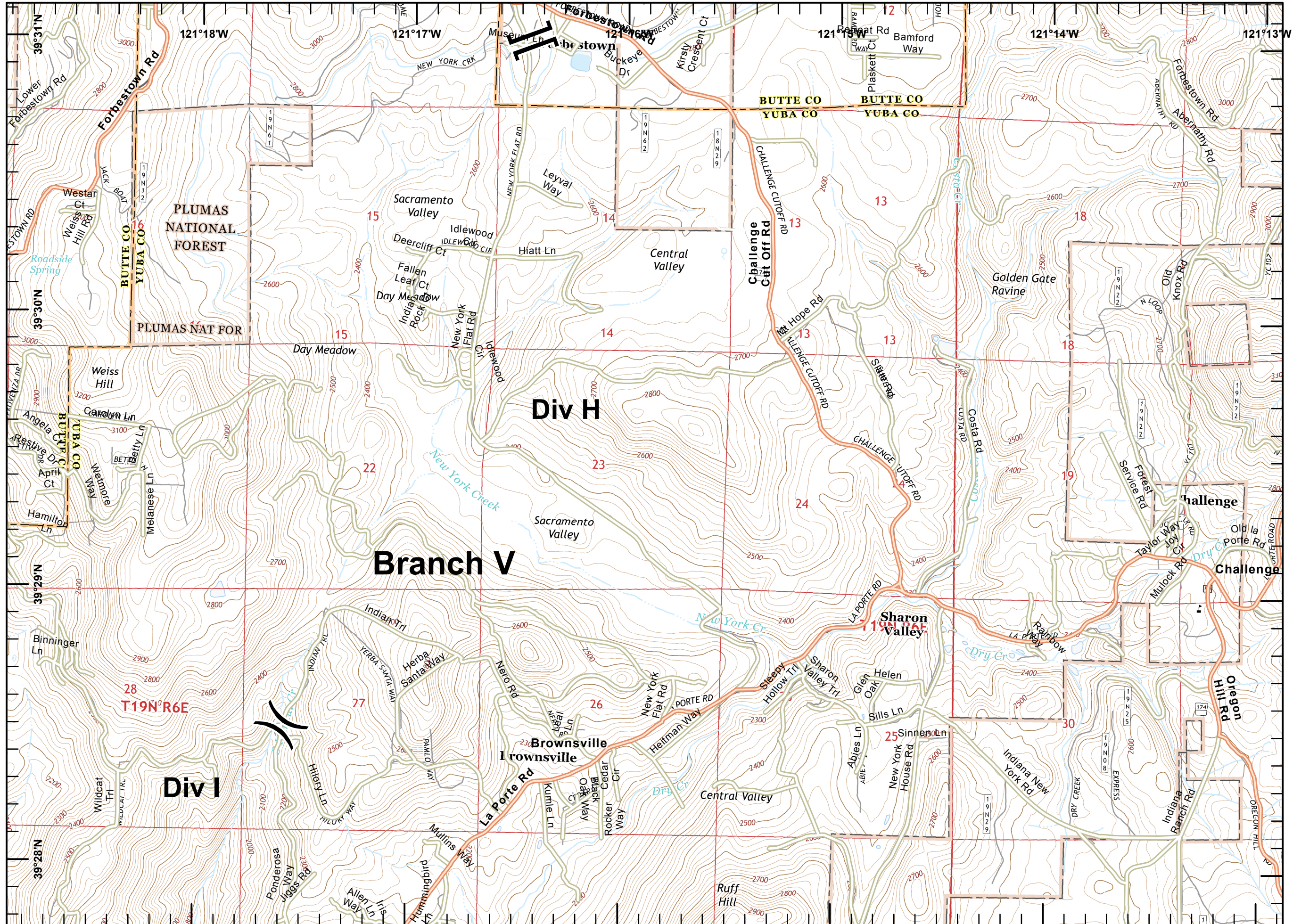
Page 1	Page 2	Page 3
Page 4	Page 5	Page 6
Page 7	Page 8	Page 9
Page 10	Page 11	



1:24,000



IMT 6 GIS
 July 10, 2017
 2239



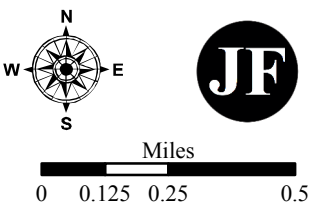


IAP MAP

Wall Incident
 CA-BTU-010975
 July 11, 2017
 0700-0700
 NAD 83
 Page 7 of 11

- Division
- Branch
- Drop Point
- Staging Area
- Spot Fire
- Repeater
- Uncontrolled Fire Edge
- Completed Line
- Completed Dozer Line
- Hand Line

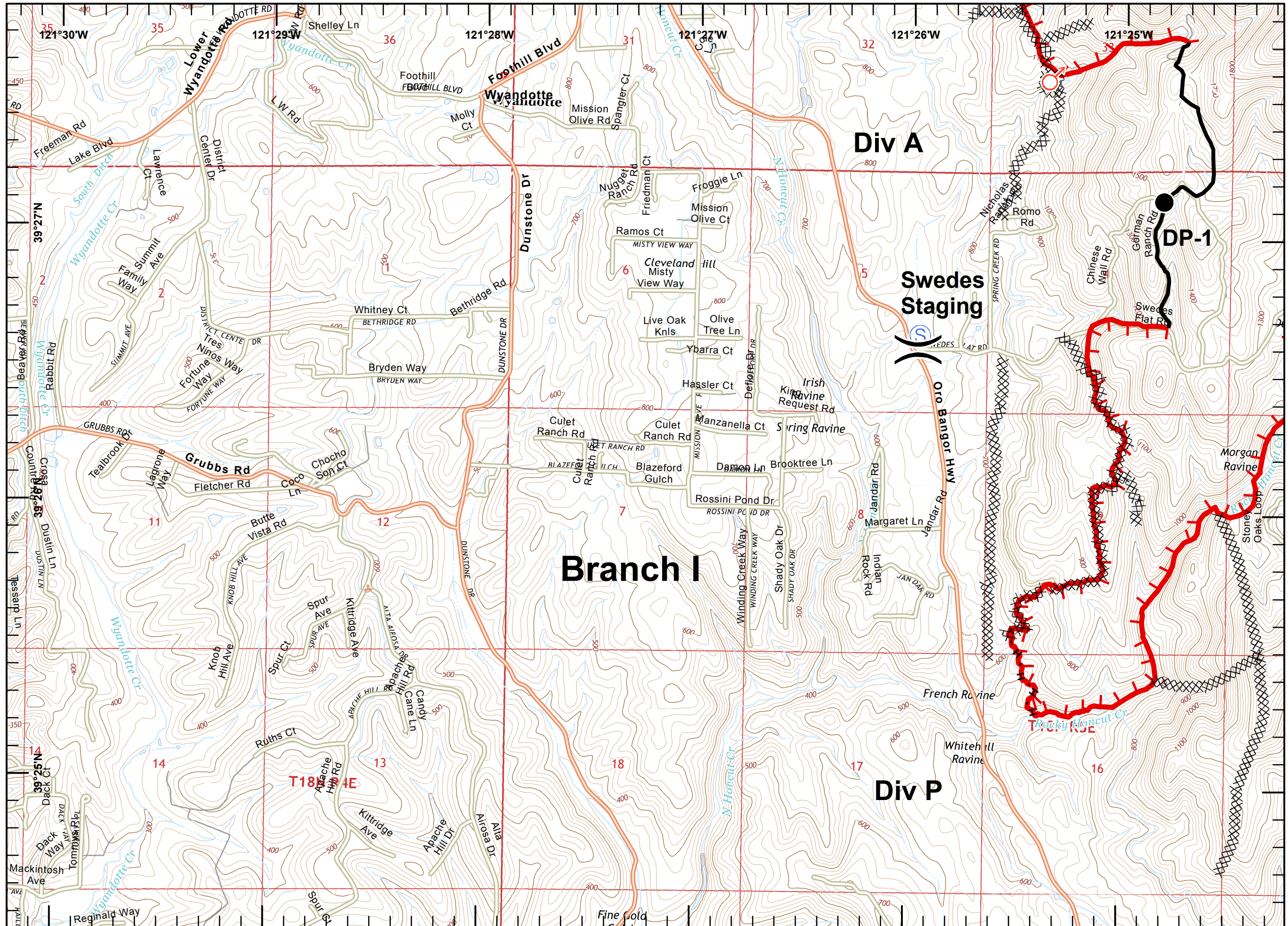
Page 1	Page 2	Page 3
Page 4	Page 5	Page 6
Page 7	Page 8	Page 9
Page 10	Page 11	



1:24,000



IMT 6 GIS
 July 10, 2017
 2239



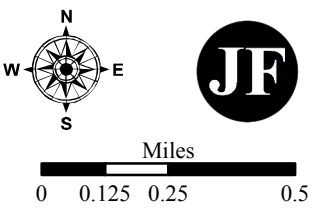


IAP MAP

Wall Incident
 CA-BTU-010975
 July 11, 2017
 0700-0700
 NAD 83
 Page 8 of 11

- Division
- Branch
- Drop Point
- Staging Area
- Spot Fire
- Repeater
- Uncontrolled Fire Edge
- Completed Line
- Completed Dozer Line
- Hand Line

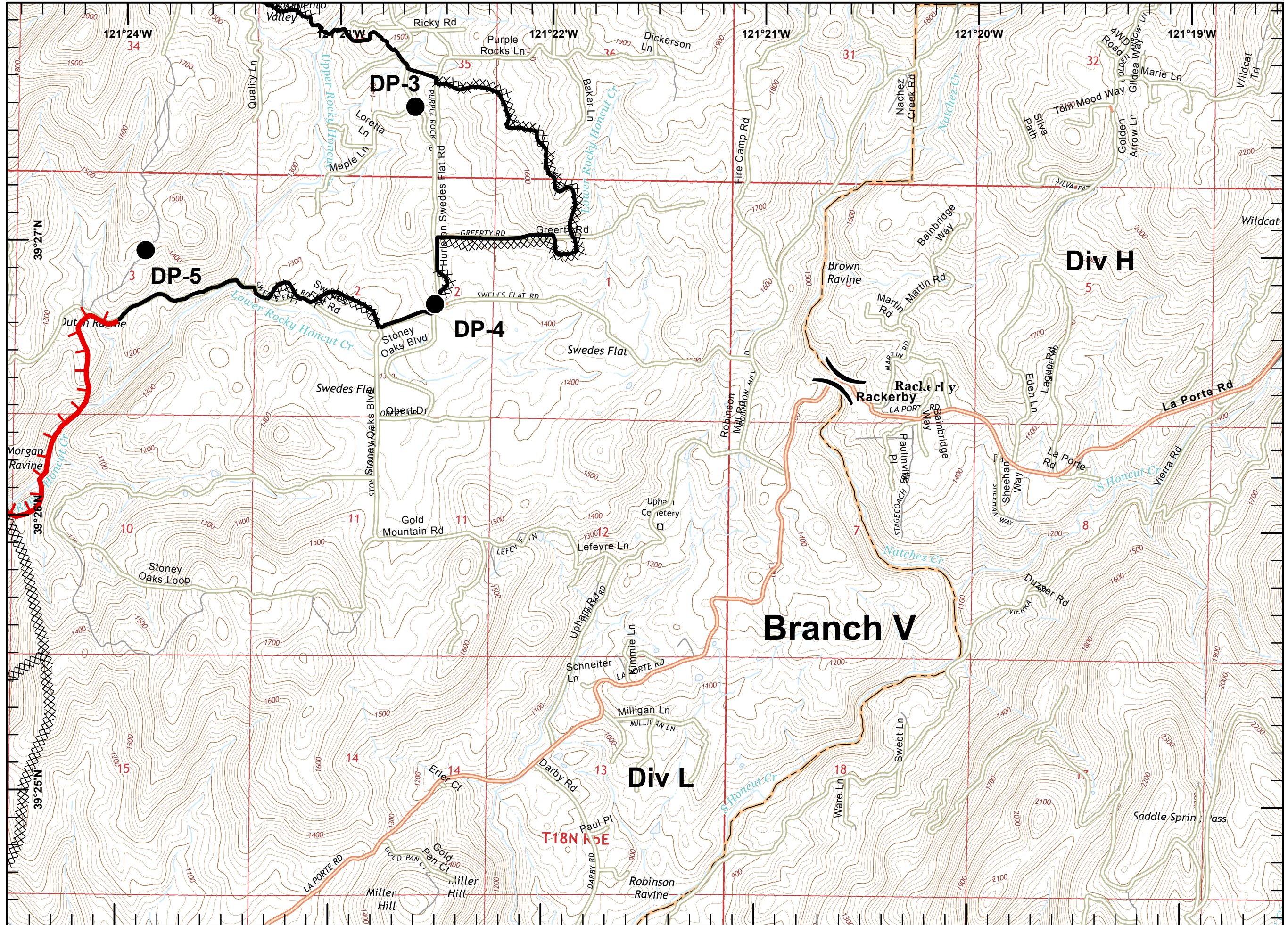
Page 1	Page 2	Page 3
Page 4	Page 5	Page 6
Page 7	Page 8	Page 9
Page 10	Page 11	



1:24,000



IMT 6 GIS
 July 10, 2017
 2239



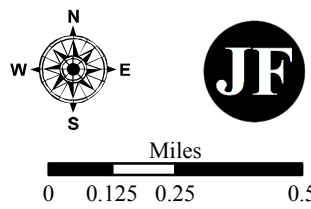


IAP MAP

Wall Incident
 CA-BTU-010975
 July 11, 2017
 0700-0700
 NAD 83
 Page 9 of 11

- Division
- Branch
- Drop Point
- Staging Area
- Spot Fire
- Repeater
- Uncontrolled Fire Edge
- Completed Line
- Completed Dozer Line
- Hand Line

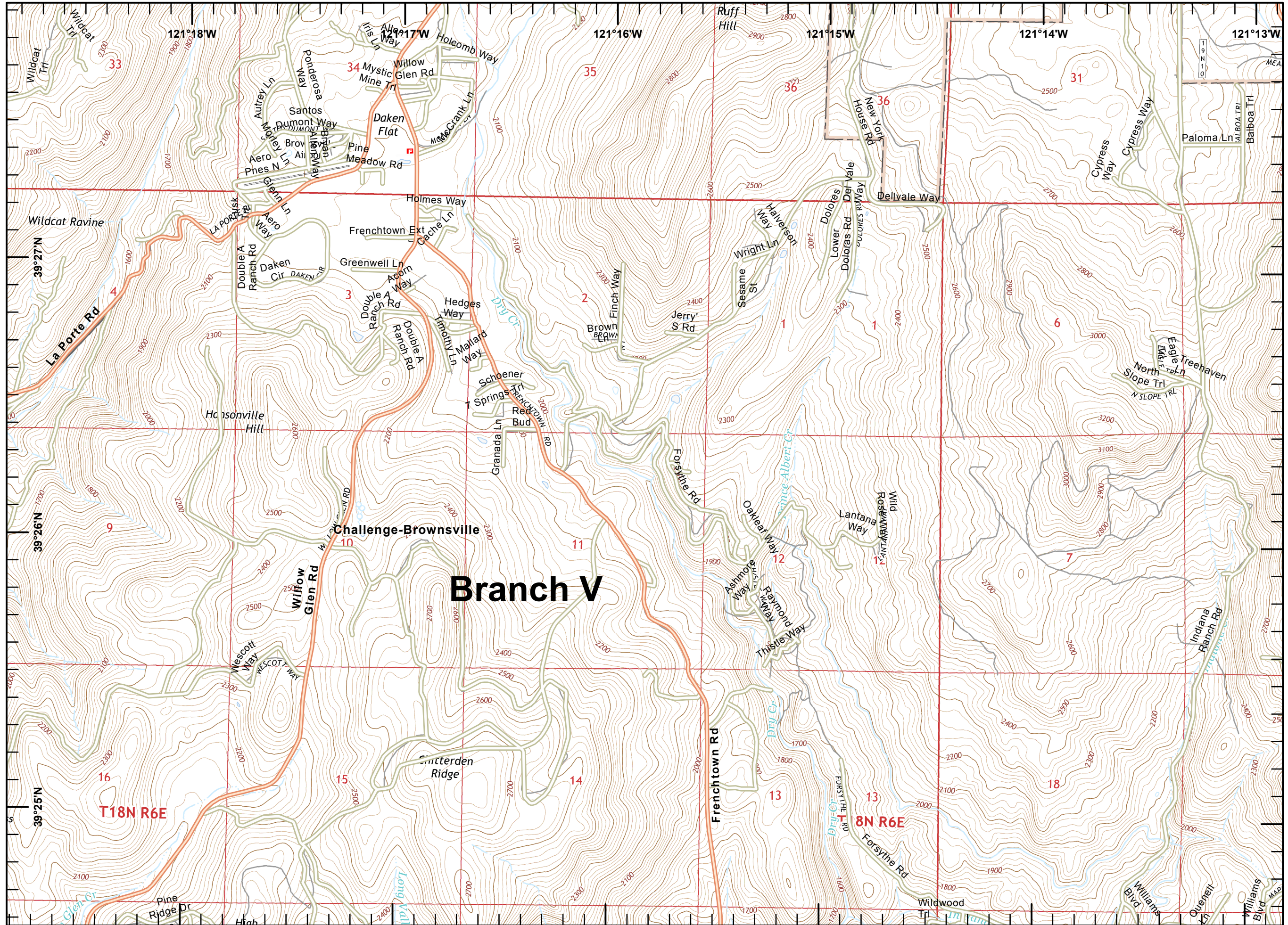
Page 1	Page 2	Page 3
Page 4	Page 5	Page 6
Page 7	Page 8	Page 9
Page 10	Page 11	



1:24,000



IMT 6 GIS
 July 10, 2017
 2239



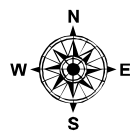


IAP MAP

Wall Incident
 CA-BTU-010975
 July 11, 2017
 0700-0700
 NAD 83
 Page 10 of 11

- Division
- Branch
- Drop Point
- Staging Area
- Spot Fire
- Repeater
- Uncontrolled Fire Edge
- Completed Line
- Completed Dozer Line
- Hand Line

Page 1	Page 2	Page 3
Page 4	Page 5	Page 6
Page 7	Page 8	Page 9
Page 10	Page 11	

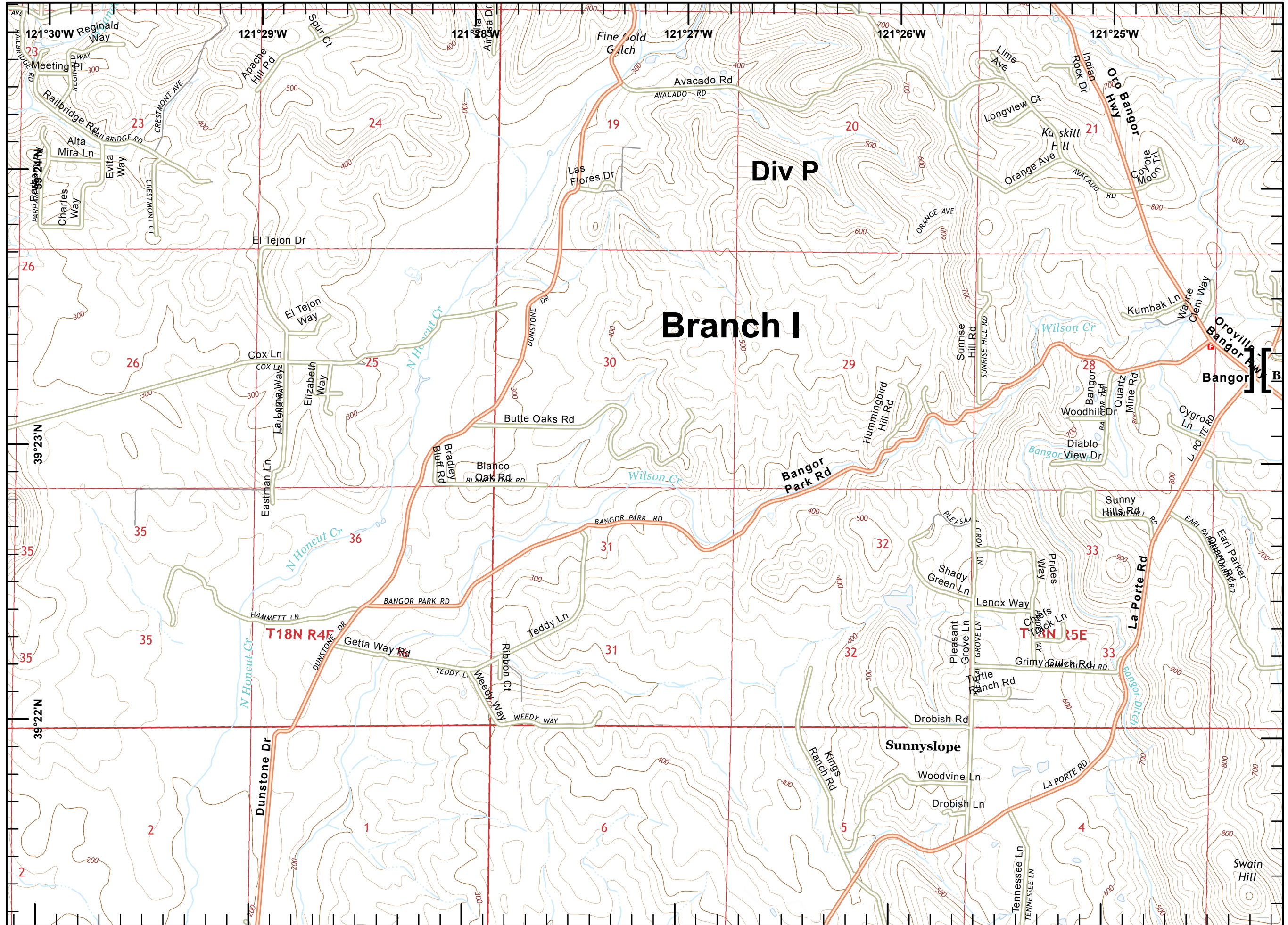


Miles
 0 0.125 0.25 0.5



1:24,000

IMT 6 GIS
 July 10, 2017
 2239



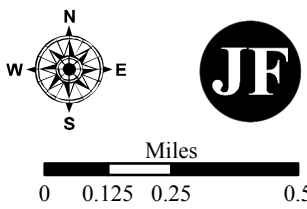


IAP MAP

Wall Incident
 CA-BTU-010975
 July 11, 2017
 0700-0700
 NAD 83
 Page 11 of 11

- Division
- Branch
- Drop Point
- Staging Area
- Spot Fire
- Repeater
- Uncontrolled Fire Edge
- Completed Line
- Completed Dozer Line
- Hand Line

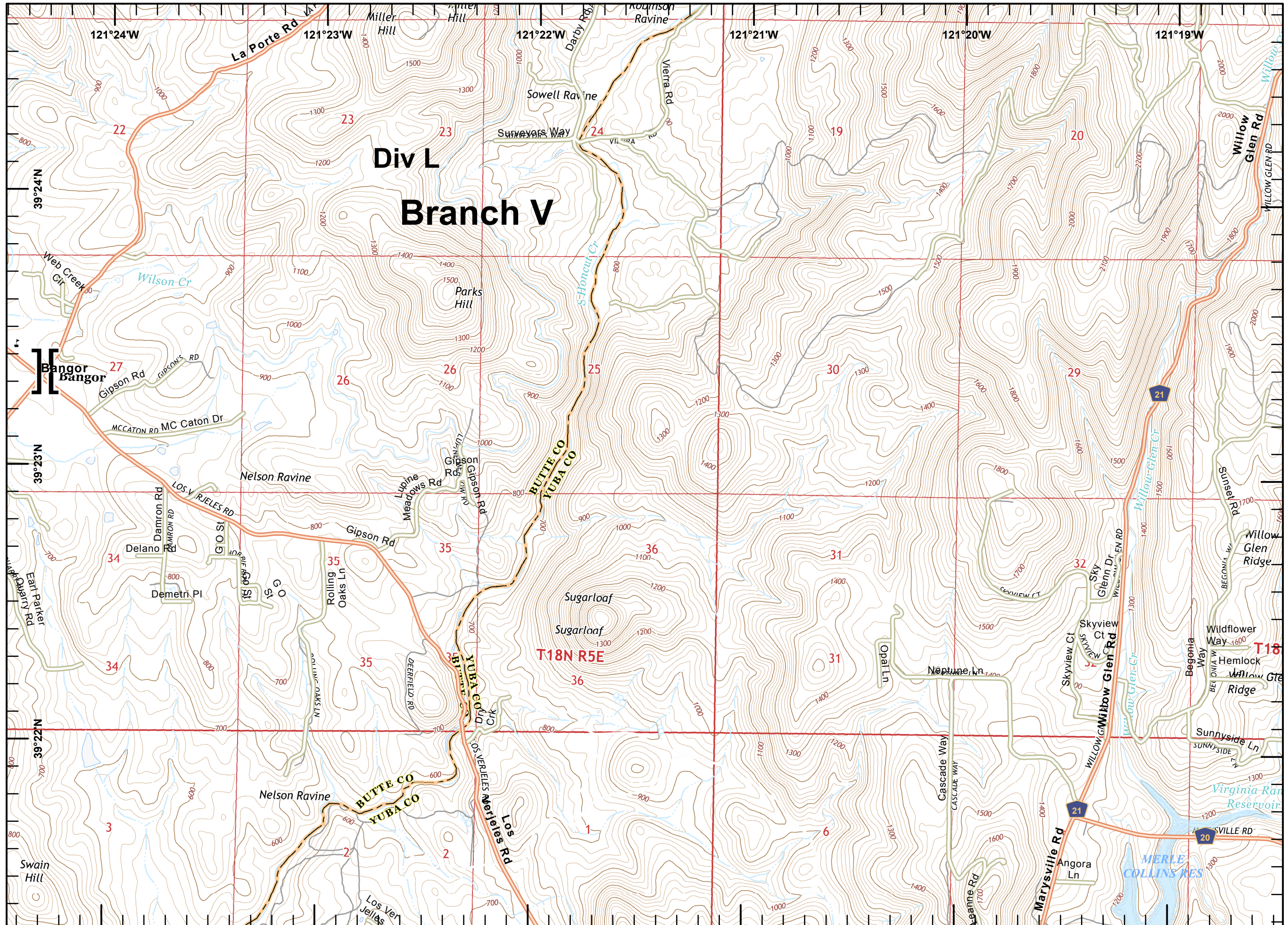
Page 1	Page 2	Page 3
Page 4	Page 5	Page 6
Page 7	Page 8	Page 9
Page 10	Page 11	

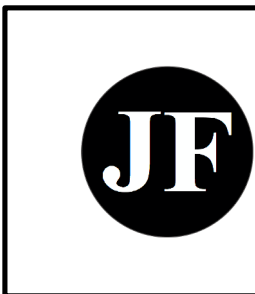
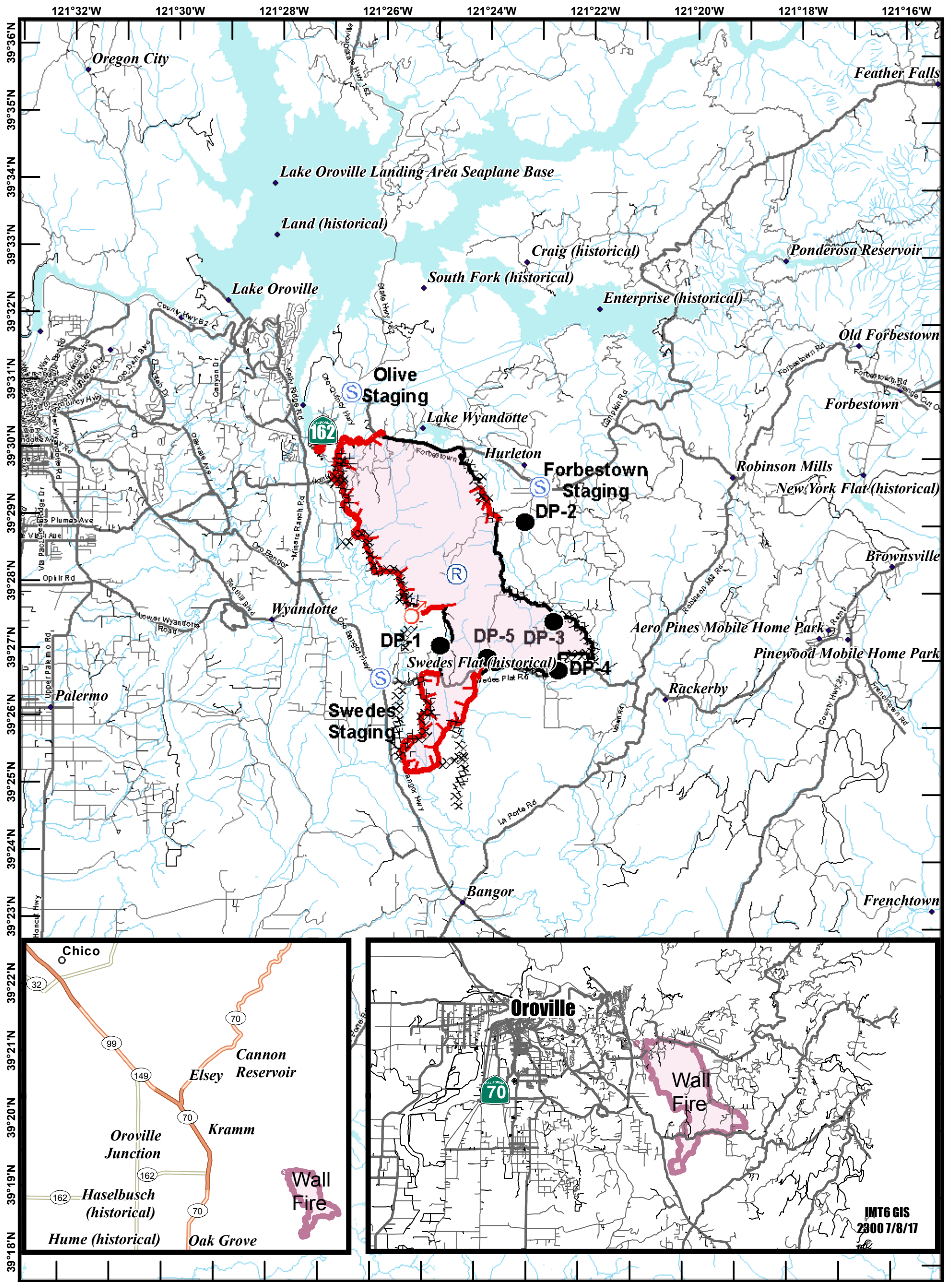


1:24,000



IMT 6 GIS
 July 10, 2017
 2240





Travel Map
Wall Incident
CA BTU 010975
July 11, 2017

