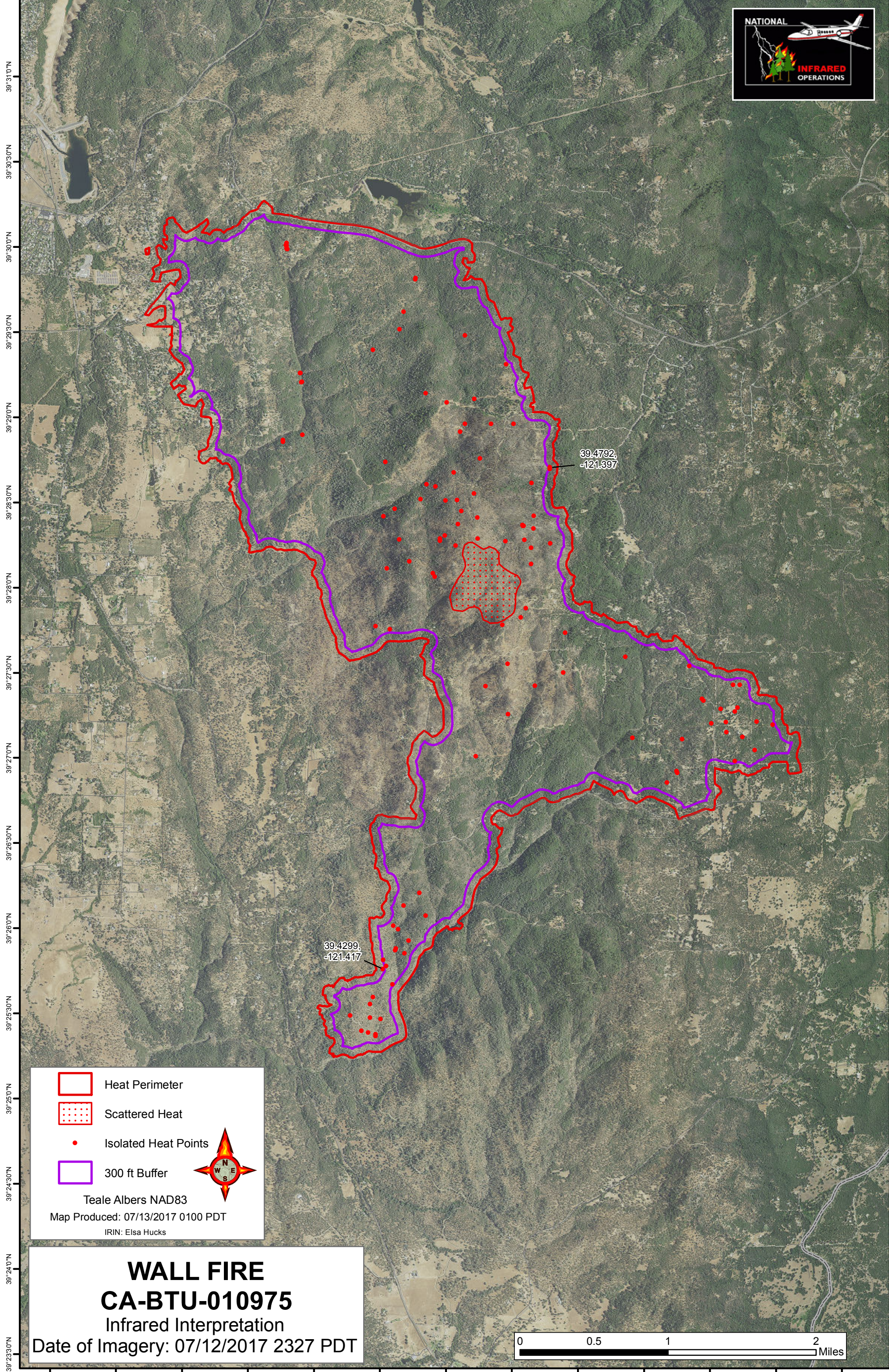






121°27'30"W 121°27'0"W 121°26'30"W 121°26'0"W 121°25'30"W 121°25'0"W 121°24'30"W 121°24'0"W 121°23'30"W 121°23'0"W 121°22'30"W 121°22'0"W 121°21'30"W




39°31'0"N
39°30'30"N
39°30'0"N
39°29'30"N
39°29'0"N
39°28'30"N
39°28'0"N
39°27'30"N
39°27'0"N
39°26'30"N
39°26'0"N
39°25'30"N
39°25'0"N
39°24'30"N
39°24'0"N
39°23'30"N

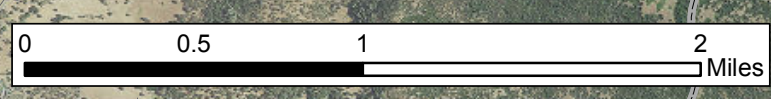
39°31'30"N
39°31'0"N
39°30'30"N
39°30'0"N
39°29'30"N
39°29'0"N
39°28'30"N
39°28'0"N
39°27'30"N
39°27'0"N
39°26'30"N
39°26'0"N
39°25'30"N
39°25'0"N
39°24'30"N
39°24'0"N
39°23'30"N

-  Heat Perimeter
-  Scattered Heat
-  Isolated Heat Points
-  300 ft Buffer

Teale Albers NAD83
Map Produced: 07/13/2017 0100 PDT
IRIN: Elsa Hucks



WALL FIRE
CA-BTU-010975
 Infrared Interpretation
 Date of Imagery: 07/12/2017 2327 PDT



121°27'30"W 121°27'0"W 121°26'30"W 121°26'0"W 121°25'30"W 121°25'0"W 121°24'30"W 121°24'0"W 121°23'30"W 121°23'0"W 121°22'30"W 121°22'0"W 121°21'30"W