

Ponderosa INCIDENT CA-BTU-13737

INCIDENT ACTION PLAN



OPERATIONAL PERIOD

9/1/2017 0700

to

9/2/2017 0700



INCIDENT OBJECTIVES (ICS 202)

1. Incident Name: Ponderosa	2. Operational Period:	Date From: 9/1/2017	Date To: 9/2/2017	
		Time From: 0700	Time To: 0700	

3. Objective(s):

Management Objectives

- Provide for emergency personnel and public safety at all times.
- Protect property, improvements, and infrastructure.
- Ensure coordinated, timely and accurate release of public information.
- Foster and maintain relationships with all cooperators and stakeholders.
- Protect economic, natural, cultural and heritage resources.
- Maintain fiscal accountability and keep costs commensurate with values at risk.

Control Objectives

- Keep the fire North of the South Fork of the Feather River.
- Keep the fire South of the Middle Fork of the Feather River.
- Keep the fire East of Enterprise Boat / Craig Access Road.
- Keep the fire West of Yuba County.

General Situational Awareness:

Steep and rugged terrain, critically dry and receptive fuel beds, active area for fire history. Maintain LCES, stay hydrated and be aware of mine shafts.

5. Site Safety Plan Required? Yes No

Approved Site Safety Plan(s) Located at:

6. Incident Action Plan


<input checked="" type="checkbox"/> ICS 203	<input checked="" type="checkbox"/> ICS 215A	<input type="checkbox"/> Phone List	<input type="checkbox"/> Fire Suppression Repair Plan
<input checked="" type="checkbox"/> ICS 204	<input checked="" type="checkbox"/> ICS 220	<input checked="" type="checkbox"/> Training Message	<input checked="" type="checkbox"/> Public Information Message
<input checked="" type="checkbox"/> ICS 205	<input checked="" type="checkbox"/> Incident Map	<input checked="" type="checkbox"/> Travel Map	<input type="checkbox"/>
<input checked="" type="checkbox"/> ICS 206	<input checked="" type="checkbox"/> Weather Forecast	<input type="checkbox"/> Demob Plan	<input type="checkbox"/>
<input checked="" type="checkbox"/> ICS 208	<input checked="" type="checkbox"/> Fire Behavior	<input checked="" type="checkbox"/> Finance Message	<input checked="" type="checkbox"/> ICS 214

7. Prepared By: Andy Murphy Position/Title: PSC Signature:

8. Approved by Deputy Incident Commander: Ron Myers Signature:

ICS 202

ORGANIZATION ASSIGNMENT LIST (ICS 203)

1. Incident Name: Ponderosa		2. Operational Period: Date From: 9/1/2017 Time From: 0700		Date To: 9/2/2017 Time To: 0700	
3. Incident Commander(s) and Command Staff:			7. Operation Section:		
IC/UC's	Glenn Patterson	Chief	Charlie Blankenheim		
Deputy	Ron Myers	Deputy	Mike Inman		
Safety Officer	Steve Walker / Barry Owens (T)	Night Ops	John Messina		
Information Officer	Ron Oatman / Jeremy Rahn	Staging Area	Lumpkin	Kris Garayalde	
Liaison Officer	Mike Martin / Jeff Johnson (T)	Branch	I	Marshall Turbeville / Louis Ermigarat (T)	
LE Liaison Officer	John McCammon / Kevin Pack	Division/Group	A	Dave Logan / Joseph Walton (T)	
		Division/Group	P	Brandon Lanning / Nick Wallingford (T)	
		Division/Group	Q	Bo Lee	
4. Agency/Organization Representatives:					
Agency/Organization	Name	Division/Group			
Plumas NF	Steve Murphy	Division/Group			
Butte County Sheriff	Derek Bell	Branch	III	Nick Casci / Jarrod Clinkenbeard (T)	
Mooretown Rancheria	Scot Steinbring	Division/Group	U	Matt Milojevich / David Barnett (T)	
State Parks	Aaron Wright	Division/Group	V	Jason Finney / Dennis Breshears (T)	
Butte EMS	Mickey Huber	Division/Group			
PG&E	Rob Cone	Division/Group			
BLM	Jeremy Strait	Division/Group			
Sierra Pacific Industries	Steve Roberts	Branch	Contingency		
CAL-OES	Ken Hood / Dave Franklin	Division/Group			
CCC	Cameron Loomis	Division/Group			
CDCR	Galvin Ratliff	Division/Group			
CHP	CPT. April Baxter / LT. Marc Stokes	Division/Group			
		Division/Group			
		Branch			
5. Planning Section:					
Chief	Andy Murphy / Roger Noon (T)	Division/Group			
Deputy	Jeff Windham	Division/Group			
Resource Unit	Andy Hubbs / John Stornetta	Division/Group			
Situation Unit	Robert Clark	Division/Group			
Documentation Unit		Branch			
Demobilization Unit	Nick Lawlor	Division/Group			
GISS	Fred Postler	Division/Group			
FBAN	Todd Hopkins	Division/Group			
IMET		Division/Group			
Training Tech Spec	Claudia Soiza	Staging Area			
		Air Operations Branch	Director:		
6. Logistics Section					
Chief	Ken Lowe / Brian Robbins (T)	Air Support Grp Sup	Greg Brandshaw		
Supply Unit	Milford Ferguson	Helibase Manager	Shawn Predder		
Facilities Unit	Devon Ellsworth				
8. Finance/Administration Section:					
Ground Support Unit	Tom Stroing	Chief	Dale Barnett		
Hired Equipment Tech	Jason Marsh	Time Unit	Chuck Carroll		
Communications Unit	John Aguilera	Procurement Unit	Jason McDermott		
Medical Unit	Mathew Lathrop	Comp/Claims Unit	Joe Ekblad		
Motel Tech Spec	Paul Pumarejo	Cost Unit	Jennifer Fagen		
Prepared By: Name:	Andy Murphy	Position/Title:	PSC	Signature:	
ICS 203		Date/Time:	8/31/2017 2300 hours		

PONDEROSANational Weather Service Sacramento2017-08-31 6:55 PM PDT

SPOT FORECAST for PONDEROSA...CALFIRE
National Weather Service SACRAMENTO CA
531 PM PDT Thu Aug 31 2017

Forecast is based on request time of 1800 PDT on August 31.
If conditions become unrepresentative...contact the National Weather Service.

.DISCUSSION...

Strong high pressure will remain over the region and bring very hot temperatures to the location, low humidities and poor humidity recovery's each day and night. Local easterly gusts to 20 mph late Thursday night and in the early morning hours and again Friday night.

.FRIDAY...

Sky/weather.....Sunny.
Max temperature.....103-108.
Min humidity.....7-12 percent.
Wind (20 ft).....
Slope/valley.....Northeast winds 7 to 12 mph early shifting to the southwest up to 6 mph in the afternoon.
Ridgetop.....East 8 mph.
Mixing height.....200 ft AGL increasing to 10700-11900 ft AGL late in the morning.
Transport winds.....East 8 mph.
CWR.....0 percent.
LAL.....1.

.FRIDAY NIGHT...

Sky/weather.....Clear.
Min temperature.....78-83.
Max humidity.....20-30 percent.
Wind (20 ft).....
Slope/valley.....Southwest winds up to 6 mph shifting to the east 5 to 10 mph after midnight.
Ridgetop.....Northeast 6 mph.
Mixing height.....11700 ft AGL decreasing to 200-1600 ft AGL early in the evening.
Transport winds.....Northeast 6 mph.
CWR.....0 percent.
LAL.....1.

\$\$

Forecaster...RB
Requested by...Todd Hopkins (FBAN IMT2)
Type of request...WILDFIRE
.TAG 1715117.1/STO
.EMAIL todd.hopkins@fire.ca.gov

FIRE BEHAVIOR FORECAST

FORECAST NUMBER: 2	TYPE OF FIRE: Wildfire
FIRE NAME: Ponderosa Fire	OPERATIONAL PERIOD: 09/01/17 0700-0700
DATE ISSUED: 08/31/17	TIME ISSUED: 1930
UNIT: CA-BTU-013737	SIGNED: <i>Todd Hopkins Robert Clark</i> Typed/printed: Todd Hopkins (FBAN) Robert Clark (FBTS)

INPUTS

WEATHER SUMMARY: Strong high pressure will remain over the region and bring very hot temperatures to the location, low humidities and poor humidity recoveries each day and night. Local easterly gusts to 20 mph late Thursday night and in the early morning hours and again Friday night.

WEATHER: Sunny, Smoky, very hot, and very dry.

TEMPERATURES / HUMIDITY: **Day:** Max Temperature 103-108 F / Min Humidity: 7%-12%
Night: Min Temperature 78-83 F / Max Humidity: 20%-30%

20 FT WINDS: Slope/Valley: Northeast/Downslope 7-12 mph in the morning, shifting to the southwest up to 6 mph in the afternoon. Southwest winds up to 6 mph shifting to the east 5 to 10 mph after midnight.

Ridgetop: East 8 mph in the morning, becoming northeast 6 mph in afternoon continuing through the evening hours.

OUTPUTS

FIRE BEHAVIOR

GENERAL: The fire is burning in a mix of grass and brush with stands of timber and timber litter that are extremely dry and have a heavy fuel loading. The fire spread is being driven by fuel and topography runs with short range spotting. Group tree torching could cast embers to produce spot fires in receptive fuel beds, especially where timber litter fuel loading is high. Nighttime humidity recovery is expected to be poor, however the fire activity should decrease slightly due to the lack of solar heating on the fuels.

Probability of Ignition: 100%
100 HRFM: 97th Percentile

FDPM: 2%

ERC: Above 90th Percentile
1000 HRFM: 90th Percentile

SPECIFIC:

Rate of Spread: Grass: Head Fire: 33-83 ft/min, Flanking Fire: 6-17 ft/min, Backing Fire: 4-9 ft/min
Brush: Head Fire: 23-47 ft/min, Flanking Fire: 5-9 ft/min, Backing Fire: 2-5 ft/min
Timber Understory: 7-9 ft/min, Flanking Fire: 1-2 ft/min, Backing Fire: >1 ft/min

Flame Length- Grass: Head Fire 5-13 ft, Flanking Fire: 2-6 ft, Backing Fire: 2-5 ft
Brush: Head Fire: 11-17 ft, Flanking Fire: 5-8 ft, Backing Fire: 4-6 ft
Timber Understory: Head Fire: 5-7 ft, Flanking Fire: 2-3 ft, Backing Fire: 1-2 ft

Spotting Distances- Up to 500 feet

AIR OPERATIONS:

Smoky conditions may make visibility difficult for air resources.
Sunrise: 0635 Sunset: 1938

SAFETY

- Identify Trigger Points Early in the Shift and Respect Them!
- Watch out when on a hillside where rolling materials can ignite fuel below.
- Expect Areas Where Wind and Terrain Align to Produce *Surprisingly* Rapid Rates of Spread!



PONDEROSA SAFETY MESSAGE

Maintain Situational Awareness

INCIDENT: Ponderosa Fire CA-BTU-013737 | **DATE:** September 1, 2017 | **TIME:** 0700-0700

Major Hazards and Risks: Extreme fire behavior, Hot dry weather, Steep terrain, Hazard trees.

Heat/Fatigue/Dehydration: Hot weather for the next several days, be alert for signs of fatigue and take breaks as necessary. Be alert for signs of heat stress in yourself and others. Utilize cooling stations when appropriate.

Fire Behavior: Fuels are receptive to fire spread. A small amount of wind on this dry fuel changes fire behavior dramatically!! Be alert to changes in wind direction and expect changes in fire behavior.

Hazard trees: Survey your work areas for hazard trees, flag and restrict access, use only qualified personnel for tree felling. Dead trees from bug kill. Review and follow **Hazard Tree Safety**, pg. 22-23 in your IRPG.

Steep slopes/rolling material: Watch your footing while hiking in steep terrain. Be careful of loose rolling debris. Maintain Situational Awareness.

Personnel: Manage yourself and those around you for fatigue. Drink fluids frequently and eat nutritious food regularly. As fatigue increases, injuries tend to increase also.

Driving: Slow Down! Drive defensively. Expect the unexpected around every curve. Drive with headlights and seatbelts on. Coordinate your movements on all one-lane roads.

Downed powerlines and High voltage powerlines: Follow power line safety guidelines (IRPG pg.24), watch out for burned out power poles.

Review your ICS 206 and know what to do in the event of an (IWI).

Lookouts, Communication, Escape routes, Safety zones

Tailgate Safety

- **Accountability:** everyone checks in and everyone checks out. Supervisors know where their crews are at all times
- **Communication:** everyone knows the com-plan
- **Briefing:** everyone knows the plan and the contingency plan
- **Safety gear:** everyone has the appropriate safety gear in good working condition
- **LCES:** they are clear and made known to everyone

Heat Illness Prevention:

- Drink plenty of fluids:
 - Water and Gatorade
- Avoid drinking energy drinks
- Rest when you can
- Find shade when you can
- Eat nutritious food regularly



PONDEROSA INCIDENT RISK ANALYSIS (ICS 215a)



DIV	HAZARDOUS ACTIONS/CONDITIONS	MITIGATIONS / WARNINGS / REMEDIES
P, Q, V	HAZARD TREES	Identify and Isolate the area to provide for the safety of others. Flag and make proper notifications. Many dead trees. Evaluate all trees prior to working under or near them. DO NOT Fall trees out of your certification level.
ALL	HEAT/FATIGUE/DEHYDRATION	Be alert for signs of fatigue, take breaks as necessary and document these breaks on a 214. Monitor incoming resources for level of fatigue. Drink water before, during and after shifts, up to 1.5 gal. per shift. Increased Heat cooling stations will be set up at Drop Points, work with Divisions and Branches when utilizing. Be alert for signs of heat stress in yourself and others; use the buddy system. Eat small meals often and when possible Drink electrolyte drinks at a 3 water to 1 sport drink ratio.
ALL	STEEP TERRAIN / ROLLING DEBRIS	Watch your footing while hiking in steep terrain. Be careful of loose rolling debris Maintain Situational Awareness.
ALL	EXTREME FIRE BEHAVIOR	Review "Severe Fire Behavior Potential" (IRPG p.68). Monitor current weather conditions and forecasts. Make sure all personnel receive thorough briefings every shift. Maintain adequate escape routes and safety zones. Advise all personnel if these are compromised or changed. Set trigger points when appropriate. Adhere to 10 Standard Orders, mitigate 18 situations, Maintain Situational Awareness
ALL	DRIVING HAZARDS	Slow Down! Drive defensively! Expect the unexpected around every curve. Drive with headlights and seatbelts on. Narrow dirt roads with limited passing room. Coordinate your movements on all one lane roads. Use warning devices when operating near traffic.
ALL	LINE CONSTRUCTION	Conduct thorough briefing for all personnel (inside rear cover IRPG). Ensure LCES in place prior to engagement (IRPG p. 7). Establish adequate safety zones (IRPG p.8). Use Downhill Line Checklist (IRPG p. 9). Follow "Look Up, Look Down, Look Around" procedures (IRPG p. 3-4). Utilize Risk Management Process (IRPG p.1).
ALL	AIRCRAFT OPERATIONS	Only utilize aircraft to insert personnel on the line when necessary. Monitor air-to-ground frequency, they are your eyes in the sky. Use air-to-ground frequency to communicate with aircraft. Use clear, concise statements when directing aircraft.
ALL	DOZER SAFETY	Watch for rolling material. Monitor safe working distances. Avoid working below Dozer. Utilize communication with the operator (radio or hand signals)
ALL	POWER LINES	Follow Power Line Safety guidelines (IRPG pg.24.) Communicate power line hazards to immediate supervisor and hazard flag accordingly. Flag area around downed power lines and deny access. Treat all downed power lines as energized.
ALL	STRUCTURE DEFENSE & HAZARDS	Conduct thorough briefing for all personnel (inside rear cover IRPG). Follow Wildland Urban Interface Guidelines (IRPG p. 12-16).
ALL	MARIJUANA GROW OPERATIONS	Use extreme caution on grow sites. Isolate and Do Not Enter. Hazardous chemicals associated with growing operation.
Incident Name: Ponderosa CA-BTU-013737 ICS 215a		DATE PREPARED: August 31, 2017 1800hrs Prepared by: Barry Owens, SOF1 (T)
		OPERATIONAL PERIOD September 1, 2017 0700-0700

ASSIGNMENT LIST (ICS 204)

1. Incident Name: <p style="text-align: center; margin: 5px 0;">Ponderosa</p>		2. Operational Period: Date From: 09/01/17 Date To: 09/02/17 Time From: 0700 Time To: 0700			3. Branch: I Div/Group: A Alpha	
4. Operations Personnel: Operations Section Chief: Charlie Blankenheim Night Ops: John Messina Branch Director: Marshall Turbeville / Louis Ermigarat (T) Division/Group Supervisor: Dave Logan / Joseph Walton (T)						
5. Resources Assigned:		** Resources Below in Bold are 12 Hour **			Reporting Location, Special Equipment, Remarks, Notes, and Information <small>Time Location</small>	
Resource Identifier	Leader	Personnel	Request #			
STC XST 4203C	Becker, Bill	17	E-53	0700-0700		DP-3
STC CZU 9171C	Shiffer, Tim	19	E-77	0700-0700		DP-3
STC XSN 2377C*	Cornelssen, David	22	E-79	0700-0700		DP-3
STG MEU 9115G	Bryner, Dean	34	C-16	0700-0700		DP-3
DZR PVT E-58 TOUGH	Hayse, Matt	2	E-58	0700-0700		DP-3
W/T EMD WT3	Terry, Stephen	1	E-94	0700-1900		DP-3
W/T PVT E-84 ROBINSON	Robinson, Joel	2	E-84	0700-0700		DP-3
W/T PVT E-89 WURLITZR	Page, Tom	2	E-89	0700-0700		DP-3
W/T PVT E-154 HUMPHERYS	Humpherys, Greg	2	E-154	0700-0700		DP-3

- 6. Work Assignments:**
- Fall trees that threaten control lines.
 - Fall hazard trees.
 - Improve and hold control lines.
 - Mop up 150 feet interior.

7. Special Instructions:
 * Denotes ALS resource

8. Communications (radio and/or phone contact numbers needed for this assignment):							
Name	Ch	Function	Rx Freq	Rx Tone	Tx Freq	Tx Tone	Notes
BUTTE SUPP	1	COMMAND	154.4150	123.0	159.000	See ICS 205	TONE 2.5.13
CDF T13	7	Tactical	151.3775	192.8 (T16)	151.3775	192.8 (T16)	
CALCORD	14	MEDICAL	156.0750	156.7	156.0750	156.7	
A/G CDF T18	15	Air to Ground	159.3450	192.8(T16)	159.3450	192.8(T16)	
GUARD	16	EMERGENCY	168.6250		168.6250	110.9	

9. Prepared by: Name: Kyle O'Neil Pos/Title: RESL Signature:
ICS 204 Date/Time: 8/31/2017 2300 hours

ASSIGNMENT LIST (ICS 204)

1. Incident Name: <p style="text-align: center;">Ponderosa</p>	2. Operational Period: Date From: 09/01/17 Date To: 09/02/17 Time From: 0700 Time To: 0700	3. Branch: I Div/Group: P Papa					
4. Operations Personnel: Operations Section Chief: Charlie Blankenheim Night Ops: John Messina Branch Director: Marshall Turbeville / Louis Ermigarat (T) Division/Group Supervisor: Brandon Lanning / Nick Wallingford (T)							
5. Resources Assigned:	** Resources Below in Bold are 12 Hour **	Reporting Location, Special Equipment, Remarks, Notes, and Information Time Location					
Resource Identifier	Leader	Personnel	Request #				
STC XYU 3300C	Webb, Rich	18	E-49	0700-0700	DP-1		
STC XSJ 4183C	Ingrum, Dave	18	E-52	0700-0700	DP-1		
STG AEU 9274G	King, Martin	33	C-19	0700-0700	DP-1		
W/T BTC 25	Churchill, Brian	1	E-38	0700-1900	DP-1		
W/T PVT E-86 HAYES	Pearce, Joe	1	E-86	0700-0700	DP-1		
W/T PVT E-153 RHC	Fields, Bruce	2	E-153	0700-0700	DP-1		
FALM O-74		1	O-74	0700-1900	DP-1		
FEMP BETHEL O-227	Bethel, Richard	1	O-227	0700-0700	DP-1		
FEMT MCLEOD O-237	Mcleod, Derek	1	O-237	0700-0700	DP-1		
6. Work Assignments: <ul style="list-style-type: none">- Fall trees that threaten control lines.- Fall hazard trees.- Hold fire within current lines.- Improve and hold control lines.							
7. Special Instructions: 							
8. Communications (radio and/or phone contact numbers needed for this assignment):							
Name	Ch	Function	Rx Freq	Rx Tone	Tx Freq	Tx Tone	Notes
BUTTE SUPP	1	COMMAND	154.4150	123.0	159.000	See ICS 205	TONE 2,5,13
CDF T26	8	Tactical	159.2925	192.8 (T16)	159.2925	192.8 (T16)	
CALCORD	14	MEDICAL	156.0750	156.7	156.0750	156.7	
A/G CDF T18	15	Air to Ground	159.3450	192.8(T16)	159.3450	192.8(T16)	
GUARD	16	EMERGENCY	168.6250		168.6250	110.9	
9. Prepared by: Name: Kyle O'Neil Pos/Title: RESL Signature:							
ICS 204		Date/Time: 8/31/2017		2300 hours			

ASSIGNMENT LIST (ICS 204)

1. Incident Name: Ponderosa		2. Operational Period: Date From: 09/01/17 Date To: 09/02/17 Time From: 0700 Time To: 0700			3. Branch: I Div/Group: Q Quebec		
4. Operations Personnel: Operations Section Chief: Charlie Blankenheim Night Ops: John Messina Branch Director: Marshall Turbeville / Louis Ermigarat (T) Division/Group Supervisor: Bo Lee							
5. Resources Assigned:		** Resources Below in Bold are 12 Hour **			Reporting Location, Special Equipment, Remarks, Notes, and Information Time Location		
Resource Identifier	Leader	Personnel	Request #				
STC LNU 9140C	Novak, Jason	18	E-78	0700-0700	DP-2		
STC XTB 4232C	Donnelly, Matthew T	2	E-8	0700-0700	DP-2		
STG CZU 9175G	Moriarty, Neal	33	C-20	0700-0700	DP-2		
STG SHU 9242G	Furia, James	33	C-15	0700-0700	DP-2		
DOZ PVT E-138 LONESTAR	White, Austin	2	E-138	0700-0700	DP-2		
DOZ PVT E-141 HAYES	Hays, Bob	4	E-141	0700-0700	DP-2		
W/T BTC 67	Stephens, Jim	1	E-48	0700-1900	DP-2		
W/T PVT E-88 PATANE	Patane, Gino	2	E-88	0700-0700	DP-2		
W/T PVT E-109 TOUGH	Hamilton, Mark	1	E-109	0700-0700	DP-2		
W/T PVT E-160 BOGGS	Boggs, Steve	1	E-160	0700-0700	DP-2		
FALM O-76		2	O-76	0700-1900	DP-2		
FALM O-77		1	O-77	0700-1900	DP-2		
6. Work Assignments: - Fall trees that threaten control lines. - Fall hazard trees. - Improve and hold control lines. - Backhaul trash/hose/water.							
7. Special Instructions:							
8. Communications (radio and/or phone contact numbers needed for this assignment):							
Name	Ch	Function	Rx Freq	Rx Tone	Tx Freq	Tx Tone	Notes
BUTTE SUPP	1	COMMAND	154.4150	123.0	159.000	See ICS 205	TONE 2,5,13
CDF T27	9	Tactical	159.3075	192.8 (T16)	159.3075	192.8 (T16)	
CALCORD	14	MEDICAL	156.0750	156.7	156.0750	156.7	
A/G CDF T18	15	Air to Ground	159.3450	192.8(T16)	159.3450	192.8(T16)	
GUARD	16	EMERGENCY	168.6250		168.6250	110.9	
9. Prepared by: Name: Kyle O'Neil		Pos/Title: RESL		Signature:			
ICS 204		Date/Time: 8/31/2017		2300 hours			

ASSIGNMENT LIST (ICS 204)

1. Incident Name: Ponderosa		2. Operational Period: Date From: 09/01/17 Date To: 09/02/17 Time From: 0700 Time To: 0700				3. Branch: III Div/Group: U Uniform Page 1 of 2	
4. Operations Personnel: Operations Section Chief: Charlie Blankenheim Night Ops: John Messina Branch Director: Nick Casci / Jarrod Clinkenbeard (T) Division/Group Supervisor: Matt Milojevich / David Barnett (T)							
5. Resources Assigned:		** Resources Below in Bold are 12 Hour **				Reporting Location, Special Equipment, Remarks, Notes, and Information	
Resource Identifier	Leader	Personnel	Request #	Time	Location		
STC LNU 9142C	Benguerel, Justin	19	E-5	0700-0700	DP-2		
STC XYO 4277C	Stiles, David	21	E-12	0700-0700	DP-2		
STC XTO 4253C	Higgins, Mitchell	20	E-54	0700-0700	DP-2		
STC MRN 9150C*	Nunes, Tom	17	E-76	0700-0700	DP-2		
STG LNU 9146G	Wettstein, Robert	33	C-3	0700-0700	DP-2		
STG LMU 9221G	Veverka, Robert	33	C-7	0700-0700	DP-2		
STG MEU 9116G	Boudreaux, Pierre	33	C-17	0700-0700	DP-2		
DOZ NEU 2342	Entz, Shawn	2	E-15	0700-0700	DP-2		
DOZ TGU 2544	Wilbanks, Cliff	1	E-16	0700-0700	DP-2		
DOZ AEU 2741	Besotes, Jeffrey	1	E-17	0700-0700	DP-2		
DOZ BTU 2142	Walton, Jacob	2	E-44	0700-0700	DP-2		
DOZ SCU 1641	Mcvay, Shane	2	E-71	0700-0700	DP-2		
DOZ CZU 1741	Little, Justin	3	E-95	0700-0700	DP-2		
DOZ PVT E-145 BLUE EAGLE	Andrews, Luke	2	E-145	0700-0700	DP-2		
GDR PVT E-151 DUDLEYS	Lindauer, Mike	1	E-151	0700-1900	DP-2		
W/T BTC 45	Simpson, Steven	1	E-45	0700-1900	DP-2		
W/T BTC 52	Bourasa, Craig	1	E-57	0700-1900	DP-2		
W/T PVT E-85 COLD	Mayberry, Steve	2	E-85	0700-0700	DP-2		
6. Work Assignments: - Construct direct line from U/A break to U/Y break. - Fall trees that threaten control lines. - Improve and hold control lines. - Mop up 150 feet interior.							
7. Special Instructions: * Denotes ALS resource.							
8. Communications (radio and/or phone contact numbers needed for this assignment):							
Name	Ch	Function	Rx Freq	Rx Tone	Tx Freq	Tx Tone	Notes
BUTTE SUPP	1	COMMAND	154.4150	123.0	159.000	See ICS 205	TONE 2,5,13
CDF T28	10	Tactical	151.1825	192.8 (T16)	151.1825	192.8 (T16)	
CALCORD	14	MEDICAL	156.0750	156.7	156.0750	156.7	
A/G CDF T18	15	Air to Ground	159.3450	192.8(T16)	159.3450	192.8(T16)	
GUARD	16	EMERGENCY	168.6250		168.6250	110.9	
9. Prepared by: Name: Kyle O'Neil		Pos/Title: RESL		Signature:			
ICS 204		Date/Time: 8/31/2017 2300 hours					

ASSIGNMENT LIST (ICS 204)

1. Incident Name: Ponderosa		2. Operational Period: Date From: 09/01/17 Date To: 09/02/17 Time From: 0700 Time To: 0700			3. Branch: III Div/Group: U Uniform Page 2 of 2		
4. Operations Personnel: Operations Section Chief: Charlie Blankenheim Night Ops: John Messina Branch Director: Nick Casci / Jarrod Clinkenbeard (T) Division/Group Supervisor: Matt Milojevich / David Barnett (T)							
5. Resources Assigned:		** Resources Below in Bold are 12 Hour **			Reporting Location, Special Equipment, Remarks, Notes, and Information Time Location		
Resource Identifier	Leader	Personnel	Request #				
W/T PVT E-90 GREG SHANDEL	Shandel, Greg	2	E-90	0700-0700	DP-2		
W/T PVT E-91 WURLITZR	Rogers, Gary	2	E-91	0700-0700	DP-2		
W/T PVT E-155 LONESTAR	Alexander, Heather	2	E-155	0700-0700	DP-2		
W/T PVT E-157 FRONTERA	Redcorn, Will	2	E-157	0700-0700	DP-2		
FALM O-278		1	O-278	0700-1900	DP-2		
FEMP STEPANIAN O-229	Stepanian, Nicholas	1	O-229	0700-0700	DP-2		
FEMT JURE O-98	Jure, Gus	1	O-98	0700-0700	DP-2		
6. Work Assignments:							
<ul style="list-style-type: none"> - Construct direct line from U/A break to U/Y break. - Fall trees that threaten control lines. - Improve and hold control lines. - Mop up 150 feet interior. 							
7. Special Instructions:							
* Denotes ALS resource.							
8. Communications (radio and/or phone contact numbers needed for this assignment):							
Name	Ch	Function	Rx Freq	Rx Tone	Tx Freq	Tx Tone	Notes
BUTTE SUPP	1	COMMAND	154.4150	123.0	159.000	See ICS 205	TONE 2,5,13
CDF T28	10	Tactical	151.1825	192.8 (T16)	151.1825	192.8 (T16)	
CALCORD	14	MEDICAL	156.0750	156.7	156.0750	156.7	
A/G CDF T18	15	Air to Ground	159.3450	192.8(T16)	159.3450	192.8(T16)	
GUARD	16	EMERGENCY	168.6250		168.6250	110.9	
9. Prepared by: Name:		Kyle O'Neil		Pos/Title:		RESL	
ICS 204		Date/Time: 8/31/2017		2300 hours		Signature:	

ASSIGNMENT LIST (ICS 204)

1. Incident Name: <p style="text-align: center;">Ponderosa</p>		2. Operational Period: Date From: 09/01/17 Date To: 09/02/17 Time From: 0700 Time To: 0700			3. Branch: III Div/Group: V Victor Page 1 of 2		
4. Operations Personnel: Operations Section Chief: Charlie Blankenheim Night Ops: John Messina Branch Director: Nick Casci / Jarrod Clinkenbeard (T) Division/Group Supervisor: Jason Finney / Dennis Breshears (T)							
5. Resources Assigned:		** Resources Below in Bold are 12 Hour **			Reporting Location, Special Equipment, Remarks, Notes, and Information Time Location		
Resource Identifier	Leader	Personnel	Request #				
STC OES 4076C	Lohan, Paul	18	E-51	0700-0700	DP-3		
STC HUU 9120C	Mclaughlin, Ron	16	E-73	0700-0700	DP-3		
STC TCU 9440C	Acosta, Jude R	17	E-74	0700-0700	DP-3		
STC SCU 9160C	Rose, Mike	17	E-75	0700-0700	DP-3		
STC XCA 4060C*	Mullins, Scott	18	E-50	0700-0700	DP-3		
STG AEU 9275G	Drummond, Howard	33	C-4	0700-0700	DP-3		
STG MEU 9119G	Grim, Anthony	33	C-18	0700-0700	DP-3		
STG HUU 9127G	Rickson, Derik	33	C-21	0700-0700	DP-3		
STL LNU 9143L	Jones, Doug	7	E-13	0700-0700	DP-3		
STL MRN 9151L	Rosebrook, Jake	9	E-72	0700-0700	DP-3		
DOZ PVT E-139 HUMPHERYS	Humpherys, Gary	2	E-139	0700-0700	DP-3		
DOZ PVT E-140 BLACK CAT	Fukuda, Adrian	2	E-140	0700-0700	DP-3		
DOZ PVT E-142 EARTHMOVING	Funes, Tom	2	E-142	0700-0700	DP-3		
DOZ PVT E -144 TOUGH COMPANY	Hamilton, Mike	2	E-144	0700-0700	DP-3		
DOZ PVT E-146 SYLVIA	Wurlitzer, Greg	2	E-146	0700-0700	DP-3		
DOZ PVT E-147 SUNRISE	Obrian, Mike	2	E-147	0700-0700	DP-3		
W/T BTC 64	Casagrande, David	1	E-39	0700-1900	DP-3		
W/T PVT E-82 CE BECKER	Becker, Clark	2	E-82	0700-0700	DP-3		
6. Work Assignments: - Construct direct line from PG&E Road to Sucker Run. - Fall hazard trees. - Hold fire within current lines. - Improve and hold control lines.							
7. Special Instructions: * Denotes ALS resource.							
8. Communications (radio and/or phone contact numbers needed for this assignment):							
Name	Ch	Function	Rx Freq	Rx Tone	Tx Freq	Tx Tone	Notes
BUTTE SUPP	1	COMMAND	154.4150	123.0	159.000	See ICS 205	TONE 2,5,13
CDF T29	11	Tactical	151.3475	192.8	151.3475	192.8	
CALCORD	14	MEDICAL	156.0750	156.7	156.0750	156.7	
A/G CDF T18	15	Air to Ground	159.3450	192.8(T16)	159.3450	192.8(T16)	
GUARD	16	EMERGENCY	168.6250		168.6250	110.9	
9. Prepared by: Name: Kyle O'Neil		Pos/Title: RESL		Signature:			
ICS 204		Date/Time: 8/31/2017		2300 hours			

ASSIGNMENT LIST (ICS 204)

1. Incident Name: <p style="text-align: center;">Ponderosa</p>	2. Operational Period: Date From: 09/01/17 Date To: 09/02/17 Time From: 0700 Time To: 0700	3. Branch: Contingency Div/Group: Contingency
4. Operations Personnel: Operations Section Chief: Charlie Blankenheim Night Ops: John Messina Branch Director: Division/Group Supervisor:		

5. Resources Assigned:	** Resources Below in Bold are 12 Hour **			Reporting Location, Special Equipment, Remarks, Notes, and Information Time Location
Resource Identifier	Leader	Personnel	Request #	

6. Work Assignments:

7. Special Instructions:

8. Communications (radio and/or phone contact numbers needed for this assignment):

Name	Ch	Function	Rx Freq	Rx Tone	Tx Freq	Tx Tone	Notes
BUTTE SUPP	1	COMMAND	154.4150	123.0	159.000		TONE 2,5,13
CDF T31	12	Tactical	159.3825	192.8	159.3825	192.8	
CALCORD	14	MEDICAL	156.0750	156.7	156.0750	156.7	
A/G CDF T18	15	Air to Ground	159.3450	192.8(T16)	159.3450		
GUARD	16	EMERGENCY	168.6250		168.6250	110.9	

9. Prepared by: Name:	Kyle O'Neil	Pos/Title:	RESL	Signature:	
ICS 204		Date/Time:	8/31/2017 2300 hours		

AIR OPERATIONS SUMMARY ICS-220

Incident Name
Ponderosa

Time Prepared
1800

Date Prepared
Thursday, August 31, 2017

Prepared By
Rob Sonsteng

General Remarks, Safety Notes, Hazards, Air Operations Special Equipment, etc.
TRACK ALL DIPSITE LOCATIONS / NUMBER OF DIPS / GALLONS TAKEN.
TRACK ALL DROP LOCATIONS / NUMBER OF DROPS / GALLONS DROPPED
ALL GPS DATA TO BE COLLECTED IN DEGREES, MINUTES, DECIMAL MINUTES, FORMAT.
Retardant Avoidance Area 300' of Waterways. Notify the AOB and Provide: Lat / Long, Estimated Number of Gallons and a Map Detailing The Area.

Helibase Information
Name Ponderosa
Latitude 39.29.268
Longitude 121.37.268

TFR Information
Request # A34
Radius: 7 NM
Altitude: 7000 MSL
Centerpoint: 39.35.00 Lat
121.18.00 Long
NOTAMS:

Rescue Ship Information
Name Hoist/Rescue
Phone C205
Make/Model UH1H
Location Oroville
Request Procedure for These Aircraft:
See Medical Plan For Additional Info
See Medical Plan For Additional Info

Frequencies	TX	Tone	RX	Tone	AM / FM
COMMAND	159.0000	123.0 (T2)	154.4150	123.0 (T)	FM
AIR / GROUND - TACTICAL	159.3450	192.8	159.3450	192.8	FM
AIR / AIR ROTARY WING	118.2250		118.2250		AM
AIR / AIR BRIEFING	127.6250		127.6250		AM
AIR TACTICS	167.9500		167.9500		FM
TOLC	123.0250		123.0250		AM
DECK	163.1000		163.1000		FM
CALCORD - MEDICAL	156.0750	156.7	156.0750	156.7	FM
AIRGUARD - Emergency Only	168.6250	110.9 (T1)	168.6250		FM

HELICOPTERS (Use page 2 if Needed)

FAA #	Type	Make/Model	Helibase	Avail	Start	Remarks	FAA #	Type	Make/Model	Helibase	Avail	Start	Remarks
1FS	3		Oroville	900	800	HELCO	HT743	1	S64E	Oroville	900	800	Cal Fire Exclusive use
1SG	3		Oroville	900	800	RECON/HELCO	HT35S	1	S64E	Oroville	900	800	Cal Fire Exclusive use
2AH	2	Bell 212	Oroville	900	800	Bucket	823	1		Oroville	900	800	National Guard
C205	2	UH1H	Oroville	900	800	Hoist/Bucket	824	1		Oroville	900	800	National Guard
7PJ	2		Oroville	900	800	Bucket	825	1		Oroville	900	800	National Guard
8PJ	2		Oroville	900	800	Bucket	830	1		Oroville	900	800	National Guard
							831	1		Oroville	900	800	National Guard

FIXED WING (Use Page 2 if Needed)

FAA #	Type	Make/Model	Base	Avail	Start	Remarks	FAA #	Type	Make/Model	Base	Avail	Start	Remarks
N402DF	Air Tactical	OV10	Chico	900	830	AA210							
N450DF	T-3	S-2	Chico	900	830	T93							
						1 Air Tanker TBD							

MEDICAL PLAN ICS 206	1. INCIDENT NAME Ponderosa Fire	2. DATE PREPARED 8/31/2017	3. TIME PREPARED 1830	4. OPERATIONAL PERIOD 9/1/2017 – 9/2/2017 0700-0700
---------------------------------------	---	-------------------------------	--------------------------	---

5. INCIDENT MEDICAL AID STATIONS

MEDICAL AID STATIONS	LOCATION	EMT	
		YES	NO
Base Camp	Incident Base Camp (At Med Unit Trailer)	X	
MERT	Magailia Conservation Camp	X	

6. TRANSPORTATION

A. AMBULANCE SERVICES

NAME	LOCATION	PHONE	PARAMEDICS	
			YES	NO
Enloe (AIR)	Chico/Redding	1-800-344-1863	X	
Butte County EMS	Chico, CA	530-332-7784	X	

B. INCIDENT AMBULANCES

NAME	LOCATION	PARAMEDICS	
		YES	NO
Butte County EMS	Chico/Redding	X	

7. HOSPITALS

NAME	ADDRESS	TRAVEL TIME		PHONE	HELIPAD		BURN CENTER	
		AIR	GRND		YES	NO	YES	NO
Med Net Channel								
Enloe Hospital/Chico (Trauma II)	1531 Esplanade Chico, CA	5	15	530-332-7784	X			
Mercy Medical Hospital/Redding	2175 Rosaline Ave. Redding, CA	20	60	530-225-6000	X			
UC Davis Med Center	2315 Stockton Blvd. Sacramento	25	120	916-734-2011 916-734-5669	X		X	

8. MEDICAL EMERGENCY PROCEDURE

EMERGENCY FREQUENCY: CALCORD

LINE EMERGENCY:

Crew Supervisor will contact Division Supervisor with patient complaint/condition and location.

- Division/Group Supervisor contacts:
 1. Closest EMS resource
 2. Communications Unit
- Communications Unit contacts:
 1. Ground or Air ambulance as requested
 2. Operations
 3. Safety
 4. Medical Unit
- Division Supervisor or designee will serve as point of contact and run medical emergency on assigned channel.
 1. A pre-assigned tactical frequency (i.e. CALCORD) should be used for IWI and only for duration of need.
- Communications Unit will clear command channel for emergency traffic as needed and only for duration of need.

CAMP EMERGENCY:

Contact Medical Unit via Communications with patient complaint/condition and location. Medical Staff will respond to stabilize incident:

- Medical Unit contacts:
 1. Safety
 2. Logistics
 3. Crew Supervisor
 4. Comps/Claims

INJURY REPORTING PROCEDURES

NATURE OF INJURY _____
 LOCATION OF PATIENT _____
 POINT OF CONTACT _____
 TRANSPORTATION REQUESTED BY: AIR ___ GROUND ___
 POINT OF PICKUP _____
 LAT _____ LONG _____
 PATIENT UNIT ID _____
 IS AN EMT WITH PATIENT: YES ___ NO ___
 AGE _____
 SEX: MALE ___ FEMALE ___

**ALL EMERGENCIES---Secure the area
and identify witnesses for later
investigation. Keep an accurate log of
events.**

ICS 206 (Rev 03/12) FR	9. PREPARED BY: (Medical Unit Leader) Matt Lathrop IMT-2	10. REVIEWED BY: (Safety Officer) <i>Bony Owen</i>
----------------------------------	---	---

ICS 205 - INCIDENT RADIO COMMUNICATIONS PLAN

1. Incident Name: PONDEROSA

2. Date/Time Prepared Date: 8/31/2017 Time: 1800
3. Operational Period: Date From: 9/1/2017 Time From: 0700
 Date To: 9/2/2017 Time To: 0700

<i>Controlled Unclassified Information//Basic</i>									
Ch#	Function	Name	Assigned To	Rx Freq	Rx Tone	Tx Freq	Tx Tone	Notes	
1	COMMAND	BUTTE SUPP	INCIDENT WIDE	154.4150	123.0 (T2)	159.0000	123.0 (T2)		
2	COMMAND	BUTTE SUPP	INCIDENT WIDE	154.4150	123.0 (T2)	159.0000	146.2 (T5)		
3	COMMAND	BUTTE SUPP	INCIDENT WIDE	154.4150	123.0 (T2)	159.0000	141.3 (T13)		
4									
5									
6									
7	TACTICAL	CDF TAC 13	BRANCH I DIV A	151.3775	192.8 (T16)	151.3775	192.8 (T16)		
8	TACTICAL	CDF TAC 26	BRANCH I DIV P	159.2925	192.8 (T16)	159.2925	192.8 (T16)		
9	TACTICAL	CDF TAC 27	BRANCH I DIV Q	159.3075	192.8 (T16)	159.3075	192.8 (T16)		
10	TACTICAL	CDF TAC 28	BRANCH III DIV U	151.1825	192.8 (T16)	151.1825	192.8 (T16)		
11	TACTICAL	CDF TAC 29	BRANCH III DIV V	151.3475	192.8 (T16)	151.3475	192.8 (T16)		
12	TACTICAL	CDF TAC 31	CONTINGENCY	159.3825	192.8 (T16)	159.3825	192.8 (T16)		
13									
14	EMS COORDINATION	CALCORD	INCIDENT WIDE	156.0750	156.7 (T6)	156.0750	156.7 (T6)		
15	AIR TO GROUND	CDF T18	INCIDENT WIDE	159.3450	192.8 (T16)	159.3450	192.8 (T16)		
16	EMERGENCY ONLY	AIR GUARD	INCIDENT WIDE	168.6250	0.0	168.6250	110.9 (T1)		GPH/DPH, 16 CH RADIOS
17									
18									
19									
20	EMERGENCY ONLY	AIR GUARD	INCIDENT WIDE	168.6250	0.0	168.6250	110.9 (T1)		GPH/DPH CMD, 20 CH RADIOS

5. Special Instructions
Controlled Unclassified Information//Basic
 Use the ICS 205 to reference and to correlate with the ICS 204's depending on your work assignments

6. Prepared by (Communications Unit Leader): Name: John Aguilera, COML IMT #2
 Signature: 
 Date/Time: 08/31/17 1800

ICS 205

TRAINING SPECIALIST MESSAGE

A Training Specialist is now on the incident.

ALL ASSIGNED TRAINEES

working on position task books will need to register with the Incident Training Specialist in order to receive proper credit for your assignment.

**The Training Specialist is available immediately following the morning Operations Briefing.
Location: Trailer Row**

TRAINING SPECIALIST

**Claudia Soiza
Cell-(949)632-7813**

**Incident Trainee/Trainer Data Form
Ponderosa Fire CA-BTU-013737**

Training Specialist: Claudia Soiza 949.632.7813

- All Incident trainees, including those on Firefighting Modules at your earliest opportunity complete this form and see the Training Specialist.
- Prior to or as you process through DEMOB, remember to close your training package. To close your training package bring: 1) A performance rating from your trainer. (ICS 225)
2) Your task book that has as many entries as possible by your Trainer.

Trainee Data

Trainee Name: _____ ICS Trainee Position: _____

Request # (A,C,E, or O): _____ Agency Designator (Ex. CA-RRU): _____

Ordered as Trainee? Y N Priority Trainee ____ Local Forest Trainee ____ IMT Trainee

Date Assigned: _____ Cell / Contact # While on Incident: _____

Training Records Mailed To: (Fire Chief, Training Officer):

Name: _____ Title _____

Name of Agency/Unit: _____

Agency/Unit Address: _____

City: _____ State: ____ Zip Code: _____ Phone: _____

Trainee Prerequisites

1. Possesses valid Qualification Card or agency certification card? ___Yes ___No

2. Trainee has current position task book issued by home unit? ___Yes ___No

Current Task Book Progress (Circle) 0% 25% 50% 75% 90%

Priority Open Task in PTB (What do you need to accomplish on this incident?)

Trainer/Evaluator Data

Trainer / Evaluator Name: _____ ICS position on fire: _____

Home Unit: _____ Agency Designator (Ex CA-RRU): _____

Request # (A,C,E,O): _____

Work Address: _____

City: _____ State: _____ Zip Code: _____

Cell / Contact While on Incident: _____



PONDEROSA PUBLIC INFORMATION



Incident Information Line: 503-538-7826

Media Line: 916-203-4153

MEDIA

California State Penal Code Section 409.5(d) allows the news media to enter scenes of disaster, riot, or civil disturbance. Properly identified members of the news media should not be restricted from entering the locations specified within the code, even if the area presents a danger to them. Media members should be advised of the nature of possible danger. Members of the media do not have the right to access crime scenes or any area where their presence may interfere with incident operations, mitigation or evidence collection.

- The media may only access private property with the property owner's permission. Fire personnel cannot provide members of the media with authorization to enter private property.
- If approached and questioned by the media and/or the public, talk about your assignment or task at hand. If need be, direct the questioning party to the incident PIO.
- Do not speculate or give opinions
- There is no such thing as an "off the record" comment.

CAL FIRE SOCIAL MEDIA POLICY (Social Media 0691)

Social Media is increasingly being used by public agencies and the media as well as the public. This form of communication continues to grow rapidly in order to supply the public's desire for instant information gratification. All personnel assigned to a CAL FIRE incident will adhere to the CAL FIRE Social Media Policy. Further information about the CAL FIRE Social Media Policy can be obtained from the Information Officer. If you are uncertain, please ask. **Do not post:**

- Inappropriate information, pictures or videos
- Opinions regarding the incident or policy
- Endorsements of any kind

PICTURES AND VIDEO OF INCIDENT

We are in a new era of media. Media no longer means the news/broadcast industry but now refers to anyone that has the capability to shoot video and or photographs and post them onto social media in a matter of minutes. Unfortunately we have seen some instances of video or photographs that have depicted unsafe, unprofessional or embarrassing circumstances which are a serious breach of ethics. When this happens it reflects poorly on all that are attached to this incident. Posting an inappropriate video, photo or blog comment could have unwanted effects. It may be unsafe to shoot photos or video and a firefighter who is concentrating on a camera can't be looking up, down and all around.

LOST AND FOUND

The Information staff will manage *Lost and Found* items for the incident. If you have lost an item, leave your contact information and what you have lost at the Information trailer. If you have found an item on the incident, bring the item to the Information trailer.

MAIL SERVICE

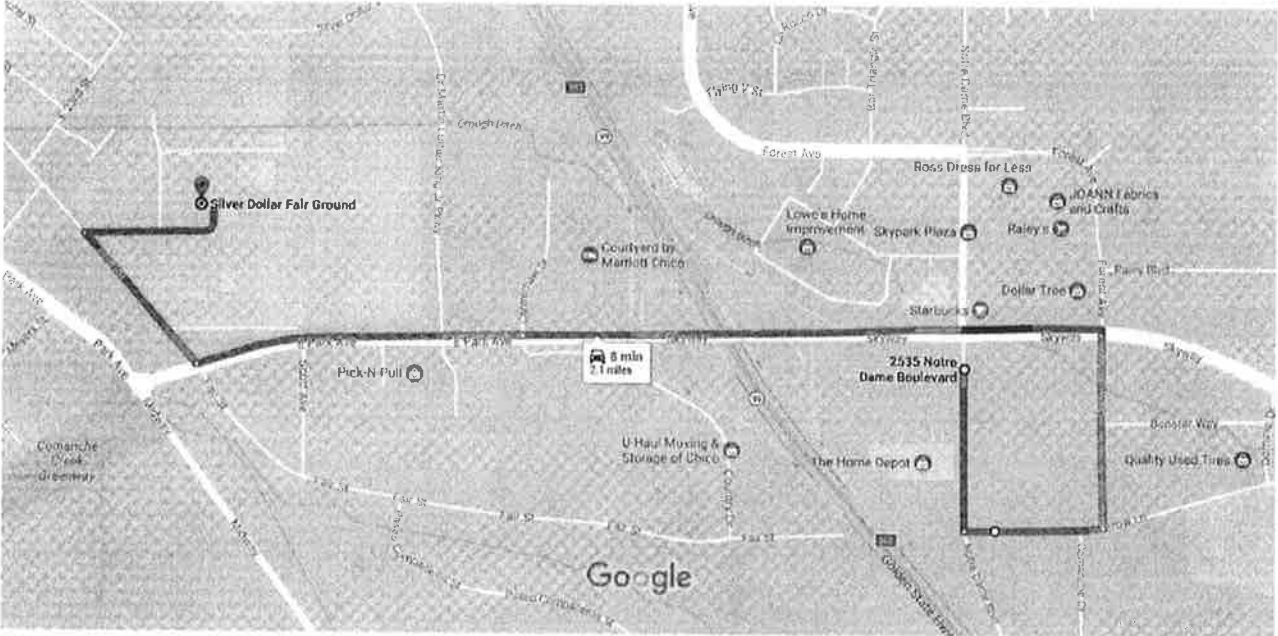
The Information staff will assist you in mailing and receiving letters and packages.

GROUND SUPPORT

8/31/2017

2535 Notre Dame Boulevard, Chico, CA to Silver Dollar Fair Ground - Google Maps

Google Maps 2535 Notre Dame Boulevard, Chico, CA to Silver Dollar Fair Ground Drive 2.1 miles, 8 min



Map data ©2017 Google United States 500 ft



via Skyway
7 min without traffic

8 min
2.1 miles

Archaeological and Historic Properties: Fireline Guidance for the Ponderosa Fire Butte County

Do not compromise safety for the protection and preservation of archaeological and historic properties. When possible and prudent:

1. Be on the lookout for prehistoric and historic archaeological sites. These sites typically occur adjacent to streams and springs but can occur in other areas as well. The most common indicators of prehistoric sites in this area are scatters of chipped stone flakes from tool making activities, food processing features including bedrock mortars, and areas of dark soil. Historic sites include homesteads and/or cabins that contain foundations, rock chimneys, wells, can/bottle scatters, ditches, mining tailings, and/or non-native vegetation.
2. Known sites will be flagged with a length of red flagging and a length of white plastic flagging tape close together. Note that much of the area has never been surveyed for archaeological resources and many sites out there have yet to be discovered.
3. If you observe archaeological resources, flagged or unflagged, attempt to avoid with ground disturbing activities altogether.
4. If avoidance is not possible, minimize ground disturbance. Use a hand crew rather than a dozer to remove fuels from control lines that must cross site areas if possible.
4. Leave all artifacts in place as some may have been intentionally placed for religious or ceremonial reasons. No collection permitted for any reason.
5. Note locations of discovered resources on a map. Better yet take site coordinates with a GPS. Leave information for the archaeologist with the Plans Unit so that the sites can be relocated and protected during Fire Suppression Repair. Flag the site in pink if possible.
6. If you encounter human remains, cease work in that area and contact the archaeologist immediately.

Your help preserving California's non-renewable cultural resources is appreciated.

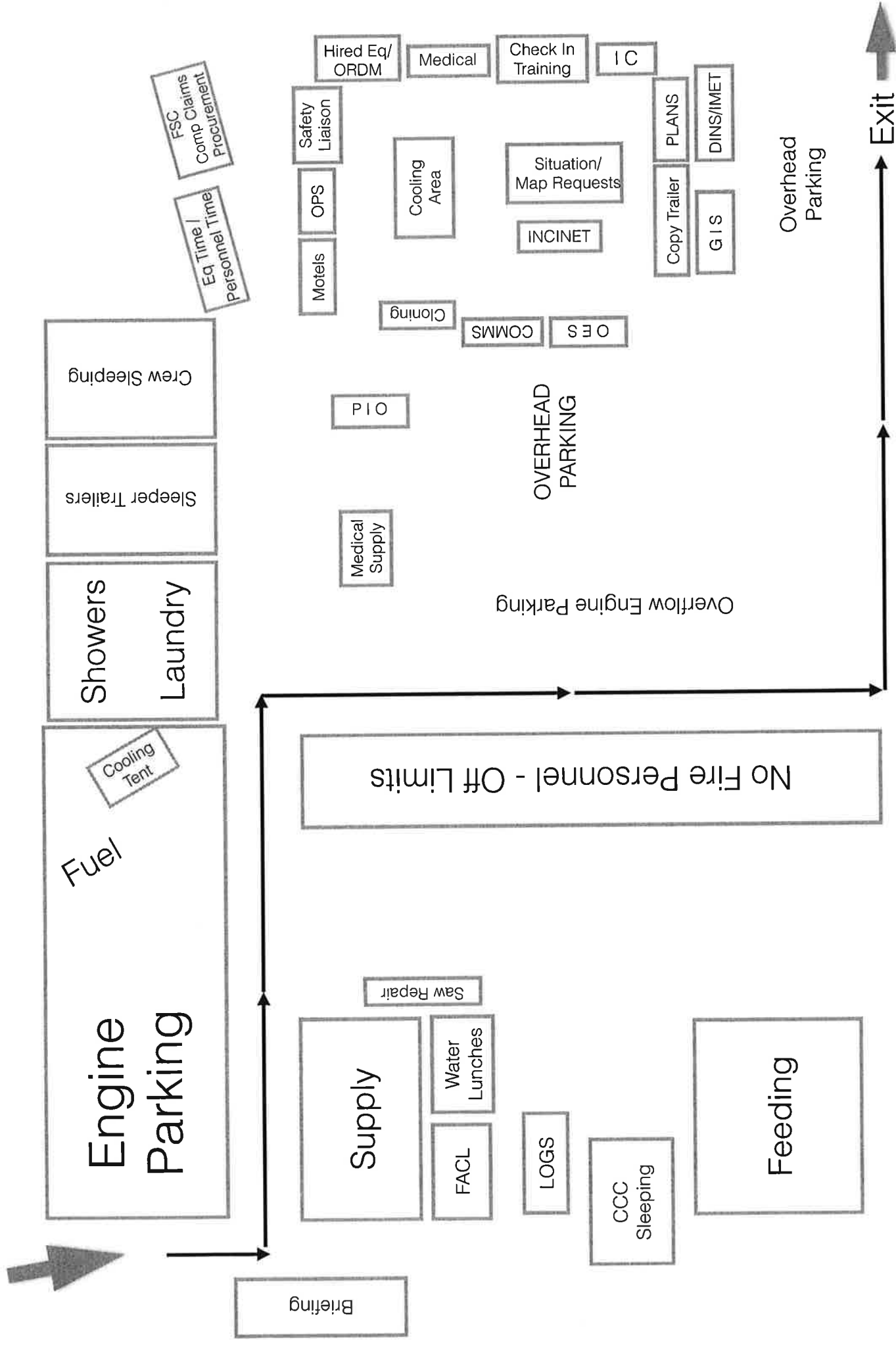
Richard Jenkins
Incident Archaeologist
Cell: (530) 949-8822

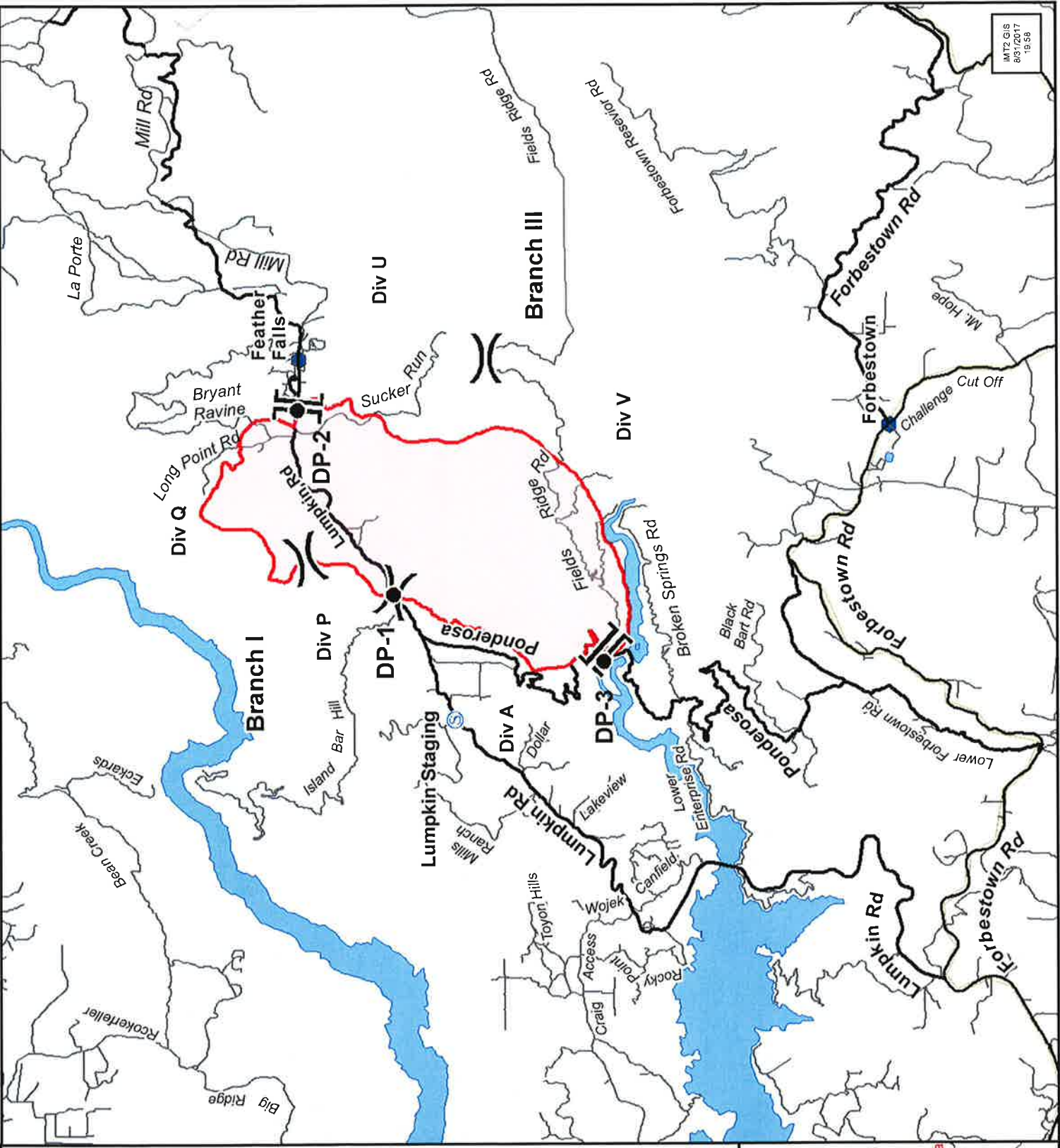
Ponderosa Fire Base Camp

September 1, 2017

North →
map not to scale

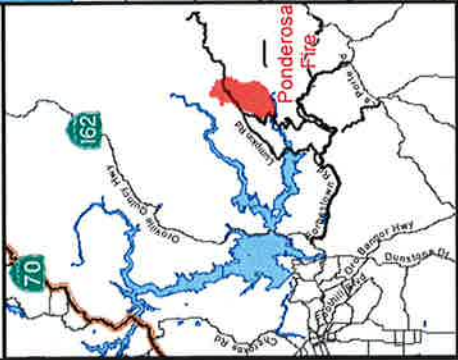
Entrance →





TRAVEL MAP
Ponderosa Incident
 CA-BTU-013737
 September 1, 2017

- Division
- Branch
- Drop Point
- Staging Area



UNIT LOG (ICS 214)

1. Incident Name: <p style="text-align: center;">Ponderosa</p>	2. Operational Period: Date From: 9/1/17 Date To: 9/2/17 Time From: 0700 Time To: 0700
---	--

3. Unit Name/Designators	4. Unit Leader (Name and ICS Position)
---------------------------------	---

5. Personnel Assigned/Designators

NAME	ICS POSITION	HOME BASE

6. Activity Log (Continue on Reverse)

TIME	MAJOR EVENTS

7. Prepared By:	Date/Time:
------------------------	-------------------

