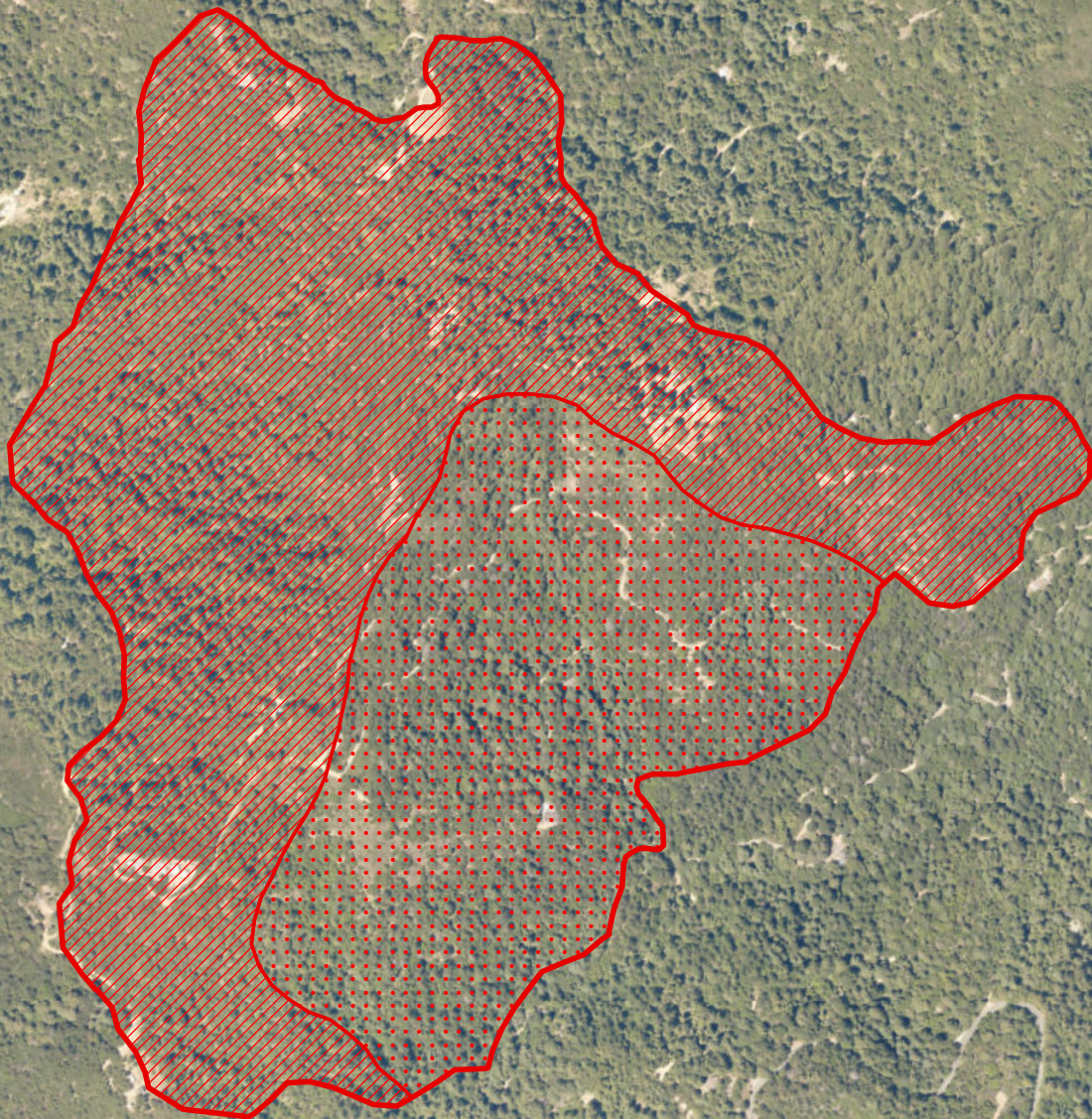


BEAR INCIDENT CA-CZU-007822





Infrared Interpretation
Date of Imagery: 10/18/17 0014 PDT
Heat Perimeter: 290 Acres



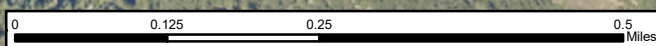
37° 11.405' N
122° 4.598' W
37° 11.378' N
122° 4.527' W



Infrared Legend

-  Heat Perimeter
-  Intense Heat
-  Scattered Heat
-  Isolated Heat Source

NAD 83 California Teale Albers
IRIN: Kurt Teuber



Source: Esri, DigitalGlobe, GeoEye, Earthstar Geographics, CNES/Airbus DS, USDA, USGS, AeroGRID, IGN, and the GIS User Community