

# Southern LNU Complex

## INCIDENT

CA-LNU-010105

## INCIDENT ACTION PLAN



### OPERATIONAL PERIOD

10/11/2017 0700

to

10/12/2017 0700





# INCIDENT OBJECTIVES (ICS 202)

<b>1. Incident Name:</b> Southern LNU Complex	<b>2. Operational Period:</b>	Date From: 10/11/2017 Time From: 0700	Date To: 10/12/2017 Time To: 0700
--	-------------------------------	--	--------------------------------------

**3. Objective(s):**

Management Objectives

- Fight fire aggressively while maintaining safe work practices to minimize threats to the public and emergency responders.
- Minimize damage to structures, private property, and other improvements in the fire area.
- Identify and protect cultural and heritage resources.
- Protect natural and agricultural resources, as feasible, safe, and appropriate.
- Continue to foster and maintain positive relationships with all local cooperators and stakeholders.
- Provide timely and accurate incident information.
- Maintain fiscal accountability, keeping costs commensurate with values at risk.

Control Objectives

**\*\*See ICS 202A, next page\*\***

**General Situational Awareness:**

- Steep and rugged terrain, critically dry and receptive fuel beds, active area for fire history and drought stressed trees.
- Watch out for downed power lines, trees, and erratic winds.

**5. Site Safety Plan Required?** Yes  No

**Approved Site Safety Plan(s) Located at:**

**6. Incident Action Plan**

<input checked="" type="checkbox"/> ICS 203	<input checked="" type="checkbox"/> ICS 215A	<input checked="" type="checkbox"/> Phone List	<input checked="" type="checkbox"/> Fire Suppression Repair Plan
<input checked="" type="checkbox"/> ICS 204	<input checked="" type="checkbox"/> ICS 220	<input checked="" type="checkbox"/> Training Message	<input checked="" type="checkbox"/>
<input checked="" type="checkbox"/> ICS 205	<input checked="" type="checkbox"/> Incident Map	<input type="checkbox"/> Travel Map	<input type="checkbox"/>
<input checked="" type="checkbox"/> ICS 206	<input checked="" type="checkbox"/> Weather Forecast	<input checked="" type="checkbox"/> Demob Plan	<input type="checkbox"/>
<input checked="" type="checkbox"/> ICS 208	<input checked="" type="checkbox"/> Fire Behavior	<input checked="" type="checkbox"/> Finance Message	<input checked="" type="checkbox"/> ICS 214

<b>7. Prepared By:</b> Buddy Bloxham	Position/Title: PSC	Signature:
<b>8. Approved by Incident Commander:</b>	Kevin Lawson	Signature:

ICS 202

# INCIDENT OBJECTIVES (ICS 202A)

<b>1. Incident Name:</b> Southern LNU Complex	<b>2. Operational Period:</b>	Date From: 10/11/2017	Date To: 10/12/2017
		Time From: 0700	Time To: 0700

### 3. Objective(s):

#### Control Objectives

##### **Atlas**

Keep the fire East of Highway 29

Keep the fire North of Jameson Canyon Road

Keep the fire West of Pleasant Valley Road

Keep the fire South of Pope Canyon Road

##### **Partrick**

Keep the fire North of Highway 12

Keep the fire West of Buhman Road

Keep the fire East of Agua Caliente Creek

Keep the fire South of Pickle Canyon

##### **Adobe / Norrbom / Nuns**

Keep the fire North of Sonoma City limits

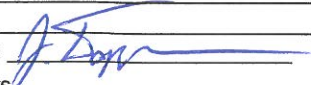
Keep the fire West of Dry Creek Road

Keep the fire South of Pythian Road

Keep the fire East of Petaluma Hill



## ORGANIZATION ASSIGNMENT LIST (ICS 203)

<b>1. Incident Name:</b> Southern LNU Complex		<b>2. Operational Period: Date From:</b> 10/11/2017		<b>Date To:</b> 10/12/2017	
		<b>Time From:</b> 0700		<b>Time To:</b> 0700	
<b>3. Incident Commander(s) and Command Staff:</b>			<b>7. Operation Section:</b>		
IC/UC's	K. Lawson / J. Donaldson		Chief	N. Schuler	
Deputy	B. Biermann / N. Truax (T)		Napa Dep. Ops	J. Ohs	
Safety Officer	M. Urquides		Sonoma Dep. Ops	S. Norman	
Information Officer	M. Smith		Night Ops	C. Waters	
Liaison Officer	D. Carreiro / J. Adams (T)		<b>Branch</b>	<b>II (Atlas)</b>	<b>Belya</b>
LE Liaison Officer	P. Fontanetta / S. White		Division/Group	A	
			Division/Group	B	C. Munk
			Division/Group	C	
<b>4. Agency/Organization Representatives:</b>			Division/Group	D	Sully
Agency/Organization	Name		Division/Group	E	J. Greenberg
CAL OES	D. Franklin		Division/Group	F	
Napa County OES	K. Twohey		Division/Group		
CDCR			<b>Branch</b>	<b>VI (Atlas)</b>	<b>G. Veyna</b>
CHP	C. Childs		Division/Group	Q	
PG & E	M. Weaver		Division/Group	X	
Sonoma County OES	Z. Hamill		Division/Group	Y	
			Division/Group	Z	
			<b>Branch</b>	<b>Cont. (Atlas)</b>	<b>M. Blankenheim</b>
			<b>Branch</b>	<b>X (Partrick)</b>	<b>J. Sanders</b>
			Division/Group	L	A. Savage
			Division/Group	M	
			Division/Group	N	
			<b>Branch</b>	<b>VII (Norrbom)</b>	<b>M. Mikelson</b>
			Division/Group	EE	S. Jerry
			Division/Group	TT	
<b>5. Planning Section:</b>			<b>Branch</b>	<b>V (Nuns)</b>	<b>Norrbom</b>
Chief	B. Bloxham		Division/Group	AA	
Deputy	J. Dapper		Division/Group	OO	
Resource Unit	G. Garcia / T. Henderson (T)		Division/Group	MM	P. Avila
Situation Unit	B. Glass / S. Johnson (T)		Division/Group	XX	
Documentation Unit			Division/Group		
Demobilization Unit	A. Klem		<b>Branch</b>	<b>I (Adobe)</b>	<b>B. Little</b>
GISS	C. Ingram		Division/Group	CC	
FBAN	J. Heggie		Division/Group	DD	
IMET	T. Wright		Division/Group	ZZ	
Training Tech Spec	R. Scott / M. Seybert (T)		<b>Branch</b>	<b>Infrastructure</b>	<b>C. Post</b>
			Staging Area		
			<b>Air Operations Branch</b>		<b>Director: Matt Stanford</b>
<b>6. Logistics Section</b>			Air Support Grp Sup	S. Hawkins	
Chief	P. Gallegos		Helibase Manager	J. Collins	
Supply Unit	J. Beckman / J. Ruedy (T)				
Facilities Unit			<b>8. Finance/Administration Section:</b>		
Ground Support Unit	S. Langston		Chief	R. Raines	
Hired Equipment Tech	A. Whitlock		Time Unit	P. Aguada	
Communications Unit	K. Johnson		Procurement Unit	K. Schaefer	
Medical Unit	K. Fortney		Comp/Claims Unit	P. Rotondaro	
Motel Tech Spec	D. English		Cost Unit	J. Forsberg	
<b>Prepared By: Name:</b> Jeff Dapper		<b>Position/Title:</b> PSC (T)		<b>Signature:</b> 	
<b>ICS 203</b>		<b>Date/Time:</b> 10/10/2017 2300 hours			



# Fire Weather Forecast



**FORECAST NO:** 1  
**PREDICTION FOR:** Wednesday  
**SHIFT DATE:** Oct 11, 2017  
**ISSUED:** 2000, October 10, 2017

**NAME OF FIRE:**  
**UNIT:**  
**Incident Meteorologist:**

**Southern LNU Complex**  
**Lake Napa**  
**Tom Wright** *TW*

**\*\*\* RED FLAG WARNING FOR STRONG WINDS AND LOW HUMIDITIES THROUGH THURSDAY \*\*\***

**DISCUSSION: Critical fire weather conditions through Thursday!** Strong high pressure to the north will produce strong north general winds this afternoon through Thursday. Winds will tend to be more northeasterly at night and northwesterly during the day. This combined with very low humidities during the day and poor to moderate recoveries at night will create very dangerous fire weather conditions for the next 36-48 hours.

## WEDNESDAY:

- WEATHER: Mostly sunny. Becoming breezy.
- WIND (20 FT):
  - Valley bottom: south 3-6 mph, becoming north 5-10 mph after 1000 hrs, then becoming north-northwest 10-15 mph with gusts to 25 mph after 1400 hrs.
  - Ridges: north-northeast 5-10 mph with gusts to 15 mph, becoming north-northwest 15-25 mph with gusts to 35 mph after 1400 hrs.
- MAX TEMPERATURES: 70-75.
- MIN RH: 14-19%
- CHANCE RAIN: 0%

## WEDNESDAY NIGHT:


- WEATHER: Mostly clear. Windy.
- WIND (20 FT):
  - Valley bottom: north 5-15 mph with gusts to 20 mph.
  - Ridges: North-northeast 20-30 mph with gusts to 40 mph.
- MIN TEMPERATURES: 45-50 Valleys to 60-65 Ridges
- HUMIDITY RECOVERIES: 30-35% Ridges to 40-45% Valleys
- CHANCE RAIN: 0%

## THURSDAY:

- WEATHER: Mostly sunny. Breezy.
- WIND (20 FT):
  - Valley bottom: north 5-15 mph with gusts to 20 mph becoming northwest and diminishing to 5-10 mph.
  - Ridges: North-northeast 20-30 mph with gusts to 40 mph becoming northwest and diminishing to 10-20 mph in the afternoon.
- MAX TEMPERATURES: 70-75.
- MIN RH: 10-17%
- CHANCE RAIN: 0%



# FIRE BEHAVIOR FORECAST

FORECAST NUMBER 2	TYPE OF FIRE Wildland
FIRE NAME Southern LNU Complex	OPERATIONAL PERIOD 10-11-2017 (24 HOUR SHIFT)
DATE ISSUED 10-10-17	TIME ISSUED 2000 HOURS
	SIGNED  Jon Heggie FBAN

## INPUTS

### WEATHER SUMMARY

**RED FLAG Warning** for today's operational period. Expect a northwest wind to develop over the fire area by midday, then transition to a northeast wind by 1400. Expected wind speed is 15-25 mph, but gust could reach up to 35 mph. High winds combined with low relative humidity will sustainably influence fire growth. This wind shift will likely start pushing the ongoing fires in new directions, especially any open line on the east or south side of the incidents.

**SEE WEATHER FORECAST**

## OUTPUTS

### FIRE BEHAVIOR

#### GENERAL

Probability of Ignition = 70-80%

Spotting Distance= 3/4 to 1.5 mile (strong winds)

Dead Fuel Moisture 4%

Live Fuel Moisture 57%

The fire is burning in Oak woodland with a heavy grass load. Pockets of brush contain large amounts of dead fuel due to previous years of drought. Live fuel moisture are at critical levels and the 100 hour fuels are at historic lows. Fire history in the area varies by location but a wet winter has provided an ample grass crop.

## SPECIFIC

#### Atlas

Exponential fire growth is to be expected to south and to the east. Situational awareness is imperative for all operations. Yesterday's operational period had significant fire growth with under cool temperatures and no substantial wind. Fire behavior could mimic conditions that were experienced in the first 24 hours of this incident. In areas where wind and slope align, fire spread will be critical and reaction time to safety zones **MUST** be a part of every plan. Long range spotting into receptive fuels will become established quickly and may compromise escape routes for you and the public. Look for the fire to continue to burn toward Lake Berryessa to the east and to south above Fairfax and the Green Valley area. Potential for structure loss will remain extremely high and life safety must be paramount. Expected rates of spread in the grass to be **215 ch/h** with flame lengths to be at **25 ft**. Rates of spread in the brush will be **140 ch/h** and flame lengths at **22 ft**. In wind, prone areas rates of spread and flame lengths could double predicted values.

#### Partrick, Nuns, Norrbom, Adobe

The potential for these fires to merge into one fire is extremely high this operational period. High winds combined with low relative humidity will assist these incidents to burn together under critical rates of spread. Situational awareness of all fires in the Sonoma Branch is imperative for all operations. Predicted winds will push the fire to the southwest in the into Sonoma and Vineburg and reaction time and escape routes must be considered on all operations. Potential for structure loss will remain extremely high and life safety must be paramount. Long range spotting will aid in fire growth and may compromise escape routes. Expected rates of spread in the grass to be **215 ch/h** with flame lengths to be at **25 ft**. Rates of spread in the brush will be **140 ch/h** and flame lengths at **22 ft**. In wind, prone areas rates of spread and flame lengths could double predicted values.

## AIR OPERATIONS

- Identify where crews are in the area before drops. Smoke may impair vision of crews working in the area
- High winds may make drops ineffective

## SAFETY

- Spots will establish rapidly so escape routes must be short and effective. 4x flame length separation distance minimum.
- When developing strategies and tactics, safety zones and escape routes you should be evaluating potential fire behavior (worst case scenario), not just observed fire behavior.
- Firefighter and public life safety will be the top priority for all emergency responders



# CAL FIRE INCIDENT MANAGEMENT TEAM 3



1. INCIDENT NAME:	2. DATE PREPARED:	3. TIME PREPARED:
Southern LNU Complex	10/10/2017	1800
4. PREPARED BY:	5. LEADER NAME:	6. OPERATIONAL PERIOD:
David Brockman SOF1(T)	Mike Urquides SOF1	10/11/2017 0700 TO 10/12/2017 0700

# SAFETY MESSAGE

## *ac·count·a·bil·i·ty*

*1. the obligation of an individual or organization to account for its activities, accept responsibility for them, and to disclose the results in a transparent manner.*

- RED FLAG WARNING IN THE AREA!
- Make sure everyone gets a briefing!
- Trees are weakened due to fire activity. Look Up, Look Down, and Around.
- Monitor your hydration/nutrition intake and keep adequate supplies of each.
- Drive defensively and expect the unexpected.
- Watch for hazards while working around structures (IRPG pg.13)
- Treat all downed power lines as energized. (IRPG pg.24)

## SNAG (Hazard Tree) SAFETY:

- S**ize up snag hazards in work area
- N**ever become complacent
- A**lways look up
- G**et weather reports
- S**cout out parking, work areas, and safety zones
- A**dvice co-workers of known hazards
- F**ace your hazards and take appropriate action
- E**xamine work area for other hazards
- T**ake extra caution around heavy equipment
- Y**ou are responsible for your own safety

- Lookouts
- Communications
- Escape Routes
- Safety Zones


CAL FIRE INCIDENT MANAGEMENT TEAM 3 SOF1 Mike Urquides





# INCIDENT RISK ANALYSIS ICS 215A



BRANCH	HAZARDOUS ACTIONS/ CONDITIONS	MITIGATIONS/WARNINGS/REMEDIES
ALL	<b>FIRE AND DROUGHT WEAKENED TREES/SNAG HAZARDS</b>	<ul style="list-style-type: none"> <li>Follow Hazard Tree Safety Guidelines (IRPG p. 22).</li> <li>Many of the trees within the fire area and along roadways are stressed due to prolonged drought conditions and extended burn times.</li> </ul>
ALL	<b>HAZARDOUS STRUCTURE</b>	<ul style="list-style-type: none"> <li>Follow Structure Size Up (IRPG p.13)</li> <li>Be aware of propane tank / natural gas hazards.</li> </ul>
ALL	<b>DRIVING HAZARDS</b>	<ul style="list-style-type: none"> <li><b>Watch your speeds.</b></li> <li>Drive defensively! Expect the unexpected.</li> <li>Watch for road degradation and dusty conditions.</li> <li>Be aware of debris in the roadways from rollout and suppression operations.</li> </ul>
ALL	<b>WEATHER</b>	<ul style="list-style-type: none"> <li><b>RED FLAG WARNING FOR THE AREA!</b></li> <li>Be aware of changing wind conditions.</li> <li>Watch for changing weather conditions.</li> </ul>
ALL	<b>PERSONNEL SAFETY</b>	<ul style="list-style-type: none"> <li>All personnel are responsible for their personal safety.</li> <li>Immediately report any suspicious activity.</li> <li>Be sure to wear all required PPE while on the fire line.</li> </ul>
ALL	<b>POWER LINES</b>	<ul style="list-style-type: none"> <li>Follow Power Line safety guidelines (IRPG pg.24)</li> <li>Treat all downed power lines as energized.</li> <li>Utilize PG&amp;E resources to handle and remove power lines.</li> </ul>
ALL	<b>HYDRATION</b>	<ul style="list-style-type: none"> <li>Drink water before, during and after each shift.</li> <li>Be alert for signs of heat stress in yourself and others.</li> </ul>
ALL	<b>FATIGUE</b>	<ul style="list-style-type: none"> <li>Monitor incoming resources for level of fatigue.</li> <li>Provide sufficient rest during the work cycle.</li> </ul>
ALL	<b>CIVILIAN PRESENCE</b>	<ul style="list-style-type: none"> <li>Be aware that civilians continue to occupy the fire area.</li> <li>Watch for residents in and around the area.</li> </ul>
ALL	<b>COMMUNICATIONS</b>	<ul style="list-style-type: none"> <li>Check the communication plan for frequency assignments.</li> <li>Be clear and concise when talking on the radio.</li> <li>Use human repeaters as needed.</li> </ul>
ALL	<b>BRIEFINGS</b>	<ul style="list-style-type: none"> <li>Make sure <b>everyone</b> gets a briefing on the plan for the day.</li> <li>Document this on your ICS 214.</li> </ul>
ALL	<b>LCES</b>	<ul style="list-style-type: none"> <li>Ensure that LCES is being utilized.</li> </ul>
ALL	<b>HELICOPTER AWARENESS</b>	<ul style="list-style-type: none"> <li>Be aware of rotor wash when working near helicopters.</li> <li>Understand that hazardous trees may react to helicopters overhead.</li> <li>Stay clear of helicopter landing zones.</li> <li>Monitor assigned aircraft frequencies.</li> </ul>
ALL	<b>HEAVY EQUIPMENT</b>	<ul style="list-style-type: none"> <li><b>Watch out for heavy equipment traffic!</b></li> <li>Be aware of heavy equipment working in the area.</li> <li>Be watchful around heavy equipment, they may not see you.</li> </ul>
<b>Incident Name: Southern LNU Complex</b>		Date Prepared: 10/10/2017 Prepared by: David Brockman SOF1(T) 
		Operational Period: 10/11/2017 – 10/12/2017  0700-0700

*In readiness is all*















# ASSIGNMENT LIST (ICS 204)

CONTROLLED UNCLASSIFIED INFORMATION//BASIC

<b>1. Incident Name:</b> Southern LNU Complex CA-LNU-010105	<b>2. Operational Period:</b> Date From: 10/11/17      Date To: 10/12/17 Time From: 0700              Time To: 0700	<b>3.</b>  Branch: <b>II (Atlas)</b>  Div/Group: <b>E</b>  <b>Echo</b>
<b>4. Operations Personnel:</b> Operations Section Chief: <b>N. Schuler</b> <b>Night Ops: C. Waters</b> Branch Director: <b>Belya</b> Branch FOBS: M. Thau / Division/Group Supervisor: <b>J. Greenberg</b> C. Baldwin (T)		

<b>5. Resources Assigned:                      ** Resources Below in Bold are 12 Hour **</b>				Reporting Location, Special Equipment, Remarks, Notes, and Information	
Resource Identifier	Leader	Personnel	Request #	Time	Location
<b>STC SHF 3675C</b>	<b>Carter, Mike</b>	<b>27</b>	<b>E-1</b>	<b>0700-1900</b>	<b>DP 12</b>
STC CZU 9171C	Dellamonica, Jake	20	E-4	0700-0700	DP 12
STC				0700-0700	DP 12
ENG VLJ 24	Strom, Eric	4	E-32	0700-0700	DP 12
STG				0700-0700	DP 12
STG				0700-0700	DP 12
STG				0700-0700	DP 12
STL TUU 9416L	Ray, Chuck	6	E-14	0700-0700	DP 12
STL				0700-0700	DP 12
W/T PVT Waterdogg	Hopkins, Mark	2	E-38	0700-0700	DP 12
W/T ACY 11				0700-0700	DP 12

**6. Work Assignments:**

- Protect life
- Structure defense
- Perimeter control
- Validate perimeter

**7. Special Instructions:**

**8. Communications** (radio and/or phone contact numbers needed for this assignment):

Name	Ch	Function	Rx Freq	Rx Tone	Tx Freq	Tx Tone	Notes
OES 2B	1	COMMAND	154.2200		159.1950	146.2	SEE ICS 205 FOR ADDITIONAL FREQUENCIES
NIFC T3	6	TACTICAL	168.6000		168.6000		DIVISIONS E / F
CALCORD	14	MEDICAL	156.0750	156.7	156.0750	156.7	
AIR TO GROUND	15	TACTICAL	166.6750		166.6750		NIFC AIR TO GROUND GRP 21 CH.20
GUARD	16	EMERGENCY	168.6250		168.6250	110.9	EMERGENCY USE ONLY

**9. Prepared by: Name:** Topher Henderson      **Pos/Title:** RESL (T)  
**ICS 204**      **Date/Time:** 10/10/2017 2300 hours      **Signature:**

CONTROLLED UNCLASSIFIED INFORMATION//BASIC

# ASSIGNMENT LIST (ICS 204)

CONTROLLED UNCLASSIFIED INFORMATION//BASIC

<b>1. Incident Name:</b> Southern LNU Complex CA-LNU-010105	<b>2. Operational Period:</b> Date From: 10/11/17      Date To: 10/12/17 Time From: 0700              Time To: 0700	<b>3.</b>  Branch: <b>II (Atlas)</b>  Div/Group: <b>F</b>  <b>Foxtrot</b>
<b>4. Operations Personnel:</b> Operations Section Chief: <b>N. Schuler</b> <b>Night Ops: C. Waters</b> Branch Director: <b>Belya</b> Branch FOBS: M. Thau / Division/Group Supervisor:                      C. Baldwin (T)		

5. Resources Assigned: <b>** Resources Below in Bold are 12 Hour **</b>				Reporting Location, Special Equipment, Remarks, Notes, and Information	
Resource Identifier	Leader	Personnel	Request #	Time	Location
STC NVDEMC 1	Williams, Seth	17	E-6	0700-0700	DP 12
STC				0700-0700	DP 12
STC				0700-0700	DP 12
ENG MTV OES 290	Roth, Erik	4	E-34	0700-0700	DP 12
STG				0700-0700	DP 12
STG				0700-0700	DP 12
STG				0700-0700	DP 12
STL				0700-0700	DP 12
DOZ PVT C&C Assoc	Casarotti, Rich	2	E-49	0700-0700	DP 12
DOZ PVT A/T Wanzer	Wanzer, Anthony	2	E-46	0700-0700	DP 12
W/T 3895				0700-0700	DP 12
W/T 7891				0700-0700	DP 12

**6. Work Assignments:**

- Protect life
- Structure defense
- Perimeter control
- Validate perimeter

**7. Special Instructions:**

**8. Communications** (radio and/or phone contact numbers needed for this assignment):

Name	Ch	Function	Rx Freq	Rx Tone	Tx Freq	Tx Tone	Notes
OES 2B	1	COMMAND	154.2200		159.1950	146.2	<b>SEE ICS 205 FOR ADDITIONAL FREQUENCIES</b>
NIFC T3	6	TACTICAL	168.6000		168.6000		DIVISIONS E / F
CALCORD	14	MEDICAL	156.0750	156.7	156.0750	156.7	
AIR TO GROUND	15	TACTICAL	166.6750		166.6750		NIFC AIR TO GROUND GRP 21 CH.20
GUARD	16	EMERGENCY	168.6250		168.6250	110.9	EMERGENCY USE ONLY

**9. Prepared by: Name:** Topher Henderson      Pos/Title: RESL (T)      Signature:

**ICS 204**      Date/Time: 10/10/2017 2300 hours

CONTROLLED UNCLASSIFIED INFORMATION//BASIC



# ASSIGNMENT LIST (ICS 204)

CONTROLLED UNCLASSIFIED INFORMATION/BASIC

<b>1. Incident Name:</b> Southern LNU Complex CA-LNU-010105		<b>2. Operational Period:</b> Date From: 10/11/17      Date To: 10/12/17 Time From: 0700              Time To: 0700			<b>3.</b>  Branch: <b>VI (Atlas)</b>  Div/Group: <b>Q</b>  <b>Quebec</b>		
<b>4. Operations Personnel:</b> Operations Section Chief: <b>N. Schuler</b> <b>Night Ops: C. Waters</b> Branch Director: <b>G. Veyna</b> Division/Group Supervisor:							
<b>5. Resources Assigned:</b> <b>** Resources Below in Bold are 12 Hour **</b>					Reporting Location, Special Equipment, Remarks, Notes, and Information Time                      Location		
Resource Identifier	Leader	Personnel	Request #				
STC				0700-0700 ICP			
STC				0700-0700 ICP			
STC				0700-0700 ICP			
ENG SCZ 3114	Muhly, Cody	4	E-28	0700-0700 ICP			
ENG HAY 22	Matthews, Jared	4	E-36	0700-0700 ICP			
ENG HTF 315	Farrington, Taylor	5	E-14	0700-0700 ICP			
ENG GRN 8432	Krenkel, James	4	E-26	0700-0700 ICP			
<b>ENG PVT 25</b>	<b>Kennedy, Sidney</b>	<b>3</b>	<b>E-216</b>	<b>0700-1900 ICP</b>			
CRW DELTA 6				0700-0700 ICP			
<b>CRW PVT Firestorm-1</b>	<b>Lowe, Graham</b>	<b>20</b>	<b>C-11</b>	<b>0700-1900 ICP</b>			
<b>CRW SRF Ukunom IHC</b>	<b>Nelms, Nathan</b>	<b>19</b>	<b>C-16</b>	<b>0700-1900 ICP</b>			
CRW				0700-0700 ICP			
DOZ PVT Tehama Transport	Adams, Toby	2	E-51	0700-0700 ICP			
DOZ 1445				0700-0700 ICP			
W/T PVT Tehama Transport	Ashevin, Robert	2	E-94	0700-0700 ICP			
HEQB	Faras, Nicholas	1	O-235	0700-0700 ICP			
<b>6. Work Assignments:</b> - Protect life - Structure defense - Perimeter control - Validate perimeter							
<b>7. Special Instructions:</b>							
<b>8. Communications</b> (radio and/or phone contact numbers needed for this assignment):							
Name	Ch	Function	Rx Freq	Rx Tone	Tx Freq	Tx Tone	Notes
OES 2B	1	COMMAND	154.2200		159.1950	146.2	SEE ICS 205 FOR ADDITIONAL FREQUENCIES
VFIRE 24	7	TACTICAL	154.2725	156.7	154.2725	156.7	DIVISIONS Q / X / Y / Z
CALCORD	14	MEDICAL	156.0750	156.7	156.0750	156.7	
AIR TO GROUND	15	TACTICAL	166.6750		166.6750		NIFC AIR TO GROUND GRP 21 CH.20
GUARD	16	EMERGENCY	168.6250		168.6250	110.9	EMERGENCY USE ONLY
<b>9. Prepared by: Name:</b> Topher Henderson      Pos/Title:      RESL (T)					Signature:		
<b>ICS 204</b> Date/Time: 10/10/2017      2300 hours							

CONTROLLED UNCLASSIFIED INFORMATION/BASIC











# ASSIGNMENT LIST (ICS 204)

CONTROLLED UNCLASSIFIED INFORMATION/BASIC

<b>1. Incident Name:</b> Southern LNU Complex CA-LNU-010105	<b>2. Operational Period:</b> Date From: 10/11/17      Date To: 10/12/17 Time From: 0700              Time To: 0700	<b>3.</b>  Branch: <b>Cont. (Atlas)</b>  Div/Group:  <p style="text-align: right;"><b>Page 1 of 2</b></p>
<b>4. Operations Personnel:</b> Operations Section Chief: <b>N. Schuler</b> <b>Night Ops: C. Waters</b> Branch Director: <b>M. Blankenheim</b>  Division/Group Supervisor:		

<b>5. Resources Assigned:</b>				<b>** Resources Below in Bold are 12 Hour **</b>		Reporting Location, Special Equipment, Remarks, Notes, and Information	
Resource Identifier	Leader	Personnel	Request #	Time	Location		
STC				0700-0700	DP 12		
STC				0700-0700	DP 12		
STC				0700-0700	DP 12		
STC				0700-0700	DP 12		
STC				0700-0700	DP 12		
STC				0700-0700	DP 12		
STC				0700-0700	DP 12		
STC				0700-0700	DP 12		
STC				0700-0700	DP 12		
STC				0700-0700	DP 12		
STC				0700-0700	DP 12		
STG				0700-0700	DP 12		
STG				0700-0700	DP 12		
STG				0700-0700	DP 12		
STG				0700-0700	DP 12		
STG				0700-0700	DP 12		
STG				0700-0700	DP 12		
STG				0700-0700	DP 12		
STG				0700-0700	DP 12		
STG				0700-0700	DP 12		

**6. Work Assignments:**

- Identify and construct contingency line
- Validate based on current and expected fire behavior

**7. Special Instructions:**

**8. Communications** (radio and/or phone contact numbers needed for this assignment):

Name	Ch	Function	Rx Freq	Rx Tone	Tx Freq	Tx Tone	Notes
OES 2B	1	COMMAND	154.2200		159.1950	146.2	SEE ICS 205 FOR ADDITIONAL FREQUENCIES
VTAC13	12	TACTICAL	158.7375	156.7	158.7375	156.7	ATLAS CONTINGENCY
CALCORD	14	MEDICAL	156.0750	156.7	156.0750	156.7	
AIR TO GROUND	15	TACTICAL	166.6750		166.6750		NIFC AIR TO GROUND GRP 21 CH.20
GUARD	16	EMERGENCY	168.6250		168.6250	110.9	EMERGENCY USE ONLY

**9. Prepared by: Name:** Tophir Henderson      **Pos/Title:** RESL (T)      **Signature:**

**ICS 204**      **Date/Time:** 10/10/2017 2300 hours

CONTROLLED UNCLASSIFIED INFORMATION/BASIC



























# ASSIGNMENT LIST (ICS 204)

CONTROLLED UNCLASSIFIED INFORMATION//BASIC

<b>1. Incident Name:</b> Southern LNU Complex CA-LNU-010105		<b>2. Operational Period:</b> Date From: 10/11/17    Date To: 10/12/17 Time From: 0700    Time To: 0700			<b>3.</b>  Branch: <b>V (Nuns)</b>  Div/Group: <b>MM</b> <b>Mike-Mike</b>		
<b>4. Operations Personnel:</b> Operations Section Chief: <b>N. Schuler</b> <b>Night Ops: C. Waters</b> Branch Director: <b>Norrbom</b> Branch FOBS: <b>B. Goff</b> Division/Group Supervisor: <b>P. Avila</b>							
<b>5. Resources Assigned:</b> <b>** Resources Below in Bold are 12 Hour **</b>							
Resource Identifier	Leader	Personnel	Request #	Reporting Location, Special Equipment, Remarks, Notes, and Information Time                      Location			
STA				0700-0700    DP 50			
STC 9150C				0700-0700    DP 50			
STC				0700-0700    DP 50			
STC	Martinez, Anthony	4	E-33	0700-0700    DP 50			
ENG SFR 9	McCollum, Matt	4	E-29	0700-0700    DP 50			
ENG WTS 4413	O'Briand, Gordon	4	E-38	0700-0700    DP 50			
ENG ALA 01				0700-0700    DP 50			
ENG 9383				0700-0700    DP 50			
ENG 3325				0700-0700    DP 50			
ENG 3671				0700-0700    DP 50			
STG				0700-0700    DP 50			
<b>CRW STF Groveland Crew 4</b>	<b>Laeng, Patrick</b>	<b>18</b>	<b>C-12</b>	<b>0700-1900    DP 50</b>			
DOZ 1540				0700-0700    DP 50			
DOZ PVT Dunlap Farms	Dunlap, William	2	E-48	0700-0700    DP 50			
W/T				0700-0700    DP 50			
<b>6. Work Assignments:</b> - Protect life - Structure defense - Perimeter control - Validate perimeter							
<b>7. Special Instructions:</b>							
<b>8. Communications</b> (radio and/or phone contact numbers needed for this assignment):							
Name	Ch	Function	Rx Freq	Rx Tone	Tx Freq	Tx Tone	Notes
OES 2B	1	COMMAND	154.2200		159.1950	146.2	SEE ICS 205 FOR ADDITIONAL FREQUENCIES
CDF T30	10	TACTICAL	151.3925	192.8	151.3925	192.8	DIVISIONS AA / OO / MM / XX
CALCORD	14	MEDICAL	156.0750	156.7	156.0750	156.7	
AIR TO GROUND	15	TACTICAL	166.6750		166.6750		NIFC AIR TO GROUND GRP 21 CH.20
GUARD	16	EMERGENCY	168.6250		168.6250	110.9	EMERGENCY USE ONLY
<b>9. Prepared by: Name:</b> Topher Henderson    Pos/Title:    RESL (T) <b>ICS 204</b> Date/Time: 10/10/2017    2300 hours    Signature:							

CONTROLLED UNCLASSIFIED INFORMATION//BASIC





# ASSIGNMENT LIST (ICS 204)

CONTROLLED UNCLASSIFIED INFORMATION//BASIC

<b>1. Incident Name:</b> Southern LNU Complex CA-LNU-010105	<b>2. Operational Period:</b> Date From: 10/11/17      Date To: 10/12/17 Time From: 0700              Time To: 0700	<b>3.</b>  Branch: <b>I (Adobe)</b>  Div/Group: <b>CC</b>  <b>Charlie-Charlie</b> Page 1 of 2
<b>4. Operations Personnel:</b> Operations Section Chief: <b>N. Schuler</b> <b>Night Ops: C. Waters</b> Branch Director: <b>B. Little</b> Branch FOBS: S. Bullock Division/Group Supervisor:		

<b>5. Resources Assigned:</b>				<b>** Resources Below in Bold are 12 Hour **</b>		Reporting Location, Special Equipment, Remarks, Notes, and Information	
Resource Identifier	Leader	Personnel	Request #	Time	Location		
STC				0700-0700	DP 51		
ENG 3181				0700-0700	DP 51		
ENG 3182				0700-0700	DP 51		
ENG 1477				0700-0700	DP 51		
ENG 1461				0700-0700	DP 51		
ENG 7562				0700-0700	DP 51		
ENG 6				0700-0700	DP 51		
ENG 3873				0700-0700	DP 51		
ENG 9471				0700-0700	DP 51		
ENG 9382				0700-0700	DP 51		
STG				0700-0700	DP 51		
STG				0700-0700	DP 51		
STG				0700-0700	DP 51		
STL SBC 9322L	Linane, Mark	7	E-68	0700-0700	DP 51		
STL				0700-0700	DP 51		
STL				0700-0700	DP 51		
W/T 1590				0700-0700	DP 51		
W/T 9496				0700-0700	DP 51		

- 6. Work Assignments:**
- Protect life
  - Structure defense
  - Perimeter control
  - Validate perimeter

**7. Special Instructions:**

**8. Communications** (radio and/or phone contact numbers needed for this assignment):

Name	Ch	Function	Rx Freq	Rx Tone	Tx Freq	Tx Tone	Notes
OES 2B	1	COMMAND	154.2200		159.1950	146.2	SEE ICS 205 FOR ADDITIONAL FREQUENCIES
VTAC12	11	TACTICAL	154.4525	156.7	154.4525	156.7	DIVISIONS CC / DD / ZZ
CALCORD	14	MEDICAL	156.0750	156.7	156.0750	156.7	
AIR TO GROUND	15	TACTICAL	166.6750		166.6750		NIFC AIR TO GROUND GRP 21 CH.20
GUARD	16	EMERGENCY	168.6250		168.6250	110.9	EMERGENCY USE ONLY

**9. Prepared by: Name:** Tophir Henderson      Pos/Title: RESL (T)      Signature:

**ICS 204**      Date/Time: 10/10/2017 2300 hours

CONTROLLED UNCLASSIFIED INFORMATION//BASIC













# ASSIGNMENT LIST (ICS 204)

CONTROLLED UNCLASSIFIED INFORMATION//BASIC

<b>1. Incident Name:</b> Southern LNU Complex CA-LNU-010105	<b>2. Operational Period:</b> Date From: 10/11/17      Date To: 10/12/17 Time From: 0700              Time To: 0700	<b>3.</b>  Branch: <b>I (Adobe)</b>  Div/Group: <b>ZZ</b>  <b>Zulu-Zulu</b> Page 1 of 2
<b>4. Operations Personnel:</b> Operations Section Chief: <b>N. Schuler</b> <b>Night Ops: C. Waters</b> Branch Director: <b>B. Little</b> Branch FOBS: S. Bullock Division/Group Supervisor:		

<b>5. Resources Assigned:</b>				<b>** Resources Below in Bold are 12 Hour **</b>		Reporting Location, Special Equipment, Remarks, Notes, and Information	
Resource Identifier	Leader	Personnel	Request #	Time	Location		
STC				0700-0700	DP 51		
STC				0700-0700	DP 51		
ENG 9105				0700-0700	DP 51		
ENG 9160				0700-0700	DP 51		
ENG 9162				0700-0700	DP 51		
ENG 9381				0700-0700	DP 51		
ENG 9985				0700-0700	DP 51		
ENG 9981				0700-0700	DP 51		
ENG 10				0700-0700	DP 51		
ENG 1479				0700-0700	DP 51		
ENG 217				0700-0700	DP 51		
ENG 1489				0700-0700	DP 51		
STG				0700-0700	DP 51		
STG				0700-0700	DP 51		
STG				0700-0700	DP 51		
STG				0700-0700	DP 51		
STG				0700-0700	DP 51		
STL				0700-0700	DP 51		

**6. Work Assignments:**

- Protect life
- Structure defense
- Perimeter control
- Validate perimeter

**7. Special Instructions:**

**8. Communications** (radio and/or phone contact numbers needed for this assignment):

Name	Ch	Function	Rx Freq	Rx Tone	Tx Freq	Tx Tone	Notes
OES 2B	1	COMMAND	154.2200		159.1950	146.2	SEE ICS 205 FOR ADDITIONAL FREQUENCIES
VTAC12	11	TACTICAL	154.4525	156.7	154.4525	156.7	DIVISIONS CC / DD / ZZ
CALCORD	14	MEDICAL	156.0750	156.7	156.0750	156.7	
AIR TO GROUND	15	TACTICAL	166.6750		166.6750		NIFC AIR TO GROUND GRP 21 CH.20
GUARD	16	EMERGENCY	168.6250		168.6250	110.9	EMERGENCY USE ONLY

**9. Prepared by: Name:** Topher Henderson      Pos/Title: RESL (T)      Signature:   
**ICS 204**      Date/Time: 10/10/2017 2300 hours

CONTROLLED UNCLASSIFIED INFORMATION//BASIC





# ASSIGNMENT LIST (ICS 204)

CONTROLLED UNCLASSIFIED INFORMATION//BASIC

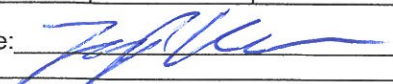
<b>1. Incident Name:</b> Southern LNU Complex CA-LNU-010105	<b>2. Operational Period:</b> Date From: 10/11/17     Date To: 10/12/17 Time From: 0700     Time To: 0700	<b>3.</b> Branch: <b>Infrastructure</b> Div/Group:
<b>4. Operations Personnel:</b> Operations Section Chief: <b>N. Schuler</b> <b>Night Ops: C. Waters</b> Branch Director: <b>C. Post</b> Division/Group Supervisor:		

<b>5. Resources Assigned:</b>				<b>** Resources Below in Bold are 12 Hour **</b>		Reporting Location, Special Equipment, Remarks, Notes, and Information	
Resource Identifier	Leader	Personnel	Request #	Time	Location		
<b>FOBS</b>				<b>0700-1900</b>	<b>ICP</b>		
<b>FOBS</b>				<b>0700-1900</b>	<b>ICP</b>		
<b>FOBS</b>				<b>0700-1900</b>	<b>ICP</b>		

**6. Work Assignments:**  
Infrastructure repair and coordination

**7. Special Instructions:**

<b>8. Communications</b> (radio and/or phone contact numbers needed for this assignment):							
Name	Ch	Function	Rx Freq	Rx Tone	Tx Freq	Tx Tone	Notes
OES 2B	1	COMMAND	154.2200		159.1950	146.2	SEE ICS 205 FOR ADDITIONAL FREQUENCIES
VTAC13	12	TACTICAL	158.7375	156.7	158.7375	156.7	ATLAS CONTINGENCY
CALCORD	14	MEDICAL	156.0750	156.7	156.0750	156.7	
AIR TO GROUND	15	TACTICAL	166.6750		166.6750		NIFC AIR TO GROUND GRP 21 CH.20
GUARD	16	EMERGENCY	168.6250		168.6250	110.9	EMERGENCY USE ONLY

**9. Prepared by: Name:** Topher Henderson     Pos/Title: RESL (T)  
**ICS 204**     Date/Time: 10/10/2017 2300 hours     Signature: 

CONTROLLED UNCLASSIFIED INFORMATION//BASIC

# ASSIGNMENT LIST (ICS 204)

CONTROLLED UNCLASSIFIED INFORMATION//BASIC

<b>1. Incident Name:</b> Southern LNU Complex CA-LNU-010105	<b>2. Operational Period:</b> Date From: 10/11/17     Date To: 10/12/17 Time From: 0700            Time To: 0700	<b>3.</b>  Branch:  Staging
---	--	---

<b>4. Operations Personnel:</b> Operations Section Chief: <b>N. Schuler</b> <b>Night Ops: C. Waters</b> Branch Director: Division/Group Supervisor:	
--	--

<b>5. Resources Assigned:</b>				<b>** Resources Below in Bold are 12 Hour **</b>		Reporting Location, Special Equipment, Remarks, Notes, and Information	
Resource Identifier	Leader	Personnel	Request #	Time	Location		
				0700-0700	ICP		

<b>6. Work Assignments:</b> - Maintain a 3-minute response time
--

<b>7. Special Instructions:</b>
---------------------------------

<b>8. Communications</b> (radio and/or phone contact numbers needed for this assignment):							
Name	Ch	Function	Rx Freq	Rx Tone	Tx Freq	Tx Tone	Notes
OES 2B	1	COMMAND	154.2200		159.1950	146.2	SEE ICS 205 FOR ADDITIONAL FREQUENCIES
CALCORD	14	MEDICAL	156.0750	156.7	156.0750	156.7	
AIR TO GROUND	15	TACTICAL	166.6750		166.6750		NIFC AIR TO GROUND GRP 21 CH.20
GUARD	16	EMERGENCY	168.6250		168.6250	110.9	EMERGENCY USE ONLY

<b>9. Prepared by: Name:</b>	Tophier Henderson	Pos/Title:	RESL (T)	Signature:
<b>ICS 204</b>	Date/Time:		10/10/2017 2300 hours	

CONTROLLED UNCLASSIFIED INFORMATION//BASIC















<b>1. INCIDENT NAME:</b> Southern LNU	<b>2. PREPARED BY:</b> C. Willson	<b>3. # OF COPIES NEEDED:</b>
<b>4. REMARKS (Safety Notes, Hazards, Air Operations Special Equipment, etc.):</b> Track all dip sites and the amount of water taken from the dip site, and track which Branch missions were flown on. Ensure your load calcs reflect the increased temperatures. GPS settings: hddd°mm.mmm' with WGS 84 selected as the map datum. Angwin Helibase - N 38° 34.375 X W 122° 26.090 Frequencies may change at the discretion of NOPS. 1 Air Attack for the Atlas & 1 Air Attack for the rest of the complex.		<b>5. TFR: On Order</b> Center: Latitude: Longitude: Radius:

7. FREQUENCIES			8. FIXED WING		
Phone	AM	FM	AIRTANKERS	# Avail / Type/ Make-Model / FAA N# / Base(s)	
AOBD Matt Stanford	951.545.8205	AIR/AIR FW:		By request	
ASGS(T) Chris Willson	530.448.2408	AIR/AIR RW:	128.250		
HEMB Jared Collins	858.353.6261	AIR BRIEFING	Unassigned	C-1 By request	
		AIR/GROUND TACTICAL	NIFC A/G 166.6750	By Request	
		DECK:	163.1000	On Order	
		TOLC:	123.0000		
		COMMAND:	See IAP Communications Plan		
Dispatch Aircraft Desk		Air Guard	168.625 Tone 1	RESCUE SHIP: Guard 828 & 840. Contact Tim Shiffer @ 650.245.1715 for activation. Being shared by all Complex's.	

9. HELICOPTERS (Use Additional Sheets as Necessary)													
FAA N#	TY	MAKE/MODEL	BASE	AVAIL	START	REMARKS	FAA N#	TY	MAKE/MODEL	BASE	AVAIL	START	REMARKS
917	1	S61V	Angwin	0830	0800	Restricted	8PJ	2	Bell UH-1H	Angwin	0830	0800	Restricted
4PJ	1	Blackhawk	Angwin	0830	0800	Restricted	9PJ	2	Bell UH-1H	Angwin	0830	0800	Restricted
71CH	1	Chinook	Angwin	0830	0800	Restricted	2AH	2	Bell 212	Angwin	0830	0800	Standard
Guard 831	1	Blackhawk	Mather	0830	0800	Standard	3HL	2	Bell 212	Angwin	0830	0800	Standard
Guard 832	1	Blackhawk	Mather	0830	0800	Standard	1SG	3	Bell 206	Angwin	0830	0800	Standard
35S	1	Sky Crane	Vacavill	0830	0800	Restricted	88B	3	Bell 206	Angwin	0830	0800	Standard
C104	2	Bell UH-1H	Angwin	0830	0800	Standard	7PJ	3	Bell 407	Angwin	0830	0800	Standard
1GH	2	Bell UH-1H	Angwin	0830	0800	Restricted	6AS	3	Bell 407	Angwin	0830	0800	Standard

10. TASK/MISSION/ASSIGNMENT (Use ICS-220a if additional space needed; Type/Function includes: Air Tactical, Retardant, Recon, Personnel Transport, Water Dropping, etc.)			
TYPE/FUNCTION	NAME OF PERSONNEL OR CARGO (if applicable) OR INSTRUCTIONS FOR TACTICAL AIRCRAFT	MISSION START	FLY FROM FLY TO
Recon			
Water Drops/Retard.			
Personnel Transport			
Logistics			
Priorities			
Rescue			

*North School*







# MEDICAL PLAN

1. INCIDENT NAME  
**SOUTHERN LNU  
 COMPLEX  
 CA-LNU-010105**

2. DATE  
 PREPARED  
 10/10/2017

3. TIME  
 PREPARED  
 1900  
 HOURS

4. OPERATIONAL PERIOD  
 10/11/2017  
 0700-0700

### 5. INCIDENT MEDICAL AID STATIONS

MEDICAL AID STATIONS	LOCATION	PARAMEDICS	
		YES	NO
Medical Unit	ICP	XX	

### 6. TRANSPORTATION

#### A. Air Ambulances

NAME	ADDRESS	PHONE	PARAMEDICS	
			YES	NO
REACH 6	4615 Highland springs Rd Lakeport	St Helena Dispatch	XX	
Cal star	Concord	St Helena Dispatch	XX	
National Guard – Copters 828 & 840 – 24 hr Hoist	TBD	St Helena Dispatch	XX	

#### B. Ground Ambulances

AMR 72 On Incident Radio	ICP Incident Dedicated	707-337-7811	XX	
2 AMR Ambulance Strike teams for Evac's	ICP and Dispatched by AMR NAPA	707-257-9911	XX	

NAME	ADDRESS	TRAVEL TIME		PHONE	HELIPAD		BURN CENTER	
		AIR	GRND		YES	NO	YES	NO
QUEEN OF THE VALLEY TRAUMA LEVEL1	1000 TRANCAS ST NAPA, CA 94558	5 MINS	10 MINS	707-257-4411	XX			
ST HELENA HOSP	10 WOODLAND ROAD ST HELENA, CA	15 MINS	25 MINS	707-525-5300	XX			
U. C. DAVIS HOSP Burn Center	2315 STOCKTON BLVD, SACRAMENTO, CA	25 MINS	45-55 MINS	916-734-2011	XX		XX	

### 8. MEDICAL EMERGENCY PROCEDURES

**LINE EMERGENCY:** Crew Supervisor to contact Division Supervisor with patient complaint/condition and location.

- Division Supervisor contacts:
  - Line EMT / PM
  - Communications Unit
- Communication Unit will clear command channel for emergency traffic
- Communications will switch all emergency traffic to **CALCORD** as required for Emergency
- Communications Unit contacts:
  - Medical Unit
  - Safety
  - Operations
- Division Supervisor will run medical emergency on **CALCORD**
- Medical Unit will:
  1. Dispatch air/ground ambulance to as appropriate.
  2. If necessary, after patient pickup, dispatch ambulance to helibase for transportation
  3. Notify receiving hospital of injury status.

**CAMP EMERGENCY:** Contact Medical Unit with patient complaint/condition and location. Medical Staff will respond to stabilize incident:

### INJURY REPORTING PROCEDURES

NATURE OF INJURY \_\_\_\_\_

LOCATION OF PATIENT \_\_\_\_\_

TRANSPORTATION REQUESTED BY: AIR \_\_\_ GROUND \_\_\_

POINT OF PICKUP \_\_\_\_\_

LAT \_\_\_\_\_ LONG \_\_\_\_\_

PATIENT UNIT ID \_\_\_\_\_

REMINDER: DO NOT GIVE PT NAME OVER RADIO

IS AN EMT WITH PATIENT: YES \_\_\_ NO \_\_\_

AGE \_\_\_\_\_

SEX: MALE \_\_\_ FEMALE \_\_\_

**ALL EMERGENCIES---Secure the area and identify witnesses for later investigation. Keep an accurate log of events.**

Medical Unit (951) 264-9340

ICS 206 8-78

9. PREPARED BY (MEDICAL UNIT LEADER)  
 Kevin Fortney MEDL *[Signature]*

10. REVIEWED BY (SAFETY OFFICER)  
 Mike Urquides SOF1 *[Signature]*





# TRAINING MESSAGE

## Make Your Training Count

The Incident Training Specialist is located behind the Check-In table; Hours of operation are 0630 to 2030 hours. **If you are a trainee or have a trainee working with you please stop by to register your training assignment.** It is very important that you register early!

### Focus on:

- What training task have you experienced during your assignment*
- How can you take advantage of opportunities during the remainder of your assignment?*
- Document in the taskbook promptly while it's fresh in your mind.*

You may also contact us by phone at:

Rob Scott      TNSP              949-292-3207

Matt Seybert   TNSP (T)          714-875-4040

**Thank you for helping us to help you!!!**



# PUBLIC INFORMATION SECTION



Incident Information Line: (707) 967-4207  
Incident Media Line: (707) 266-6152

STATUS	
Incident Start Date: 10/8/2017	Incident Start Time: 09:52 PM
Incident Type: Vegetation	Cause: Under Investigation
Incident Location: Napa County	Total Personnel:
Acreage:	Containment:



Update

**MEDIA** – The California State Penal Code Section 409.5(d) allows the news media to enter scenes of disaster, riot or civil disturbance. Properly identified members of the news media should not be restricted from entering locations specified within the code. However, this does not include crime scenes, private property and does not imply that the news media may interfere with incident operations while they are in the areas of concern. More information can be found [here](#).



409.5

**CAL FIRE SOCIAL MEDIA POLICY** – When assigned to a CAL FIRE incident, you will adhere to the CAL FIRE Social Media Policy, Section 0691. You can find further information about the CAL FIRE Social Media Policy [here](#).



Social Media

**PHOTOGRAPHS AND VIDEOS OF INCIDENT** – We are in a new era of media. Media no longer means news/broadcast industry, but now refers to anyone that has the capability to shoot video, photographs and post them onto social media sites in a matter of minutes. Unfortunately, we have seen some instances of photographs or videos that have depicted unsafe, unprofessional or embarrassing circumstances which are a serious breach of ethics. When this happens, it reflects poorly on all that are attached to this incident. Posting an inappropriate video, photo or blog comment could expose oneself to unwanted ramifications. It may be unsafe to shoot photos or video and a firefighter who is concentrating on a camera loses their situational awareness.

The Public Information Office would like copies of the video and pictures that you safely took while not in an emergency situation, fire suppression activity or in an overhead assignment. Bring your video and pictures to the Public Information trailer; they will be reviewed and possibly uploaded to our many CAL FIRE social media sites. Remember, we don't want photographs or videos that depict unsafe, unprofessional or embarrassing circumstances, which are a serious breach of ethics.

**LOST AND FOUND** – The Information Section will manage lost and found items for the incident. If you have lost an item please leave your contact information and what you have lost at the Information Section. If you have found an item on the incident, bring the item to the Information Section with your contact information as well.

**MAIL SERVICE** – The Information Section can assist you with sending and receiving mail.

*In readiness is all*





# **FINANCE SECTION MESSAGE**



**The OES rep is available for any questions regarding F-42's and local government time keeping.**

**There is a computer dedicated for E-Pay use set up in the Finance Section.**

**Please make sure hired equipment shift tickets are completed for all private vendors and dropped off in the Time Unit by agency personnel / line supervisors only.**

**Please make sure hired equipment agreements are turned into the Time Unit.**

**Please report all injuries and suppression damage to the Comp / Claims Unit, no matter how minor.**

**Please complete water use forms included in the IAP. Turn in to Comp/Claims.**

**Any "off site" feeding charged to the incident must be pre-approved by the Logistics Section and/or Finance Section Chief.**

**The Finance Section is located in the Bingo Hall.**

**ROGER RAINES, FSC1  
TERRY EASTWOOD, DEP. FSC1**







**INCIDENT MANAGEMENT TEAM 3**  
Finance Section



## Shift Ticket Examples

### 24hr Line Resource – 2 Operator

EMERGENCY SHIFT TICKET and EVALUATION FORM The responsible Government Officer will complete this form each shift.						Contractor Name <b>THE BEST DOZERS LLC</b>	
Incident or Project Name <b>See ROSS Report</b>		Incident Number <b>See ROSS Report</b>		Request Number <b>E-444</b>		Operator #1 <b>FIRST &amp; LAST</b>	Operator #2 <b>FIRST &amp; LAST</b>
Agreement Number <b>MMU-015953-00</b>						Operator Furnished By: <input checked="" type="checkbox"/> Contractor <input type="checkbox"/> Government	
Equipment Make <b>1999 PETERBILT 379</b>			Equipment Model / Type <b>TRANSPORT 18 WHEEL</b>			Operating Supplies Furnished By: <input checked="" type="checkbox"/> Contractor <input type="checkbox"/> Government	
Serial Number <b>COMPLETE VIN#</b>			License Number <b>12345A1</b>			Equipment Status <input type="checkbox"/> Inspected <input checked="" type="checkbox"/> Under Agreement	
Equipment Use (Circle) <b>Hours</b> Days / Miles						Released by Government <input type="checkbox"/> Withdrawn by Contractor	
Date Mo / Day	Start	Stop	Work	Assignment		Remarks/Comments** <b>2 OPERATORS</b>  <b>NO DAMAGE / NO CLAIM</b>	
<b>10/10</b>	<b>0701</b>	<b>2400</b>	<b>17</b>	<b>DIV X</b>			
<b>10/11</b>	<b>0001</b>	<b>0700</b>	<b>7</b>	<b>DIV X</b>			
Vendor Rating						Govt. Rep. Name and Position – PRINT	
Met Performance Expectations						<b>Print Your Name</b>	
Equipment in Safe Working Condition						Govt. Rep. Signature	
Operator Skill Level						<b>Your Signature</b>	
Operates Safely						Contractor Signature	
Operator's Cooperation Level						<b>John Smith</b>	
Overall Performance						Date <b>9/6/17</b> Time <b>0700</b>	
* NOTE: any rating of POOR requires an explanation in Comment Section. ** Final evaluation or for more documentation, use a CALFIRE Form 230 or equivalent.						CAL FIRE 297 (Rev 3-2011)	

### 12hr Line Resource – 1 Operator

EMERGENCY SHIFT TICKET and EVALUATION FORM The responsible Government Officer will complete this form each shift.						Contractor Name <b>THE BEST DOZERS LLC</b>	
Incident or Project Name <b>See ROSS Report</b>		Incident Number <b>See ROSS Report</b>		Request Number <b>E-555</b>		Operator #1 <b>FIRST &amp; LAST</b>	Operator #2 <b>-</b>
Agreement Number <b>LNU-015953-00</b>						Operator Furnished By: <input checked="" type="checkbox"/> Contractor <input type="checkbox"/> Government	
Equipment Make <b>2004 CAT</b>			Equipment Model / Type <b>D6N / TYPE II E</b>			Operating Supplies Furnished By: <input checked="" type="checkbox"/> Contractor <input type="checkbox"/> Government	
Serial Number <b>COMPLETE VIN#</b>			License Number <b>-</b>			Equipment Status <input type="checkbox"/> Inspected <input checked="" type="checkbox"/> Under Agreement	
Equipment Use (Circle) <b>Hours</b> Days / Miles						Released by Government <input type="checkbox"/> Withdrawn by Contractor	
Date Mo / Day	Start	Stop	Work	Assignment		Remarks/Comments** <b>1 OPERATOR</b>  <b>NO DAMAGE / NO CLAIM</b>	
<b>10/10</b>	<b>0001</b>	<b>0700</b>	<b>7</b>	<b>OFF SHIFT</b>			
<b>10/10</b>	<b>0701</b>	<b>1900</b>	<b>12</b>	<b>DIV X</b>			
<b>10/10</b>	<b>1901</b>	<b>2400</b>	<b>5</b>	<b>OFF SHIFT</b>			
Vendor Rating						Govt. Rep. Name and Position – PRINT	
Met Performance Expectations						<b>Print Your Name</b>	
Equipment in Safe Working Condition						Govt. Rep. Signature	
Operator Skill Level						<b>Your Signature</b>	
Operates Safely						Contractor Signature	
Operator's Cooperation Level						<b>John Smith</b>	
Overall Performance						Date <b>9/5/17</b> Time <b>1900</b>	
* NOTE: any rating of POOR requires an explanation in Comment Section. ** Final evaluation or for more documentation, use a CALFIRE Form 230 or equivalent.						CAL FIRE 297 (Rev 3-2011)	

*In readiness is all*

**FORM MUST BE FILLED OUT DAILY BY OPERATOR**

EMERGENCY SHIFT TICKET and EVALUATION FORM				Contractor Name	
The responsible Government Officer will complete this form each shift				Operator #1	Operator #2
Incident or Project Name		Incident Number	Request Number	Operator Furnished By: <input type="checkbox"/> Contractor <input type="checkbox"/> Government	
Agreement Number		Equipment Model / Type		Operating Supplies Furnished By: <input type="checkbox"/> Contractor <input type="checkbox"/> Government	
Equipment Make		Licence Number		Equipment Status	
Serial Number / VIN		Remarks/Comments ** Receipt Invoice No.			
<b>INVOICE / RECEIPT</b>					
Date		Odometer		Govt. Rep. Name and Position - PRINT	
Mo / Day	Start	Stop	Work	GALS.	Last 4 of Card
WEX Card		Voyager Card		Govt. Rep. Signature	
Vendor Name		Vendor Address		Contractor Signature	
				Date	
				Time	
* NOTE: Any rating of POOR requires an explanation in Comment Section.				CALFIRE 297	
**Final evaluation or for more documentation, use an ICS Form 230 or equivalent.				(Rev. 3-2011)	

White - Govt Representative      Yellow - Home Unit HE Coordinator





## FIRE SUPPRESSION REPAIR PLAN: SOUTHERN LNU COMPLEX

**Fire suppression repair is the repair of damage caused directly from fire suppression activities. It is not the repair of infrastructure or rehabilitation of burned areas that happened as a result of the fire itself.**

Damaged facilities will be upgraded to their pre-fire condition. Projects too large or complex to be completed by the Fire Suppression Repair Group shall be transferred to the Comp/Claims Unit or the local Unit. Repair work shall only occur in locations authorized by the Operations division and where fire suppression activities are complete. Fire Suppression Repair Group resources shall evaluate all Divisions for appropriate repair needs. This includes areas inside and outside the fire perimeter, provided the damage was caused by official fire suppression activities.

Examples of items that may be repaired include, but are not limited to:

Infrastructure Damage	Natural Resource Damage
Fences and gates	Soil erosion
Culverts, bridges, and other watercourse crossings	Adverse impacts to air and water quality
Water sources	Adverse impacts to protected species of plants and animals
Utility distribution lines (above or below ground)	
Road barriers removed for fire access	
Trash, debris, and supplies left by fire suppression resources	
Miscellaneous damage to residential property	

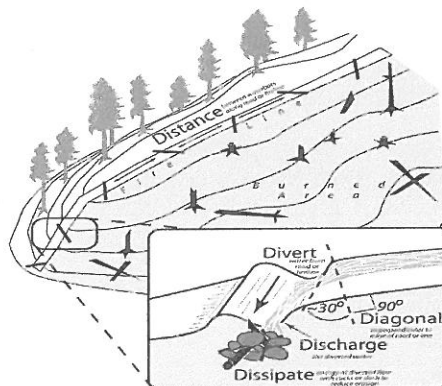
### Dozer Line Repair

Dozers construct both fire and contingency lines. Dozer line width varies greatly. The following measures shall be implemented for constructed dozer line:

- Berms and push-piles shall be spread out to the extent feasible. This may be accomplished by back-blading and/or using ripper shanks or grapples. Debris piled against trees or perched above watercourses is especially important to remove or disperse.
- Waterbreaks shall be constructed at a 30-45 degree angle and shall be a minimum depth of 12 inches from the bottom of the cut to the top of the berm. Where feasible, the discharge from waterbreaks shall be directed into vegetated or rockied areas.
- Where slopes exceed the range at which a tractor can effectively work, waterbreaks shall be constructed with hand tools.
- Roads used in fire suppression activities shall be left in the same condition they were found or better. Gravel and soil-surfaced roads shall be watered to prevent excessive dust. Where fire suppression activities have damaged or rendered road drainage facilities non-functional, waterbreaks or drivable dips shall be installed for drainage.
- Where fire suppression activities have filled in or damaged inside ditches, the ditches shall be cleaned and left unobstructed.
- Spacing of waterbreaks shall be as follows:

Prevailing gradient	Maximum waterbreak spacing
0-10%	200 feet
11-25%	150 feet
26-50%	100 feet
>50%	75 feet

*Spacing criteria is a general guide. Actual location of waterbreaks should be tailored to the topography and placement suited to the best dispersal of water flow.*



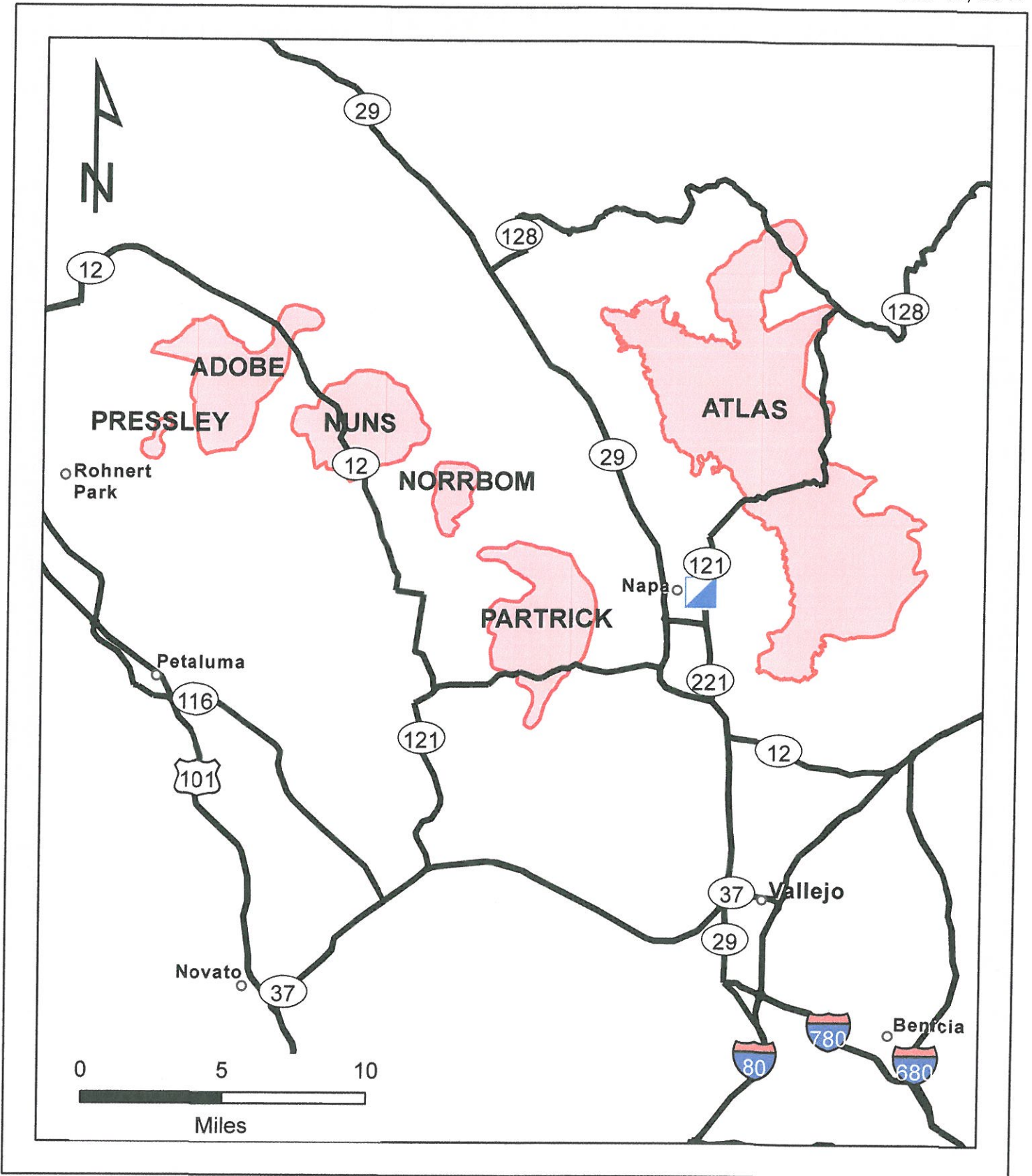


-  Location
-  Major Roads
-  Event Polygon

# Travel Map

## SOUTHERN LNU COMPLEX

CA-LNU-010105  
Oct. 11, 2017







-  Incident Command Post
-  Ground Support
-  Major Roads

# Ground Support Map

## SOUTHERN LNU COMPLEX

CA-LNU-010105

Oct. 11, 2017

