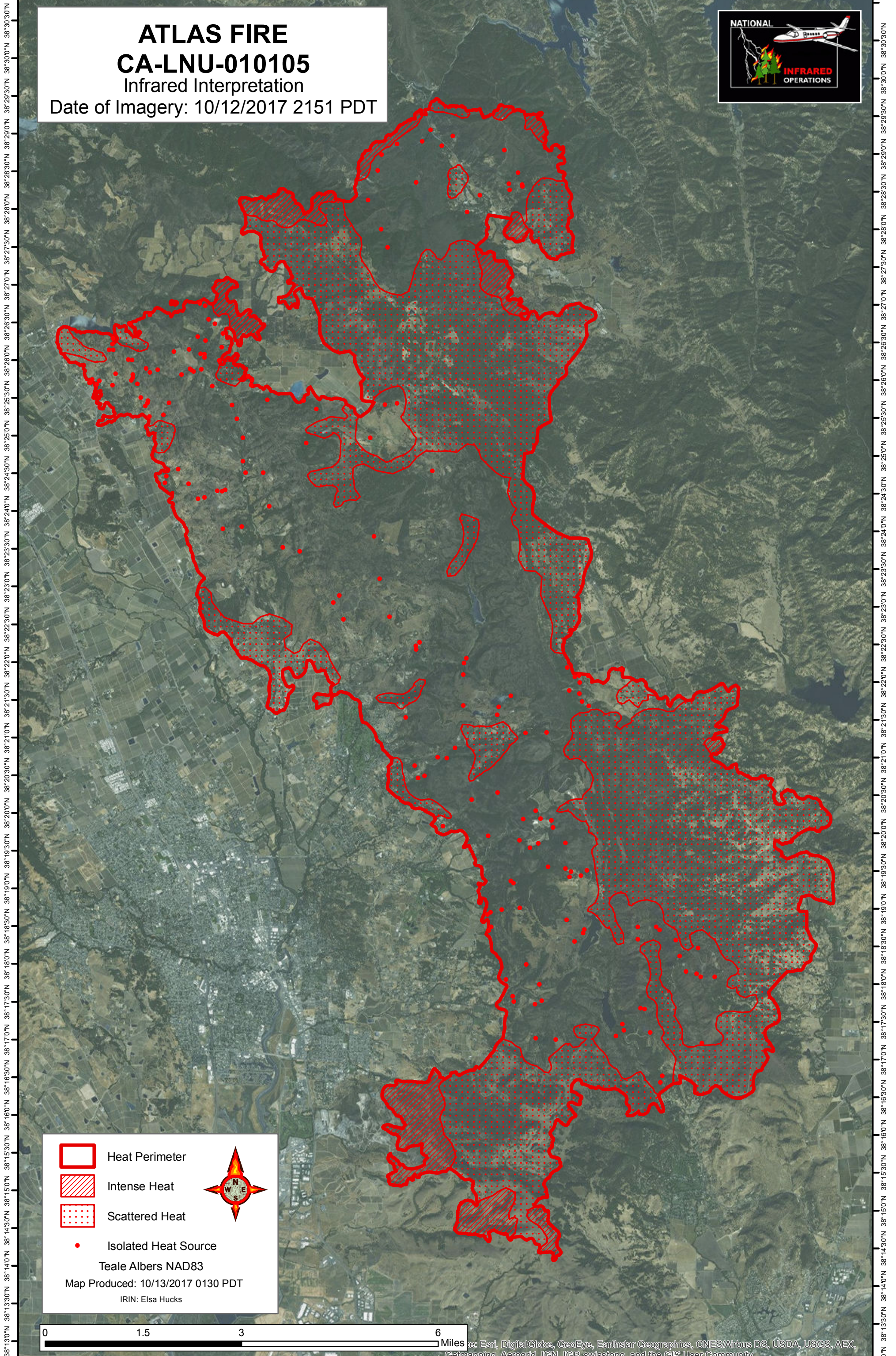






122°21'30"W 122°20'30"W 122°19'30"W 122°18'30"W 122°17'30"W 122°16'30"W 122°15'30"W 122°14'30"W 122°13'30"W 122°12'30"W 122°11'30"W 122°10'30"W 122°9'30"W 122°8'30"W 122°7'30"W

ATLAS FIRE CA-LNU-010105

Infrared Interpretation

Date of Imagery: 10/12/2017 2151 PDT



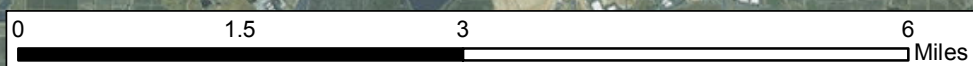
-  Heat Perimeter
-  Intense Heat
-  Scattered Heat
-  Isolated Heat Source



Teale Albers NAD83

Map Produced: 10/13/2017 0130 PDT

IRIN: Elsa Hucks



Esri, DigitalGlobe, GeoEye, Earthstar Geographics, CNES/Airbus DS, USDA, USGS, AEX, Getmapping, Aerogrid, IGN, IGP, swisstopo, and the GIS User Community

38°13'00"N 38°13'30"N 38°14'00"N 38°14'30"N 38°15'00"N 38°15'30"N 38°16'00"N 38°16'30"N 38°17'00"N 38°17'30"N 38°18'00"N 38°18'30"N 38°19'00"N 38°19'30"N 38°20'00"N 38°20'30"N 38°21'00"N 38°21'30"N 38°22'00"N 38°22'30"N 38°23'00"N 38°23'30"N 38°24'00"N 38°24'30"N 38°25'00"N 38°25'30"N 38°26'00"N 38°26'30"N 38°27'00"N 38°27'30"N 38°28'00"N 38°28'30"N 38°29'00"N 38°29'30"N 38°30'00"N 38°30'30"N