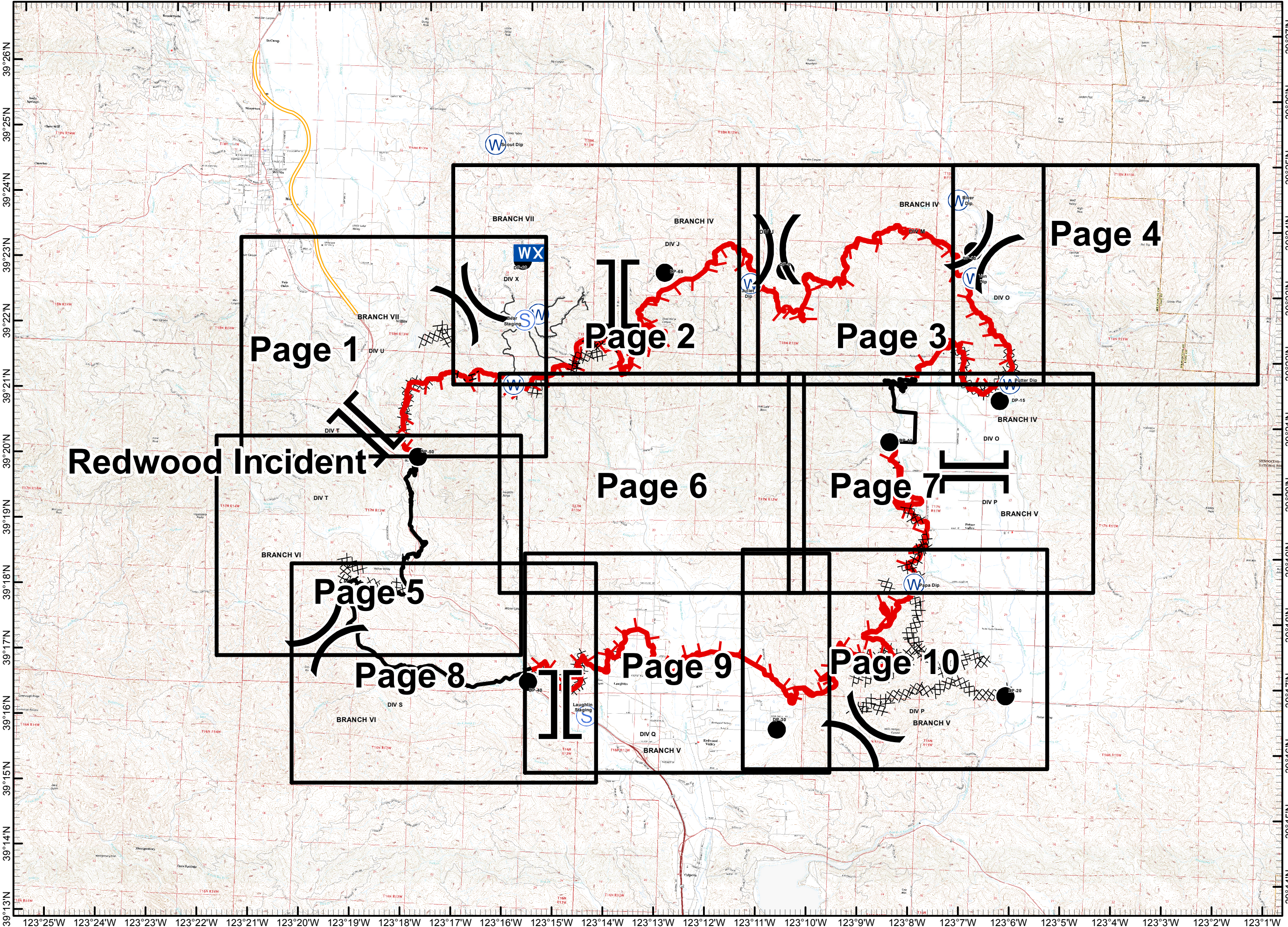


123°26'W 123°25'W 123°24'W 123°23'W 123°22'W 123°21'W 123°20'W 123°19'W 123°18'W 123°17'W 123°16'W 123°15'W 123°14'W 123°13'W 123°12'W 123°11'W 123°10'W 123°9'W 123°8'W 123°7'W 123°6'W 123°5'W 123°4'W 123°3'W 123°2'W

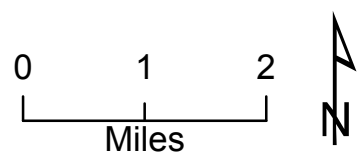


Mendocino Lake Complex
CAMEU012169
October 14, 2017
IAP Map

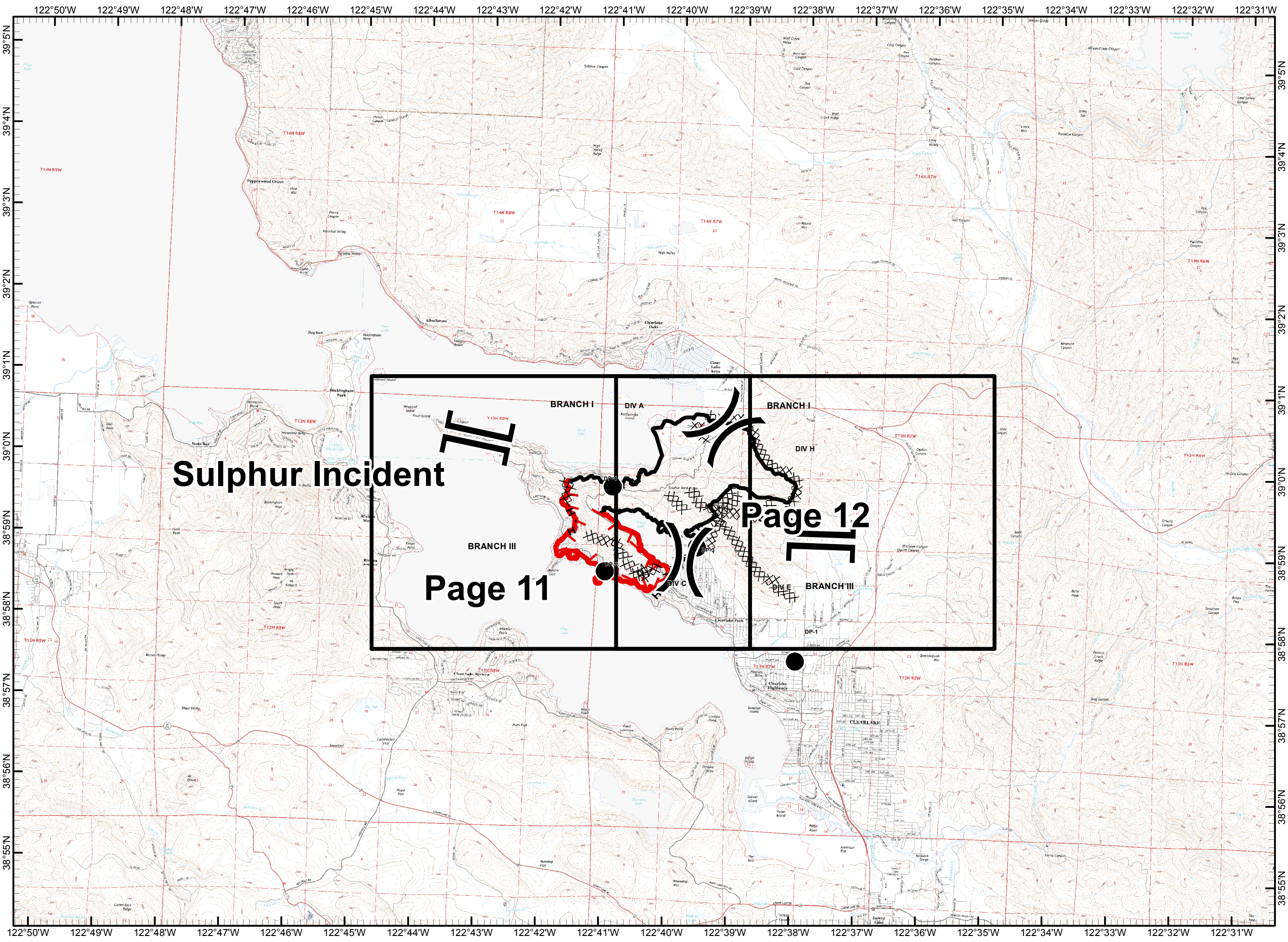
Redwood Incident



- Legend**
- () Division
 - [] Branch
 - Completed Line
 - Uncontrolled Fire Edge
 - XXXXX Completed Dozer Line
 - X • Proposed Dozer Line
 - Drop Point
 - Spot Fire
 - Helispot
 - Staging Area
 - Water Source
 - WX Mobile Weather Station



Dresselhaus
10/13/2017 @ 19:58
NAD83



Sulphur Incident

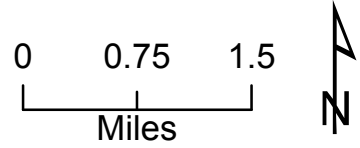
Page 11

Page 12



Mendocino Lake Complex
CAMEU012169
October 14, 2017
IAP Map
Sulphur Incident

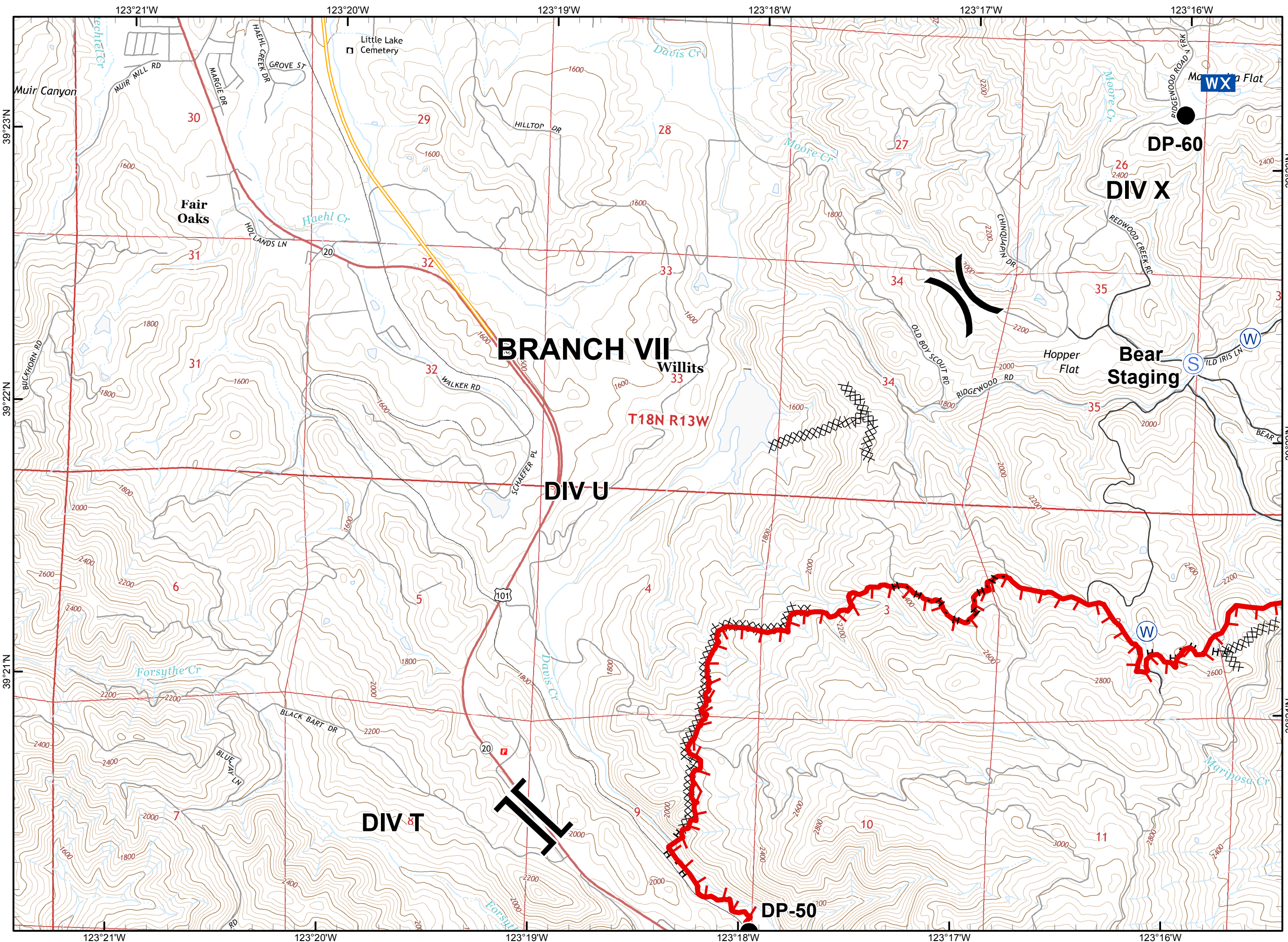
- Legend**
- () Division
 - [] Branch
 - Completed Line
 - Uncontrolled Fire Edge
 - XXXXX Completed Dozer Line
 - X• Proposed Dozer Line
 - Drop Point
 - ♂ Spot Fire
 - Helispot
 - Ⓢ Staging Area
 - Ⓜ Water Source
 - WX Mobile Weather Station



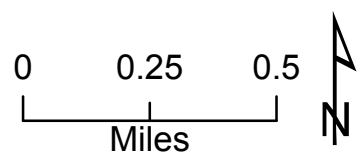
Dresselhaus
 10/13/2017 @ 19:58
 NAD83



Mendocino Lake Complex
CAMEU012169
October 14, 2017
IAP Map
Page 1



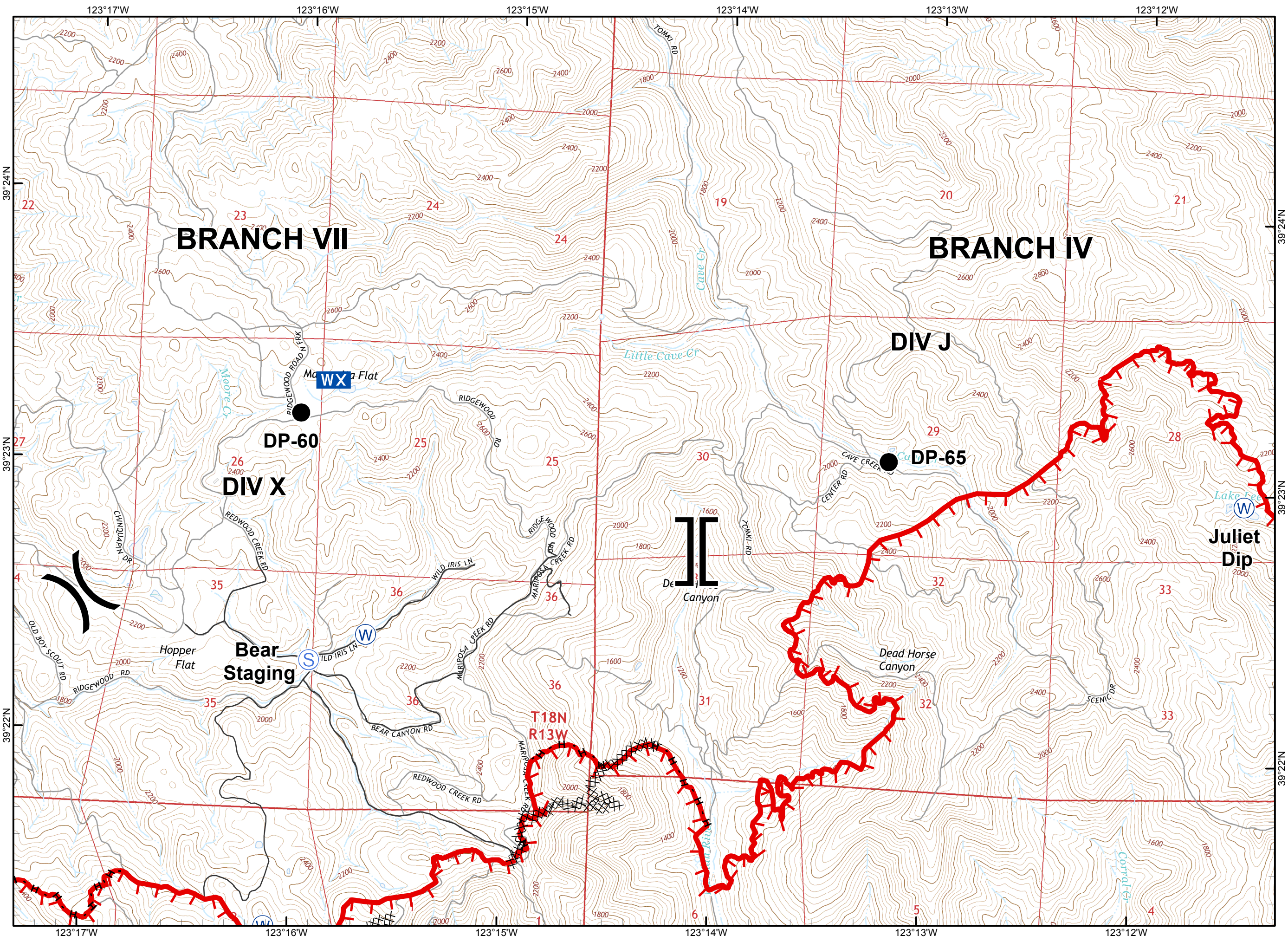
- Legend**
- () Division
 - [] Branch
 - Completed Line
 - Uncontrolled Fire Edge
 - XXXXX Completed Dozer Line
 - X• Proposed Dozer Line
 - Drop Point
 - ♂ Spot Fire
 - Helispot
 - S Staging Area
 - W Water Source
 - WX Mobile Weather Station



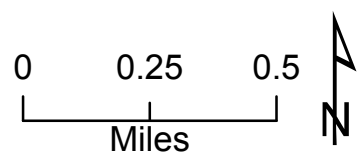
Dresselhaus
 10/13/2017 @ 19:58
 NAD83



Mendocino Lake Complex
CAMEU012169
October 14, 2017
IAP Map
Page 2

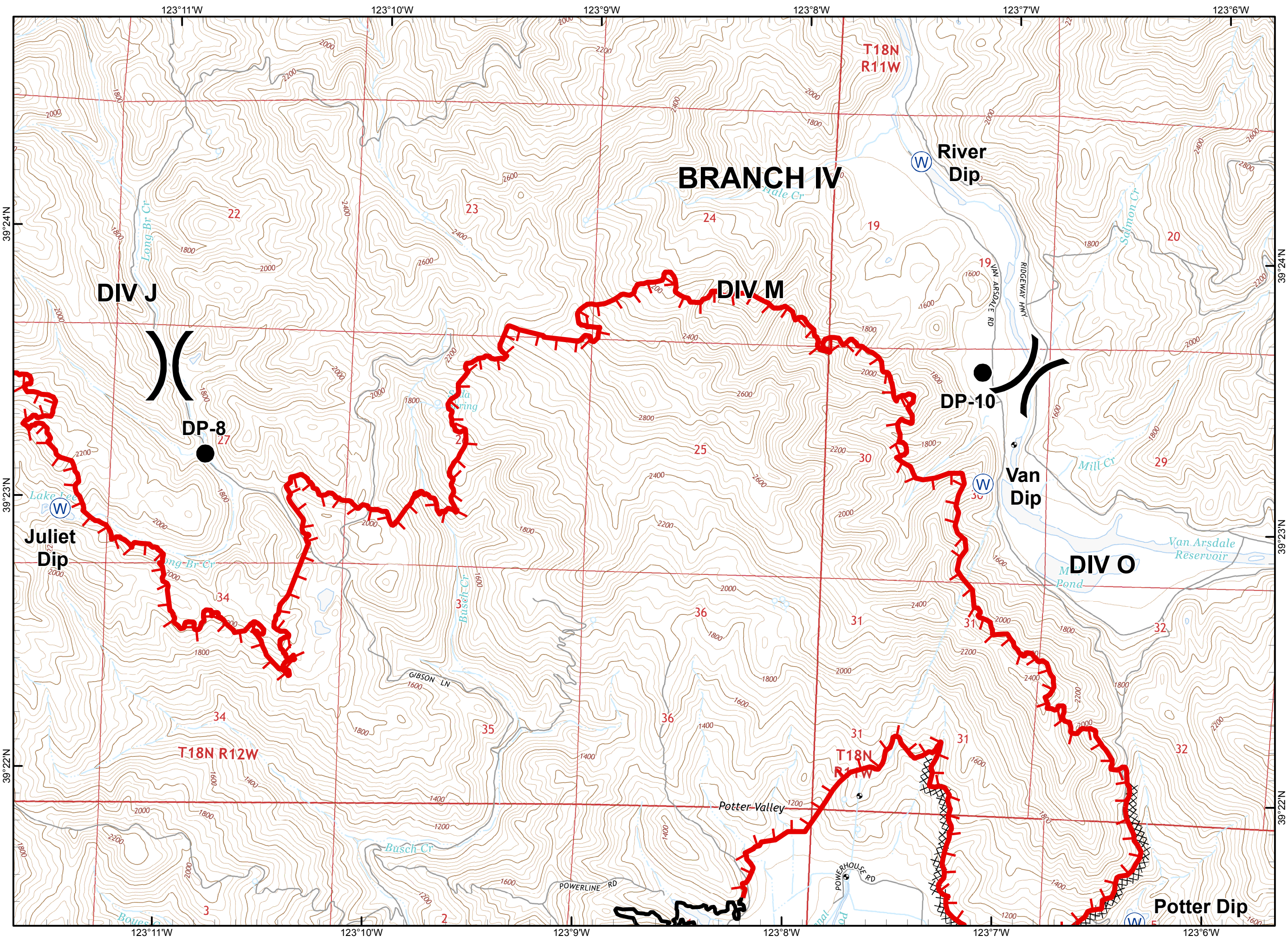


- Legend**
- () Division
 - [] Branch
 - Completed Line
 - ┌ Uncontrolled Fire Edge
 - ▣ Completed Dozer Line
 - ⊗ Proposed Dozer Line
 - Drop Point
 - ⊙ Spot Fire
 - ⊙ Helispot
 - ⊙ Staging Area
 - ⊙ Water Source
 - WX Mobile Weather Station

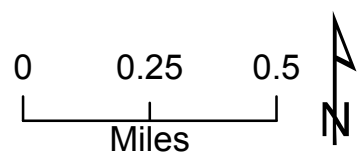




Mendocino Lake Complex
CAMEU012169
October 14, 2017
IAP Map
Page 3



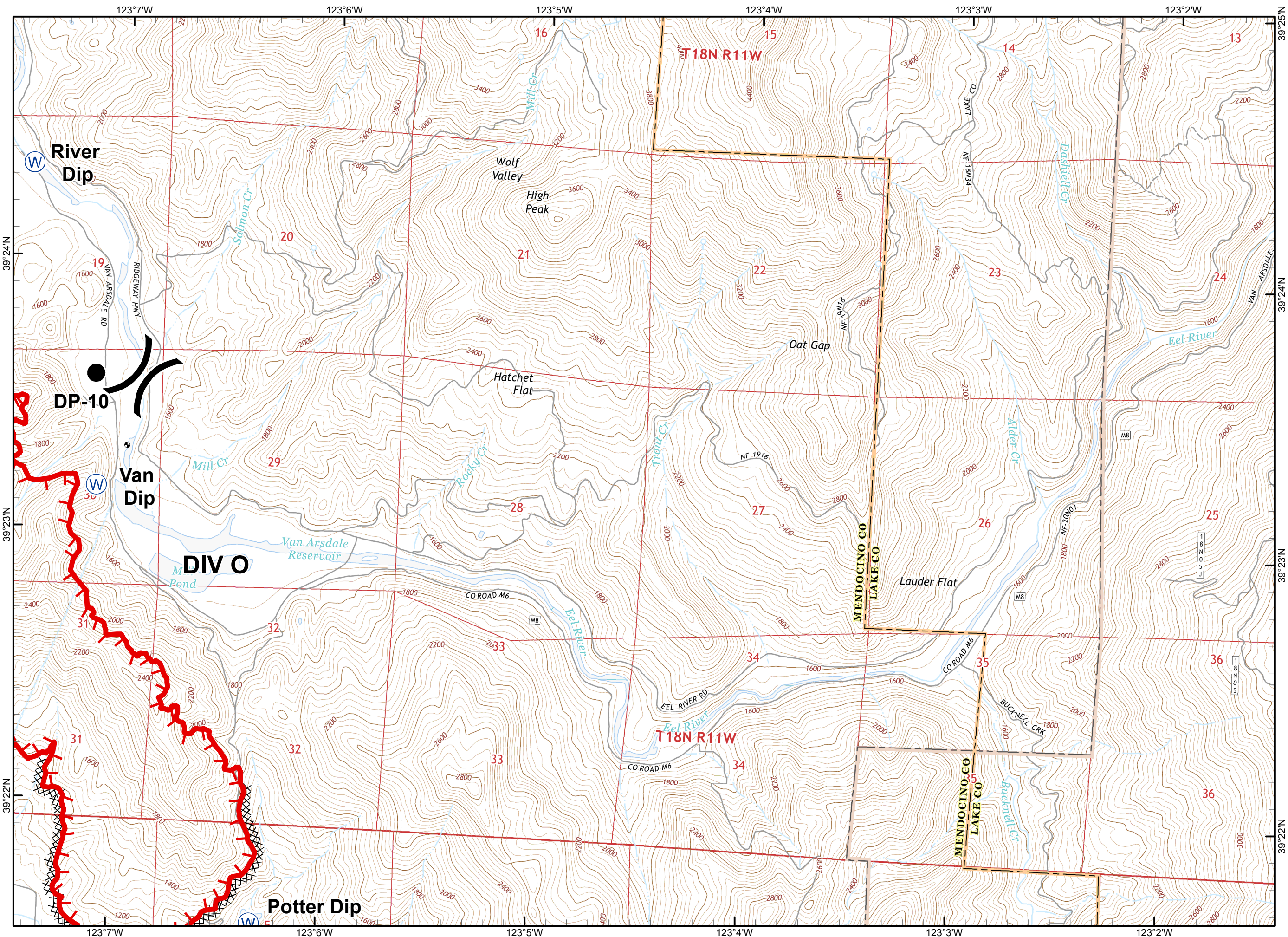
- Legend**
- () Division
 - [] Branch
 - Completed Line
 - ┌ Uncontrolled Fire Edge
 - XXXX Completed Dozer Line
 - X• Proposed Dozer Line
 - Drop Point
 - ♂ Spot Fire
 - Helispot
 - Ⓢ Staging Area
 - Ⓜ Water Source
 - WX Mobile Weather Station



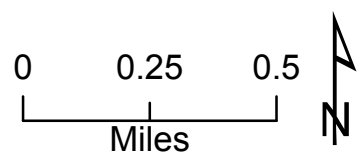
Dresselhaus
10/13/2017 @ 19:59
NAD83



Mendocino Lake Complex
CAMEU012169
October 14, 2017
IAP Map
Page 4



- Legend**
- () Division
 - [] Branch
 - Completed Line
 - Uncontrolled Fire Edge
 - XXXXX Completed Dozer Line
 - X• Proposed Dozer Line
 - Drop Point
 - ♂ Spot Fire
 - Helispot
 - Ⓢ Staging Area
 - Ⓜ Water Source
 - WX Mobile Weather Station

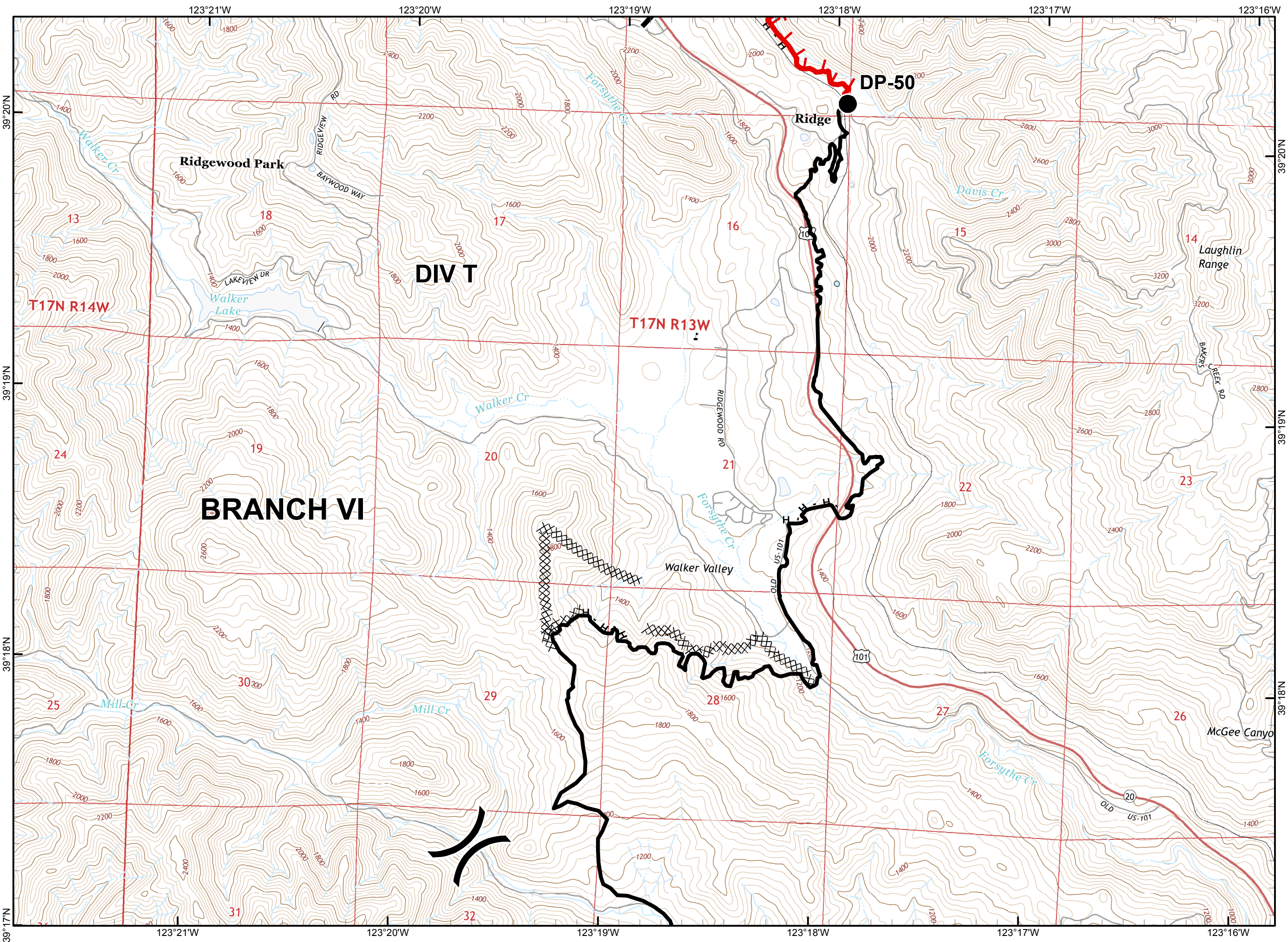


Dresselhaus
 10/13/2017 @ 19:59
 NAD83

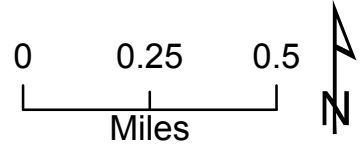


Mendocino Lake Complex

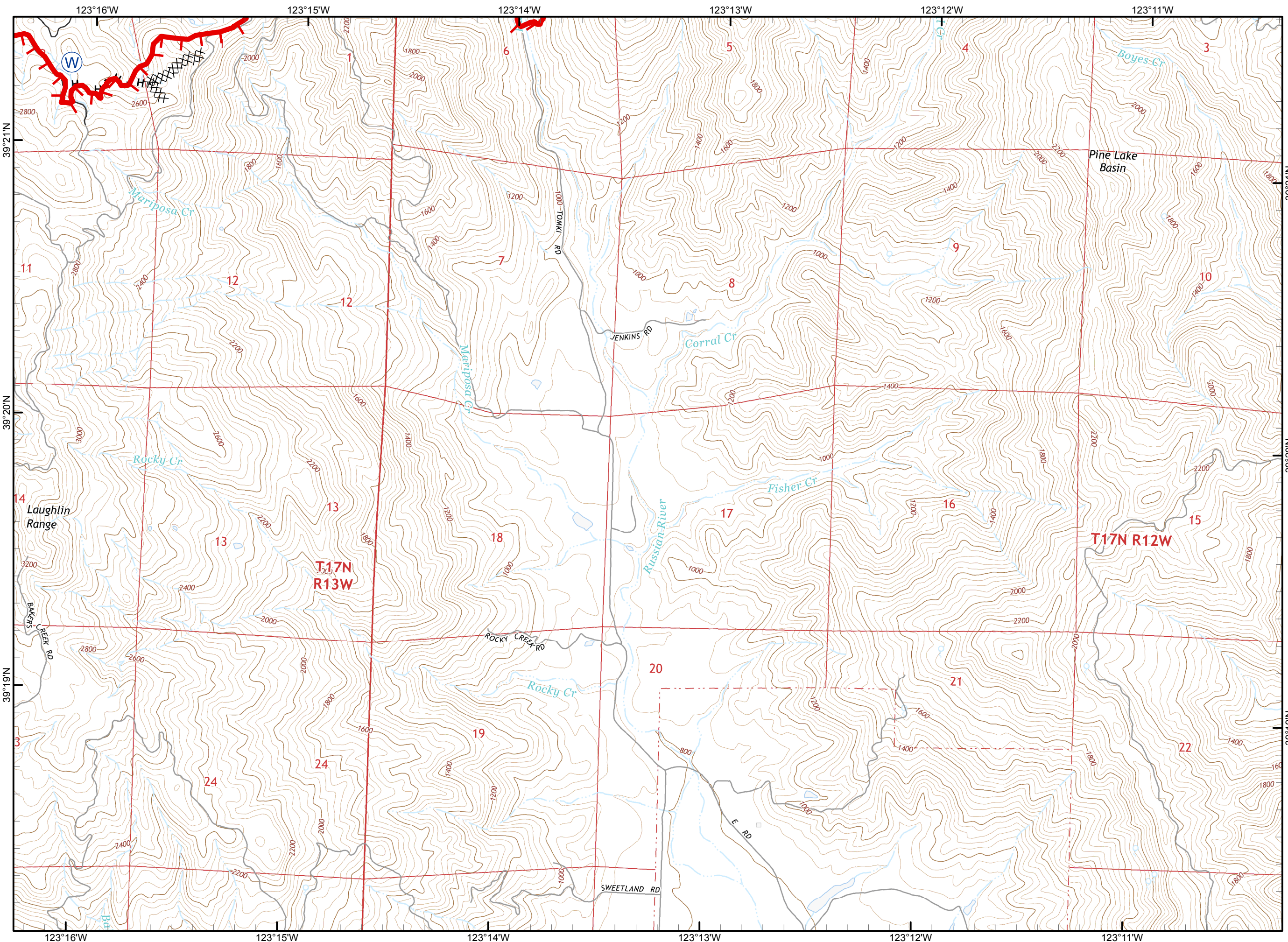
CAMEU012169
October 14, 2017
IAP Map
Page 5



- Legend**
- () Division
 - [] Branch
 - Completed Line
 - Uncontrolled Fire Edge
 - XXXXX Completed Dozer Line
 - X• Proposed Dozer Line
 - Drop Point
 - ♂ Spot Fire
 - Helispot
 - Ⓢ Staging Area
 - Ⓜ Water Source
 - WX Mobile Weather Station

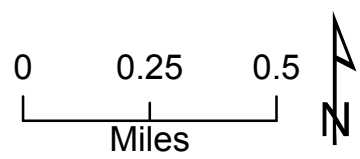


Dresselhaus
10/13/2017 @ 19:59
NAD83



Mendocino Lake Complex
CAMEU012169
October 14, 2017
IAP Map
Page 6

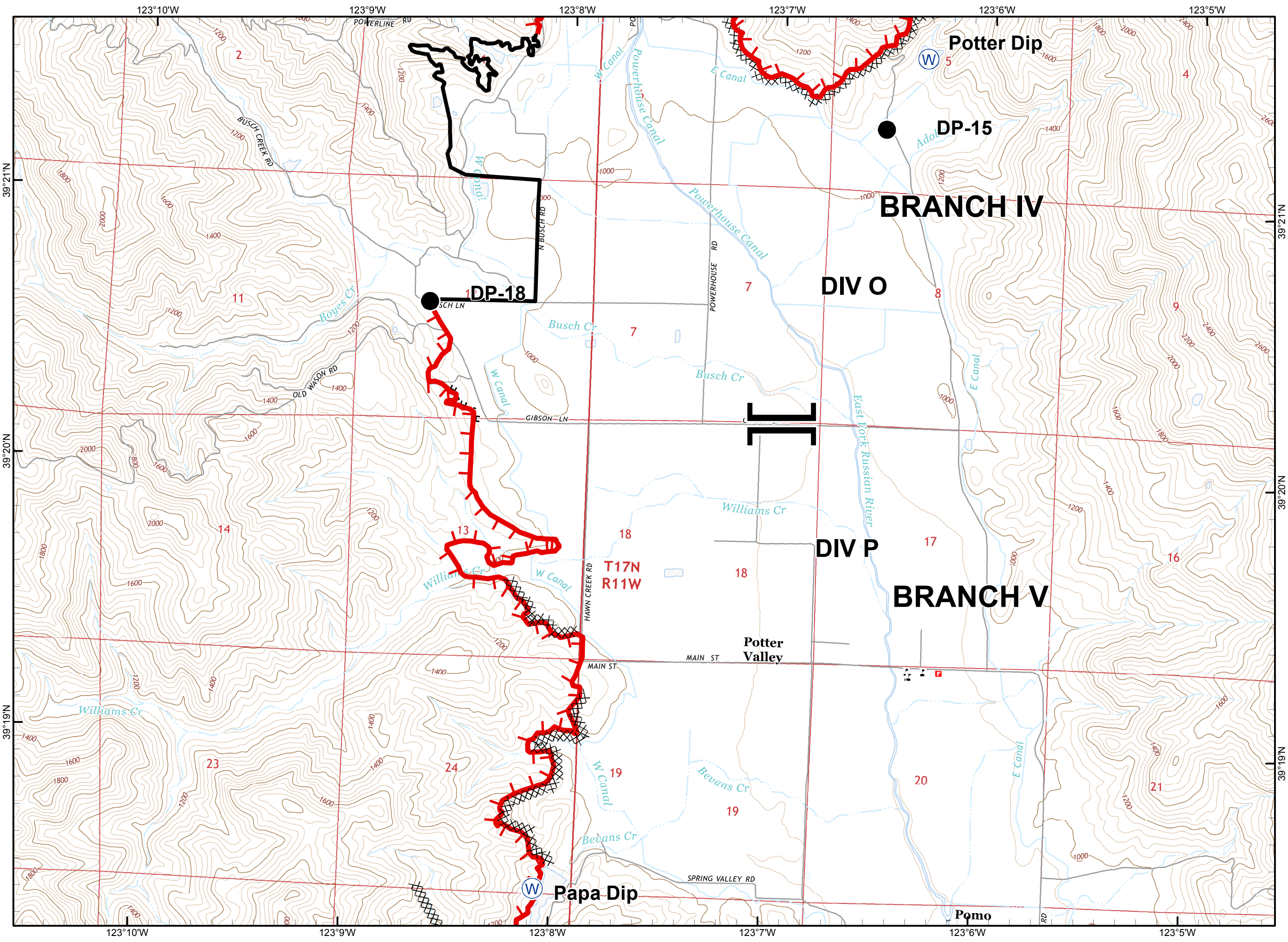
- Legend**
- () Division
 - [] Branch
 - Completed Line
 - Uncontrolled Fire Edge
 - XXXX Completed Dozer Line
 - X• Proposed Dozer Line
 - Drop Point
 - ♂ Spot Fire
 - Helispot
 - Ⓢ Staging Area
 - Ⓜ Water Source
 - WX Mobile Weather Station



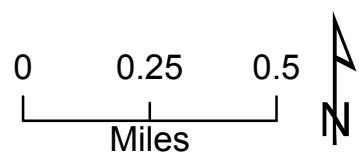
Dresselhaus
 10/13/2017 @ 19:59
 NAD83



Mendocino Lake Complex
CAMEU012169
October 14, 2017
IAP Map
Page 7



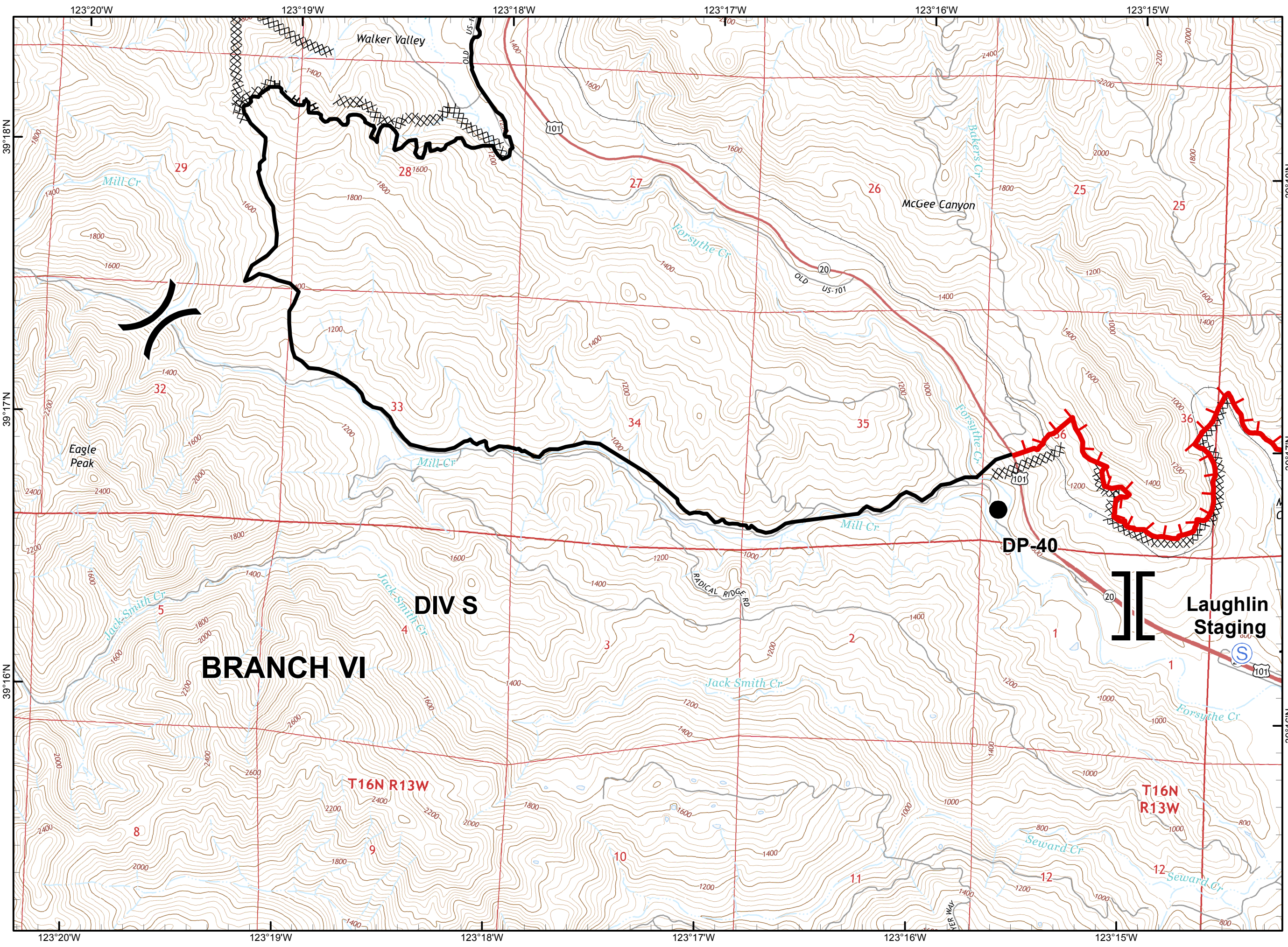
- Legend**
- () Division
 - [] Branch
 - Completed Line
 - ┌ Uncontrolled Fire Edge
 - ▣ Completed Dozer Line
 - ⊗ Proposed Dozer Line
 - Drop Point
 - ♂ Spot Fire
 - Helispot
 - Ⓢ Staging Area
 - Ⓜ Water Source
 - WX Mobile Weather Station



Dresselhaus
10/13/2017 @ 19:59
NAD83



Mendocino Lake Complex
CAMEU012169
October 14, 2017
IAP Map
Page 8



BRANCH VI

DIV S

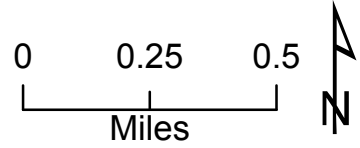
Laughlin Staging

DP-40

T16N R13W

T16N R13W

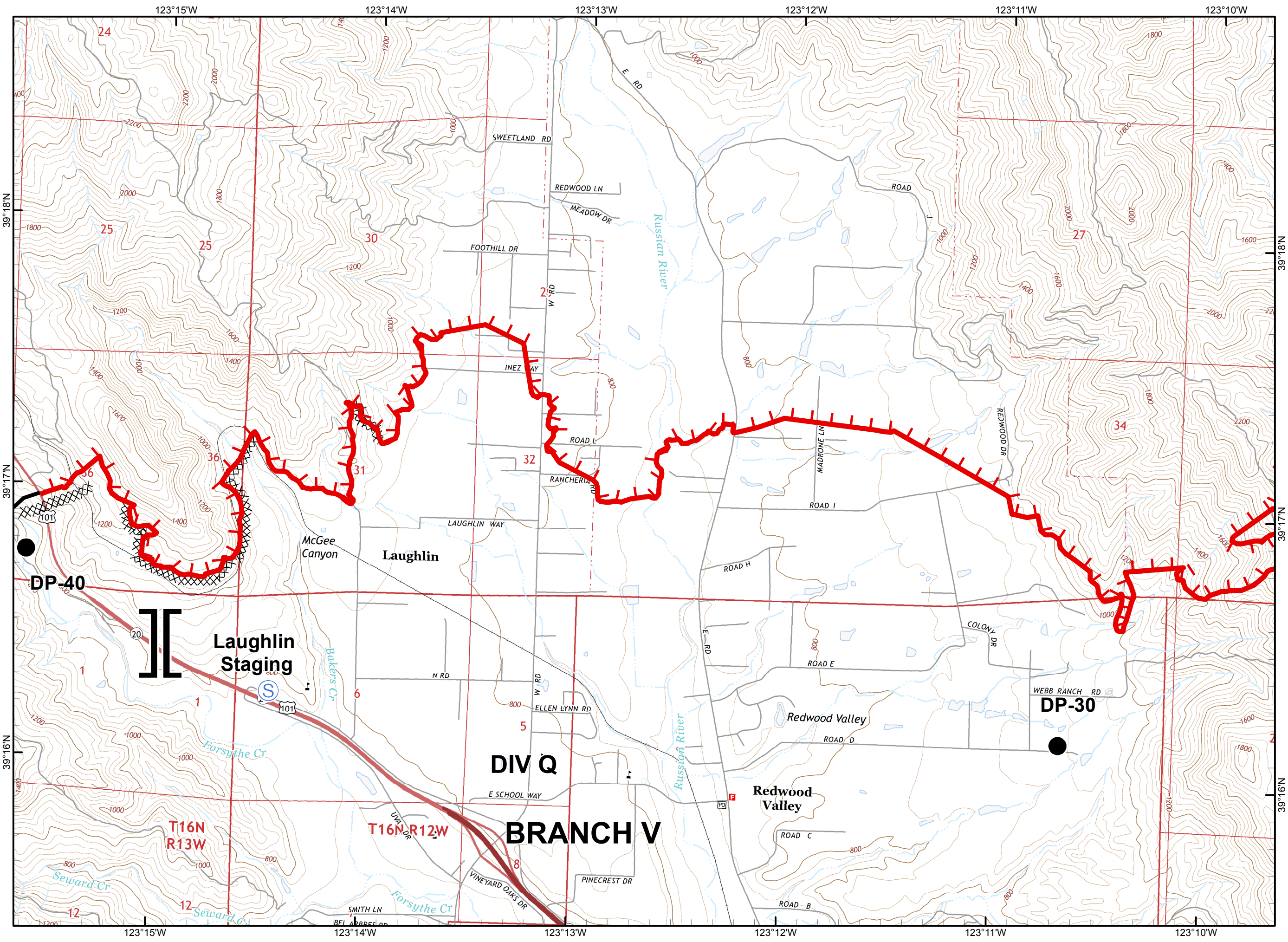
- Legend**
- () Division
 - [] Branch
 - Completed Line
 - - - Uncontrolled Fire Edge
 - XXXXX Completed Dozer Line
 - X• Proposed Dozer Line
 - Drop Point
 - ♂ Spot Fire
 - Helispot
 - (S) Staging Area
 - (W) Water Source
 - WX Mobile Weather Station



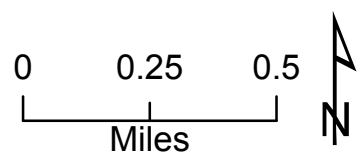
Dresselhaus
 10/13/2017 @ 19:59
 NAD83



Mendocino Lake Complex
CAMEU012169
October 14, 2017
IAP Map
Page 9



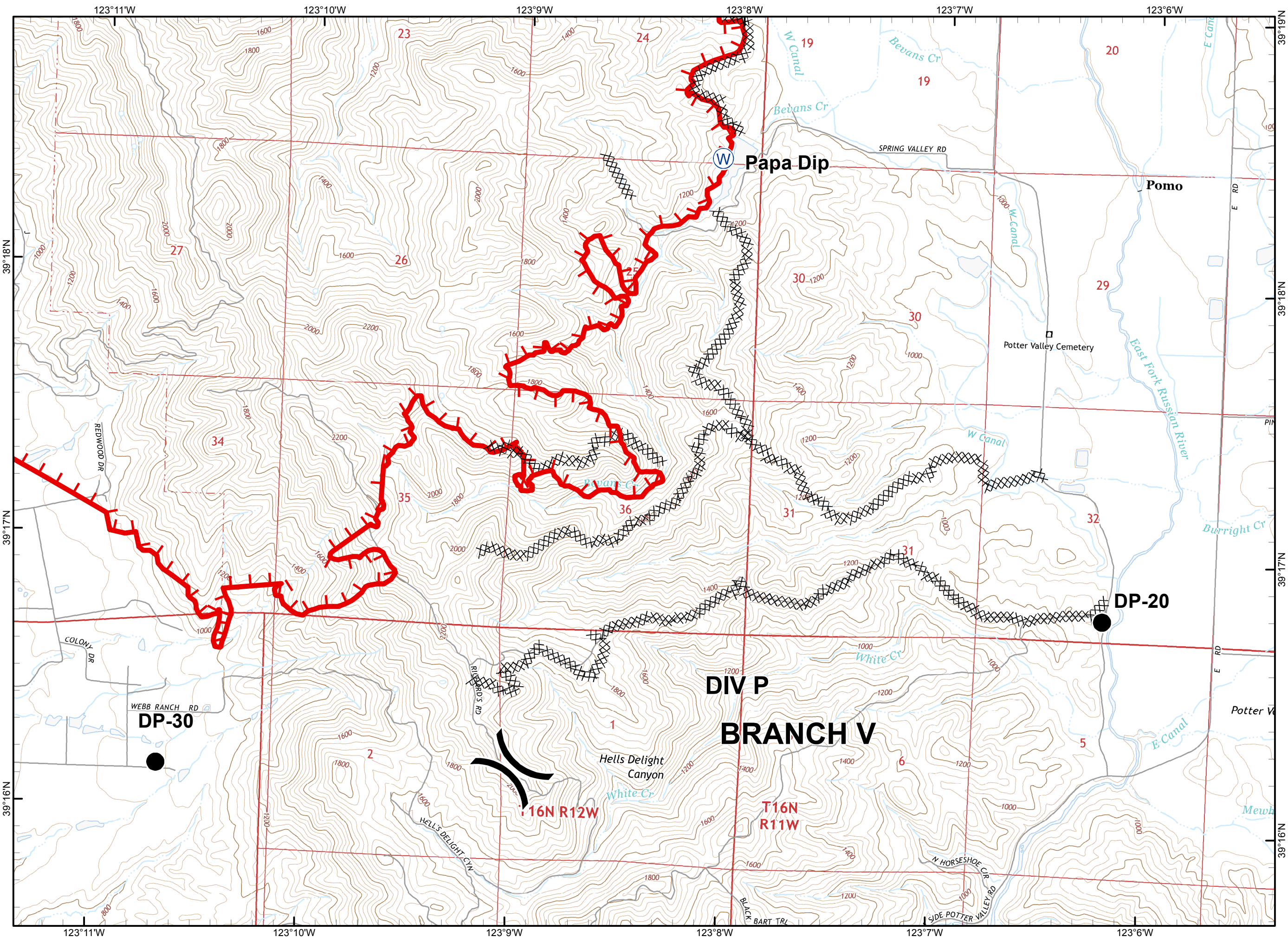
- Legend**
- () Division
 - [] Branch
 - Completed Line
 - Uncontrolled Fire Edge
 - ▨ Completed Dozer Line
 - ⊗ Proposed Dozer Line
 - Drop Point
 - ♂ Spot Fire
 - Helispot
 - Ⓢ Staging Area
 - Ⓜ Water Source
 - WX Mobile Weather Station



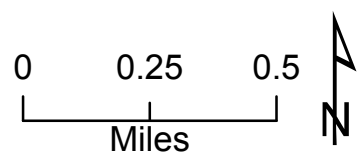
Dresselhaus
10/13/2017 @ 19:59
NAD83



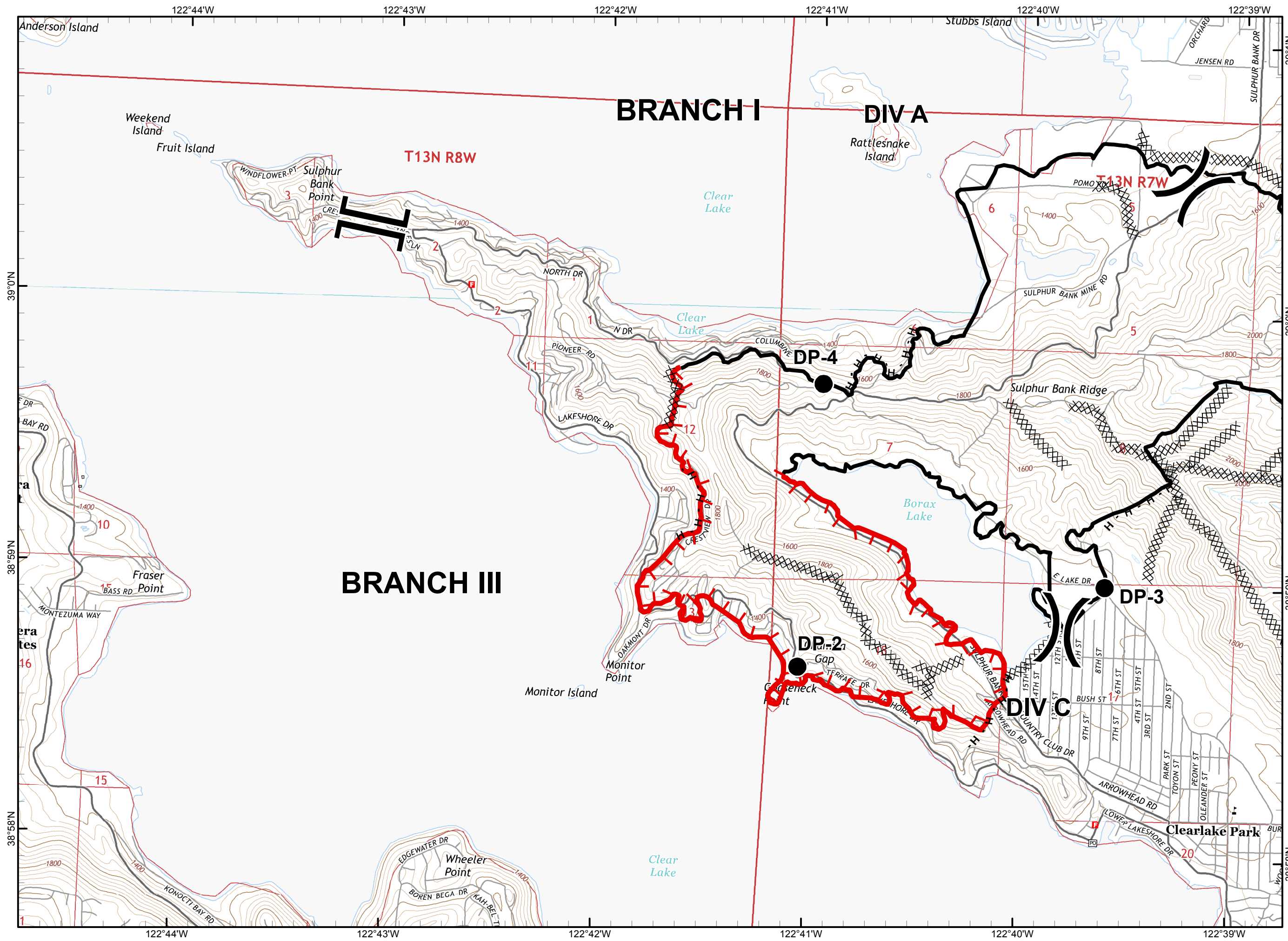
Mendocino Lake Complex
CAMEU012169
October 14, 2017
IAP Map
Page 10



- Legend**
- () Division
 - [] Branch
 - Completed Line
 - Uncontrolled Fire Edge
 - XXXXX Completed Dozer Line
 - X• Proposed Dozer Line
 - Drop Point
 - ♂ Spot Fire
 - Helispot
 - Ⓢ Staging Area
 - Ⓜ Water Source
 - WX Mobile Weather Station

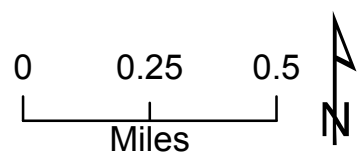


Dresselhaus
 10/13/2017 @ 19:59
 NAD83



Mendocino Lake Complex
CAMEU012169
October 14, 2017
IAP Map
Page 11

- Legend**
- () Division
 - [] Branch
 - Completed Line
 - Uncontrolled Fire Edge
 - XXXXX Completed Dozer Line
 - X• Proposed Dozer Line
 - Drop Point
 - Spot Fire
 - Helispot
 - Staging Area
 - Water Source
 - WX Mobile Weather Station



Dresselhaus
 10/13/2017 @ 19:59
 NAD83

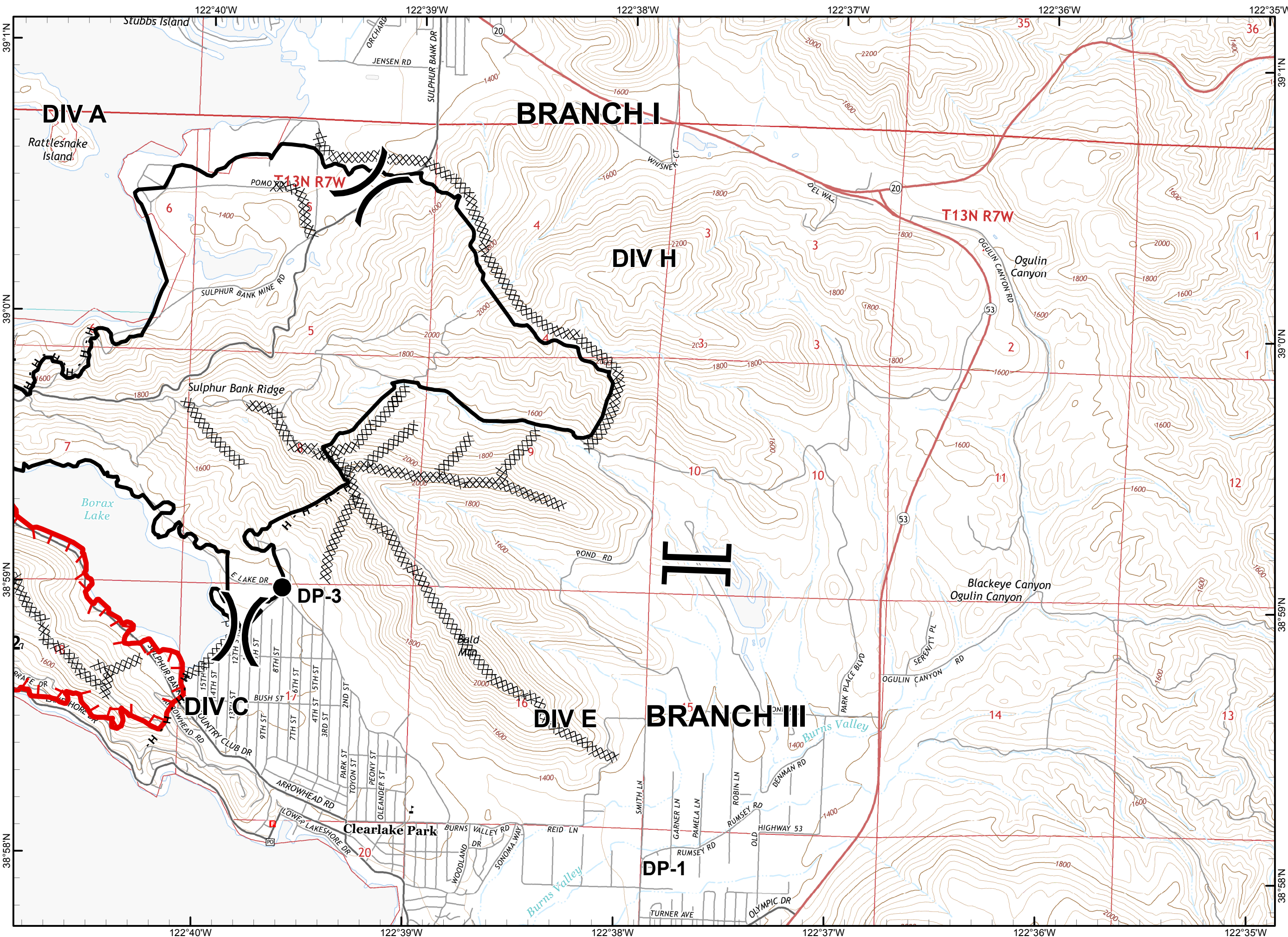


Mendocino Lake Complex

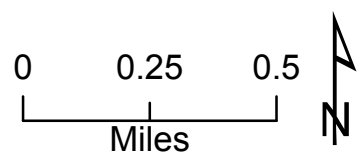
CAMEU012169

October 14, 2017
IAP Map

Page 12



- Legend**
- () Division
 - [] Branch
 - Completed Line
 - Uncontrolled Fire Edge
 - XXXXX Completed Dozer Line
 - X• Proposed Dozer Line
 - Drop Point
 - ♂ Spot Fire
 - Helispot
 - S Staging Area
 - W Water Source
 - WX Mobile Weather Station



Dresselhaus
10/13/2017 @ 19:59
NAD83