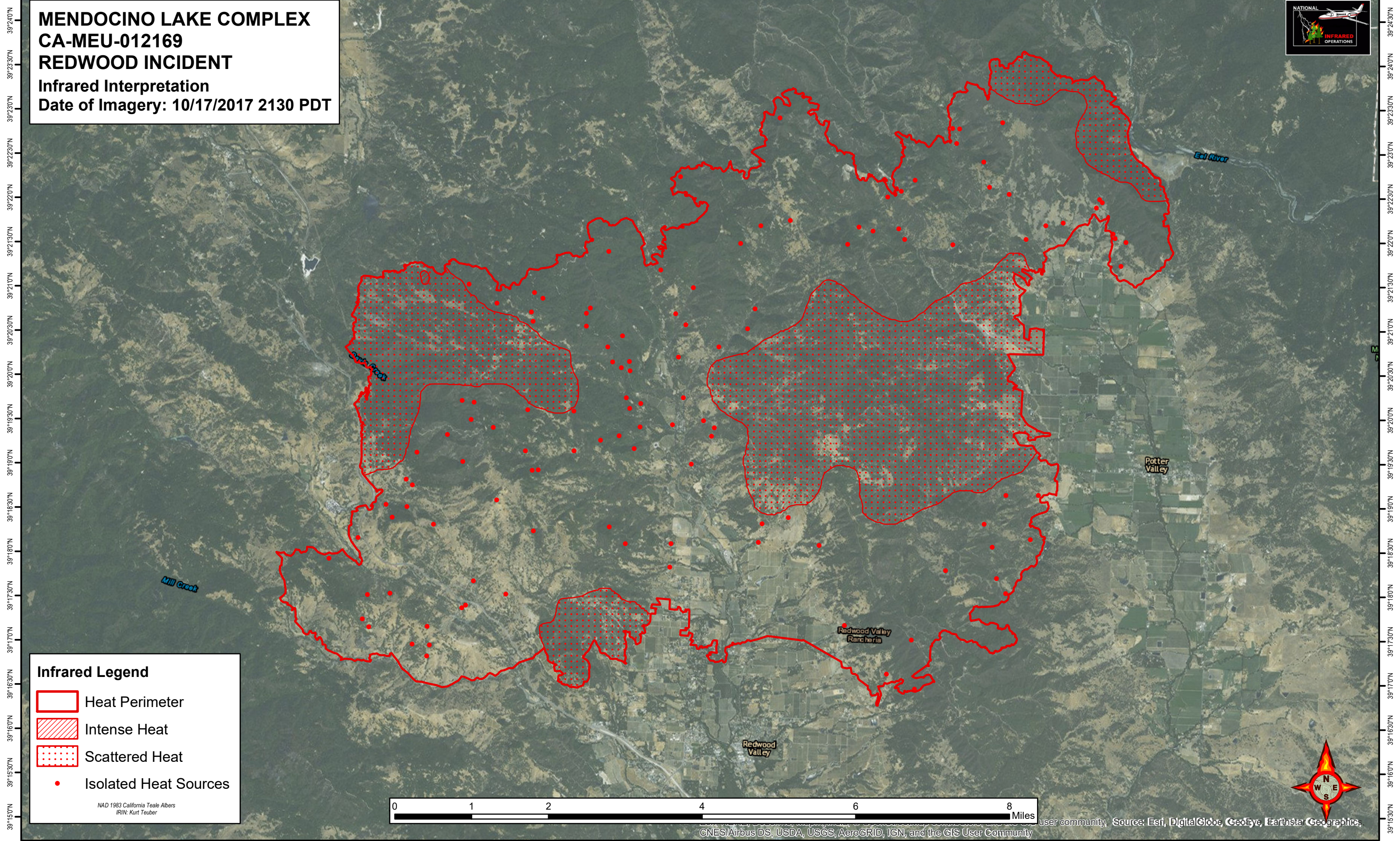






123°23'0"W 123°22'0"W 123°21'0"W 123°20'0"W 123°19'0"W 123°18'0"W 123°17'0"W 123°16'0"W 123°15'0"W 123°14'0"W 123°13'0"W 123°12'0"W 123°11'0"W 123°10'0"W 123°9'0"W 123°8'0"W 123°7'0"W 123°6'0"W 123°5'0"W 123°4'0"W

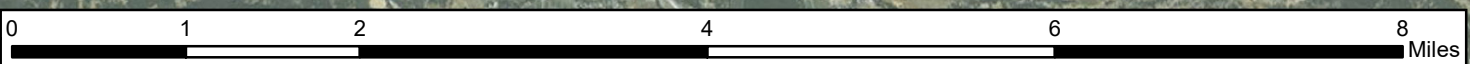
MENDOCINO LAKE COMPLEX
CA-MEU-012169
REDWOOD INCIDENT
Infrared Interpretation
Date of Imagery: 10/17/2017 2130 PDT



Infrared Legend

-  Heat Perimeter
-  Intense Heat
-  Scattered Heat
-  Isolated Heat Sources

NAD 1983 California Teale Albers
IRIN: Kurt Teuber



user community, Source: Esri, DigitalGlobe, GeoEye, Earthstar Geographics, CNES/Airbus DS, USDA, USGS, AeroGRID, IGN, and the GIS User Community

123°22'0"W 123°21'0"W 123°20'0"W 123°19'0"W 123°18'0"W 123°17'0"W 123°16'0"W 123°15'0"W 123°14'0"W 123°13'0"W 123°12'0"W 123°11'0"W 123°10'0"W 123°9'0"W 123°8'0"W 123°7'0"W 123°6'0"W 123°5'0"W 123°4'0"W