



IAP Index

Wind Complex

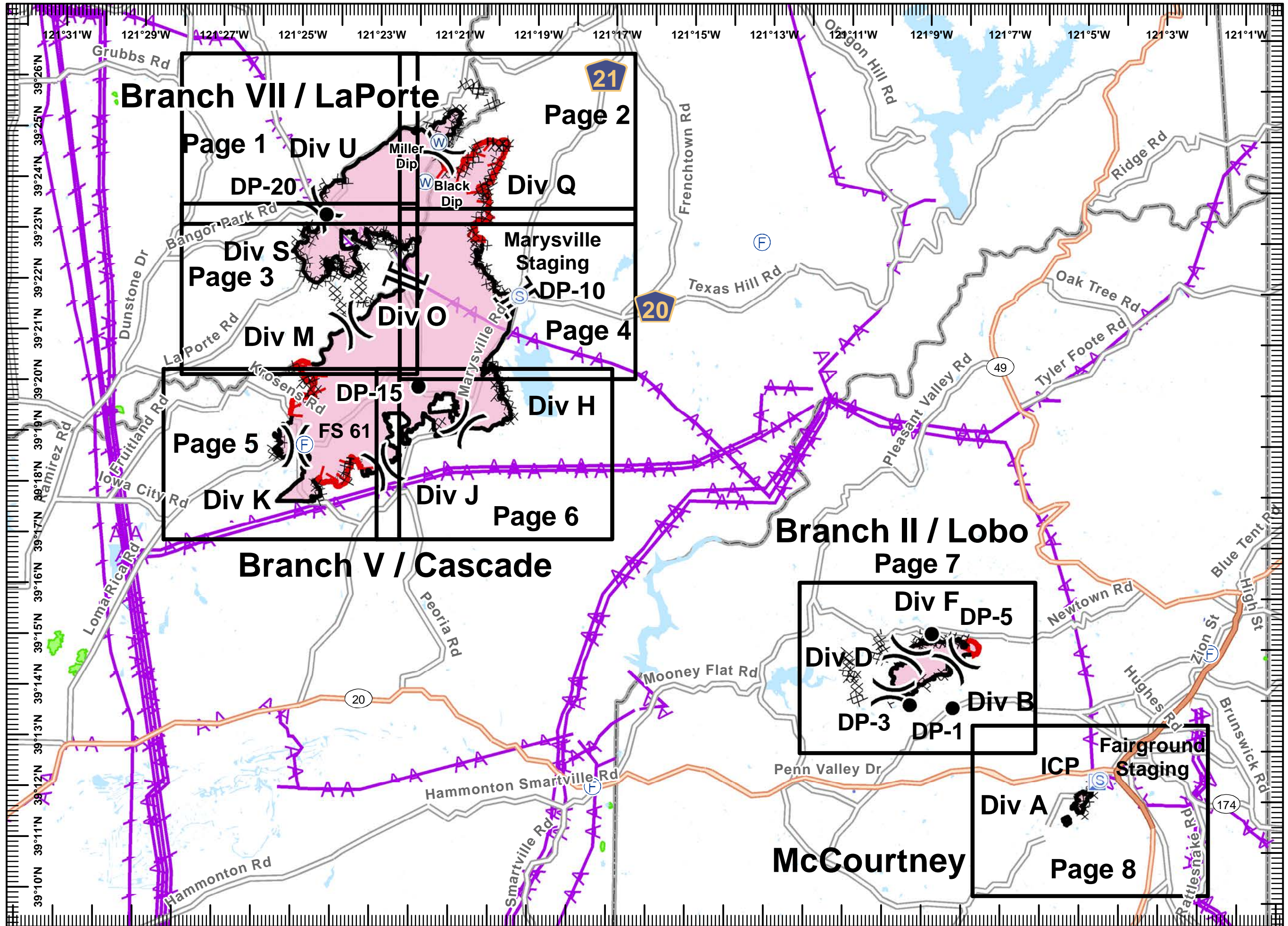
CA-NEU-026295
October 14, 2017
0700 to 0700

- Division
- Branch
- Drop Point
- Staging Area
- Incident Command Post
- Water Source
- Completed Line
- Uncontrolled Fire Edge
- Completed Dozer Line
- Hand Line
- Transmission Lines
- Known Mine Hazards
- Fire Station

Miles
0 0.5 1 2

1:130,000

IMT2 GIS
10/14/2017
01:10 hrs





IAP MAP

Wind Complex

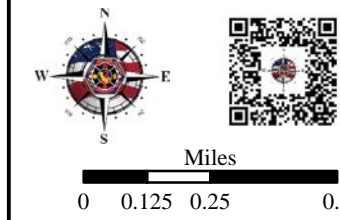
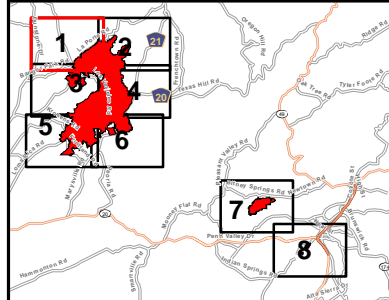
CA-NEU-026295

October 14, 2017

0700 to 0700

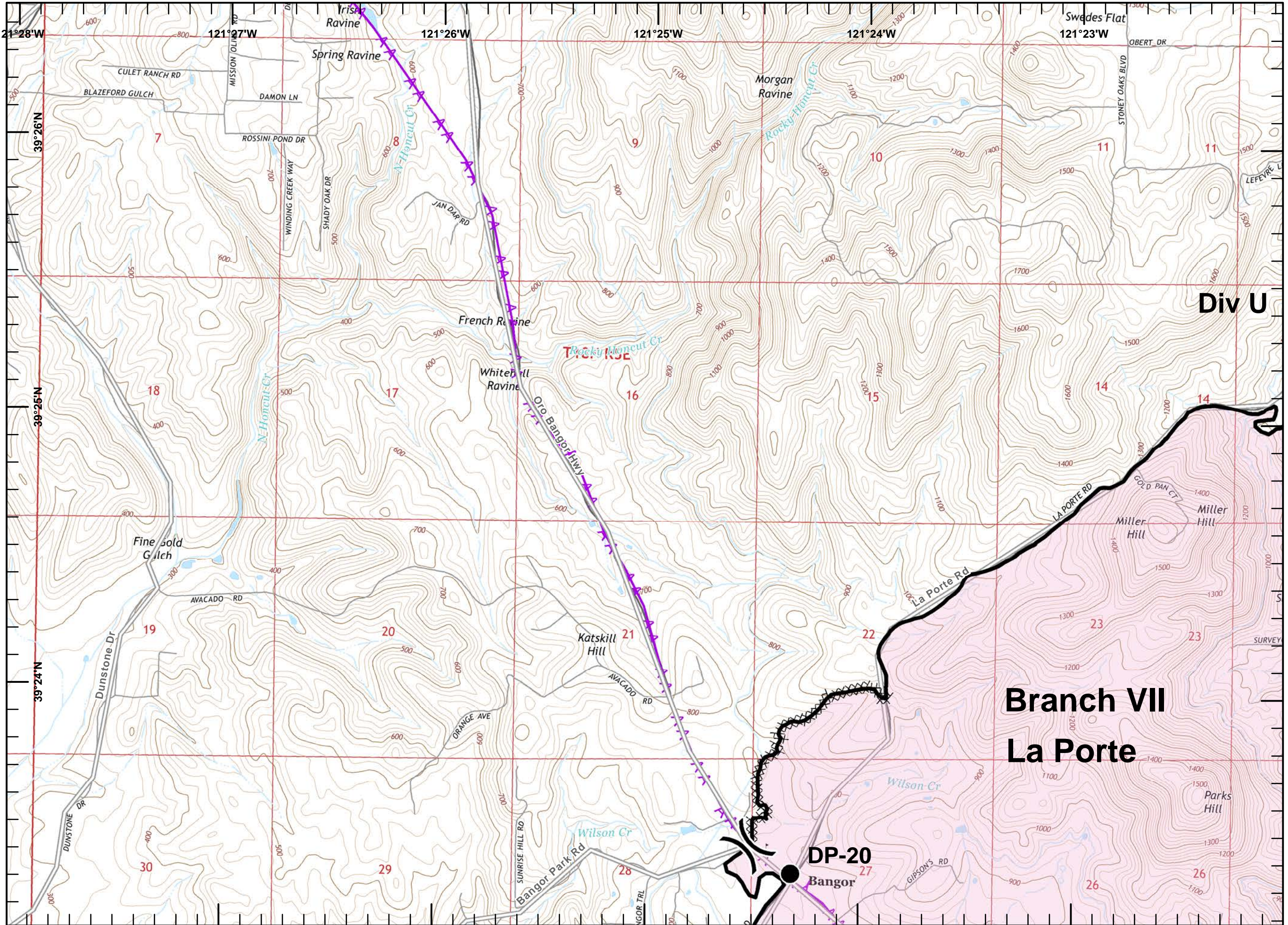
Page 1 of 8

- Division
- Branch
- Drop Point
- Staging Area
- Incident Command Post
- Water Source
- Completed Line
- Uncontrolled Fire Edge
- Completed Dozer Line
- Hand Line
- Transmission Lines
- Known Mine Hazards
- Fire Station



1:24,000

IMT2 GIS
10/14/2017
00:59 hrs





IAP MAP

Wind Complex

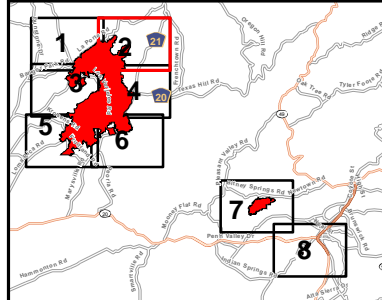
CA-NEU-026295

October 14, 2017

0700 to 0700

Page 2 of 8

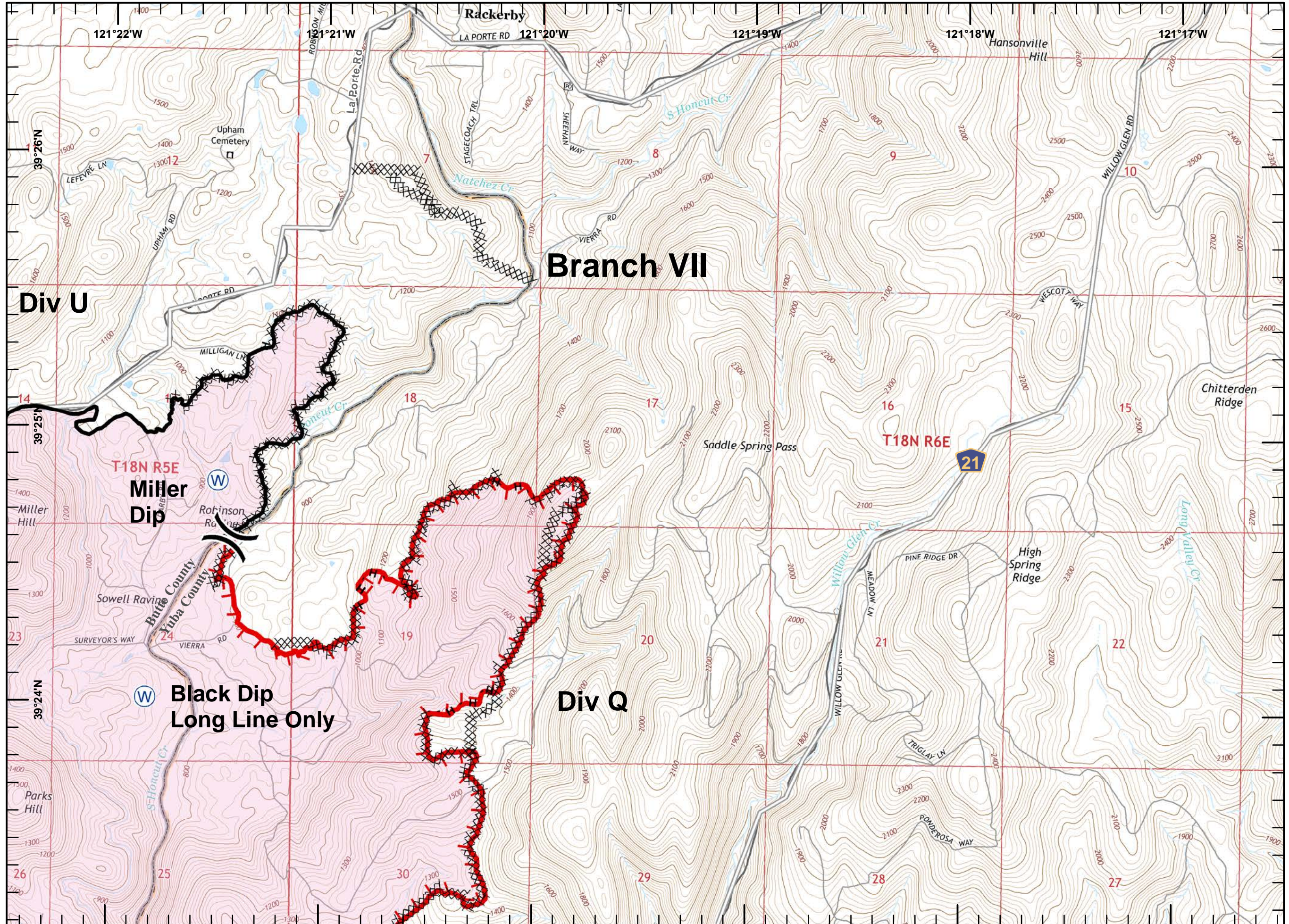
- Division
- Branch
- Drop Point
- Staging Area
- Incident Command Post
- Water Source
- Completed Line
- Uncontrolled Fire Edge
- Completed Dozer Line
- Hand Line
- Transmission Lines
- Known Mine Hazards
- Fire Station



Miles
0 0.125 0.25 0.5

1:24,000

IMT2 GIS
10/14/2017
00:59 hrs





IAP MAP

Wind Complex

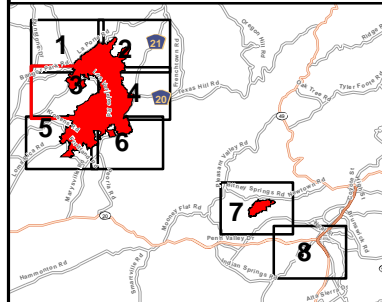
CA-NEU-026295

October 14, 2017

0700 to 0700

Page 3 of 8

- Division
- Branch
- Drop Point
- Staging Area
- Incident Command Post
- Water Source
- Completed Line
- Uncontrolled Fire Edge
- Completed Dozer Line
- Hand Line
- Transmission Lines
- Known Mine Hazards
- Fire Station

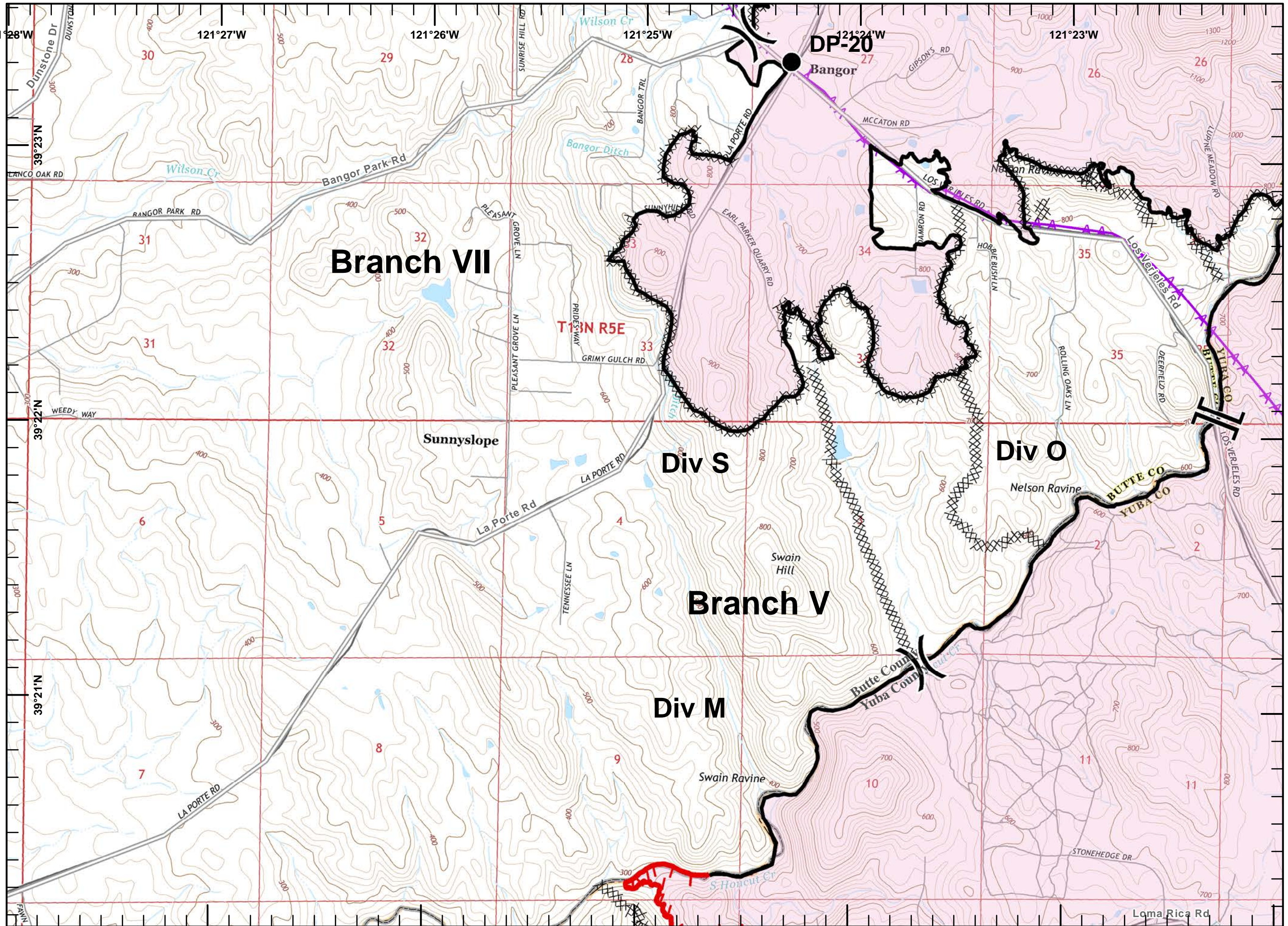


Miles

0 0.125 0.25 0.5

1:24,000

IMT2 GIS
10/14/2017
01:00 hrs





IAP MAP

Wind Complex

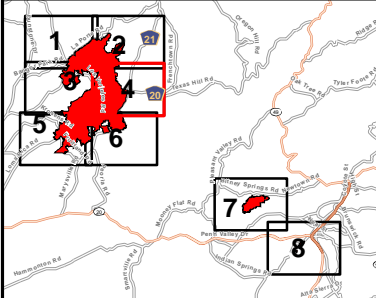
CA-NEU-026295

October 14, 2017

0700 to 0700

Page 4 of 8

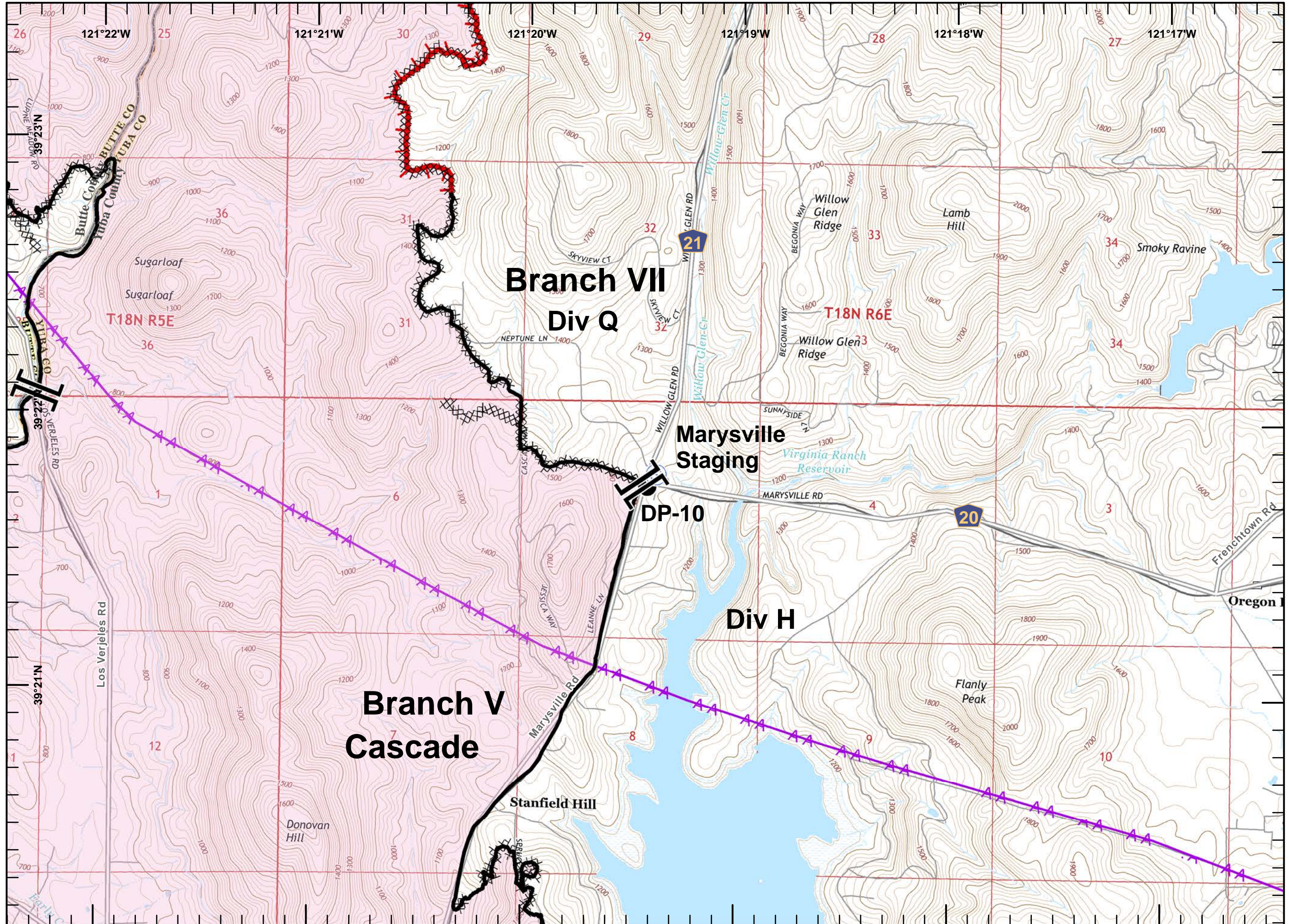
- Division
- Branch
- Drop Point
- Staging Area
- Incident Command Post
- Water Source
- Completed Line
- Uncontrolled Fire Edge
- Completed Dozer Line
- Hand Line
- Transmission Lines
- Known Mine Hazards
- Fire Station



Miles
0 0.125 0.25 0.5

1:24,000

IMT2 GIS
10/14/2017
01:01 hrs





IAP MAP

Wind Complex

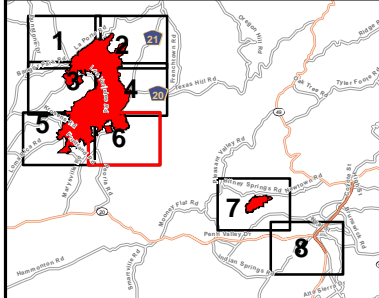
CA-NEU-026295

October 14, 2017

0700 to 0700

Page 6 of 8

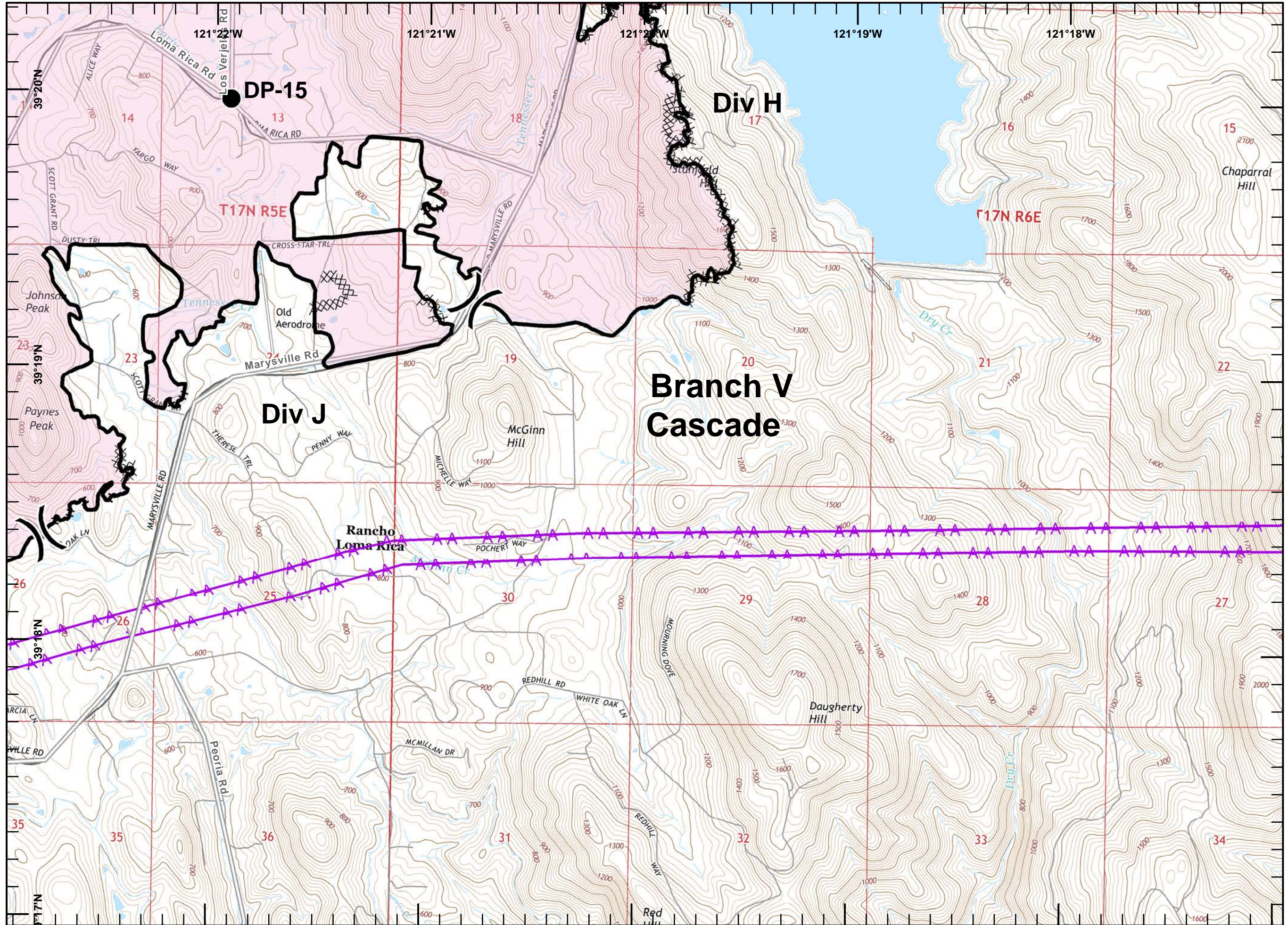
- Division
- Branch
- Drop Point
- Staging Area
- Incident Command Post
- Water Source
- Completed Line
- Uncontrolled Fire Edge
- Completed Dozer Line
- Hand Line
- Transmission Lines
- Known Mine Hazards
- Fire Station



Miles
0 0.125 0.25 0.5

1:24,000

IMT2 GIS
10/14/2017
01:02 hrs





IAP MAP

Wind Complex

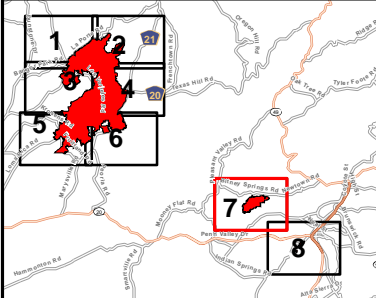
CA-NEU-026295

October 14, 2017

0700 to 0700

Page 7 of 8

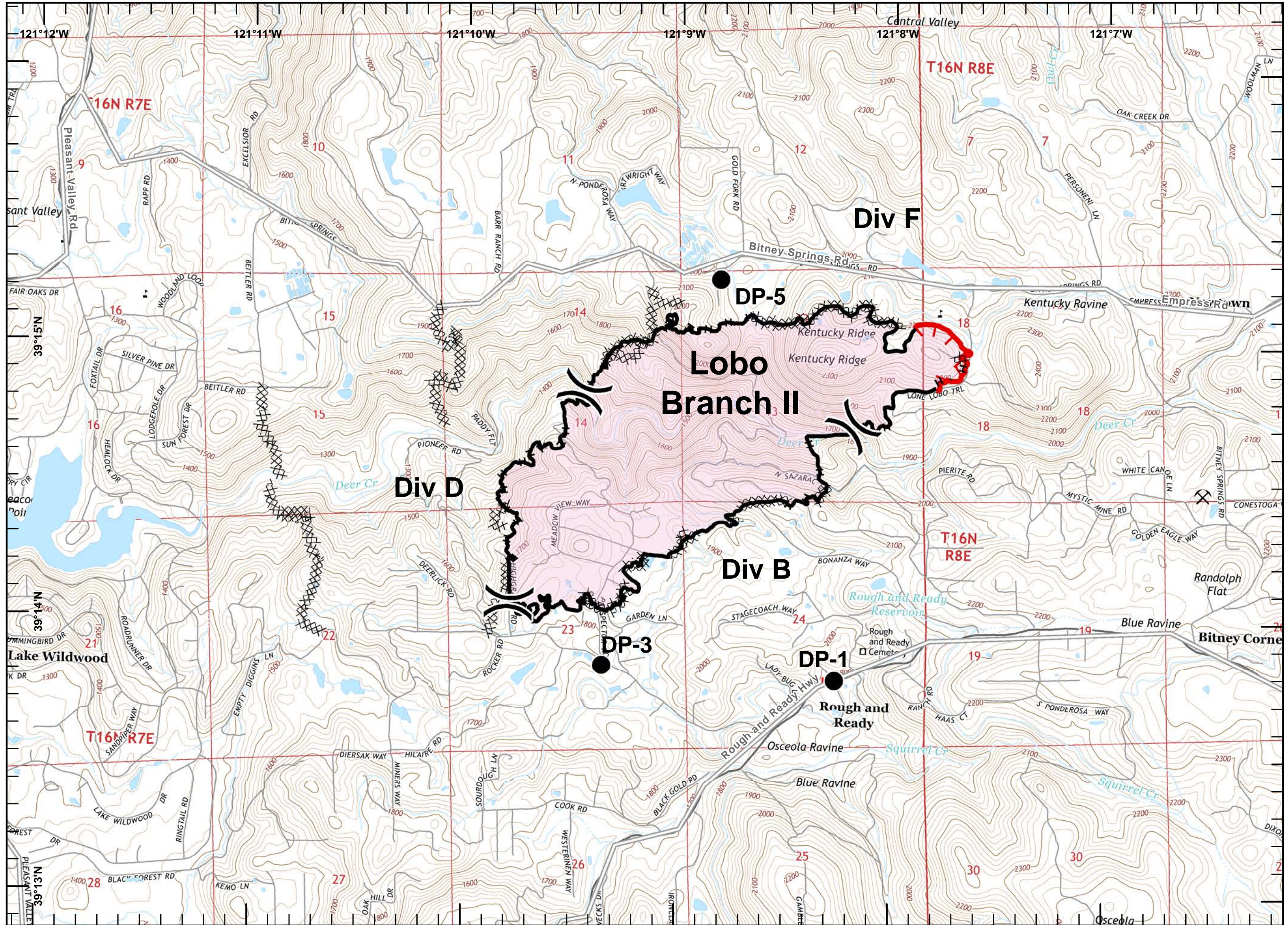
- Division
- Branch
- Drop Point
- Staging Area
- Incident Command Post
- Water Source
- Completed Line
- Uncontrolled Fire Edge
- Completed Dozer Line
- Hand Line
- Transmission Lines
- Known Mine Hazards
- Fire Station



Miles
0 0.125 0.25 0.5

1:24,000

IMT2 GIS
10/14/2017
01:03 hrs





IAP MAP

Wind Complex

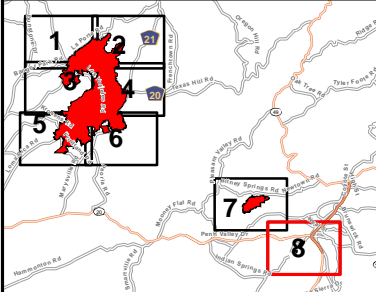
CA-NEU-026295

October 14, 2017

0700 to 0700

Page 8 of 8

- Division
- Branch
- Drop Point
- Staging Area
- Incident Command Post
- Water Source
- Completed Line
- Uncontrolled Fire Edge
- Completed Dozer Line
- Hand Line
- Transmission Lines
- Known Mine Hazards
- Fire Station



Miles
0 0.125 0.25 0.5

1:24,000

IMT2 GIS
10/14/2017
01:03 hrs

