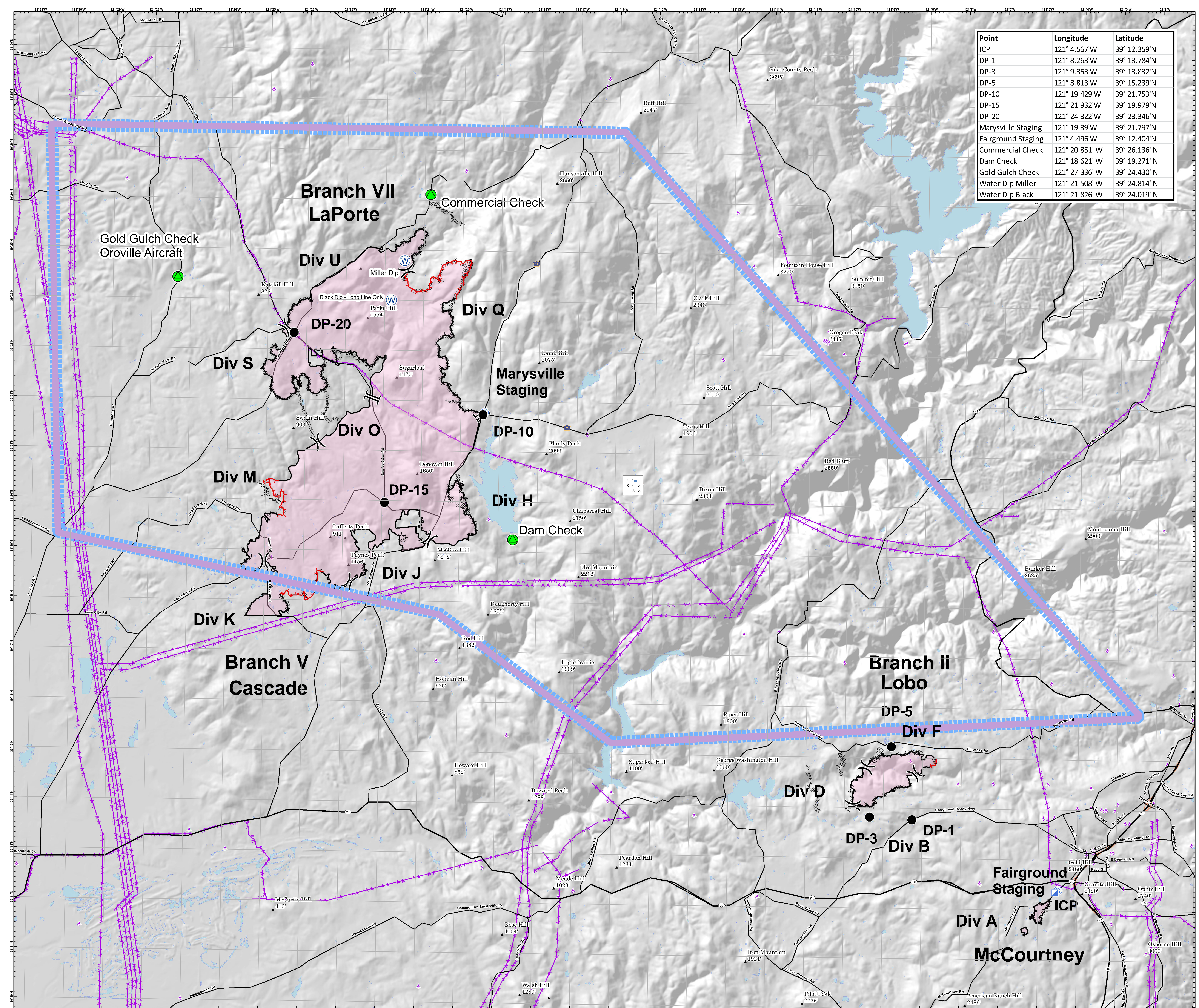




**AIR
OPERATIONS
Wind Complex
CA-NEU-026295
Oct 15, 2017**

Point	Longitude	Latitude
ICP	121° 4.567'W	39° 12.359'N
DP-1	121° 8.263'W	39° 13.784'N
DP-3	121° 9.353'W	39° 13.832'N
DP-5	121° 8.813'W	39° 15.239'N
DP-10	121° 19.429'W	39° 21.753'N
DP-15	121° 21.932'W	39° 19.979'N
DP-20	121° 24.322'W	39° 23.346'N
Marysville Staging	121° 19.39'W	39° 21.797'N
Fairground Staging	121° 4.496'W	39° 12.404'N
Commercial Check	121° 20.851' W	39° 26.136' N
Dam Check	121° 18.621' W	39° 19.271' N
Gold Gulch Check	121° 27.336' W	39° 24.430' N
Water Dip Miller	121° 21.508' W	39° 24.814' N
Water Dip Black	121° 21.826' W	39° 24.019' N



- Water Dip
- Division
- Branch
- Drop Point
- Staging Area
- Incident Command Post
- Uncontrolled Fire Edge
- Check Points
- TFR
- Aerial Hazard
- Transmission Lines



Miles
0 0.5 1 2

1:42,000

IMT 2 GIS
October 14, 2017
2206