



# IAP Index

## Wind Complex

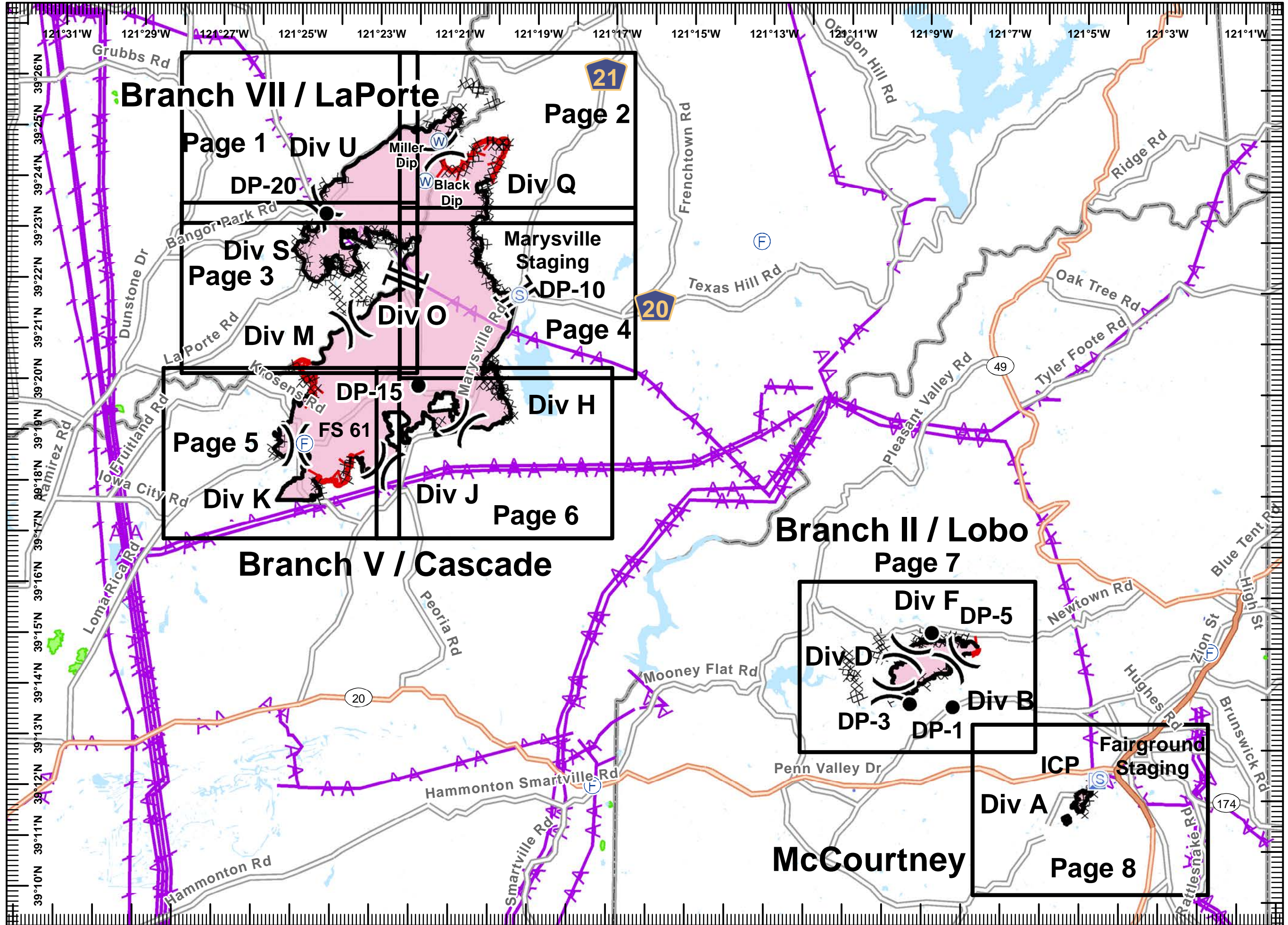
CA-NEU-026295  
October 15, 2017  
0700 to 0700

- Division
- Branch
- Drop Point
- Staging Area
- Incident Command Post
- Water Source
- Completed Line
- Uncontrolled Fire Edge
- Completed Dozer Line
- Hand Line
- Transmission Lines
- Known Mine Hazards
- Fire Station

Miles  
0 0.5 1 2

1:130,000

IMT2 GIS  
10/14/2017  
22:21 hrs





# IAP MAP

## Wind Complex

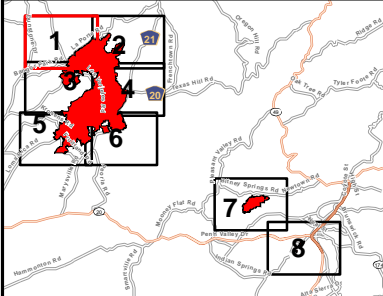
CA-NEU-026295

October 15, 2017

0700 to 0700

Page 1 of 8

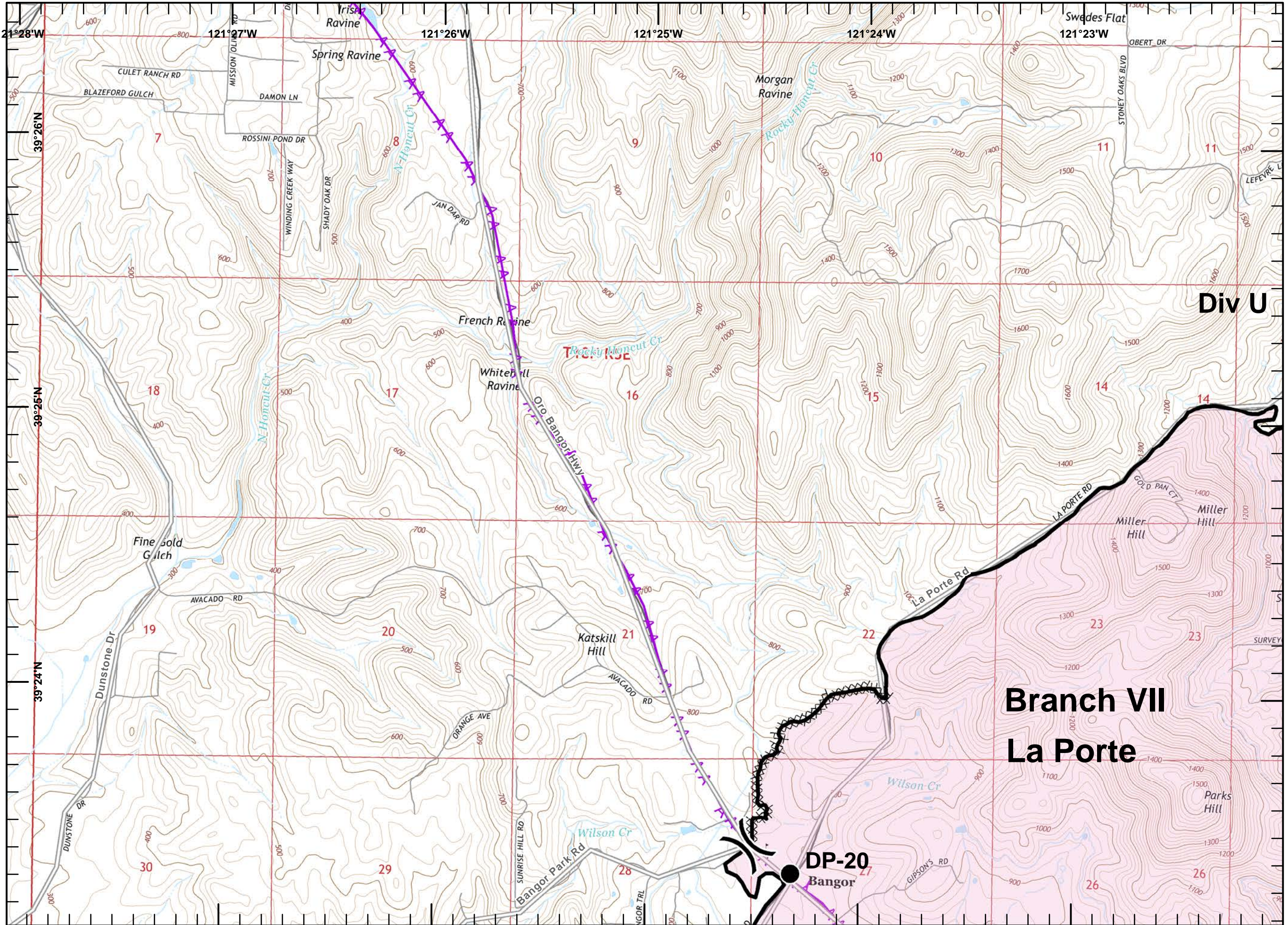
- Division
- Branch
- Drop Point
- Staging Area
- Incident Command Post
- Water Source
- Completed Line
- Uncontrolled Fire Edge
- Completed Dozer Line
- Hand Line
- Transmission Lines
- Known Mine Hazards
- Fire Station



Miles  
0 0.125 0.25 0.5

1:24,000

IMT2 GIS  
10/14/2017  
22:45 hrs





# IAP MAP

## Wind Complex

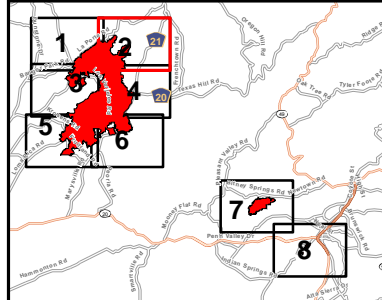
CA-NEU-026295

October 15, 2017

0700 to 0700

Page 2 of 8

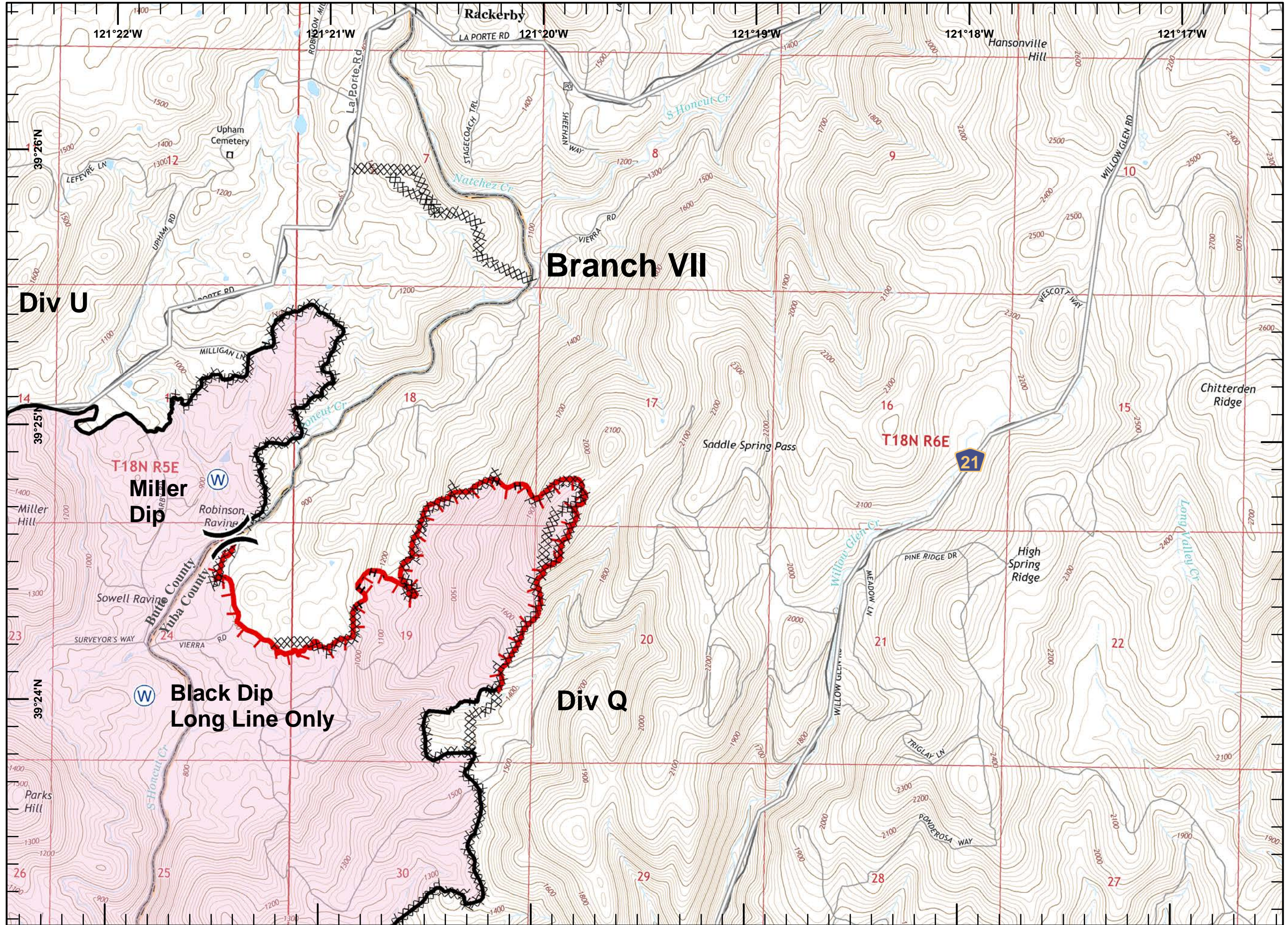
- Division
- Branch
- Drop Point
- Staging Area
- Incident Command Post
- Water Source
- Completed Line
- Uncontrolled Fire Edge
- Completed Dozer Line
- Hand Line
- Transmission Lines
- Known Mine Hazards
- Fire Station



Miles  
0 0.125 0.25 0.5

1:24,000

IMT2 GIS  
10/14/2017  
22:46 hrs





# IAP MAP

## Wind Complex

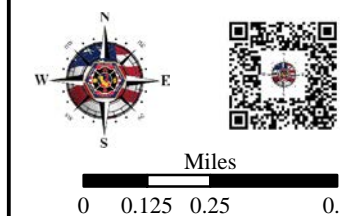
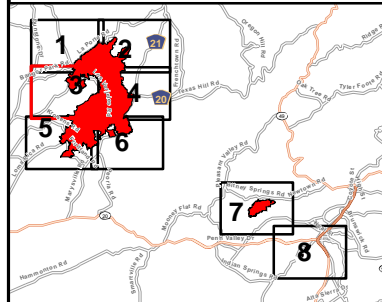
CA-NEU-026295

October 15, 2017

0700 to 0700

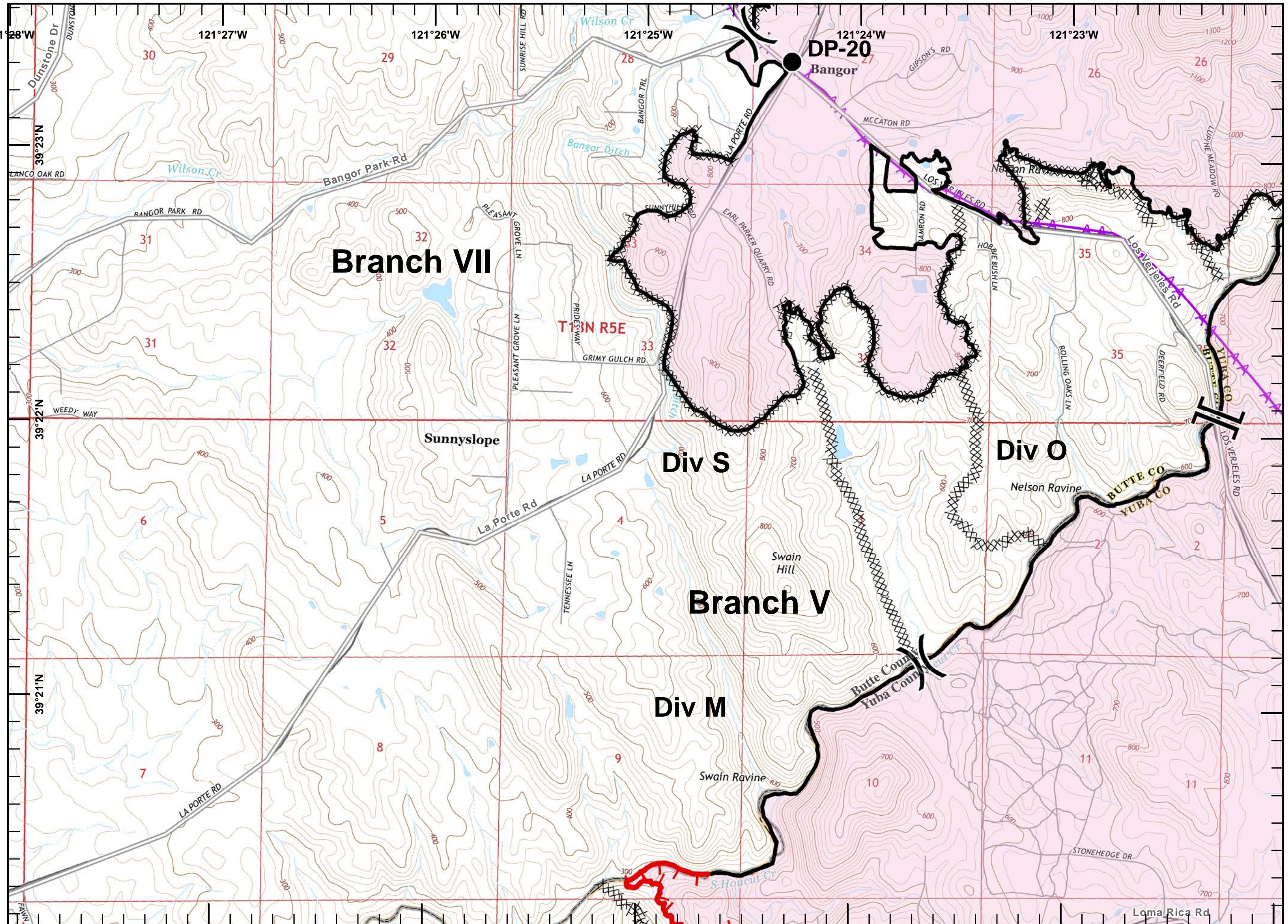
Page 3 of 8

- Division
- Branch
- Drop Point
- Staging Area
- Incident Command Post
- Water Source
- Completed Line
- Uncontrolled Fire Edge
- Completed Dozer Line
- Hand Line
- Transmission Lines
- Known Mine Hazards
- Fire Station



1:24,000

IMT2 GIS  
10/14/2017  
22:46 hrs





# IAP MAP

## Wind Complex

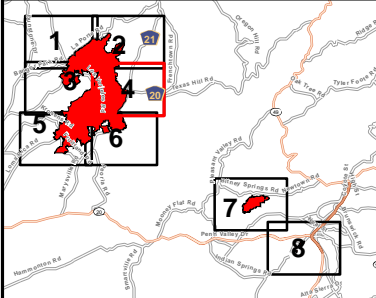
CA-NEU-026295

October 15, 2017

0700 to 0700

Page 4 of 8

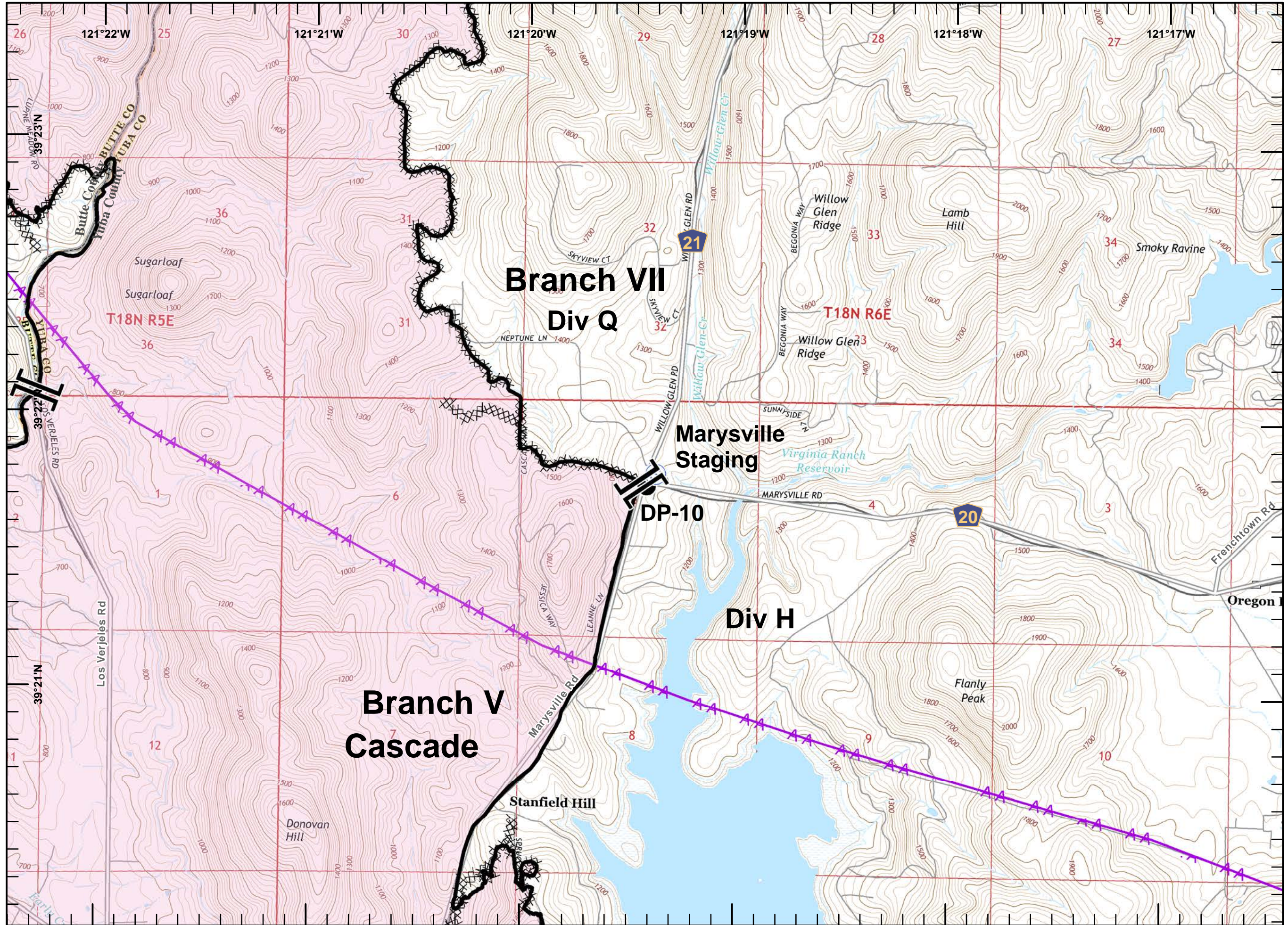
- Division
- Branch
- Drop Point
- Staging Area
- Incident Command Post
- Water Source
- Completed Line
- Uncontrolled Fire Edge
- Completed Dozer Line
- Hand Line
- Transmission Lines
- Known Mine Hazards
- Fire Station



Miles  
0 0.125 0.25 0.5

1:24,000

IMT2 GIS  
10/14/2017  
22:46 hrs







# IAP MAP

## Wind Complex

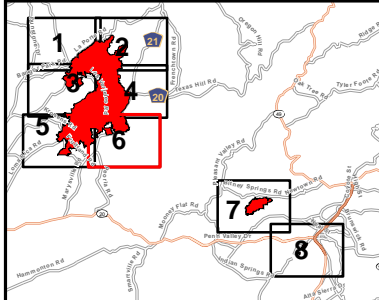
CA-NEU-026295

October 15, 2017

0700 to 0700

Page 6 of 8

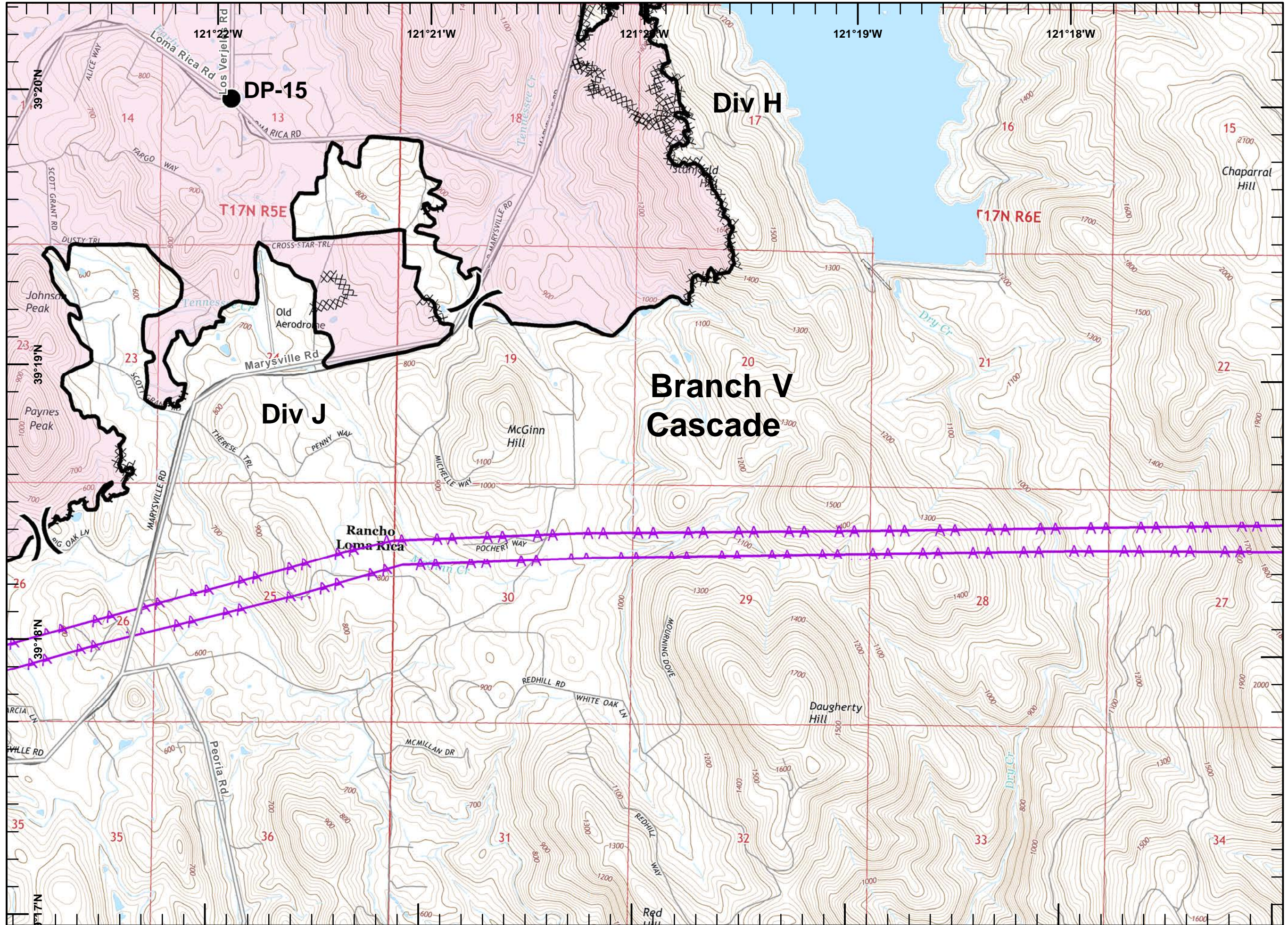
- Division
- Branch
- Drop Point
- Staging Area
- Incident Command Post
- Water Source
- Completed Line
- Uncontrolled Fire Edge
- Completed Dozer Line
- Hand Line
- Transmission Lines
- Known Mine Hazards
- Fire Station



Miles  
0 0.125 0.25 0.5

1:24,000

IMT2 GIS  
10/14/2017  
22:47 hrs





# IAP MAP

## Wind Complex

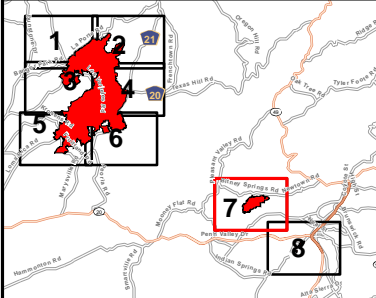
CA-NEU-026295

October 15, 2017

0700 to 0700

Page 7 of 8

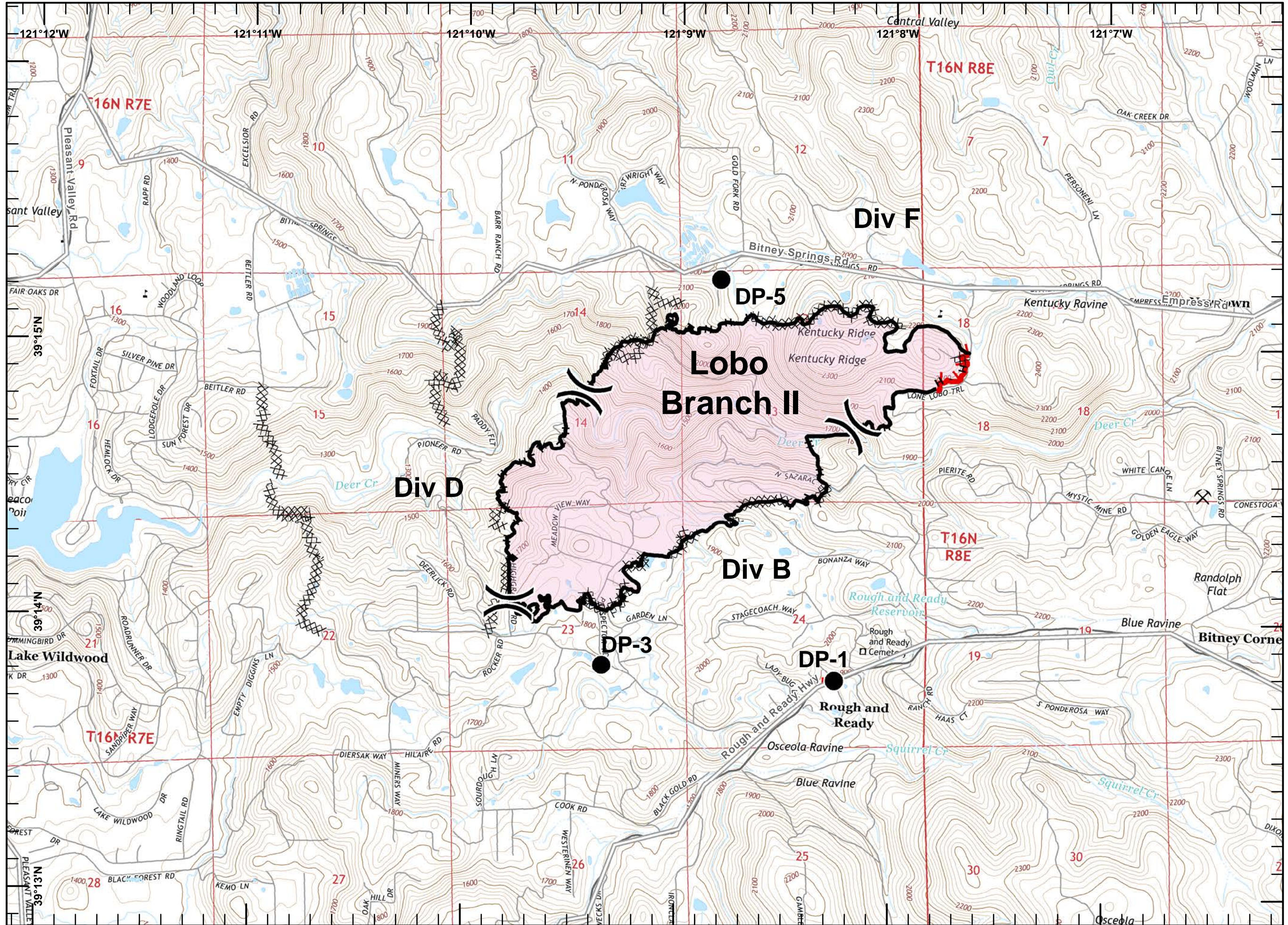
- Division
- Branch
- Drop Point
- Staging Area
- Incident Command Post
- Water Source
- Completed Line
- Uncontrolled Fire Edge
- Completed Dozer Line
- Hand Line
- Transmission Lines
- Known Mine Hazards
- Fire Station



Miles  
0 0.125 0.25 0.5

1:24,000

IMT2 GIS  
10/14/2017  
22:47 hrs







# IAP MAP

## Wind Complex

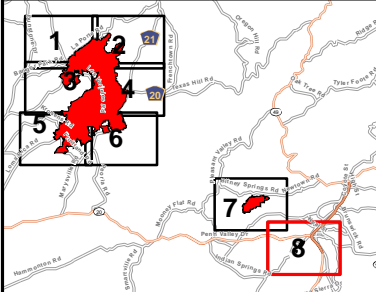
CA-NEU-026295

October 15, 2017

0700 to 0700

Page 8 of 8

- Division
- Branch
- Drop Point
- Staging Area
- Incident Command Post
- Water Source
- Completed Line
- Uncontrolled Fire Edge
- Completed Dozer Line
- Hand Line
- Transmission Lines
- Known Mine Hazards
- Fire Station



Miles  
0 0.125 0.25 0.5

1:24,000

IMT2 GIS  
10/14/2017  
22:48 hrs

