

# WIND COMPLEX

CA-NEU-026295

## INCIDENT ACTION PLAN



### OPERATIONAL PERIOD

10/10/2017 0700

to

10/11/2017 0700





## INCIDENT OBJECTIVES (ICS 202)

<b>1. Incident Name:</b> <p style="text-align: center;">WIND COMPLEX</p>	<b>2. Operational Period:</b>	Date From: 10/10/2017 Time From: 0700	Date To: 10/11/2017 Time To: 0700
---	-------------------------------	--	--------------------------------------

**3. Objective(s):**

- Management Objectives:
- Provide for emergency personnel and public safety at all times.
  - Protect property, improvements, and infrastructure.
  - Ensure repopulation takes place in a quick, efficient, and effective manner.
  - Ensure coordinated, timely and accurate release of public information.
  - Foster and maintain relationships with all cooperators and stakeholders.
  - Protect economic, natural, cultural and heritage resources.
  - Maintain fiscal accountability and keep costs commensurate with values at risk.

- Control Objectives:
- Division A - McCourtney Incident:**
- Keep the fire within the established perimeter
- Branch II - Lobo Incident:**
- Keep the fire North of Rough and Ready Highway
  - Keep the fire South of Bitney Springs Road
  - Keep the fire East of Lake Wildwood Estates
  - Keep the fire West of the intersection of Bitney Springs Road and Newtown Road
- Branch V - Cascade Incident:**
- Keep the fire North of Fruitland Road
  - Keep the fire South of Rocky Huncut Creek
  - Keep the fire East of Loma Rica Road and Iowa City
  - Keep the fire West of Marysville Road
- Branch VII - LaPorte Incident:**
- Keep the fire North of Fruitland Road
  - Keep the fire South of Rocky Huncut Creek
  - Keep the fire East of Robinson Mill Road
  - Keep the fire West of Dunston Road

**General Situational Awareness:**

- Draw down of resources, critically dry and receptive fuel beds, high likelihood of strong winds.

**5. Site Safety Plan Required?** Yes  No

**Approved Site Safety Plan(s) Located at:**

**6. Incident Action Plan**

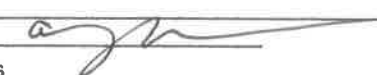
<input checked="" type="checkbox"/> ICS 203	<input checked="" type="checkbox"/> ICS 204	<input type="checkbox"/> WUI Guidelines	<input type="checkbox"/> Finance Message
<input checked="" type="checkbox"/> Weather Forecast	<input checked="" type="checkbox"/> ICS 220	<input type="checkbox"/> Suppression Repair Plan	<input checked="" type="checkbox"/> PIO Message
<input checked="" type="checkbox"/> Fire Behavior	<input checked="" type="checkbox"/> ICS 206	<input type="checkbox"/> Logistics Message	<input checked="" type="checkbox"/> Transportation Map
<input checked="" type="checkbox"/> Safety Message	<input checked="" type="checkbox"/> ICS 205	<input type="checkbox"/> Demob Plan	<input type="checkbox"/> Base Camp Map
<input checked="" type="checkbox"/> ICS-215a	<input type="checkbox"/> Firing Ops Checklist	<input checked="" type="checkbox"/> Training Specialist	<input checked="" type="checkbox"/> ICS 214

**7. Prepared By:** Andy Murphy      Position/Title: PSC      Signature:

**8. Approved by Incident Commander:** Glenn Patterson      Signature:

ICS 202

## ORGANIZATION ASSIGNMENT LIST (ICS 203)

<b>1. Incident Name:</b> WIND COMPLEX		<b>2. Operational Period: Date From:</b> 10/10/2017 Time From: 0700		<b>Date To:</b> 10/11/2017 Time To: 0700	
<b>3. Incident Commander(s) and Command Staff:</b>			<b>7. Operation Section:</b>		
IC/UC's	Glenn Patterson / Dave Allen (T)		Chief	Charlie Blankenheim	
Deputy	Ron Myers		Deputy	Mark Brunton	
Safety Officer	Steve Walker		Night Ops	Mike Inman	
Information Officer	Ron Oatman				
Liaison Officer	Mike Martin		<b>Branch</b>		
			Division/Group	A	
			Division/Group		
			Division/Group		
<b>4. Agency/Organization Representatives:</b>			Division/Group		
Agency/Organization	Name		Division/Group		
Yuba County Sheriff	Sgt. Smith		Division/Group		
Butte County Sheriff	Lt. Smith		<b>Branch</b>	<b>II - Lobo</b>	<b>Nick Casci / Jim Hudson (T)</b>
Nevada County Sheriff	Capt. Pettitt		Division/Group	B	
Red Cross	Artena Moon		Division/Group	D	
C.H.P.	Lt. Steffenson		Division/Group	F	
PG&E	Rob Cone		Division/Group		
CDCR	Lt. Hill		Division/Group		
Cal OES	Corey Zander		<b>Branch</b>	<b>V - Cascade</b>	<b>Landon Haack</b>
Nev. County Animal Evac	Bill Alexander		Division/Group	H	
Cal Trans	Shelly Pangman		Division/Group	J	
			Division/Group	K	
			Division/Group	M	
			Division/Group	O	
			<b>Branch</b>	<b>VII - La Porte</b>	<b>Sean Dakin</b>
<b>5. Planning Section:</b>			Division/Group	Q	
Chief	Andy Murphy		Division/Group	S	
Deputy	Jeff Windham		Division/Group	U	
Resource Unit	Keith Tsudama / Andy Hubbs		Division/Group		
Situation Unit	Rob Clark / Dan Brown		Division/Group		
Documentation Unit			<b>Branch</b>		
Demobilization Unit	Nick Lawlor		Staging Area	Marysville	
GISS	Fred Postler		Staging Area	Fairground	
FBAN	Todd Hopkins		Division/Group		
IMET			Division/Group		
Training Tech Spec	Claudia Soiza		Division/Group		
			<b>Air Operations Branch</b>	<b>Director:</b>	<b>Rob Sonsteng</b>
<b>6. Logistics Section</b>			Air Support Grp Sup	Greg Bradshaw	
Chief	Ken Lowe / Milford Ferguson		Helibase Manager	Byron Vance	
Supply Unit	Matt Siebecke				
Facilities Unit	Devon Ellsworth		<b>8. Finance/Administration Section:</b>		
Ground Support Unit	Tom Stroing		Chief	Bill Winter / Dale Barnett	
Hired Equipment Tech	Jason Marsh		Time Unit	Chuck Carrol / Andre Schmidt(T)	
Communications Unit	John Aguilera		Procurement Unit	Jason McDermott / Sandra Jewel (T)	
Medical Unit	Matt Lathrop / Justin Vanderhuist		Comp/Claims Unit	Joe Ekblad	
Motel Tech Spec	Paul Pumarejo		Cost Unit	Jennifer Fagen / Michelle Patton (T)	
<b>Prepared By: Name:</b>	Andy Murphy	<b>Position/Title:</b>	PSC	<b>Signature:</b>	
<b>ICS 203</b>		<b>Date/Time:</b>	10/9/2017 2300 hours		

FNUS76 KSTO 100443  
FWSSTO

SPOT FORECAST for lobo...calfire  
National Weather Service SACRAMENTO CA  
943 PM PDT Mon Oct 9 2017

Forecast is based on request time of 2000 PDT on October 09.  
If conditions become unrepresentative...contact the National  
Weather  
Service.

.DISCUSSION...

A dry weather system will pass just north of the fire site Tuesday  
into Wednesday. Relative humidity will remain low with poor  
overnight recovery. Winds will be shifting the next couple of days  
as the system approaches and moves through the region and will  
become west to northwest on Wednesday.

.TUESDAY...

Sky/weather.....Sunny.  
Max temperature.....78-81.  
Min humidity.....14-17 percent.  
Wind (20 ft).....  
Slope/valley.....East winds 2 to 4 mph shifting to the  
south 4 to 7 mph in the afternoon.  
Ridgetop.....South 9 mph.  
Mixing height.....1900-2700 ft AGL increasing to 6200-7400 ft AGL  
late in the morning.  
Transport winds.....South 9 mph.  
CWR.....0 percent.  
LAL.....1.

.TUESDAY NIGHT...

Sky/weather.....Clear.  
Min temperature.....50-55.  
Max humidity.....45-50 percent.  
Wind (20 ft).....  
Slope/valley.....Southeast winds 4 to 7 mph.  
Ridgetop.....Southeast 5 mph.  
Mixing height.....6600-7300 ft AGL decreasing to 2400-2900 ft AGL  
late in the evening.  
Transport winds.....Southeast 5 mph.  
CWR.....0 percent.  
LAL.....1.

\$\$

Forecaster...RB

# FIRE BEHAVIOR FORECAST

<b>FORECAST NUMBER:</b> 001	<b>TYPE OF FIRE:</b> Wildfire
<b>FIRE NAME:</b> Wind Complex	<b>OPERATIONAL PERIOD:</b> 10/10/2017 0700-0700
<b>DATE ISSUED:</b> October 9, 2017	<b>TIME ISSUED:</b> 2300
<b>UNIT:</b> CA-NEU-026295	<b>SIGNED:</b> <i>Todd Hopkins</i> <b>Typed/printed:</b> Todd Hopkins (FBAN)

## INPUTS

**WEATHER SUMMARY:** A dry weather system will pass just north of the fire site Tuesday into Wednesday. Relative humidity will remain low with poor overnight recovery. Winds will be shifting the next couple of days as the system approaches and moves through the region and will become west to northwest on Wednesday.

**WEATHER:** Day: Sunny  
Night: Clear

**TEMPERATURES / HUMIDITY:** Day: 78-81 F Max Temperature / Min Humidity: 14%-17%  
Night: Min Temperature 50-55 F / Max Humidity: 45-50%

**20 FT WINDS:** Day: **Slope/Valley: Down-Drainage** East 2-4 mph in the morning, becoming South 4-9 mph in afternoon.

**Ridgetop:** South 9 mph. Gust to 15 mph.

**Night: Slope/Valley:** Southwest 4-7 mph overnight.

**Ridgetop:** Southeast 5 mph

## OUTPUTS

### FIRE BEHAVIOR

**GENERAL:** The fires are burning in a mix of grass and brush with stands of timber and timber litter that are extremely dry and have a heavy fuel loading. The fire spread was initially driven by high winds and low humidity with long range spotting. Group tree torching could cast embers and produce spot fires in receptive fuel beds, especially where timber litter fuel loading or heavy grass crops are high. Wind speeds are expected to significantly decrease from the previous day which will lead to lower rates of spread and lower spotting distances.

**Probability of Ignition:** 87%

**FDFM:** 3%

**ERC:** 64 (77 90th Percentile)

**100 HRFM:** Near 90<sup>th</sup> Percentile

**LAL:** 1

**1000 HRFM:** Near 90<sup>th</sup> Percentile

### SPECIFIC: Rates of Spread are in feet/minute

**Rate of Spread:** Grass: Head Fire: 26-111 ft/min, Flanking Fire: 4-18 ft/min, Backing Fire: 2-9 ft/min  
Brush: Head Fire: 44-88 ft/min, Flanking Fire: 6-14 ft/min, Backing Fire: 3-8 ft/min  
Timber Litter: 6-10 ft/min, Flanking Fire: 1-2 ft/min, Backing Fire: >1 ft/min

**Flame Length-** Grass: Head Fire 5-14 ft, Flanking Fire: 2-6 ft, Backing Fire: 1-5 ft  
Brush: Head Fire: 14-22 ft, Flanking Fire: 6-7 ft, Backing Fire: 5-7 ft  
Timber Litter: Head Fire: 3-6 ft, Flanking Fire: 1-3 ft, Backing Fire: >1-2 ft

**Spotting Distances-** Up to ¼ mile

### AIR OPERATIONS:

Patchy smoke and thick canopy coverage may make visibility difficult for air resources

Sunrise: 0709 Sunset: 1832

## SAFETY

- Watch out when on a hillside where rolling materials can ignite fuel below.
- Don't become complacent! Identify your safety zones and escape routes.



**WIND COMPLEX SAFETY MESSAGE**

**Maintain Situational Awareness**

**INCIDENT:** Wind Complex CA-NEU-026295      **DATE:** October 10, 2017      **TIME:** 0700-0700

**Major Hazards and Risks: Extreme fire behavior, Windy dry weather, Limited resources, Hazard trees.**

**Fatigue:** Hot weather for the next several days, be alert for signs of fatigue and take breaks as necessary. Be alert for signs of heat stress in yourself and others.

**Fire Behavior:** Fuels are receptive to fire spread. A small amount of wind on this dry fuel changes fire behavior dramatically!! Be alert to changes in wind direction and expect changes in fire behavior.

**Hazard trees:** Survey your work areas for hazard trees, flag and restrict access, use only qualified personnel for tree felling. Dead trees from bug kill. Review and follow **Hazard Tree Safety**, pg. 22-23 in your IRPG.

**Steep slopes/rolling material:** Watch your footing while hiking in steep terrain. Be careful of loose rolling debris. Maintain Situational Awareness.

**Personnel:** Manage yourself and those around you for fatigue. Drink fluids frequently and eat nutritious food regularly. As fatigue increases, injuries tend to increase also. Keep an eye on your crew and partner. Stay engaged and make smart decisions.

**Driving:** Slow Down! Drive defensively. Expect the unexpected around every curve. Drive with headlights and seatbelts on. Coordinate your movements on one-lane roads.

**Downed powerlines:** Follow power line safety guidelines (IRPG pg.24), watch out for burned out power poles.

**Review your ICS 206 and know what to do in the event of an (IWI).**

**Lookouts, Communication, Escape routes, Safety zones**

**Tailgate Safety**

- **Accountability:** everyone checks in and everyone checks out. Supervisors know where their crews are at all times
- **Communication:** everyone knows the com-plan
- **Briefing:** everyone knows the plan and the contingency plan
- **Safety gear:** everyone has the appropriate safety gear in good working condition
- **LCES:** they are clear and made known to everyone

**Fatigue Management:**

- Drink plenty of fluids:
  - Water and Gatorade
- Avoid drinking energy drinks
- Rest when you can
- Find shade when you can
- Eat nutritious food regularly
- Work within your abilities.



## WIND COMPLEX INCIDENT RISK ANALYSIS (ICS 215a)

DIV	HAZARDOUS ACTIONS/CONDITIONS	MITIGATIONS / WARNINGS / REMEDIES
ALL	<b>FATIGUE</b>	Be alert for signs of fatigue and take breaks as necessary. Monitor incoming resources for level of fatigue. Drink water before, during and after shifts, up to 1.5 gal. per shift. Rest when you can. Be alert for signs of heat stress in yourself and others; use the buddy system. Eat small meals often and when possible Drink electrolyte drinks at a 3 water to 1 sport drink ratio.
ALL	<b>EXTREME FIRE BEHAVIOR</b>	Review "Severe Fire Behavior Potential" (IRPG p.68). Monitor current weather conditions and forecasts. Make sure all personnel receive thorough briefings every shift. Be observant for wind shifts. Maintain adequate escape routes and safety zones. Advise all personnel if these are compromised or changed. Set trigger points when appropriate. Adhere to 10 Standard Orders, mitigate 18 situations, Maintain Situational Awareness.
ALL	<b>COMMUNICATIONS</b>	Monitor for changes in the communications plan. Review ICS 205 in your IAP. Monitor command, tactical, and air to ground frequencies.
ALL	<b>STEEP TERRAIN / ROLLING DEBRIS</b>	Watch your footing while hiking in steep terrain. Be careful of loose rolling debris Maintain Situational Awareness.
ALL	<b>HAZARD TREES</b>	Identify and isolate the area to provide for the safety of others. Flag and make proper notifications. Many pockets of dead trees. Do Not Fall trees out of your certification level.
ALL	<b>LINE CONSTRUCTION</b>	Conduct thorough briefing for all personnel (inside rear cover IRPG). Ensure LCES in place prior to engagement (IRPG p. 7). Establish adequate safety zones (IRPG p.8). Use Downhill Line Checklist (IRPG p. 9). Follow "Look Up, Look Down, Look Around" procedures (IRPG p. 3-4). Utilize Risk Management Process (IRPG p.1).
ALL	<b>DRIVING HAZARDS</b>	Slow Down! Drive defensively! Expect the unexpected around every curve. Drive with headlights and seatbelts on. Narrow dirt roads with limited passing room. Coordinate your movements on one lane roads. Use warning devices when operating near traffic.
ALL	<b>AIRCRAFT OPERATIONS</b>	Monitor air-to-ground frequency, they are your eyes in the sky. Use air-to-ground frequency to communicate with aircraft. Use clear, concise statements when directing aircraft.
ALL	<b>DOZER SAFETY</b>	Watch for rolling material. Monitor safe working distances. Avoid working below Dozers. Utilize communication with the operator (radio or hand signals)
ALL	<b>POWER LINES</b>	Follow <b>Power Line Safety</b> guidelines (IRPG pg.24.) Communicate power line hazards to immediate supervisor and hazard flag accordingly. Flag area around downed power lines and deny access. Treat all downed power lines as energized.
ALL	<b>STRUCTURE DEFENSE &amp; HAZARDS</b>	Conduct thorough briefing for all personnel (inside rear cover IRPG). Follow <b>Wildland Urban Interface Guidelines</b> (IRPG p. 12-16).
ALL	<b>MARIJUANA GROW OPERATIONS</b>	Use extreme caution on grow sites. Do not enter. Hazardous chemicals associated with growing operation.
Incident Name: <b>Wind Complex CA-NEU-026295</b> ICS 215a	DATE PREPARED: <b>October 9, 2017 1800hrs</b> Prepared by: Chad Thompson, Team 2 SOF(T)	OPERATIONAL PERIOD <b>October 10, 2017</b> <b>0700-0700</b>





## ASSIGNMENT LIST (ICS 204)


<b>1. Incident Name:</b> WIND COMPLEX		<b>2. Operational Period:</b> Date From: 10/10/17      Date To: 10/11/17 Time From: 0700      Time To: 0700			<b>3.</b>  Branch: <b>II - Lobo</b>  Div/Group: <b>B</b>  <b>Bravo</b> <b>Page 1 of 2</b>		
<b>4. Operations Personnel:</b> Operations Section Chief: <b>Charlie Blankenheim</b> <b>Night Ops: Mike Inman</b> Branch Director: <b>Nick Casci / Jim Hudson (T)</b> Branch Safety: TBD Division/Group Supervisor:							
<b>5. Resources Assigned:</b>		<b>** Resources Below in Bold are 12 Hour **</b>			Reporting Location, Special Equipment, Remarks, Notes, and Information Time      Location		
Resource Identifier	ALS	Leader	Personnel	Request #			
STA					0700-0700	DP 1	
STB XMD 5125B		Damico, Jim	16		0700-0700	DP 1	
STC					0700-0700	DP 1	
STC					0700-0700	DP 1	
STC					0700-0700	DP 1	
STG					0700-0700	DP 1	
AMERICAN RIVER IHC					0700-0700	DP 1	
TALLACK IHC					0700-0700	DP 1	
STL					0700-0700	DP 1	
STL					0700-0700	DP 1	
DOZ AEU 2741					0700-0700	DP 1	
DOZ PVT TAYLOR					0700-0700	DP 1	
W/T 62					0700-0700	DP 1	
W/T PVT ANDERSON					0700-0700	DP 1	
W/T					0700-0700	DP 1	
W/T					0700-0700	DP 1	
HEQB					0700-0700	DP 1	
HEQB					0700-0700	DP 1	
<b>6. Work Assignments:</b> Continue to build & improve lines Conduct damage assessment							
<b>7. Special Instructions:</b> * FEMP to be shared throughout entire Branch II * FOBS to be shared throughout entire Branch II							
<b>8. Communications</b> (radio and/or phone contact numbers needed for this assignment):							
Name	Ch	Function	Rx Freq	Rx Tone	Tx Freq	Tx Tone	Notes
CDF C2	1, 2, 3	COMMAND	151.2650	103.5	159.3300		Tone 9, Tone 11, Tone 16
CDF T24	5	TACTICAL	151.3175	192.8 (T16)	151.3175	192.8 (T16)	
CALCORD	13	MEDICAL	156.0750	156.7 (T6)	156.0750	156.7 (T6)	
SEE ICS 205	14, 15	AIR TO GROUND					CDF T15, CDF T22
GUARD	16	EMERGENCY	168.6250	0.0	168.6250	110.9 (T1)	
<b>9. Prepared by: Name:</b> Keith Tsudama		<b>Pos/Title:</b> RESL		<b>Signature:</b>			
<b>ICS 204</b>		<b>Date/Time:</b> 10/9/2017		<b>2300 hours</b>			



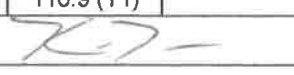
## ASSIGNMENT LIST (ICS 204)

<b>1. Incident Name:</b> WIND COMPLEX		<b>2. Operational Period:</b> Date From: 10/10/17      Date To: 10/11/17 Time From: 0700              Time To: 0700			<b>3.</b>  Branch: <b>II - Lobo</b>  Div/Group: <b>D</b>  <b>Delta</b>		
<b>4. Operations Personnel:</b> Operations Section Chief: <b>Charlie Blankenheim</b> Night Ops: <b>Mike Inman</b> Branch Director: <b>Nick Casci / Jim Hudson (T)</b> Division/Group Supervisor:							
<b>5. Resources Assigned:</b>		<b>** Resources Below in Bold are 12 Hour **</b>			Reporting Location, Special Equipment, Remarks, Notes, and Information Time                      Location		
Resource Identifier	ALS	Leader	Personnel	Request #			
T/F XSA 4154	ALS	Edmiston, Jim	20	E-26	0700-0700	DP 3	
STC					0700-0700	DP 3	
STC					0700-0700	DP 3	
STG					0700-0700	DP 3	
STG					0700-0700	DP 3	
FEATHER RIVER IHC					0700-0700	DP 3	
DOZ NEU 2341					0700-0700	DP 3	
DOZ PVT E-17					0700-0700	DP 3	
STL					0700-0700	DP 3	
W/T 88					0700-0700	DP 3	
W/T PVT E-20					0700-0700	DP 3	
W/T					0700-0700	DP 3	
W/T					0700-0700	DP 3	
HEQB					0700-0700	DP 3	
FALM					0700-0700	DP 3	
<b>6. Work Assignments:</b> Continue to build and improve lines Conduct damage assessment							
<b>7. Special Instructions:</b> * FEMP to be shared throughout entire Branch II * FOBS to be shared throughout entire Branch II							
<b>8. Communications</b> (radio and/or phone contact numbers needed for this assignment):							
Name	Ch	Function	Rx Freq	Rx Tone	Tx Freq	Tx Tone	Notes
CDF G2	1, 2, 3	COMMAND	151.2650	103.5	159.3300		Tone 9, Tone 11, Tone 16
CDF T24	5	TACTICAL	151.3175	192.8 (T16)	151.3175	192.8 (T16)	
CALCORD	13	MEDICAL	156.0750	156.7 (T6)	156.0750	156.7 (T6)	
SEE ICS 205	14, 15	AIR TO GROUND					CDF T15, CDF T22
GUARD	16	EMERGENCY	168.6250	0.0	168.6250	110.9 (T1)	
<b>9. Prepared by: Name:</b> Keith Tsudama      Pos/Title: RESL <b>ICS 204</b> Date/Time: 10/9/2017      2300 hours      Signature:							

## ASSIGNMENT LIST (ICS 204)

<b>1. Incident Name:</b> WIND COMPLEX		<b>2. Operational Period:</b> Date From: 10/10/17      Date To: 10/11/17 Time From: 0700              Time To: 0700				<b>3.</b>  Branch: <b>II - Lobo</b>  Div/Group: <b>F</b>  <b>Foxtrot</b>		
<b>4. Operations Personnel:</b> Operations Section Chief: <b>Charlie Blankenheim</b> Night Ops: <b>Mike Inman</b> Branch Director: <b>Nick Casci / Jim Hudson (T)</b> Branch Safety: <b>TBD</b> Division/Group Supervisor:								
<b>5. Resources Assigned:</b>		<b>** Resources Below in Bold are 12 Hour **</b>					Reporting Location, Special Equipment, Remarks, Notes, and Information	
Resource Identifier	ALS	Leader	Personnel	Request #	Time	Location		
STC					0700-0700	DP 5		
STC					0700-0700	DP 5		
STC					0700-0700	DP 5		
STG					0700-0700	DP 5		
STG					0700-0700	DP 5		
TAHOE IHC					0700-0700	DP 5		
DOZ ENF 3		Dan Langenerfer	2	E-13	0700-0700	DP 5		
DOZ PVT RIDGE E-29			2	E-29	0700-0700	DP 5		
W/T PVT A&F E-23			2	E-23	0700-0700	DP 5		
W/T					0700-0700	DP 5		
HEQB					0700-0700	DP 5		
FALM					0700-0700	DP 5		
<b>6. Work Assignments:</b> Continue to build and improve lines Conduct damage assessment								
<b>7. Special Instructions:</b> * FEMP to be shared throughout entire Branch II * FOBS to be shared throughout entire Branch II								
<b>8. Communications</b> (radio and/or phone contact numbers needed for this assignment):								
Name	Ch	Function	Rx Freq	Rx Tone	Tx Freq	Tx Tone	Notes	
CDF C2	1, 2, 3	COMMAND	151.2650	103.5	159.3300		Tone 9, Tone 11, Tone 16	
CDF T31	6	TACTICAL	159.3825	192.8 (T16)	159.3825	192.8 (T16)		
CALCORD	13	MEDICAL	156.0750	156.7 (T6)	156.0750	156.7 (T6)		
SEE ICS 205	14, 15	AIR TO GROUND					CDF T15, CDF T22	
GUARD	16	EMERGENCY	168.6250	0.0	168.6250	110.9 (T1)		
<b>9. Prepared by: Name:</b>		Keith Tsudama	Pos/Title:	RESL	Signature: 			
<b>ICS 204</b>		Date/Time:	10/9/2017	2300 hours				

## ASSIGNMENT LIST (ICS 204)

<b>1. Incident Name:</b> WIND COMPLEX		<b>2. Operational Period:</b> Date From: 10/10/17      Date To: 10/11/17 Time From: 0700      Time To: 0700			<b>3.</b>  Branch: <b>V - Cascade</b>  Div/Group: <b>H</b> <b>Hotel</b>		
<b>4. Operations Personnel:</b> Operations Section Chief: <b>Charlie Blankenheim</b> Night Ops: <b>Mike Inman</b> Branch Director: <b>Landon Haack</b> Branch Safety: <b>TBD</b> Division/Group Supervisor:							
<b>5. Resources Assigned:</b> <b>** Resources Below in Bold are 12 Hour **</b>							
Resource Identifier	ALS	Leader	Personnel	Request #	Reporting Location, Special Equipment, Remarks, Notes, and Information	Time      Location	
STC					0700-0700	DP 10	
ENG PNF 332		Wells, Jennifer			0700-0700	DP 10	
ENG MDF 45		Woodman, Heather			0700-0700	DP 10	
STG					0700-0700	DP 10	
DOZ PVT FILLER E-30			2	E-30	0700-0700	DP 10	
DOZ					0700-0700	DP 10	
W/T PVT NORM PAUL E-37		Norm Paul	2	E-37	0700-0700	DP 10	
W/T					0700-0700	DP 10	
HEQB					0700-0700	DP 10	
FEMP GARRIGUES O-175 *	ALS	Garrigues, Christopher	1	O-175	0700-0700	DP 10	
FEMT HANKINS O-96 *		Hankins, Dan	1	O-96	0700-0700	DP 10	
FOBS *					0700-0700	DP 10	
FOBS *					0700-0700	DP 10	
					0700-0700	DP 10	
<b>6. Work Assignments:</b> Continue to build and improve lines Conduct damage assessment							
<b>7. Special Instructions:</b> * FEMP to be shared throughout entire Branch V * FOBS to be shared throughout entire Branch V							
<b>8. Communications</b> (radio and/or phone contact numbers needed for this assignment):							
Name	Ch	Function	Rx Freq	Rx Tone	Tx Freq	Tx Tone	Notes
CDF C2	1, 2, 3	COMMAND	151.2650	103.5	159.3300		Tone 9, Tone 11, Tone 16
VFIRE 24	7	TACTICAL	154.2725	156.7 (T6)	154.2725	156.7 (T6)	
CALCORD	13	MEDICAL	156.0750	156.7 (T6)	156.0750	156.7 (T6)	
SEE ICS 205	14, 15	AIR TO GROUND					CDF T15, CDF T22
GUARD	16	EMERGENCY	168.6250	0.0	168.6250	110.9 (T1)	
<b>9. Prepared by: Name:</b> Keith Tsudama      Pos/Title: RESL      Signature: 							
<b>ICS 204</b>		Date/Time: 10/9/2017		2300 hours			

























<b>MEDICAL PLAN</b> <b>ICS 206</b>	1. INCIDENT NAME <b>Wind Complex</b>	2. DATE PREPARED 10-09-17	3. TIME PREPARED 2100 hrs	4. OPERATIONAL PERIOD 10/10/17 – 10/11/17 0700 - 0700
---------------------------------------	---	------------------------------	------------------------------	---


5. INCIDENT MEDICAL AID STATIONS			
MEDICAL AID STATIONS	LOCATION	PARAMEDICS	
		YES	NO

6. TRANSPORTATION				
A. AMBULANCE SERVICES				
NAME	LOCATION	PHONE	PARAMEDICS	
			YES	NO
Sierra Nevada Ambulance	155 Glasson Way, Grass Valley, CA	(530) 274-6001	X	
Penn Valley Fire Department	18989 Lake Forest Dr, Penn Valley, CA	(530) 477-5761	X	
American Medical Response	145 E. Oak St, Colfax, CA	(916) 563-0910	X	
CALSTAR	13750 Lincoln Way, Auburn, CA	(888) 692-6692	X	

B. INCIDENT AMBULANCES			
NAME	LOCATION	PARAMEDICS	
		YES	NO

7. HOSPITALS								
NAME	ADDRESS	TRAVEL TIME		PHONE	HELIPAD		BURN CENTER	
		AIR	GRND		YES	NO	YES	NO
Sierra Nevada Hospital	155 Glasson Way, Grass Valley LAT 39°13'65"N / LONG 121°2.86"W	10	40	(530) 274-6001	X			X
Sutter Roseville Medical Center	1 Medical Plaza Dr, Roseville LAT 38°46'019"N / LONG 121°14.88"W	25	90	(916)781-1811	X			X
UC Davis Medical Center	2315 Stockton Blvd, Sacramento LAT 38°33.29"N / LONG 121°27.19"W	45	2.5hr	(916)734-3636	X		X	
Rideout Hospital	726 4 <sup>th</sup> St, Marysville	15	35	(530)749-4300		X		X

8. MEDICAL EMERGENCY PROCEDURES	
<p><b>EMERGENCY FREQUENCY:</b> AIR GUARD</p> <p><b>LINE EMERGENCY:</b> Crew Supervisor will contact Division Supervisor with patient complaint/condition and location.</p> <ul style="list-style-type: none"> <li>Division/Group Supervisor contacts:           <ol style="list-style-type: none"> <li>Closest EMS resource</li> <li>Communications</li> </ol> </li> <li>Communications contacts:           <ol style="list-style-type: none"> <li>Ground or Air ambulance as requested</li> <li>Operations</li> <li>Safety</li> <li>Medical Unit</li> </ol> </li> <li>Division Supervisor or designee will serve as point of contact and run medical emergency on assigned channel.           <ol style="list-style-type: none"> <li>A pre-assigned tactical frequency (i.e. CALCORD) should be used for IWI and only for duration of need.</li> </ol> </li> <li>Communications will clear command channel for emergency traffic as needed and only for duration of need.</li> </ul> <p><b>CAMP EMERGENCY:</b> Contact Communications for 911 response following local procedures.</p> <ul style="list-style-type: none"> <li>Communications contacts:           <ol style="list-style-type: none"> <li>Medical Unit Leader               <ul style="list-style-type: none"> <li>-Crew Supervisor</li> <li>-Logistics</li> <li>-Comps/Claims</li> </ul> </li> <li>Safety</li> </ol> </li> </ul>	<p><b>INJURY REPORTING PROCEDURES</b></p> <p>NATURE OF INJURY _____</p> <p>LOCATION OF PATIENT _____</p> <p>POINT OF CONTACT _____</p> <p>TRANSPORTATION REQUESTED BY: AIR ___ GROUND ___</p> <p>POINT OF PICKUP _____</p> <p>LAT _____ LONG _____</p> <p>PATIENT UNIT ID _____</p> <p>IS AN EMT WITH PATIENT: YES ___ NO ___</p> <p>AGE _____</p> <p>SEX: MALE ___ FEMALE ___</p> <p><b>ALL EMERGENCIES---Secure the area and identify witnesses for later investigation. Keep an accurate log of events.</b></p>

ICS 206 (Rev 03/12) FR	9. PREPARED BY: (Medical Unit Leader) Justin VanderHulst (MEDL) 	10. REVIEWED BY: (Safety Officer)
---------------------------	--	-----------------------------------

# ICS 205 - INCIDENT RADIO COMMUNICATIONS PLAN

<b>1. Incident Name:</b> <b>WIND COMPLEX</b>		<b>2. Date/Time Prepared</b> Date: 10/9/2017 Time: 2000		<b>3. Operational Period:</b> Date From: 10/10/2017 Time From: 0700		<b>Date To:</b> 10/11/2017 <b>Time To:</b> 0700		
<b>Controlled Unclassified Information//Basic</b>								
<b>4. Communications</b>								
Ch#	Function	Name	Assigned To	Rx Freq	Rx Tone	Tx Freq	Tx Tone	Notes
1	COMMAND	CDF CMD 2	INCIDENT WIDE	151.2650	103.5 (T8)	159.3300	100.0 (T9)	TONE 9 - OREGON PEAK
2	COMMAND	CDF CMD 2	INCIDENT WIDE	151.2650	103.5 (T8)	159.3300	114.8 (T11)	TONE 11 - ALDER SPRINGS
3	COMMAND	CDF CMD 2	INCIDENT WIDE	151.2650	103.5 (T8)	159.3300	192.8 (T16)	TONE 16 - WOLF MTN
4	TACTICAL	CDF TAC 1	DIV A	151.2575	192.8 (T16)	151.2575	192.8 (T16)	
5	TACTICAL	CDF TAC 24	BRANCH II DIV B & D	151.3175	192.8 (T16)	151.3175	192.8 (T16)	
6	TACTICAL	CDF TAC 31	BRANCH II DIV F	159.3825	192.8 (T16)	159.3825	192.8 (T16)	
7	TACTICAL	VFIRE 24	BRANCH V DIV H & J	154.2725	156.7 (T6)	154.2725	156.7 (T6)	
8	TACTICAL	VFIRE 25	BRANCH V DIV K & M	154.2875	156.7 (T6)	154.2875	156.7 (T6)	
9	TACTICAL	VFIRE 26	BRANCH V DIV O	154.3025	156.7 (T6)	154.3025	156.7 (T6)	
10	TACTICAL	NIFC TAC 5	BRANCH VII DIV Q & S	166.7250	0.0	166.7250	0.0	
11	TACTICAL	NIFC TAC 6	BRANCH VII DIV U	166.7750	0.0	166.7750	0.0	
12								
13	EMS COORDINATION	CALCORD	INCIDENT WIDE	156.0750	156.7 (T6)	156.0750	156.7 (T6)	
14	AIR TO GROUND	CDF T15	INCIDENT WIDE	159.2700	192.8 (T16)	159.2700	192.8 (T16)	LOBO BRANCH
15	AIR TO GROUND	CDF T22	INCIDENT WIDE	159.4050	192.8 (T16)	159.4050	192.8 (T16)	CASCADE & LA PORTE BRANCH
16	EMERGENCY ONLY	AIR GUARD	INCIDENT WIDE	168.6250	0.0	168.6250	110.9 (T1)	GPH/DPH, 16 CH RADIOS
17								
18								
19								
20	EMERGENCY ONLY	AIR GUARD	INCIDENT WIDE	168.6250	0.0	168.6250	110.9 (T1)	GPH/DPH CMD, 20 CH RADIOS
<b>5. Special Instructions</b>								
<b>Controlled Unclassified Information//Basic</b>								
<b>Use the ICS 205 to reference and to correlate with the ICS 204's depending on your work assignments</b>								
<b>6. Prepared by (Communications Unit Leader):</b> Name: John Aguilera, COML IMT #2				<b>Signature:</b> _____				
ICS 205				<b>Date/Time:</b> 10/9/17 1800				

# ***TRAINING SPECIALIST MESSAGE***

**A Training Specialist is now on the incident.**

## ***ALL ASSIGNED TRAINEES***

**working on Position Task Books will need to register with the Incident Training Specialist in order to receive proper credit for your assignment.**

**The Training Specialist is available immediately following the morning Operations Briefing.  
Location: Red Building, next to check-in**

## **TRAINING SPECIALIST**

**Claudia Soiza  
Cell-(949)632-7813**

**Incident Trainee/Trainer Data Form  
Wind Complex CA-NEU 026295**

Training Specialist: Claudia Soiza      949.632.7813

- All Incident trainees, including those on Firefighting Modules at your earliest opportunity complete this form and see the Training Specialist.
- Prior to or as you process through DEMOB, remember to close your training package. To close your training package bring: 1) A performance rating from your trainer. (ICS 225)  
2) Your task book that has as many entries as possible by your Trainer.

**Trainee Data**

Trainee Name: \_\_\_\_\_ ICS Trainee Position: \_\_\_\_\_

Request # (A,C,E, or O): \_\_\_\_\_ Agency Designator ( Ex. CA-RRU): \_\_\_\_\_

Ordered as Trainee? Y N      Priority Trainee \_\_\_\_ Local Forest Trainee \_\_\_\_ IMT Trainee

Date Assigned: \_\_\_\_\_ Cell / Contact # While on Incident: \_\_\_\_\_

---

**Training Records Mailed To: (Fire Chief, Training Officer):**

Name: \_\_\_\_\_ Title \_\_\_\_\_

Name of Agency/Unit: \_\_\_\_\_

Agency/Unit Address: \_\_\_\_\_

City: \_\_\_\_\_ State: \_\_\_\_ Zip Code: \_\_\_\_\_ Phone: \_\_\_\_\_

---

**Trainee Prerequisites**

1. Possesses valid Qualification Card or agency certification card?      \_\_\_Yes \_\_\_No

2. Trainee has current position task book issued by home unit?      \_\_\_Yes \_\_\_No

Current Task Book Progress (Circle)    0%    25%    50%    75%    90%

Priority Open Task in PTB (What do you need to accomplish on this incident?)

---

**Trainer/Evaluator Data**

Trainer / Evaluator Name: \_\_\_\_\_ ICS position on fire: \_\_\_\_\_

Home Unit: \_\_\_\_\_ Agency Designator (Ex CA-RRU): \_\_\_\_\_

Request # (A,C,E,O): \_\_\_\_\_

Work Address: \_\_\_\_\_

City: \_\_\_\_\_ State: \_\_\_\_\_ Zip Code: \_\_\_\_\_

Cell / Contact While on Incident: \_\_\_\_\_



# WIND COMPLEX PUBLIC INFORMATION



**Incident Information Line: 503-823-4083**

Media Line: 916-203-4153

## **MEDIA**

California State Penal Code Section 409.5(d) allows the news media to enter scenes of disaster, riot, or civil disturbance. Properly identified members of the news media should not be restricted from entering the locations specified within the code, even if the area presents a danger to them. Media members should be advised of the nature of possible danger. Members of the media do not have the right to access crime scenes or any area where their presence may interfere with incident operations, mitigation or evidence collection.

- The media may only access private property with the property owner's permission. Fire personnel cannot provide members of the media with authorization to enter private property.
- If approached and questioned by the media and/or the public, talk about your assignment or task at hand. If need be, direct the questioning party to the incident PIO.
- Do not speculate or give opinions
- There is no such thing as an "off the record" comment.

## **CAL FIRE SOCIAL MEDIA POLICY (Social Media 0691)**

Social Media is increasingly being used by public agencies and the media as well as the public. This form of communication continues to grow rapidly in order to supply the public's desire for instant information gratification. All personnel assigned to a CAL FIRE incident will adhere to the CAL FIRE Social Media Policy. Further information about the CAL FIRE Social Media Policy can be obtained from the Information Officer. If you are uncertain, please ask. **Do not post:**

- Inappropriate information, pictures or videos
- Opinions regarding the incident or policy
- Endorsements of any kind

## **PICTURES AND VIDEO OF INCIDENT**

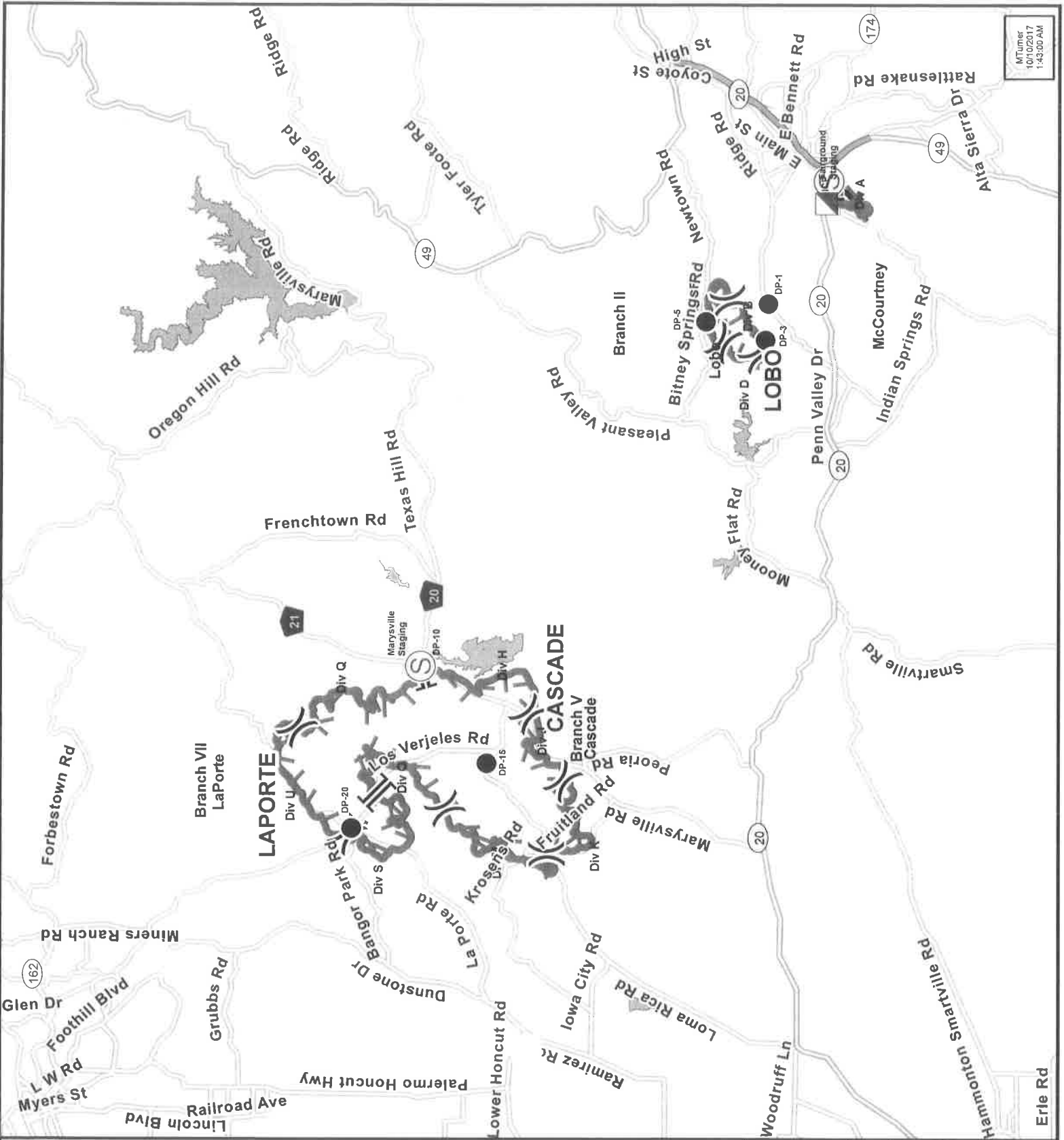
We are in a new era of media. Media no longer means the news/broadcast industry but now refers to anyone that has the capability to shoot video and or photographs and post them onto social media in a matter of minutes. Unfortunately we have seen some instances of video or photographs that have depicted unsafe, unprofessional or embarrassing circumstances which are a serious breach of ethics. When this happens it reflects poorly on all that are attached to this incident. Posting an inappropriate video, photo or blog comment could have unwanted effects. It may be unsafe to shoot photos or video and a firefighter who is concentrating on a camera can't be looking up, down and all around.

## **LOST AND FOUND**

The Information staff will manage *Lost and Found* items for the incident. If you have lost an item, leave your contact information and what you have lost at the Information trailer. If you have found an item on the incident, bring the item to the Information trailer.

## **MAIL SERVICE**

The Information staff will assist you in mailing and receiving letters and packages.



**TRAVEL MAP**  
Wind Complex  
CA-NEU-026295  
10/11/2017

- Division
- Branch
- Drop Point
- Incident Command Post
- Staging Area
- Uncontrolled Fire Edge
- Completed Line
- Water Features
- Invasives
- Highways
- Major Roads
- Ramps

