

*\* Corrected \**

# WIND COMPLEX

CA-NEU-026295

## INCIDENT ACTION PLAN



### OPERATIONAL PERIOD

10/11/2017 - 10/12/2017

0700 - 0700





## INCIDENT OBJECTIVES (ICS 202)

<b>1. Incident Name:</b> <p style="text-align: center;">WIND COMPLEX</p>	<b>2. Operational Period:</b>	Date From: 10/11/2017 Time From: 0700	Date To: 10/12/2017 Time To: 0700
<b>3. Objective(s):</b> <u>Management Objectives:</u> <ul style="list-style-type: none"> <li>-Provide for emergency personnel and public safety at all times.</li> <li>-Protect property, improvements, and infrastructure.</li> <li>-Ensure repopulation takes place in a quick, efficient, and effective manner.</li> <li>-Ensure coordinated, timely and accurate release of public information.</li> <li>-Foster and maintain relationships with all cooperators and stakeholders.</li> <li>-Protect economic, natural, cultural and heritage resources.</li> <li>-Maintain fiscal accountability and keep costs commensurate with values at risk.</li> </ul>			
<u>Control Objectives:</u> <b>Division A - McCourtney Incident:</b> <ul style="list-style-type: none"> <li>-Keep the fire within the established perimeter</li> </ul> <b>Branch II - Lobo Incident:</b> <ul style="list-style-type: none"> <li>-Keep the fire North of Rough and Ready Highway</li> <li>-Keep the fire South of Bitney Springs Road</li> <li>-Keep the fire East of Lake Wildwood Estates</li> <li>-Keep the fire West of the intersection of Bitney Springs Road and Newtown Road</li> </ul> <b>Branch V - Cascade Incident / Branch VII - LaPorte Incident:</b> <ul style="list-style-type: none"> <li>-Keep the fire North of Powerline Right of Way</li> <li>-Keep the fire South of LaPorte Road</li> <li>-Keep the fire East of Dunstone Drive</li> <li>-Keep the fire West of Willow Glen Road and Collins Reservoir</li> </ul>			
<u>General Situational Awareness:</u> Long shifts, draw down of resources, high likelihood for strong winds and new IA starts.			
<b>5. Site Safety Plan Required?</b> Yes <input type="checkbox"/> No <input checked="" type="checkbox"/>			
<b>Approved Site Safety Plan(s) Located at:</b>			
<b>6. Incident Action Plan</b>			
<input checked="" type="checkbox"/> ICS 203	<input checked="" type="checkbox"/> ICS 204	<input type="checkbox"/> WUI Guidelines	<input checked="" type="checkbox"/> Finance Message
<input checked="" type="checkbox"/> Weather Forecast	<input checked="" type="checkbox"/> ICS 220	<input type="checkbox"/> Suppression Repair Plan	<input checked="" type="checkbox"/> PIO Message
<input checked="" type="checkbox"/> Fire Behavior	<input checked="" type="checkbox"/> ICS 206	<input type="checkbox"/> Logistics Message	<input checked="" type="checkbox"/> Transportation Map
<input checked="" type="checkbox"/> Safety Message	<input checked="" type="checkbox"/> ICS 205	<input type="checkbox"/> Demob Plan	<input checked="" type="checkbox"/> Base Camp Map
<input checked="" type="checkbox"/> ICS-215a	<input type="checkbox"/> Firing Ops Checklist	<input checked="" type="checkbox"/> Training Specialist	<input checked="" type="checkbox"/> ICS 214
<b>7. Prepared By:</b> Andy Murphy		Position/Title: PSC	
<b>8. Approved by Incident Commander:</b>		Signature:	
ICS 202			

### ORGANIZATION ASSIGNMENT LIST (ICS 203)

<b>1. Incident Name:</b> WIND COMPLEX		<b>2. Operational Period: Date From:</b> 10/11/2017 Time From: 0700		<b>Date To:</b> 10/12/2017 Time To: 0700	
<b>3. Incident Commander(s) and Command Staff:</b>			<b>7. Operation Section:</b>		
IC/UC's	Glenn Patterson / Dave Allen (T)		Chief	Charlie Blankenheim	
Deputy	Ron Myers		Deputy	Mark Brunton	
Safety Officer	Steve Walker / <i>Chad Thompson (T)</i>		Night Ops	Mike Inman	
Information Officer	Ron Oatman				
Liaison Officer	Mike Martin		<b>Branch</b>		
			Division/Group	A	
			Division/Group		
			Division/Group		
<b>4. Agency/Organization Representatives:</b>			Division/Group		
Agency/Organization	Name		Division/Group		
Yuba County Sheriff	Sgt. Smith		Division/Group		
Butte County Sheriff	Lt. Smith		<b>Branch</b>	II - Lobo	Eric Schwab
Nevada County Sheriff	Capt. Pettitt		Division/Group	B	<i>Jim Smith</i>
Red Cross	Artena Moon		Division/Group	D	Gene Neely
C.H.P.	Lt. Steffenson		Division/Group	F	
PG&E	Rob Cone		Division/Group		
CDCR	Lt. Hill		Division/Group		
Cal OES	<i>Corey Zander</i>		<b>Branch</b>	V - Cascade	Matt Wallen
Nev. County Animal Evac	Bill Alexander		Division/Group	H	Brad Rushing
Cal Trans	Shelly Pangman		Division/Group	J	Clayton Thomas
USFS	Shelly Allen		Division/Group	K	
			Division/Group	M	
			Division/Group	O	Tom Browning
			<b>Branch</b>	VII - La Porte	Garrett Sjolund
<b>5. Planning Section:</b>			Division/Group	Q	Darren Bakken
Chief	Andy Murphy		Division/Group	S	Mike Stewart
Deputy	Jeff Windham		Division/Group	U	Mark Rotlisberger
Resource Unit	Keith Tsudama / Andy Hubbs / Roger Noon		Division/Group		
Situation Unit	Rob Clark / Dan Brown		Division/Group		
Documentation Unit			<b>Branch</b>		
Demobilization Unit	Nick Lawlor		Staging Area	Marysville	
GISS	Fred Postler		Staging Area	Fairground	
FBAN	Todd Hopkins		Division/Group		
IMET			Division/Group		
Training Tech Spec	Claudia Soiza		Division/Group		
			<b>Air Operations Branch</b>	<b>Director:</b>	Rob Sonsteng
<b>6. Logistics Section</b>			Air Support Grp Sup	Greg Bradshaw	
Chief	Ken Lowe / Milford Ferguson		Helibase Manager	Byron Vance	
Supply Unit	Matt Siebecke				
Facilities Unit	Devon Ellsworth / Scott Irvine		<b>8. Finance/Administration Section:</b>		
Ground Support Unit	Tom Stroing		Chief	Bill Winter / Dale Barnett	
Hired Equipment Tech	Jason Marsh		Time Unit	Chuckie Carroll / Andre Schmidt (T)	
Communications Unit	John Aguilera		Procurement Unit	Jason McDermott / Sandra Jewel (T)	
Medical Unit	Matt Lathrop / Justin Vanderhulst		Comp/Claims Unit	Joe Ekblad	
Motel Tech Spec	Paul Pumarejo		Cost Unit	Jennifer Fagen / Michelle Patton (T)	
<b>Prepared By: Name:</b>	Andy Murphy	<b>Position/Title:</b>	PSC	<b>Signature:</b>	<i>[Signature]</i>
<b>ICS 203</b>		<b>Date/Time:</b>	10/10/2017 2300 hours		

**Forecast:**

SPOT FORECAST for Wind Complex...CALFIRE  
National Weather Service SACRAMENTO CA  
231 PM PDT Tue Oct 10 2017

Forecast is based on request time of 0600 PDT on October 11.  
If conditions become unrepresentative...contact the National Weather Service.

**.DISCUSSION...**

Wednesday will see a return of an offshore wind from west becoming northwest by late afternoon. Late evening toward midnight, northeast wind will return, but not as strong as the Sunday to Monday event. Low afternoon humidity will increase in the evening before humidity drops Wednesday night. The fires are in a battle zone area with northwest winds in the valley and northeast wind over the foothills during the overnight and morning hours.

**.WEDNESDAY...**

Sky/weather.....Sunny.  
Max temperature.....73-78.  
Min humidity.....14-18 percent.  
Wind (20 ft).....  
Slope/valley.....West winds 5 to 8 mph. Gusts up to 12 mph in the afternoon.  
Ridgetop.....West 5 to 8 mph gusting 12 mph in the morning.  
Shifting northwest 6 to 10 mph gusting 18 mph by mid afternoon.  
Mixing height.....400 ft AGL increasing to 4100-5900 ft AGL late in the morning.  
Transport winds.....Northwest 5 mph increasing to 10 mph.  
CWR.....0 percent.  
LAL.....1.

**.WEDNESDAY NIGHT...**

Sky/weather.....Clear.  
Min temperature.....50-55.  
Max humidity.....35-40 percent.  
Wind (20 ft).....  
Slope/valley.....North winds 3 to 5 mph. After 2300, northeast 5 to 7 mph gusting to 10 in aligned drainages.  
Ridgetop.....North 5 to 7 mph gusting to 10 mph. After 2200, northeast 7 to 10 mph gusting to 15 mph.  
Mixing height.....4800 ft AGL decreasing to 100-400 ft AGL early in the evening.  
Transport winds.....North 5 mph becoming northeast 5 to 7 mph.  
CWR.....0 percent.  
LAL.....1.

\$\$

Forecaster...JClapp

## FIRE BEHAVIOR FORECAST

FORECAST NUMBER: 002	TYPE OF FIRE: Wildfire
FIRE NAME: Wind Complex	OPERATIONAL PERIOD: 10/11/2017 0700-0700
DATE ISSUED: October 10, 2017	TIME ISSUED: 2300
UNIT: CA-NEU-026295	SIGNED: <i>Todd Hopkins</i> Typed/printed: Todd Hopkins (FBAN)

### INPUTS

WEATHER SUMMARY: See Attached Spot Weather Forecast  
**\*\*\* RED FLAG WARNING WEDNESDAY EVENING – NORTH WINDS & POOR RH RECOVERY \*\*\***  
 EXPECT WIND SHIFT AROUND 0900

WEATHER: Day: Sunny                      Night: Clear

TEMPERATURES / HUMIDITY: Day: 73-78 F Max Temperature / Min Humidity: 14%-18%  
 Night: Min Temperature 50-55 F / Max Humidity: 33%-40%

20 FT WINDS: Day: Slope/Valley: West 5-8 mph, Gust 12 mph in the afternoon  
 Ridgetop: West 5-8 mph, Gust 12 mph in the morning, becoming northwest 6-10 mph,  
 Gust 18 mph in afternoon.

Night: Slope/Valley: North 3-5 mph early evening. After 2300 northeast 5-7 mph Gust 10 mph  
 Ridgetop: North 5-7 mph, Gust 10 mph. After 2200 northeast 7-10 mph, Gust 15 mph

### OUTPUTS

#### FIRE BEHAVIOR

GENERAL: The fires are burning in a mix of grass and brush with stands of timber and timber litter that are extremely dry and have a heavy fuel loading. The initial fire spread was driven by high winds and low humidity with long range spotting. With the predicted northwest wind, single or group tree or tall brush torching could cast embers and produce spot fires in receptive fuel beds, especially where timber litter fuel loading or heavy grass crops are high. Wind speeds are expected to increase with strong gust which will lead to increased rates of spread and the possibility of long range spotting.

Probability of Ignition: 86%  
 100 HRFM: 90<sup>th</sup> Percentile

FDFM: 3%  
 LAL: 1

ERC: 68 (77 90<sup>th</sup> Percentile)  
 1000 HRFM: Near 90<sup>th</sup> Percentile

#### SPECIFIC:

		<i>Rate of Spread (ft/min)</i>		<i>Flame Length (in feet)</i>		<i>Spotting Distance (in miles)</i>
Grass	Head	56-223	Head	8-19	1/3 – 1/2	
	Flank	4-19	Flank	3-6		
	Backing	2-10	Backing	2-4		
Brush	Head	82-180	Head	19-31	1/3 – 3/4	
	Flank	7-15	Flank	6-10		
	Backing	3-8	Backing	4-7		
Timber Litter	Head	11-20	Head	2-8	1/4 – 1/3	
	Flank	1-2	Flank	1-3		
	Backing	Less than 1	Backing	1-2		

#### AIR OPERATIONS:

Strong north winds may lay the smoke down making visibility difficult for air resources  
 Sunrise: 0710 Sunset: 1831

### SAFETY

- Expect rapid fire growth in light flashy fuels.
- Exceptionally dry fuels warrant a high degree of caution.
- Winds will shift to northwest winds around 0900
- Don't become complacent! Identify your safety zones and escape routes.



WIND COMPLEX SAFETY MESSAGE

**Maintain Situational Awareness**

INCIDENT: Wind Complex CA-NEU-026295      DATE: October 11, 2017      TIME: 0700-0700

**Major Hazards and Risks: Extreme fire behavior, Windy dry weather, Limited resources.**

**Fatigue:** Dry windy weather for the next several days, be alert for signs of fatigue and take breaks as necessary. Be alert for signs of fatigue in yourself and others.

**Fire Behavior:** Fuels are receptive to fire spread. A small amount of wind on this dry fuel changes fire behavior dramatically!! Be alert to changes in wind direction and expect changes in fire behavior. Watch for spot fires outside the control lines.

**Downed powerlines:** Follow power line safety guidelines (IRPG pg.24), watch out for burned out power poles.

**Personnel:** Manage yourself and those around you for fatigue. Drink fluids frequently and eat nutritious food regularly. As fatigue increases, injuries tend to increase also. Keep an eye on your crew and partner. Stay engaged and make smart decisions.

**Hazard trees:** Survey your work areas for hazard trees, flag and restrict access, use only qualified personnel for tree felling. Dead trees from bug kill. Review and follow **Hazard Tree Safety**, pg. 22-23 in your IRPG.

**Steep slopes/rolling material:** Watch your footing while hiking in steep terrain. Be careful of loose rolling debris. Maintain Situational Awareness.

**Driving:** Slow Down! Drive defensively. Expect the unexpected around every curve. Drive with headlights and seatbelts on. Coordinate your movements on one-lane roads.

**Review your ICS 206 and know what to do in the event of an (IWI).**

**L**ookouts, **C**ommunication, **E**scape routes, **S**afety zones

**Tailgate Safety**

- **Accountability:** everyone checks in and everyone checks out. Supervisors know where their crews are at all times
- **Communication:** everyone knows the com-plan
- **Briefing:** everyone knows the plan and the contingency plan
- **Safety gear:** everyone has the appropriate safety gear in good working condition
- **LCES:** they are clear and made known to everyone

**Fatigue Management:**

- Drink plenty of fluids:
  - Water and Gatorade
- Avoid drinking energy drinks
- Rest when you can
- Find shade when you can
- Eat nutritious food regularly
- Work within your abilities.

Incident Safety Officer: Chad Thompson

Incident Commander: Glenn Patterson



## WIND COMPLEX INCIDENT RISK ANALYSIS (ICS 215a)

DIV	HAZARDOUS ACTIONS/CONDITIONS	MITIGATIONS / WARNINGS / REMEDIES
ALL	<b>FATIGUE</b>	Be alert for signs of fatigue and take breaks as necessary. Monitor incoming resources for level of fatigue. Drink water before, during and after shifts, up to 1.5 gal. per shift. Rest when you can. Be alert for signs of heat stress in yourself and others; use the buddy system. Eat small meals often and when possible Drink electrolyte drinks at a 3 water to 1 sport drink ratio.
ALL	<b>FIRE BEHAVIOR</b>	Review "Severe Fire Behavior Potential" (IRPG p.68). Monitor current weather conditions and forecasts. Make sure all personnel receive thorough briefings every shift. Be observant for wind shifts. Maintain adequate escape routes and safety zones. Advise all personnel if these are compromised or changed. Set trigger points when appropriate. Adhere to 10 Standard Orders, mitigate 18 situations, Maintain Situational Awareness.
ALL	<b>COMMUNICATIONS</b>	Monitor for changes in the communications plan. Review ICS 205 in your IAP. Monitor command, tactical, and air to ground frequencies.
ALL	<b>STEEP TERRAIN / ROLLING DEBRIS</b>	Watch your footing while hiking in steep terrain. Be careful of loose rolling debris Maintain Situational Awareness.
ALL	<b>HAZARD TREES</b>	Identify and Isolate the area to provide for the safety of others. Flag and make proper notifications. Many pockets of dead trees. Do Not Fall trees out of your certification level.
ALL	<b>LINE CONSTRUCTION</b>	Conduct thorough briefing for all personnel (inside rear cover IRPG). Ensure LCES in place prior to engagement (IRPG p. 7). Establish adequate safety zones (IRPG p.8). Use Downhill Line Checklist (IRPG p. 9). Follow "Look Up, Look Down, Look Around" procedures (IRPG p. 3-4). Utilize Risk Management Process (IRPG p.1).
ALL	<b>DRIVING HAZARDS</b>	Slow Down! Drive defensively! Expect the unexpected around every curve. Drive with headlights and seatbelts on. Narrow dirt roads with limited passing room, coordinate your movements. Civilians are still in the Evacuation Order areas. Use warning devices when operating near traffic.
ALL	<b>AIRCRAFT OPERATIONS</b>	Monitor air-to-ground frequency, they are your eyes in the sky. Use air-to-ground frequency to communicate with aircraft. Use clear, concise statements when directing aircraft.
ALL	<b>DOZER SAFETY</b>	Watch for rolling material. Monitor safe working distances. Avoid working below Dozers. Utilize communication with the operator (radio or hand signals)
ALL	<b>POWER LINES</b>	Follow <i>Power Line Safety</i> guidelines (IRPG pg.24.) Communicate power line hazards to immediate supervisor and hazard flag accordingly. Flag area around downed power lines and deny access. Treat all downed power lines as energized.
ALL	<b>STRUCTURE DEFENSE &amp; HAZARDS</b>	Conduct thorough briefing for all personnel (inside rear cover IRPG). Follow <i>Wildland Urban Interface Guidelines</i> (IRPG p. 12-16).
ALL	<b>MARIJUANA GROW OPERATIONS</b>	Use extreme caution on grow sites. Do not enter. Hazardous chemicals associated with growing operation.
Incident Name: Wind Complex CA-NEU-026295 ICS 215a		DATE PREPARED: October 10, 2017 1800hrs Prepared by: Chad Thompson, Team 2 SOF(T)
		OPERATIONAL PERIOD October 11, 2017 0700-0700




### ASSIGNMENT LIST (ICS 204)

<b>1. Incident Name:</b> WIND COMPLEX		<b>2. Operational Period:</b> Date From: 10/11/17     Date To: 10/12/17 Time From: 0700     Time To: 0700			<b>3.</b>  Branch:  Div/Group: <b>A</b>  <b>Alpha</b>		
<b>4. Operations Personnel:</b> Operations Section Chief: <b>Charlie Blankenheim</b> Night Ops: <b>Mike Inman</b> Branch Director: Division/Group Supervisor: <i>Leader from T/F Wind #1 : Josh Sunde</i>							
<b>5. Resources Assigned:</b>		<b>** Resources Below in Bold are 12 Hour **</b>			Reporting Location, Special Equipment, Remarks, Notes, and Information Time                      Location		
Resource Identifier	ALS	Leader	Personnel	Request #			
T/F WIND #1		<i>Sunde, Josh</i>		*	0700-0700	ICP	
ENG OPH 52				*	0700-0700	ICP	
ENG1 NCC 84				*	0700-0700	ICP	
ENG1 NCC 84B				*	0700-0700	ICP	
<del>ENG OPH 5269</del> <i>Part of T/F</i> 4107				*	0700-0700	ICP	
ENG NEV 5464				*	0700-0700	ICP	
W/T NCC 88				*	0700-0700	ICP	
W/T PVT E-139 VEST		Vest, Scott	2	E-139	0700-0700	ICP	
W/T PVT E-143 REDWARDS		Edwards, Rob	<i>X</i> 2	E-143	0700-0700	ICP	
<i>FALM 0-242</i>							
<b>6. Work Assignments:</b> Continue to build and improve lines Mop up and patrol Conduct damage assessment							
<b>7. Special Instructions:</b> <i>* ALL Resources that are Italicized MUST report to Check-In to receive their new Request #'s *</i>							
<b>8. Communications</b> (radio and/or phone contact numbers needed for this assignment):							
Name	Ch	Function	Rx Freq	Rx Tone	Tx Freq	Tx Tone	Notes
CDF C2	1, 2, 3	COMMAND	151.2850	103.5 (T8)	159.3300	SEE ICS 205	Tone 9, Tone 11, Tone 16
CDF T1	4	TACTICAL	151.2575	192.8 (T16)	151.2575	192.8 (T16)	
CALCORD	13	MEDICAL	156.0750	156.7 (T6)	156.0750	156.7 (T6)	
SEE ICS 205	14, 15	AIR TO GROUND					CDF T15, CDF T22
GUARD	16	EMERGENCY	168.6250	0.0	168.6250	110.9 (T1)	
<b>9. Prepared by: Name:</b> Keith Tsudama                      Pos/Title: RESL                      Signature:							
ICS 204		Date/Time: 10/10/2017 2300 hours					

### ASSIGNMENT LIST (ICS 204)

<b>1. Incident Name:</b> WIND COMPLEX		<b>2. Operational Period:</b> Date From: 10/11/17    Date To: 10/12/17 Time From: 0700    Time To: 0700				<b>3.</b>  Branch: <b>II - Lobo</b>  Div/Group: <b>B</b> <b>Bravo</b>	
<b>4. Operations Personnel:</b> Operations Section Chief: <b>Charlie Blankenheim</b> Night Ops: <b>Mike Inman</b> Branch Director: <b>Eric Schwab</b> Branch Safety: <b>Steve Walker</b> Division/Group Supervisor: <i>Jim Smith</i> (12-Hour)							
<b>5. Resources Assigned:</b>		<b>** Resources Below in Bold are 12 Hour **</b>				Reporting Location, Special Equipment, Remarks, Notes, and Information Time                      Location	
Resource Identifier	ALS	Leader	Personnel	Request #			
STC XTB 4234C		Osburn, Kenneth	22	E-212	0700-0700	DP 1	
ENG NEU 2351		Marshall, Travis J	3	E-217	0700-0700	DP 1	
ENG NEU 2361		Wilson, Richard	3	E-225	0700-0700	DP 1	
ENG NEU 2372		Romero, Rueben	3	E-228	0700-0700	DP 1	
<del>ENG 204</del> Part of 3300C				*	0700-0700	DP 1	
<del>ENG 319</del> " "				*	0700-0700	DP 1	
ENG RAR 5960				*	0700-0700	DP 1	
ENG 6461				*	0700-0700	DP 1	
WIT PNV 43		Bertolucci, Dennis	1	E-59	0700-0700	DP 1	
WIT PVT E-19 GOMES		Klar, Randy	2	E-19*	0700-0700	DP 1	
FEMP GREGORY O-178	ALS	Gregory, Christopher M	1	O-178	0700-0700	DP 1	
FEMT DEMERS O-167		Demers, Corey Allen	1	O-167	0700-0700	DP 1	
STC 4063C (new arrival)							
<b>6. Work Assignments:</b> Continue to build and improve lines Conduct damage assessment							
<b>7. Special Instructions:</b> * ALL Resources that are <i>Italicized</i> MUST report to Check-In to receive their new Request #'s * FEMP GREGORY / FEMT DEMERS shared throughout Branch II							
<b>8. Communications</b> (radio and/or phone contact numbers needed for this assignment):							
Name	Ch	Function	Rx Freq	Rx Tone	Tx Freq	Tx Tone	Notes
CDF C2	1, 2, 3	COMMAND	151.2650	103.5 (T8)	159.3300	SEE ICS 205	Tone 9, Tone 11, Tone 16
CDF T24	5	TACTICAL	151.3175	192.8 (T16)	151.3175	192.8 (T16)	
CALCORD	13	MEDICAL	156.0750	156.7 (T6)	156.0750	156.7 (T6)	
SEE ICS 205	14, 15	AIR TO GROUND					CDF T16, CDF T22
GUARD	16	EMERGENCY	168.6250	0.0	168.6250	110.9 (T1)	
<b>9. Prepared by: Name:</b> Keith Tsudama		Pos/Title: RESL		Signature: <i>[Signature]</i>			
ICS 204		Date/Time: 10/10/2017 2300 hours					

### ASSIGNMENT LIST (ICS 204)

<b>1. Incident Name:</b> WIND COMPLEX			<b>2. Operational Period:</b> Date From: 10/11/17      Date To: 10/12/17 Time From: 0700      Time To: 0700			<b>3.</b>  Branch: <b>II - Lobo</b>  Div/Group: <b>D</b>  <b>Delta</b>		
<b>4. Operations Personnel:</b> Operations Section Chief: <b>Charlie Blankenheim</b> Night Ops: <b>Mike Inman</b> Branch Director: <b>Erlc Schwab</b> Branch Safety: <b>Steve Walker (12-Hour)</b> Division/Group Supervisor: <b>Gene Neely</b>								
<b>5. Resources Assigned:</b>			<b>** Resources Below in Bold are 12 Hour **</b>					Reporting Location, Special Equipment, Remarks, Notes, and Information Time      Location
Resource Identifier	ALS	Leader	Personnel	Request #				
STC XSJ 4184C		Neely, Gene	17	E-211		0700-0700	DP 1	
STC XYU 3300C		Heggstroms, Kyle	17	*		0700-0700	DP 1	
STG				*		0700-0700	DP 1	
<b>AMERICAN RIVER IHC</b>						<b>0700-1900</b>	<b>DP 1</b>	
W/T PVT E-144 ALL AGENCY		Doug Hill	<b>X 2</b>	E-144		0700-0700	DP 1	
W/T PVT E-149 RODGERS		Rodgers, Buddy	<b>2</b>	E-149		0700-0700	DP 1	
FALM MODULE O-240		Module, Faller, 2 Faller	1	O-240		0700-0700	DP 1	
FOBS						0700-0700	DP 1	
FOBS						0700-0700	DP 1	
<b>6. Work Assignments:</b> Continue to build and improve lines Conduct damage assessment								
<b>7. Special Instructions:</b> <i>* ALL Resources that are Italicized MUST report to Check-In to receive their new Request #'s *</i> FEMP GREGORY / FEMT DEMERS shared throughout Branch II								
<b>8. Communications</b> (radio and/or phone contact numbers needed for this assignment):								
Name	Ch	Function	Rx Freq	Rx Tone	Tx Freq	Tx Tone	Notes	
CDF C2	1, 2, 3	COMMAND	151.2650	103.5 (T8)	159.3300	SEE ICS 205	Tone 9, Tone 11, Tone 16	
CDF T24	5	TACTICAL	151.3175	192.8 (T16)	151.3175	192.8 (T16)		
CALCORD	13	MEDICAL	156.0750	156.7 (T6)	156.0750	156.7 (T6)		
SEE ICS 205	14, 15	AIR TO GROUND					CDF T15, CDF T22	
GUARD	16	EMERGENCY	168.6250	0.0	168.6250	110.9 (T1)		
<b>9. Prepared by: Name:</b> Keith Tsudama			<b>Pos/Title:</b> RESL		<b>Signature:</b> 			
<b>ICS 204</b>		<b>Date/Time:</b> 10/10/2017 2300 hours						



## ASSIGNMENT LIST (ICS 204)

<b>1. Incident Name:</b> WIND COMPLEX		<b>2. Operational Period:</b> Date From: 10/11/17    Date To: 10/12/17 Time From: 0700    Time To: 0700			<b>3.</b>  Branch: <b>V - Cascade</b>  Div/Group: <b>H</b>  <b>Hotel</b>		
<b>4. Operations Personnel:</b> Operations Section Chief: <b>Charlie Blankenheim</b> Night Ops: <b>Mike Inman</b> Branch Director: <b>Matt Wallen</b> Branch Safety: <del>Clinton Hamilton</del> <b>Ryan Danielson</b> Division/Group Supervisor: <b>Brad Rushing</b>							
<b>5. Resources Assigned:</b>		<b>** Resources Below in Bold are 12 Hour **</b>			Reporting Location, Special Equipment, Remarks, Notes, and Information Time                      Location		
Resource Identifier	ALS	Leader	Personnel	Request #			
ENG NEU 2365			4	E-162	0700-0700	DP 15	
ENG NEU 2371		Harcourt, Wesley	3	E-58	0700-0700	DP 15	
ENG NEU 2381			3	E-164	0700-0700	DP 15	
<b>ENG MDF 45</b>				<b>E-55*</b>	<b>0700-1900</b>	<b>DP 15</b>	
<b>ENG PNF 332</b>		<b>Wells, Jennifer</b>	<b>3</b>	<b>*</b>	<b>0700-1900</b>	<b>DP 15</b>	
STG					0700-0700	DP 15	
<del>TALLAGHC</del> <i>To DIV C</i>				<b>*</b>	<b>0700-1900</b>	<b>DP 15</b>	
DOZ PVT E-30 SILLER			2	E-30*	0700-0700	DP 15	
DOZ PVT E-251 ROBINSON		Robinson, Tim	2	E-251	0700-0700	DP 15	
W/T PVT E-136 JACKSON WATER		Anderson, Sandra	2	E-136	0700-0700	DP 15	
W/T PVT E-140 COTTONWOOD			2	E-140	0700-0700	DP 15	
FEMT GARCIA O-171		Garcia, Robert A	1	O-171	0700-0700	DP 15	
FEMT GARCIA O-172		Garcia, Robert J	1	O-172	0700-0700	DP 15	
<i>STA 4823A (were unassigned)</i>							
<b>6. Work Assignments:</b> Continue to build and improve lines Conduct damage assessment							
<b>7. Special Instructions:</b> <i>* ALL Resources that are Italicized MUST report to Check-In to receive their new Request #'s *</i> FEMT GARCIA's shared throughout Branch V							
<b>8. Communications</b> (radio and/or phone contact numbers needed for this assignment):							
Name	Ch	Function	Rx Freq	Rx Tone	Tx Freq	Tx Tone	Notes
CDF C2	1, 2, 3	COMMAND	151.2650	103.5 (T8)	159.3300	SEE ICS 205	Tone 9, Tone 11, Tone 16
VFIRE 24	7	TACTICAL	154.2725	156.7 (T6)	154.2725	156.7(T6)	
CALCORD	13	MEDICAL	156.0750	156.7 (T6)	156.0750	156.7 (T6)	
SEE ICS 205	14, 15	AIR TO GROUND					CDF T15, CDF T22
GUARD	16	EMERGENCY	168.6250	0.0	168.6250	110.9 (T1)	
<b>9. Prepared by: Name:</b> Keith Tsudama                      Pos/Title: RESL                      Signature:							
<b>ICS 204</b>		Date/Time: 10/10/2017 2300 hours					

### ASSIGNMENT LIST (ICS 204)

<b>1. Incident Name:</b> WIND COMPLEX		<b>2. Operational Period:</b> Date From: 10/11/17      Date To: 10/12/17 Time From: 0700      Time To: 0700			<b>3.</b>  Branch: <b>V - Cascade</b>  Div/Group: <b>J</b>  <b>Juliet</b>																																																																																																																														
<b>4. Operations Personnel:</b> Operations Section Chief: <b>Charlie Blankenheim</b> Night Ops: <b>Mike Inman</b> Branch Director: <b>Matt Wallen</b> Branch Safety: <b>Clinton Hamilton Ryan Denison</b> Division/Group Supervisor: <b>Clayton Thomas James Bierwagen</b>																																																																																																																																			
<b>5. Resources Assigned:</b> <b>** Resources Below in Bold are 12 Hour **</b> <table border="1" style="width: 100%; border-collapse: collapse; font-size: small;"> <thead> <tr> <th style="width: 30%;">Resource Identifier</th> <th style="width: 5%;">ALS</th> <th style="width: 25%;">Leader</th> <th style="width: 10%;">Personnel</th> <th style="width: 10%;">Request #</th> <th style="width: 10%;">Reporting Location, Special Equipment, Remarks, Notes, and Information Time</th> <th style="width: 10%;">Location</th> </tr> </thead> <tbody> <tr> <td><i>T/F XNE 4107</i></td> <td></td> <td><b>Bierwagen, James</b></td> <td></td> <td style="text-align: center;">*</td> <td>0700-0700</td> <td>DP 15</td> </tr> <tr> <td><b>ENG TMU 341</b></td> <td></td> <td><b>King, Ted</b></td> <td></td> <td style="text-align: center;"><b>E-53*</b></td> <td><b>0700-1900</b></td> <td><b>DP 15</b></td> </tr> <tr> <td><b>ENG ENF 33</b></td> <td></td> <td><b>Duffie, Ben</b></td> <td></td> <td style="text-align: center;">*</td> <td><b>0700-1900</b></td> <td><b>DP 15</b></td> </tr> <tr> <td>STG</td> <td></td> <td></td> <td></td> <td></td> <td>0700-0700</td> <td>DP 15</td> </tr> <tr> <td><del>DOZ PVT E-28 Ridge To DIV Q</del></td> <td></td> <td></td> <td></td> <td style="text-align: center;"><b>E-28*</b></td> <td><b>0700-1900</b></td> <td><b>DP 15</b></td> </tr> <tr> <td><del>DOZ PVT E-29 Ridge To DIV Q</del></td> <td></td> <td></td> <td></td> <td style="text-align: center;"><b>E-29*</b></td> <td><b>0700-1900</b></td> <td><b>DP 15</b></td> </tr> <tr> <td>W/T PVT E-36 Norm Paul</td> <td></td> <td>Meyer, Ken</td> <td style="text-align: center;">2</td> <td style="text-align: center;"><b>E-36*</b></td> <td>0700-0700</td> <td>DP 15</td> </tr> <tr> <td>W/T PVT E-142 PJ AND R</td> <td></td> <td></td> <td style="text-align: center;">2</td> <td style="text-align: center;">E-142</td> <td>0700-0700</td> <td>DP 15</td> </tr> <tr><td> </td><td></td><td></td><td></td><td></td><td></td><td></td></tr> <tr><td> </td><td></td><td></td><td></td><td></td><td></td><td></td></tr> <tr><td> </td><td></td><td></td><td></td><td></td><td></td><td></td></tr> <tr><td> </td><td></td><td></td><td></td><td></td><td></td><td></td></tr> <tr><td> </td><td></td><td></td><td></td><td></td><td></td><td></td></tr> <tr><td> </td><td></td><td></td><td></td><td></td><td></td><td></td></tr> <tr><td> </td><td></td><td></td><td></td><td></td><td></td><td></td></tr> <tr><td> </td><td></td><td></td><td></td><td></td><td></td><td></td></tr> <tr><td> </td><td></td><td></td><td></td><td></td><td></td><td></td></tr> </tbody> </table>						Resource Identifier	ALS	Leader	Personnel	Request #	Reporting Location, Special Equipment, Remarks, Notes, and Information Time	Location	<i>T/F XNE 4107</i>		<b>Bierwagen, James</b>		*	0700-0700	DP 15	<b>ENG TMU 341</b>		<b>King, Ted</b>		<b>E-53*</b>	<b>0700-1900</b>	<b>DP 15</b>	<b>ENG ENF 33</b>		<b>Duffie, Ben</b>		*	<b>0700-1900</b>	<b>DP 15</b>	STG					0700-0700	DP 15	<del>DOZ PVT E-28 Ridge To DIV Q</del>				<b>E-28*</b>	<b>0700-1900</b>	<b>DP 15</b>	<del>DOZ PVT E-29 Ridge To DIV Q</del>				<b>E-29*</b>	<b>0700-1900</b>	<b>DP 15</b>	W/T PVT E-36 Norm Paul		Meyer, Ken	2	<b>E-36*</b>	0700-0700	DP 15	W/T PVT E-142 PJ AND R			2	E-142	0700-0700	DP 15																																																															
Resource Identifier	ALS	Leader	Personnel	Request #	Reporting Location, Special Equipment, Remarks, Notes, and Information Time	Location																																																																																																																													
<i>T/F XNE 4107</i>		<b>Bierwagen, James</b>		*	0700-0700	DP 15																																																																																																																													
<b>ENG TMU 341</b>		<b>King, Ted</b>		<b>E-53*</b>	<b>0700-1900</b>	<b>DP 15</b>																																																																																																																													
<b>ENG ENF 33</b>		<b>Duffie, Ben</b>		*	<b>0700-1900</b>	<b>DP 15</b>																																																																																																																													
STG					0700-0700	DP 15																																																																																																																													
<del>DOZ PVT E-28 Ridge To DIV Q</del>				<b>E-28*</b>	<b>0700-1900</b>	<b>DP 15</b>																																																																																																																													
<del>DOZ PVT E-29 Ridge To DIV Q</del>				<b>E-29*</b>	<b>0700-1900</b>	<b>DP 15</b>																																																																																																																													
W/T PVT E-36 Norm Paul		Meyer, Ken	2	<b>E-36*</b>	0700-0700	DP 15																																																																																																																													
W/T PVT E-142 PJ AND R			2	E-142	0700-0700	DP 15																																																																																																																													
<b>6. Work Assignments:</b> Continue to build and improve lines Conduct damage assessment																																																																																																																																			
<b>7. Special Instructions:</b> * ALL Resources that are <i>Italicized</i> <b>MUST</b> report to Check-In to receive their new Request #'s * FEMT GARCIA's shared throughout Branch V																																																																																																																																			
<b>8. Communications</b> (radio and/or phone contact numbers needed for this assignment): <table border="1" style="width: 100%; border-collapse: collapse; font-size: small;"> <thead> <tr> <th>Name</th> <th>Ch</th> <th>Function</th> <th>Rx Freq</th> <th>Rx Tone</th> <th>Tx Freq</th> <th>Tx Tone</th> <th>Notes</th> </tr> </thead> <tbody> <tr> <td>CDF C2</td> <td>1, 2, 3</td> <td>COMMAND</td> <td>151.2650</td> <td>103.5 (T8)</td> <td>159.3300</td> <td>SEE ICS 205</td> <td>Tone 9, Tone 11, Tone 16</td> </tr> <tr> <td>VFIRE 24</td> <td>7</td> <td>TACTICAL</td> <td>154.2725</td> <td>156.7 (T6)</td> <td>154.2725</td> <td>156.7 (T6)</td> <td></td> </tr> <tr> <td>CALCORD</td> <td>13</td> <td>MEDICAL</td> <td>156.0750</td> <td>156.7 (T6)</td> <td>156.0750</td> <td>156.7 (T6)</td> <td></td> </tr> <tr> <td>SEE ICS 205</td> <td>14, 15</td> <td>AIR TO GROUND</td> <td></td> <td></td> <td></td> <td></td> <td>CDF T15, CDF T22</td> </tr> <tr> <td>GUARD</td> <td>16</td> <td>EMERGENCY</td> <td>168.6250</td> <td>0.0</td> <td>168.6250</td> <td>110.9 (T1)</td> <td></td> </tr> </tbody> </table>						Name	Ch	Function	Rx Freq	Rx Tone	Tx Freq	Tx Tone	Notes	CDF C2	1, 2, 3	COMMAND	151.2650	103.5 (T8)	159.3300	SEE ICS 205	Tone 9, Tone 11, Tone 16	VFIRE 24	7	TACTICAL	154.2725	156.7 (T6)	154.2725	156.7 (T6)		CALCORD	13	MEDICAL	156.0750	156.7 (T6)	156.0750	156.7 (T6)		SEE ICS 205	14, 15	AIR TO GROUND					CDF T15, CDF T22	GUARD	16	EMERGENCY	168.6250	0.0	168.6250	110.9 (T1)																																																																															
Name	Ch	Function	Rx Freq	Rx Tone	Tx Freq	Tx Tone	Notes																																																																																																																												
CDF C2	1, 2, 3	COMMAND	151.2650	103.5 (T8)	159.3300	SEE ICS 205	Tone 9, Tone 11, Tone 16																																																																																																																												
VFIRE 24	7	TACTICAL	154.2725	156.7 (T6)	154.2725	156.7 (T6)																																																																																																																													
CALCORD	13	MEDICAL	156.0750	156.7 (T6)	156.0750	156.7 (T6)																																																																																																																													
SEE ICS 205	14, 15	AIR TO GROUND					CDF T15, CDF T22																																																																																																																												
GUARD	16	EMERGENCY	168.6250	0.0	168.6250	110.9 (T1)																																																																																																																													
<b>9. Prepared by: Name:</b> Keith Tsudama      Pos/Title: RESL Date/Time: 10/10/2017 2300 hours      Signature: <i>[Signature]</i> ICS 204																																																																																																																																			







## ASSIGNMENT LIST (ICS 204)

<b>1. Incident Name:</b> WIND COMPLEX		<b>2. Operational Period:</b> Date From: 10/11/17    Date To: 10/12/17 Time From: 0700    Time To: 0700				<b>3.</b>  Branch: <b>V - Cascade</b>  Div/Group: <b>O</b>  <b>Oscar</b>	
<b>4. Operations Personnel:</b> Operations Section Chief: <b>Charlie Blankenheim</b> Night Ops: <b>Mike Inman</b> Branch Director: <b>Matt Wallen</b> Branch Safety: <b>Clinton Hamilton</b> Division/Group Supervisor: <b>Tom Browning</b> <i>Ryan Daalson</i>							
<b>5. Resources Assigned:</b>		<b>** Resources Below in Bold are 12 Hour **</b>				Reporting Location, Special Equipment, Remarks, Notes, and Information Time                      Location	
Resource Identifier	ALS	Leader	Personnel	Request #			
ENG NEU 2352		<i>Yurek, Brandon</i>		<i>E-1*</i>	0700-0700	DP 15	
ENG NEU 2363		Hancock, Corey	4	E-219	0700-0700	DP 15	
ENG NEU 2364		<i>Chizek, Mickey</i>		*	0700-0700	DP 15	
ENG NEU 2383		Mckeown, Kevin	3	E-226	0700-0700	DP 15	
ENG1 GRS 2				*	0700-0700	DP 15	
<del>ENG 10</del> <i>part of 3300 C</i>				*	0700-0700	DP 15	
<del>ENG 302</del> " "				*	0700-0700	DP 15	
STG					0700-0700	DP 15	
W/T PVT E-155 H2O TO GO		Wright, Junior	<i>X2</i>	E-155	0700-0700	DP 15	
W/T PVT E-156 LAWLOR WATER		Lawlor, Patty	2	E-166	0700-0700	DP 15	
<i>Tallac IHC from H</i>							
<b>6. Work Assignments:</b> Continue to build and improve lines Conduct damage assessment							
<b>7. Special Instructions:</b> <i>* ALL Resources that are Italicized MUST report to Check-In to receive their new Request #'s *</i> FEMT GARCIA's shared throughout Branch V							
<b>8. Communications</b> (radio and/or phone contact numbers needed for this assignment):							
Name	Ch	Function	Rx Freq	Rx Tone	Tx Freq	Tx Tone	Notes
GDF C2	1, 2, 3	COMMAND	151.2650	103.5 (T8)	159.3300	SEE ICS 205	Tone 9, Tone 11, Tone 16
VFIRE 26	9	TACTICAL	154.3025	156.7 (T6)	154.3025	156.7 (T6)	
CALCORD	13	MEDICAL	156.0750	156.7 (T6)	156.0750	156.7 (T6)	
SEE ICS 205	14, 15	AIR TO GROUND					GDF T15, CDF T22
GUARD	16	EMERGENCY	168.6250	0.0	168.6250	110.9 (T1)	
<b>9. Prepared by: Name:</b> Keith Tsudama		<b>Pos/Title:</b> RESL		<b>Signature:</b> <i>[Signature]</i>			
ICS 204		<b>Date/Time:</b> 10/10/2017 2300 hours					

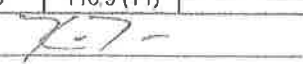
## ASSIGNMENT LIST (ICS 204)

<b>1. Incident Name:</b> WIND COMPLEX		<b>2. Operational Period:</b> Date From: 10/11/17      Date To: 10/12/17 Time From: 0700      Time To: 0700				<b>3.</b>  Branch: <b>VII - La Porte</b>  Div/Group: <b>Q</b>  <b>Quebec</b> Page 1 of 2	
<b>4. Operations Personnel:</b> Operations Section Chief: <b>Charlie Blankenheim</b> Night Ops: <b>Mike Inman</b> Branch Director: <b>Garrett Sjolund</b> Branch Safety: <del>Clinton</del> <sup>Ryan</sup> Division/Group Supervisor: <b>Darren Bakken / Randy Northrup (T)</b> Hamilton <sup>Demelisen</sup>							
<b>5. Resources Assigned:</b> <b>** Resources Below in Bold are 12 Hour **</b>							
Resource Identifier	ALS	Leader	Personnel	Request #	Reporting Location, Special Equipment, Remarks, Notes, and Information	Time      Location	
STA XED 4076A		Lohan, Paul	19	E-182	0700-0700	DP 20	
STA XPL 4130A	ALS	Midtling, Brian		E-181	0700-0700	DP 20	
STC SHU 9240C		Whitehurst, Timothy R	18	E-209	0700-0700	DP 20	
STC XCA 4062C		Konklin, Craig S	16	E-254	0700-0700	DP 20	
STG NEU 9235G				*	0700-0700	DP 20	
STG AEU 9273G		<i>Loveless, Jeff</i>	27	*	0700-0700	DP 20	
CRW AEU GRB 5				*	0700-0700	DP 20	
STG					0700-0700	DP 20	
STG					0700-0700	DP 20	
DOZ PVT E-9 EMERSON		<i>Emerson, Mel</i>	2	E-9*	0700-0700	DP 20	
DOZ PVT E-26 LESTER			2	E-26*	0700-0700	DP 20	
DOZ PVT E-27 GRAHAM		<i>Clayton, Graham</i>	2	E-27*	0700-0700	DP 20	
DOZ PNF 3		<i>Lamb, Derek</i>	2	E-12*	0700-0700	DP 20	
WT PVT E-38 NORM PAUL		<i>Sasser, Scott</i>	2	E-38*	0700-0700	DP 20	
WT PVT E-127 ALGERINE		<i>Carne, Jim</i>	2	E-127	0700-0700	DP 20	
WT PVT E-130 HARRIS		<i>Zurbier, John</i>	1	E-130	0700-0700	DP 20	
WT PVT E-131 HARRIS		<i>Enlow, Clancy</i>	1	E-131	0700-0700	DP 20	
HEQB RUSHDOONY O-286		<i>Rushdoony, Issac</i>	1	O-286	0700-0700	DP 20	
<b>6. Work Assignments:</b> <i>FALM 0-241 (was unassigned)</i> Continue to build and improve lines Conduct damage assessment <i>DOZ E-28 from DIV J</i> <i>DOZ E-29 from DIV J</i>							
<b>7. Special Instructions:</b> <i>* ALL Resources that are Italicized MUST report to Check-In to receive their new Request #'s *</i> FEMP VASQUEZ / FEMT FERREIRA shared throughout Branch VII							
<b>8. Communications (radio and/or phone contact numbers needed for this assignment):</b>							
Name	Ch	Function	Rx Freq	Rx Tone	Tx Freq	Tx Tone      Notes	
CDF C2	1, 2, 3	COMMAND	151.2650	103.5 (T8)	159.3300	SEE ICS 205      Tone 9, Tone 11, Tone 16	
NIFC T5	10	TACTICAL	166.7250	0.0	168.7250	0.0	
CALCORD	13	MEDICAL	156.0750	156.7 (T6)	156.0750	156.7 (T6)	
SEE ICS 205	14, 15	AIR TO GROUND				CDF T15, CDF T22	
GUARD	16	EMERGENCY	168.6250	0.0	168.6250	110.9 (T1)	
<b>9. Prepared by:</b> Name: Keith Tsudama      Pos/Title: RESL      Signature: <i>[Handwritten Signature]</i> ICS 204      Date/Time: 10/10/2017 2300 hours							

### ASSIGNMENT LIST (ICS 204)

<b>1. Incident Name:</b> WIND COMPLEX	<b>2. Operational Period:</b> Date From: 10/11/17      Date To: 10/12/17 Time From: 0700      Time To: 0700	<b>3.</b>  Branch: <b>VII - La Porte</b>  Div/Group: <b>Q</b>  Quebec Page 2 of 2					
<b>4. Operations Personnel:</b> Operations Section Chief: <b>Charlie Blankenheim</b> Night Ops: <b>Mike Inman</b> <i>Ryan Daniels</i> Branch Director: <b>Garrett Sjolund</b> Branch Safety: <b>Glinten</b> Division/Group Supervisor: <b>Darren Bakken / Randy Northrup (T)</b> <del>Hamilton</del>							
<b>5. Resources Assigned:</b> ** Resources Below in Bold are 12 Hour **					Reporting Location, Special Equipment, Remarks, Notes, and Information Time      Location		
Resource Identifier	ALS	Leader	Personnel	Request #	Time	Location	
FEMP VASQUEZ O-174	ALS	<b>Vasquez, Justin A</b>	<b>1</b>	O-174	0700-0700	DP 20	
FEMT FERREIRA O-97		<b>Ferreira, Eric</b>	<b>1</b>	O-97	0700-0700	DP 20	
<b>6. Work Assignments:</b>							
Continue to build and improve lines							
Conduct damage assessment							
<b>7. Special Instructions:</b>							
* ALL Resources that are <i>Italicized</i> MUST report to Check-In to receive their new Request #'s *							
FEMP VASQUEZ / FEMT FERREIRA shared throughout Branch VII							
<b>8. Communications</b> (radio and/or phone contact numbers needed for this assignment):							
Name	Ch	Function	Rx Freq	Rx Tone	Tx Freq	Tx Tone	Notes
CDF C2	1, 2, 3	COMMAND	151.2650	103.5 (T8)	159.3300	SEE ICS 205	Tone 9, Tone 11, Tone 18
NIFC T5	10	TACTICAL	166.7250	0.0	166.7250	0.0	
CALCORD	13	MEDICAL	156.0750	156.7 (T6)	156.0750	156.7 (T6)	
SEE ICS 205	14, 15	AIR TO GROUND					CDF T15, CDF T22
GUARD	16	EMERGENCY	168.6250	0.0	168.6250	110.9 (T1)	
<b>9. Prepared by: Name:</b> Keith Tsudama      Pos/Title: RESL      Signature: <i>[Handwritten Signature]</i>							
<b>ICS 204</b> Date/Time: 10/10/2017 2300 hours							

### ASSIGNMENT LIST (ICS 204)

<b>1. Incident Name:</b> WIND COMPLEX		<b>2. Operational Period:</b> Date From: 10/11/17    Date To: 10/12/17 Time From: 0700    Time To: 0700				<b>3.</b>  Branch: <b>VII - La Porte</b>  Div/Group: <b>S</b>  <b>Sierra</b>	
<b>4. Operations Personnel:</b> Operations Section Chief: <b>Charlie Blankenheim</b> Night Ops: <b>Mike Inman</b> Branch Director: <b>Garrett Sjolund</b> Branch Safety: <b>Clinton Hamilton Ryan Danelsen</b> Division/Group Supervisor: <b>Mike Stewart</b>							
<b>5. Resources Assigned:</b> <b>** Resources Below in Bold are 12 Hour **</b>							
Resource Identifier	ALS	Leader	Personnel	Request #	Reporting Location, Special Equipment, Remarks, Notes, and Information Time	Location	
STA OES 4824A		Hubbard, Kris	22	E-207	0700-0700	DP 20	
ENG NEU 2362		Rouse, Andrew	4	E-223	0700-0700	DP 20	
ENG NEU 2373		McConnell, Micah	3	E-218	0700-0700	DP 20	
ENG NEU 2374		Radford, Phillip A	3	E-215	0700-0700	DP 20	
ENG NEU 2382		Baker, Jacob	3	E-227	0700-0700	DP 20	
ENG NEU 2392		Hollingshead, Justin	3	E-220	0700-0700	DP 20	
STG SHU 9241G		Covert, Don		*	0700-0700	DP 20	
STG					0700-0700	DP 20	
DOZ PVT E-7 Vincini		Vincini, Tony	2	E-7*	0700-0700	DP 20	
DOZ PVT E-8 KK		Kramer, Kurt	2	E-8*	0700-0700	DP 20	
DOZ PVT E-18 Forkner		Forkner, Brian	2	E-18*	0700-0700	DP 20	
<b>DOZ PNF 2</b>		<b>Collins, David</b>	<b>1</b>	<b>E-11*</b>	<b>0700-1900</b>	<b>DP 20</b>	
W/T PVT E-43 Spit Fire		Lewis, Jake	2	E-43*	0700-0700	DP 20	
W/T PVT E-129 Kullkov			2	E-129	0700-0700	DP 20	
W/T PVT E-132 Harris		Mcgary, John	2	E-132	0700-0700	DP 20	
W/T PVT E-133 Alan's Water		Logue, Ricki	2	E-133	0700-0700	DP 20	
HEQB					0700-0700	DP 20	
<b>6. Work Assignments:</b> Continue to build and improve lines Conduct damage assessment							
<b>7. Special Instructions:</b> * ALL Resources that are <i>Italicized</i> MUST report to Check-In to receive their new Request #'s * FEMP VASQUEZ / FEMT FERREIRA shared throughout Branch VII							
<b>8. Communications</b> (radio and/or phone contact numbers needed for this assignment):							
Name	Ch	Function	Rx Freq	Rx Tone	Tx Freq	Tx Tone	Notes
CDF C2	1, 2, 3	COMMAND	151.2650	103.5 (T8)	159.3300	SEE ICS 205	Tone 9, Tone 11, Tone 16
NIFC T5	10	TACTICAL	166.7250	0.0	166.7250	0.0	
CALCORD	13	MEDICAL	156.0750	156.7 (T6)	156.0750	156.7 (T6)	
SEE ICS 205	14, 15	AIR TO GROUND					CDF T15, CDF 122
GUARD	16	EMERGENCY	168.6250	0.0	168.6250	110.9 (T1)	
<b>9. Prepared by: Name:</b>		Keith Tsudama	Pos/Title:	RESL	Signature: 		
<b>ICS 204</b>		Date/Time:	10/10/2017	2300 hours			

## ASSIGNMENT LIST (ICS 204)

<b>1. Incident Name:</b> WIND COMPLEX		<b>2. Operational Period:</b> Date From: 10/11/17    Date To: 10/12/17 Time From: 0700    Time To: 0700				<b>3.</b>  Branch: <b>VII - La Porte</b>  Div/Group: <b>U</b>  <b>Uniform</b>	
<b>4. Operations Personnel:</b> Operations Section Chief: <b>Charlie Blankenheim</b> Night Ops: <b>Mike Inman</b> Branch Director: <b>Garrett Sjolund</b> Branch Safety: <del>Clinton</del> Division/Group Supervisor: <b>Mark Rottisberger</b> <b>Hamilton Ryan Dainelsen</b>							
<b>5. Resources Assigned:</b>		<b>** Resources Below in Bold are 12 Hour **</b>				Reporting Location, Special Equipment, Remarks, Notes, and Information Time                      Location	
Resource Identifier	ALS	Leader	Personnel	Request #	Time		
STA XTB 4235A		Reid, Jim	21	E-183	0700-0700	DP 20	
ENG NEU 2371		<i>Harcourt, Wesley</i>	3	<i>E-58*</i>	0700-0700	DP 20	
ENG NEU 2381			3	<i>E-164*</i>	0700-0700	DP 20	
ENG NEU 2395		Lee, John	3	E-163	0700-0700	DP 20	
ENG 54				*	0700-0700	DP 20	
ENG TNF 341		Holloway, Christopher James	7	<b>E-216</b>	<b>0700-1900</b>	<b>DP 20</b>	
CRW NEU WAR 4				*	0700-0700	DP 20	
CRW NEU WAR 5				*	0700-0700	DP 20	
FEATHER RIVER IHC				*	<b>0700-1900</b>	<b>DP 20</b>	
DOZ PVT E-5				<i>E-5*</i>	0700-0700	DP 20	
DOZ ENF 3				<b>E-13</b>	<b>0700-1900</b>	<b>DP 20</b>	
W/T PVT E-134 EL DORADO SUPP		Starks, Erik	<i>* 2</i>	E-134	0700-0700	DP 20	
W/T PVT E-135 J & M		Duncan, Jack	2	E-135	0700-0700	DP 20	
W/T PVT E-137 DAVIS		Franks, Steve	2	E-137	0700-0700	DP 20	
W/T PVT E-138 DAVIS		Davis, Donald	2	E-138	0700-0700	DP 20	
HEQB					0700-0700	DP 20	
HEQB					0700-0700	DP 20	
<b>6. Work Assignments:</b> Continue to build and improve lines Conduct damage assessment							
<b>7. Special Instructions:</b> <i>* ALL Resources that are Italicized MUST report to Check-In to receive their new Request #'s *</i> FEMP VASQUEZ / FEMT FERREIRA shared throughout Branch VII							
<b>8. Communications</b> (radio and/or phone contact numbers needed for this assignment):							
Name	Ch	Function	Rx Freq	Rx Tone	Tx Freq	Tx Tone	Notes
CDF C2	1, 2, 3	COMMAND	151.2650	103.5 (T8)	159.3300	SEE ICS 205	Tone 9, Tone 11, Tone 16
NIFC T6	11	TACTICAL	166.7750	0.0	166.7750	0.0	
CALCORD	13	MEDICAL	156.0750	156.7 (T6)	156.0750	156.7 (T6)	
SEE ICS 205	14, 15	AIR TO GROUND					CDF T15, CDF T22
GUARD	16	EMERGENCY	168.6250	0.0	168.6250	110.9 (T1)	
<b>9. Prepared by: Name:</b> Keith Tsudama		<b>Pos/Title:</b> RESL		<b>Signature:</b>			
ICS 204		<b>Date/Time:</b> 10/10/2017 2300 hours					



## ASSIGNMENT LIST (ICS 204)

<b>1. Incident Name:</b> WIND COMPLEX		<b>2. Operational Period:</b> Date From: 10/11/17    Date To: 10/12/17 Time From: 0700    Time To: 0700			<b>3.</b>  Branch:  Staging <b>Fairground</b>		
<b>4. Operations Personnel:</b> Operations Section Chief: <b>Charlie Blankenheim</b> <b>Night Ops: Mike Inman</b> Branch Director: Division/Group Supervisor:							
<b>** Resources Below in Bold are 12 Hour **</b>							
<b>5. Resources Assigned:</b>	ALS	Leader	Personnel	Request #	Reporting Location, Special Equipment, Remarks, Notes, and Information Time                      Location		
W/T E-195							
W/T E-193							
W/T E-154							
W/T E-290							
W/T E-294							
W/T E-291							
W/T E-42							
D02 E-18							
<b>6. Work Assignments:</b> Monitor command frequencies. Maintain 3 minute response time.							
<b>7. Special Instructions:</b>   							
<b>8. Communications</b> (radio and/or phone contact numbers needed for this assignment):							
Name	Ch	Function	Rx Freq	Rx Tone	Tx Freq	Tx Tone	Notes
CDF C2	1, 2, 3	COMMAND	151.2650	103.5 (T8)	159.3300	SEE ICS 205	Tone 9, Tone 11, Tone 16
CALCORD	13	MEDICAL	156.0750	156.7 (T6)	156.0750	156.7 (T6)	
SEE ICS 205	14, 15	AIR TO GROUND					CDF T15, CDF T22
GUARD	16	EMERGENCY	168.6250	0.0	168.6250	110.9 (T1)	
<b>9. Prepared by: Name:</b> Keith Tsudama		Pos/Title: RESL		Signature:			
ICS 204		Date/Time: 10/10/2017 2300 hours					








<b>MEDICAL PLAN</b> ICS 206	1. INCIDENT NAME <b>Wind Complex</b>	2. DATE PREPARED 10-10-17	3. TIME PREPARED 2100 hrs	4. OPERATIONAL PERIOD 10/11/17 – 10/12/17 0700 - 0700							
	<b>5. INCIDENT MEDICAL AID STATIONS</b>										
MEDICAL AID STATIONS		LOCATION			PARAMEDICS						
					YES	NO					
Medical Supplies		Base Camp				X					
MERT w/treatment		Base Camp				X					
<b>6. TRANSPORTATION</b>											
<b>A. AMBULANCE SERVICES</b>											
NAME		LOCATION		PHONE		PARAMEDICS					
						YES	NO				
Sierra Nevada Ambulance		155 Glasson Way, Grass Valley, CA		(530) 274-6001		X					
Bi-County Ambulance		1700 Poole Blvd, Yuba City, CA		(530) 674-2780		X					
GUARD 840 24hr hoist		Mather Air Base (Local ECC)		(650) 245-1715		X					
CALSTAR		13750 Lincoln Way, Auburn, CA		(888) 692-6692		X					
<b>B. INCIDENT AMBULANCES</b>											
NAME		LOCATION			PARAMEDICS						
					YES	NO					
Bi-County Ambulance M-114		Fire Station 91 (Loma Rica) LaPorte-Cascade Fire			X						
Sierra Nevada Ambulance		911 Contract for McCourtney and Lobo Fires			X						
<b>7. HOSPITALS</b>											
NAME		ADDRESS		TRAVEL TIME		PHONE		HELIPAD		BURN CENTER	
				AIR	GRND			YES	NO	YES	NO
Sierra Nevada Hospital		155 Glasson Way, Grass Valley		10	40	(530) 274-6001		X			X
Sutter Roseville Medical Center		1 Medical Plaza Dr, Roseville		25	90	(916) 781-1811		X			X
Rideout Hospital		726 4 <sup>th</sup> St, Marysville		15	45	(530) 749-4300			X		X
UC Davis Medical Center		2315 Stockton Blvd, Sacramento		45	120	(916) 734-3636		X		X	
<b>8. MEDICAL EMERGENCY PROCEDURES</b>											
<b>EMERGENCY FREQUENCY:</b> AIR GUARD						<b>INJURY REPORTING PROCEDURES</b>					
<b>LINE EMERGENCY:</b> Crew Supervisor will contact Division Supervisor with patient complaint/condition and location. <ul style="list-style-type: none"> <li>Division/Group Supervisor contacts: <ol style="list-style-type: none"> <li>Closest EMS resource</li> <li>Communications</li> </ol> </li> <li>Communications contacts: <ol style="list-style-type: none"> <li>Ground or Air ambulance as requested</li> <li>Operations</li> <li>Safety</li> <li>Medical Unit</li> </ol> </li> <li>Division Supervisor or designee will serve as point of contact and run medical emergency on assigned channel. <ol style="list-style-type: none"> <li>A pre-assigned tactical frequency (i.e. CALCORD) should be used for IWI and only for duration of need.</li> </ol> </li> <li>Communications will clear command channel for emergency traffic as needed and only for duration of need.</li> </ul>						NATURE OF INJURY _____ LOCATION OF PATIENT _____ POINT OF CONTACT _____ TRANSPORTATION REQUESTED BY: AIR ___ GROUND ___ POINT OF PICKUP _____ LAT _____ LONG _____ PATIENT UNIT ID _____ IS AN EMT WITH PATIENT: YES ___ NO ___ AGE _____ SEX: MALE ___ FEMALE ___					
<b>CAMP EMERGENCY:</b> Contact Communications for 911 response following local procedures. <ul style="list-style-type: none"> <li>Communications contacts: <ol style="list-style-type: none"> <li>Medical Unit Leader <ul style="list-style-type: none"> <li>-Crew Supervisor</li> <li>-Logistics</li> <li>-Comps/Claims</li> </ul> </li> <li>Safety</li> </ol> </li> </ul>						<b>ALL EMERGENCIES---Secure the area and identify witnesses for later investigation. Keep an accurate log of events.</b>					
ICS 206 (Rev 03/12)		9. PREPARED BY: (Medical Unit Leader) Justin VanderHulst (MED1.) <i>J. VanderHulst</i>				10. REVIEWED BY: (Safety Officer) <i>[Signature]</i>					

# ICS 205 - INCIDENT RADIO COMMUNICATIONS PLAN

<b>1. Incident Name:</b> <b>WIND COMPLEX</b>		<b>2. Date/Time Prepared</b> Date: 10/10/2017 Time: 1800		<b>3. Operational Period:</b> Date To: 10/12/2017 Time To: 0700				
<b>Controlled Unclassified Information//Basic</b>								
<b>4. Communications</b>								
Ch#	Function	Name	Assigned To	Rx Freq	Rx Tone	Tx Freq	Tx Tone	Notes
1	COMMAND	CDF CMD 2	INCIDENT WIDE	151.2650	103.5 (T8)	159.3300	100.0 (T9)	TONE 9 - OREGON PEAK
2	COMMAND	CDF CMD 2	INCIDENT WIDE	151.2650	103.5 (T8)	159.3300	114.8 (T11)	TONE 11 - ALDER SPRINGS
3	COMMAND	CDF CMD 2	INCIDENT WIDE	151.2650	103.5 (T8)	159.3300	192.8 (T16)	TONE 16 - WOLF MTN
4	TACTICAL	CDF TAC 1	DIV A	151.2575	192.8 (T16)	151.2575	192.8 (T16)	
5	TACTICAL	CDF TAC 24	BRANCH II DIV B & D	151.3175	192.8 (T16)	151.3175	192.8 (T16)	
6	TACTICAL	CDF TAC 31	BRANCH II DIV F	159.3825	192.8 (T16)	159.3825	192.8 (T16)	
7	TACTICAL	VFIRE 24	BRANCH V DIV H & J	154.2725	156.7 (T6)	154.2725	156.7 (T6)	
8	TACTICAL	VFIRE 25	BRANCH V DIV K & M	154.2875	156.7 (T6)	154.2875	156.7 (T6)	
9	TACTICAL	VFIRE 26	BRANCH V DIV O	154.3025	156.7 (T6)	154.3025	156.7 (T6)	
10	TACTICAL	NIFC TAC 5	BRANCH VII DIV Q & S	166.7250	0.0	166.7250	0.0	
11	TACTICAL	NIFC TAC 6	BRANCH VII DIV U	166.7750	0.0	166.7750	0.0	
12								
13								
14	EMS COORDINATION	CALCORD	INCIDENT WIDE	156.0750	156.7 (T6)	156.0750	156.7 (T6)	
15	AIR TO GROUND	CDF T15	INCIDENT WIDE	159.2700	192.8 (T16)	159.2700	192.8 (T16)	ALL BRANCHES IN COMPLEX
16	EMERGENCY ONLY	AIR GUARD	INCIDENT WIDE	168.6250	0.0	168.6250	110.9 (T1)	GPH/DPH, 16 CH RADIOS
17								
18								
19								
20	EMERGENCY ONLY	AIR GUARD	INCIDENT WIDE	168.6250	0.0	168.6250	110.9 (T1)	GPH/DPH CMD, 20 CH RADIOS
<b>5. Special Instructions</b>								
<b>Controlled Unclassified Information//Basic</b>								
Use the ICS 205 to reference and to correlate with the ICS 204's depending on your work assignments								
<b>6. Prepared by (Communications Unit Leader):</b> Name: John Aguilera, COML IMT #2				Signature: 				
ICS 205				Date/Time: 10/10/17 1800				

***TRAINING SPECIALIST  
MESSAGE***

**A Training Specialist is now on the incident.**

***ALL ASSIGNED  
TRAINEES***

**working on Position Task Books will need to register with the Incident Training Specialist in order to receive proper credit for your assignment.**

**The Training Specialist is available immediately following the morning Operations Briefing.  
Location: Red Building, next to check-in**

**TRAINING SPECIALIST**

**Claudia Soiza  
Cell-(949)632-7813**

**Incident Trainee/Trainer Data Form  
Wind Complex CA-NEU 026295**

Training Specialist: Claudia Soiza      949.632.7813

- All Incident trainees, including those on Firefighting Modules at your earliest opportunity complete this form and see the Training Specialist.
- Prior to or as you process through DEMOB, remember to close your training package. To close your training package bring: 1) A performance rating from your trainer. (ICS 225)  
2) Your task book that has as many entries as possible by your Trainer.

**Trainee Data**

Trainee Name: \_\_\_\_\_ ICS Trainee Position: \_\_\_\_\_

Request # (A,C,E, or O): \_\_\_\_\_ Agency Designator ( Ex. CA-RRU): \_\_\_\_\_

Ordered as Trainee? Y N      Priority Trainee \_\_\_\_\_ Local Forest Trainee \_\_\_\_\_ IMT Trainee

Date Assigned: \_\_\_\_\_ Cell / Contact # While on Incident: \_\_\_\_\_

---

**Training Records Mailed To: (Fire Chief, Training Officer):**

Name: \_\_\_\_\_ Title \_\_\_\_\_

Name of Agency/Unit: \_\_\_\_\_

Agency/Unit Address: \_\_\_\_\_

City: \_\_\_\_\_ State: \_\_\_\_\_ Zip Code: \_\_\_\_\_ Phone: \_\_\_\_\_

---

**Trainee Prerequisites**

1. Possesses valid Qualification Card or agency certification card?      \_\_\_ Yes \_\_\_ No

2. Trainee has current position task book issued by home unit?      \_\_\_ Yes \_\_\_ No

Current Task Book Progress (Circle)    0%    25%    50%    75%    90%

Priority Open Task in PTB (What do you need to accomplish on this incident?)

---

**Trainer/Evaluator Data**

Trainer / Evaluator Name: \_\_\_\_\_ ICS position on fire: \_\_\_\_\_

Home Unit: \_\_\_\_\_ Agency Designator (Ex CA-RRU): \_\_\_\_\_

Request # (A,C,E,O): \_\_\_\_\_

Work Address: \_\_\_\_\_

City: \_\_\_\_\_ State: \_\_\_\_\_ Zip Code: \_\_\_\_\_

Cell / Contact While on Incident: \_\_\_\_\_

## WIND COMPLEX FINANCE MESSAGE

### COMP / CLAIMS

- Vehicles rented by CAL FIRE are considered department vehicles
- All accident reporting procedures must be followed, including reporting the accident to COMP/CLAIMS and SAFETY
- All required forms and documentation shall be completed and brought to COMP / CLAIMS

### SHIFT TICKETS

- DIVS and OPBD must complete shift tickets for all hired equipment, including runners and fallers
- Turn completed shift tickets into **TIME UNIT** daily

### OFF SITE FEEDING

- Resources staying in Rocklin or Roseville have authorization to feed off site, dinner only
- Follow Per diem rates, make the purchase and bring copies of receipts and AO 341 into Finance
- All other resources must feed in Base Camp

### HIRED EQUIPMENT VENDORS

- Please bring your agreements into the TIME UNIT to start the documentation process

### FEDERAL TIME KEEPERS

- Onsite and located in the Finance shop

### FINANCE CONTACTS

- **Comp/Claims 24/7 Phone: 925-407-6363**
- **Cal OES Rep, Chief Zander: 916-712-6771**
- **Finance Section Chief, Bill Winter, 805-903-3491**
- **Deputy Finance Section Chief, Dale Barnett, 530-524-5623**

# SHIFT TICKET EXAMPLE

EMERGENCY SHIFT TICKET and EVALUATION FORM						Contractor Name			
Incident or Project Name <b>Wind complex</b>			Incident Number <b>CANEU 26295</b>		Request Number <b>E# 123</b>		Contractor Name <b>DOZER DUDE</b>		
Operator #1 <b>Chucke Carroll</b>			Operator #2 <b>Bill Winter</b>			Operator #1 <b>Chucke Carroll</b>		Operator #2 <b>Bill Winter</b>	
Agreement Number <b>XXX - 000000 - 00</b>						Operator Furnished By:			
Equipment Make <b>CAT</b>			Equipment Model / Type <b>D6XM</b>			Operating Supplies Furnished By:			
Serial Number <b>111111</b>			Licence Number <b>111111</b>			Equipment Status			
Equipment Use						Inspected		<input checked="" type="checkbox"/> Under Agreement	
Date						Released by Government			
Mo / Day						Withdrawn by Contractor			
Start						Remarks/Comments **			
Stop						<b>TWO OPERATORS NO DAMAGE/ NO CLAIMS</b>			
Work									
Assignment									
8/3 0700 2400 17									
8/4 0001 0700 7									
Vendor Rating						Govt. Rep. Name and Position - PRINT			
Poor* Avg. Good Exc. N/A						Jason Marsh			
Met Performance Expectations						Govt. Rep. Signature		Jason Marsh	
Equipment in Safe Working Condition						Contractor Signature		Chucke Carroll	
Operator Skill Level						Date		08/04/15	
Operates Safely						Time		0800	
Operator's Cooperation Level						CALFIRE 297		(Rev 3-2011)	
Overall Performance									
* NOTE: Any rating of POOR requires an explanation in Comment Section.									
**Final evaluation or for more documentation, use an ICS Form 230 or equivalent.									
Pink - Finance		Blue - Home Unit HIE Coordinator		Yellow - Vendor		White - Govt Representative			

EMERGENCY SHIFT TICKET and EVALUATION FORM						Contractor Name				
The responsible Government Officer will complete this form each shift						EXCAVATOR COMPANY				
Incident or Project Name <b>PONDEROSA FIRE</b>			Incident Number <b>CABTU013737</b>		Request Number <b>E # Here</b>		Operator #1 <b>Bob Smith</b>		Operator #2	
Agreement Number <b>XXX - 000000 - 00</b>						Operator Furnished By:				
Equipment Make <b>CAT</b>			Equipment Model / Type <b>EXCAVATOR F900</b>			Operating Supplies Furnished By:				
Serial Number <b>1XP3ESMP14239012</b>			Licence Number <b>9999999</b>			Equipment Status				
Equipment Use						Inspected		<input checked="" type="checkbox"/> Under Agreement		
Date						Released by Government				
Mo / Day						Withdrawn by Contractor				
Start						Remarks/Comments **				
Stop						<b>1 OPERATOR NO DAMAGE/ NO CLAIMS</b>				
Work										
Assignment										
8/3 0001 700 7										
8/3 0700 1900 12										
8/3 1900 2400 5										
Vendor Rating						Govt. Rep. Name and Position - PRINT				
Poor* Avg. Good Exc. N/A						Jason Marsh				
Met Performance Expectations						Govt. Rep. Signature		Jason Marsh		
Equipment in Safe Working Condition						Contractor Signature		Bob Smith		
Operator Skill Level						Date		08/04/15		
Operates Safely						Time		0800		
Operator's Cooperation Level						CALFIRE 297		(Rev 3-2011)		
Overall Performance										
* NOTE: Any rating of POOR requires an explanation in Comment Section.										
**Final evaluation or for more documentation, use an ICS Form 230 or equivalent.										
Pink - Finance		Blue - Home Unit HIE Coordinator		Yellow - Vendor		White - Govt Representative				

Turn shift tickets into Finance.



# WIND COMPLEX PUBLIC INFORMATION



**Incident Information Line: 503-823-4083**

Media Line: 916-203-4153

## **MEDIA**

California State Penal Code Section 409.5(d) allows the news media to enter scenes of disaster, riot, or civil disturbance. Properly identified members of the news media should not be restricted from entering the locations specified within the code, even if the area presents a danger to them. Media members should be advised of the nature of possible danger. Members of the media do not have the right to access crime scenes or any area where their presence may interfere with incident operations, mitigation or evidence collection.

- The media may only access private property with the property owner's permission. Fire personnel cannot provide members of the media with authorization to enter private property.
- If approached and questioned by the media and/or the public, talk about your assignment or task at hand. If need be, direct the questioning party to the incident PIO.
- Do not speculate or give opinions
- There is no such thing as an "off the record" comment.

## **CAL FIRE SOCIAL MEDIA POLICY (Social Media 0691)**

Social Media is increasingly being used by public agencies and the media as well as the public. This form of communication continues to grow rapidly in order to supply the public's desire for instant information gratification. All personnel assigned to a CAL FIRE incident will adhere to the CAL FIRE Social Media Policy. Further information about the CAL FIRE Social Media Policy can be obtained from the Information Officer. If you are uncertain, please ask. **Do not post:**

- Inappropriate information, pictures or videos
- Opinions regarding the incident or policy
- Endorsements of any kind

## **PICTURES AND VIDEO OF INCIDENT**

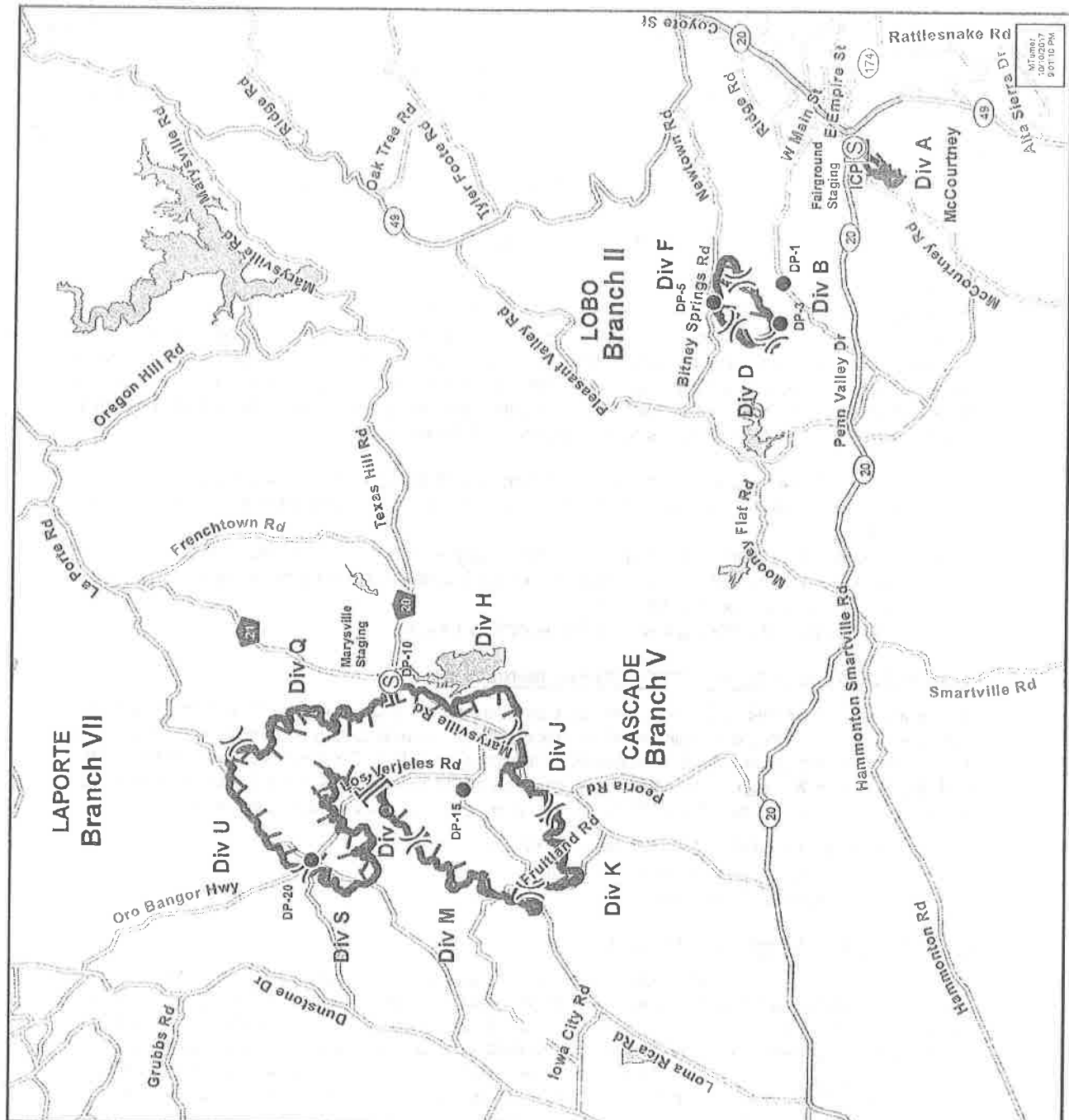
We are in a new era of media. Media no longer means the news/broadcast industry but now refers to anyone that has the capability to shoot video and or photographs and post them onto social media in a matter of minutes. Unfortunately we have seen some instances of video or photographs that have depicted unsafe, unprofessional or embarrassing circumstances which are a serious breach of ethics. When this happens it reflects poorly on all that are attached to this incident. Posting an inappropriate video, photo or blog comment could have unwanted effects. It may be unsafe to shoot photos or video and a firefighter who is concentrating on a camera can't be looking up, down and all around.

## **LOST AND FOUND**

The Information staff will manage *Lost and Found* items for the incident. If you have lost an item, leave your contact information and what you have lost at the Information trailer. If you have found an item on the incident, bring the item to the Information trailer.

## **MAIL SERVICE**

The Information staff will assist you in mailing and receiving letters and packages.

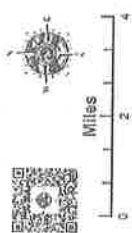


M Turner  
30/02/2017  
5:01:10 PM



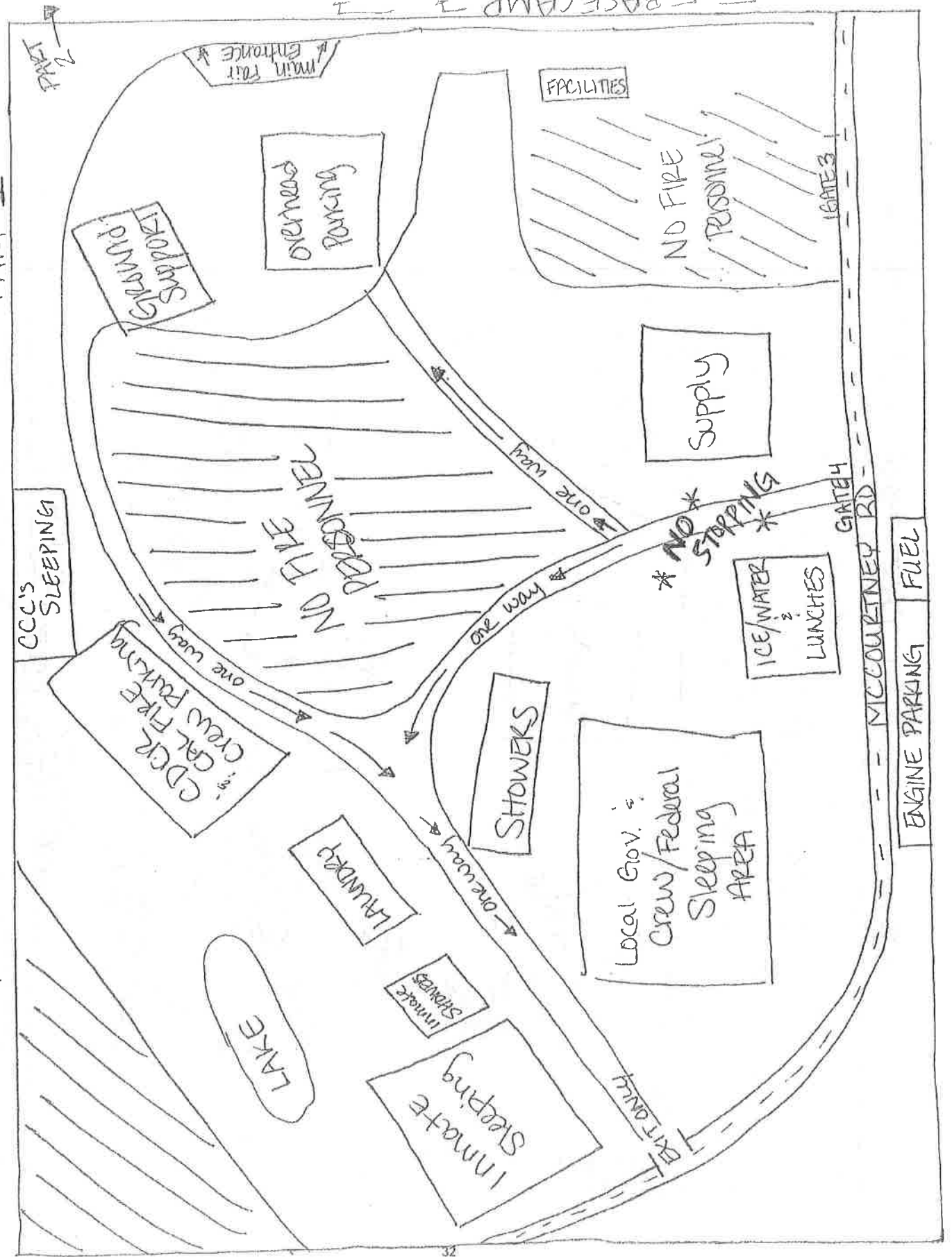

**TRAVEL MAP**  
**Wind Complex**  
 CA-NEU-026295  
 10/11/2017

- Dispatch Point
- Incident Command Post
- Staging Area
- Division
- Branch
- Uncontrolled Fire Edge
- Campground Loop
- Hazards
- Highways
- Major Roads
- Ramps
- Water Features





# NEU WIND COMPLEX BASE CAMP MAP PART 1



NEU WIND COMPLEX BASE CAMP MAP PART 2

