

# WIND COMPLEX

## CA-NEU-026295

### INCIDENT ACTION PLAN



#### OPERATIONAL PERIOD

10/11/2017 - 10/12/2017

0700 - 0700







## INCIDENT OBJECTIVES (ICS 202)

<b>1. Incident Name:</b> WIND COMPLEX	<b>2. Operational Period:</b>	Date From: 10/11/2017	Date To: 10/12/2017	
		Time From: 0700	Time To: 0700	

**3. Objective(s):**

Management Objectives:

- Provide for emergency personnel and public safety at all times.
- Protect property, improvements, and infrastructure.
- Ensure repopulation takes place in a quick, efficient, and effective manner.
- Ensure coordinated, timely and accurate release of public information.
- Foster and maintain relationships with all cooperators and stakeholders.
- Protect economic, natural, cultural and heritage resources.
- Maintain fiscal accountability and keep costs commensurate with values at risk.

Control Objectives:

**Division A - McCourtney Incident:**

- Keep the fire within the established perimeter

**Branch II - Lobo Incident:**

- Keep the fire North of Rough and Ready Highway
- Keep the fire South of Bitney Springs Road
- Keep the fire East of Lake Wildwood Estates
- Keep the fire West of the intersection of Bitney Springs Road and Newtown Road

**Branch V - Cascade Incident / Branch VII - LaPorte Incident:**

- Keep the fire North of Powerline Right of Way
- Keep the fire South of LaPorte Road
- Keep the fire East of Dunstone Drive
- Keep the fire West of Willow Glen Road and Collins Reservoir

General Situational Awareness:

Long shifts, draw down of resources, high likelihood for strong winds and new IA starts.

**5. Site Safety Plan Required?** Yes  No


**Approved Site Safety Plan(s) Located at:**

**6. Incident Action Plan**

- |  |   |   |  |
|--|---|---|--|
| <input checked="" type="checkbox"/> ICS 203          | <input checked="" type="checkbox"/> ICS 204   | <input type="checkbox"/> WUI Guidelines                 | <input checked="" type="checkbox"/> Finance Message    |
| <input checked="" type="checkbox"/> Weather Forecast | <input checked="" type="checkbox"/> ICS 220   | <input type="checkbox"/> Suppression Repair Plan        | <input checked="" type="checkbox"/> PIO Message        |
| <input checked="" type="checkbox"/> Fire Behavior    | <input checked="" type="checkbox"/> ICS 206   | <input type="checkbox"/> Logistics Message              | <input checked="" type="checkbox"/> Transportation Map |
| <input checked="" type="checkbox"/> Safety Message   | <input checked="" type="checkbox"/> ICS 205   | <input type="checkbox"/> Demob Plan                     | <input checked="" type="checkbox"/> Base Camp Map      |
| <input checked="" type="checkbox"/> ICS-215a         | <input type="checkbox"/> Firing Ops Checklist | <input checked="" type="checkbox"/> Training Specialist | <input checked="" type="checkbox"/> ICS 214            |

**7. Prepared By:** Andy Murphy

Position/Title: PSC

Signature: 


**8. Approved by Incident Commander:**

Glenn Patterson

Signature: \_\_\_\_\_

ICS 202

## ORGANIZATION ASSIGNMENT LIST (ICS 203)

<b>1. Incident Name:</b> WIND COMPLEX		<b>2. Operational Period: Date From:</b> 10/11/2017		<b>Date To:</b> 10/12/2017	
		<b>Time From:</b> 0700		<b>Time To:</b> 0700	
<b>3. Incident Commander(s) and Command Staff:</b>			<b>7. Operation Section:</b>		
IC/UC's	Glenn Patterson / Dave Allen (T)	Chief	Charlie Blankenheim		
Deputy	Ron Myers	Deputy	Mark Brunton		
Safety Officer	Steve Walker	Night Ops	Mike Inman		
Information Officer	Ron Oatman				
Liaison Officer	Mike Martin	<b>Branch</b>			
		Division/Group	A		
		Division/Group			
		Division/Group			
<b>4. Agency/Organization Representatives:</b>					
Agency/Organization	Name	Division/Group			
Yuba County Sheriff	Sgt. Smith	Division/Group			
Butte County Sheriff	Lt. Smith	<b>Branch</b>	II - Lobo	Eric Schwab	
Nevada County Sheriff	Capt. Peltitt	Division/Group	B		
Red Cross	Artena Moon	Division/Group	D	Gene Neely	
C.H.P.	Lt. Steffenson	Division/Group	F		
PG&E	Rob Cone	Division/Group			
CDCR	Lt. Hill	Division/Group			
Cal OES	Corey Zander	<b>Branch</b>	V - Cascade	Matt Wallen	
Nev. County Animal Evac	Bill Alexander	Division/Group	H		
Cal Trans	Shelly Pangman	Division/Group	J		
USFS	Shelly Allen	Division/Group	K		
		Division/Group	M		
		Division/Group	O	Tom Browning	
		<b>Branch</b>	VII - La Porte	Garrett Sjolund	
		Division/Group	Q	Darren Bakken	
<b>5. Planning Section:</b>		Division/Group	S	Mike Stewart	
Chief	Andy Murphy	Division/Group	U	Mark Rotlisberger	
Deputy	Jeff Windham	Division/Group			
Resource Unit	Keith Tsudama / Andy Hubbs / Roger Noon	Division/Group			
Situation Unit	Rob Clark / Dan Brown	Division/Group			
Documentation Unit		<b>Branch</b>			
Demobilization Unit	Nick Lawlor	Staging Area	Marysville		
GISS	Fred Postler	Staging Area	Fairground		
FBAN	Todd Hopkins	Division/Group			
IMET		Division/Group			
Training Tech Spec	Claudia Soiza	Division/Group			
		<b>Air Operations Branch</b>	<b>Director:</b>	Rob Sonsteng	
<b>6. Logistics Section</b>		Air Support Grp Sup	Greg Bradshaw		
Chief	Ken Lowe / Milford Ferguson	Helibase Manager	Byron Vance		
Supply Unit	Matt Siebecke				
Facilities Unit	Devon Ellsworth / Scott Irvine				
<b>8. Finance/Administration Section:</b>		<b>Chief</b>	Bill Winter / Dale Barnett		
Ground Support Unit	Tom Stroing	<b>Time Unit</b>	Chucke Carroll / Andre Schmidt (T)		
Hired Equipment Tech	Jason Marsh	<b>Procurement Unit</b>	Jason McDermott / Sandra Jewel (T)		
Communications Unit	John Aguilera	<b>Comp/Claims Unit</b>	Joe Ekblad		
Medical Unit	Matt Lathrop / Justin Vanderhulst	<b>Cost Unit</b>	Jennifer Fagen / Michelle Patton (T)		
Motel Tech Spec	Paul Pumarejo				
<b>Prepared By: Name:</b>	Andy Murphy	<b>Position/Title:</b>	PSC	<b>Signature:</b> 	
<b>ICS 203</b>		<b>Date/Time:</b>	10/10/2017 2300 hours		

**Forecast:**

SPOT FORECAST for Wind Complex...CALFIRE  
National Weather Service SACRAMENTO CA  
231 PM PDT Tue Oct 10 2017

Forecast is based on request time of 0600 PDT on October 11.  
If conditions become unrepresentative...contact the National Weather Service.

.DISCUSSION...

Wednesday will see a return of an offshore wind from west becoming northwest by late afternoon. Late evening toward midnight, northeast wind will return, but not as strong as the Sunday to Monday event. Low afternoon humidity will increase in the evening before humidity drops Wednesday night. The fires are in a battle zone area with northwest winds in the valley and northeast wind over the foothills during the overnight and morning hours.

.WEDNESDAY...

Sky/weather.....Sunny.  
Max temperature.....73-78.  
Min humidity.....14-18 percent.  
Wind (20 ft).....  
Slope/valley.....West winds 5 to 8 mph. Gusts up to 12 mph in the afternoon.  
Ridgetop.....West 5 to 8 mph gusting 12 mph in the morning.  
Shifting northwest 6 to 10 mph gusting 18 mph by mid afternoon.  
Mixing height.....400 ft AGL increasing to 4100-5900 ft AGL late in the morning.  
Transport winds.....Northwest 5 mph increasing to 10 mph.  
CWR.....0 percent.  
LAL.....1.

.WEDNESDAY NIGHT...

Sky/weather.....Clear.  
Min temperature.....50-55.  
Max humidity.....35-40 percent.  
Wind (20 ft).....  
Slope/valley.....North winds 3 to 5 mph. After 2300, northeast 5 to 7 mph gusting to 10 in aligned drainages.  
Ridgetop.....North 5 to 7 mph gusting to 10 mph. After 2200, northeast 7 to 10 mph gusting to 15 mph.  
Mixing height.....4800 ft AGL decreasing to 100-400 ft AGL early in the evening.  
Transport winds.....North 5 mph becoming northeast 5 to 7 mph.  
CWR.....0 percent.  
LAL.....1.

\$\$

Forecaster...JClapp

## FIRE BEHAVIOR FORECAST

FORECAST NUMBER: 002	TYPE OF FIRE: Wildfire
FIRE NAME: Wind Complex	OPERATIONAL PERIOD: 10/11/2017 0700-0700
DATE ISSUED: October 10, 2017	TIME ISSUED: 2300
UNIT: CA-NEU-026295	SIGNED: <i>Todd Hopkins</i> Typed/printed: Todd Hopkins (FBAN)

### INPUTS

WEATHER SUMMARY: See Attached Spot Weather Forecast

\*\*\* RED FLAG WARNING WEDNESDAY EVENING – NORTH WINDS & POOR RH RECOVERY \*\*\*  
EXPECT WIND SHIFT AROUND 0900

WEATHER: Day: Sunny                      Night: Clear

TEMPERATURES / HUMIDITY: Day: 73-78 F Max Temperature / Min Humidity: 14%-18%  
Night: Min Temperature 50-55 F / Max Humidity: 33%-40%

20 FT WINDS: Day: Slope/Valley: West 5-8 mph, Gust 12 mph in the afternoon  
Ridgetop: West 5-8 mph, Gust 12 mph in the morning, becoming northwest 6-10 mph,  
Gust 18 mph in afternoon.

Night: Slope/Valley: North 3-5 mph early evening. After 2300 northeast 5-7 mph Gust 10 mph  
Ridgetop: North 5-7 mph, Gust 10 mph. After 2200 northeast 7-10 mph, Gust 15 mph

### OUTPUTS

#### FIRE BEHAVIOR

**GENERAL:** The fires are burning in a mix of grass and brush with stands of timber and timber litter that are extremely dry and have a heavy fuel loading. The initial fire spread was driven by high winds and low humidity with long range spotting. With the predicted northwest wind, single or group tree or tall brush torching could cast embers and produce spot fires in receptive fuel beds, especially where timber litter fuel loading or heavy grass crops are high. Wind speeds are expected to increase with strong gust which will lead to increased rates of spread and the possibility of long range spotting.

Probability of Ignition: 86%  
100 HRFM: 90<sup>th</sup> Percentile

FDFM: 3%  
LAL: 1

ERC: 68 (77 90<sup>th</sup> Percentile)  
1000 HRFM: Near 90<sup>th</sup> Percentile

#### SPECIFIC:

	Rate of Spread (ft/min)		Flame Length (in feet)		Spotting Distance (in miles)
	Head	Flank	Head	Flank	
Grass	Head	56-223	Head	8-19	1/3 – 1/2
	Flank	4-19	Flank	3-6	
	Backing	2-10	Backing	2-4	
Brush	Head	82-180	Head	19-31	1/3 – 3/4
	Flank	7-15	Flank	6-10	
	Backing	3-8	Backing	4-7	
Timber Litter	Head	11-20	Head	2-8	1/4 – 1/3
	Flank	1-2	Flank	1-3	
	Backing	Less than 1	Backing	1-2	

#### AIR OPERATIONS:

Strong north winds may lay the smoke down making visibility difficult for air resources  
Sunrise: 0710 Sunset: 1831

### SAFETY

- Expect rapid fire growth in light flashy fuels.
- Exceptionally dry fuels warrant a high degree of caution.
- Winds will shift to northwest winds around 0900
- Don't become complacent! Identify your safety zones and escape routes.



WIND COMPLEX SAFETY MESSAGE

**Maintain Situational Awareness**

INCIDENT: Wind Complex CA-NEU-026295 | DATE: October 11, 2017 | TIME: 0700-0700

**Major Hazards and Risks: Extreme fire behavior, Windy dry weather, Limited resources.**

**Fatigue:** Dry windy weather for the next several days, be alert for signs of fatigue and take breaks as necessary. Be alert for signs of fatigue in yourself and others.

**Fire Behavior:** Fuels are receptive to fire spread. A small amount of wind on this dry fuel changes fire behavior dramatically!! Be alert to changes in wind direction and expect changes in fire behavior. Watch for spot fires outside the control lines.

**Downed powerlines:** Follow power line safety guidelines (IRPG pg.24), watch out for burned out power poles.

**Personnel:** Manage yourself and those around you for fatigue. Drink fluids frequently and eat nutritious food regularly. As fatigue increases, injuries tend to increase also. Keep an eye on your crew and partner. Stay engaged and make smart decisions.

**Hazard trees:** Survey your work areas for hazard trees, flag and restrict access, use only qualified personnel for tree felling. Dead trees from bug kill. Review and follow **Hazard Tree Safety**, pg. 22-23 in your IRPG.

**Steep slopes/rolling material:** Watch your footing while hiking in steep terrain. Be careful of loose rolling debris. Maintain Situational Awareness.

**Driving:** Slow Down! Drive defensively. Expect the unexpected around every curve. Drive with headlights and seatbelts on. Coordinate your movements on one-lane roads.

**Review your ICS 206 and know what to do in the event of an (IWI).**

**Lookouts, Communication, Escape routes, Safety zones**

**Tailgate Safety**

- **Accountability:** everyone checks in and everyone checks out. Supervisors know where their crews are at all times
- **Communication:** everyone knows the com-plan
- **Briefing:** everyone knows the plan and the contingency plan
- **Safety gear:** everyone has the appropriate safety gear in good working condition
- **LCES:** they are clear and made known to everyone

**Fatigue Management:**

- Drink plenty of fluids:
  - Water and Gatorade
- Avoid drinking energy drinks
- Rest when you can
- Find shade when you can
- Eat nutritious food regularly
- Work within your abilities.

Incident Safety Officer: Chad Thompson

Incident Commander: Glenn Patterson





### WIND COMPLEX INCIDENT RISK ANALYSIS (ICS 215a)

DIV	HAZARDOUS ACTIONS/CONDITIONS	MITIGATIONS / WARNINGS / REMEDIES
ALL	<b>FATIGUE</b>	<p>Be alert for signs of fatigue and take breaks as necessary.</p> <p>Monitor incoming resources for level of fatigue. Drink water before, during and after shifts, up to 1.5 gal. per shift. Rest when you can.</p> <p>Be alert for signs of heat stress in yourself and others; use the buddy system.</p> <p>Eat small meals often and when possible</p> <p><i>Drink electrolyte drinks at a 3 water to 1 sport drink ratio.</i></p>
ALL	<b>FIRE BEHAVIOR</b>	<p>Review "Severe Fire Behavior Potential" (IRPG p.68).</p> <p>Monitor current weather conditions and forecasts. Make sure all personnel receive thorough briefings every shift.</p> <p>Be observant for wind shifts.</p> <p>Maintain adequate escape routes and safety zones. Advise all personnel if these are compromised or changed. Set trigger points when appropriate.</p> <p><i>Adhere to 10 Standard Orders, mitigate 18 situations, Maintain Situational Awareness.</i></p>
ALL	<b>COMMUNICATIONS</b>	<p>Monitor for changes in the communications plan. Review ICS 205 in your IAP.</p> <p>Monitor command, tactical, and air to ground frequencies.</p>
ALL	<b>STEEP TERRAIN / ROLLING DEBRIS</b>	<p>Watch your footing while hiking in steep terrain.</p> <p>Be careful of loose rolling debris</p> <p>Maintain Situational Awareness.</p>
ALL	<b>HAZARD TREES</b>	<p>Identify and Isolate the area to provide for the safety of others.</p> <p>Flag and make proper notifications. Many pockets of dead trees.</p> <p>Do Not Fall trees out of your certification level.</p>
ALL	<b>LINE CONSTRUCTION</b>	<p>Conduct thorough briefing for all personnel (inside rear cover IRPG).</p> <p>Ensure LCES in place prior to engagement (IRPG p. 7).</p> <p>Establish adequate safety zones (IRPG p.8).</p> <p>Use Downhill Line Checklist (IRPG p. 9).</p> <p>Follow "Look Up, Look Down, Look Around" procedures (IRPG p. 3-4).</p> <p>Utilize Risk Management Process (IRPG p.1).</p>
ALL	<b>DRIVING HAZARDS</b>	<p>Slow Down!</p> <p>Drive defensively! Expect the unexpected around every curve.</p> <p>Drive with headlights and seatbelts on.</p> <p>Narrow dirt roads with limited passing room, coordinate your movements.</p> <p>Civilians are still in the Evacuation Order areas.</p> <p>Use warning devices when operating near traffic.</p>
ALL	<b>AIRCRAFT OPERATIONS</b>	<p>Monitor air-to-ground frequency, they are your eyes in the sky.</p> <p>Use air-to-ground frequency to communicate with aircraft.</p> <p>Use clear, concise statements when directing aircraft.</p>
ALL	<b>DOZER SAFETY</b>	<p>Watch for rolling material. Monitor safe working distances.</p> <p>Avoid working below Dozers.</p> <p>Utilize communication with the operator (radio or hand signals)</p>
ALL	<b>POWER LINES</b>	<p>Follow <i>Power Line Safety</i> guidelines (IRPG pg.24.)</p> <p>Communicate power line hazards to immediate supervisor and hazard flag accordingly.</p> <p>Flag area around downed power lines and deny access.</p> <p>Treat all downed power lines as energized.</p>
ALL	<b>STRUCTURE DEFENSE &amp; HAZARDS</b>	<p>Conduct thorough briefing for all personnel (inside rear cover IRPG).</p> <p>Follow <i>Wildland Urban Interface Guidelines</i> (IRPG p. 12-16).</p>
ALL	<b>MARIJUANA GROW OPERATIONS</b>	<p>Use extreme caution on grow sites. Do not enter.</p> <p>Hazardous chemicals associated with growing operation.</p>
Incident Name: Wind Complex CA-NEU-026295 ICS 215a		DATE PREPARED: <b>October 10, 2017 1800hrs</b> Prepared by: Chad Thompson, Team 2 SOF(T)
		OPERATIONAL PERIOD <b>October 11, 2017</b> <b>0700-0700</b>



## ASSIGNMENT LIST (ICS 204)

<b>1. Incident Name:</b> WIND COMPLEX		<b>2. Operational Period:</b> Date From: 10/11/17    Date To: 10/12/17 Time From: 0700    Time To: 0700				<b>3.</b> Branch: <b>II - Lobo</b> Div/Group: <b>B</b> <b>Bravo</b>	
<b>4. Operations Personnel:</b> Operations Section Chief: <b>Charlie Blankenheim</b> Night Ops: <b>Mike Inman</b> Branch Director: <b>Eric Schwab</b> Branch Safety: <b>Steve Walker</b> Division/Group Supervisor: <b>(12-Hour)</b>							
<b>5. Resources Assigned:</b>		<b>** Resources Below in Bold are 12 Hour **</b>				Reporting Location, Special Equipment, Remarks, Notes, and Information Time                      Location	
Resource Identifier	ALS	Leader	Personnel	Request #			
STC XTB 4234C		Osburn, Kenneth	22	E-212	0700-0700	DP 1	
ENG NEU 2351		Marshall, Travis J	3	E-217	0700-0700	DP 1	
ENG NEU 2361		Wilson, Richard	3	E-225	0700-0700	DP 1	
ENG NEU 2372		Romero, Rueben	3	E-228	0700-0700	DP 1	
<i>ENG 264</i>				*	<i>0700-0700</i>	<i>DP 1</i>	
<i>ENG 313</i>				*	<i>0700-0700</i>	<i>DP 1</i>	
<i>ENG RAR 5960</i>				*	<i>0700-0700</i>	<i>DP 1</i>	
<i>ENG 6461</i>				*	<i>0700-0700</i>	<i>DP 1</i>	
W/T PNV 43		Bertolucci, Dennis	1	E-59	0700-0700	DP 1	
<i>W/T PVT E-19 GOMES</i>		<i>Klar, Randy</i>	2	<i>E-19*</i>	<i>0700-0700</i>	<i>DP 1</i>	
FEMP GREGORY O-178	ALS	Gregory, Christopher M	1	O-178	0700-0700	DP 1	
FEMT DEMERS O-167		Demers, Corey Allen	1	O-167	0700-0700	DP 1	
<b>6. Work Assignments:</b> Continue to build and improve lines Conduct damage assessment							
<b>7. Special Instructions:</b> <i>* ALL Resources that are Italicized MUST report to Check-In to receive their new Request #'s *</i> FEMP GREGORY / FEMT DEMERS shared throughout Branch II							
<b>8. Communications</b> (radio and/or phone contact numbers needed for this assignment):							
Name	Ch	Function	Rx Freq	Rx Tone	Tx Freq	Tx Tone	Notes
CDF C2	1, 2, 3	COMMAND	151.2650	103.5 (T8)	159.3300	SEE ICS 205	Tone 9, Tone 11, Tone 16
CDF T24	5	TACTICAL	151.3175	192.8 (T16)	151.3175	192.8 (T16)	
CALCORD	13	MEDICAL	156.0750	156.7 (T6)	156.0750	156.7 (T6)	
SEE ICS 205	14, 15	AIR TO GROUND					CDF T15, CDF T22
GUARD	16	EMERGENCY	168.6250	0.0	168.6250	110.9 (T1)	
<b>9. Prepared by: Name:</b> Keith Tsudama		Pos/Title: RESL		Signature:			
ICS 204		Date/Time: 10/10/2017 2300 hours					





















## ASSIGNMENT LIST (ICS 204)


<b>1. Incident Name:</b> WIND COMPLEX		<b>2. Operational Period:</b> Date From: 10/11/17    Date To: 10/12/17 Time From: 0700    Time To: 0700				<b>3.</b>  Branch: <b>VII - La Porte</b>  Div/Group: <b>Q</b>  <b>Quebec</b> <b>Page 1 of 2</b>	
<b>4. Operations Personnel:</b> Operations Section Chief: <b>Charlie Blankenheim</b> Night Ops: <b>Mike Inman</b> Branch Director: <b>Garrett Sjolund</b> Branch Safety: Clinton Hamilton Division/Group Supervisor: <b>Darren Bakken / Randy Northrup (T)</b>							
<b>5. Resources Assigned:</b>		<b>** Resources Below in Bold are 12 Hour **</b>				Reporting Location, Special Equipment, Remarks, Notes, and Information Time                      Location	
Resource Identifier	ALS	Leader	Personnel	Request #			
STA XED 4076A		Lohan, Paul	19	E-182	0700-0700	DP 20	
STA XPL 4130A	ALS	Midtling, Brian		E-181	0700-0700	DP 20	
STC SHU 9240C		Whitehurst, Timothy R	18	E-209	0700-0700	DP 20	
STC XCA 4062C		Konklin, Craig S	16	E-254	0700-0700	DP 20	
STG NEU 9235G				*	0700-0700	DP 20	
STG AEU 9273G		Loveless, Jeff	27	*	0700-0700	DP 20	
CRW AEU GRB 5				*	0700-0700	DP 20	
STG					0700-0700	DP 20	
STG					0700-0700	DP 20	
DOZ PVT E-9 EMERSON		Emerson, Mel	2	E-9*	0700-0700	DP 20	
DOZ PVT E-26 LESTER			2	E-26*	0700-0700	DP 20	
DOZ PVT E-27 GRAHAM		Clayton, Graham	2	E-27*	0700-0700	DP 20	
DOZ PNF 3		Lamb, Derek	2	E-12*	0700-0700	DP 20	
W/T PVT E-38 NORM PAUL		Sasser, Scott	2	E-38*	0700-0700	DP 20	
W/T PVT E-127 ALGERINE		Carne, Jim	2	E-127	0700-0700	DP 20	
W/T PVT E-130 HARRIS		Zuurbier, John	1	E-130	0700-0700	DP 20	
W/T PVT E-131 HARRIS		Enlow, Clancy	1	E-131	0700-0700	DP 20	
HEQB RUSHDOONY O-286		Rushdoony, Issac	1	O-286	0700-0700	DP 20	
<b>6. Work Assignments:</b> Continue to build and improve lines Conduct damage assessment							
<b>7. Special Instructions:</b> <i>* ALL Resources that are Italicized MUST report to Check-In to receive their new Request #'s *</i> FEMP VASQUEZ / FEMT FERREIRA shared throughout Branch VII							
<b>8. Communications</b> (radio and/or phone contact numbers needed for this assignment):							
Name	Ch	Function	Rx Freq	Rx Tone	Tx Freq	Tx Tone	Notes
CDF C2	1, 2, 3	COMMAND	151.2650	103.5 (T8)	159.3300	SEE ICS 205	Tone 9, Tone 11, Tone 16
NIFC T5	10	TACTICAL	166.7250	0.0	166.7250	0.0	
CALCORD	13	MEDICAL	156.0750	156.7 (T6)	156.0750	156.7 (T6)	
SEE ICS 205	14, 15	AIR TO GROUND					CDF T15, CDF T22
GUARD	16	EMERGENCY	168.6250	0.0	168.6250	110.9 (T1)	
<b>9. Prepared by: Name:</b> Keith Tsudama		Pos/Title: RESL		Signature: 			
ICS 204		Date/Time: 10/10/2017 2300 hours					



## ASSIGNMENT LIST (ICS 204)

<b>1. Incident Name:</b> WIND COMPLEX		<b>2. Operational Period:</b> Date From: 10/11/17    Date To: 10/12/17 Time From: 0700    Time To: 0700				<b>3.</b>  Branch: <b>VII - La Porte</b>  Div/Group: <b>S</b>  <b>Sierra</b>	
<b>4. Operations Personnel:</b> Operations Section Chief: <b>Charlie Blankenheim</b> Night Ops: <b>Mike Inman</b> Branch Director: <b>Garrett Sjolund</b> Branch Safety: Clinton Hamilton Division/Group Supervisor: <b>Mike Stewart</b>							
<b>5. Resources Assigned:</b>		<b>** Resources Below in Bold are 12 Hour **</b>				Reporting Location, Special Equipment, Remarks, Notes, and Information Time                      Location	
Resource Identifier	ALS	Leader	Personnel	Request #			
STA OES 4824A		Hubbard, Kris	22	E-207	0700-0700	DP 20	
ENG NEU 2362		Rouse, Andrew	4	E-223	0700-0700	DP 20	
ENG NEU 2373		Mcconnell, Micah	3	E-218	0700-0700	DP 20	
ENG NEU 2374		Radford, Phillip A	3	E-215	0700-0700	DP 20	
ENG NEU 2382		Baker, Jacob	3	E-227	0700-0700	DP 20	
ENG NEU 2392		Hollingshead, Justin	3	E-220	0700-0700	DP 20	
STG SHU 9241G		<i>Covert, Don</i>		*	0700-0700	DP 20	
STG					0700-0700	DP 20	
<i>DOZ PVT E-7 Vincini</i>		<i>Vincini, Tony</i>	2	<i>E-7*</i>	0700-0700	DP 20	
<i>DOZ PVT E-8 KK</i>		<i>Kramer, Kurt</i>	2	<i>E-8*</i>	0700-0700	DP 20	
<i>DOZ PVT E-18 Forkner</i>		<i>Forkner, Brian</i>	2	<i>E-18*</i>	0700-0700	DP 20	
<b>DOZ PNF 2</b>		<b>Collins, David</b>	<b>1</b>	<b>E-11*</b>	<b>0700-1900</b>	<b>DP 20</b>	
<i>W/T PVT E-43 Spit Fire</i>		<i>Lewis, Jake</i>	2	<i>E-43*</i>	0700-0700	DP 20	
W/T PVT E-129 Kulikov			2	E-129	0700-0700	DP 20	
W/T PVT E-132 Harris		Mcgary, John	2	E-132	0700-0700	DP 20	
W/T PVT E-133 Alan's Water		Logue, Ricki	2	E-133	0700-0700	DP 20	
HEQB					0700-0700	DP 20	
<b>6. Work Assignments:</b> Continue to build and improve lines Conduct damage assessment							
<b>7. Special Instructions:</b> <i>* ALL Resources that are Italicized MUST report to Check-In to receive their new Request #'s *</i> FEMP VASQUEZ / FEMT FERREIRA shared throughout Branch VII							
<b>8. Communications</b> (radio and/or phone contact numbers needed for this assignment):							
Name	Ch	Function	Rx Freq	Rx Tone	Tx Freq	Tx Tone	Notes
CDF C2	1, 2, 3	COMMAND	151.2650	103.5 (T8)	159.3300	SEE ICS 205	Tone 9, Tone 11, Tone 16
NIFC T5	10	TACTICAL	166.7250	0.0	166.7250	0.0	
CALCORD	13	MEDICAL	156.0750	156.7 (T6)	156.0750	156.7 (T6)	
SEE ICS 205	14, 15	AIR TO GROUND					CDF T15, CDF T22
GUARD	16	EMERGENCY	168.6250	0.0	168.6250	110.9 (T1)	
<b>9. Prepared by: Name:</b> Keith Tsudama		Pos/Title: RESL		Signature: 			
ICS 204		Date/Time: 10/10/2017 2300 hours					

## ASSIGNMENT LIST (ICS 204)

<b>1. Incident Name:</b> WIND COMPLEX		<b>2. Operational Period:</b> Date From: 10/11/17      Date To: 10/12/17 Time From: 0700      Time To: 0700			<b>3.</b>  Branch: <b>VII - La Porte</b>  Div/Group: <b>U</b>  <b>Uniform</b>		
<b>4. Operations Personnel:</b> Operations Section Chief: <b>Charlie Blankenheim</b> Night Ops: <b>Mike Inman</b> Branch Director: <b>Garrett Sjolund</b> Branch Safety: Clinton Hamilton Division/Group Supervisor: <b>Mark Rotlisberger</b>							
<b>5. Resources Assigned:</b>		<b>** Resources Below in Bold are 12 Hour **</b>			Reporting Location, Special Equipment, Remarks, Notes, and Information Time      Location		
Resource Identifier	ALS	Leader	Personnel	Request #			
STA XTB 4235A		Reid, Jim	21	E-183	0700-0700	DP 20	
ENG NEU 2371		<i>Harcourt, Wesley</i>	3	<i>E-58*</i>	0700-0700	DP 20	
ENG NEU 2381			3	<i>E-164*</i>	0700-0700	DP 20	
ENG NEU 2395		Lee, John	3	E-163	0700-0700	DP 20	
ENG 54				*	0700-0700	DP 20	
<b>ENG TNF 341</b>		<b>Holloway, Christopher James</b>	<b>7</b>	<b>E-216</b>	<b>0700-1900</b>	<b>DP 20</b>	
CRW NEU WAR 4				*	0700-0700	DP 20	
CRW NEU WAR 5				*	0700-0700	DP 20	
<b>FEATHER RIVER IHC</b>				*	<b>0700-1900</b>	<b>DP 20</b>	
DOZ PVT E-5				<i>E-5*</i>	0700-0700	DP 20	
<b>DOZ ENF 3</b>				<b>E-13</b>	<b>0700-1900</b>	<b>DP 20</b>	
W/T PVT E-134 EL DORADO SUPP		Starks, Erik	1	E-134	0700-0700	DP 20	
W/T PVT E-135 J & M		Duncan, Jack	2	E-135	0700-0700	DP 20	
W/T PVT E-137 DAVIS		Franks, Steve	2	E-137	0700-0700	DP 20	
W/T PVT E-138 DAVIS		Davis, Donald	2	E-138	0700-0700	DP 20	
HEQB					0700-0700	DP 20	
HEQB					0700-0700	DP 20	
<b>6. Work Assignments:</b> Continue to build and improve lines Conduct damage assessment							
<b>7. Special Instructions:</b> <i>* ALL Resources that are Italicized MUST report to Check-In to receive their new Request #'s *</i> FEMP VASQUEZ / FEMT FERREIRA shared throughout Branch VII							
<b>8. Communications</b> (radio and/or phone contact numbers needed for this assignment):							
Name	Ch	Function	Rx Freq	Rx Tone	Tx Freq	Tx Tone	Notes
CDF C2	1, 2, 3	COMMAND	151.2650	103.5 (T8)	159.3300	SEE ICS 205	Tone 9, Tone 11, Tone 16
NIFC T6	11	TACTICAL	166.7750	0.0	166.7750	0.0	
CALCORD	13	MEDICAL	156.0750	156.7 (T6)	156.0750	156.7 (T6)	
SEE ICS 205	14, 15	AIR TO GROUND					CDF T15, CDF T22
GUARD	16	EMERGENCY	168.6250	0.0	168.6250	110.9 (T1)	
<b>9. Prepared by: Name:</b> Keith Tsudama		Pos/Title: RESL		Signature: 			
ICS 204		Date/Time: 10/10/2017 2300 hours					









<b>MEDICAL PLAN</b> ICS 206		1. INCIDENT NAME <b>Wind Complex</b>	2. DATE PREPARED 10-10-17	3. TIME PREPARED 2100 hrs	4. OPERATIONAL PERIOD 10/11/17 – 10/12/17 0700 - 0700					
<b>5. INCIDENT MEDICAL AID STATIONS</b>										
MEDICAL AID STATIONS		LOCATION			PARAMEDICS					
					YES		NO			
Medical Supplies		Base Camp					X			
MERT w/treatment		Base Camp					X			
<b>6. TRANSPORTATION</b>										
<b>A. AMBULANCE SERVICES</b>										
NAME		LOCATION		PHONE		PARAMEDICS				
						YES		NO		
Sierra Nevada Ambulance		155 Glasson Way, Grass Valley, CA		(530) 274-6001		X				
Bi-County Ambulance		1700 Poole Blvd, Yuba City, CA		(530) 674-2780		X				
GUARD 840 24hr hoist		Mather Air Base (Local ECC)		(650) 245-1715		X				
CALSTAR		13750 Lincoln Way, Auburn, CA		(888) 692-6692		X				
<b>B. INCIDENT AMBULANCES</b>										
NAME		LOCATION			PARAMEDICS					
					YES		NO			
Bi-County Ambulance M-114		Fire Station 91 (Loma Rica) LaPorte-Cascade Fire			X					
Sierra Nevada Ambulance		911 Contract for McCourtney and Lobo Fires			X					
<b>7. HOSPITALS</b>										
NAME	ADDRESS		TRAVEL TIME		PHONE		HELIPAD		BURN CENTER	
			AIR	GRND			YES	NO	YES	NO
Sierra Nevada Hospital	155 Glasson Way, Grass Valley		10	40	(530) 274-6001		X			X
Sutter Roseville Medical Center	1 Medical Plaza Dr, Roseville		25	90	(916) 781-1811		X			X
Rideout Hospital	726 4 <sup>th</sup> St, Marysville		15	45	(530) 749-4300			X		X
UC Davis Medical Center	2315 Stockton Blvd, Sacramento		45	120	(916) 734-3636		X		X	
<b>8. MEDICAL EMERGENCY PROCEDURES</b>										
<b>EMERGENCY FREQUENCY:</b> AIR GUARD  <b>LINE EMERGENCY:</b> Crew Supervisor will contact Division Supervisor with patient complaint/condition and location. <ul style="list-style-type: none"> <li>Division/Group Supervisor contacts: <ol style="list-style-type: none"> <li>Closest EMS resource</li> <li>Communications</li> </ol> </li> <li>Communications contacts: <ol style="list-style-type: none"> <li>Ground or Air ambulance as requested</li> <li>Operations</li> <li>Safety</li> <li>Medical Unit</li> </ol> </li> <li>Division Supervisor or designee will serve as point of contact and run medical emergency on assigned channel. <ol style="list-style-type: none"> <li>A pre-assigned tactical frequency (i.e. CALCORD) should be used for IW1 and only for duration of need.</li> </ol> </li> <li>Communications will clear command channel for emergency traffic as needed and only for duration of need.</li> </ul> <b>CAMP EMERGENCY:</b> Contact Communications for 911 response following local procedures. <ul style="list-style-type: none"> <li>Communications contacts: <ol style="list-style-type: none"> <li>Medical Unit Leader <ul style="list-style-type: none"> <li>-Crew Supervisor</li> <li>-Logistics</li> <li>-Comps/Claims</li> </ul> </li> <li>Safety</li> </ol> </li> </ul>					<b>INJURY REPORTING PROCEDURES</b>  NATURE OF INJURY _____ LOCATION OF PATIENT _____ POINT OF CONTACT _____ TRANSPORTATION REQUESTED BY: AIR ___ GROUND ___ POINT OF PICKUP _____ LAT _____ LONG _____ PATIENT UNIT ID _____ IS AN EMT WITH PATIENT: YES ___ NO ___ AGE _____ SEX: MALE ___ FEMALE ___					
<b>ALL EMERGENCIES---Secure the area and identify witnesses for later investigation. Keep an accurate log of events.</b>										
<b>ICS 206</b> (Rev 03/12)		9. PREPARED BY: (Medical Unit Leader) Justin VanderHulst (MEDL)			10. REVIEWED BY: (Safety Officer)					

# ICS 205 - INCIDENT RADIO COMMUNICATIONS PLAN

**1. Incident Name:** **WIND COMPLEX**

**2. Date/Time Prepared** Date: 10/10/2017 Time: 1800 **3. Operational Period:** Date From: 10/11/2017 Date To: 10/12/2017  
Time From: 0700 Time To: 0700

**4. Communications** **Controlled Unclassified Information//Basic**

Ch#	Function	Name	Assigned To	Rx Freq	Rx Tone	Tx Freq	Tx Tone	Notes
1	COMMAND	CDF CMD 2	INCIDENT WIDE	151.2650	103.5 (T8)	159.3300	100.0 (T9)	TONE 9 - OREGON PEAK
2	COMMAND	CDF CMD 2	INCIDENT WIDE	151.2650	103.5 (T8)	159.3300	114.8 (T11)	TONE 11 - ALDER SPRINGS
3	COMMAND	CDF CMD 2	INCIDENT WIDE	151.2650	103.5 (T8)	159.3300	192.8 (T16)	TONE 16 - WOLF MTN
4	TACTICAL	CDF TAC 1	DIV A	151.2575	192.8 (T16)	151.2575	192.8 (T16)	
5	TACTICAL	CDF TAC 24	BRANCH II DIV B & D	151.3175	192.8 (T16)	151.3175	192.8 (T16)	
6	TACTICAL	CDF TAC 31	BRANCH II DIV F	159.3825	192.8 (T16)	159.3825	192.8 (T16)	
7	TACTICAL	VFIRE 24	BRANCH V DIV H & J	154.2725	156.7 (T6)	154.2725	156.7 (T6)	
8	TACTICAL	VFIRE 25	BRANCH V DIV K & M	154.2875	156.7 (T6)	154.2875	156.7 (T6)	
9	TACTICAL	VFIRE 26	BRANCH V DIV O	154.3025	156.7 (T6)	154.3025	156.7 (T6)	
10	TACTICAL	NIFC TAC 5	BRANCH VII DIV Q & S	166.7250	0.0	166.7250	0.0	
11	TACTICAL	NIFC TAC 6	BRANCH VII DIV U	166.7750	0.0	166.7750	0.0	
12								
13								
14	EMS COORDINATION	CALCORD	INCIDENT WIDE	156.0750	156.7 (T6)	156.0750	156.7 (T6)	
15	AIR TO GROUND	CDF T15	INCIDENT WIDE	159.2700	192.8 (T16)	159.2700	192.8 (T16)	ALL BRANCHES IN COMPLEX
16	EMERGENCY ONLY	AIR GUARD	INCIDENT WIDE	168.6250	0.0	168.6250	110.9 (T1)	GPH/DPH, 16 CH RADIOS
17								
18								
19								
20	EMERGENCY ONLY	AIR GUARD	INCIDENT WIDE	168.6250	0.0	168.6250	110.9 (T1)	GPH/DPH CMD, 20 CH RADIOS

**5. Special Instructions** **Controlled Unclassified Information//Basic**

Use the ICS 205 to reference and to correlate with the ICS 204's depending on your work assignments

**6. Prepared by (Communications Unit Leader):** Name: John Aguilera, COML IMT #2  
Signature:   
Date/Time: 10/10/17 1800

# ***TRAINING SPECIALIST MESSAGE***

A Training Specialist is now on the incident.

## ***ALL ASSIGNED TRAINEES***

working on Position Task Books will need to register with the Incident Training Specialist in order to receive proper credit for your assignment.

The Training Specialist is available immediately following the morning Operations Briefing.  
Location: Red Building, next to check-in

## **TRAINING SPECIALIST**

Claudia Soiza  
Cell-(949)632-7813

**Incident Trainee/Trainer Data Form  
Wind Complex CA-NEU 026295**

Training Specialist: Claudia Soiza      949.632.7813

- All Incident trainees, including those on Firefighting Modules at your earliest opportunity complete this form and see the Training Specialist.
- Prior to or as you process through DEMOB, remember to close your training package. To close your training package bring: 1) A performance rating from your trainer. (ICS 225)  
2) Your task book that has as many entries as possible by your Trainer.

**Trainee Data**

Trainee Name: \_\_\_\_\_ ICS Trainee Position: \_\_\_\_\_

Request # (A,C,E, or O): \_\_\_\_\_ Agency Designator ( Ex. CA-RRU): \_\_\_\_\_

Ordered as Trainee? Y N      Priority Trainee \_\_\_\_ Local Forest Trainee \_\_\_\_ IMT Trainee

Date Assigned: \_\_\_\_\_ Cell / Contact # While on Incident: \_\_\_\_\_

---

**Training Records Mailed To: (Fire Chief, Training Officer):**

Name: \_\_\_\_\_ Title \_\_\_\_\_

Name of Agency/Unit: \_\_\_\_\_

Agency/Unit Address: \_\_\_\_\_

City: \_\_\_\_\_ State: \_\_\_\_ Zip Code: \_\_\_\_\_ Phone: \_\_\_\_\_

---

**Trainee Prerequisites**

1. Possesses valid Qualification Card or agency certification card?      \_\_\_ Yes \_\_\_ No

2. Trainee has current position task book issued by home unit?      \_\_\_ Yes \_\_\_ No

Current Task Book Progress (Circle)    0%    25%    50%    75%    90%

Priority Open Task in PTB (What do you need to accomplish on this incident?)

---

**Trainer/Evaluator Data**

Trainer / Evaluator Name: \_\_\_\_\_ ICS position on fire: \_\_\_\_\_

Home Unit: \_\_\_\_\_ Agency Designator (Ex CA-RRU): \_\_\_\_\_

Request # (A,C,E,O): \_\_\_\_\_

Work Address: \_\_\_\_\_

City: \_\_\_\_\_ State: \_\_\_\_\_ Zip Code: \_\_\_\_\_

Cell / Contact While on Incident: \_\_\_\_\_



## WIND COMPLEX FINANCE MESSAGE

### COMP / CLAIMS

- Vehicles rented by CAL FIRE are considered department vehicles
- All accident reporting procedures must be followed, including reporting the accident to COMP/CLAIMS and SAFETY
- All required forms and documentation shall be completed and brought to COMP / CLAIMS

### SHIFT TICKETS

- DIVS and OPBD must complete shift tickets for all hired equipment, including runners and fallers
- Turn completed shift tickets into **TIME UNIT** daily

### OFF SITE FEEDING

- Resources staying in Rocklin or Roseville have authorization to feed off site, dinner only
- Follow Per diem rates, make the purchase and bring copies of receipts and AO 341 into Finance
- All other resources must feed in Base Camp

### HIRED EQUIPMENT VENDORS

- Please bring your agreements into the TIME UNIT to start the documentation process

### FEDERAL TIME KEEPERS

- Onsite and located in the Finance shop

### FINANCE CONTACTS

- **Comp/Claims 24/7 Phone: 925-407-6363**
- **Cal OES Rep, Chief Zander: 916-712-6771**
- **Finance Section Chief, Bill Winter, 805-903-3491**
- **Deputy Finance Section Chief, Dale Barnett, 530-524-5623**

# SHIFT TICKET EXAMPLE

EMERGENCY SHIFT TICKET and EVALUATION FORM					Contractor Name	
Incident or Project Name <b>Wind complex</b>		Incident Number <b>CANEU 26295</b>	Request Number <b>E# 123</b>		Contractor Name <b>DOZER DUDE</b>	
Operator #1 <b>Chucke Carroll</b>		Operator #2 <b>Bill Winter</b>				
Agreement Number <b>XXX - 000000 - 00</b>					Operator Furnished By: <input checked="" type="checkbox"/> Contractor <input type="checkbox"/> Government	
Equipment Make <b>CAT</b>		Equipment Model / Type <b>D6XM</b>			Operating Supplies Furnished By: <input checked="" type="checkbox"/> Contractor <input type="checkbox"/> Government	
Serial Number <b>111111</b>		Licence Number <b>111111</b>				
Equipment Use (Circle) <b>Hours</b> Days / Miles					Equipment Status <input checked="" type="checkbox"/> Inspected <input checked="" type="checkbox"/> Under Agreement <input type="checkbox"/> Released by Government <input type="checkbox"/> Withdrawn by Contractor	
Date Mo / Day	Start	Stop	Work	Assignment		
8/3	0700	2400	17	DIV M		
8/4	0001	0700	7	DIV M		
Vendor Rating					Govt. Rep. Name and Position - PRINT <b>Jason Marsh</b>	
Met Performance Expectations					Govt. Rep. Signature <i>Jason Marsh</i>	
Equipment in Safe Working Condition					Contractor Signature <i>Chucke Carroll</i>	
Operator Skill Level					Date <b>08/04/15</b>	
Operates Safely					Time <b>0800</b>	
Operator's Cooperation Level					Remarks/Comments ** <b>TWO OPERATORS NO DAMAGE/ NO CLAIMS</b>	
Overall Performance					CALFIRE 297 (Rev 3-2011)	

\* NOTE: Any rating of POOR requires an explanation in Comment Section.  
 \*\*Final evaluation or for more documentation, use an ICS Form 230 or equivalent.

Pink - Finance      Blue - Home Unit HE Coordinator      Yellow - Vendor      White - Govt Representative

EMERGENCY SHIFT TICKET and EVALUATION FORM					Contractor Name	
The responsible Government Officer will complete this form each shift						
Incident or Project Name <b>PONDEROSA FIRE</b>		Incident Number <b>CABTU013737</b>	Request Number <b>E # Here</b>		Contractor Name <b>EXCAVATOR COMPANY</b>	
Operator #1 <b>Bob Smith</b>		Operator #2				
Agreement Number <b>XXX - 000000 - 00</b>					Operator Furnished By: <input checked="" type="checkbox"/> Contractor <input type="checkbox"/> Government	
Equipment Make <b>CAT</b>		Equipment Model / Type <b>EXCAVATOR F900</b>			Operating Supplies Furnished By: <input checked="" type="checkbox"/> Contractor <input type="checkbox"/> Government	
Serial Number <b>1XP3ESMP14239012</b>		Licence Number <b>9999999</b>				
Equipment Use (Circle) <b>Hours</b> Days / Miles					Equipment Status <input checked="" type="checkbox"/> Inspected <input checked="" type="checkbox"/> Under Agreement <input type="checkbox"/> Released by Government <input type="checkbox"/> Withdrawn by Contractor	
Date Mo / Day	Start	Stop	Work	Assignment		
8/3	0001	700	7	OFF SHIFT		
8/3	0700	1900	12	DIV M		
8/3	1900	2400	5	OFF SHIFT		
Vendor Rating					Govt. Rep. Name and Position - PRINT <b>Jason Marsh</b>	
Met Performance Expectations					Govt. Rep. Signature <i>Jason Marsh</i>	
Equipment in Safe Working Condition					Contractor Signature <i>Bob Smith</i>	
Operator Skill Level					Date <b>08/04/15</b>	
Operates Safely					Time <b>0800</b>	
Operator's Cooperation Level					Remarks/Comments ** <b>1 OPERATOR NO DAMAGE/ NO CLAIMS</b>	
Overall Performance					CALFIRE 297 (Rev 3-2011)	

\* NOTE: Any rating of POOR requires an explanation in Comment Section.  
 \*\*Final evaluation or for more documentation, use an ICS Form 230 or equivalent.

Pink - Finance      Blue - Home Unit HE Coordinator      Yellow - Vendor      White - Govt Representative

**Turn shift tickets into Finance.**



# WIND COMPLEX PUBLIC INFORMATION



**Incident Information Line: 503-823-4083**

Media Line: 916-203-4153

## **MEDIA**

California State Penal Code Section 409.5(d) allows the news media to enter scenes of disaster, riot, or civil disturbance. Properly identified members of the news media should not be restricted from entering the locations specified within the code, even if the area presents a danger to them. Media members should be advised of the nature of possible danger. Members of the media do not have the right to access crime scenes or any area where their presence may interfere with incident operations, mitigation or evidence collection.

- The media may only access private property with the property owner's permission. Fire personnel cannot provide members of the media with authorization to enter private property.
- If approached and questioned by the media and/or the public, talk about your assignment or task at hand. If need be, direct the questioning party to the incident PIO.
- Do not speculate or give opinions
- There is no such thing as an "off the record" comment.

## **CAL FIRE SOCIAL MEDIA POLICY (Social Media 0691)**

Social Media is increasingly being used by public agencies and the media as well as the public. This form of communication continues to grow rapidly in order to supply the public's desire for instant information gratification. All personnel assigned to a CAL FIRE incident will adhere to the CAL FIRE Social Media Policy. Further information about the CAL FIRE Social Media Policy can be obtained from the Information Officer. If you are uncertain, please ask. **Do not post:**

- Inappropriate information, pictures or videos
- Opinions regarding the incident or policy
- Endorsements of any kind

## **PICTURES AND VIDEO OF INCIDENT**

We are in a new era of media. Media no longer means the news/broadcast industry but now refers to anyone that has the capability to shoot video and or photographs and post them onto social media in a matter of minutes. Unfortunately we have seen some instances of video or photographs that have depicted unsafe, unprofessional or embarrassing circumstances which are a serious breach of ethics. When this happens it reflects poorly on all that are attached to this incident. Posting an inappropriate video, photo or blog comment could have unwanted effects. It may be unsafe to shoot photos or video and a firefighter who is concentrating on a camera can't be looking up, down and all around.

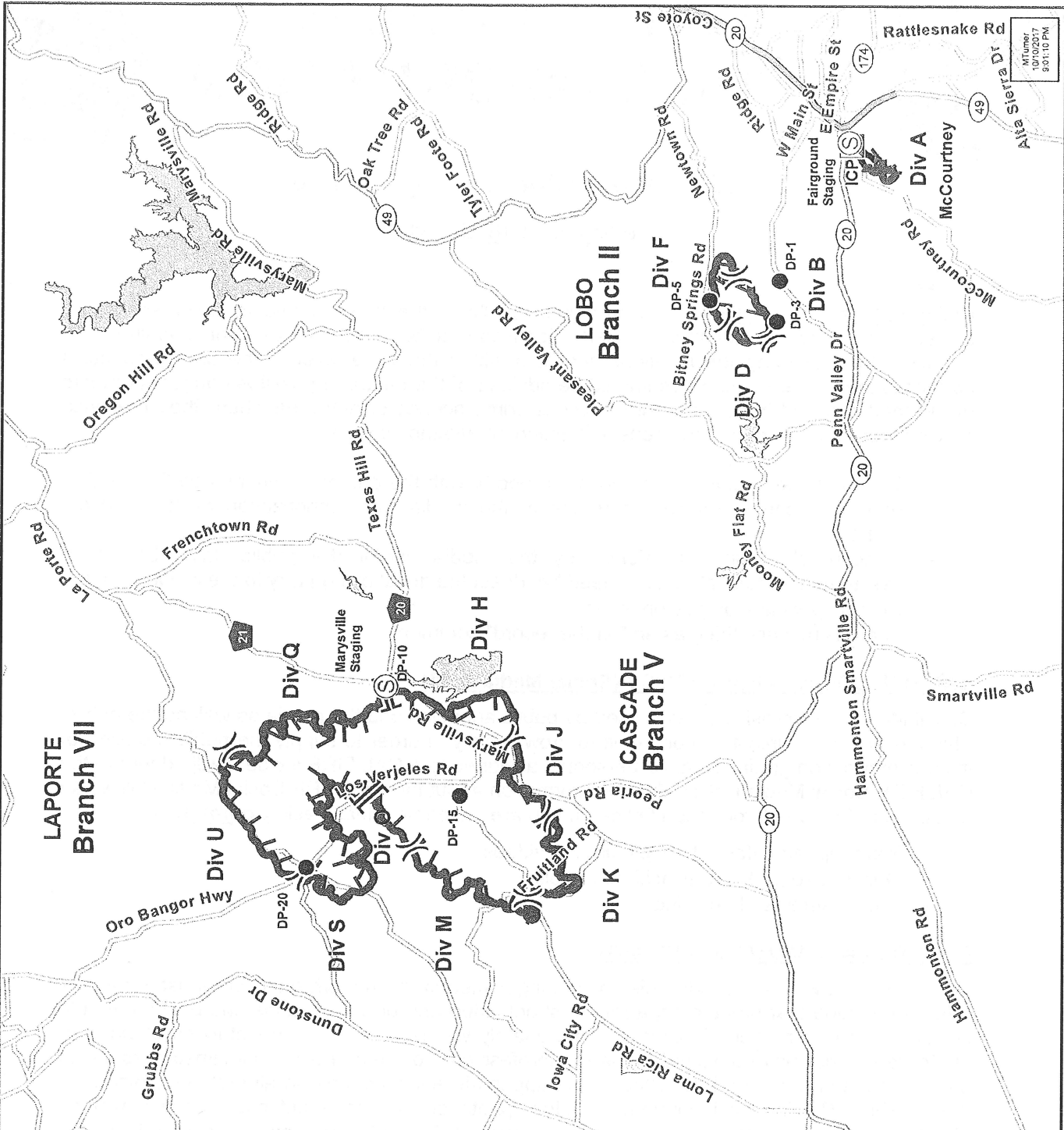
## **LOST AND FOUND**

The Information staff will manage *Lost and Found* items for the incident. If you have lost an item, leave your contact information and what you have lost at the Information trailer. If you have found an item on the incident, bring the item to the Information trailer.

## **MAIL SERVICE**

The Information staff will assist you in mailing and receiving letters and packages.

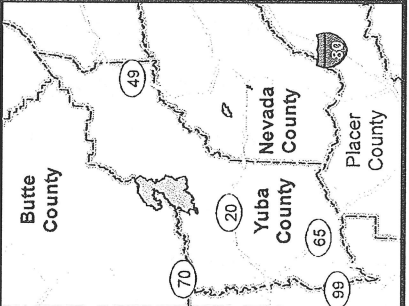
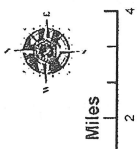
MTuner  
10/10/2017  
9:01:10 PM



**TRAVEL MAP**  
**Wind Complex**  
 CA-NEU-026295  
 10/11/2017

- Drop Point
- Incident Command Post
- Staging Area
- Division
- Branch

- Uncontrolled Fire Edge
- Completed Line
- Interstates
- Highways
- Major Roads
- Water Features





# NEW WIND COMPLEX BASE CAMP MAP PART 2

