

* Corrected *

WIND COMPLEX

CA-NEU-026295

INCIDENT ACTION PLAN



OPERATIONAL PERIOD

10/13/2017 - 10/14/2017

0700 - 0700



INCIDENT OBJECTIVES (ICS 202)

1. Incident Name: WIND COMPLEX	2. Operational Period:	Date From: 10/13/2017	Date To: 10/14/2017
		Time From: 0700	Time To: 0700

3. Objective(s):

Management Objectives:

- Provide for emergency personnel and public safety at all times.
- Protect property, improvements, and infrastructure.
- Ensure repopulation takes place in a quick, efficient, and effective manner.
- Ensure coordinated, timely and accurate release of public information.
- Foster and maintain relationships with all cooperators and stakeholders.
- Protect economic, natural, cultural and heritage resources.
- Maintain fiscal accountability and keep costs commensurate with values at risk.

Control Objectives:

Division A - McCourtney Incident:

- Keep the fire within the established perimeter

Branch II - Lobo Incident:

- Keep the fire North of Rough and Ready Highway
- Keep the fire South of Bitney Springs Road
- Keep the fire East of Lake Wildwood Estates
- Keep the fire West of the intersection of Bitney Springs Road and Newtown Road

Branch V - Cascade Incident / Branch VII - LaPorte Incident:

- Keep the fire North of Powerline Right of Way
- Keep the fire South of LaPorte Road
- Keep the fire East of Dunstone Drive
- Keep the fire West of Willow Glen Road and Collins Reservoir

General Situational Awareness:

Long shifts, draw down of resources, high likelihood for strong winds and new IA starts.

5. Site Safety Plan Required? Yes No

Approved Site Safety Plan(s) Located at:

6. Incident Action Plan

- | | | | |
|--|---|---|--|
| <input checked="" type="checkbox"/> ICS 203 | <input checked="" type="checkbox"/> ICS 204 | <input type="checkbox"/> WUI Guidelines | <input checked="" type="checkbox"/> Finance Message |
| <input checked="" type="checkbox"/> Weather Forecast | <input checked="" type="checkbox"/> ICS 220 | <input checked="" type="checkbox"/> Suppression Repair Plan | <input checked="" type="checkbox"/> PIO Message |
| <input checked="" type="checkbox"/> Fire Behavior | <input checked="" type="checkbox"/> ICS 206 | <input type="checkbox"/> Logistics Message | <input checked="" type="checkbox"/> Transportation Map |
| <input checked="" type="checkbox"/> Safety Message | <input checked="" type="checkbox"/> ICS 205 | <input checked="" type="checkbox"/> Demob Plan | <input checked="" type="checkbox"/> Base Camp Map |
| <input checked="" type="checkbox"/> ICS-215a | <input type="checkbox"/> Firing Ops Checklist | <input checked="" type="checkbox"/> Training Specialist | <input checked="" type="checkbox"/> ICS 214 |

7. Prepared By: Andy Murphy

Position/Title: PSC

Signature: 

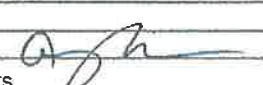
8. Approved by Incident Commander:

Glenn Patterson

Signature: _____

ICS 202

ORGANIZATION ASSIGNMENT LIST (ICS 203)

1. Incident Name: WIND COMPLEX		2. Operational Period: Date From: 10/13/2017 Date To: 10/14/2017	
		Time From: 0700 Time To: 0700	
3. Incident Commander(s) and Command Staff:		7. Operation Section:	
IC/UC's	Glenn Patterson / Dave Allen (T)	Chief	Charlie Blankenheim <i>Mike Inman</i>
Deputy	Ron Myers	Deputy	Mark Brunton
Safety Officer	Steve Walker / Clinton Hamilton (T)	Night Ops	Mike Inman <i>Abdul Ahmad</i>
Information Officer	Ron Oatman / Jeremy Rahn		
Liaison Officer	Mike Martin / <i>John McCammon</i>	Branch	
<i>LE Liaison</i>	<i>Kevin Pack / John Davis</i>	Division/Group	A
		Division/Group	
4. Agency/Organization Representatives:		Branch	II - Lobo
Agency/Organization	Name	Division/Group	B
Yuba County Sheriff	Sgt. Smith	Division/Group	D
Butte County Sheriff	Lt. Smith	Division/Group	F
Nevada County Sheriff	Capt. Pettitt	Division/Group	
Red Cross	Artena Moon	Branch	V - Cascade
C.H.P.	Lt. Steffenson	Division/Group	H
PG&E	Rob Cone	Division/Group	J / K
CDCR	Lt. Hill	Division/Group	M / O
Cal OES	Corey Zander	Division/Group	
Nev. County Animal Evac	Bill Alexander	Branch	VII - LaPorte
Cal Trans	Shelly Pangman	Division/Group	Q
USFS	Shelly Allen	Division/Group	S
CCC	Angel Parga	Division/Group	U
		Division/Group	
		Branch	
5. Planning Section:		Division/Group	Fire Suppression Repair
Chief	Andy Murphy	Division/Group	Jack Harvey
Deputy	Jeff Windham	Branch	
Resource Unit	Keith Tsudama / Andy Hubbs / Roger Noor	Staging Area	Marysville
Situation Unit	Rob Clark / Dan Brown	Staging Area	Fairground
Documentation Unit		Division/Group	
Demobilization Unit	Ryan Villarino	Branch	
GISS	Fred Postler	Division/Group	
FBAN	Todd Hopkins	Division/Group	
IMET	Mike Smith	Division/Group	
Training Tech Spec	Claudia Soiza	Division/Group	
Fire Suppression Repair	Jack Harvey	Air Operations Branch	
		Director:	Rob Sonsteng
6. Logistics Section		Air Support Grp Sup	
Chief	Ken Lowe / Milford Ferguson	Helibase Manager	Byron Vance
Supply Unit	Matt Siebecke		
Facilities Unit	Devon Ellsworth / Scott Irvine	8. Finance/Administration Section:	
Ground Support Unit	Tom Stroing	Chief	Bill Winter / Dale Barnett
Hired Equipment Tech	Jason Marsh	Time Unit	Chucke Carroll / Andre Schmidt (T)
Communications Unit	John Aguilera	Procurement Unit	Jason McDermott / Sandra Jewel (T)
Medical Unit	Matt Lathrop / Justin Vanderhuist	Comp/Claims Unit	Joe Ekblad
Motel Tech Spec	Paul Pumarejo	Cost Unit	Jennifer Fagen / Michelle Patton (T)
Prepared By: Name:	Andy Murphy	Position/Title:	PSC
ICS 203		Date/Time:	10/12/2017 2300 hours
		Signature:	



INCIDENT Weather Forecast

FORECAST NO: 2

NAME OF FIRE: NEU Wind Complex

PREDICTION FOR: FRI Day/Night SHIFT

UNIT: NEU

SHIFT DATE: Oct. 13/14 2017

SIGNED: Mike Smith *Mike Smith*

TIME AND DATE

Incident Meteorologist

FORECAST ISSUED: 1900 10/12/17

...Red Flag warning late tonight through Sunday morning for gusty north winds and low humidity...

WEATHER DISCUSSION: Slightly more moderate conditions are expected today as a weak weather disturbance passes to the north of the region. Although RH values will continue low, humidity through the day will be a little higher under lighter wind conditions. Daytime high temperatures will warm a bit but still remain below normal for this time of year. As the weak weather system digs into the Great Basin Friday night, breezy northeast winds will again develop over the fire area. Most fire areas should see noticeably breezy northeast winds by Saturday morning with only poor humidity recovery being reached during the late night and morning hours. Breezy northeast winds and low RH readings should continue through the day Saturday and even in to early Sunday morning. Lighter winds are expected on Sunday but humidity is expected to be even drier early next week with minimum values dropping to near 10 percent Sunday and Monday.

WEATHER FORECAST:

WEATHER: Fair skies except patchy smoke in the morning under shallow inversions. .

TEMPERATURES: High temperatures 72 to 76.

HUMIDITY: Minimum humidity a little higher at 15-20% after poor overnight recovery of 34-40%

20 FT WINDS:

ABOVE 1000 FT ELEV - Northeast winds 2-5 mph with occasional gusts to 8 mph through about 1000 then west to northwest 2-5 with occasional gusts to 12 mph in the mid to late afternoon.

BELOW 1000 FT ELEV - North 2-5 mph with occasional gusts to 10 mph becoming northwest after about 1000 to 4 to 8 mph with occasional gusts to 12 mph.

STABILITY/INVERSION: Weak morning inversions through about 1000. Generally stable conditions in the afternoon.

OUTLOOK FOR Friday Night: Fair skies. Weak inversions due to increasing winds. Minimum temperatures 47-53. RH recovery at 34-40%. Winds above 1000 feet, becoming north to northeast 2-5 mph by about 2000 increasing through the night becoming northeast 6-10 with occasional gusts to 15-20 mph after midnight and through the morning hours. Winds below 1000 feet, becoming north 2-5 mph by about 2000 increasing through the night becoming north 6-12 with occasional gusts to 16-20 mph after midnight and through the morning hours.

OUTLOOK FOR SATURDAY: Fair skies. High temperatures 77-80. Minimum RH values 10-15%. Winds...Above 1000 feet elevation, Northeast 6-10 occasional gusts to 15-20 mph morning hours turning northwest after 1100 becoming northwest 3-8 mph with gusts to 12 mph. Below 1000 feet, north 6-12 occasional gusts to 16-20 mph turning northwest after about 1100 becoming northwest 5-10 gusts to 15 mph.

EXTENDED FORECAST OUTLOOK FOR SUNDAY: Warm and very dry. Mainly local terrain driven winds.

FIRE BEHAVIOR FORECAST

FORECAST NUMBER: 004	TYPE OF FIRE: Wildfire
FIRE NAME: Wind Complex	OPERATIONAL PERIOD: 10/13/2017 0700-0700
DATE ISSUED: October 12, 2017	TIME ISSUED: 1900
UNIT: CA-NEU-026295	SIGNED: <i>Todd Hopkins</i> Typed/printed: Todd Hopkins (FBAN)

INPUTS

WEATHER SUMMARY: See Attached Spot Weather Forecast
RED FLAG WARNING TONIGHT THROUGH SUNDAY MORNING FOR GUSTY NORTH WINDS AND LOW RH

WEATHER: **Day:** Fair skies except patchy smoke in morning **Night:** Fair skies

TEMPERATURES / HUMIDITY: **Day:** 72-76 F Max Temperature / Min Humidity: 15%-20%
Night: Min Temperature 47-53 F / Max Humidity: 34%-40%

20 FT WINDS: Day: ABOVE 1000 FT ELEV - Northeast winds 2-5 mph with occasional gusts to 8 mph through about 1000 then northwest with occasional gusts to 12 mph

BELOW 1000 FT ELEV - North 2-5 mph with occasional gust to 10 mph becoming northwest after 1000 to 4-8 mph with occasional gusts to 12 mph

Night: ABOVE 1000 FT ELEV: North to northeast 2-5 mph by about 2000 increasing through the night becoming northeast 6-10 mph gusts to 15 mph after midnight

BELOW 1000 FT ELEV: North 2-5 mph by about 2000 increasing through the night becoming north 6-12 mph after midnight

OUTPUTS

FIRE BEHAVIOR

GENERAL: The fires were burning in a mix of grass and brush with stands of timber and timber litter that are extremely dry and have a heavy fuel loading. The initial fire spread was driven by high winds and low humidity with long range spotting. With the predicted northwest and northeast wind, smoldering litter could cast embers and produce spot fires in receptive fuel beds, especially where timber litter fuel loading or heavy grass crops are high. Winds that align with drainages could lead to increased rates of spread and the possibility spotting. Smoldering portions of the fire can increase in activity in the evenings with the northerly wind and poor humidity recovery.

Probability of Ignition: 85%
 100 HRFM: 90th Percentile

FDFM: 3%
 LAL: 1

ERC: 65 (77 90th Percentile)
 1000 HRFM: Near 90th Percentile

SPECIFIC: * RATES OF SPREAD AND FLAME LENGTHS ARE FOR NEW STARTS *****

	<i>Rate of Spread (ft/min)</i>		<i>Flame Length (in feet)</i>		<i>Spotting Distance</i>
	Head	Flank	Head	Flank	
Grass	Head	17-71	Head	4-11	500 ft – 1/4 mile
	Flank	4-16	Flank	3-6	
	Backing	2-9	Backing	2-4	
Brush	Head	29-58	Head	12-18	500 ft – 1/4 mile
	Flank	6-12	Flank	6-9	
	Backing	4-7	Backing	4-7	
Timber Litter	Head	4-7	Head	2-5	500 ft – 1/4 mile
	Flank	1-2	Flank	1-3	
	Backing	Less than 1	Backing	1-2	

AIR OPERATIONS:

Patchy smoke in the morning under shallow inversions
 Sunrise: 0713 Sunset: 1827

SAFETY

- New fires can grow rapidly in light flashy fuels.
- Exceptionally dry fuels warrant a high degree of caution.
- Don't become complacent! Identify your safety zones and escape routes.



WIND COMPLEX SAFETY MESSAGE

Maintain Situational Awareness

INCIDENT: Wind Complex CA-NEU-026295

DATE: October 13, 2017 **TIME:** 0700-0700

Major Hazards and Risks: Driving, Windy dry weather, Limited resources.

Driving: Slow Down! Drive defensively. Expect the unexpected around every curve. Drive with headlights and seatbelts on. Coordinate your movements on one-lane roads.

Fire Behavior: Fuels are receptive to fire spread. Be alert to changes in wind direction and expect changes in fire behavior. Watch for spot fires outside the control lines.

Downed powerlines: Follow power line safety guidelines (IRPG pg.24), watch out for burned out power poles.

Personnel: Manage yourself and those around you for fatigue. Drink fluids frequently and eat nutritious food regularly. As fatigue increases, injuries tend to increase also. Keep an eye on your crew and partner. Stay engaged and make smart decisions.

Hazard trees: Survey your work areas for hazard trees, flag and restrict access, use only qualified personnel for tree felling. Dead trees from bug kill. Review and follow **Hazard Tree Safety**, pg. 22-23 in your IRPG.

Heavy Equipment – Stay alert working around heavy equipment working in the area, monitor safe working distances, utilize communication with heavy equipment operators (radio or hand signals), avoid working below dozers, watch for rolling material.

Mop Up: Conduct a thorough briefing for all personnel. Use all PPE, including eye protection. Maintain proper spacing. Be alert for stump holes. Evaluate unburned islands and stay alert.

Review your ICS 206 and know what to do in the event of an (IWI).

Lookouts, Communications, Escape routes, Safety zones

Tailgate Safety

- **Accountability:** everyone checks in and everyone checks out. Supervisors know where their crews are at all times
- **Communication:** everyone knows the com-plan
- **Briefing:** everyone knows the plan and the contingency plan
- **Safety gear:** everyone has the appropriate safety gear in good working condition
- **LCES:** they are clear and made known to everyone

Fire Suppression Repair


- Stay alert working around heavy equipment:
- Utilize communication with heavy equipment operators (radio or hand signals).
 - Monitor safe working distances
 - Avoid working below dozers, watch for rolling material.
 - Maintain accountability of personnel



WIND COMPLEX INCIDENT RISK ANALYSIS (ICS 215a)

DIV	HAZARDOUS ACTIONS/CONDITIONS	MITIGATIONS / WARNINGS / REMEDIES
ALL	FIRE BEHAVIOR	Monitor current weather conditions and forecasts. Make sure all personnel receive thorough briefings every shift. Be observant for wind shifts. Maintain adequate escape routes and safety zones. Advise all personnel if these are compromised or changed. Set trigger points when appropriate. Adhere to 10 Standard Orders, mitigate 18 situations, Maintain Situational Awareness.
ALL	FATIGUE	Be alert for signs of fatigue and take breaks as necessary. Monitor incoming resources for level of fatigue, Drink water before, during and after shifts, up to 1.5 gal. per shift. Rest when you can. Be alert for signs of heat stress in yourself and others; use the buddy system. Eat small meals often and when possible Drink electrolyte drinks at a 3 water to 1 sport drink ratio.
ALL	COMMUNICATIONS	Monitor for changes in the communications plan. Review ICS 205 in your IAP. Monitor command, tactical, and air to ground frequencies.
ALL	MOP UP	Conduct thorough briefing for all personnel (inside rear cover of IRPG) Use all required PPE, including eye protection. Be alert for stump holes and root cavities Minimize exposure to smoke and rotate personnel into clean environment as practical Back haul all trash and equipment off the line and return it to base camp. When lifting equipment, lift with your legs and not your back.
ALL	HAZARD TREES	Identify and Isolate the area to provide for the safety of others. Flag and make proper notifications. Many pockets of dead trees. Do Not Fall trees out of your certification level.
ALL	LINE CONSTRUCTION	Conduct thorough briefing for all personnel (inside rear cover IRPG). Ensure LCES in place prior to engagement (IRPG p. 7). Establish adequate safety zones (IRPG p.8). Use Downhill Line Checklist (IRPG p. 9). Follow "Look Up, Look Down, Look Around" procedures (IRPG p. 3-4). Utilize Risk Management Process (IRPG p.1).
ALL	DRIVING HAZARDS	Slow Down! Drive defensively! Expect the unexpected around every curve. Drive with headlights and seatbelts on. Narrow dirt roads with limited passing room, coordinate your movements. Civilians are still in the Evacuation Order areas. Use warning devices when operating near traffic.
ALL	AIRCRAFT OPERATIONS	Monitor air-to-ground frequency, they are your eyes in the sky. Use air-to-ground frequency to communicate with aircraft. Use clear, concise statements when directing aircraft.
ALL	DOZER SAFETY	Watch for rolling material. Monitor safe working distances. Avoid working below Dozers. Utilize communication with the operator (radio or hand signals)
ALL	POWER LINES	Follow <i>Power Line Safety</i> guidelines (IRPG pg.24.) Communicate power line hazards to immediate supervisor and hazard flag accordingly. Flag area around downed power lines and deny access. Treat all downed power lines as energized.
ALL	STRUCTURE DEFENSE & HAZARDS	Conduct thorough briefing for all personnel (inside rear cover IRPG). Follow <i>Wildland Urban Interface Guidelines</i> (IRPG p. 12-16).
ALL	MARIJUANA GROW OPERATIONS	Use extreme caution on grow sites. Do not enter. Hazardous chemicals associated with growing operation.
Incident Name: Wind Complex CA-NEU-026295 ICS 215a		DATE PREPARED: October 12, 2017 1800hrs Prepared by: Chad Thompson, Team 2 SOF(T)
		OPERATIONAL PERIOD October 13, 2017 0700-0700

ASSIGNMENT LIST (ICS 204)

1. Incident Name: WIND COMPLEX		2. Operational Period: Date From: 10/13/17 Date To: 10/14/17 Time From: 0700 Time To: 0700			3. Branch: Div/Group: A Alpha		
4. Operations Personnel: Operations Section Chief: Charlie Blankenheim Night Ops: Mike Inman Branch Director: Division/Group Supervisor:							
5. Resources Assigned: ** Resources Below in Bold are 12 Hour **					Reporting Location, Special Equipment, Remarks, Notes, and Information Time Location		
Resource Identifier	ALS	Leader	Personnel	Request #			
ENG NEU 2393		Mathiasen, Anna	3	E-190	0700-0700	ICP	
6. Work Assignments: Mop up and patrol							
7. Special Instructions:							
8. Communications (radio and/or phone contact numbers needed for this assignment):							
Name	Ch	Function	Rx Freq	Rx Tone	Tx Freq	Tx Tone	Notes
CDF C2	1, 2, 3	COMMAND	151.2650	103.5 (T8)	159.3300	SEE ICS 205	Tone 9, Tone 11, Tone 16
CDF T1	4	TACTICAL	151.2575	192.8 (T16)	151.2575	192.8 (T16)	
CALCORD	14	MEDICAL	156.0750	156.7 (T6)	156.0750	156.7 (T6)	
CDF T15	15	AIR TO GROUND	159.2700	192.8 (T16)	159.2700	192.8 (T16)	
GUARD	16	EMERGENCY	168.6250	0.0	168.6250	110.9 (T1)	
9. Prepared by: Name: Keith Tsudama			Pos/Title: RESL		Signature: 		
ICS 204			Date/Time: 10/12/2017 2300 hours				


ASSIGNMENT LIST (ICS 204)

1. Incident Name: WIND COMPLEX	2. Operational Period: Date From: 10/13/17 Date To: 10/14/17 Time From: 0700 Time To: 0700		3. Branch: II - Lobo Div/Group: B Bravo				
4. Operations Personnel: Operations Section Chief: Charlie Blankenheim Night Ops: Mike Inman Branch Director: James Hudson (T) Branch Safety: Steve Walker (12-Hour) Division/Group Supervisor: Jim Smith							
5. Resources Assigned:		** Resources Below in Bold are 12 Hour **		Reporting Location, Special Equipment, Remarks, Notes, and Information Time Location			
Resource Identifier	ALS	Leader	Personnel		Request #		
STC XCA 4063C		Dickinson, Richard	19	E-88	0700-0700 DP 1		
CRW2 ORS PACIFIC OASIS		Culp, Donovan	16	C-56	0700-1900 DP 1		
W/T PVT E-139 VEST		Vest, Scott	2	E-139	0700-0700 DP 1		
FEMP VASQUEZ O-174	ALS	Vasquez, Justin A	1	O-174	0700-0700 DP 1		
FEMT FERREIRA O-97		Ferreira, Eric	1	O-97	0700-0700 DP 1		
6. Work Assignments: Continue to build and improve lines Mop up 300' in from control lines and patrol Identify suppression repair needs							
7. Special Instructions: <i>* ALL Resources that are Italicized MUST report to Check-In to receive their new Request #'s *</i> FEMP VASQUEZ / FEMT FERREIRA shared throughout all of Branch II							
8. Communications (radio and/or phone contact numbers needed for this assignment):							
Name	Ch	Function	Rx Freq	Rx Tone	Tx Freq	Tx Tone	Notes
CDF C2	1, 2, 3	COMMAND	151.2650	103.5 (T8)	159.3300	SEE ICS 205	Tone 9, Tone 11, Tone 16
CDF T24	5	TACTICAL	151.3175	192.8 (T16)	151.3175	192.8 (T16)	
CALCORD	14	MEDICAL	156.0750	156.7 (T6)	156.0750	156.7 (T6)	
CDF T15	15	AIR TO GROUND	159.2700	192.8 (T16)	159.2700	192.8 (T16)	
GUARD	16	EMERGENCY	168.6250	0.0	168.6250	110.9 (T1)	
9. Prepared by: Name: Keith Tsudama			Pos/Title: RESL		Signature:		
ICS 204			Date/Time: 10/12/2017 2300 hours				

ASSIGNMENT LIST (ICS 204)

1. Incident Name: WIND COMPLEX		2. Operational Period: Date From: 10/13/17 Date To: 10/14/17 Time From: 0700 Time To: 0700			3. Branch: II - Lobo Div/Group: D Delta		
4. Operations Personnel: Operations Section Chief: Charlie Blankenheim Night Ops: Mike Inman Branch Director: James Hudson (T) Branch Safety: Steve Walker (12-Hour) Division/Group Supervisor: Thomas Morgan (T)							
5. Resources Assigned: ** Resources Below in Bold are 12 Hour **					Reporting Location, Special Equipment, Remarks, Notes, and Information Time Location		
Resource Identifier	ALS	Leader	Personnel	Request #			
STC XSJ 4184C		Edwards, Rick	17	E-211	0700-0700	DP 1	
CRW2 ORS WEST COAST 2		Guerrero, Daniel	20	C-55	0700-1900	DP 1	
W/T PVT E-144 ALL AGENCY		Hill, Doug	2	E-144	0700-0700	DP 1	
<i>FALM 0-239 (was unassigned)</i>							
6. Work Assignments: Continue to build and improve lines Mop up 300' in from control lines and patrol Identify suppression repair needs							
7. Special Instructions: <i>* ALL Resources that are Italicized MUST report to Check-In to receive their new Request #'s *</i> FEMP VASQUEZ / FEMT FERREIRA shared throughout all of Branch II							
8. Communications (radio and/or phone contact numbers needed for this assignment):							
Name	Ch	Function	Rx Freq	Rx Tone	Tx Freq	Tx Tone	Notes
CDF C2	1, 2, 3	COMMAND	151.2650	103.5 (T8)	159.3300	SEE ICS 205	Tone 9, Tone 11, Tone 16
CDF T24	5	TACTICAL	151.3175	192.8 (T16)	151.3175	192.8 (T16)	
CALCORD	14	MEDICAL	156.0750	156.7 (T6)	156.0750	156.7 (T6)	
CDF T15	15	AIR TO GROUND	159.2700	192.8 (T16)	159.2700	192.8 (T16)	
GUARD	16	EMERGENCY	168.6250	0.0	168.6250	110.9 (T1)	
9. Prepared by: Name: Keith Tsudama Pos/Title: RESL Signature: <i>Keith Tsudama</i>							
ICS 204 Date/Time: 10/12/2017 2300 hours							


ASSIGNMENT LIST (ICS 204)

1. Incident Name: WIND COMPLEX		2. Operational Period: Date From: 10/13/17 Date To: 10/14/17 Time From: 0700 Time To: 0700			3. Branch: II - Lobo Div/Group: F Foxtrot		
4. Operations Personnel: Operations Section Chief: Charlie Blankenheim Night Ops: Mike Inman Branch Director: James Hudson (T) Branch Safety: Steve Walker (12-Hour) Division/Group Supervisor: Lee Nelson (12-Hour)							
5. Resources Assigned:		** Resources Below in Bold are 12 Hour **			Reporting Location, Special Equipment, Remarks, Notes, and Information Time Location		
Resource Identifier	ALS	Leader	Personnel	Request #			
STA OES 4800A		Butler, Steve	22	E-208	0700-0700	DP 1	
ENG SNF 42		Ybarra, Juan M	5	E-264	0700-1900	DP 1	
ENG SNF 43		Talbott, Lyndon A.	5	E-265	0700-1900	DP 1	
ENG SNF 312		Seymour, Michael D	5	E-266	0700-1900	DP 1	
ENG SNF 313		Sharpe, Andrew G	5	E-262	0700-1900	DP 1	
CRW2 NCF CLEARWATER		Waters, Sheena	21	C-42	0700-1900	DP 1	
W/T PVT E-143 REDWARDS		Edwards, Rob	2	E-143	0700-0700	DP 1	
6. Work Assignments: Continue to build and improve lines Mop up 300' in from control lines and patrol Identify suppression repair needs							
7. Special Instructions: <i>* ALL Resources that are Italicized MUST report to Check-In to receive their new Request #'s *</i> FEMP VASQUEZ / FEMP FERREIRA shared throughout all of Branch II							
8. Communications (radio and/or phone contact numbers needed for this assignment):							
Name	Ch	Function	Rx Freq	Rx Tone	Tx Freq	Tx Tone	Notes
CDF C2	1, 2, 3	COMMAND	151.2650	103.5 (T8)	159.3300	SEE ICS 205	Tone 9, Tone 11, Tone 16
CDF T31	6	TACTICAL	159.3825	192.8 (T16)	159.3825	192.8 (T16)	
CALCORD	14	MEDICAL	156.0750	156.7 (T6)	156.0750	156.7 (T6)	
CDF T15	15	AIR TO GROUND	159.2700	192.8 (T16)	159.2700	192.8 (T16)	
GUARD	16	EMERGENCY	168.6250	0.0	168.6250	110.9 (T1)	
9. Prepared by: Name: Keith Tsudama Pos/Title: RESL Signature: 							
ICS 204		Date/Time: 10/12/2017 2300 hours					

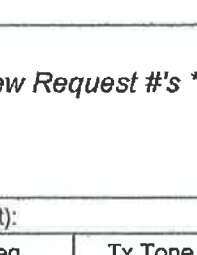
ASSIGNMENT LIST (ICS 204)

1. Incident Name: WIND COMPLEX		2. Operational Period: Date From: 10/13/17 Date To: 10/14/17 Time From: 0700 Time To: 0700				3. Branch: V - Cascade Div/Group: H Hotel 1 of 2	
4. Operations Personnel: Operations Section Chief: Charlie Blankenheim Night Ops: Mike Inman Branch Director: Matt Wallen (12 hr) Branch Safety: Ryan Danielsen (T) Division/Group Supervisor: Herb Johnson (12-Hour)							
5. Resources Assigned:		** Resources Below in Bold are 12 Hour **				Reporting Location, Special Equipment, Remarks, Notes, and Information	
Resource Identifier	ALS	Leader	Personnel	Request #	Time	Location	
T/F6 WIND #2		Childs, Meredith	21	E-9005	0700-1900	DP 15	
ENG6 CTF 671		Smith, Jesse E	3	E-272	0700-1900	DP 15	
ENG6 CTF E611		Erickson, Jesse	3	E-273	0700-1900	DP 15	
ENG6 MCN B61		Pickering, Dale	3	E-274	0700-1900	DP 15	
ENG4 SWAN VALLEY		Pruett, Ken	3	E-275	0700-1900	DP 15	
ENG6 MCN B62		Johnston, Ellis	3	E-276	0700-1900	DP 15	
ENG5 SES E249		Chambers, Scott	4	E-281	0700-1900	DP 15	
ENG NEU 2365			4	E-162	0700-0700	DP 15	
ENG NEU 2371		Harcourt, Wesley	3	E-58	0700-0700	DP 15	
ENG NEU 2381			3	E-164	0700-0700	DP 15	
ENG MDF 45		Chaparro, Robert P	5	E-161	0700-1900	DP 15	
ENG SNF 52		Bethel, Ritter G	5	E-263	0700-1900	DP 15	
ENG PNF 332		Wells, Jennifer	5	E-158	0700-1900	DP 15	
CRW2 ORS R&R		Rocha, Cristobal	20	C-58	0700-1900	DP 15	
CRW2 FCF 11A		Bird, Andrew	20	C-43	0700-1900	DP 15	
W/T PVT E-136 JACKSON WATER		Anderson, Sandra	2	E-136	0700-0700	DP 15	
W/T PVT E-140 COTTONWOOD			2	E-140	0700-0700	DP 15	
6. Work Assignments: <i>CRW C-59 (new arrival)</i> Continue to build and improve lines Mop up 300' in from control lines and patrol Identify suppression repair needs							
7. Special Instructions: <i>* ALL Resources that are Italicized MUST report to Check-In to receive their new Request #'s *</i> FEMP GREGORY / FEMT DEMERS shared throughout all of Branch V							
8. Communications (radio and/or phone contact numbers needed for this assignment):							
Name	Ch	Function	Rx Freq	Rx Tone	Tx Freq	Tx Tone	Notes
CDF C2	1, 2, 3	COMMAND	151.2650	103.5 (T8)	159.3300	SEE ICS 205	Tone 9, Tone 11, Tone 16
VFIRE 24	7	TACTICAL	154.2725	156.7 (T6)	154.2725	156.7 (T6)	
CALCORD	14	MEDICAL	156.0750	156.7 (T6)	156.0750	156.7 (T6)	
CDF T15	15	AIR TO GROUND	159.2700	192.8 (T16)	159.2700	192.8 (T16)	
GUARD	16	EMERGENCY	168.6250	0.0	168.6250	110.9 (T1)	
9. Prepared by: Name: Keith Tsudama		Pos/Title: RESL		Signature:			
ICS 204		Date/Time: 10/12/2017 2300 hours					


ASSIGNMENT LIST (ICS 204)

1. Incident Name: WIND COMPLEX		2. Operational Period: Date From: 10/13/17 Date To: 10/14/17 Time From: 0700 Time To: 0700				3. Branch: V - Cascade Div/Group: M / O Mike	
4. Operations Personnel: Operations Section Chief: Charlie Blankenheim (12hr) Night Ops: Mike Inman Branch Director: Matt Wallen (12hr-ni) Branch Safety: Ryan Division/Group Supervisor: Sean Whalen (12-Hour/Day) Pila Malolo Danielson (T)							
5. Resources Assigned:		** Resources Below in Bold are 12 Hour **				Reporting Location, Special Equipment, Remarks, Notes, and Information	
Resource Identifier	ALS	Leader	Personnel	Request #	Time	Location	
T/F XST 4204		Serpa, Jeff	18	E-202	0700-0700	DP 15	
ENG NEU 2352		Yurek, Brandon	3	E-229	0700-0700	DP 15	
ENG NEU 2383		Mckeown, Kevin	3	E-226	0700-0700	DP 15	
CRW2 ORS MQ FRANCO 1		Hernandez, Rodrigo	20	C-52	0700-1900	DP 15	
CRW2 ORS MQ FRANCO 2		Franco, Florencio	16	C-53	0700-1900	DP 15	
W/T PVT E-155 H20 TO GO		Wright, Junior	2	E-155	0700-0700	DP 15	
W/T PVT E-157 A&F		Elliott, Howard	2	E-157	0700-0700	DP 15	
ENG 2363 (was 0/S)							
6. Work Assignments: Continue to build and improve lines Mop up 300' in from control lines and patrol Identify suppression repair needs							
7. Special Instructions: * ALL Resources that are <i>Italicized</i> MUST report to Check-In to receive their new Request #'s * FEMP GREGORY / FEMT DEMERS shared throughout all of Branch V							
8. Communications (radio and/or phone contact numbers needed for this assignment):							
Name	Ch	Function	Rx Freq	Rx Tone	Tx Freq	Tx Tone	Notes
CDF C2	1, 2, 3	COMMAND	151.2650	103.5 (T8)	159.3300	SEE ICS 205	Tone 9, Tone 11, Tone 18
VFIRE 26	9	TACTICAL	154.3025	156.7 (T6)	154.3025	156.7 (T6)	
CALCORD	14	MEDICAL	156.0750	156.7 (T6)	156.0750	156.7 (T6)	
CDF T15	15	AIR TO GROUND	159.2700	192.8 (T16)	159.2700	192.8 (T16)	
GUARD	16	EMERGENCY	168.6250	0.0	168.6250	110.9 (T1)	
9. Prepared by: Name: Keith Tsudama Pos/Title: RESL Signature:  Date/Time: 10/12/2017 2300 hours							
ICS 204							

ASSIGNMENT LIST (ICS 204)

1. Incident Name: WIND COMPLEX		2. Operational Period: Date From: 10/13/17 Date To: 10/14/17 Time From: 0700 Time To: 0700			3. Branch: VII - LaPorte Div/Group: Q Quebec		
4. Operations Personnel: Operations Section Chief: Charlie Blankenheim Night Ops: Mike Inman Branch Director: Garrett Sjolund Branch Safety: Ryan Danielsen (T) Division/Group Supervisor: Darren Bakken							
5. Resources Assigned: ** Resources Below in Bold are 12 Hour **							
Resource Identifier	ALS	Leader	Personnel	Request #	Reporting Location, Special Equipment, Remarks, Notes, and Information Time Location		
STC SHU 9240C		Whitehurst, Timothy R	18	E-209	0700-0700	DP 20	
ENG5 ARCADIA 442		Clksena, Randall	4	E-279	0700-1900	DP 20	
STG AEU 9273G		Loveless, Jeffrey	37	C-35	0700-0700	DP 20	
W/T PVT E-127 ALGERINE		Carne, Jim	2	E-127	0700-0700	DP 20	
W/T PVT E-131 HARRIS		Enlow, Clancy	2	E-131	0700-0700	DP 20	
W/T PVT E-153 NORM PAUL		Paul, Norm	2	E-153	0700-0700	DP 20	
W/T PVT E-156 LAWLOR		Lawlor, Patty	2	E-156	0700-0700	DP 20	
FEMP LESIEUR O-420	ALS	Lesieur, Todd	1	O-420	0700-0700	DP 20	
FEMT GARCIA O-172		Garcia, Robert J	1	O-172	0700-0700	DP 20	
<i>CRW C-46 Bitterroot (new arrival)</i> <i>ENG NES DNA E-280 (" ")</i> <i>ENG E-269 (" ")</i> <i>ENG E-270 (" ")</i>							
6. Work Assignments: Continue to build and improve lines Mop up 300' in from control lines and patrol Identify suppression repair needs							
7. Special Instructions: <i>* ALL Resources that are Italicized MUST report to Check-In to receive their new Request #'s *</i>							
8. Communications (radio and/or phone contact numbers needed for this assignment):							
Name	Ch	Function	Rx Freq	Rx Tone	Tx Freq	Tx Tone	Notes
CDF C2	1, 2, 3	COMMAND	151.2650	103.5 (T8)	159.3300	SEE ICS 205	Tone 9, Tone 11, Tone 16
NIFC T5	10	TACTICAL	166.7250	0.0	166.7250	0.0	
CALCORD	14	MEDICAL	156.0750	156.7 (T6)	156.0750	156.7 (T6)	
CDF T15	15	AIR TO GROUND	159.2700	192.8 (T16)	159.2700	192.8 (T16)	
GUARD	16	EMERGENCY	168.6250	0.0	168.6250	110.9 (T1)	
9. Prepared by: Name: Keith Tsudama Pos/Title: RESL Signature: 							
ICS 204		Date/Time: 10/12/2017		2300 hours			

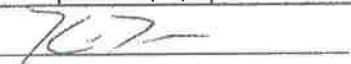
ASSIGNMENT LIST (ICS 204)

1. Incident Name: WIND COMPLEX		2. Operational Period: Date From: 10/13/17 Date To: 10/14/17 Time From: 0700 Time To: 0700			3. Branch: VII - LaPorte Div/Group: S Sierra		
4. Operations Personnel: Operations Section Chief: Charlie Blankenheim Night Ops: Mike Inman Branch Director: Garrett Sjolund Branch Safety: Ryan Danielsen (T) Division/Group Supervisor: Mike Stewart / Matt Bergstrand (T)							
5. Resources Assigned: ** Resources Below in Bold are 12 Hour **							
Resource Identifier	ALS	Leader	Personnel	Request #	Reporting Location, Special Equipment, Remarks, Notes, and Information		
					Time	Location	
ENG NEU 2382		Rouse, Andrew	4	E-223	0700-0700	DP 20	
ENG NEU 2373		Mcconnell, Micah	3	E-218	0700-0700	DP 20	
ENG NEU 2374		Radford, Phillip A	3	E-215	0700-0700	DP 20	
ENG NEU 2382		Baker, Jacob	3	E-227	0700-0700	DP 20	
ENG NEU 2392		Hollingshead, Justin	3	E-220	0700-0700	DP 20	
ENG NEU 2395		Lee, John	3	E-163	0700-0700	DP 20	
ENG RAR 5960		Wright, Matt	4	E-166	0700-0700	DP 20	
STG SHU 9241G		Covert, Don	33	C-34	0700-0700	DP 20	
CRW AEU GRB 5		Abeloe, Mark	16	C-33	0700-0700	DP 20	
CRW TALLAC IHC		Betty, Kyle	19	C-10	0700-1900	DP 20	
DOZ PNF 2		Collins, David	3	E-68	0700-1900	DP 20	
DOZ PVT E-65 T2 AMADOR		Vicini, Tony	2	E-65	0700-0700	DP 20	
W/T PVT E-129 KULIKOV			2	E-129	0700-0700	DP 20	
W/T PVT E-132 HARRIS		Mcgary, John	2	E-132	0700-0700	DP 20	
W/T PVT E-291 TOUGH CO.		Conner, Wayne	2	E-291	0700-0700	DP 20	
W/T PVT E-292 TOUGH CO.		Ramon	1	E-292	0700-0700	DP 20	
FEMP LUCAS O-418	ALS	Lucas, Matthew	1	O-418	0700-0700	DP 20	
FEMT GARCIA O-171		Garcia, Robert A	1	O-171	0700-0700	DP 20	
6. Work Assignments: Continue to build and improve lines Mop up 300' in from control lines and patrol Identify suppression repair needs							
7. Special Instructions: <i>* ALL Resources that are Italicized MUST report to Check-In to receive their new Request #'s *</i>							
8. Communications (radio and/or phone contact numbers needed for this assignment):							
Name	Ch	Function	Rx Freq	Rx Tone	Tx Freq	Tx Tone	Notes
CDF C2	1, 2, 3	COMMAND	151.2650	103.5 (T8)	159.3300	SEE ICS 205	Tone 9, Tone 11, Tone 16
NIFC T5	10	TACTICAL	166.7250	0.0	166.7250	0.0	
CALCORD	14	MEDICAL	156.0750	156.7 (T8)	156.0750	156.7 (T8)	
CDF T15	15	AIR TO GROUND	159.2700	192.8 (T16)	159.2700	192.8 (T16)	
GUARD	16	EMERGENCY	168.6250	0.0	168.6250	110.9 (T1)	
9. Prepared by: Name: Keith Tsudama Pos/Title: RESL Signature: 							
ICS 204 Date/Time: 10/12/2017 2300 hours							

ASSIGNMENT LIST (ICS 204)

1. Incident Name: WIND COMPLEX		2. Operational Period: Date From: 10/13/17 Date To: 10/14/17 Time From: 0700 Time To: 0700			3. Branch: VII - LaPorte Div/Group: U Uniform 1 of 2		
4. Operations Personnel: Operations Section Chief: Charlie Blankenheim Night Ops: Mike Inman Branch Director: Garrett Sjolund Branch Safety: Ryan Danielsen (T) Division/Group Supervisor: Mark Rotlisberger							
5. Resources Assigned:		** Resources Below in Bold are 12 Hour **			Reporting Location, Special Equipment, Remarks, Notes, and Information Time Location		
Resource Identifier	ALS	Leader	Personnel	Request #			
ENG BTU 2154		Seaton, Michael	3	E-308	0700-0700	DP 20	
ENG BTU 2160		Peery, Jonathan	3	E-310	0700-0700	DP 20	
ENG BTU 2165		Fleming, Kevin	6	E-306	0700-0700	DP 20	
<i>ENG 2167</i>				*	<i>0700-0700</i>	DP 20	
<i>ENG 54 - No Show</i>				*	<i>0700-0700</i>	DP 20	
ENG TNF 341		Holloway, Christopher J	7	E-216	0700-1900	DP 20	
ENG6 SUNDANCE 301		Munro, Peter	3	E-268	0700-1900	DP 20	
ENG6 327		Hall, David	3	E-271	0700-1900	DP 20	
ENG5 HIGHLANDS 147		Ortega, Enrique	4	E-277	0700-1900	DP 20	
ENG6 NES 246		Bryant, Matthew D	4	E-278	0700-1900	DP 20	
CRW TAHOE IHC		Guerrero, Daniel	19	C-7	0700-1900	DP 20	
CRW AMERICAN RIVER IHC		Radtke, Matthew	20	C-8	0700-1900	DP 20	
CRW FEATHER RIVER IHC		Ratcliff, Leland	18	C-9	0700-1900	DP 20	
CRW2 PANHANDLE		Cody, Griffin	21	C-45	0700-1900	DP 20	
DOZ PVT E-61 MADERS		Mader, Al	2	E-61	0700-0700	DP 20	
DOZ PVT E-284 DADCO		Munjar, Doug	2	E-284	0700-0700	DP 20	
W/T PVT E-134 EL DORADO		Starks, Erik	2	E-134	0700-0700	DP 20	
W/T PVT E-135 J & M		Duncan, Jack	2	E-135	0700-0700	DP 20	
6. Work Assignments: Continue to build and improve lines Mop up 300' in from control lines and patrol Identify suppression repair needs							
7. Special Instructions: <i>* ALL Resources that are Italicized MUST report to Check-In to receive their new Request #'s *</i>							
8. Communications (radio and/or phone contact numbers needed for this assignment):							
Name	Ch	Function	Rx Freq	Rx Tone	Tx Freq	Tx Tone	Notes
CDF C2	1, 2, 3	COMMAND	151.2650	103.5 (T8)	159.3300	SEE ICS 205	Tone 9, Tone 11, Tone 16
NIFC T6	11	TACTICAL	166.7750	0.0	166.775	0.0	
CALCORD	14	MEDICAL	156.0750	156.7 (T6)	156.0750	156.7 (T6)	
CDF T15	15	AIR TO GROUND	159.2700	192.8 (T16)	159.2700	192.8 (T16)	
GUARD	16	EMERGENCY	168.6250	0.0	168.6250	110.9 (T1)	
9. Prepared by: Name: Keith Tsudama		Pos/Title: RESL		Signature:			
ICS 204		Date/Time: 10/12/2017 2300 hours					

ASSIGNMENT LIST (ICS 204)

1. Incident Name: WIND COMPLEX		2. Operational Period: Date From: 10/13/17 Date To: 10/14/17 Time From: 0700 Time To: 0700			3. Branch: Div/Group: Fire Suppression Repair 1 of 2		
4. Operations Personnel: Operations Section Chief: Charlie Blankenheim Night Ops: Mike Inman Branch Director: Division/Group Supervisor: Jack Harvey							
5. Resources Assigned:		** Resources Below in Bold are 12 Hour **			Reporting Location, Special Equipment, Remarks, Notes, and Information		
Resource Identifier	ALS	Leader	Personnel	Request #	Time	Location	
CRW2 FCF 11B		Dennls, Josh	20	C-44	0700-1900	ICP	
CRW2 P.R. REFORESTATION		Hernandez, Eladio	20	C-60	0700-1900	ICP	
DOZ PVT E-79 J. DEPUE		Depue, Jaired	1	E-79	0700-1900	ICP	
DOZ PVT E-235 GRAHAM		Graham, Clayton	1	E-235	0700-1900	ICP	
DOZ PVT E-238 SILLER to Div J/K		Cummings, Terry	1	E-238	0700-1900	ICP	
DOZ PVT E-334 RIDGE LOGGING		Landingham, Darrell	2	E-334	0700-1900	ICP	
W/T PVT E-125 FIRELINE			1	E-125	0700-1900	ICP	
W/T PVT E-130 HARRIS		Zuurbier, John	1	E-130	0700-1900	ICP	
W/T PVT E-133 ALAN'S		Logue, Ricki	1	E-133	0700-1900	ICP	
W/T PVT E-290 WURLITZER		Page, Tom	1	E-290	0700-1900	ICP	
EXCE-223 (new)					0700-1900	ICP	
EXC E-224					0700-1900	ICP	
EXC E-225					0700-1900	ICP	
HEQB RUSHDOONY O-286		Rushdoony, Issac	1	O-286	0700-1900	ICP	
HEQB MENDEZ				*	0700-1900	ICP	
HEQB JOHNSON O-250		Johnson, Travis A	1	O-250	0700-1900	ICP	
HEQB (T) WILSON O-364		Wilson, Andy	1	O-364	0700-1900	ICP	
HEQB <i>Ratcliff 0-446 (new)</i>					0700-1900	ICP	
6. Work Assignments: Identify and repair fire suppression damage per the Fire Suppression Repair plan							
7. Special Instructions: * ALL Resources that are <i>Italicized</i> MUST report to Check-In to receive their new Request #'s *							
8. Communications (radio and/or phone contact numbers needed for this assignment):							
Name	Ch	Function	Rx Freq	Rx Tone	Tx Freq	Tx Tone	Notes
CDF C2	1, 2, 3	COMMAND	151.2650	103.5 (T8)	159.3300	SEE ICS 205	Tone 9, Tone 11, Tone 16
NIFC T7	12	TACTICAL	168.2500	0.0	168.2500	0.0	
CALCORD	14	MEDICAL	156.0750	156.7 (T6)	156.0750	156.7 (T6)	
CDF T15	15	AIR TO GROUND	159.2700	192.8 (T16)	159.2700	192.8 (T16)	
GUARD	16	EMERGENCY	168.6250	0.0	168.6250	110.9 (T1)	
9. Prepared by: Name: Keith Tsudama Pos/Title: RESL Signature: 							
ICS 204		Date/Time: 10/12/2017 2300 hours					

ASSIGNMENT LIST (ICS 204)

1. Incident Name: WIND COMPLEX		2. Operational Period: Date From: 10/13/17 Date To: 10/14/17 Time From: 0700 Time To: 0700			3. Branch: Div/Group: Fire Suppression Repair <p style="text-align: right;">2 of 2</p>				
4. Operations Personnel: Operations Section Chief: Charlie Blankenheim Night Ops: Mike Inman Branch Director: Division/Group Supervisor: Jack Harvey		5. Resources Assigned: ** Resources Below in Bold are 12 Hour **			Reporting Location, Special Equipment, Remarks, Notes, and Information Time Location				
Resource Identifier	ALS	Leader	Personnel	Request #					
RESP SOOY O-468		Sooy, Daniel	1	O-468				0700-1900	ICP
RESP AHMADI O-270		Ahmadi, David	1	O-270	0700-1900	ICP			
6. Work Assignments: Identify and repair fire suppression damage per the Fire Suppression Repair plan									
7. Special Instructions: * <i>ALL Resources that are Italicized MUST report to Check-In to receive their new Request #'s</i> *									
8. Communications (radio and/or phone contact numbers needed for this assignment):									
Name	Ch	Function	Rx Freq	Rx Tone	Tx Freq	Tx Tone	Notes		
CDF C2	1, 2, 3	COMMAND	151.2650	103.5 (T8)	159.3300	SEE ICS 205	Tone 9, Tone 11, Tone 16		
NIFC T7	12	TACTICAL	168.2500	0.0	168.2500	0.0			
CALCORD	14	MEDICAL	156.0750	156.7 (T6)	156.0750	156.7 (T6)			
CDF T15	15	AIR TO GROUND	159.2700	192.8 (T16)	159.2700	192.8 (T16)			
GUARD	16	EMERGENCY	168.6250	0.0	168.6250	110.9 (T1)			
9. Prepared by: Name: Keith Tsudama		Pos/Title: RESL		Date/Time: 10/12/2017 2300 hours		Signature:			
ICS 204									

ASSIGNMENT LIST (ICS 204)

1. Incident Name: <p style="text-align: center;">WIND COMPLEX</p>	2. Operational Period: Date From: 10/13/17 Date To: 10/14/17 Time From: 0700 Time To: 0700	3. Branch: Staging: Marysville					
4. Operations Personnel: Operations Section Chief: Charlie Blankenheim Night Ops: Mike Inman Branch Director: Division/Group Supervisor:		Reporting Location, Special Equipment, Remarks, Notes, and Information Time Location					
5. Resources Assigned: ** Resources Below in Bold are 12 Hour **							
Resource Identifier	ALS	Leader	Personnel	Request #			
6. Work Assignments:							
Monitor command frequencies							
Maintain 3 minute response time							
7. Special Instructions:							
8. Communications (radio and/or phone contact numbers needed for this assignment):							
Name	Ch	Function	Rx Freq	Rx Tone	Tx Freq	Tx Tone	Notes
CDF C2	1, 2, 3	COMMAND	151.2650	103.5 (T8)	159.3300	SEE ICS 205	Tone 9, Tone 11, Tone 16
CALCORD	14	MEDICAL	156.0750	156.7 (T6)	156.0750	156.7 (T6)	
CDF T15	15	AIR TO GROUND	159.2700	192.8 (T16)	159.2700	192.8 (T16)	
GUARD	16	EMERGENCY	168.6250	0.0	168.6250	110.9 (T1)	
9. Prepared by: Name:		Keith Tsudama		Pos/Title:		RESL	
ICS 204		Date/Time: 10/12/2017		2300 hours		Signature:	

MEDICAL PLAN ICS 206	1. INCIDENT NAME Wind Complex	2. DATE PREPARED 10-12-17	3. TIME PREPARED 2100 hrs	4. OPERATIONAL PERIOD 10/13/17 – 10/14/17 0700 - 0700				
5. INCIDENT MEDICAL AID STATIONS								
MEDICAL AID STATIONS	LOCATION	PARAMEDICS						
		YES	NO					
Medical Supplies	Base Camp			X				
MERT w/treatment	Base Camp			X				
6. TRANSPORTATION								
A. AMBULANCE SERVICES								
NAME	LOCATION	PHONE	PARAMEDICS					
			YES	NO				
Sierra Nevada Ambulance	155 Glasson Way, Grass Valley, CA	(530) 274-6001	X					
Bi-County Ambulance	1700 Poole Blvd, Yuba City, CA	(530) 682-1848	X					
GUARD 840 24hr hoist	Mather Air Base (Local ECC)	(408) 472-1613	X					
CALSTAR	13750 Lincoln Way, Auburn, CA	(888) 692-6692	X					
B. INCIDENT AMBULANCES								
NAME	LOCATION	PARAMEDICS						
		YES	NO					
Bi-County Ambulance M-114	Fire Station 61 (Loma Rica) LaPorte-Cascade Fire	X						
Sierra Nevada Ambulance	911 Contract for McCourtney and Lobo Fires	X						
7. HOSPITALS								
NAME	ADDRESS	TRAVEL TIME		PHONE	HELIPAD		BURN CENTER	
		AIR	GRND		YES	NO	YES	NO
Sierra Nevada Hospital	155 Glasson Way, Grass Valley	10	40	(530) 274-6001	X			X
Sutter Roseville Medical Center	1 Medical Plaza Dr, Roseville	25	90	(916) 781-1811	X			X
Rideout Hospital	726 4 th St, Marysville	15	45	(530) 749-4300		X		X
UC Davis Medical Center	2315 Stockton Blvd, Sacramento	45	120	(916) 734-3636	X		X	
8. MEDICAL EMERGENCY PROCEDURES								
EMERGENCY FREQUENCY: AIR GUARD LINE EMERGENCY: Crew Supervisor will contact Division Supervisor with patient complaint/condition and location. <ul style="list-style-type: none"> • Division/Group Supervisor contacts: <ol style="list-style-type: none"> 1. Closest EMS resource 2. Communications • Communications contacts: <ol style="list-style-type: none"> 1. Ground or Air ambulance as requested 2. Operations 3. Safety 4. Medical Unit • Division Supervisor or designee will serve as point of contact and run medical emergency on assigned channel. <ol style="list-style-type: none"> 1. A pre-assigned tactical frequency (i.e. CALCORD) should be used for IW1 and only for duration of need. • Communications will clear command channel for emergency traffic as needed and only for duration of need. CAMP EMERGENCY: Contact Communications for 911 response following local procedures. <ul style="list-style-type: none"> • Communications contacts: <ol style="list-style-type: none"> 1. Medical Unit Leader <ul style="list-style-type: none"> -Crew Supervisor -Logistics -Comps/Claims 2. Safety 					INJURY REPORTING PROCEDURES NATURE OF INJURY _____ LOCATION OF PATIENT _____ POINT OF CONTACT _____ TRANSPORTATION REQUESTED BY: AIR ___ GROUND ___ POINT OF PICKUP _____ LAT _____ LONG _____ PATIENT UNIT ID _____ IS AN EMT WITH PATIENT: YES ___ NO ___ AGE _____ SEX: MALE ___ FEMALE ___ ALL EMERGENCIES---Secure the area and identify witnesses for later investigation. Keep an accurate log of events.			
ICS 206 (Rev 03/12)	9. PREPARED BY: (Medical Unit Leader) Justin VanderHulst (MEDL)	10. REVIEWED BY: (Safety Officer)						

ICS 205 - INCIDENT RADIO COMMUNICATIONS PLAN


1. Incident Name: <b style="text-align: center;">WIND COMPLEX	2. Date/Time Prepared Date: 10/12/2017 Time: 1800	3. Operational Period: Date From: 10/13/2017 Date To: 10/14/2017 Time From: 0700 Time To: 0700
---	--	---

Controlled Unclassified Information//Basic								
Ch#	Function	Name	Assigned To	Rx Freq	Rx Tone	Tx Tone	Notes	
1	COMMAND	CDF CMD 2	INCIDENT WIDE	151.2650	103.5 (T8)	159.3300	100.0 (T9)	TONE 9 - OREGON PEAK
2	COMMAND	CDF CMD 2	INCIDENT WIDE	151.2650	103.5 (T8)	159.3300	114.8 (T11)	TONE 11 - ALDER SPRINGS
3	COMMAND	CDF CMD 2	INCIDENT WIDE	151.2650	103.5 (T8)	159.3300	192.8 (T16)	TONE 16 - WOLF MTN
4	TACTICAL	CDF TAC 1	DIV A	151.2575	192.8 (T16)	151.2575	192.8 (T16)	
5	TACTICAL	CDF TAC 24	BRANCH II DIV B & D	151.3175	192.8 (T16)	151.3175	192.8 (T16)	
6	TACTICAL	CDF TAC 31	BRANCH II DIV F	159.3825	192.8 (T16)	159.3825	192.8 (T16)	
7	TACTICAL	VFIRE 24	BRANCH V DIV H	154.2725	156.7 (T6)	154.2725	156.7 (T6)	
8	TACTICAL	VFIRE 25	BRANCH V DIV J/K	154.2875	156.7 (T6)	154.2875	156.7 (T6)	
9	TACTICAL	VFIRE 26	BRANCH V DIV M/O	154.3025	156.7 (T6)	154.3025	156.7 (T6)	
10	TACTICAL	NIFC TAC 5	BRANCH VII DIV Q & S	166.7250	0.0	166.7250	0.0	
11	TACTICAL	NIFC TAC 6	BRANCH VII DIV U	166.7750	0.0	166.7750	0.0	
12	TACTICAL	NIFC TAC 7	FIRE SUPP REPAIR	168.2500	0.0	168.2500	0.0	
13								
14	EMS COORDINATION	CALCORD	INCIDENT WIDE	156.0750	156.7 (T6)	156.0750	156.7 (T6)	
15	AIR TO GROUND	CDF T15	INCIDENT WIDE	159.2700	192.8 (T16)	159.2700	192.8 (T16)	ALL BRANCHES IN COMPLEX
16	EMERGENCY ONLY	AIR GUARD	INCIDENT WIDE	168.6250	0.0	168.6250	110.9 (T1)	GPH/DPH, 16 CH RADIOS
17								
18								
19								
20	EMERGENCY ONLY	AIR GUARD	INCIDENT WIDE	168.6250	0.0	168.6250	110.9 (T1)	GPH/DPH CMD, 20 CH RADIOS

5. Special Instructions

Controlled Unclassified Information//Basic

Use the ICS 205 to reference and to correlate with the ICS 204's depending on your work assignments

6. Prepared by (Communications Unit Leader): Name: John Aguilera, COML IMT #2	Signature: 
Date/Time: 10/12/17 1800	

Suppression Repair Message

The following are repair tasks that crews can conduct as available on the fireline.

Handlines

- Install waterbreaks when necessary to prevent erosion.
- Handlines along the contour, on ridge tops or other flat areas will not require waterbreaks if the line will not concentrate water runoff.
- Waterbreaks on handlines shall be cut a minimum of 6 inches into firm ground and shall have an unobstructed discharge at the outlet.
- Remove all trash from the lines so it can be backhauled.

Dozer Lines

- Move hose lines to one side of the line so that it can be accessed and repaired by equipment if necessary.
- Install waterbreaks as feasible focusing on very steep areas first.

Roads

- Remove berms from outside of roads.
- Clean Culvert inlets of debris from suppression activities.
- Clean inside ditches of debris from suppression activities.

General Repair Items

- Report any damage to property including gates, fences, water sources, culverts or any other damage caused by suppression activities.
- Remove all trash generated by the incident.

• Fireline and Road Gradient (%):	<u>0-10</u>	<u>11-25</u>	<u>26-50*</u>	<u>>50*</u>
Fireline waterbreak spacing	150'	100	75'-50'	50'-25'
Road waterbreak spacing	150'	100	75'-50'	N/A'

Fire Suppression Repair

It is time to begin planning for the fire suppression repair efforts. A fire suppression repair plan will be developed for the NEU Wind Incident. To accomplish our goals we need to identify problem areas, prescribe the needed work, and ensure that the work is completed.

In an effort to identify problem areas we have created the attached form for use by the Branches and Divisions. As noted on the form, items to consider include: fences and gates damaged during the incident; road and watercourse crossings repairs; culverts and watercourses needing cleanout; fire breaks in need of waterbarring; trash and equipment pickup.

Use the attached form(s) to document locations where repair work may be necessary. Use maps to show locations. GPS's can be down loaded by GIS. Return forms to the Suppression Repair Unit at the end of your shift.

Fire Suppression Repair Checklist CA-NEU-026295

Fire Name: Wind Complex Form Preparer _____

Division _____ Date Prepared _____

<u>Work Needed</u>	<u>Location</u> <u>(T./R./S.)</u>
Fence/Gate Repair _____	_____
Waterbars _____	_____
Road Repair _____	_____
Watercourse Cleanout _____	_____
Culvert Cleanout and Repair _____	_____
Seeding/Mulching Watercourse Crossing _____	_____
Trash Pickup _____	_____
Other _____	_____

NOTE: List type of material/equipment/personnel needed (e.g., fencing materials, tools, dozer, backhoe, stakeside, handcrew, etc.)



DEMOBILIZATION INSTRUCTIONS

Wind Complex

CA-NEU-026295

DEMOB PROCEDURES

- CHECK THE DEMOB LIST EACH MORNING. YOU CAN FIND THE DEMOB LIST THROUGH THE “QR” CODE ON THE I.A.P. COVER OR ON LISTS POSTED THROUGHOUT CAMP. ONLY REPORT TO DEMOB AT YOUR SCHEDULED TIME. EARLY ADMITTANCE WILL NOT BE ALLOWED.

- REPORT TO DEMOB AT APPOINTMENT TIME TO RECEIVE A CHECKOUT FORM (ICS-221), THEN GO TO THE FOLLOWING UNITS TO OBTAIN THE NECESSARY SIGNATURES:

- ✓ SUPPLY UNIT
- ✓ COMMUNICATIONS UNIT
- ✓ GROUND SUPPORT/VEHICLE INSPECTION***
- ✓ DOCUMENTATION UNIT
- ✓ TIME UNIT
- ✓ TRAINING UNIT (IF APPLICABLE)
- ✓ ACCOMMODATIONS (IF APPLICABLE)

***VEHICLE INSPECTION:

- THE DEMOB UNIT WILL INFORM YOU IF THE VEHICLE NEEDS TO BE INSPECTED.
- YOU MUST HAVE THE ICS-221 DEMOB FORM WITH YOU AT VEHICLE INSPECTION.
- A VEHICLE INSPECTION TIME WILL BE PROVIDED WHEN YOU INITIALLY ARRIVE TO THE DEMOBILIZATION UNIT.
- DO NOT REPORT FOR VEHICLE INSPECTION PRIOR TO YOUR APPOINTMENT

VEHICLE INSPECTION LOCATION: IN CAMP

RETURN THE COMPLETED ICS-221 FORM TO THE DEMOB UNIT AND TRAVEL HOME SAFE!

TRAINING SPECIALIST MESSAGE

**All Wind Complex Incident Trainees
Beat the Rush!!!**

In order to receive documented credit for your training assignment you must register with the incident Training Specialist.

**The Training Specialist is available immediately following the morning Briefing.
Location: Red building next to Check-In.**

In order to receive documented credit for your training assignment – you must close out with the Training Specialist before you Demob!!

Forms are available at the Training Office

Remember: No documentation – it didn't happen!

Claudia Soiza - 949 632-7813

**Incident Trainee/Trainer Data Form
Wind Complex CA-NEU 026295**

Training Specialist: Claudia Soiza 949.632.7813

- All Incident trainees, including those on Firefighting Modules at your earliest opportunity complete this form and see the Training Specialist.
- Prior to or as you process through DEMOB, remember to close your training package. To close your training package bring: 1) A performance rating from your trainer. (ICS 225)
2) Your task book that has as many entries as possible by your Trainer.

Trainee Data

Trainee Name: _____ ICS Trainee Position: _____

Request # (A,C,E, or O): _____ Agency Designator (Ex. CA-RRU): _____

Ordered as Trainee? Y N Priority Trainee ____ Local Forest Trainee ____ IMT Trainee

Date Assigned: _____ Cell / Contact # While on Incident: _____

Training Records Mailed To: (Fire Chief, Training Officer):

Name: _____ Title _____

Name of Agency/Unit: _____

Agency/Unit Address: _____

City: _____ State: ____ Zip Code: _____ Phone: _____

Trainee Prerequisites

1. Possesses valid Qualification Card or agency certification card? ___Yes ___No

2. Trainee has current position task book issued by home unit? ___Yes ___No

Current Task Book Progress (Circle) 0% 25% 50% 75% 90%

Priority Open Task in PTB (What do you need to accomplish on this incident?)

Trainer/Evaluator Data

Trainer / Evaluator Name: _____ ICS position on fire: _____

Home Unit: _____ Agency Designator (Ex CA-RRU): _____

Request # (A,C,E,O): _____

Work Address: _____

City: _____ State: _____ Zip Code: _____

Cell / Contact While on Incident: _____

WIND COMPLEX FINANCE MESSAGE

COMP / CLAIMS

- Vehicles rented by CAL FIRE are considered department vehicles
- All accident reporting procedures must be followed, including reporting the accident to COMP/CLAIMS and SAFETY
- All required forms and documentation shall be completed and brought to COMP / CLAIMS

SHIFT TICKETS

- DIVS and OPBD must complete shift tickets for all hired equipment, including runners and fallers
- Turn completed shift tickets into **TIME UNIT** daily

OFF SITE FEEDING

- Resources staying in Rocklin or Roseville have authorization to feed off site, **(dinner only)**
- Follow Per diem rates, make the purchase and bring copies of receipts and AO 341 into Finance
- All other resources must feed in Base Camp

HIRED EQUIPMENT VENDORS

- Please bring your agreements into the **TIME UNIT** to start the documentation process

FEDERAL TIME KEEPERS

- Onsite and located in the finance shop

FINANCE CONTACTS

- **Comp/Claims 24/7 Phone: 925-407-6363**
- **Cal OES Rep, Chief Zander: 916-712-6771**
- **Finance Section Chief, Bill Winter, 805-903-3491**
- **Deputy Finance Section Chief, Dale Barnett, 530-524-5623**

SHIFT TICKET EXAMPLE

EMERGENCY SHIFT TICKET and EVALUATION FORM					Contractor Name	
Incident or Project Name Wind complex			Incident Number CANEU 26295		Request Number E# 123	
Agreement Number XXX - 000000 - 00					Operator #1 Chucke Carroll	
Equipment Make CAT					Operator #2 Bill Winter	
Equipment Model / Type D6XM			Operator Furnished By: <input checked="" type="checkbox"/> Contractor <input type="checkbox"/> Government			
Serial Number 111111			Operating Supplies Furnished By: <input checked="" type="checkbox"/> Contractor <input type="checkbox"/> Government			
Licence Number 111111			Equipment Status <input checked="" type="checkbox"/> Inspected <input checked="" type="checkbox"/> Under Agreement			
Equipment Use (Circle) Hours Days / Miles			Released by Government <input type="checkbox"/>			
Date Mo / Day			Withdrawn by Contractor <input type="checkbox"/>			
Start			Remarks/Comments **			
Stop			TWO OPERATORS NO DAMAGE/ NO CLAIMS			
Work						
Assignment						
8/3 0700 2400 17			DIV M			
8/4 0001 0700 7			DIV M			
Vendor Rating						
Poor*		Avg.		Good		Exc. N/A
Met Performance Expectations		Vendor Rating must be done.		Govt. Rep. Name and Position - PRINT		Jason Marsh
Equipment in Safe Working Condition				Govt. Rep. Signature		Jason Marsh
Operator Skill Level				Contractor Signature		Chucke Carroll
Operates Safely				Date		08/04/15
Operator's Cooperation Level				Time		0800
Overall Performance						
* NOTE: Any rating of POOR requires an explanation in Comment Section.					CALFIRE 297 (Rev 3-2011)	
**Final evaluation or for more documentation, use an ICS Form 230 or equivalent.						
Pink - Finance		Blue - Home Unit HE Coordinator		Yellow - Vendor		White - Govt Representative

EMERGENCY SHIFT TICKET and EVALUATION FORM					Contractor Name	
The responsible Government Officer will complete this form each shift					EXCAVATOR COMPANY	
Incident or Project Name PONDEROSA FIRE			Incident Number CABTU013737		Request Number E # Here	
Agreement Number XXX - 000000 - 00					Operator #1 Bob Smith	
Equipment Make CAT			Operator #2			
Equipment Model / Type EXCAVATOR F900			Operator Furnished By: <input checked="" type="checkbox"/> Contractor <input type="checkbox"/> Government			
Serial Number 1XP3ESMP14239012			Operating Supplies Furnished By: <input checked="" type="checkbox"/> Contractor <input type="checkbox"/> Government			
Licence Number 9999999			Equipment Status <input checked="" type="checkbox"/> Inspected <input checked="" type="checkbox"/> Under Agreement			
Equipment Use (Circle) Hours Days / Miles			Released by Government <input type="checkbox"/>			
Date Mo / Day			Withdrawn by Contractor <input type="checkbox"/>			
Start			Remarks/Comments **			
Stop			1 OPERATOR NO DAMAGE/ NO CLAIMS			
Work						
Assignment						
8/3 0001 700 7			OFF SHIFT			
8/3 0700 1900 12			DIV M			
8/3 1900 2400 5			OFF SHIFT			
Vendor Rating						
Poor*		Avg.		Good		Exc. N/A
Met Performance Expectations		Vendor Rating must be done.		Govt. Rep. Name and Position - PRINT		Jason Marsh
Equipment in Safe Working Condition				Govt. Rep. Signature		Jason Marsh
Operator Skill Level				Contractor Signature		Bob Smith
Operates Safely				Date		08/04/15
Operator's Cooperation Level				Time		0800
Overall Performance						
* NOTE: Any rating of POOR requires an explanation in Comment Section.					CALFIRE 297 (Rev 3-2011)	
**Final evaluation or for more documentation, use an ICS Form 230 or equivalent.						
Pink - Finance		Blue - Home Unit HE Coordinator		Yellow - Vendor		White - Govt Representative

Turn shift tickets into Finance.



WIND COMPLEX PUBLIC INFORMATION



Incident Information Line: 530-823-4083

Media Line: 916-203-4153

MEDIA

California State Penal Code Section 409.5(d) allows the news media to enter scenes of disaster, riot, or civil disturbance. Properly identified members of the news media should not be restricted from entering the locations specified within the code, even if the area presents a danger to them. Media members should be advised of the nature of possible danger. Members of the media do not have the right to access crime scenes or any area where their presence may interfere with incident operations, mitigation or evidence collection.

- The media may only access private property with the property owner's permission. Fire personnel cannot provide members of the media with authorization to enter private property.
- If approached and questioned by the media and/or the public, talk about your assignment or task at hand. If need be, direct the questioning party to the incident PIO.
- Do not speculate or give opinions
- There is no such thing as an "off the record" comment.

CAL FIRE SOCIAL MEDIA POLICY (Social Media 0691)

Social Media is increasingly being used by public agencies and the media as well as the public. This form of communication continues to grow rapidly in order to supply the public's desire for instant information gratification. All personnel assigned to a CAL FIRE incident will adhere to the CAL FIRE Social Media Policy. Further information about the CAL FIRE Social Media Policy can be obtained from the Information Officer. If you are uncertain, please ask. **Do not post:**

- Inappropriate information, pictures or videos
- Opinions regarding the incident or policy
- Endorsements of any kind

PICTURES AND VIDEO OF INCIDENT

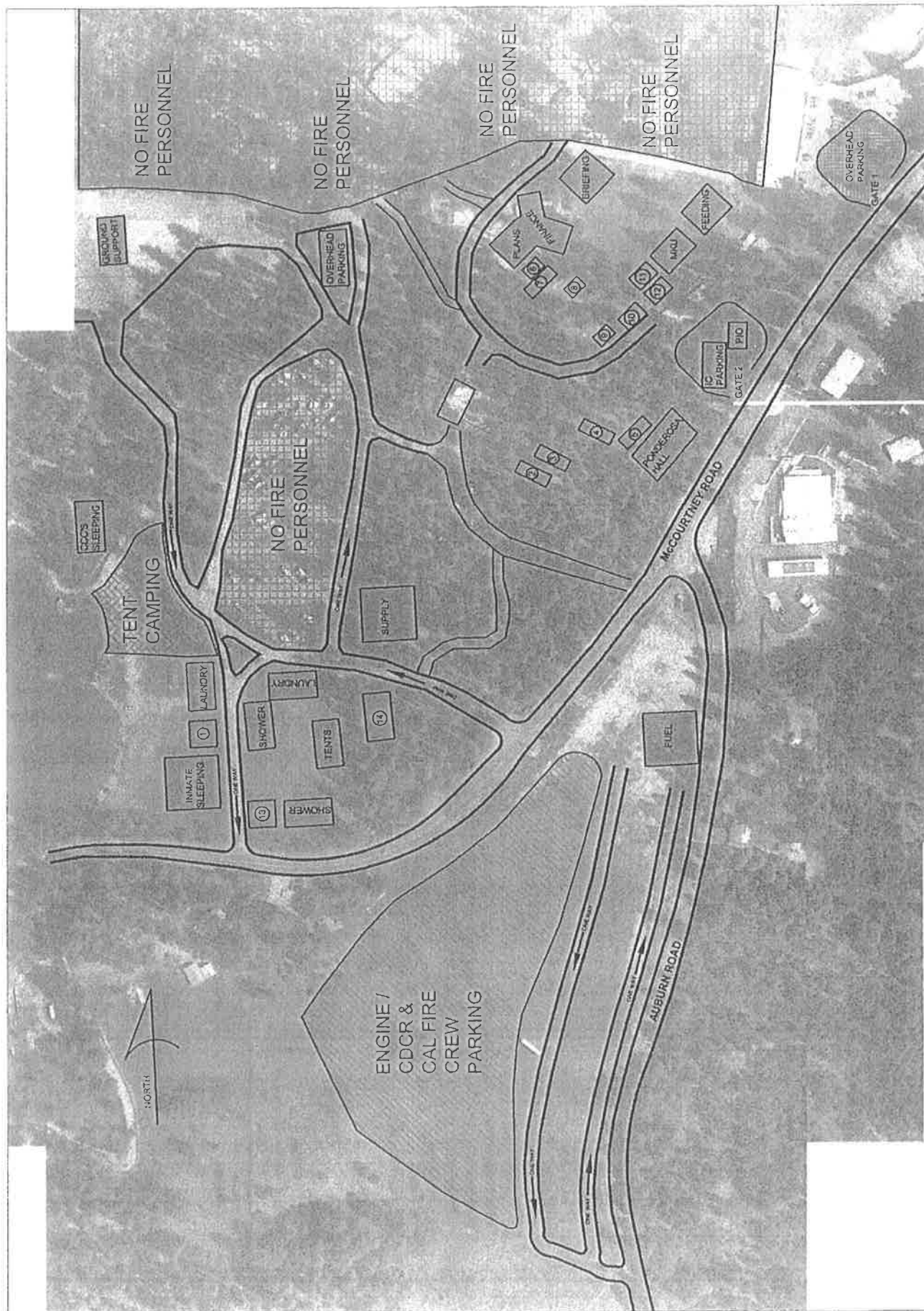
We are in a new era of media. Media no longer means the news/broadcast industry but now refers to anyone that has the capability to shoot video and or photographs and post them onto social media in a matter of minutes. Unfortunately we have seen some instances of video or photographs that have depicted unsafe, unprofessional or embarrassing circumstances which are a serious breach of ethics. When this happens it reflects poorly on all that are attached to this incident. Posting an inappropriate video, photo or blog comment could have unwanted effects. It may be unsafe to shoot photos or video and a firefighter who is concentrating on a camera can't be looking up, down and all around.

LOST AND FOUND

The Information staff will manage *Lost and Found* items for the incident. If you have lost an item, leave your contact information and what you have lost at the Information trailer. If you have found an item on the incident, bring the item to the Information trailer.

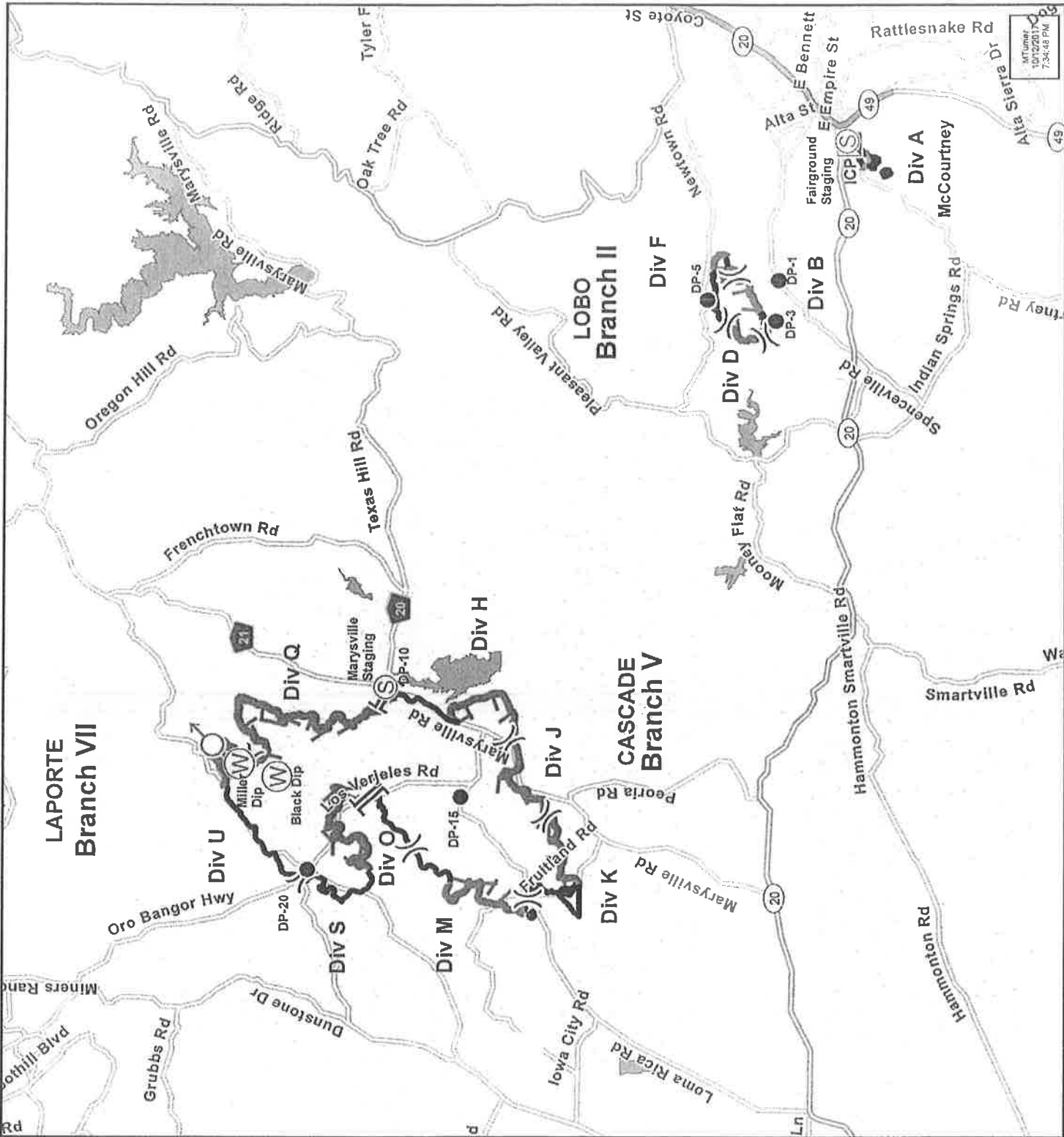
MAIL SERVICE

The Information staff will assist you in mailing and receiving letters and packages.



BASE CAMP MAP
WIND COMPLEX
 CA-NEU-026295

- ① INMATE SHOWERS
- ② FACILITIES
- ③ LOGISTICS
- ④ MOTELS / ORDERING
- ⑤ IC TRAILER
- ⑥ GIS
- ⑦ CLERICAL
- ⑧ COMM
- ⑨ LIASON / SAFETY
- ⑩ OPS
- ⑪ MEDICAL
- ⑫ MEDL
- ⑬ DUMPSTER
- ⑭ ICE / WATER & LUNCHESES



MTuner
10/13/2017
7:34:48 PM



TRAVEL MAP
Wind Complex
 CA-NEU-026295
 10/13/2017

- Drop Point
- Incident Command Post
- Spot Fire
- Staging Area
- Water Source
- Division
- Branch
- Uncontrolled Fire Edge
- Completed Fire Line
- Interstates
- Highways
- Major Roads
- Ramps
- Water Features

