

WIND COMPLEX

CA-NEU-026295

INCIDENT ACTION PLAN



OPERATIONAL PERIOD

10/14/2017 - 10/15/2017

0700 - 0700



INCIDENT OBJECTIVES (ICS 202)

1. Incident Name: WIND COMPLEX
2. Operational Period: Date From: 10/14/2017 Date To: 10/15/2017
Time From: 0700 Time To: 0700

3. Objective(s):

Management Objectives:

- Provide for emergency personnel and public safety at all times.
- Protect property, improvements, and infrastructure.
- Ensure repopulation takes place in a quick, efficient, and effective manner.
- Ensure coordinated, timely and accurate release of public information.
- Foster and maintain relationships with all cooperators and stakeholders.
- Protect economic, natural, cultural and heritage resources.
- Maintain fiscal accountability and keep costs commensurate with values at risk.

Control Objectives:

All Branches:

- Keep the fire within the established perimeter

General Situational Awareness:

Long shifts, draw down of resources, high likelihood for strong winds and new IA starts.

5. Site Safety Plan Required? Yes No

Approved Site Safety Plan(s) Located at:

6. Incident Action Plan

- | | | | |
|--|---|---|--|
| <input checked="" type="checkbox"/> ICS 203 | <input checked="" type="checkbox"/> ICS 204 | <input type="checkbox"/> WUI Guidelines | <input checked="" type="checkbox"/> Finance Message |
| <input checked="" type="checkbox"/> Weather Forecast | <input checked="" type="checkbox"/> ICS 220 | <input checked="" type="checkbox"/> Suppression Repair Plan | <input checked="" type="checkbox"/> PIO Message |
| <input checked="" type="checkbox"/> Fire Behavior | <input checked="" type="checkbox"/> ICS 206 | <input type="checkbox"/> Logistics Message | <input checked="" type="checkbox"/> Transportation Map |
| <input checked="" type="checkbox"/> Safety Message | <input checked="" type="checkbox"/> ICS 205 | <input checked="" type="checkbox"/> Demob Plan | <input checked="" type="checkbox"/> Base Camp Map |
| <input checked="" type="checkbox"/> ICS-215a | <input type="checkbox"/> Firing Ops Checklist | <input checked="" type="checkbox"/> Training Specialist | <input checked="" type="checkbox"/> ICS 214 |

7. Prepared By: Andy Murphy Position/Title: PSC Signature: 

8. Approved by Incident Commander: Glenn Patterson Signature: _____

ICS 202

ORGANIZATION ASSIGNMENT LIST (ICS 203)

| | | | | | |
|--|---|---|--------------------------------------|---|---------------------|
| 1. Incident Name: WIND COMPLEX | | 2. Operational Period: Date From: 10/14/2017 | | Date To: 10/15/2017 | |
| | | Time From: 0700 | | Time To: 0700 | |
| 3. Incident Commander(s) and Command Staff: | | | 7. Operation Section: | | |
| IC/UC's | Glenn Patterson / Dave Allen (T) | Chief | Mike Inman | | |
| Deputy | Ron Myers | Deputy | Mark Brunton | | |
| Safety Officer | Steve Walker / Clinton Hamilton (T) | Night Ops | Abdul Ahmad | | |
| Information Officer | Ron Oatman / Jeremy Rahn | | | | |
| Liaison Officer | Mike Martin / John McCammon | Branch | | | |
| Law Enforcement Liaison | Kevin Pack / John Davis | Division/Group | | | |
| | | Division/Group | | | |
| 4. Agency/Organization Representatives: | | Branch | II - Lobo | Nick Casci | |
| Agency/Organization | Name | Division/Group | B | Herb Johnson (12-Hour) | |
| Yuba County Sheriff | Sgt. Smith | Division/Group | D | Radtky | |
| Butte County Sheriff | Lt. Smith | Division/Group | F | Lee Nelson (Day) / David Larson (Night) | |
| Nevada County Sheriff | Capt. Pettitt | Division/Group | | | |
| Red Cross | Artena Moon | Branch | V - Cascade | Landon Haack | |
| C.H.P. | Lt. Steffenson | Division/Group | H | Brad Rushing | |
| PG&E | Rob Cone | Division/Group | J / K | Dale Schmidt / Randy Northrup (T) | |
| CDCR | Lt. Hill | Division/Group | M / O | Gene Neely | |
| Cal OES | Corey Zander | Division/Group | | | |
| Nev. County Animal Evac | Bill Alexander | Branch | VII - LaPorte | Sean Dakin | |
| Cal Trans | Shelly Pangman | Division/Group | Q | Sean Whalen (Day) / Pila Malolo (Night) | |
| USFS | Shelly Allen | Division/Group | S | Matt Flock / Jason Mccarty (T) | |
| CCC | Angel Parga | Division/Group | U | Steven Swaney / Michael Alforque (T) | |
| | | Division/Group | | | |
| | | Branch | | | |
| 5. Planning Section: | | Division/Group | Fire Suppression Repair | Jack Harvey | |
| Chief | Andy Murphy | Division/Group | | | |
| Deputy | Jeff Windham | Branch | | | |
| Resource Unit | Keith Tsudama / Andy Hubbs / Roger Noor | Staging Area | Fairground | | |
| Situation Unit | Rob Clark / Dan Brown | Division/Group | | | |
| Documentation Unit | Katherine Gault | Division/Group | | | |
| Demobilization Unit | Ryan Villarino | Branch | | | |
| GISS | Fred Postler | Division/Group | | | |
| FBAN | Todd Hopkins | Division/Group | | | |
| IMET | Mike Smith | Division/Group | | | |
| Training Tech Spec | Claudia Soiza | Division/Group | | | |
| Fire Suppression Repair | Jack Harvey | Air Operations Branch | | Director: | Rob Sonsteng |
| 6. Logistics Section | | | Air Support Grp Sup | | |
| Chief | Ken Lowe / Milford Ferguson | | Helibase Manager | Byron Vance | |
| Supply Unit | Matt Siebecke | | | | |
| Facilities Unit | Devon Ellsworth / Scott Irvine | 8. Finance/Administration Section: | | | |
| Ground Support Unit | Tom Stroing | Chief | Bill Winter / Dale Barnett | | |
| Hired Equipment Tech | Jason Marsh | Time Unit | Chucke Carroll / Andre Schmidt (T) | | |
| Communications Unit | John Aguilera | Procurement Unit | Jason McDermott / Sandra Jewel (T) | | |
| Medical Unit | Matt Lathrop / Justin Vanderhulst | Comp/Claims Unit | Joe Ekblad | | |
| Motel Tech Spec | Paul Pumarejo | Cost Unit | Jennifer Fagen / Michelle Patton (T) | | |
| | | | | | |
| Prepared By: Name: | Andy Murphy | Position/Title: | PSC | Signature:  | |
| ICS 203 | | Date/Time: | 10/13/2017 2300 hours | | |



INCIDENT Weather Forecast



FORECAST NO: 3

NAME OF FIRE: NEU Wind Complex

PREDICTION FOR: SAT Day/Night **SHIFT**

UNIT: NEU

SHIFT DATE: Oct. 14/15 2017

SIGNED: Mike Smith *Mike Smith*

TIME AND DATE

Incident Meteorologist

FORECAST ISSUED: 1900 10/13/17

...Red Flag warning through Sunday morning for gusty north winds and low humidity...

WEATHER DISCUSSION: Surface high pressure dropping into the northern Great Basin will bring gusty northeast winds to the area today. These winds should be the strongest during the morning hours when the main upper level winds combine with the more typical downcanyon winds. Morning humidity recovery will be quite low with very low afternoon humidity expected. The winds should decrease somewhat in the afternoon and evening hours but breezy northeast winds will continue through Saturday night as they combine again with the normal drainage winds. Very dry conditions and warmer temperatures will continue into Sunday but with much lighter winds as high pressure aloft builds over the west coast. Warm and dry conditions with light winds will continue Monday before a slow cooling trend starts mid week.

WEATHER FORECAST:

WEATHER: Fair skies.

TEMPERATURES: High temperatures 76 to 81.

HUMIDITY: Minimum humidity 11 to 16% after poor overnight recovery of 25-35%

20 FT WINDS:

ABOVE 1000 FT ELEV - Northeast winds 6-10 mph with gusts to 15-20 mph through about noon then northwest 3-6 gusts to 12 mph. Winds returning to northeast after sunset.

BELOW 1000 FT ELEV - North 6-10 mph with gusts to 15-20 mph beoming northwest after about noon 6-10 mph gusts to 15 mph. Winds returning to north after sunset.

STABILITY/INVERSION: Weak inversions in the morning. Generally stable conditions in the afternoon.

OUTLOOK FOR Saturday Night: Fair skies. Weak inversions due to breezy winds. Minimum temperatures 51-56. Very poor RH recovery at 25-35%. Winds...Above 1000 feet elevation, becoming northeast after sunset 2-5 mph increasing after midnight to northeast 3-6 gusts to 12 mph. Below 1000 feet, winds becoming northeast after sunset 3-6 mph gusts to 12 mph evening hours. Winds decreasing all areas by sunrise.

OUTLOOK FOR SUNDAY: Fair skies. Highs 77-82. Minimum RH 9-14% Winds above 1000 feet northeast 1-4 gusts to 8 mph becoming southwest after about noon. Winds below 1000 feet northeast 1-4 gusts to 8 mph becoming southwest to northwest after about noon.

EXTENDED FORECAST OUTLOOK FOR MONDAY: Fair skies. Little change in temperatures or RH from Sunday. Mainly light terrain driven winds.

EXTRA INFORMATION: Sunrise: 7:15

Sunset: 6:27

FIRE BEHAVIOR FORECAST

| | |
|------------------------------------|--|
| FORECAST NUMBER: 005 | TYPE OF FIRE: Wildfire |
| FIRE NAME: Wind Complex | OPERATIONAL PERIOD: 10/14/2017 0700-0700 |
| DATE ISSUED: October 13, 2017 | TIME ISSUED: 1900 |
| UNIT: CA-NEU-026295 | SIGNED: <i>Todd Hopkins</i> |
| Typed/printed: Todd Hopkins (FBAN) | |

INPUTS

WEATHER SUMMARY: See Attached Spot Weather Forecast
RED FLAG WARNING THROUGH SUNDAY MORNING FOR GUSTY NORTH WINDS AND LOW RH

WEATHER: Day: Fair skies Night: Fair skies, weak inversion

TEMPERATURES / HUMIDITY: Day: 76-81 F Max Temperature / Min Humidity: 11%-16%
 Night: Min Temperature 51-56 F / Max Humidity: 25%-35%

20 FT WINDS: Day: ABOVE 1000 FT ELEV - Northeast winds 6-10 mph with gusts to 15-20 mph through about 1200 then northwest 3-6 mph with gusts to 12 mph

BELOW 1000 FT ELEV - North 6-10 mph with gust to 15-20 mph becoming northwest after 1200 to 6-10 mph with gusts to 15 mph

Night: ABOVE 1000 FT ELEV: Becoming northeast 2-5 mph after sunset increasing after midnight to northeast 3-6 mph gusts to 12 mph

BELOW 1000 FT ELEV: Becoming northeast 3-6 mph by after sunset, 3-6 mph gusts to 12 mph evening hours

OUTPUTS

FIRE BEHAVIOR

GENERAL: The fires were burning in a mix of grass and brush with stands of timber and timber litter that are extremely dry and have a heavy fuel loading. The initial fire spread was driven by high winds and low humidity with long range spotting. With the predicted northeast wind, smoldering litter could cast embers and produce spot fires in receptive fuel beds, especially where timber litter fuel loading or heavy grass crops are high. Winds that align with drainages could lead to increased rates of spread and the possibility spotting. Smoldering portions of the fire can increase in activity in the evenings with the northerly wind and poor humidity recovery.

Probability of Ignition: 87%
 100 HRFM: 90th Percentile

FDFM: 3%
 LAL: 1

ERC: 65 (77 90th Percentile)
 1000 HRFM: Near 90th Percentile

SPECIFIC: * RATES OF SPREAD AND FLAME LENGTHS ARE FOR NEW STARTS *****

| | Rate of Spread (ft/min) | | Flame Length (in feet) | | Spotting Distance (in miles) |
|---------------|-------------------------|-------------|------------------------|-------|------------------------------|
| | Head | Flank | Head | Flank | |
| Grass | Head | 55-223 | Head | 8-19 | 1/4 – 3/4 |
| | Flank | 5-19 | Flank | 3-6 | |
| | Backing | 2-10 | Backing | 2-5 | |
| Brush | Head | 82-180 | Head | 19-31 | 1/4 – 3/4 |
| | Flank | 7-15 | Flank | 6-10 | |
| | Backing | 4-8 | Backing | 5-7 | |
| Timber Litter | Head | 12-20 | Head | 4-8 | 1/4 – 3/4 |
| | Flank | 1-2 | Flank | 1-3 | |
| | Backing | Less than 1 | Backing | 1-2 | |

AIR OPERATIONS:

Gusty northeast winds in the area. Winds should be strongest in the morning around 0800
 Sunrise: 0714 Sunset: 1825

SAFETY

- New fires can grow rapidly in light flashy fuels.
- Exceptionally dry fuels warrant a high degree of caution.
- Don't become complacent! Identify your safety zones and escape routes.



WIND COMPLEX SAFETY MESSAGE

We Are ALL accountable for SAFE behaviors

INCIDENT: Wind Complex CA-NEU-026295

DATE: October 14, 2017 **TIME:** 0700-0700

Situational Awareness at All Times!

When It comes to Safety, the only thing worse than being oblivious to the unknown is ignoring the obvious....

Driving: Slow Down! Drive defensively. Expect the unexpected around every curve. Drive with headlights and seatbelts on. Coordinate your movements on one-lane roads.

Personnel: Manage yourself and those around you for fatigue. Drink fluids frequently and eat nutritious food regularly. As fatigue increases, injuries tend to increase also. Keep an eye on your crew and partner. Stay engaged and make smart decisions.

Heavy Equipment – Stay alert working around heavy equipment working in the area, monitor safe working distances, utilize communication with heavy equipment operators (radio or hand signals), avoid working below dozers, watch for rolling material.

Mop Up: Conduct a thorough briefing for all personnel. Use all PPE, including eye protection. Maintain proper spacing. Be alert for stump holes. Evaluate unburned islands and stay alert.

Fire Behavior: Fuels are receptive to fire spread. Be alert to changes in wind direction and expect changes in fire behavior. Be prepared for new fires.

Hazard trees: Survey your work areas for hazard trees, flag and restrict access, use only qualified personnel for tree felling. Dead trees from bug kill. Review and follow **Hazard Tree Safety**, pg. 22-23 in your IRPG.

Review your ICS 206 and know what to do in the event of an (IWI).

Lookouts, Communications, Escape routes, Safety zones

Tailgate Safety

- **Accountability:** everyone checks in and everyone checks out. Supervisors know where their crews are at all times
- **Communication:** everyone knows the com-plan
- **Briefing:** everyone knows the plan and the contingency plan
- **Safety gear:** everyone has the appropriate safety gear in good working condition
- **LCES:** they are clear and made known to everyone

Fire Suppression Repair

- Stay alert working around heavy equipment:
- Utilize communication with heavy equipment operators (radio or hand signals).
 - Monitor safe working distances
 - Avoid working below dozers, watch for rolling material.
 - Maintain accountability of personnel

Incident Safety Officer: Chad Thompson


Incident Commander: Glenn Patterson



WIND COMPLEX INCIDENT RISK ANALYSIS (ICS 215a)

| DIV | HAZARDOUS ACTIONS/CONDITIONS | MITIGATIONS / WARNINGS / REMEDIES |
|--|----------------------------------|--|
| ALL | DRIVING HAZARDS | Slow Down! Drive defensively! Expect the unexpected around every curve. Drive with headlights and seatbelts on. Narrow dirt roads with limited passing room, coordinate your movements. Civilians are still in the Evacuation Order areas. Use warning devices when operating near traffic. |
| ALL | MOP UP/BACK HAUL | Conduct thorough briefing for all personnel (inside rear cover of IRPG) Use all PPE, including eye protection. Be alert for stump holes and root cavities Minimize exposure to smoke and rotate personnel into clean environment as practical Back haul all trash and equipment off the line and return it to base camp. When lifting equipment, lift with your legs and not your back. |
| ALL | FATIGUE | Be alert for signs of fatigue and take breaks as necessary. Monitor incoming resources for level of fatigue. Drink water before, during and after shifts, up to 1.5 gal. per shift. Rest when you can. Be alert for signs of heat stress in yourself and others; use the buddy system. Eat small meals often and when possible Drink electrolyte drinks at a 3 water to 1 sport drink ratio. |
| ALL | COMMUNICATIONS | Monitor for changes in the communications plan. Review ICS 205 in your IAP. Monitor command, tactical, and air to ground frequencies. |
| ALL | HEAVY EQUIPMENT | Watch for rolling material. Monitor safe working distances. Avoid working below Dozers. Maintain Situational awareness around heavy equipment. Utilize communication with the operator (radio or hand signals) |
| ALL | HAZARD TREES | Identify and Isolate the area to provide for the safety of others. Flag and make proper notifications. Many pockets of dead trees. Do Not Fall trees out of your certification level. |
| ALL | LINE CONSTRUCTION | Conduct thorough briefing for all personnel (inside rear cover IRPG). Ensure LCES in place prior to engagement (IRPG p. 7). Establish adequate safety zones (IRPG p.8). Use Downhill Line Checklist (IRPG p. 9). Follow "Look Up, Look Down, Look Around" procedures (IRPG p. 3-4). Utilize Risk Management Process (IRPG p.1). |
| ALL | POWER LINES | Follow <i>Power Line Safety</i> guidelines (IRPG pg.24.) Communicate power line hazards to immediate supervisor and hazard flag accordingly. Flag area around downed power lines and deny access. Treat all downed power lines as energized. |
| ALL | MARIJUANA GROW OPERATIONS | Use extreme caution on grow sites. Do not enter. Hazardous chemicals associated with growing operation. |
| ALL | FIRE BEHAVIOR | Be prepared for new fires in the area. Monitor current weather conditions and forecasts. Make sure all personnel receive thorough briefings every shift. Be observant for wind shifts. Maintain adequate escape routes and safety zones. Advise all personnel if these are compromised or changed. Set trigger points when appropriate. |
| Incident Name: Wind Complex CA-NEU-026295 ICS 215a | | DATE PREPARED: October 13, 2017 1800hrs Prepared by: Chad Thompson, Team 2 SOF(T) |
| | | OPERATIONAL PERIOD October 14, 2017 0700-0700 |

ASSIGNMENT LIST (ICS 204)

| | | | | | | | |
|---|---------|---|-----------|-------------|---|-------------|--------------------------|
| 1. Incident Name: WIND COMPLEX | | 2. Operational Period: Date From: 10/14/17 Date To: 10/15/17 Time From: 0700 Time To: 0700 | | | 3. Branch: II - Lobo Div/Group: D Delta | | |
| 4. Operations Personnel: Operations Section Chief: Mike Inman Night Ops: Abdul Ahmad Branch Director: Nick Cascl Branch Safety: Clinton Hamilton (12-Hour) Division/Group Supervisor: Radtky | | | | | | | |
| 5. Resources Assigned: | | ** Resources Below in Bold are 12 Hour ** | | | Reporting Location, Special Equipment, Remarks, Notes, and Information Time Location | | |
| Resource Identifier | ALS | Leader | Personnel | Request # | | | |
| STC XYU 3300C | | Heggstrom, Kyle | 16 | E-321 | 0700-0700 | DP 1 | |
| CRW2 ORS WEST COAST 2 | | Guerrero, Daniel | 20 | C-55 | 0700-1900 | DP 1 | |
| W/T PVT E-143 REDWARDS | | Edwards, Rob | 2 | E-143 | 0700-0700 | DP 1 | |
| W/T PVT E-144 ALL AGENCY | | Hill, Doug | 2 | E-144 | 0700-0700 | DP 1 | |
| | | | | | | | |
| | | | | | | | |
| | | | | | | | |
| | | | | | | | |
| | | | | | | | |
| | | | | | | | |
| | | | | | | | |
| | | | | | | | |
| | | | | | | | |
| | | | | | | | |
| | | | | | | | |
| | | | | | | | |
| | | | | | | | |
| | | | | | | | |
| | | | | | | | |
| | | | | | | | |
| 6. Work Assignments: Mop up 300' in from control lines and patrol Backhaul all trash to Drop Points Pull hose as needed | | | | | | | |
| 7. Special Instructions: FEMP GARRIGUES / FEMT HANKINS will be shared throughout all of Branch II | | | | | | | |
| 8. Communications (radio and/or phone contact numbers needed for this assignment): | | | | | | | |
| Name | Ch | Function | Rx Freq | Rx Tone | Tx Freq | Tx Tone | Notes |
| CDF C2 | 1, 2, 3 | COMMAND | 151.2650 | 103.5 (T8) | 159.3300 | SEE ICS 205 | Tone 9, Tone 11, Tone 16 |
| CDF T24 | 5 | TACTICAL | 151.3175 | 192.8 (T16) | 151.3175 | 192.8 (T16) | |
| CALCORD | 14 | MEDICAL | 156.0750 | 156.7 (T6) | 156.0750 | 156.7 (T6) | |
| CDF T15 | 15 | AIR TO GROUND | 159.2700 | 192.8 (T16) | 159.2700 | 192.8 (T16) | |
| GUARD | 16 | EMERGENCY | 168.6250 | 0.0 | 168.6250 | 110.9 (T1) | |
| 9. Prepared by: Name: Keith Tsudama Pos/Title: RESL Signature:  | | | | | | | |
| ICS 204 | | Date/Time: 10/13/2017 2300 hours | | | | | |


ASSIGNMENT LIST (ICS 204)

| 1. Incident Name: WIND COMPLEX | | 2. Operational Period: Date From: 10/14/17 Date To: 10/15/17 Time From: 0700 Time To: 0700 | | | 3. Branch: II - Lobo Div/Group: F Foxtrot | | |
|--|---------|---|-----------|--|--|-------------|--------------------------|
| 4. Operations Personnel: Operations Section Chief: Mike Inman Night Ops: Abdul Ahmad Branch Director: Nick Casci Branch Safety: Clinton Hamilton (12-Hour) Division/Group Supervisor: Lee Nelson (Day) / David Larson (Night) | | | | | | | |
| 5. Resources Assigned: | | | | ** Resources Below In Bold are 12 Hour ** | | | |
| Resource Identifier | ALS | Leader | Personnel | Request # | Reporting Location, Special Equipment, Remarks, Notes, and Information Time Location | | |
| T/F XSA 4154 | ALS | Edmiston, Jim | 20 | E-146 | 0700-0700 DP 1 | | |
| CRW2 NCF CLEARWATER | | Waters, Sheena | 21 | C-42 | 0700-1900 DP 1 | | |
| | | | | | | | |
| | | | | | | | |
| | | | | | | | |
| | | | | | | | |
| | | | | | | | |
| | | | | | | | |
| | | | | | | | |
| | | | | | | | |
| | | | | | | | |
| | | | | | | | |
| | | | | | | | |
| | | | | | | | |
| | | | | | | | |
| | | | | | | | |
| | | | | | | | |
| | | | | | | | |
| | | | | | | | |
| | | | | | | | |
| | | | | | | | |
| | | | | | | | |
| | | | | | | | |
| | | | | | | | |
| | | | | | | | |
| | | | | | | | |
| | | | | | | | |
| | | | | | | | |
| | | | | | | | |
| | | | | | | | |
| | | | | | | | |
| 6. Work Assignments: Mop up 300' in from control lines and patrol Backhaul all trash to Drop Points Pull hose as needed | | | | | | | |
| 7. Special Instructions: FEMP GARRIGUES / FEMT HANKINS will be shared throughout all of Branch II | | | | | | | |
| 8. Communications (radio and/or phone contact numbers needed for this assignment): | | | | | | | |
| Name | Ch | Function | Rx Freq | Rx Tone | Tx Freq | Tx Tone | Notes |
| CDF C2 | 1, 2, 3 | COMMAND | 151.2650 | 103.5 (T8) | 159.3300 | SEE ICS 205 | Tone 9, Tone 11, Tone 16 |
| CDF T31 | 6 | TACTICAL | 159.3825 | 192.8 (T16) | 159.3825 | 192.8 (T16) | |
| CALCORD | 14 | MEDICAL | 156.0750 | 156.7 (T6) | 156.0750 | 156.7 (T6) | |
| CDF T15 | 15 | AIR TO GROUND | 159.2700 | 192.8 (T16) | 159.2700 | 192.8 (T16) | |
| GUARD | 16 | EMERGENCY | 168.6250 | 0.0 | 168.6250 | 110.9 (T1) | |
| 9. Prepared by: Name: Keith Tsudama Pos/Title: RESL ICS 204 Date/Time: 10/13/2017 2300 hours Signature: | | | | | | | |

ASSIGNMENT LIST (ICS 204)

| | | | | | | | | |
|---|---------|---|-----------|--------------|------------------|--|--------------------------|--|
| 1. Incident Name: <p style="text-align: center;">WIND COMPLEX</p> | | 2. Operational Period: Date From: 10/14/17 Date To: 10/15/17 Time From: 0700 Time To: 0700 | | | | 3. Branch: V - Cascade Div/Group: H Hotel | | |
| 4. Operations Personnel: Operations Section Chief: Mike Inman Night Ops: Abdul Ahmad Branch Director: Landon Haack Branch Safety: Barry Owens / Scott Wilson (T) Division/Group Supervisor: Brad Rushing | | | | | | | | |
| 5. Resources Assigned: ** Resources Below in Bold are 12 Hour ** | | | | | | Reporting Location, Special Equipment, Remarks, Notes, and Information Time Location | | |
| Resource Identifier | ALS | Leader | Personnel | Request # | | | | |
| STF TLC 5192F | | Duffy, Bryan | 17 | E-213 | 0700-0700 | DP 15 | | |
| ENG SNF 312 | | Seymour, Michael D | 5 | E-266 | 0700-1900 | DP 15 | | |
| ENG SNF 313 | | Sharpe, Andrew G | 5 | E-262 | 0700-1900 | DP 15 | | |
| CRW2 FCF 11A | | Bird, Andrew | 20 | C-43 | 0700-1900 | DP 15 | | |
| W/T PVT E-136 JACKSON WATER | | Anderson, Sandra | 2 | E-136 | 0700-0700 | DP 15 | | |
| FEMP SILVIA O-173 | ALS | Silvia, Frank | 1 | O-173 | 0700-0700 | DP 15 | | |
| FEMP ZAMORA O-180 | ALS | Zamora, Thomas | 1 | O-180 | 0700-0700 | DP 15 | | |
| | | | | | | | | |
| | | | | | | | | |
| | | | | | | | | |
| | | | | | | | | |
| | | | | | | | | |
| | | | | | | | | |
| | | | | | | | | |
| | | | | | | | | |
| | | | | | | | | |
| | | | | | | | | |
| | | | | | | | | |
| | | | | | | | | |
| | | | | | | | | |
| 6. Work Assignments: Mop up 300' in from control lines and patrol Backhaul all trash to Drop Points Pull hose as needed | | | | | | | | |
| 7. Special Instructions: FEMP SILVIA / FEMP ZAMORA will be shared throughout all of Branch V | | | | | | | | |
| 8. Communications (radio and/or phone contact numbers needed for this assignment): | | | | | | | | |
| Name | Ch | Function | Rx Freq | Rx Tone | Tx Freq | Tx Tone | Notes | |
| CDF C2 | 1, 2, 3 | COMMAND | 151.2650 | 103.5 (T8) | 159.3300 | SEE ICS 205 | Tone 9, Tone 11, Tone 16 | |
| VFIRE 24 | 7 | TACTICAL | 154.2725 | 156.7 (T6) | 154.2725 | 156.7(T6) | | |
| CALCORD | 14 | MEDICAL | 156.0750 | 156.7 (T6) | 156.0750 | 156.7 (T6) | | |
| CDF T15 | 15 | AIR TO GROUND | 159.2700 | 192.8 (T16) | 159.2700 | 192.8 (T16) | | |
| GUARD | 16 | EMERGENCY | 168.6250 | 0.0 | 168.6250 | 110.9 (T1) | | |
| 9. Prepared by: Name: Keith Tsudama Pos/Title: RESL Signature: _____ <i>KT</i> | | | | | | | | |
| ICS 204 | | Date/Time: 10/13/2017 2300 hours | | | | | | |


ASSIGNMENT LIST (ICS 204)

| | | | | | | | |
|--|---------|---|-----------|--------------|--|--------------|--------------------------|
| 1. Incident Name: WIND COMPLEX | | 2. Operational Period: Date From: 10/14/17 Date To: 10/15/17 Time From: 0700 Time To: 0700 | | | 3. Branch: V - Cascade Div/Group: J / K Juliet | | |
| 4. Operations Personnel: Operations Section Chief: Mike Inman Night Ops: Abdul Ahmad Branch Director: Landon Haack Branch Safety: Barry Owens / Scott Wilson (T) Division/Group Supervisor: Dale Schmidt / Randy Northrup (T) | | | | | | | |
| 5. Resources Assigned: ** Resources Below in Bold are 12 Hour ** | | | | | Reporting Location, Special Equipment, Remarks, Notes, and Information Time Location | | |
| Resource Identifier | ALS | Leader | Personnel | Request # | | | |
| STB XFR 5006B | | Frenandez, Lupe | 19 | E-148 | 0700-0700 | DP 15 | |
| STC XSH 3150C | | Beck, Dennis J | 16 | E-248 | 0700-0700 | DP 15 | |
| ENG TNF 62 | | Boan, Wade | 5 | E-221 | 0700-1900 | DP 15 | |
| ENG TNF 71 | | Livezey, William Ty | 5 | E-222 | 0700-1900 | DP 15 | |
| ENG ENF 333 | | Duffle, Ben J | | E-160 | 0700-1900 | DP 15 | |
| CRW NEU WAR 4 | | Carter, Bryan W | 16 | C-37 | 0700-0700 | DP 15 | |
| CRW NEU WAR 5 | | Sauer, Chris | 16 | C-36 | 0700-0700 | DP 15 | |
| CRW2 ORS MOSQUEDA 2 | | Lightly, Aaron | 20 | C-61 | 0700-1900 | DP 15 | |
| CRW2 ORS INBOUND | | Nettleship, Ross | 20 | C-57 | 0700-1900 | DP 15 | |
| W/T PVT E-142 PJ AND R | | | 2 | E-142 | 0700-0700 | DP 15 | |
| W/T PVT E-151 NORM PAUL | | | 2 | E-151 | 0700-0700 | DP 15 | |
| FALM MODULE O-240 | | | 1 | O-240 | 0700-1900 | DP 15 | |
| | | | | | | | |
| | | | | | | | |
| | | | | | | | |
| | | | | | | | |
| | | | | | | | |
| | | | | | | | |
| | | | | | | | |
| 6. Work Assignments: Mop up 300' in from control lines and patrol Backhaul all trash to Drop Points Pull hose as needed | | | | | | | |
| 7. Special Instructions: FEMP SILVIA / FEMP ZAMORA will be shared throughout all of Branch V | | | | | | | |
| 8. Communications (radio and/or phone contact numbers needed for this assignment): | | | | | | | |
| Name | Ch | Function | Rx Freq | Rx Tone | Tx Freq | Tx Tone | Notes |
| CDF C2 | 1, 2, 3 | COMMAND | 151.2650 | 103.5 (T8) | 159.3300 | SEE ICS 205 | Tone 9, Tone 11, Tone 16 |
| VFIRE 25 | 8 | TACTICAL | 154.2875 | 156.7 (T6) | 154.2875 | 156.7 (T6) | |
| CALCORD | 14 | MEDICAL | 156.0750 | 156.7 (T6) | 156.0750 | 156.7 (T6) | |
| CDF T15 | 15 | AIR TO GROUND | 159.2700 | 192.8 (T16) | 159.2700 | 192.8 (T16) | |
| GUARD | 16 | EMERGENCY | 168.6250 | 0.0 | 168.6250 | 110.9 (T1) | |
| 9. Prepared by: Name: Keith Tsudama Pos/Title: RESL Signature:  | | | | | | | |
| ICS 204 | | Date/Time: 10/13/2017 2300 hours | | | | | |

ASSIGNMENT LIST (ICS 204)

| | | | | | | | |
|---|---------|---|-----------|--------------|--|--------------|--------------------------|
| 1. Incident Name: <p style="text-align: center;">WIND COMPLEX</p> | | 2. Operational Period: Date From: 10/14/17 Date To: 10/15/17 Time From: 0700 Time To: 0700 | | | 3. Branch: V - Cascade Div/Group: M / O <p style="text-align: center;">Mike</p> | | |
| 4. Operations Personnel: Operations Section Chief: Mike Inman Night Ops: Abdul Ahmad Branch Director: Landon Haack Branch Safety: Barry Owens / Scott Wilson (T) Division/Group Supervisor: Gene Neely | | | | | | | |
| 5. Resources Assigned: | | ** Resources Below in Bold are 12 Hour ** | | | Reporting Location, Special Equipment, Remarks, Notes, and Information Time Location | | |
| Resource Identifier | ALS | Leader | Personnel | Request # | Time | Location | |
| STC XTB 4234C | | Osburn, Kenneth | 22 | E-212 | 0700-0700 | DP 15 | |
| T/F OES 4801 | | Becker, Bill | 18 | E-203 | 0700-0700 | DP 15 | |
| ENG SNF 42 | | Ybarra, Juan M | 5 | E-264 | 0700-1900 | DP 15 | |
| ENG SNF 43 | | Talbott, Lyndon A. | 5 | E-265 | 0700-1900 | DP 15 | |
| STG NEU 9236G | | Nelson, Todd | 37 | C-64 | 0700-0700 | DP 15 | |
| W/T PVT E-155 H20 TO GO | | Wright, Junior | 2 | E-155 | 0700-0700 | DP 15 | |
| W/T PVT E-157 A&F | | Elliott, Howard | 2 | E-157 | 0700-0700 | DP 15 | |
| DOZ PNF 2 | | Collins, David | 3 | E-68 | 0700-1900 | DP 15 | |
| | | | | | | | |
| | | | | | | | |
| | | | | | | | |
| | | | | | | | |
| | | | | | | | |
| | | | | | | | |
| | | | | | | | |
| | | | | | | | |
| | | | | | | | |
| | | | | | | | |
| | | | | | | | |
| 6. Work Assignments: Mop up 300' in from control lines and patrol Backhaul all trash to Drop Points Pull hose as needed | | | | | | | |
| 7. Special Instructions: FEMP SILVIA / FEMP ZAMORA will be shared throughout all of Branch V | | | | | | | |
| 8. Communications (radio and/or phone contact numbers needed for this assignment): | | | | | | | |
| Name | Ch | Function | Rx Freq | Rx Tone | Tx Freq | Tx Tone | Notes |
| CDF C2 | 1, 2, 3 | COMMAND | 151.2650 | 103.5 (T8) | 159.3300 | SEE ICS 205 | Tone 9, Tone 11, Tone 16 |
| VFIRE 26 | 9 | TACTICAL | 154.3025 | 156.7(T6) | 154.3025 | 156.7 (T6) | |
| CALCORD | 14 | MEDICAL | 156.0750 | 156.7 (T6) | 156.0750 | 156.7 (T6) | |
| CDF T15 | 15 | AIR TO GROUND | 159.2700 | 192.8 (T16) | 159.2700 | 192.8 (T16) | |
| GUARD | 16 | EMERGENCY | 168.6250 | 0.0 | 168.6250 | 110.9 (T1) | |
| 9. Prepared by: Name: Keith Tsudama Pos/Title: RESL | | Date/Time: 10/13/2017 2300 hours | | Signature: | | | |
| ICS 204 | | | | | | | |


ASSIGNMENT LIST (ICS 204)

| | | | | | | | |
|--|---------|---|-----------------------------|-------------|---|---|--------------------------|
| 1. Incident Name: WIND COMPLEX | | 2. Operational Period: Date From: 10/14/17 Date To: 10/15/17 Time From: 0700 Time To: 0700 | | | 3. Branch: VII - LaPorte Div/Group: Q Quebec | | |
| 4. Operations Personnel: Operations Section Chief: Mike Inman Night Ops: Abdul Ahmad Branch Director: Sean Dakin Branch Safety: Barry Owens / Scott Wilson (T) Division/Group Supervisor: Sean Whalen (Day) / Pila Malolo (Night) | | | | | | | |
| 5. Resources Assigned: ** Resources Below in Bold are 12 Hour ** | | | | | Reporting Location, Special Equipment, Remarks, Notes, and Information | | |
| Resource Identifier | | ALS | Leader | Personnel | Request # | Time | Location |
| T/F WIND #2 | | | Childs, Meredith | 21 | E-9005 | 0700-1900 | DP 20 |
| ENG NEU 2364 | | | Chizek, Mickey | 3 | E-322 | 0700-0700 | DP 20 |
| ENG NEU 2372 | | | Romero, Rueben | 3 | E-228 | 0700-0700 | DP 20 |
| ENG PNF 332 | | | Wells, Jennifer | 5 | E-158 | 0700-1900 | DP 20 |
| CRW2 BITTERROOT | | | Michaliszyn, Matthew | 21 | C-46 | 0700-1900 | DP 20 |
| CRW2 ORS R&R | | | Rocha, Cristobal | 20 | C-58 | 0700-1900 | DP 20 |
| W/T PVT E-127 ALGERINE | | | Carne, Jim | 2 | E-127 | 0700-0700 | DP 20 |
| W/T PVT E-131 HARRIS | | | Enlow, Clancy | 2 | E-131 | 0700-0700 | DP 20 |
| W/T PVT E-292 TOUGH CO. | | | Ramon | 1 | E-292 | 0700-1900 | DP 20 |
| FEMP AIELLO O-176 | | ALS | Aiello, Christopher J | 1 | O-176 | 0700-0700 | DP 20 |
| FEMP ANDERSON O-179 | | ALS | Anderson, Brian J | 1 | O-179 | 0700-0700 | DP 20 |
| | | | | | | | |
| | | | | | | | |
| | | | | | | | |
| | | | | | | | |
| | | | | | | | |
| | | | | | | | |
| | | | | | | | |
| | | | | | | | |
| | | | | | | | |
| | | | | | | | |
| | | | | | | | |
| 6. Work Assignments: Mop up 300' in from control lines and patrol Backhaul all trash to Drop Points Pull hose as needed | | | | | | | |
| 7. Special Instructions: FEMP ANDERSON / FEMP AIELLO will be shared throughout all of Branch VII | | | | | | | |
| 8. Communications (radio and/or phone contact numbers needed for this assignment): | | | | | | | |
| Name | Ch | Function | Rx Freq | Rx Tone | Tx Freq | Tx Tone | Notes |
| CDF C2 | 1, 2, 3 | COMMAND | 151.2650 | 103.5 (T8) | 159.3300 | SEE ICS 205 | Tone 9, Tone 11, Tone 16 |
| NIFC T5 | 10 | TACTICAL | 166.7250 | 0.0 | 166.7250 | 0.0 | |
| CALCORD | 14 | MEDICAL | 156.0750 | 156.7 (T6) | 156.0750 | 156.7 (T6) | |
| CDF T15 | 15 | AIR TO GROUND | 159.2700 | 192.8 (T16) | 159.2700 | 192.8 (T16) | |
| GUARD | 16 | EMERGENCY | 168.6250 | 0.0 | 168.6250 | 110.9 (T1) | |
| 9. Prepared by: Name: | | Keith Tsudama | Pos/Title: | | RESL | Signature:  | |
| ICS 204 | | Date/Time: | | 10/13/2017 | 2300 hours | | |

ASSIGNMENT LIST (ICS 204)

| | | | | | | | |
|--|---|--|------------------------|--------------|-------------------|--------------|--------------------------|
| 1. Incident Name: <p style="text-align: center;">WIND COMPLEX</p> | 2. Operational Period: Date From: 10/14/17 Date To: 10/15/17 Time From: 0700 Time To: 0700 | 3. Branch: VII - LaPorte Div/Group: S <p style="text-align: center;">Sierra</p> | | | | | |
| 4. Operations Personnel: Operations Section Chief: Mike Inman Night Ops: Abdul Ahmad Branch Director: Sean Dakin Branch Safety: Barry Owens / Division/Group Supervisor: Matt Flock / Jason Mccarty (T) Scott Wilson (T) | | | | | | | |
| 5. Resources Assigned: | ** Resources Below in Bold are 12 Hour ** | Reporting Location, Special Equipment, Remarks, Notes, and Information Time Location | | | | | |
| Resource Identifier | ALS | Leader | Personnel | Request # | | | |
| ENG NEU 2351 | | Marshall, Travis J | 3 | E-217 | 0700-0700 | DP 20 | |
| ENG NEU 2361 | | Wilson, Richard | 3 | E-225 | 0700-0700 | DP 20 | |
| ENG SNF 52 | | Bethel, Ritter G | 5 | E-263 | 0700-1900 | DP 20 | |
| ENG5 ARCADIA 442 | | Cirksena, Randall | 4 | E-279 | 0700-1900 | DP 20 | |
| ENG6 SPA 2064 | | Chavez, Justin | 3 | E-269 | 0700-1900 | DP 20 | |
| ENG6 62 | | Allen, Peter | 3 | E-270 | 0700-1900 | DP 20 | |
| CRW2 ORS MQ FRANCO 1 | | Hernandez , Rodrigo | 20 | C-52 | 0700-1900 | DP 20 | |
| CRW2 ORS MQ FRANCO 2 | | Franco, Florencio | 16 | C-53 | 0700-1900 | DP 20 | |
| W/T PVT E-129 KULIKOV | | | 2 | E-129 | 0700-0700 | DP 20 | |
| W/T PVT E-132 HARRIS | | Mcgary, John | 2 | E-132 | 0700-0700 | DP 20 | |
| W/T PVT E-291 TOUGH CO. | | Conner, Wayne | 2 | E-291 | 0700-0700 | DP 20 | |
| | | | | | | | |
| | | | | | | | |
| | | | | | | | |
| | | | | | | | |
| | | | | | | | |
| | | | | | | | |
| | | | | | | | |
| | | | | | | | |
| | | | | | | | |
| | | | | | | | |
| | | | | | | | |
| | | | | | | | |
| | | | | | | | |
| | | | | | | | |
| | | | | | | | |
| 6. Work Assignments: | | | | | | | |
| Mop up 300' in from control lines and patrol | | | | | | | |
| Backhaul all trash to Drop Points | | | | | | | |
| Pull hose as needed | | | | | | | |
| 7. Special Instructions: | | | | | | | |
| FEMP ANDERSON / FEMP AIELLO will be shared throughout all of Branch VII | | | | | | | |
| 8. Communications (radio and/or phone contact numbers needed for this assignment): | | | | | | | |
| Name | Ch | Function | Rx Freq | Rx Tone | Tx Freq | Tx Tone | Notes |
| CDF C2 | 1, 2, 3 | COMMAND | 151.2650 | 103.5 (T8) | 159.3300 | SEE ICS 205 | Tone 9, Tone 11, Tone 16 |
| NIFC T5 | 10 | TACTICAL | 166.7250 | 0.0 | 166.7250 | 0.0 | |
| CALCORD | 14 | MEDICAL | 156.0750 | 156.7 (T6) | 156.0750 | 156.7 (T6) | |
| CDF T15 | 15 | AIR TO GROUND | 159.2700 | 192.8 (T16) | 159.2700 | 192.8 (T16) | |
| GUARD | 16 | EMERGENCY | 168.6250 | 0.0 | 168.6250 | 110.9 (T1) | |
| 9. Prepared by: Name: | | Keith Tsudama | Pos/Title: RESL | | Signature: | | |
| ICS 204 | | Date/Time: 10/13/2017 2300 hours | | | | | |

ASSIGNMENT LIST (ICS 204)

| | | | | | | | |
|---|---------|---|-----------|--------------|--|--------------|--------------------------|
| 1. Incident Name: WIND COMPLEX | | 2. Operational Period: Date From: 10/14/17 Date To: 10/15/17 Time From: 0700 Time To: 0700 | | | 3. Branch: VII - LaPorte Div/Group: U Uniform | | |
| 4. Operations Personnel: Operations Section Chief: Mike Inman Night Ops: Abdul Ahmad Branch Director: Sean Dakin Branch Safety: Barry Owens / Scott Wilson (T) Division/Group Supervisor: Steven Swaney / Michael Alforque (T) | | | | | | | |
| 5. Resources Assigned: | | ** Resources Below in Bold are 12 Hour ** | | | Reporting Location, Special Equipment, Remarks, Notes, and Information Time Location | | |
| Resource Identifier | ALS | Leader | Personnel | Request # | | | |
| ENG BTU 2168 | | York, Peter | 4 | E-309 | 0700-0700 | DP 20 | |
| ENG BTU 2169 | | Hawkins, Jason | 3 | E-307 | 0700-0700 | DP 20 | |
| ENG SUNDANCE 301 | | Munro, Peter | 3 | E-268 | 0700-1900 | DP 20 | |
| ENG TNF 341 | | Holloway, Christopher J | 7 | E-216 | 0700-1900 | DP 20 | |
| ENG TMU 341 | | King, Ted | | E-159 | 0700-1900 | DP 20 | |
| ENG5 HIGHLANDS 147 | | Ortega, Enrique | 4 | E-277 | 0700-1900 | DP 20 | |
| ENG5 NES 246 | | Bryant, Matthew D | 4 | E-278 | 0700-1900 | DP 20 | |
| ENG5 NES DNR | | Body, Darcy | 4 | E-280 | 0700-1900 | DP 20 | |
| ENG6 327 | | Hall, David | 3 | E-271 | 0700-1900 | DP 20 | |
| CRW2 PANHANDLE | | Cody, Griffin | 21 | C-45 | 0700-1900 | DP 20 | |
| CRW2 PAT RICK 20A | | Barrett, Daniel | 16 | C-47 | 0700-1900 | DP 20 | |
| CRW2 ORS MOSQUEDA 1 | | Mosqueda, Francisco | 20 | C-59 | 0700-1900 | DP 20 | |
| W/T PVT E-57 SPIT FIRE | | Florence, Bruce | 2 | E-57 | 0700-0700 | DP 20 | |
| W/T PVT E-134 EL DORADO | | Starks, Erik | 2 | E-134 | 0700-0700 | DP 20 | |
| W/T PVT E-135 J & M | | Duncan, Jack | 2 | E-135 | 0700-0700 | DP 20 | |
| W/T PVT E-137 DAVIS | | Franks, Steve | 2 | E-137 | 0700-0700 | DP 20 | |
| 6. Work Assignments: Mop up 300' in from control lines and patrol Backhaul all trash to Drop Points Pull hose as needed | | | | | | | |
| 7. Special Instructions: FEMP ANDERSON / FEMP AIELLO will be shared throughout all of Branch VII | | | | | | | |
| 8. Communications (radio and/or phone contact numbers needed for this assignment): | | | | | | | |
| Name | Ch | Function | Rx Freq | Rx Tone | Tx Freq | Tx Tone | Notes |
| CDF C2 | 1, 2, 3 | COMMAND | 151.2650 | 103.5 (T8) | 159.3300 | SEE ICS 205 | Tone 9, Tone 11, Tone 16 |
| NIFC T6 | 11 | TACTICAL | 166.7750 | 0.0 | 166.7750 | 0.0 | |
| CALCORD | 14 | MEDICAL | 156.0750 | 156.7 (T6) | 156.0750 | 156.7 (T6) | |
| CDF T15 | 15 | AIR TO GROUND | 159.2700 | 192.8 (T16) | 159.2700 | 192.8 (T16) | |
| GUARD | 16 | EMERGENCY | 168.6250 | 0.0 | 168.6250 | 110.9 (T1) | |
| 9. Prepared by: Name: Keith Tsudama Pos/Title: RESL Signature:  | | | | | | | |
| ICS 204 | | Date/Time: 10/13/2017 | | 2300 hours | | | |

ASSIGNMENT LIST (ICS 204)

| | | | | | | | |
|---|---------|---|-----------|--------------|--|-------------|--------------------------|
| 1. Incident Name: WIND COMPLEX | | 2. Operational Period: Date From: 10/14/17 Date To: 10/15/17 Time From: 0700 Time To: 0700 | | | 3. Branch: Div/Group: Fire Suppression Repair 1 of 2 | | |
| 4. Operations Personnel: Operations Section Chief: Mike Inman Night Ops: Abdul Ahmad Branch Director: Division/Group Supervisor: Jack Harvey | | | | | | | |
| 5. Resources Assigned: | | ** Resources Below in Bold are 12 Hour ** | | | Reporting Location, Special Equipment, Remarks, Notes, and Information Time Location | | |
| Resource Identifier | ALS | Leader | Personnel | Request # | | | |
| CRW2 FCF 11B | | Dennis, Josh | 20 | C-44 | 0700-1900 | ICP | |
| CRW2 P.R. REFORESTATION | | Hernandez, Eladio | 20 | C-60 | 0700-1900 | ICP | |
| DOZ PVT E-79 J. DEPUE | | Depue, Jaired | 1 | E-79 | 0700-1900 | ICP | |
| DOZ PVT E-235 GRAHAM | | Graham, Clayton | 1 | E-235 | 0700-1900 | ICP | |
| DOZ PVT E-238 SILLER | | Cummings, Terry | 1 | E-238 | 0700-1900 | ICP | |
| DOZ PVT E-334 RIDGE LOGGING | | Landingham, Darrell | 2 | E-334 | 0700-1900 | ICP | |
| W/T PVT E-125 FIRELINE | | | 1 | E-125 | 0700-1900 | ICP | |
| W/T PVT E-130 HARRIS | | Zuurbier, John | 1 | E-130 | 0700-1900 | ICP | |
| W/T PVT E-133 ALAN'S | | Logue, Ricki | 1 | E-133 | 0700-1900 | ICP | |
| EXC PVT E-323 WALBERG | | Brunelle, Robert | 1 | E-323 | 0700-1900 | ICP | |
| EXC PVT E-324 BYERS | | Byers, Cameron | 1 | E-324 | 0700-1900 | ICP | |
| EXC PVT E-325 A & F | | Fourine, Dan | 1 | E-325 | 0700-1900 | ICP | |
| CHIP | | | | | 0700-1900 | ICP | |
| SKD | | | | | 0700-1900 | ICP | |
| HEQB RUSHDOONY O-286 | | Rushdoony, Issac | 1 | O-286 | 0700-1900 | ICP | |
| HEQB RATCLIFF O-446 | | Ratcliff, Richard | 1 | O-446 | 0700-1900 | ICP | |
| HEQB MENDEZ | | | 1 | | 0700-1900 | ICP | |
| HEQB KIELHORN | | | 1 | | 0700-1900 | ICP | |
| 6. Work Assignments: Identify and repair fire suppression damage per the Fire Suppression Repair plan | | | | | | | |
| 7. Special Instructions: **All resources in Fire Suppression Repair are on a 12-hour shift ** | | | | | | | |
| 8. Communications (radio and/or phone contact numbers needed for this assignment): | | | | | | | |
| Name | Ch | Function | Rx Freq | Rx Tone | Tx Freq | Tx Tone | Notes |
| CDF C2 | 1, 2, 3 | COMMAND | 151.2650 | 103.5 (T8) | 159.3300 | SEE ICS 205 | Tone 9, Tone 11, Tone 16 |
| NIFC T7 | 12 | TACTICAL | 168.2500 | 0.0 | 168.2500 | 0.0 | |
| CALCORD | 14 | MEDICAL | 156.0750 | 156.7 (T6) | 156.0750 | 156.7 (T6) | |
| CDF T15 | 15 | AIR TO GROUND | 159.2700 | 192.8 (T16) | 159.2700 | 192.8 (T16) | |
| GUARD | 16 | EMERGENCY | 168.6250 | 0.0 | 168.6250 | 110.9 (T1) | |
| 9. Prepared by: Name: Keith Tsudama | | Pos/Title: RESL | | Signature: | | | |
| ICS 204 | | Date/Time: 10/13/2017 2300 hours | | | | | |

| | | | | |
|--------------------------------|---|------------------------------|------------------------------|---|
| MEDICAL PLAN ICS 206 | 1. INCIDENT NAME Wind Complex | 2. DATE PREPARED 10-13-17 | 3. TIME PREPARED 1700 hrs | 4. OPERATIONAL PERIOD 10/14/17 – 10/15/17 0700 - 0700 |
|--------------------------------|---|------------------------------|------------------------------|---|



| 5. INCIDENT MEDICAL AID STATIONS | | | |
|----------------------------------|-----------|------------|----|
| MEDICAL AID STATIONS | LOCATION | PARAMEDICS | |
| | | YES | NO |
| Medical Supplies | Base Camp | | X |
| MERT w/treatment | Base Camp | | X |

| 6. TRANSPORTATION | | | | |
|-------------------------|-----------------------------------|----------------|------------|----|
| A. AMBULANCE SERVICES | | | | |
| NAME | LOCATION | PHONE | PARAMEDICS | |
| | | | YES | NO |
| Sierra Nevada Ambulance | 155 Glasson Way, Grass Valley, CA | (530) 274-6001 | X | |
| Bi-County Ambulance | 1700 Poole Blvd, Yuba City, CA | (530) 682-1848 | X | |
| GUARD 840 24hr hoist | Mather Air Base (Local ECC) | (408) 472-1613 | X | |
| CALSTAR | 13750 Lincoln Way, Auburn, CA | (888) 692-6692 | X | |

| B. INCIDENT AMBULANCES | | | |
|---------------------------|--|------------|----|
| NAME | LOCATION | PARAMEDICS | |
| | | YES | NO |
| Bi-County Ambulance M-114 | Fire Station 61 (Loma Rica) LaPorte-Cascade Fire | X | |
| Sierra Nevada Ambulance | 911 Contract for McCourtney and Lobo Fires | X | |

| 7. HOSPITALS | | | | | | | | |
|---------------------------------|------------------------------------|-------------|------|----------------|---------|----|-------------|----|
| NAME | ADDRESS | TRAVEL TIME | | PHONE | HELIPAD | | BURN CENTER | |
| | | AIR | GRND | | YES | NO | YES | NO |
| Sierra Nevada Hospital | 155 Glasson Way, Grass Valley | 10 | 40 | (530) 274-6001 | X | | | X |
| Sutter Roseville Medical Center | 1 Medical Plaza Dr, Roseville | 25 | 90 | (916) 781-1811 | X | | | X |
| Rideout Hospital | 726 4 th St, Marysville | 15 | 45 | (530) 749-4300 | | X | | X |
| UC Davis Medical Center | 2315 Stockton Blvd, Sacramento | 45 | 120 | (916) 734-3636 | X | | X | |

| 8. MEDICAL EMERGENCY PROCEDURES | |
|--|---|
| <p>EMERGENCY FREQUENCY: AIR GUARD</p> <p>LINE EMERGENCY: Crew Supervisor will contact Division Supervisor with patient complaint/condition and location.</p> <ul style="list-style-type: none"> Division/Group Supervisor contacts: <ol style="list-style-type: none"> Closest EMS resource Communications Communications contacts: <ol style="list-style-type: none"> Ground or Air ambulance as requested Operations Safety Medical Unit Division Supervisor or designee will serve as point of contact and run medical emergency on assigned channel. <ol style="list-style-type: none"> A pre-assigned tactical frequency (i.e. CALCORD) should be used for IW1 and only for duration of need. Communications will clear command channel for emergency traffic as needed and only for duration of need. <p>CAMP EMERGENCY: Contact Communications for 911 response following local procedures.</p> <ul style="list-style-type: none"> Communications contacts: <ol style="list-style-type: none"> Medical Unit Leader <ul style="list-style-type: none"> -Crew Supervisor -Logistics -Comps/Claims Safety | <p align="center"><u>INJURY REPORTING PROCEDURES</u></p> <p>NATURE OF INJURY _____</p> <p>LOCATION OF PATIENT _____</p> <p>POINT OF CONTACT _____</p> <p>TRANSPORTATION REQUESTED BY: AIR ___ GROUND ___</p> <p>POINT OF PICKUP _____</p> <p>LAT _____ LONG _____</p> <p>PATIENT UNIT ID _____</p> <p>IS AN EMT WITH PATIENT: YES ___ NO ___</p> <p>AGE _____</p> <p>SEX: MALE ___ FEMALE ___</p> <p align="center">ALL EMERGENCIES---Secure the area and identify witnesses for later investigation. Keep an accurate log of events.</p> |

| | | |
|----------------------------------|---|--|
| ICS 206 (Rev 03/12) FR | 9. PREPARED BY: (Medical Unit Leader) Justin VanderHulst (MEDL) | 10. REVIEWED BY: (Safety Officer) |
| |  |  |

ICS 205 - INCIDENT RADIO COMMUNICATIONS PLAN

| | | |
|---|--|---|
| 1. Incident Name: <h2 style="text-align: center;">WIND COMPLEX</h2> | 2. Date/Time Prepared Date: 10/13/2017 Time: 1800 | 3. Operational Period: Date To: 10/14/2017 Time To: 0700 |
|---|--|---|

| Controlled Unclassified Information//Basic | | | | | | | | |
|--|-----------------------|------------|----------------------|----------|-------------|----------|-------------|---------------------------|
| Ch# | Function | Name | Assigned To | Rx Freq | Rx Tone | Tx Freq | Tx Tone | Notes |
| 1 | COMMAND | CDF CMD 2 | INCIDENT WIDE | 151.2650 | 103.5 (T8) | 159.3300 | 100.0 (T9) | TONE 9 - OREGON PEAK |
| 2 | COMMAND | CDF CMD 2 | INCIDENT WIDE | 151.2650 | 103.5 (T8) | 159.3300 | 114.8 (T11) | TONE 11 - ALDER SPRINGS |
| 3 | COMMAND | CDF CMD 2 | INCIDENT WIDE | 151.2650 | 103.5 (T8) | 159.3300 | 192.8 (T16) | TONE 16 - WOLF MTN |
| 4 | TACTICAL | CDF TAC 1 | BRANCH II DIV B | 151.2575 | 192.8 (T16) | 151.2575 | 192.8 (T16) | |
| 5 | TACTICAL | CDF TAC 24 | BRANCH II DIV D | 151.3175 | 192.8 (T16) | 151.3175 | 192.8 (T16) | |
| 6 | TACTICAL | CDF TAC 31 | BRANCH II DIV F | 159.3825 | 192.8 (T16) | 159.3825 | 192.8 (T16) | |
| 7 | TACTICAL | VFIRE 24 | BRANCH V DIV H | 154.2725 | 156.7 (T6) | 154.2725 | 156.7 (T6) | |
| 8 | TACTICAL | VFIRE 25 | BRANCH V DIV J/K | 154.2875 | 156.7 (T6) | 154.2875 | 156.7 (T6) | |
| 9 | TACTICAL | VFIRE 26 | BRANCH V DIV M/O | 154.3025 | 156.7 (T6) | 154.3025 | 156.7 (T6) | |
| 10 | TACTICAL | NIFC TAC 5 | BRANCH VII DIV Q & S | 166.7250 | 0.0 | 166.7250 | 0.0 | |
| 11 | TACTICAL | NIFC TAC 6 | BRANCH VII DIV U | 166.7750 | 0.0 | 166.7750 | 0.0 | |
| 12 | TACTICAL | NIFC TAC 7 | FIRE SUPP REPAIR | 168.2500 | 0.0 | 168.2500 | 0.0 | |
| 13 | | | | | | | | |
| 14 | EMS COORDINATION | CALCORD | INCIDENT WIDE | 156.0750 | 156.7 (T6) | 156.0750 | 156.7 (T6) | |
| 15 | AIR TO GROUND | CDF T15 | INCIDENT WIDE | 159.2700 | 192.8 (T16) | 159.2700 | 192.8 (T16) | ALL BRANCHES IN COMPLEX |
| 16 | EMERGENCY ONLY | AIR GUARD | INCIDENT WIDE | 168.6250 | 0.0 | 168.6250 | 110.9 (T1) | GPH/DPH, 16 CH RADIOS |
| 17 | | | | | | | | |
| 18 | | | | | | | | |
| 19 | | | | | | | | |
| 20 | EMERGENCY ONLY | AIR GUARD | INCIDENT WIDE | 168.6250 | 0.0 | 168.6250 | 110.9 (T1) | GPH/DPH CMD, 20 CH RADIOS |

Controlled Unclassified Information//Basic

Use the ICS 205 to reference and to correlate with the ICS 204's depending on your work assignments

| | |
|--|--|
| 6. Prepared by (Communications Unit Leader): Name: John Aguilera, COML IMT #2 | Signature:  |
| Date/Time: 10/13/17 1800 | |

Suppression Repair Message

The following are repair tasks that crews can conduct as available on the fireline.

Handlines

- Install waterbreaks when necessary to prevent erosion.
- Handlines along the contour, on ridge tops or other flat areas will not require waterbreaks if the line will not concentrate water runoff.
- Waterbreaks on handlines shall be cut a minimum of 6 inches into firm ground and shall have an unobstructed discharge at the outlet.
- Remove all trash from the lines so it can be backhauled.

Dozer Lines

- Move hose lines to one side of the line so that it can be accessed and repaired by equipment if necessary.
- Install waterbreaks as feasible focusing on very steep areas first.

Roads

- Remove berms from outside of roads.
- Clean Culvert inlets of debris from suppression activities.
- Clean inside ditches of debris from suppression activities.

General Repair Items

- Report any damage to property including gates, fences, water sources, culverts or any other damage caused by suppression activities.
- Remove all trash generated by the incident.

| | | | | |
|-----------------------------------|-------------|--------------|---------------|----------------|
| • Fireline and Road Gradient (%): | <u>0-10</u> | <u>11-25</u> | <u>26-50*</u> | <u>>50*</u> |
| Fireline waterbreak spacing | 150' | 100 | 75'-50' | 50'-25' |
| Road waterbreak spacing | 150' | 100 | 75'-50' | N/A' |

Fire Suppression Repair

It is time to begin planning for the fire suppression repair efforts. A fire suppression repair plan will be developed for the NEU Wind Incident. To accomplish our goals we need to identify problem areas, prescribe the needed work, and ensure that the work is completed.

In an effort to identify problem areas we have created the attached form for use by the Branches and Divisions. As noted on the form, items to consider include: fences and gates damaged during the incident; road and watercourse crossings repairs; culverts and watercourses needing cleanout; fire breaks in need of waterbarring; trash and equipment pickup.

Use the attached form(s) to document locations where repair work may be necessary. Use maps to show locations. GPS's can be down loaded by GIS. Return forms to the Suppression Repair Unit at the end of your shift.

Fire Suppression Repair Checklist CA-NEU-026295

Fire Name: Wind Complex Form Preparer _____

Division _____ Date Prepared _____

| <u>Work Needed</u> | <u>Location</u> <u>(T./R./S.)</u> |
|---|--------------------------------------|
| Fence/Gate Repair _____ | _____ |
| Waterbars _____ | _____ |
| Road Repair _____ | _____ |
| Watercourse Cleanout _____ | _____ |
| Culvert Cleanout and Repair _____ | _____ |
| Seeding/Mulching Watercourse Crossing _____ | _____ |
| Trash Pickup _____ | _____ |
| Other _____ | _____ |

NOTE: List type of material/equipment/personnel needed (e.g., fencing materials, tools, dozer, backhoe, stakeside, handcrew, etc.)



WIND COMPLEX PUBLIC INFORMATION



Incident Information Line: 530-823-4083

Media Line: 916-203-4153

MEDIA

California State Penal Code Section 409.5(d) allows the news media to enter scenes of disaster, riot, or civil disturbance. Properly identified members of the news media should not be restricted from entering the locations specified within the code, even if the area presents a danger to them. Media members should be advised of the nature of possible danger. Members of the media do not have the right to access crime scenes or any area where their presence may interfere with incident operations, mitigation or evidence collection.

- The media may only access private property with the property owner's permission. Fire personnel cannot provide members of the media with authorization to enter private property.
- If approached and questioned by the media and/or the public, talk about your assignment or task at hand. If need be, direct the questioning party to the incident PIO.
- Do not speculate or give opinions
- There is no such thing as an "off the record" comment.

CAL FIRE SOCIAL MEDIA POLICY (Social Media 0691)

Social Media is increasingly being used by public agencies and the media as well as the public. This form of communication continues to grow rapidly in order to supply the public's desire for instant information gratification. All personnel assigned to a CAL FIRE incident will adhere to the CAL FIRE Social Media Policy. Further information about the CAL FIRE Social Media Policy can be obtained from the Information Officer. If you are uncertain, please ask. **Do not post:**

- Inappropriate information, pictures or videos
- Opinions regarding the incident or policy
- Endorsements of any kind

PICTURES AND VIDEO OF INCIDENT

We are in a new era of media. Media no longer means the news/broadcast industry but now refers to anyone that has the capability to shoot video and or photographs and post them onto social media in a matter of minutes. Unfortunately we have seen some instances of video or photographs that have depicted unsafe, unprofessional or embarrassing circumstances which are a serious breach of ethics. When this happens it reflects poorly on all that are attached to this incident. Posting an inappropriate video, photo or blog comment could have unwanted effects. It may be unsafe to shoot photos or video and a firefighter who is concentrating on a camera can't be looking up, down and all around.

LOST AND FOUND

The Information staff will manage *Lost and Found* items for the incident. If you have lost an item, leave your contact information and what you have lost at the Information trailer. If you have found an item on the incident, bring the item to the Information trailer.

MAIL SERVICE

The Information staff will assist you in mailing and receiving letters and packages.

TRAINING SPECIALIST MESSAGE

Sunday, October 15th at 1500 hrs. is the deadline to close the training package for the Wind Complex Incident.

Regardless of home agency, in order to ensure incident documentation of any training assignment – You must close your assignment with the Training Specialist.

Bring a completed individual performance rating

**ICS 225/226 Taskbook/Qualifications card
And Evaluator's Recommendation
to the exit interview.**

Remember: NO DOCUMENTATION - IT DIDN'T HAPPEN!

Thank you

Claudia Soiza

949 632-7813

WIND COMPLEX FINANCE MESSAGE

COMP / CLAIMS

- Vehicles rented by CAL FIRE are considered department vehicles
- All accident reporting procedures must be followed, including reporting the accident to COMP/CLAIMS and SAFETY
- All required forms and documentation shall be completed and brought to COMP / CLAIMS

SHIFT TICKETS

- DIVS and OPBD must complete shift tickets for all hired equipment, including runners and fallers
- Turn completed shift tickets into **TIME UNIT** daily

OFF SITE FEEDING

- Resources staying in Rocklin or Roseville have authorization to feed off site, **(dinner only)**
- Follow Per diem rates, make the purchase and bring copies of receipts and AO 341 into Finance
- All other resources must feed in Base Camp

HIRED EQUIPMENT VENDORS

- Please bring your agreements into the **TIME UNIT** to start the documentation process

FEDERAL TIME KEEPERS

- Onsite and located in the finance shop

FINANCE CONTACTS

- **Comp/Claims 24/7 Phone: 925-407-6363**
- **Cal OES Rep, Chief Zander: 916-712-6771**
- **Finance Section Chief, Bill Winter, 805-903-3491**
- **Deputy Finance Section Chief, Dale Barnett, 530-524-5623**

SHIFT TICKET EXAMPLE

| EMERGENCY SHIFT TICKET and EVALUATION FORM | | | | | Contractor Name DOZER DUDE | |
|--|-------------|---------------------------------------|---------------------------------|-----------------|--|-----------------------------------|
| Incident or Project Name Wind complex | | Incident Number CANEU 26295 | Request Number E# 123 | | Operator #1 Chucke Carroll | Operator #2 Bill Winter |
| Agreement Number XXX - 000000 - 00 | | | | | | |
| Equipment Make CAT | | Equipment Model / Type D6XM | | | | |
| Serial Number 111111 | | Licence Number 111111 | | | | |
| Equipment Use (Circle) Hours Days / Miles | | | | | | |
| Date Mo / Day | Start | Stop | Work | Assignment | | |
| 8/3 | 0700 | 2400 | 17 | DIV M | | |
| 8/4 | 0001 | 0700 | 7 | DIV M | | |
| Remarks/Comments ** TWO OPERATORS NO DAMAGE/ NO CLAIMS | | | | | | |
| Vendor Rating Poor* Avg. Good Exc. N/A | | | | | Govt. Rep. Name and Position - PRINT Jason Marsh | |
| Met Performance Expectations Equipment in Safe Working Condition | | | | | Govt. Rep. Signature <i>Jason Marsh</i> | |
| Operator Skill Level | | | | | Contractor Signature <i>Chucke Carroll</i> | |
| Operates Safely | | | | | Date 08/04/15 | |
| Operator's Cooperation Level | | | | | Time 0800 | |
| Overall Performance | | | | | Calfire 297 (Rev 3-2011) | |
| * NOTE: Any rating of POOR requires an explanation in Comment Section. **Final evaluation or for more documentation, use an ICS Form 230 or equivalent. | | | | | | |
| Pink - Finance | | Blue - Home Unit HE Coordinator | | Yellow - Vendor | | White - Govt Representative |

| EMERGENCY SHIFT TICKET and EVALUATION FORM | | | | | Contractor Name EXCAVATOR COMPANY | |
|--|-------------|---|-----------------------------------|------------------|--|-----------------------------|
| The responsible Government Officer will complete this form each shift | | | | | | |
| Incident or Project Name PONDEROSA FIRE | | Incident Number CABTU013737 | Request Number E # Here | | Operator #1 Bob Smith | Operator #2 |
| Agreement Number XXX - 000000 - 00 | | | | | | |
| Equipment Make CAT | | Equipment Model / Type EXCAVATOR F900 | | | | |
| Serial Number 1XP3ESMP14239012 | | Licence Number 9999999 | | | | |
| Equipment Use (Circle) Hours Days / Miles | | | | | | |
| Date Mo / Day | Start | Stop | Work | Assignment | | |
| 8/3 | 0001 | 700 | 7 | OFF SHIFT | | |
| 8/3 | 0700 | 1900 | 12 | DIV M | | |
| 8/3 | 1900 | 2400 | 5 | OFF SHIFT | | |
| Remarks/Comments ** 1 OPERATOR NO DAMAGE/ NO CLAIMS | | | | | | |
| Vendor Rating Poor* Avg. Good Exc. N/A | | | | | Govt. Rep. Name and Position - PRINT Jason Marsh | |
| Met Performance Expectations Equipment in Safe Working Condition | | | | | Govt. Rep. Signature <i>Jason Marsh</i> | |
| Operator Skill Level | | | | | Contractor Signature <i>Bob Smith</i> | |
| Operates Safely | | | | | Date 08/04/15 | |
| Operator's Cooperation Level | | | | | Time 0800 | |
| Overall Performance | | | | | Calfire 297 (Rev 3-2011) | |
| * NOTE: Any rating of POOR requires an explanation in Comment Section. **Final evaluation or for more documentation, use an ICS Form 230 or equivalent. | | | | | | |
| Pink - Finance | | Blue - Home Unit HE Coordinator | | Yellow - Vendor | | White - Govt Representative |

Turn shift tickets into Finance.



WIND COMPLEX PUBLIC INFORMATION



Incident Information Line: 530-823-4083

Media Line: 916-203-4153

MEDIA

California State Penal Code Section 409.5(d) allows the news media to enter scenes of disaster, riot, or civil disturbance. Properly identified members of the news media should not be restricted from entering the locations specified within the code, even if the area presents a danger to them. Media members should be advised of the nature of possible danger. Members of the media do not have the right to access crime scenes or any area where their presence may interfere with incident operations, mitigation or evidence collection.

- The media may only access private property with the property owner's permission. Fire personnel cannot provide members of the media with authorization to enter private property.
- If approached and questioned by the media and/or the public, talk about your assignment or task at hand. If need be, direct the questioning party to the incident PIO.
- Do not speculate or give opinions
- There is no such thing as an "off the record" comment.

CAL FIRE SOCIAL MEDIA POLICY (Social Media 0691)

Social Media is increasingly being used by public agencies and the media as well as the public. This form of communication continues to grow rapidly in order to supply the public's desire for instant information gratification. All personnel assigned to a CAL FIRE incident will adhere to the CAL FIRE Social Media Policy. Further information about the CAL FIRE Social Media Policy can be obtained from the Information Officer. If you are uncertain, please ask. **Do not post:**

- Inappropriate information, pictures or videos
- Opinions regarding the incident or policy
- Endorsements of any kind

PICTURES AND VIDEO OF INCIDENT

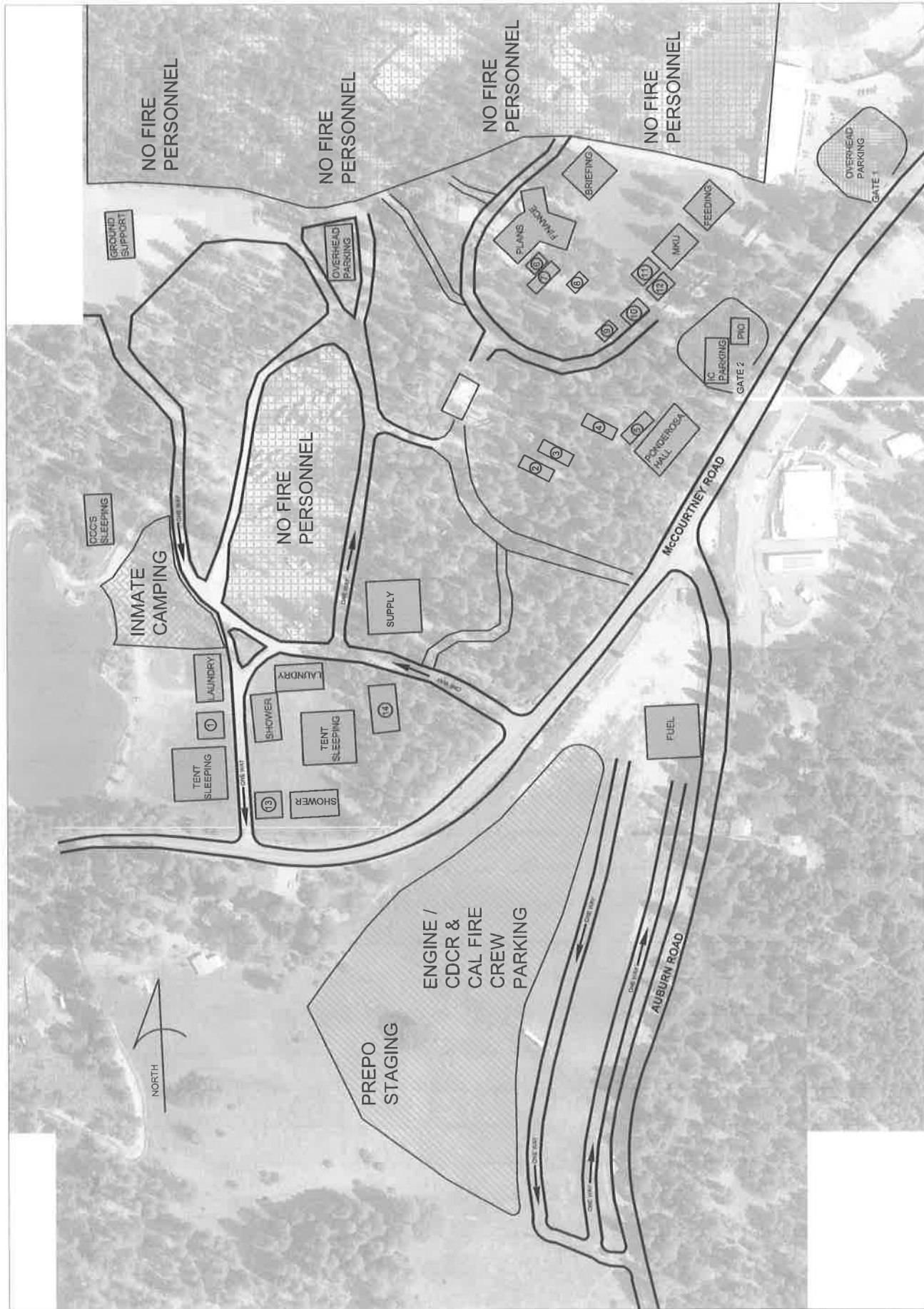
We are in a new era of media. Media no longer means the news/broadcast industry but now refers to anyone that has the capability to shoot video and or photographs and post them onto social media in a matter of minutes. Unfortunately we have seen some instances of video or photographs that have depicted unsafe, unprofessional or embarrassing circumstances which are a serious breach of ethics. When this happens it reflects poorly on all that are attached to this incident. Posting an inappropriate video, photo or blog comment could have unwanted effects. It may be unsafe to shoot photos or video and a firefighter who is concentrating on a camera can't be looking up, down and all around.

LOST AND FOUND

The Information staff will manage *Lost and Found* items for the incident. If you have lost an item, leave your contact information and what you have lost at the Information trailer. If you have found an item on the incident, bring the item to the Information trailer.

MAIL SERVICE

The Information staff will assist you in mailing and receiving letters and packages.



**BASE CAMP MAP
WIND COMPLEX
CA-NEU-026295**

- ① INMATE SHOWERS
- ② FACILITIES
- ③ LOGISTICS
- ④ MOTELS / ORDERING
- ⑤ IC TRAILER

- ⑥ GIS
- ⑦ CLERICAL
- ⑧ COMM
- ⑨ LIASON / SAFETY
- ⑩ OPS

- ⑪ MEDICAL
- ⑫ MEDL
- ⑬ DUMPSTER
- ⑭ ICE / WATER & LUNCHES



TRAVEL MAP

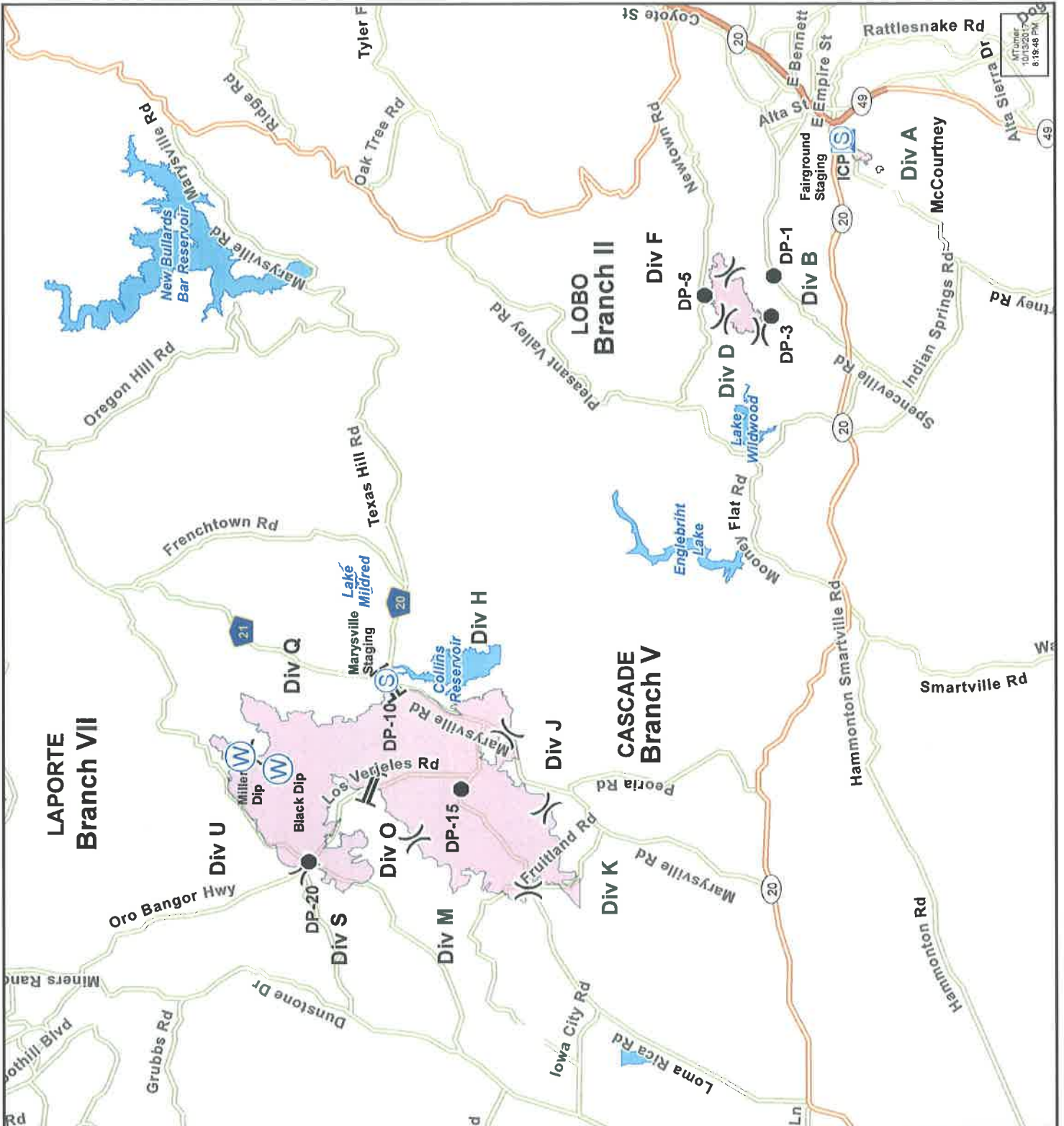
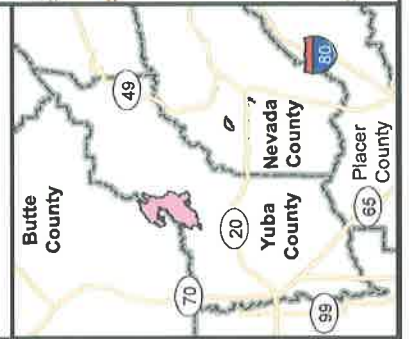
Wind Complex

CA-NEU-026295

10/14/2017

- Drop Point
- Incident Command Post
- Spot Fire
- Staging Area
- Water Source
- Division
- Branch

- Uncontrolled Fire Edge
- Completed Line
- Interstates
- Highways
- Major Roads
- Ramps
- Water Features



MTJ:ner
10/14/17
8:18:48 PM

UNIT LOG (ICS 214)

1. Incident Name: WIND COMPLEX **2. Operational Period:** Date From: 10/14/17 Date To: 10/15/17
Time From: 0700 Time To: 0700

3. Unit Name/Designators **4. Unit Leader (Name and ICS Position)**

| 5. Personnel Assigned/Designators | | |
|-----------------------------------|--------------|-----------|
| NAME | ICS POSITION | HOME BASE |
| | | |
| | | |
| | | |
| | | |
| | | |
| | | |
| | | |
| | | |
| | | |
| | | |
| | | |
| | | |
| | | |
| | | |
| | | |
| | | |
| | | |
| | | |
| | | |
| | | |

| 6. Activity Log (Continue on Reverse) | |
|---------------------------------------|--------------|
| TIME | MAJOR EVENTS |
| | |
| | |
| | |
| | |
| | |
| | |
| | |
| | |
| | |
| | |
| | |
| | |
| | |
| | |
| | |
| | |
| | |
| | |
| | |

7. Prepared By: _____ **Date/Time:** _____

