

* Corrected *

WIND COMPLEX

CA-NEU-026295

INCIDENT ACTION PLAN



OPERATIONAL PERIOD

10/15/2017 - 10/16/2017

0700 - 0700



The first part of the document discusses the importance of maintaining accurate records of all transactions. It emphasizes that every entry should be supported by a valid receipt or invoice. This not only helps in tracking expenses but also ensures compliance with tax regulations.

In the second section, the author provides a detailed breakdown of the monthly budget. It includes categories for housing, utilities, food, and entertainment. Each category is further divided into sub-items, such as rent, electricity, groceries, and dining out. This level of detail allows for a clear understanding of where the money is being spent.


The third section focuses on the analysis of the budget. It compares the actual spending against the planned budget for each month. Any variances are noted and explained, such as an increase in utility costs due to a change in weather or a decrease in food expenses due to a change in eating habits.

Finally, the document concludes with a summary of the overall financial performance. It highlights the areas where the budget was followed closely and identifies areas for improvement in the future. The author suggests that regular budget reviews and adjustments are essential for maintaining financial stability.

INCIDENT OBJECTIVES (ICS 202)

1. Incident Name: <p style="text-align: center;">WIND COMPLEX</p>	2. Operational Period:	Date From: 10/15/2017 Time From: 0700	Date To: 10/16/2017 Time To: 0700
3. Objective(s): <u>Management Objectives:</u> -Provide for emergency personnel and public safety at all times. -Protect property, improvements, and infrastructure. -Ensure repopulation takes place in a quick, efficient, and effective manner. -Ensure coordinated, timely and accurate release of public information. -Foster and maintain relationships with all cooperators and stakeholders. -Protect economic, natural, cultural and heritage resources. -Maintain fiscal accountability and keep costs commensurate with values at risk.			
<u>Control Objectives:</u> All Branches and Fires: -Keep the fire within the established perimeter			
General Situational Awareness: Long shifts, draw down of resources, high likelihood for strong winds and new IA starts.			
5. Site Safety Plan Required?		Yes <input type="checkbox"/> No <input checked="" type="checkbox"/>	
Approved Site Safety Plan(s) Located at:			
6. Incident Action Plan			
<input checked="" type="checkbox"/> ICS 203 <input checked="" type="checkbox"/> Weather Forecast <input checked="" type="checkbox"/> Fire Behavior <input checked="" type="checkbox"/> Safety Message <input checked="" type="checkbox"/> ICS-215a	<input checked="" type="checkbox"/> ICS 204 <input checked="" type="checkbox"/> ICS 220 <input checked="" type="checkbox"/> ICS 206 <input checked="" type="checkbox"/> ICS 205 <input checked="" type="checkbox"/> Suppression Repair Plan	<input checked="" type="checkbox"/> Demob Plan <input checked="" type="checkbox"/> Training Specialist <input checked="" type="checkbox"/> Finance Message <input checked="" type="checkbox"/> Shift Ticket Example <input checked="" type="checkbox"/> PIO Message	<input checked="" type="checkbox"/> Transportation Map <input checked="" type="checkbox"/> Base Camp Map <input checked="" type="checkbox"/> ICS 214 <input type="checkbox"/> <input type="checkbox"/>
7. Prepared By: Andy Murphy	Position/Title: PSC	Signature:	
8. Approved by Incident Commander:	Glenn Patterson	Signature:	
ICS 202			

ORGANIZATION ASSIGNMENT LIST (ICS 203)

1. Incident Name: WIND COMPLEX		2. Operational Period: Date From: 10/15/2017		Date To: 10/16/2017	
		Time From: 0700		Time To: 0700	
3. Incident Commander(s) and Command Staff:			7. Operation Section:		
IC/UC's	Glenn Patterson / Dave Allen (T)		Chief	Mike Inman	
Deputy	Ron Myers		Deputy	Mark Brunton	
Safety Officer	Steve Walker / Chad Thompson (T)		Night Ops	Abdul Ahmad	
Information Officer	Ron Oatman / Jeremy Rahn				
Liaison Officer	Mike Martin / John McCammon		Branch		
Law Enforcement Liaison	Kevin Pack / John Davis		Division/Group	A	
			Division/Group		
4. Agency/Organization Representatives:			Branch	II - Lobo	
Agency/Organization	Name	Division/Group	B	Jim Smith	
Yuba County Sheriff	Sgt. Smith	Division/Group	D	Tom Morgan (12-Hour)	
Butte County Sheriff	Lt. Smith	Division/Group	F	Lee Nelson (Day) / David Larson (Night)	
Nevada County Sheriff	Capt. Pettitt	Division/Group			
Red Cross	Artena Moon	Branch	V - Cascade	Matt Wallen (12-Hour)	
C.H.P.	Lt. Steffenson	Division/Group	H / J / K	Mark Rothlisberger	
PG&E	Rob Cone	Division/Group	M / O	Sean Whalen (Day) / Pila Malolo (Night)	
CDCR	Lt. Hill	Division/Group			
Cal OES	Corey Zander	Division/Group			
Nev. County Animal Evac	Bill Alexander	Branch	VII - LaPorte	Garrett Sjolund (12-Hour)	
Cal Trans	Shelly Pangman	Division/Group	Q	Darren Bakken	
USFS	Shelly Allen	Division/Group	S / U	Mike Stewart / Matt Bergstrand (T)	
CCC	Angel Parga	Division/Group			
		Division/Group			
		Branch			
5. Planning Section:			Division/Group	Fire Suppression Repair	Jack Harvey
Chief	Andy Murphy		Division/Group		
Deputy	Jeff Windham		Branch		
Resource Unit	Keith Tsudama / Andy Hubbs / Roger Noon		Staging Area		
Situation Unit	Rob Clark / Dan Brown		Division/Group		
Documentation Unit	Katherine Gault		Division/Group		
Demobilization Unit	Ryan Villarino		Branch		
GISS	Fred Postler		Division/Group		
FBAN	Todd Hopkins		Division/Group		
IMET	Mike Smith		Division/Group		
Training Tech Spec	Claudia Soiza		Division/Group		
Fire Suppression Repair	Jack Harvey		Air Operations Branch	Director:	Rob Sonsteng
6. Logistics Section			Air Support Grp Sup		
Chief	Ken Lowe / Milford Ferguson		Helibase Manager	Byron Vance	
Supply Unit	Matt Siebecke				
Facilities Unit	Devon Ellsworth / Scott Irvine		8. Finance/Administration Section:		
Ground Support Unit	Tom Stroing		Chief	Bill Winter / Dale Barnett	
Hired Equipment Tech	Jason Marsh		Time Unit	Chuckie Carroll / Andre Schmidt (T)	
Communications Unit	John Aguilera		Procurement Unit	Jason McDermott / Sandra Jewel (T)	
Medical Unit	Matt Lathrop / Justin Vanderhulst		Comp/Claims Unit	Joe Ekblad	
Motel Tech Spec	Paul Pumarajo		Cost Unit	Jennifer Fagen / Michelle Patton (T)	
Prepared By: Name:	Andy Murphy	Position/Title:	PSC	Signature:	
ICS 203		Date/Time:	10/14/2017 2300 hours		



INCIDENT Weather Forecast



FORECAST NO: 4

NAME OF FIRE: NEU Wind Complex

PREDICTION FOR: SUN Day/Night SHIFT

UNIT: NEU

SHIFT DATE: Oct. 15/16 2017

SIGNED: Mike Smith *Mike Smith*

TIME AND DATE

Incident Meteorologist

FORECAST ISSUED: 1900 10/14/17

...Breezy northeast winds and poor RH recovery during the early morning hours...

WEATHER DISCUSSION: Warm and very dry conditions are expected over the next couple of days as an upper level high pressure ridge centers over the west coast. Winds should remain mainly terrain driven although this morning may see slightly breezier than normal conditions. Overall, winds should be northeasterly in the nighttime and morning hours and westerly in the afternoon. Humidity values both day and night will be quite low. RH values in some areas today and Monday could get down to single digits in the afternoons. The warm airmass under the high pressure ridge will also bring slightly warmer than normal temperatures for this time of year. Slightly cooler temperatures and more moderate humidity are expected going into mid week as the upper ridge begins to break down.

WEATHER FORECAST:

WEATHER: Sunny Skies

TEMPERATURES: High temperatures 76 to 81.

HUMIDITY: Minimum humidity 9 to 14% after poor overnight recovery of 25-35%

20 FT WINDS:

ABOVE 1000 FT ELEV - Northeast winds 2-5 mph with occasional gusts to 10 mph in the early morning hours. Winds becoming southwest to northwest 2-5 mph after about noon with occasional gusts to 12 mph in the afternoon.

BELOW 1000 FT ELEV - Northeast 2-5 mph in the morning hours becoming southwest to northwest 2-5 mph after about noon. Occasional gusts to 12 mph in the afternoon.

STABILITY/INVERSION: Weak inversions in the morning. Stable conditions through the afternoon.

OUTLOOK FOR SUNDAY Night: Fair skies. Shallow inversions settling in after 2000 with patchy smoke. Minimum temperatures 51-56. Continued very poor humidity recovery at 25-35%. Winds becoming light after sunset then northeast 2-5 mph after about 2000. Some gusts to 8 mph after midnight.

OUTLOOK FOR MONDAY: Fair skies. Highs 77-82. Minimum RH 9-14%. Winds northeast 2-5 mph in the morning becoming light and variable around noon then west 2-5 mph in the afternoon. Some gusts to 12 mph in the late afternoon.

EXTENDED FORECAST OUTLOOK FOR TUESDAY: Fair skies. Temperatures cooling slightly. Slightly higher humidity. Winds remaining mainly terrain dominated.

EXTRA INFORMATION: Sunrise: 7:16

Sunset: 6:26

FIRE BEHAVIOR FORECAST

FORECAST NUMBER: 006	TYPE OF FIRE: Wildfire
FIRE NAME: Wind Complex	OPERATIONAL PERIOD: 10/15/2017 0700-0700
DATE ISSUED: October 14, 2017	TIME ISSUED: 1900
UNIT: CA-NEU-026295	SIGNED: <i>Todd Hopkin</i>
Typed/printed: Todd Hopkins (FBAN)	

INPUTS

WEATHER SUMMARY: See Attached Spot Weather Forecast

Breezy northeast winds and poor RH recovery during the early morning hours

WEATHER: Day: Sunny skies Night: Fair skies, weak inversion

TEMPERATURES / HUMIDITY: Day: 76-81 F Max Temperature / Min Humidity: 9%-14%
 Night: Min Temperature 51-56 F / Max Humidity: 25%-35%

20 FT WINDS: Day: ABOVE 1000 FT ELEV - Northeast winds 2-5 mph with gusts to 10 mph early morning
 Winds southwest to northwest 2-5 mph with gusts to 12 mph

BELOW 1000 FT ELEV - Northeast 2-5 mph in morning becoming southwest to northwest
 2-5 mph after noon. Occasional gust to 12 mph in the afternoon

Night: Winds becoming light after sunset then northeast 2-5 mph after about 2000. Some gusts to
 8 mph after midnight

OUTPUTS

FIRE BEHAVIOR

GENERAL: The fires were burning in a mix of grass and brush with stands of timber and timber litter that are extremely dry and have a heavy fuel loading. The initial fire spread was driven by high winds and low humidity with long range spotting. Smoldering fuels are likely to be seen in the area over the next week. Although no active fire is expected inside the fire perimeter, fuels are still extremely dry with the low humidity making them receptive to ember casts.

Probability of Ignition: 87%
 100 HRFM: 90th Percentile

FDFM: 3%
 LAL: 1

ERC: 65 (77 90th Percentile)
 1000 HRFM: Near 90th Percentile

SPECIFIC: * RATES OF SPREAD AND FLAME LENGTHS ARE FOR NEW STARTS *****

	Rate of Spread (ft/min)		Flame Length (in feet)		Spotting Distance
	Head	Flank	Head	Flank	
Grass	Head	24-100	Head	5-13	500 feet to 1/4 mile
	Flank	4-17	Flank	2-6	
	Backing	2-9	Backing	2-4	
Brush	Head	40-80	Head	14-21	500 feet to 1/4 mile
	Flank	7-13	Flank	6-9	
	Backing	4-7	Backing	5-7	
Timber Litter	Head	5-9	Head	2-6	500 feet to 1/4 mile
	Flank	1-2	Flank	1-3	
	Backing	Less than 1	Backing	1-2	

AIR OPERATIONS:

Weak inversions over the fires in the early mornings
 Sunrise: 0715 Sunset: 1824

SAFETY

- New fires can grow rapidly in light flashy fuels.
- Exceptionally dry fuels warrant a high degree of caution.
- Don't become complacent! Identify your safety zones and escape routes.



WIND COMPLEX SAFETY MESSAGE

We are ALL accountable for SAFE behaviors

INCIDENT: Wind Complex CA-NEU-026295

DATE: October 15, 2017 TIME: 0700-0700

Situational Awareness at All Times!

When It comes to Safety, the only thing worse than being oblivious to the unknown is ignoring the obvious...

Driving: Slow Down! Drive defensively. Expect the unexpected around every curve. Drive with headlights and seatbelts on. Coordinate your movements on one-lane roads.

Personnel: Manage yourself and those around you for fatigue. Drink fluids frequently and eat nutritious food regularly. As fatigue increases, injuries tend to increase also. Keep an eye on your crew and partner. Stay engaged and make smart decisions.

Heavy Equipment – Stay alert working around heavy equipment working in the area, monitor safe working distances, utilize communication with heavy equipment operators (radio or hand signals), avoid working below dozers, watch for rolling material.

Mop Up: Conduct a thorough briefing for all personnel. Use all PPE, including eye protection. Maintain proper spacing. Be alert for stump holes. Evaluate unburned islands and stay alert.

Complacency: All PPE must be worn when working on the fire line. Mop up requires your situational awareness even without active fire. Unburned fuels can re-ignite suddenly and turn against you.

Hazard trees: Survey your work areas for hazard trees, flag and restrict access, use only qualified personnel for tree felling. Dead trees from bug kill. Review and follow **Hazard Tree Safety**, pg. 22-23 in your IRPG.

Review your ICS 206 and know what to do in the event of an (IWI).

Lookouts, **C**ommunications, **E**scape routes, **S**afety zones

Tailgate Safety

- **Accountability:** everyone checks in and everyone checks out. Supervisors know where their crews are at all times
- **Communication:** everyone knows the com-plan
- **Briefing:** everyone knows the plan and the contingency plan
- **Safety gear:** everyone has the appropriate safety gear in good working condition
- **LCES:** they are clear and made known to everyone

Fire Suppression Repair

Stay alert working around heavy equipment:

- Utilize communication with heavy equipment operators (radio or hand signals).
- Monitor safe working distances
- Avoid working below dozers, watch for rolling material.
- Maintain accountability of personnel

Incident Safety Officer: Chad Thompson

Incident Commander: Glenn Patterson



WIND COMPLEX INCIDENT RISK ANALYSIS (ICS 215a)

DIV	HAZARDOUS ACTIONS/CONDITIONS	MITIGATIONS / WARNINGS / REMEDIES
ALL	DRIVING HAZARDS	<p>Slow Down!</p> <p>Drive defensively! Expect the unexpected around every curve.</p> <p>Drive with headlights and seatbelts on.</p> <p>Narrow dirt roads with limited passing room, coordinate your movements.</p> <p>Civilians are still in the Evacuation Order areas.</p> <p>Use warning devices when operating near traffic.</p>
ALL	MOP UP/BACK HAUL	<p>Conduct thorough briefing for all personnel (inside rear cover of IRPG)</p> <p>Use all PPE, including eye protection. Be alert for stump holes and root cavities</p> <p>Minimize exposure to smoke and rotate personnel into clean environment as practical</p> <p>Back haul all trash and equipment off the line and return it to base camp.</p> <p>When lifting equipment, lift with your legs and not your back.</p>
ALL	FATIGUE	<p>Be alert for signs of fatigue and take breaks as necessary.</p> <p>Monitor incoming resources for level of fatigue. Drink water before, during and after shifts, up to 1.5 gal. per shift. Rest when you can.</p> <p>Be alert for signs of heat stress in yourself and others; use the buddy system.</p> <p>Eat small meals often and when possible</p> <p>Drink electrolyte drinks at a 3 water to 1 sport drink ratio.</p>
ALL	COMMUNICATIONS	<p>Monitor for changes in the communications plan. Review ICS 205 in your IAP.</p> <p>Monitor command, tactical, and air to ground frequencies.</p>
ALL	HEAVY EQUIPMENT	<p>Watch for rolling material. Monitor safe working distances.</p> <p>Avoid working below Dozers. Maintain Situational awareness around heavy equipment.</p> <p>Utilize communication with the operator (radio or hand signals)</p>
ALL	HAZARD TREES	<p>Identify and Isolate the area to provide for the safety of others.</p> <p>Flag and make proper notifications. Many pockets of dead trees.</p> <p>Do Not Fall trees out of your certification level.</p>
ALL	LINE CONSTRUCTION	<p>Conduct thorough briefing for all personnel (inside rear cover IRPG).</p> <p>Ensure LCES in place prior to engagement (IRPG p. 7).</p> <p>Establish adequate safety zones (IRPG p.8).</p> <p>Use Downhill Line Checklist (IRPG p. 9).</p> <p>Follow "Look Up, Look Down, Look Around" procedures (IRPG p. 3-4).</p> <p>Utilize Risk Management Process (IRPG p.1).</p>
ALL	POWER LINES	<p>Follow <i>Power Line Safety</i> guidelines (IRPG pg.24.)</p> <p>Communicate power line hazards to immediate supervisor and hazard flag accordingly.</p> <p>Flag area around downed power lines and deny access.</p> <p>Treat all downed power lines as energized.</p>
ALL	MARIJUANA GROW OPERATIONS	<p>Use extreme caution on grow sites. Do not enter.</p> <p>Hazardous chemicals associated with growing operation.</p>
ALL	SITUATIONAL AWARENESS	<p>Do not become complacent during operations</p> <p>Anticipate possibility of new starts. Monitor work / cycles.</p>
Incident Name: Wind Complex CA-NEU-026295 ICS 215a		<p>DATE PREPARED: October 14, 2017 1800hrs</p> <p>Prepared by: Chad Thompson, Team 2 SOF(T)</p>
		<p>OPERATIONAL PERIOD October 15, 2017 0700-0700</p>


ASSIGNMENT LIST (ICS 204)

1. Incident Name: WIND COMPLEX		2. Operational Period: Date From: 10/15/17 Date To: 10/16/17 Time From: 0700 Time To: 0700				3. Branch: V - Cascade Div/Group: H/J/K Hotel 1 of 2	
4. Operations Personnel: Operations Section Chief: Mike Inman Night Ops: Abdul Ahmad Branch Director: Matt Wallen (12-Hour) Branch Safety: Ryan Danielsen (T) Division/Group Supervisor: Mark Rotlisberger							
5. Resources Assigned:		** Resources Below in Bold are 12 Hour **				Reporting Location, Special Equipment, Remarks, Notes, and Information Time Location	
Resource Identifier	ALS	Leader	Personnel	Request #			
STC XCA 4063C		Dickinson, Richard	19	E-88	0700-0700	DP 15	
T/F WIND #2		Childs, Meredith	21	E-9005	0700-1900	DP 15	
ENG4 SWAN VALLEY		Pruett, Ken	3	E-275	0700-1900	DP 15	
ENG8 SES E249		Chambers, Scott	4	E-281	0700-1900	DP 15	
ENG8 CTF 671		Smith, Jesse E	3	E-272	0700-1900	DP 15	
ENG8 CTF E611		Erickson, Jesse	3	E-273	0700-1900	DP 15	
ENG8 MCN B61		Pickering, Dale	3	E-274	0700-1900	DP 15	
ENG8 MCN B62		Johnston, Ellis	3	E-276	0700-1900	DP 15	
ENG NEU 2365			4	E-162	0700-0700	DP 15	
ENG NEU 2371		Harcourt, Wesley	3	E-58	0700-0700	DP 15	
ENG NEU 2381			3	E-164	0700-0700	DP 15	
ENG SNF 312		Seymour, Michael D	5	E-286	0700-1900	DP 15	
ENG SNF 313		Sharpe, Andrew G	5	E-262	0700-1900	DP 15	
CRW NEU WAR 4		Carter, Bryan W	16	C-37	0700-1900	DP 15	
CRW NEU WAR 5		Sauer, Chris	16	C-36	0700-1900	DP 15	
CRW2 FCF 11A		Bird, Andrew	20	C-43	0700-1900	DP 15	
CRW2 ORS INBOUND		Nettleship, Ross	20	C-57	0700-1900	DP 15	
CRW2 ORS MOSQUEDA 2		Lightly, Aaron	20	C-61	0700-1900	DP 15	
6. Work Assignments: Mop up 300' in from control lines and patrol Backhaul all trash to Drop Points Pull hose as needed							
7. Special Instructions: FEMP GREGORY / FEMT DEMERS shared throughout all of Branch V							
8. Communications (radio and/or phone contact numbers needed for this assignment):							
Name	Ch	Function	Rx Freq	Rx Tone	Tx Freq	Tx Tone	Notes
CDF C2	1, 2, 3	COMMAND	151.2650	103.5 (T8)	159.3300	SEE ICS 205	Tone 9, Tone 11, Tone 16
VFIRE 24	7	TACTICAL	154.2725	156.7 (T6)	154.2725	156.7(T6)	
CALCORD	14	MEDICAL	156.0750	156.7 (T6)	156.0750	156.7 (T6)	
CDF T15	15	AIR TO GROUND	159.2700	192.8 (T16)	159.2700	192.8 (T16)	
GUARD	16	EMERGENCY	168.6250	0.0	168.6250	110.9 (T1)	
9. Prepared by: Name:		Keith Tsudama		Pos/Title: RESL		Signature:	
ICS 204		Date/Time: 10/14/2017		2300 hours			

ASSIGNMENT LIST (ICS 204)

1. Incident Name: WIND COMPLEX		2. Operational Period: Date From: 10/15/17 Date To: 10/16/17 Time From: 0700 Time To: 0700				3. Branch: VII - LaPorte Div/Group: Q Quebec 1 of 2	
4. Operations Personnel: Operations Section Chief: Mike Inman Night Ops: Abdul Ahmad Branch Director: Garrett Sjolund (12-Hour) Branch Safety: Ryan Danielsen (T) Division/Group Supervisor: Darren Bakken							
5. Resources Assigned:		** Resources Below in Bold are 12 Hour **				Reporting Location, Special Equipment, Remarks, Notes, and Information Time Location	
Resource Identifier	ALS	Leader	Personnel	Request #			
ENG BTU 2154		Seaton, Michael	3	E-308	0700-1900	DP 20	
ENG BTU 2160		Peery, Jonathan	3	E-310	0700-1900	DP 20	
ENG BTU 2165 24 off		Fleming, Kevin	6	E-308	0700-1900	DP 20	
ENG BTU 2187			3	*	0700-0700	DP 20	
ENG NEU 2362		Yurek, Brandon	3	E-229	0700-1900	DP 20	
ENG NEU 2363		Hancock, Corey	4	E-219	0700-0700	DP 20	
ENG NEU 2364 24 off		Chizek, Mickey	3	E-322	0700-1900	DP 20	
ENG NEU 2383		Mckeown, Kevin	3	E-228	0700-0700	DP 20	
ENG TMU 341		King, Ted		E-159	0700-1900	DP 20	
ENG TNF 341		Holloway, Christopher J	7	E-216	0700-1900	DP 20	
ENG5 ARCADIA 442		Cirksena, Randall	4	E-279	0700-1900	DP 20	
ENG6 SPA 2064		Chavez, Justin	3	E-289	0700-1900	DP 20	
CRW2 BITTERROOT		Michallezyn, Matthew	21	C-46	0700-1900	DP 20	
CRW2 PAT RICK 20A		Barrett, Daniel	16	C-47	0700-1900	DP 20	
CRW2 ORS R&R		Rocha, Cristobal	20	C-58	0700-1900	DP 20	
W/T PVT E-127 ALGERINE		Came, Jim	2	E-127	0700-0700	DP 20	
W/T PVT E-131 HARRIS		Enlow, Clancy	2	E-131	0700-0700	DP 20	
W/T PVT E-157 A&F		Elliott, Howard	2	E-157	0700-0700	DP 20	
6. Work Assignments: Mop up 300' in from control lines and patrol Backhaul all trash to Drop Points Pull hose as needed							
7. Special Instructions: FEMP LESIEUR / FEMT GARCIA to be shared throughout all of Branch VII							
8. Communications (radio and/or phone contact numbers needed for this assignment):							
Name	Ch	Function	Rx Freq	Rx Tone	Tx Freq	Tx Tone	Notes
CDF C2	1, 2, 3	COMMAND	151.2650	103.5 (T8)	159.3300	SEE ICS 205	Tone 9, Tone 11, Tone 16
NIFC T5	10	TACTICAL	166.7250	0.0	166.7250	0.0	
CALCORD	14	MEDICAL	156.0750	156.7 (T8)	156.0750	156.7 (T8)	
CDF T15	15	AIR TO GROUND	159.2700	192.8 (T16)	159.2700	192.8 (T16)	
GUARD	16	EMERGENCY	168.6250	0.0	168.6250	110.9 (T1)	
9. Prepared by: Name:		Keith Tsudama		Pos/Title: RESL		Signature:	
ICS 204		Date/Time: 10/14/2017		2300 hours			

ASSIGNMENT LIST (ICS 204)

1. Incident Name: WIND COMPLEX		2. Operational Period: Date From: 10/15/17 Date To: 10/16/17 Time From: 0700 Time To: 0700			3. Branch: VII - LaPorte Div/Group: S / U Sierra		
4. Operations Personnel: Operations Section Chief: Mike Inman Night Ops: Abdul Ahmad Branch Director: Garrett Sjolund (12-Hour) Branch Safety: Ryan Danielsen (T) Division/Group Supervisor: Mike Stewart / Matt Bergstrand (T)							
5. Resources Assigned:		** Resources Below in Bold are 12 Hour **			Reporting Location, Special Equipment, Remarks, Notes, and Information Time Location		
Resource Identifier	ALS	Leader	Personnel	Request #			
ENG NEU 2362		Rouse, Andrew	4	E-223	0700-0700	DP 20	
ENG BTU 2169		Hawkins, Jason	3	E-307	0700-1900	DP 20	
ENG NEU 2362		Baker, Jacob	3	E-227	0700-0700	DP 20	
ENG NEU 2393		Mathiasen, Anna	3	E-190	0700-0700	DP 20	
ENG SNF 82		Bethel, Ritter G	5	E-263	0700-1900	DP 20	
ENG SUNDANCE 301		Munro, Peter	3	E-268	0700-1900	DP 20	
ENG5 HIGHLANDS 147		Ortega, Enrique	4	E-277	0700-1900	DP 20	
ENG5 NES 246		Bryant, Matthew D	4	E-278	0700-1900	DP 20	
ENG5 NES DNR		Body, Darcy	4	E-280	0700-1900	DP 20	
ENG6 327		Hall, David	3	E-271	0700-1900	DP 20	
ENG6 62		Allen, Peter	3	E-270	0700-1900	DP 20	
CRW2 PANHANDLE		Gody, Griffin	21	C-45	0700-1900	DP 20	
CRW2 ORS MQ FRANCO 1		Hernandez, Rodrigo	20	C-52	0700-1900	DP 20	
CRW2 ORS MQ FRANCO 2		Franco, Florencio	16	C-53	0700-1900	DP 20	
CRW2 ORS MOSQUEDA 1		Mosqueda, Francisco	20	C-59	0700-1900	DP 20	
W/T PVT E-57 SPIT FIRE		Florence, Bruce	2	E-57	0700-0700	DP 20	
W/T PVT E-129 KULIKOV			2	E-129	0700-0700	DP 20	
6. Work Assignments: Mop up 300' in from control lines and patrol Backhaul all trash to Drop Points Pull hose as needed							
7. Special Instructions: FEMP LESIEUR / FEMT GARCIA to be shared throughout all of Branch VII							
8. Communications (radio and/or phone contact numbers needed for this assignment):							
Name	Ch	Function	Rx Freq	Rx Tone	Tx Freq	Tx Tone	Notes
CDF C2	1, 2, 3	COMMAND	151.2650	103.5 (T8)	159.3300	SEE ICS 205	Tone 9, Tone 11, Tone 16
NIFC T6	11	TACTICAL	166.7750	0.0	166.7750	0.0	
CALCORD	14	MEDICAL	156.0750	156.7 (T6)	156.0750	156.7 (T6)	
CDF T15	15	AIR TO GROUND	159.2700	192.8 (T16)	159.2700	192.8 (T16)	
GUARD	16	EMERGENCY	168.6250	0.0	168.6250	110.9 (T1)	
9. Prepared by: Name: Keith Tsudama Pos/Title: RESL Signature: 							
ICS 204		Date/Time: 10/14/2017		2300 hours			

MEDICAL PLAN ICS 206		1. INCIDENT NAME Wind Complex	2. DATE PREPARED 10-14-17	3. TIME PREPARED 1530 hrs	4. OPERATIONAL PERIOD 10/15/17 - 10/16/17 0700 - 0700					
5. INCIDENT MEDICAL AID STATIONS										
MEDICAL AID STATIONS		LOCATION			PARAMEDICS					
					YES		NO			
Medical Supplies		Base Camp			X					
6. TRANSPORTATION										
A. AMBULANCE SERVICES										
NAME		LOCATION		PHONE		PARAMEDICS				
						YES		NO		
Sierra Nevada Ambulance		155 Glasson Way, Grass Valley, CA		(530) 274-6001		X				
Bi-County Ambulance		1700 Poole Blvd, Yuba City, CA		(530) 682-1848		X				
GUARD 840 24hr hoist		Mather Air Base (Local ECC)		(408) 472-1613		X				
CALSTAR		13750 Lincoln Way, Auburn, CA		(888) 692-6692		X				
B. INCIDENT AMBULANCES										
NAME		LOCATION			PARAMEDICS					
					YES		NO			
Bi-County Ambulance		911 Contract for LaPorte-Cascade Fire			X					
Sierra Nevada Ambulance		911 Contract for McCourtney and Lobo Fires			X					
7. HOSPITALS										
NAME	ADDRESS		TRAVEL TIME		PHONE		HELIPAD		BURN CENTER	
			AIR	GRND			YES	NO	YES	NO
Sierra Nevada Hospital	155 Glasson Way, Grass Valley		10	40	(530) 274-6001		X			X
Sutter Roseville Medical Center	1 Medical Plaza Dr, Roseville		25	90	(916) 781-1811		X			X
Rideout Hospital	726 4 th St, Marysville		15	45	(530) 749-4300			X		X
UC Davis Medical Center	2315 Stockton Blvd, Sacramento		45	120	(916) 734-3636		X		X	
8. MEDICAL EMERGENCY PROCEDURES										
EMERGENCY FREQUENCY: AIR GUARD LINE EMERGENCY: Crew Supervisor will contact Division Supervisor with patient complaint/condition and location. <ul style="list-style-type: none"> Division/Group Supervisor contacts: <ol style="list-style-type: none"> Closest EMS resource Communications Communications contacts: <ol style="list-style-type: none"> Ground or Air ambulance as requested Operations Safety Medical Unit Division Supervisor or designee will serve as point of contact and run medical emergency on assigned channel. <ol style="list-style-type: none"> A pre-assigned tactical frequency (i.e. CALCORD) should be used for IWI and only for duration of need. Communications will clear command channel for emergency traffic as needed and only for duration of need. CAMP EMERGENCY: Contact Communications for 911 response following local procedures. <ul style="list-style-type: none"> Communications contacts: <ol style="list-style-type: none"> Medical Unit Leader <ul style="list-style-type: none"> -Crew Supervisor -Logistics -Comps/Claims Safety 					INJURY REPORTING PROCEDURES NATURE OF INJURY _____ LOCATION OF PATIENT _____ POINT OF CONTACT _____ TRANSPORTATION REQUESTED BY: AIR ___ GROUND ___ POINT OF PICKUP _____ LAT _____ LONG _____ PATIENT UNIT ID _____ IS AN EMT WITH PATIENT: YES ___ NO ___ AGE _____ SEX: MALE ___ FEMALE ___ ALL EMERGENCIES---Secure the area and identify witnesses for later investigation. Keep an accurate log of events.					
ICS 206 (Rev 03/12)		9. PREPARED BY: (Medical Unit Leader) Justin VanderHulst (MEDL)			10. REVIEWED BY: (Safety Officer)					

ICS 205 - INCIDENT RADIO COMMUNICATIONS PLAN

1. Incident Name: WIND COMPLEX

2. Date/Time Prepared Date: 10/14/2017 Time: 1800

3. Operational Period: Date From: 10/15/2017 Date To: 10/16/2017
Time From: 0700 Time To: 0700

4. Communications


Controlled Unclassified Information//Basic									
Ch#	Function	Name	Assigned To	Rx Freq	Rx Tone	Tx Freq	Tx Tone	Notes	
1	COMMAND	CDF CMD 2	INCIDENT WIDE	151.2650	103.5 (T8)	159.3300	100.0 (T9)	TONE 9 - OREGON PEAK	
2	COMMAND	CDF CMD 2	INCIDENT WIDE	151.2650	103.5 (T8)	159.3300	114.8 (T11)	TONE 11 - ALDER SPRINGS	
3	COMMAND	CDF CMD 2	INCIDENT WIDE	151.2650	103.5 (T8)	159.3300	192.8 (T16)	TONE 16 - WOLF MTN	
4	TACTICAL	CDF TAC 1	BRANCH II DIV B	151.2575	192.8 (T16)	151.2575	192.8 (T16)		
5	TACTICAL	CDF TAC 24	BRANCH II DIV D	151.3175	192.8 (T16)	151.3175	192.8 (T16)		
6	TACTICAL	CDF TAC 31	BRANCH II DIV F	159.3825	192.8 (T16)	159.3825	192.8 (T16)		
7	TACTICAL	VFIRE 24	BRANCH V DIV H/J/K	154.2725	156.7 (T6)	154.2725	156.7 (T6)		
8									
9	TACTICAL	VFIRE 26	BRANCH V DIV M/O	154.3025	156.7 (T6)	154.3025	156.7 (T6)		
10	TACTICAL	NIFC TAC 5	BRANCH VII DIV Q	166.7250	0.0	166.7250	0.0		
11	TACTICAL	NIFC TAC 6	BRANCH VII DIV S/U	166.7750	0.0	166.7750	0.0		
12	TACTICAL	NIFC TAC 7	FIRE SUPP REPAIR	168.2500	0.0	168.2500	0.0		
13									
14	EMS COORDINATION	CALCORD	INCIDENT WIDE	156.0750	156.7 (T6)	156.0750	156.7 (T6)		
15	AIR TO GROUND	CDF T15	INCIDENT WIDE	159.2700	192.8 (T16)	159.2700	192.8 (T16)	ALL BRANCHES IN COMPLEX	
16	EMERGENCY ONLY	AIR GUARD	INCIDENT WIDE	168.6250	0.0	168.6250	110.9 (T1)	GPH/DPH, 16 CH RADIOS	
17									
18									
19									
20	EMERGENCY ONLY	AIR GUARD	INCIDENT WIDE	168.6250	0.0	168.6250	110.9 (T1)	GPH/DPH CMD, 20 CH RADIOS	

5. Special Instructions

Controlled Unclassified Information//Basic

Use the ICS 205 to reference and to correlate with the ICS 204's depending on your work assignments

6. Prepared by (Communications Unit Leader): Name: John Aguilera, COML IMT #2

Signature: 

Date/Time: 10/14/17 1800

ICS 205

Fire Suppression Repair

It is time to begin planning for the fire suppression repair efforts. A fire suppression repair plan will be developed for the NEU Wind Incident. To accomplish our goals we need to identify problem areas, prescribe the needed work, and ensure that the work is completed.

In an effort to identify problem areas we have created the attached form for use by the Branches and Divisions. As noted on the form, items to consider include: fences and gates damaged during the incident; road and watercourse crossings repairs; culverts and watercourses needing cleanout; fire breaks in need of waterbarring; trash and equipment pickup.

Use the attached form(s) to document locations where repair work may be necessary. Use maps to show locations. GPS's can be down loaded by GIS. Return forms to the Suppression Repair Unit at the end of your shift.

Fire Suppression Repair Checklist CA-NEU-026295

Fire Name: Wind Complex Form Preparer _____

Division _____ Date Prepared _____

<u>Work Needed</u>	<u>Location</u> <u>(T./R./S.)</u>
Fence/Gate Repair _____	_____
Waterbars _____	_____
Road Repair _____	_____
Watercourse Cleanout _____	_____
Culvert Cleanout and Repair _____	_____
Seeding/Mulching Watercourse Crossing _____	_____
Trash Pickup _____	_____
Other _____	_____

NOTE: List type of material/equipment/personnel needed (e.g., fencing materials, tools, dozer, backhoe, stakeside, handcrew, etc.)

Suppression Repair Message

The following are repair tasks that crews can conduct as available on the fireline.

Handlines

- Install waterbreaks when necessary to prevent erosion.
- Handlines along the contour, on ridge tops or other flat areas will not require waterbreaks if the line will not concentrate water runoff.
- Waterbreaks on handlines shall be cut a minimum of 6 inches into firm ground and shall have an unobstructed discharge at the outlet.
- Remove all trash from the lines so it can be backhauled.

Dozer Lines

- Move hose lines to one side of the line so that it can be accessed and repaired by equipment if necessary.
- Install waterbreaks as feasible focusing on very steep areas first.

Roads

- Remove berms from outside of roads.
- Clean Culvert inlets of debris from suppression activities.
- Clean inside ditches of debris from suppression activities.

General Repair Items

- Report any damage to property including gates, fences, water sources, culverts or any other damage caused by suppression activities.
- Remove all trash generated by the incident.

• Fireline and Road Gradient (%):	<u>0-10</u>	<u>11-25</u>	<u>26-50*</u>	<u>>50*</u>
Fireline waterbreak spacing	150'	100	75'-50'	50'-25'
Road waterbreak spacing	150'	100	75'-50'	N/A'



DEMOBILIZATION INSTRUCTIONS

Wind Complex

CA-NEU-026295

DEMOB PROCEDURES

- CHECK THE DEMOB LIST EACH MORNING. YOU CAN FIND THE DEMOB LIST THROUGH THE “QR” CODE ON THE I.A.P. COVER OR ON LISTS POSTED THROUGHOUT CAMP. ONLY REPORT TO DEMOB AT YOUR SCHEDULED TIME. EARLY ADMITTANCE WILL NOT BE ALLOWED.
- REPORT TO DEMOB AT APPOINTMENT TIME TO RECEIVE A CHECKOUT FORM (ICS-221), THEN GO TO THE FOLLOWING UNITS TO OBTAIN THE NECESSARY SIGNATURES:

- ✓ SUPPLY UNIT
- ✓ COMMUNICATIONS UNIT
- ✓ GROUND SUPPORT/VEHICLE INSPECTION***
- ✓ DOCUMENTATION UNIT
- ✓ TIME UNIT
- ✓ TRAINING UNIT (IF APPLICABLE)
- ✓ ACCOMMODATIONS (IF APPLICABLE)

***VEHICLE INSPECTION:

- THE DEMOB UNIT WILL INFORM YOU IF THE VEHICLE NEEDS TO BE INSPECTED.
- YOU MUST HAVE THE ICS-221 DEMOB FORM WITH YOU AT VEHICLE INSPECTION.
- A VEHICLE INSPECTION TIME WILL BE PROVIDED WHEN YOU INITIALLY ARRIVE TO THE DEMOBILIZATION UNIT.
- **DO NOT REPORT FOR VEHICLE INSPECTION PRIOR TO YOUR APPOINTMENT**

VEHICLE INSPECTION LOCATION: IN CAMP

RETURN THE COMPLETED ICS-221 FORM TO THE DEMOB UNIT AND TRAVEL HOME SAFE!

TRAINING SPECIALIST MESSAGE

Today, Sunday October 15th at 1500 hrs. is the deadline to close the training package for the Wind Complex Incident.

Regardless of home agency, in order to ensure incident documentation of any training assignment – You must close your assignment with the Training Specialist.

Bring a completed individual performance rating

**ICS 225/226 Taskbook/Qualifications card
And Evaluator's Recommendation
to the exit interview.**

Remember: NO DOCUMENTATION - IT DIDN'T HAPPEN!

Thank you

Claudia Soiza

949 632-7813

WIND COMPLEX FINANCE MESSAGE

COMP / CLAIMS

- Vehicles rented by CAL FIRE are considered department vehicles
- All accident reporting procedures must be followed, including reporting the accident to COMP/CLAIMS and SAFETY
- All required forms and documentation shall be completed and brought to COMP / CLAIMS

SHIFT TICKETS

- DIVS and OPBD must complete shift tickets for all hired equipment, including runners and fallers
- Turn completed shift tickets into **TIME UNIT** daily

OFF SITE FEEDING

- Resources staying in Rocklin or Roseville have authorization to feed off site, **(dinner only)**
- Follow Per diem rates, make the purchase and bring copies of receipts and AO 341 into Finance
- All other resources must feed in Base Camp

HIRED EQUIPMENT VENDORS

- Please bring your agreements into the TIME UNIT to start the documentation process

FEDERAL TIME KEEPERS

- Onsite and located in the finance shop

FINANCE CONTACTS

- **Comp/Claims 24/7 Phone: 925-407-6363**
- **Cal OES Rep, Chief Zander: 916-712-6771**
- **Finance Section Chief, Bill Winter, 805-903-3491**
- **Deputy Finance Section Chief, Dale Barnett, 530-524-5623**

SHIFT TICKET EXAMPLE

EMERGENCY SHIFT TICKET and EVALUATION FORM					Contractor Name DOZER DUDE	
Incident or Project Name Wind complex		Incident Number CANEU 26295	Request Number E# 123		Operator #1 Chucke Carroll	Operator #2 Bill Winter
Agreement Number XXX - 000000 - 00						
Equipment Make CAT		Equipment Model / Type D6XM				
Serial Number 111111		Licence Number 111111				
Equipment Use (Circle) Hours Days / Miles						
Date Mo / Day	Start	Stop	Work	Assignment		
8/3	0700	2400	17	DIV M		
8/4	0001	0700	7	DIV M		
Remarks/Comments ** TWO OPERATORS NO DAMAGE/ NO CLAIMS						
Vendor Rating Poor* Avg. Good Exc. N/A						
Met Performance Expectations				Govt. Rep. Name and Position - PRINT Jason Marsh		
Equipment In Safe Working Condition				Govt. Rep. Signature <i>Jason Marsh</i>		
Operator Skill Level				Contractor Signature <i>Chucke Carroll</i>		
Operates Safely				Date 08/04/15		
Operator's Cooperation Level				Time 0800		
Overall Performance				Calfire 297 (Rev 3-2011)		
* NOTE: Any rating of POOR requires an explanation in Comment Section. **Final evaluation or for more documentation, use an ICS Form 230 or equivalent.						
Pink - Finance		Blue - Home Unit HE Coordinator		Yellow - Vendor		White - Govt Representative

EMERGENCY SHIFT TICKET and EVALUATION FORM					Contractor Name EXCAVATOR COMPANY	
The responsible Government Officer will complete this form each shift						
Incident or Project Name PONDEROSA FIRE		Incident Number CABTU013737	Request Number E # Here		Operator #1 Bob Smith	Operator #2
Agreement Number XXX - 000000 - 00						
Equipment Make CAT		Equipment Model / Type EXCAVATOR F900				
Serial Number 1XP3ESMP14239012		Licence Number 9999999				
Equipment Use (Circle) Hours Days / Miles						
Date Mo / Day	Start	Stop	Work	Assignment		
8/3	0001	700	7	OFF SHIFT		
8/3	0700	1900	12	DIV M		
8/3	1900	2400	5	OFF SHIFT		
Remarks/Comments ** 1 OPERATOR NO DAMAGE/ NO CLAIMS						
Vendor Rating Poor* Avg. Good Exc. N/A						
Met Performance Expectations				Govt. Rep. Name and Position - PRINT Jason Marsh		
Equipment In Safe Working Condition				Govt. Rep. Signature <i>Jason Marsh</i>		
Operator Skill Level				Contractor Signature <i>Bob Smith</i>		
Operates Safely				Date 08/04/15		
Operator's Cooperation Level				Time 0800		
Overall Performance				Calfire 297 (Rev 3-2011)		
* NOTE: Any rating of POOR requires an explanation in Comment Section. **Final evaluation or for more documentation, use an ICS Form 230 or equivalent.						
Pink - Finance		Blue - Home Unit HE Coordinator		Yellow - Vendor		White - Govt Representative

Turn shift tickets into Finance.



WIND COMPLEX PUBLIC INFORMATION



Incident Information Line: 530-823-4083

Media Line: 916-203-4153

MEDIA

California State Penal Code Section 409.5(d) allows the news media to enter scenes of disaster, riot, or civil disturbance. Properly identified members of the news media should not be restricted from entering the locations specified within the code, even if the area presents a danger to them. Media members should be advised of the nature of possible danger. Members of the media do not have the right to access crime scenes or any area where their presence may interfere with incident operations, mitigation or evidence collection.

- The media may only access private property with the property owner's permission. Fire personnel cannot provide members of the media with authorization to enter private property.
- If approached and questioned by the media and/or the public, talk about your assignment or task at hand. If need be, direct the questioning party to the incident PIO.
- Do not speculate or give opinions
- There is no such thing as an "off the record" comment.

CAL FIRE SOCIAL MEDIA POLICY (Social Media 0691)

Social Media is increasingly being used by public agencies and the media as well as the public. This form of communication continues to grow rapidly in order to supply the public's desire for instant information gratification. All personnel assigned to a CAL FIRE incident will adhere to the CAL FIRE Social Media Policy. Further information about the CAL FIRE Social Media Policy can be obtained from the Information Officer. If you are uncertain, please ask. **Do not post:**

- Inappropriate information, pictures or videos
- Opinions regarding the incident or policy
- Endorsements of any kind

PICTURES AND VIDEO OF INCIDENT

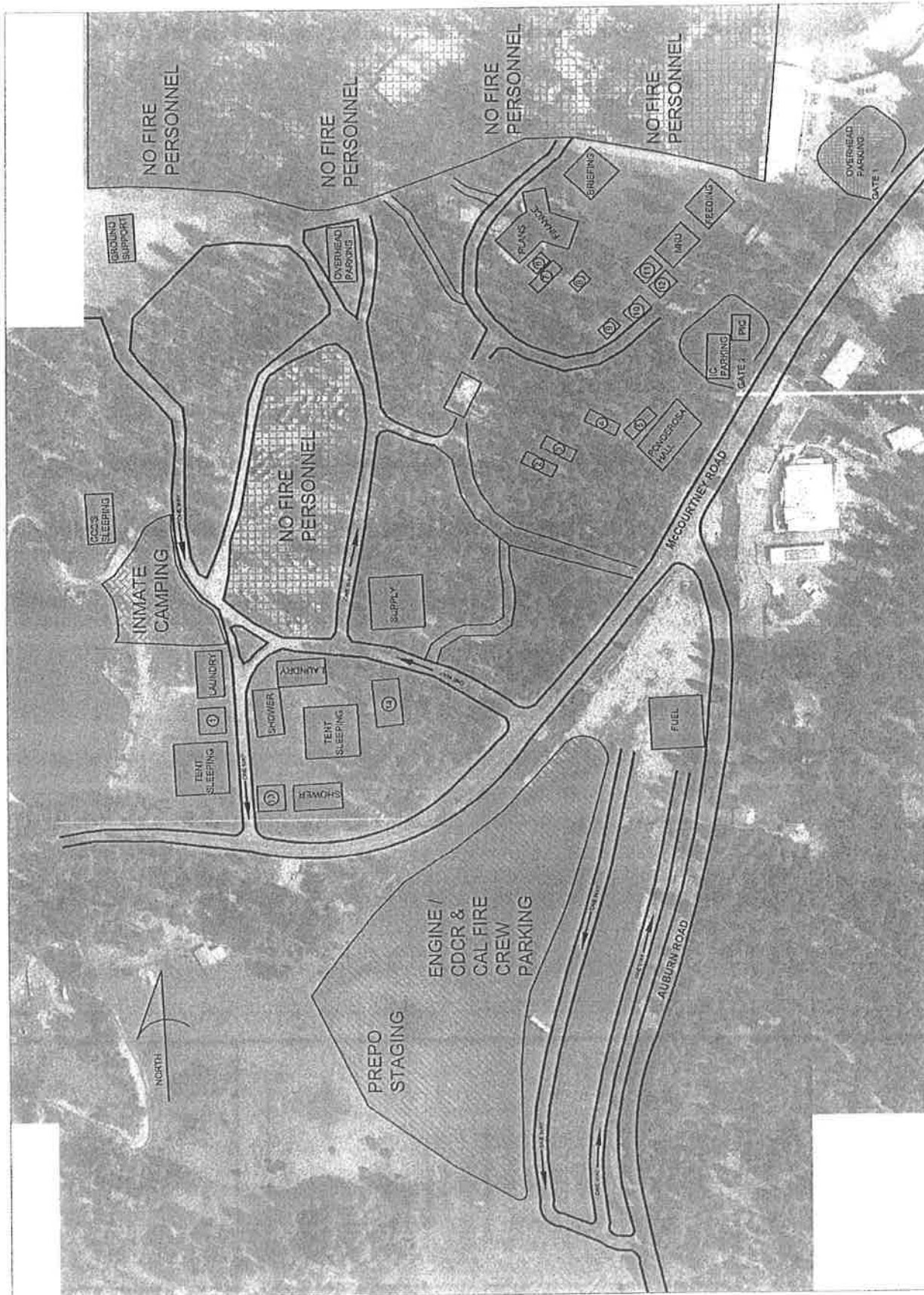
We are in a new era of media. Media no longer means the news/broadcast industry but now refers to anyone that has the capability to shoot video and or photographs and post them onto social media in a matter of minutes. Unfortunately we have seen some instances of video or photographs that have depicted unsafe, unprofessional or embarrassing circumstances which are a serious breach of ethics. When this happens it reflects poorly on all that are attached to this incident. Posting an inappropriate video, photo or blog comment could have unwanted effects. It may be unsafe to shoot photos or video and a firefighter who is concentrating on a camera can't be looking up, down and all around.

LOST AND FOUND

The Information staff will manage *Lost and Found* items for the incident. If you have lost an item, leave your contact information and what you have lost at the Information trailer. If you have found an item on the incident, bring the item to the Information trailer.

MAIL SERVICE

The Information staff will assist you in mailing and receiving letters and packages.

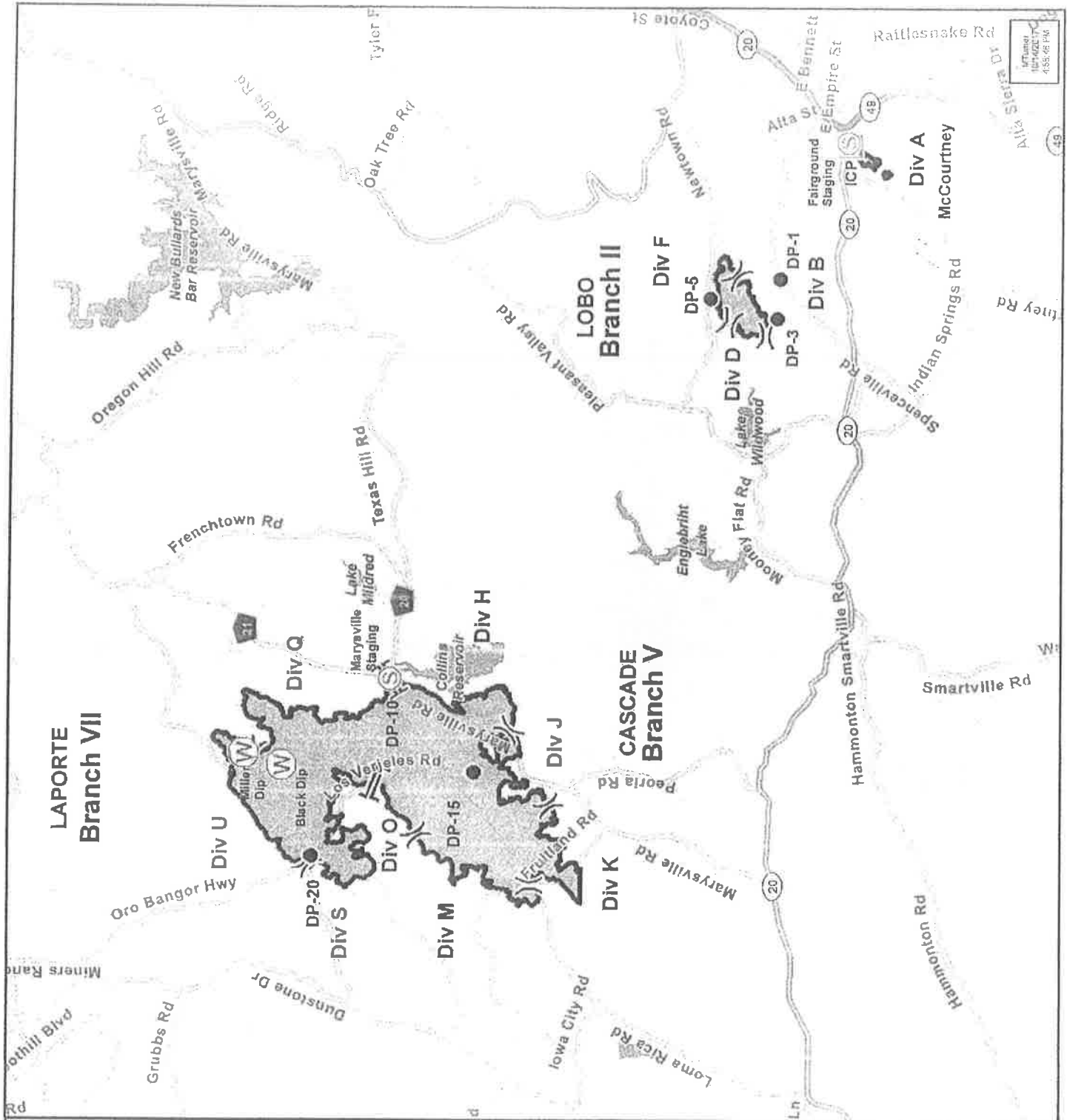


**BASE CAMP MAP
WIND COMPLEX
CA-NEU-026295**

- ① INMATE SHOWERS
- ② FACILITIES
- ③ LOGISTICS
- ④ MOTELS / ORDERING
- ⑤ IC TRAILER

- ⑥ GIS
- ⑦ CLERICAL
- ⑧ COMM
- ⑨ LIASON / SAFETY
- ⑩ OPS

- ⑪ MEDICAL
- ⑫ MEDL
- ⑬ DUMPSTER
- ⑭ ICE / WATER & LUNCHES



TRAVEL MAP
Wind Complex
 CA-NEU-026295
 10/15/2017

- Drop Point
- Incident Command Post
- Spot Fire
- Staging Area
- Water Source
- Division
- Branch
- Uncontrolled Fire Edge
- Completed Line
- Interstates
- Highways
- Major Roads
- Ramps
- Water Features

