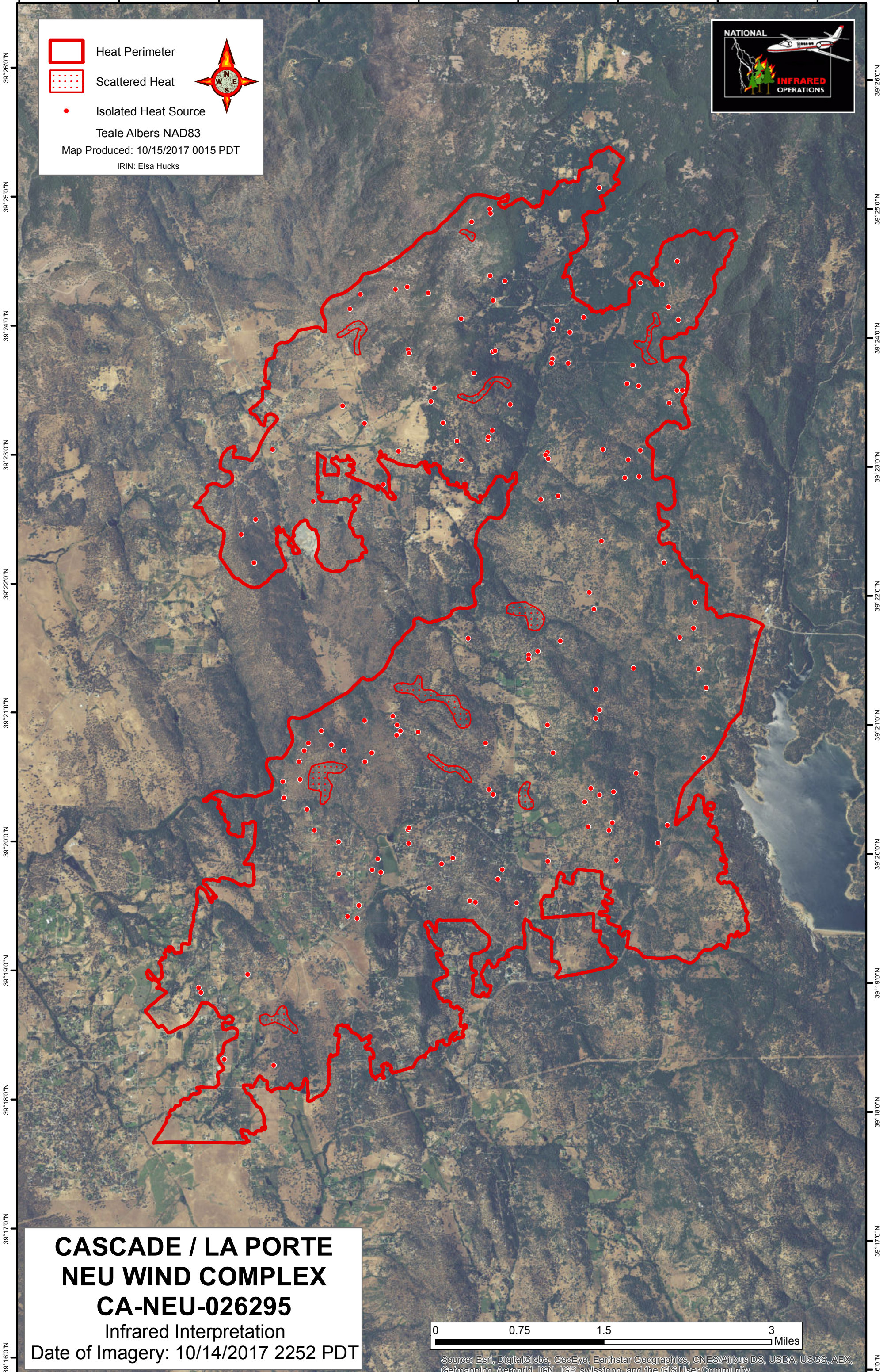




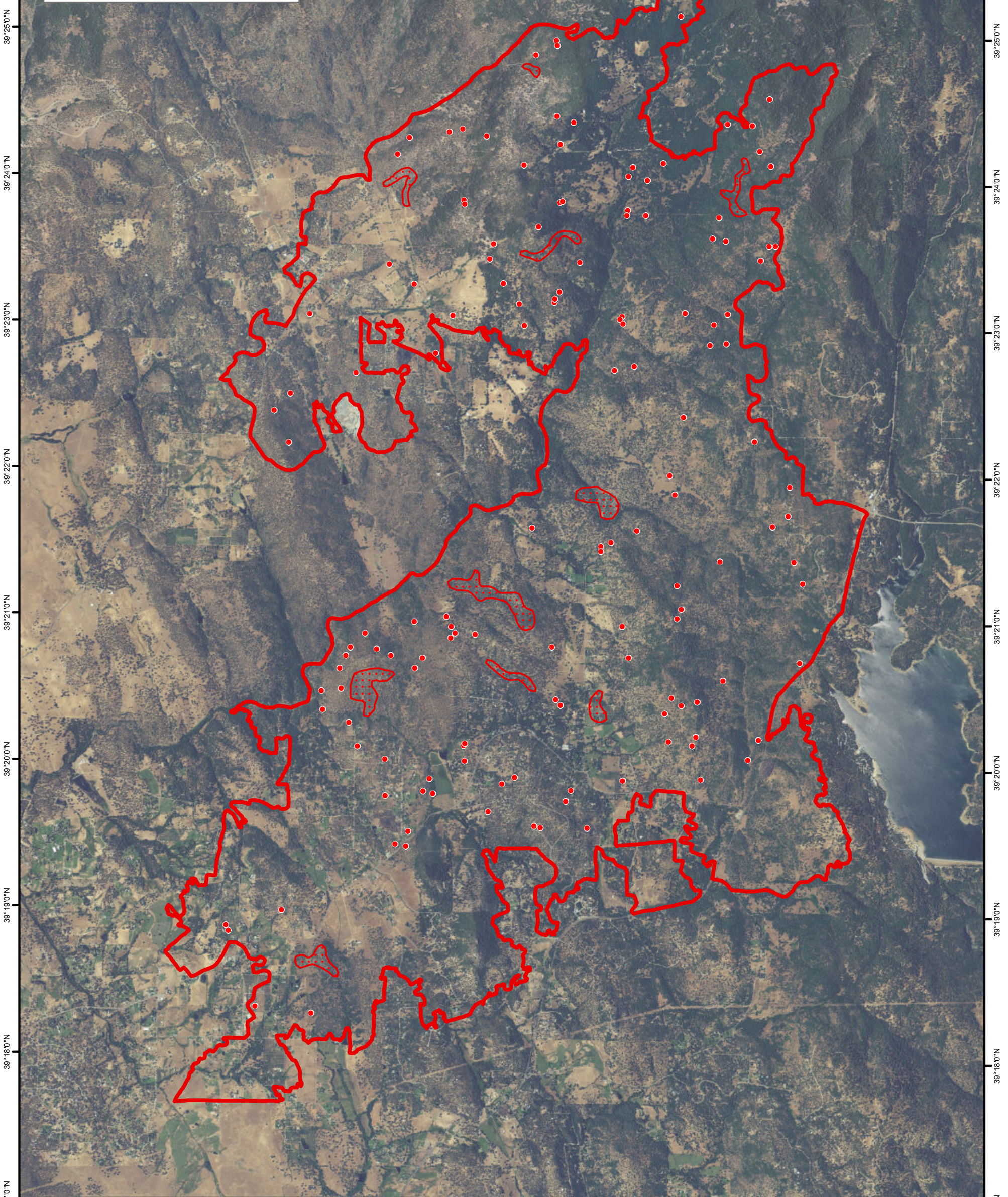


121°27'0"W 121°26'0"W 121°25'0"W 121°24'0"W 121°23'0"W 121°22'0"W 121°21'0"W 121°20'0"W 121°19'0"W



 Heat Perimeter
 Scattered Heat
 Isolated Heat Source


Teale Albers NAD83
 Map Produced: 10/15/2017 0015 PDT
 IRIN: Elsa Hucks



**CASCADE / LA PORTE
 NEU WIND COMPLEX
 CA-NEU-026295**
 Infrared Interpretation
 Date of Imagery: 10/14/2017 2252 PDT

0 0.75 1.5 3 Miles

Source: Esri, DigitalGlobe, GeoEye, Earthstar Geographics, CNES/Airbus DS, USDA, USGS, AEX, Getmapping, Aerogrid, IGN, IGP, swisstopo, and the GIS User Community

121°26'0"W 121°25'0"W 121°24'0"W 121°23'0"W 121°22'0"W 121°21'0"W 121°20'0"W 121°19'0"W