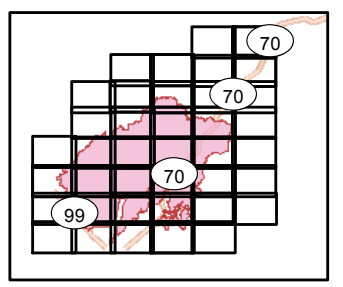


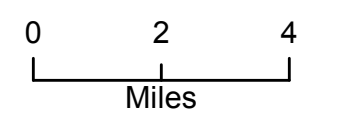
**Camp Incident**  
**CA-BTU-016737**  
**November 13, 2018**  
**IAP Map**

**BRANCH X/XI**  
**Index**

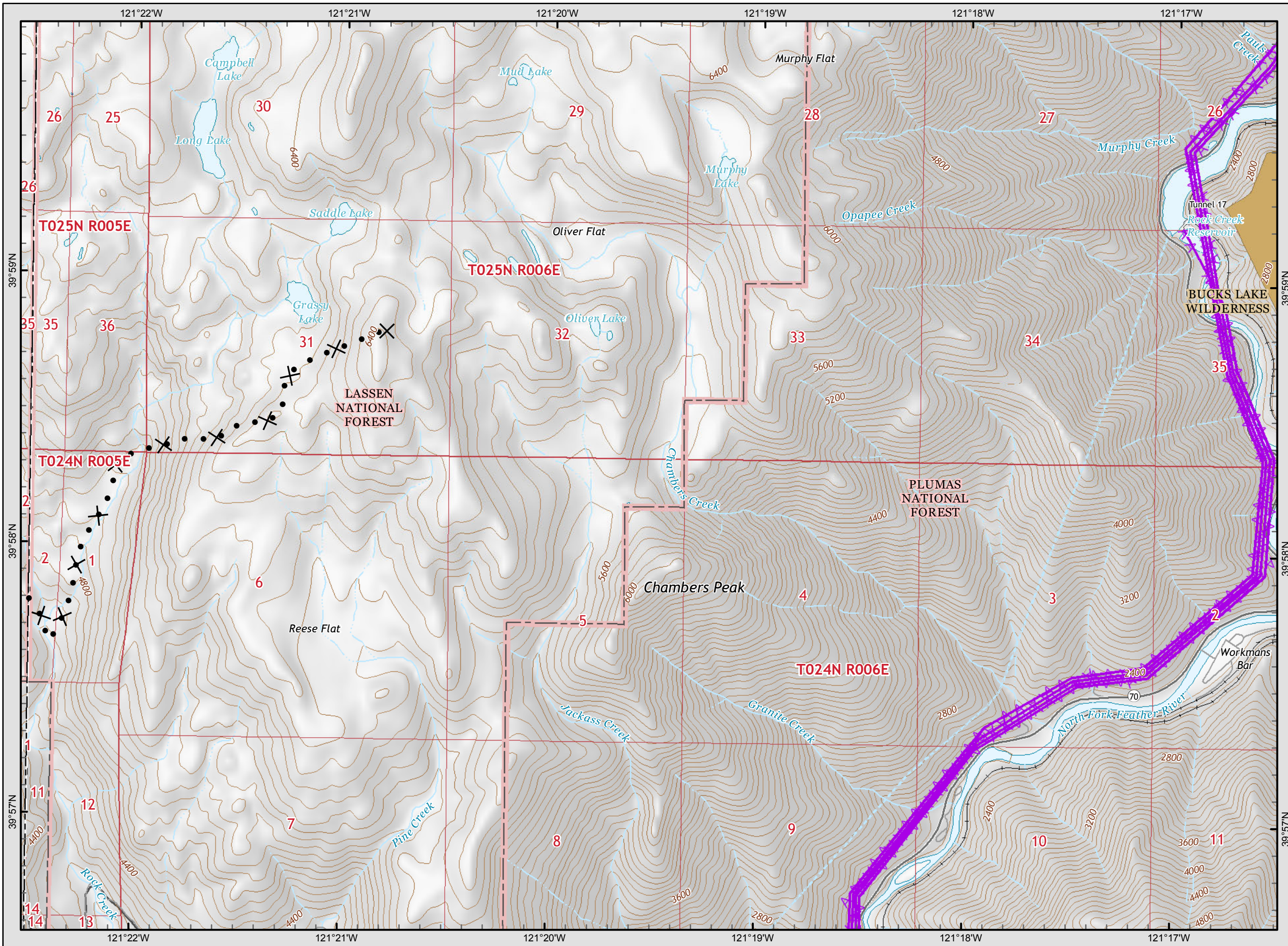


**Legend**

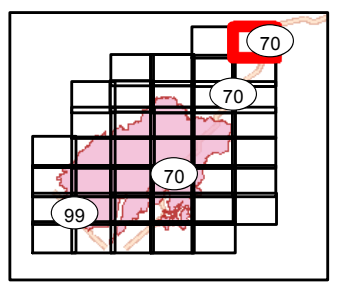
- Division
- Branch
- Completed Line
- Uncontrolled Fire Edge
- Completed Dozer Line
- Proposed Dozer Line
- Completed Hand Line
- Road as Completed Line
- Transmission Lines
- Drop Point
- Spot Fire
- Helispot
- Staging Area
- Retardant/Mud Pit
- Highway 162
- Comms Towers





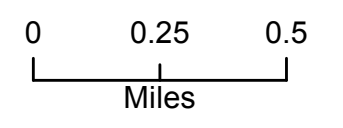


**Camp Incident**  
**CA-BTU-016737**  
**November 13, 2018**  
**IAP Map**  
**BRANCH X/XI**  
**Page 1**



**Legend**

- ( ) Division
- [ ] Branch
- Completed Line
- Uncontrolled Fire Edge
- XXXXX Completed Dozer Line
- X • Proposed Dozer Line
- H - Completed Hand Line
- R - Road as Completed Line
- AA Transmission Lines
- Drop Point
- ♂ Spot Fire
- Helispot
- ⊙ Staging Area
- Ⓜ Retardant/Mud Pit
- Highway 162
- Ⓜ Comms Towers



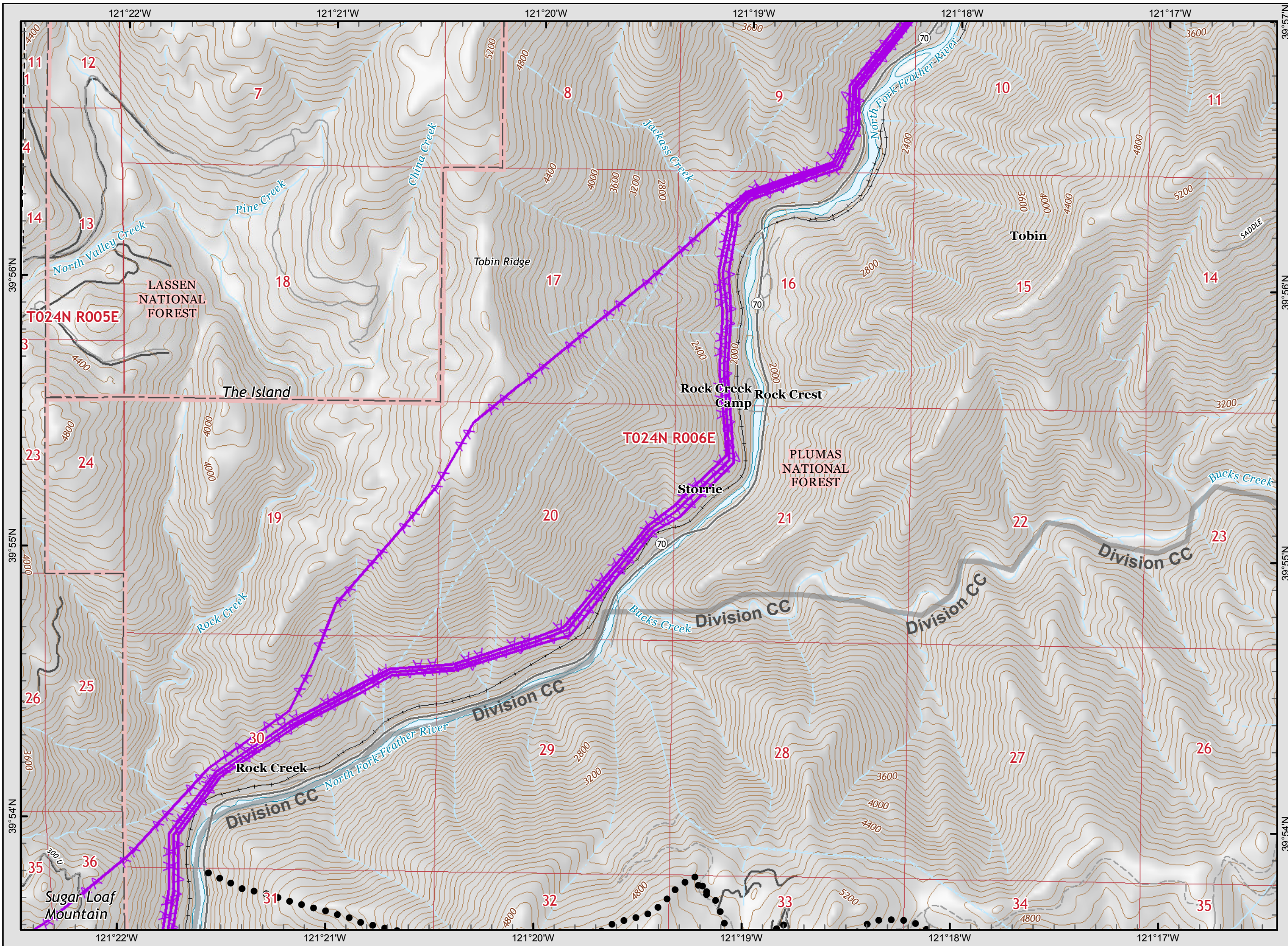
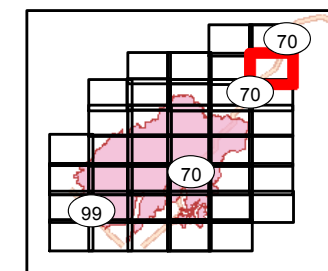




**Camp Incident**  
**CA-BTU-016737**  
**November 13, 2018**  
**IAP Map**

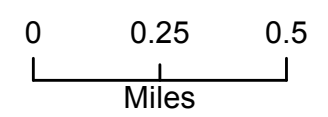
**BRANCH X/XI**

Page 2



**Legend**

- Division
- Branch
- Completed Line
- Uncontrolled Fire Edge
- Completed Dozer Line
- Proposed Dozer Line
- Completed Hand Line
- Road as Completed Line
- Transmission Lines
- Drop Point
- Spot Fire
- Helispot
- Staging Area
- Retardant/Mud Pit
- Highway 162
- Comms Towers



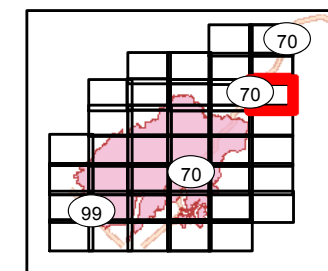




**Camp Incident**  
CA-BTU-016737  
November 13, 2018  
IAP Map

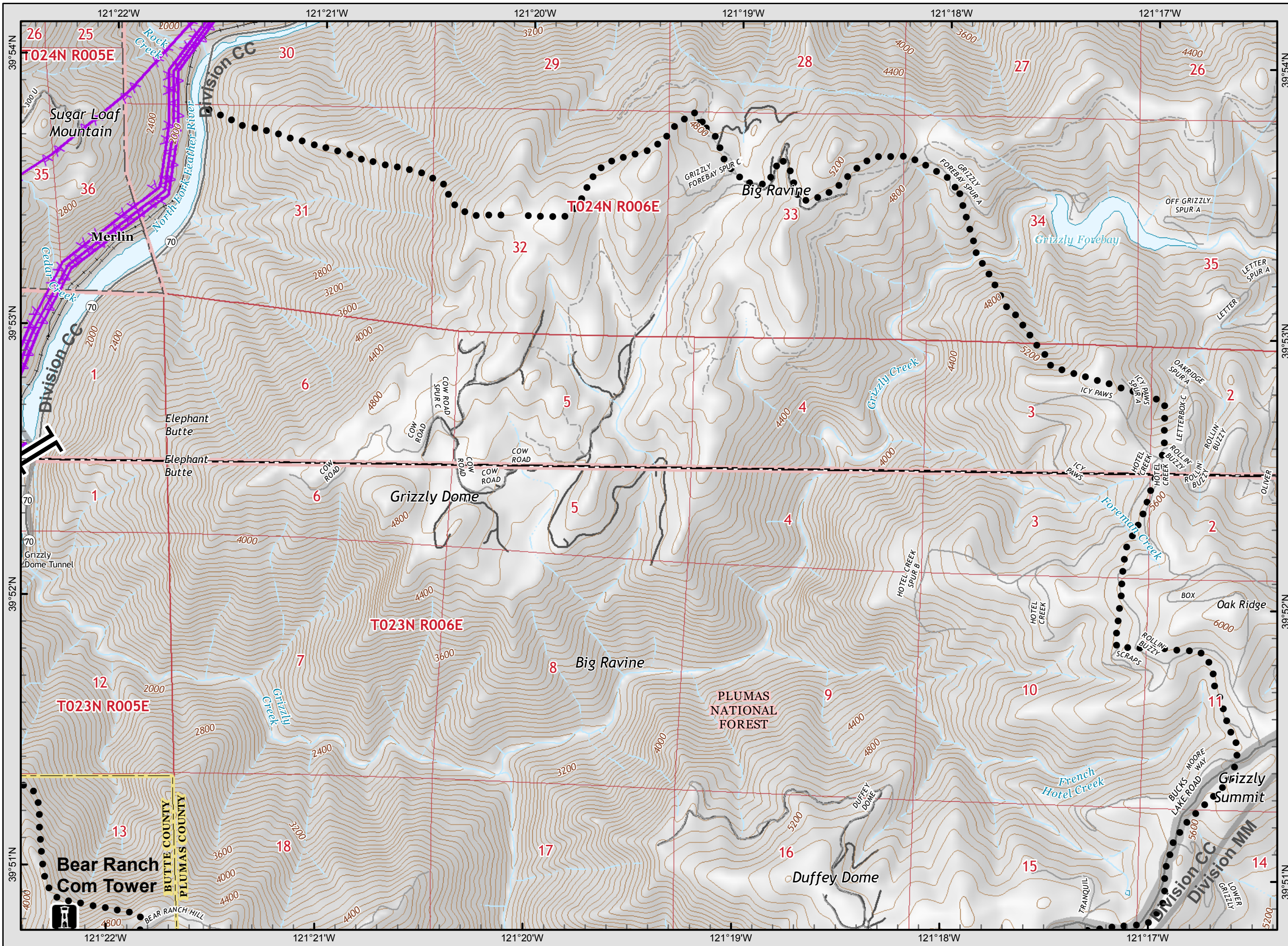
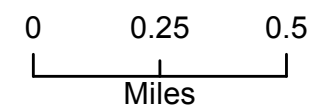
**BRANCH X/XI**

Page 3



**Legend**

- Division
- Branch
- Completed Line
- Uncontrolled Fire Edge
- Completed Dozer Line
- Proposed Dozer Line
- Completed Hand Line
- Road as Completed Line
- Transmission Lines
- Drop Point
- Spot Fire
- Helispot
- Staging Area
- Retardant/Mud Pit
- Highway 162
- Comms Towers



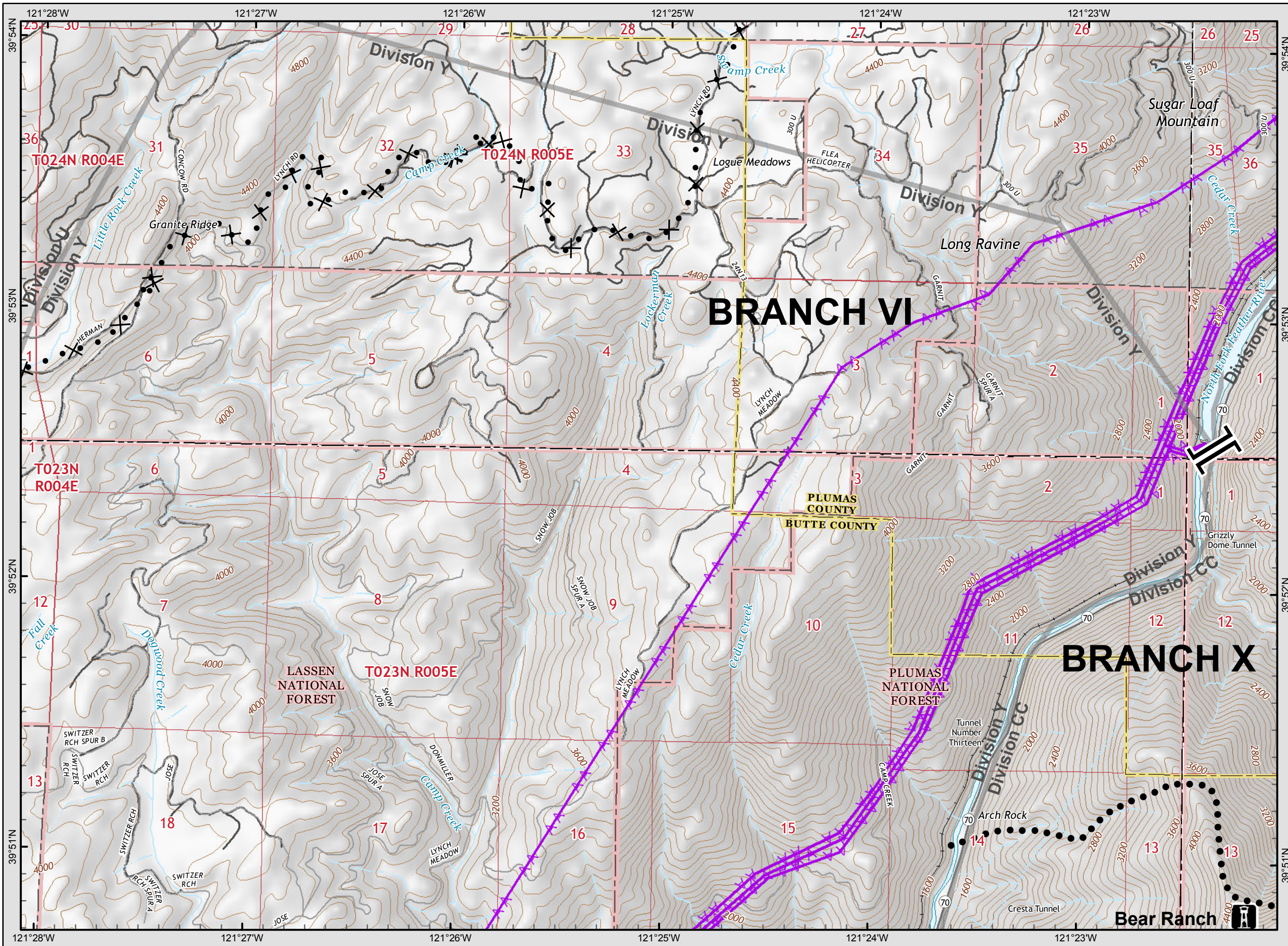
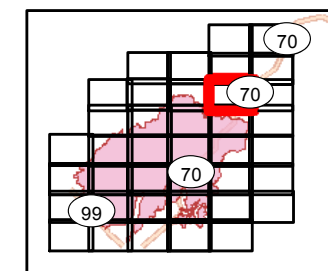




**Camp Incident**  
CA-BTU-016737  
November 13, 2018  
IAP Map

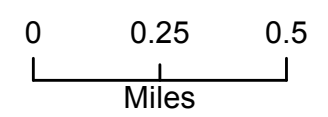
**BRANCH X/XI**

Page 4

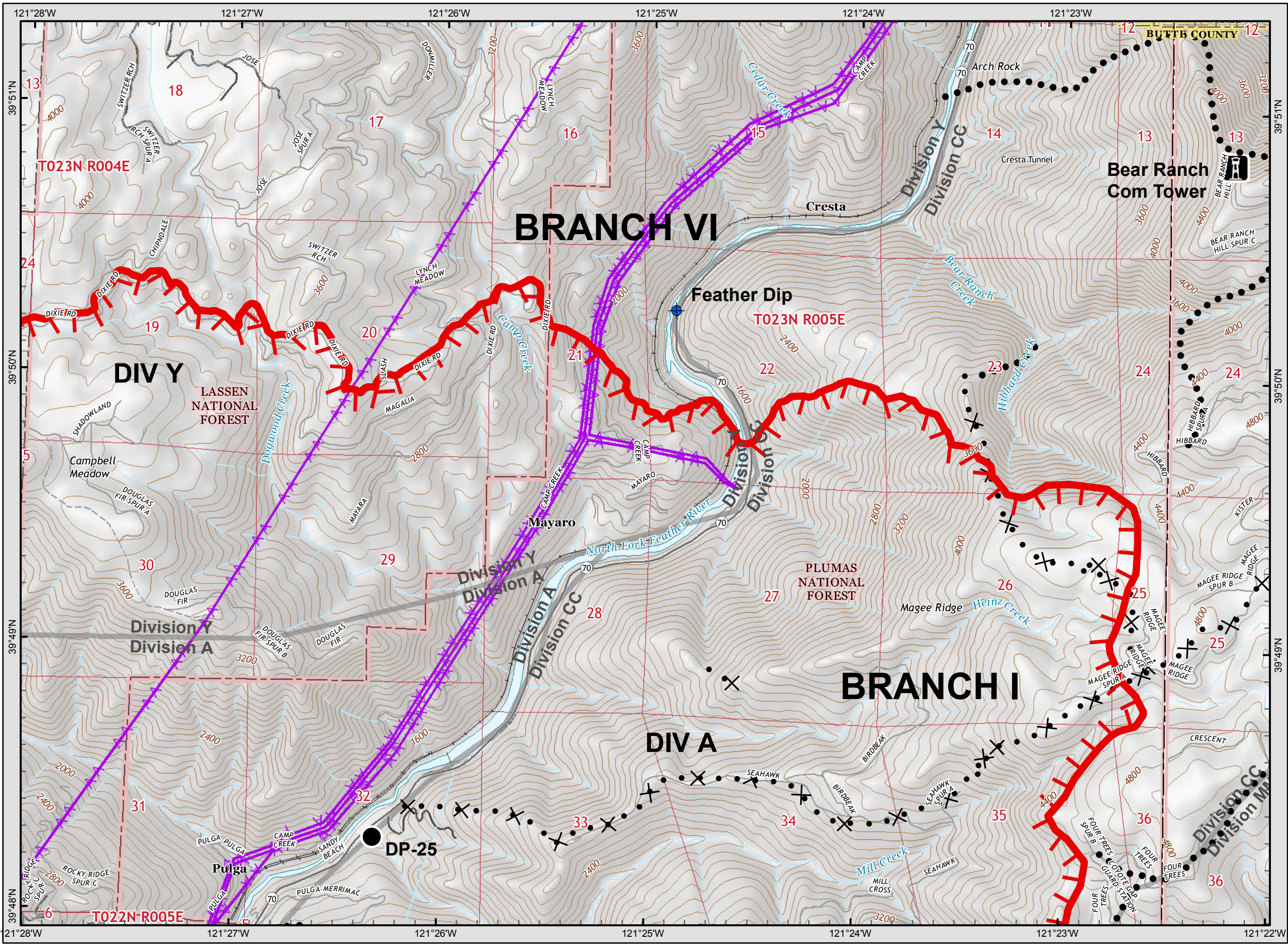


**Legend**

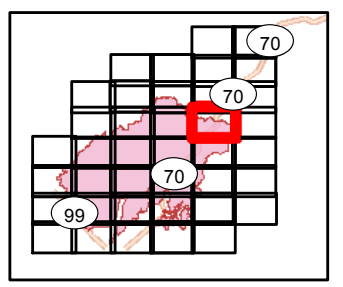
- ( ) Division
- [ ] Branch
- Completed Line
- Uncontrolled Fire Edge
- Completed Dozer Line
- X • Proposed Dozer Line
- H • Completed Hand Line
- R • Road as Completed Line
- AA Transmission Lines
- Drop Point
- Spot Fire
- Helispot
- Staging Area
- Retardant/Mud Pit
- Highway 162
- Comms Towers





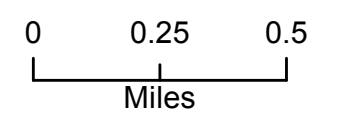


**Camp Incident**  
**CA-BTU-016737**  
**November 13, 2018**  
**IAP Map**  
**BRANCH X/XI**  
**Page 5**

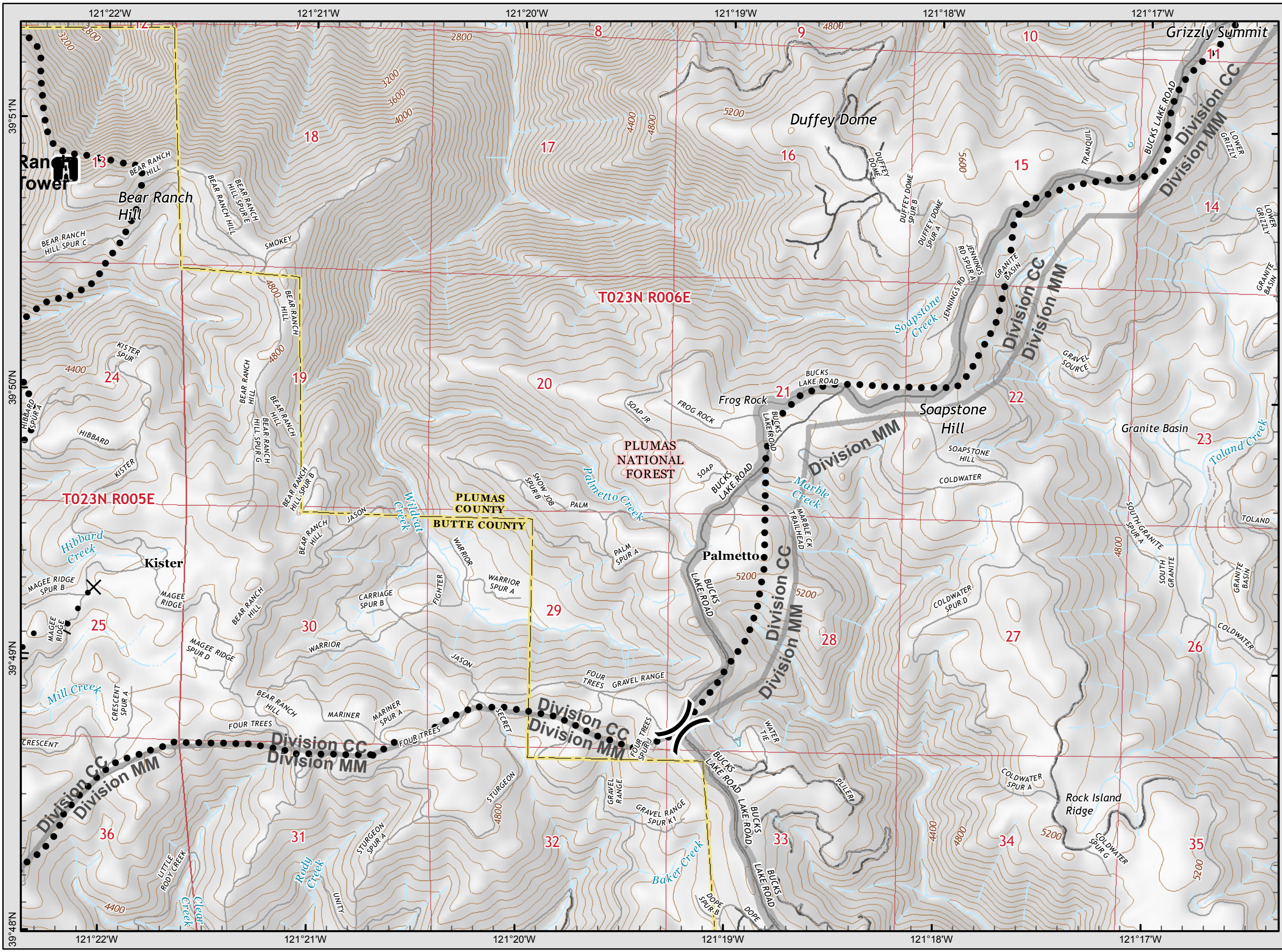


**Legend**

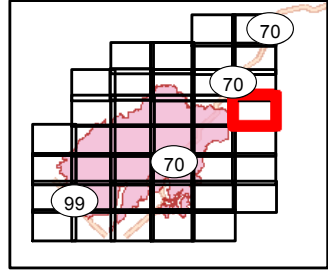
- ( ) Division
- [ ] Branch
- Completed Line
- Uncontrolled Fire Edge
- XXXXX Completed Dozer Line
- X • Proposed Dozer Line
- H - Completed Hand Line
- R - Road as Completed Line
- Transmission Lines
- Drop Point
- ♂ Spot Fire
- Helispot
- ⊙ Staging Area
- Retardant/Mud Pit
- Highway 162
- Comms Towers







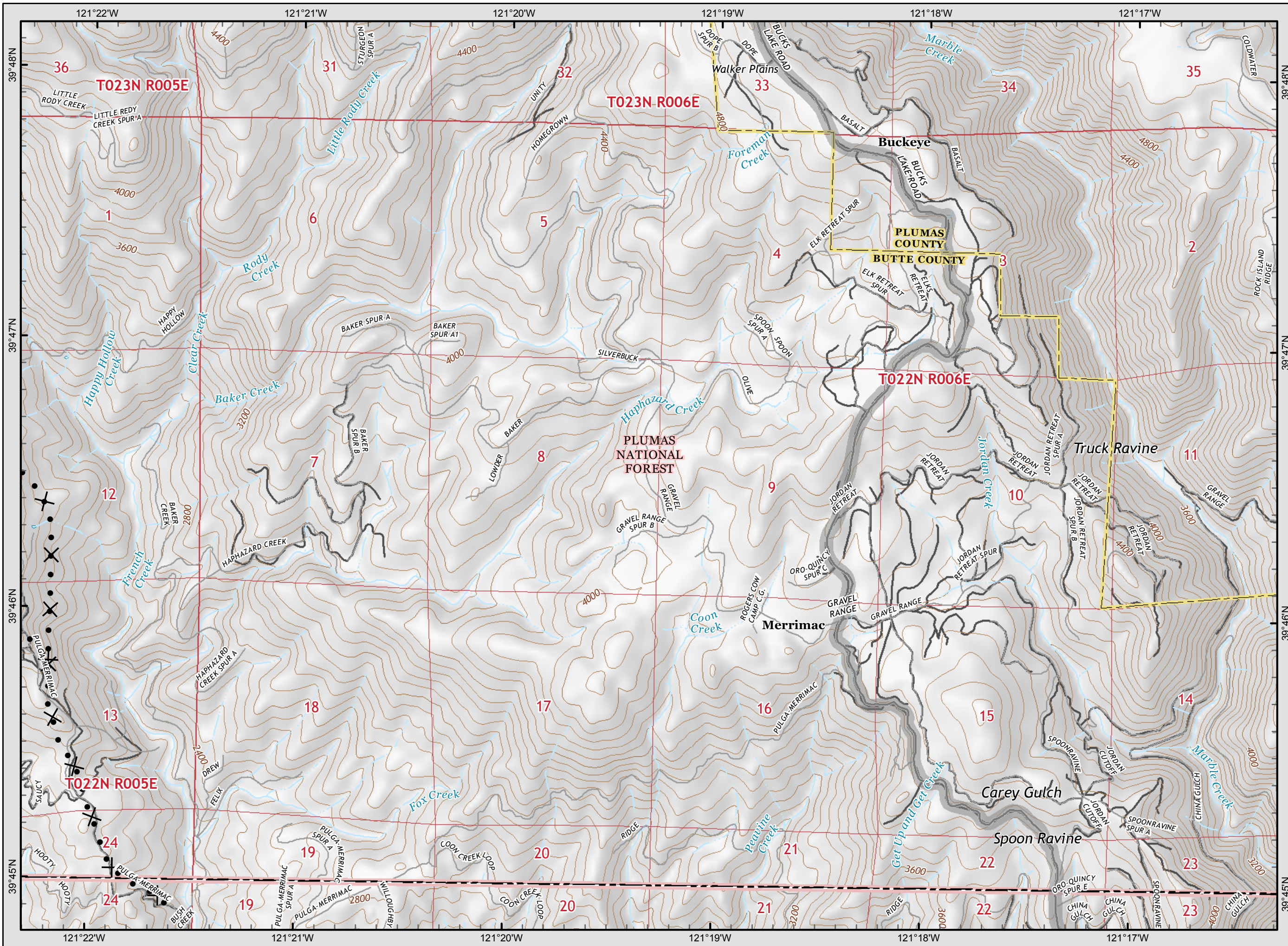
**Camp Incident**  
**CA-BTU-016737**  
**November 13, 2018**  
**IAP Map**  
**BRANCH X/XI**  
 Page 6



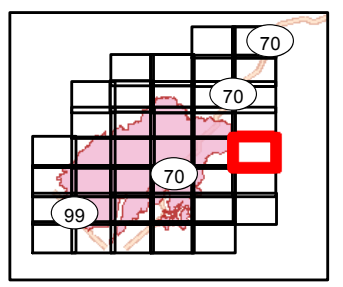
- Legend**
- ( ) Division
  - [ ] Branch
  - Completed Line
  - T Uncontrolled Fire Edge
  - XXXXX Completed Dozer Line
  - X • Proposed Dozer Line
  - H - Completed Hand Line
  - R - Road as Completed Line
  - AA Transmission Lines
  - Drop Point
  - ♂ Spot Fire
  - Helispot
  - ⊙ Staging Area
  - 🚒 Retardant/Mud Pit
  - 162 Highway 162
  - 📡 Comms Towers

0 0.25 0.5  
Miles





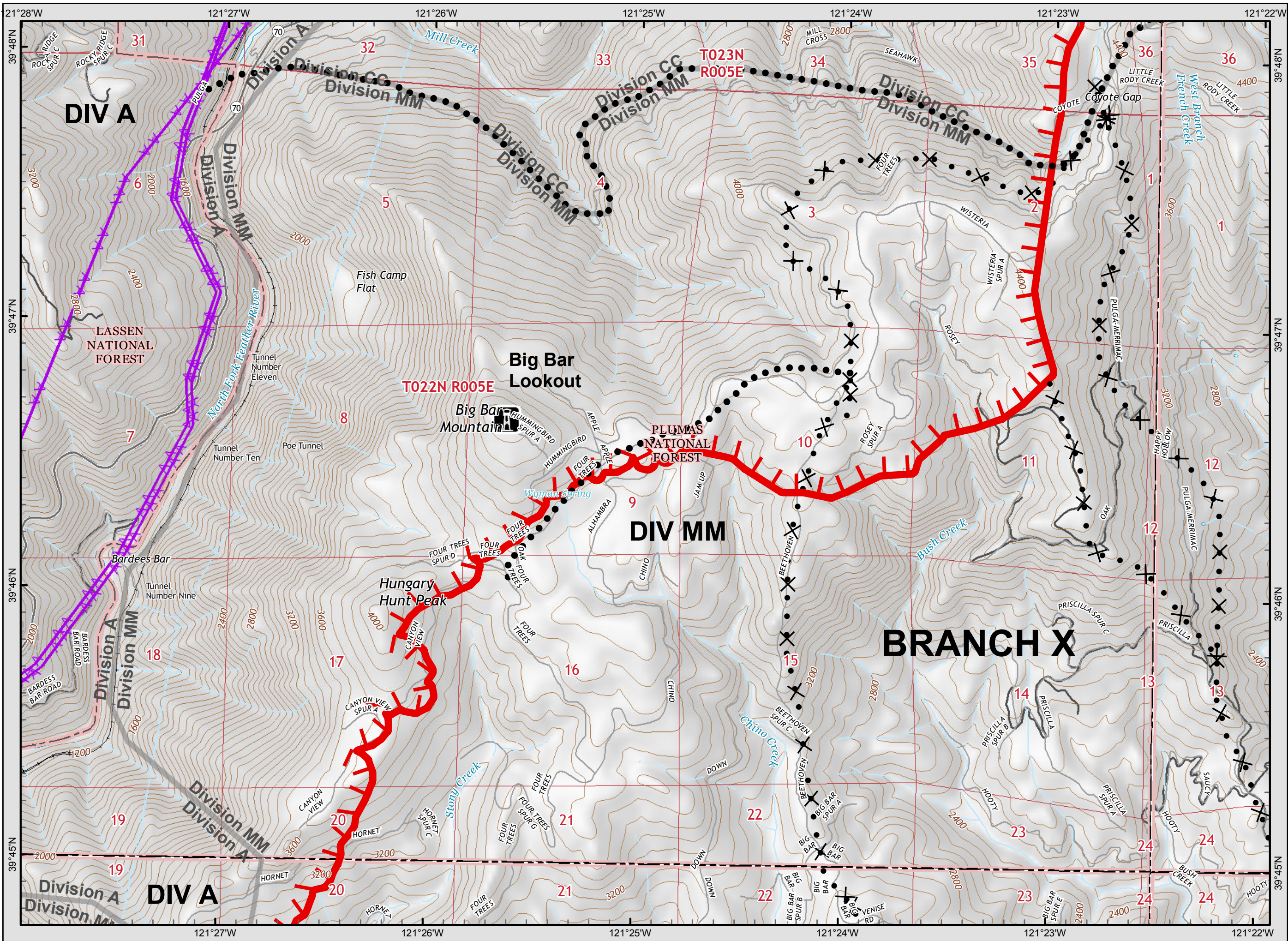
**Camp Incident**  
**CA-BTU-016737**  
**November 13, 2018**  
**IAP Map**  
**BRANCH X/XI**  
**Page 7**



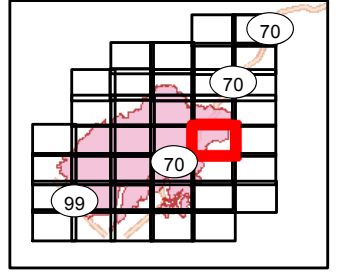
- Legend**
- ( ) Division
  - [ ] Branch
  - Completed Line
  - Uncontrolled Fire Edge
  - XXXXX Completed Dozer Line
  - X • Proposed Dozer Line
  - H - Completed Hand Line
  - R - Road as Completed Line
  - Transmission Lines
  - Drop Point
  - ♂ Spot Fire
  - Helispot
  - Staging Area
  - Retardant/Mud Pit
  - Highway 162
  - Comms Towers

0 0.25 0.5  
Miles



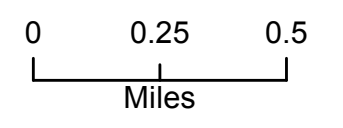


**Camp Incident**  
**CA-BTU-016737**  
**November 13, 2018**  
**IAP Map**  
**BRANCH X/XI**  
 Page 8



**Legend**

- ( ) Division
- [ ] Branch
- Completed Line
- Uncontrolled Fire Edge
- XXXXX Completed Dozer Line
- X • Proposed Dozer Line
- H • Completed Hand Line
- R • Road as Completed Line
- Transmission Lines
- Drop Point
- ♂ Spot Fire
- ⊙ Helispot
- ⊙ Staging Area
- ⊙ Retardant/Mud Pit
- Highway 162
- ⊙ Comms Towers



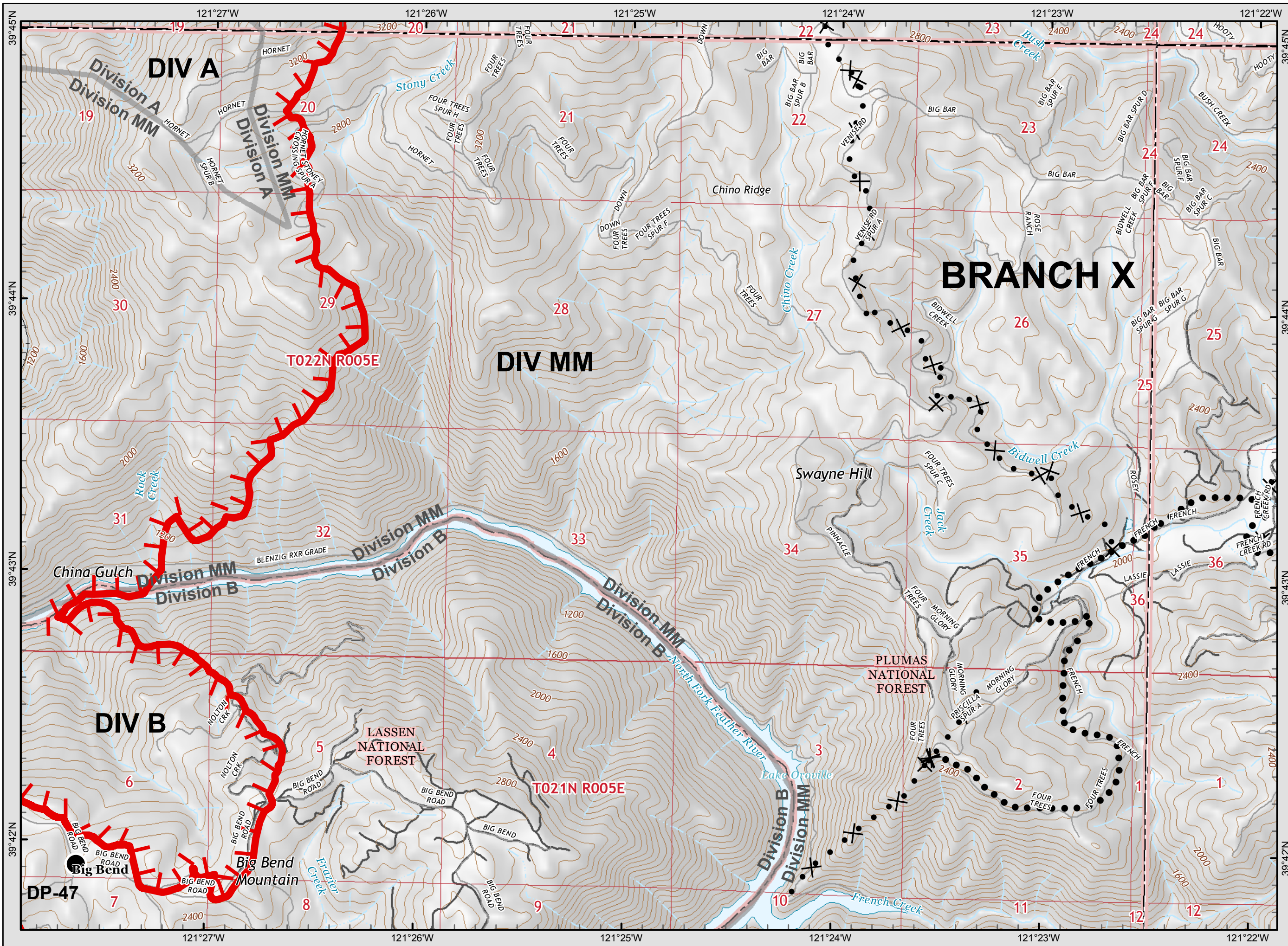
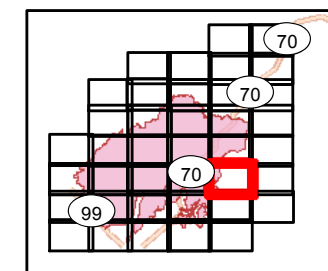




**Camp Incident**  
CA-BTU-016737  
November 13, 2018  
IAP Map

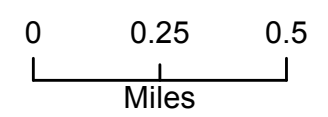
**BRANCH X/XI**

Page 9



**Legend**

- ( ) Division
- [ ] Branch
- Completed Line
- ┌ Uncontrolled Fire Edge
- XXXXX Completed Dozer Line
- ⊗ Proposed Dozer Line
- H - Completed Hand Line
- R - Road as Completed Line
- AA Transmission Lines
- Drop Point
- ♂ Spot Fire
- ⊙ Helispot
- ⊙ Staging Area
- ⊙ Retardant/Mud Pit
- 162 Highway 162
- 📡 Comms Towers





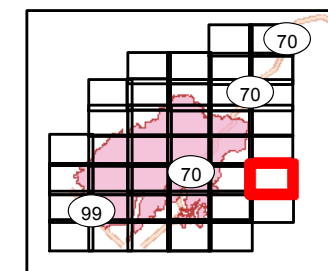


# Camp Incident

CA-BTU-016737  
November 13, 2018  
IAP Map

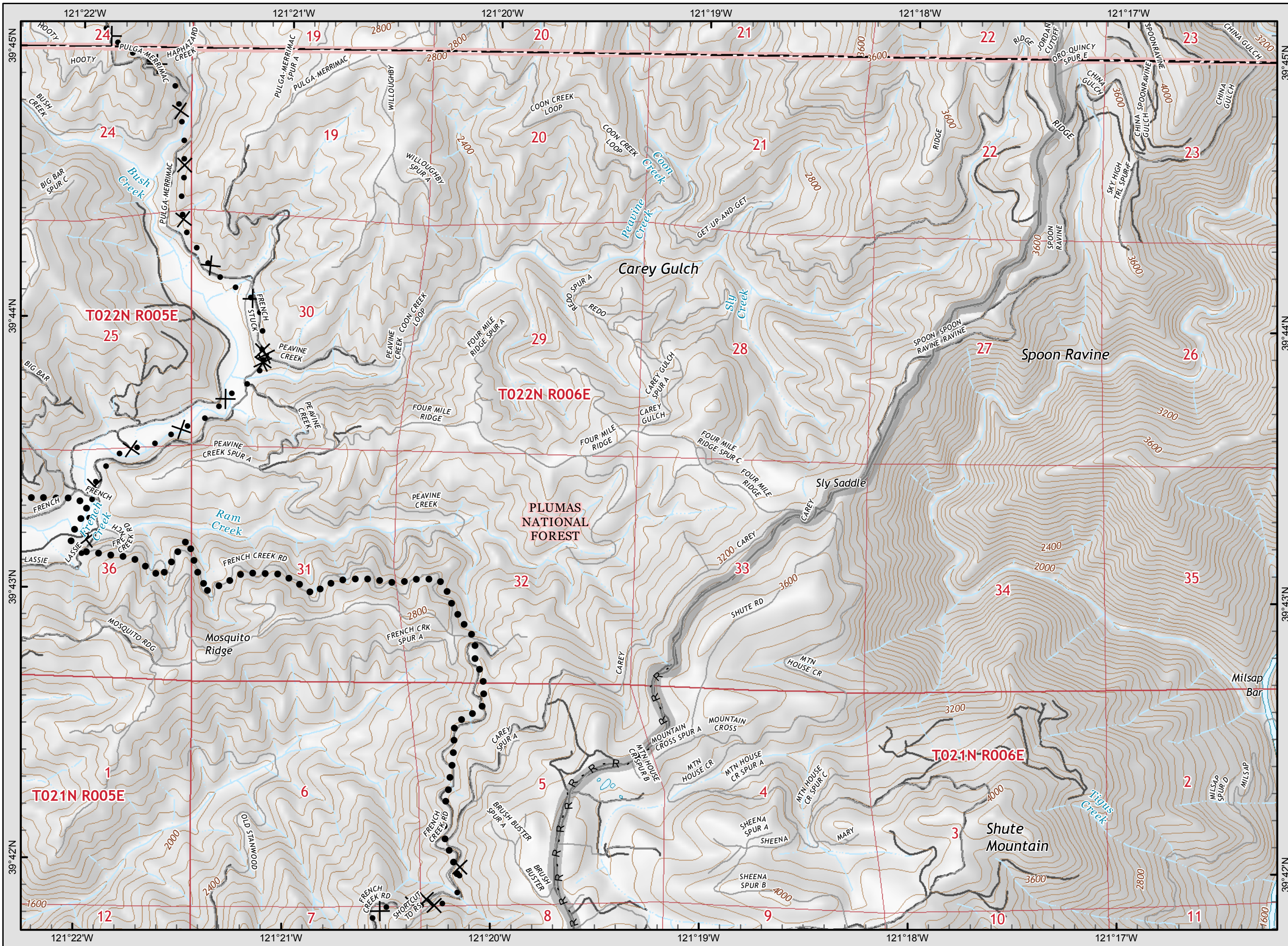
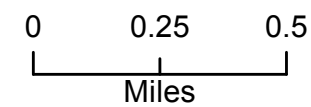
## BRANCH X/XI

Page 10

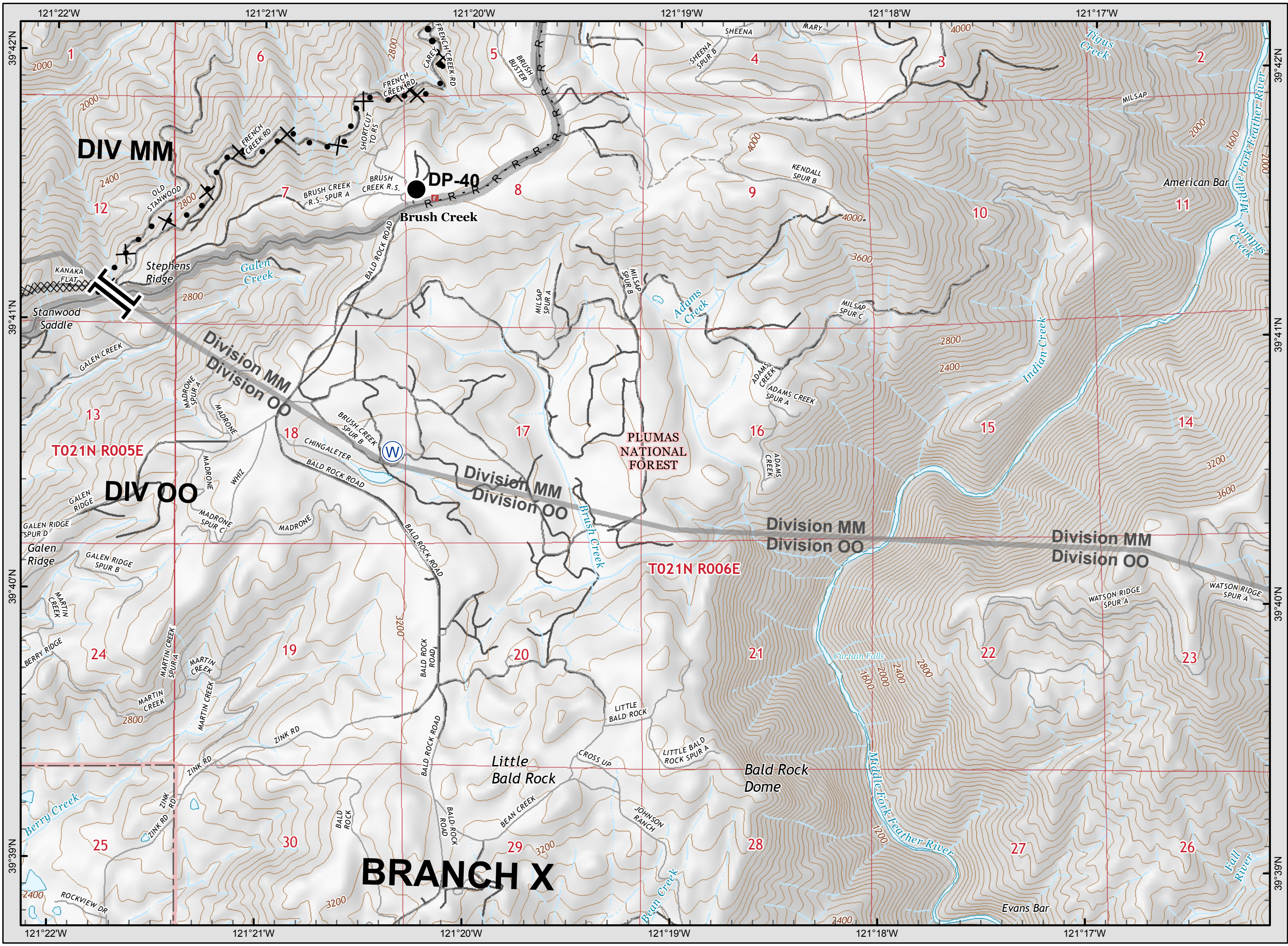


### Legend

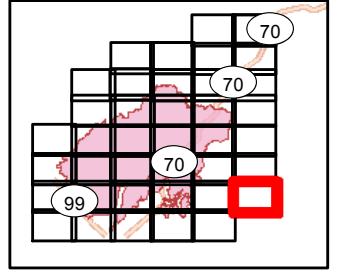
- ( ) Division
- [ ] Branch
- Completed Line
- Uncontrolled Fire Edge
- XXXXX Completed Dozer Line
- X • Proposed Dozer Line
- H - Completed Hand Line
- R - Road as Completed Line
- AA Transmission Lines
- Drop Point
- ♂ Spot Fire
- Helispot
- ⊙ Staging Area
- 🪣 Retardant/Mud Pit
- 162 Highway 162
- 📡 Comms Towers





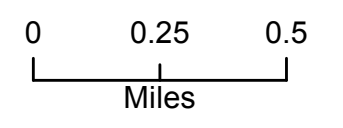


**Camp Incident**  
**CA-BTU-016737**  
**November 13, 2018**  
**IAP Map**  
**BRANCH X/XI**  
**Page 11**

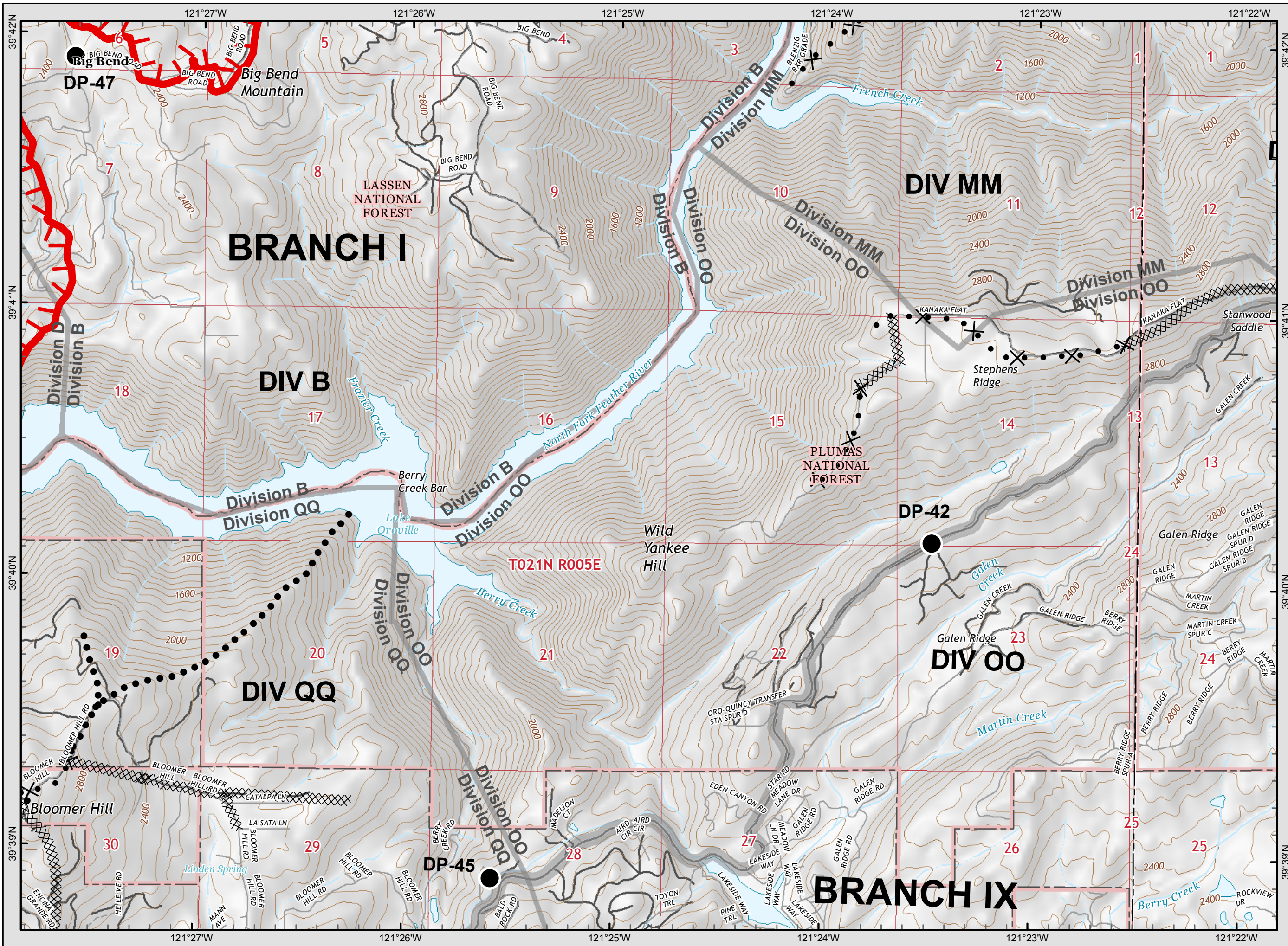


**Legend**

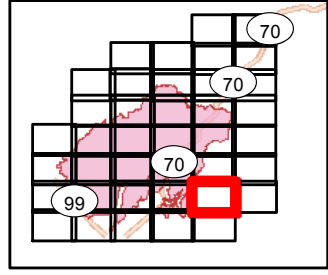
- ( ) Division
- [ ] Branch
- Completed Line
- Uncontrolled Fire Edge
- XXXXX Completed Dozer Line
- X • Proposed Dozer Line
- H - Completed Hand Line
- R - Road as Completed Line
- AA Transmission Lines
- Drop Point
- ♂ Spot Fire
- Helispot
- ⊙ Staging Area
- Retardant/Mud Pit
- Highway 162
- Comms Towers





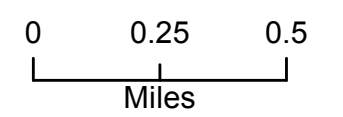


**Camp Incident**  
**CA-BTU-016737**  
**November 13, 2018**  
**IAP Map**  
**BRANCH X/XI**  
 Page 12



**Legend**

- ( ) Division
- [ ] Branch
- Completed Line
- Uncontrolled Fire Edge
- XXXXX Completed Dozer Line
- X • Proposed Dozer Line
- H - Completed Hand Line
- R - Road as Completed Line
- AA Transmission Lines
- Drop Point
- ♂ Spot Fire
- Helispot
- ⊙ Staging Area
- Ⓜ Retardant/Mud Pit
- 162 Highway 162
- 📡 Comms Towers

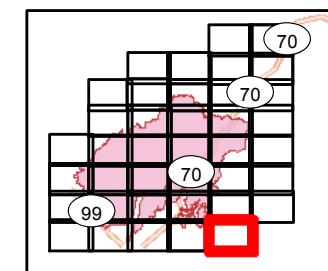






**Camp Incident**  
**CA-BTU-016737**  
**November 13, 2018**  
**IAP Map**

**BRANCH X/XI**  
 Page 13



**Legend**

- Division
- Branch
- Completed Line
- Uncontrolled Fire Edge
- Completed Dozer Line
- Proposed Dozer Line
- Completed Hand Line
- Road as Completed Line
- Transmission Lines
- Drop Point
- Spot Fire
- Helispot
- Staging Area
- Retardant/Mud Pit
- Highway 162
- Comms Towers

