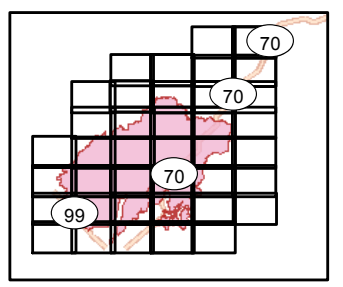


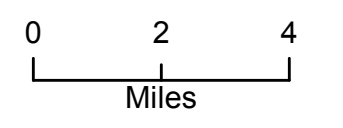
Camp Incident
CA-BTU-016737
November 13, 2018
IAP Map

BRANCH II
Index



Legend

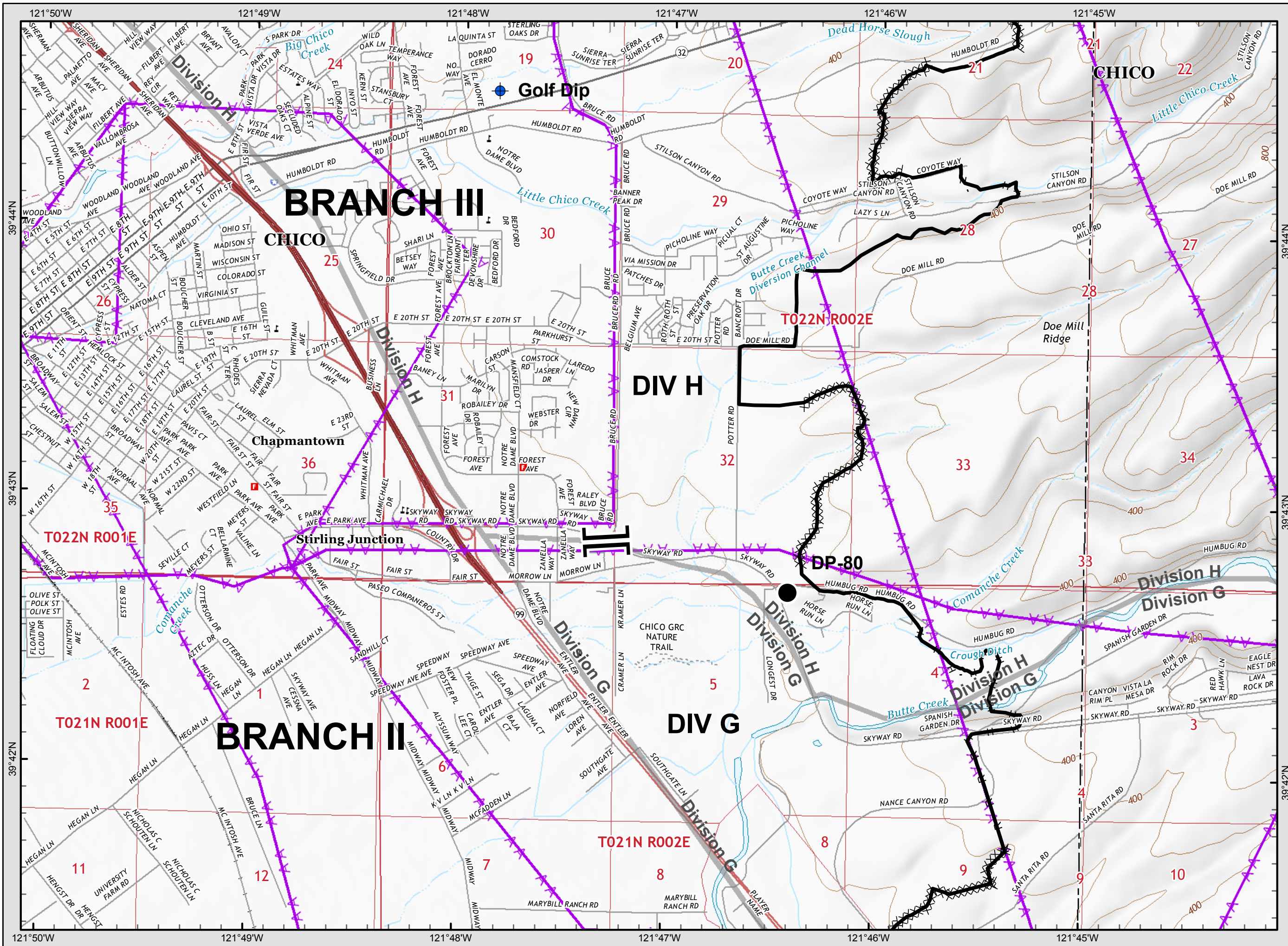
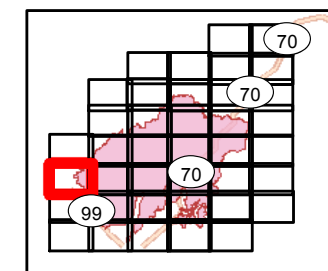
- Division
- Branch
- Completed Line
- Uncontrolled Fire Edge
- Completed Dozer Line
- Proposed Dozer Line
- Completed Hand Line
- Road as Completed Line
- Transmission Lines
- Drop Point
- Spot Fire
- Helispot
- Staging Area
- Retardant/Mud Pit
- Highway 162
- Comms Towers





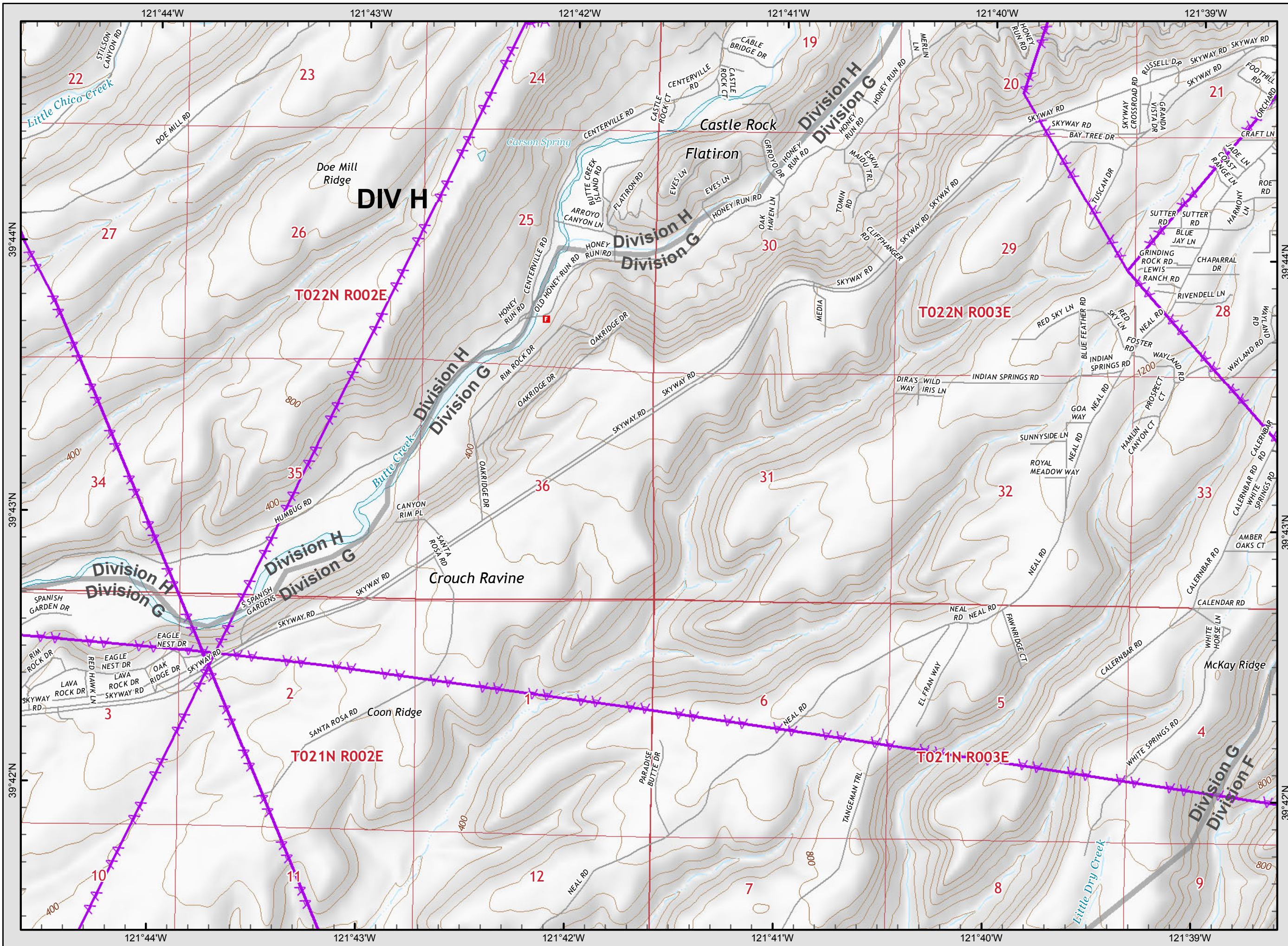
Camp Incident
CA-BTU-016737
November 13, 2018
IAP Map

BRANCH II
Page 1



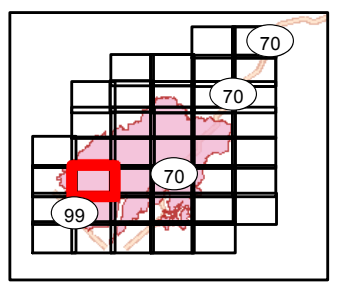
- Legend**
- Division
 - Branch
 - Completed Line
 - Uncontrolled Fire Edge
 - Completed Dozer Line
 - Proposed Dozer Line
 - Completed Hand Line
 - Road as Completed Line
 - Transmission Lines
 - Drop Point
 - Spot Fire
 - Helispot
 - Staging Area
 - Retardant/Mud Pit
 - Highway 162
 - Comms Towers

0 0.25 0.5
Miles



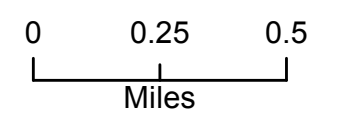
Camp Incident
CA-BTU-016737
November 13, 2018
IAP Map

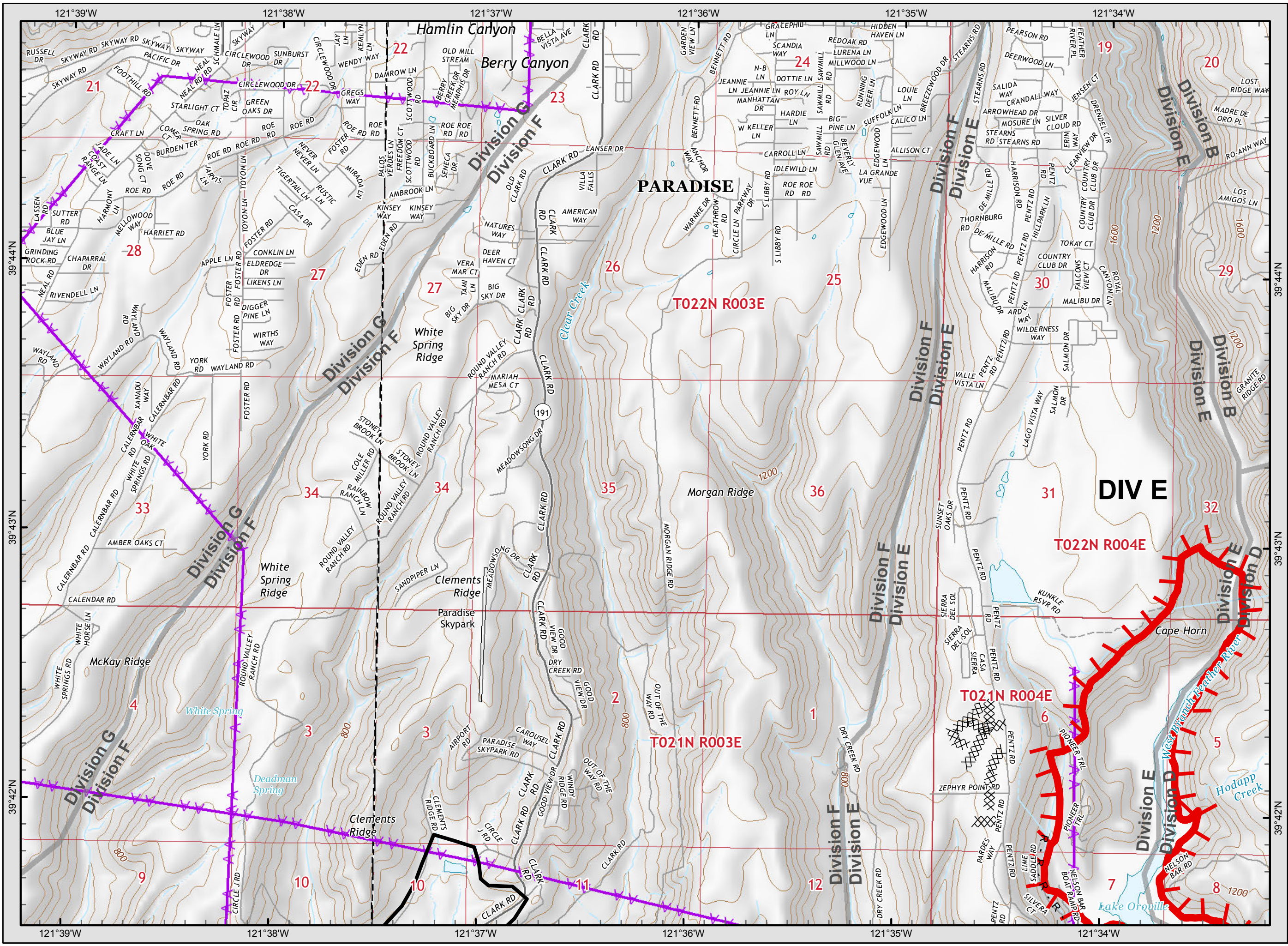
BRANCH II
Page 2



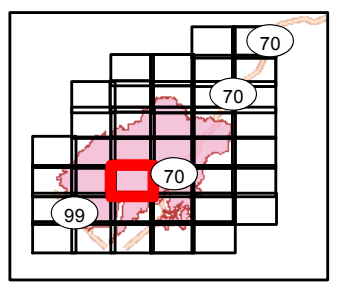
Legend

- () Division
- [] Branch
- Completed Line
- T Uncontrolled Fire Edge
- XXXXX Completed Dozer Line
- - - Proposed Dozer Line
- H - Completed Hand Line
- R - Road as Completed Line
- AA Transmission Lines
- Drop Point
- ♂ Spot Fire
- Helispot
- ⊙ Staging Area
- 🪣 Retardant/Mud Pit
- 162 Highway 162
- 📡 Comms Towers



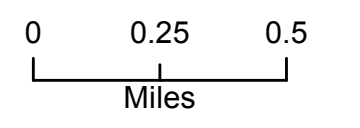


Camp Incident
CA-BTU-016737
November 13, 2018
IAP Map
BRANCH II
Page 3



Legend

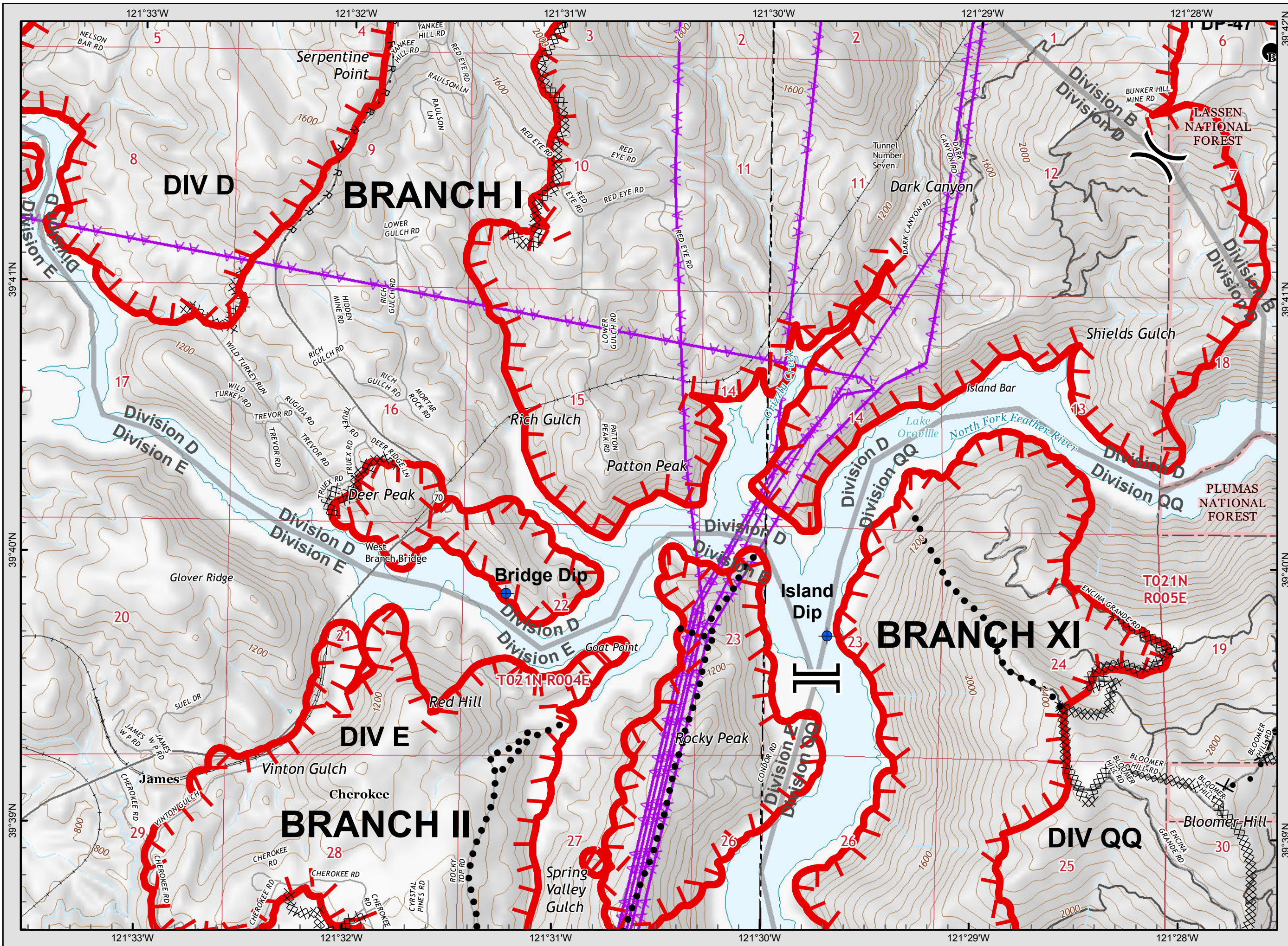
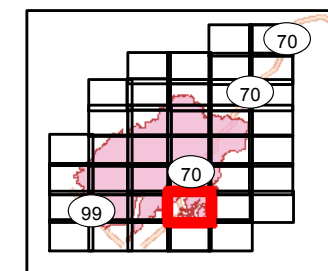
- Division
- Branch
- Completed Line
- Uncontrolled Fire Edge
- Completed Dozer Line
- Proposed Dozer Line
- Completed Hand Line
- Road as Completed Line
- Transmission Lines
- Drop Point
- Spot Fire
- Helispot
- Staging Area
- Retardant/Mud Pit
- Highway 162
- Comms Towers





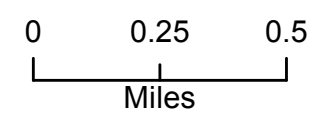
Camp Incident
CA-BTU-016737
November 13, 2018
IAP Map

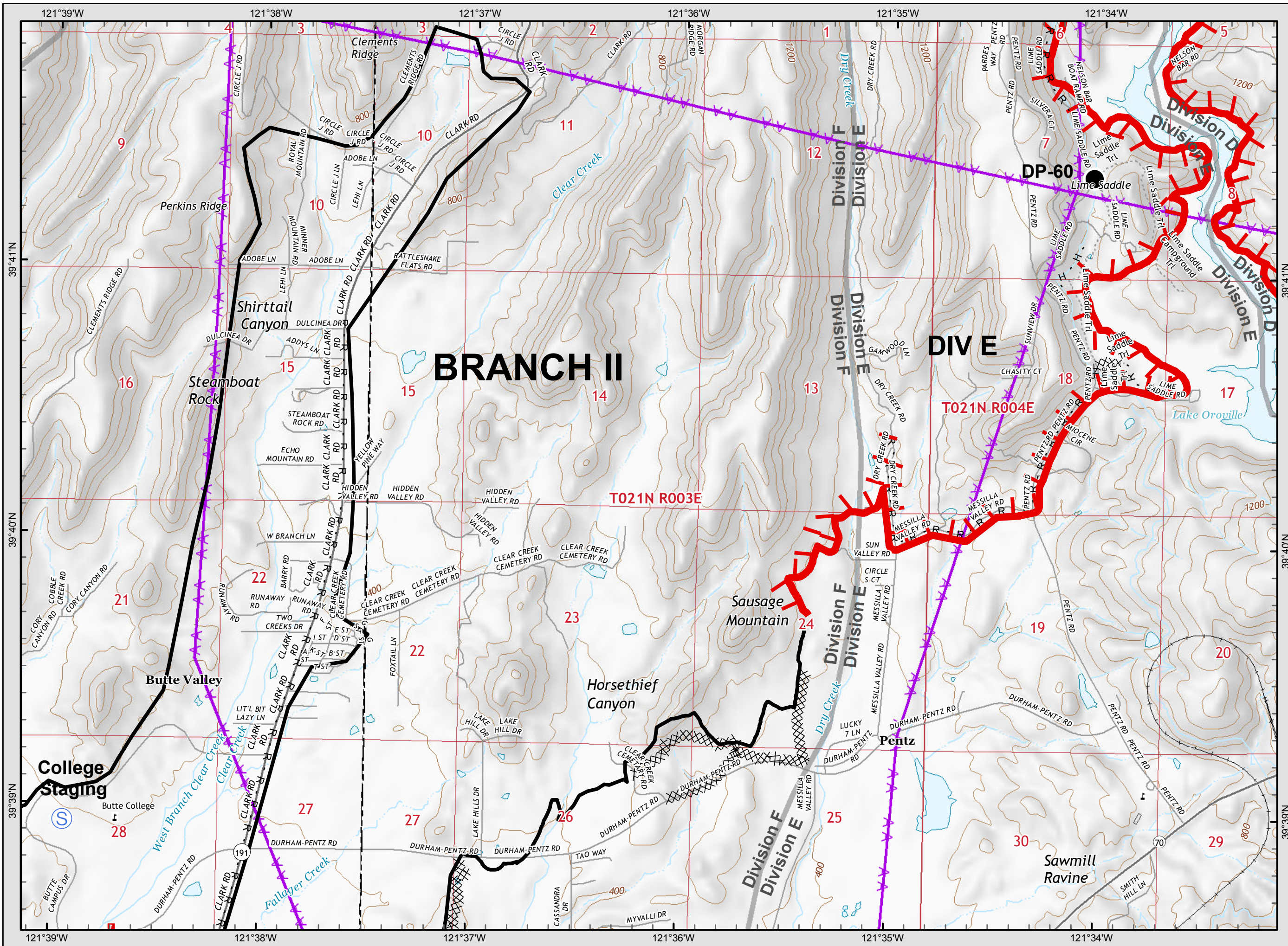
BRANCH II
Page 4



Legend

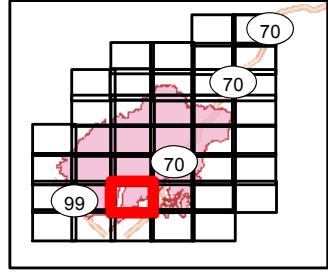
- () Division
- [] Branch
- Completed Line
- ┌ Uncontrolled Fire Edge
- XXXXX Completed Dozer Line
- X • Proposed Dozer Line
- H - Completed Hand Line
- R - Road as Completed Line
- AA Transmission Lines
- Drop Point
- ♂ Spot Fire
- Helispot
- ⊙ Staging Area
- Retardant/Mud Pit
- Highway 162
- Comms Towers





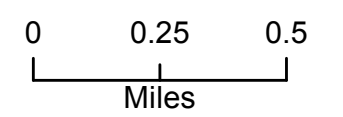
Camp Incident
 CA-BTU-016737
 November 13, 2018
 IAP Map

BRANCH II
 Page 5



Legend

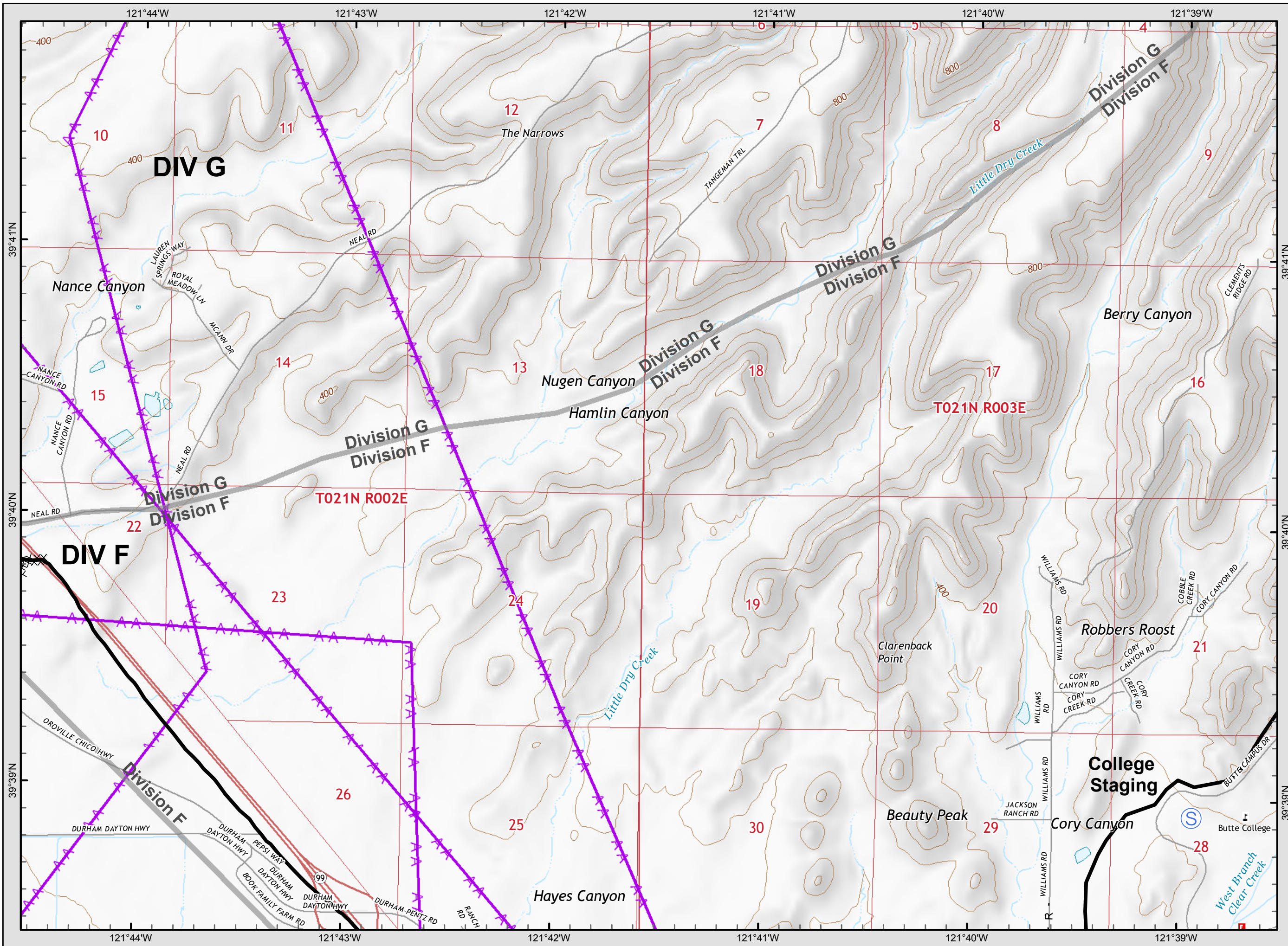
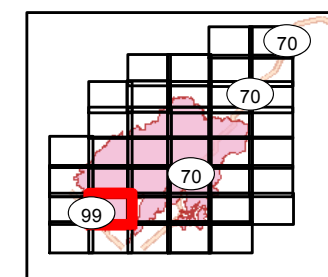
- () Division
- [] Branch
- Completed Line
- Uncontrolled Fire Edge
- XXXXX Completed Dozer Line
- X • Proposed Dozer Line
- H - Completed Hand Line
- R - Road as Completed Line
- Transmission Lines
- Drop Point
- ♂ Spot Fire
- Helispot
- ⊙ Staging Area
- Retardant/Mud Pit
- Highway 162
- Comms Towers





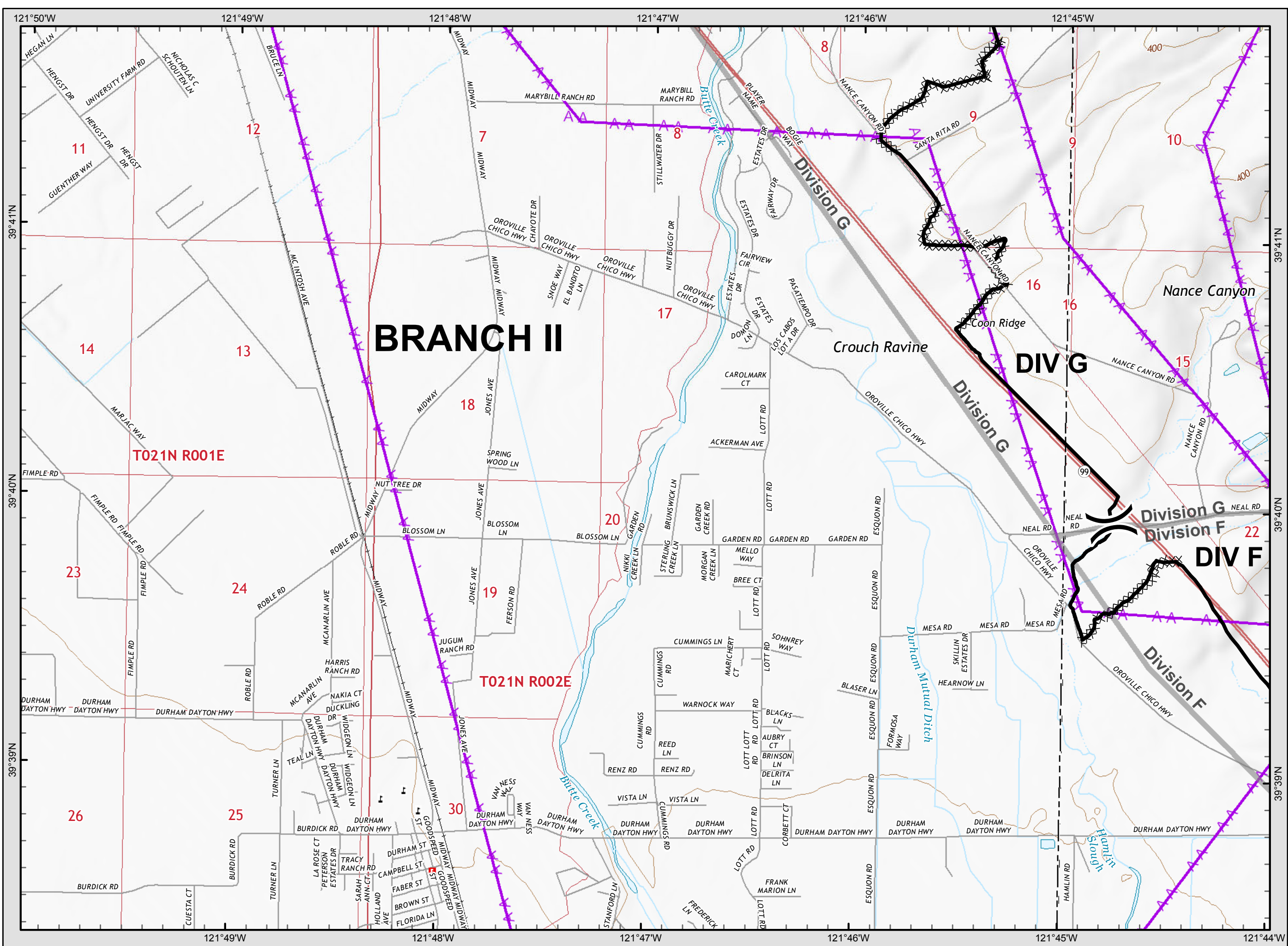
Camp Incident CA-BTU-016737 November 13, 2018 IAP Map

BRANCH II Page 6

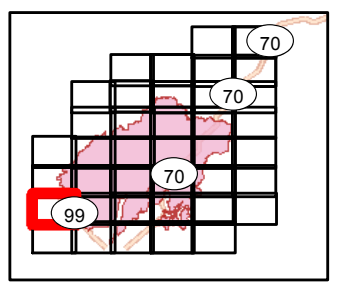


- ### Legend
- (X) Division
 - [] Branch
 - Completed Line
 - - - Uncontrolled Fire Edge
 - XXXXX Completed Dozer Line
 - Proposed Dozer Line
 - H - Completed Hand Line
 - R - Road as Completed Line
 - AA Transmission Lines
 - Drop Point
 - Spot Fire
 - Helispot
 - Staging Area
 - Retardant/Mud Pit
 - Highway 162
 - 📡 Comms Towers

0 0.25 0.5
Miles

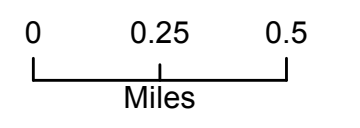


Camp Incident
CA-BTU-016737
November 13, 2018
IAP Map
BRANCH II
Page 7



Legend

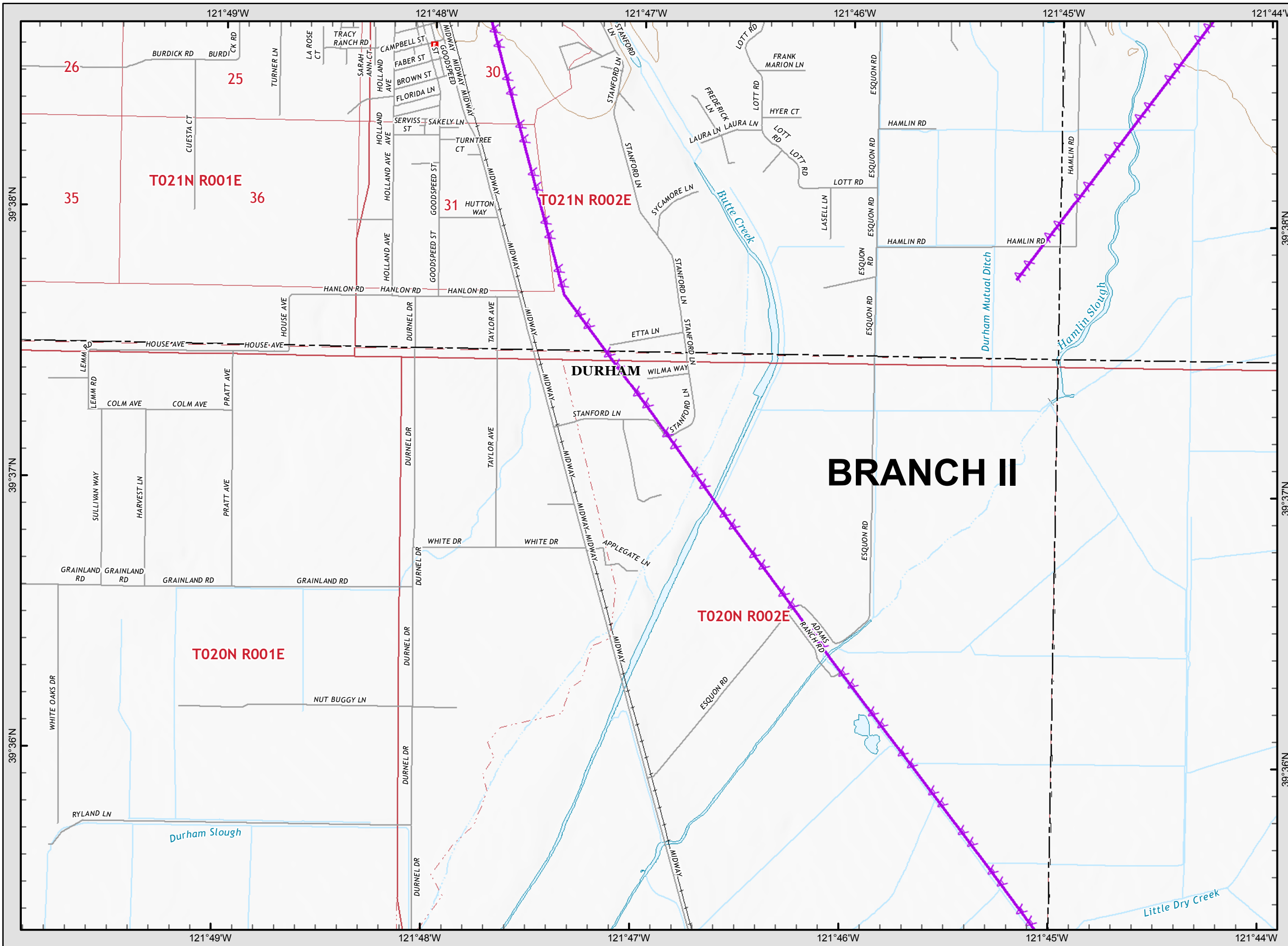
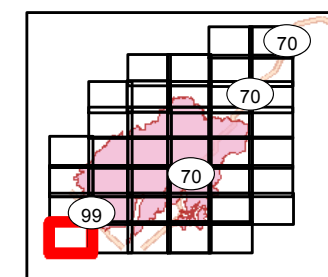
- Division
- Branch
- Completed Line
- Uncontrolled Fire Edge
- Completed Dozer Line
- Proposed Dozer Line
- Completed Hand Line
- Road as Completed Line
- Transmission Lines
- Drop Point
- Spot Fire
- Helispot
- Staging Area
- Retardant/Mud Pit
- Highway 162
- Comms Towers





Camp Incident
CA-BTU-016737
November 13, 2018
IAP Map

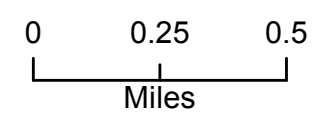
BRANCH II
Page 8



BRANCH II

Legend

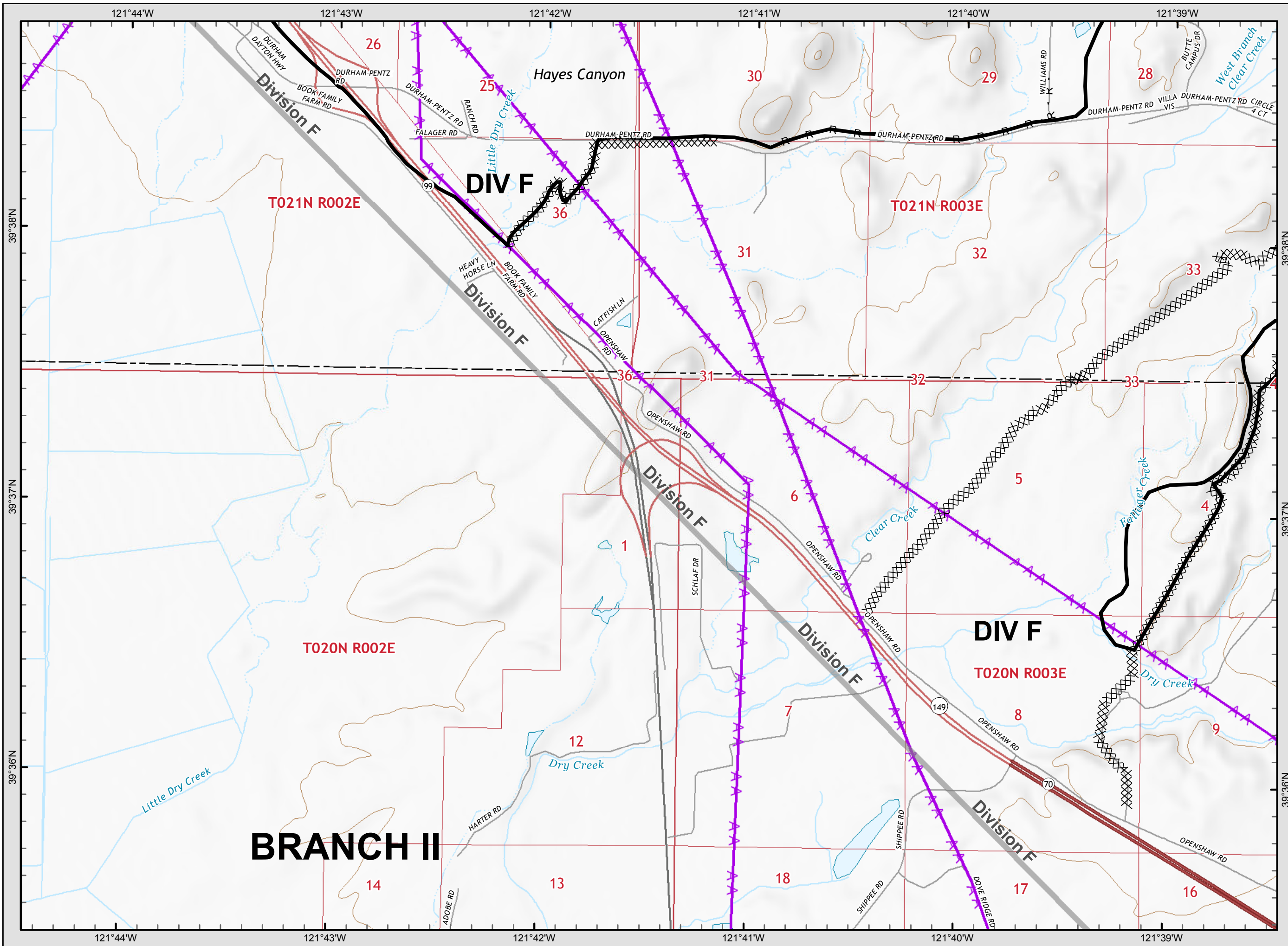
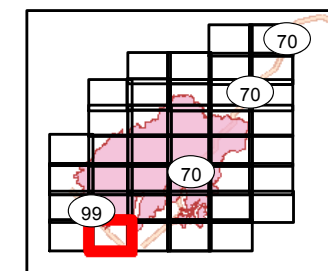
- () Division
- [] Branch
- Completed Line
- Uncontrolled Fire Edge
- XXXXX Completed Dozer Line
- X• Proposed Dozer Line
- H - Completed Hand Line
- R - Road as Completed Line
- AA Transmission Lines
- Drop Point
- ♂ Spot Fire
- Helispot
- ⊙ Staging Area
- Retardant/Mud Pit
- Highway 162
- Comms Towers





Camp Incident
CA-BTU-016737
November 13, 2018
IAP Map

BRANCH II
Page 9



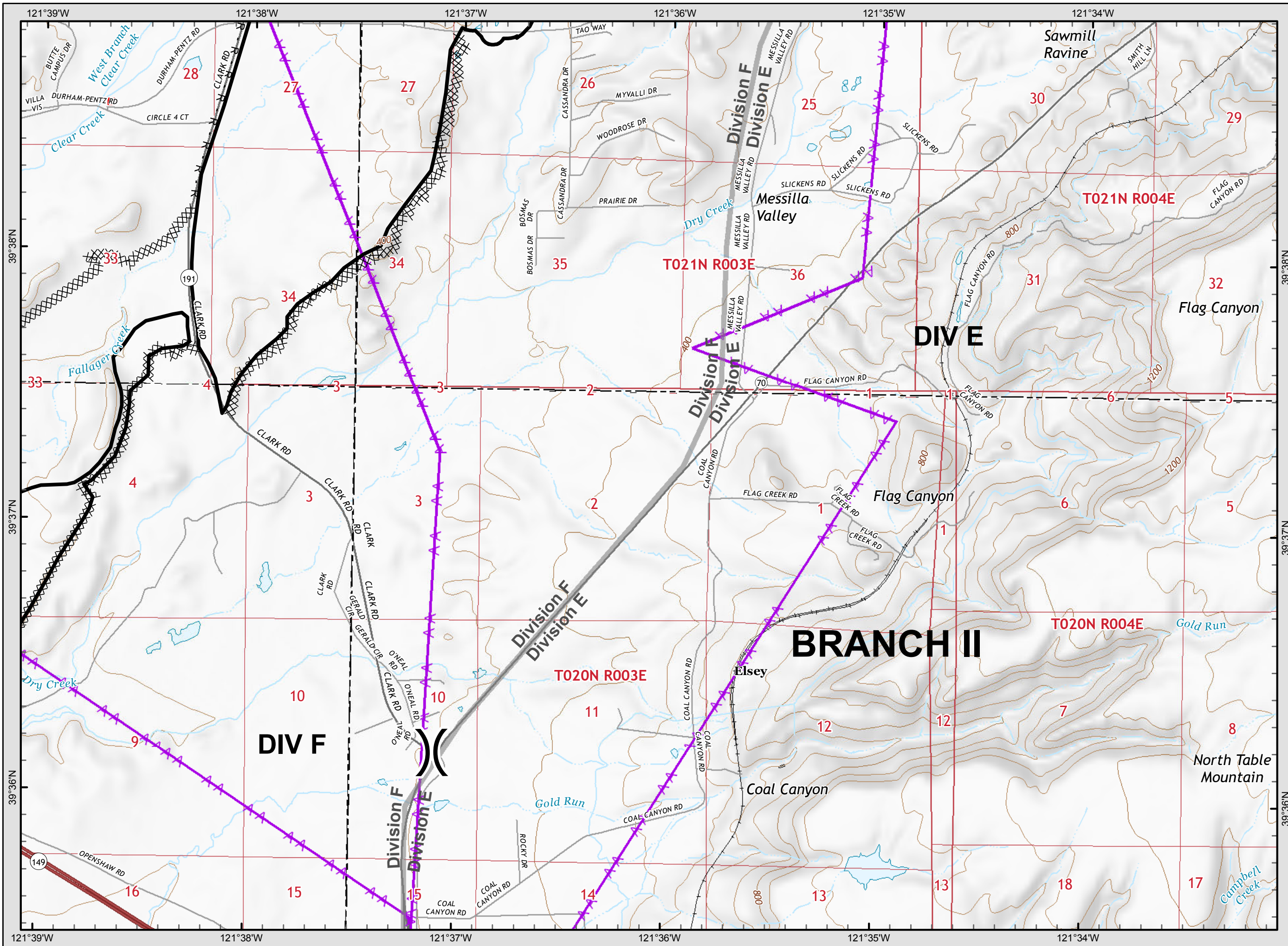
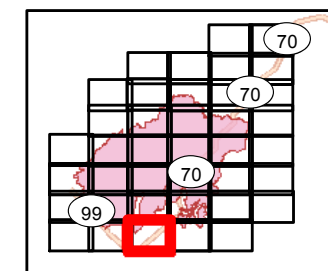
- Legend**
- () Division
 - [] Branch
 - Completed Line
 - Uncontrolled Fire Edge
 - XXXXX Completed Dozer Line
 - X • Proposed Dozer Line
 - H - Completed Hand Line
 - R - Road as Completed Line
 - AA Transmission Lines
 - Drop Point
 - ♂ Spot Fire
 - Helispot
 - ⊙ Staging Area
 - Retardant/Mud Pit
 - Highway 162
 - Comms Towers

0 0.25 0.5
Miles



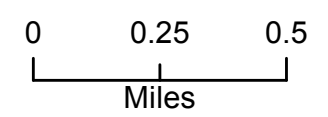
Camp Incident
CA-BTU-016737
November 13, 2018
IAP Map

BRANCH II
Page 10



Legend

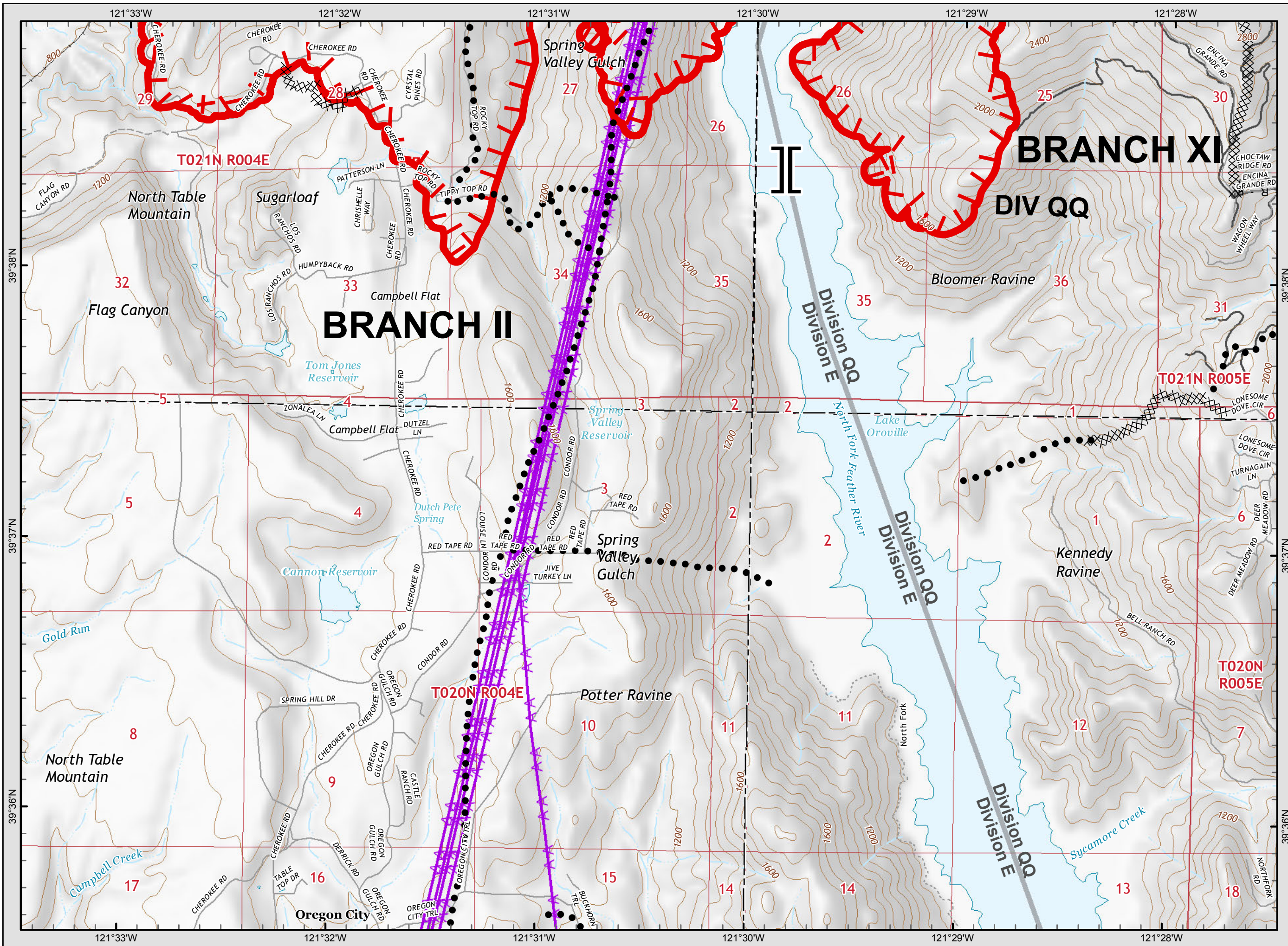
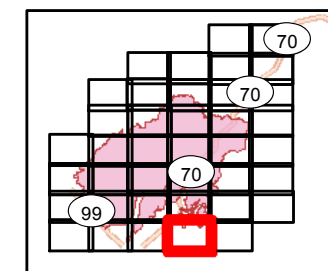
- Division
- Branch
- Completed Line
- Uncontrolled Fire Edge
- Completed Dozer Line
- Proposed Dozer Line
- Completed Hand Line
- Road as Completed Line
- Transmission Lines
- Drop Point
- Spot Fire
- Helispot
- Staging Area
- Retardant/Mud Pit
- Highway 162
- Comms Towers





Camp Incident
 CA-BTU-016737
 November 13, 2018
 IAP Map

BRANCH II
 Page 11



Legend

- () Division
- [] Branch
- Completed Line
- Uncontrolled Fire Edge
- XXXXX Completed Dozer Line
- X • Proposed Dozer Line
- H - Completed Hand Line
- R - Road as Completed Line
- AA Transmission Lines
- Drop Point
- Spot Fire
- Helispot
- Staging Area
- Retardant/Mud Pit
- Highway 162
- Comms Towers

