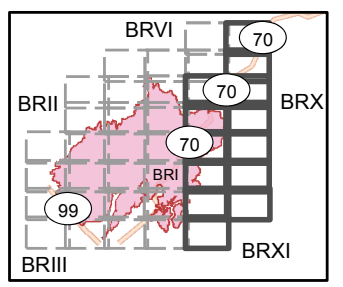
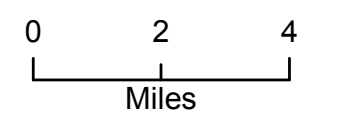


Camp Incident
CA-BTU-016737
November 14, 2018
IAP Map

Branch X/XI
Index



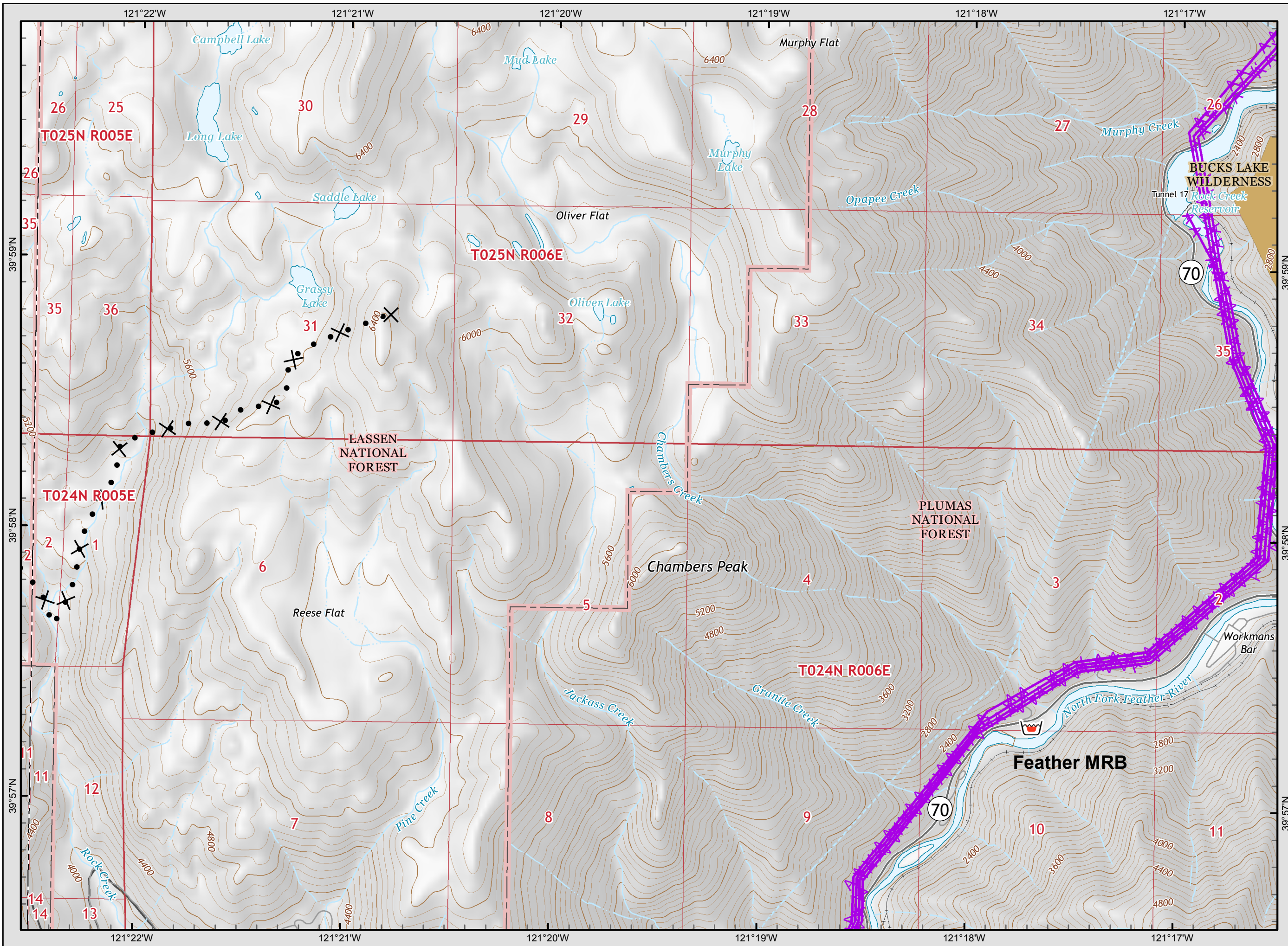
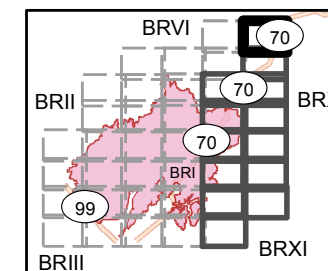
- Legend**
- Division
 - Branch
 - Completed Line
 - Uncontrolled Fire Edge
 - Completed Dozer Line
 - Proposed Dozer Line
 - Completed Hand Line
 - Road as Completed Line
 - Transmission Lines
 - Drop Point
 - Spot Fire
 - Helispot
 - Staging Area
 - Retardant/Mud Pit
 - Highway 162
 - Comms Towers
 - Unimproved Landing Area





Camp Incident
CA-BTU-016737
November 14, 2018
IAP Map

Branch X/XI
Page 1



Legend

- () Division
- [] Branch
- Completed Line
- Uncontrolled Fire Edge
- XXXXX Completed Dozer Line
- X • Proposed Dozer Line
- H - Completed Hand Line
- R - Road as Completed Line
- AA Transmission Lines
- Drop Point
- ♂ Spot Fire
- Helispot
- ⊙ Staging Area
- 🍷 Retardant/Mud Pit
- ⬜ Highway 162
- 📡 Comms Towers
- U Unimproved Landing Area

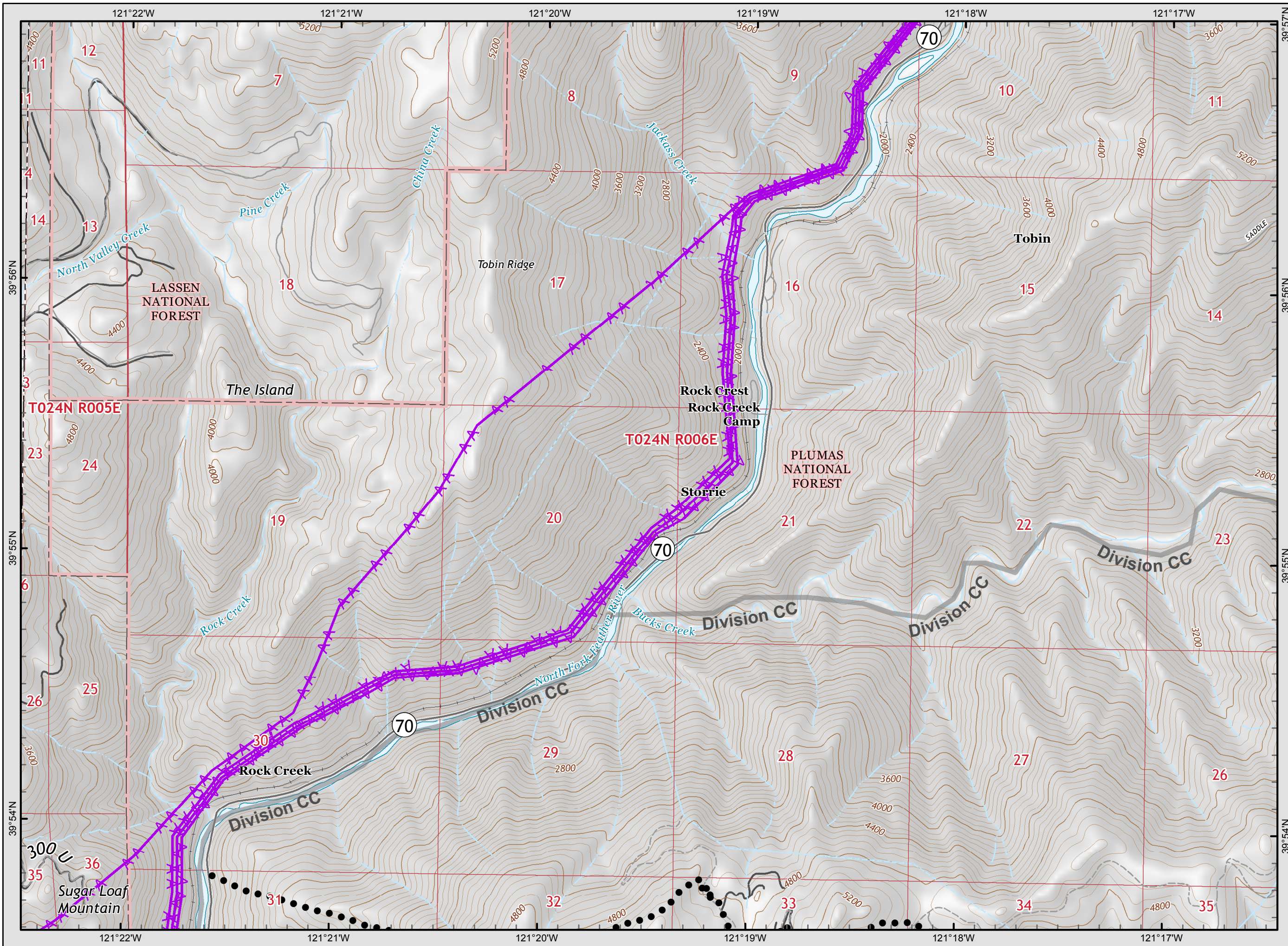
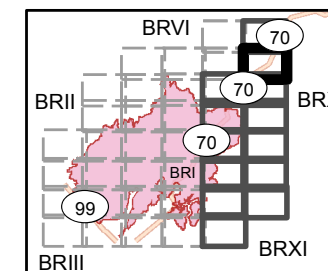
0 0.25 0.5
Miles



Camp Incident
CA-BTU-016737
November 14, 2018
IAP Map

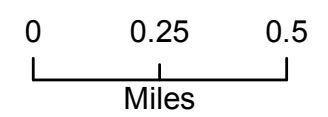
Branch X/XI

Page 2



Legend

- Division
- Branch
- Completed Line
- Uncontrolled Fire Edge
- Completed Dozer Line
- Proposed Dozer Line
- Completed Hand Line
- Road as Completed Line
- Transmission Lines
- Drop Point
- Spot Fire
- Helispot
- Staging Area
- Retardant/Mud Pit
- Highway 162
- Comms Towers
- Unimproved Landing Area

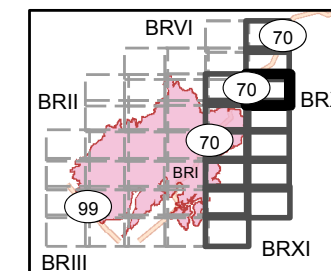




Camp Incident
CA-BTU-016737
November 14, 2018
IAP Map

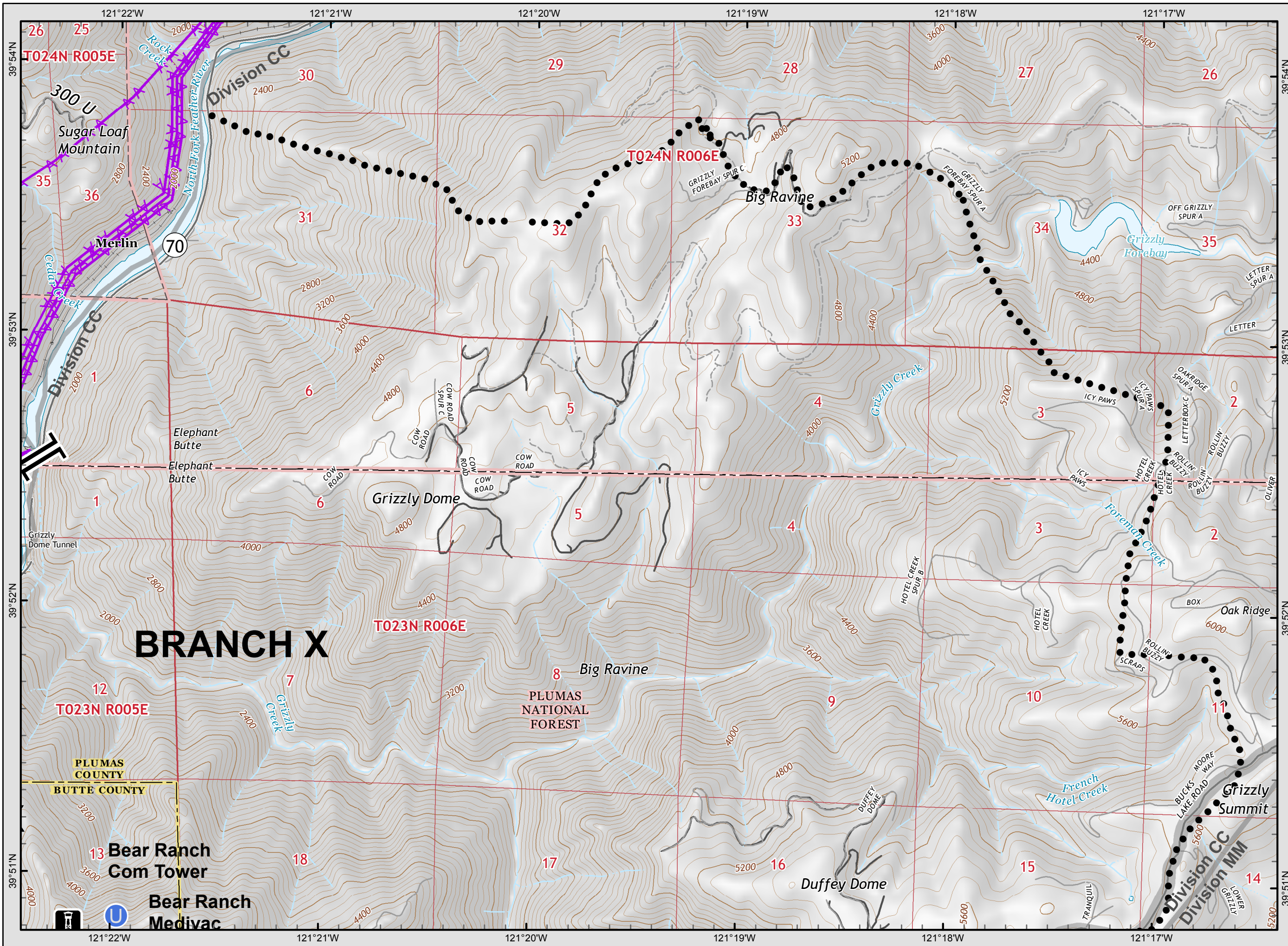
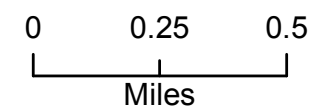
Branch X/XI

Page 3



Legend

- Division
- Branch
- Completed Line
- Uncontrolled Fire Edge
- Completed Dozer Line
- Proposed Dozer Line
- Completed Hand Line
- Road as Completed Line
- Transmission Lines
- Drop Point
- Spot Fire
- Helispot
- Staging Area
- Retardant/Mud Pit
- Highway 162
- Comms Towers
- Unimproved Landing Area



BRANCH X

T023N R005E

T024N R006E

T023N R006E

Bear Ranch Com Tower

Bear Ranch Medivac

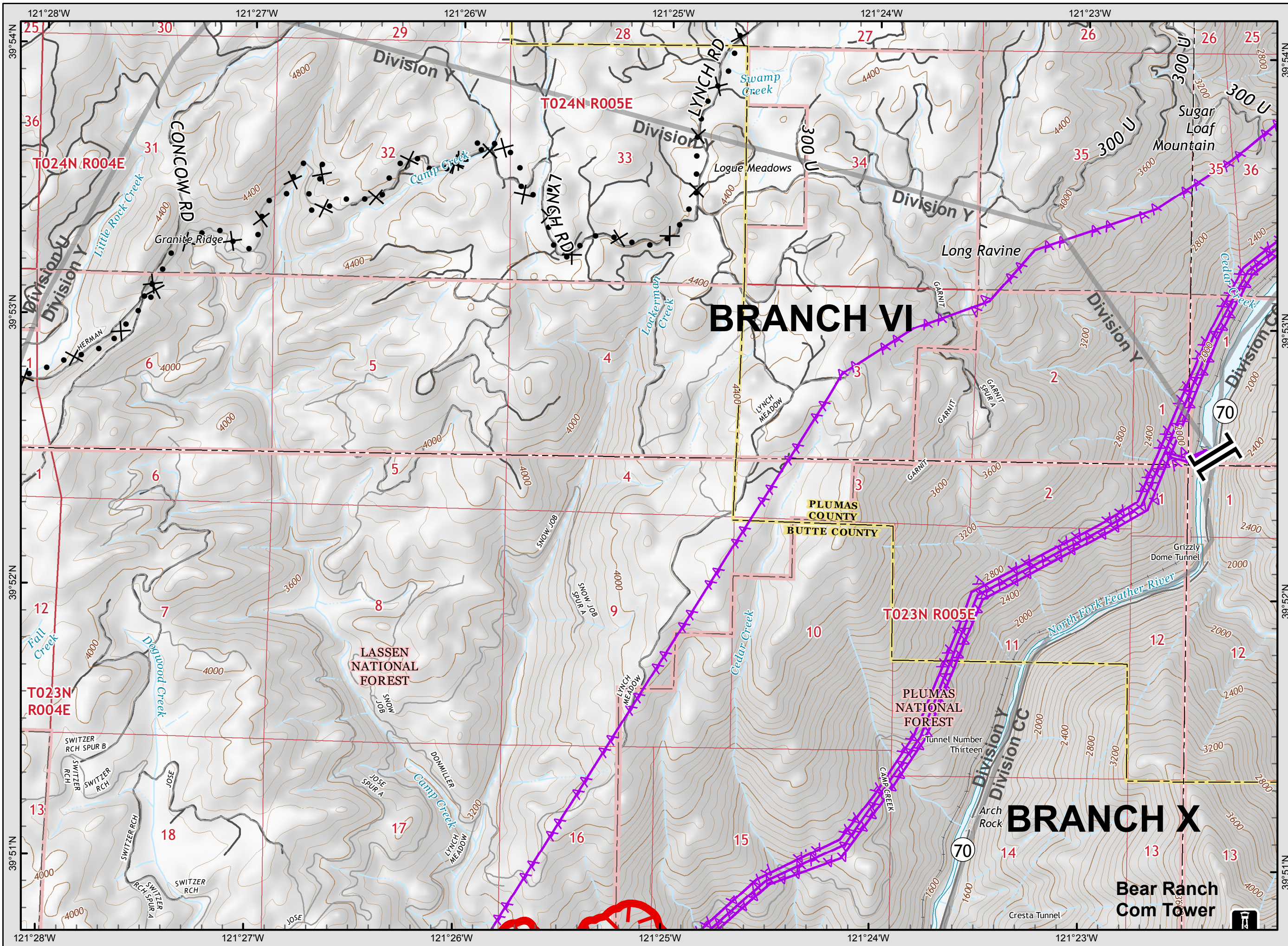
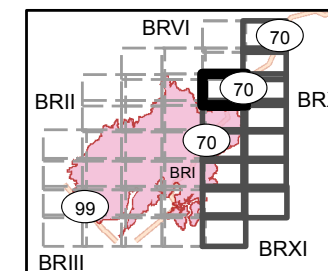
Grizzly Summit



Camp Incident
CA-BTU-016737
November 14, 2018
IAP Map

Branch X/XI

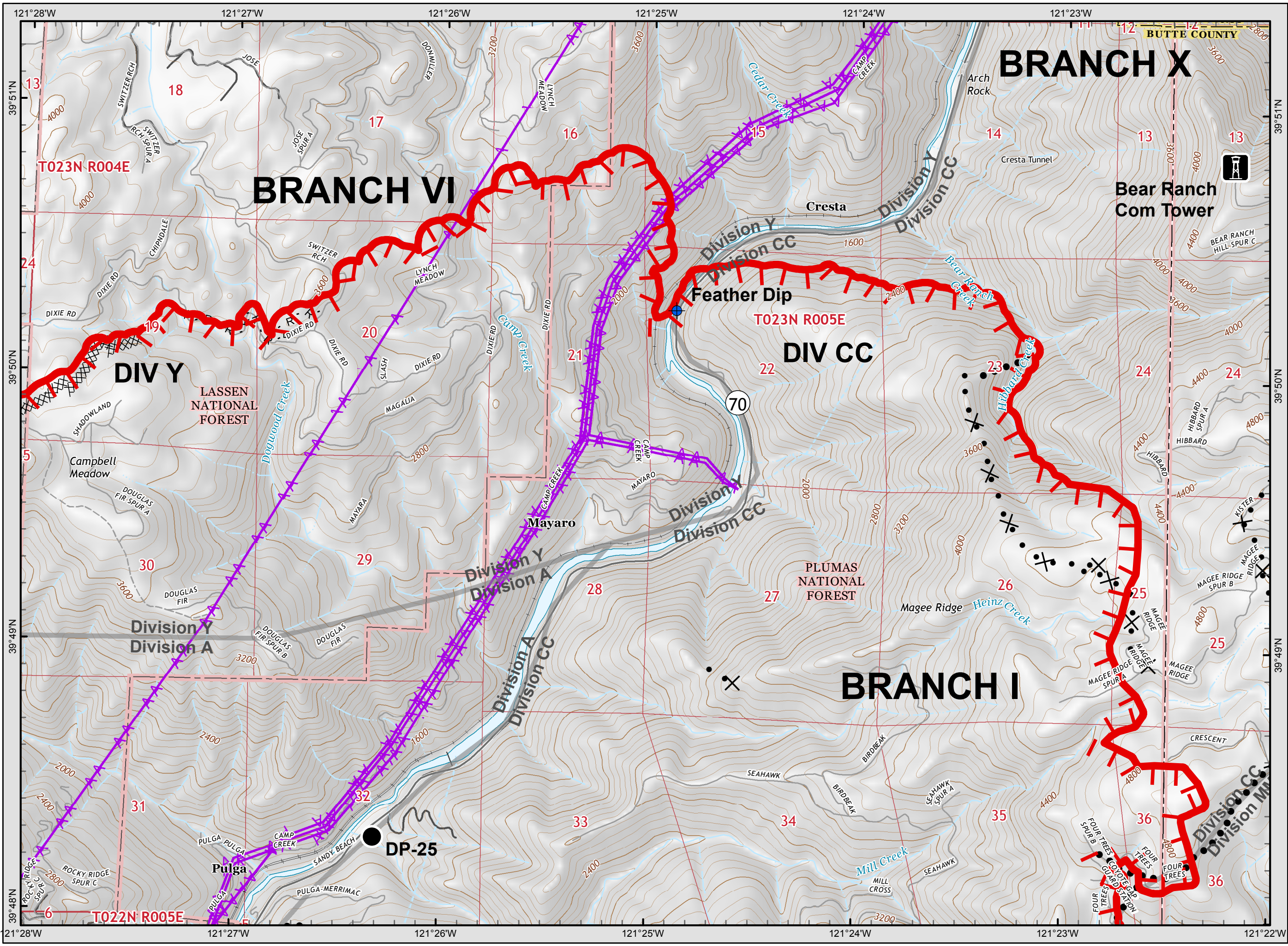
Page 4



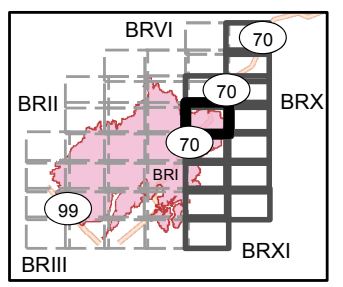
Legend

- () Division
- [] Branch
- Completed Line
- Uncontrolled Fire Edge
- XXXXX Completed Dozer Line
- X • Proposed Dozer Line
- H - Completed Hand Line
- R - Road as Completed Line
- AA Transmission Lines
- Drop Point
- ♂ Spot Fire
- Helispot
- ⊙ Staging Area
- Retardant/Mud Pit
- Highway 162
- Comms Towers
- U Unimproved Landing Area

0 0.25 0.5
Miles

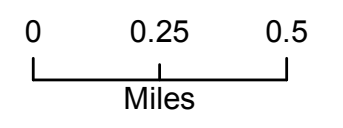


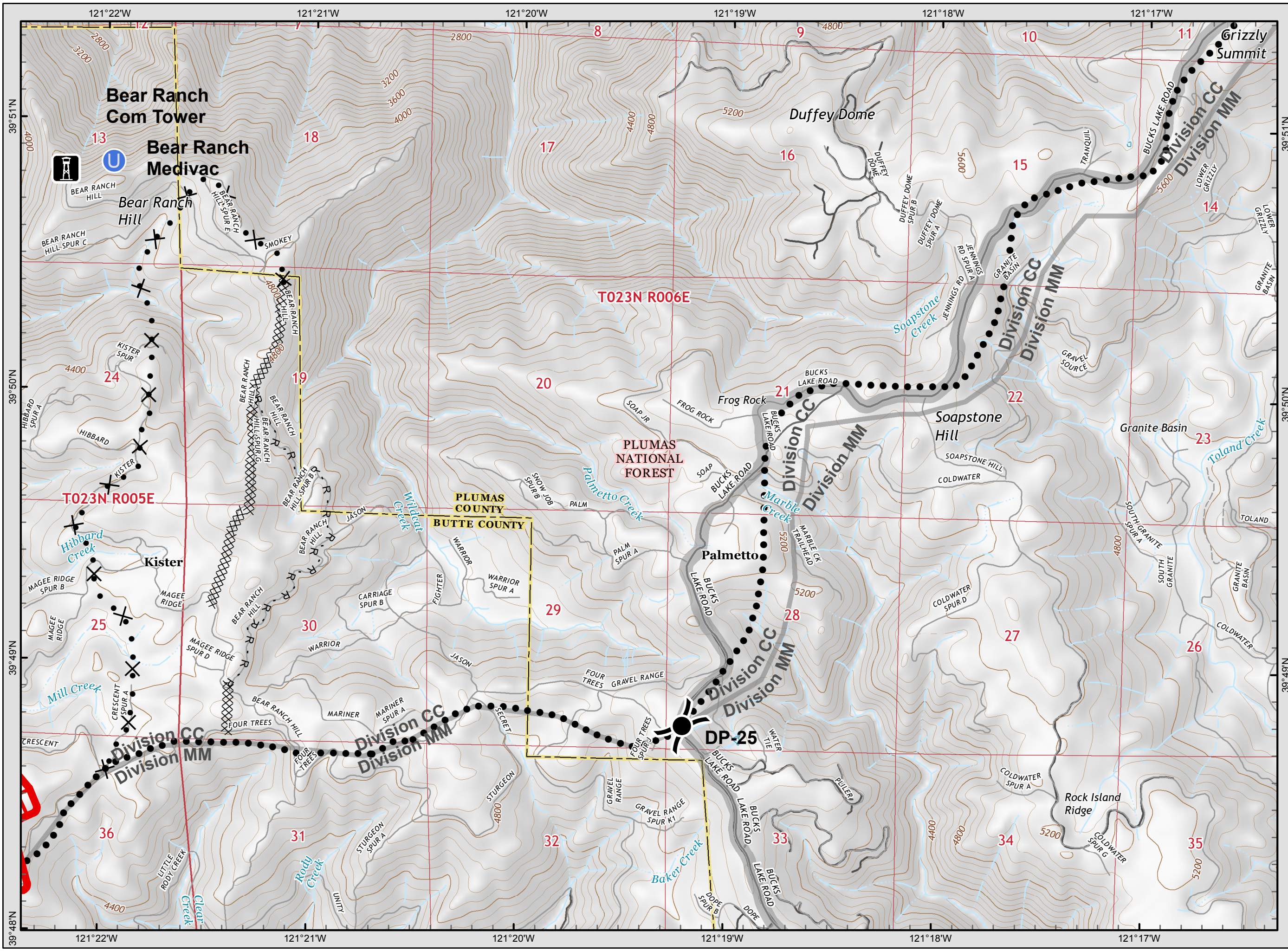
Camp Incident
CA-BTU-016737
November 14, 2018
IAP Map
Branch X/XI
Page 5



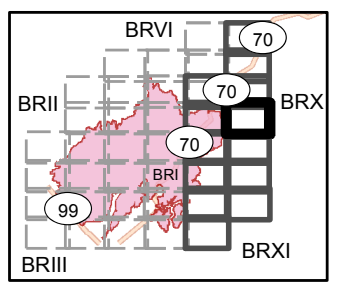
Legend

- () Division
- [] Branch
- Completed Line
- Uncontrolled Fire Edge
- XXXXX Completed Dozer Line
- X • Proposed Dozer Line
- H - Completed Hand Line
- R - Road as Completed Line
- AA Transmission Lines
- Drop Point
- ♂ Spot Fire
- Helispot
- ⊙ Staging Area
- Retardant/Mud Pit
- Highway 162
- Comms Towers
- U Unimproved Landing Area



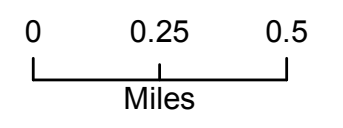


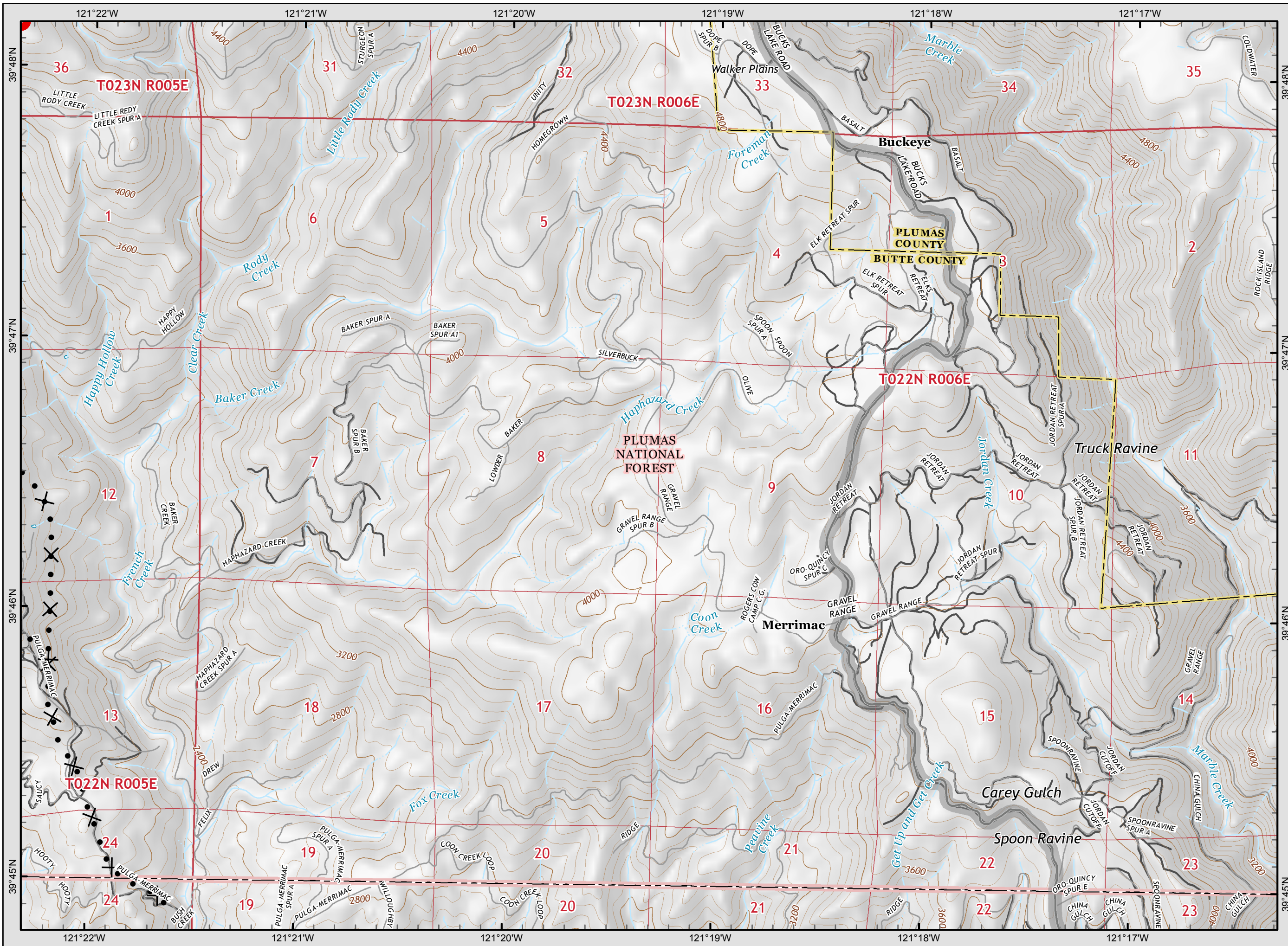
Camp Incident
CA-BTU-016737
November 14, 2018
IAP Map
Branch X/XI
Page 6



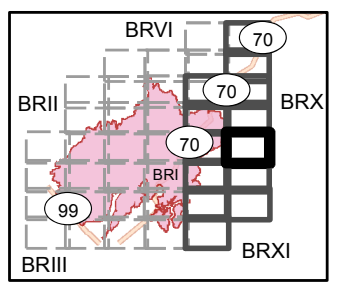
Legend

- () Division
- [] Branch
- Completed Line
- T Uncontrolled Fire Edge
- XXXXX Completed Dozer Line
- X • Proposed Dozer Line
- H - Completed Hand Line
- R - Road as Completed Line
- AA Transmission Lines
- Drop Point
- Spot Fire
- Helispot
- Staging Area
- 🪣 Retardant/Mud Pit
- 162 Highway 162
- 📡 Comms Towers
- U Unimproved Landing Area



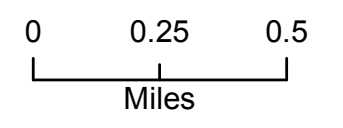


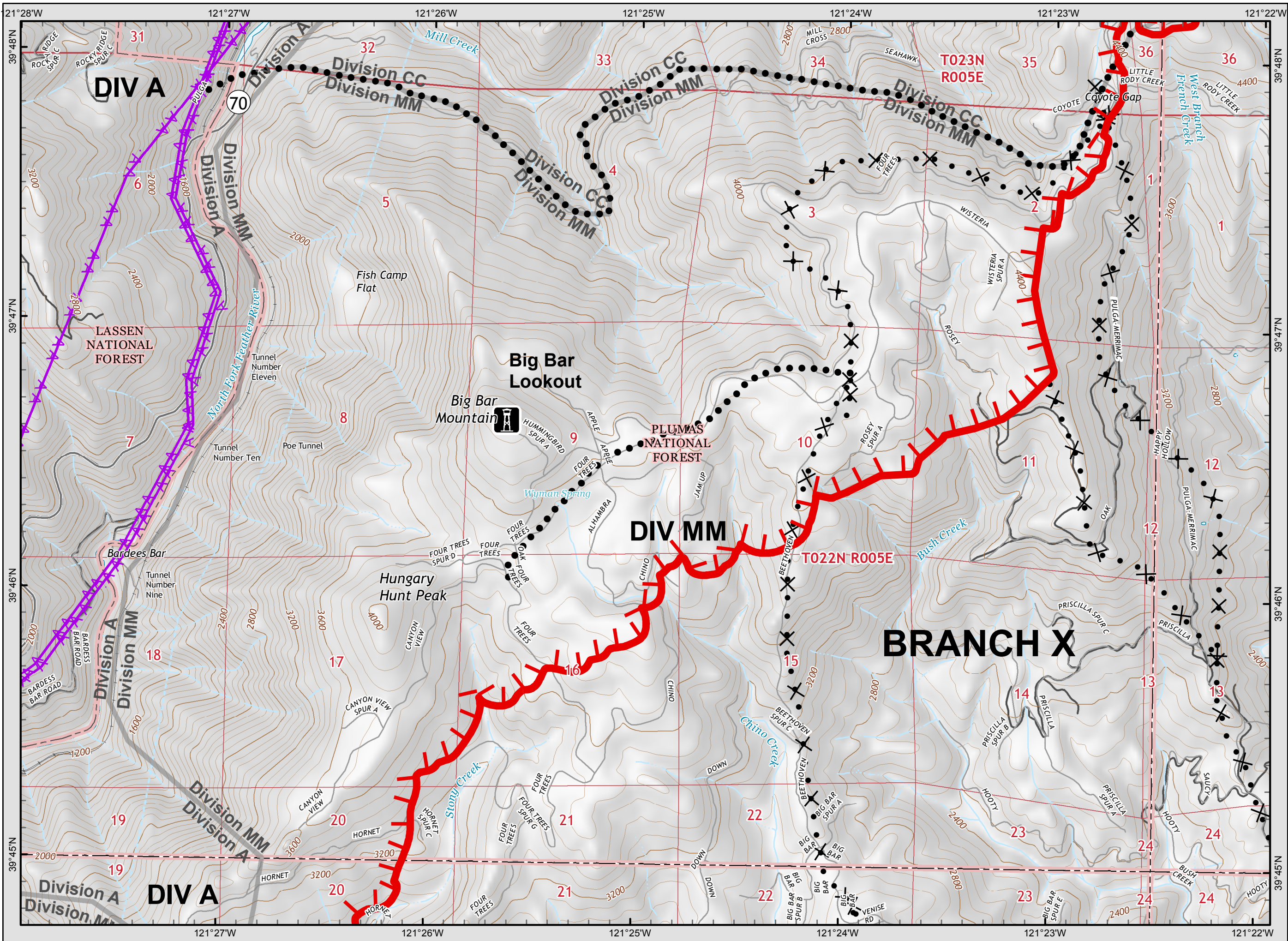
Camp Incident
CA-BTU-016737
November 14, 2018
IAP Map
Branch X/XI
Page 7



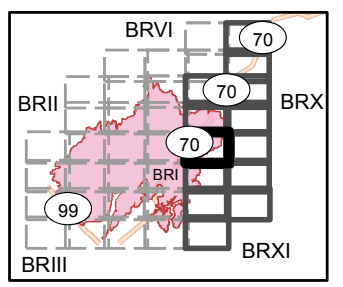
Legend

- () Division
- [] Branch
- Completed Line
- Uncontrolled Fire Edge
- XXXXX Completed Dozer Line
- X • Proposed Dozer Line
- H - Completed Hand Line
- R - Road as Completed Line
- AA Transmission Lines
- Drop Point
- ♂ Spot Fire
- Helispot
- ⊙ Staging Area
- Retardant/Mud Pit
- Highway 162
- Comms Towers
- U Unimproved Landing Area



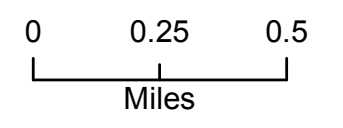


Camp Incident
 CA-BTU-016737
 November 14, 2018
 IAP Map
Branch X/XI
 Page 8



Legend

- () Division
- [] Branch
- Completed Line
- Uncontrolled Fire Edge
- XXXXX Completed Dozer Line
- X • Proposed Dozer Line
- H - Completed Hand Line
- R - Road as Completed Line
- Transmission Lines
- Drop Point
- ♂ Spot Fire
- Helispot
- Staging Area
- Retardant/Mud Pit
- Highway 162
- Comms Towers
- Unimproved Landing Area

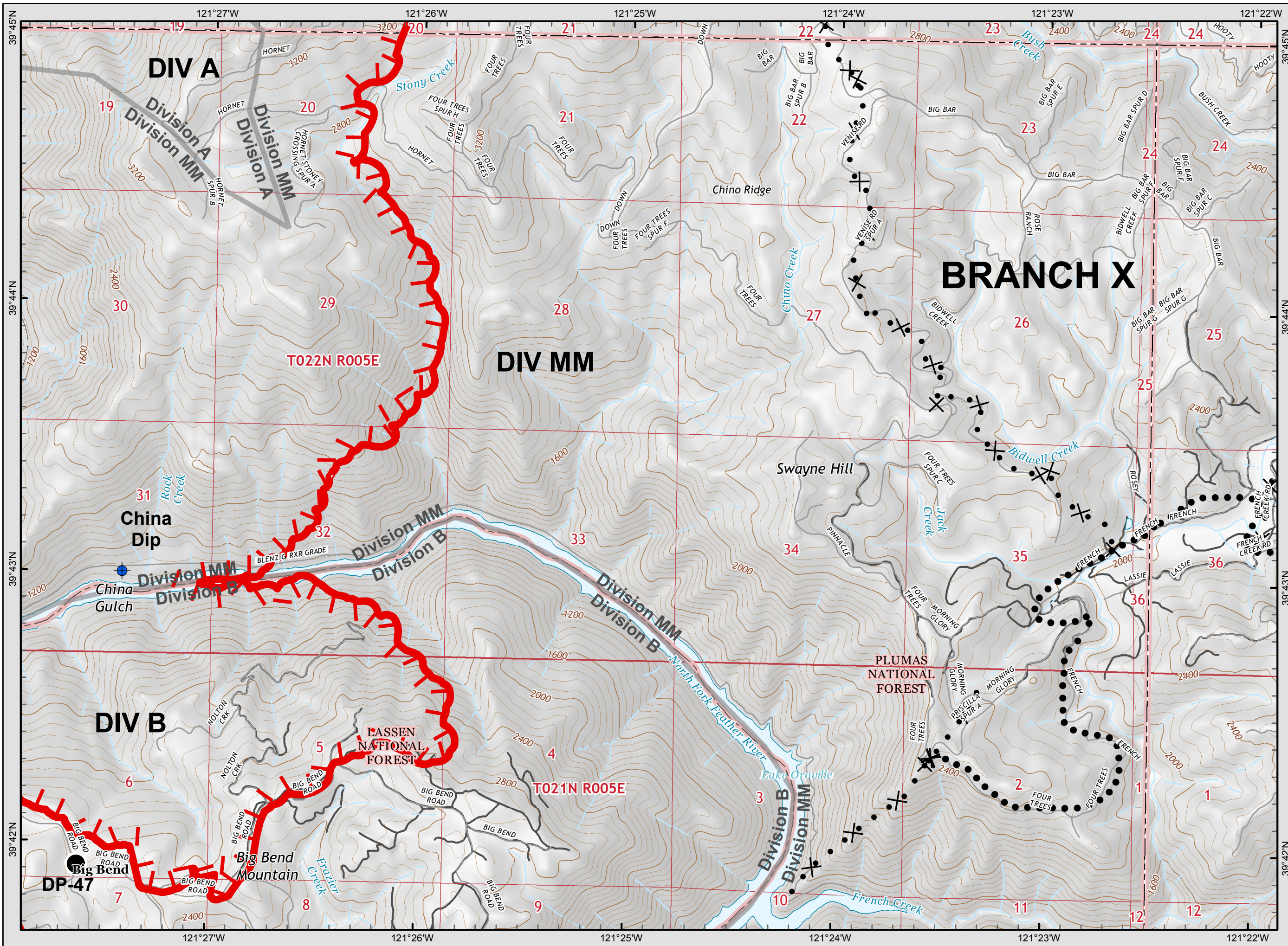
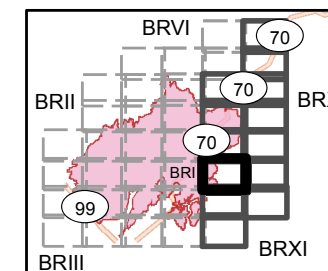




Camp Incident
CA-BTU-016737
November 14, 2018
IAP Map

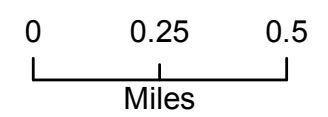
Branch X/XI

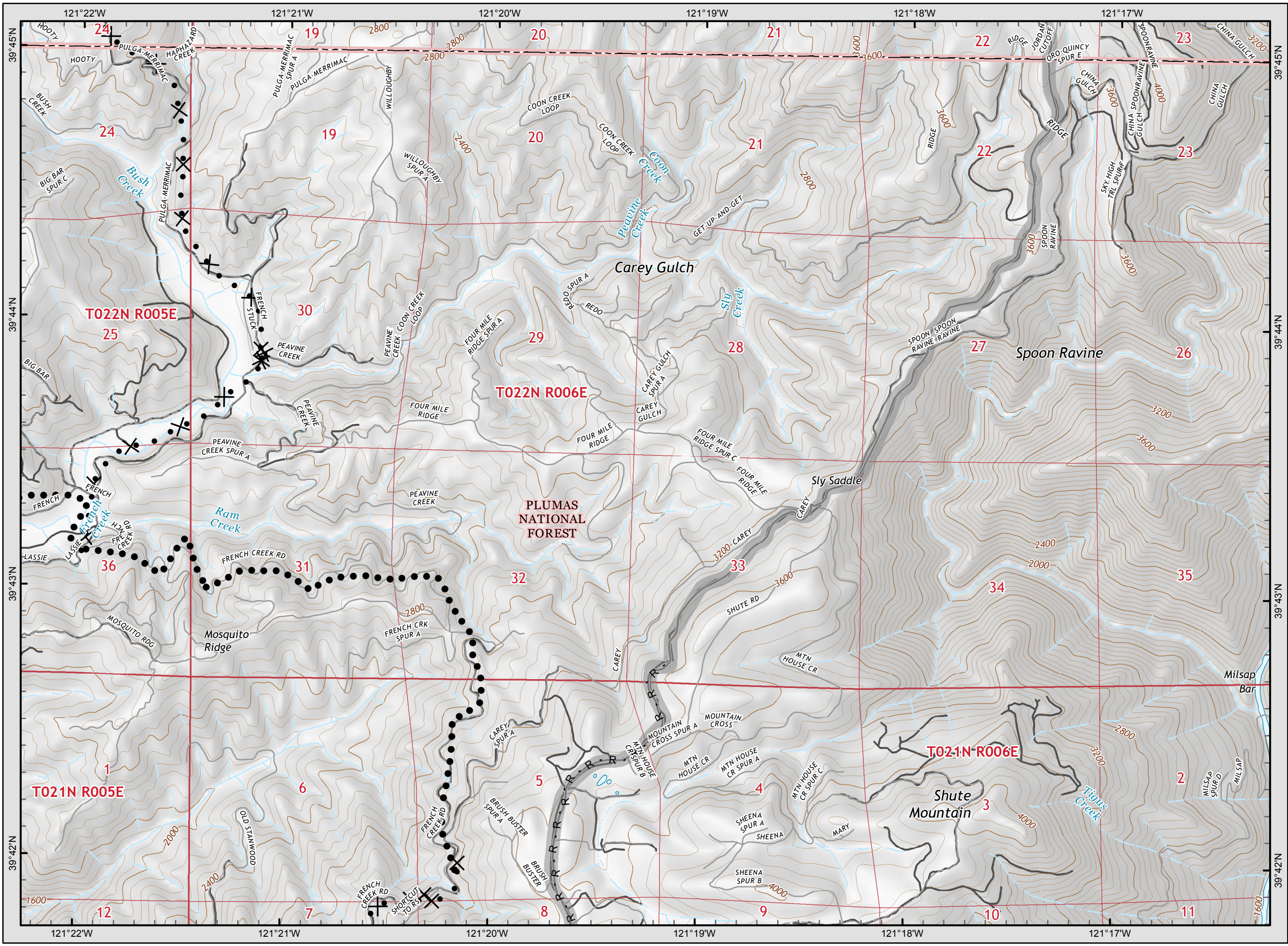
Page 9



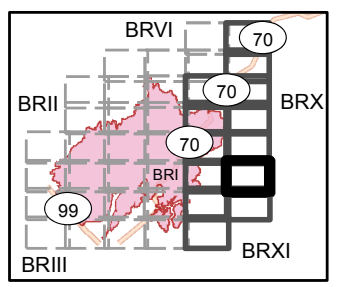
Legend

- () Division
- [] Branch
- Completed Line
- ┃ Uncontrolled Fire Edge
- XXXXX Completed Dozer Line
- X • Proposed Dozer Line
- H - Completed Hand Line
- R - Road as Completed Line
- AA Transmission Lines
- Drop Point
- ♂ Spot Fire
- Helispot
- ⊙ Staging Area
- Retardant/Mud Pit
- Highway 162
- Comms Towers
- U Unimproved Landing Area



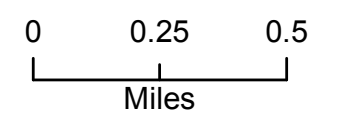


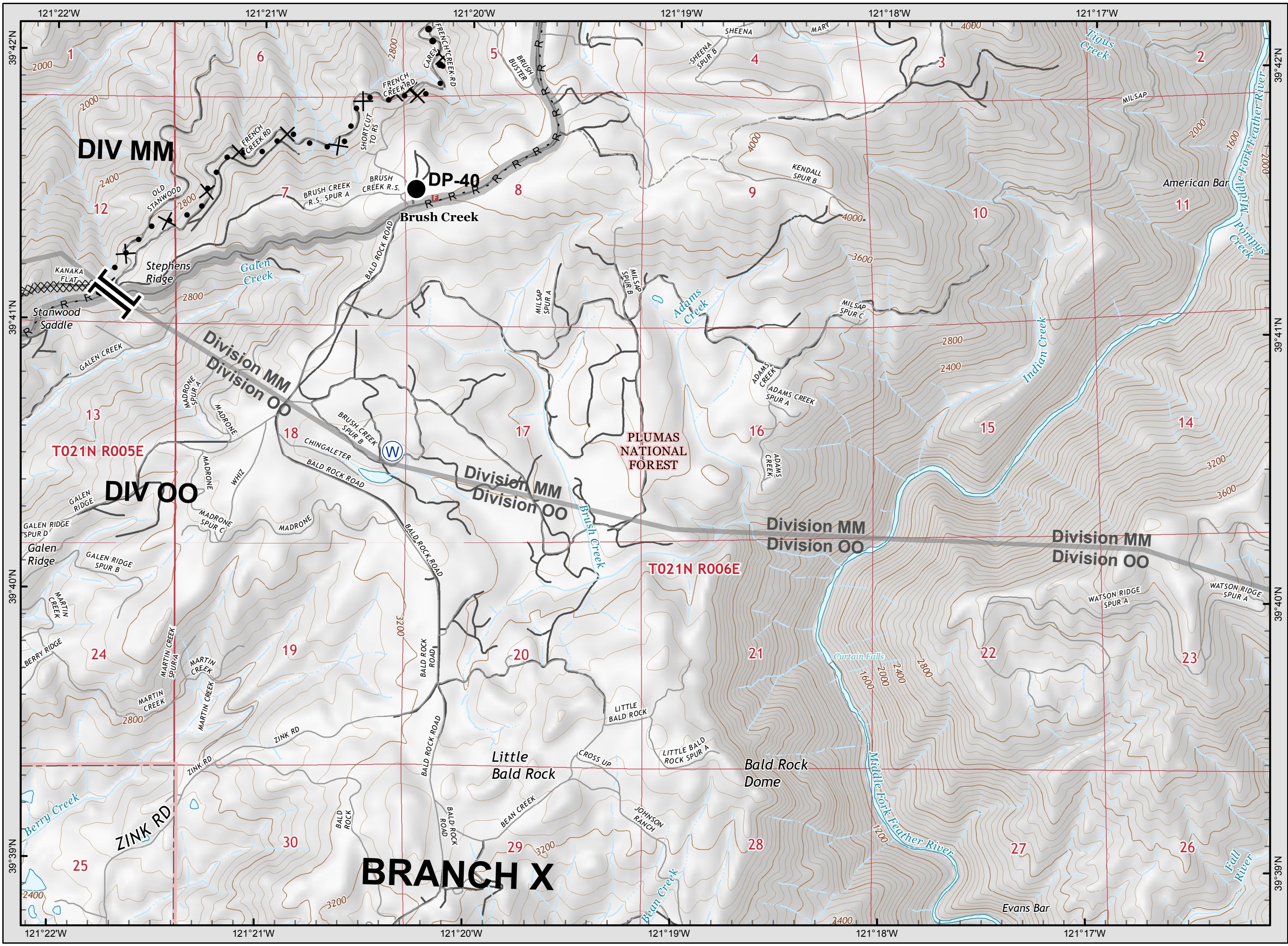
Camp Incident
CA-BTU-016737
November 14, 2018
IAP Map
Branch X/XI
Page 10



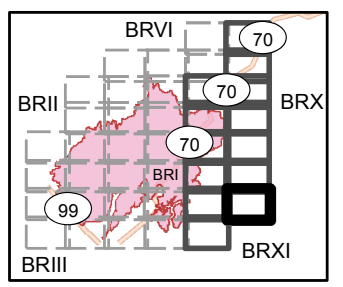
Legend

- () Division
- [] Branch
- Completed Line
- Uncontrolled Fire Edge
- XXXXX Completed Dozer Line
- X • Proposed Dozer Line
- H - Completed Hand Line
- R - Road as Completed Line
- AA Transmission Lines
- Drop Point
- ♂ Spot Fire
- Helispot
- ⊙ Staging Area
- Retardant/Mud Pit
- Highway 162
- Comms Towers
- U Unimproved Landing Area



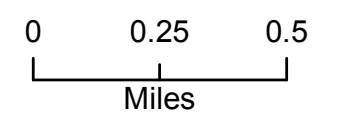
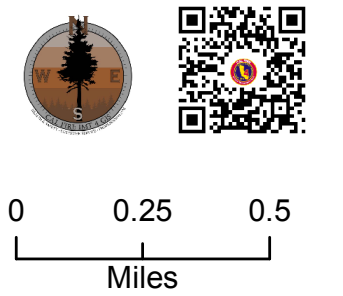


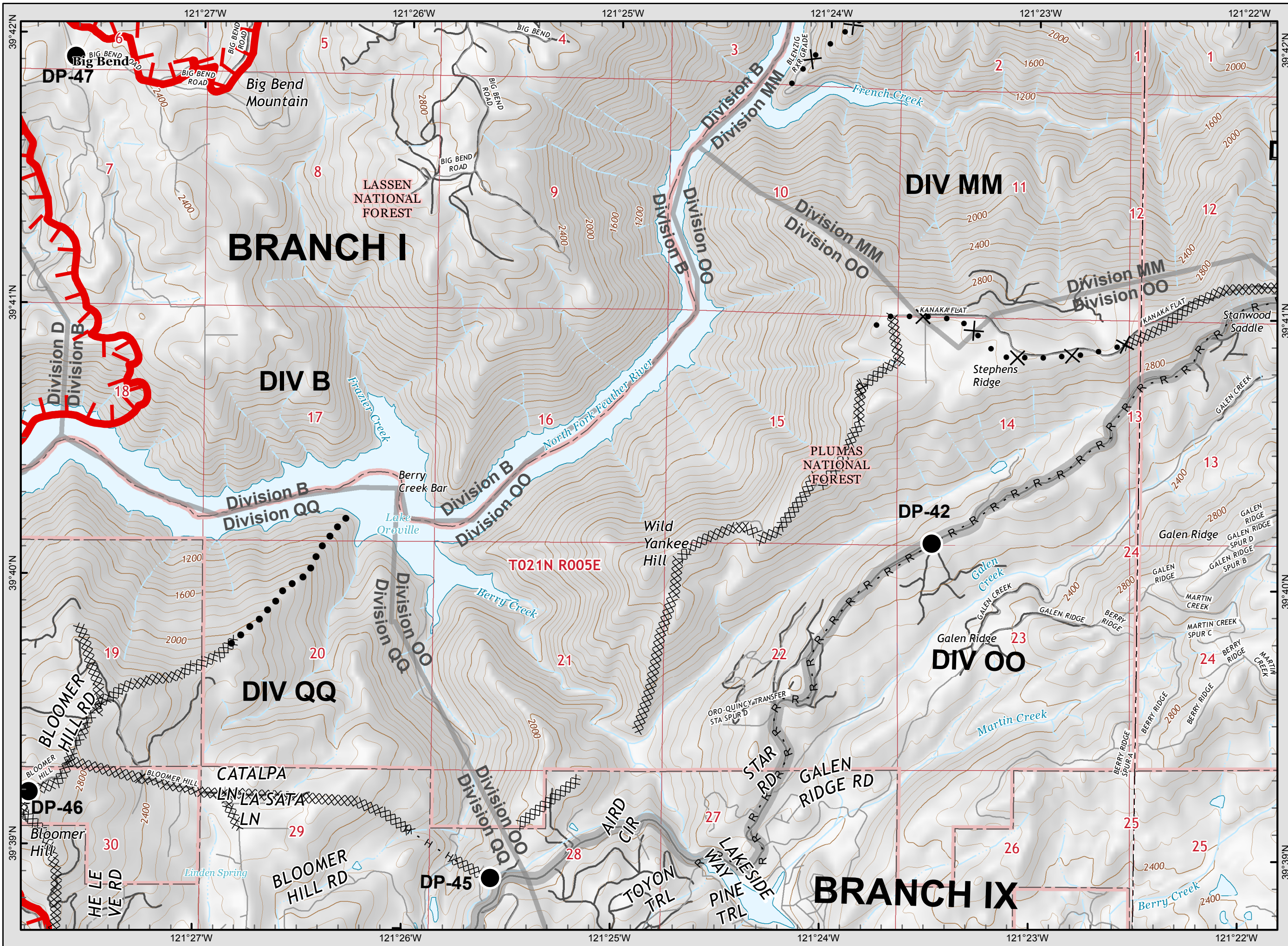
Camp Incident
CA-BTU-016737
November 14, 2018
IAP Map
Branch X/XI
Page 11



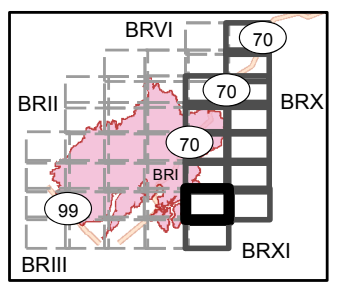
Legend

- () Division
- [] Branch
- Completed Line
- Uncontrolled Fire Edge
- XXXXX Completed Dozer Line
- X • Proposed Dozer Line
- H - Completed Hand Line
- R - Road as Completed Line
- AA Transmission Lines
- Drop Point
- ♂ Spot Fire
- Helispot
- ⊙ Staging Area
- Retardant/Mud Pit
- Highway 162
- Comms Towers
- U Unimproved Landing Area





Camp Incident
CA-BTU-016737
November 14, 2018
IAP Map
Branch X/XI
Page 12



Legend

- () Division
- [] Branch
- Completed Line
- Uncontrolled Fire Edge
- XXXXX Completed Dozer Line
- X • Proposed Dozer Line
- H - Completed Hand Line
- R - Road as Completed Line
- Transmission Lines
- Drop Point
- ♂ Spot Fire
- Helispot
- ⊙ Staging Area
- Retardant/Mud Pit
- Highway 162
- Comms Towers
- U Unimproved Landing Area

