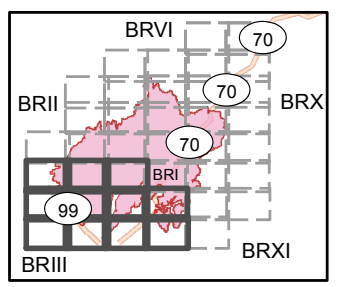


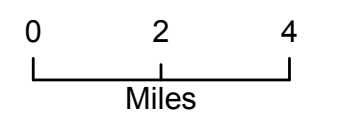
Camp Incident
CA-BTU-016737
November 14, 2018
IAP Map

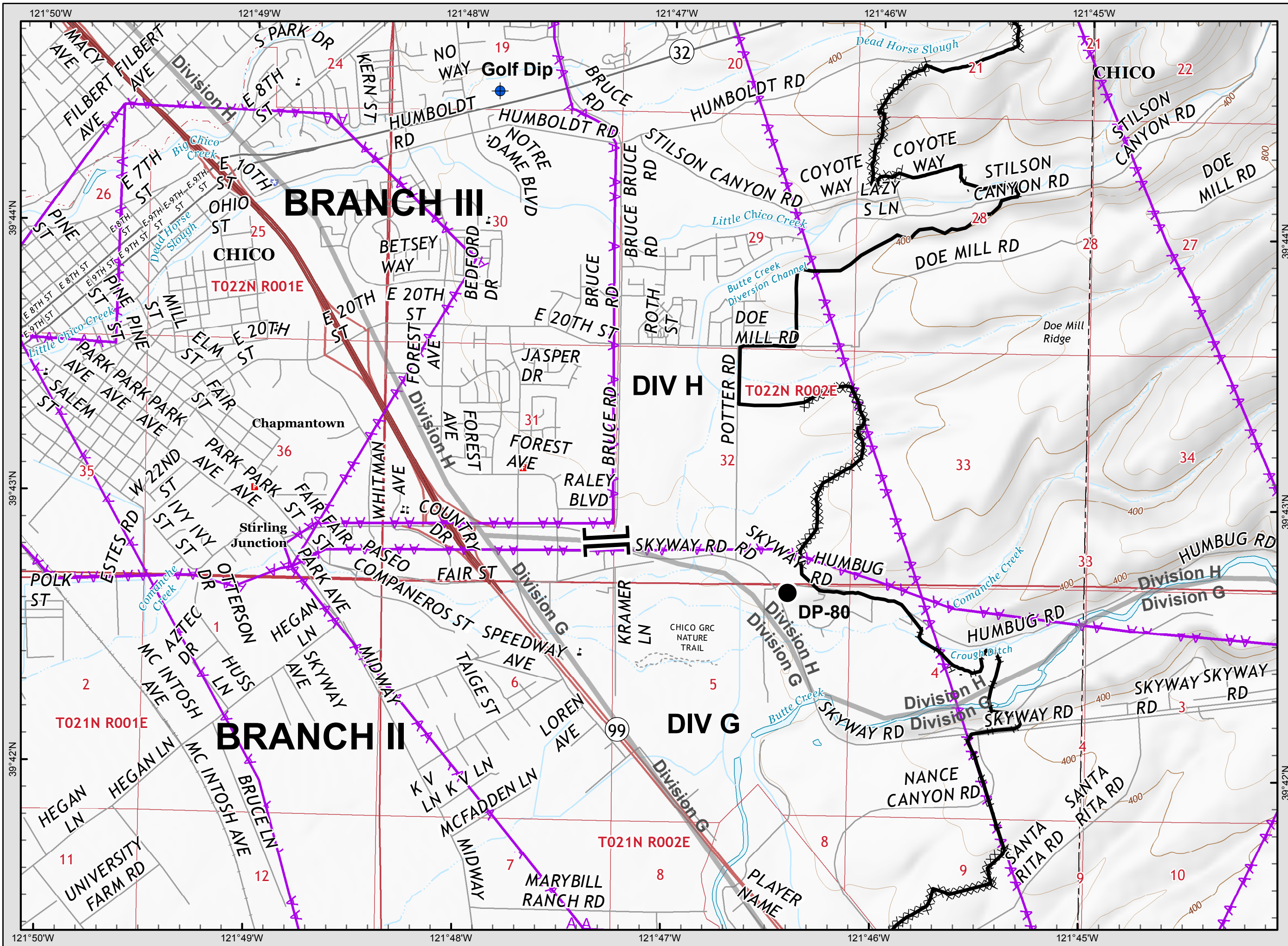
Branch II
Index



Legend

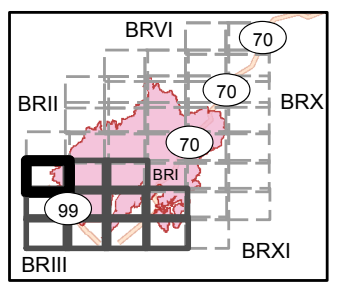
- Division
- Branch
- Completed Line
- Uncontrolled Fire Edge
- Completed Dozer Line
- Proposed Dozer Line
- Completed Hand Line
- Road as Completed Line
- Transmission Lines
- Drop Point
- Spot Fire
- Helispot
- Staging Area
- Retardant/Mud Pit
- Highway 162
- Comms Towers
- Unimproved Landing Area





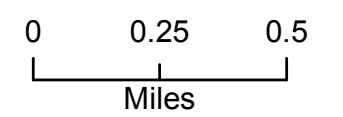
Camp Incident
CA-BTU-016737
November 14, 2018
IAP Map

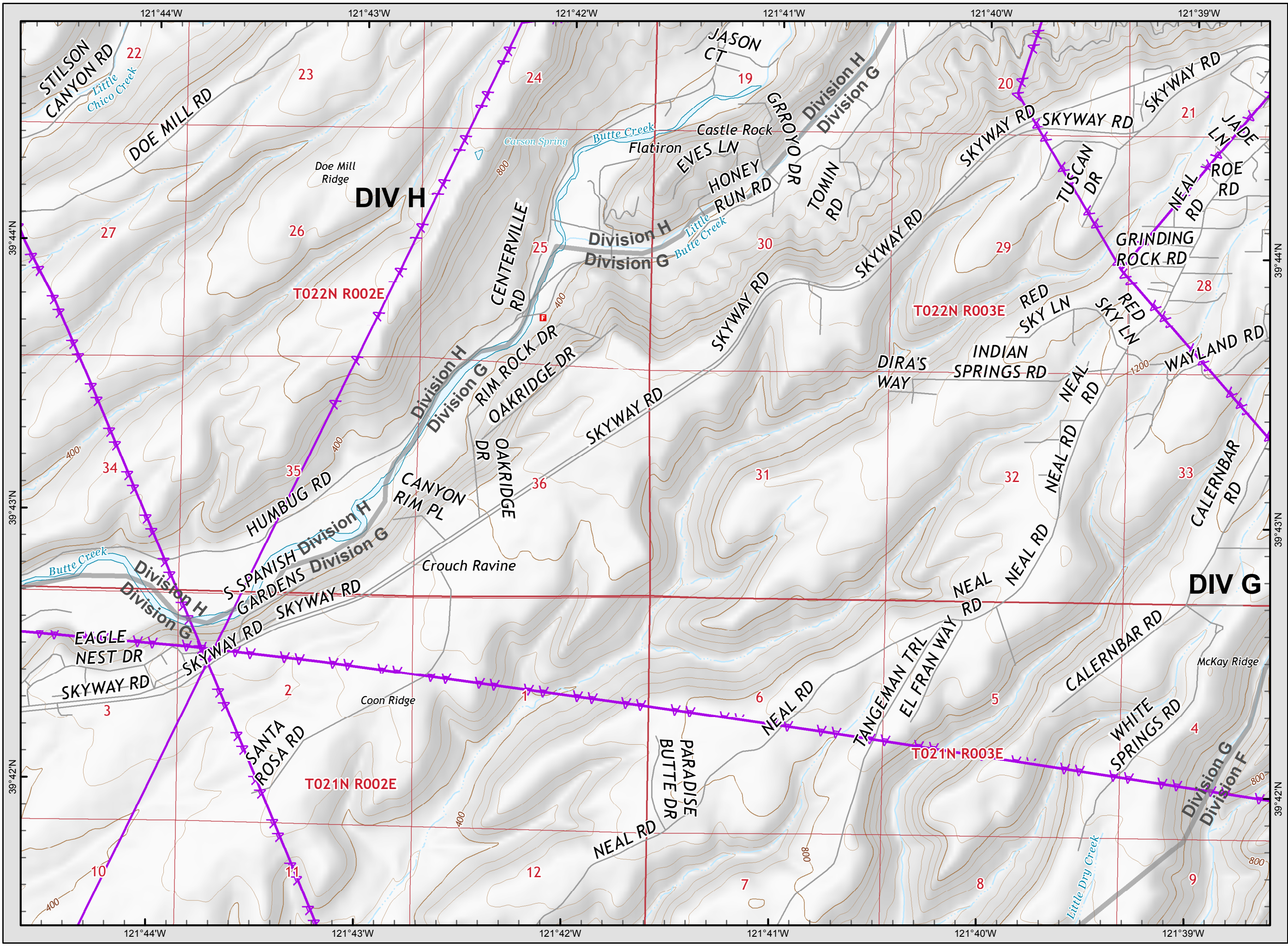
Branch II
Page 1



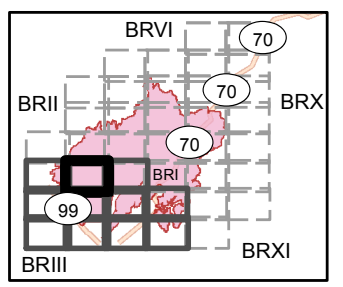
Legend

- () Division
- || Branch
- Completed Line
- Uncontrolled Fire Edge
- XXXXX Completed Dozer Line
- X • Proposed Dozer Line
- H - Completed Hand Line
- R - Road as Completed Line
- AA Transmission Lines
- Drop Point
- ♂ Spot Fire
- Helispot
- ⊙ Staging Area
- Retardant/Mud Pit
- Highway 162
- Comms Towers
- U Unimproved Landing Area



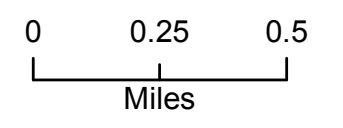


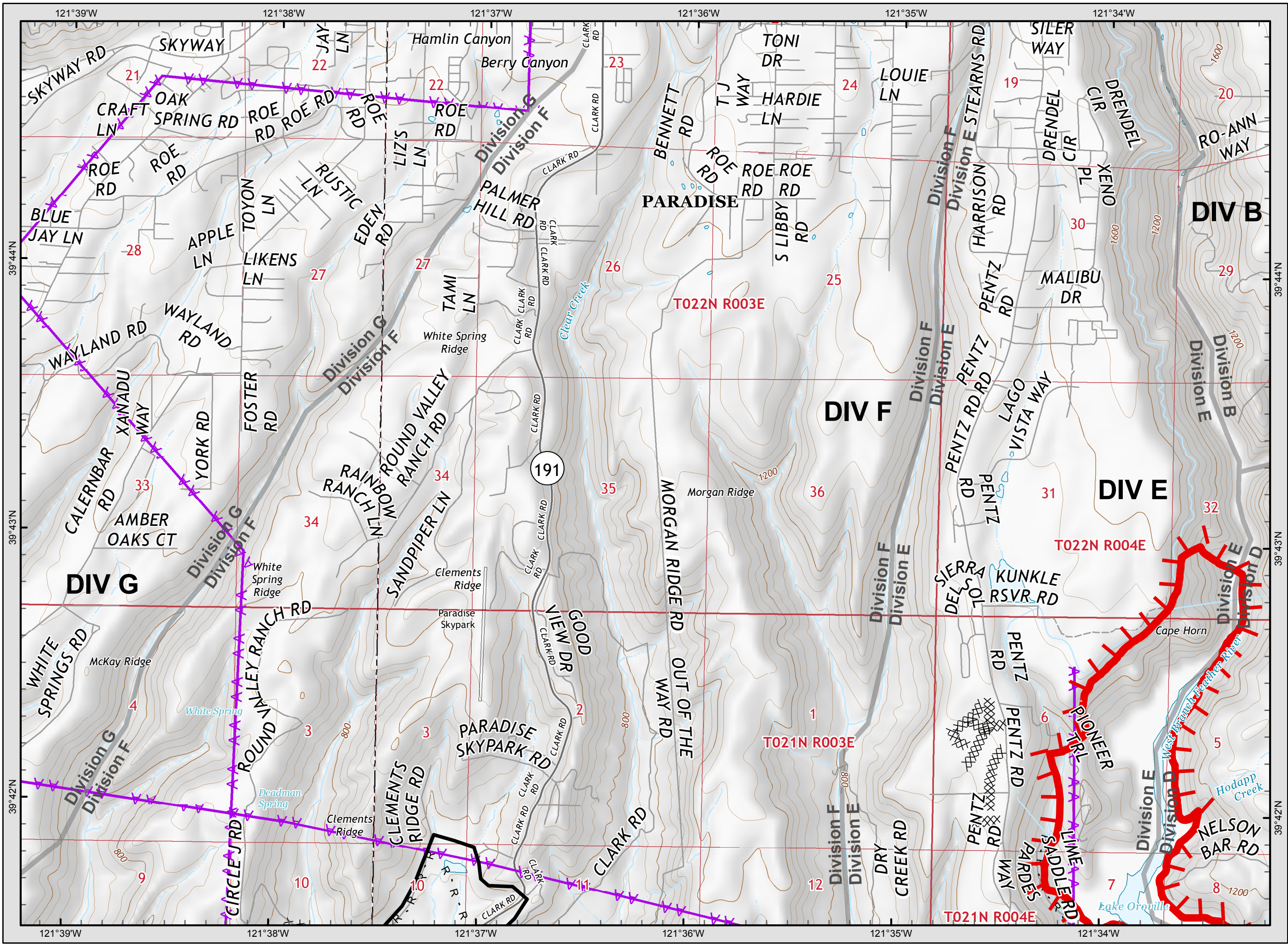
Camp Incident
CA-BTU-016737
November 14, 2018
IAP Map
Branch II
Page 2



Legend

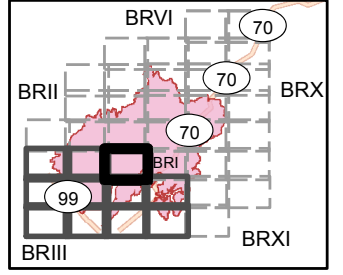
- () Division
- [] Branch
- Completed Line
- Uncontrolled Fire Edge
- XXXXX Completed Dozer Line
- X • Proposed Dozer Line
- H - Completed Hand Line
- R - Road as Completed Line
- Transmission Lines
- Drop Point
- ♂ Spot Fire
- Helispot
- ⊙ Staging Area
- Retardant/Mud Pit
- Highway 162
- Comms Towers
- U Unimproved Landing Area





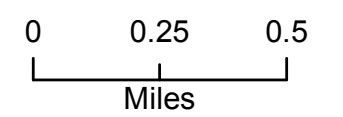
Camp Incident
CA-BTU-016737
November 14, 2018
IAP Map

Branch II
Page 3



Legend

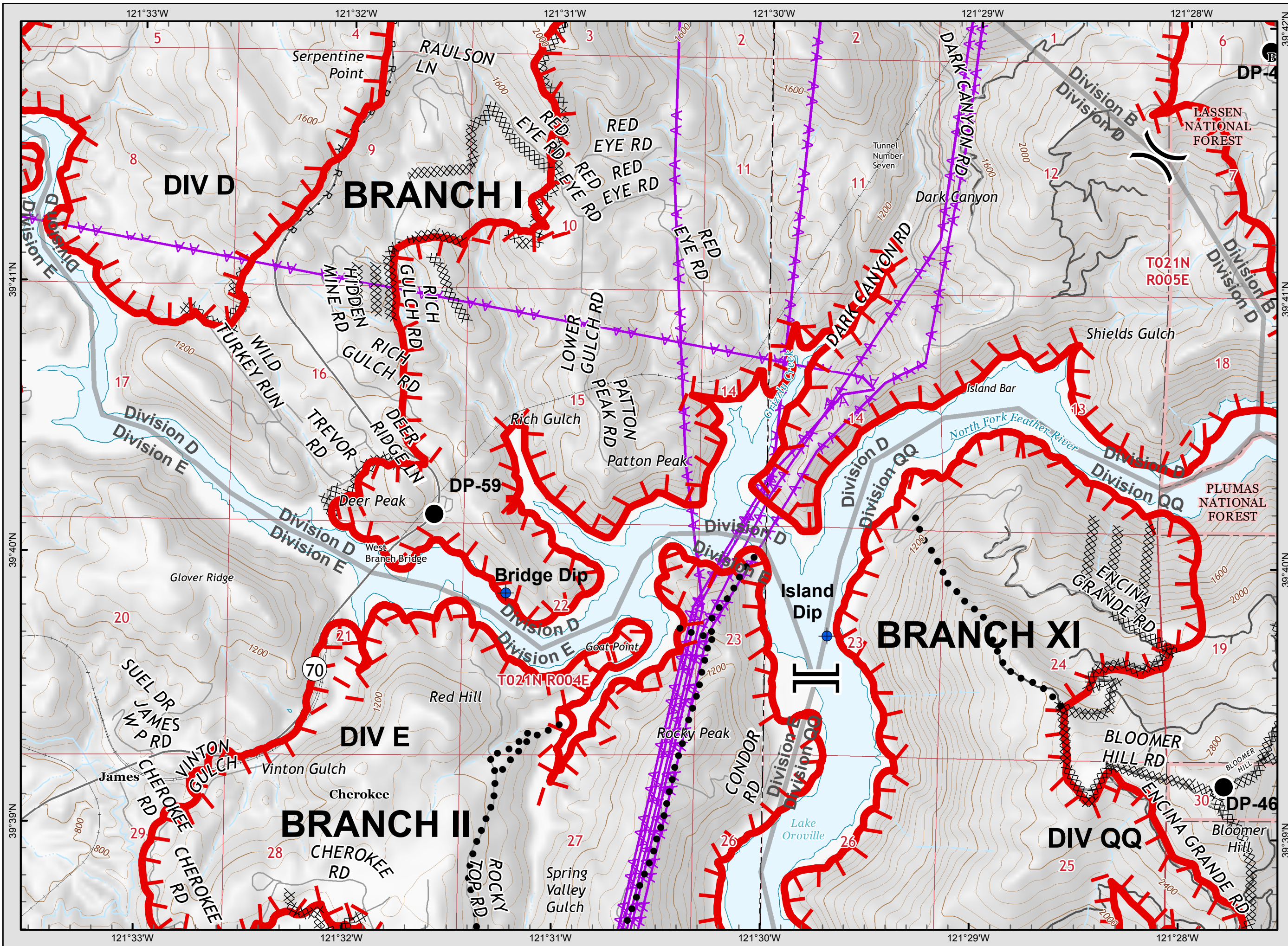
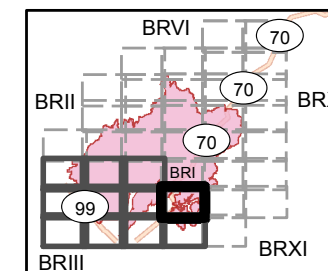
- Division
- Branch
- Completed Line
- Uncontrolled Fire Edge
- Completed Dozer Line
- Proposed Dozer Line
- Completed Hand Line
- Road as Completed Line
- Transmission Lines
- Drop Point
- Spot Fire
- Helispot
- Staging Area
- Retardant/Mud Pit
- Highway 162
- Comms Towers
- Unimproved Landing Area



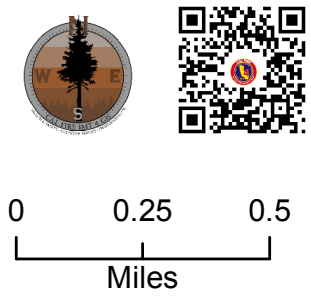


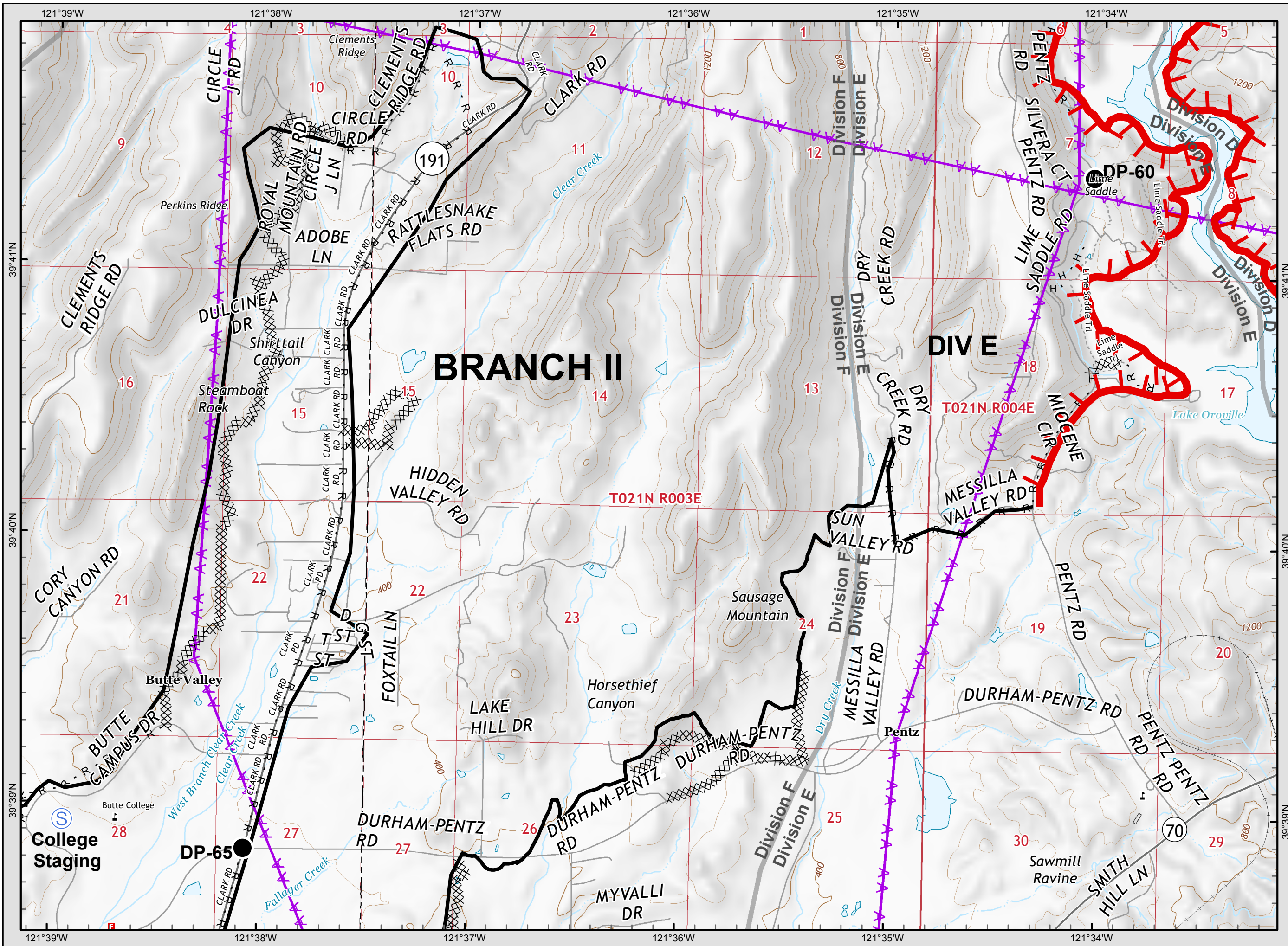
Camp Incident CA-BTU-016737 November 14, 2018 IAP Map

Branch II Page 4



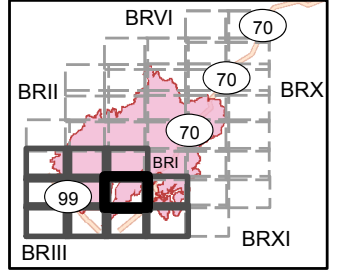
- ### Legend
- () Division
 - [] Branch
 - Completed Line
 - ┌ Uncontrolled Fire Edge
 - XXXXX Completed Dozer Line
 - X • Proposed Dozer Line
 - H - Completed Hand Line
 - R - Road as Completed Line
 - AA Transmission Lines
 - Drop Point
 - ♂ Spot Fire
 - Helispot
 - ⊙ Staging Area
 - ⊕ Retardant/Mud Pit
 - 162 Highway 162
 - 📡 Comms Towers
 - U Unimproved Landing Area





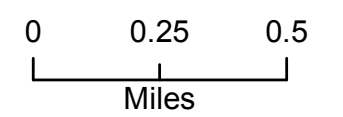
Camp Incident
 CA-BTU-016737
 November 14, 2018
 IAP Map

Branch II
 Page 5



Legend

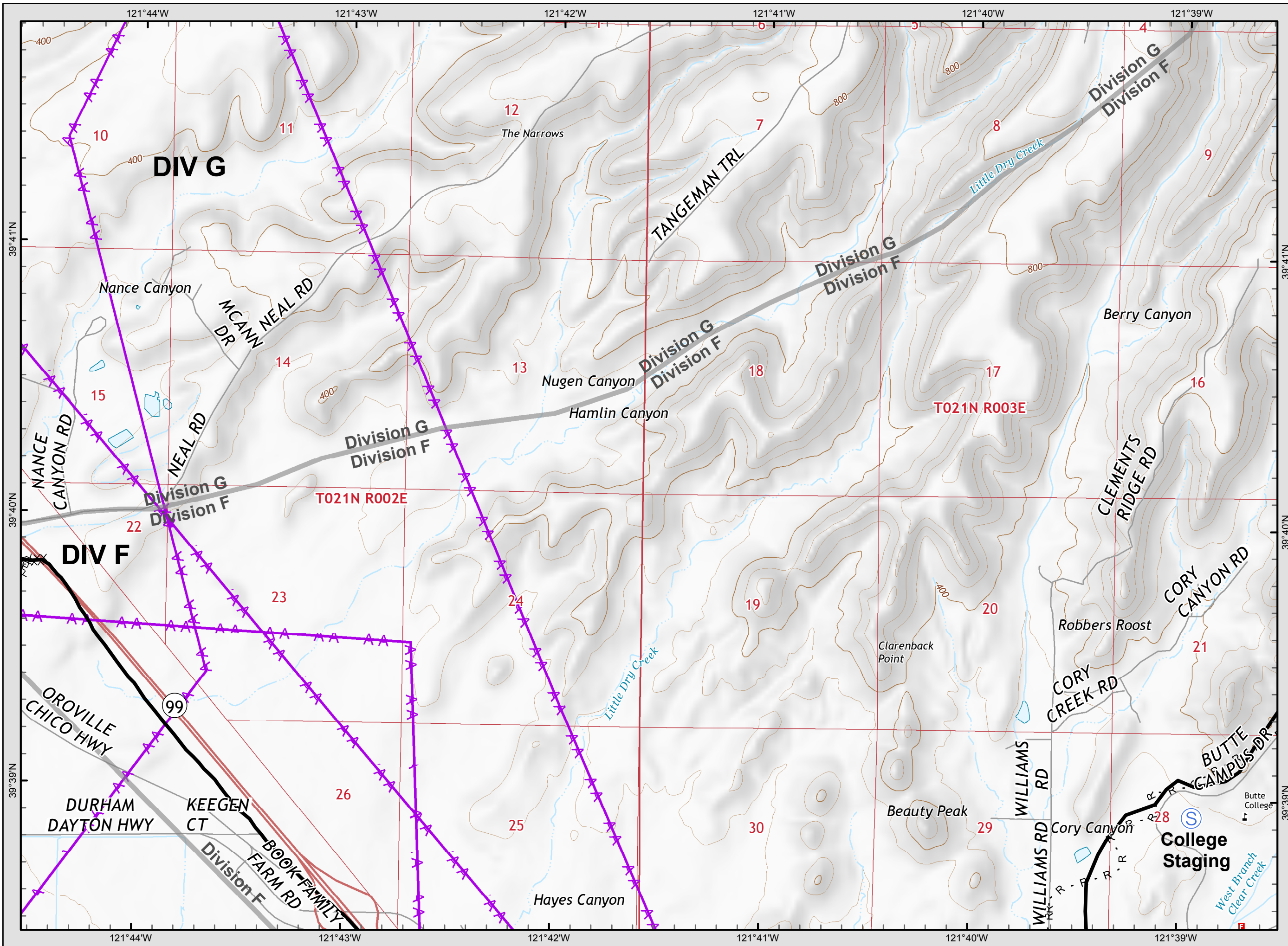
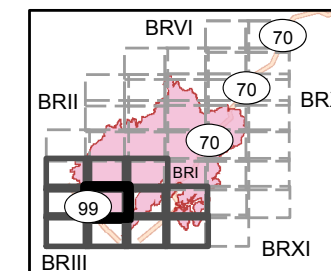
- () Division
- [] Branch
- Completed Line
- Uncontrolled Fire Edge
- XXXXX Completed Dozer Line
- X • Proposed Dozer Line
- H - Completed Hand Line
- R - Road as Completed Line
- Transmission Lines
- Drop Point
- ♂ Spot Fire
- Helispot
- ⊙ Staging Area
- Retardant/Mud Pit
- Highway 162
- Comms Towers
- U Unimproved Landing Area





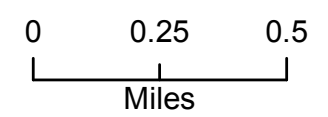
Camp Incident
CA-BTU-016737
November 14, 2018
IAP Map

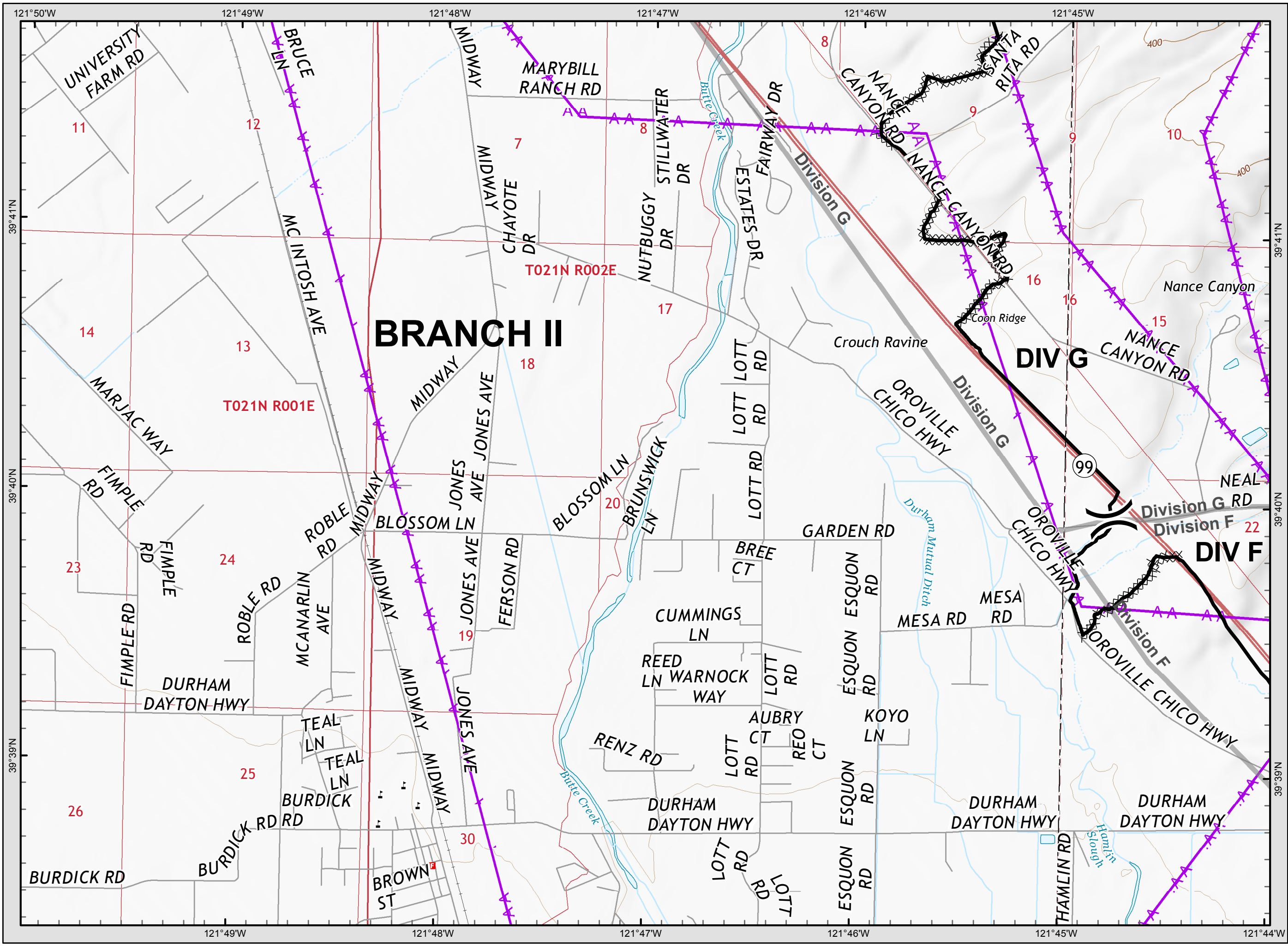
Branch II
Page 6



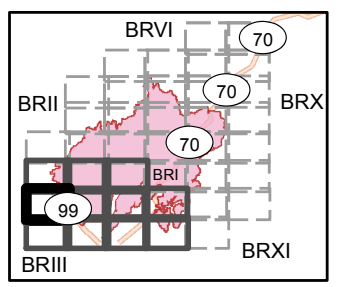
Legend

- () Division
- [] Branch
- Completed Line
- Uncontrolled Fire Edge
- XXXXX Completed Dozer Line
- X • Proposed Dozer Line
- H - Completed Hand Line
- R - Road as Completed Line
- Transmission Lines
- Drop Point
- ♂ Spot Fire
- Helispot
- ⊙ Staging Area
- Retardant/Mud Pit
- Highway 162
- Comms Towers
- U Unimproved Landing Area



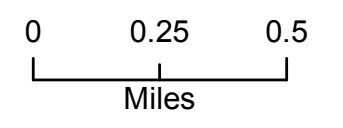


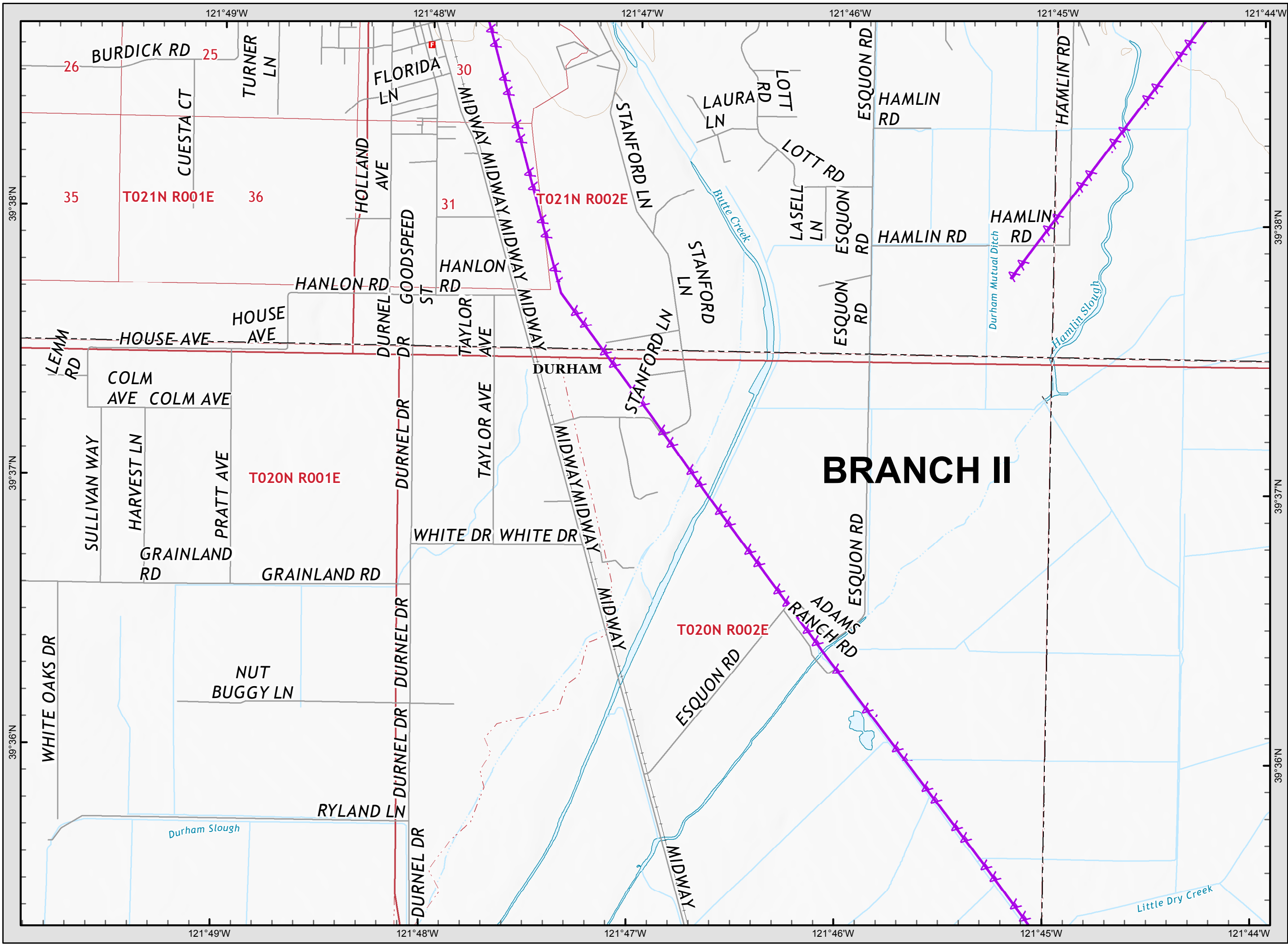
Camp Incident
CA-BTU-016737
November 14, 2018
IAP Map
Branch II
Page 7



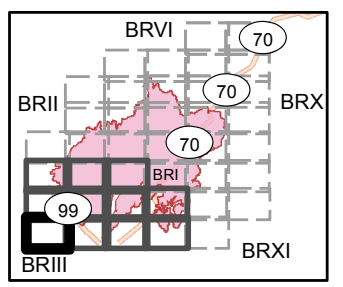
Legend

- () Division
- [] Branch
- Completed Line
- Uncontrolled Fire Edge
- XXXXX Completed Dozer Line
- X • Proposed Dozer Line
- H - Completed Hand Line
- R - Road as Completed Line
- AA Transmission Lines
- Drop Point
- ♂ Spot Fire
- Helispot
- ⊙ Staging Area
- Retardant/Mud Pit
- Highway 162
- Comms Towers
- U Unimproved Landing Area



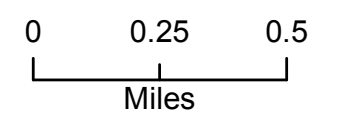


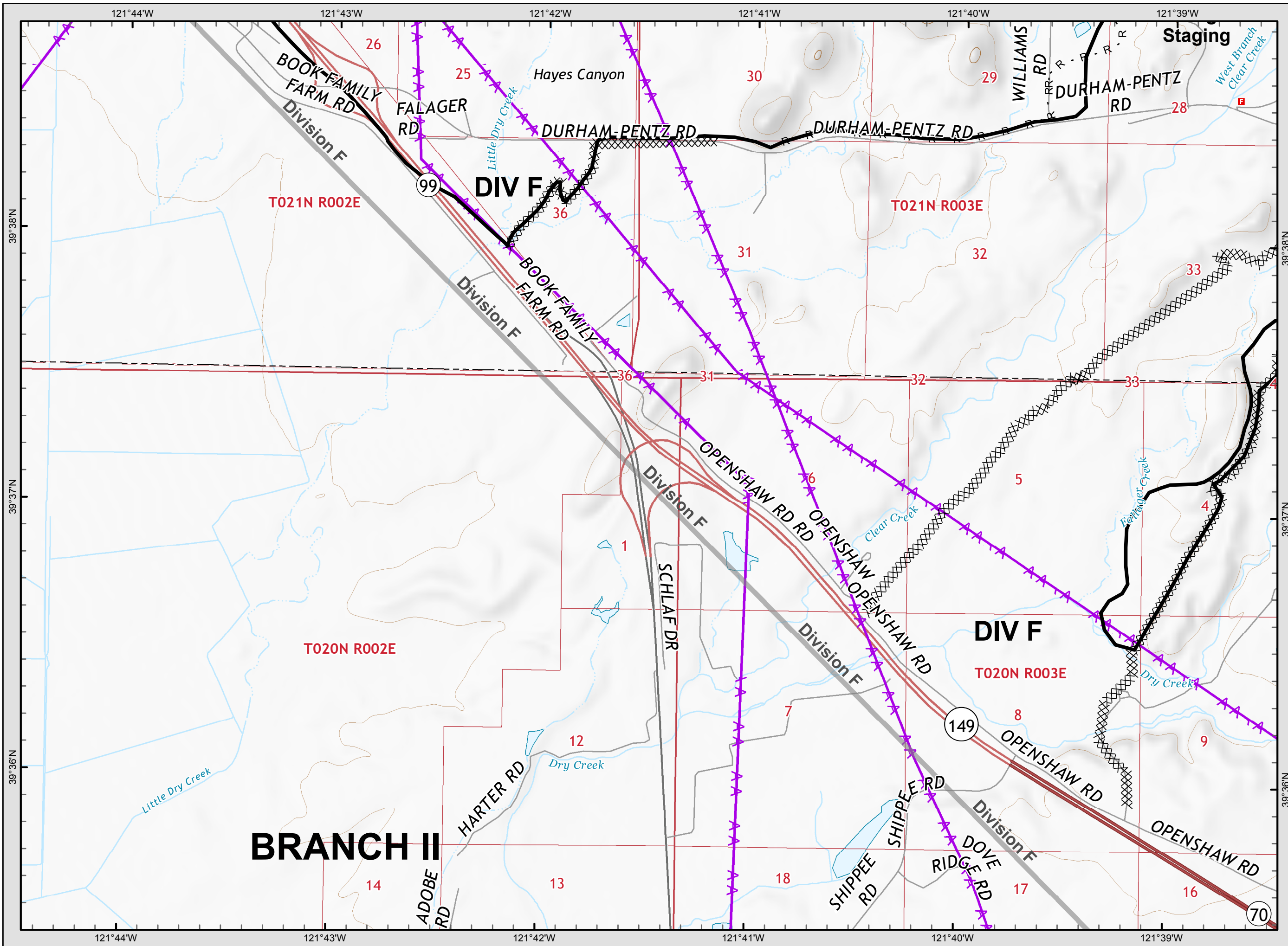
Camp Incident
CA-BTU-016737
November 14, 2018
IAP Map
Branch II
Page 8



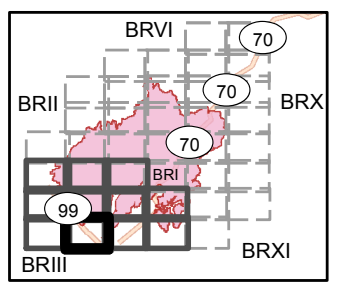
Legend

- () Division
- [] Branch
- Completed Line
- Uncontrolled Fire Edge
- XXXXX Completed Dozer Line
- X • Proposed Dozer Line
- H - Completed Hand Line
- R - Road as Completed Line
- AA Transmission Lines
- Drop Point
- ♂ Spot Fire
- Helispot
- ⊙ Staging Area
- 🪣 Retardant/Mud Pit
- 🛣 Highway 162
- 📡 Comms Towers
- U Unimproved Landing Area



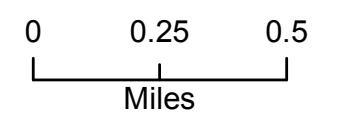


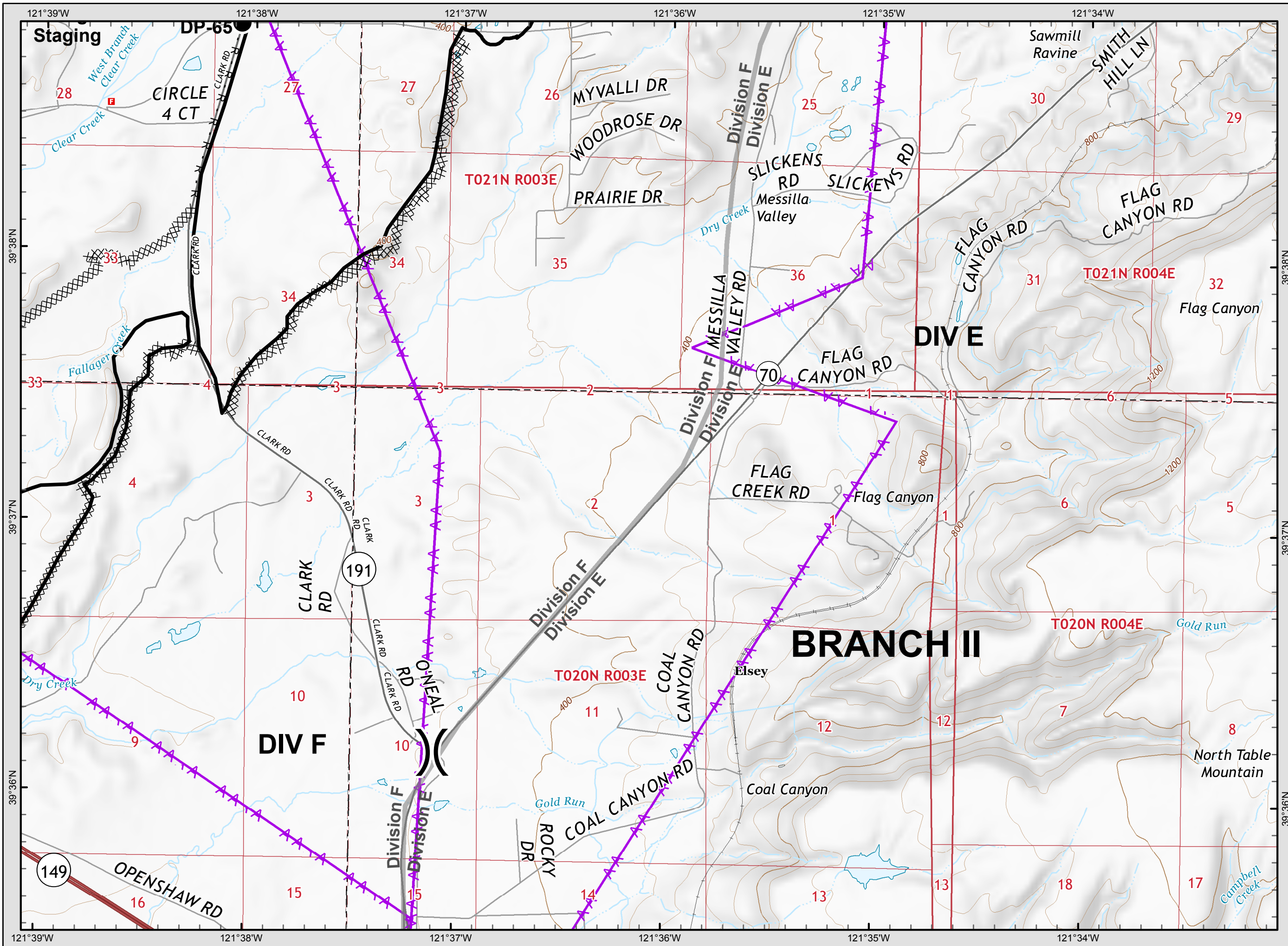
Camp Incident
CA-BTU-016737
November 14, 2018
IAP Map
Branch II
Page 9



Legend

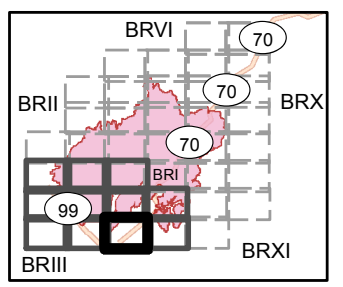
- () Division
- [] Branch
- Completed Line
- Uncontrolled Fire Edge
- XXXXX Completed Dozer Line
- X • Proposed Dozer Line
- H - Completed Hand Line
- R - Road as Completed Line
- AA Transmission Lines
- Drop Point
- ♂ Spot Fire
- Helispot
- ⊙ Staging Area
- Retardant/Mud Pit
- Highway 162
- Comms Towers
- U Unimproved Landing Area





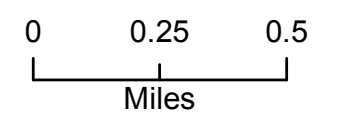
Camp Incident
 CA-BTU-016737
 November 14, 2018
 IAP Map

Branch II
 Page 10



Legend

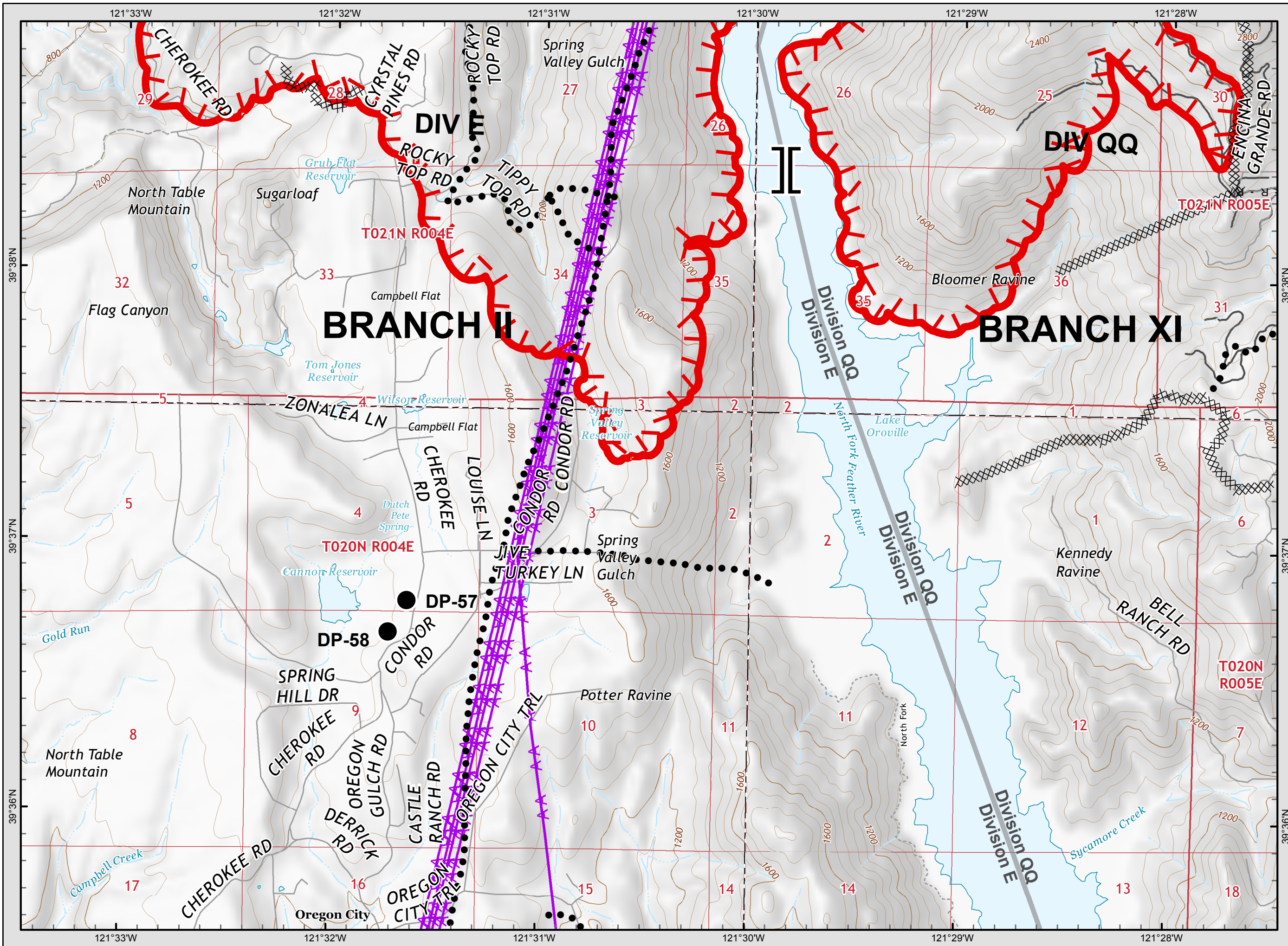
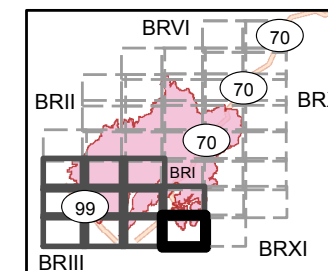
- () Division
- [] Branch
- Completed Line
- Uncontrolled Fire Edge
- XXXXX Completed Dozer Line
- X • Proposed Dozer Line
- H - Completed Hand Line
- R - Road as Completed Line
- AA Transmission Lines
- Drop Point
- ♂ Spot Fire
- Helispot
- ⊙ Staging Area
- Retardant/Mud Pit
- Highway 162
- Comms Towers
- U Unimproved Landing Area





Camp Incident
 CA-BTU-016737
 November 14, 2018
 IAP Map

Branch II
 Page 11



Legend

- () Division
- [] Branch
- Completed Line
- Uncontrolled Fire Edge
- XXXXX Completed Dozer Line
- X • Proposed Dozer Line
- H - Completed Hand Line
- R - Road as Completed Line
- AA Transmission Lines
- Drop Point
- ♂ Spot Fire
- Helispot
- ⊙ Staging Area
- Retardant/Mud Pit
- Highway 162
- Comms Towers
- U Unimproved Landing Area

0 0.25 0.5
Miles