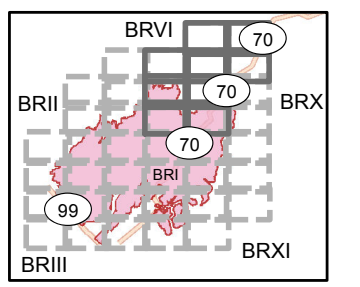


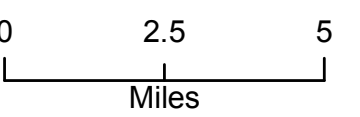
Camp Incident
CA-BTU-016737
November 22, 2018
IAP Map

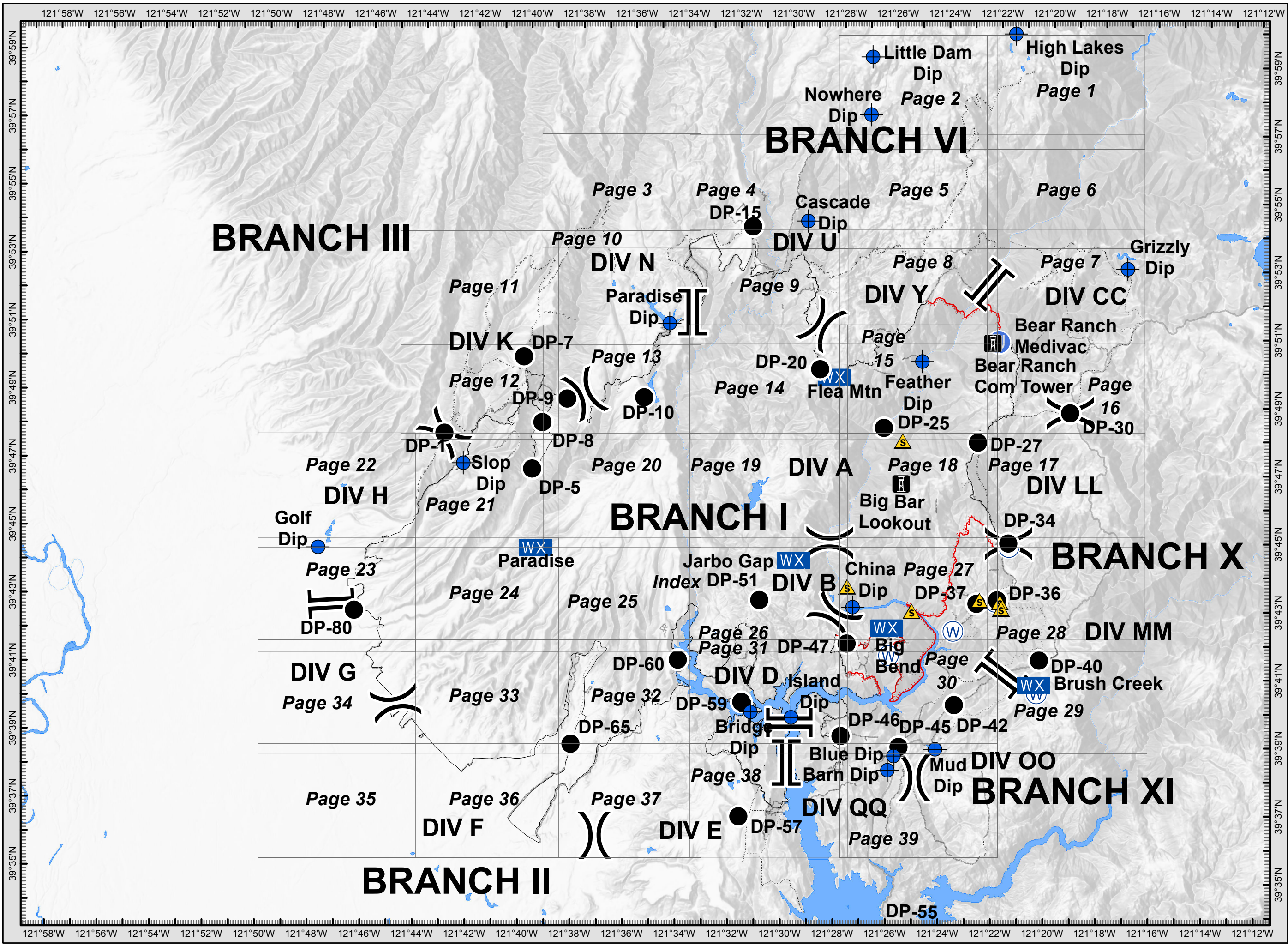
Branch VI
Index



Legend

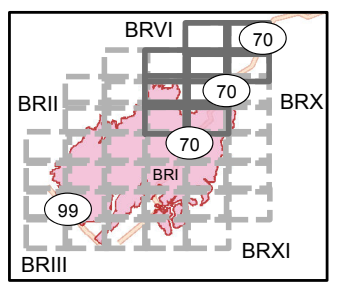
- Division
- Branch
- Completed Line
- Uncontrolled Fire Edge
- Completed Dozer Line
- Proposed Dozer Line
- Completed Hand Line
- Road as Completed Line
- Transmission Lines
- Drop Point
- Spot Fire
- Helispot
- Retardant/Mud Pit
- Highway 162
- Comms Towers
- Unimproved Landing Area
- Safety Zone



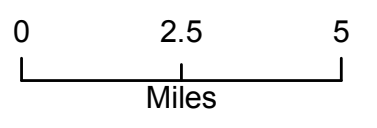


Camp Incident
CA-BTU-016737
November 22, 2018
IAP Map

All Branches
Index



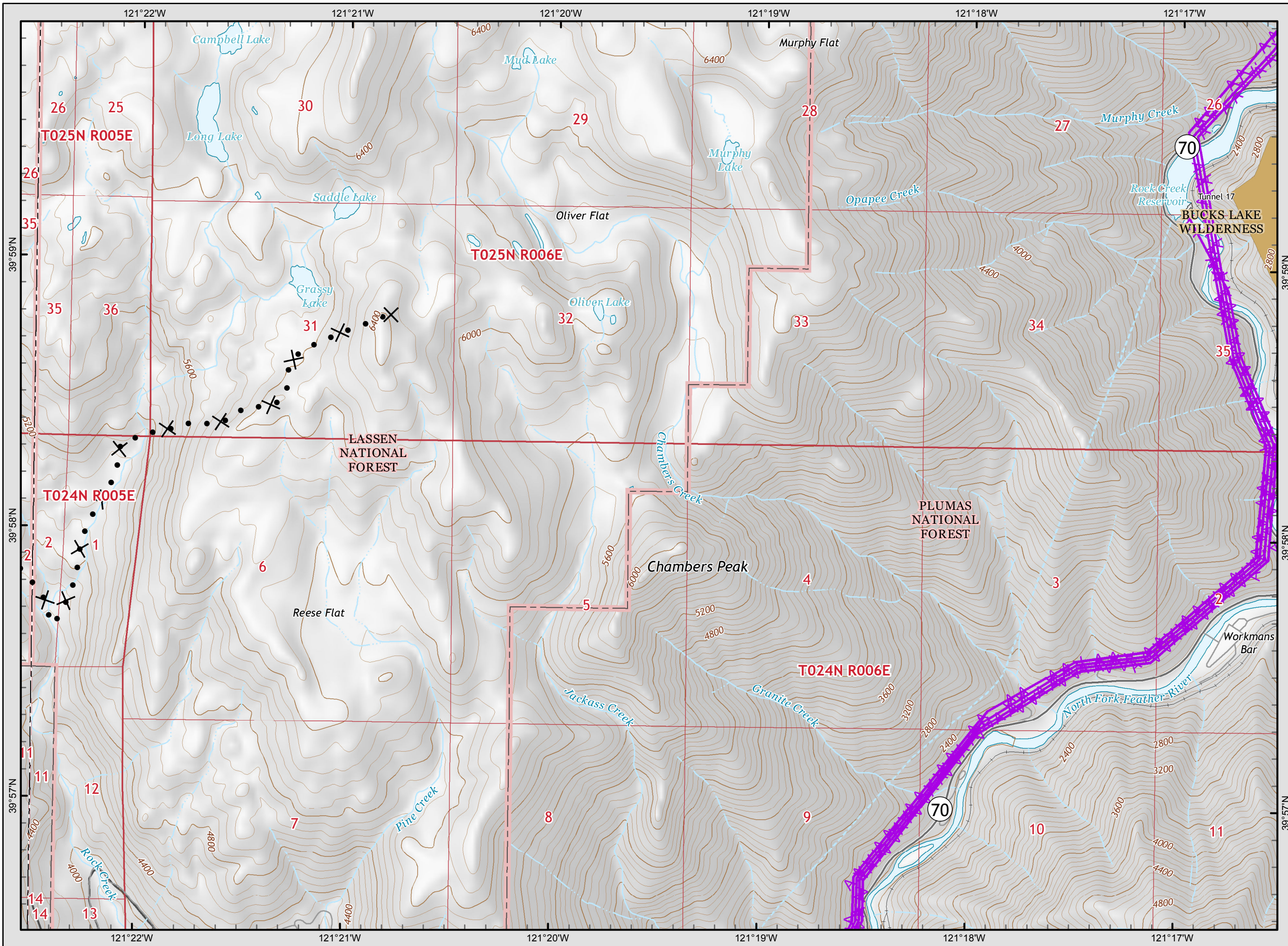
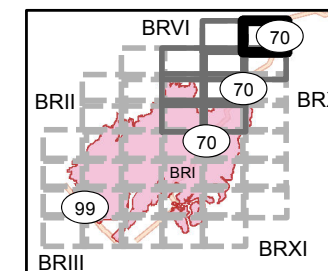
- Legend**
- () Division
 - [] Branch
 - Completed Line
 - Uncontrolled Fire Edge
 - XXXXX Completed Dozer Line
 - X • Proposed Dozer Line
 - H - Completed Hand Line
 - R - Road as Completed Line
 - AA Transmission Lines
 - Drop Point
 - ♂ Spot Fire
 - Helispot
 - Retardant/Mud Pit
 - Highway 162
 - Comms Towers
 - U Unimproved Landing Area
 - ▲ Safety Zone





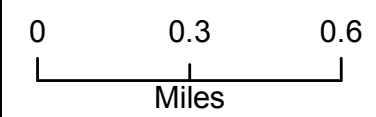
Camp Incident
CA-BTU-016737
November 22, 2018
IAP Map

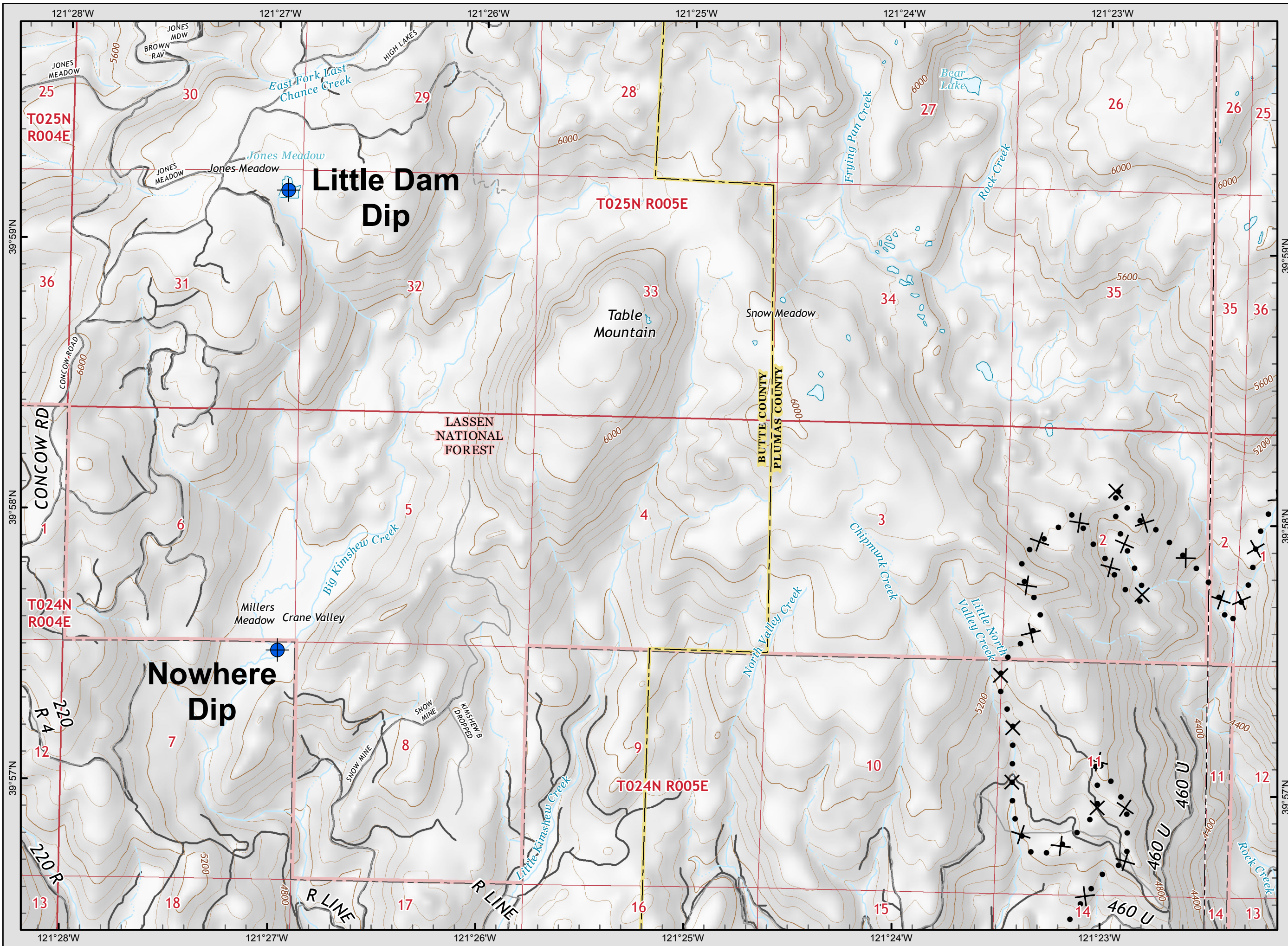
Branch VI
Page 1



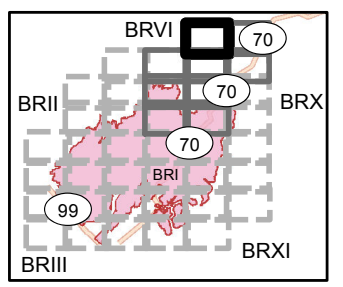
Legend

- Division
- Branch
- Completed Line
- Uncontrolled Fire Edge
- Completed Dozer Line
- Proposed Dozer Line
- Completed Hand Line
- Road as Completed Line
- Transmission Lines
- Drop Point
- Spot Fire
- Helispot
- Retardant/Mud Pit
- Highway 162
- Comms Towers
- Unimproved Landing Area
- Safety Zone



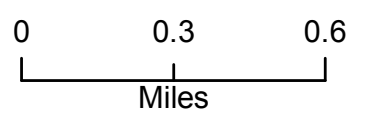


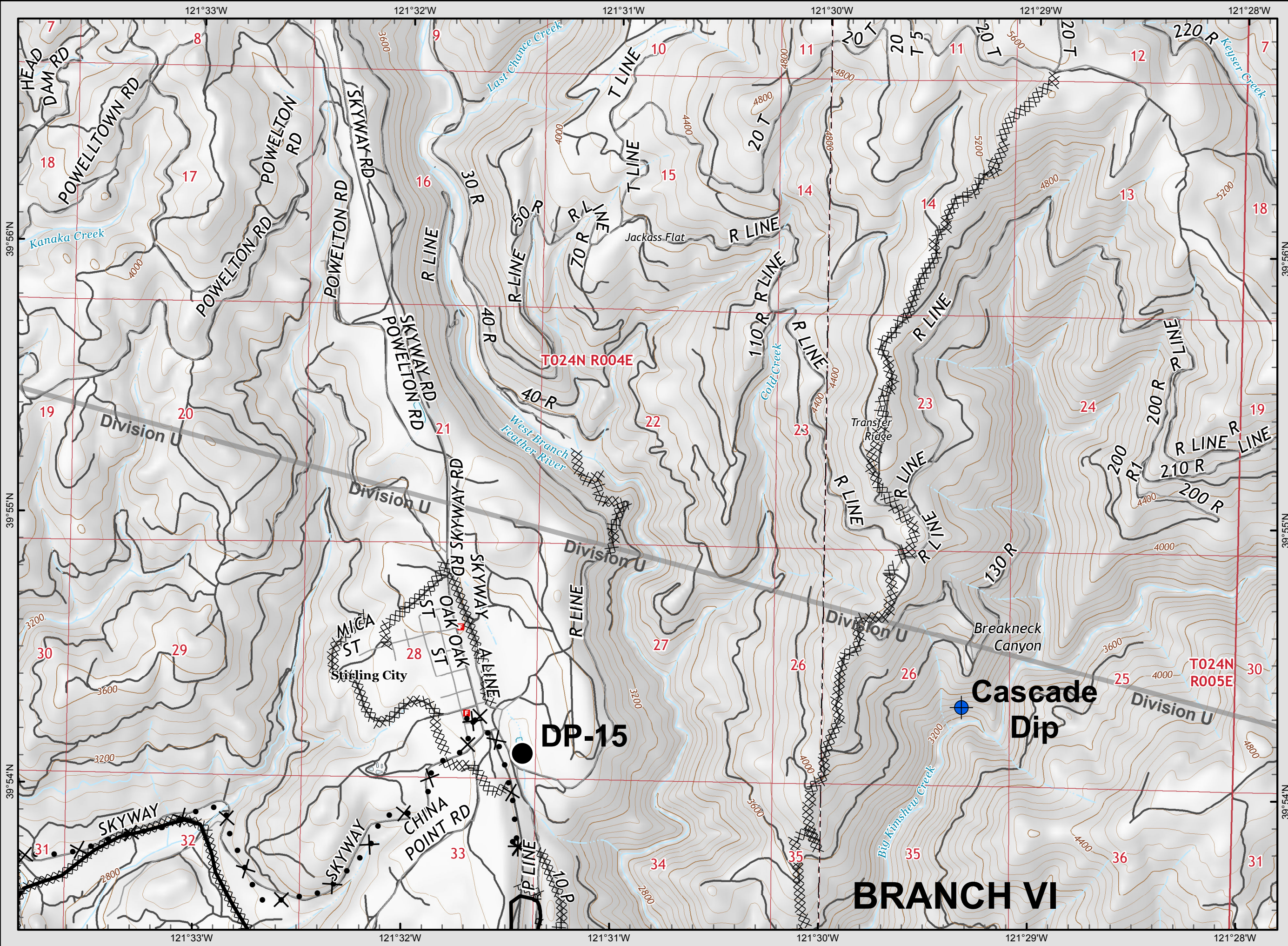
Camp Incident
CA-BTU-016737
November 22, 2018
IAP Map
Branch VI
Page 2



Legend

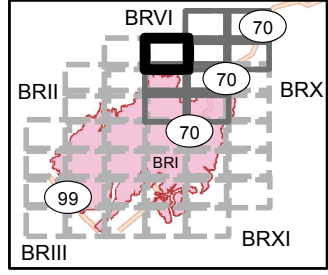
- Division
- Branch
- Completed Line
- Uncontrolled Fire Edge
- Completed Dozer Line
- Proposed Dozer Line
- Completed Hand Line
- Road as Completed Line
- Transmission Lines
- Drop Point
- Spot Fire
- Helispot
- Retardant/Mud Pit
- Highway 162
- Comms Towers
- Unimproved Landing Area
- Safety Zone





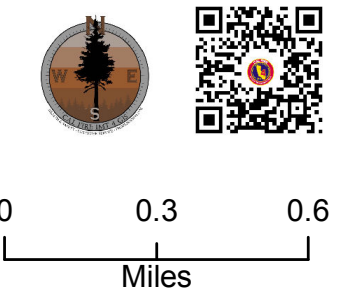
Camp Incident
CA-BTU-016737
November 22, 2018
IAP Map

Branch VI
Page 4



Legend

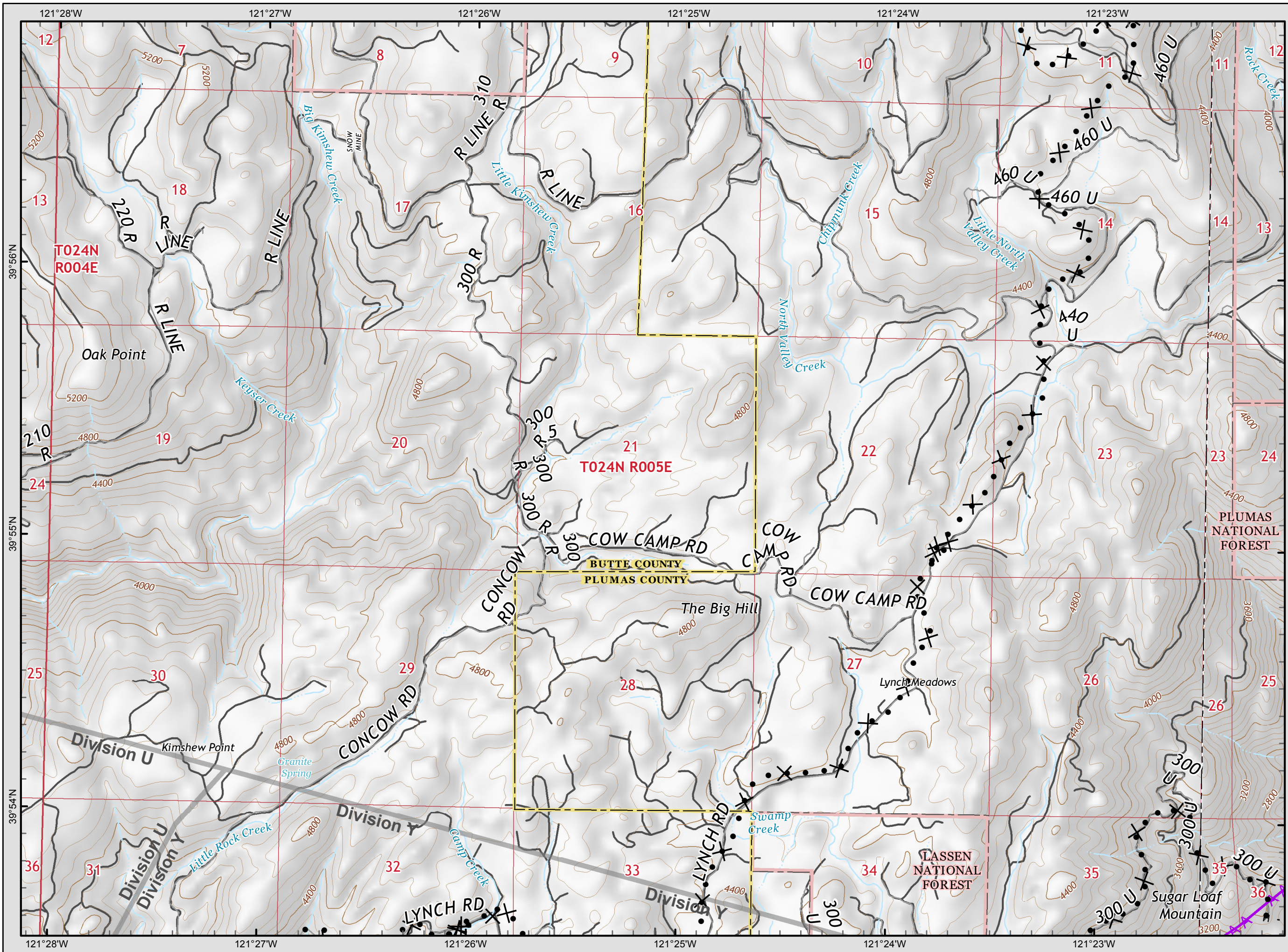
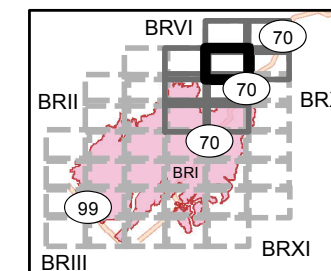
- () Division
- [] Branch
- Completed Line
- Uncontrolled Fire Edge
- XXXXX Completed Dozer Line
- X • Proposed Dozer Line
- H - Completed Hand Line
- R - Road as Completed Line
- AA Transmission Lines
- Drop Point
- ♂ Spot Fire
- Helispot
- Retardant/Mud Pit
- Highway 162
- Comms Towers
- U Unimproved Landing Area
- ▲ Safety Zone





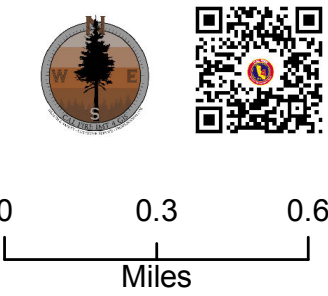
Camp Incident CA-BTU-016737 November 22, 2018 IAP Map

Branch VI Page 5



Legend

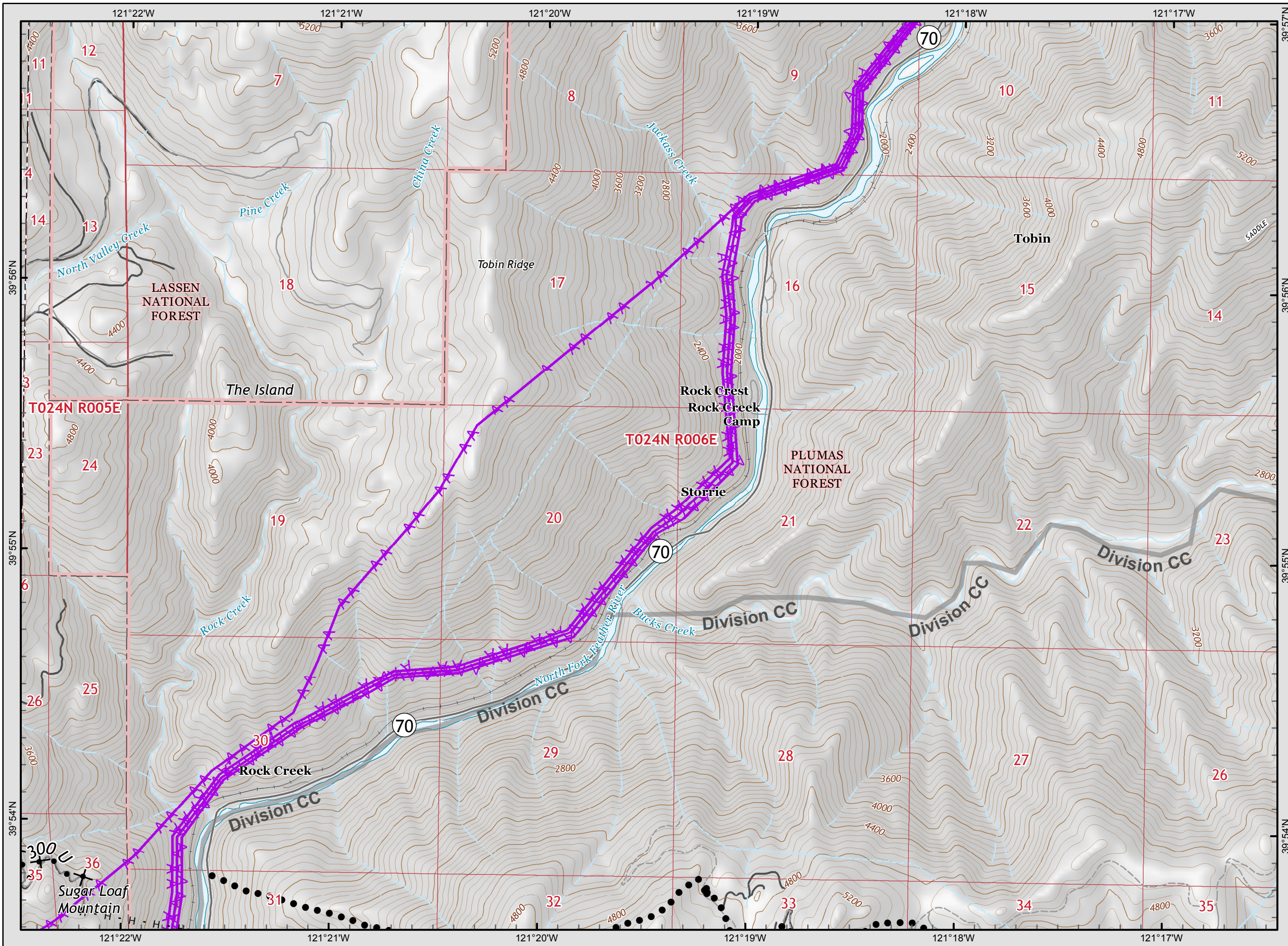
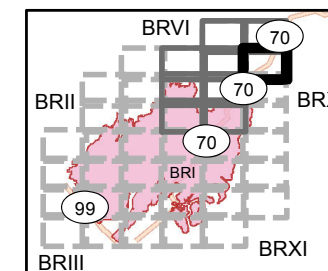
- () Division
- [] Branch
- Completed Line
- Uncontrolled Fire Edge
- XXXXX Completed Dozer Line
- X • Proposed Dozer Line
- H - Completed Hand Line
- R - Road as Completed Line
- Transmission Lines
- Drop Point
- ♂ Spot Fire
- Helispot
- Retardant/Mud Pit
- Highway 162
- Comms Towers
- U Unimproved Landing Area
- ⚠ Safety Zone





Camp Incident
CA-BTU-016737
November 22, 2018
IAP Map

Branch VI
Page 6



Legend

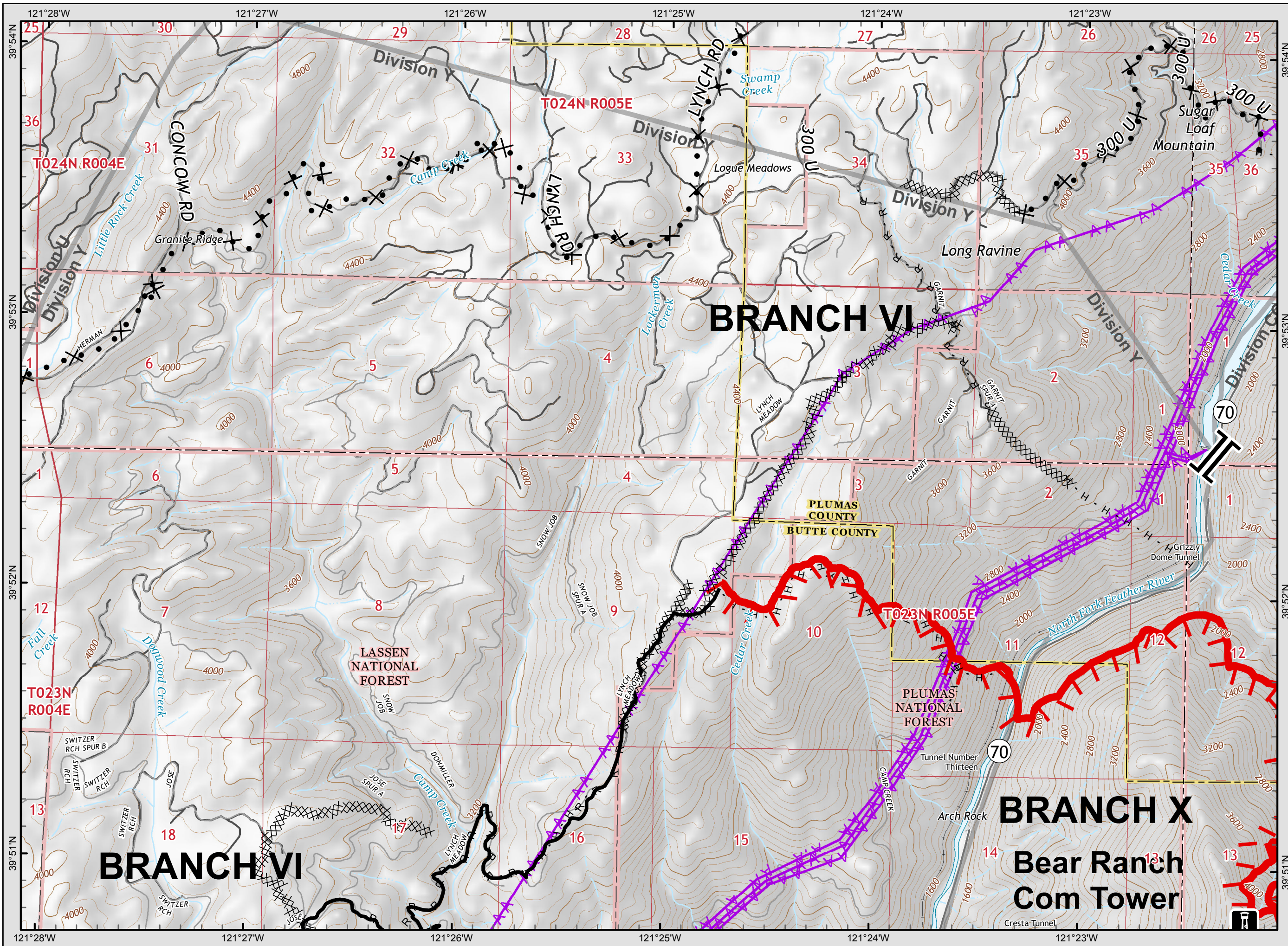
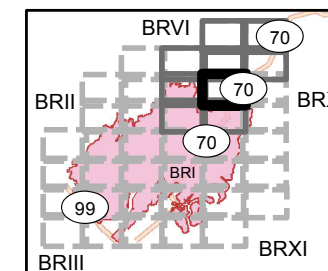
- () Division
- [] Branch
- Completed Line
- Uncontrolled Fire Edge
- XXXXX Completed Dozer Line
- X • Proposed Dozer Line
- H - Completed Hand Line
- R - Road as Completed Line
- AA Transmission Lines
- Drop Point
- ♂ Spot Fire
- Helispot
- Retardant/Mud Pit
- Highway 162
- Comms Towers
- U Unimproved Landing Area
- ▲ Safety Zone

0 0.3 0.6
Miles



Camp Incident
CA-BTU-016737
November 22, 2018
IAP Map

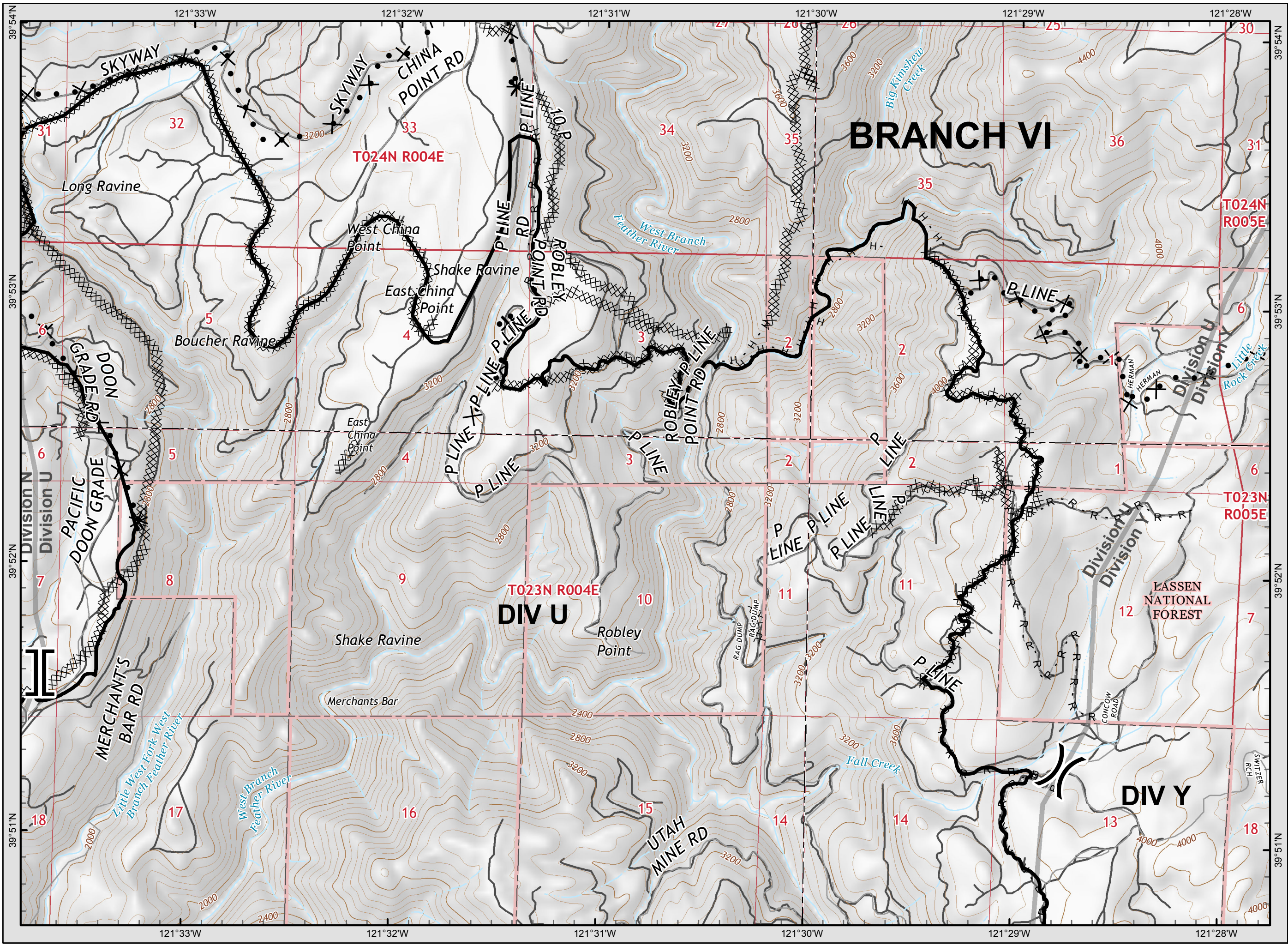
Branch VI
Page 8



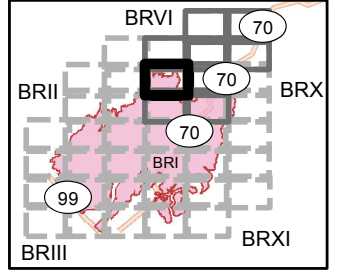
Legend

- () Division
- [] Branch
- Completed Line
- Uncontrolled Fire Edge
- XXXXX Completed Dozer Line
- X • Proposed Dozer Line
- H - Completed Hand Line
- R - Road as Completed Line
- AA Transmission Lines
- Drop Point
- ♂ Spot Fire
- ♀ Helispot
- Retardant/Mud Pit
- Highway 162
- Comms Towers
- U Unimproved Landing Area
- ⚠ Safety Zone

0 0.3 0.6
Miles

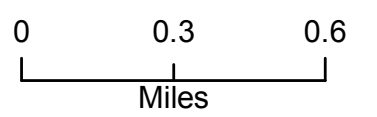


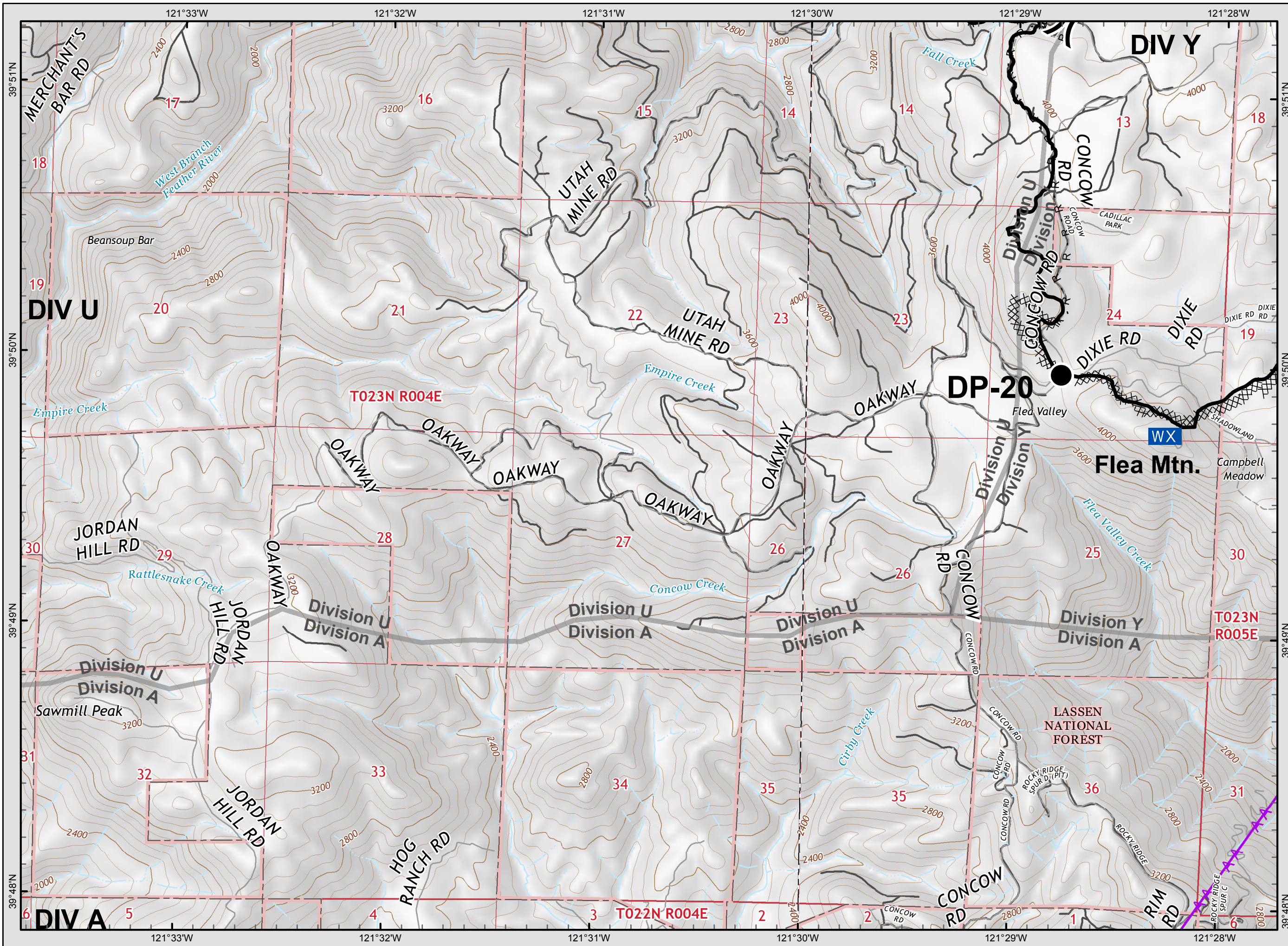
Camp Incident
CA-BTU-016737
November 22, 2018
IAP Map
Branch VI
Page 9



Legend

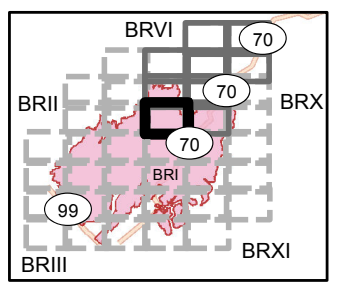
- Division
- Branch
- Completed Line
- Uncontrolled Fire Edge
- Completed Dozer Line
- Proposed Dozer Line
- Completed Hand Line
- Road as Completed Line
- Transmission Lines
- Drop Point
- Spot Fire
- Helispot
- Retardant/Mud Pit
- Highway 162
- Comms Towers
- Unimproved Landing Area
- Safety Zone





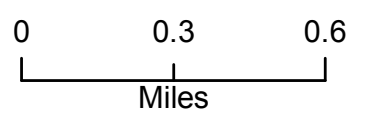
Camp Incident
CA-BTU-016737
November 22, 2018
IAP Map

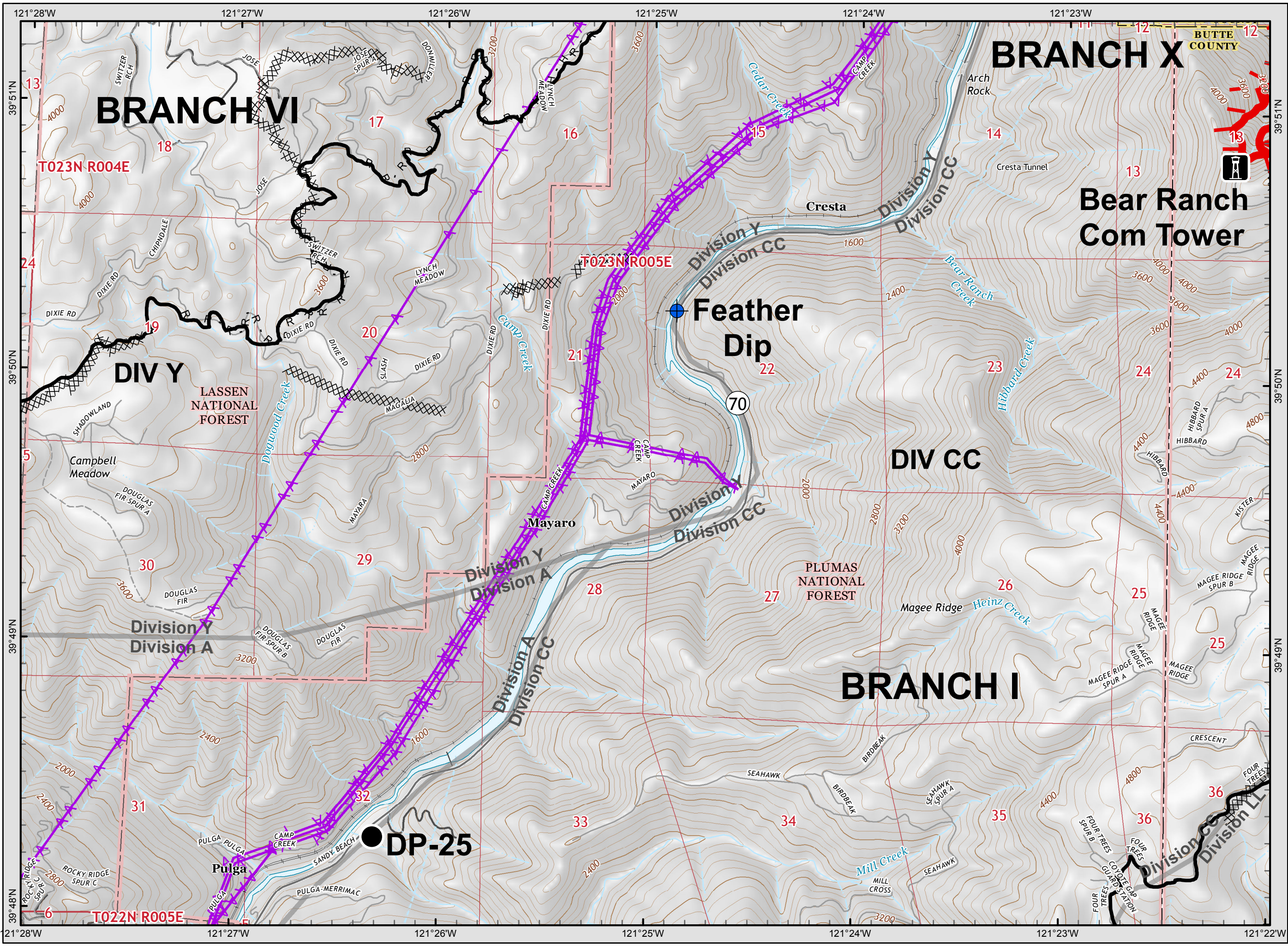
Branch VI
Page 14



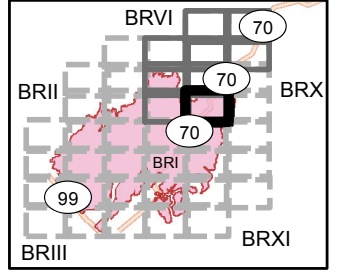
Legend

- () Division
- [] Branch
- Completed Line
- Uncontrolled Fire Edge
- XXXXX Completed Dozer Line
- X • Proposed Dozer Line
- H - Completed Hand Line
- R - Road as Completed Line
- AA Transmission Lines
- Drop Point
- ♂ Spot Fire
- Helispot
- ☒ Retardant/Mud Pit
- Highway 162
- 📡 Comms Towers
- U Unimproved Landing Area
- ⚠ Safety Zone





Camp Incident
 CA-BTU-016737
 November 22, 2018
 IAP Map
Branch VI
 Page 15



Legend

- () Division
- [] Branch
- Completed Line
- Uncontrolled Fire Edge
- XXXXX Completed Dozer Line
- X • Proposed Dozer Line
- H - Completed Hand Line
- R - Road as Completed Line
- AA Transmission Lines
- Drop Point
- ♂ Spot Fire
- Helispot
- Retardant/Mud Pit
- Highway 162
- Comms Towers
- U Unimproved Landing Area
- ▲ Safety Zone

