

CORRECTED

Camp Incident

CA-BTU-016737

INCIDENT ACTION PLAN



OPERATIONAL PERIOD

11/10/2018 0700

to

11/11/2018 0700

THE NATIONAL BUREAU OF STANDARDS

DEPARTMENT OF COMMERCE

NATIONAL BUREAU OF STANDARDS




NATIONAL BUREAU OF STANDARDS

DEPARTMENT OF COMMERCE

NATIONAL BUREAU OF STANDARDS

ORGANIZATION ASSIGNMENT LIST (ICS 203)

1. Incident Name: Camp Incident		2. Operational Period: Date From: 11/10/2018		Date To: 11/11/2018	
		Time From: 0700		Time To: 0700	
3. Incident Commander(s) and Command Staff:			7. Operation Section:		
ICUC's	Todd Derum, BSO Derek Bell, PPD Eric Reinbold		Chief	Mark Brown, Josh Bischof (T)	
Deputy	Dave Russell		Deputy	Bill Weiser, Monty Smith (T)	
Safety Officer	Jack Piccinini, Doug Ferro (T)		Night Ops	Mark Higgins	
Information Officer	Steve Kaufmann, Bill Murphy (T)		Staging Area	COLLEGE	Spencer McGlinger
Liaison Officer	Mitch Villapondo		Branch	I	Sam Hicks
			Division/Group	A	Dyer - STEVE SIMONS
			Division/Group	B	Steve Simons JASON DYER
			Division/Group	D	Rick Mason - JEFF EDSON
4. Agency/Organization Representatives					
Agency/Organization	Name		Division/Group		
CHP	Cliff Morrison		Division/Group		
State Parks	Aaron Wright		Branch	II	Brian Noel
OES	Cindi Dunsmoor		Division/Group	E	TBA - BRIAN HAM
SPI	Steve Roberts		Division/Group	F	Paul Lohan (T) PAT PYRUIS
PG&E	Rob Cone		Division/Group	G	IBA - RON McLaughlin
CalOES	Kit Baley		Division/Group		
CCC	Logan Forbes		Division/Group		
Butte Co EOC	Megan Jessee		Branch	III	Shane Lauderdale
Paradies EOC	Colette Curtis		Division/Group	H	Mike Hildebrand
BIA	Greg Perry		Division/Group	K	Shane Galvez
BIA	George Violante		Division/Group	N	Gene Neely / Alan Whisler (T)
			Division/Group		
			Branch	IV	TBA
5. Planning Section			Division/Group	p	TBA
Chief	Chris Burch		Division/Group	Q	TBA
Deputy	Jason Martin		Division/Group	R	TBA
Resource Unit	Coby Dyche, Ron Karfen (T) Brian Torosian (T)		Division/Group		
Situation Unit	Denny O'Neil		Division/Group		
Documentation Unit			Branch	V	TBA
Demobilization Unit	Chris Lynch		Division/Group	S	TBA
GISS	Dan Dresselhaus		Division/Group	T	TBA
FBAN	Tim Chavez, Jonathan Pangburn (T)		Division/Group		
IMET	Alex Hoon		Division/Group		
Training Tech Spec	Dennis Martin		Staging Area		
			Air Operations Branch	Director	
6. Logistics Section			Air Support Grp Sup	Greg Bradshaw, Tim Perkins	
Chief	Matt Reich		Helibase Manager	JC Collins	
Supply Unit	Mathew Brandt				
Facilities Unit	Shawn Burris, Travis Heard		8. Finance/Administration Section		
Ground Support Unit	Conor Stapleton, Mike Esparza		Chief	George Huang	
Ordering	Mike HeyFron		Deputy	Mara Zaver	
Hired Equipment Tech	Tim Bingham		Time Unit	Shane Beck, Greg Tunzi (T)	
Communications Unit	Tom Webb		Procurement Unit	Joe Flagg	
Medical Unit	Darlen Nelson		Comp/Claims Unit	Courtney Forsythe	
Motel Tech Spec	Dawn Muschetto		Cost Unit	Rob Jenkins	
Prepared By: Name:	Chris Burch	Position/Title:	PSC	Signature:	
ICS 203		Date/Time:	11/9/2018 2300 hours		



Fire Weather Forecast



FORECAST NO: 2
PREDICTION FOR: DAY/NIGHT SHIFT
SHIFT DATE: November 10-11, 2018
TIME/DATE ISSUED: November 9, 2018 2000 PDT

NAME OF FIRE: Camp
UNIT: CA-BTU
SIGNED: Alex Hoon
Incident Meteorologist

WEATHER DISCUSSION: ...RED FLAG WARNING 10PM TONIGHT THROUGH MONDAY MORNING...

Light winds are expected during the day today with dry conditions. Poor mixing today will keep poor visibility through the day, especially for the lower elevations of the fire area. Another strong northeast wind event is expected over the next couple days with very dry conditions, poor recovery, and strong winds over the Camp Fire. Northeast winds will increase this evening after 2000, with the peak of the wind even from midnight to around 7am Sunday morning. Lighter winds are expected Saturday afternoon, with increasing northeast winds once again Sunday night. Very dry conditions and poor humidity recovery continues through the weekend and into next week, although with lighter winds.

WEATHER FORECAST FOR SATURDAY: ...LIGHT WINDS DURING THE DAY...POOR MIXING...

WEATHER: Sunny with heavy smoke. Smoke inversion remaining over fire area through the day.

MAX TEMPERATURES: 55-65°F. LITTLE CHANGE

MIN HUMIDITY: 12-17%. UP 5%

20-FOOT WIND:

SLOPE/VALLEY - Northeast 5 to 10 in the morning, then becoming Upslope to 3 to 8 mph in the afternoon.

RIDGETOP- Northeast 10 mph with gusts to 15 mph in the morning, then Becoming West 5-10 mph in the afternoon.

MIXING HEIGHT: 1000 ft AGL in the afternoon.

TRANSPORT WINDS: North 5 mph.

SATURDAY NIGHT: ...CRITICAL DOWNSLOPE WINDS INCREASING AFTER 2000...

WEATHER: Clear with smoke inversion.

MIN TEMPERATURES: 45-50°F. LITTLE CHANGE

MAX HUMIDITY: 15-20% DOWN 10%

20-FOOT WIND:

SLOPE/VALLEY - Calm, then increasing after 2000 to Northeast 15 to 20 mph. Gusts up to 30 mph.

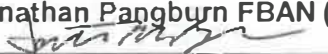
RIDGETOP - West 5-10 mph, then Northeast 20 to 30 mph with gusts to 50 mph after 2000.

EXTENDED FORECAST: ...GUSTY WINDS CONTINUE INTO MONDAY MORNING...

SUNDAY AND MONDAY: Sunny. Max temps...55-65°F. Min RH 6-11%. Northeast 10 to 20 mph. Gusts 30-45 mph into Sunday morning. Lighter winds during the afternoon. Gusts up to 30 mph again Sunday night.

TUESDAY AND WEDNESDAY: Sunny. Max temps...57-67°F. Min RH 10-15%. Light updrainage winds during the afternoon. Northeast 5 to 10 mph overnight and into the morning hours.

FIRE BEHAVIOR FORECAST

FORECAST NUMBER: 2	TYPE OF FIRE: Wildland Fire
FIRE NAME: Camp	OPERATIONAL PERIOD: 24hr 11/10 (0700-0700)
DATE ISSUED: 11/9	TIME ISSUED: 1830
UNIT: BTU	SIGNED: Jonathan Pangburn FBAN (T) 

INPUTS

WEATHER SUMMARY

****Red Flag for Hot and Dry with Increased winds Sat-Mon****
See Weather Forecast in IAP.

OUTPUTS

GENERAL: **Possibility of Wind and Plume Dominated Fire Behavior**

Expect varying windows for direct attack versus indirect, as related to flame lengths and rates of speed, based upon forecast wind and smoke coverage.

In the absence of weather conditions outside the forecast or extreme fire behavior conditions expect:

	Max. Flame Length	Max. Rate of Spread	Spotting	Probability of Ignition
Grass	< 7' (2 m)	75-100 ch/hr (1-2 km/hr)	< 0.5 mile (0.8 km)	68%
Grass/Shrub Mix	< 10' (3 m)	30-50 ch/hr (0.7-1 km/hr)	< 0.5 mile (0.8 km)	68%
Shrub	< 10' (3 m)	30-50 ch/hr (0.7-1 km/hr)	< 0.5 mile (0.8 km)	68%
Timber Litter	< 5' (1.5 m)	7-15 ch/hr (0.1-0.3 km/hr)	< 0.5 mile (0.8 km)	68%
Slash-Blowdown	10-15' (3-5 m)	20-40 ch/hr (0.4-0.8 km/hr)	< 0.5 mile (0.8 km)	68%
WUI/Shrub	15-25' (4-8 m)	80-150 ch/hr (3-4 km/hr)	< 0.5 mile (0.8 km)	68%

****minimum safety zone size for brush fuels is 1/3 acre (0.1 Ha) for a Strike Team of Engines.**

****minimum safety zone size for slash fuels is 1/2 acre (0.2 Ha) for a Strike Team of Engines.**

****minimum safety zone size for WUI/shrub fuels is 1 acre (0.4 Ha) for a Strike Team of Engines.**

SPECIFIC:

In the daytime, expect upslope, updrainage winds, with eddies along ridgelines and curves along drainages. Overnight, expect the NE winds to resurface around midnight, aligning downslope with the Feather River and Butte Creek drainages.

Branch I, VI: Fire will have single tree torching and passive crown fire activity in timber stands with both afternoon and overnight winds, especially in areas of heavier fuels or trees near involved structures.

Branch II, III: Expect rapid rates of spread in grass fuels wherever torching and ember cast is seen.

Areas of tactical advantage (water features, highways), normally utilized as barriers to fire spread, may be compromised with winds via spotting, after midnight.

AIR OPERATIONS:

Anticipate turbulence, gusty winds, and limited visibility with consumption of heavy fuels.

Mixing height: 1,000 ft. AGL, Transport winds: N 5 mph, Sunrise 0645, Sunset 1654.

SAFETY

Be aware of not only the "Fire Environment" you are currently in but also the one you are transitioning into.



SAFETY MESSAGE

CAMP



18-CA-BTU-016737 November 10, 2018

**S
A
F
E
T
Y**

**S
A
F
E
T
Y**

**S
A
F
E
T
Y**

**E
V
E
R
Y
O
N
E
S**

**R
E
S
P
O
N
S
I
B
I
L
I
T
Y**

TREES

TREES ARE THROUGHOUT THE FIRE AREA

Watch Out

- Ground cover has burned loosening the stability of the root system
- Trees have been heavily damaged by extreme fire behavior
- Many operations will be occurring within this hazard area

Mitigation

- Remove the hazard if safe to do so
- Flag and report the hazard to personnel
- Be alert while working and driving in hazard area

ACCOUNTABILITY

ACCIDENTS OFTEN OCCUR DURING TRANSITION

Watch Out

- Proper briefings do not always occur during transition
- Some resources may not be aware of proper radio frequencies
- Supervision may not be able to perform accountability rollcall in emergency situations

Mitigation

- Reconcile all assigned resources during breakouts and once on the line
- Make contact with resources not assigned to you but in your area to ensure they are assigned and have supervision
- Perform thorough briefings to all assigned resources as well as resources from cooperating agencies working in your area

EMOTIONAL FATIGUE

EMOTIONAL FATIGUE CAN IMPACTS US AS MUCH AS PHYCIAL FATIGUE

Watch Out

- Look for general depression
- Look for lack of work production
- Look for signs and symptoms among your fellow workers

Mitigation

- Get as much quality rest as possible
- Eat properly and stay hydrated
- Talk about difficult situations with your peers – seek help



Douglas Michael Ferro
INCIDENT TEAM SAFETY

ASSIGNMENT LIST (ICS 204)

1. Incident Name: Camp Incident		2. Operational Period: Date From: 11/10/18 Date To: 11/11/18 Time From: 0700 Time To: 0700			3. Branch: I Div/Group: A Alpha 2 of 2		
4. Operations Personnel: Operations Section Chief: Mark Brown, Josh Bischof (T) Night Ops: Mark Higgins Branch Director: Sam Hicks Division/Group Supervisor: Dyer STEVE SIMONS							
5. Resources Assigned:		** Resources Below in Bold are 12 Hour **			Reporting Location, Special Equipment, Remarks, Notes, and Information Time Location		
Resource Identifier	Leader	Personnel	Request #				
DOZ PVT E-185 KITE SOL	Will Christensen	2	E-185	0700-0700	CONCOW/HWY 70		
DOZ PVT E-417 ALGERINE WEST 2	Monte West	2	E-417	0700-0700	CONCOW/HWY 70		
WT PVT E-185 KITE SOL	Will Christensen	2	E-185	0700-0700	CONCOW/HWY 70		
WT				0700-0700	CONCOW/HWY 70		
WT				0700-0700	CONCOW/HWY 70		
WT				0700-0700	CONCOW/HWY 70		
WT				0700-0700	CONCOW/HWY 70		
HEQB				0700-0700	CONCOW/HWY 70		
HEQB				0700-0700	CONCOW/HWY 70		
EMPF	Rodrigues	1	O-227	0700-0700	CONCOW/HWY 70		
EMTF	Tucker	1	O-78	0700-0700	CONCOW/HWY 70		
CRW 18 DIAMOND	Krishan Kochar	20	C-18	0700-1900			
C-9A Millerbravo	Aguilar	20	C-90	0700-1900			
6. Work Assignments:							
Scout the Fire for Branch and Division Breaks to validate Control Lines							
Hold and Improve Control Lines to mitigate threat of fire escaping							
Prepare Structure Defense Plan							
Perform Tactical Patrol around structures and prevent potential of new starts							
7. Special Instructions:							
8. Communications (radio and/or phone contact numbers needed for this assignment):							
Name	Ch	Function	Rx Freq	Rx Tone	Tx Freq	Tx Tone	Notes
BUT SUP T2	1	COMMAND	154.4150	123.0	159.0000		
CDF T27	7	TACTICAL	159.3075	192.8 (T16)	159.3075	192.8 (T16)	
CALCORD	15	MEDICAL	156.0750	156.7 (T6)	156.0750	156.7 (T6)	
A/G CDF T18	5	A-G CMD	159.3450	192.8 (T16)	159.3450	192.8 (T16)	A-G COMMAND
GUARD	16	EMERGENCY	168.6250		168.6250	110.9	
9. Prepared by: Name:		Ron Karlen		Pos/Title: RESL		Signature:	
ICS 204		Date/Time: 11/9/2018		2300 hours			

ASSIGNMENT LIST (ICS 204)

1. Incident Name: Camp Incident		2. Operational Period: Date From: 11/10/18 Date To: 11/11/18 Time From: 0700 Time To: 0700			3. Branch: I Div/Group: B Bravo		
4. Operations Personnel: Operations Section Chief: Mark Brown, Josh Bischof (T) Night Ops: Mark Higgins Branch Director: Sam Hicks Division/Group Supervisor: Steve Simons JASON DYER							
5. Resources Assigned:		** Resources Below in Bold are 12 Hour **			Reporting Location, Special Equipment, Remarks, Notes, and Information		
Resource Identifier	Leader	Personnel	Request #	Time	Location		
STC XTB 4237C	Steve Pevenage	22	E-111	0700-0700	DEADWOOD/HWY 70		
STC SHF 3675C	Mike Anderson	27	E-327	0700-1900	DEADWOOD/HWY 70		
STC TNF 4660C	Zach Stockdale	27	E-45	0700-1900	DEADWOOD/HWY 70		
STC				0700-0700	DEADWOOD/HWY 70		
ENG3 HTF E 316	Jason Lyons	3	E-495	0700-1900	DEADWOOD/HWY 70		
ENG3 SHF E 343	Adam Koller	6	E-525	0700-1900	DEADWOOD/HWY 70		
STG TGU 9258G	Jake Hannan	37	C-2	0700-0700	DEADWOOD/HWY 70		
STG				0700-0700	DEADWOOD/HWY 70		
STG				0700-0700	DEADWOOD/HWY 70		
STG				0700-0700	DEADWOOD/HWY 70		
WT PVT E-194 NORTHSTATE				0700-0700	DEADWOOD/HWY 70		
WT				0700-0700	DEADWOOD/HWY 70		
WT				0700-0700	DEADWOOD/HWY 70		
WT				0700-7000	DEADWOOD/HWY 70		
WT				0700-7000	DEADWOOD/HWY 70		
WT				0700-0700	DEADWOOD/HWY 70		
HEQB				0700-0700	DEADWOOD/HWY 70		
6. Work Assignments: Scout the Fire for Branch and Division Breaks to validate Control Lines Hold and Improve Control Lines to mitigate threat of fire escaping Prepare Structure Defense Plan Perform Tactical Patrol around structures and prevent potential of new starts							
7. Special Instructions:							
8. Communications (radio and/or phone contact numbers needed for this assignment):							
Name	Ch	Function	Rx Freq	Rx Tone	Tx Freq	Tx Tone	Notes
BUT SUP T2	1	COMMAND	154.4150	123.0	159.0000		tone 2 SUNSET
CDF T28	8	TACTICAL	151.1825	192.8 (T16)	151.1825	192.8 (T16)	
CALCORD	15	MEDICAL	156.0750	156.7 (T6)	156.0750	156.7 (T6)	
A/G CDF T18	5	A-G CMD	159.3450	192.8 (T16)	159.3450	192.8 (T16)	A-G COMMAND
GUARD	16	EMERGENCY	168.6250		168.6250	110.9	
9. Prepared by: Name: Ron Karlen		Pos/Title: RESL		Signature: <i>RK</i>			
ICS 204		Date/Time: 11/9/2018 2300 hours					

ASSIGNMENT LIST (ICS 204)

1. Incident Name: Camp Incident		2. Operational Period: Date From: 11/10/18 Date To: 11/11/18 Time From: 0700 Time To: 0700			3.		
4. Operations Personnel: Operations Section Chief: Mark Brown, Josh Bischof (T) Night Ops: Mark Higgins Branch Director: Sam Hicks Division/Group Supervisor: Rick Manson JEFF EDSON					Branch: I Div/Group: D Delta 1 of 2		
5. Resources Assigned:		** Resources Below in Bold are 12 Hour **			Reporting Location, Special Equipment, Remarks, Notes, and Information		
Resource Identifier	Leader	Personnel	Request #	Time	Location		
STC XAL 2012C	Steve Silva	22	E-105	0700-0700	BIG BEND/HWY 70		
STC OES 4818C	David Baldwin	23	E-59	0700-0700	BIG BEND/HWY 70		
STC MDF 3631C	Pat Preston	24	E-43	0700-1900	BIG BEND/HWY 70		
STC				0700-0700	BIG BEND/HWY 70		
STC				0700-0700	BIG BEND/HWY 70		
STC				0700-0700	BIG BEND/HWY 70		
ENG3 R05 E 574	Ryan Coleman	3	E-300	0700-1900	BIG BEND/HWY 70		
ENG6 R05 E 1	John Wickstrom	3	E-499	0700-1900	BIG BEND/HWY 70		
STG SHU 9242G	Josh Vereb	36	C-10	0700-0700	BIG BEND/HWY 70		
STG				0700-0700	BIG BEND/HWY 70		
STG				0700-0700	BIG BEND/HWY 70		
STG				0700-0700	BIG BEND/HWY 70		
CRW PVT FIRESTORM 1	Robert Denlay	20	C-17	0700-1900	BIG BEND/HWY 70		
DOZ PVT E-203 OROVILLE PRO	Kyle Smart	2	E-203	0700-0700	BIG BEND/HWY 70		
DOZ PVT E-209 OILAR AG	Andy Oilar	2	E-209	0700-0700	BIG BEND/HWY 70		
DOZ PVT E-212 NORTHWEST 1	Mike Salters	2	E-212	0700-0700	BIG BEND/HWY 70		
DOZ PVT E-214 NORTHWEST 2	Josh Turner	2	E-214	0700-0700	BIG BEND/HWY 70		
DOZ PVT E-220 MILLER TRUCK 2	Harold Miller	2	E-220	0700-0700	BIG BEND/HWY 70		
6. Work Assignments:							
Scout the Fire for Branch and Division Breaks to validate Control Lines							
Hold and Improve Control Lines to mitigate threat of fire escaping							
Prepare Structure Defense Plan							
Perform Tactical Patrol around structures and prevent potential of new starts							
7. Special Instructions:							
8. Communications (radio and/or phone contact numbers needed for this assignment):							
Name	Ch	Function	Rx Freq	Rx Tone	Tx Freq	Tx Tone	Notes
BUT SUP T2	1	COMMAND	154.4150	123.0	159.0000		TONE 2 SUNSET
CDF T29	9	TACTICAL	151.3475	192.8 (T16)	151.3475	192.8 (T16)	
CALCORD	15	MEDICAL	156.0750	156.7 (T6)	156.0750	156.7 (T6)	
A/G CDF T18	5	A-G CMD	159.3450	192.8 (T16)	159.3450	192.8 (T16)	A-G COMMAND
GUARD	16	EMERGENCY	168.6250		168.6250	110.9	
9. Prepared by: Name: Ron Karlen		Pos/Title: RESL		Signature: <i>RK</i>			
ICS 204	Date/Time: 11/9/2018		2300 hours				

ASSIGNMENT LIST (ICS 204)

1. Incident Name: Camp Incident		2. Operational Period: Date From: 11/10/18 Date To: 11/11/18 Time From: 0700 Time To: 0700			3. Branch: II Div/Group: E Echo Page 1 of 2		
4. Operations Personnel: Operations Section Chief: Mark Brown, Josh Bischof (T) Night Ops: Mark Higgins Branch Director: Brian Noel Division/Group Supervisor: TBA <i>Brian Hay</i>							
5. Resources Assigned:		** Resources Below in Bold are 12 Hour **			Reporting Location, Special Equipment, Remarks, Notes, and Information		
Resource Identifier	Leader	Personnel	Request #	Time	Location		
STA OES 4817A	Chris Allen	22	E-54	0700-0700	Lime Saddle Rec Area		
STA <i>E542A</i>	<i>ERIC</i>		<i>E-63</i>	0700-0700	Lime Saddle Rec Area		
STA <i>4280 A</i>	<i>HILLAL</i>		<i>E-81</i>	0700-0700	Lime Saddle Rec Area		
STC TGU 9250C	Gerry Magana	16	E-3	0700-0700	Lime Saddle Rec Area		
<i>STG STA 4160A</i>	<i>LOZAN</i>		<i>E-52</i>	0700-0700	Lime Saddle Rec Area		
STF <i>E546</i>				0700-0700	Lime Saddle Rec Area		
ENG6 R05 E6	Tim Underwood	3	E-503	0700-1900	Lime Saddle Rec Area		
ENG6 R05 E16	David Brainburg	3	E-509	0700-1900	Lime Saddle Rec Area		
ENG6 R05 E-9913	James Aurentz	3	E-517	0700-1900	Lime Saddle Rec Area		
ENG6 PVT E-532 DIAMOND 117	Tom Wesley	3	E-532	0700-1900	Lime Saddle Rec Area		
<i>STG CRW West Coast C82</i>	<i>Juan Mendosca</i>	<i>20</i>	<i>C-82</i>	0700-0700	Lime Saddle Rec Area		
DOZ PVT E-199 TOUGH COMPANY	Mark Hamilton	2	E-199	0700-0700	Lime Saddle Rec Area		
WT PVT E-179 HARDY WATER	Hardy	1	E-179	0700-1900	Lime Saddle Rec Area		
<i>WT CRW ASI</i>	<i>Jeff Harrison</i>	<i>20</i>	<i>C-79</i>	0700-0700	Lime Saddle Rec Area		
<i>WT FLOOD GATE E-603</i>	<i>RIK PIFFERO</i>	<i>2</i>	<i>E-603</i>	0700-0700	Lime Saddle Rec Area		
<i>WT Cold Springs E-176</i>	<i>KEN BRYANT</i>	<i>2</i>	<i>E-176</i>	0700-0700	Lime Saddle Rec Area		
<i>WT ENG E33 65 E-504</i>	<i>DANIEL</i>		<i>E-504</i>	0700-0700	Lime Saddle Rec Area		
<i>WT ENG E33 E505</i>	<i>BRANDON</i>		<i>E-505</i>	0700-1900			
6. Work Assignments:							
Scout the Fire for Branch and Division Breaks to validate Control Lines							
Hold and Improve Control Lines to mitigate threat of fire escaping							
Construct direct line							
Perform Tactical Patrol around structures and prevent potential of new starts							
Prepare Structure Defense Plan							
7. Special Instructions:							
<i>ENG E64 E512</i>	<i>Paul, Johnathan</i>		<i>E-512</i>	<i>0700-1900</i>			
<i>ENG E9 E350</i>	<i>REID BARNEY</i>		<i>E350</i>	<i>0700-1900</i>			
<i>ENG E41 E511</i>	<i>Dean P sciold</i>		<i>E511</i>	<i>0700-1900</i>			
<i>ENG 9908 E-297</i>	<i>Kenneth</i>		<i>E-297</i>	<i>0700-1900</i>			
8. Communications (radio and/or phone contact numbers needed for this assignment):							
Name	Ch	Function	Rx Freq	Rx Tone	Tx Freq	Tx Tone	Notes
BUT SUP T2	1	COMMAND	154.4150	129.0	159.0000		ZONE 2 SUNSET
CDF T30	10	TACTICAL	151.3925	192.8 (T16)	151.3925	192.8 (T16)	
CALCORD	15	MEDICAL	156.0750	156.7 (T6)	156.0750	156.7 (T6)	
A/G CDF T18	5	A-G CMD	159.3450	192.8 (T16)	159.3450	192.8 (T16)	A-G COMMAND
GUARD	16	EMERGENCY	168.6250		168.6250	110.9	
9. Prepared by: Name: Ron Karlen		Pos/Title: RESL		Signature: <i>PK</i>			
ICS 204		Date/Time: 11/9/2018 2300 hours					

STA 5125A E-93 HORTA E-93 0700-0700

ENG 452 E-500 RYAN E-500 0700-1900

ENG

ASSIGNMENT LIST (ICS 204)

1. Incident Name: Camp Incident		2. Operational Period: Date From: 11/10/18 Date To: 11/11/18 Time From: 0700 Time To: 0700			3. Branch: II Div/Group: G Golf		
4. Operations Personnel: Operations Section Chief: Mark Brown, Josh Bischof (T) Night Ops: Mark Higgins Branch Director: Brian Noel Division/Group Supervisor: TBA							
5. Resources Assigned:		** Resources Below in Bold are 12 Hour **			Reporting Location, Special Equipment, Remarks, Notes, and Information		
Resource Identifier	Leader	Personnel	Request #	Time	Location		
STA OES 4815A	Shawn Holden	17	E-50	0700-0700	NEAL/HWY 99		
STA				0700-0700	NEAL/HWY 99		
STC SKU 9260	Scott Tavalero	17	E-149	0700-0700	NEAL/HWY 99		
T/F 3800	Mike Sawyer	18	E-69	0700-0700	NEAL/HWY 99		
STC				0700-0700	NEAL/HWY 99		
STC				0700-0700	NEAL/HWY 99		
ENG6 R05 E9903	Will Nerbonne	3	E-510	0700-1900	NEAL/HWY 99		
STG TGU 9254G	Eric Marriot	37	C-3	0700-0700	NEAL/HWY 99		
CRW2 I/A FIRESTORM 5	Mac Norlie	20	C-16	0700-0700	NEAL/HWY 99		
STG CRW FRANCO C88	FRANCO	20	C-88	0700-0700	NEAL/HWY 99		
STG CRW FRANCO C93	FRANCO	20	C-93	0700-0700	NEAL/HWY 99		
WT BTC WT 74				0700-0700	NEAL/HWY 99		
WT PVT E-180				0700-0700	NEAL/HWY 99		
WT PVT E-182 TOUGH	Wayne Ronner	2	E-182	0700-0700	NEAL/HWY 99		
WT PVT E-184				0700-0700	NEAL/HWY 99		
WT PVT E-189 KIRACK 1	Mike Kirack	2	E-189	0700-0700	NEAL/HWY 99		
WT PVT E-190 KIRACK 2	Galen Hainline	2	E-190	0700-0700	NEAL/HWY 99		
HEQB				0700-0700	NEAL/HWY 99		
6. Work Assignments:							
Scout the Fire for Branch and Division Breaks to validate Control Lines							
Hold and improve Control Lines to mitigate threat of fire escaping							
Prepare Structure Defense Plan							
Perform Tactical Patrol around structures and prevent potential of new starts							
7. Special Instructions:							
WT BTC 31							
8. Communications (radio and/or phone contact numbers needed for this assignment):							
Name	Ch	Function	Rx Freq	Rx Tone	Tx Freq	Tx Tone	Notes
BUT SUP T2	1	COMMAND	154.4150	123.0	159.0000		tone 2 SUNSET
CDF T32	12	TACTICAL	151.2425	192.8 (T16)	151.2425	192.8 (T16)	
CALCORD	15	MEDICAL	156.0750	156.7 (T6)	156.0750	156.7 (T6)	
A/G CDF T18	5	A-G CMD	159.3450	192.8 (T16)	159.3450	192.8 (T16)	A-G COMMAND
GUARD	16	EMERGENCY	168.6250		168.6250	110.9	
9. Prepared by: Name: Ron Karlen		Pos/Title: RESL		Signature: <i>RK</i>			
ICS 204		Date/Time: 11/9/2018		2300 hours			

ASSIGNMENT LIST (ICS 204)

1. Incident Name: Camp Incident		2. Operational Period: Date From: 11/10/18 Date To: 11/11/18 Time From: 0700 Time To: 0700			3. Branch: III Div/Group: H Hotel Page 1 of 1		
4. Operations Personnel: Operations Section Chief: Mark Brown, Josh Bischof (T) Night Ops: Mark Higgins Branch Director: Shane Lauderdale Division/Group Supervisor: Mike Hildebrand							
5. Resources Assigned:		** Resources Below in Bold are 12 Hour **			Reporting Location, Special Equipment, Remarks, Notes, and Information		
Resource Identifier	Leader	Personnel	Request #	Time	Location		
STA XPL 4132A	Darren McMillian	17	E-53	0700-0700	Skyway x Honey Run		
STA				0700-0700	Skyway x Honey Run		
STG BEU 9460C	Mark Mancini	18	E-139	0700-0700	Skyway x Honey Run		
STC XGL 3050C	Scott Blake	20	E-67	0700-0700	Skyway x Honey Run		
STG LNU 9144G	Bret Murphy	33	C-30	0700-0700	Skyway x Honey Run		
STG				0700-0700	Skyway x Honey Run		
DOZ PVT 169				0700-0700	Skyway x Honey Run		
DOZ PVT				0700-0700	Skyway x Honey Run		
W/T PVT E168			E-168	0700-0700	Skyway x Honey Run		
W/T PVT E169			E-169	0700-0700	Skyway x Honey Run		
EMPF	Barker		O-228	0700-0700	Skyway x Honey Run		
EMTF	Bemer		O-236	0700-0700	Skyway x Honey Run		
MENDO CRW							
CAMP T/F 2	Jesse Alexander						
ENG 15			E				
MENDO IHC			H 9 C-	0700-1900			
Shasta T/F 1							
OES 8332							
6. Work Assignments:							
Scout the Fire for Branch and Division Breaks to validate Control Lines							
Hold and improve Control Lines to mitigate threat of fire escaping							
Prepare Structure Defense Plan							
Perform Tactical Patrol around structures and prevent potential of new starts							
7. Special Instructions:							
CRW C 87 Crew 2							
IRON MT CREW C-15							
STA 2011A E-75 EVANS E-75 0700-0700							
8. Communications (radio and/or phone contact numbers needed for this assignment):							
Name	Ch	Function	Rx Freq	Rx Tone	Tx Freq	Tx Tone	Notes
BUT SUP T2	1	COMMAND	154.4150	123.0	159.0000		TONE 2 SUNSET
CDF T34	13	TACTICAL	151.4675	192.8 (T16)	151.4675	192.8 (T16)	
CALCORD	15	MEDICAL	156.0750	156.7 (T6)	156.0750	156.7 (T6)	
A/G CDF T18	5	A-G CMD	159.3450	192.8 (T16)	159.3450	192.8 (T16)	A-G COMMAND
GUARD	16	EMERGENCY	168.6250		168.6250	110.9	
9. Prepared by: Name: Ron Karlen		Pos/Title: RESL		Signature: <i>RK</i>			
ICS 204		Date/Time: 11/9/2018 2300 hours					

CAMP T/F-1

TFLD JESSE ALEXANDER

ENG 15

ENG 5R

ENG 10

ENG 2154

ENG 2168

O-58

E-267 Type 3

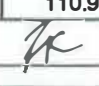
E-560 Type 2

E-5657b Type 3


E-266 Type 3

E-40 Type 3

ASSIGNMENT LIST (ICS 204)

1. Incident Name: Camp Incident		2. Operational Period: Date From: 11/10/18 Date To: 11/11/18 Time From: 0700 Time To: 0700			3. Branch: III Div/Group: N November Page 1 of 3		
4. Operations Personnel: Operations Section Chief: Mark Brown, Josh Bischof (T) Night Ops: Mark Higgins Branch Director: Shane Lauderdale Division/Group Supervisor: Gene Neely / Alan Whisler (T)					Reporting Location, Special Equipment, Remarks, Notes, and Information		
5. Resources Assigned: ** Resources Below in Bold are 12 Hour **					Time Location		
Resource Identifier	Leader	Personnel	Request #	Time	Location		
STA OES 2808A	Robert Lacroix	22	E-64	0700-0700	Skyway x Ponderosa		
STA OES 2809A	Erick Vandever	16	E-79	0700-0700	Skyway x Ponderosa		
STB XTE 3250B	Mike Bachmeyer	16	E-57	0700-0700	Skyway x Ponderosa		
T/F Xst 4208	Jeff Serpa	20	E-128	0700-0700	Skyway x Ponderosa		
STA				0700-0700	Skyway x Ponderosa		
STA				0700-0700	Skyway x Ponderosa		
STC HUU 9120C	Bo Lee	16	E-1	0700-0700	Skyway x Ponderosa		
STC FKU 9430C	Roger Raines	16	E-140	0700-0700	Skyway x Ponderosa		
STC CNT 2310C	Shanna Kuempel	17 22	E-107	0700-0700	Skyway x Ponderosa		
STC XSH 3150C	Dennis Beck	18	E-20	0700-0700	Skyway x Ponderosa		
STC XTB 4236C	Ed McDonald	22	E-60	0700-0700	Skyway x Ponderosa		
STC MRN 9150 C	JEANEY PIERCE	18		0700-0700	Skyway x Ponderosa		
STC				0700-0700	Skyway x Ponderosa		
ENG CHI 2R - OFF R&R	Steve Andrews	3	E-268	0700-0700	Skyway x Ponderosa		
STG TGU 9252G	Luke Thomas	35	C-1	0700-0700	Skyway x Ponderosa		
STG				0700-0700	Skyway x Ponderosa		
STG				0700-0700	Skyway x Ponderosa		
STG				0700-0700	Skyway x Ponderosa		
6. Work Assignments:							
Scout the Fire for Branch and Division Breaks to validate Control Lines							
Hold and Improve Control Lines to mitigate threat of fire escaping							
Prepare Structure Defense Plan							
Perform Tactical Patrol around structures and prevent potential of new starts							
7. Special Instructions:							
8. Communications (radio and/or phone contact numbers needed for this assignment):							
Name	Ch	Function	Rx Freq	Rx Tone	Tx Freq	Tx Tone	Notes
BUT SUP T2	1	COMMAND	154.4150	123.0	159.0000		
CDF T27		TACTICAL		192.8 (T16)	159.3075	192.8 (T16)	
CALCORD	15	MEDICAL	156.0750	156.7 (T6)	156.0750	156.7 (T6)	
A/G CDF T18	5	A-G CMD	159.3450	192.8 (T16)	159.3450	192.8 (T16)	A-G COMMAND
GUARD	16	EMERGENCY	168.6250		168.6250	110.9	
9. Prepared by: Name: Ron Karlen Pos/Title: RESL Signature: 							
ICS 204		Date/Time: 11/9/2018 2300 hours					

ASSIGNMENT LIST (ICS 204)

1. Incident Name: Camp Incident		2. Operational Period: Date From: 11/10/18 Date To: 11/11/18 Time From: 0700 Time To: 0700				3. Branch: III	
4. Operations Personnel: Operations Section Chief: Mark Brown, Josh Bischof (T) Night Ops: Mark Higgins Branch Director: Shane Lauderdale Division/Group Supervisor: Gene Neely					Div/Group: N November Page 3 of 3		
5. Resources Assigned:		** Resources Below in Bold are 12 Hour **				Reporting Location, Special Equipment, Remarks, Notes, and Information	
Resource Identifier	Leader	Personnel	Request #	Time	Location		
W/T PVT E-183			E-183	0700-0700	Skyway x Ponderosa		
W/T PVT Lonestar			E-186	0700-0700	Skyway x Ponderosa		
W/T PVT Susanville Towing	John Hay		E-191	0700-0700	Skyway x Ponderosa		
W/T PVT E-192			E-192	0700-0700	Skyway x Ponderosa		
W/T PVT TGU Mid State Const	Dee Holmes	2	E-193	0700-0700	Skyway x Ponderosa		
W/T PVT BTC 45	Stephan Simpson	1	E-13	0700-0700	Skyway x Ponderosa		
W/T PVT DADCO	David Bryning	2	E-188	0700-0700	Skyway x Ponderosa		
W/T PVT WT3 EI Medio	Stephen Terry	1		0700-1900	Skyway x Ponderosa		
W/T PVT 31				0700-0700	Skyway x Ponderosa		
FALM 2 Fallers Tree Work			0-302	0700-1900	Skyway x Ponderosa		
FALM 2 Faller Tree Work			0-303	0700-1900	Skyway x Ponderosa		
HEQB Jordan Hale	Jordan Hale	1	O-273	0700-0700	Skyway x Ponderosa		
HEQB				0700-0700	Skyway x Ponderosa		
WT PVT 31				0700-1900			
FEMT GREG							
FEMP FERREIRA							
6. Work Assignments:							
Scout the Fire for Branch and Division Breaks to validate Control Lines							
Hold and improve Control Lines to mitigate threat of fire escaping							
Prepare Structure Defense Plan							
Perform Tactical Patrol around structures and prevent potential of new starts							
7. Special Instructions:							
8. Communications (radio and/or phone contact numbers needed for this assignment):							
Name	Ch	Function	Rx Freq	Rx Tone	Tx Freq	Tx Tone	Notes
BUT SUP T2	1	COMMAND	154.4150	123.0	159.0000		TONE 2 SUNSET
CDF T27		TACTICAL		192.8 (T16)	159.3075	192.8 (T16)	
CALCORD	15	MEDICAL	156.0750	156.7 (T6)	156.0750	156.7 (T6)	
A/G CDF T18	5	A-G CMD	159.3450	192.8 (T16)	159.3450	192.8 (T16)	A-G COMMAND
GUARD	16	EMERGENCY	168.6250		168.6250	110.9	
9. Prepared by: Name: Ron Karlen		Pos/Title: RESL		Signature: 			
ICS 204		Date/Time: 11/9/2018 2300 hours					

ASSIGNMENT LIST (ICS 204)

1. Incident Name: Camp Incident		2. Operational Period: Date From: 11/10/18 Date To: 11/11/18 Time From: 0700 Time To: 0700			3. Branch: VI Div/Group: Y Yankee		
4. Operations Personnel: Operations Section Chief: Mark Brown, Josh Bischof (T) Night Ops: Mark Higgins Branch Director: TBA Division/Group Supervisor: James Allen							
6. Resources Assigned:		** Resources Below in Bold are 12 Hour **			Reporting Location, Special Equipment, Remarks, Notes, and Information		
Resource Identifier	Leader	Personnel	Request #	Time	Location		
DOZ Pumas Dozer 3	Carl	3		0700-0700	Hwy 70/Pulga		
DOZ PVT Medeiros	Pat Medeiros	2	E-197	0700-0700	Hwy 70/Pulga		
DOZ PVT Bio Industries	Larry Madison	3	E-205	0700-0700	Hwy 70/Pulga		
DOZ PVT Bio Industries	Pate Wilson	3	E-206	0700-0700	Hwy 70/Pulga		
DOZ PVT Precision	Jake Kaws	2	E-218	0700-0700	Hwy 70/Pulga		
DOZ PVT NEU 2342				0700-0700	190# Hwy 70/Pulga		
DOZ PVT SITY 2440				0700-0700	90# Hwy 70/Pulga		
DOZ PVT				0700-0700	Hwy 70/Pulga		
DOZ PVT				0700-0700	Hwy 70/Pulga		
DOZ PVT				0700-0700	Hwy 70/Pulga		
HEQB	Timothy Holliday	1	O-276	0700-0700	Hwy 70/Pulga		
FALM	AARON						
FALM	MORGON						
6. Work Assignments: Scout the Fire for Branch and Division Breaks to validate Control Lines							
7. Special Instructions:							
8. Communications (radio and/or phone contact numbers needed for this assignment):							
Name	Ch	Function	Rx Freq	Rx Tone	Tx Freq	Tx Tone	Notes
BUT SUP T2	1	COMMAND	154.4150	123.0	159.0000		ZONE 2 SUNSET
#N/A	#N/A	#N/A	#N/A	#N/A	#N/A	#N/A	#N/A
CALCORD	15	MEDICAL	156.0750	156.7 (T6)	156.0750	156.7 (T6)	
A/G CDF T18	5	A-G CMD	159.3450	192.8 (T16)	159.3450	192.8 (T16)	A-G COMMAND
GUARD	16	EMERGENCY	168.6250		168.6250	110.9	
9. Prepared by: Name: Ron Karlen		Pos/Title: RESL		Signature:			
ICS 204		Date/Time: 11/9/2018 2300 hours					

ASSIGNMENT LIST (ICS 204)

1. Incident Name: Camp Incident		2. Operational Period: Date From: 11/10/18 Date To: 11/11/18 Time From: 0700 Time To: 0700				3. Branch: RESCUE Div/Group: GROUP 1	
4. Operations Personnel: Operations Section Chief: Mark Brown, Josh Bischof (T) Night Ops: Mark Higgins Branch Director: TBA Division/Group Supervisor: SHANE COOK							
5. Resources Assigned:		** Resources Below in Bold are 12 Hour **				Reporting Location, Special Equipment, Remarks, Notes, and Information	
Resource Identifier	Leader	Personnel	Request #	Time	Location		
ENG PVT Mt Adams E300			E-296	0700-1900	Butte College		
ENG PVT Mt Adams E301			E-295	0700-1900	Butte College		
AMB				0700-1900	Butte College		
AMB				0700-1900	Butte College		
AMB				0700-1900	Butte College		
AMB				0700-1900	Butte College		
AMB				0700-1900	Butte College		
BUTTE T/F 2	Shane Cook						
E 591							
E 321							
ENG 4	E-591	Scott	E-591	0700-0700			
6. Work Assignments:							
7. Special Instructions: Report to Brush Creek Fire Station							
8. Communications (radio and/or phone contact numbers needed for this assignment):							
Name	Ch	Function	Rx Freq	Rx Tone	Tx Freq	Tx Tone	Notes
BUT SUP T2	1	COMMAND	154.4150	123.0	159.0000		
#N/A	#N/A	#N/A	#N/A	#N/A	#N/A	#N/A	#N/A
CALCORD	15	MEDICAL	156.0750	156.7 (T6)	156.0750	156.7 (T6)	
A/G CDF T18	5	A-G CMD	159.3450	192.8 (T16)	159.3450	192.8 (T16)	A-G COMMAND
GUARD	16	EMERGENCY	168.6250		168.6250	110.9	
9. Prepared by: Name: Ron Karlen		Pos/Title: RESL		Signature:			
ICS 204	Date/Time: 11/9/2018		2300 hours				

ASSIGNMENT LIST (ICS 204)

1. Incident Name: Camp Incident		2. Operational Period: Date From: 11/10/18 Date To: 11/11/18 Time From: 0700 Time To: 0700			3. Branch: BRANCH X NORTH CONT.		
4. Operations Personnel: Operations Section Chief: Mark Brown, Josh Bischof (T) Night Ops: Mark Higgins Branch Director: TBA TONY BROWNELL #N/A Division/Group Supervisor: TBA					Div/Group:		
5. Resources Assigned:		** Resources Below in Bold are 12 Hour **			Reporting Location, Special Equipment, Remarks, Notes, and Information Time Location		
Resource Identifier	Leader	Personnel	Request #				
ENG 5161	ADAM		E-594			Bushcreek FS	
ENG 5162	JOSH		E-595				
OR-ST 7	MIKE		E-534				
OR-ST 8	TONY		E-535				
OR-ST 9	DARRIN		E-536				
OR-ST 10	RICH		E-537				
OR-ST 12	MARSHALL		E-539				
OR-ST 17	SCOTT		E-544				
OR-ST 11	ANDY		E-538				
OR-ST 20	LANCE		E-577				
OR-ST-13	MARK		E-540				
OR-ST 18	CHRISTOPHER		E-545				
OR-ST 16	BRIAN		E-543				
OR-ST 15	ERIC		E-542				
34 DOZ SEE ATTACHED FROM UNASSIGNED							
HEQB LINGEN	DONALD LINGEN	1	0-272				
6. Work Assignments:							
7. Special Instructions: Report to Bushcreek Fire Station							
8. Communications (radio and/or phone contact numbers needed for this assignment):							
Name	Ch	Function	Rx Freq	Rx Tone	Tx Freq	Tx Tone	Notes
BUT SUP T2	1	COMMAND	154.4150	123.0	159.0000		tone 2 sunset
#N/A - TAC	#N/A	#N/A	#N/A	#N/A	#N/A	#N/A	#N/A
CALCORD	15	MEDICAL	156.0750	156.7 (T6)	156.0750	156.7 (T6)	
A/G CDF T18	5	A-G CMD	159.3450	192.8 (T16)	159.3450	192.8 (T16)	A-G COMMAND
GUARD	16	EMERGENCY	168.6250		168.6250	110.9	
9. Prepared by: Name: Ron Karlen		Pos/Title: RESL		Signature: <i>RR</i>			
ICS 204		Date/Time: 11/9/2018 2300 hours					

TAC CDF TAC 35

ICS 205 - INCIDENT RADIO COMMUNICATIONS PLAN

CONTROLLED UNCLASSIFIED
INFORMATION//BASIC

1. Incident Name:			2. Date/Time Prepared		3. Operational Period:			
Camp Incident			Date:	11/09/2018	Date From:	11/10/18	Date To:	11/11/18
			Time:	1830	Time From:	0700	Time To:	0700
4. Communications								
Ch#	Function	Name	Assigned To	Rx Freq	Rx Tone	Tx Freq	Tx Tone	Notes
1	COMMAND [1]	BUT SUP T2	COMMAND	154.4150	123.0	159.0000		TONE 2 SUNSET
2	COMMAND	BUT SUP T4	COMMAND	154.4150	123.0	159.0000	136.5	TONE 4 BALD MTN
3	COMMAND	BUT SUP T5	COMMAND	154.4150	123.0	159.0000	146.2	TONE 5 MT. ST. JOHN
4	COMMAND	BUT SUP T13	COMMAND	154.4150	123.0	159.0000	141.3	TONE 13 BLOOMER MTN
5	A-G CMD	A/G CDF T18	AIR TO GROUND	159.3450	192.8 (T16)	159.3450	192.8 (T16)	A-G COMMAND
6	A/G TAC	A/G CDF T25	AIR TO GROUND	159.2775	192.8 (T16)	159.2775	192.8 (T16)	A-G TACTICAL
7	TACTICAL	CDF T27	DIV A / N	159.3075	192.8 (T16)	159.3075	192.8 (T16)	
8	TACTICAL	CDF T28	DIV B	151.1825	192.8 (T16)	151.1825	192.8 (T16)	
9	TACTICAL	CDF T29	DIV D	151.3475	192.8 (T16)	151.3475	192.8 (T16)	
10	TACTICAL	CDF T30	DIV E / U	151.3925	192.8 (T16)	151.3925	192.8 (T16)	
11	TACTICAL	CDF T31	DIV F / Y	159.3825	192.8 (T16)	159.3825	192.8 (T16)	
12	TACTICAL	CDF T32	DIV G	151.2425	192.8 (T16)	151.2425	192.8 (T16)	
13	TACTICAL	CDF T34	DIV H	151.4675	192.8 (T16)	151.4675	192.8 (T16)	
14	TACTICAL	CDF T35	DIV K / CONT.	159.3225	192.8 (T16)	159.3225	192.8 (T16)	
15	MEDICAL	CALCORD	MEDICAL	156.0750	156.7 (T6)	156.0750	156.7 (T6)	
16	EMERGENCY	GUARD	EMERGENCY	168.6250		168.6250	110.9	
17								
18								
19								
20	EMERGENCY	GUARD	EMERGENCY	168.625		168.625	110.9	
5. Special Instructions								
6. Prepared by (Communications Unit Leader): Name:						Signature:		
ICS 205 - CONTROLLED UNCLASSIFIED INFORMATION//BASIC						Date/Time:	11/09/18	1830

MEDICAL PLAN ICS 206	INCIDENT NAME	DATE & TIME PREPARED	OPERATIONAL PERIOD
	CAMP	11/9/18 1700HRS	11/10/18-11/11/18 0700-0700HRS

MEDICAL AID STATIONS			
NAME	LOCATION	CONTACT NUMBER	SERVICE LEVEL
MERT & medical supplies	Incident Base		MD

TRANSPORTATION (Indicate air or ground)			
NAME	LOCATION	CONTACT NUMBER	SERVICE LEVEL
Butte County EMS	Chico, CA.	530-895-9124	ALS
Air Ambulance- Reach /CALSTAR	Marysville, CA.	800-338-4045	RN
Enloe Air Ambulance	Chico, CA.	800-344-1863	RN
Hoist Ships-C901-Day/Sac Metro-night	Oroville Helibase		

INCIDENT AMBULANCES							
NAME	ADDRESS	PHONE #	TRAVEL TIME- minutes		Trauma Center	Burn Center	Helipad
			AIR	GROUND			
Oroville	2767 Olive Hwy. Oroville, CA.	530-532-8334	12	37	<input type="checkbox"/> No	<input type="checkbox"/> No	<input checked="" type="checkbox"/> Yes
Orchard Biggs Memorial	240 Spruce St. Gridley, CA.	530-846-5671	15	40	<input type="checkbox"/> No	<input type="checkbox"/> No	<input type="checkbox"/> No
Enloe (Trauma Center)	1530 Esplanade Chico, CA.	530-332-7743	6	20	Level 2	<input type="checkbox"/> No	<input checked="" type="checkbox"/> Yes
U.C Davis Medical Center	2315 Stockton Blvd. Sacramento, CA.	916-734-3790	37	108	Level 1	<input checked="" type="checkbox"/> Yes	<input checked="" type="checkbox"/> Yes

MEDICAL EMERGENCY PROCEDURES

LINE EMERGENCY: CALCORD
 Crew Supervisor will contact Division Supervisor with patient complaint/condition and location.
 - Division Group Supervisor Contacts:
 1. Closest EMS resource
 2. Communications Unit
 - Communications Unit Contacts:
 1. Ground or Air Ambulance as requested.
 2. Medical Unit (916) 622-3371
 3. Safety
 4. Operations
 - Division Supervisor or designee will serve as point of contact and run medical emergency on assigned channel.
 1. A pre-assigned tactical frequency (CALCORD) should be used for IWI and only for duration of the emergency.
 - Communications Unit will clear the Command channel for emergency traffic as needed for duration of the need.

CAMP EMERGENCY:
 Contact Communications on CALCORD or @ 530-417-4561 with patient complaint and location Communications will respond appropriate medical response.
 - Communications contacts:
 1. Medical Unit
 2. Safety
 3. Logistics
 4. Operations
 5. Crew Supervisor
 6. Comp/Claims

INCIDENT REPORTING PROCEDURES:
****COLLECT ALL INFO BELOW PRIOR TO INITIATING EMERGENCY****
 CHIEF COMPLAINT _____
 LOCATION OF PATIENT _____
 POINT OF CONTACT _____
 TRANSPORTATION REQUESTED BY: AIR ___ GROUND ___
 POINT OF PICKUP _____
 LAT _____ LONG _____
 PATIENT UNIT ID _____
 IS AN LINE MEDIC WITH PATIENT: YES ___ NO ___
 AGE _____
 SEX: MALE ___ FEMALE ___
ALL EMERGENCIES---Secure the area and identify witnesses for later investigation. Keep an accurate log of events.

Hospital	LAT	LONG
Oroville	39 30.27	121 32.52
Orchard Biggs	39 22.10	121 41.40
Enloe Trauma Center	39 44.50	121 51.10
U.C Davis	38 33.33	121 27.32

PREPARED BY: (Medical Unit Leader): Name: Darin Nelson Signature: 

APPROVED BY: (Safety Officer): Name: Jack Piccinini Signature: 

TRAINING SPECIALIST MESSAGE

A Training Specialist is available for trainees on the incident.

All State, Federal and local government agency Trainees working on Position Task Books will need to register with the Incident Training Specialist in order to receive proper credit for your assignment. We are located next to Check-In.

Training Specialist's

Dennis Martin

(707) 479-8421



Register using the QR Code



CAL-FIRE INCIDENT MANAGEMENT TEAM IV



24HR LINE RESOURCE -- 2 OPERATOR

EMERGENCY SHIFT TICKET and EVALUATION FORM The responsible Government Officer will complete this form each shift.					Contractor Name THE BEST DOZERS LLC	
Incident or Project Name MISSION		Incident Number CA-MMU-018115	Request Number E-444		Operator #1 FIRST & LAST	Operator #2 FIRST & LAST
Agreement Number MMU-0000015953					Operator Furnished By: <input checked="" type="checkbox"/> Contractor <input type="checkbox"/> Government	
Equipment Make 1999 PETERBILT 379		Equipment Model / Type TRANSPORT 18 WHEEL			Operating Supplies Furnished By: <input checked="" type="checkbox"/> Contractor <input type="checkbox"/> Government	
Serial Number COMPLETE VIN#		License Number 12345A1				Equipment Status <input type="checkbox"/> Inspected <input checked="" type="checkbox"/> Under Agreement
Equipment Use (Circle) (Hours) Days / Miles Assignment					Released by Government <input type="checkbox"/> Inspected <input checked="" type="checkbox"/> Under Agreement	
Date Mo / Day	Start	Stop	Work	Remarks/Comments**		
9/5	0701	2400	17	DIV X		
9/6	0001	0700	7	DIV X		
Vendor Rating					Govt. Rep. Name and Position - PRINT	
Poor* Avg. Good Exc. N/A					Print Your Name	
Met Performance Expectations					Govt. Rep. Signature	
Equipment in Safe Working Condition					Your Signature	
Operator Skill Level					Contractor Signature	
Operates Safely					John Smith	
Operator's Cooperation Level					Date	
Overall Performance					Time	
					9/6/17 0700	
* NOTE: any rating of POOR requires an explanation in Comment Section.					CAL FIRE 297	
** Final evaluation or for more documentation, use a CALFIRE Form 230 or equivalent.					(Rev 3-2011)	

12HR LINE RESOURCE -- 1 OPERATOR

EMERGENCY SHIFT TICKET and EVALUATION FORM The responsible Government Officer will complete this form each shift.					Contractor Name THE BEST DOZERS LLC	
Incident or Project Name MISSION		Incident Number CA-MMU-018115	Request Number E-555		Operator #1 FIRST & LAST	Operator #2 -
Agreement Number MMU-0000015955					Operator Furnished By: <input checked="" type="checkbox"/> Contractor <input type="checkbox"/> Government	
Equipment Make 2004 CAT		Equipment Model / Type D6N / TYPE II E			Operating Supplies Furnished By: <input checked="" type="checkbox"/> Contractor <input type="checkbox"/> Government	
Serial Number COMPLETE VIN#		License Number -				Equipment Status <input type="checkbox"/> Inspected <input checked="" type="checkbox"/> Under Agreement
Equipment Use (Circle) (Hours) Days / Miles Assignment					Released by Government <input type="checkbox"/> Inspected <input checked="" type="checkbox"/> Under Agreement	
Date Mo / Day	Start	Stop	Work	Remarks/Comments**		
9/7	0001	0700	7	OFF SHIFT		
9/7	0701	1900	12	DIV X		
9/7	1901	2400	5	OFF SHIFT		
Vendor Rating					Govt. Rep. Name and Position - PRINT	
Poor* Avg. Good Exc. N/A					Print Your Name	
Met Performance Expectations					Govt. Rep. Signature	
Equipment in Safe Working Condition					Your Signature	
Operator Skill Level					Contractor Signature	
Operates Safely					John Smith	
Operator's Cooperation Level					Date	
Overall Performance					Time	
					9/5/17 1900	
* NOTE: any rating of POOR requires an explanation in Comment Section.					CAL FIRE 297	
** Final evaluation or for more documentation, use a CALFIRE Form 230 or equivalent.					(Rev 3-2011)	

24HR / 12HR TRANSITION SHIFT TICKET

EMERGENCY SHIFT TICKET and EVALUATION FORM The responsible Government Officer will complete this form each shift.					Contractor Name THE BEST DOZERS LLC	
Incident or Project Name MISSION		Incident Number CA-MMU-018115	Request Number E-444		Operator #1 FIRST & LAST	Operator #2 FIRST & LAST
Agreement Number MMU-0000015953					Operator Furnished By: <input checked="" type="checkbox"/> Contractor <input type="checkbox"/> Government	
Equipment Make 1999 PETERBILT 379		Equipment Model / Type TRANSPORT 18 WHEEL			Operating Supplies Furnished By: <input checked="" type="checkbox"/> Contractor <input type="checkbox"/> Government	
Serial Number COMPLETE VIN#		License Number 12345A1				Equipment Status <input type="checkbox"/> Inspected <input checked="" type="checkbox"/> Under Agreement
Equipment Use (Circle) (Hours) Days / Miles Assignment					Released by Government <input type="checkbox"/> Inspected <input checked="" type="checkbox"/> Under Agreement	
Date Mo / Day	Start	Stop	Work	Remarks/Comments**		
9/6	0701	1900	12	DIV X		
9/6	1901	2400	5	OFF SHIFT		
Vendor Rating					Govt. Rep. Name and Position - PRINT	
Poor* Avg. Good Exc. N/A					Print Your Name	
Met Performance Expectations					Govt. Rep. Signature	
Equipment in Safe Working Condition					Your Signature	
Operator Skill Level					Contractor Signature	
Operates Safely					John Smith	
Operator's Cooperation Level					Date	
Overall Performance					Time	
					9/5/17 1900	
* NOTE: any rating of POOR requires an explanation in Comment Section.					CAL FIRE 297	
** Final evaluation or for more documentation, use a CALFIRE Form 230 or equivalent.					(Rev 3-2011)	

24HR IN CAMP RESOURCE

EMERGENCY SHIFT TICKET and EVALUATION FORM The responsible Government Officer will complete this form each shift.					Contractor Name THE BEST CAMP LLC	
Incident or Project Name MISSION		Incident Number CA-MMU-018115	Request Number E-333		Operator #1 FIRST & LAST	Operator #2 -
Agreement Number MMU-0000015950					Operator Furnished By: <input checked="" type="checkbox"/> Contractor <input type="checkbox"/> Government	
Equipment Make TENT		Equipment Model / Type WESTERN SHELTER 19X35			Operating Supplies Furnished By: <input checked="" type="checkbox"/> Contractor <input type="checkbox"/> Government	
Serial Number -		License Number -				Equipment Status <input type="checkbox"/> Inspected <input checked="" type="checkbox"/> Under Agreement
Equipment Use (Circle) (Hours) Days / Miles Assignment					Released by Government <input type="checkbox"/> Inspected <input checked="" type="checkbox"/> Under Agreement	
Date Mo / Day	Start	Stop	Work	Remarks/Comments**		
9/2	0001	2400	24	ICP		
					(4) TENTS, CANOPY W/SIDES	
					FLOOR & INSULATED ROOF 570sq ft	
					NO DAMAGE / NO CLAIM	
Vendor Rating					Govt. Rep. Name and Position - PRINT	
Poor* Avg. Good Exc. N/A					Print Your Name	
Met Performance Expectations					Govt. Rep. Signature	
Equipment in Safe Working Condition					Your Signature	
Operator Skill Level					Contractor Signature	
Operates Safely					John Smith	
Operator's Cooperation Level					Date	
Overall Performance					Time	
					9/5/17 1900	
* NOTE: any rating of POOR requires an explanation in Comment Section.					CAL FIRE 297	
** Final evaluation or for more documentation, use a CALFIRE Form 230 or equivalent.					(Rev 3-2011)	

82

83

Incident#: 18CABTU016737 Request #:

GENERAL MESSAGE (ICS 213)

1. Incident Name (Optional):

2. To (Name and Position):

3. From (Name and Position):

4. Subject:

5. Date:

6. Time

7. Message:

8. Approved by: Name:

Signature: _____

Position/Title _____

9. Reply:

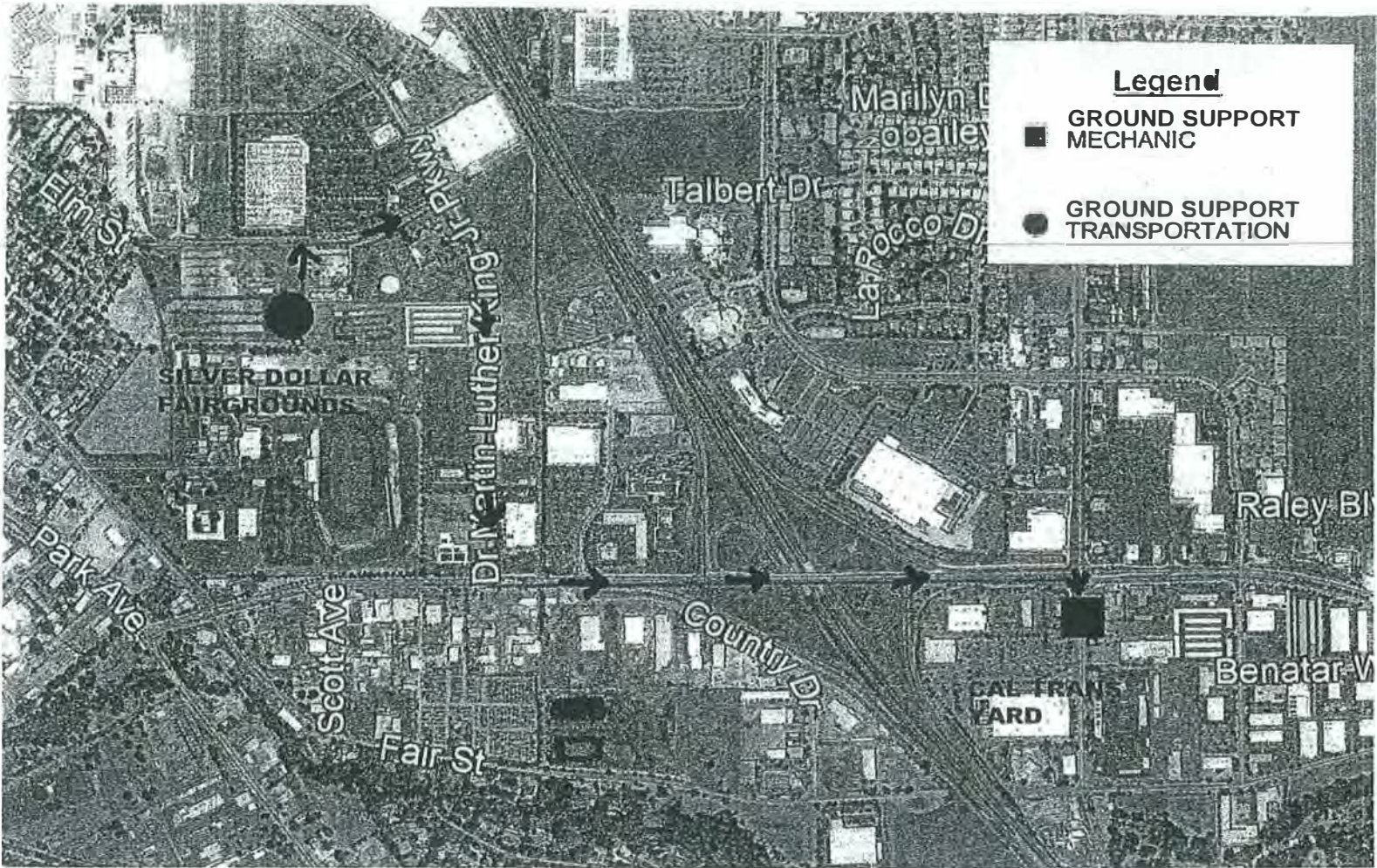
10. Replied by: Name:

Position/Title: _____

Signature: _____

ICS 213

Date/Time:

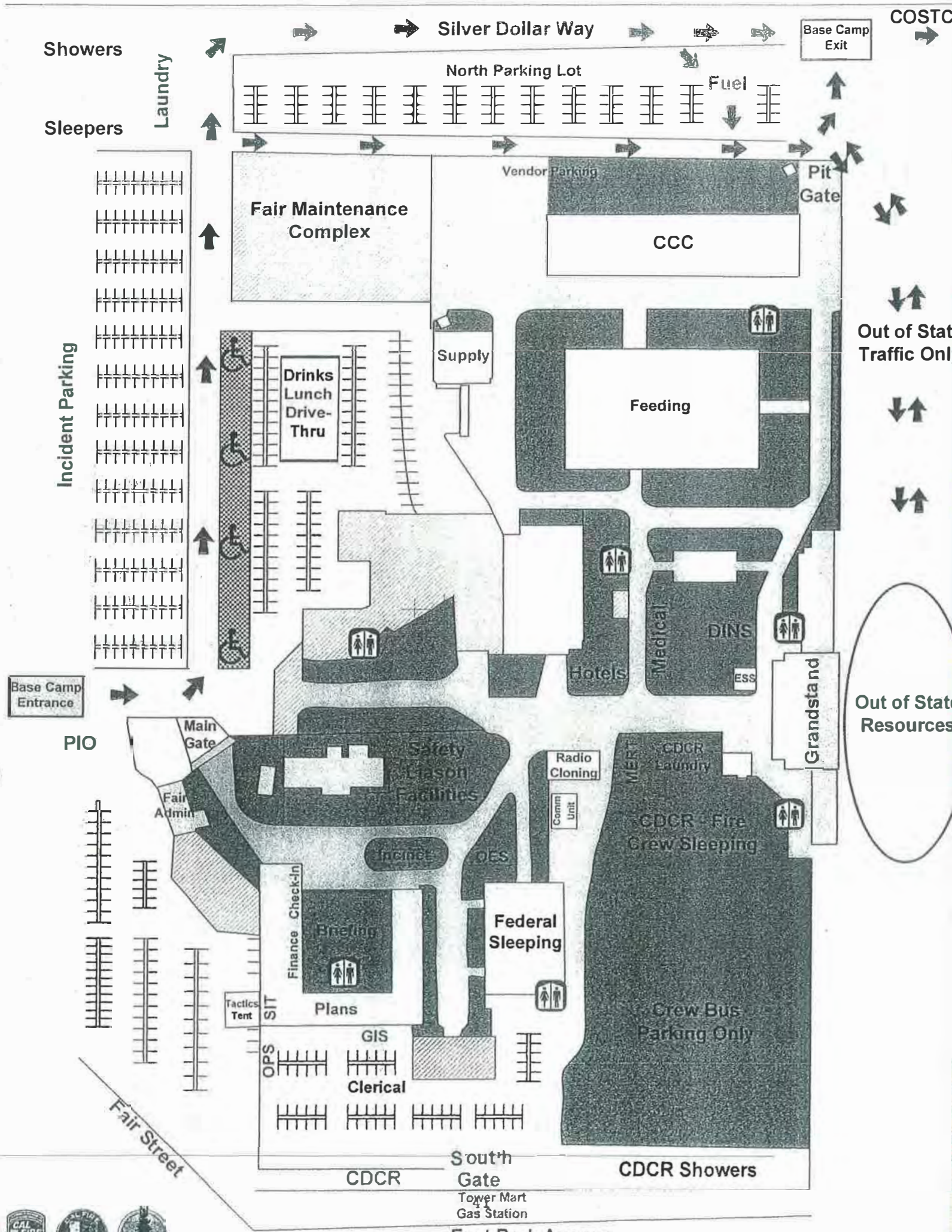


GROUND SUPPORT

DRIVING DIRECTIONS

- RIGHT ON TO SILVER DOLLAR WAY
- RIGHT ON DR. MARTIN LUTHER KING JR. PRKWAY
- LEFT ON EAST PARK AVE.
- RIGHT ON NOTRE DAME BLVD.
- 2535 NOTRE DAME BLVD., CHICO





THIS PAGE INTENTIONALLY LEFT BLANK

