

**\*\* CORRECTED \*\***  
**INCIDENT ACTION PLAN**  
**CAMP INCIDENT**

CA-BTU-016737

Monday



**OPERATIONAL PERIOD**

**11/12/2018 0700**

**to**

**11/13/2018 0700**

朱大 自述(1940) 46

# INCIDENT OBJECTIVES (ICS 202)

<b>1. Incident Name:</b> Camp	<b>2. Operational Period:</b>	Date From: 11/12/2018	Date To: 11/13/2018
		Time From: 0700	Time To: 0700

**3. Objective(s):**

**Management Objectives**

- Provide for and maintain public and first responder safety by utilizing the incident safety analysis process.
- Protect all critical infrastructure to include communication towers, water systems, natural gas, railroad and highways.
- It is the Unified Incident Commander's Leader's Intent to ensure transparent, timely and accurate communication at all levels of the incident.
- Be financially responsible for all management and fire suppression tactics.
- Foster and enhance community and political relationships.
- All management actions and efforts will be focused on serving, safeguarding and protecting the citizens and natural resources of Butte County.

**Control Objectives**

- Keep the fire East of Hwy 99 to Cohasset Rd.
- Keep the fire South of Kanaka Creek
- Keep the fire West of Oroville Quincy Hwy
- Keep the fire North of Hwy 149 and the intersection of Hwy 149 and Hwy 99

**General Situational Awareness:**

Steep and rugged terrain, critically dry and receptive fuel beds, active area for fire history and drought stressed trees.

**5. Site Safety Plan Required?** Yes  No

Approved Site Safety Plan(s) Located at:


**6. Incident Action Plan**

<input checked="" type="checkbox"/> ICS 203	<input checked="" type="checkbox"/> ICS 215A	<input type="checkbox"/> Phone List	<input type="checkbox"/> Fire Suppression Repair Plan
<input checked="" type="checkbox"/> ICS 204	<input checked="" type="checkbox"/> ICS 220	<input checked="" type="checkbox"/> Training Message	<input type="checkbox"/>
<input checked="" type="checkbox"/> ICS 205	<input checked="" type="checkbox"/> Incident Map	<input checked="" type="checkbox"/> Travel Map	<input type="checkbox"/>
<input checked="" type="checkbox"/> ICS 206	<input checked="" type="checkbox"/> Weather Forecast	<input type="checkbox"/> Demob Plan	<input type="checkbox"/>
<input type="checkbox"/> ICS 208	<input checked="" type="checkbox"/> Fire Behavior	<input checked="" type="checkbox"/> Finance Message	<input checked="" type="checkbox"/> ICS 214

<b>7. Prepared By:</b> Chris Burch	<b>Position/Title:</b> PSC	<b>Signature:</b> 
<b>8. Approved by Incident Commander:</b>	Dave Russell	<b>Signature:</b> 



## ORGANIZATION ASSIGNMENT LIST (ICS 203)

<b>1. Incident Name:</b> Camp		<b>2. Operational Period:</b> Date From: 11/12/2018 Date To: 11/13/2018 Time From: 0700 Time To: 0700	
<b>3. Incident Commander(s) and Command Staff:</b>		<b>7. Operation Section:</b>	
IC/UC's	T.Derum, S.Griffin, D. Bell, E. Reinbold	Operations	Mark Brown, Josh Bischof (T)
Deputy	Dave Russell	Deputy Operations	Bill Weiser, Monty Smith (T)
Safety Officer	Jack Piccinini, Doug Ferro (T)	Night Ops	Mark Higgins
Information Officer	Steve Kaufmann, Bill Murphy (T)	Staging Area	
Liaison Officer	Mitch Villapondo	Branch	I Sam E. Hicks
Law Enforcement Liaison	Lt. Bertain, Lt. Ford	Division/Group	A Steve Simons
<b>4. Agency/Organization Representatives:</b>		Division/Group	B Brian Ham
Agency/Organization	Name	Division/Group	D Rick Manson <i>MATT WALLER</i>
CHP	Cliff Morrison	Division/Group	
USFS	David Brillenz	Division/Group	
State Parks	Aaron Wright	Branch	II Brian Noel
Butt Co OES	Cindi Dunsmoor	Division/Group	E Dyer <i>JASON</i>
SPI	Steve Roberts	Division/Group	F Anthony Anderson
PG&E	Rob Cone	Division/Group	G Ron McLaughlin
CalOES	Kit Baley	Division/Group	
CCC	Shawn Fry	Division/Group	
Butte Co EOC	Megan Jessee	Branch	III Shane Lauderdale
Paradies EOC	Colette Curtis	Division/Group	H Mike Hildebrand
BIA	Greg Perry	Division/Group	K Shange Galves
BIA	George Violante	Division/Group	N Neely / Whisler (T)
		Division/Group	
		Division/Group	
		Branch	IV
		Division/Group	Q
		Division/Group	R
<b>5. Planning Section:</b>		Division/Group	
Chief	Chris Burch	Division/Group	
Deputy	Jason Martin	Division/Group	
Resource Unit	Jim Irving, Ron Karlen (T), Brian Torosian (T), Bennett Milloy (T)	Division/Group	
Situation Unit	Denny O'Neil	Branch	V
Documentation Unit	Paul Rutkowski	Division/Group	S
Demobilization Unit	Chris Lynch	Division/Group	T
GISS	Dan Dresselhaus, Stacy Stanish	Division/Group	
FBAN	Tim Chavez, Jonathan Pangburn (T)	Division/Group	
IMET	Alex Hoon	Division/Group	
Training Tech Spec	Dennis Martin	Air Operations Branch	Director: Greg Bradshaw
		Air Support Group Supervisor	Tim Perkins
		Air Tactical Group Supervisor	Jake Sjolund
		Helibase Manager	JC Collins
<b>6. Logistics Section</b>		<b>8. Finance/Administration Section:</b>	
Chief	Matt Reich	Chief	George Huang
Supply Unit	Mathew Brandt	Deputy	Mara Zaver
Facilities Unit	Shawn Burris, Travis Heard	Time Unit	Shane Beck, Greg Tunzi (T)
Ground Support Unit	Conor Stapleton, Mike Esparza	Procurement Unit	Joe Flagg
Ordering	Mike HeyFron, Brent Lee	Comp/Claims Unit	Sean Bowe/ Courtney Forsythe (T)
Hired Equipment Tech	Tim Bingham	Cost Unit	Rob Jenkins
Communications Unit	Tom Webb		
Medical Unit	Darin Nelson		
Motel Tech Spec	Dawn Muschetto, Matt Aldrich		
<b>Prepared By: Name:</b>	Jason Martin	<b>Position/Title:</b>	PSC
<b>ICS 203</b>		<b>Date/Time:</b>	11/11/2018 2300 hours
		<b>Signature:</b>	







*Fire Weather Forecast*



**FORECAST NO:** 4  
**PREDICTION FOR:** DAY/NIGHT SHIFT  
**SHIFT DATE:** November 12-13, 2018  
**TIME/DATE ISSUED:** November 11, 2018 2000 PDT

**NAME OF FIRE:** Camp  
**UNIT:** CA-BTU  
**SIGNED:** Alex Hoon  
**Incident Meteorologist**

**WEATHER DISCUSSION:** ...BREEZY NORTHEAST WINDS THROUGH THIS MORNING...

North wind event diminishes today with some areas above 3000ft still seeing breezy conditions through the morning. Lighter winds are expected for the afternoon, although conditions will remain very dry. Breezy drainage winds will develop over the Feather River Drainage by tonight and into Tuesday morning. Similar conditions are likely through the week with a slight warming trend each day. No precipitation is expected through the week.

**WEATHER FORECAST FOR TODAY:** ...GUSTY WINDS IN THE MORNING...

**WEATHER:** Sunny with heavy smoke.

**MAX TEMPERATURES:** 58-70°F. UP 2 DEGREES

**MIN HUMIDITY:** 8-12%. LITTLE CHANGE

**20-FOOT WIND:**

**SLOPE/VALLEY** - Northeast 10 mph with gusts to 15 mph in the morning, then becoming upslope/updrainage 3 to 8 mph in the afternoon.

**RIDGETOP-** Northeast 15 to 20 mph with gusts to 30-40 mph in the morning, then becoming 10 mph with gusts to 20 mph in the afternoon.

**MIXING HEIGHT:** 2000 ft AGL in the afternoon.

**TRANSPORT WINDS:** Northeast 10-15 mph.

**TONIGHT:** ...NORTHEAST WINDS INCREASING AFTER 2000...

**WEATHER:** Clear with smoke inversion.

**MIN TEMPERATURES:** 40-50°F....near 38 degrees in Chico. LITTLE CHANGE

**MAX HUMIDITY:** 20-25% UP 10%

**20-FOOT WIND:**

**SLOPE/VALLEY** - Downslope/downdrainage 3-6 mph. Except Feather River downdrainage 10-15 mph.

**RIDGETOP** - Northeast 10-15 mph with gusts up to 25 mph.

**EXTENDED FORECAST:** ...WARMING TREND THROUGH THE WEEK...LIGHTER WINDS...

**TUESDAY AND WEDNESDAY:** Mostly sunny. Max temps...57-67°F. Min RH 10-15%. Light updrainage winds during the afternoon. Northeast 5 to 10 mph with gusts to 20 mph overnight and into the morning hours.

**THURSDAY AND FRIDAY:** Partly cloudy. Max temps...60-73°F. Min RH 10-15%. Light updrainage winds during the afternoon. Northeast 5 to 10 mph with gusts to 20 mph overnight and into the morning hours.

## FIRE BEHAVIOR FORECAST

FORECAST NUMBER: 4	TYPE OF FIRE: Wildland Fire
FIRE NAME: Camp	OPERATIONAL PERIOD: 24hr 11/12 (0700-0700)
DATE ISSUED: 11/11	TIME ISSUED: 1800
UNIT: BTU	SIGNED: Jonathan Pangburn FBAN <i>with M. Park</i>

### INPUTS

#### WEATHER SUMMARY

**\*\*Warm and Dry with Moderate NE winds\*\***  
See Weather Forecast in IAP.

### OUTPUTS

#### GENERAL: **\*\*Possibility of Wind and Plume Dominated Fire Behavior\*\***

Expect varying windows for direct attack versus indirect, as related to flame lengths and rates of spread, based upon forecast wind and smoke coverage. The North wind event will continue throughout the operational period, continuing to align downslope with the Feather River and Butte Creek drainages. Expect upslope runs under the inversion, especially in bends sheltered from general winds.

ERC values have been at new record highs for the entire month of November. Dead fuel moistures remain critical. Fuel conditions are more similar to late summer. It has been 211 days since the area last received 0.5" of precipitation.

In the absence of weather conditions outside the forecast or extreme fire behavior conditions expect:

	Max. Flame Length	Max. Rate of Spread	Spotting	Probability of Ignition
Grass	< 7' (2 m)	100-150 ch/hr (2-3 km/hr)	< 0.5 mile (0.8 km)	69%
Grass/Shrub Mix	< 10' (3 m)	40-50 ch/hr (0.8-1 km/hr)	< 0.5 mile (0.8 km)	69%
Shrub	< 10' (3 m)	40-50 ch/hr (0.8-1 km/hr)	< 0.5 mile (0.8 km)	69%
Timber Litter	< 5' (1.5 m)	10-20 ch/hr (0.2-0.4 km/hr)	< 0.5 mile (0.8 km)	69%
Slash-Blowdown	10-15' (3-5 m)	30-45 ch/hr (0.6-0.9 km/hr)	< 0.5 mile (0.8 km)	69%
WUI/Shrub	< 10' (3 m)	150-200 ch/hr (3-4 km/hr)	< 0.5 mile (0.8 km)	69%

**\*\*minimum safety zone size for brush fuels is 1/3 acre (0.1 Ha) for a Strike Team of Engines.**

**\*\*minimum safety zone size for slash fuels is 1/2 acre (0.2 Ha) for a Strike Team of Engines.**

**\*\*minimum safety zone size for WUI/shrub fuels is 1 acre (0.4 Ha) for a Strike Team of Engines.**

#### SPECIFIC:

Branch I, VI: Fire will have single tree torching and passive crown fire activity in timber stands when making upslope runs. Expect mostly surface fire backing and flanking into the wind, with potential for short runs after rollout below. NE winds will continue to push the fire back into the black.

Branch II, III, X: Expect rapid rates of spread in grass fuels wherever torching and ember cast is seen. Flame lengths will be lower in the shorter grass near Highway 99.

Areas of tactical advantage (water features, highways), normally utilized as barriers to fire spread, continue to be compromised with winds via spotting, during the entire shift.

#### AIR OPERATIONS:

Anticipate turbulence, gusty winds, and limited visibility with consumption of heavy fuels. Little to no visibility in lower elevations.

Mixing height: 2,000 ft. AGL, Transport winds: NE 15 mph, Sunrise 0648, Sunset 1653.

### SAFETY

Do not let your guard down due to lack of Red Flag Warning. Sustained, strong winds are anticipated, along with medium-range spotting.



# Fuels and Fire Behavior Advisory

## Northern California Geographic Area

November 9, 2018

**Subject:** Unseasonably dry, mild weather the past few weeks has amplified fuel dryness in all size classes across Northern California. Extreme fire behavior and rapid to dangerous rates of spread continue to occur with high potential for that to persist through the week of November 11<sup>th</sup>.

**Discussion:** Unseasonably mild, very dry weather in recent weeks across Northern California this fall has kept fuels very dry and been expanding drought conditions. Although reasonably plentiful rain fell across much of the Geographic Area right around the beginning of October, recent dry weather has essentially erased any fuel moisture gains from that event. Much of the time since then, a ridge of high pressure persisting out over the Pacific Ocean has mostly been keeping a very dry airmass over the Geographic Area. The weather pattern during the past 3 weeks been particularly dry with a steady series of N to E foehn wind events that have contributed significantly to fuel dryness and challenging fire control conditions. Fires have recently shown or exhibited rapid or dangerous spread rates or generate extreme fire behavior. Even some internal islands in earlier large fire perimeters (e.g. Carr Fire) have reportedly rekindled, apparently from long-held residual heat. It is not just windy areas that have experienced rapid spread, but some fuel-and-slope-driven fires have also seen unseasonable, very active fire behavior.

**Difference from normal conditions:** Northern California normally sees enough precipitation by late October to bring about fire season-ending conditions. Early October's precipitation did mitigate fire danger for a bit, but unseasonably dry weather since then and several significant foehn wind events the past few weeks have created very dry fuel conditions much later into the fall season than usual. Very low daily afternoon minimum relative humidity (RH) values of 5-12% have been common, and recent wind events have limited overnight RH recovery to less than 25% in many locations and to less than 15% in some. This has had a dramatic effect on fuel dryness and fire danger indices which are now either near seasonal record values or at core fire season severity levels. For more information about the very unseasonable environmental conditions occurring, follow these links:

[https://gacc.nifc.gov/oncc/fuelsFireDanger\\_Bi.php](https://gacc.nifc.gov/oncc/fuelsFireDanger_Bi.php)      [https://gacc.nifc.gov/oncc/fuelsFireDanger\\_Erc.php](https://gacc.nifc.gov/oncc/fuelsFireDanger_Erc.php)  
[https://gacc.nifc.gov/oncc/fuelsFireDanger\\_Hundred.php](https://gacc.nifc.gov/oncc/fuelsFireDanger_Hundred.php)      [https://gacc.nifc.gov/oncc/fuelsFireDanger\\_Thousand.php](https://gacc.nifc.gov/oncc/fuelsFireDanger_Thousand.php)  
<https://www.esrl.noaa.gov/psd/eddi/> and [ftp://ftp.cdc.noaa.gov/Public/mhobbins/EDDI/CN\\_DEWS/EDDI\\_01mn.png](ftp://ftp.cdc.noaa.gov/Public/mhobbins/EDDI/CN_DEWS/EDDI_01mn.png)

### Concerns to Firefighters and the Public:

- One hour fine fuel loading across the Geographic Area remains well above normal.
- Firefighters should be prepared for potential extreme fire behavior and dangerous or otherwise rapid rates of spread at any time of day, especially during foehn wind events.
- The potential for extreme fire activity will be likely to continue until enough precipitation occurs to significantly increase fuel moisture.
- Rapid rates of spread could have a significant impact on public safety and make evacuations difficult.

### Mitigation Measures:

- All local and visiting firefighters need to remain aware of current and expected weather and burning conditions and consider such information while making strategic and tactical decisions.
- Employ LACES principles (Lookouts, Communications, Escape Routes, Safety zones).
- Review current fire potential products from Predictive Services at <https://gacc.nifc.gov/oncc/predictive/weather/index.htm> or potential Red Flag conditions from the National Weather Service at Weather at <https://www.wrh.noaa.gov/fire2/cafwl/>.

**Area of Concern:** Most areas across Northern California could see active fire behavior, but the most severe conditions are in the Sacramento Valley and surrounding foothills, the western slopes of Cascade and Northern Sierra Nevada mountains, and Mendocino County southward, including all of the Bay Area. The PSA numbers associated with those areas are NC03A, NC03B, NC05 and NC07.

# ASSIGNMENT LIST (ICS 204 WF)

CONTROLLED UNCLASSIFIED  
INFORMATION/BASIC

<b>1. Incident Name:</b> <p style="text-align: center;"><b>Camp</b></p>	<b>2. Operational Period:</b> Date From: 11/12/18    Date To: 11/13/18 Time From: 0700    Time To: 0700	<b>3. Branch</b> <b>Division</b> <p style="text-align: center;"><b>I</b>                      <b>A</b></p>
--	---	---

<b>4. Operations Personnel:</b>		Page 1 of 2    Alpha
Operations Section Chief: <b>Mark Brown, Josh Bischof (T)</b>	Night Ops: <b>Mark Higgins</b>	
Branch Director: <b>Sam E. Hicks</b>	Branch Safety: <b>Sciocchetti</b>	
Division/Group Supervisor: <b>Steve Simons</b>	Air Attack: <b>Jake Sjolund</b>	

5. Resources Assigned:		** Resources Below in Bold are 12 Hour **					
Resource Identifier	ALS	LWD	Leader	Personnel	Request #	Hours	Reporting Location
STC						0700-0700	CONCOW/HWY70
STC						0700-0700	CONCOW/HWY70
ENG SWS 11			<b>Wood, James</b>	3	<b>E-496</b>	<b>0700-1900</b>	<b>CONCOW/HWY70</b>
ENG UT-NUC BRUSH 83			<b>Stephens, Dane C</b>	3	<b>E-497</b>	<b>0700-1900</b>	<b>CONCOW/HWY70</b>
ENG NWS 693			<b>Jenkins, Bruce A</b>	3	<b>E-498</b>	<b>0700-1900</b>	<b>CONCOW/HWY70</b>
ENG NWS BRUSH 25			<b>Long, Spencer D</b>	3	<b>E-501</b>	<b>0700-1900</b>	<b>CONCOW/HWY70</b>
ENG SES State			<b>Paul Bedont</b>	3	<b>E-502</b>	<b>0700-1900</b>	<b>CONCOW/HWY70</b>
DOZ PVT E-22			Tom Funes	2	E-22	0700-0700	CONCOW/HWY70
<del>DOZ PVT E-416</del> → Div MWM			Rick Bradley	2	E-416	0700-0700	CONCOW/HWY70
<del>DOZ PVT E-417</del> → Div MWM			Monte West	2	E-417	0700-0700	CONCOW/HWY70
DOZ						0700-0700	CONCOW/HWY70
DOZ						0700-0700	CONCOW/HWY70
<del>W/T PVT E-175</del> → Div D				0	E-175	0700-0700	CONCOW/HWY70
<del>W/T PVT E-185</del> → Div D			<b>Will Christensen</b>	2	E-185	0700-0700	CONCOW/HWY70
W/T E 707						0700-0700	CONCOW/HWY70
MAST PVT E-665			<b>Jamie Slack</b>	0	E-665	<b>0700-1900</b>	<b>CONCOW/HWY70</b>
MAST						<b>0700-1900</b>	<b>CONCOW/HWY70</b>
MAST						<b>0700-1900</b>	<b>CONCOW/HWY70</b>

**6. Work Assignments:**  
 Construct indirect line from Four Trees OHV to FS road 28  
 Hold and improve Control Lines to mitigate threat of fire escaping  
 Mop up 100' in from control lines to eliminate threat to fire-line  
 Direct fire attack and perimeter control

**7. Special Instructions:**

8. Communications							
Name	Ch	Function	Rx Freq	Rx Tone	Tx Freq	Tx Tone	Notes
BUT SUP T2	1	COMMAND	154.4150	123.0	159.0000	123	TONE 2 SUNSET
CDF T27	7	TACTICAL	159.3075	192.8 (T16)	159.3075	192.8 (T16)	
CALCORD	15	MEDICAL	156.0750	156.7 (T6)	156.0750	156.7 (T6)	
A/G CDF T18	5	A/G CMD	159.3450	192.8 (T16)	159.3450	192.8 (T16)	A-G COMMAND
GUARD	16	EMERGENCY	168.6250		168.6250	110.9	

**9. Prepared by: Name:** Jim Irving                      RESL  
 Signature:   
**ICS 204**                      Date/Time: 11/11/2018 2200                      Personnel Count: 23







# ASSIGNMENT LIST (ICS 204 WF)

CONTROLLED UNCLASSIFIED  
INFORMATION//BASIC

<b>1. Incident Name:</b> <p style="text-align: center;"><b>Camp</b></p>	<b>2. Operational Period:</b> Date From: 11/12/18    Date To: 11/13/18 Time From: 0700    Time To: 0700	<b>3. Branch</b> <b>Division</b> <p style="text-align: center;"><b>I</b>                      <b>B</b></p>
--	---	---

Page 1 of 1    **Bravo**

<b>4. Operations Personnel:</b>	
Operations Section Chief: <b>Mark Brown, Josh Bischof (T)</b>	Night Ops: <b>Mark Higgins</b>
Branch Director: <b>Sam E. Hicks</b>	Branch Safety: <b>Sciocchetti</b>
Division/Group Supervisor: <b>Brian Ham</b>	Air Attack: <b>Jake Sjolund</b>

<b>5. Resources Assigned:</b>							
<b>** Resources Below in Bold are 12 Hour **</b>							
Resource Identifier	ALS	LWD	Leader	Personnel	Request #	Hours	Reporting Location
STC OES ST16			Brian Stewart	16	E-543	0700-0700	PINES HARDWARE/HWY70
STC OES ST17			Scott Cowan	17	E-544	0700-0700	PINES HARDWARE/HWY70
STC						0700-0700	PINES HARDWARE/HWY70
STC						0700-0700	PINES HARDWARE/HWY70
ENG 9908			<b>Kenneth Mitchel</b>	3	<b>E-297</b>	<b>0700-1900</b>	PINES HARDWARE/HWY70
ENG 574			<b>Ryan Coleman</b>	3	<b>E-300</b>	<b>0700-1900</b>	PINES HARDWARE/HWY70
ENG 9			<b>Reid Barnuy</b>	3	<b>E-305</b>	<b>0700-1900</b>	PINES HARDWARE/HWY70
STG						0700-0700	PINES HARDWARE/HWY70
STG						0700-0700	PINES HARDWARE/HWY70
STG						0700-0700	PINES HARDWARE/HWY70
CRW MDF 16 C-18			<b>Kochar, Krishan</b>	20	<b>C-18</b>	<b>0700-1900</b>	PINES HARDWARE/HWY70
CRW ORS Patrick C-76			<b>Smith, Weston</b>	20	<b>C-76</b>	<b>0700-1900</b>	PINES HARDWARE/HWY70
CRW ORS North C-84			<b>Rincon, Jose</b>	20	<b>C-84</b>	<b>0700-1900</b>	PINES HARDWARE/HWY70
CRW ORS Miller Timber C-90			<del>Dennis, Joshua</del>	20	<b>C-90</b>	<b>0700-1900</b>	PINES HARDWARE/HWY70
DOZ PVT- E-398			Wyatt Montz	3	E-398	0700-0700	PINES HARDWARE/HWY70
DOZ PVT E-401			Bob Noble	2	E-401	0700-0700	PINES HARDWARE/HWY70
DOZ						0700-0700	PINES HARDWARE/HWY70
WIT PVT E-194			Pruitt, Darryl	2	E-194	0700-0700	PINES HARDWARE/HWY70

**6. Work Assignments:**  
 Hold fire within Established control lines  
 Mop up 100' in from control lines to eliminate threat to fire-line  
 Direct fire attack and perimeter control

**7. Special Instructions:**  
 WIT PVT E-601  
 WIT PVT E-658

<b>8. Communications</b>							
Name	Ch	Function	Rx Freq	Rx Tone	Tx Freq	Tx Tone	Notes
BUT SUP T2	1	COMMAND	154.4150	123.0	159.0000	123	tone 2 SUNSET
CDF T28	8	TACTICAL	151.1825	192.8 (T16)	151.1825	192.8 (T16)	
CALCORD	15	MEDICAL	156.0750	156.7 (T6)	156.0750	156.7 (T6)	
A/G CDF T18	5	A/G CMD	159.3450	192.8 (T16)	159.3450	192.8 (T16)	A-G COMMAND
GUARD	16	EMERGENCY	168.6250		168.6250	110.9	

**9. Prepared by: Name:** Jim Irving                      RESL  
 Signature:   
**ICS 204**    Date/Time: 11/11/2018 2200                      Personnel Count: 129

# ASSIGNMENT LIST (ICS 204 WF)

CONTROLLED UNCLASSIFIED  
INFORMATION//BASIC

<b>1. Incident Name:</b> <p style="text-align: center; font-size: 1.2em;">Camp</p>	<b>2. Operational Period:</b> Date From: 11/12/18    Date To: 11/13/18 Time From: 0700    Time To: 0700	<b>3. Branch</b> <b>Division</b> <p style="text-align: center; font-size: 1.5em;">I                      D</p>
---	---	---

**4. Operations Personnel:** Page 1 of 3    Delta

Operations Section Chief: <b>Mark Brown, Josh Bischof (T)</b>	Night Ops: <b>Mark Higgins</b>
Branch Director: <b>Sam E. Hicks</b>	Branch Safety: <b>Sciocchetti</b>
Division/Group Supervisor: <del>Rick Manson</del> <b>MATT WALLER</b>	Air Attack: <b>Jake Sjolund</b>

5. Resources Assigned:		** Resources Below in Bold are 12 Hour **					
Resource Identifier	ALS	LWD	Leader	Personnel	Request #	Hours	Reporting Location
STC OES 4818C			Baldwin, David	<del>24</del> <b>22</b>	E-59	0700-0700	Lime Saddle Rec
STC XAL 2012C			Silva, Steve	22	E-105	0700-0700	Lime Saddle Rec
STC OR ST18			Burton, Chris	17	E-545	0700-0700	Lime Saddle Rec
STC						0700-0700	Lime Saddle Rec
STC						0700-0700	Lime Saddle Rec
STC						0700-0700	Lime Saddle Rec
STF OR ST19			Golightly, Jeff	<b>11</b>	E-546	0700-0700	Lime Saddle Rec
STF OR ST21			Connolly, Trish	<del>18</del> <b>18</b>	E-578	0700-0700	Lime Saddle Rec
ENG R06 03 <b>(12)</b>			Noah Lafferty	3	E-507	0700-0700	Lime Saddle Rec
ENG R06 13 <b>(12)</b>			Haney, Scott	3	E-312	0700-0700	Lime Saddle Rec
ENG R06 28 <b>(12)</b>			Titus, Tim	3	E-506	0700-0700	Lime Saddle Rec
ENG R06 47 <b>(12)</b>			Austin, David T	3	E-513	0700-0700	Lime Saddle Rec
STG						0700-0700	Lime Saddle Rec
STG						0700-0700	Lime Saddle Rec
STG						0700-0700	Lime Saddle Rec
CRW PVT FIRESTORM 1 C-17			<b>Robert Denlay</b>	20	<b>C-17</b>	<b>0700-1900</b>	Lime Saddle Rec
CRW ORS Oregon Woods C-83			<b>Charles Watkins</b>	20	<b>C-83</b>	<b>0700-1900</b>	Lime Saddle Rec
CRW ORS Pacific Oasis C-85			<b>Jimenez, Alfonso</b>	20	<b>C-85</b>	<b>0700-1900</b>	Lime Saddle Rec

**6. Work Assignments:**  
 Construct direct line from Red Eye to Div B break. Hold fire within Established control lines  
 Tactical Patrol around structures for the potential of new starts, to prevent structure damage, and alleviate citizen concerns  
 Hold and improve Control Lines to mitigate threat of fire escaping. Mop up 100' in from control lines to eliminate threat to fire-line  
 Direct fire attack and perimeter control

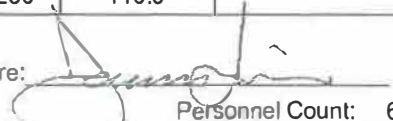
**7. Special Instructions:**  
 Personnel may be transported across the Feather River arm of Lake Oroville using the DRW boat. All personnel are required to wear a PFD

8. Communications							
Name	Ch	Function	Rx Freq	Rx Tone	Tx Freq	Tx Tone	Notes
BUT SUP T2	1	COMMAND	154.4150	123.0	159.0000	123	STONE 2 SUNSET
CDF T29	9	TACTICAL	151.3475	192.8 (T16)	151.3475	192.8 (T16)	
CALCORD	15	MEDICAL	156.0750	156.7 (T6)	156.0750	156.7 (T6)	
A/G CDF T18	5	A/G CMD	159.3450	192.8 (T16)	159.3450	192.8 (T16)	A-G COMMAND
GUARD	16	EMERGENCY	168.6250		168.6250	110.9	

**9. Prepared by: Name:** Jim Irving    **RESL**    Signature:   
**ICS 204**    Date/Time: 11/11/2018 2200    Personnel Count: 152

# ASSIGNMENT LIST (ICS 204 WF)

CONTROLLED UNCLASSIFIED  
INFORMATION/BASIC

<b>1. Incident Name:</b> <p style="text-align: center; font-size: 1.2em;">Camp</p>		<b>2. Operational Period:</b> Date From: 11/12/18      Date To: 11/13/18 Time From: 0700              Time To: 0700				<b>3. Branch</b> <p style="text-align: center; font-size: 1.5em;">I</p>		<b>Division</b> <p style="text-align: center; font-size: 1.5em;">D</p>	
<b>4. Operations Personnel:</b>						Page 2 of 3		Delta	
Operations Section Chief: <b>Mark Brown, Josh Bischof (T)</b>				Night Ops: <b>Mark Higgins</b>					
Branch Director: <b>Sam E. Hicks</b>				Branch Safety: <b>Sciocchetti</b>					
Division/Group Supervisor: <b>Rick Manson MATT WALLEN</b>				Air Attack: <b>Jake Sjolund</b>					
<b>5. Resources Assigned:</b>		** Resources Below in Bold are 12 Hour **							
Resource Identifier	ALS	LWD	Leader	Personnel	Request #	Hours	Reporting Location		
CRW ORS Patrick C-94			<b>Dustin Duffy</b>	20	<b>C-94</b>	<b>0700-1900</b>	<b>Lime Saddle Rec</b>		
CRW ORS West Coast C-95			<b>Mendoza, Juan</b>	20	<b>C-95</b>	<b>0700-1900</b>	<b>Lime Saddle Rec</b>		
DOZ PVT E-199			Mark Hamilton	2	E-199	0700-0700	Lime Saddle Rec		
DOZ PVT E-203			Kyle Smart	2	E-203	0700-0700	Lime Saddle Rec		
DOZ PVT E-212			Mike Salters	2	E-212	0700-0700	Lime Saddle Rec		
DOZ PVT E-213			Don George	2	E-213	0700-0700	Lime Saddle Rec		
DOZ PVT E-214			Josh Turner	2	E-214	0700-0700	Lime Saddle Rec		
DOZ PVT E-220 → Div MM			Harold Miller	2	E-220	0700-0700	Lime Saddle Rec		
DOZ PVT E-389 → Div MM			Mike Miser	2	E-389	0700-0700	Lime Saddle Rec		
DOZ PVT E-413			Tim Hatler	2	E-413	0700-0700	Lime Saddle Rec		
DOZ PVT E-997					E-997	0700-0700	Lime Saddle Rec		
DOZ 2346 (12)						0700-0700	Lime Saddle Rec		
DOZ 2142 (12)						0700-0700	Lime Saddle Rec		
DOZ 2542 (12)						0700-0700	Lime Saddle Rec		
DOZ						0700-0700	Lime Saddle Rec		
DOZ						0700-0700	Lime Saddle Rec		
W/T PVT E-597 Black Cat			Ray Steinhoff	2	E-597	0700-0700	Lime Saddle Rec		
W/T PVT E-600 Roll'n Rock			Blake Hisey	2	E-600	0700-0700	Lime Saddle Rec		
<b>6. Work Assignments:</b>									
Construct direct line from Red Eye to Div B break. Hold fire within Established control lines									
Tactical Patrol around structures for the potential of new starts, to prevent structure damage, and alleviate citizen concerns									
Hold and improve Control Lines to mitigate threat of fire escaping. Mop up 100' in from control lines to eliminate threat to fire-line									
Direct fire attack and perimeter control									
<b>7. Special Instructions:</b>									
<b>8. Communications</b>									
Name	Ch	Function	Rx Freq	Rx Tone	Tx Freq	Tx Tone	Notes		
BUT SUP T2	1	COMMAND	154.4150	123.0	159.0000	123	TONE 2 SUNSET		
CDF T29	9	TACTICAL	151.3475	192.8 (T16)	151.3475	192.8 (T16)			
CALCORD	15	MEDICAL	156.0750	156.7 (T6)	156.0750	156.7 (T6)			
A/G CDF T18	5	A/G CMD	159.3450	192.8 (T16)	159.3450	192.8 (T16)	A-G COMMAND		
GUARD	16	EMERGENCY	168.6250		168.6250	110.9			
<b>9. Prepared by: Name:</b>		Jim Irving			RESL				
ICS 204		Date/Time: 11/11/2018 2200			Signature: 		Personnel Count: 60		



# ASSIGNMENT LIST (ICS 204 WF)

CONTROLLED UNCLASSIFIED  
INFORMATION//BASIC

<b>1. Incident Name:</b> <p style="text-align: center; font-size: 1.2em;">Camp</p>	<b>2. Operational Period:</b> Date From: 11/12/18    Date To: 11/13/18 Time From: 0700    Time To: 0700	<b>3. Branch</b> <b>Division</b> <p style="text-align: center; font-size: 1.5em;">I                      D</p> <p style="text-align: center;">Page 3 of 3              Delta</p>
<b>4. Operations Personnel:</b> Operations Section Chief: <b>Mark Brown, Josh Bischof (T)</b> Branch Director: <b>Sam E. Hicks</b> Division/Group Supervisor: <b>Rick Manson</b> <i>MATT WALLER</i>		Night Ops: <b>Mark Higgins</b> Branch Safety: <b>Sciocchetti</b> Air Attack: <b>Jake Sjolund</b>

5. Resources Assigned:		** Resources Below in Bold are 12 Hour **					
Resource Identifier	ALS	LWD	Leader	Personnel	Request #	Hours	Reporting Location
<del>W/T PVT E-607 Katch</del> → 1			Reginald Ortega	2	E-607	0700-0700	Lime Saddle Rec
W/T PVT E-648			Ron Friel	2	E-648	0700-0700	Lime Saddle Rec
W/T PVT E-652			Ryan Kitchens	2	E-652	0700-0700	Lime Saddle Rec
W/T PVT E-661 (6x6)			Tammy Andrews	2	E-661	0700-0700	Lime Saddle Rec
W/T PVT E-663			Eric Korbly	2	E-663	0700-0700	Lime Saddle Rec
HEQB						0700-0700	Lime Saddle Rec
HEQB						0700-0700	Lime Saddle Rec
HEQB						0700-0700	Lime Saddle Rec
<i>W/T BTC W/45</i>							
<i>DOZ PVT E-392 ← E</i>							
<i>DOZ PVT E-644 ← MM</i>							
<i>DOZ PVT E-645 ← MM</i>							
<i>W/T PVT E-175 ← DIV A</i>							
<i>W/T PVT E-185 ← DIV A</i>							

**6. Work Assignments:**  
 Construct direct line from Red Eye to Div B break. Hold fire within Established control lines  
 Tactical Patrol around structures for the potential of new starts, to prevent structure damage, and alleviate citizen concerns  
 Hold and improve Control Lines to mitigate threat of fire escaping. Mop up 100' in from control lines to eliminate threat to fire-line  
 Direct fire attack and perimeter control

**7. Special Instructions:**

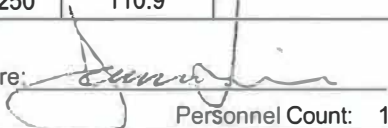
8. Communications							
Name	Ch	Function	Rx Freq	Rx Tone	Tx Freq	Tx Tone	Notes
BUT SUP T2	1	COMMAND	154.4150	123.0	159.0000	123	TONE 2 SUNSET
CDF T29	9	TACTICAL	151.3475	192.8 (T16)	151.3475	192.8 (T16)	
CALCORD	15	MEDICAL	156.0750	156.7 (T6)	156.0750	156.7 (T6)	
A/G CDF T18	5	A/G CMD	159.3450	192.8 (T16)	159.3450	192.8 (T16)	A-G COMMAND
GUARD	16	EMERGENCY	168.6250		168.6250	110.9	

**9. Prepared by: Name:** Jim Irving                      RESL                      Signature:

ICS 204                      Date/Time: 11/11/2018 2200                      Personnel Count: 10

# ASSIGNMENT LIST (ICS 204 WF)

CONTROLLED UNCLASSIFIED  
INFORMATION/BASIC

<b>1. Incident Name:</b> <p style="text-align: center; font-size: 1.2em;">Camp</p>		<b>2. Operational Period:</b> Date From: 11/12/18      Date To: 11/13/18 Time From: 0700              Time To: 0700				<b>3. Branch</b> <p style="text-align: center; font-size: 1.5em;">II</p>		<b>Division</b> <p style="text-align: center; font-size: 1.5em;">E</p>	
<b>4. Operations Personnel:</b>						<b>Page 1 of 2</b>		<b>Echo</b>	
Operations Section Chief: <b>Mark Brown, Josh Bischof (T)</b>				Night Ops: <b>Mark Higgins</b>					
Branch Director: <b>Brian Noel</b>				Branch Safety: <b>Sciocchetti</b>					
Division/Group Supervisor: <b>Dyer</b>				Air Attack: <b>Jake Sjolund</b>					
<b>5. Resources Assigned:</b>		<b>** Resources Below in Bold are 12 Hour **</b>							
Resource Identifier	ALS	LWD	Leader	Personnel	Request #	Hours	Reporting Location		
STA XSA 4160A			Wegener, Kevin L	20 +/-	E-52	0700-0700	DP-60		
STA OES 4817A			Allen, Christopher E	22	E-54	0700-0700	DP-60		
STA XYO 4280A			Binns, Steve	20 +/-	E-81	0700-0700	DP-60		
STA OR ST12			Rash, Marshall	22	E-539	0700-0700	DP-60		
STC						0700-0700	DP-60		
STF OES OR ST22			<b>Ritter, Paul</b>	16	<b>E-85</b>	<b>0700-1900</b>	DP-60		
ENG R03 ASAP2346			<b>Ortga, Thomas</b>	3	<b>E-307</b>	<b>0700-1900</b>	DP-60		
ENG R05 E1			<b>Wickstrom, John</b>	3	<b>E-499</b>	<b>0700-1900</b>	DP-60		
ENG R05 E9903			<b>Nerbonne, Will</b>	3	<b>E-510</b>	<b>0700-1900</b>	DP-60		
ENG R06 41			<b>Seibold, Dean</b>	3	<b>E-511</b>	<b>0700-1900</b>	DP-60		
ENG R06 E64			<b>Paul, Johnathan</b>	3	<b>E-512</b>	<b>0700-1900</b>	DP-60		
ENG R03 B327			<b>Anthis, Chris</b>	3	<b>E-518</b>	<b>0700-1900</b>	DP-60		
ENG R03 E310			<b>Smith, Alonzo</b>	3	<b>E-522</b>	<b>0700-1900</b>	DP-60		
ENG R03 08			<b>Jerry Racicot</b>	3	<b>E-523</b>	<b>0700-1900</b>	DP-60		
ENG LAX WILDLAND 21			<b>Dunham, Rusty</b>	3	<b>E-524</b>	<b>0700-1900</b>	DP-60		
ENG CDFS E12			<b>Johnson, Erik</b>	4	<b>E-526</b>	<b>0700-1900</b>	DP-60		
ENG WAX WORLAND E44			<b>Berryman, Erich</b>	4	<b>E-528</b>	<b>0700-1900</b>	DP-60		
CRW FIRESTORM 4 C-14			<b>Pavan, Ben</b>	20	<b>C-14</b>	<b>0700-1900</b>	DP-60		
<b>6. Work Assignments:</b>									
Hold fire within Established control lines									
Mop up 100' in from control lines to eliminate threat to fire-line. Hold and improve Control Lines to mitigate threat of fire escaping									
Scout the Fire for Branch and Division Breaks to validate Control Lines									
Tactical Patrol around structures for the potential of new starts, to prevent structure damage, and alleviate citizen concerns									
<b>7. Special Instructions:</b>									
For affected structures; secure power, water, and gas or LPG.									
Open and close water sources and hydrants slowly in communities of Concow, Paradise, and Magalia									
Personnel may be transported across the Feather River arm of Lake Oroville using the DRW boat. All personnel are required to wear a PFD									
<b>8. Communications</b>									
Name	Ch	Function	Rx Freq	Rx Tone	Tx Freq	Tx Tone	Notes		
BUT SUP T2	1	COMMAND	154.4150	123.0	159.0000	123	TONE 2 SUNSET		
CDF T30	10	TACTICAL	151.3925	192.8 (T16)	151.3925	192.8 (T16)			
CALCORD	15	MEDICAL	156.0750	156.7 (T6)	156.0750	156.7 (T6)			
A/G CDF T18	5	A/G CMD	159.3450	192.8 (T16)	159.3450	192.8 (T16)	A-G COMMAND		
GUARD	16	EMERGENCY	168.6250		168.6250	110.9			
<b>9. Prepared by: Name:</b>		Jim Irving			RESL		Signature: 		
<b>ICS 204</b>		Date/Time: 11/11/2018 2200			Personnel Count: 155				

# ASSIGNMENT LIST (ICS 204 WF)

CONTROLLED UNCLASSIFIED  
INFORMATION//BASIC

<b>1. Incident Name:</b> <p style="text-align: center; font-size: 1.2em;">Camp</p>	<b>2. Operational Period:</b> Date From: 11/12/18    Date To: 11/13/18 Time From: 0700    Time To: 0700	<b>3. Branch</b> <b>Division</b> <p style="text-align: center; font-size: 1.5em;">II                      E</p>
<b>4. Operations Personnel:</b>		Page 2 of 2    Echo

Operations Section Chief: <b>Mark Brown, Josh Bischof (T)</b>	Night Ops: <b>Mark Higgins</b>
Branch Director: <b>Brian Noel</b>	Branch Safety: <b>Sciocchetti</b>
Division/Group Supervisor: <b>Dyer</b>	Air Attack: <b>Jake Sjolund</b>

5. Resources Assigned:		** Resources Below in Bold are 12 Hour **					
Resource Identifier	ALS	LWD	Leader	Personnel	Request #	Hours	Reporting Location
<b>CRW PVT FIRESTORM 5 C-16</b>			<b>Norlie, Mac</b>	20	<b>C-16</b>	<b>0700-1900</b>	<b>DP-60</b>
<b>CRW ORS ASI Arden C-79</b>			<b>Harrison, Jeff</b>	20	<b>C-79</b>	<b>0700-1900</b>	<b>DP-60</b>
<b>CRW ORS West Coast C-82</b>			<b>Mendoza, Juan</b>	20	<b>C-82</b>	<b>0700-1900</b>	<b>DP-60</b>
<b>CRW PVT Grayback C-86</b>			<b>Brewer, Tim</b>	20	<b>C-86</b>	<b>0700-1900</b>	<b>DP-60</b>
<b>CRW PVT Franco C-88</b>			<b>Franco, Noe</b>	20	<b>C-88</b>	<b>0700-1900</b>	<b>DP-60</b>
<b>CRW ORS Grayback C-91</b>			<b>Saeman, Gavin</b>	20	<b>C-91</b>	<b>0700-1900</b>	<b>DP-60</b>
<b>CRW PVT Grayback C-92</b>			<b>Mendoza, Ramiro</b>	20	<b>C-92</b>	<b>0700-1900</b>	<b>DP-60</b>
DOZ CZU 1743			Thomas	2	E-228	0700-0700	DP-60
DOZ PVT E-391			Dodson, Sam	2	E-391	0700-0700	DP-60
<del>DOZ PVT E-392</del> → <b>DAV D</b>			Norton, Tracy	2	E-392	0700-0700	DP-60
W/T PVT E-176			Bryant, Ken	2	E-176	0700-0700	DP-60
<del>W/T PVT E-179</del> → <b>ORVILLE AIRPORT</b>			<b>Hardy</b>	1	<b>E-179</b>	<b>0700-1900</b>	<b>DP-60</b>
EMPF CRUMPACKER	ALS		Crumpacker	1	O-232	0700-0700	DP-60
EMTF MCLEOUD			Mcleoud	1	O-79	0700-0700	DP-60
<b>HEQB (T) MENELEY</b>					<b>0-644</b>		
<b>STG 92546</b>							
<b>DOZ PVT 199</b>							
<b>HIGH VOLUME PUMP</b>					<b>E-470</b>		

**6. Work Assignments:**  
 Hold fire within Established control lines  
 Mop up 100' in from control lines to eliminate threat to fire-line. Hold and improve Control Lines to mitigate threat of fire escaping  
 Scout the Fire for Branch and Division Breaks to validate Control Lines  
 Tactical Patrol around structures for the potential of new starts, to prevent structure damage, and alleviate citizen concerns

**7. Special Instructions:**  
 For affected structures; secure power, water, and gas or LPG.  
 Open and close water sources and hydrants slowly in communities of Concow, Paradise, and Magalia

**W/T PVT E-649**

**8. Communications**

Name	Ch	Function	Rx Freq	Rx Tone	Tx Freq	Tx Tone	Notes
BUT SUP T2	1	COMMAND	154.4150	123.0	159.0000	123	TONE 2 SUNSET
CDF T30	10	TACTICAL	151.3925	192.8 (T16)	151.3925	192.8 (T16)	
CALCORD	15	MEDICAL	156.0750	156.7 (T6)	156.0750	156.7 (T6)	
A/G CDF T18	5	A/G CMD	159.3450	192.8 (T16)	159.3450	192.8 (T16)	A-G COMMAND
GUARD	16	EMERGENCY	168.6250		168.6250	110.9	

**9. Prepared by: Name:** Jim Irving                      RESL                      Signature:

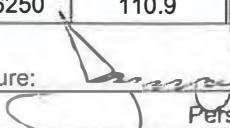
**ICS 204**                      Date/Time: 11/11/2018 2200                      Personnel Count: 151





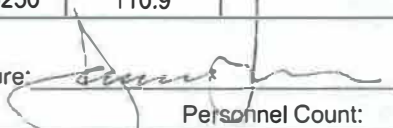
# ASSIGNMENT LIST (ICS 204 WF)

CONTROLLED UNCLASSIFIED  
INFORMATION//BASIC

<b>1. Incident Name:</b> <b>Camp</b>		<b>2. Operational Period:</b> Date From: 11/12/18    Date To: 11/13/18 Time From: 0700    Time To: 0700		<b>3. Branch</b> <b>II</b>		<b>Division</b> <b>G</b>	
<b>4. Operations Personnel:</b>				<b>Page 1 of 1</b>		<b>Golf</b>	
Operations Section Chief: <b>Mark Brown, Josh Bischof (T)</b>			Night Ops: <b>Mark Higgins</b>				
Branch Director: <b>Brian Noel</b>			Branch Safety: <b>Sciocchetti</b>				
Division/Group Supervisor: <b>Ron McLaughlin</b>			Air Attack: <b>Jake Sjolund</b>				
<b>5. Resources Assigned:</b>		<b>** Resources Below in Bold are 12 Hour **</b>					
Resource Identifier	ALS	LWD	Leader	Personnel	Request #	Hours	Reporting Location
STA OES 4815A			Holden, Shawn D	17	E-50	0700-0700	SKYWAYXHONEYRUN
STA XAL 2011A			Evans, Alan	20 +/-	E-75	0700-0700	SKYWAYXHONEYRUN
STA XPL 4132A			Mcmillin, Darren	17	E-53	0700-0700	SKYWAYXHONEYRUN
STA OR ST7	ALS		Kalhoun, Mike	21	E-534	0700-0700	SKYWAYXHONEYRUN
STC						0700-0700	SKYWAYXHONEYRUN
T/F OES 3800			Mike Sawyer	18	E-69	0700-0700	SKYWAYXHONEYRUN
STF						0700-0700	SKYWAYXHONEYRUN
<del>STG TOU 92546</del> → <b>DIV E</b>			Marriott, Eric	37	C-3	0700-0700	SKYWAYXHONEYRUN
<del>W/T PVT E-168</del> → <b>M.R.B.</b>			<b>Brown, Bandon</b>	1	<b>E-168</b>	<b>0700-1900</b>	<b>SKYWAYXHONEYRUN</b>
W/T PVT E-169			Humpherys, Greg	2	E-169	0700-0700	SKYWAYXHONEYRUN
W/T PVT E-177			Andy Oilar	2	E-177	0700-0700	SKYWAYXHONEYRUN
W/T PVT E-189			Mike Kirack	2	E-189	0700-0700	SKYWAYXHONEYRUN
<b>FALM O-607</b>			<b>Scott</b>	2	<b>O-607</b>	<b>0700-1900</b>	<b>SKYWAYXHONEYRUN</b>
<b>FALM O-608</b>					<b>O-608</b>	<b>0700-1900</b>	<b>SKYWAYXHONEYRUN</b>
<b>WIT BTC WT42</b>					<b>E-648</b>		
<b>6. Work Assignments:</b>							
Fall hazard trees and trees that threaten control lines to mitigate the threat of the fire escaping, while maintaining personal safety. Hold and improve Control Lines to mitigate threat of fire escaping. Mop up 100' in from control lines to eliminate threat to fire-line Tactical Patrol around structures for the potential of new starts, to prevent structure damage, and alleviate citizen concerns Scout the Fire for Branch and Division Breaks to validate Control Lines							
<b>7. Special Instructions:</b>							
For affected structures; secure power, water, and gas or LPG. Open and close water sources and hydrants slowly in communities of Concow, Paradise, and Magalia Be aware of and assist with repopulation activities in the area.							
<b>8. Communications</b>							
Name	Ch	Function	Rx Freq	Rx Tone	Tx Freq	Tx Tone	Notes
BUT SUP T2	1	COMMAND	154.4150	123.0	159.0000	123	ZONE 2 SUNSET
CDF T32	12	TACTICAL	151.2425	192.8 (T16)	151.2425	192.8 (T16)	
CALCORD	15	MEDICAL	156.0750	156.7 (T6)	156.0750	156.7 (T6)	
A/G CDF T18	5	A/G CMD	159.3450	192.8 (T16)	159.3450	192.8 (T16)	A-G COMMAND
GUARD	16	EMERGENCY	168.6250		168.6250	110.9	
<b>9. Prepared by: Name:</b>		Jim Irving		RESL		Signature: 	
<b>ICS 204</b>		Date/Time: 11/11/2018 2200		Personnel Count: 139			

# ASSIGNMENT LIST (ICS 204 WF)

CONTROLLED UNCLASSIFIED  
INFORMATION/BASIC

<b>1. Incident Name:</b> <p style="text-align: center; font-size: 1.2em;">Camp</p>		<b>2. Operational Period:</b> Date From: 11/12/18    Date To: 11/13/18 Time From: 0700    Time To: 0700			<b>3. Branch</b> <p style="text-align: center; font-size: 1.5em;">III</p>		<b>Division</b> <p style="text-align: center; font-size: 1.5em;">H</p>	
<b>4. Operations Personnel:</b>					Page 1 of 1		Hotel	
Operations Section Chief: <b>Mark Brown, Josh Bischof (T)</b>				Night Ops: <b>Mark Higgins</b>				
Branch Director: <b>Shane Lauderdale</b>				Branch Safety: <b>Reyes</b>				
Division/Group Supervisor: <b>Mike Hildebrand</b>				Air Attack: <b>Jake Sjolund</b>				
<b>5. Resources Assigned:</b>		<b>** Resources Below in Bold are 12 Hour **</b>						
Resource Identifier	ALS	LWD	Leader	Personnel	Request #	Hours	Reporting Location	
STC XGL 3050C			Blake, Scott	20	E-67	0700-0700	SKYWAYXHONEYRUN	
ENG-GHI-5R → PART OF CAMP T/F 1			<b>Silverman, Ray</b>	<b>3</b>	<b>E-560</b>	<b>0700-1900</b>	<b>SKYWAYXHONEYRUN</b>	
CAMP T/F 1 ADD ENL OPS 8332						0700-0700	SKYWAYXHONEYRUN	
STC						0700-0700	SKYWAYXHONEYRUN	
STC						0700-0700	SKYWAYXHONEYRUN	
STF						0700-0700	SKYWAYXHONEYRUN	
STG LNU 9144G			Murphey, Bret M	33	C-30	0700-0700	SKYWAYXHONEYRUN	
STG						0700-0700	SKYWAYXHONEYRUN	
STG						0700-0700	SKYWAYXHONEYRUN	
STG						0700-0700	SKYWAYXHONEYRUN	
W/T PVT E-182			Wayne Ronner	2	E-182	0700-0700	SKYWAYXHONEYRUN	
W/T PVT E-190			Galen Hainline	2	E-190	0700-0700	SKYWAYXHONEYRUN	
W/T PVT E-657				0	E-657	0700-0700	SKYWAYXHONEYRUN	
MAST						0700-1900	SKYWAYXHONEYRUN	
MAST						0700-1900	SKYWAYXHONEYRUN	
DOE PVT E-647 ← MM								
<b>6. Work Assignments:</b>								
Construct direct line.								
Hold and improve Control Lines to mitigate threat of fire escaping								
Tactical Patrol around structures for the potential of new starts, to prevent structure damage, and alleviate citizen concerns								
<b>7. Special Instructions:</b>								
For affected structures; secure power, water, and gas or LPG.								
Open and close water sources and hydrants slowly in communities of Concow, Paradise, and Magalia								
<b>8. Communications</b>								
Name	Ch	Function	Rx Freq	Rx Tone	Tx Freq	Tx Tone	Notes	
BUT SUP T2	1	COMMAND	154.4150	123.0	159.0000	123	TONE 2 SUNSET	
CDF T34	13	TACTICAL	151.4675	192.8 (T16)	151.4675	192.8 (T16)		
CALCORD	15	MEDICAL	156.0750	156.7 (T6)	156.0750	156.7 (T6)		
A/G CDF T18	5	A/G CMD	159.3450	192.8 (T16)	159.3450	192.8 (T16)	A-G COMMAND	
GUARD	16	EMERGENCY	168.6250		168.6250	110.9		
<b>9. Prepared by: Name:</b>			Jim Irving		RESL			
					Signature: 			
<b>ICS 204</b>		Date/Time: 11/11/2018 2200			Personnel Count: 60			



# ASSIGNMENT LIST (ICS 204 WF)

CONTROLLED UNCLASSIFIED  
INFORMATION//BASIC

<b>1. Incident Name:</b> <p style="text-align: center; font-size: 1.2em;">Camp</p>	<b>2. Operational Period:</b> Date From: 11/12/18    Date To: 11/13/18 Time From: 0700    Time To: 0700	<b>3. Branch</b> <b>Division</b> <p style="text-align: center; font-size: 1.5em;">III                      K</p> <p style="text-align: center;">Page 1 of 2              Kilo</p>
---	---	--

<b>4. Operations Personnel:</b>	
Operations Section Chief: <b>Mark Brown, Josh Bischof (T)</b>	Night Ops: <b>Mark Higgins</b>
Branch Director: <b>Shane Lauderdale</b>	Branch Safety: <b>Reyes</b>
Division/Group Supervisor: <b>Shange Galves</b>	Air Attack: <b>Jake Sjolund</b>

5. Resources Assigned:		** Resources Below in Bold are 12 Hour **					
Resource Identifier	ALS	LWD	Leader	Personnel	Request #	Hours	Reporting Location
STA XCZ 2331A			Walbridge, John	22		0700-0700	DP1
STA XSC 2305A			Robert Bacon	22	E-78	0700-0700	DP1
STB XTE 3250B			Bachmeyer, Mike	16	E-57	0700-0700	DP1
STA OR ST8			Hoskins, Andy	22	E-535	0700-0700	DP1
ENG R03 E61			Stone, Archie	3	E-515	0700-1900	DP1
ENG R05 E9913			Aurentz, James	3	E-517	0700-1900	DP1
ENG R03 07			Hernandez, Ronald	3	E-519	0700-1900	DP1
ENG CDFS 15			Daugherty, John	3	E-530	0700-1900	DP1
ENG SDS 11			Brown, Heath Garrett	3	E-531	0700-1900	DP1
ENG6 PVT DIAMOND 117			Tom Wesley	3	E-532	0700-1900	DP1
STG TGU 9258G			Hannan, Jake	37	C-2	0700-0700	DP1
STG 9221G			Pat Benninghoven	33	C-7	0700-0700	DP1
STG SHU 9242G			Vereb, Josh	36	C-10	0700-0700	DP1
STG <i>SHASTA 21 C-96</i>					<i>C-96</i>	0700-0700	DP1
Crew 1712 O-193			Chris Harley	21	O-193	0700-1900 <i>0700</i>	DP1
DOZ PVT E-390			Grant Yates	3	E-390	0700-0700	DP1
DOZ PVT E-639			Murdock, Mike	0	E-639	0700-0700	DP1
DOZ PVT E-640			Caldwell, Greg	0	E-640	0700-0700	DP1

**6. Work Assignments:**  
 Construct direct line.  
 Hold and improve Control Lines to mitigate threat of fire escaping

**7. Special Instructions:**

8. Communications							
Name	Ch	Function	Rx Freq	Rx Tone	Tx Freq	Tx Tone	Notes
BUT SUP T2	1	COMMAND	154.4150	123.0	159.0000	123	STONE 2 SUNSET
CDF T35	14	TACTICAL	159.3225	192.8 (T16)	159.3225	192.8 (T16)	
CALCORD	15	MEDICAL	156.0750	156.7 (T6)	156.0750	156.7 (T6)	
A/G CDF T18	5	A/G CMD	159.3450	192.8 (T16)	159.3450	192.8 (T16)	A-G COMMAND
GUARD	16	EMERGENCY	168.6250		168.6250	110.9	

**9. Prepared by: Name:** Jim Irving                      RESL  
 Signature:   
**ICS 204**                      Date/Time: 11/11/2018 2200                      Personnel Count: 230

# ASSIGNMENT LIST (ICS 204 WF)

CONTROLLED UNCLASSIFIED  
INFORMATION//BASIC

<b>1. Incident Name:</b> <p style="text-align: center; font-size: 1.2em;">Camp</p>		<b>2. Operational Period:</b> Date From: 11/12/18      Date To: 11/13/18 Time From: 0700              Time To: 0700				<b>3. Branch</b> <p style="text-align: center; font-size: 1.5em;">III</p>		<b>Division</b> <p style="text-align: center; font-size: 1.5em;">K</p>	
<b>4. Operations Personnel:</b>						Page 2 of 2		Kilo	
Operations Section Chief: <b>Mark Brown, Josh Bischof (T)</b>				Night Ops: <b>Mark Higgins</b>					
Branch Director: <b>Shane Lauderdale</b>				Branch Safety: <b>Reyes</b>					
Division/Group Supervisor: <b>Shange Galves</b>				Air Attack: <b>Jake Sjolund</b>					
<b>5. Resources Assigned:</b>		<b>** Resources Below in Bold are 12 Hour **</b>							
Resource Identifier	ALS	LWD	Leader	Personnel	Request #	Hours	Reporting Location		
DOZ						0700-0700	DP1		
DOZ						0700-0700	DP1		
DOZ						0700-0700	DP1		
DOZ						0700-0700	DP1		
DOZ						0700-0700	DP1		
W/T PVT E-171			Becker, Clark	2	E-171	0700-0700	DP1		
W/T PVT E-172			Buck Leter	2	E-172	0700-0700	DP1		
W/T PVT E-173			Al Benson	2	E-173	0700-0700	DP1		
W/T PVT E-178			Tony Martellaro	<b>1</b>	E-178	0700-0700	DP1		
W/T PVT E-186					E-186	0700-0700	DP1		
CHIP - E-649						0700-1900	DP1		
CHIP E-700						0700-1900	DP1		
HEQB						0700-0700	DP1		
EMPF BARKER	ALS		Barker		O-228	0700-0700	DP1		
EMTF BENNER			Benner	1	O-236	0700-0700	DP1		
STL 9160L									
CPW C-96 SHASTA						C-96			
STL 9143L									
<b>6. Work Assignments:</b> Construct direct line. Hold and improve Control Lines to mitigate threat of fire escaping <b>DOZ PVT E-733      W/T PVT E-170</b>									
<b>7. Special Instructions:</b>									
<b>8. Communications</b>									
Name	Ch	Function	Rx Freq	Rx Tone	Tx Freq	Tx Tone	Notes		
BUT SUP T2	1	COMMAND	154.4150	123.0	159.0000	123	TONE 2 SUNSET		
CDF T35	14	TACTICAL	159.3225	192.8 (T16)	159.3225	192.8 (T16)			
CALCORD	15	MEDICAL	156.0750	156.7 (T6)	156.0750	156.7 (T6)			
A/G CDF T18	5	A/G CMD	159.3450	192.8 (T16)	159.3450	192.8 (T16)	A-G COMMAND		
GUARD	16	EMERGENCY	168.6250		168.6250	110.9			
<b>9. Prepared by: Name:</b>		Jim Irving			RESL				
					Signature:				
<b>ICS 204</b>					Date/Time: 11/11/2018 2200		Personnel Count: 8		

# ASSIGNMENT LIST (ICS 204 WF)

CONTROLLED UNCLASSIFIED  
INFORMATION//BASIC

<b>1. Incident Name:</b> <p style="text-align: center; font-size: 1.2em;">Camp</p>	<b>2. Operational Period:</b> Date From: 11/12/18    Date To: 11/13/18 Time From: 0700    Time To: 0700	<b>3. Branch</b> <b>Division</b> <p style="text-align: center; font-size: 1.5em;">III                      N</p>
<b>4. Operations Personnel:</b>		Page 1 of 2    November

Operations Section Chief: <b>Mark Brown, Josh Bischof (T)</b>	Night Ops: <b>Mark Higgins</b>
Branch Director: <b>Shane Lauderdale</b>	Branch Safety: <b>Reyes</b>
Division/Group Supervisor: <b>Neely / Whisler (T)</b>	Air Attack: <b>Jake Sjolund</b>

5. Resources Assigned:		** Resources Below in Bold are 12 Hour **					
Resource Identifier	ALS	LWD	Leader	Personnel	Request #	Hours	Reporting Location
STA OES 2808A			Robert Lacroix	22	E-64	0700-0700	SKYWAYXPONDEROSA
STA OES 2809A			Vandever, Erick	16	E-79	0700-0700	SKYWAYXPONDEROSA
STA OES 4816A			Morris, Kevin	17	E-51	0700-0700	SKYWAYXPONDEROSA
STA						0700-0700	SKYWAYXPONDEROSA
STA OR ST13			Nees, Mark	22	E-540	0700-0700	SKYWAYXPONDEROSA
STA OR ST14			Beyers, Scott	22	E-541	0700-0700	SKYWAYXPONDEROSA
STA OR ST15			Smythe, Eric	22	E-542	0700-0700	SKYWAYXPONDEROSA
STC CNT 2310C			Kuempel, Shanna	17	E-107	0700-0700	SKYWAYXPONDEROSA
STC XSH 3150C			Dennis Beck	18	E-20	0700-0700	SKYWAYXPONDEROSA
STC XTB 4236C			Mcdonald, Ed	22	E-60	0700-0700	SKYWAYXPONDEROSA
T/F XST 4208			Jeff Serpa	20	E-128	0700-0700	SKYWAYXPONDEROSA
BUTTE T/F 1						0700-0700	SKYWAYXPONDEROSA
ENG CHI 2R <span style="color: red;">ODD</span>			Andrews, Steve	3	E-268	0700-0700	SKYWAYXPONDEROSA
STG TGU 9252G			Thomas, Luke	35	C-1	0700-0700	SKYWAYXPONDEROSA
STG						0700-0700	SKYWAYXPONDEROSA
STG						0700-0700	SKYWAYXPONDEROSA
STG						0700-0700	SKYWAYXPONDEROSA
CRW ORS Grizzly C-80			Delfin, Jose	20	C-80	0700-0700	SKYWAYXPONDEROSA

**6. Work Assignments:**  
 Construct direct line  
 Hold and improve Control Lines to mitigate threat of fire escaping  
 Tactical Patrol around structures for the potential of new starts, to prevent structure damage, and alleviate citizen concerns

**7. Special Instructions:**  
 Watch out for abandon mines within the area, particularly just north of the branch break

8. Communications							
Name	Ch	Function	Rx Freq	Rx Tone	Tx Freq	Tx Tone	Notes
BUT SUP T2	1	COMMAND	154.4150	123.0	159.0000	123	tone 2 SUNSET
CDF T27	7	TACTICAL	159.3075	192.8 (T16)	159.3075	192.8 (T16)	
CALCORD	15	MEDICAL	156.0750	156.7 (T6)	156.0750	156.7 (T6)	
A/G CDF T18	5	A/G CMD	159.3450	192.8 (T16)	159.3450	192.8 (T16)	A-G COMMAND
GUARD	16	EMERGENCY	168.6250		168.6250	110.9	

<b>9. Prepared by: Name:</b>	Jim Irving	RESL	Signature:
<b>ICS 204</b>	Date/Time: 11/11/2018 2200	Personnel Count: 256	



# ASSIGNMENT LIST (ICS 204 WF)

CONTROLLED UNCLASSIFIED  
INFORMATION/BASIC

<b>1. Incident Name:</b> <p style="text-align: center; font-size: 1.2em;">Camp</p>	<b>2. Operational Period:</b> Date From: 11/12/18      Date To: 11/13/18 Time From: 0700              Time To: 0700	<b>3. Branch</b> <b>Division</b> <p style="text-align: center; font-size: 1.5em;">III                                  N</p>
---	---	---

<b>4. Operations Personnel:</b>		<b>Page 2 of 2</b> <b>November</b>
Operations Section Chief: <b>Mark Brown, Josh Bischof (T)</b>	Night Ops: <b>Mark Higgins</b>	
Branch Director: <b>Shane Lauderdale</b>	Branch Safety: <b>Reyes</b>	
Division/Group Supervisor: <b>Neely / Whisler (T)</b>	Air Attack: <b>Jake Sjolund</b>	

<b>5. Resources Assigned:</b>		** Resources Below in Bold are 12 Hour **					
Resource Identifier	ALS	LWD	Leader	Personnel	Request #	Hours	Reporting Location
CRW ORS Grizzly C-81			Tj Hiner	20	C-81	0700-0700	SKYWAY/PONDEROS
CRW ORS Orozco C-87			Carlos Ontiveros	20	C-87	0700-0700	SKYWAY/PONDEROS
CRW ORS Franco C-93			Franco, Florencio	20	C-93	0700-0700	SKYWAY/PONDEROS
STL						0700-0700	SKYWAY/PONDEROS
DOZ PVT E-414			Hatler, Tim	2	E-414	0700-0700	SKYWAY/PONDEROS
DOZ PVT E-415			Simunaci	2	E-415	0700-0700	SKYWAY/PONDEROS
DOZ PVT E-418			Dale Edwards	2	E-418	0700-0700	SKYWAY/PONDEROS
W/T PVT E-174				0	E-174	0700-0700	SKYWAY/PONDEROS
W/T PVT E-183					E-183	0700-0700	SKYWAY/PONDEROS
W/T PVT E-184					E-184	0700-0700	SKYWAY/PONDEROS
W/T PVT E-191			John Hay	2	E-191	0700-0700	SKYWAY/PONDEROS
W/T PVT E-192			Jesse Holden	2	E-192	0700-0700	SKYWAY/PONDEROS
EXC PVT E-664				0	E-664	0700-0700	SKYWAY/PONDEROS
EXC PVT E-666				0	E-666	0700-0700	SKYWAY/PONDEROS
HEQB HALE O-273			Hale, Jordan	1	O-273	0700-0700	SKYWAY/PONDEROS
<b>FALM O-304</b>				2	<b>O-304</b>	0700-1900	SKYWAY/PONDEROS
9150C							
9434G							

**6. Work Assignments:**  
 Construct direct line  
 Hold and improve Control Lines to mitigate threat of fire escaping  
 Tactical Patrol around structures for the potential of new starts, to prevent structure damage, and alleviate citizen concerns

**7. Special Instructions:**  
 Watch out for abandon mines within the area, particularly just north of the branch break

<b>8. Communications</b>							
Name	Ch	Function	Rx Freq	Rx Tone	Tx Freq	Tx Tone	Notes
BUT SUP T2	1	COMMAND	154.4150	123.0	159.0000	123	TONE 2 SUNSET
CDF T27	7	TACTICAL	159.3075	192.8 (T16)	159.3075	192.8 (T16)	
CALCORD	15	MEDICAL	156.0750	156.7 (T6)	156.0750	156.7 (T6)	
A/G CDF T18	5	A/G CMD	159.3450	192.8 (T16)	159.3450	192.8 (T16)	A-G COMMAND
GUARD	16	EMERGENCY	168.6250		168.6250	110.9	

**9. Prepared by: Name:**                      Jim Irving    RESL    Signature:

**Personnel Count:**      73

**ICS 204**

Date/Time: 11/11/2018 2200















# ASSIGNMENT LIST (ICS 204 WF)

CONTROLLED UNCLASSIFIED  
INFORMATION/BASIC

<b>1. Incident Name:</b> <p style="text-align: center; font-size: 1.2em;">Camp</p>	<b>2. Operational Period:</b> Date From: 11/12/18      Date To: 11/13/18 Time From: 0700              Time To: 0700	<b>3. Branch</b> <b>Division</b> <p style="text-align: center; font-size: 1.5em;">VI                                  U</p>
---	---	--

<b>4. Operations Personnel:</b>		Page 2 of 3      Uniform
Operations Section Chief: <b>Mark Brown, Josh Bischof (T)</b>	Night Ops: <b>Mark Higgins</b>	
Branch Director: <b>Aaron Latta</b>	Branch Safety:	
Division/Group Supervisor: <b>Dajana Totten</b>	Air Attack: <b>Jake Sjolund</b>	

5. Resources Assigned:	** Resources Below In Bold are 12 Hour **						Hours	Reporting Location
Resource Identifier	ALS	LWD	Leader	Personnel	Request #			
STG						0700-0700	Hwy 70/Jarbo Gap	
STG						0700-0700	Hwy 70/Jarbo Gap	
STG						0700-0700	Hwy 70/Jarbo Gap	
STL						0700-0700	Hwy 70/Jarbo Gap	
STL						0700-0700	Hwy 70/Jarbo Gap	
DOZ PVT E-646			<b>Strtatham, Kenny</b>	<b>2</b>	<b>E-646</b>	0700-0700	Hwy 70/Jarbo Gap	
DOZ						0700-0700	Hwy 70/Jarbo Gap	
W/T PVT E-659			<b>Lanza, Steve</b>	<b>2</b>	<b>E-659</b>	0700-0700	Hwy 70/Jarbo Gap	
W/T						0700-0700	Hwy 70/Jarbo Gap	
W/T						0700-0700	Hwy 70/Jarbo Gap	
W/T						0700-0700	Hwy 70/Jarbo Gap	
W/T						0700-0700	Hwy 70/Jarbo Gap	
W/T						0700-0700	Hwy 70/Jarbo Gap	
W/T						0700-0700	Hwy 70/Jarbo Gap	
MAST						<b>0700-1900</b>	<b>Hwy 70/Jarbo Gap</b>	
MAST						<b>0700-1900</b>	<b>Hwy 70/Jarbo Gap</b>	
MAST						<b>0700-1900</b>	<b>Hwy 70/Jarbo Gap</b>	
MAST						<b>0700-1900</b>	<b>Hwy 70/Jarbo Gap</b>	
FOBS						<b>0700-1900</b>	<b>Hwy 70/Jarbo Gap</b>	

**6. Work Assignments:**  
 Construct contingency line  
 Scout the Fire for Branch and Division Breaks to validate Control Lines  
 Prepare lines for implementation of firing plan

**7. Special Instructions:**  
 Watch out for abandon mines within the area, particularly just north of the branch break  
*DOZ PVT E-204 ← DIV 00*  
*DOZ PVT E-211 ← DIV 00*

**8. Communications**

Name	Ch	Function	Rx Freq	Rx Tone	Tx Freq	Tx Tone	Notes
BUT SUP T2	1	COMMAND	154.4150	123.0	159.0000	123	TONE 2 SUNSET
CDF T29	9	TACTICAL	151.3475	192.8 (T16)	151.3475	192.8 (T16)	
CALCORD	15	MEDICAL	156.0750	156.7 (T6)	156.0750	156.7 (T6)	
A/G CDF T18	5	A/G CMD	159.3450	192.8 (T16)	159.3450	192.8 (T16)	A-G COMMAND
GUARD	16	EMERGENCY	168.6250		168.6250	110.9	

**9. Prepared by: Name:** Jim Irving                      RESL  
 Signature:

ICS 204                      Date/Time: 11/11/2018 2200                      Personnel Count: 4



# ASSIGNMENT LIST (ICS 204 WF)

CONTROLLED UNCLASSIFIED  
INFORMATION/BASIC

<b>1. Incident Name:</b> <p style="text-align: center; font-size: 1.2em;">Camp</p>	<b>2. Operational Period:</b> Date From: 11/12/18      Date To: 11/13/18 Time From: 0700              Time To: 0700	<b>3. Branch</b> <b>Division</b> <p style="text-align: center; font-size: 1.5em;">VI                                  Y</p>
---	---	--

<b>4. Operations Personnel:</b>		<b>Page 1 of 3</b> <b>Yankee</b>
Operations Section Chief: <b>Mark Brown, Josh Bischof (T)</b>	Night Ops: <b>Mark Higgins</b>	
Branch Director: <b>Aaron Latta</b>	Branch Safety:	
Division/Group Supervisor: <b>James Allen</b>	Air Attack: <b>Jake Sjolund</b>	

5. Resources Assigned:	** Resources Below in Bold are 12 Hour **						
Resource Identifier	ALS	LWD	Leader	Personnel	Request #	Hours	Reporting Location
STC						0700-0700	Hwy 70/Pulga
STC						0700-0700	Hwy 70/Pulga
STC						0700-0700	Hwy 70/Pulga
STF OR ST20			Lighty, Lance	16	E-577	0700-0700	Hwy 70/Pulga
<b>ENG MTR 5161</b>			<b>Cullinance, Adam</b>	<b>3</b>	<b>E-594</b>	<b>0700-1900</b>	<b>Hwy 70/Pulga</b>
<b>ENG MTR 5162</b>			<b>Cummings, Josh</b>	<b>3</b>	<b>E-595</b>	<b>0700-1900</b>	<b>Hwy 70/Pulga</b>
STG BTU 9210G			Sitter, Benjamin	33	C-97	0700-0700	Hwy 70/Pulga
STG						0700-0700	Hwy 70/Pulga
STG						0700-0700	Hwy 70/Pulga
STG						0700-0700	Hwy 70/Pulga
<b>CRW TYPE 2</b>						<b>0700-1900</b>	<b>Hwy 70/Pulga</b>
<b>CRW TYPE 2</b>						<b>0700-1900</b>	<b>Hwy 70/Pulga</b>
DOZ PVT E-197			Pat Medeiros	2	E-197	0700-0700	Hwy 70/Pulga
DOZ PVT E-202					E-202	0700-0700	Hwy 70/Pulga
DOZ PVT E-205			Madison, Larry	3	E-205	0700-0700	Hwy 70/Pulga
DOZ PVT E-206			Pate Wilson	2	E-206	0700-0700	Hwy 70/Pulga
DOZ PVT E-209			Andy Oilar	2	E-209	0700-0700	Hwy 70/Pulga
DOZ PVT E-218			Jake Kaws	2	E-218	0700-0700	Hwy 70/Pulga

**6. Work Assignments:**  
 Fall hazard trees and trees that threaten control lines to mitigate the threat of the fire escaping, while maintaining personal safety.  
 Hold fire within Established control lines  
 Hold and improve Control Lines to mtigate threat of fire escaping  
 Prepare lines for implementation of firing plan

**7. Special Instructions:**  
DOZ 2342

8. Communications							
Name	Ch	Function	Rx Freq	Rx Tone	Tx Freq	Tx Tone	Notes
BUT SUP T2	1	COMMAND	154.4150	123.0	159.0000	123	TONE 2 SUNSET
CDF T31	11	TACTICAL	159.3825	192.8 (T16)	159.3825	192.8 (T16)	
CALCORD	15	MEDICAL	156.0750	156.7 (T6)	156.0750	156.7 (T6)	
A/G CDF T18	5	A/G CMD	159.3450	192.8 (T16)	159.3450	192.8 (T16)	A-G COMMAND
GUARD	16	EMERGENCY	168.6250		168.6250	110.9	

**9. Prepared by: Name:**                      Jim Irving                                  RESL

Signature:                      Personnel Count: 66

**ICS 204**

Date/Time: 11/11/2018 2200











# ASSIGNMENT LIST (ICS 204 WF)

CONTROLLED UNCLASSIFIED  
INFORMATION//BASIC

<b>1. Incident Name:</b> <p style="text-align: center; font-size: 1.2em;">Camp</p>	<b>2. Operational Period:</b> Date From: 11/12/18    Date To: 11/13/18 Time From: 0700    Time To: 0700	<b>3. Branch</b> <b>Division</b> <p style="text-align: center; font-size: 1.5em;">X                      MM</p>
---	---	--

<b>4. Operations Personnel:</b>		<b>Page 2 of 2</b>	<b>Mike-Mike</b>
Operations Section Chief: <b>Mark Brown, Josh Bischof (T)</b>		Night Ops: <b>Mark Higgins</b>	
Branch Director: <b>Gus Boston, Deano Esaess (T)</b>		Branch Safety: <b>Zimmerman</b>	
Division/Group Supervisor: <b>Matt Prentiss</b>		Air Attack: <b>Jake Sjolund</b>	

<b>5. Resources Assigned:</b>		<b>** Resources Below in Bold are 12 Hour **</b>					
Resource Identifier	ALS	LWD	Leader	Personnel	Request #	Hours	Reporting Location
W/T <b>-187</b>						0700-0700	Brush Creek Fire Station
CHP <b>E-727</b>							<b>Brush Creek Fire Station</b>
CHP <b>E-730</b>							<b>Brush Creek Fire Station</b>
<b>MAST</b>						<b>0700-1900</b>	<b>Brush Creek Fire Station</b>
<b>MAST</b>						<b>0700-1900</b>	<b>Brush Creek Fire Station</b>
<b>MAST</b>						<b>0700-1900</b>	<b>Brush Creek Fire Station</b>
<b>MAST</b>						<b>0700-1900</b>	<b>Brush Creek Fire Station</b>
HEQB						0700-0700	Brush Creek Fire Station
HEQB						0700-0700	Brush Creek Fire Station
HEQB						0700-0700	Brush Creek Fire Station
HEQB						0700-0700	Brush Creek Fire Station
EMPF MCCARTHY	ALS		Matthew McCarthy	1	O-230	0700-0700	Brush Creek Fire Stati
EMTF CHAMBERLIN			Wes, Chamberlin	1	O-234	0700-0700	Brush Creek Fire Stati

**6. Work Assignments:**  
 Scout the Fire for Branch and Division Breaks to validate Control Lines  
 construct contingency line  
 Prepare Structure Defense Plan

**7. Special Instructions:**

<b>8. Communications</b>							
Name	Ch	Function	Rx Freq	Rx Tone	Tx Freq	Tx Tone	Notes
BUT SUP T2	1	COMMAND	154.4150	123.0	159.0000	123	TONE 2 SUNSET
CDF T32	12	TACTICAL	151.2425	192.8 (T16)	151.2425	192.8 (T16)	
CALCORD	15	MEDICAL	156.0750	156.7 (T6)	156.0750	156.7 (T6)	
A/G CDF T18	5	A/G CMD	159.3450	192.8 (T16)	159.3450	192.8 (T16)	A-G COMMAND
GUARD	16	EMERGENCY	168.6250		168.6250	110.9	

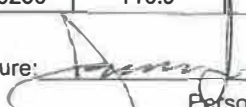
**9. Prepared by: Name:** Jim Irving                      RESL

Signature:

ICS 204                      Date/Time: 11/11/2018 2200                      Personnel Count: 2

# ASSIGNMENT LIST (ICS 204 WF)

CONTROLLED UNCLASSIFIED  
INFORMATION//BASIC

<b>1. Incident Name:</b>		<b>2. Operational Period:</b>				<b>3. Branch</b>		<b>Division</b>	
<b>Camp</b>		Date From: 11/12/18	Date To: 11/13/18	<b>X</b>		<b>OO</b>			
		Time From: 0700	Time To: 0700			Page 1 of 3		Oscar-Oscar	
<b>4. Operations Personnel:</b>									
Operations Section Chief: <b>Mark Brown, Josh Bischof (T)</b>					Night Ops: <b>Mark Higgins</b>				
Branch Director: <b>Gus Boston, Deano Esaess (T)</b>					Branch Safety: <b>Zimmerman</b>				
Division/Group Supervisor: <b>PAT PURVIS</b>					Air Attack: <b>Jake Sjolund</b>				
<b>5. Resources Assigned:</b>									
** Resources Below in Bold are 12 Hour **									
Resource Identifier	ALS	LWD	Leader	Personnel	Request #	Hours	Reporting Location		
STC LNU 9141C			Miliosovich, Steve	19	E-150	0700-0700	Brush Creek Fire Station		
STC SKU 9260			Scott Tavalero	17	E-149	0700-0700	Brush Creek Fire Station		
<b>STC MDF 3631C</b>			<b>Preston, Patrick H</b>	24	<b>E-43</b>	<b>0700-1900</b>	<b>Brush Creek Fire Station</b>		
<b>STC TNF 4660C</b>			<b>ockdale, Zachariah Steph</b>	27	<b>E-45</b>	<b>0700-1900</b>	<b>Brush Creek Fire Station</b>		
<del>STG MMU 9424G</del> → <b>DIV QQ</b>			Ed Barajas	33	C-43	0700-0700	Brush Creek Fire Station		
<b>STG 4400G</b>					<b>0700-1900</b>	0700-0700	Brush Creek Fire Station		
<b>CRW ENF IRON MOUNTAIN C-15</b>			<b>Breitwieser, Kevin</b>	16	<b>C-15</b>	<b>0700-1900</b>	<b>Brush Creek Fire Station</b>		
<del>BOZ NEU 2342</del> → <b>DIV Y</b>			Kennedy, Joseph	2	E-5	0700-0700	Brush Creek Fire Station		
<b>DOZ PNF 1</b>			<b>Sibbalad, Scott</b>	2	<b>E-74</b>	<b>0700-1900</b>	<b>Brush Creek Fire Station</b>		
DOZ PVT E-24			Lassen, Steve	2	E-24	0700-0700	Brush Creek Fire Station		
DOZ PVT E-26			Alexander, Heather	2	E-26	0700-0700	Brush Creek Fire Station		
DOZ PVT E-27			Fields, Bruce	2	E-27	0700-0700	Brush Creek Fire Station		
DOZ PVT E-200				2	E-200	0700-0700	Brush Creek Fire Station		
<del>DOZ PVT E-204</del> → <b>DIV U</b>			Douglas Munjar	2	E-204	0700-0700	Brush Creek Fire Station		
<del>BOZ PVT E-211</del> → <b>DIV U</b>			Michael Kirack	2	E-211	0700-0700	Brush Creek Fire Station		
<b>DOZ PVT E-216</b>			<b>Graham, Jeff</b>	2	<b>E-216</b>	<b>0700-1900</b>	<b>Brush Creek Fire Station</b>		
DOZ PVT E-227			Steven Hill	2	E-227	0700-0700	Brush Creek Fire Station		
DOZ PVT E-393			Salinas, Tony	2	E-393	0700-0700	Brush Creek Fire Station		
<b>6. Work Assignments:</b>									
Scout the Fire for Branch and Division Breaks to validate Control Lines									
Construct contingency line									
Prepare Structure Defense Plan									
<b>7. Special Instructions:</b>									
Personnel may be transported across the Feather River arm of Lake Oroville using the DRW boat. All personnel are required to wear a PFD while in the watercraft.									
<b>CRW2 C-78 ← QQ</b>									
<b>8. Communications</b>									
Name	Ch	Function	Rx Freq	Rx Tone	Tx Freq	Tx Tone	Notes		
BUT SUP T2	1	COMMAND	154.4150	123.0	159.0000	123	TONE 2 SUNSET		
CDF T34	13	TACTICAL	151.4675	192.8 (T16)	151.4675	192.8 (T16)			
CALCORD	15	MEDICAL	156.0750	156.7 (T6)	156.0750	156.7 (T6)			
A/G CDF T18	5	A/G CMD	159.3450	192.8 (T16)	159.3450	192.8 (T16)	A-G COMMAND		
GUARD	16	EMERGENCY	168.6250		168.6250	110.9			
<b>9. Prepared by: Name:</b>									
Jim Irving			RESL						
Signature: 									
<b>ICS 204</b>		Date/Time: 11/11/2018 2200				Personnel Count: 158			

NIMS IAP

CONTROLLED UNCLASSIFIED INFORMATION//BASIC

# ASSIGNMENT LIST (ICS 204 WF)

CONTROLLED UNCLASSIFIED  
INFORMATION//BASIC

<b>1. Incident Name:</b> <p style="text-align: center; font-size: 1.2em;">Camp</p>		<b>2. Operational Period:</b> Date From: 11/12/18    Date To: 11/13/18 Time From: 0700    Time To: 0700				<b>3. Branch</b> <p style="text-align: center; font-size: 1.5em;">X</p>		<b>Division</b> <p style="text-align: center; font-size: 1.5em;">OO</p>	
<b>4. Operations Personnel:</b>						Page 2 of 3		Oscar-Oscar	
Operations Section Chief: <b>Mark Brown, Josh Bischof (T)</b>				Night Ops: <b>Mark Higgins</b>					
Branch Director: <b>Gus Boston, Deano Esaess (T)</b>				Branch Safety: <b>Zimmerman</b>					
Division/Group Supervisor: <i>PAT FORVIS</i>				Air Attack: <b>Jake Sjolund</b>					
<b>5. Resources Assigned:</b>		<b>** Resources Below in Bold are 12 Hour **</b>							
Resource Identifier	ALS	LWD	Leader	Personnel	Request #	Hours	Reporting Location		
DOZ PVT E-394				2	E-394	0700-0700	Brush Creek Fire Station		
DOZ PVT E-395			Offerall, Travis	2	E-395	0700-0700	Brush Creek Fire Station		
DOZ PVT E-396			Slotte, Jessie	2	E-396	0700-0700	Brush Creek Fire Station		
DOZ PVT E-397			Larue, Clint	2	E-397	0700-0700	Brush Creek Fire Station		
DOZ PVT E-408				2	E-408	0700-0700	Brush Creek Fire Station		
DOZ PVT E-409				2	E-409	0700-0700	Brush Creek Fire Station		
DOZ PVT E-410				2	E-410	0700-0700	Brush Creek Fire Station		
<del>W/F EMB WT3</del> → 12 HRS				2		0700-0700	Brush Creek Fire Station		
W/T PVT E-599			Ledbetter, Randy	2	E-599	0700-0700	Brush Creek Fire Station		
W/T PVT E-605			Richie Vargas	2	E-605	0700-0700	Brush Creek Fire Station		
W/T						0700-0700	Brush Creek Fire Station		
W/T						0700-0700	Brush Creek Fire Station		
CHP E-7, 26							Brush Creek Fire Station		
CHP E-128							Brush Creek Fire Station		
MAST						0700-1900	Brush Creek Fire Station		
MAST						0700-1900	Brush Creek Fire Station		
HEQB LINGEN O-272			Lingen, Doug	1	O-272	0700-0700	Brush Creek Fire Station		
HEQB <i>EVENSONS(T)</i>						0700-0700	Brush Creek Fire Station		
<b>6. Work Assignments:</b>									
Scout the Fire for Branch and Division Breaks to validate Control Lines									
Construct contingency line									
Prepare Structure Defense Plan									
<b>7. Special Instructions:</b>									
Personnel may be transported across the Feather River arm of Lake Oroville using the DRW boat. All personnel are required to wear a PFD while in the watercraft.									
<b>8. Communications</b>									
Name	Ch	Function	Rx Freq	Rx Tone	Tx Freq	Tx Tone	Notes		
BUT SUP T2	1	COMMAND	154.4150	123.0	159.0000	123	TONE 2 SUNSET		
CDF T34	13	TACTICAL	151.4675	192.8 (T16)	151.4675	192.8 (T16)			
CALCORD	15	MEDICAL	156.0750	156.7 (T6)	156.0750	156.7 (T6)			
A/G CDF T18	5	A/G CMD	159.3450	192.8 (T16)	159.3450	192.8 (T16)	A-G COMMAND		
GUARD	16	EMERGENCY	168.6250		168.6250	110.9			
<b>9. Prepared by: Name:</b>		Jim Irving			RESL		Signature:		
<b>ICS 204</b>		Date/Time: 11/11/2018 2200			Personnel Count: 21				





# ASSIGNMENT LIST (ICS 204 WF)

CONTROLLED UNCLASSIFIED  
INFORMATION//BASIC

<b>1. Incident Name:</b> <p style="text-align: center; font-size: 1.2em;">Camp</p>		<b>2. Operational Period:</b> Date From: 11/12/18    Date To: 11/13/18 Time From: 0700    Time To: 0700				<b>3. Branch</b> <b>Division</b> <p style="text-align: center; font-size: 1.5em;">X                      QQ</p>	
						Page 1 of 4    Quebec-Quebec	
<b>4. Operations Personnel:</b>							
Operations Section Chief: <b>Mark Brown, Josh Bischof (T)</b>				Night Ops: <b>Mark Higgins</b>			
Branch Director: <b>Gus Boston, Deano Esaess (T)</b>				Branch Safety: <b>Zimmerman</b>			
Division/Group Supervisor: <b>Jeff Edson</b> <i>PON WELCOME(T)</i>				Air Attack: <b>Jake Sjolund</b>			
<b>5. Resources Assigned:</b>		<b>** Resources Below in Bold are 12 Hour **</b>					
Resource Identifier	ALS	LWD	Leader	Personnel	Request #	Hours	Reporting Location
STA OR ST9			Bucich, Darren	22	E-536	0700-0700	Brush Creek Fire Station
STA OR ST11			Parker, Andy	22	E-538	0700-0700	Brush Creek Fire Station
STC TGU 9250C			Magana, Gerry	19	E-3	0700-0700	Brush Creek Fire Station
STC LNU 9140C			Joe Petersen	<del>23</del> <i>18</i>	E-17	0700-0700	Brush Creek Fire Station
STC LNF 3615C			Shannon Prather	23	E-44	0700-0700	Brush Creek Fire Station
STC XSJ 4183C			Ingrum, Dave	18 +/-	E-61	0700-0700	Brush Creek Fire Station
STC XSN 2396C			Elson, Michael	<del>18</del> <i>24</i>	E-62	0700-0700	Brush Creek Fire Station
STC SRF 2600C			Stokesberry, Thomas B	26	E-328	0700-1900	Brush Creek Fire Station
ENG3 R05 E 9			Jeff Campbell	5	E-298	0700-1900	Brush Creek Fire Station
ENG WNP ENG 2			Erik Borlaug	4	E-299	0700-1900	Brush Creek Fire Station
ENG PVT WILDFIRE 316			Rosengarten, Murray	3	E-306	0700-1900	Brush Creek Fire Station
ENG PVT AMERICAN E17			Stanovich, Jeff	3	E-308	0700-1900	Brush Creek Fire Station
ENG NWS ENGINE 11			Crandall, Brandon	4	E-320	0700-1900	Brush Creek Fire Station
ENG NWS E324			Schultz, Rod	4	E-321	0700-1900	Brush Creek Fire Station
ENG3 HTF E 316			Jason Lyons	3	E-495	0700-1900	Brush Creek Fire Station
ENG PVT BE-575			Campbell, August	3	E-500	0700-1900	Brush Creek Fire Station
ENG AZ-GID - E4664			Pedraza, Ruben	3	E-516	0700-1900	Brush Creek Fire Station
ENG3 SHF E 343			Adam Koller	5	E-525	0700-1900	Brush Creek Fire Station
<b>6. Work Assignments:</b> Scout the Fire for Branch and Division Breaks to validate Control Lines Construct contingency line Prepare Structure Defense Plan							
<b>7. Special Instructions:</b> <i>DOZ 2440 = 0700-1900</i>							
<b>8. Communications</b>							
Name	Ch	Function	Rx Freq	Rx Tone	Tx Freq	Tx Tone	Notes
BUT SUP T2	1	COMMAND	154.4150	123.0	159.0000	123	TONE 2 SUNSET
CDF T30	10	TACTICAL	151.3925	192.8 (T16)	151.3925	192.8 (T16)	
CALCORD	15	MEDICAL	156.0750	156.7 (T6)	156.0750	156.7 (T6)	
A/G CDF T18	5	A/G CMD	159.3450	192.8 (T16)	159.3450	192.8 (T16)	A-G COMMAND
GUARD	16	EMERGENCY	168.6250		168.6250	110.9	
<b>9. Prepared by: Name:</b>		Jim Irving		RESL		Signature:	
ICS 204		Date/Time: 11/11/2018 2200				Personnel Count: 206	

# ASSIGNMENT LIST (ICS 204 WF)

CONTROLLED UNCLASSIFIED  
INFORMATION//BASIC

<b>1. Incident Name:</b> <p style="text-align: center; font-size: 1.2em;">Camp</p>	<b>2. Operational Period:</b> Date From: 11/12/18    Date To: 11/13/18 Time From: 0700    Time To: 0700	<b>3. Branch</b> <b>Division</b> <p style="text-align: center; font-size: 1.5em;">X                      QQ</p>
---	---	--

Page 2 of 4    Quebec-Quebec

<b>4. Operations Personnel:</b> Operations Section Chief: <b>Mark Brown, Josh Bischof (T)</b> Branch Director: <b>Gus Boston, Deano Esaess (T)</b> Division/Group Supervisor: <b>Jeff Edson</b> <i>RON WELCOME (T)</i>	Night Ops: <b>Mark Higgins</b> Branch Safety: <b>Zimmerman</b> Air Attack: <b>Jake Sjolund</b>
---	--

5. Resources Assigned:		** Resources Below In Bold are 12 Hour **					
Resource Identifier	ALS	LWD	Leader	Personnel	Request #	Hours	Reporting Location
ENG R05 623			<b>Paula Holter</b>	<b>3</b>	<b>E-527</b>	<b>0700-1900</b>	Brush Creek Fire Station
ENG R05 622			<b>Eric Randolph</b>	<b>3</b>	<b>E-529</b>	<b>0700-1900</b>	Brush Creek Fire Station
ENG CDFS BRUSH 51			<b>Abramson, Eric</b>	<b>3</b>	<b>E-533</b>	<b>0700-1900</b>	Brush Creek Fire Station
STG <i>9424G ← DIV 00</i>						0700-0700	Brush Creek Fire Station
STG <i>9122G ← DIV MM</i>						0700-0700	Brush Creek Fire Station
<del>GRW-ORS Birrueta C-77</del> <i>→ MM</i>			<b>Birrueta, Toni</b>	<b>20</b>	<b>C-77</b>	<b>0700-1900</b>	Brush Creek Fire Station
<del>GRW-ORS Birrueta C-78</del> <i>→ DIV 00</i>			<b>Christan, Juarez</b>	<b>20</b>	<b>C-78</b>	<b>0700-1900</b>	Brush Creek Fire Station
DOZ PVT E-23			<b>Ulsh, Dale</b>	<b>2</b>	<b>E-23</b>	<b>0700-0700</b>	Brush Creek Fire Station
DOZ PVT E-25			<b>George Wurlirer</b>	<b>2</b>	<b>E-25</b>	<b>0700-0700</b>	Brush Creek Fire Station
DOZ PVT E-196			<b>George Wulitzar</b>	<b>2</b>	<b>E-196</b>	<b>0700-0700</b>	Brush Creek Fire Station
DOZ PVT E-201			<b>Charlie Ciganovich</b>	<b>2</b>	<b>E-201</b>	<b>0700-0700</b>	Brush Creek Fire Station
DOZ PVT E-208			<b>Browning, Pat</b>	<b>2</b>	<b>E-208</b>	<b>0700-0700</b>	Brush Creek Fire Station
DOZ PVT E-217			<b>Mader, Al</b>	<b>2</b>	<b>E-217</b>	<b>0700-0700</b>	Brush Creek Fire Station
DOZ PVT E-232			<b>Sizemore, Cody</b>	<b>2</b>	<b>E-232</b>	<b>0700-0700</b>	Brush Creek Fire Station
DOZ PVT E-387			<b>Jared Silva</b>	<b>2</b>	<b>E-387</b>	<b>0700-0700</b>	Brush Creek Fire Station
DOZ PVT E-399			<b>Jones, Robert</b>	<b>3</b>	<b>E-399</b>	<b>0700-0700</b>	Brush Creek Fire Station
DOZ PVT E-400				<b>2</b>	<b>E-400</b>	<b>0700-0700</b>	Brush Creek Fire Station
DOZ PVT E-402			<b>Morrison, Matt</b>	<b>2</b>	<b>E-402</b>	<b>0700-0700</b>	Brush Creek Fire Station

**6. Work Assignments:**  
 Scout the Fire for Branch and Division Breaks to validate Control Lines  
 Construct contingency line  
 Prepare Structure Defense Plan

**7. Special Instructions:**  
 Personnel may be transported across the Feather River arm of Lake Oroville using the DRW boat. All personnel are required to wear a PFD

8. Communications							
Name	Ch	Function	Rx Freq	Rx Tone	Tx Freq	Tx Tone	Notes
BUT SUP T2	1	COMMAND	154.4150	123.0	159.0000	123	TONE 2 SUNSET
CDF T30	10	TACTICAL	151.3925	192.8 (T16)	151.3925	192.8 (T16)	
CALCORD	15	MEDICAL	156.0750	156.7 (T6)	156.0750	156.7 (T6)	
A/G CDF T18	5	A/G CMD	159.3450	192.8 (T16)	159.3450	192.8 (T16)	A-G COMMAND
GUARD	16	EMERGENCY	168.6250		168.6250	110.9	

**9. Prepared by: Name:** Jim Irving                      RESL                      Signature: 

**ICS 204**                      Date/Time: 11/11/2018 2200                      Personnel Count: 72



# ASSIGNMENT LIST (ICS 204 WF)

CONTROLLED UNCLASSIFIED  
INFORMATION/BASIC

<b>1. Incident Name:</b> <p style="text-align: center; font-size: 1.2em;">Camp</p>	<b>2. Operational Period:</b> Date From: 11/12/18      Date To: 11/13/18 Time From: 0700              Time To: 0700	<b>3. Branch</b> <b>Division</b> <p style="text-align: center; font-size: 1.5em;">X                                  QQ</p>
---	---	--

<b>4. Operations Personnel:</b>		Page 3 of 4      Quebec-Quebec
Operations Section Chief: <b>Mark Brown, Josh Bischof (T)</b>	Night Ops: <b>Mark Higgins</b>	
Branch Director: <b>Gus Boston, Deano Esaess (T)</b>	Branch Safety: <b>Zimmerman</b>	
Division/Group Supervisor: <b>Jeff Edson</b> <i>RON WELCOME(T)</i>	Air Attack: <b>Jake Sjolund</b>	

5. Resources Assigned:		** Resources Below in Bold are 12 Hour **					
Resource Identifier	ALS	LWD	Leader	Personnel	Request #	Hours	Reporting Location
DOZ PVT E-403			Dills, Evan	2	E-403	0700-0700	Brush Creek Fire Station
DOZ PVT E-404			Polson, Jared	2	E-404	0700-0700	Brush Creek Fire Station
DOZ PVT E-411			Wheeler, Roger	2	E-411	0700-0700	Brush Creek Fire Station
DOZ PVT E-570			John Britten	2	E-570	0700-0700	Brush Creek Fire Station
W/T PVT E-596			Byers, Darin	2	E-596	0700-0700	Brush Creek Fire Station
W/T PVT E-650			Aguilar, Andrew	2	E-650	0700-0700	Brush Creek Fire Station
W/T PVT E-651			McDaniels, Tim	2	E-651	0700-0700	Brush Creek Fire Station
W/T PVT E-662			Mayberry, Steve	2	E-662	0700-0700	Brush Creek Fire Station
W/T						0700-0700	Brush Creek Fire Station
<b>CHIP</b> <i>E-722</i>						<b>0700-1900</b>	<b>Brush Creek Fire Station</b>
<b>CHIP</b> <i>E-699</i>						<b>0700-1900</b>	<b>Brush Creek Fire Station</b>
HEQB						0700-0700	Brush Creek Fire Station
HEQB						0700-0700	Brush Creek Fire Station
HEQB						0700-0700	Brush Creek Fire Station
HEQB						0700-0700	Brush Creek Fire Station
HEQB						0700-0700	Brush Creek Fire Station
HEQB						0700-0700	Brush Creek Fire Station
<b>MAST</b>						<b>0700-1900</b>	<b>Brush Creek Fire Station</b>
<b>MAST</b>						<b>0700-1900</b>	<b>Brush Creek Fire Station</b>

**6. Work Assignments:**  
 Scout the Fire for Branch and Division Breaks to validate Control Lines  
 Construct contingency line  
 Prepare Structure Defense Plan

**7. Special Instructions:**  
*DOZ 1448 -*  
*DOZ 2440*  
*DOZ E-406*  
*DOZ E-937*  
*TFLD = WINKLER (12)*  
*TFLD = VIDOSH*

8. Communications							
Name	Ch	Function	Rx Freq	Rx Tone	Tx Freq	Tx Tone	Notes
BUT SUP T2	1	COMMAND	154.4150	123.0	159.0000	123	TONE 2 SUNSET
CDF T30	10	TACTICAL	151.3925	192.8 (T16)	151.3925	192.8 (T16)	
CALCORD	15	MEDICAL	156.0750	156.7 (T6)	156.0750	156.7 (T6)	
A/G CDF T18	5	A/G CMD	159.3450	192.8 (T16)	159.3450	192.8 (T16)	A-G COMMAND
GUARD	16	EMERGENCY	168.6250		168.6250	110.9	

**9. Prepared by: Name:**                      Jim Irving                                      RESL

Signature:

**ICS 204**    Date/Time: 11/11/2018 2200                      Personnel Count: 16











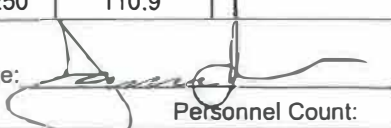






# ASSIGNMENT LIST (ICS 204 WF)

CONTROLLED UNCLASSIFIED  
INFORMATION//BASIC

<b>1. Incident Name:</b> <p style="text-align: center; font-size: 1.2em;">Camp</p>		<b>2. Operational Period:</b> Date From: 11/12/18    Date To: 11/13/18 Time From: 0700    Time To: 0700				<b>3. Branch</b> <b>Division</b> <p style="text-align: center; font-size: 1.2em;">Rescue    Rescue Grp 1</p>	
<b>4. Operations Personnel:</b>						Page 1 of 2	
Operations Section Chief: <b>Mark Brown, Josh Bischof (T)</b>				Night Ops: <b>Mark Higgins</b>			
Branch Director: <b>Tony Brownell</b>				Branch Safety:			
Division/Group Supervisor:				Air Attack: <b>Jake Sjolund</b>			
<b>5. Resources Assigned:</b>		<b>** Resources Below In Bold are 12 Hour **</b>					
Resource Identifier	ALS	LWD	Leader	Personnel	Request #	Hours	Reporting Location
DIVS							ICP
DIVS							ICP
STA XAL 2013A			<b>Bowron, Jamie</b>	22	E-56	0700-0700	ICP
STA OR ST10			<b>Labelle, Chris</b>	22	E-537	0700-0700	ICP
CRW SHF 15A			<b>Brendlinger, Shane</b>	20	<b>C-103</b>	<b>0700-1900</b>	ICP
CRW2							ICP
CRW2							ICP
CRW2							ICP
MAST						<b>0700-1900</b>	ICP
CHP PVT E-700				1	E-700	0700-0700	ICP
CHP							ICP
<del>PUMP TRUCK</del> <b>E-720</b>							ICP
<del>PUMP TRUCK</del> <b>E-721</b>							ICP
AMBULANCE							ICP
AMBULANCE							ICP
AMBULANCE							ICP
AMBULANCE							ICP
AMBULANCE							ICP
AMBULANCE							ICP
<b>6. Work Assignments:</b> <b>FRONT LOADER = E-719</b>							
<b>7. Special Instructions:</b>							
<b>8. Communications</b>							
Name	Ch	Function	Rx Freq	Rx Tone	Tx Freq	Tx Tone	Notes
	#N/A						
	#N/A	#N/A	#N/A	#N/A	#N/A	#N/A	#N/A
CALCORD	15	MEDICAL	156.0750	156.7 (T6)	156.0750	156.7 (T6)	
A/G CDF T18	5	A/G CMD	159.3450	192.8 (T16)	159.3450	192.8 (T16)	A-G COMMAND
GUARD	16	EMERGENCY	168.6250		168.6250	110.9	
<b>9. Prepared by: Name:</b>		Jim Irving		RESL		Signature: 	
<b>ICS 204</b>		Date/Time: 11/11/2018 2200				Personnel Count: 65	







# SAFETY MESSAGE CAMP



18-CA-BTU-016737 November 12, 2018 0700-0700

## ELECTRICAL HAZARDS

### UTILITIES IN AND AROUND THE FIRE AREA

#### Watch out

- Power lines may be hidden
- Underground services may be exposed and/or damaged
- Electrical hazards may be in burned out dwellings and otherwise hidden

#### Mitigation

- Visually check power poles to identify service lines leading to underground service
- Treat all electrical panels and power lines as if they are charged
- Make contact and communicate with utility workers working in your area.

## GENERAL ILLNESS

### FATIGUE and ARDUOUS WORK PUTS US AT RISK

#### Watch Out

- **Dehydration** and heat exhaustion and serious medical emergencies
- **Arduous work** increases core temperature, weakens the body's ability to function healthy and causes fatigue
- **Fatigue** Causes poor judgement and decreased work performance affecting safety

#### Mitigation

- Proper nutrition, rest and hydration reduces fatigue and exhaustion emergencies
- Drink plenty of water and eat right– START EARLY – reduce caffeine input
- Take breaks throughout the work-period and take measures to cool down

## TOPOGRAPHY

### TOUGH COUNTRY TO WORK IN

#### Watch Out

- Steep slopes may cause rolling material hazards
- This terrain will cause quick, unexpected upslope fire behavior
- Significant slip hazard exists throughout the incident

#### Mitigation

- Post lookouts and monitor changes in fire behavior
- Watch out in areas with steep slopes, watch your footing and drive appropriately
- Look and Listen for rolling rocks and boulders and 'call out' to others around you



215A

*Douglas Michael Ferro*  
**INCIDENT TEAM SAFETY**

S  
A  
F  
E  
T  
Y

S  
A  
F  
E  
T  
Y

S  
A  
F  
E  
T  
Y

E  
V  
E  
R  
Y  
O  
N  
E  
S  
  
R  
E  
S  
P  
O  
N  
S  
I  
B  
I  
L  
I  
T  
Y



# ICS 205 - INCIDENT RADIO COMMUNICATIONS PLAN

CONTROLLED UNCLASSIFIED INFORMATION//BASIC

<b>1. Incident Name:</b> <p style="text-align: center;"><b>Camp</b> <b>Incident Channels</b></p>	<b>2. Date/Time Prepared</b> Date: 11/11/2018 Time: 1930	<b>3. Operational Period:</b> Date From: 11/12/18      Date To: 11/13/18 Time From: 0700              Time To: 0700
---	--	---

**4. Communications**

Ch#	Function	Name	Assigned To	Rx Freq	Rx Tone	Tx Freq	Tx Tone	Notes
1	COMMAND	BUT SUP T2	COMMAND	154.4150	123.0	159.0000	123.0	TONE 2 SUNSET
2	COMMAND	BUT SUP T4	COMMAND	154.4150	123.0	159.0000	136.5	TONE 4 BALD MTN
3	COMMAND	BUT SUP T5	COMMAND	154.4150	123.0	159.0000	146.2	TONE 5 MT. ST. JOHN
4	COMMAND	BUT SUP T13	COMMAND	154.4150	123.0	159.0000	141.3	TONE 13 BLOOMER MTN
5	A/G CMD	A/G CDF T18	AIR TO GROUND	159.3450	192.8 (T16)	159.3450	192.8 (T16)	A-G COMMAND
6	A/G TAC	A/G CDF T25	AIR TO GROUND	159.2775	192.8 (T16)	159.2775	192.8 (T16)	A-G TACTICAL
7	TACTICAL	CDF T27	DIV A / N	159.3075	192.8 (T16)	159.3075	192.8 (T16)	
8	TACTICAL	CDF T28	DIV B	151.1825	192.8 (T16)	151.1825	192.8 (T16)	
9	TACTICAL	CDF T29	DIV D / U	151.3475	192.8 (T16)	151.3475	192.8 (T16)	
10	TACTICAL	CDF T30	DIV E / QQ	151.3925	192.8 (T16)	151.3925	192.8 (T16)	
11	TACTICAL	CDF T31	DIV F / Y	159.3825	192.8 (T16)	159.3825	192.8 (T16)	
12	TACTICAL	CDF T32	DIV G / MM	151.2425	192.8 (T16)	151.2425	192.8 (T16)	
13	TACTICAL	CDF T34	DIV H / OO	151.4675	192.8 (T16)	151.4675	192.8 (T16)	
14	TACTICAL	CDF T35	DIV K / CONT.	159.3225	192.8 (T16)	159.3225	192.8 (T16)	
15	MEDICAL	CALCORD	MEDICAL	156.0750	156.7 (T6)	156.0750	156.7 (T6)	
16	EMERGENCY	GUARD	EMERGENCY	168.6250		168.6250	110.9	
17								
18								
19								
20	EMERGENCY	GUARD	EMERGENCY	168.6250		168.6250	110.9	

**5. Special Instructions**

**Camp Communications 530-417-4559**

<b>6. Prepared by (Communications Unit Leader): Name: Tom Webb</b>	Signature: _____
--	------------------

50



<b>MEDICAL PLAN ICS 206</b>	<b>INCIDENT NAME</b>	<b>DATE &amp; TIME PREPARED</b>	<b>OPERATIONAL PERIOD</b>
	<b>CAMP</b>	<b>11/11/18 1700HRS</b>	<b>11/12/18-11/13/18 0700-0700HRS</b>

<b>MEDICAL AID STATIONS</b>			
<b>NAME</b>	<b>LOCATION</b>	<b>CONTACT NUMBER</b>	<b>SERVICE LEVEL</b>
MERT & medical supplies	Incident Base		MD

<b>TRANSPORTATION (indicate air or ground)</b>			
<b>NAME</b>	<b>LOCATION</b>	<b>CONTACT NUMBER</b>	<b>SERVICE LEVEL</b>
Butte County EMS	Chico, CA.	530-895-9124	ALS
Air Ambulance- Reach /CALSTAR	Marysville, CA.	800-338-4045	RN
Enloe Air Ambulance	Chico, CA.	800-344-1863	RN
Hoist Ships-C901-Day/Sac Metro-night	Oroville Helibase	916-616-2581	ALS

**INCIDENT AMBULANCES**

<b>NAME</b>	<b>ADDRESS</b>	<b>PHONE #</b>	<b>TRAVEL TIME- minutes</b>		<b>Trauma Center</b>	<b>Burn Center</b>	<b>Helipad</b>
			<b>AIR</b>	<b>GROUND</b>			
Oroville	2767 Olive Hwy. Oroville, CA.	530-532-8334	12	37	<input type="checkbox"/> No	<input type="checkbox"/> No	<input checked="" type="checkbox"/> Yes
Orchard Biggs Memorial	240 Spruce St. Gridley, CA.	530-846-5671	15	40	<input type="checkbox"/> No	<input type="checkbox"/> No	<input type="checkbox"/> No
Enloe (Trauma Center)	1530 Esplanade Chico, CA.	530-332-7743	6	20	Level 2	<input type="checkbox"/> No	<input checked="" type="checkbox"/> Yes
U.C Davis Medical Center	2315 Stockton Blvd. Sacramento, CA.	916-734-3790	37	108	Level 1	<input checked="" type="checkbox"/> Yes	<input checked="" type="checkbox"/> Yes

**MEDICAL EMERGENCY PROCEDURES**

**LINE EMERGENCY: CALCORD**  
 Crew Supervisor will contact Division Supervisor with patient complaint/condition and location.  
 - Division Group Supervisor Contacts:  
 1. Closest EMS resource  
 2. Communications Unit  
 - Communications Unit Contacts:  
 1. Ground or Air Ambulance as requested.  
 2. Medical Unit (916) 622-3371  
 3. Safety  
 4. Operations  
 - Division Supervisor or designee will serve as point of contact and run medical emergency on assigned channel.  
 1. A pre-assigned tactical frequency (CALCORD) should be used for IWI and only for duration of the emergency.  
 - Communications Unit will clear the Command channel for emergency traffic as needed for duration of the need.

**CAMP EMERGENCY:**  
 Contact Communications on CALCORD or @ 530-417-4561 with patient complaint and location.  
 Communications will respond appropriate medical response.  
 - Communications contacts:  
 1. Medical Unit  
 2. Safety  
 3. Logistics  
 4. Operations  
 5. Crew Supervisor  
 6. Comp/Claims

**INCIDENT REPORTING PROCEDURES:**  
**\*\*COLLECT ALL INFO BELOW PRIOR TO INITIATING EMERGENCY\*\***  
**CHIEF COMPLAINT** \_\_\_\_\_  
**LOCATION OF PATIENT** \_\_\_\_\_  
**POINT OF CONTACT** \_\_\_\_\_  
**TRANSPORTATION REQUESTED BY: AIR\_\_ GROUND\_\_**  
**POINT OF PICKUP** \_\_\_\_\_  
**LAT \_\_\_\_\_ LONG \_\_\_\_\_**  
**PATIENT UNIT ID** \_\_\_\_\_  
**IS AN LINE MEDIC WITH PATIENT: YES \_\_\_\_ NO \_\_\_\_**  
**AGE** \_\_\_\_\_  
**SEX: MALE \_\_\_\_ FEMALE \_\_\_\_**  
**ALL EMERGENCIES---Secure the area and identify witnesses for later investigation. Keep an accurate log of events.**

<b>Hospital</b>	<b>LAT</b>	<b>LONG</b>
Oroville	39 30.27	121 32.52
Orchard Biggs	39 22.10	121 41.40
Enloe Trauma Center	39 44.50	121 51.10
U.C Davis	38 33.33	121 27.32

**PREPARED BY: (Medical Unit Leader): Name: Darin Nelson**      **Signature:** 

**APPROVED BY: (Safety Officer): Name: Jack Piccinini**      **Signature:** 



## ***TRAINING SPECIALIST MESSAGE***

**A Training Specialist is available for trainees on the incident.**

**All State, Federal and local government agency Trainees working on Position Task Books will need to register with the Incident Training Specialist in order to receive proper credit for your assignment.**

***Training Specialist's***

***Dennis Martin***

**(707) 479-8421**



**Register using the QR Code**





# CAL-FIRE INCIDENT MANAGEMENT TEAM IV



## 24HR LINE RESOURCE – 2 OPERATOR

EMERGENCY SHIFT TICKET and EVALUATION FORM						Contractor Name	
The responsible Government Officer will complete this form each shift.						THE BEST DOZERS LLC	
Incident or Project Name <b>MISSION</b>		Incident Number <b>CA-MMU-018115</b>		Request Number <b>E-444</b>		Operator #1 <b>FIRST &amp; LAST</b>	Operator #2 <b>FIRST &amp; LAST</b>
Agreement Number <b>MMU-0000015953</b>						Operator Furnished By: <input checked="" type="checkbox"/> Contractor <input type="checkbox"/> Government	
Equipment Make <b>1999 PETERBILT 379</b>		Equipment Model / Type <b>TRANSPORT 18 WHEEL</b>				Operating Supplies Furnished By: <input checked="" type="checkbox"/> Contractor <input type="checkbox"/> Government	
Serial Number <b>COMPLETE VIN#</b>		License Number <b>12345A1</b>				Equipment Status Inspected <input type="checkbox"/> Under Agreement <input checked="" type="checkbox"/>	
Equipment Use (Circle) <b>Hours</b> Days / Miles Assignment						Released by Government <input type="checkbox"/> Withdrawn by Contractor <input type="checkbox"/>	
Date Mo / Day	Start	Stop	Work	Assignment		Remarks/Comments**	
9/5	0701	2400	17	DIV X		2 OPERATORS	
9/6	0001	0700	7	DIV X		NO DAMAGE / NO CLAIM	
Vendor Rating						Govt. Rep. Name and Position – PRINT	
Poor* Avg. Good Exc. N/A						Print Your Name	
Met Performance Expectations						Govt. Rep. Signature	
Equipment in Safe Working Condition						Your Signature	
Operator Skill Level						Contractor Signature	
Operates Safely						John Smith	
Operator's Cooperation Level						Date	
Overall Performance						9/6/17 Time 0700	
* NOTE: any rating of POOR requires an explanation in Comment Section.						CAL FIRE 297	
** Final evaluation or for more documentation, use a CALFIRE Form 230 or equivalent.						(Rev 3-2011)	

## 12HR LINE RESOURCE – 1 OPERATOR

EMERGENCY SHIFT TICKET and EVALUATION FORM						Contractor Name	
The responsible Government Officer will complete this form each shift.						THE BEST DOZERS LLC	
Incident or Project Name <b>MISSION</b>		Incident Number <b>CA-MMU-018115</b>		Request Number <b>E-555</b>		Operator #1 <b>FIRST &amp; LAST</b>	Operator #2 <b>-</b>
Agreement Number <b>MMU-0000015955</b>						Operator Furnished By: <input checked="" type="checkbox"/> Contractor <input type="checkbox"/> Government	
Equipment Make <b>2004 CAT</b>		Equipment Model / Type <b>D6N / TYPE II E</b>				Operating Supplies Furnished By: <input checked="" type="checkbox"/> Contractor <input type="checkbox"/> Government	
Serial Number <b>COMPLETE VIN#</b>		License Number <b>-</b>				Equipment Status Inspected <input type="checkbox"/> Under Agreement <input checked="" type="checkbox"/>	
Equipment Use (Circle) <b>Hours</b> Days / Miles Assignment						Released by Government <input type="checkbox"/> Withdrawn by Contractor <input type="checkbox"/>	
Date Mo / Day	Start	Stop	Work	Assignment		Remarks/Comments**	
9/7	0001	0700	7	OFF SHIFT		1 OPERATOR	
9/7	0701	1900	12	DIV X		NO DAMAGE / NO CLAIM	
9/7	1901	2400	5	OFF SHIFT		NO DAMAGE / NO CLAIM	
Vendor Rating						Govt. Rep. Name and Position – PRINT	
Poor* Avg. Good Exc. N/A						Print Your Name	
Met Performance Expectations						Govt. Rep. Signature	
Equipment in Safe Working Condition						Your Signature	
Operator Skill Level						Contractor Signature	
Operates Safely						John Smith	
Operator's Cooperation Level						Date	
Overall Performance						9/5/17 Time 1900	
* NOTE: any rating of POOR requires an explanation in Comment Section.						CAL FIRE 297	
** Final evaluation or for more documentation, use a CALFIRE Form 230 or equivalent.						(Rev 3-2011)	

## 24HR / 12HR TRANSITION SHIFT TICKET

EMERGENCY SHIFT TICKET and EVALUATION FORM						Contractor Name	
The responsible Government Officer will complete this form each shift.						THE BEST DOZERS LLC	
Incident or Project Name <b>MISSION</b>		Incident Number <b>CA-MMU-018115</b>		Request Number <b>E-444</b>		Operator #1 <b>FIRST &amp; LAST</b>	Operator #2 <b>FIRST &amp; LAST</b>
Agreement Number <b>MMU-0000015953</b>						Operator Furnished By: <input checked="" type="checkbox"/> Contractor <input type="checkbox"/> Government	
Equipment Make <b>1999 PETERBILT 379</b>		Equipment Model / Type <b>TRANSPORT 18 WHEEL</b>				Operating Supplies Furnished By: <input checked="" type="checkbox"/> Contractor <input type="checkbox"/> Government	
Serial Number <b>COMPLETE VIN#</b>		License Number <b>12345A1</b>				Equipment Status Inspected <input type="checkbox"/> Under Agreement <input checked="" type="checkbox"/>	
Equipment Use (Circle) <b>Hours</b> Days / Miles Assignment						Released by Government <input type="checkbox"/> Withdrawn by Contractor <input type="checkbox"/>	
Date Mo / Day	Start	Stop	Work	Assignment		Remarks/Comments**	
9/6	0701	1900	12	DIV X		2 OPERATORS	
9/6	1901	2400	5	OFF SHIFT		NO DAMAGE / NO CLAIM	
Vendor Rating						Govt. Rep. Name and Position – PRINT	
Poor* Avg. Good Exc. N/A						Print Your Name	
Met Performance Expectations						Govt. Rep. Signature	
Equipment in Safe Working Condition						Your Signature	
Operator Skill Level						Contractor Signature	
Operates Safely						John Smith	
Operator's Cooperation Level						Date	
Overall Performance						9/5/17 Time 1900	
* NOTE: any rating of POOR requires an explanation in Comment Section.						CAL FIRE 297	
** Final evaluation or for more documentation, use a CALFIRE Form 230 or equivalent.						(Rev 3-2011)	

## 24HR IN CAMP RESOURCE

EMERGENCY SHIFT TICKET and EVALUATION FORM						Contractor Name	
The responsible Government Officer will complete this form each shift.						THE BEST CAMP LLC	
Incident or Project Name <b>MISSION</b>		Incident Number <b>CA-MMU-018115</b>		Request Number <b>E-333</b>		Operator #1 <b>FIRST &amp; LAST</b>	Operator #2 <b>-</b>
Agreement Number <b>MMU-0000015950</b>						Operator Furnished By: <input checked="" type="checkbox"/> Contractor <input type="checkbox"/> Government	
Equipment Make <b>TENT</b>		Equipment Model / Type <b>WESTERN SHELTER 19X35</b>				Operating Supplies Furnished By: <input checked="" type="checkbox"/> Contractor <input type="checkbox"/> Government	
Serial Number <b>-</b>		License Number <b>-</b>				Equipment Status Inspected <input type="checkbox"/> Under Agreement <input checked="" type="checkbox"/>	
Equipment Use (Circle) <b>Hours</b> Days / Miles Assignment						Released by Government <input type="checkbox"/> Withdrawn by Contractor <input type="checkbox"/>	
Date Mo / Day	Start	Stop	Work	Assignment		Remarks/Comments**	
9/2	0001	2400	24	ICP		(4) TENTS, CANOPY W/SIDES FLOOR & INSULATED ROOF 570sq ft NO DAMAGE / NO CLAIM	
Vendor Rating						Govt. Rep. Name and Position – PRINT	
Poor* Avg. Good Exc. N/A						Print Your Name	
Met Performance Expectations						Govt. Rep. Signature	
Equipment in Safe Working Condition						Your Signature	
Operator Skill Level						Contractor Signature	
Operates Safely						John Smith	
Operator's Cooperation Level						Date	
Overall Performance						9/5/17 Time 1900	
* NOTE: any rating of POOR requires an explanation in Comment Section.						CAL FIRE 297	
** Final evaluation or for more documentation, use a CALFIRE Form 230 or equivalent.						(Rev 3-2011)	

## **Archaeological and Historic Properties: Fireline Guidance for the Camp Incident, Butte County CA**

*Do not compromise safety for the protection and preservation of archaeological and historic properties. When possible and prudent:*

1. Be on the lookout for prehistoric archaeological sites. These sites may include seasonal camps marked by the presence of obsidian and/or basalt flakes, bedrock mortar food processing sites, and village sites that contain the above and dark midden soils. The Native American group living in the area at time of historic contact was the Maidu.
2. Be on the lookout for historic archaeological sites. These sites may include old homesteads now marked by the presence of foundations, wells, and can dumps, early sawmill sites, abandoned ditches, mining tailings, and other mining features including adits (horizontal) and shafts (vertical).
3. Look for these prehistoric and historic sites in flat areas, especially adjacent to streams and springs.
4. Known sites will be marked with red/white striped plastic flagging tape.
5. If you observe artifacts, features, or sites attempt to avoid if possible. If you can't avoid, minimize ground disturbance as much as possible, only clearing the surface to as minimal a depth as necessary. Try to go around sites with dozers rather than through them. Flag new sites in red/white if possible.
6. If you find artifacts leave them in place. Some artifacts may have been intentionally placed for religious or ceremonial reasons.
7. Note locations of discovered artifacts, features, and/or sites on a map. Better yet take a GPS reading if possible. Leave information for the archaeologist with the Situation Unit so that the sites can be relocated and protected during Fire Suppression Repair.
8. If you encounter a burial site cease work in the area and contact the archaeologist immediately.

Thanks for your help protecting California's cultural heritage.

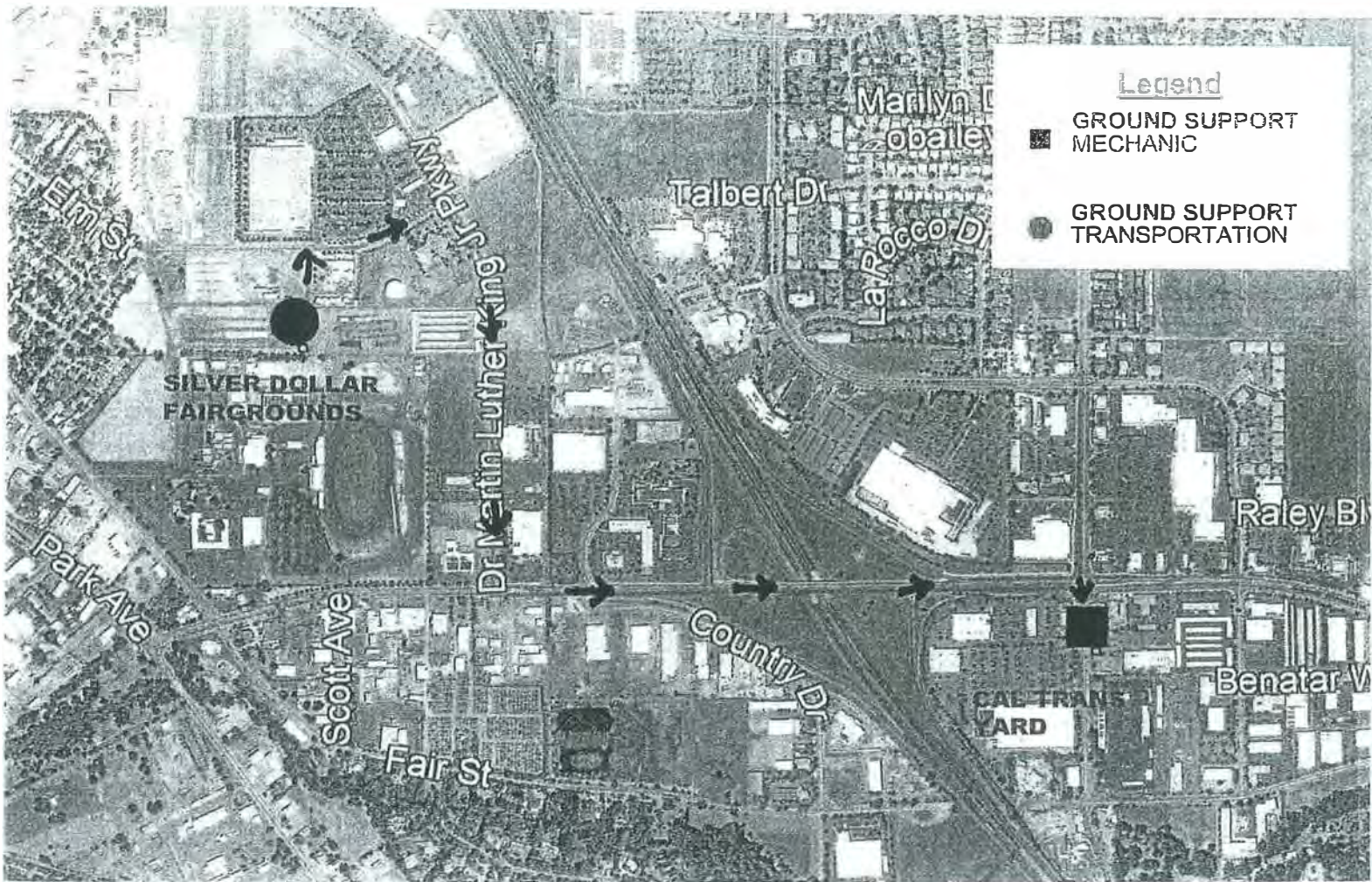
Stephanie Gallanosa  
CAL FIRE Central Sierra Archaeologist  
Cell Phone (916) 224-9207

Richard Jenkins  
CAL FIRE Northern Region Archaeologist  
Cell Phone (530) 949-8822









GROUND SUPPORT

DRIVING DIRECTIONS

- RIGHT ON TO SILVER DOLLAR WAY
- RIGHT ON DR. MARTIN LUTHER KING JR. PKYWAY
- LEFT ON EAST PARK AVE.
- RIGHT ON NOTRE DAME BLVD.
- 3536 NOTRE DAME BLVD., CHICGO









