




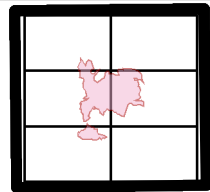




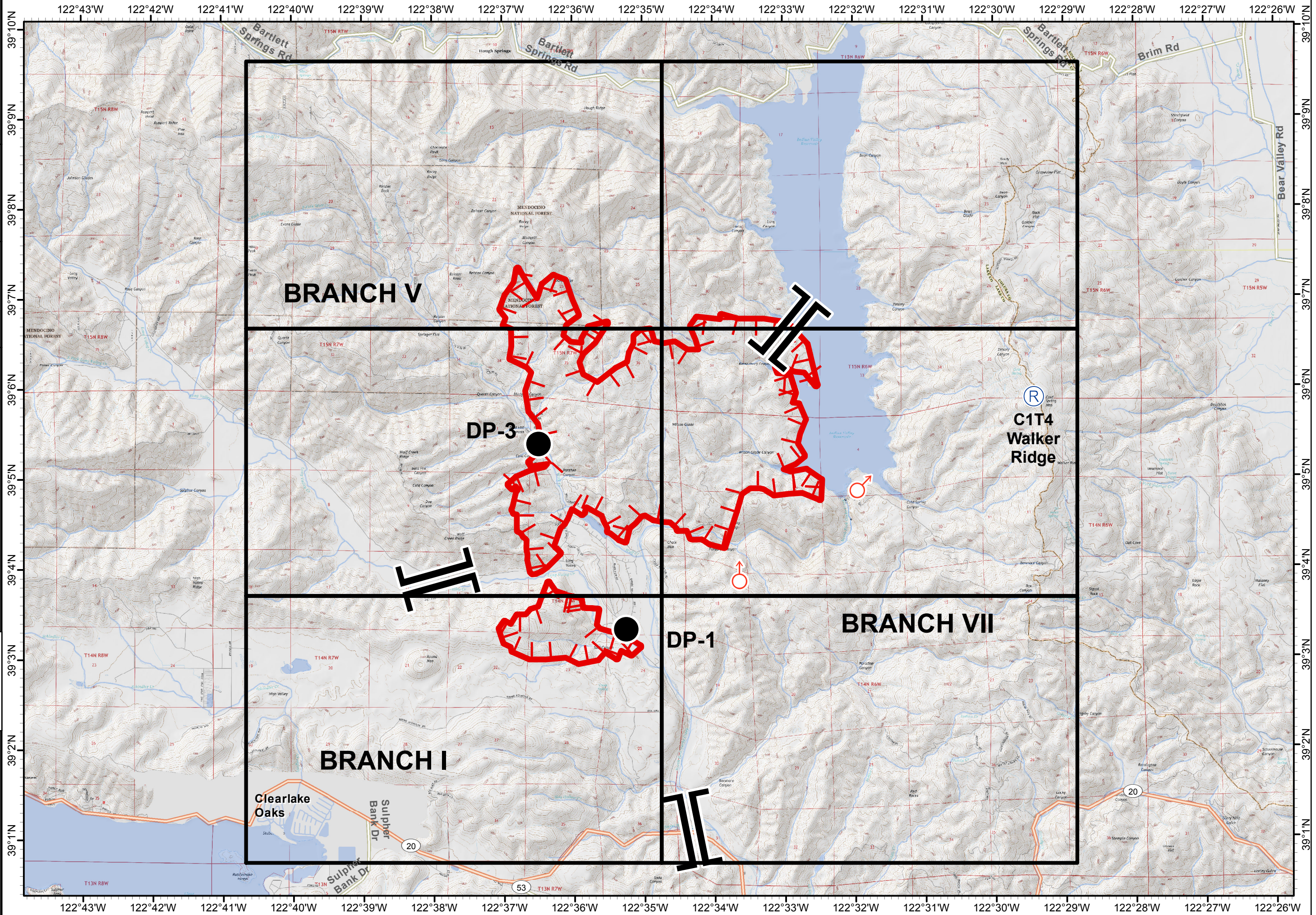
**Pawnee Incident**  
**CA-LNU-009002**  
**June 25, 2018**  
**0700 - 0700**

**IAP**  
**Map**  
**Page 0**

-  Branch
-  Uncontrolled Fire Edge
-  Drop Point
-  Repeater
-  Spot Fire



**1:70,000**  
**Team 3 GIS**  
**NAD 83**








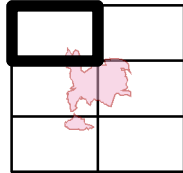




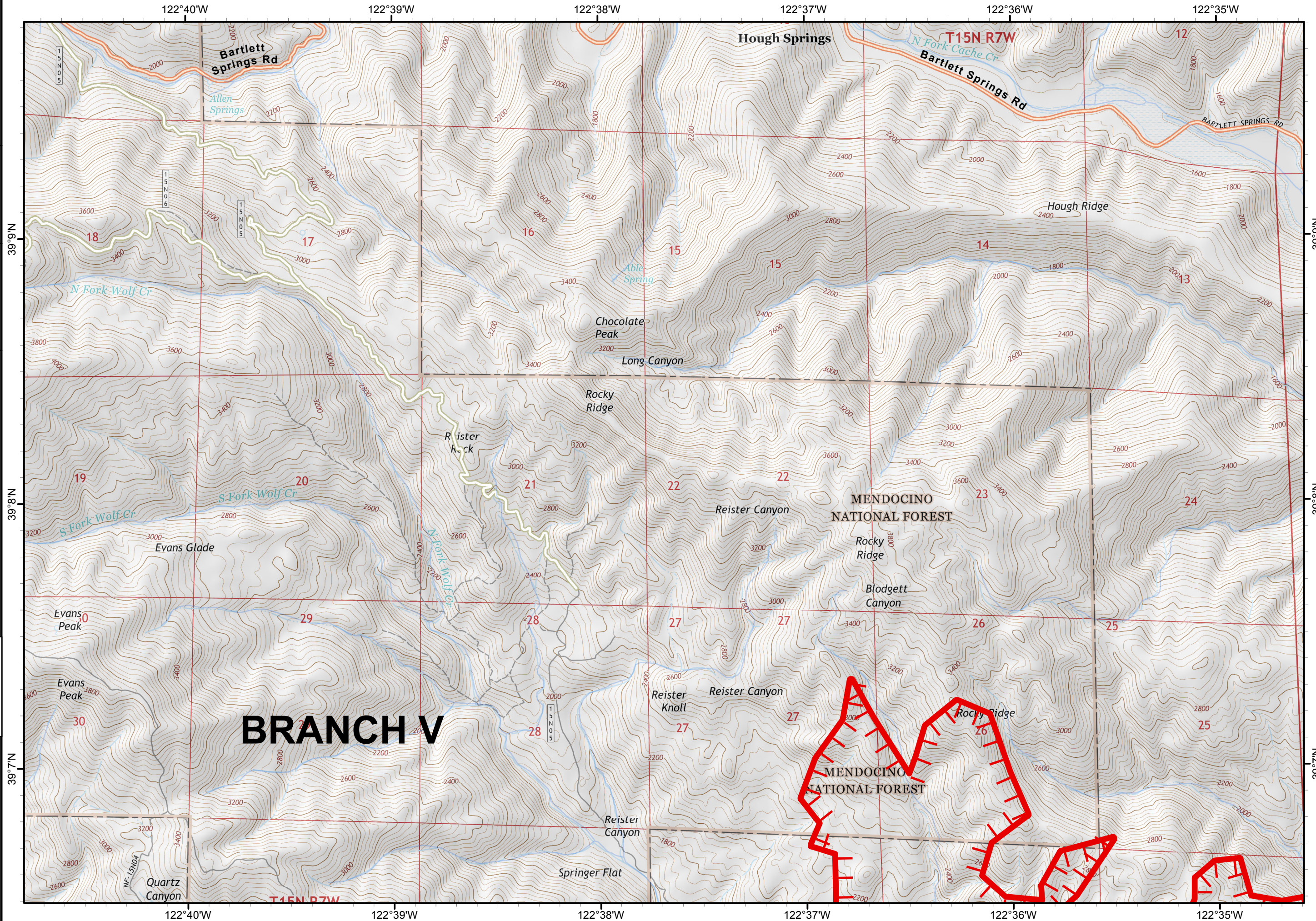
**Pawnee Incident**  
**CA-LNU-009002**  
**June 25, 2018**  
**0700 - 0700**

**IAP**  
**Map**  
**Page 1**

-  Branch
-  Uncontrolled Fire Edge
-  Drop Point
-  Repeater
-  Spot Fire



**1:24,000**  
**Team 3 GIS**  
**NAD 83**








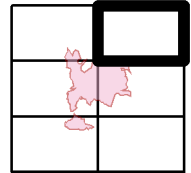




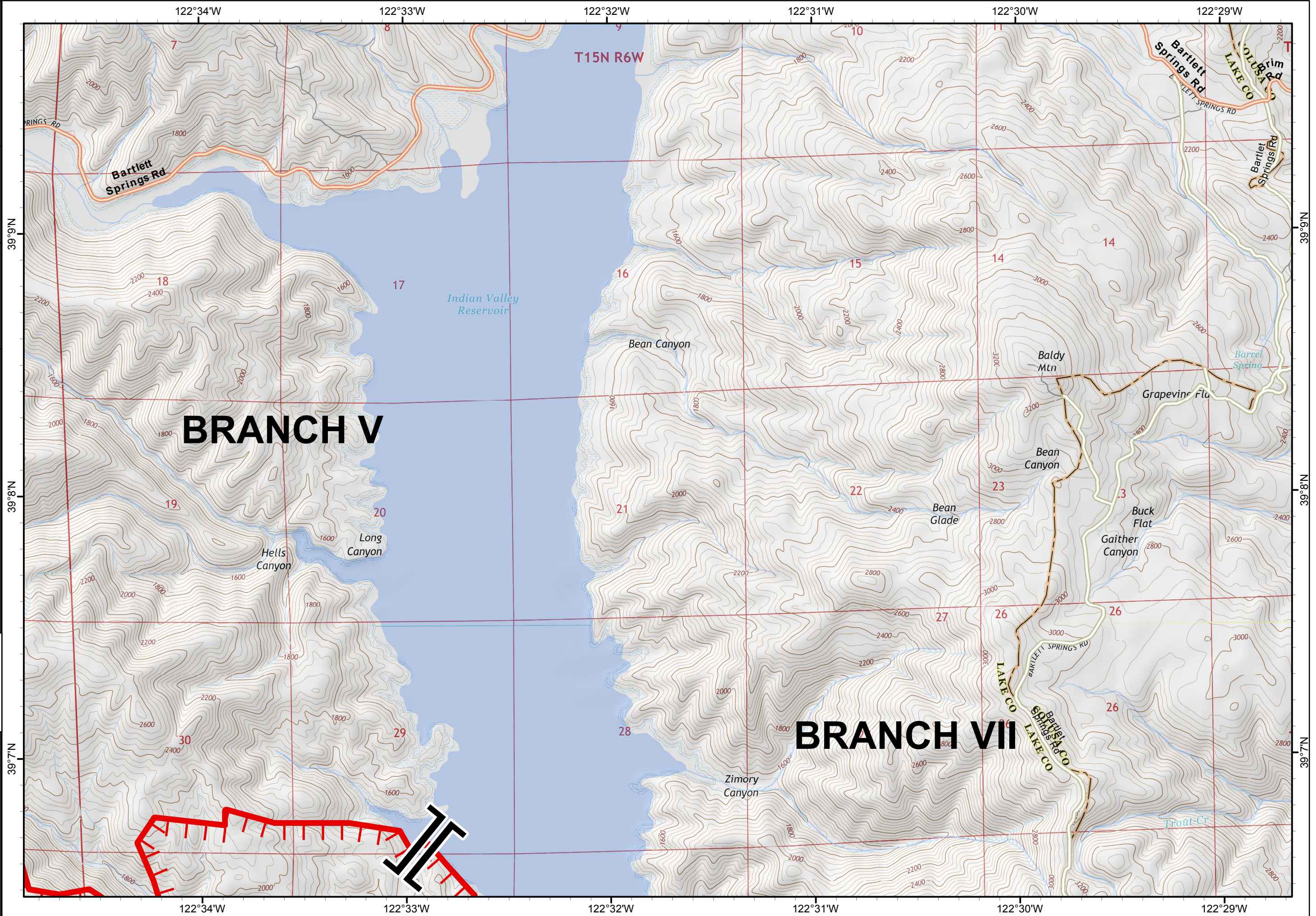
**Pawnee Incident**  
**CA-LNU-009002**  
**June 25, 2018**  
**0700 - 0700**

**IAP**  
**Map**  
**Page 2**

-  Branch
-  Uncontrolled Fire Edge
-  Drop Point
-  Repeater
-  Spot Fire



**1:24,000**  
**Team 3 GIS**  
**NAD 83**








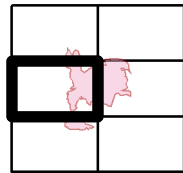




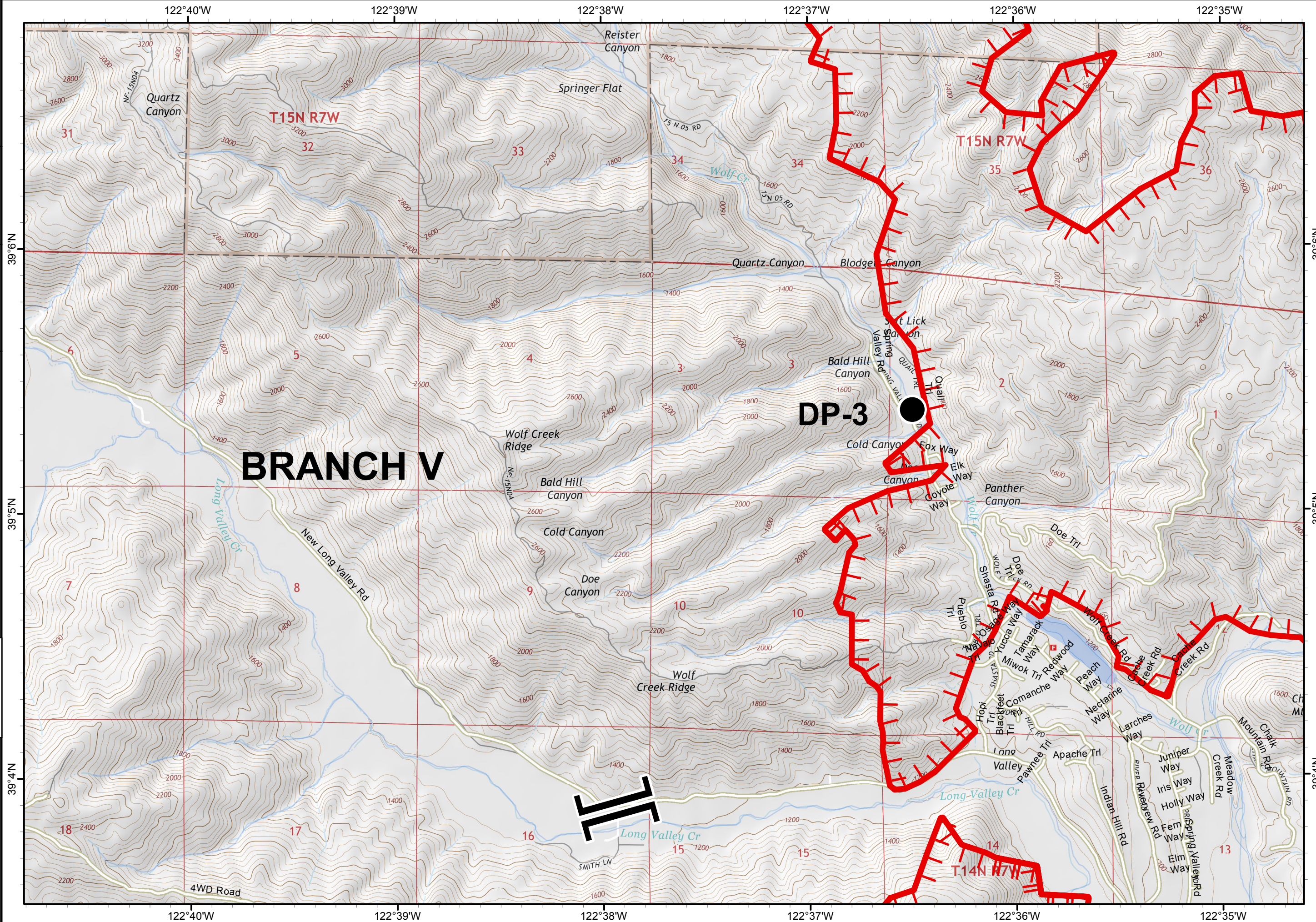
**Pawnee Incident**  
**CA-LNU-009002**  
**June 25, 2018**  
**0700 - 0700**

**IAP**  
**Map**  
**Page 3**

-  Branch
-  Uncontrolled Fire Edge
-  Drop Point
-  Repeater
-  Spot Fire



**1:24,000**  
**Team 3 GIS**  
**NAD 83**








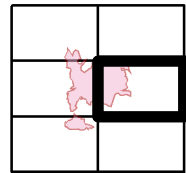




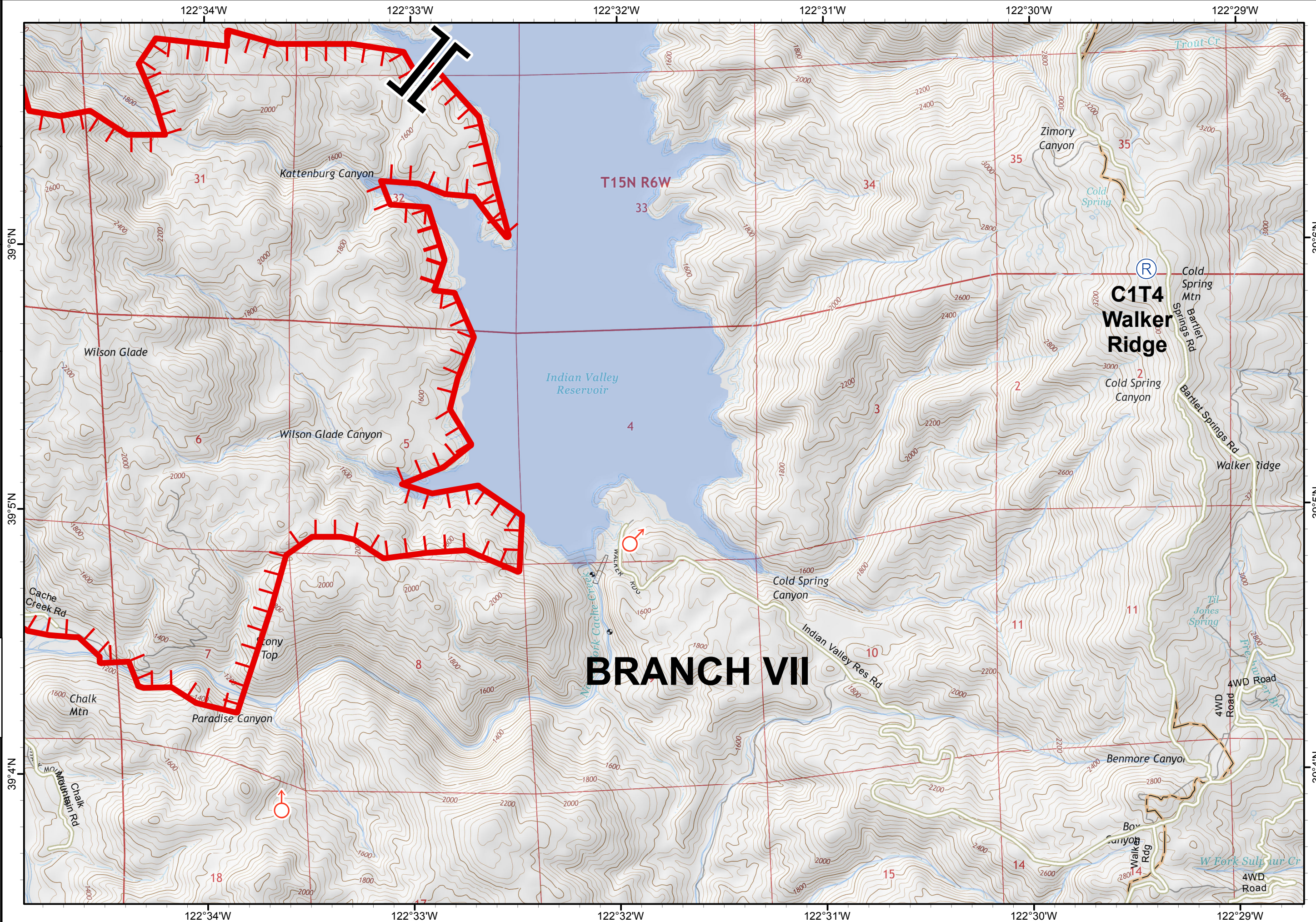
**Pawnee Incident**  
**CA-LNU-009002**  
**June 25, 2018**  
**0700 - 0700**

**IAP**  
**Map**  
**Page 4**

-  Branch
-  Uncontrolled Fire Edge
-  Drop Point
-  Repeater
-  Spot Fire



**1:24,000**  
**Team 3 GIS**  
**NAD 83**








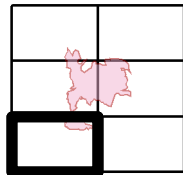




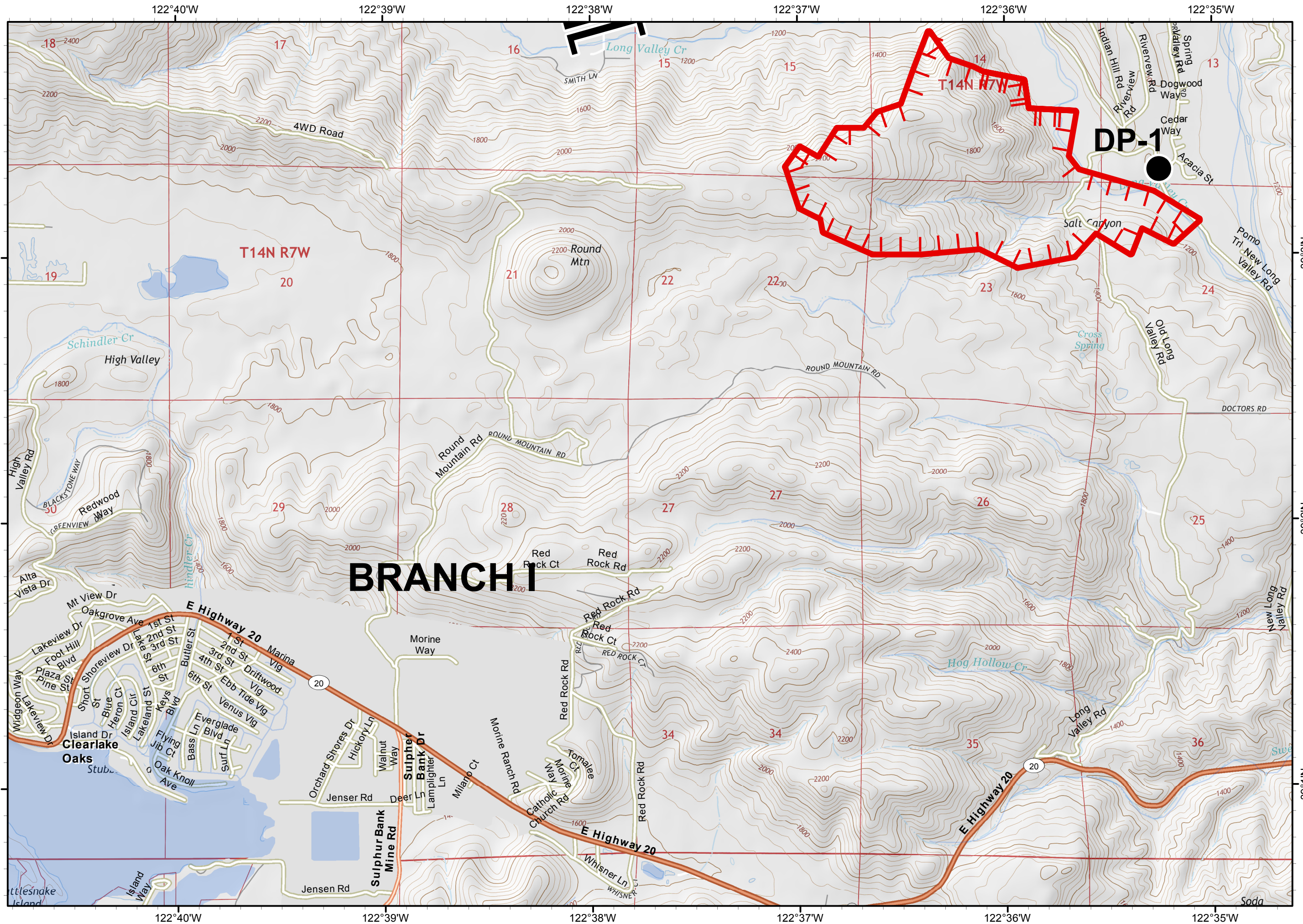
**Pawnee Incident**  
**CA-LNU-009002**  
**June 25, 2018**  
**0700 - 0700**

**IAP**  
**Map**  
**Page 5**

-  Branch
-  Uncontrolled Fire Edge
-  Drop Point
-  Repeater
-  Spot Fire



**1:24,000**  
**Team 3 GIS**  
**NAD 83**








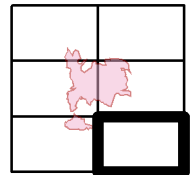




**Pawnee Incident**  
**CA-LNU-009002**  
**June 25, 2018**  
**0700 - 0700**

**IAP**  
**Map**  
**Page 6**

-  Branch
-  Uncontrolled Fire Edge
-  Drop Point
-  Repeater
-  Spot Fire



**1:24,000**  
**Team 3 GIS**  
**NAD 83**

