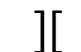




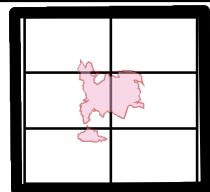




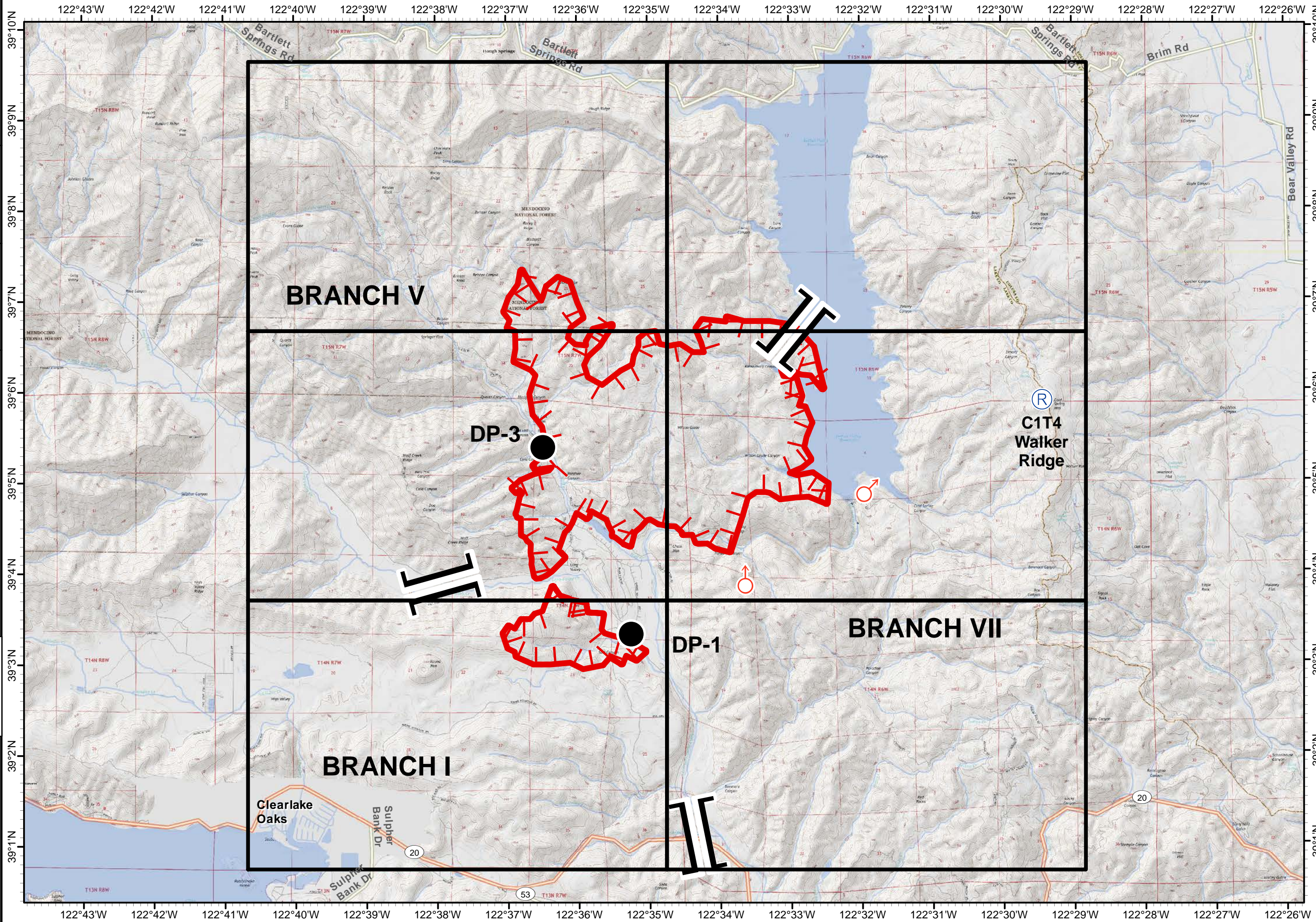
Pawnee Incident
 CA-LNU-009002
 June 25, 2018
 0700 - 0700

IAP
 Map
 Page 0

-  Branch
-  Uncontrolled Fire Edge
-  Drop Point
-  Repeater
-  Spot Fire



1:70,000
 Team 3 GIS
 NAD 83

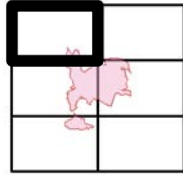




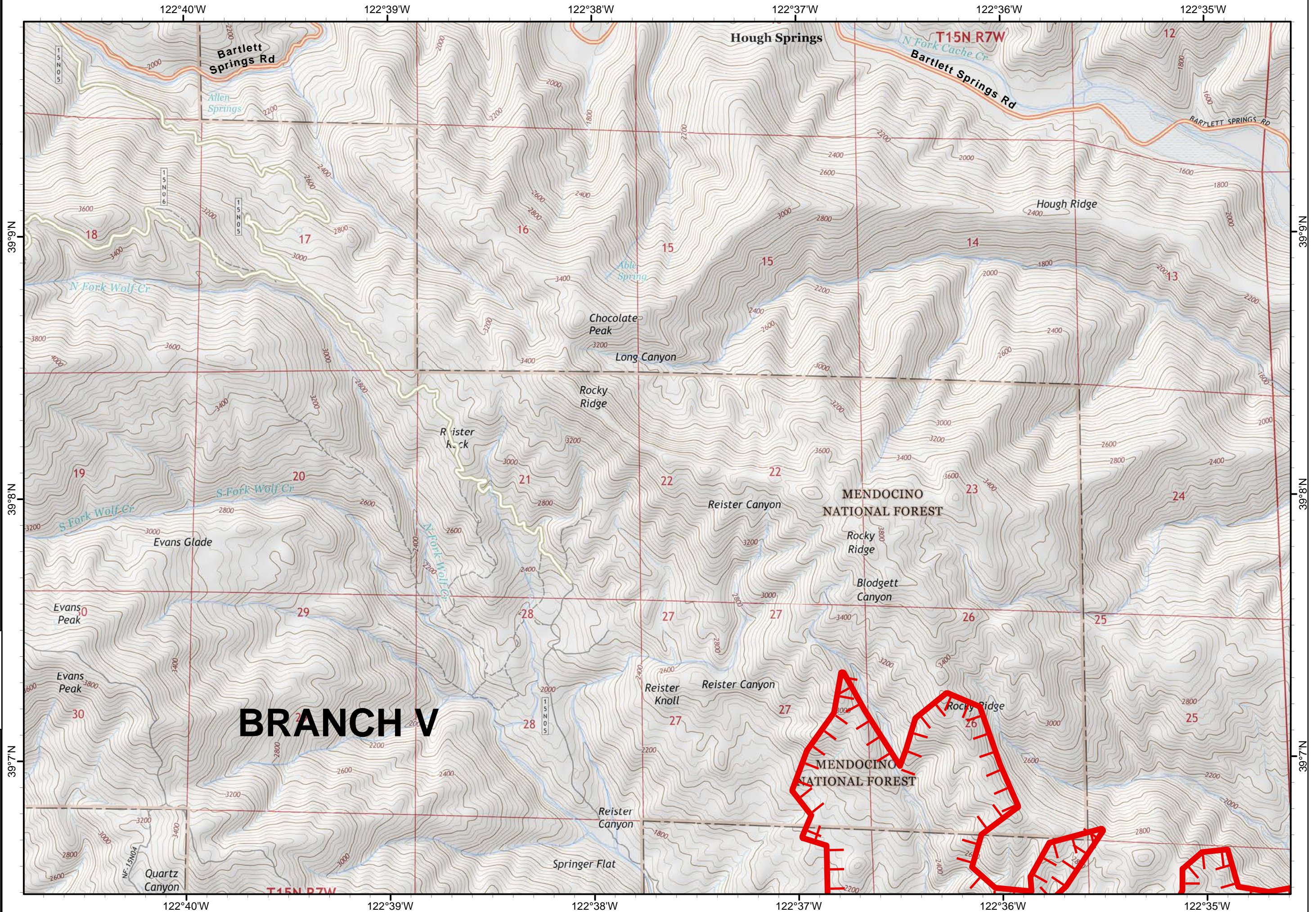
Pawnee Incident
 CA-LNU-009002
 June 25, 2018
 0700 - 0700

IAP
 Map
 Page 1

- Branch
- Uncontrolled Fire Edge
- Drop Point
- Repeater
- Spot Fire



1:24,000
 Team 3 GIS
 NAD 83








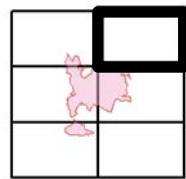


Pawnee Incident
 CA-LNU-009002
 June 25, 2018
 0700 - 0700

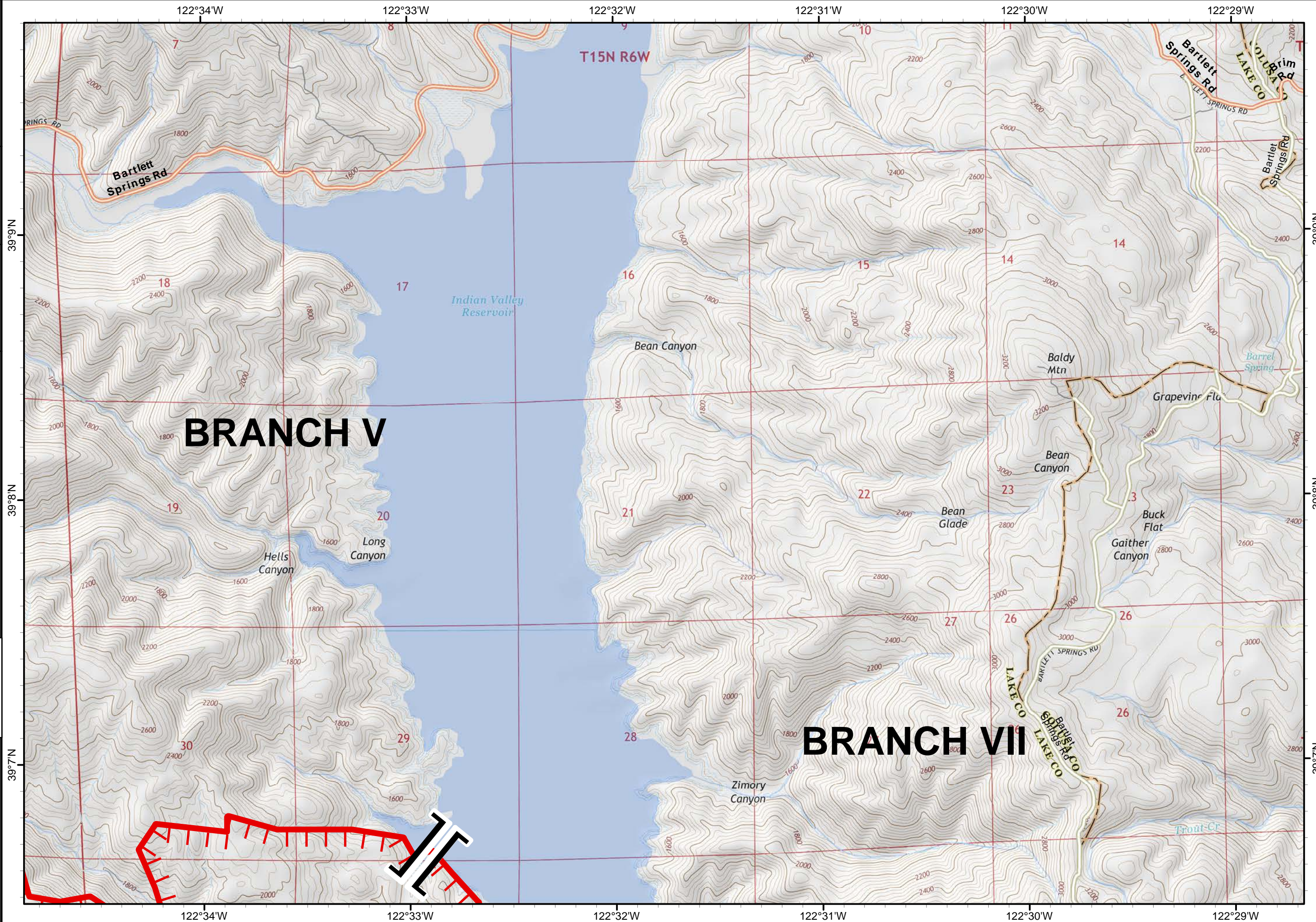
IAP
 Map

Page 2

-  Branch
-  Uncontrolled Fire Edge
-  Drop Point
-  Repeater
-  Spot Fire



1:24,000
 Team 3 GIS
 NAD 83

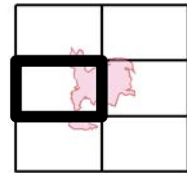




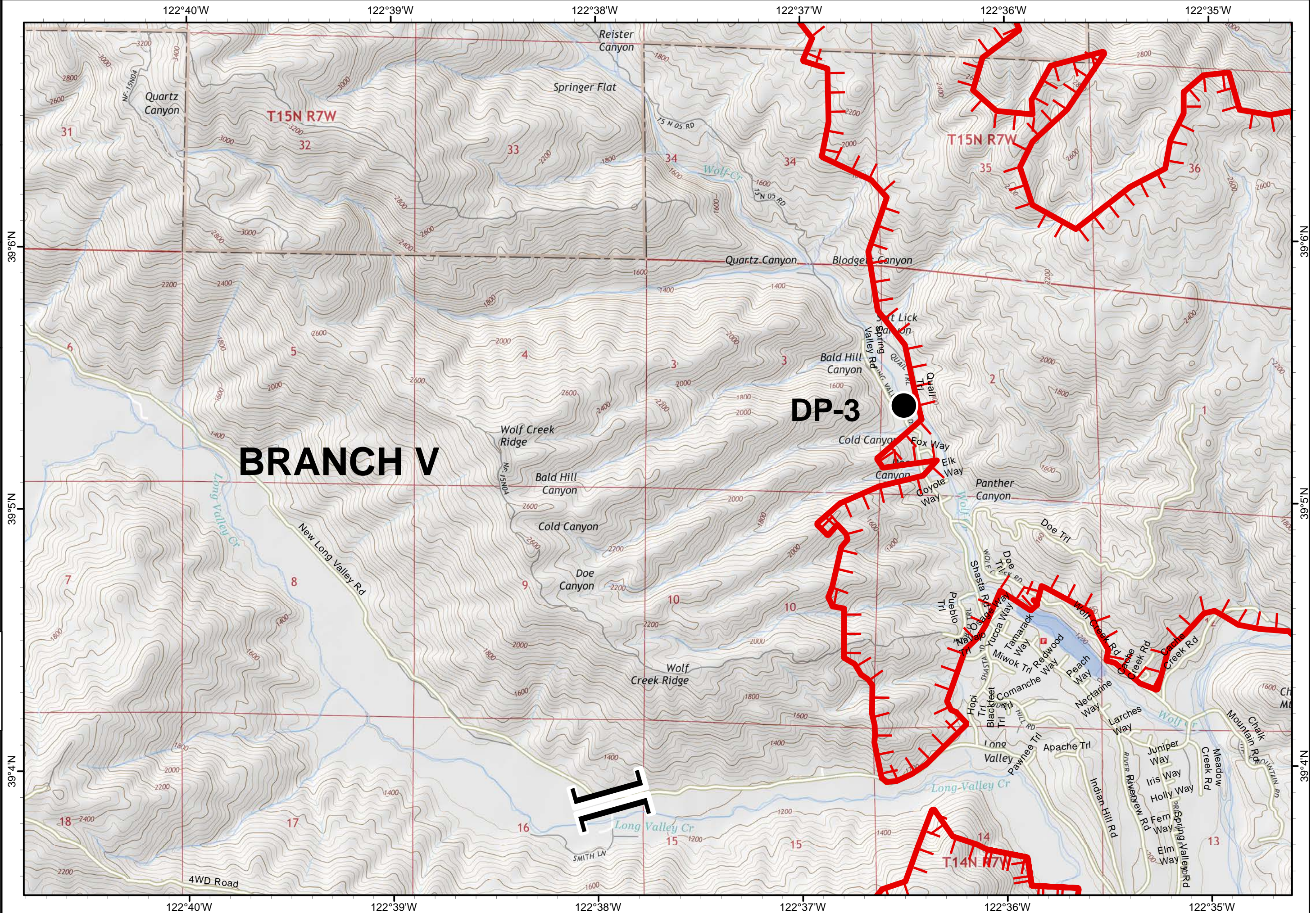
Pawnee Incident
CA-LNU-009002
June 25, 2018
0700 - 0700

IAP
Map
Page 3

- Branch
- Uncontrolled Fire Edge
- Drop Point
- Repeater
- Spot Fire



1:24,000
Team 3 GIS
NAD 83

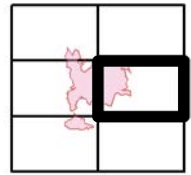




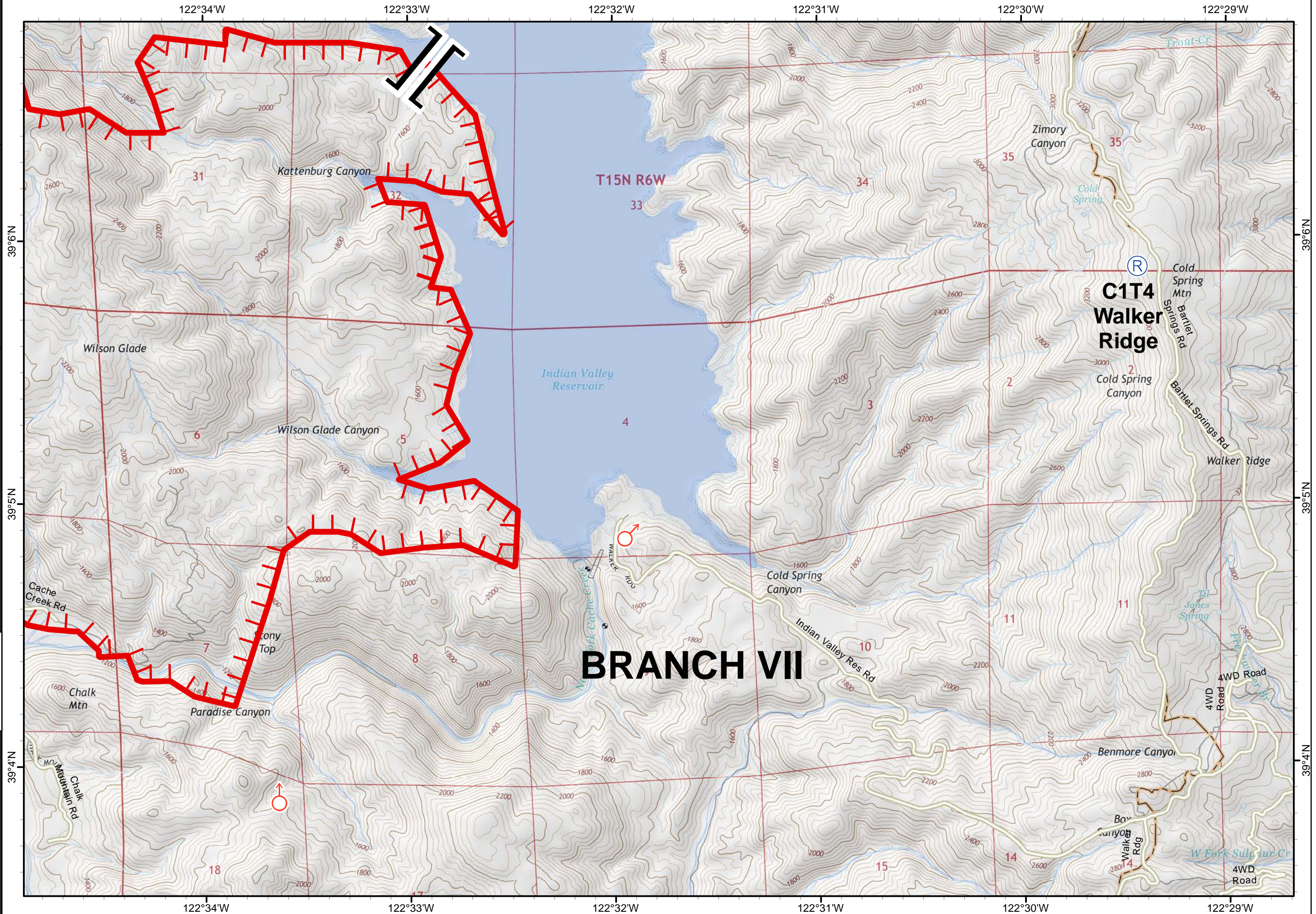
Pawnee Incident
 CA-LNU-009002
 June 25, 2018
 0700 - 0700

IAP
 Map
 Page 4

- Branch
- Uncontrolled Fire Edge
- Drop Point
- Repeater
- Spot Fire








1:24,000
 Team 3 GIS
 NAD 83

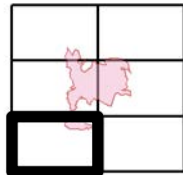




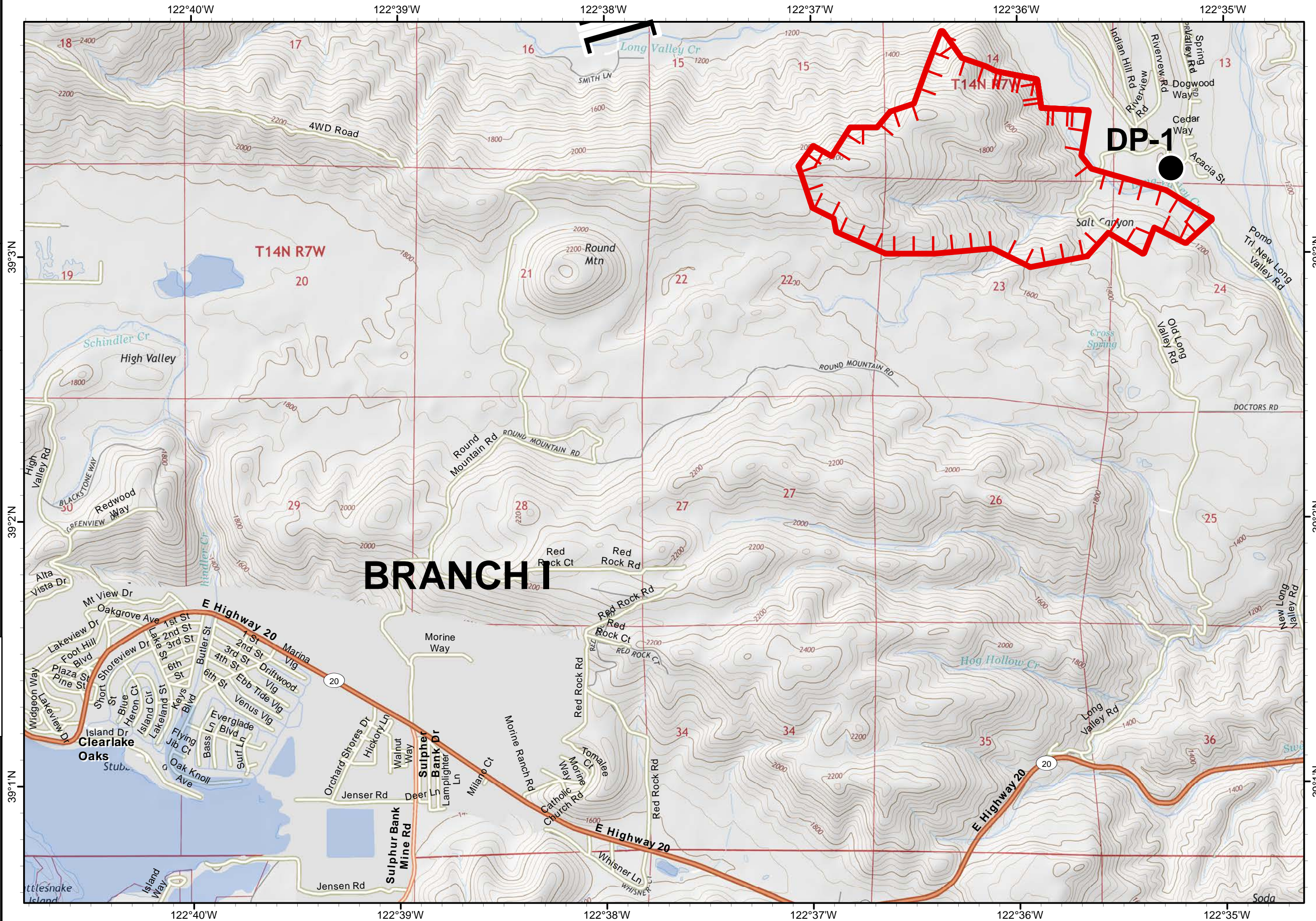
Pawnee Incident
 CA-LNU-009002
 June 25, 2018
 0700 - 0700

IAP
 Map
 Page 5

-  Branch
-  Uncontrolled Fire Edge
-  Drop Point
-  Repeater
-  Spot Fire








1:24,000
 Team 3 GIS
 NAD 83

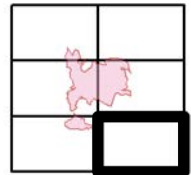




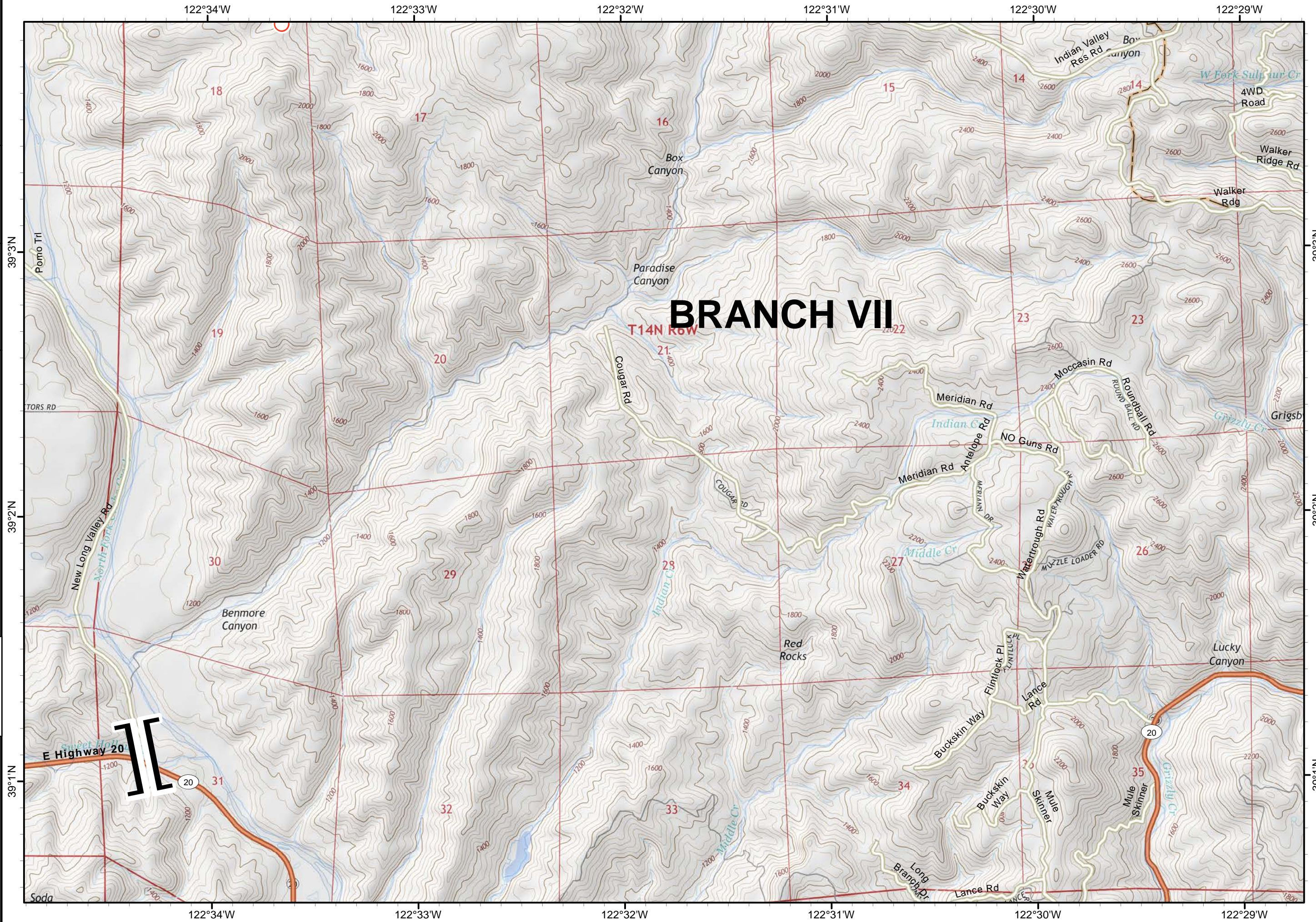
Pawnee Incident
 CA-LNU-009002
 June 25, 2018
 0700 - 0700

IAP
 Map
 Page 6

-  Branch
-  Uncontrolled Fire Edge
-  Drop Point
-  Repeater
-  Spot Fire



1:24,000
 Team 3 GIS
 NAD 83



BRANCH VII