

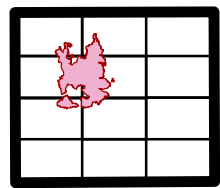


Pawnee Incident
CA-LNU-009002
June 26, 2018
0700 - 0700

IAP Map

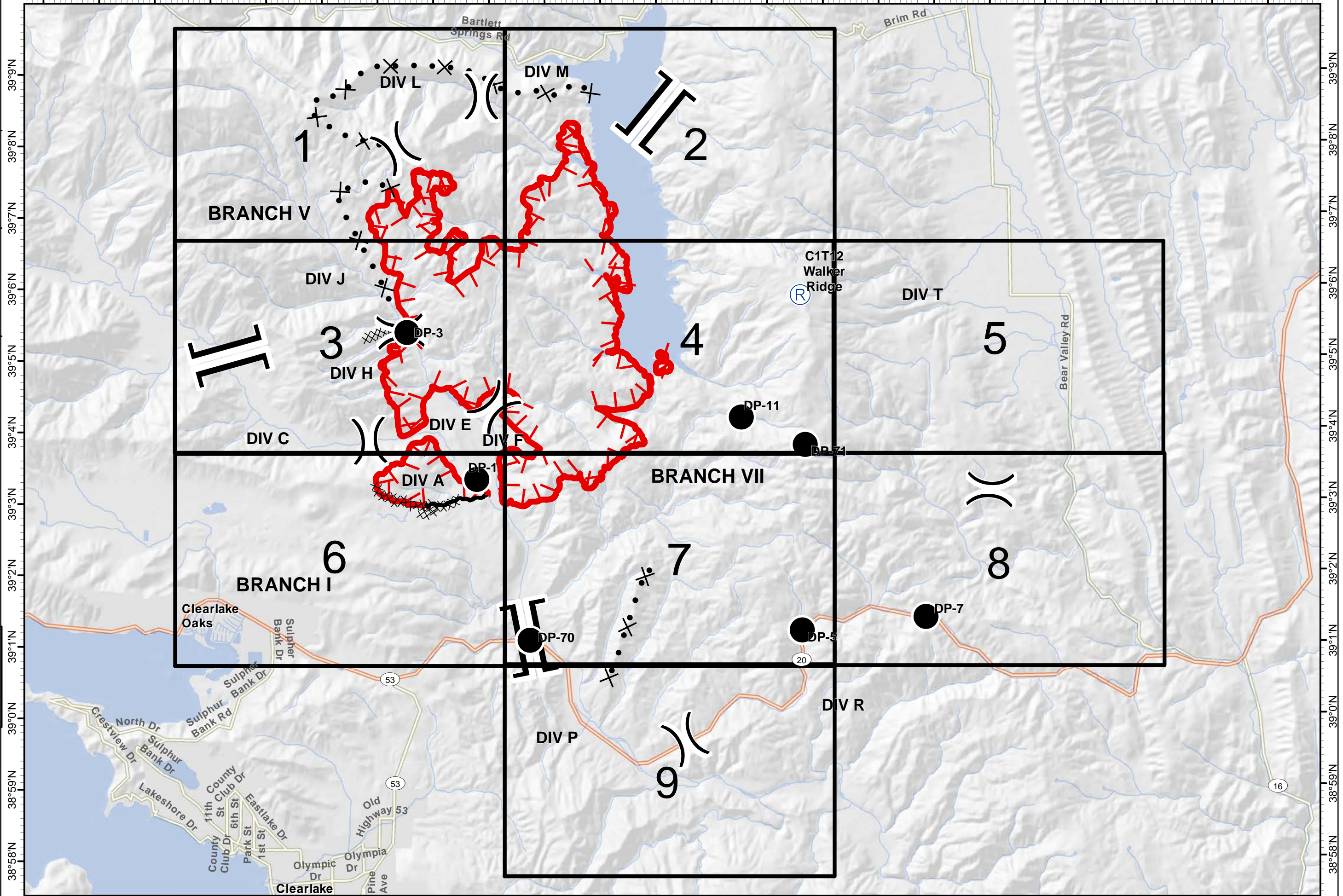
Page 0

- Branch
- Division
- Uncontrolled Fire Edge
- Completed Line
- Completed Dozer Line
- Proposed Dozer Line
- Drop Point
- Repeater



1:90,000
Team 3 GIS
NAD 83

122°43'W 122°42'W 122°41'W 122°40'W 122°39'W 122°38'W 122°37'W 122°36'W 122°35'W 122°34'W 122°33'W 122°32'W 122°31'W 122°30'W 122°29'W 122°28'W 122°27'W 122°26'W 122°25'W 122°24'W 122°23'W 122°22'W 122°21'W



122°43'W 122°42'W 122°41'W 122°40'W 122°39'W 122°38'W 122°37'W 122°36'W 122°35'W 122°34'W 122°33'W 122°32'W 122°31'W 122°30'W 122°29'W 122°28'W 122°27'W 122°26'W 122°25'W 122°24'W 122°23'W 122°22'W 122°21'W

39°9'N
39°8'N
39°7'N
39°6'N
39°5'N
39°4'N
39°3'N
39°2'N
39°1'N
39°0'N
38°59'N
38°58'N

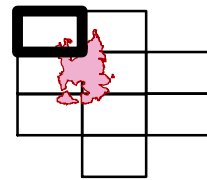
39°9'N
39°8'N
39°7'N
39°6'N
39°5'N
39°4'N
39°3'N
39°2'N
39°1'N
39°0'N
38°59'N
38°58'N



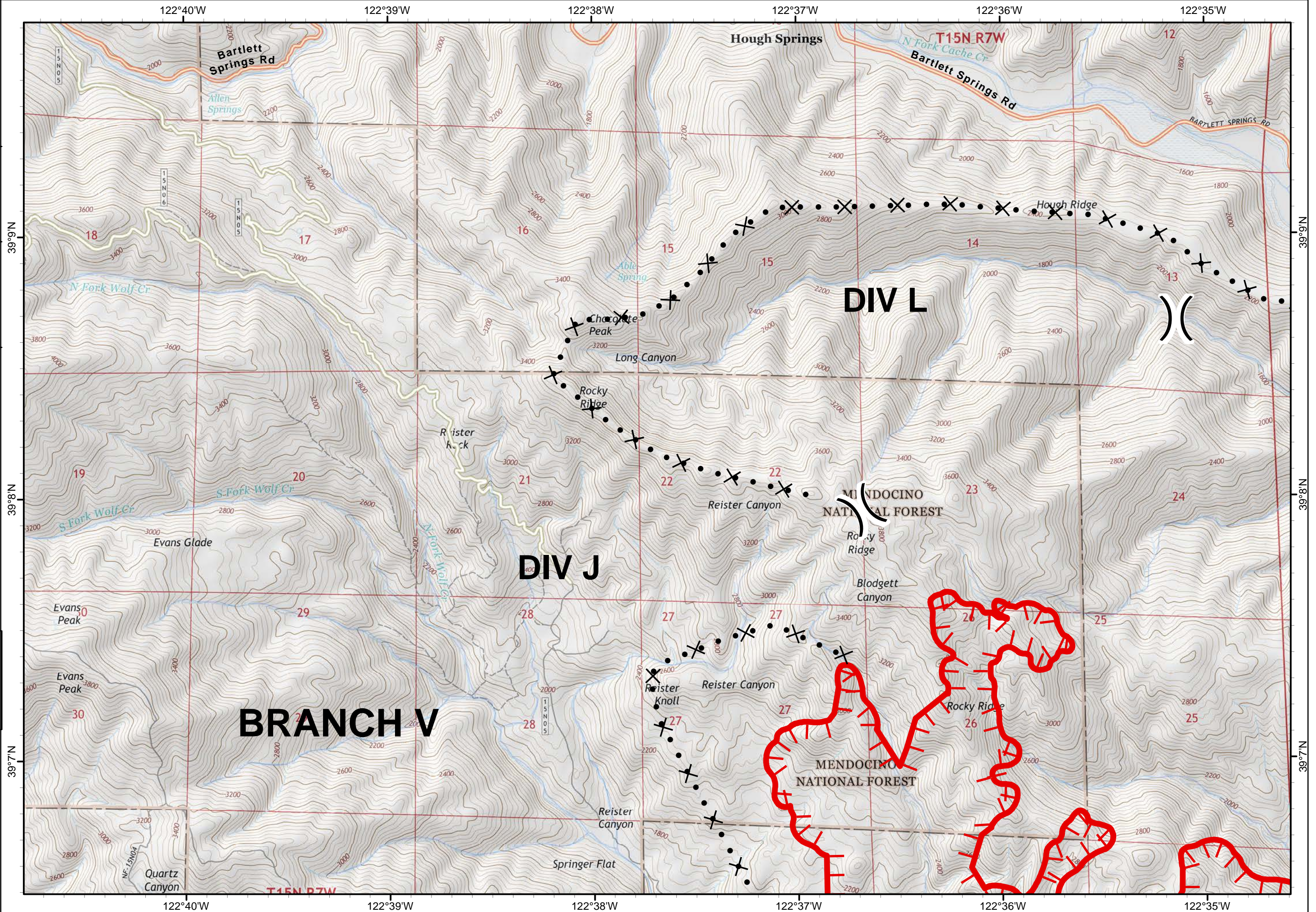
Pawnee Incident
CA-LNU-009002
June 26, 2018
0700 - 0700

IAP Map Page 1

- Branch
- Division
- Uncontrolled Fire Edge
- Completed Line
- Completed Dozer Line
- Proposed Dozer Line
- Drop Point
- Repeater



1:24,000
Team 3 GIS
NAD 83



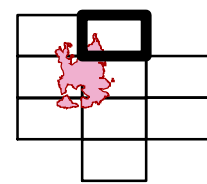


Pawnee Incident
CA-LNU-009002
June 26, 2018
0700 - 0700

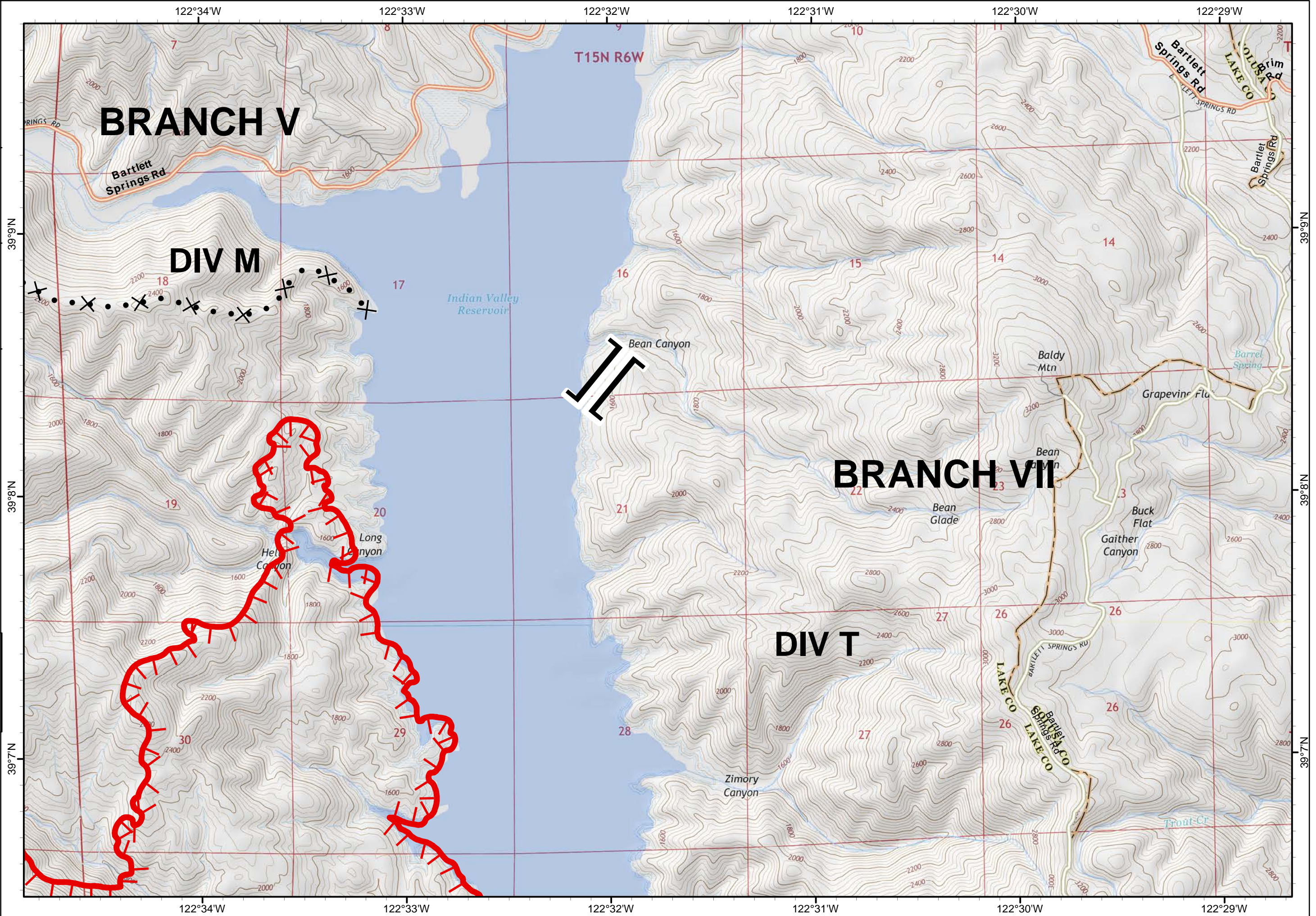
IAP Map

Page 2

- Branch
- Division
- Uncontrolled Fire Edge
- Completed Line
- Completed Dozer Line
- Proposed Dozer Line
- Drop Point
- Repeater



1:24,000
Team 3 GIS
NAD 83



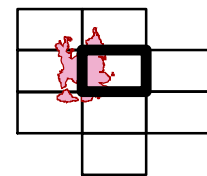


Pawnee Incident
CA-LNU-009002
June 26, 2018
0700 - 0700

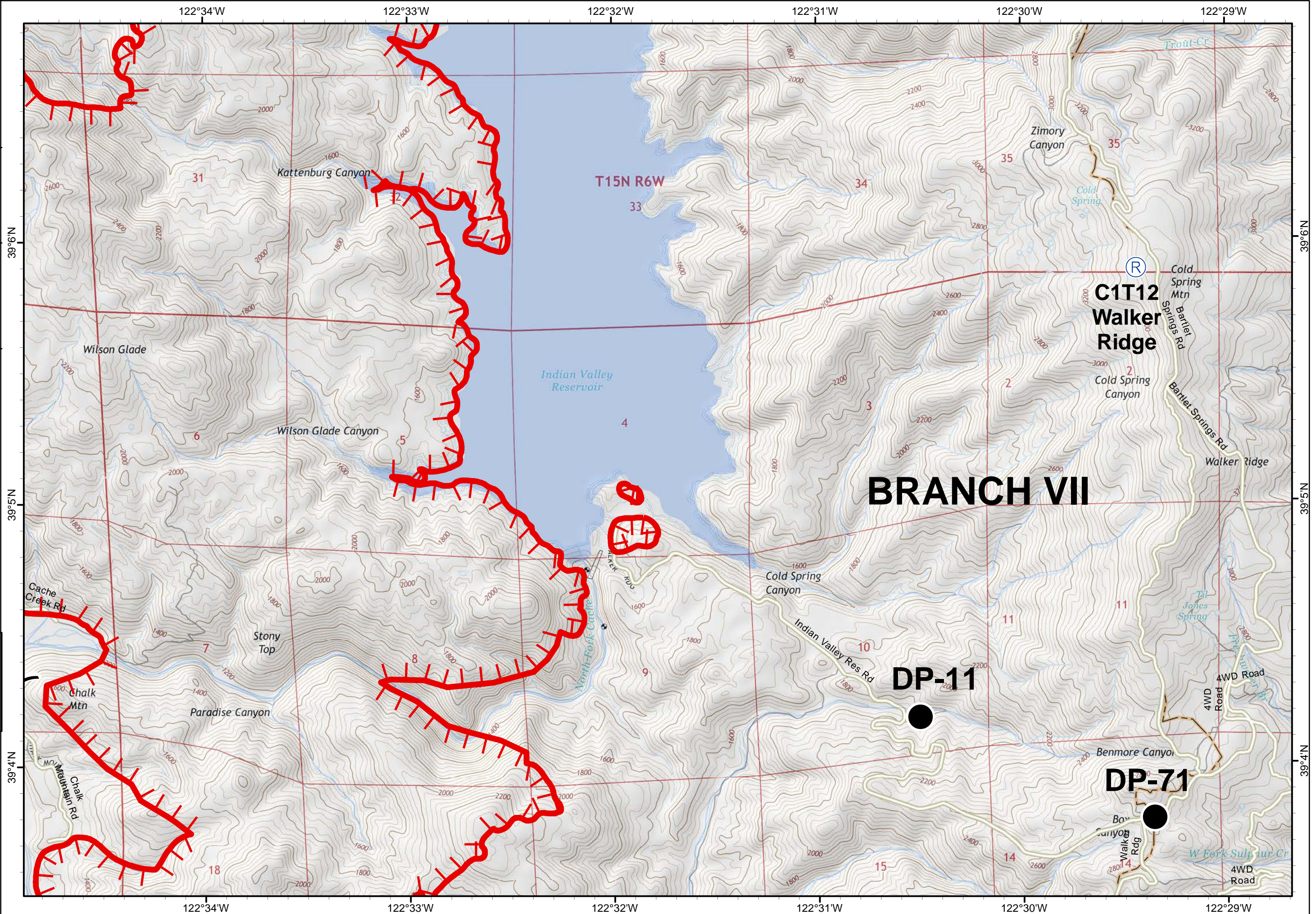
IAP Map

Page 4

- Branch
- Division
- Uncontrolled Fire Edge
- Completed Line
- Completed Dozer Line
- Proposed Dozer Line
- Drop Point
- Repeater



1:24,000
Team 3 GIS
NAD 83



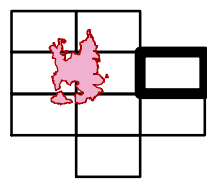


Pawnee Incident
CA-LNU-009002
June 26, 2018
0700 - 0700

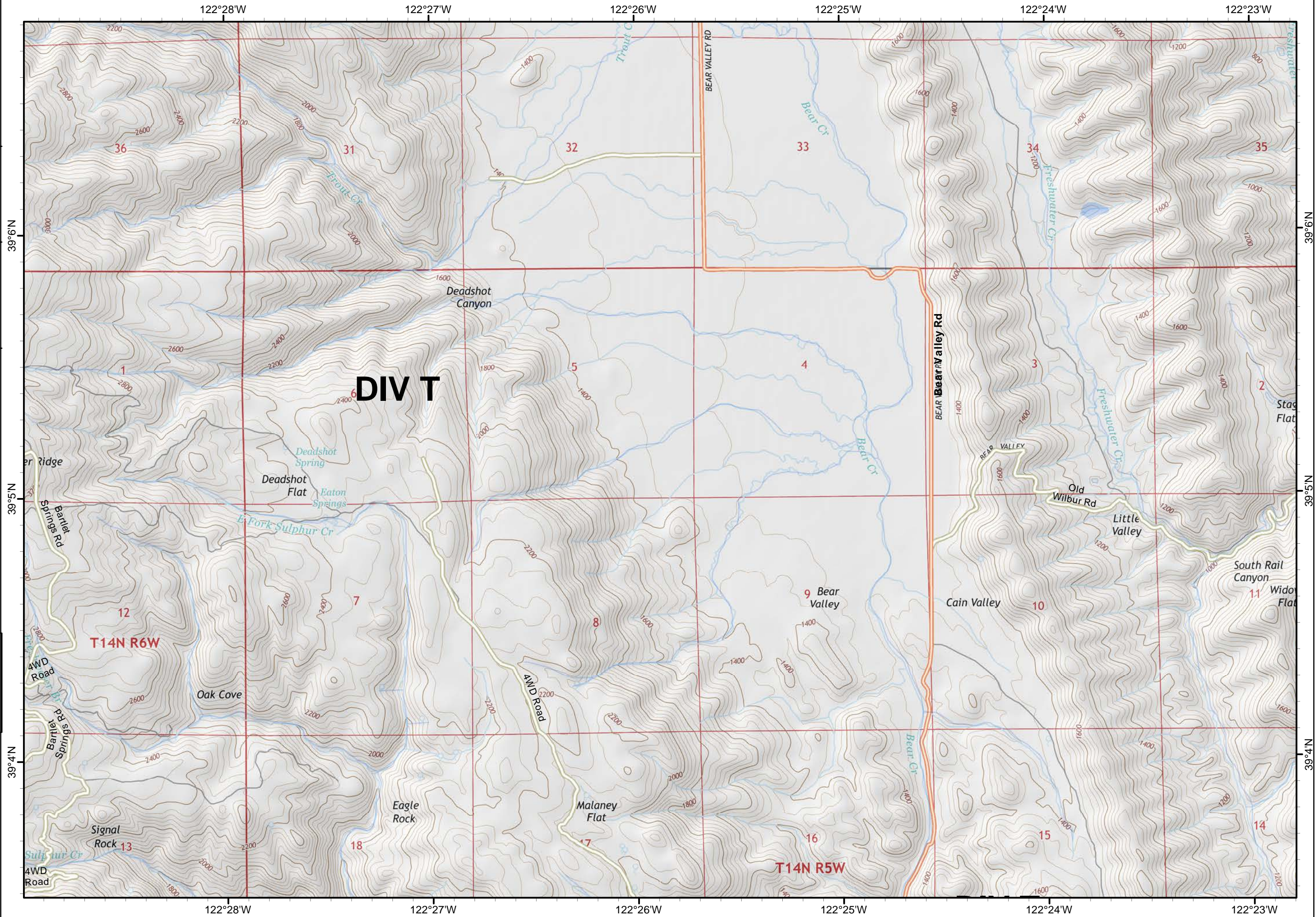
IAP Map

Page 5

- Branch
- Division
- Uncontrolled Fire Edge
- Completed Line
- Completed Dozer Line
- Proposed Dozer Line
- Drop Point
- Repeater



1:24,000
Team 3 GIS
NAD 83



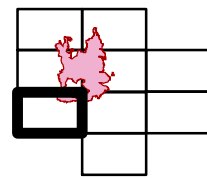


Pawnee Incident
CA-LNU-009002
June 26, 2018
0700 - 0700

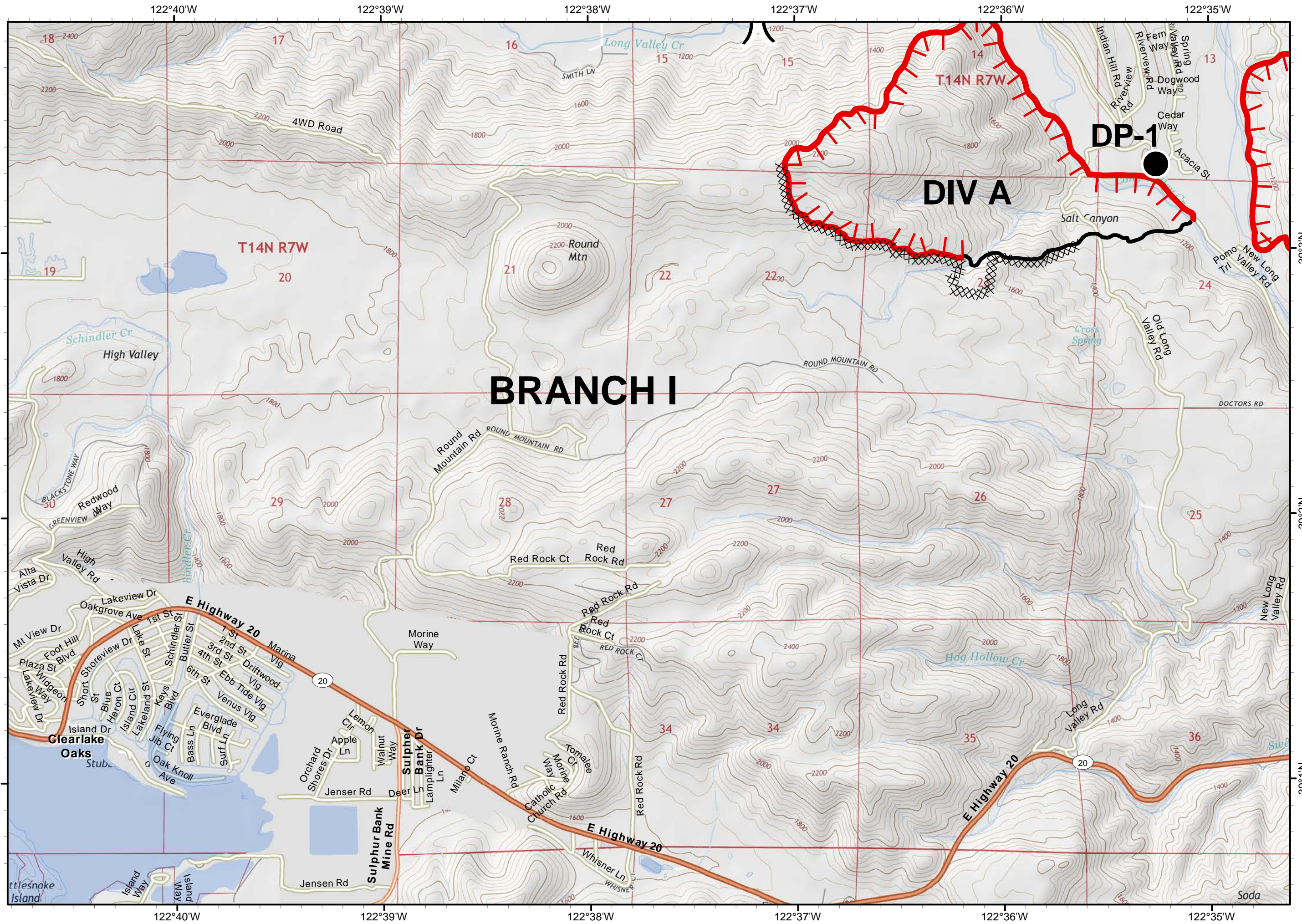
IAP Map

Page 6

- Branch
- Division
- Uncontrolled Fire Edge
- Completed Line
- Completed Dozer Line
- Proposed Dozer Line
- Drop Point
- Repeater



1:24,000
Team 3 GIS
NAD 83

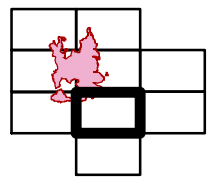




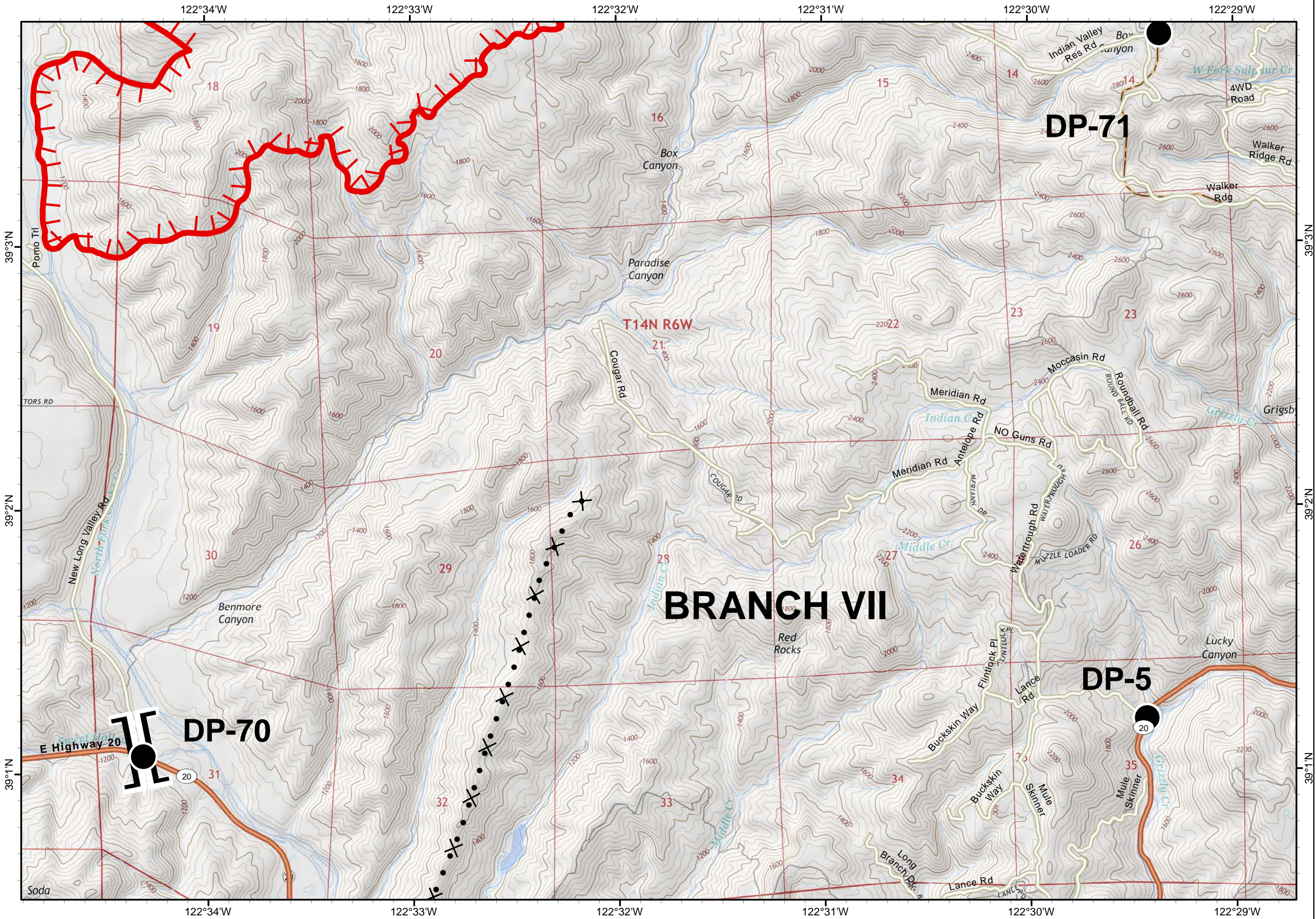
Pawnee Incident
CA-LNU-009002
June 26, 2018
0700 - 0700

IAP Map Page 7

- Branch
- Division
- Uncontrolled Fire Edge
- Completed Line
- Completed Dozer Line
- Proposed Dozer Line
- Drop Point
- Repeater



1:24,000
Team 3 GIS
NAD 83



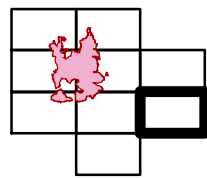


Pawnee Incident
CA-LNU-009002
June 26, 2018
0700 - 0700

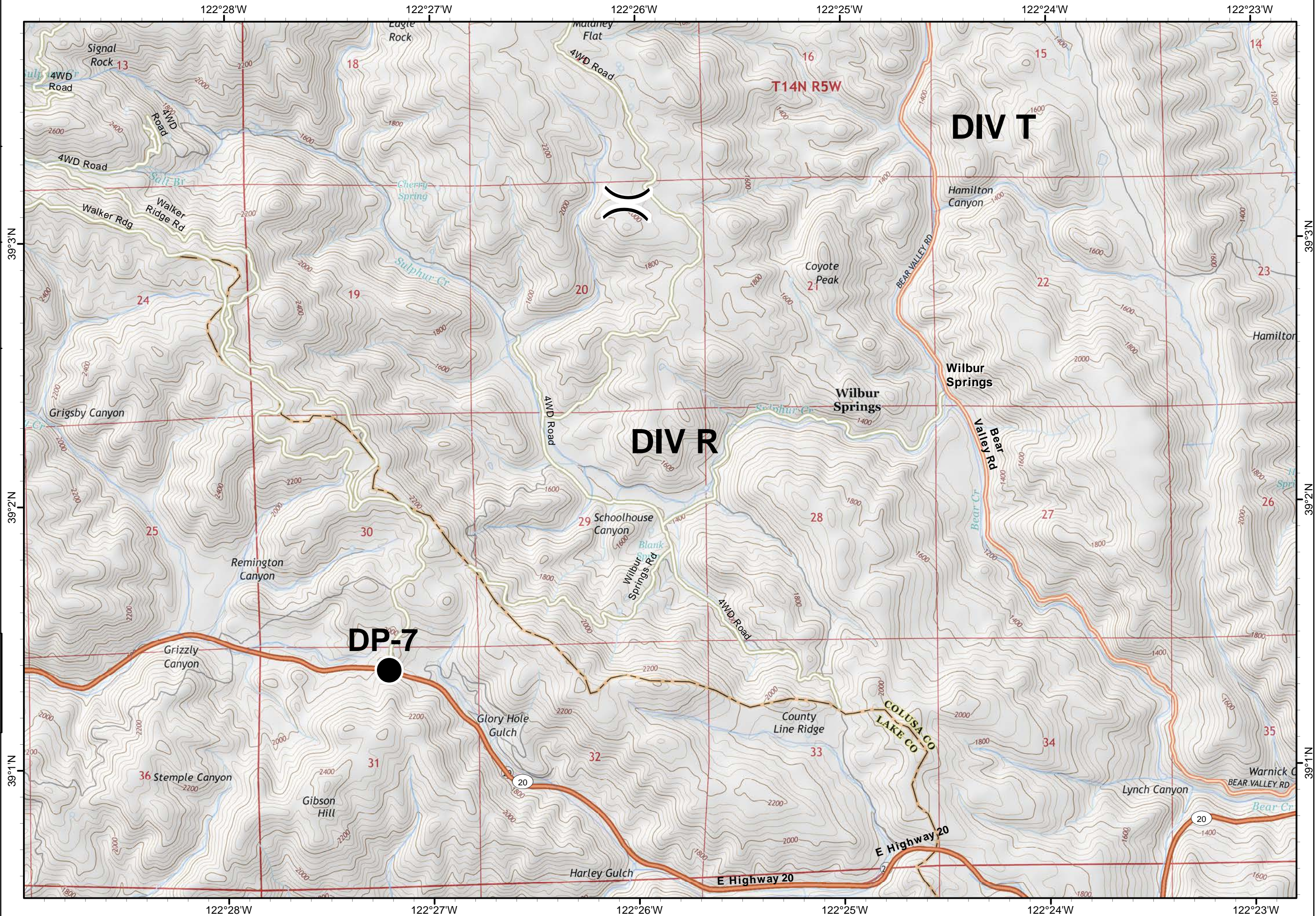
IAP Map

Page 8

- Branch
- Division
- Uncontrolled Fire Edge
- Completed Line
- Completed Dozer Line
- Proposed Dozer Line
- Drop Point
- Repeater



1:24,000
Team 3 GIS
NAD 83

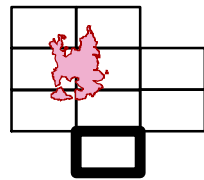




Pawnee Incident
CA-LNU-009002
June 26, 2018
0700 - 0700

IAP Map Page 9

- Branch
- Division
- Uncontrolled Fire Edge
- Completed Line
- Completed Dozer Line
- Proposed Dozer Line
- Drop Point
- Repeater



1:24,000
Team 3 GIS
NAD 83

