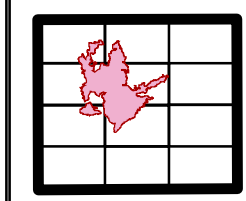


**Pawnee Incident**  
**CA-LNU-009002**  
**June 27, 2018**  
**0700-0700**

**IAP**  
**Map**

**Page 0**  
 Branch Break

- (X) Division Break
- Drop Point
- Helispot
- Ⓡ Repeater
- Spot Fire
- Ⓜ Water Source
- ┌ Uncontrolled Fire Edge
- Completed Line
- ⊗ Completed Dozer Line
- H Completed Hand Line
- ⊗ Proposed Dozer Line
- Ⓜ Life Hazard
- ▬ Life Hazard Zone



**1:90,000**  
**Team 3 GIS**  
**NAD 83**

Travel map on second page of IAP map packet

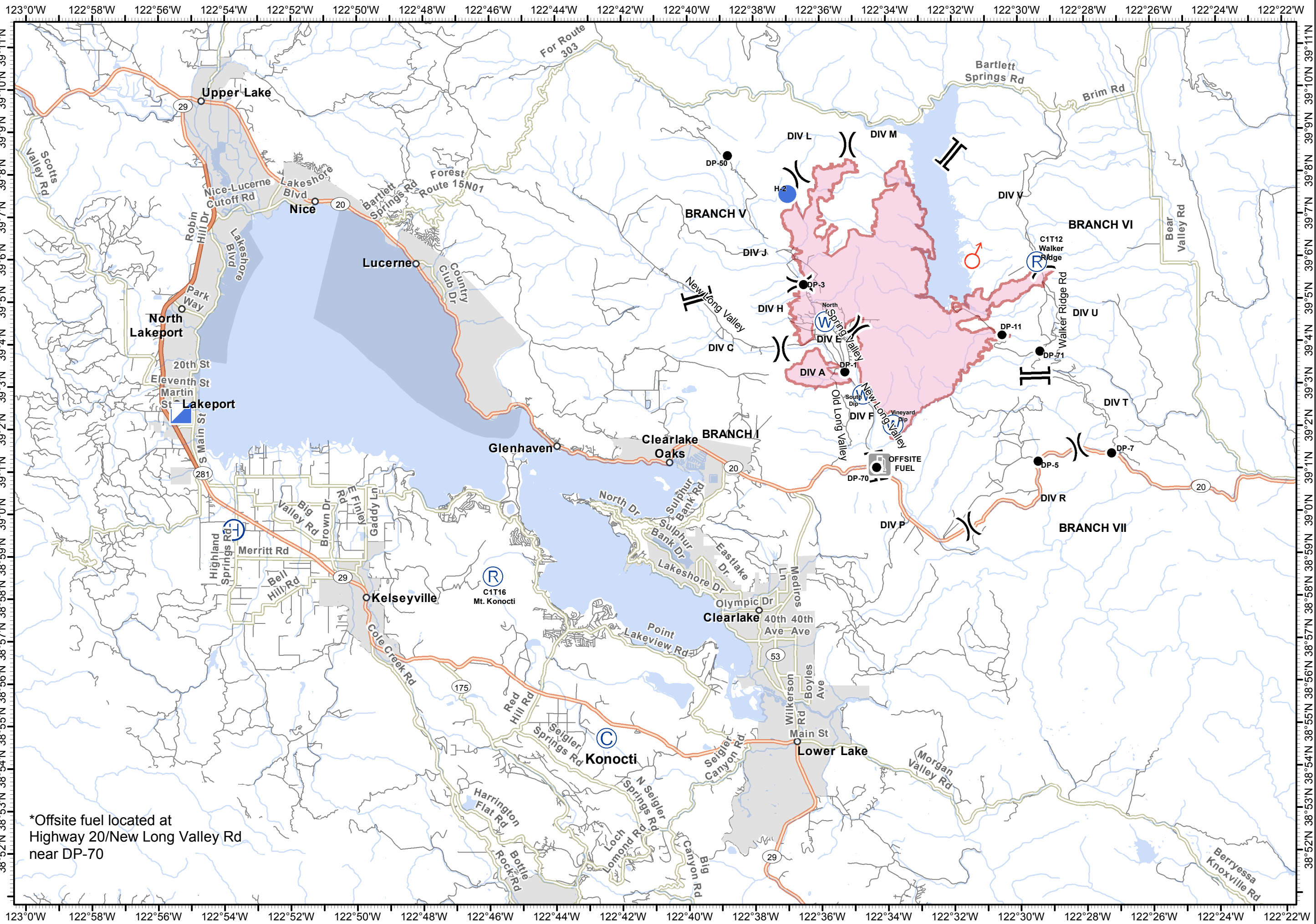


**Pawnee Incident**  
CA-LNU-009002  
June 27, 2018  
0700 - 0700

# Travel Map

- Camp
- Drop Point
- Helibase
- Helispot
- Incident Command Post
- Repeater
- Spot Fire
- Water Source
- Fuel
- Division Break
- Branch Break
- Wildfire Daily Fire Perimeter

**1:150,000**  
Team 3 GIS  
NAD 83



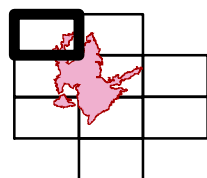
\*Offsite fuel located at Highway 20/New Long Valley Rd near DP-70



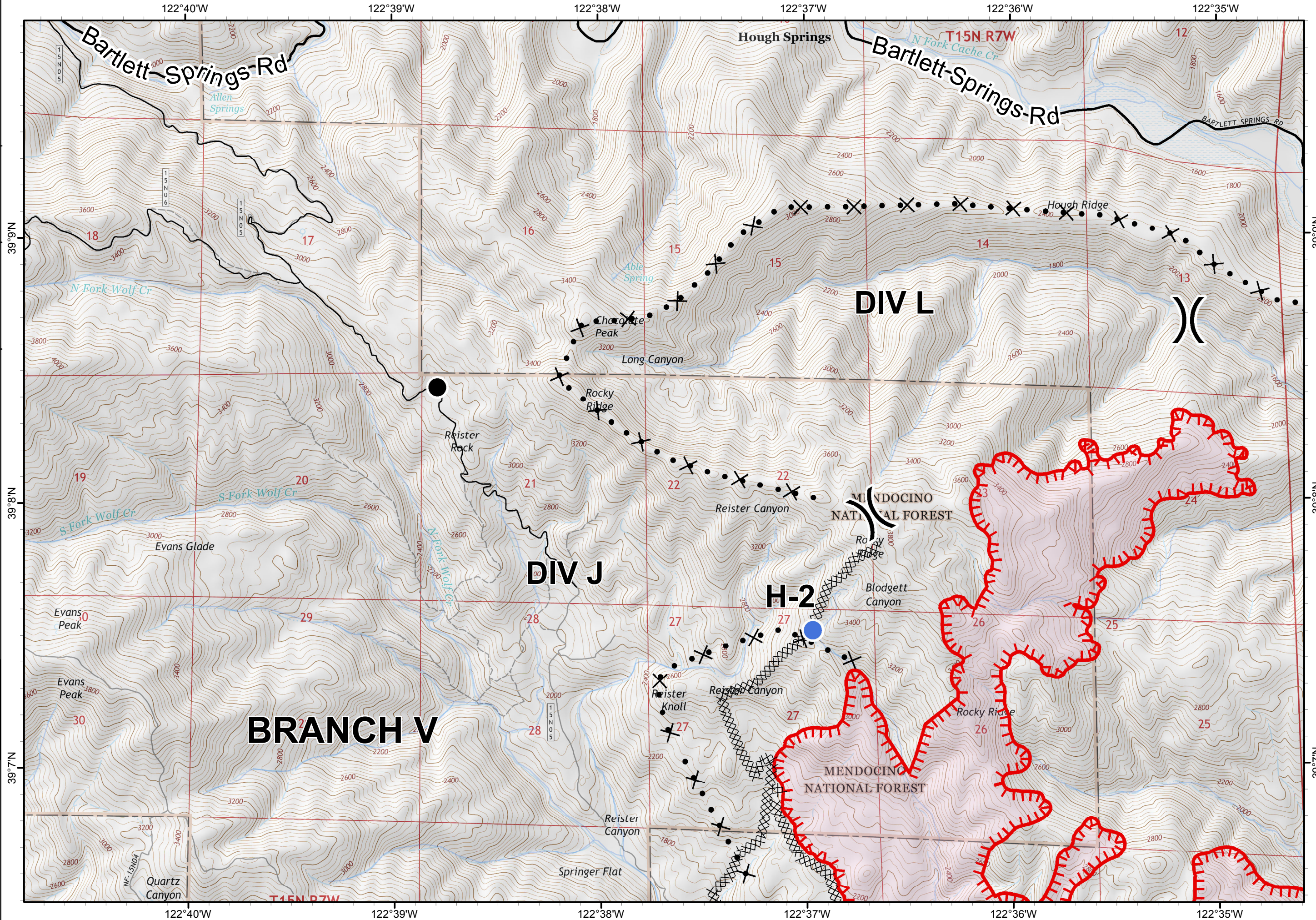
**Pawnee Incident**  
**CA-LNU-009002**  
**June 27, 2018**  
**0700-0700**

**IAP**  
**Map**  
**Page 1**

- Division Break
- Drop Point
- Helispot
- Uncontrolled Fire Edge
- Completed Dozer Line
- Proposed Dozer Line






**1:24,000**  
**Team 3 GIS**  
**NAD 83**

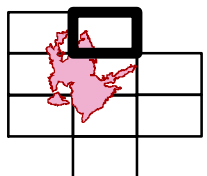




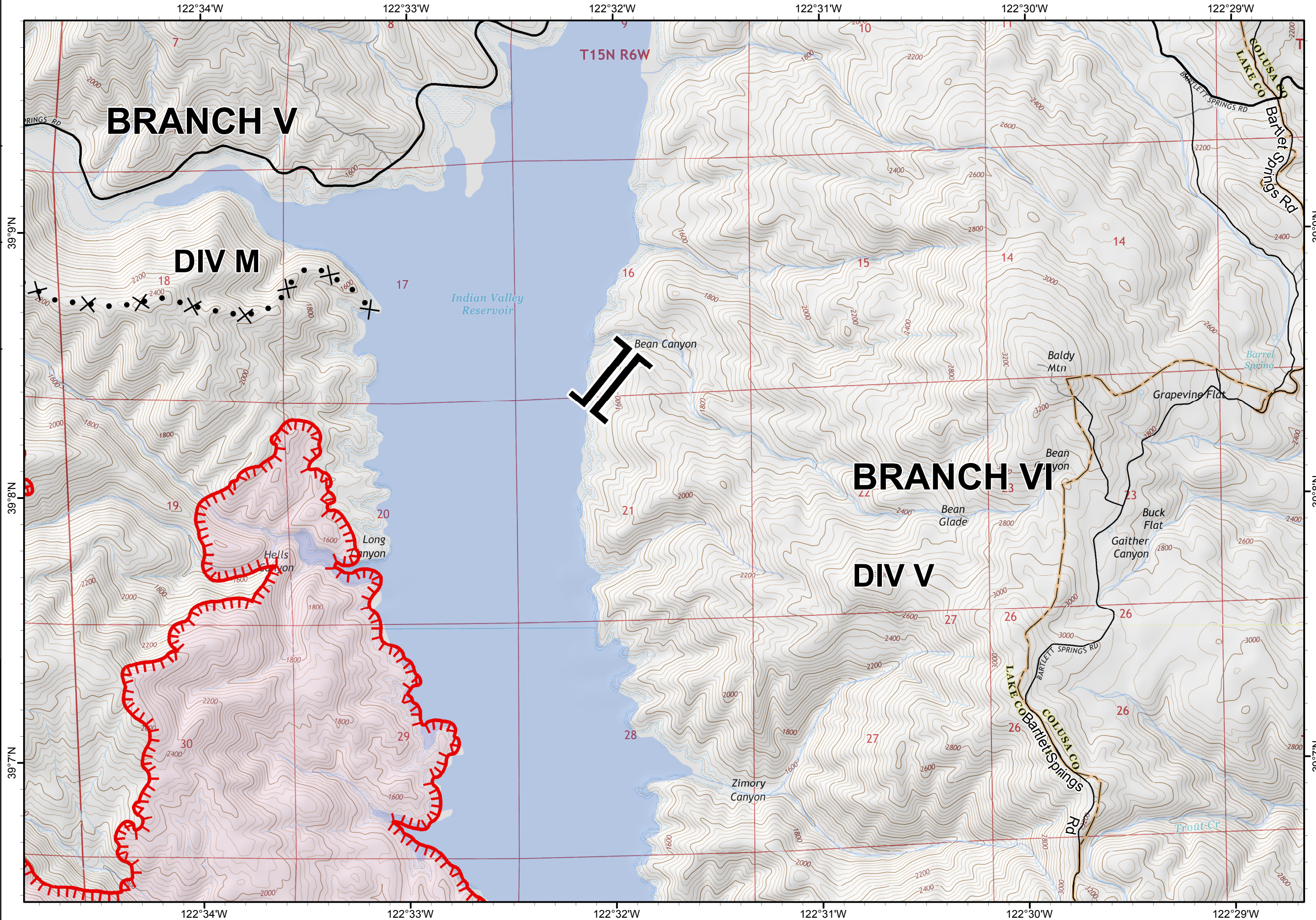
**Pawnee Incident**  
**CA-LNU-009002**  
**June 27, 2018**  
**0700-0700**

**IAP**  
**Map**  
**Page 2**

-  Branch Break
-  Uncontrolled Fire Edge
-  Proposed Dozer Line



**1:24,000**  
**Team 3 GIS**  
**NAD 83**

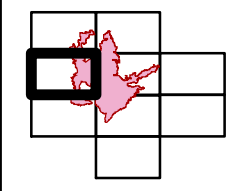




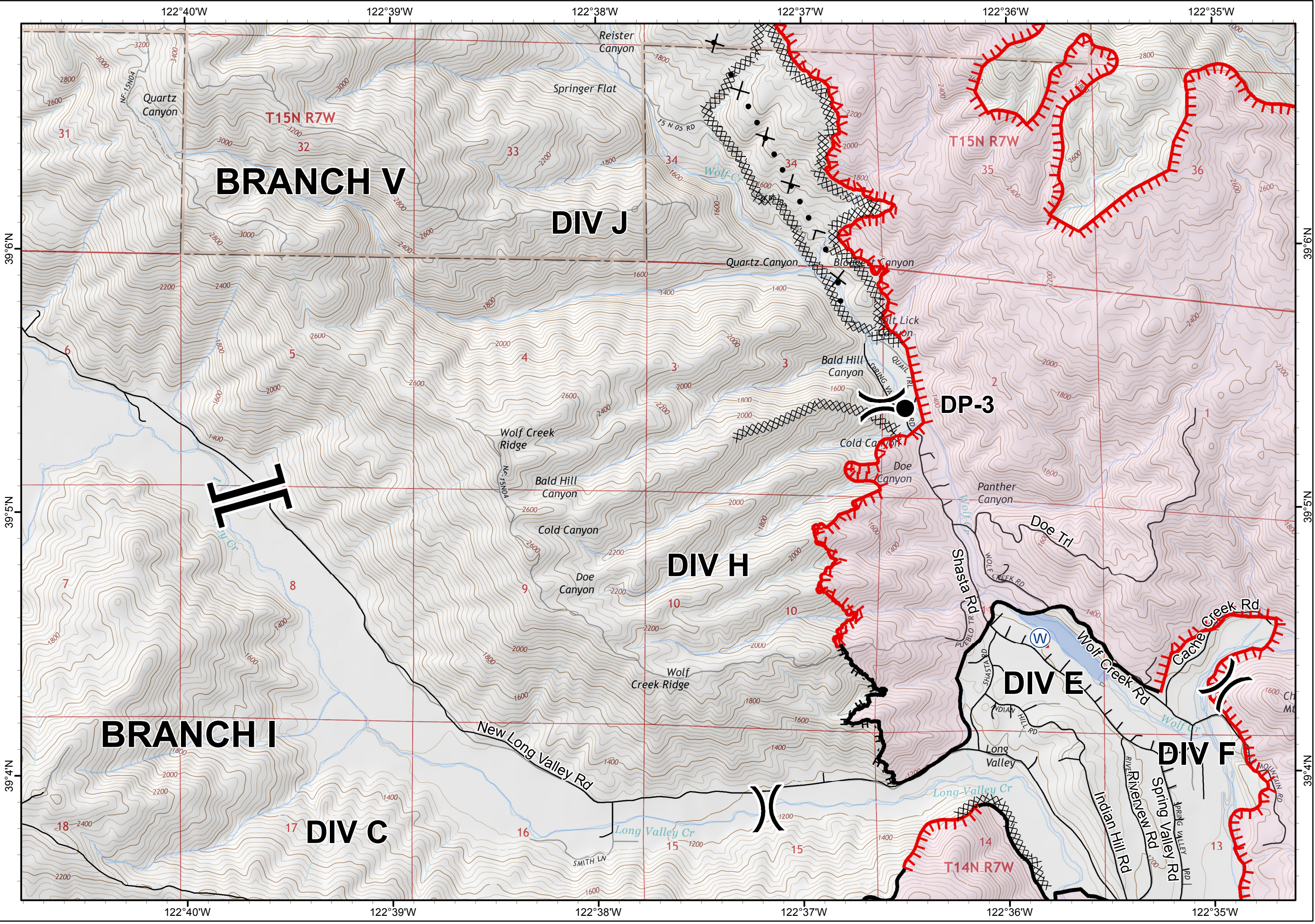
**Pawnee Incident**  
**CA-LNU-009002**  
**June 27, 2018**  
**0700-0700**

**IAP**  
**Map**  
**Page 3**

- Branch Break
- Division Break
- Drop Point
- Water Source
- Uncontrolled Fire Edge
- Completed Line
- Completed Dozer Line
- Completed Hand Line
- Proposed Dozer Line



**1:24,000**  
**Team 3 GIS**  
**NAD 83**


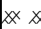




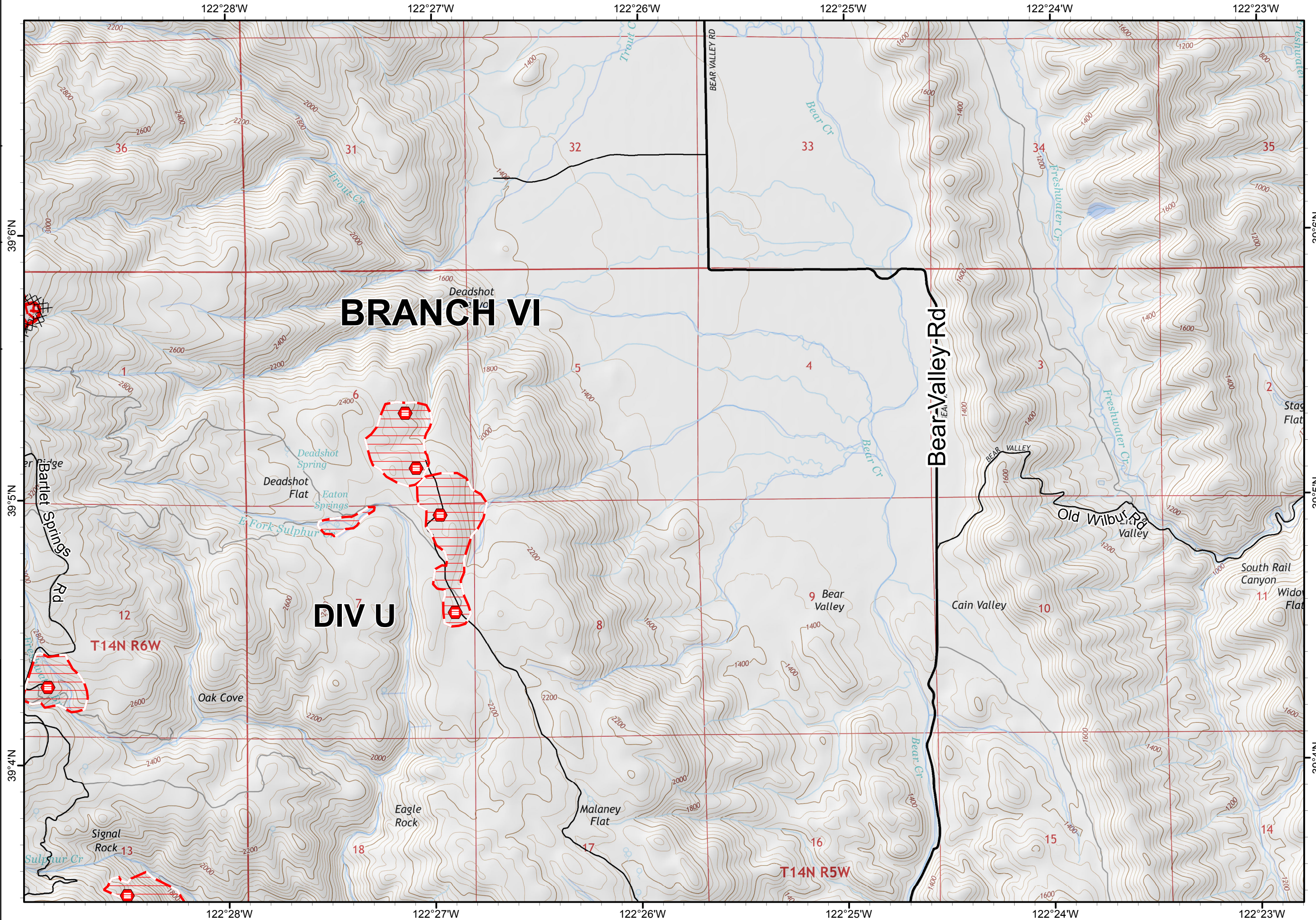
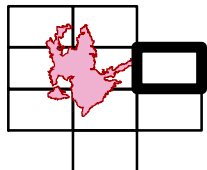




**Pawnee Incident**  
**CA-LNU-009002**  
**June 27, 2018**  
**0700-0700**

**IAP**  
**Map**  
**Page 5**

-  Uncontrolled Fire Edge
-  Completed Dozer Line
-  Life Hazard
-  Life Hazard Zone

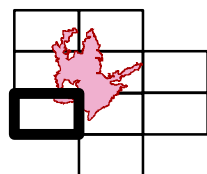




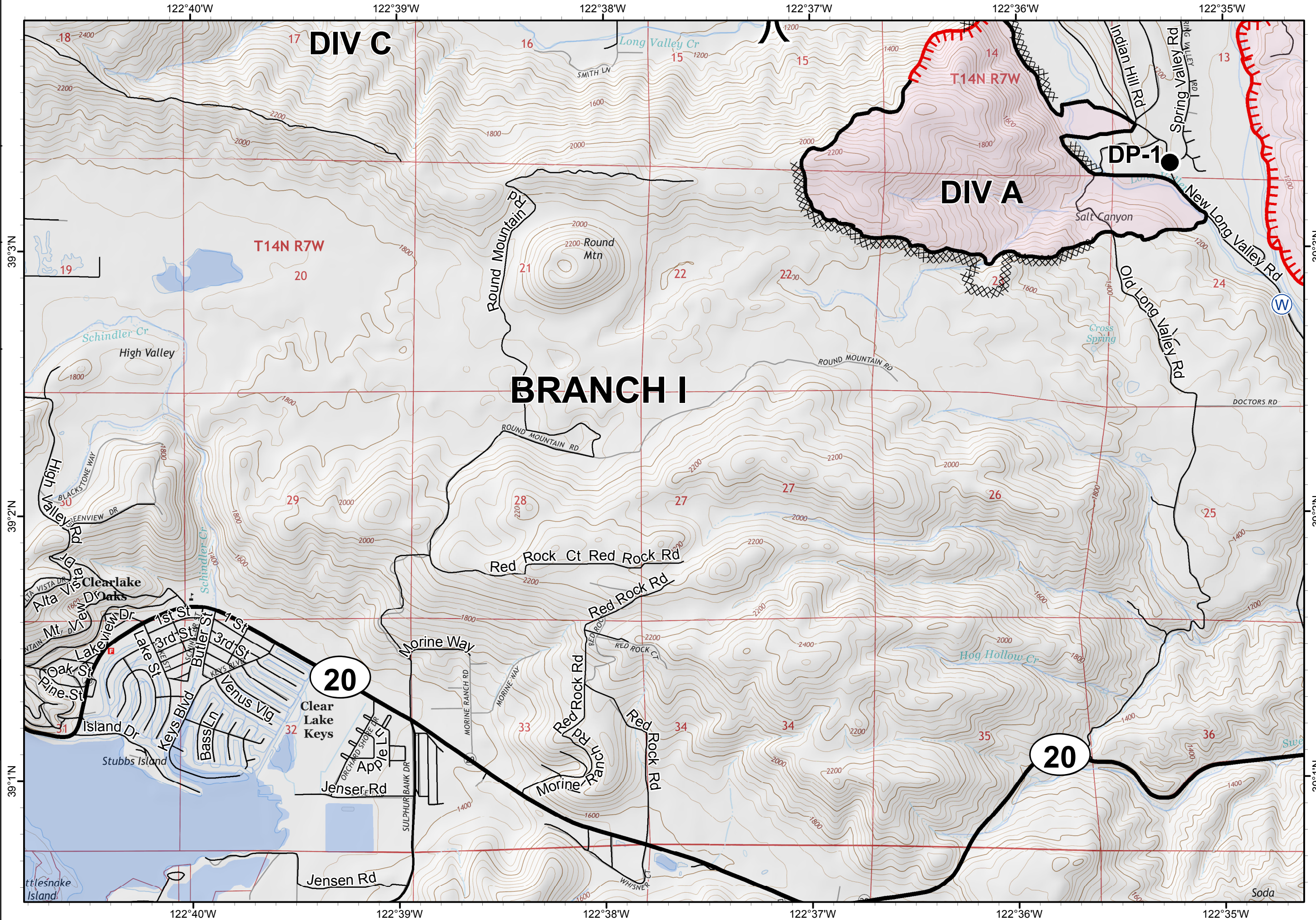
Pawnee Incident  
CA-LNU-009002  
June 27, 2018  
0700-0700

IAP  
Map  
Page 6

- ( ) Division Break
- Drop Point
- (W) Water Source
- Uncontrolled Fire Edge
- Completed Line
- XX XX Completed Dozer Line



1:24,000  
Team 3 GIS  
NAD 83







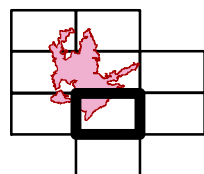




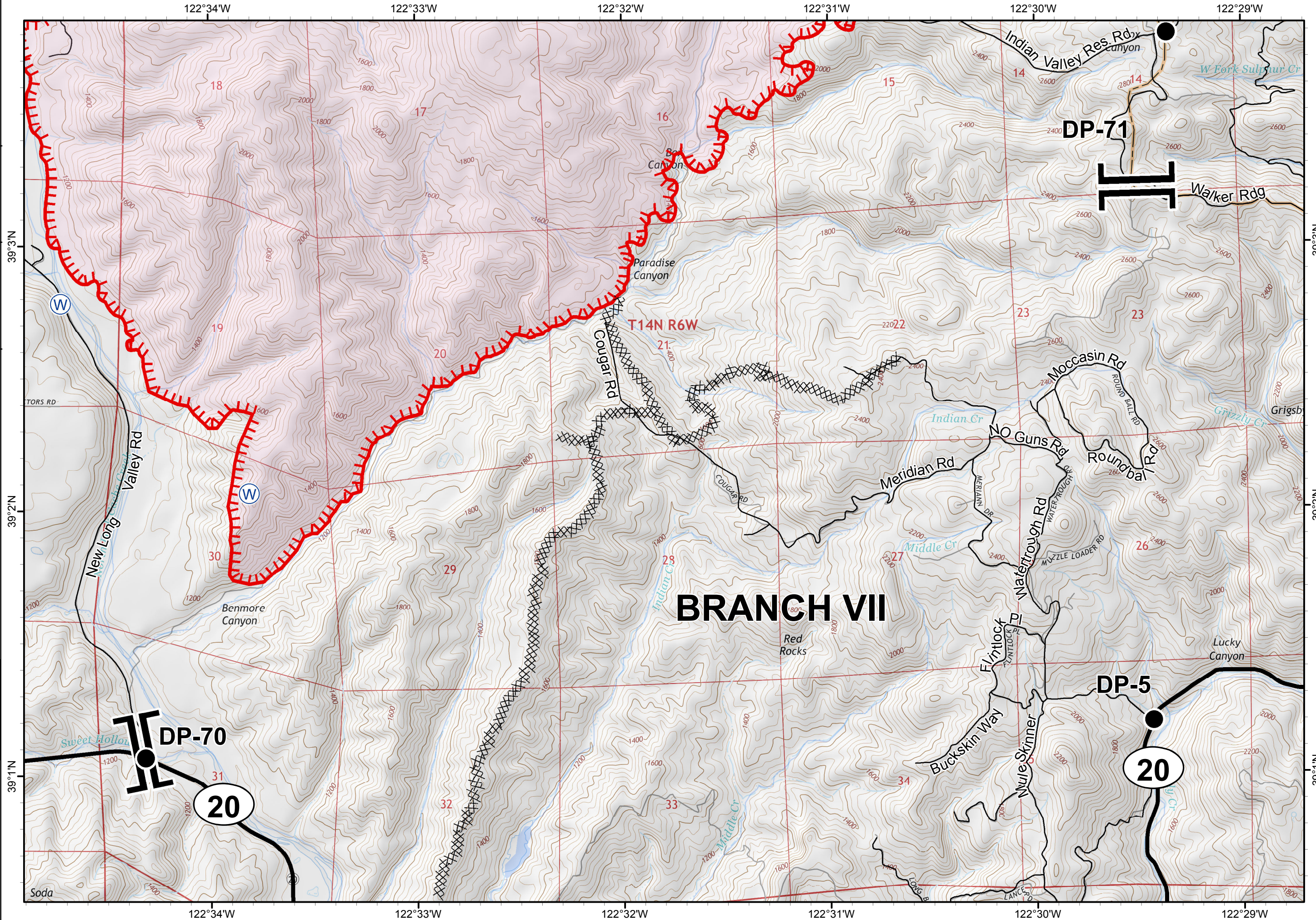
**Pawnee Incident**  
**CA-LNU-009002**  
**June 27, 2018**  
**0700-0700**

**IAP**  
**Map**  
**Page 7**

-  Branch Break
-  Drop Point
-  Water Source
-  Uncontrolled Fire Edge
-  Completed Dozer Line



**1:24,000**  
**Team 3 GIS**  
**NAD 83**

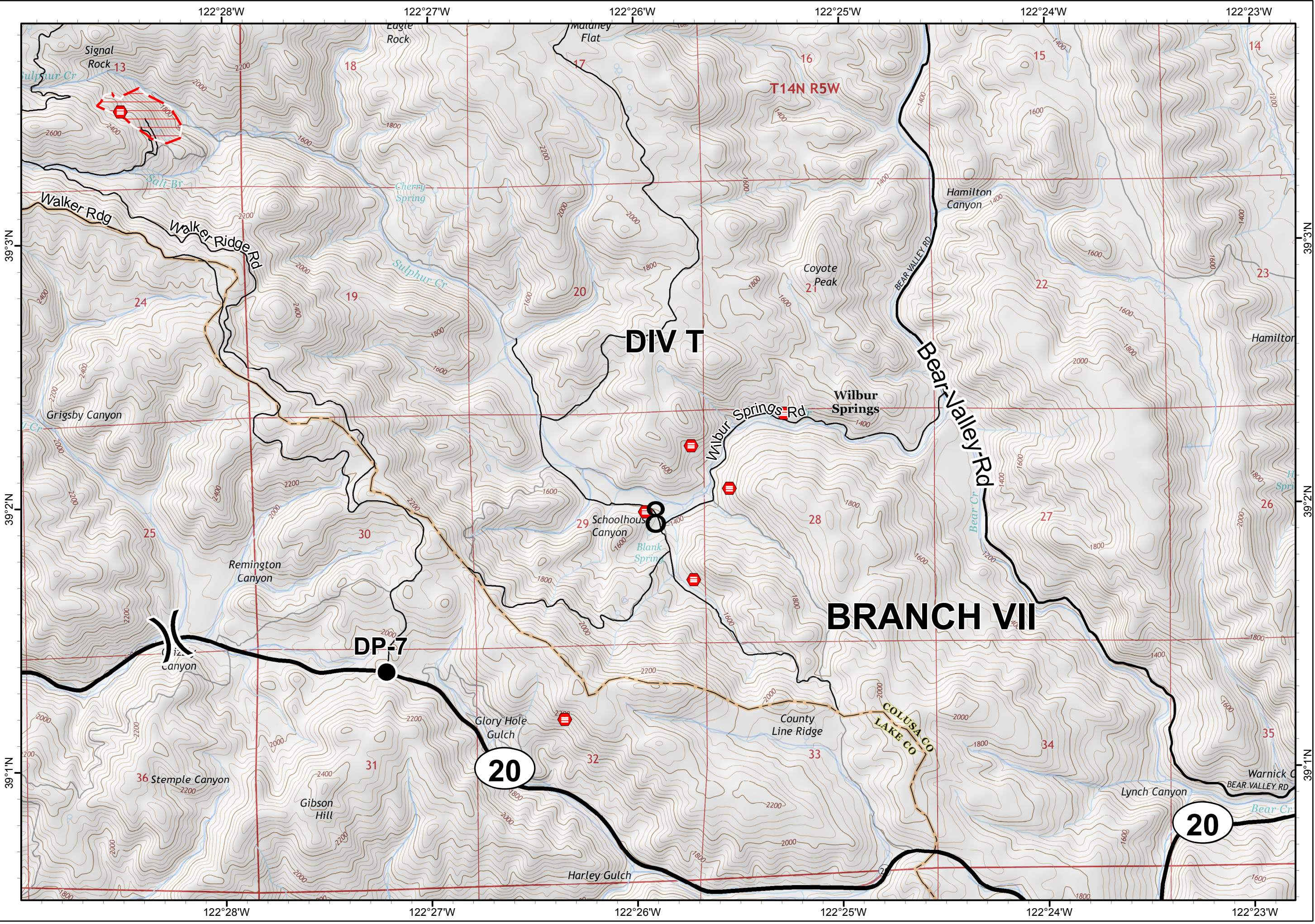
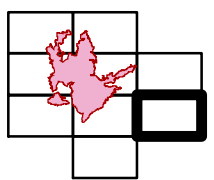




**Pawnee Incident**  
**CA-LNU-009002**  
**June 27, 2018**  
**0700-0700**

**IAP**  
**Map**  
**Page 8**

- ( ) Division Break
- Drop Point
- Life Hazard
- Life Hazard Zone



**DIV T**

**BRANCH VII**

**20**

**20**

**DP-7**

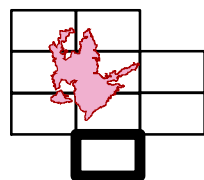
**T14N R5W**



**Pawnee Incident**  
**CA-LNU-009002**  
**June 27, 2018**  
**0700-0700**

**IAP**  
**Map**  
**Page 9**

) Division Break  
XX Completed Dozer Line



**1:24,000**  
**Team 3 GIS**  
**NAD 83**

