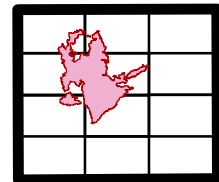




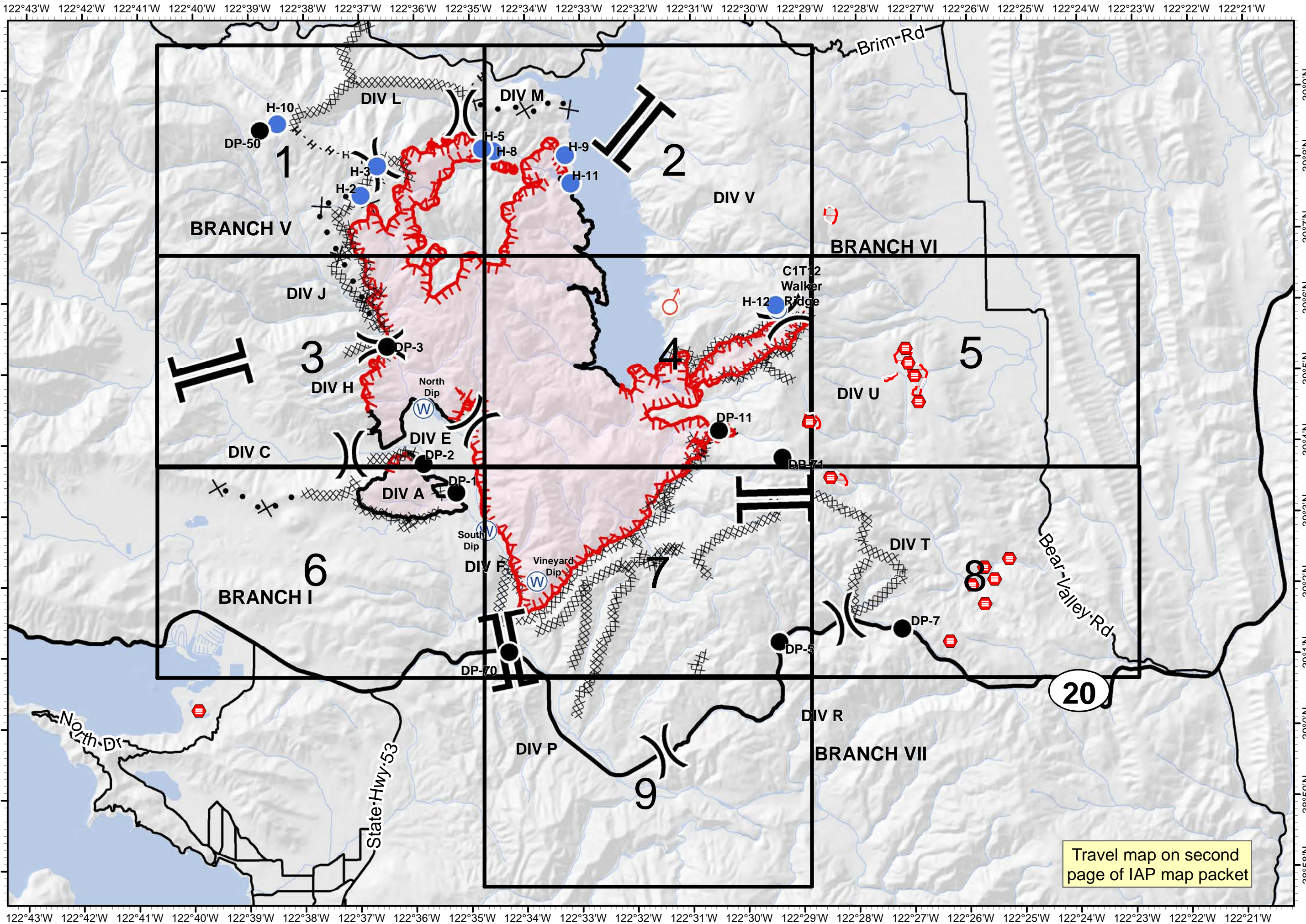
Pawnee Incident  
CA-LNU-009002  
June 28, 2018  
0700-0700

IAP  
Map  
Page 0

- Branch Break
- Division Break
- Drop Point
- Helispot
- Repeater
- Spot Fire
- Water Source
- Uncontrolled Fire Edge
- Completed Line
- Completed Dozer Line
- Completed Hand Line
- Proposed Dozer Line
- Life Hazard
- Life Hazard Zone



1:90,000  
Team 3 GIS  
NAD 83





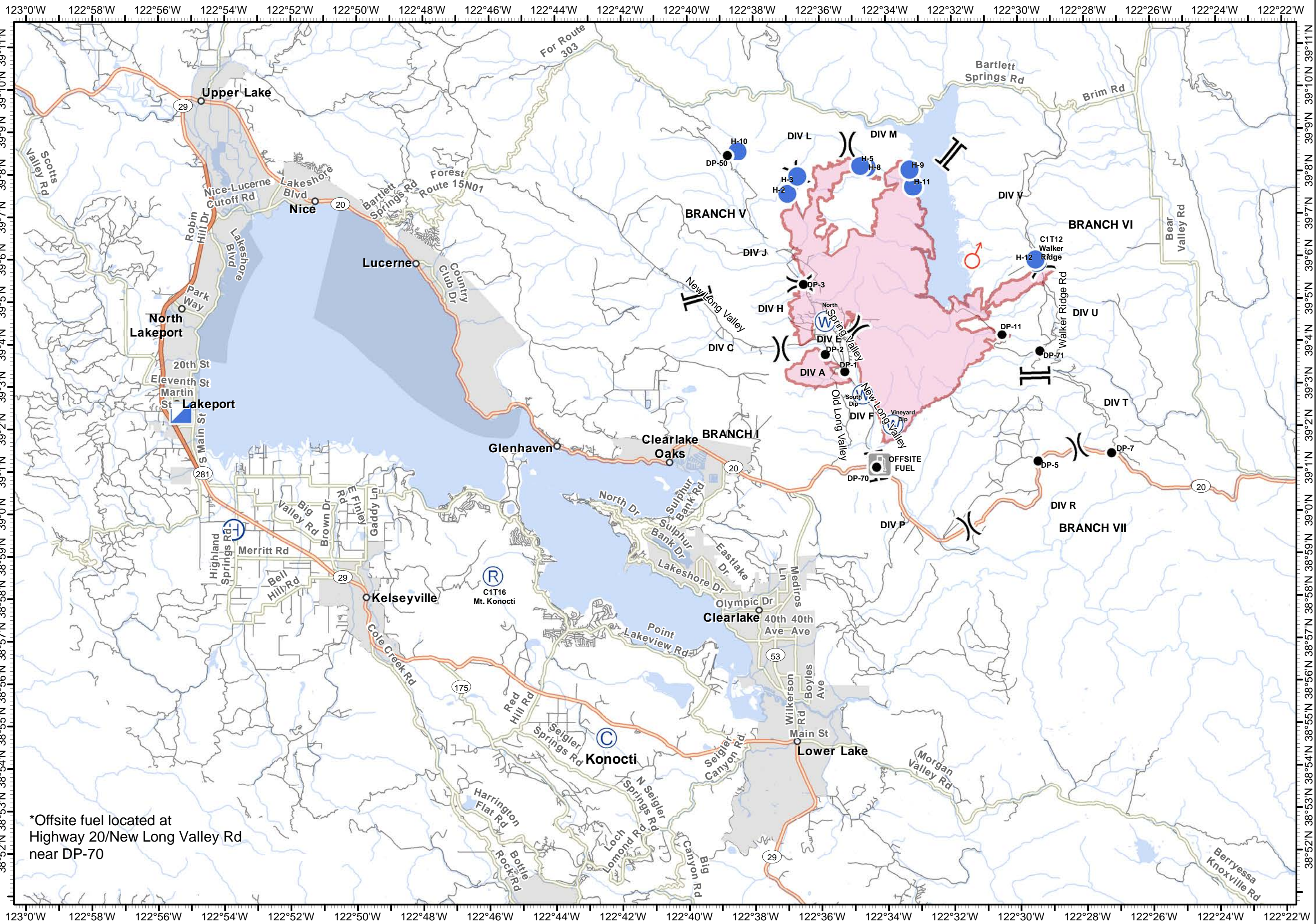
Pawnee Incident  
CA-LNU-009002  
June 28, 2018  
0700 - 0700

# Travel Map

- Camp
- Drop Point
- Helibase
- Helispot
- Incident Command Post
- Repeater
- Spot Fire
- Water Source
- Fuel
- Division Break
- Branch Break
- Wildfire Daily Fire Perimeter



1:150,000  
Team 3 GIS  
NAD 83



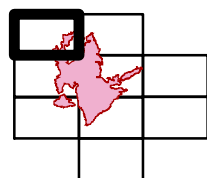
\*Offsite fuel located at  
Highway 20/New Long Valley Rd  
near DP-70



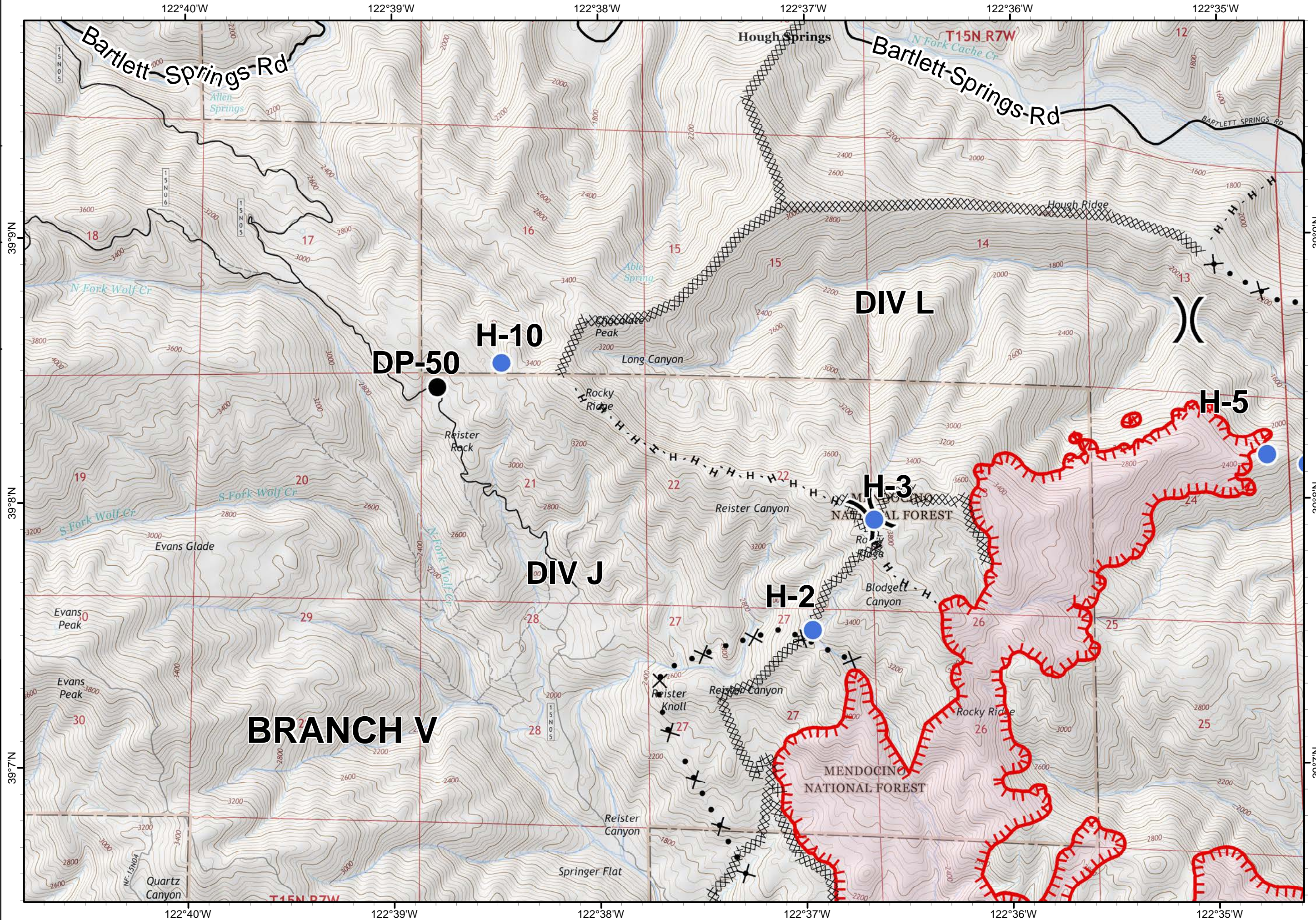
Pawnee Incident  
CA-LNU-009002  
June 28, 2018  
0700-0700

IAP  
Map  
Page 1

- )) Division Break
- Drop Point
- Helispot
- ┌ Uncontrolled Fire Edge
- XX Completed Dozer Line
- H - Completed Hand Line
- X• Proposed Dozer Line



1:24,000  
Team 3 GIS  
NAD 83

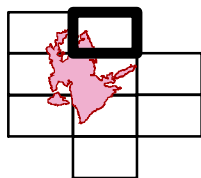




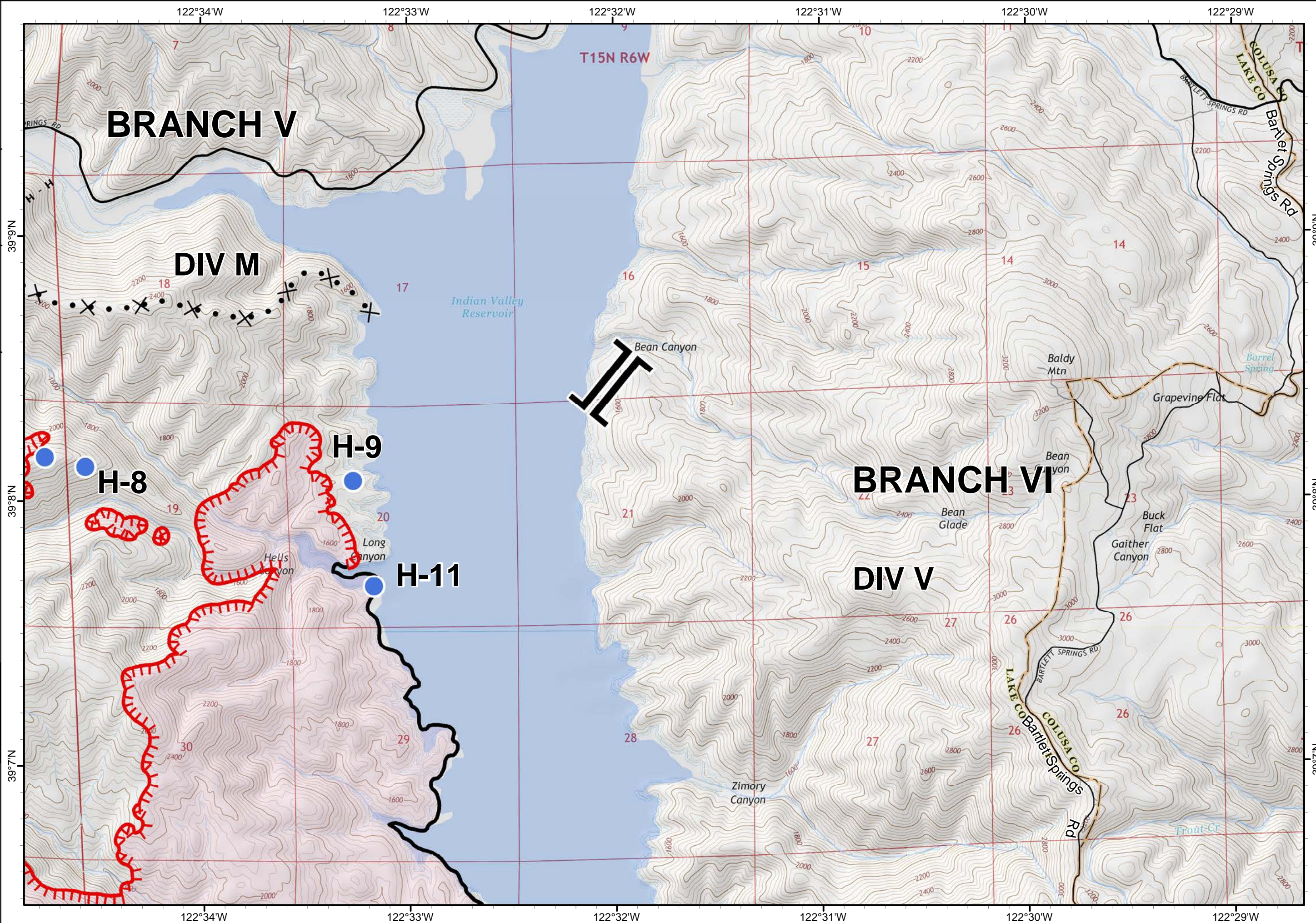
Pawnee Incident  
CA-LNU-009002  
June 28, 2018  
0700-0700

IAP  
Map  
Page 2

- Branch Break
- Helispot
- Uncontrolled Fire Edge
- Completed Line
- Completed Hand Line
- Proposed Dozer Line



1:24,000  
Team 3 GIS  
NAD 83

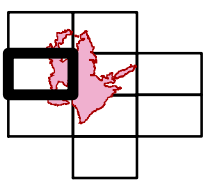




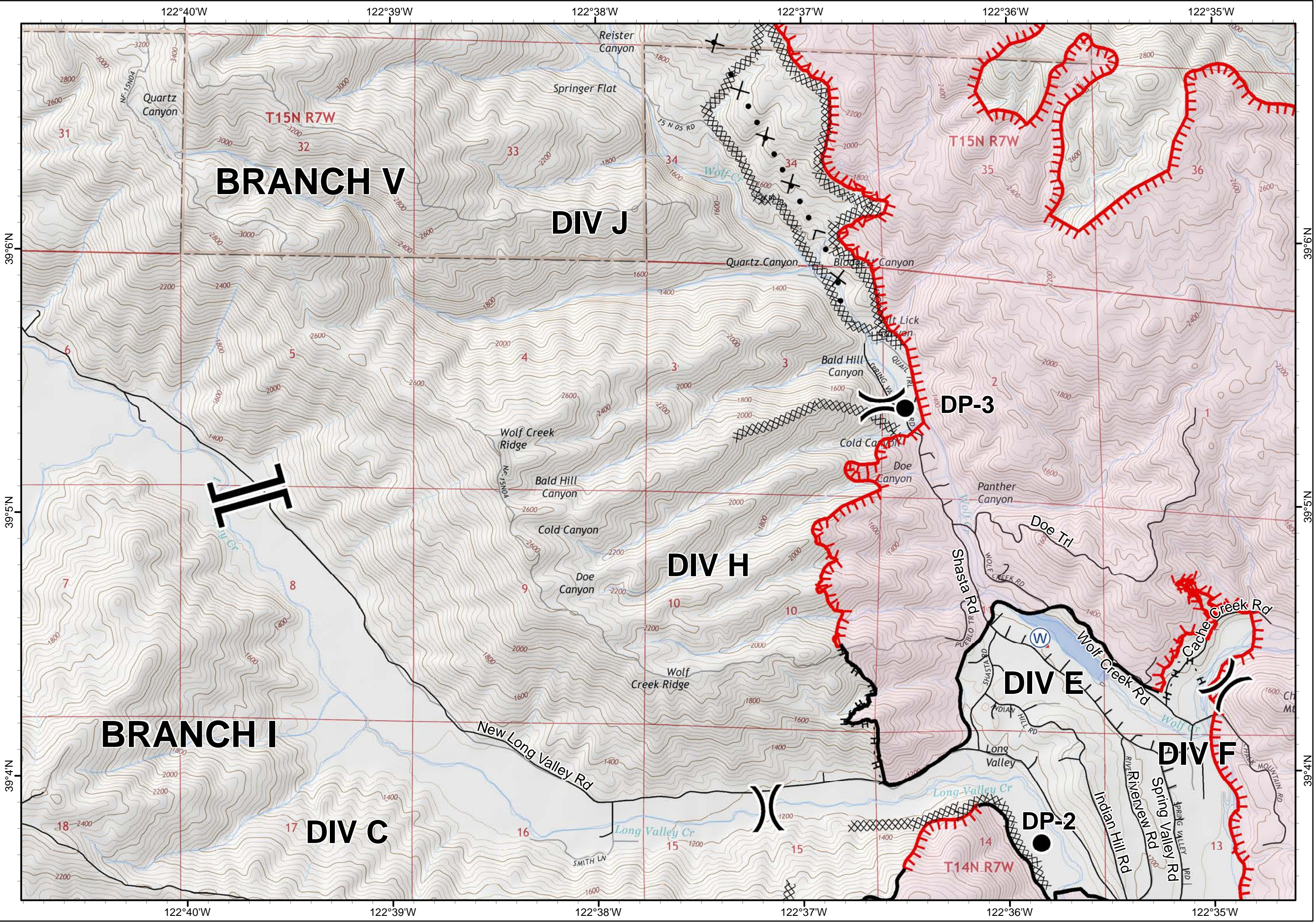
Pawnee Incident  
CA-LNU-009002  
June 28, 2018  
0700-0700

IAP  
Map  
Page 3

- Branch Break
- Division Break
- Drop Point
- Water Source
- Uncontrolled Fire Edge
- Completed Line
- Completed Dozer Line
- Completed Hand Line
- Proposed Dozer Line



1:24,000  
Team 3 GIS  
NAD 83

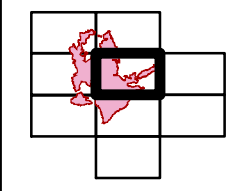




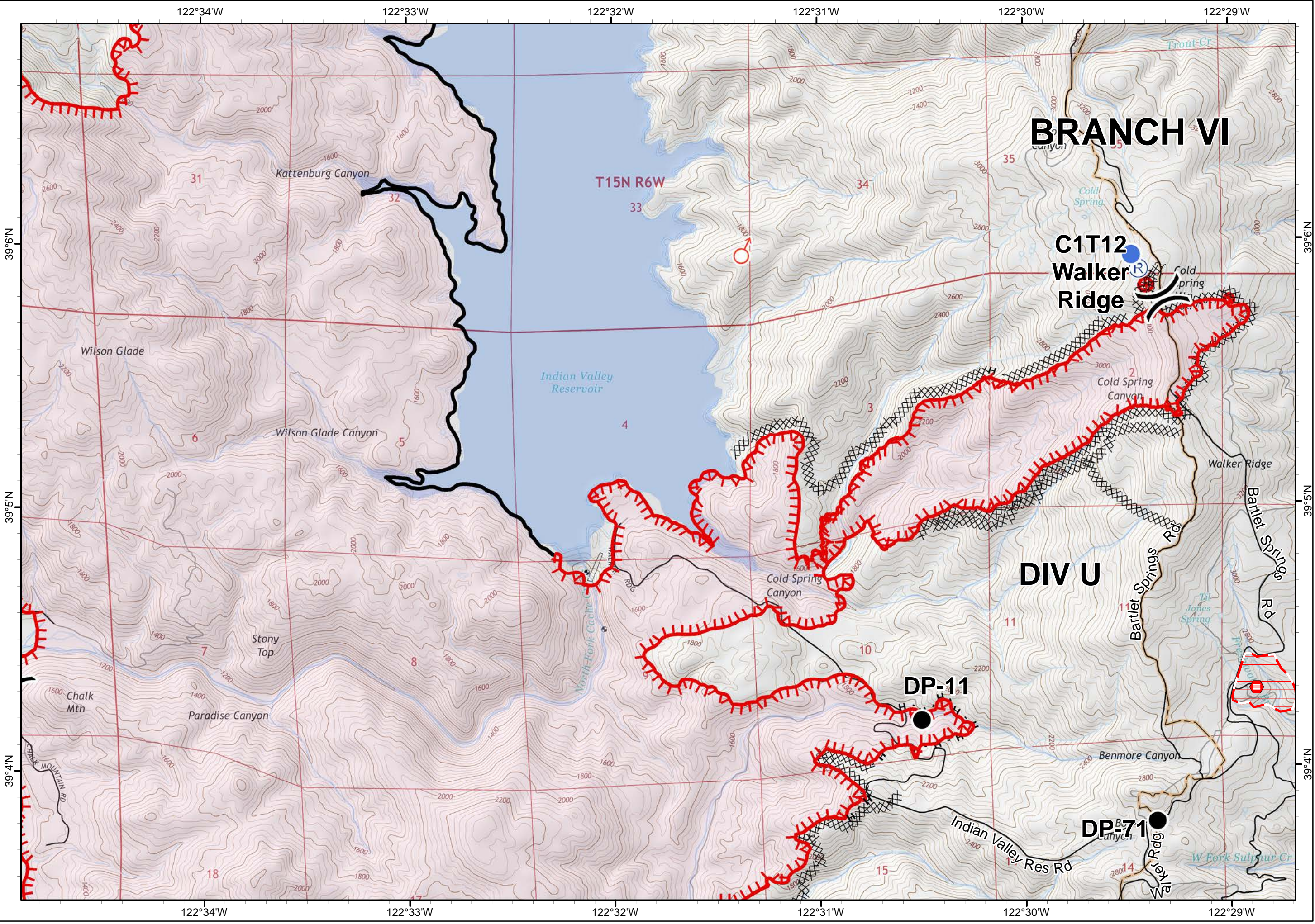
Pawnee Incident  
CA-LNU-009002  
June 28, 2018  
0700-0700

IAP  
Map  
Page 4

- Division Break
- Drop Point
- Helispot
- Repeater
- Spot Fire
- Uncontrolled Fire Edge
- Completed Line
- Completed Dozer Line
- Completed Hand Line
- Life Hazard
- Life Hazard Zone




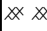


1:24,000  
Team 3 GIS  
NAD 83

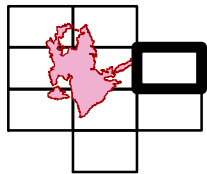




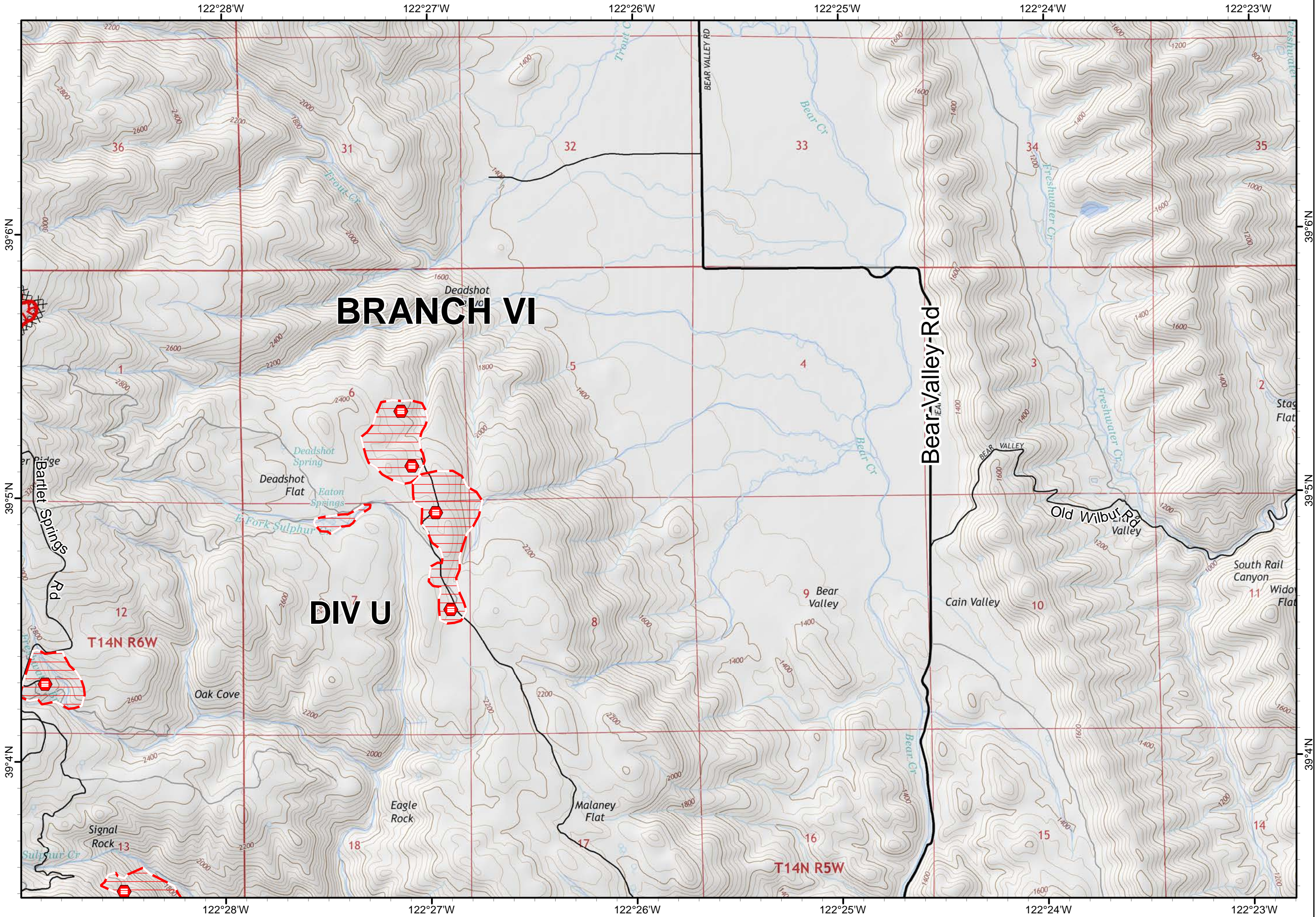
Pawnee Incident  
CA-LNU-009002  
June 28, 2018  
0700-0700

IAP  
Map  
Page 5

-  Uncontrolled Fire Edge
-  Completed Dozer Line
-  Life Hazard
-  Life Hazard Zone



1:24,000  
Team 3 GIS  
NAD 83

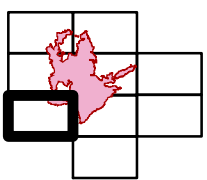




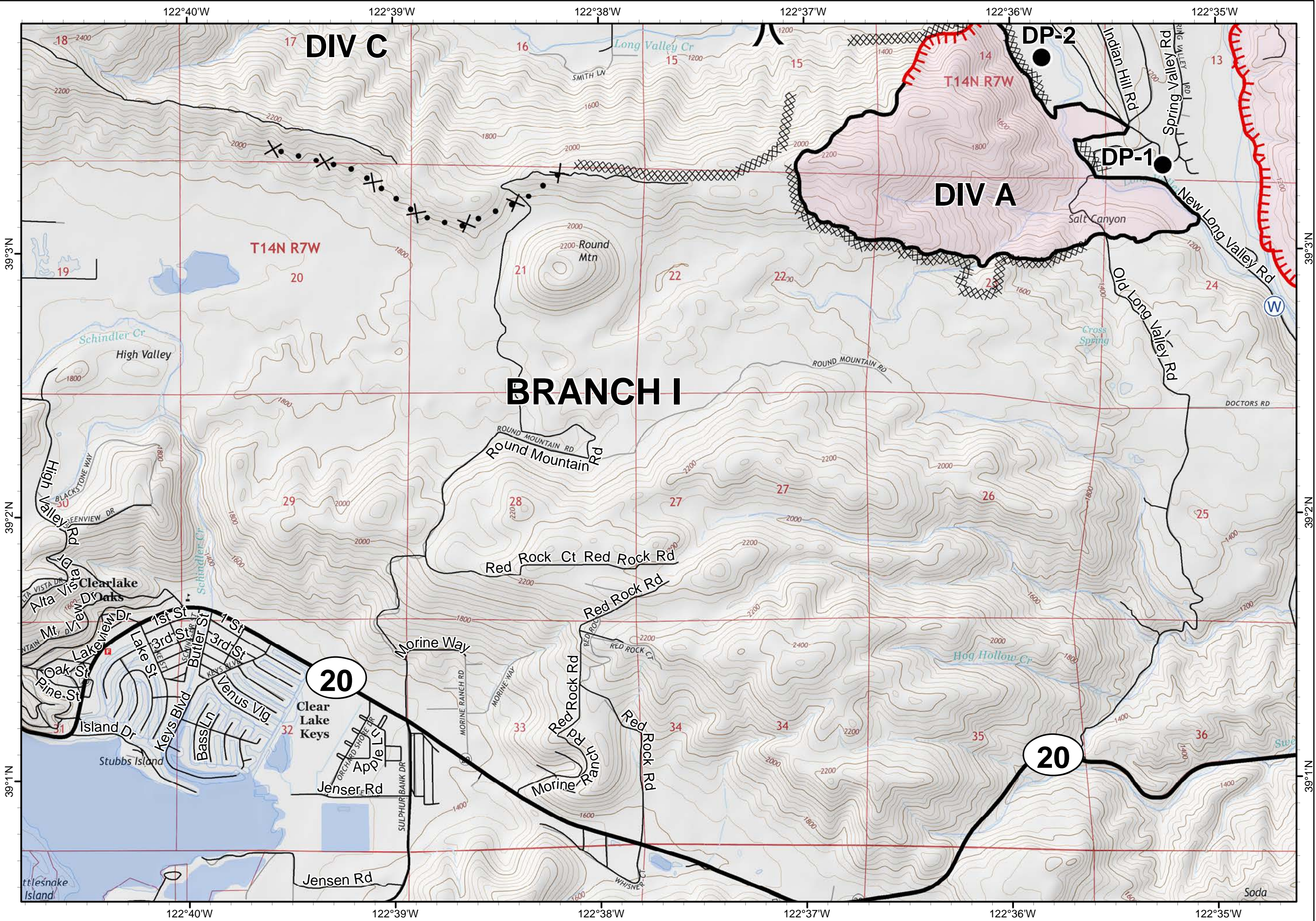
Pawnee Incident  
CA-LNU-009002  
June 28, 2018  
0700-0700

IAP  
Map  
Page 6

- )) Division Break
- Drop Point
- W Water Source
- Uncontrolled Fire Edge
- Completed Line
- Completed Dozer Line
- Proposed Dozer Line



1:24,000  
Team 3 GIS  
NAD 83

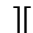



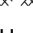
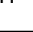


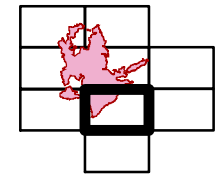




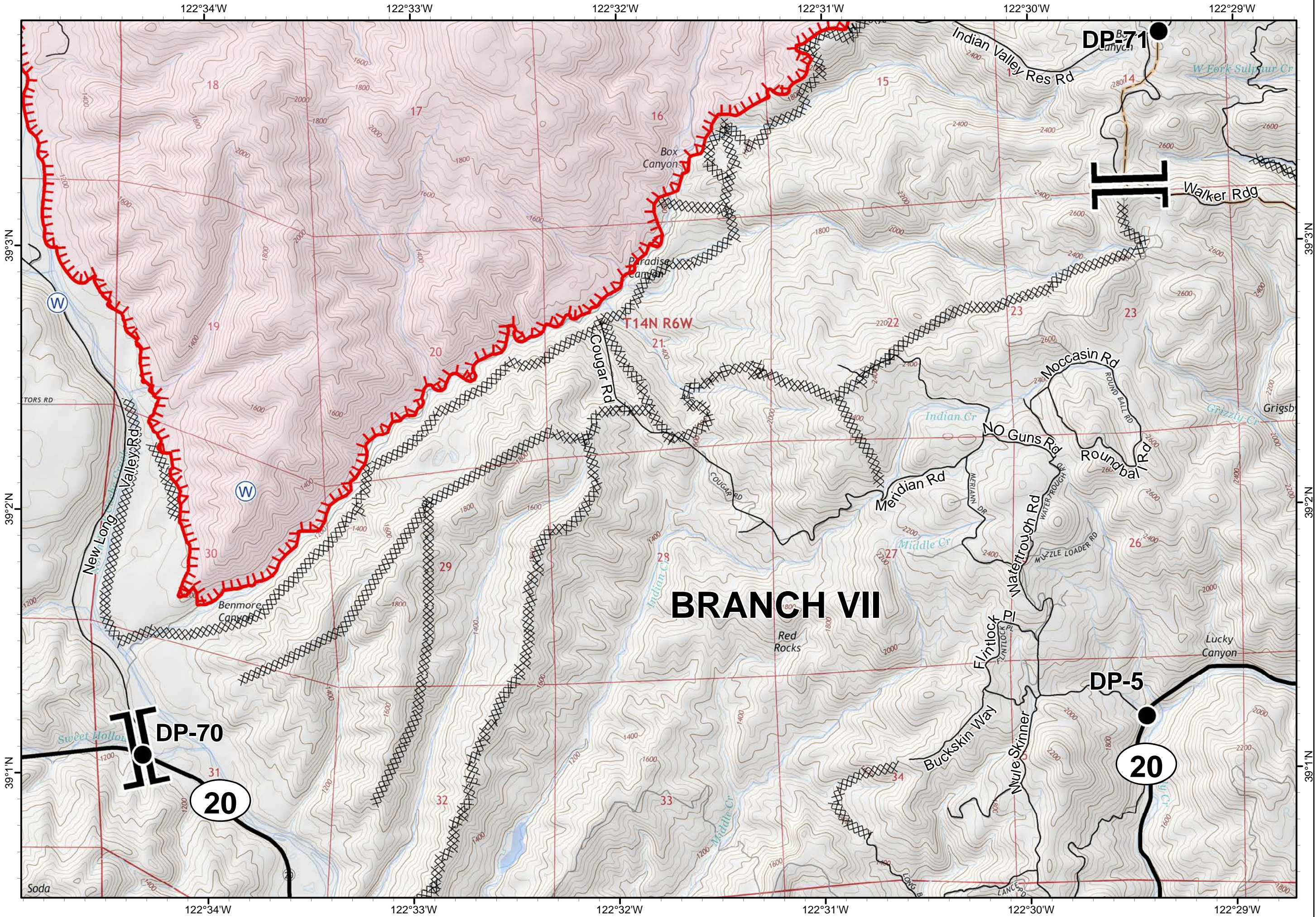
Pawnee Incident  
CA-LNU-009002  
June 28, 2018  
0700-0700

IAP  
Map  
Page 7

-  Branch Break
-  Drop Point
-  Water Source
-  Uncontrolled Fire Edge
-  Completed Dozer Line
-  Completed Hand Line



1:24,000  
Team 3 GIS  
NAD 83

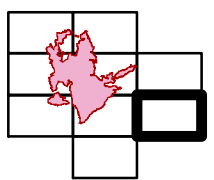




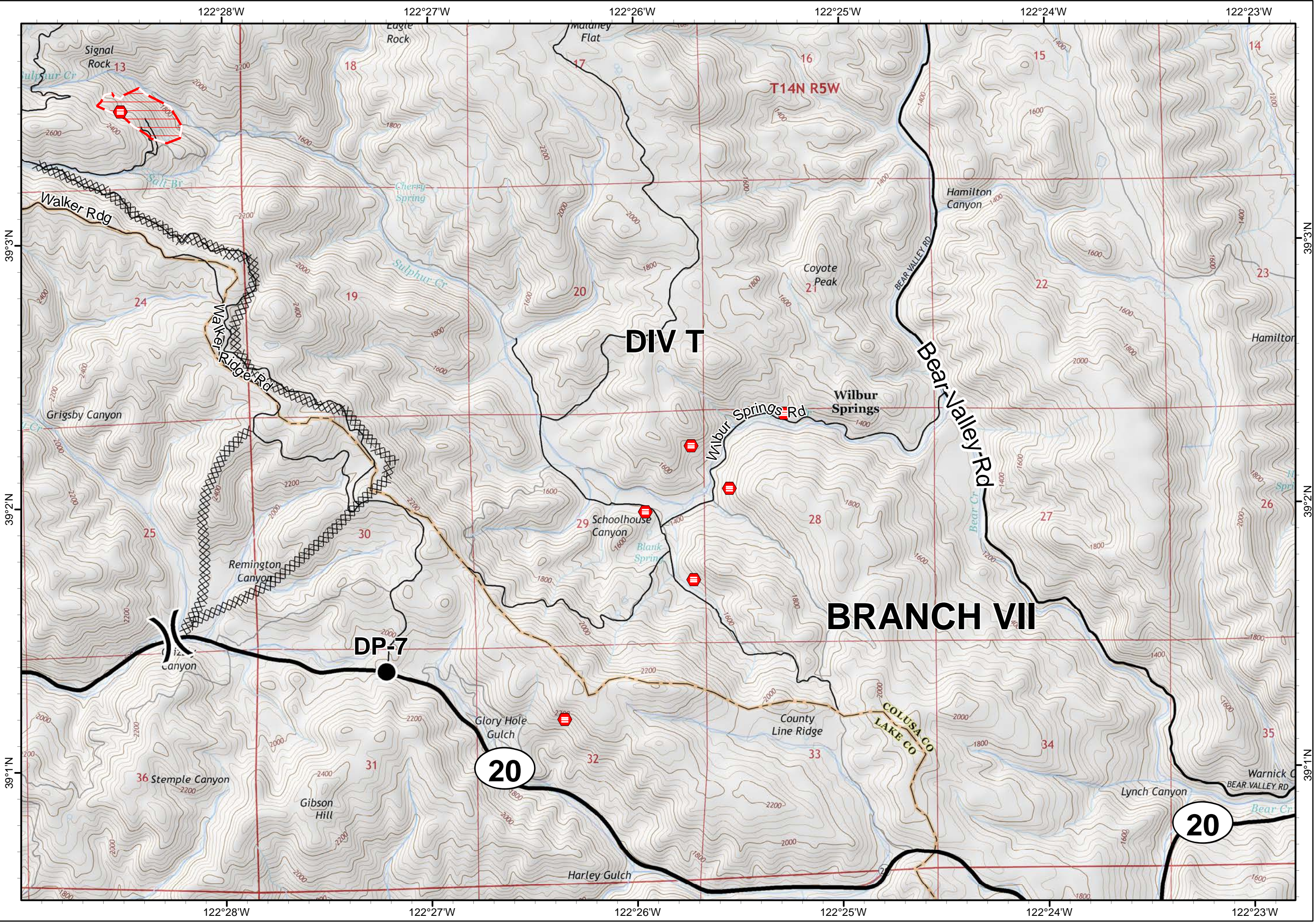
Pawnee Incident  
CA-LNU-009002  
June 28, 2018  
0700-0700

IAP  
Map  
Page 8

- ( ) Division Break
- Drop Point
- XX XX Completed Dozer Line
- Life Hazard
- Life Hazard Zone



1:24,000  
Team 3 GIS  
NAD 83

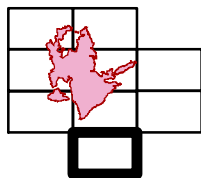




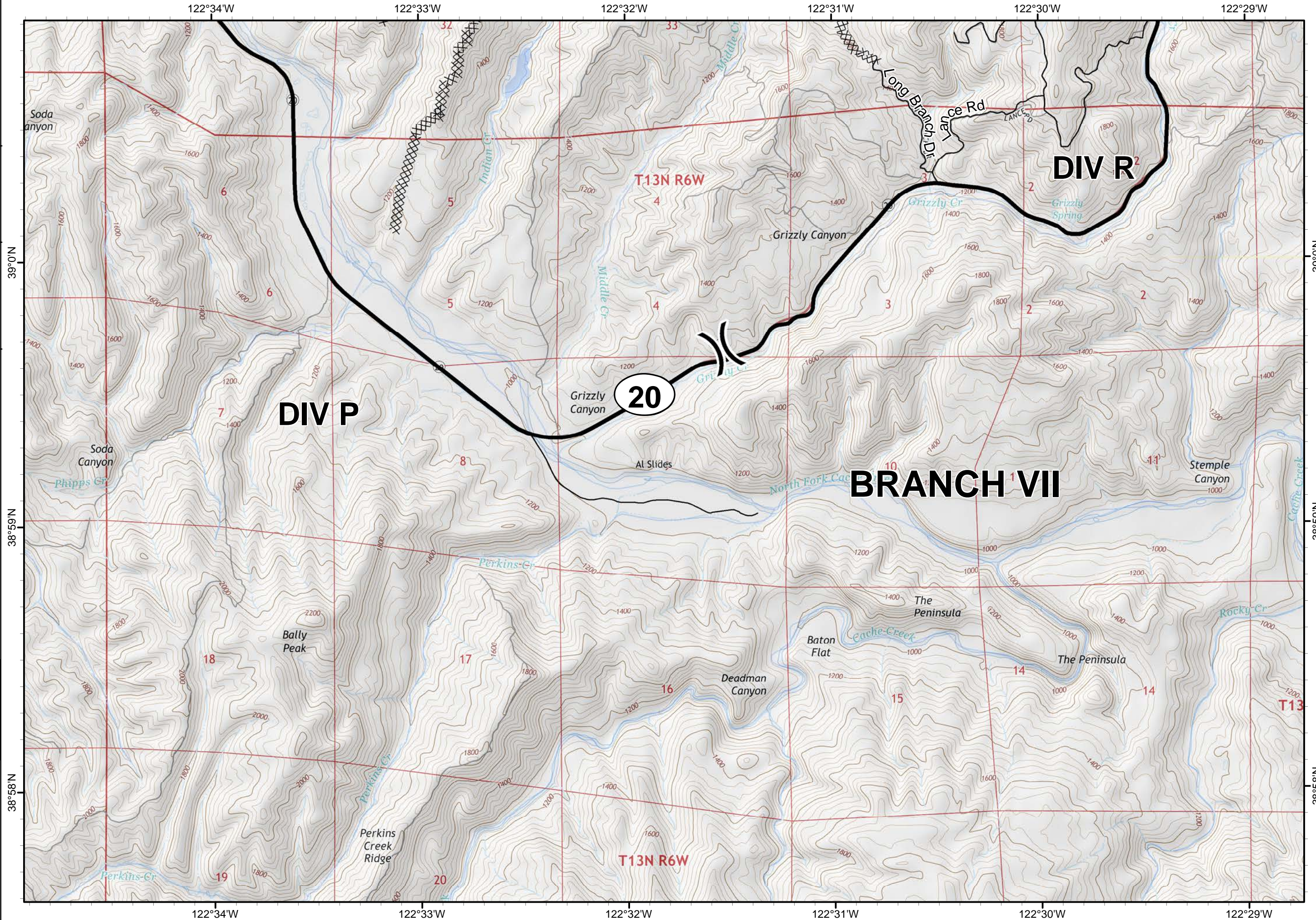
Pawnee Incident  
CA-LNU-009002  
June 28, 2018  
0700-0700

IAP  
Map  
Page 9

) Division Break  
XX Completed Dozer Line



1:24,000  
Team 3 GIS  
NAD 83



Soda Canyon

Soda Canyon  
Phipps Cr

**DIV P**

Bally Peak

Perkins Creek Ridge

Grizzly Canyon

**20**

**T13N R6W**

Deadman Canyon

Baton Flat

**BRANCH VII**

The Peninsula

Cache Creek

The Peninsula

Grizzly Canyon

**T13N R6W**

**DIV R**

Long Branch Di  
Vance Rd

Grizzly Cr

North Fork Cae

Stemple Canyon

Rocky Cr

**T13**

39°0'N

38°59'N

38°58'N

122°34'W

122°33'W

122°32'W

122°31'W

122°30'W

122°29'W

122°34'W

122°33'W

122°32'W

122°31'W

122°30'W

122°29'W

39°0'N

38°59'N

38°58'N