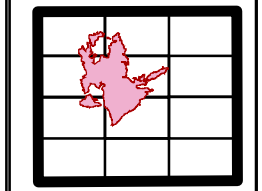




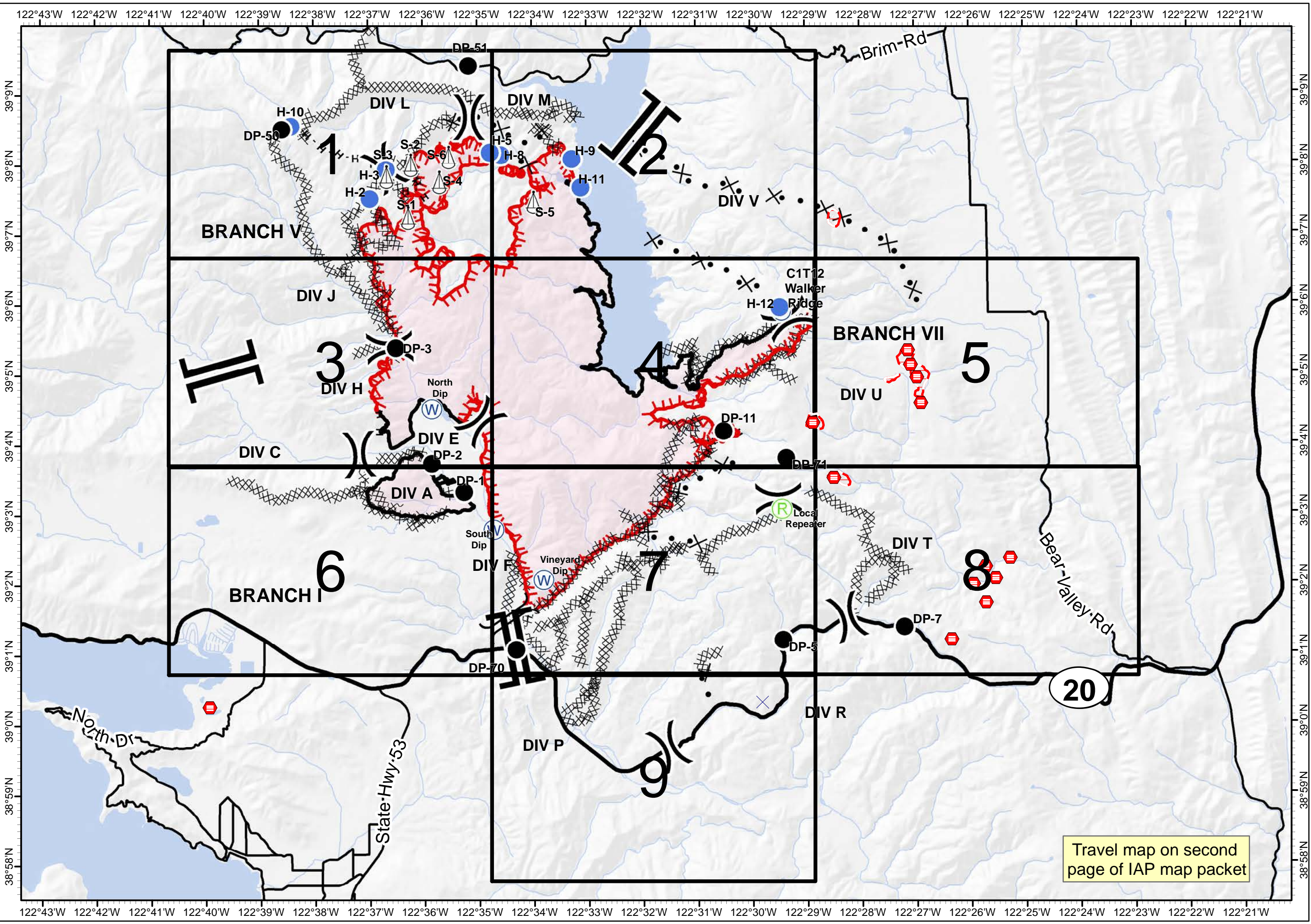
Pawnee Incident
CA-LNU-009002
June 29, 2018
0700-0700

IAP
Map
Page 0

- Branch Break
- Division Break
- Drop Point
- Helispot
- Repeater
- Local Repeater
- Sling Site
- Water Source
- Bridge
- Uncontrolled Fire Edge
- Completed Line
- Completed Dozer Line
- Completed Hand Line
- Proposed Dozer Line
- Life Hazard
- Life Hazard Zone



1:90,000
Team 3 GIS
NAD 83



Travel map on second page of IAP map packet



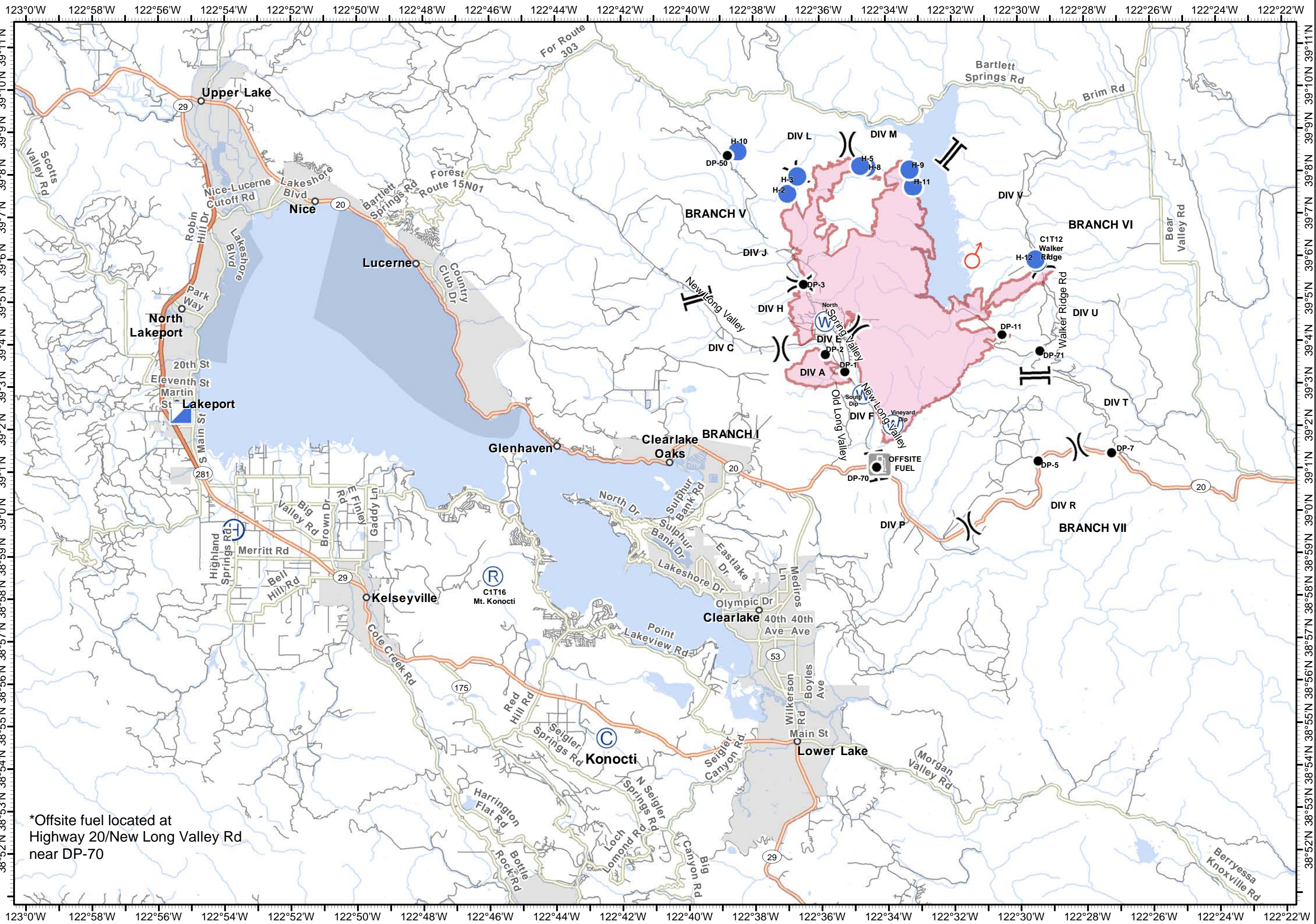
Pawnee Incident
CA-LNU-009002
June 28, 2018
0700 - 0700

Travel Map

- Camp
- Drop Point
- Helibase
- Helispot
- Incident Command Post
- Repeater
- Spot Fire
- Water Source
- Fuel
- Division Break
- Branch Break
- Wildfire Daily Fire Perimeter



1:150,000
Team 3 GIS
NAD 83



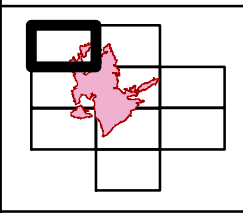
*Offsite fuel located at
Highway 20/New Long Valley Rd
near DP-70



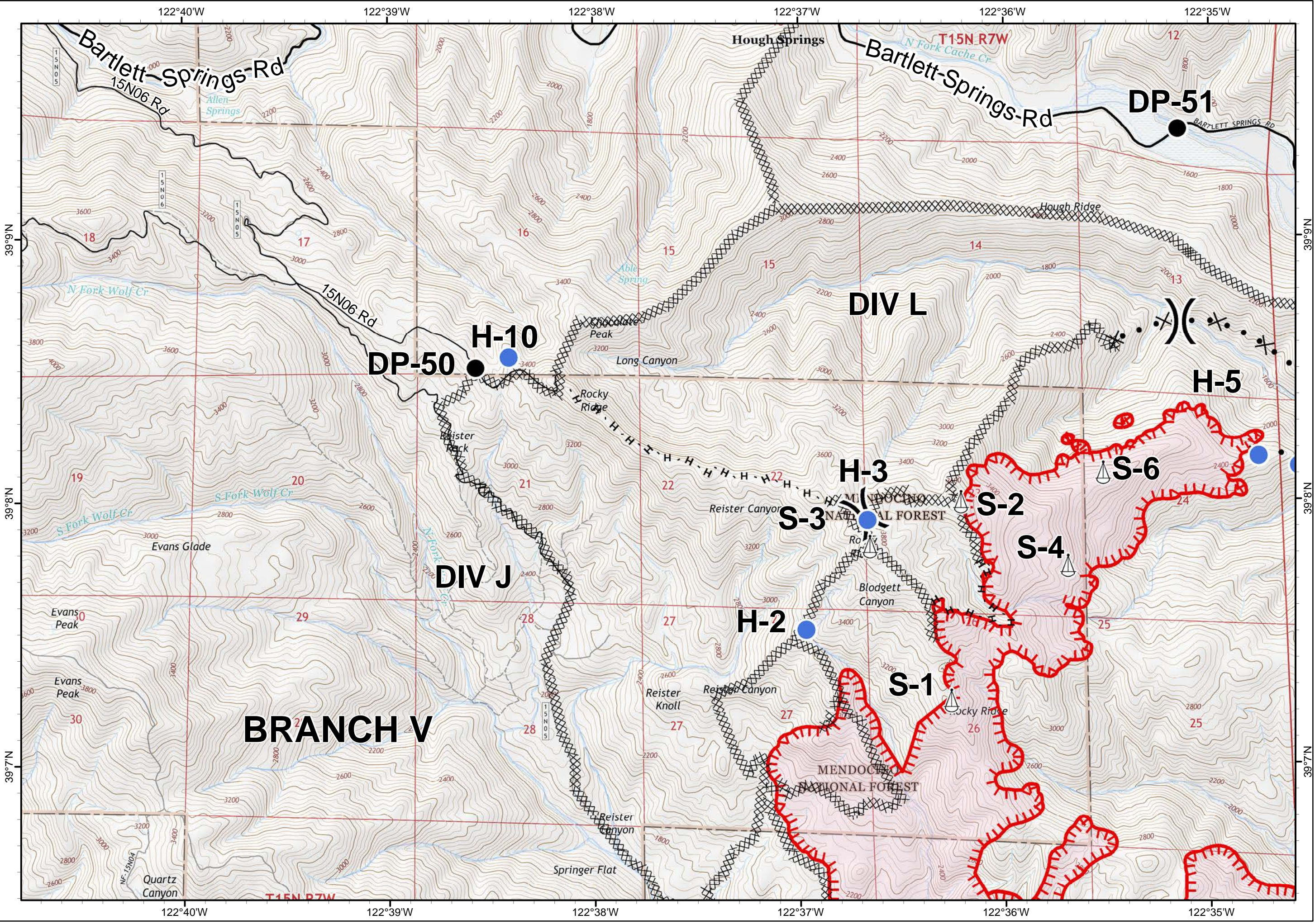
Pawnee Incident
 CA-LNU-009002
 June 29, 2018
 0700-0700

IAP
 Map
 Page 1

- Division Break
- Drop Point
- Helispot
- Sling Site
- Uncontrolled Fire Edge
- Completed Dozer Line
- Completed Hand Line
- Proposed Dozer Line



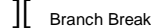


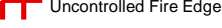
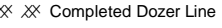


1:24,000
 Team 3 GIS
 NAD 83

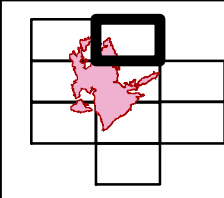




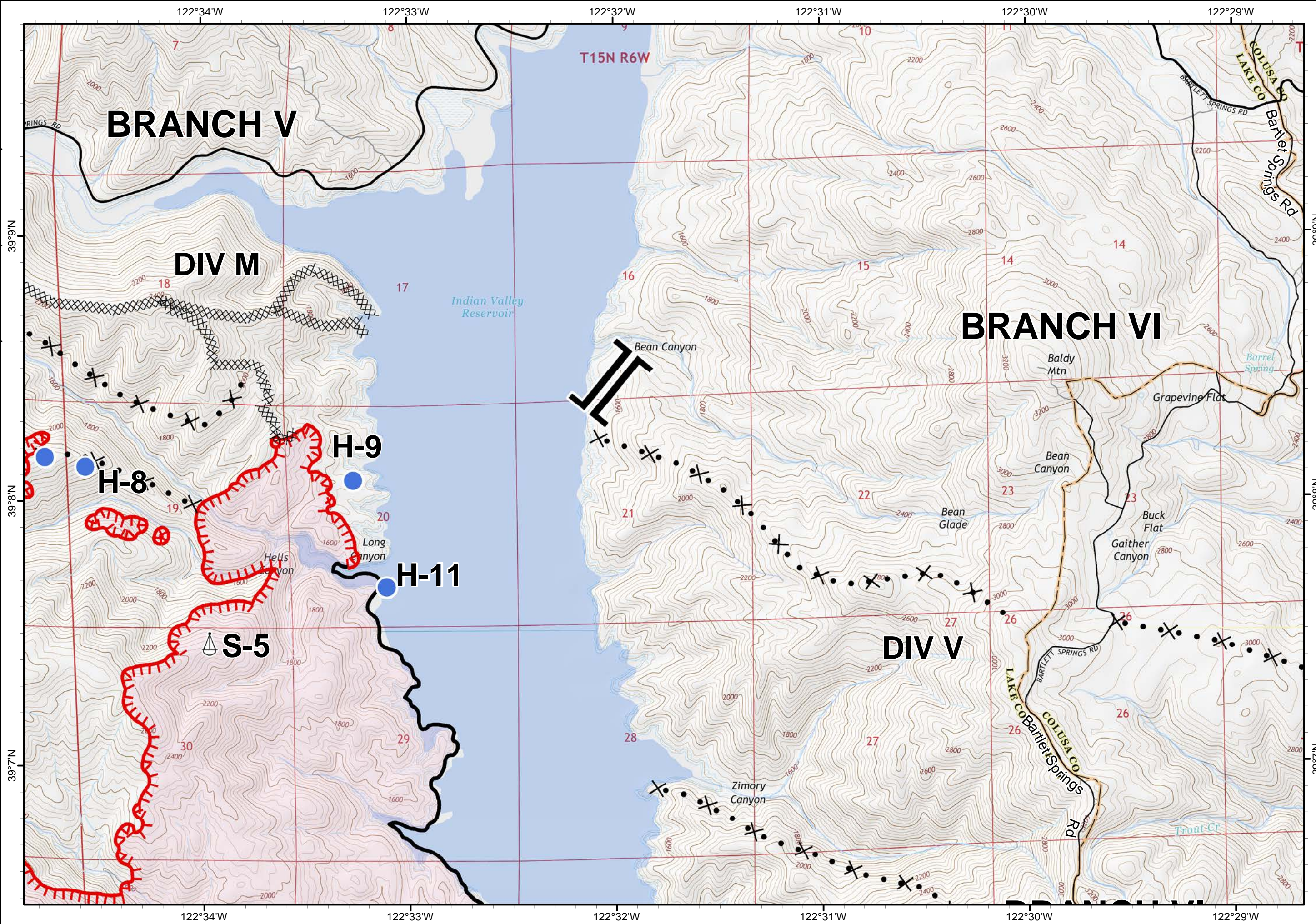
Pawnee Incident
CA-LNU-009002
June 29, 2018
0700-0700

IAP
Map
Page 2

-  Branch Break
-  Helispot
-  Sling Site
-  Uncontrolled Fire Edge
-  Completed Line
-  Completed Dozer Line
-  Proposed Dozer Line



1:24,000
Team 3 GIS
NAD 83

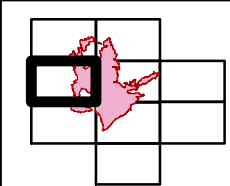




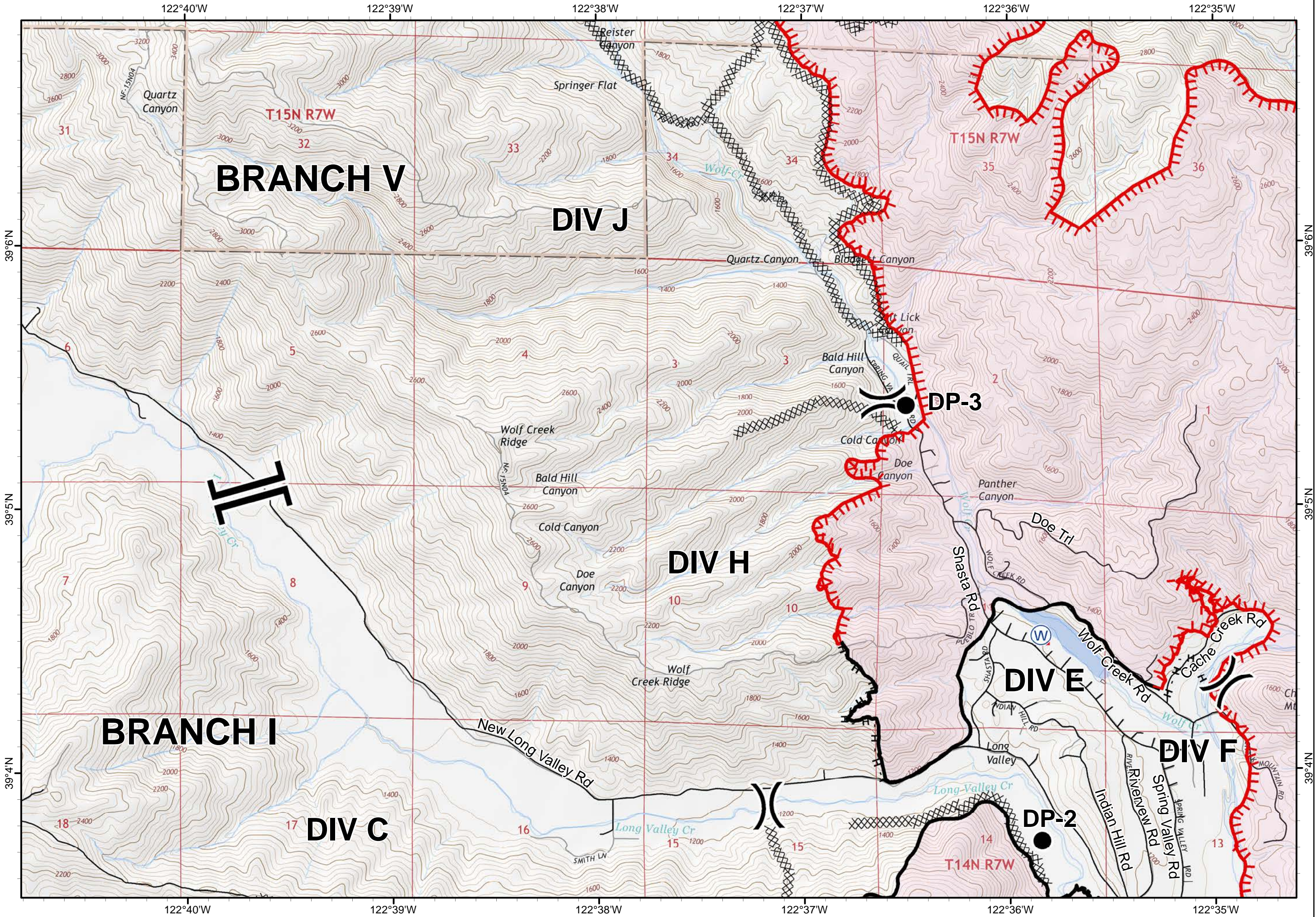
Pawnee Incident
CA-LNU-009002
June 29, 2018
0700-0700

IAP
Map
Page 3

- Branch Break
- Division Break
- Drop Point
- Water Source
- Uncontrolled Fire Edge
- Completed Line
- Completed Dozer Line
- Completed Hand Line



1:24,000
Team 3 GIS
NAD 83

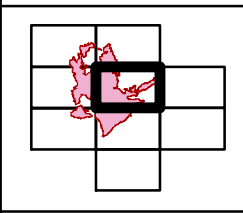




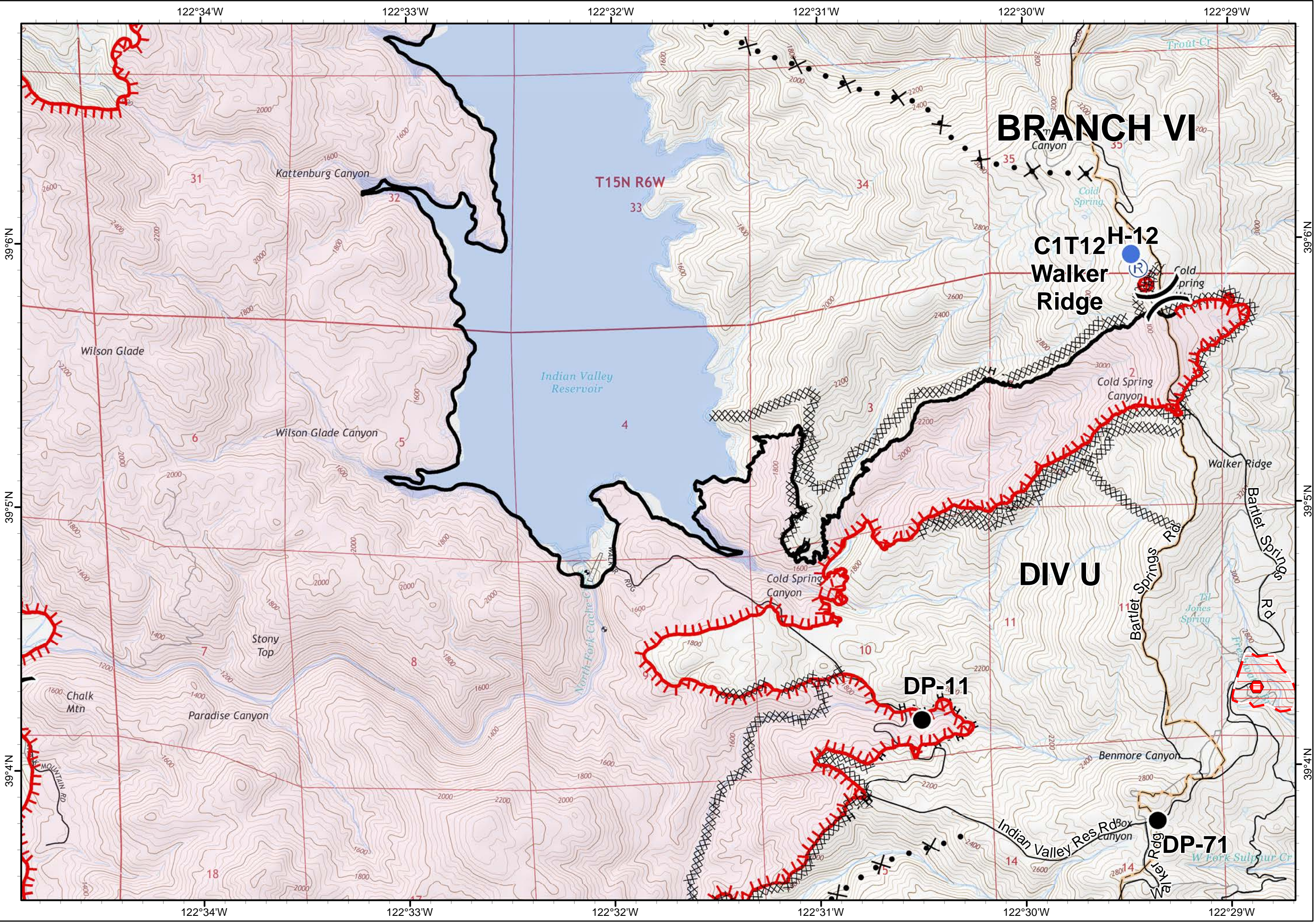
Pawnee Incident
CA-LNU-009002
June 29, 2018
0700-0700

IAP
Map
Page 4

- Division Break
- Drop Point
- Helispot
- Repeater
- Uncontrolled Fire Edge
- Completed Line
- Completed Dozer Line
- Completed Hand Line
- Proposed Dozer Line
- Life Hazard
- Life Hazard Zone







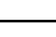

1:24,000
Team 3 GIS
NAD 83

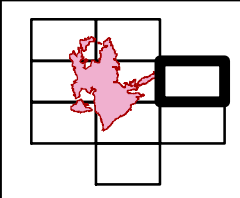




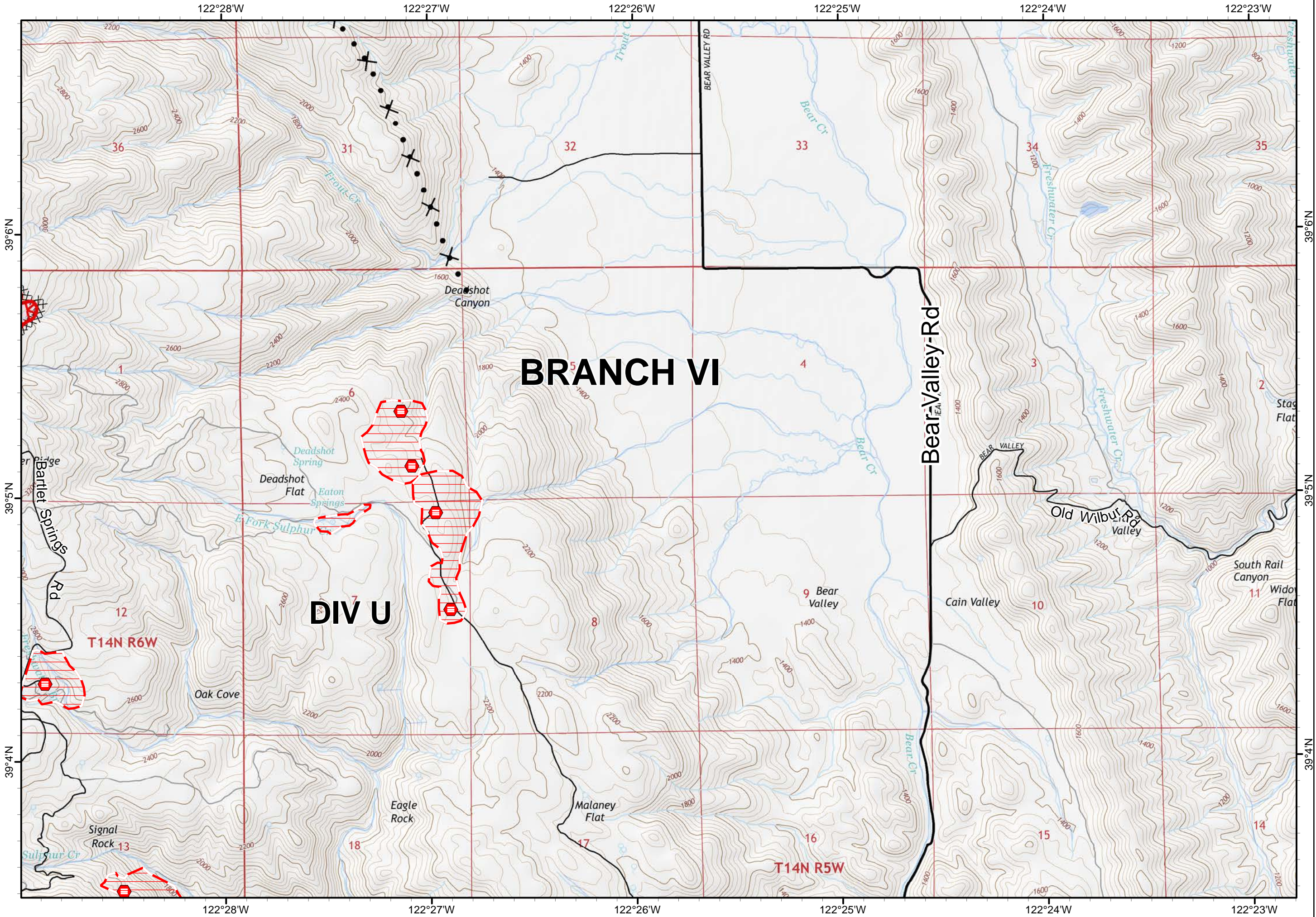
Pawnee Incident
CA-LNU-009002
June 29, 2018
0700-0700

IAP
Map
Page 5

-  Uncontrolled Fire Edge
-  Completed Dozer Line
-  Proposed Dozer Line
-  Life Hazard
-  Life Hazard Zone



1:24,000
Team 3 GIS
NAD 83

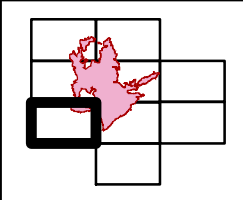




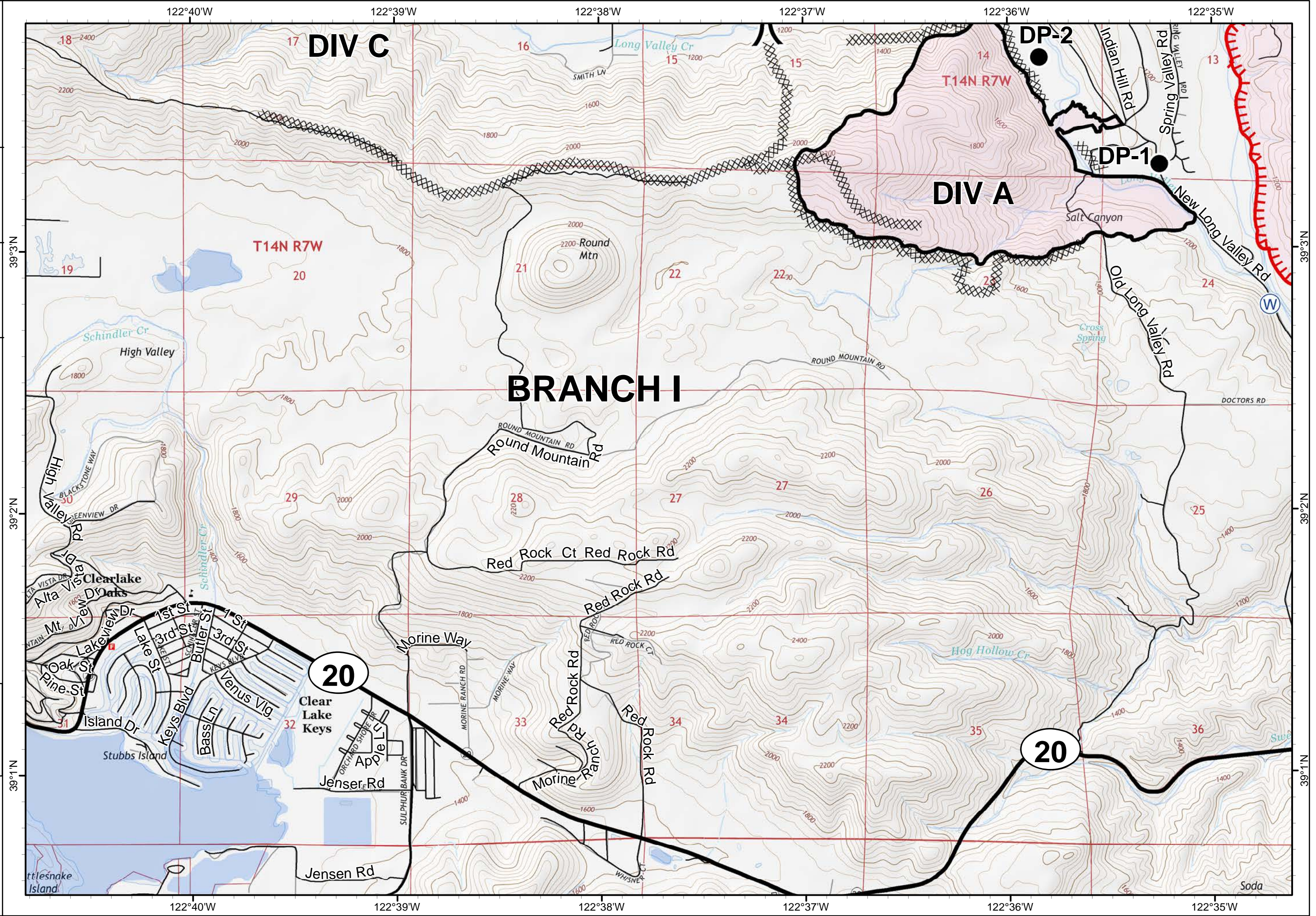
Pawnee Incident
CA-LNU-009002
June 29, 2018
0700-0700

IAP
Map
Page 6

- () Division Break
- Drop Point
- W Water Source
- Uncontrolled Fire Edge
- Completed Line
- Completed Dozer Line



1:24,000
Team 3 GIS
NAD 83

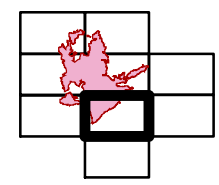




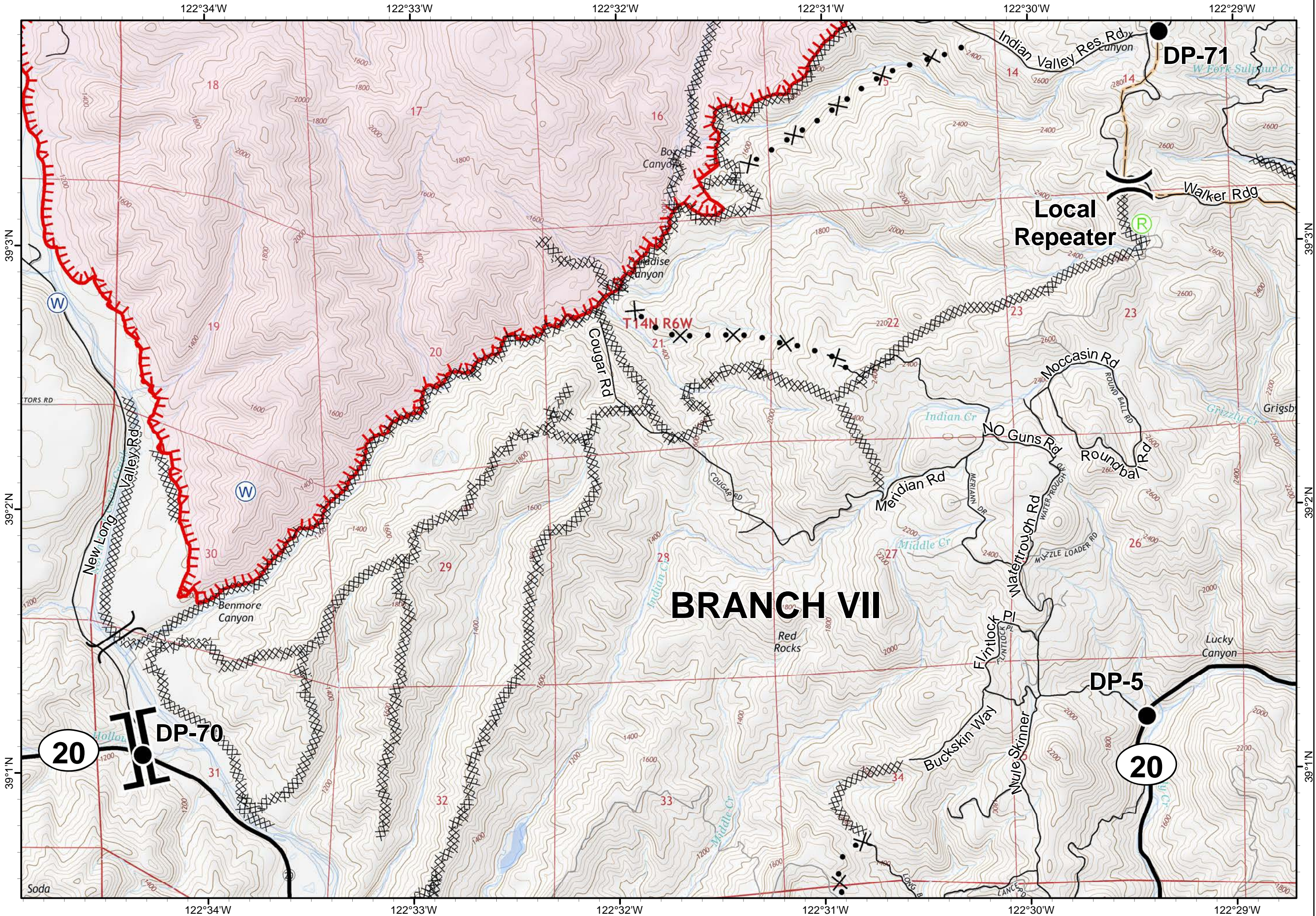
Pawnee Incident
CA-LNU-009002
June 29, 2018
0700-0700

IAP
Map
Page 7

- Branch Break
- Division Break
- Drop Point
- Local Repeater
- Water Source
- Bridge
- Uncontrolled Fire Edge
- Completed Dozer Line
- Completed Hand Line
- Proposed Dozer Line



1:24,000
Team 3 GIS
NAD 83

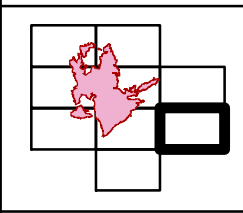




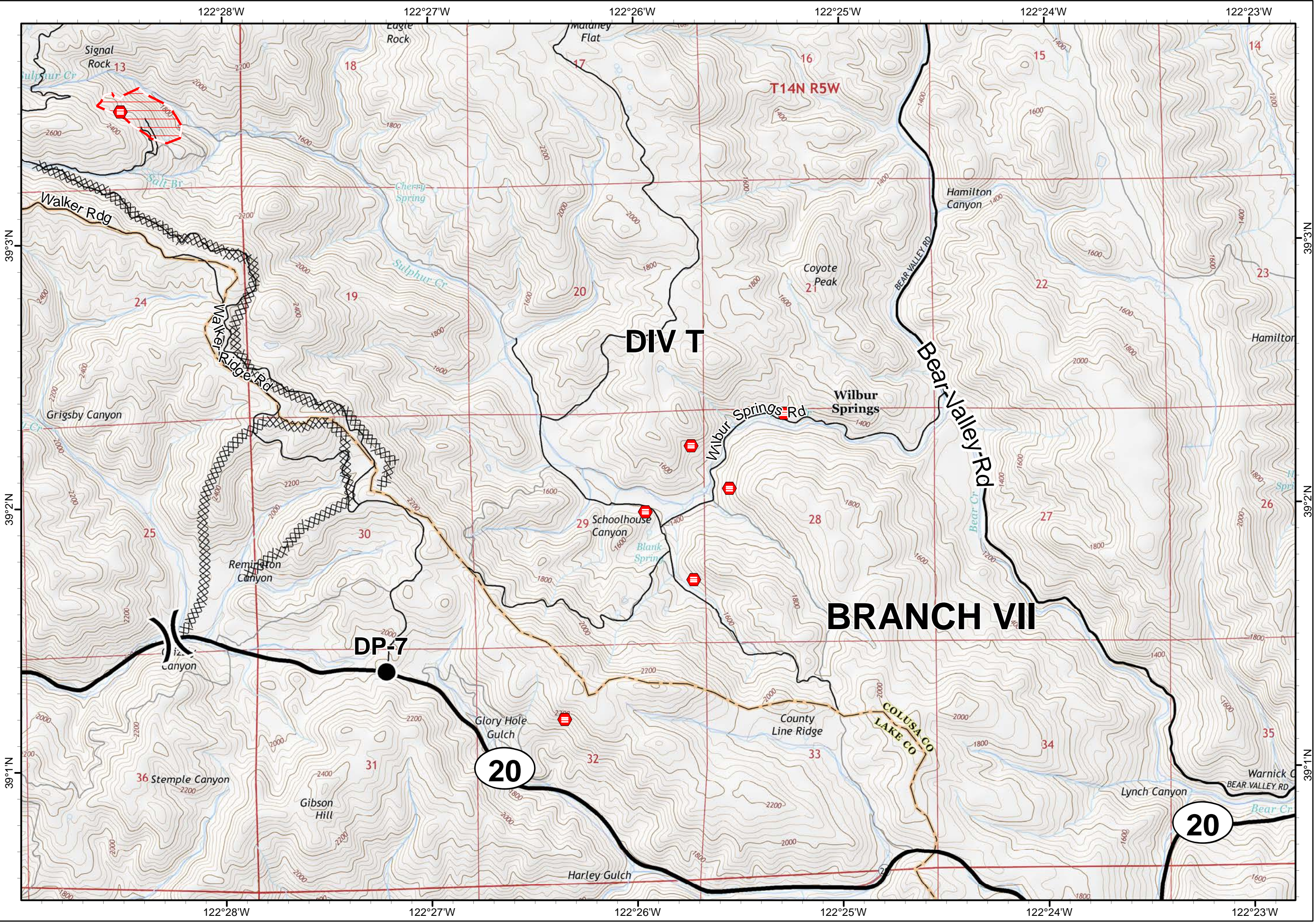
Pawnee Incident
CA-LNU-009002
June 29, 2018
0700-0700

IAP
Map
Page 8

- Division Break
- Drop Point
- Completed Dozer Line
- Life Hazard
- Life Hazard Zone



1:24,000
Team 3 GIS
NAD 83

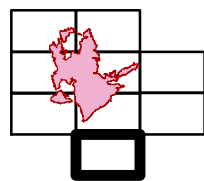




Pawnee Incident
CA-LNU-009002
June 29, 2018
0700-0700

IAP
Map
Page 9

- () Division Break
- XX Completed Dozer Line
- X• Proposed Dozer Line



1:24,000
Team 3 GIS
NAD 83

