



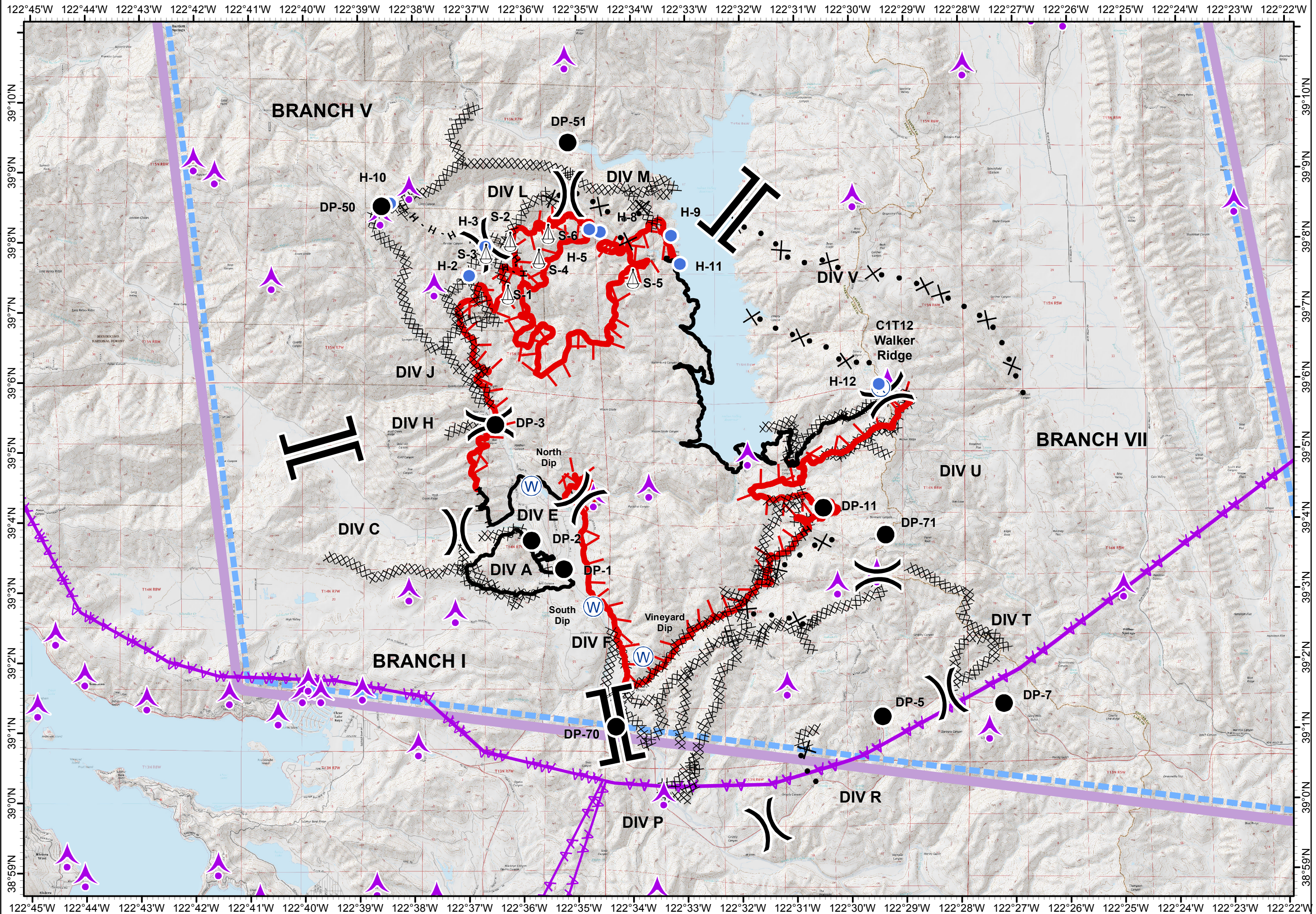
Pawnee Incident
CA-LNU-009002
June 29, 2018
0700 - 0700

Pilot Map

- Branch Break
- Division Break
- Drop Point
- Helispot
- Repeater
- Local Repeater
- Sling Site
- Water Source
- Bridge
- Aerial Hazard
- Uncontrolled Fire Edge
- Fire Edge
- Completed Dozer Line
- Completed Hand Line
- Completed Line
- Proposed Dozer Line
- Aerial Hazard
- TFR



1:90,000
Team 3 GIS
NAD 83



Feature	Label	Latitude	Longitude
Camp	Konocti	38° 54.709'	W122° 42.488'
Drop Point	DP-1	39° 3.320'	W122° 35.257'
Drop Point	DP-11	39° 4.176'	W122° 30.504'
Drop Point	DP-2	39° 3.729'	W122° 35.844'
Drop Point	DP-3	39° 5.382'	W122° 36.498'
Drop Point	DP-5	39° 1.195'	W122° 29.436'
Drop Point	DP-50	39° 8.507'	W122° 38.573'
Drop Point	DP-51	39° 9.408'	W122° 35.152'
Drop Point	DP-7	39° 1.375'	W122° 27.216'
Drop Point	DP-70	39° 1.067'	W122° 34.314'
Drop Point	DP-71	39° 3.790'	W122° 29.360'
Helibase	H-1	38° 59.634'	W122° 53.724'
Helispot	H-10	39° 8.547'	W122° 38.413'
Helispot	H-11	39° 7.666'	W122° 33.108'
Helispot	H-12	39° 5.940'	W122° 29.475'
Helispot	H-2	39° 7.509'	W122° 36.968'
Helispot	H-3	39° 7.924'	W122° 36.668'
Helispot	H-5	39° 8.164'	W122° 34.762'
Helispot	H-8	39° 8.127'	W122° 34.566'
Helispot	H-9	39° 8.070'	W122° 33.269'
Incident Command Post	ICP	39° 2.395'	W122° 55.313'
Repeater	C1T12	39° 5.887'	W122° 29.439'
Repeater	C1T16	38° 58.523'	W122° 45.898'
Sling Site	S-1	39° 7.238'	W122° 36.263'
Sling Site	S-2	39° 7.993'	W122° 36.214'
Sling Site	S-3	39° 7.824'	W122° 36.658'
Sling Site	S-4	39° 7.749'	W122° 35.693'
Sling Site	S-5	39° 7.457'	W122° 33.969'
Sling Site	S-6	39° 8.102'	W122° 35.521'
Unknown	Bridge	39° 1.514'	W122° 34.439'
Water Source	North Dip	39° 4.508'	W122° 35.849'
Water Source	South Dip	39° 2.782'	W122° 34.720'
Water Source	Vineyard Dip	39° 2.064'	W122° 33.810'